



# Full wwPDB X-ray Structure Validation Report ⓘ

Oct 23, 2023 – 01:58 PM EDT

PDB ID : 2ZZ4  
Title : Covalent complex of orotidine monophosphate decarboxylase D75N mutant from *M. thermoautotrophicum* with 6-cyano-UMP  
Authors : Fujihashi, M.; Pai, E.F.  
Deposited on : 2009-02-05  
Resolution : 1.67 Å(reported)

This is a Full wwPDB X-ray Structure Validation Report for a publicly released PDB entry.

We welcome your comments at [validation@mail.wwpdb.org](mailto:validation@mail.wwpdb.org)

A user guide is available at

<https://www.wwpdb.org/validation/2017/XrayValidationReportHelp>

with specific help available everywhere you see the ⓘ symbol.

The types of validation reports are described at

<http://www.wwpdb.org/validation/2017/FAQs#types>.

---

The following versions of software and data (see [references ⓘ](#)) were used in the production of this report:

MolProbity : 4.02b-467  
Mogul : 1.8.5 (274361), CSD as541be (2020)  
Xtriage (Phenix) : 1.13  
EDS : 2.36  
buster-report : 1.1.7 (2018)  
Percentile statistics : 20191225.v01 (using entries in the PDB archive December 25th 2019)  
Refmac : 5.8.0158  
CCP4 : 7.0.044 (Gargrove)  
Ideal geometry (proteins) : Engh & Huber (2001)  
Ideal geometry (DNA, RNA) : Parkinson et al. (1996)  
Validation Pipeline (wwPDB-VP) : 2.36

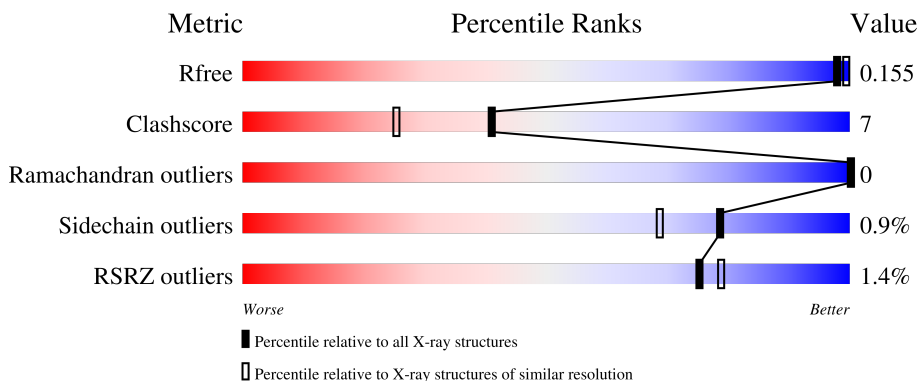
# 1 Overall quality at a glance

The following experimental techniques were used to determine the structure:

*X-RAY DIFFRACTION*

The reported resolution of this entry is 1.67 Å.

Percentile scores (ranging between 0-100) for global validation metrics of the entry are shown in the following graphic. The table shows the number of entries on which the scores are based.



Metric	Whole archive (#Entries)	Similar resolution (#Entries, resolution range(Å))
$R_{free}$	130704	6780 (1.70-1.66)
Clashscore	141614	7310 (1.70-1.66)
Ramachandran outliers	138981	7173 (1.70-1.66)
Sidechain outliers	138945	7172 (1.70-1.66)
RSRZ outliers	127900	6661 (1.70-1.66)

The table below summarises the geometric issues observed across the polymeric chains and their fit to the electron density. The red, orange, yellow and green segments of the lower bar indicate the fraction of residues that contain outliers for  $\geq 3$ , 2, 1 and 0 types of geometric quality criteria respectively. A grey segment represents the fraction of residues that are not modelled. The numeric value for each fraction is indicated below the corresponding segment, with a dot representing fractions  $\leq 5\%$ . The upper red bar (where present) indicates the fraction of residues that have poor fit to the electron density. The numeric value is given above the bar.

Mol	Chain	Length	Quality of chain
1	A	252	 2% 73% 12% • 15%
1	B	252	 1% 73% 11% • 15%

## 2 Entry composition i

There are 4 unique types of molecules in this entry. The entry contains 3869 atoms, of which 0 are hydrogens and 0 are deuteriums.

In the tables below, the ZeroOcc column contains the number of atoms modelled with zero occupancy, the AltConf column contains the number of residues with at least one atom in alternate conformation and the Trace column contains the number of residues modelled with at most 2 atoms.

- Molecule 1 is a protein called Orotidine 5'-phosphate decarboxylase.

Mol	Chain	Residues	Atoms					ZeroOcc	AltConf	Trace
			Total	C	N	O	S			
1	A	215	1744	1091	311	330	12	0	13	0
1	B	215	1740	1088	306	334	12	0	14	0

There are 56 discrepancies between the modelled and reference sequences:

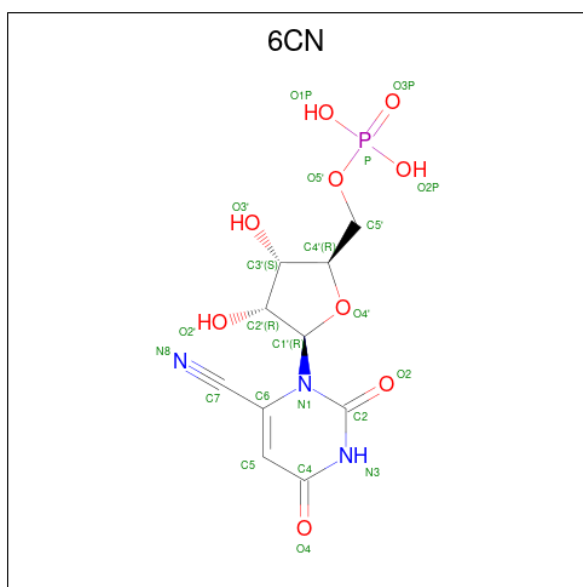
Chain	Residue	Modelled	Actual	Comment	Reference
A	-2	GLY	-	expression tag	UNP O26232
A	-1	SER	-	expression tag	UNP O26232
A	0	HIS	-	expression tag	UNP O26232
A	75	ASN	ASP	engineered mutation	UNP O26232
A	101	PRO	ARG	SEE REMARK 999	UNP O26232
A	226	ARG	LEU	engineered mutation	UNP O26232
A	227	ILE	ASN	engineered mutation	UNP O26232
A	229	GLU	-	expression tag	UNP O26232
A	230	ASP	-	expression tag	UNP O26232
A	231	PRO	-	expression tag	UNP O26232
A	232	ALA	-	expression tag	UNP O26232
A	233	ALA	-	expression tag	UNP O26232
A	234	ASN	-	expression tag	UNP O26232
A	235	LYS	-	expression tag	UNP O26232
A	236	ALA	-	expression tag	UNP O26232
A	237	ARG	-	expression tag	UNP O26232
A	238	LYS	-	expression tag	UNP O26232
A	239	GLU	-	expression tag	UNP O26232
A	240	ALA	-	expression tag	UNP O26232
A	241	GLU	-	expression tag	UNP O26232
A	242	LEU	-	expression tag	UNP O26232
A	243	ALA	-	expression tag	UNP O26232
A	244	ALA	-	expression tag	UNP O26232
A	245	ALA	-	expression tag	UNP O26232
A	246	THR	-	expression tag	UNP O26232

*Continued on next page...*

*Continued from previous page...*

Chain	Residue	Modelled	Actual	Comment	Reference
A	247	ALA	-	expression tag	UNP O26232
A	248	GLU	-	expression tag	UNP O26232
A	249	GLN	-	expression tag	UNP O26232
B	-2	GLY	-	expression tag	UNP O26232
B	-1	SER	-	expression tag	UNP O26232
B	0	HIS	-	expression tag	UNP O26232
B	75	ASN	ASP	engineered mutation	UNP O26232
B	101	PRO	ARG	SEE REMARK 999	UNP O26232
B	226	ARG	LEU	engineered mutation	UNP O26232
B	227	ILE	ASN	engineered mutation	UNP O26232
B	229	GLU	-	expression tag	UNP O26232
B	230	ASP	-	expression tag	UNP O26232
B	231	PRO	-	expression tag	UNP O26232
B	232	ALA	-	expression tag	UNP O26232
B	233	ALA	-	expression tag	UNP O26232
B	234	ASN	-	expression tag	UNP O26232
B	235	LYS	-	expression tag	UNP O26232
B	236	ALA	-	expression tag	UNP O26232
B	237	ARG	-	expression tag	UNP O26232
B	238	LYS	-	expression tag	UNP O26232
B	239	GLU	-	expression tag	UNP O26232
B	240	ALA	-	expression tag	UNP O26232
B	241	GLU	-	expression tag	UNP O26232
B	242	LEU	-	expression tag	UNP O26232
B	243	ALA	-	expression tag	UNP O26232
B	244	ALA	-	expression tag	UNP O26232
B	245	ALA	-	expression tag	UNP O26232
B	246	THR	-	expression tag	UNP O26232
B	247	ALA	-	expression tag	UNP O26232
B	248	GLU	-	expression tag	UNP O26232
B	249	GLN	-	expression tag	UNP O26232

- Molecule 2 is 6-cyanouridine 5'-phosphate (three-letter code: 6CN) (formula: C<sub>10</sub>H<sub>12</sub>N<sub>3</sub>O<sub>9</sub>P).



Mol	Chain	Residues	Atoms					ZeroOcc	AltConf
			Total	C	N	O	P		
2	A	1	21	9	2	9	1	0	0
2	B	1	21	9	2	9	1	0	0

- Molecule 3 is GLYCEROL (three-letter code: GOL) (formula:  $C_3H_8O_3$ ).



Mol	Chain	Residues	Atoms			ZeroOcc	AltConf
			Total	C	O		
3	A	1	6	3	3	0	0
3	B	1	6	3	3	0	0

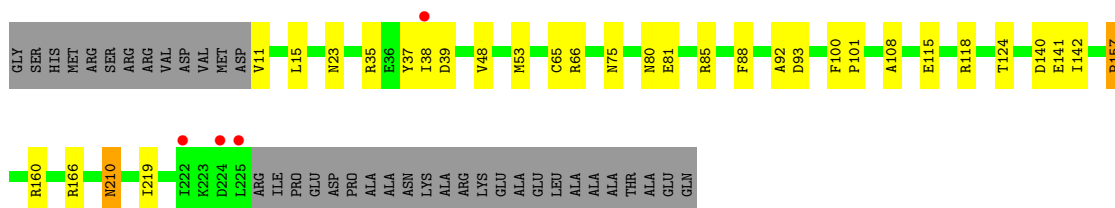
- Molecule 4 is water.

Mol	Chain	Residues	Atoms		ZeroOcc	AltConf
4	A	196	Total 196	O 196	0	1
4	B	135	Total 135	O 135	0	1

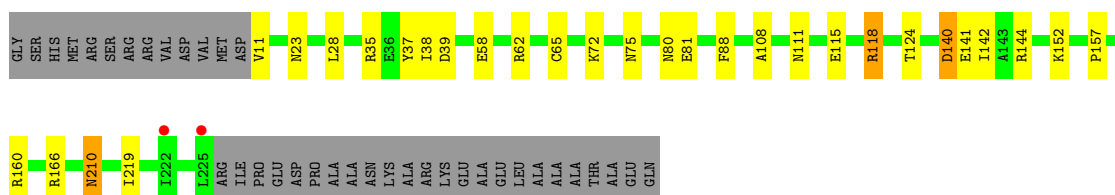
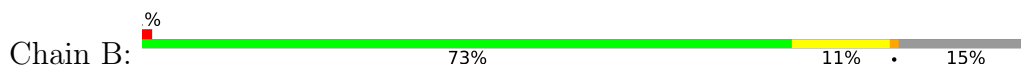
### 3 Residue-property plots [i](#)

These plots are drawn for all protein, RNA, DNA and oligosaccharide chains in the entry. The first graphic for a chain summarises the proportions of the various outlier classes displayed in the second graphic. The second graphic shows the sequence view annotated by issues in geometry and electron density. Residues are color-coded according to the number of geometric quality criteria for which they contain at least one outlier: green = 0, yellow = 1, orange = 2 and red = 3 or more. A red dot above a residue indicates a poor fit to the electron density ( $RSRZ > 2$ ). Stretches of 2 or more consecutive residues without any outlier are shown as a green connector. Residues present in the sample, but not in the model, are shown in grey.

- Molecule 1: Orotidine 5'-phosphate decarboxylase



- Molecule 1: Orotidine 5'-phosphate decarboxylase



## 4 Data and refinement statistics i

Property	Value	Source
Space group	P 1 21 1	Depositor
Cell constants a, b, c, $\alpha$ , $\beta$ , $\gamma$	58.04Å 73.85Å 59.23Å 90.00° 119.33° 90.00°	Depositor
Resolution (Å)	23.10 – 1.67 23.10 – 1.67	Depositor EDS
% Data completeness (in resolution range)	96.2 (23.10-1.67) 96.3 (23.10-1.67)	Depositor EDS
$R_{merge}$	(Not available)	Depositor
$R_{sym}$	0.05	Depositor
$\langle I/\sigma(I) \rangle$ <sup>1</sup>	2.94 (at 1.67Å)	Xtriage
Refinement program	CNS 1.1	Depositor
R, $R_{free}$	0.158 , 0.185 0.152 , 0.155	Depositor DCC
$R_{free}$ test set	2395 reflections (4.92%)	wwPDB-VP
Wilson B-factor (Å <sup>2</sup> )	14.1	Xtriage
Anisotropy	0.301	Xtriage
Bulk solvent $k_{sol}$ (e/Å <sup>3</sup> ), $B_{sol}$ (Å <sup>2</sup> )	0.40 , 36.4	EDS
L-test for twinning <sup>2</sup>	$\langle  L  \rangle = 0.51$ , $\langle L^2 \rangle = 0.34$	Xtriage
Estimated twinning fraction	0.002 for -h-l,k,h 0.002 for l,k,-h-l 0.478 for h,-k,-h-l 0.008 for -h-l,-k,l 0.009 for l,-k,h	Xtriage
$F_o, F_c$ correlation	0.97	EDS
Total number of atoms	3869	wwPDB-VP
Average B, all atoms (Å <sup>2</sup> )	16.0	wwPDB-VP

Xtriage's analysis on translational NCS is as follows: *The largest off-origin peak in the Patterson function is 6.75% of the height of the origin peak. No significant pseudotranslation is detected.*

<sup>1</sup>Intensities estimated from amplitudes.

<sup>2</sup>Theoretical values of  $\langle |L| \rangle$ ,  $\langle L^2 \rangle$  for acentric reflections are 0.5, 0.333 respectively for untwinned datasets, and 0.375, 0.2 for perfectly twinned datasets.



## 5 Model quality [i](#)

### 5.1 Standard geometry [i](#)

Bond lengths and bond angles in the following residue types are not validated in this section: 6CN, GOL

The Z score for a bond length (or angle) is the number of standard deviations the observed value is removed from the expected value. A bond length (or angle) with  $|Z| > 5$  is considered an outlier worth inspection. RMSZ is the root-mean-square of all Z scores of the bond lengths (or angles).

Mol	Chain	Bond lengths		Bond angles	
		RMSZ	# Z  >5	RMSZ	# Z  >5
1	A	0.88	0/1768	0.88	1/2384 (0.0%)
1	B	0.89	0/1774	0.90	3/2393 (0.1%)
All	All	0.88	0/3542	0.89	4/4777 (0.1%)

Chiral center outliers are detected by calculating the chiral volume of a chiral center and verifying if the center is modelled as a planar moiety or with the opposite hand. A planarity outlier is detected by checking planarity of atoms in a peptide group, atoms in a mainchain group or atoms of a sidechain that are expected to be planar.

Mol	Chain	#Chirality outliers	#Planarity outliers
1	A	0	1
1	B	0	1
All	All	0	2

There are no bond length outliers.

All (4) bond angle outliers are listed below:

Mol	Chain	Res	Type	Atoms	Z	Observed(°)	Ideal(°)
1	B	118	ARG	NE-CZ-NH2	-7.66	116.47	120.30
1	A	157	PRO	N-CA-C	5.16	125.52	112.10
1	B	140	ASP	CB-CG-OD1	5.11	122.90	118.30
1	B	157	PRO	N-CA-C	5.09	125.34	112.10

There are no chirality outliers.

All (2) planarity outliers are listed below:

Mol	Chain	Res	Type	Group
1	A	160	ARG	Sidechain
1	B	160	ARG	Sidechain

## 5.2 Too-close contacts

In the following table, the Non-H and H(model) columns list the number of non-hydrogen atoms and hydrogen atoms in the chain respectively. The H(added) column lists the number of hydrogen atoms added and optimized by MolProbity. The Clashes column lists the number of clashes within the asymmetric unit, whereas Symm-Clashes lists symmetry-related clashes.

Mol	Chain	Non-H	H(model)	H(added)	Clashes	Symm-Clashes
1	A	1744	0	1742	28	0
1	B	1740	0	1718	22	0
2	A	21	0	10	0	0
2	B	21	0	10	1	0
3	A	6	0	8	0	0
3	B	6	0	8	0	0
4	A	196	0	0	3	0
4	B	135	0	0	5	0
All	All	3869	0	3496	50	0

The all-atom clashscore is defined as the number of clashes found per 1000 atoms (including hydrogen atoms). The all-atom clashscore for this structure is 7.

All (50) close contacts within the same asymmetric unit are listed below, sorted by their clash magnitude.

Atom-1	Atom-2	Interatomic distance (Å)	Clash overlap (Å)
1:A:118:ARG:HG3	1:A:118:ARG:HH11	1.42	0.85
1:B:81[B]:GLU:HG3	1:B:108:ALA:HB1	1.63	0.81
1:A:88:PHE:HA	1:A:118:ARG:HH12	1.53	0.73
1:A:81[B]:GLU:HG3	1:A:108:ALA:HB1	1.72	0.72
1:B:152:LYS:HE2	4:B:590:HOH:O	1.91	0.70
1:B:37:TYR:HB3	1:B:219:ILE:HD11	1.74	0.69
1:A:88:PHE:HB3	1:A:118:ARG:NH1	2.08	0.68
1:A:37:TYR:HB3	1:A:219:ILE:HD11	1.76	0.68
1:A:118:ARG:HG3	1:A:118:ARG:NH1	2.07	0.68
1:A:88:PHE:CA	1:A:118:ARG:HH12	2.06	0.68
1:B:140:ASP:O	1:B:144[B]:ARG:HG3	1.95	0.66
1:B:37:TYR:HB3	1:B:219:ILE:CD1	2.28	0.64
1:A:37:TYR:HB3	1:A:219:ILE:CD1	2.28	0.63
1:A:88:PHE:CB	1:A:118:ARG:NH1	2.63	0.61
1:B:11:VAL:N	4:B:778:HOH:O	2.35	0.60
1:A:35:ARG:NE	1:A:65[B]:CYS:SG	2.76	0.58
1:A:66[B]:ARG:HD3	1:A:93:ASP:HB2	1.86	0.58
1:B:35:ARG:NE	1:B:65[B]:CYS:SG	2.76	0.58
1:A:11:VAL:N	4:A:777:HOH:O	2.37	0.57

*Continued on next page...*

Continued from previous page...

Atom-1	Atom-2	Interatomic distance (Å)	Clash overlap (Å)
1:B:141[A]:GLU:HG3	4:B:714:HOH:O	2.04	0.57
1:A:124[B]:THR:HG22	1:A:142:ILE:HG22	1.88	0.56
1:B:81[B]:GLU:CG	1:B:108:ALA:HB1	2.35	0.54
1:B:75[B]:ASN:HB2	1:B:80:ASN:OD1	2.07	0.53
1:A:140:ASP:OD2	1:A:166:ARG:NH1	2.42	0.53
1:A:75[B]:ASN:HB2	1:A:80:ASN:OD1	2.08	0.52
1:B:39:ASP:HA	1:B:65[B]:CYS:SG	2.50	0.52
1:B:23[A]:ASN:ND2	4:B:751:HOH:O	2.42	0.52
1:B:124[B]:THR:HG22	1:B:142:ILE:HG22	1.93	0.51
1:A:88:PHE:CB	1:A:118:ARG:HH12	2.24	0.51
1:B:144[A]:ARG:HH21	1:B:166:ARG:HH22	1.58	0.50
1:A:23[B]:ASN:ND2	4:A:752:HOH:O	2.44	0.48
1:A:92:ALA:O	1:A:118:ARG:NH1	2.46	0.48
1:B:35:ARG:NH1	1:B:38[A]:ILE:O	2.47	0.47
1:A:85[A]:ARG:NH1	1:A:115[A]:GLU:OE1	2.40	0.47
1:B:210:ASN:HD22	1:B:210:ASN:C	2.18	0.47
1:A:210:ASN:C	1:A:210:ASN:HD22	2.20	0.45
1:B:111:ASN:O	1:B:115[B]:GLU:HG3	2.17	0.45
1:B:28:LEU:HD22	1:B:62:ARG:HD3	1.99	0.44
1:A:141[B]:GLU:HG3	4:A:755:HOH:O	2.16	0.44
1:B:58:GLU:O	1:B:62:ARG:HB2	2.18	0.44
1:A:39:ASP:HA	1:A:65[B]:CYS:SG	2.57	0.44
1:A:35:ARG:NH1	1:A:38[A]:ILE:O	2.51	0.44
1:A:100[B]:PHE:CG	1:A:101:PRO:HD3	2.53	0.44
1:A:88:PHE:CD1	1:A:118:ARG:NH1	2.86	0.43
1:A:15:LEU:O	1:A:38[B]:ILE:HG23	2.19	0.41
1:B:141[B]:GLU:HG2	4:B:557:HOH:O	2.20	0.41
1:A:48:VAL:HG11	1:A:53:MET:SD	2.61	0.41
1:A:166:ARG:HA	1:A:166:ARG:HD2	1.80	0.41
1:B:72:LYS:HZ2	2:B:302:6CN:H1'	1.84	0.40
1:B:88:PHE:CD1	1:B:118:ARG:HG3	2.55	0.40

There are no symmetry-related clashes.

## 5.3 Torsion angles

### 5.3.1 Protein backbone

In the following table, the Percentiles column shows the percent Ramachandran outliers of the chain as a percentile score with respect to all X-ray entries followed by that with respect to entries of similar resolution.

The Analysed column shows the number of residues for which the backbone conformation was analysed, and the total number of residues.

Mol	Chain	Analysed	Favoured	Allowed	Outliers	Percentiles	
1	A	226/252 (90%)	220 (97%)	6 (3%)	0	100	100
1	B	227/252 (90%)	220 (97%)	7 (3%)	0	100	100
All	All	453/504 (90%)	440 (97%)	13 (3%)	0	100	100

There are no Ramachandran outliers to report.

### 5.3.2 Protein sidechains [i](#)

In the following table, the Percentiles column shows the percent sidechain outliers of the chain as a percentile score with respect to all X-ray entries followed by that with respect to entries of similar resolution.

The Analysed column shows the number of residues for which the sidechain conformation was analysed, and the total number of residues.

Mol	Chain	Analysed	Rotameric	Outliers	Percentiles	
1	A	182/197 (92%)	180 (99%)	2 (1%)	73	61
1	B	183/197 (93%)	182 (100%)	1 (0%)	88	83
All	All	365/394 (93%)	362 (99%)	3 (1%)	78	72

All (3) residues with a non-rotameric sidechain are listed below:

Mol	Chain	Res	Type
1	A	157	PRO
1	A	210	ASN
1	B	210	ASN

Sometimes sidechains can be flipped to improve hydrogen bonding and reduce clashes. All (6) such sidechains are listed below:

Mol	Chain	Res	Type
1	A	13	ASN
1	A	173	GLN
1	A	210	ASN
1	B	136	GLN
1	B	173	GLN
1	B	210	ASN

### 5.3.3 RNA [i](#)

There are no RNA molecules in this entry.

## 5.4 Non-standard residues in protein, DNA, RNA chains [i](#)

There are no non-standard protein/DNA/RNA residues in this entry.

## 5.5 Carbohydrates [i](#)

There are no monosaccharides in this entry.

## 5.6 Ligand geometry [i](#)

4 ligands are modelled in this entry.

In the following table, the Counts columns list the number of bonds (or angles) for which Mogul statistics could be retrieved, the number of bonds (or angles) that are observed in the model and the number of bonds (or angles) that are defined in the Chemical Component Dictionary. The Link column lists molecule types, if any, to which the group is linked. The Z score for a bond length (or angle) is the number of standard deviations the observed value is removed from the expected value. A bond length (or angle) with  $|Z| > 2$  is considered an outlier worth inspection. RMSZ is the root-mean-square of all Z scores of the bond lengths (or angles).

Mol	Type	Chain	Res	Link	Bond lengths			Bond angles		
					Counts	RMSZ	# Z  > 2	Counts	RMSZ	# Z  > 2
3	GOL	B	312	-	5,5,5	0.56	0	5,5,5	0.83	0
3	GOL	A	311	-	5,5,5	0.67	0	5,5,5	0.89	0
2	6CN	A	301	1	22,22,24	1.24	3 (13%)	33,33,36	0.98	3 (9%)
2	6CN	B	302	1	22,22,24	1.32	3 (13%)	33,33,36	1.40	4 (12%)

In the following table, the Chirals column lists the number of chiral outliers, the number of chiral centers analysed, the number of these observed in the model and the number defined in the Chemical Component Dictionary. Similar counts are reported in the Torsion and Rings columns. '-' means no outliers of that kind were identified.

Mol	Type	Chain	Res	Link	Chirals	Torsions	Rings
3	GOL	B	312	-	-	2/4/4/4	-
3	GOL	A	311	-	-	2/4/4/4	-
2	6CN	A	301	1	-	7/10/26/28	0/2/2/2
2	6CN	B	302	1	-	6/10/26/28	0/2/2/2

All (6) bond length outliers are listed below:

Mol	Chain	Res	Type	Atoms	Z	Observed(Å)	Ideal(Å)
2	A	301	6CN	C6-N1	2.60	1.44	1.38
2	B	302	6CN	P-O5'	-2.51	1.52	1.60
2	B	302	6CN	C2-N1	2.21	1.42	1.38
2	B	302	6CN	O2-C2	-2.19	1.19	1.23
2	A	301	6CN	O2-C2	-2.09	1.19	1.23
2	A	301	6CN	C4-N3	2.01	1.42	1.38

All (7) bond angle outliers are listed below:

Mol	Chain	Res	Type	Atoms	Z	Observed(°)	Ideal(°)
2	B	302	6CN	O2P-P-O1P	-4.12	91.88	107.64
2	B	302	6CN	O5'-P-O3P	3.74	116.97	106.47
2	B	302	6CN	O2P-P-O5'	3.33	115.59	106.73
2	B	302	6CN	O5'-C5'-C4'	-2.46	100.54	108.99
2	A	301	6CN	C5-C6-N1	-2.16	118.19	121.81
2	A	301	6CN	O5'-C5'-C4'	-2.09	101.78	108.99
2	A	301	6CN	C6-C5-C4	2.08	122.36	119.52

There are no chirality outliers.

All (17) torsion outliers are listed below:

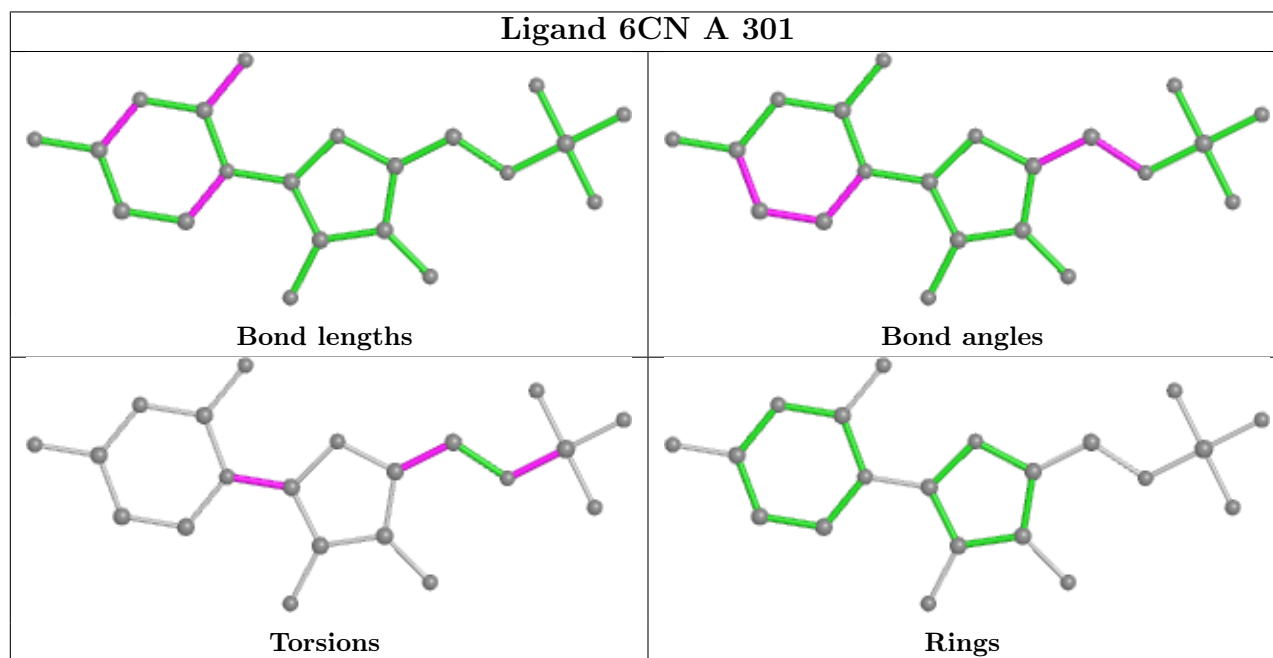
Mol	Chain	Res	Type	Atoms
2	A	301	6CN	C5'-O5'-P-O3P
2	A	301	6CN	C5'-O5'-P-O2P
2	B	302	6CN	C5'-O5'-P-O1P
3	A	311	GOL	O1-C1-C2-C3
3	B	312	GOL	O1-C1-C2-C3
3	A	311	GOL	O1-C1-C2-O2
3	B	312	GOL	O1-C1-C2-O2
2	B	302	6CN	C5'-O5'-P-O3P
2	A	301	6CN	O4'-C1'-N1-C6
2	B	302	6CN	O4'-C1'-N1-C6
2	A	301	6CN	O4'-C1'-N1-C2
2	B	302	6CN	O4'-C1'-N1-C2
2	B	302	6CN	O4'-C4'-C5'-O5'
2	A	301	6CN	C5'-O5'-P-O1P
2	A	301	6CN	C2'-C1'-N1-C2
2	A	301	6CN	O4'-C4'-C5'-O5'
2	B	302	6CN	C2'-C1'-N1-C2

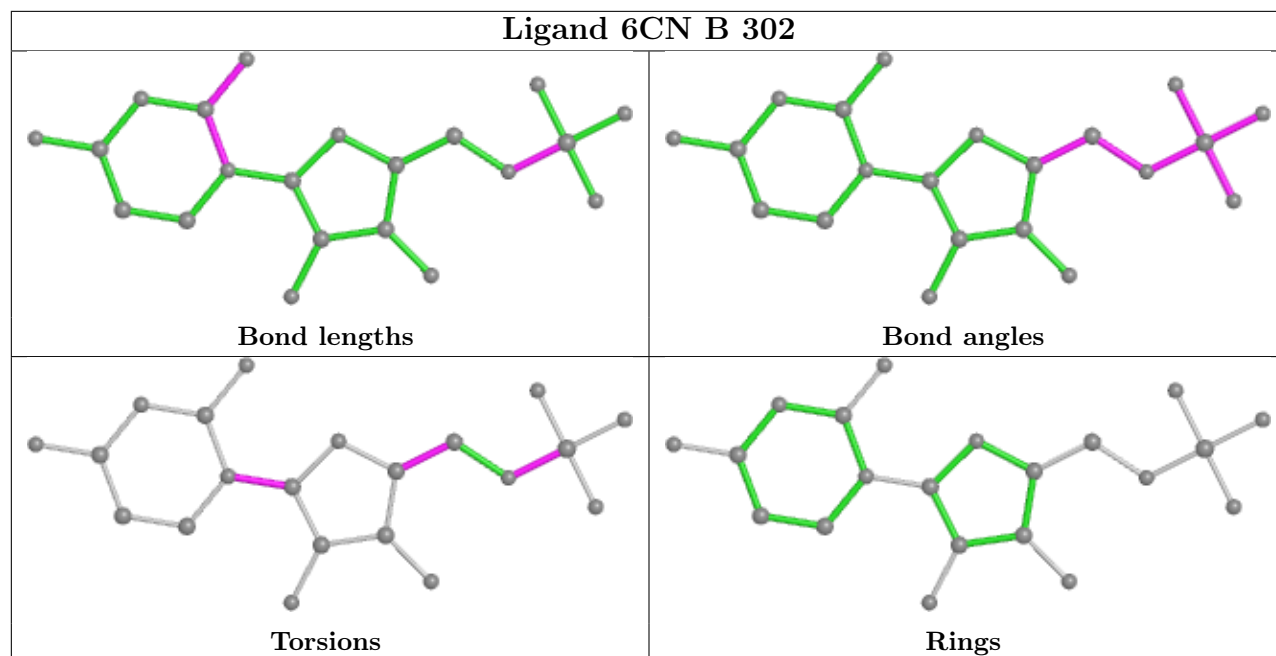
There are no ring outliers.

1 monomer is involved in 1 short contact:

Mol	Chain	Res	Type	Clashes	Symm-Clashes
2	B	302	6CN	1	0

The following is a two-dimensional graphical depiction of Mogul quality analysis of bond lengths, bond angles, torsion angles, and ring geometry for all instances of the Ligand of Interest. In addition, ligands with molecular weight > 250 and outliers as shown on the validation Tables will also be included. For torsion angles, if less than 5% of the Mogul distribution of torsion angles is within 10 degrees of the torsion angle in question, then that torsion angle is considered an outlier. Any bond that is central to one or more torsion angles identified as an outlier by Mogul will be highlighted in the graph. For rings, the root-mean-square deviation (RMSD) between the ring in question and similar rings identified by Mogul is calculated over all ring torsion angles. If the average RMSD is greater than 60 degrees and the minimal RMSD between the ring in question and any Mogul-identified rings is also greater than 60 degrees, then that ring is considered an outlier. The outliers are highlighted in purple. The color gray indicates Mogul did not find sufficient equivalents in the CSD to analyse the geometry.





## 5.7 Other polymers [i](#)

There are no such residues in this entry.

## 5.8 Polymer linkage issues [i](#)

There are no chain breaks in this entry.



## 6 Fit of model and data [i](#)

### 6.1 Protein, DNA and RNA chains [i](#)

In the following table, the column labelled ‘#RSRZ> 2’ contains the number (and percentage) of RSRZ outliers, followed by percent RSRZ outliers for the chain as percentile scores relative to all X-ray entries and entries of similar resolution. The OWAB column contains the minimum, median, 95<sup>th</sup> percentile and maximum values of the occupancy-weighted average B-factor per residue. The column labelled ‘Q< 0.9’ lists the number of (and percentage) of residues with an average occupancy less than 0.9.

Mol	Chain	Analysed	<RSRZ>	#RSRZ>2	OWAB(Å <sup>2</sup> )	Q<0.9
1	A	215/252 (85%)	-0.53	4 (1%) 66 70	8, 12, 31, 49	0
1	B	215/252 (85%)	-0.54	2 (0%) 84 87	8, 12, 29, 50	0
All	All	430/504 (85%)	-0.54	6 (1%) 75 79	8, 12, 31, 50	0

All (6) RSRZ outliers are listed below:

Mol	Chain	Res	Type	RSRZ
1	B	222	ILE	3.8
1	A	225	LEU	3.6
1	B	225	LEU	2.8
1	A	222	ILE	2.2
1	A	224	ASP	2.2
1	A	38[A]	ILE	2.0

### 6.2 Non-standard residues in protein, DNA, RNA chains [i](#)

There are no non-standard protein/DNA/RNA residues in this entry.

### 6.3 Carbohydrates [i](#)

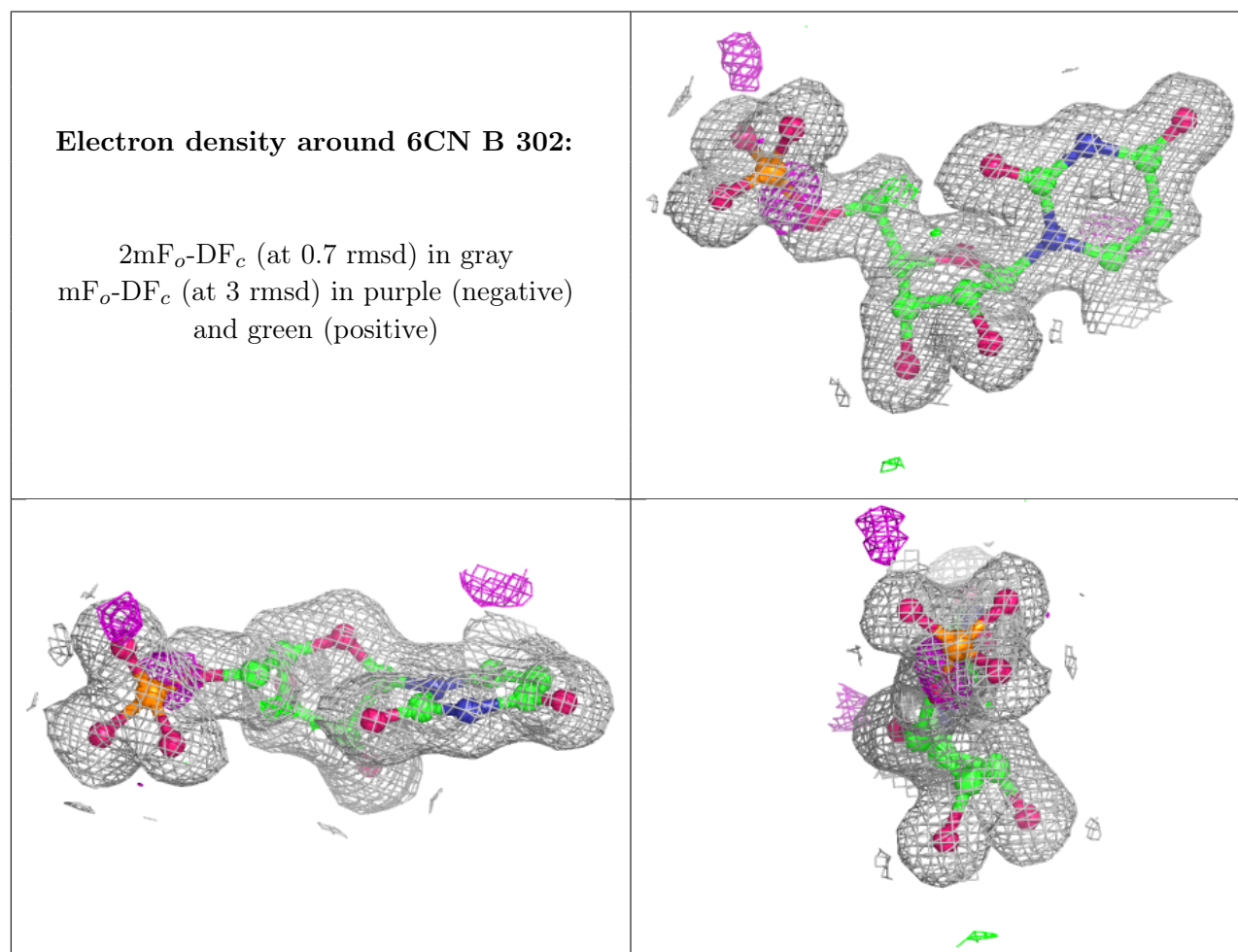
There are no monosaccharides in this entry.

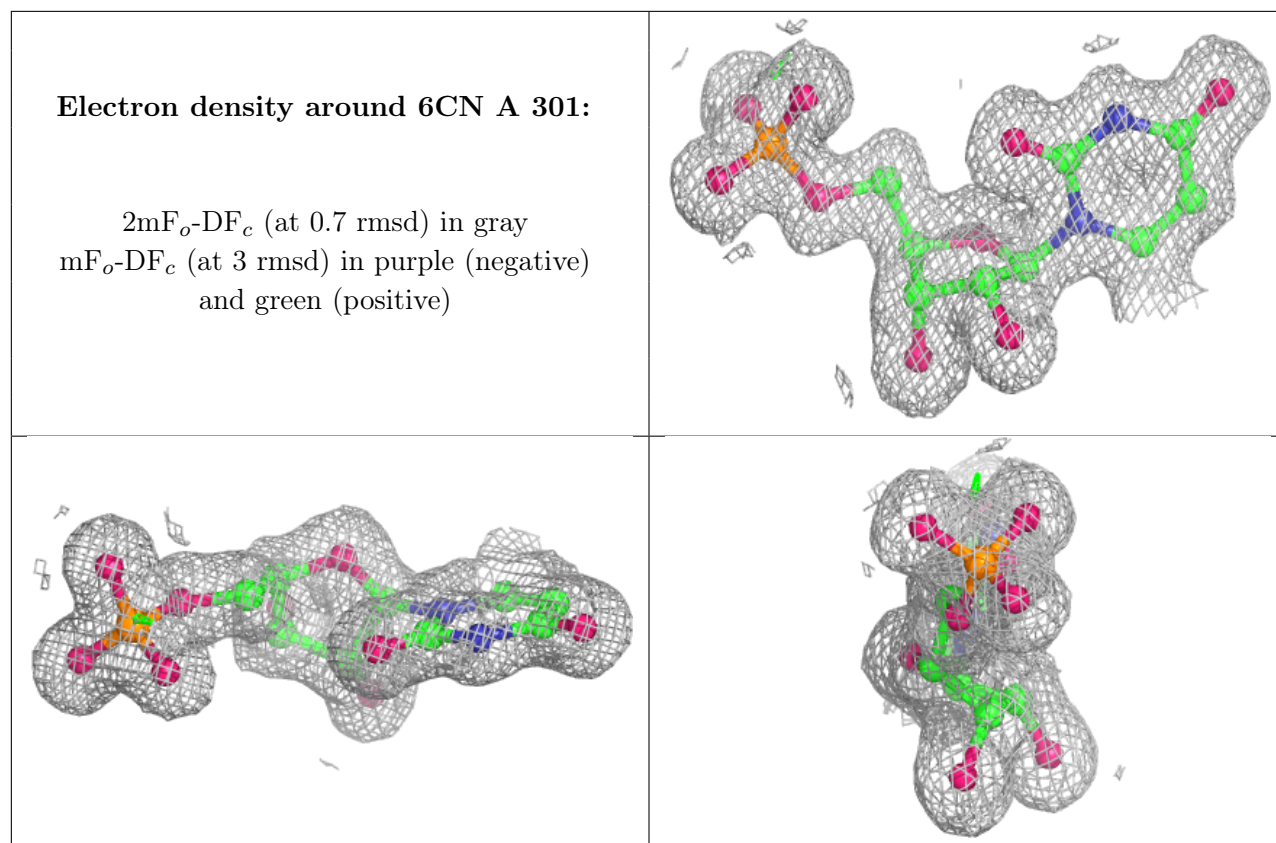
### 6.4 Ligands [i](#)

In the following table, the Atoms column lists the number of modelled atoms in the group and the number defined in the chemical component dictionary. The B-factors column lists the minimum, median, 95<sup>th</sup> percentile and maximum values of B factors of atoms in the group. The column labelled ‘Q< 0.9’ lists the number of atoms with occupancy less than 0.9.

Mol	Type	Chain	Res	Atoms	RSCC	RSR	B-factors( $\text{\AA}^2$ )	Q<0.9
3	GOL	B	312	6/6	0.85	0.17	25,33,37,44	0
3	GOL	A	311	6/6	0.89	0.14	24,32,36,44	0
2	6CN	B	302	21/23	0.98	0.06	6,8,10,11	0
2	6CN	A	301	21/23	0.99	0.05	6,8,10,11	0

The following is a graphical depiction of the model fit to experimental electron density of all instances of the Ligand of Interest. In addition, ligands with molecular weight > 250 and outliers as shown on the geometry validation Tables will also be included. Each fit is shown from different orientation to approximate a three-dimensional view.





## 6.5 Other polymers [i](#)

There are no such residues in this entry.