



Full wwPDB X-ray Structure Validation Report ⓘ

Mar 17, 2022 – 07:26 AM JST

PDB ID : 5ZKC
Title : Crystal structure of rationally thermostabilized M2 muscarinic acetylcholine receptor bound with NMS
Authors : Suno, R.; Maeda, S.; Yasuda, S.; Yamashita, K.; Hirata, K.; Horita, S.; Tawaramoto, M.S.; Tsujimoto, H.; Murata, T.; Kinoshita, M.; Yamamoto, M.; Kobilka, B.K.; Iwata, S.; Kobayashi, T.
Deposited on : 2018-03-23
Resolution : 2.30 Å(reported)

This is a Full wwPDB X-ray Structure Validation Report for a publicly released PDB entry.

We welcome your comments at validation@mail.wwpdb.org

A user guide is available at

<https://www.wwpdb.org/validation/2017/XrayValidationReportHelp>

with specific help available everywhere you see the ⓘ symbol.

The following versions of software and data (see [references ⓘ](#)) were used in the production of this report:

MolProbity : 4.02b-467
Mogul : 1.8.5 (274361), CSD as541be (2020)
Xtriage (Phenix) : 1.13
EDS : 2.27
buster-report : 1.1.7 (2018)
Percentile statistics : 20191225.v01 (using entries in the PDB archive December 25th 2019)
Refmac : 5.8.0158
CCP4 : 7.0.044 (Gargrove)
Ideal geometry (proteins) : Engh & Huber (2001)
Ideal geometry (DNA, RNA) : Parkinson et al. (1996)
Validation Pipeline (wwPDB-VP) : 2.27

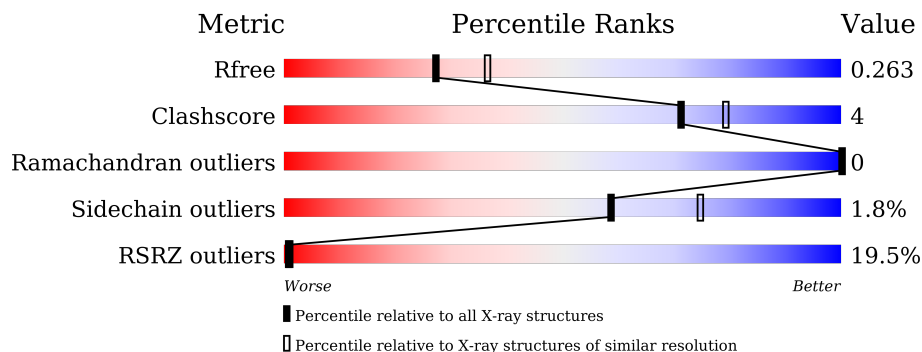
1 Overall quality at a glance

The following experimental techniques were used to determine the structure:

X-RAY DIFFRACTION

The reported resolution of this entry is 2.30 Å.

Percentile scores (ranging between 0-100) for global validation metrics of the entry are shown in the following graphic. The table shows the number of entries on which the scores are based.



Metric	Whole archive (#Entries)	Similar resolution (#Entries, resolution range(Å))
R_{free}	130704	5042 (2.30-2.30)
Clashscore	141614	5643 (2.30-2.30)
Ramachandran outliers	138981	5575 (2.30-2.30)
Sidechain outliers	138945	5575 (2.30-2.30)
RSRZ outliers	127900	4938 (2.30-2.30)

The table below summarises the geometric issues observed across the polymeric chains and their fit to the electron density. The red, orange, yellow and green segments of the lower bar indicate the fraction of residues that contain outliers for ≥ 3 , 2, 1 and 0 types of geometric quality criteria respectively. A grey segment represents the fraction of residues that are not modelled. The numeric value for each fraction is indicated below the corresponding segment, with a dot representing fractions $\leq 5\%$. The upper red bar (where present) indicates the fraction of residues that have poor fit to the electron density. The numeric value is given above the bar.

Mol	Chain	Length	Quality of chain
1	A	421	

2 Entry composition [i](#)

There are 3 unique types of molecules in this entry. The entry contains 3105 atoms, of which 0 are hydrogens and 0 are deuteriums.

In the tables below, the ZeroOcc column contains the number of atoms modelled with zero occupancy, the AltConf column contains the number of residues with at least one atom in alternate conformation and the Trace column contains the number of residues modelled with at most 2 atoms.

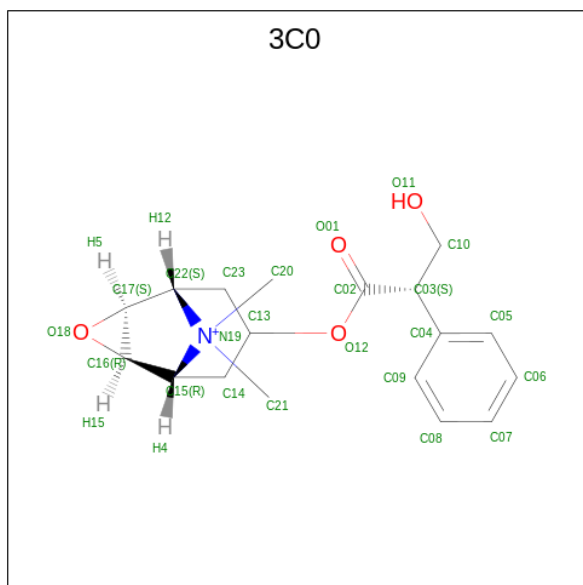
- Molecule 1 is a protein called Muscarinic acetylcholine receptor M2,Apo-cytochrome b562,Muscarinic acetylcholine receptor M2.

Mol	Chain	Residues	Atoms					ZeroOcc	AltConf	Trace
			Total	C	N	O	S			
1	A	384	3048	2005	491	530	22	0	1	0

There are 18 discrepancies between the modelled and reference sequences:

Chain	Residue	Modelled	Actual	Comment	Reference
A	-1	GLY	-	expression tag	UNP P08172
A	0	PRO	-	expression tag	UNP P08172
A	1	MET	-	expression tag	UNP P08172
A	2	ASP	-	expression tag	UNP P08172
A	3	ASP	-	expression tag	UNP P08172
A	4	SER	-	expression tag	UNP P08172
A	5	THR	-	expression tag	UNP P08172
A	6	ASP	-	expression tag	UNP P08172
A	7	SER	-	expression tag	UNP P08172
A	8	SER	-	expression tag	UNP P08172
A	9	ASP	-	expression tag	UNP P08172
A	110	ARG	SER	engineered mutation	UNP P08172
A	467	LEU	-	expression tag	UNP P08172
A	468	GLU	-	expression tag	UNP P08172
A	469	VAL	-	expression tag	UNP P08172
A	470	LEU	-	expression tag	UNP P08172
A	471	PHE	-	expression tag	UNP P08172
A	472	GLN	-	expression tag	UNP P08172

- Molecule 2 is N-methyl scopolamine (three-letter code: 3C0) (formula: C₁₈H₂₄NO₄).



Mol	Chain	Residues	Atoms				ZeroOcc	AltConf
			Total	C	N	O		
2	A	1	23	18	1	4	0	0

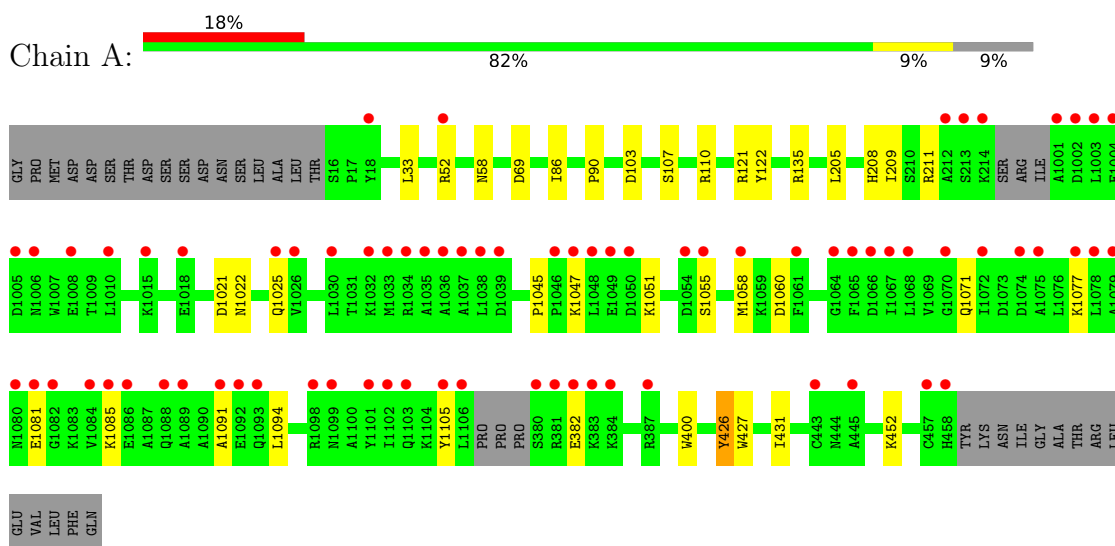
- Molecule 3 is water.

Mol	Chain	Residues	Atoms		ZeroOcc	AltConf
			Total	O		
3	A	34	34	34	0	0

3 Residue-property plots

These plots are drawn for all protein, RNA, DNA and oligosaccharide chains in the entry. The first graphic for a chain summarises the proportions of the various outlier classes displayed in the second graphic. The second graphic shows the sequence view annotated by issues in geometry and electron density. Residues are color-coded according to the number of geometric quality criteria for which they contain at least one outlier: green = 0, yellow = 1, orange = 2 and red = 3 or more. A red dot above a residue indicates a poor fit to the electron density ($RSRZ > 2$). Stretches of 2 or more consecutive residues without any outlier are shown as a green connector. Residues present in the sample, but not in the model, are shown in grey.

- Molecule 1: Muscarinic acetylcholine receptor M2,Apo-cytochrome b562,Muscarinic acetylcholine receptor M2



4 Data and refinement statistics

Property	Value	Source
Space group	P 1 21 1	Depositor
Cell constants a, b, c, α , β , γ	46.43Å 58.96Å 88.97Å 90.00° 98.82° 90.00°	Depositor
Resolution (Å)	48.97 – 2.30 48.97 – 2.30	Depositor EDS
% Data completeness (in resolution range)	99.9 (48.97-2.30) 99.9 (48.97-2.30)	Depositor EDS
R_{merge}	(Not available)	Depositor
R_{sym}	(Not available)	Depositor
$\langle I/\sigma(I) \rangle$ ¹	1.40 (at 2.29Å)	Xtrriage
Refinement program	PHENIX (1.11.1_2575: ???)	Depositor
R, R_{free}	0.231 , 0.259 0.232 , 0.263	Depositor DCC
R_{free} test set	1143 reflections (5.36%)	wwPDB-VP
Wilson B-factor (Å ²)	35.7	Xtrriage
Anisotropy	0.609	Xtrriage
Bulk solvent k_{sol} (e/Å ³), B_{sol} (Å ²)	0.31 , 64.0	EDS
L-test for twinning ²	$\langle L \rangle = 0.48$, $\langle L^2 \rangle = 0.32$	Xtrriage
Estimated twinning fraction	No twinning to report.	Xtrriage
F_o, F_c correlation	0.93	EDS
Total number of atoms	3105	wwPDB-VP
Average B, all atoms (Å ²)	72.0	wwPDB-VP

Xtrriage's analysis on translational NCS is as follows: *The largest off-origin peak in the Patterson function is 9.04% of the height of the origin peak. No significant pseudotranslation is detected.*

¹Intensities estimated from amplitudes.

²Theoretical values of $\langle |L| \rangle$, $\langle L^2 \rangle$ for acentric reflections are 0.5, 0.333 respectively for untwinned datasets, and 0.375, 0.2 for perfectly twinned datasets.

5 Model quality [i](#)

5.1 Standard geometry [i](#)

Bond lengths and bond angles in the following residue types are not validated in this section: 3C0

The Z score for a bond length (or angle) is the number of standard deviations the observed value is removed from the expected value. A bond length (or angle) with $|Z| > 5$ is considered an outlier worth inspection. RMSZ is the root-mean-square of all Z scores of the bond lengths (or angles).

Mol	Chain	Bond lengths		Bond angles	
		RMSZ	# Z >5	RMSZ	# Z >5
1	A	0.24	0/3122	0.37	0/4255

There are no bond length outliers.

There are no bond angle outliers.

There are no chirality outliers.

There are no planarity outliers.

5.2 Too-close contacts [i](#)

In the following table, the Non-H and H(model) columns list the number of non-hydrogen atoms and hydrogen atoms in the chain respectively. The H(added) column lists the number of hydrogen atoms added and optimized by MolProbity. The Clashes column lists the number of clashes within the asymmetric unit, whereas Symm-Clashes lists symmetry-related clashes.

Mol	Chain	Non-H	H(model)	H(added)	Clashes	Symm-Clashes
1	A	3048	0	3115	21	0
2	A	23	0	24	2	0
3	A	34	0	0	0	0
All	All	3105	0	3139	22	0

The all-atom clashscore is defined as the number of clashes found per 1000 atoms (including hydrogen atoms). The all-atom clashscore for this structure is 4.

All (22) close contacts within the same asymmetric unit are listed below, sorted by their clash magnitude.

Atom-1	Atom-2	Interatomic distance (Å)	Clash overlap (Å)
1:A:121:ARG:HH12	1:A:382:GLU:HB3	1.54	0.72

Continued on next page...

Continued from previous page...

Atom-1	Atom-2	Interatomic distance (Å)	Clash overlap (Å)
1:A:1051:LYS:HE2	1:A:1055:SER:HB2	1.80	0.62
1:A:58:ASN:OD1	1:A:135:ARG:NH2	2.36	0.58
2:A:501:3C0:H8	2:A:501:3C0:O18	2.06	0.56
1:A:1077:LYS:O	1:A:1081:GLU:HG2	2.12	0.50
1:A:1091:ALA:HA	1:A:1094:LEU:HD12	1.93	0.49
1:A:1047:LYS:HE3	1:A:1058:MET:HA	1.94	0.49
1:A:205:LEU:O	1:A:209:ILE:HG12	2.13	0.49
1:A:122:TYR:HA	1:A:209:ILE:HD11	1.96	0.48
1:A:107:SER:HB3	1:A:400:TRP:HH2	1.79	0.47
1:A:1021:ASP:H	1:A:1025:GLN:NE2	2.12	0.47
1:A:121:ARG:HG3	1:A:209:ILE:HD12	1.96	0.47
1:A:1045:PRO:HG2	1:A:1047:LYS:HG3	1.97	0.47
1:A:33:LEU:HD13	1:A:431:ILE:HD11	1.97	0.46
1:A:1022:ASN:OD1	1:A:1025:GLN:NE2	2.47	0.46
1:A:427:TRP:O	1:A:431:ILE:HG12	2.15	0.46
1:A:208:HIS:CE1	1:A:211:ARG:HH22	2.34	0.46
1:A:86:ILE:HD12	1:A:90:PRO:HG3	1.99	0.45
1:A:1071:GLN:HE21	1:A:1094:LEU:HD23	1.82	0.43
1:A:452:LYS:HE2	1:A:452:LYS:HB3	1.88	0.42
1:A:69:ASP:OD1	1:A:110:ARG:NH2	2.51	0.41
1:A:426:TYR:CZ	2:A:501:3C0:H4	2.56	0.40

There are no symmetry-related clashes.

5.3 Torsion angles [i](#)

5.3.1 Protein backbone [i](#)

In the following table, the Percentiles column shows the percent Ramachandran outliers of the chain as a percentile score with respect to all X-ray entries followed by that with respect to entries of similar resolution.

The Analysed column shows the number of residues for which the backbone conformation was analysed, and the total number of residues.

Mol	Chain	Analysed	Favoured	Allowed	Outliers	Percentiles
1	A	379/421 (90%)	375 (99%)	4 (1%)	0	100 100

There are no Ramachandran outliers to report.

5.3.2 Protein sidechains [i](#)

In the following table, the Percentiles column shows the percent sidechain outliers of the chain as a percentile score with respect to all X-ray entries followed by that with respect to entries of similar resolution.

The Analysed column shows the number of residues for which the sidechain conformation was analysed, and the total number of residues.

Mol	Chain	Analysed	Rotameric	Outliers	Percentiles
1	A	330/363 (91%)	324 (98%)	6 (2%)	59 75

All (6) residues with a non-rotameric sidechain are listed below:

Mol	Chain	Res	Type
1	A	52	ARG
1	A	103	ASP
1	A	1060	ASP
1	A	1085	LYS
1	A	1105	TYR
1	A	426	TYR

Sometimes sidechains can be flipped to improve hydrogen bonding and reduce clashes. All (4) such sidechains are listed below:

Mol	Chain	Res	Type
1	A	1025	GLN
1	A	1041	GLN
1	A	1071	GLN
1	A	1103	GLN

5.3.3 RNA [i](#)

There are no RNA molecules in this entry.

5.4 Non-standard residues in protein, DNA, RNA chains [i](#)

There are no non-standard protein/DNA/RNA residues in this entry.

5.5 Carbohydrates [i](#)

There are no monosaccharides in this entry.

5.6 Ligand geometry

1 ligand is modelled in this entry.

In the following table, the Counts columns list the number of bonds (or angles) for which Mogul statistics could be retrieved, the number of bonds (or angles) that are observed in the model and the number of bonds (or angles) that are defined in the Chemical Component Dictionary. The Link column lists molecule types, if any, to which the group is linked. The Z score for a bond length (or angle) is the number of standard deviations the observed value is removed from the expected value. A bond length (or angle) with $|Z| > 2$ is considered an outlier worth inspection. RMSZ is the root-mean-square of all Z scores of the bond lengths (or angles).

Mol	Type	Chain	Res	Link	Bond lengths			Bond angles		
					Counts	RMSZ	# Z > 2	Counts	RMSZ	# Z > 2
2	3C0	A	501	-	24,26,26	2.09	2 (8%)	38,40,40	2.30	10 (26%)

In the following table, the Chirals column lists the number of chiral outliers, the number of chiral centers analysed, the number of these observed in the model and the number defined in the Chemical Component Dictionary. Similar counts are reported in the Torsion and Rings columns. '-' means no outliers of that kind were identified.

Mol	Type	Chain	Res	Link	Chirals	Torsions	Rings
2	3C0	A	501	-	-	0/14/47/47	0/5/4/4

All (2) bond length outliers are listed below:

Mol	Chain	Res	Type	Atoms	Z	Observed(Å)	Ideal(Å)
2	A	501	3C0	C04-C03	-8.99	1.39	1.52
2	A	501	3C0	C16-C17	2.20	1.51	1.46

All (10) bond angle outliers are listed below:

Mol	Chain	Res	Type	Atoms	Z	Observed(°)	Ideal(°)
2	A	501	3C0	C15-C16-C17	-6.23	103.64	107.46
2	A	501	3C0	C22-C17-C16	-5.88	103.85	107.46
2	A	501	3C0	C23-C22-N19	5.29	112.15	108.82
2	A	501	3C0	O18-C16-C15	4.79	121.59	117.11
2	A	501	3C0	O18-C17-C22	3.89	120.75	117.11
2	A	501	3C0	C14-C15-N19	3.42	110.97	108.82
2	A	501	3C0	C14-C15-C16	3.35	109.80	107.04
2	A	501	3C0	O12-C13-C23	2.69	114.25	107.79
2	A	501	3C0	O12-C02-C03	2.29	113.57	111.16
2	A	501	3C0	C17-C22-N19	2.20	104.91	103.54

There are no chirality outliers.

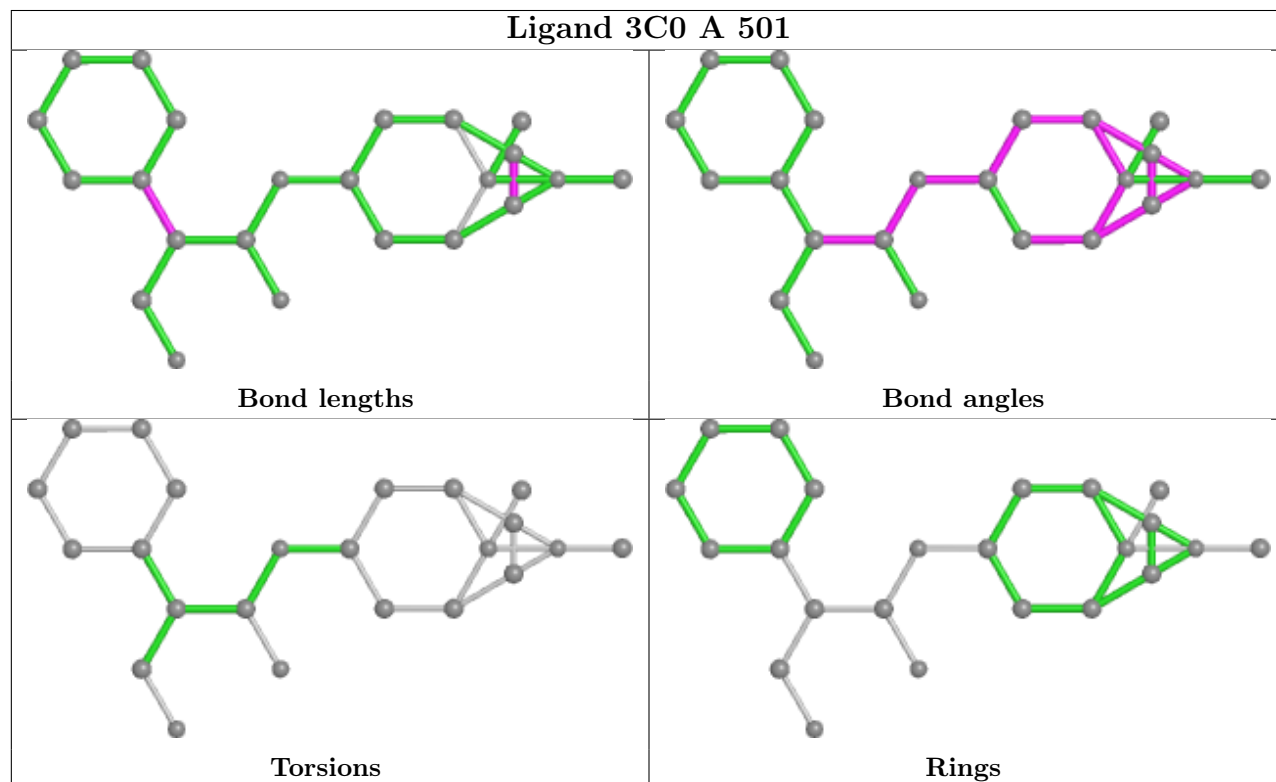
There are no torsion outliers.

There are no ring outliers.

1 monomer is involved in 2 short contacts:

Mol	Chain	Res	Type	Clashes	Symm-Clashes
2	A	501	3C0	2	0

The following is a two-dimensional graphical depiction of Mogul quality analysis of bond lengths, bond angles, torsion angles, and ring geometry for all instances of the Ligand of Interest. In addition, ligands with molecular weight > 250 and outliers as shown on the validation Tables will also be included. For torsion angles, if less than 5% of the Mogul distribution of torsion angles is within 10 degrees of the torsion angle in question, then that torsion angle is considered an outlier. Any bond that is central to one or more torsion angles identified as an outlier by Mogul will be highlighted in the graph. For rings, the root-mean-square deviation (RMSD) between the ring in question and similar rings identified by Mogul is calculated over all ring torsion angles. If the average RMSD is greater than 60 degrees and the minimal RMSD between the ring in question and any Mogul-identified rings is also greater than 60 degrees, then that ring is considered an outlier. The outliers are highlighted in purple. The color gray indicates Mogul did not find sufficient equivalents in the CSD to analyse the geometry.



5.7 Other polymers [i](#)

There are no such residues in this entry.

5.8 Polymer linkage issues

There are no chain breaks in this entry.

6 Fit of model and data

6.1 Protein, DNA and RNA chains

In the following table, the column labelled ‘#RSRZ> 2’ contains the number (and percentage) of RSRZ outliers, followed by percent RSRZ outliers for the chain as percentile scores relative to all X-ray entries and entries of similar resolution. The OWAB column contains the minimum, median, 95th percentile and maximum values of the occupancy-weighted average B-factor per residue. The column labelled ‘Q< 0.9’ lists the number of (and percentage) of residues with an average occupancy less than 0.9.

Mol	Chain	Analysed	<RSRZ>	#RSRZ>2	OWAB(Å ²)	Q<0.9
1	A	384/421 (91%)	1.10	75 (19%) 1 1	27, 52, 154, 217	0

All (75) RSRZ outliers are listed below:

Mol	Chain	Res	Type	RSRZ
1	A	1003	LEU	12.8
1	A	1075	ALA	8.9
1	A	1066	ASP	8.5
1	A	1038	LEU	7.9
1	A	1070	GLY	7.2
1	A	1068	LEU	7.2
1	A	1001	ALA	7.2
1	A	1067	ILE	7.1
1	A	1035	ALA	6.8
1	A	1078	LEU	6.7
1	A	1101	TYR	6.1
1	A	1082	GLY	5.9
1	A	380	SER	5.8
1	A	1072	ILE	5.4
1	A	1074	ASP	5.3
1	A	1091	ALA	5.3
1	A	1034	ARG	5.2
1	A	1084	VAL	5.0
1	A	1089	ALA	4.8
1	A	1079	ALA	4.7
1	A	1093	GLN	4.5
1	A	1047	LYS	4.3
1	A	381	ARG	4.1
1	A	1033	MET	4.0
1	A	1077	LYS	4.0
1	A	1054	ASP	4.0
1	A	1002	ASP	3.9

Continued on next page...

Continued from previous page...

Mol	Chain	Res	Type	RSRZ
1	A	1036	ALA	3.9
1	A	1106	LEU	3.9
1	A	1065	PHE	3.7
1	A	18	TYR	3.7
1	A	1086	GLU	3.7
1	A	382	GLU	3.5
1	A	387	ARG	3.5
1	A	1081	GLU	3.5
1	A	1037	ALA	3.5
1	A	1005	ASP	3.4
1	A	1085	LYS	3.4
1	A	457	CYS	3.2
1	A	1030	LEU	3.1
1	A	1026	VAL	3.1
1	A	1006	ASN	3.1
1	A	1032	LYS	3.0
1	A	1008	GLU	2.9
1	A	1048	LEU	2.9
1	A	1064	GLY	2.9
1	A	1092	GLU	2.9
1	A	1103	GLN	2.8
1	A	1046	PRO	2.7
1	A	1080	ASN	2.7
1	A	1098	ARG	2.7
1	A	1102	ILE	2.6
1	A	1088	GLN	2.6
1	A	1039	ASP	2.6
1	A	1049	GLU	2.6
1	A	1058	MET	2.6
1	A	1015	LYS	2.6
1	A	1050	ASP	2.6
1	A	214	LYS	2.6
1	A	1061	PHE	2.5
1	A	1055	SER	2.5
1	A	384	LYS	2.4
1	A	1004	GLU	2.4
1	A	1099	ASN	2.4
1	A	458	HIS	2.3
1	A	1018	GLU	2.3
1	A	213	SER	2.3
1	A	443	CYS	2.2
1	A	1025	GLN	2.2

Continued on next page...

Continued from previous page...

Mol	Chain	Res	Type	RSRZ
1	A	445	ALA	2.2
1	A	1010	LEU	2.2
1	A	212	ALA	2.1
1	A	52	ARG	2.1
1	A	383	LYS	2.1
1	A	1105	TYR	2.0

6.2 Non-standard residues in protein, DNA, RNA chains [i](#)

There are no non-standard protein/DNA/RNA residues in this entry.

6.3 Carbohydrates [i](#)

There are no monosaccharides in this entry.

6.4 Ligands [i](#)

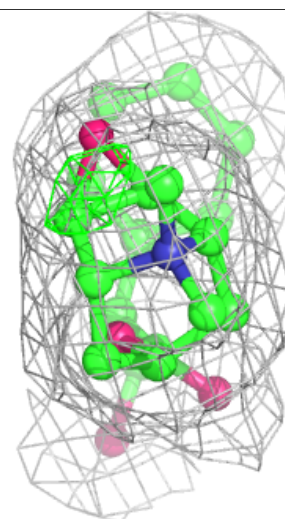
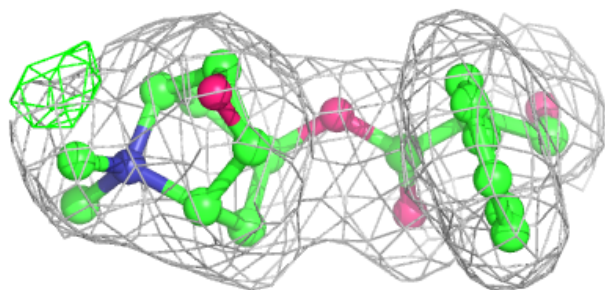
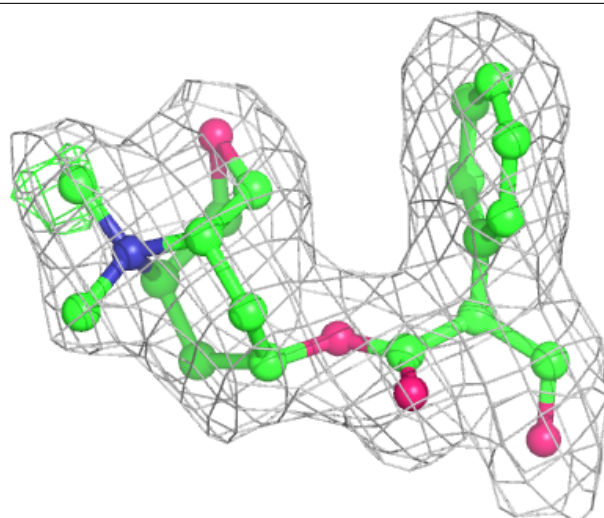
In the following table, the Atoms column lists the number of modelled atoms in the group and the number defined in the chemical component dictionary. The B-factors column lists the minimum, median, 95th percentile and maximum values of B factors of atoms in the group. The column labelled 'Q< 0.9' lists the number of atoms with occupancy less than 0.9.

Mol	Type	Chain	Res	Atoms	RSCC	RSR	B-factors(Å ²)	Q<0.9
2	3C0	A	501	23/23	0.95	0.16	25,30,34,34	0

The following is a graphical depiction of the model fit to experimental electron density of all instances of the Ligand of Interest. In addition, ligands with molecular weight > 250 and outliers as shown on the geometry validation Tables will also be included. Each fit is shown from different orientation to approximate a three-dimensional view.

Electron density around 3C0 A 501:

$2mF_o-DF_c$ (at 0.7 rmsd) in gray
 mF_o-DF_c (at 3 rmsd) in purple (negative)
and green (positive)



6.5 Other polymers [i](#)

There are no such residues in this entry.