



## Full wwPDB EM Validation Report ⓘ

Dec 17, 2022 – 04:41 pm GMT

PDB ID : 6ZGH  
EMDB ID : EMD-11206  
Title : Furin Cleaved Spike Protein of SARS-CoV-2 in Intermediate Conformation  
Authors : Wrobel, A.G.; Benton, D.J.; Rosenthal, P.B.; Gamblin, S.J.  
Deposited on : 2020-06-18  
Resolution : 6.80 Å (reported)  
Based on initial model : 6VXX

This is a Full wwPDB EM Validation Report for a publicly released PDB entry.

We welcome your comments at [validation@mail.wwpdb.org](mailto:validation@mail.wwpdb.org)

A user guide is available at

<https://www.wwpdb.org/validation/2017/EMValidationReportHelp>

with specific help available everywhere you see the ⓘ symbol.

The types of validation reports are described at

<http://www.wwpdb.org/validation/2017/FAQs#types>.

---

The following versions of software and data (see [references ⓘ](#)) were used in the production of this report:

EMDB validation analysis : 0.0.1.dev43  
MolProbity : 4.02b-467  
Percentile statistics : 20191225.v01 (using entries in the PDB archive December 25th 2019)  
MapQ : 1.9.9  
Ideal geometry (proteins) : Engh & Huber (2001)  
Ideal geometry (DNA, RNA) : Parkinson et al. (1996)  
Validation Pipeline (wwPDB-VP) : 2.31.3

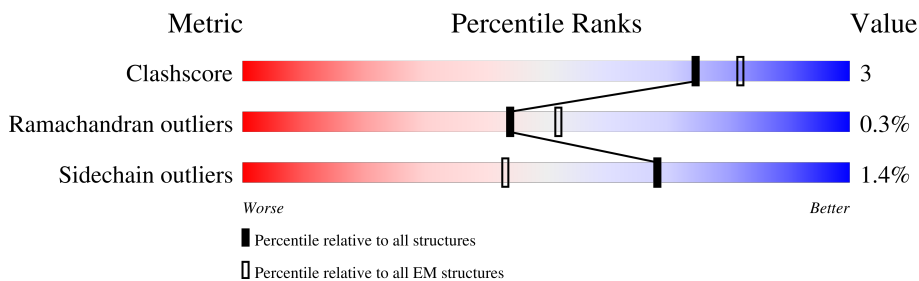
# 1 Overall quality at a glance

The following experimental techniques were used to determine the structure:

*ELECTRON MICROSCOPY*

The reported resolution of this entry is 6.80 Å.

Percentile scores (ranging between 0-100) for global validation metrics of the entry are shown in the following graphic. The table shows the number of entries on which the scores are based.



Metric	Whole archive (#Entries)	EM structures (#Entries)
Clashscore	158937	4297
Ramachandran outliers	154571	4023
Sidechain outliers	154315	3826

The table below summarises the geometric issues observed across the polymeric chains and their fit to the map. The red, orange, yellow and green segments of the bar indicate the fraction of residues that contain outliers for  $\geq 3$ , 2, 1 and 0 types of geometric quality criteria respectively. A grey segment represents the fraction of residues that are not modelled. The numeric value for each fraction is indicated below the corresponding segment, with a dot representing fractions  $\leq 5\%$ . The upper red bar (where present) indicates the fraction of residues that have poor fit to the EM map (all-atom inclusion  $< 40\%$ ). The numeric value is given above the bar.

Mol	Chain	Length	Quality of chain
1	A	1287	
1	B	1287	
1	C	1287	

## 2 Entry composition i

There is only 1 type of molecule in this entry. The entry contains 23720 atoms, of which 0 are hydrogens and 0 are deuteriums.

In the tables below, the AltConf column contains the number of residues with at least one atom in alternate conformation and the Trace column contains the number of residues modelled with at most 2 atoms.

- Molecule 1 is a protein called Spike glycoprotein.

Mol	Chain	Residues	Atoms					AltConf	Trace
			Total	C	N	O	S		
1	A	875	6831	4353	1142	1305	31	0	0
1	B	1077	8434	5382	1409	1604	39	0	0
1	C	1080	8455	5394	1415	1607	39	0	0

There are 243 discrepancies between the modelled and reference sequences:

Chain	Residue	Modelled	Actual	Comment	Reference
A	-30	MET	-	initiating methionine	UNP P0DTC2
A	-29	GLY	-	expression tag	UNP P0DTC2
A	-28	ILE	-	expression tag	UNP P0DTC2
A	-27	LEU	-	expression tag	UNP P0DTC2
A	-26	PRO	-	expression tag	UNP P0DTC2
A	-25	SER	-	expression tag	UNP P0DTC2
A	-24	PRO	-	expression tag	UNP P0DTC2
A	-23	GLY	-	expression tag	UNP P0DTC2
A	-22	MET	-	expression tag	UNP P0DTC2
A	-21	PRO	-	expression tag	UNP P0DTC2
A	-20	ALA	-	expression tag	UNP P0DTC2
A	-19	LEU	-	expression tag	UNP P0DTC2
A	-18	LEU	-	expression tag	UNP P0DTC2
A	-17	SER	-	expression tag	UNP P0DTC2
A	-16	LEU	-	expression tag	UNP P0DTC2
A	-15	VAL	-	expression tag	UNP P0DTC2
A	-14	SER	-	expression tag	UNP P0DTC2
A	-13	LEU	-	expression tag	UNP P0DTC2
A	-12	LEU	-	expression tag	UNP P0DTC2
A	-11	SER	-	expression tag	UNP P0DTC2
A	-10	VAL	-	expression tag	UNP P0DTC2
A	-9	LEU	-	expression tag	UNP P0DTC2
A	-8	LEU	-	expression tag	UNP P0DTC2
A	-7	MET	-	expression tag	UNP P0DTC2

*Continued on next page...*

*Continued from previous page...*

Chain	Residue	Modelled	Actual	Comment	Reference
A	-6	GLY	-	expression tag	UNP P0DTC2
A	-5	CYS	-	expression tag	UNP P0DTC2
A	-4	VAL	-	expression tag	UNP P0DTC2
A	-3	ALA	-	expression tag	UNP P0DTC2
A	-2	GLU	-	expression tag	UNP P0DTC2
A	-1	THR	-	expression tag	UNP P0DTC2
A	0	GLY	-	expression tag	UNP P0DTC2
A	986	PRO	LYS	conflict	UNP P0DTC2
A	987	PRO	VAL	conflict	UNP P0DTC2
A	1209	SER	-	expression tag	UNP P0DTC2
A	1210	GLY	-	expression tag	UNP P0DTC2
A	1211	ARG	-	expression tag	UNP P0DTC2
A	1212	GLU	-	expression tag	UNP P0DTC2
A	1213	ASN	-	expression tag	UNP P0DTC2
A	1214	LEU	-	expression tag	UNP P0DTC2
A	1215	TYR	-	expression tag	UNP P0DTC2
A	1216	PHE	-	expression tag	UNP P0DTC2
A	1217	GLN	-	expression tag	UNP P0DTC2
A	1218	GLY	-	expression tag	UNP P0DTC2
A	1219	GLY	-	expression tag	UNP P0DTC2
A	1220	GLY	-	expression tag	UNP P0DTC2
A	1221	GLY	-	expression tag	UNP P0DTC2
A	1222	SER	-	expression tag	UNP P0DTC2
A	1223	GLY	-	expression tag	UNP P0DTC2
A	1224	TYR	-	expression tag	UNP P0DTC2
A	1225	ILE	-	expression tag	UNP P0DTC2
A	1226	PRO	-	expression tag	UNP P0DTC2
A	1227	GLU	-	expression tag	UNP P0DTC2
A	1228	ALA	-	expression tag	UNP P0DTC2
A	1229	PRO	-	expression tag	UNP P0DTC2
A	1230	ARG	-	expression tag	UNP P0DTC2
A	1231	ASP	-	expression tag	UNP P0DTC2
A	1232	GLY	-	expression tag	UNP P0DTC2
A	1233	GLN	-	expression tag	UNP P0DTC2
A	1234	ALA	-	expression tag	UNP P0DTC2
A	1235	TYR	-	expression tag	UNP P0DTC2
A	1236	VAL	-	expression tag	UNP P0DTC2
A	1237	ARG	-	expression tag	UNP P0DTC2
A	1238	LYS	-	expression tag	UNP P0DTC2
A	1239	ASP	-	expression tag	UNP P0DTC2
A	1240	GLY	-	expression tag	UNP P0DTC2
A	1241	GLU	-	expression tag	UNP P0DTC2

*Continued on next page...*

*Continued from previous page...*

Chain	Residue	Modelled	Actual	Comment	Reference
A	1242	TRP	-	expression tag	UNP P0DTC2
A	1243	VAL	-	expression tag	UNP P0DTC2
A	1244	LEU	-	expression tag	UNP P0DTC2
A	1245	LEU	-	expression tag	UNP P0DTC2
A	1246	SER	-	expression tag	UNP P0DTC2
A	1247	THR	-	expression tag	UNP P0DTC2
A	1248	PHE	-	expression tag	UNP P0DTC2
A	1249	LEU	-	expression tag	UNP P0DTC2
A	1250	GLY	-	expression tag	UNP P0DTC2
A	1251	HIS	-	expression tag	UNP P0DTC2
A	1252	HIS	-	expression tag	UNP P0DTC2
A	1253	HIS	-	expression tag	UNP P0DTC2
A	1254	HIS	-	expression tag	UNP P0DTC2
A	1255	HIS	-	expression tag	UNP P0DTC2
A	1256	HIS	-	expression tag	UNP P0DTC2
B	-30	MET	-	initiating methionine	UNP P0DTC2
B	-29	GLY	-	expression tag	UNP P0DTC2
B	-28	ILE	-	expression tag	UNP P0DTC2
B	-27	LEU	-	expression tag	UNP P0DTC2
B	-26	PRO	-	expression tag	UNP P0DTC2
B	-25	SER	-	expression tag	UNP P0DTC2
B	-24	PRO	-	expression tag	UNP P0DTC2
B	-23	GLY	-	expression tag	UNP P0DTC2
B	-22	MET	-	expression tag	UNP P0DTC2
B	-21	PRO	-	expression tag	UNP P0DTC2
B	-20	ALA	-	expression tag	UNP P0DTC2
B	-19	LEU	-	expression tag	UNP P0DTC2
B	-18	LEU	-	expression tag	UNP P0DTC2
B	-17	SER	-	expression tag	UNP P0DTC2
B	-16	LEU	-	expression tag	UNP P0DTC2
B	-15	VAL	-	expression tag	UNP P0DTC2
B	-14	SER	-	expression tag	UNP P0DTC2
B	-13	LEU	-	expression tag	UNP P0DTC2
B	-12	LEU	-	expression tag	UNP P0DTC2
B	-11	SER	-	expression tag	UNP P0DTC2
B	-10	VAL	-	expression tag	UNP P0DTC2
B	-9	LEU	-	expression tag	UNP P0DTC2
B	-8	LEU	-	expression tag	UNP P0DTC2
B	-7	MET	-	expression tag	UNP P0DTC2
B	-6	GLY	-	expression tag	UNP P0DTC2
B	-5	CYS	-	expression tag	UNP P0DTC2
B	-4	VAL	-	expression tag	UNP P0DTC2

*Continued on next page...*

*Continued from previous page...*

Chain	Residue	Modelled	Actual	Comment	Reference
B	-3	ALA	-	expression tag	UNP P0DTC2
B	-2	GLU	-	expression tag	UNP P0DTC2
B	-1	THR	-	expression tag	UNP P0DTC2
B	0	GLY	-	expression tag	UNP P0DTC2
B	986	PRO	LYS	conflict	UNP P0DTC2
B	987	PRO	VAL	conflict	UNP P0DTC2
B	1209	SER	-	expression tag	UNP P0DTC2
B	1210	GLY	-	expression tag	UNP P0DTC2
B	1211	ARG	-	expression tag	UNP P0DTC2
B	1212	GLU	-	expression tag	UNP P0DTC2
B	1213	ASN	-	expression tag	UNP P0DTC2
B	1214	LEU	-	expression tag	UNP P0DTC2
B	1215	TYR	-	expression tag	UNP P0DTC2
B	1216	PHE	-	expression tag	UNP P0DTC2
B	1217	GLN	-	expression tag	UNP P0DTC2
B	1218	GLY	-	expression tag	UNP P0DTC2
B	1219	GLY	-	expression tag	UNP P0DTC2
B	1220	GLY	-	expression tag	UNP P0DTC2
B	1221	GLY	-	expression tag	UNP P0DTC2
B	1222	SER	-	expression tag	UNP P0DTC2
B	1223	GLY	-	expression tag	UNP P0DTC2
B	1224	TYR	-	expression tag	UNP P0DTC2
B	1225	ILE	-	expression tag	UNP P0DTC2
B	1226	PRO	-	expression tag	UNP P0DTC2
B	1227	GLU	-	expression tag	UNP P0DTC2
B	1228	ALA	-	expression tag	UNP P0DTC2
B	1229	PRO	-	expression tag	UNP P0DTC2
B	1230	ARG	-	expression tag	UNP P0DTC2
B	1231	ASP	-	expression tag	UNP P0DTC2
B	1232	GLY	-	expression tag	UNP P0DTC2
B	1233	GLN	-	expression tag	UNP P0DTC2
B	1234	ALA	-	expression tag	UNP P0DTC2
B	1235	TYR	-	expression tag	UNP P0DTC2
B	1236	VAL	-	expression tag	UNP P0DTC2
B	1237	ARG	-	expression tag	UNP P0DTC2
B	1238	LYS	-	expression tag	UNP P0DTC2
B	1239	ASP	-	expression tag	UNP P0DTC2
B	1240	GLY	-	expression tag	UNP P0DTC2
B	1241	GLU	-	expression tag	UNP P0DTC2
B	1242	TRP	-	expression tag	UNP P0DTC2
B	1243	VAL	-	expression tag	UNP P0DTC2
B	1244	LEU	-	expression tag	UNP P0DTC2

*Continued on next page...*

*Continued from previous page...*

Chain	Residue	Modelled	Actual	Comment	Reference
B	1245	LEU	-	expression tag	UNP P0DTC2
B	1246	SER	-	expression tag	UNP P0DTC2
B	1247	THR	-	expression tag	UNP P0DTC2
B	1248	PHE	-	expression tag	UNP P0DTC2
B	1249	LEU	-	expression tag	UNP P0DTC2
B	1250	GLY	-	expression tag	UNP P0DTC2
B	1251	HIS	-	expression tag	UNP P0DTC2
B	1252	HIS	-	expression tag	UNP P0DTC2
B	1253	HIS	-	expression tag	UNP P0DTC2
B	1254	HIS	-	expression tag	UNP P0DTC2
B	1255	HIS	-	expression tag	UNP P0DTC2
B	1256	HIS	-	expression tag	UNP P0DTC2
C	-30	MET	-	initiating methionine	UNP P0DTC2
C	-29	GLY	-	expression tag	UNP P0DTC2
C	-28	ILE	-	expression tag	UNP P0DTC2
C	-27	LEU	-	expression tag	UNP P0DTC2
C	-26	PRO	-	expression tag	UNP P0DTC2
C	-25	SER	-	expression tag	UNP P0DTC2
C	-24	PRO	-	expression tag	UNP P0DTC2
C	-23	GLY	-	expression tag	UNP P0DTC2
C	-22	MET	-	expression tag	UNP P0DTC2
C	-21	PRO	-	expression tag	UNP P0DTC2
C	-20	ALA	-	expression tag	UNP P0DTC2
C	-19	LEU	-	expression tag	UNP P0DTC2
C	-18	LEU	-	expression tag	UNP P0DTC2
C	-17	SER	-	expression tag	UNP P0DTC2
C	-16	LEU	-	expression tag	UNP P0DTC2
C	-15	VAL	-	expression tag	UNP P0DTC2
C	-14	SER	-	expression tag	UNP P0DTC2
C	-13	LEU	-	expression tag	UNP P0DTC2
C	-12	LEU	-	expression tag	UNP P0DTC2
C	-11	SER	-	expression tag	UNP P0DTC2
C	-10	VAL	-	expression tag	UNP P0DTC2
C	-9	LEU	-	expression tag	UNP P0DTC2
C	-8	LEU	-	expression tag	UNP P0DTC2
C	-7	MET	-	expression tag	UNP P0DTC2
C	-6	GLY	-	expression tag	UNP P0DTC2
C	-5	CYS	-	expression tag	UNP P0DTC2
C	-4	VAL	-	expression tag	UNP P0DTC2
C	-3	ALA	-	expression tag	UNP P0DTC2
C	-2	GLU	-	expression tag	UNP P0DTC2
C	-1	THR	-	expression tag	UNP P0DTC2

*Continued on next page...*

*Continued from previous page...*

Chain	Residue	Modelled	Actual	Comment	Reference
C	0	GLY	-	expression tag	UNP P0DTC2
C	986	PRO	LYS	conflict	UNP P0DTC2
C	987	PRO	VAL	conflict	UNP P0DTC2
C	1209	SER	-	expression tag	UNP P0DTC2
C	1210	GLY	-	expression tag	UNP P0DTC2
C	1211	ARG	-	expression tag	UNP P0DTC2
C	1212	GLU	-	expression tag	UNP P0DTC2
C	1213	ASN	-	expression tag	UNP P0DTC2
C	1214	LEU	-	expression tag	UNP P0DTC2
C	1215	TYR	-	expression tag	UNP P0DTC2
C	1216	PHE	-	expression tag	UNP P0DTC2
C	1217	GLN	-	expression tag	UNP P0DTC2
C	1218	GLY	-	expression tag	UNP P0DTC2
C	1219	GLY	-	expression tag	UNP P0DTC2
C	1220	GLY	-	expression tag	UNP P0DTC2
C	1221	GLY	-	expression tag	UNP P0DTC2
C	1222	SER	-	expression tag	UNP P0DTC2
C	1223	GLY	-	expression tag	UNP P0DTC2
C	1224	TYR	-	expression tag	UNP P0DTC2
C	1225	ILE	-	expression tag	UNP P0DTC2
C	1226	PRO	-	expression tag	UNP P0DTC2
C	1227	GLU	-	expression tag	UNP P0DTC2
C	1228	ALA	-	expression tag	UNP P0DTC2
C	1229	PRO	-	expression tag	UNP P0DTC2
C	1230	ARG	-	expression tag	UNP P0DTC2
C	1231	ASP	-	expression tag	UNP P0DTC2
C	1232	GLY	-	expression tag	UNP P0DTC2
C	1233	GLN	-	expression tag	UNP P0DTC2
C	1234	ALA	-	expression tag	UNP P0DTC2
C	1235	TYR	-	expression tag	UNP P0DTC2
C	1236	VAL	-	expression tag	UNP P0DTC2
C	1237	ARG	-	expression tag	UNP P0DTC2
C	1238	LYS	-	expression tag	UNP P0DTC2
C	1239	ASP	-	expression tag	UNP P0DTC2
C	1240	GLY	-	expression tag	UNP P0DTC2
C	1241	GLU	-	expression tag	UNP P0DTC2
C	1242	TRP	-	expression tag	UNP P0DTC2
C	1243	VAL	-	expression tag	UNP P0DTC2
C	1244	LEU	-	expression tag	UNP P0DTC2
C	1245	LEU	-	expression tag	UNP P0DTC2
C	1246	SER	-	expression tag	UNP P0DTC2
C	1247	THR	-	expression tag	UNP P0DTC2

*Continued on next page...*

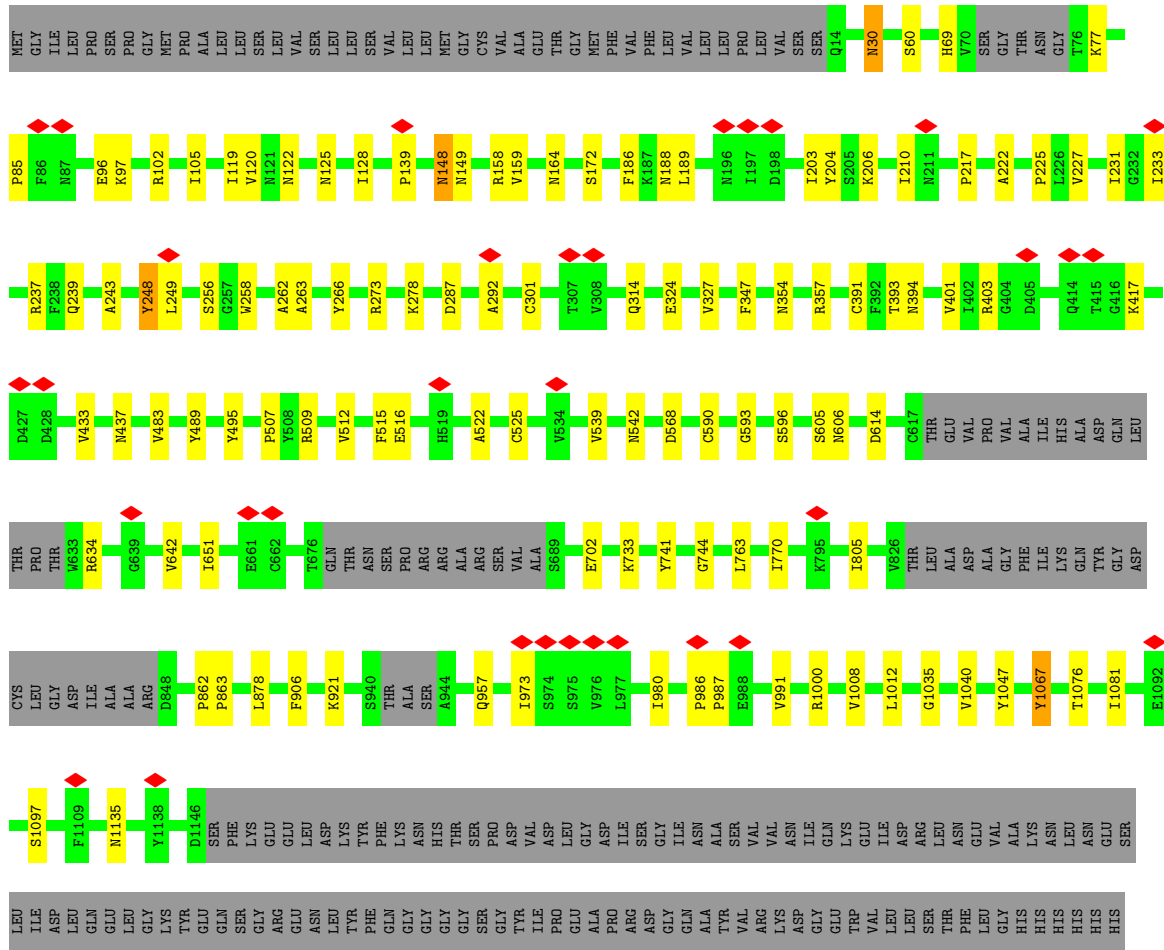
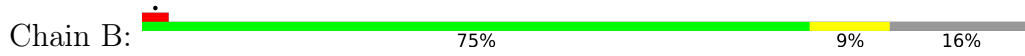


*Continued from previous page...*

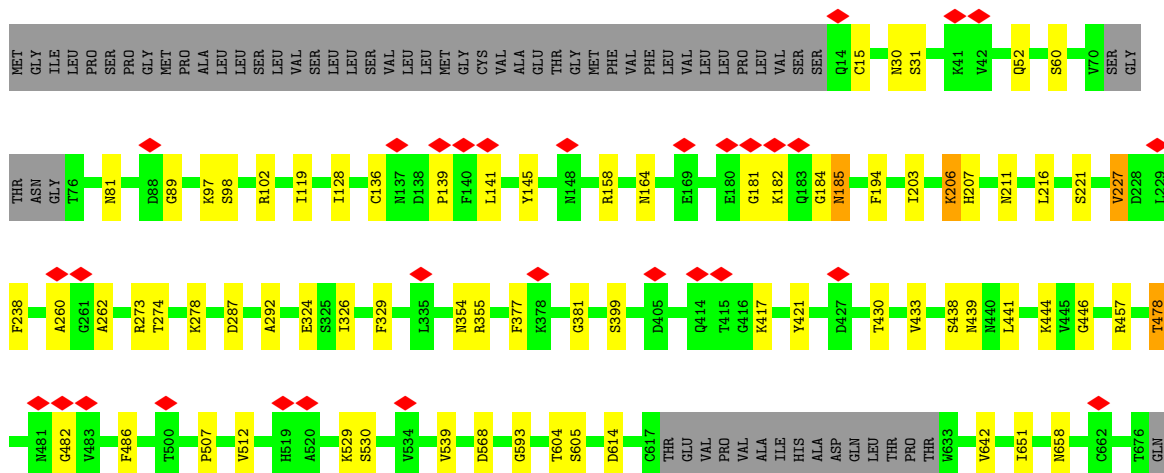
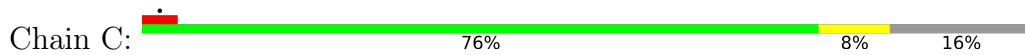
<b>Chain</b>	<b>Residue</b>	<b>Modelled</b>	<b>Actual</b>	<b>Comment</b>	<b>Reference</b>
C	1248	PHE	-	expression tag	UNP P0DTC2
C	1249	LEU	-	expression tag	UNP P0DTC2
C	1250	GLY	-	expression tag	UNP P0DTC2
C	1251	HIS	-	expression tag	UNP P0DTC2
C	1252	HIS	-	expression tag	UNP P0DTC2
C	1253	HIS	-	expression tag	UNP P0DTC2
C	1254	HIS	-	expression tag	UNP P0DTC2
C	1255	HIS	-	expression tag	UNP P0DTC2
C	1256	HIS	-	expression tag	UNP P0DTC2

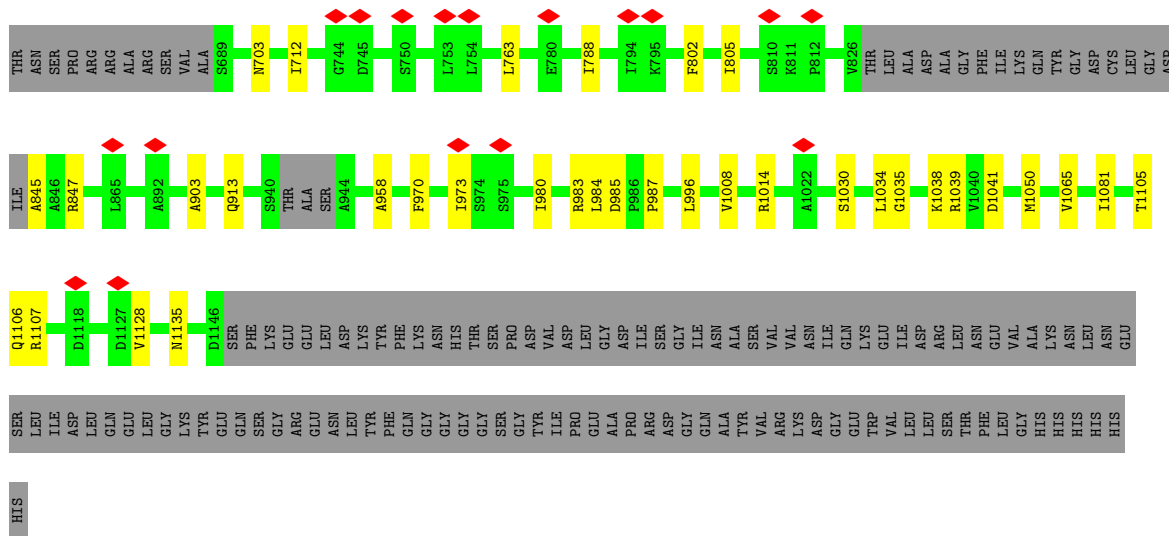


• Molecule 1: Spike glycoprotein



• Molecule 1: Spike glycoprotein





## 4 Experimental information

Property	Value	Source
EM reconstruction method	SINGLE PARTICLE	Depositor
Imposed symmetry	POINT, C1	Depositor
Number of particles used	107000	Depositor
Resolution determination method	FSC 0.143 CUT-OFF	Depositor
CTF correction method	PHASE FLIPPING AND AMPLITUDE CORRECTION	Depositor
Microscope	FEI TITAN KRIOS	Depositor
Voltage (kV)	300	Depositor
Electron dose ( $e^-/\text{\AA}^2$ )	54.4	Depositor
Minimum defocus (nm)	1500	Depositor
Maximum defocus (nm)	3000	Depositor
Magnification	Not provided	
Image detector	GATAN K2 QUANTUM (4k x 4k)	Depositor
Maximum map value	0.024	Depositor
Minimum map value	-0.007	Depositor
Average map value	0.000	Depositor
Map value standard deviation	0.001	Depositor
Recommended contour level	0.007	Depositor
Map size ( $\text{\AA}$ )	431.19998, 431.19998, 431.19998	wwPDB
Map dimensions	400, 400, 400	wwPDB
Map angles ( $^\circ$ )	90.0, 90.0, 90.0	wwPDB
Pixel spacing ( $\text{\AA}$ )	1.078, 1.078, 1.078	Depositor

## 5 Model quality (i)

### 5.1 Standard geometry (i)

The Z score for a bond length (or angle) is the number of standard deviations the observed value is removed from the expected value. A bond length (or angle) with  $|Z| > 5$  is considered an outlier worth inspection. RMSZ is the root-mean-square of all Z scores of the bond lengths (or angles).

Mol	Chain	Bond lengths		Bond angles	
		RMSZ	# Z  >5	RMSZ	# Z  >5
1	A	0.24	0/6980	0.40	0/9495
1	B	0.24	0/8631	0.40	0/11745
1	C	0.24	0/8652	0.40	0/11773
All	All	0.24	0/24263	0.40	0/33013

There are no bond length outliers.

There are no bond angle outliers.

There are no chirality outliers.

There are no planarity outliers.

### 5.2 Too-close contacts (i)

In the following table, the Non-H and H(model) columns list the number of non-hydrogen atoms and hydrogen atoms in the chain respectively. The H(added) column lists the number of hydrogen atoms added and optimized by MolProbity. The Clashes column lists the number of clashes within the asymmetric unit, whereas Symm-Clashes lists symmetry-related clashes.

Mol	Chain	Non-H	H(model)	H(added)	Clashes	Symm-Clashes
1	A	6831	0	6696	49	0
1	B	8434	0	8221	55	0
1	C	8455	0	8244	53	0
All	All	23720	0	23161	151	0

The all-atom clashscore is defined as the number of clashes found per 1000 atoms (including hydrogen atoms). The all-atom clashscore for this structure is 3.

All (151) close contacts within the same asymmetric unit are listed below, sorted by their clash magnitude.

Atom-1	Atom-2	Interatomic distance (Å)	Clash overlap (Å)
1:B:139:PRO:HA	1:B:158:ARG:O	1.61	1.00

*Continued on next page...*

*Continued from previous page...*

Atom-1	Atom-2	Interatomic distance (Å)	Clash overlap (Å)
1:A:139:PRO:HA	1:A:158:ARG:O	1.72	0.89
1:C:139:PRO:HA	1:C:158:ARG:O	1.84	0.78
1:B:593:GLY:HA2	1:B:614:ASP:HB2	1.78	0.64
1:B:105:ILE:HD11	1:B:239:GLN:HE21	1.62	0.64
1:C:763:LEU:HD22	1:C:1008:VAL:HG21	1.81	0.62
1:A:97:LYS:HB3	1:A:186:PHE:HA	1.83	0.61
1:A:310:LYS:HA	1:A:599:THR:O	2.01	0.61
1:B:763:LEU:HD22	1:B:1008:VAL:HG21	1.83	0.60
1:B:119:ILE:HG23	1:B:128:ILE:HG12	1.83	0.59
1:C:97:LYS:HE3	1:C:262:ALA:HB1	1.84	0.59
1:C:593:GLY:HA2	1:C:614:ASP:HB2	1.83	0.59
1:C:278:LYS:HB3	1:C:287:ASP:HB3	1.85	0.58
1:C:642:VAL:HG22	1:C:651:ILE:HG12	1.85	0.58
1:C:604:THR:OG1	1:C:605:SER:N	2.37	0.58
1:A:101:ILE:HG13	1:A:242:LEU:HD22	1.84	0.58
1:C:184:GLY:O	1:C:185:ASN:ND2	2.37	0.58
1:C:354:ASN:HD22	1:C:399:SER:HB2	1.68	0.58
1:C:1105:THR:OG1	1:C:1106:GLN:N	2.38	0.57
1:B:1076:THR:HB	1:B:1097:SER:HB3	1.86	0.57
1:A:143:VAL:HA	1:A:154:GLU:HA	1.85	0.57
1:A:907:ASN:HD21	1:A:913:GLN:HE21	1.54	0.55
1:A:278:LYS:HB3	1:A:287:ASP:HB2	1.88	0.55
1:A:742:ILE:O	1:A:1000:ARG:NH1	2.40	0.55
1:B:590:CYS:O	1:B:634:ARG:NH2	2.36	0.55
1:C:1030:SER:HA	1:C:1034:LEU:HD12	1.87	0.55
1:C:438:SER:HB2	1:C:441:LEU:HB2	1.89	0.55
1:A:185:ASN:OD1	1:A:211:ASN:ND2	2.41	0.54
1:C:203:ILE:HB	1:C:227:VAL:HG12	1.88	0.54
1:B:30:ASN:ND2	1:B:60:SER:O	2.39	0.54
1:A:143:VAL:HG21	1:A:179:LEU:HD22	1.90	0.54
1:C:102:ARG:HG3	1:C:141:LEU:HD12	1.91	0.53
1:C:985:ASP:N	1:C:985:ASP:OD1	2.42	0.53
1:A:276:LEU:HD22	1:A:301:CYS:HA	1.92	0.52
1:A:985:ASP:OD1	1:A:985:ASP:N	2.43	0.52
1:B:119:ILE:HG12	1:B:128:ILE:HG23	1.90	0.52
1:B:97:LYS:HB3	1:B:186:PHE:HA	1.91	0.52
1:B:148:ASN:ND2	1:B:149:ASN:OD1	2.43	0.52
1:A:139:PRO:HB2	1:A:241:LEU:HD21	1.90	0.52
1:A:30:ASN:ND2	1:A:60:SER:O	2.43	0.52
1:B:1040:VAL:HG21	1:C:1035:GLY:HA3	1.92	0.52
1:B:973:ILE:HD11	1:B:980:ILE:HG23	1.93	0.51

*Continued on next page...*

*Continued from previous page...*

Atom-1	Atom-2	Interatomic distance (Å)	Clash overlap (Å)
1:C:324:GLU:H	1:C:539:VAL:HG12	1.75	0.51
1:C:845:ALA:O	1:C:847:ARG:N	2.39	0.51
1:A:203:ILE:HB	1:A:227:VAL:HG12	1.93	0.51
1:B:97:LYS:HE2	1:B:262:ALA:HB3	1.93	0.51
1:A:1111:GLU:OE1	1:A:1113:GLN:NE2	2.43	0.51
1:B:393:THR:HB	1:B:516:GLU:HB2	1.93	0.51
1:C:30:ASN:ND2	1:C:60:SER:O	2.44	0.51
1:A:1030:SER:HB3	1:C:1041:ASP:HB2	1.93	0.50
1:B:741:TYR:O	1:B:1000:ARG:NH1	2.45	0.50
1:C:206:LYS:HE3	1:C:221:SER:HB3	1.92	0.50
1:C:433:VAL:HG22	1:C:512:VAL:HG22	1.92	0.50
1:C:985:ASP:HB2	1:C:987:PRO:HD2	1.94	0.50
1:C:478:THR:OG1	1:C:486:PHE:O	2.30	0.50
1:A:81:ASN:N	1:A:81:ASN:OD1	2.45	0.50
1:C:273:ARG:NH2	1:C:292:ALA:O	2.44	0.50
1:B:403:ARG:HH21	1:B:495:TYR:HD2	1.60	0.49
1:A:733:LYS:HE3	1:A:771:ALA:HB1	1.93	0.49
1:A:15:CYS:SG	1:A:161:SER:OG	2.71	0.49
1:C:973:ILE:HD11	1:C:980:ILE:HG23	1.93	0.49
1:A:590:CYS:O	1:A:634:ARG:NH2	2.42	0.49
1:C:802:PHE:HD2	1:C:805:ILE:HD11	1.76	0.49
1:B:324:GLU:H	1:B:539:VAL:HG12	1.78	0.49
1:A:319:ARG:NH1	1:B:744:GLY:O	2.46	0.48
1:B:102:ARG:HG2	1:B:243:ALA:HB2	1.95	0.48
1:B:393:THR:HG23	1:B:522:ALA:HB2	1.95	0.48
1:C:98:SER:OG	1:C:182:LYS:O	2.32	0.48
1:C:703:ASN:OD1	1:C:703:ASN:N	2.45	0.48
1:A:805:ILE:HD12	1:A:878:LEU:HD21	1.96	0.48
1:A:37:TYR:H	1:A:55:PHE:HE1	1.61	0.47
1:C:119:ILE:HG12	1:C:128:ILE:HG23	1.96	0.47
1:A:15:CYS:HB3	1:A:136:CYS:HB3	1.73	0.46
1:A:102:ARG:HH21	1:A:122:ASN:HA	1.80	0.46
1:C:444:LYS:HG3	1:C:446:GLY:H	1.80	0.46
1:B:231:ILE:HB	1:B:233:ILE:HG12	1.97	0.46
1:A:1031:GLU:OE2	1:C:1039:ARG:NH1	2.48	0.46
1:C:970:PHE:HD1	1:C:996:LEU:HD23	1.81	0.46
1:B:125:ASN:ND2	1:B:172:SER:O	2.49	0.46
1:B:433:VAL:HG22	1:B:512:VAL:HG22	1.96	0.46
1:A:970:PHE:HD1	1:A:996:LEU:HD23	1.81	0.46
1:A:100:ILE:HD13	1:A:263:ALA:HB2	1.97	0.46
1:B:77:LYS:NZ	1:B:256:SER:O	2.43	0.46

*Continued on next page...*



*Continued from previous page...*

Atom-1	Atom-2	Interatomic distance (Å)	Clash overlap (Å)
1:C:98:SER:HB3	1:C:181:GLY:HA2	1.98	0.46
1:C:903:ALA:HB1	1:C:913:GLN:HG2	1.97	0.46
1:A:119:ILE:HG23	1:A:128:ILE:HG12	1.98	0.46
1:A:770:ILE:HD11	1:A:1012:LEU:HG	1.97	0.46
1:B:206:LYS:NZ	1:B:222:ALA:O	2.49	0.46
1:C:421:TYR:HA	1:C:457:ARG:HH21	1.81	0.46
1:B:189:LEU:HB2	1:B:210:ILE:HD13	1.98	0.45
1:B:357:ARG:HH12	1:B:394:ASN:HD22	1.64	0.45
1:B:605:SER:OG	1:B:606:ASN:N	2.50	0.45
1:B:437:ASN:ND2	1:B:507:PRO:O	2.49	0.45
1:B:805:ILE:HD12	1:B:878:LEU:HD11	1.98	0.45
1:A:751:ASN:O	1:A:755:GLN:NE2	2.48	0.45
1:B:401:VAL:HG22	1:B:509:ARG:HG2	1.99	0.45
1:B:568:ASP:N	1:B:568:ASP:OD1	2.48	0.45
1:B:273:ARG:NH2	1:B:292:ALA:O	2.49	0.45
1:B:189:LEU:HD22	1:B:217:PRO:HG2	1.99	0.45
1:A:825:LYS:HB2	1:A:945:LEU:HD12	1.99	0.45
1:A:593:GLY:HA2	1:A:614:ASP:HB2	1.98	0.45
1:B:1081:ILE:HG23	1:B:1135:ASN:HB3	1.99	0.45
1:C:439:ASN:HA	1:C:507:PRO:HD2	1.99	0.44
1:C:568:ASP:N	1:C:568:ASP:OD1	2.51	0.44
1:B:986:PRO:N	1:B:987:PRO:HD2	2.32	0.44
1:C:15:CYS:HB3	1:C:136:CYS:HB3	1.71	0.44
1:C:381:GLY:HA3	1:C:430:THR:HG23	1.99	0.44
1:B:278:LYS:HB3	1:B:287:ASP:HB3	2.00	0.44
1:A:145:TYR:HB3	1:A:247:SER:HA	2.00	0.44
1:A:1040:VAL:HG21	1:B:1035:GLY:HA3	2.00	0.44
1:A:958:ALA:HB2	1:A:1014:ARG:HH12	1.83	0.44
1:A:148:ASN:OD1	1:A:148:ASN:N	2.51	0.43
1:A:324:GLU:H	1:A:539:VAL:HG12	1.83	0.43
1:A:568:ASP:OD1	1:A:568:ASP:N	2.51	0.43
1:B:203:ILE:HB	1:B:227:VAL:HG12	2.00	0.43
1:C:89:GLY:HA2	1:C:194:PHE:O	2.18	0.43
1:B:1047:TYR:HB2	1:B:1067:TYR:HD1	1.84	0.43
1:B:642:VAL:HG22	1:B:651:ILE:HG12	2.01	0.43
1:C:529:LYS:HB3	1:C:530:SER:H	1.70	0.43
1:C:1081:ILE:HG23	1:C:1135:ASN:HB3	2.01	0.43
1:A:327:VAL:HG22	1:A:542:ASN:HB3	2.01	0.43
1:C:983:ARG:HG3	1:C:984:LEU:HG	2.01	0.43
1:C:1050:MET:HG3	1:C:1065:VAL:HG21	2.01	0.43
1:B:391:CYS:HA	1:B:525:CYS:HA	2.01	0.42

*Continued on next page...*

Continued from previous page...

Atom-1	Atom-2	Interatomic distance (Å)	Clash overlap (Å)
1:C:326:ILE:H	1:C:326:ILE:HG13	1.72	0.42
1:A:789:TYR:H	1:A:876:ALA:HB1	1.84	0.42
1:A:77:LYS:HE3	1:A:259:THR:HA	2.01	0.42
1:A:731:MET:HB2	1:A:732:THR:H	1.69	0.42
1:B:69:HIS:NE2	1:B:258:TRP:O	2.53	0.42
1:C:81:ASN:N	1:C:81:ASN:OD1	2.52	0.42
1:B:248:TYR:HD1	1:B:249:LEU:HG	1.85	0.42
1:A:28:TYR:HB3	1:A:61:ASN:HD21	1.85	0.42
1:C:31:SER:HA	1:C:216:LEU:HD13	2.03	0.41
1:A:862:PRO:HA	1:A:863:PRO:HD3	1.92	0.41
1:B:85:PRO:HA	1:B:237:ARG:HG2	2.02	0.41
1:B:327:VAL:HG13	1:B:542:ASN:HB3	2.03	0.41
1:B:702:GLU:HA	1:C:788:ILE:HB	2.03	0.41
1:C:958:ALA:HB2	1:C:1014:ARG:HH12	1.85	0.41
1:A:314:GLN:NE2	1:A:596:SER:OG	2.53	0.41
1:A:1108:ASN:HD22	1:A:1108:ASN:HA	1.70	0.41
1:B:733:LYS:HB2	1:B:733:LYS:HE3	1.88	0.41
1:C:712:ILE:HD12	1:C:712:ILE:HA	1.88	0.41
1:C:185:ASN:HD21	1:C:211:ASN:ND2	2.19	0.41
1:A:205:SER:HB3	1:A:226:LEU:HD22	2.02	0.40
1:B:770:ILE:HD11	1:B:1012:LEU:HG	2.03	0.40
1:B:139:PRO:HB3	1:B:159:VAL:HA	2.02	0.40
1:B:314:GLN:NE2	1:B:596:SER:OG	2.52	0.40
1:C:52:GLN:NE2	1:C:274:THR:OG1	2.54	0.40
1:B:96:GLU:HG2	1:B:263:ALA:HB1	2.03	0.40
1:B:204:TYR:HD2	1:B:225:PRO:HA	1.86	0.40
1:B:862:PRO:HA	1:B:863:PRO:HD3	1.94	0.40

There are no symmetry-related clashes.

## 5.3 Torsion angles [i](#)

### 5.3.1 Protein backbone [i](#)

In the following table, the Percentiles column shows the percent Ramachandran outliers of the chain as a percentile score with respect to all PDB entries followed by that with respect to all EM entries.

The Analysed column shows the number of residues for which the backbone conformation was analysed, and the total number of residues.

Mol	Chain	Analysed	Favoured	Allowed	Outliers	Percentiles	
1	A	861/1287 (67%)	775 (90%)	85 (10%)	1 (0%)	51	86
1	B	1065/1287 (83%)	945 (89%)	117 (11%)	3 (0%)	41	77
1	C	1068/1287 (83%)	943 (88%)	120 (11%)	5 (0%)	29	69
All	All	2994/3861 (78%)	2663 (89%)	322 (11%)	9 (0%)	44	77

All (9) Ramachandran outliers are listed below:

Mol	Chain	Res	Type
1	A	1079	PRO
1	B	164	ASN
1	C	260	ALA
1	C	482	GLY
1	C	478	THR
1	B	122	ASN
1	C	164	ASN
1	C	1128	VAL
1	B	483	VAL

### 5.3.2 Protein sidechains [i](#)

In the following table, the Percentiles column shows the percent sidechain outliers of the chain as a percentile score with respect to all PDB entries followed by that with respect to all EM entries.

The Analysed column shows the number of residues for which the sidechain conformation was analysed, and the total number of residues.

Mol	Chain	Analysed	Rotameric	Outliers	Percentiles	
1	A	767/1116 (69%)	760 (99%)	7 (1%)	78	87
1	B	942/1116 (84%)	925 (98%)	17 (2%)	59	77
1	C	943/1116 (84%)	930 (99%)	13 (1%)	67	80
All	All	2652/3348 (79%)	2615 (99%)	37 (1%)	68	80

All (37) residues with a non-rotameric sidechain are listed below:

Mol	Chain	Res	Type
1	A	211	ASN
1	A	281	GLU
1	A	599	THR
1	A	644	GLN

*Continued on next page...*

*Continued from previous page...*

Mol	Chain	Res	Type
1	A	738	CYS
1	A	935	GLN
1	A	995	ARG
1	B	30	ASN
1	B	120	VAL
1	B	148	ASN
1	B	188	ASN
1	B	248	TYR
1	B	266	TYR
1	B	301	CYS
1	B	347	PHE
1	B	354	ASN
1	B	417	LYS
1	B	489	TYR
1	B	515	PHE
1	B	906	PHE
1	B	921	LYS
1	B	957	GLN
1	B	991	VAL
1	B	1067	TYR
1	C	145	TYR
1	C	185	ASN
1	C	206	LYS
1	C	207	HIS
1	C	227	VAL
1	C	238	PHE
1	C	329	PHE
1	C	355	ARG
1	C	377	PHE
1	C	417	LYS
1	C	658	ASN
1	C	1038	LYS
1	C	1107	ARG

Sometimes sidechains can be flipped to improve hydrogen bonding and reduce clashes. All (62) such sidechains are listed below:

Mol	Chain	Res	Type
1	A	30	ASN
1	A	61	ASN
1	A	69	HIS
1	A	87	ASN
1	A	164	ASN

*Continued on next page...*

*Continued from previous page...*

<b>Mol</b>	<b>Chain</b>	<b>Res</b>	<b>Type</b>
1	A	183	GLN
1	A	185	ASN
1	A	211	ASN
1	A	218	GLN
1	A	314	GLN
1	A	607	GLN
1	A	751	ASN
1	A	784	GLN
1	A	787	GLN
1	A	824	ASN
1	A	856	ASN
1	A	907	ASN
1	A	925	ASN
1	A	1054	GLN
1	A	1074	ASN
1	A	1108	ASN
1	A	1119	ASN
1	B	23	GLN
1	B	30	ASN
1	B	122	ASN
1	B	137	ASN
1	B	148	ASN
1	B	188	ASN
1	B	239	GLN
1	B	314	GLN
1	B	343	ASN
1	B	354	ASN
1	B	394	ASN
1	B	437	ASN
1	B	540	ASN
1	B	709	ASN
1	B	914	ASN
1	B	953	ASN
1	B	969	ASN
1	B	992	GLN
1	B	1010	GLN
1	B	1011	GLN
1	C	52	GLN
1	C	211	ASN
1	C	218	GLN
1	C	314	GLN
1	C	354	ASN

*Continued on next page...*

*Continued from previous page...*

Mol	Chain	Res	Type
1	C	394	ASN
1	C	448	ASN
1	C	450	ASN
1	C	606	ASN
1	C	616	ASN
1	C	658	ASN
1	C	675	GLN
1	C	717	ASN
1	C	751	ASN
1	C	762	GLN
1	C	913	GLN
1	C	935	GLN
1	C	955	ASN
1	C	969	ASN
1	C	1064	HIS

### 5.3.3 RNA [i](#)

There are no RNA molecules in this entry.

### 5.4 Non-standard residues in protein, DNA, RNA chains [i](#)

There are no non-standard protein/DNA/RNA residues in this entry.

### 5.5 Carbohydrates [i](#)

There are no monosaccharides in this entry.

### 5.6 Ligand geometry [i](#)

There are no ligands in this entry.

### 5.7 Other polymers [i](#)

There are no such residues in this entry.

### 5.8 Polymer linkage issues [i](#)

There are no chain breaks in this entry.

## 6 Map visualisation [i](#)

This section contains visualisations of the EMDB entry EMD-11206. These allow visual inspection of the internal detail of the map and identification of artifacts.

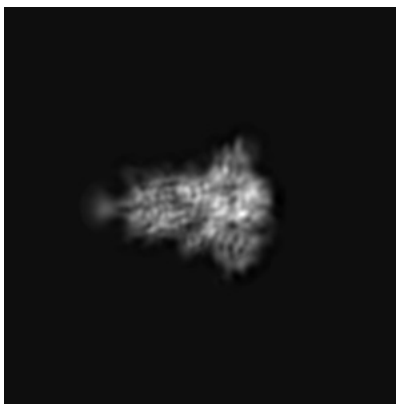
Images derived from a raw map, generated by summing the deposited half-maps, are presented below the corresponding image components of the primary map to allow further visual inspection and comparison with those of the primary map.

### 6.1 Orthogonal projections [i](#)

#### 6.1.1 Primary map



X

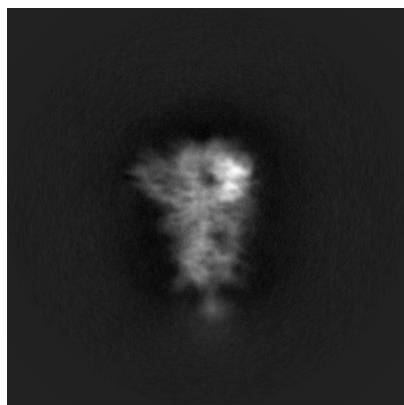


Y

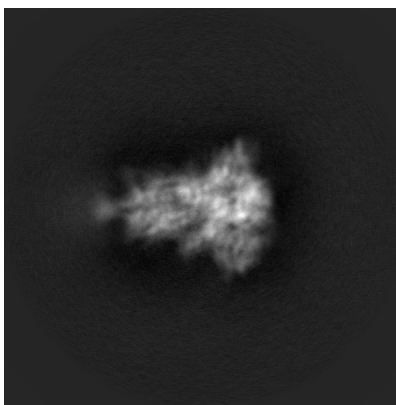


Z

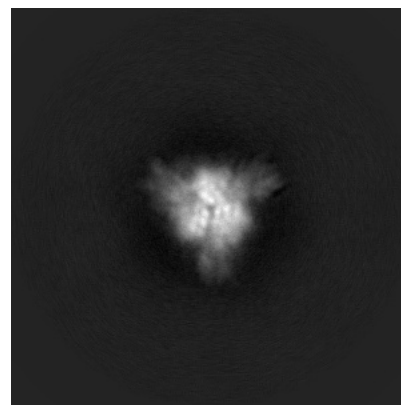
#### 6.1.2 Raw map



X



Y



Z

The images above show the map projected in three orthogonal directions.

## 6.2 Central slices [i](#)

### 6.2.1 Primary map



X Index: 200

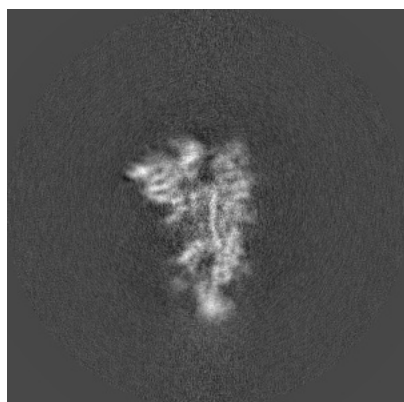


Y Index: 200

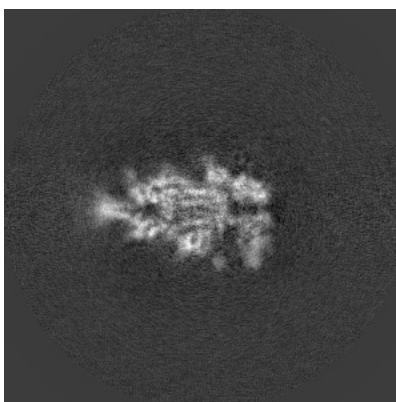


Z Index: 200

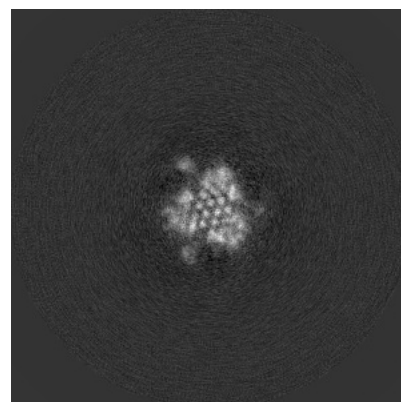
### 6.2.2 Raw map



X Index: 200



Y Index: 200



Z Index: 200

The images above show central slices of the map in three orthogonal directions.



## 6.3 Largest variance slices [i](#)

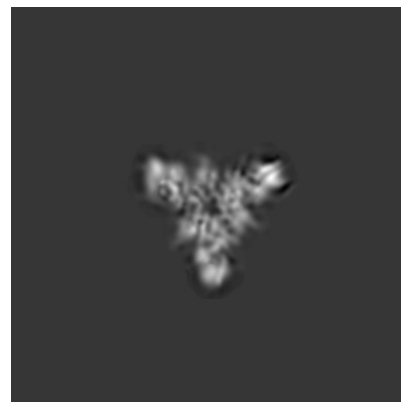
### 6.3.1 Primary map



X Index: 193

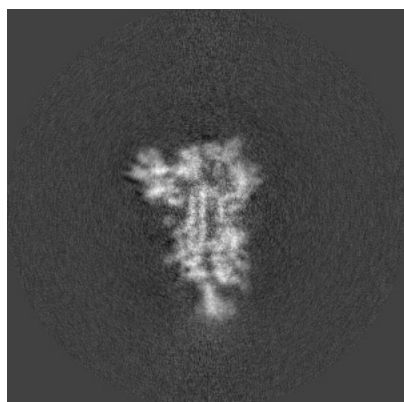


Y Index: 221

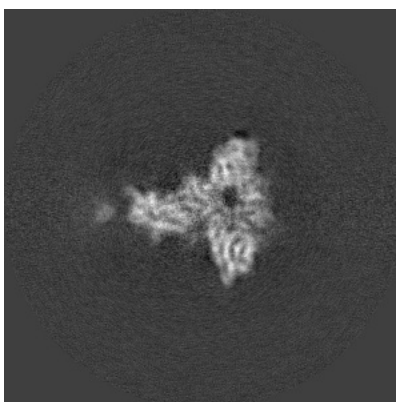


Z Index: 235

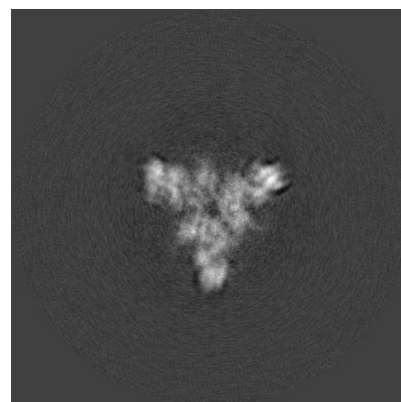
### 6.3.2 Raw map



X Index: 193



Y Index: 221

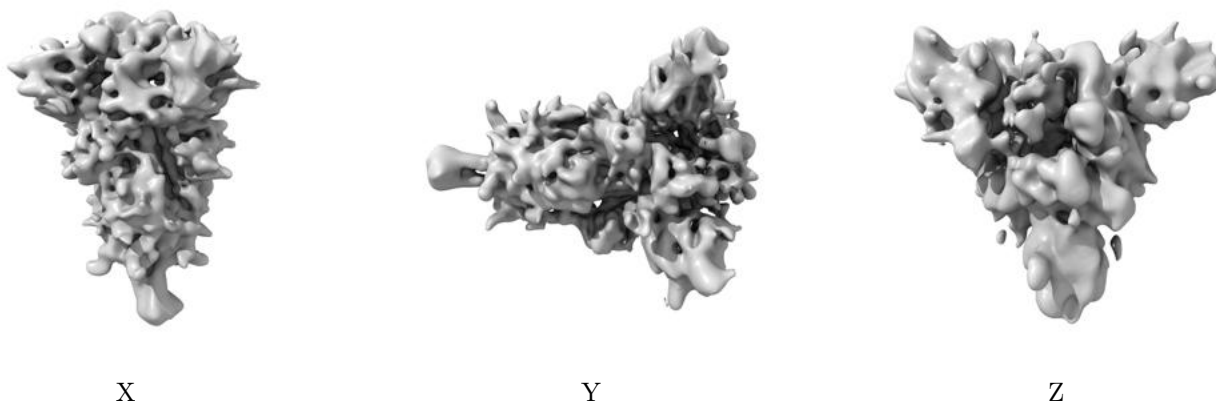


Z Index: 235

The images above show the largest variance slices of the map in three orthogonal directions.

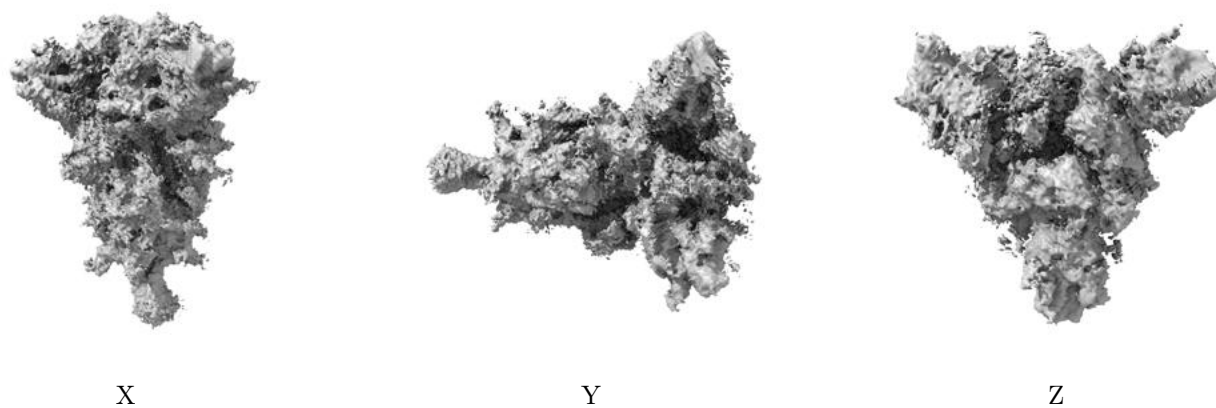
## 6.4 Orthogonal surface views [i](#)

### 6.4.1 Primary map



The images above show the 3D surface view of the map at the recommended contour level 0.007. These images, in conjunction with the slice images, may facilitate assessment of whether an appropriate contour level has been provided.

### 6.4.2 Raw map



These images show the 3D surface of the raw map. The raw map's contour level was selected so that its surface encloses the same volume as the primary map does at its recommended contour level.

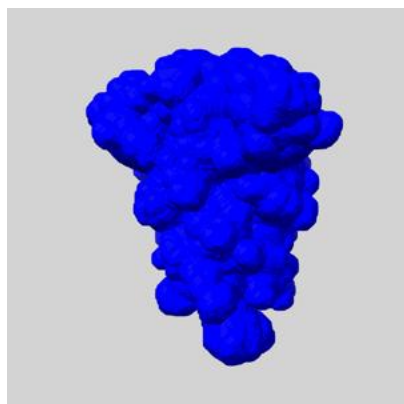
## 6.5 Mask visualisation [i](#)

This section shows the 3D surface view of the primary map at 50% transparency overlaid with the specified mask at 0% transparency

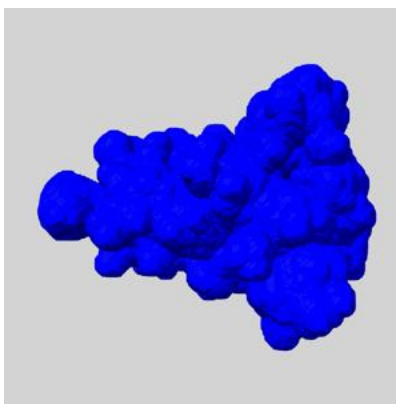
A mask typically either:

- Encompasses the whole structure
- Separates out a domain, a functional unit, a monomer or an area of interest from a larger structure

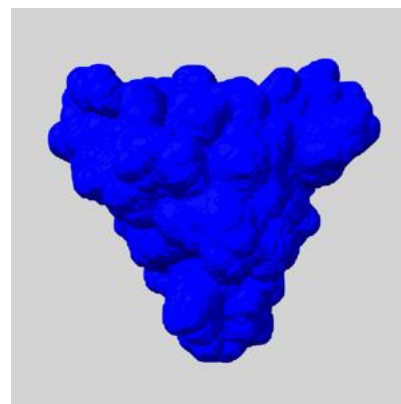
### 6.5.1 emd\_11206\_msk\_1.map [i](#)



X



Y

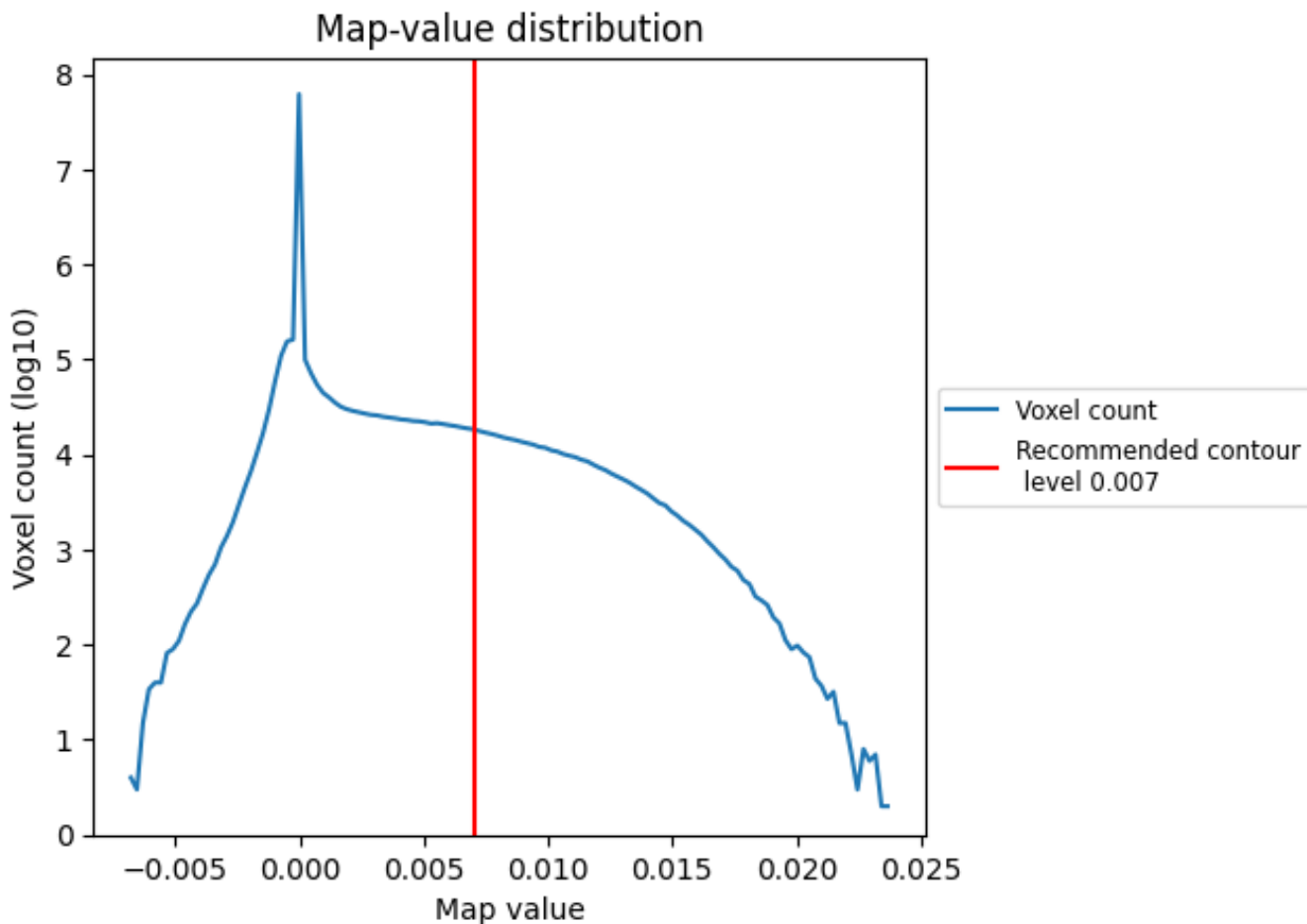


Z

## 7 Map analysis [i](#)

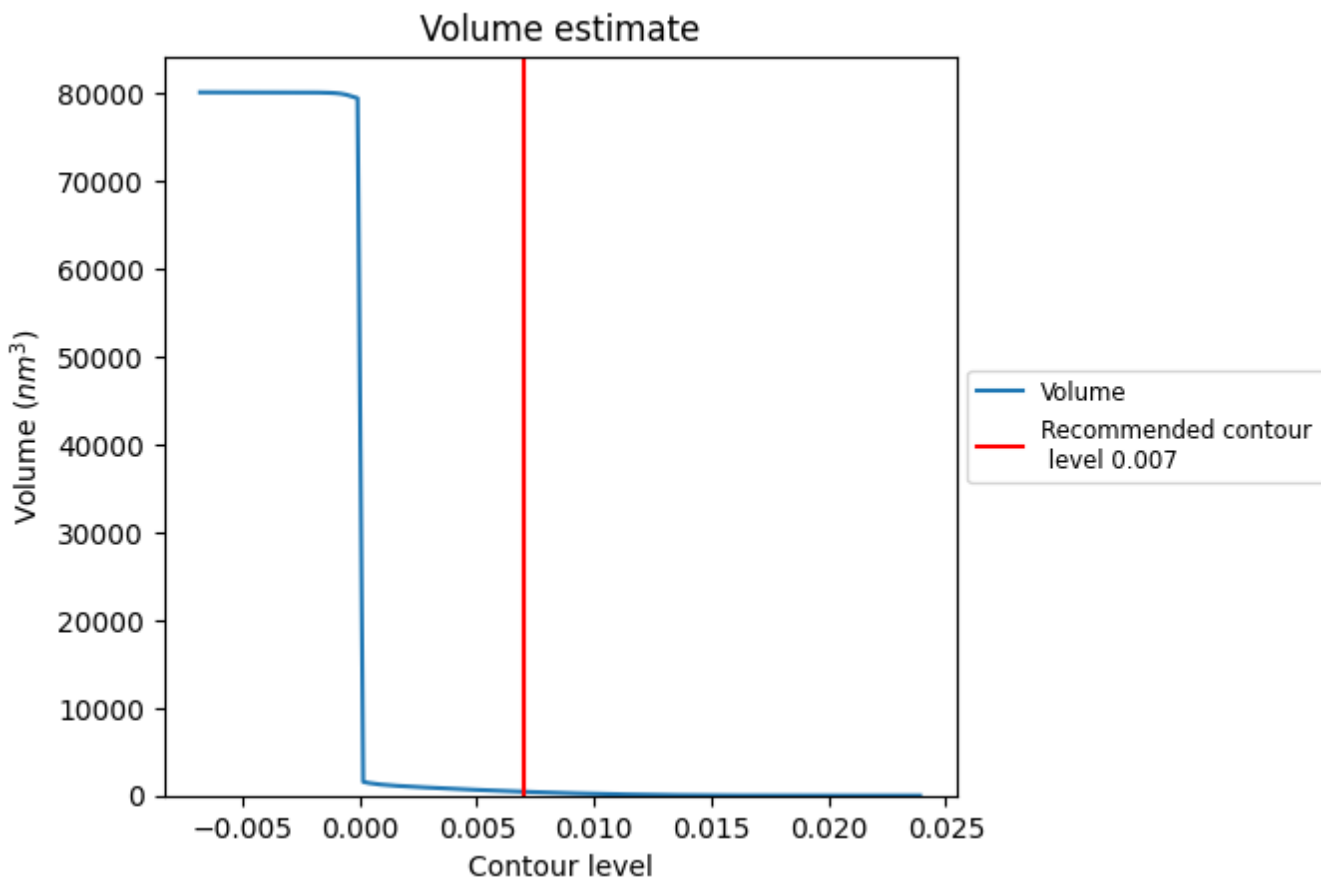
This section contains the results of statistical analysis of the map.

### 7.1 Map-value distribution [i](#)



The map-value distribution is plotted in 128 intervals along the x-axis. The y-axis is logarithmic. A spike in this graph at zero usually indicates that the volume has been masked.

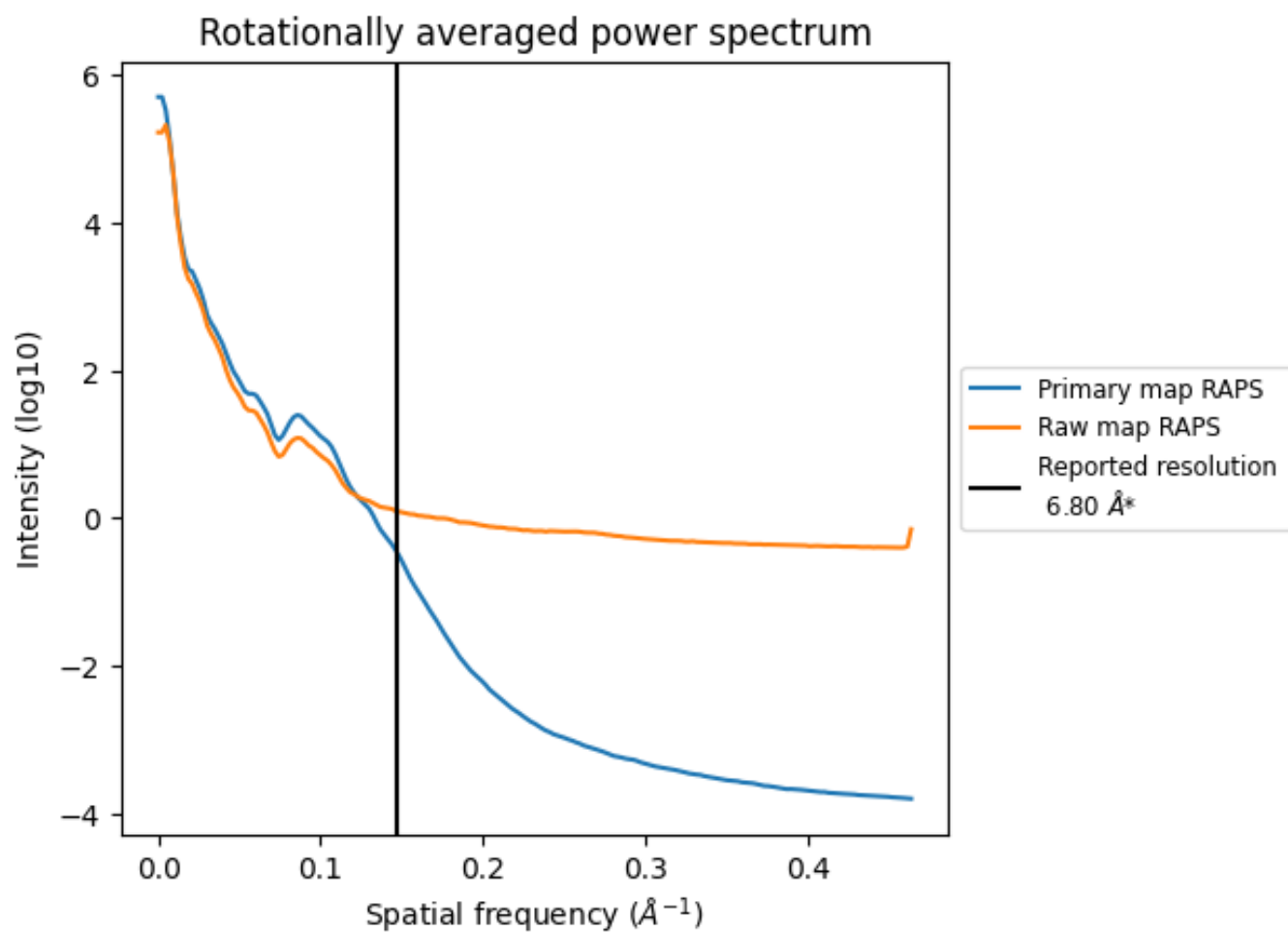
## 7.2 Volume estimate [i](#)



The volume at the recommended contour level is 436 nm<sup>3</sup>; this corresponds to an approximate mass of 394 kDa.

The volume estimate graph shows how the enclosed volume varies with the contour level. The recommended contour level is shown as a vertical line and the intersection between the line and the curve gives the volume of the enclosed surface at the given level.

### 7.3 Rotationally averaged power spectrum [i](#)

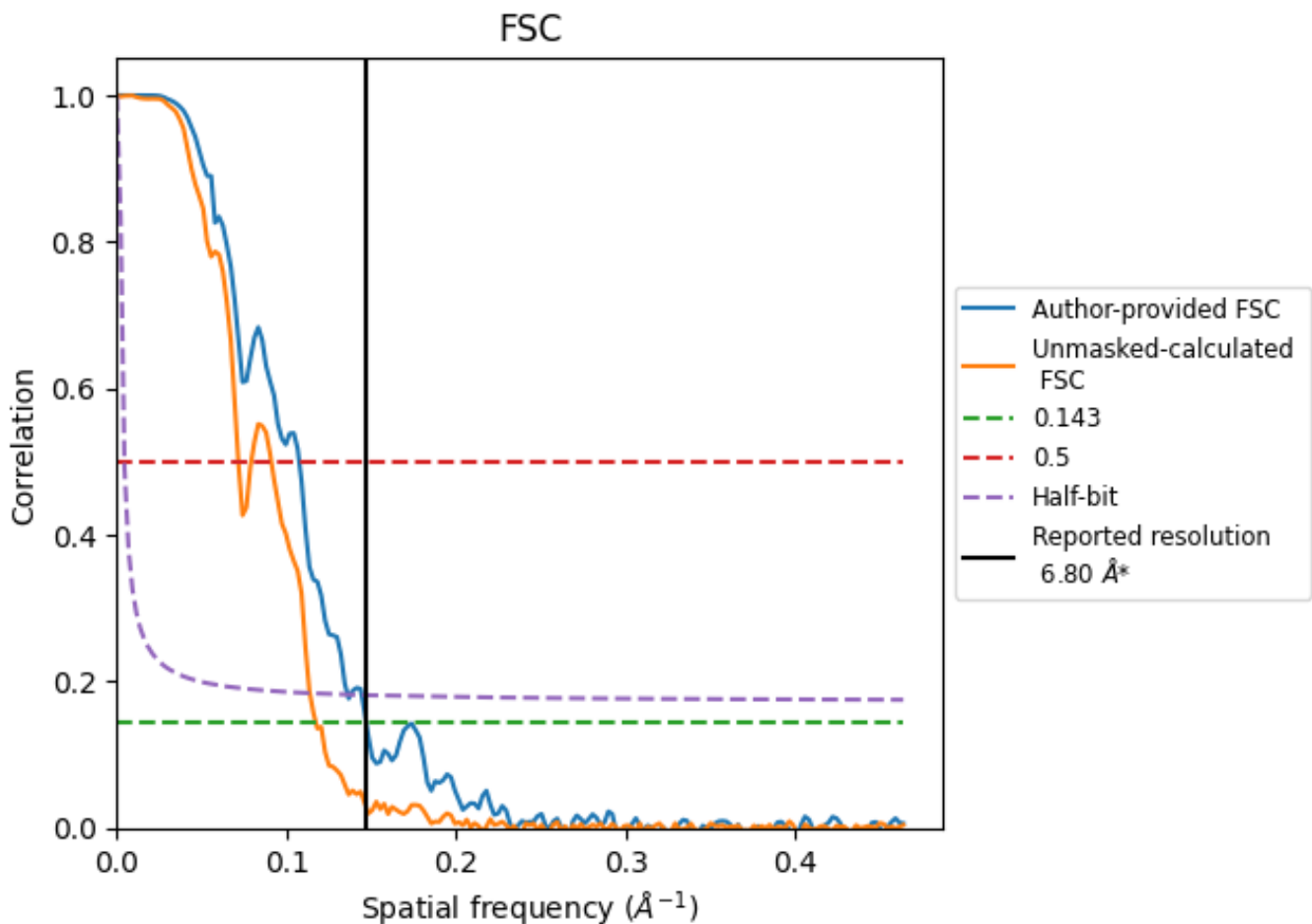


\*Reported resolution corresponds to spatial frequency of 0.147 Å<sup>-1</sup>

## 8 Fourier-Shell correlation [i](#)

Fourier-Shell Correlation (FSC) is the most commonly used method to estimate the resolution of single-particle and subtomogram-averaged maps. The shape of the curve depends on the imposed symmetry, mask and whether or not the two 3D reconstructions used were processed from a common reference. The reported resolution is shown as a black line. A curve is displayed for the half-bit criterion in addition to lines showing the 0.143 gold standard cut-off and 0.5 cut-off.

### 8.1 FSC [i](#)



\*Reported resolution corresponds to spatial frequency of  $0.147 \text{\AA}^{-1}$

## 8.2 Resolution estimates [i](#)

Resolution estimate (Å)	Estimation criterion (FSC cut-off)		
	0.143	0.5	Half-bit
Reported by author	6.80	-	-
Author-provided FSC curve	6.79	9.29	7.34
Unmasked-calculated*	8.52	13.95	8.78

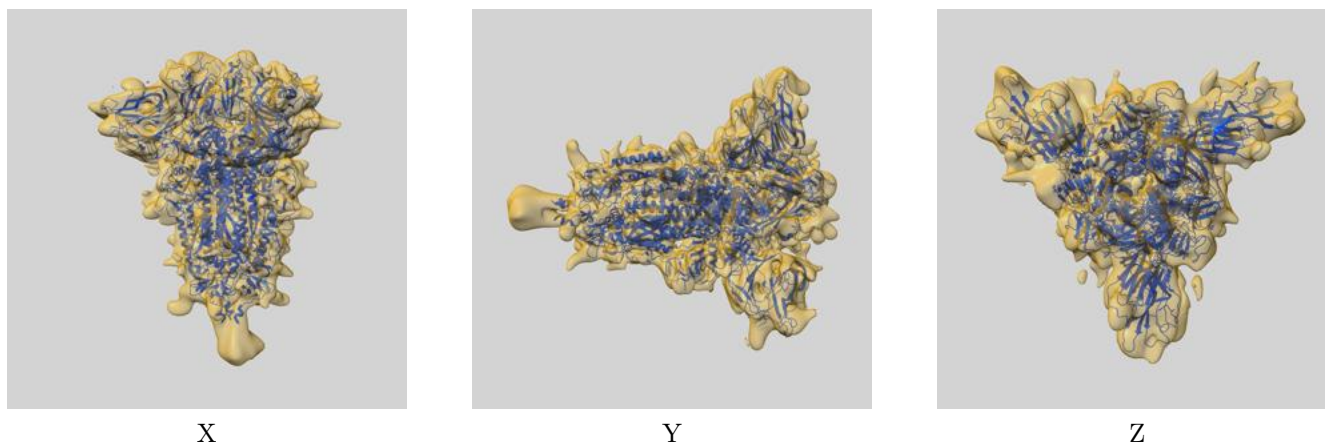
\*Resolution estimate based on FSC curve calculated by comparison of deposited half-maps. The value from deposited half-maps intersecting FSC 0.143 CUT-OFF 8.52 differs from the reported value 6.8 by more than 10 %



## 9 Map-model fit [i](#)

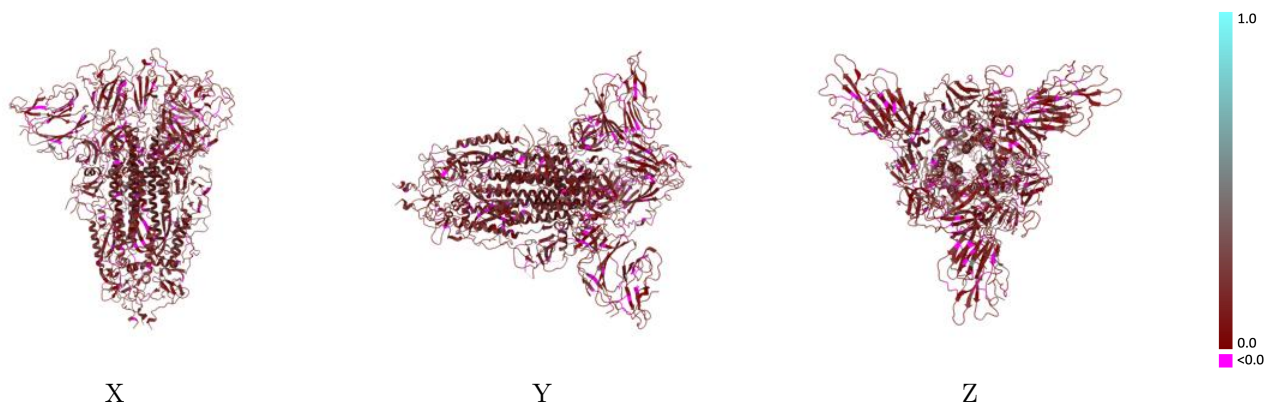
This section contains information regarding the fit between EMDB map EMD-11206 and PDB model 6ZGH. Per-residue inclusion information can be found in section 3 on page 10.

### 9.1 Map-model overlay [i](#)



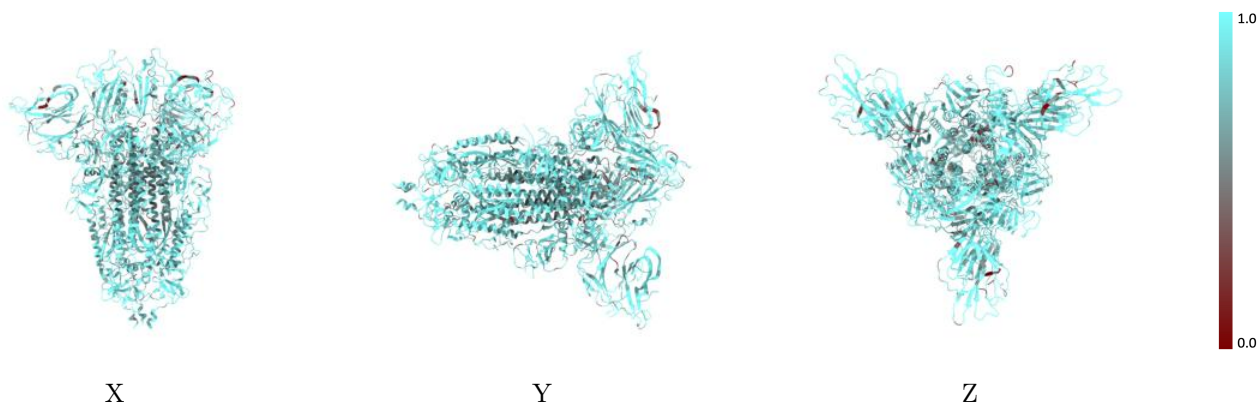
The images above show the 3D surface view of the map at the recommended contour level 0.007 at 50% transparency in yellow overlaid with a ribbon representation of the model coloured in blue. These images allow for the visual assessment of the quality of fit between the atomic model and the map.

## 9.2 Q-score mapped to coordinate model [i](#)



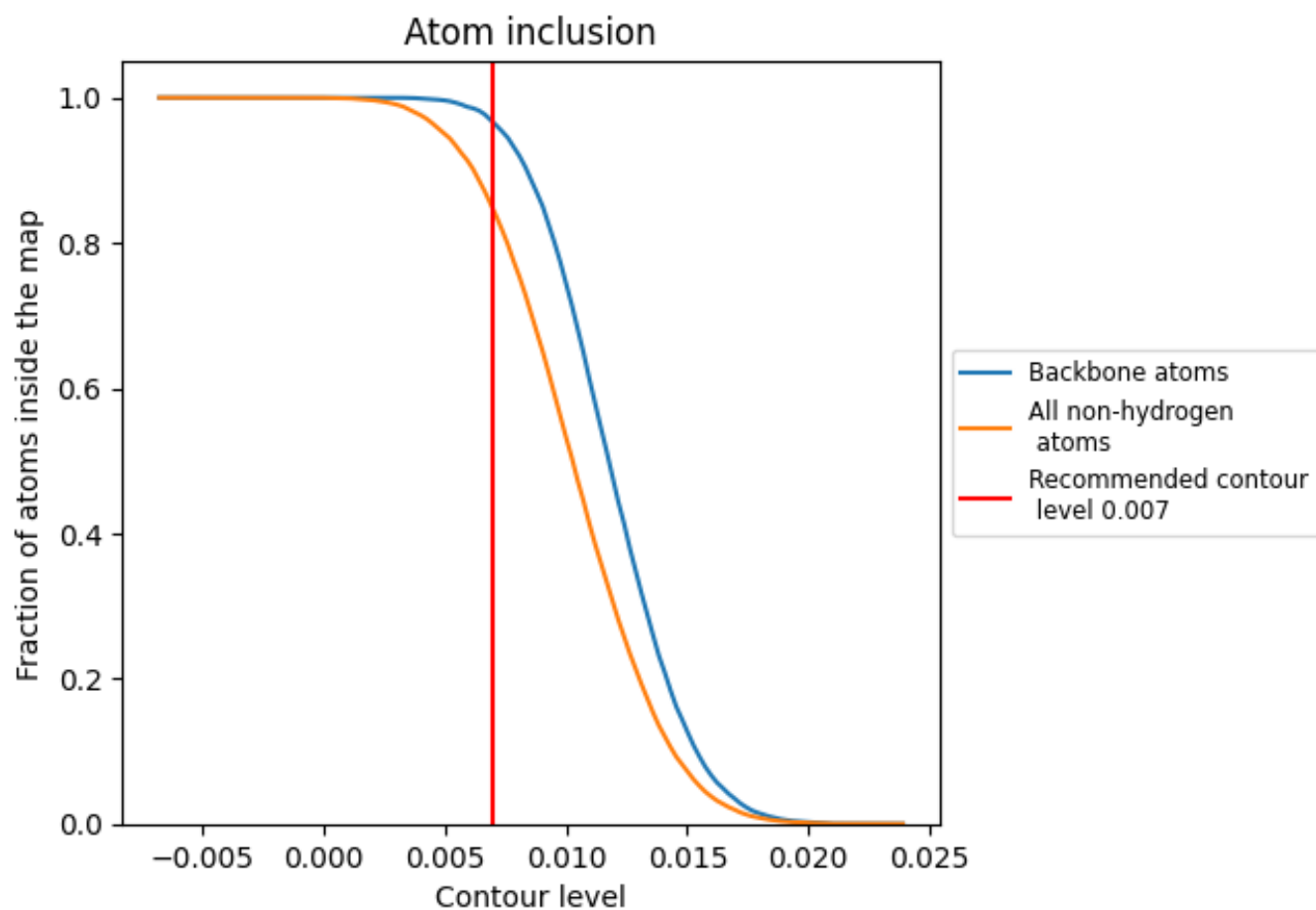
The images above show the model with each residue coloured according to its Q-score. This shows their resolvability in the map with higher Q-score values reflecting better resolvability. Please note: Q-score is calculating the resolvability of atoms, and thus high values are only expected at resolutions at which atoms can be resolved. Low Q-score values may therefore be expected for many entries.

## 9.3 Atom inclusion mapped to coordinate model [i](#)



The images above show the model with each residue coloured according to its atom inclusion. This shows to what extent they are inside the map at the recommended contour level (0.007).









## 9.4 Atom inclusion [i](#)



At the recommended contour level, 97% of all backbone atoms, 85% of all non-hydrogen atoms, are inside the map.

## 9.5 Map-model fit summary

The table lists the average atom inclusion at the recommended contour level (0.007) and Q-score for the entire model and for each chain.

Chain	Atom inclusion	Q-score
All	 0.8455	 0.1510
A	 0.8523	 0.1560
B	 0.8475	 0.1470
C	 0.8379	 0.1500

