



Full wwPDB NMR Structure Validation Report ⓘ

May 29, 2020 – 01:33 pm BST

PDB ID : 5ZGG
Title : NMR structure of p75NTR transmembrane domain in complex with NSC49652
Authors : Lin, Z.; Ibanez, C.
Deposited on : 2018-03-08

This is a Full wwPDB NMR Structure Validation Report for a publicly released PDB entry.

We welcome your comments at validation@mail.wwpdb.org

A user guide is available at

<https://www.wwpdb.org/validation/2017/NMRValidationReportHelp>

with specific help available everywhere you see the ⓘ symbol.

The following versions of software and data (see [references ⓘ](#)) were used in the production of this report:

Cyrange : Kirchner and Güntert (2011)
NmrClust : Kelley et al. (1996)
MolProbity : 4.02b-467
Mogul : 1.8.5 (274361), CSD as541be (2020)
buster-report : 1.1.7 (2018)
Percentile statistics : 20191225.v01 (using entries in the PDB archive December 25th 2019)
RCI : v_1n_11_5_13_A (Berjanski et al., 2005)
PANAV : Wang et al. (2010)
ShiftChecker : 2.11
Ideal geometry (proteins) : Engh & Huber (2001)
Ideal geometry (DNA, RNA) : Parkinson et al. (1996)
Validation Pipeline (wwPDB-VP) : 2.11

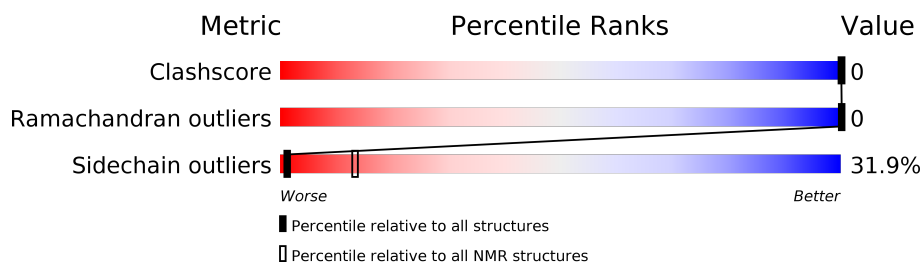
1 Overall quality at a glance

The following experimental techniques were used to determine the structure:

SOLUTION NMR

The overall completeness of chemical shifts assignment is 47%.

Percentile scores (ranging between 0-100) for global validation metrics of the entry are shown in the following graphic. The table shows the number of entries on which the scores are based.



Metric	Whole archive (#Entries)	NMR archive (#Entries)
Clashscore	158937	12864
Ramachandran outliers	154571	11451
Sidechain outliers	154315	11428

The table below summarises the geometric issues observed across the polymeric chains and their fit to the experimental data. The red, orange, yellow and green segments indicate the fraction of residues that contain outliers for ≥ 3 , 2, 1 and 0 types of geometric quality criteria. A cyan segment indicates the fraction of residues that are not part of the well-defined cores, and a grey segment represents the fraction of residues that are not modelled. The numeric value for each fraction is indicated below the corresponding segment, with a dot representing fractions $\leq 5\%$

Mol	Chain	Length	Quality of chain
1	A	34	
1	B	34	

2 Ensemble composition and analysis

This entry contains 10 models. Model 4 is the overall representative, medoid model (most similar to other models). The authors have identified model 1 as representative, based on the following criterion: *lowest energy*.

The following residues are included in the computation of the global validation metrics.

Well-defined (core) protein residues			
Well-defined core	Residue range (total)	Backbone RMSD (Å)	Medoid model
1	A:250-A:277 (28)	0.06	4
2	B:254-B:277 (24)	0.06	4

Ill-defined regions of proteins are excluded from the global statistics.

Ligands and non-protein polymers are included in the analysis.

NmrClust was unable to cluster the ensemble.

Error message: Failed to create NmrClust input

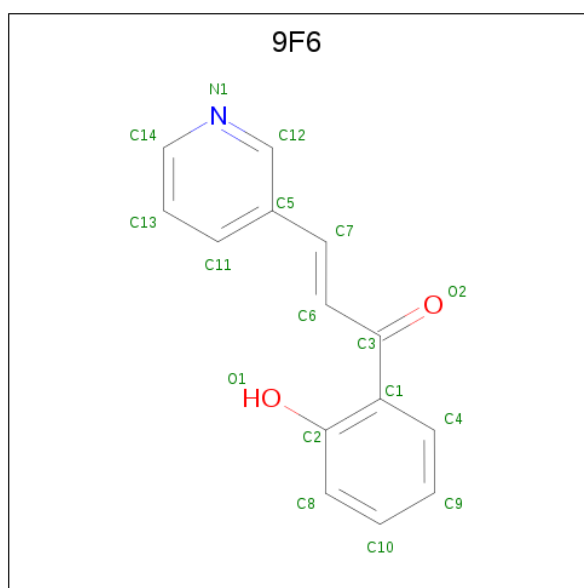
3 Entry composition [i](#)

There are 2 unique types of molecules in this entry. The entry contains 1089 atoms, of which 550 are hydrogens and 0 are deuteriums.

- Molecule 1 is a protein called Tumor necrosis factor receptor superfamily member 16.

Mol	Chain	Residues	Atoms					Trace	
			Total	C	H	N	O		S
1	A	34	531	171	270	44	45	1	0
1	B	34	531	171	270	44	45	1	0

- Molecule 2 is (2E)-1-(2-hydroxyphenyl)-3-(pyridin-3-yl)prop-2-en-1-one (three-letter code: 9F6) (formula: C₁₄H₁₁NO₂) (labeled as "Ligand of Interest" by author).



Mol	Chain	Residues	Atoms				
			Total	C	H	N	O
2	B	1	27	14	10	1	2

4 Residue-property plots [i](#)

4.1 Average score per residue in the NMR ensemble

These plots are provided for all protein, RNA and DNA chains in the entry. The first graphic is the same as shown in the summary in section 1 of this report. The second graphic shows the sequence where residues are colour-coded according to the number of geometric quality criteria for which they contain at least one outlier: green = 0, yellow = 1, orange = 2 and red = 3 or more. Stretches of 2 or more consecutive residues without any outliers are shown as green connectors. Residues which are classified as ill-defined in the NMR ensemble, are shown in cyan with an underline colour-coded according to the previous scheme. Residues which were present in the experimental sample, but not modelled in the final structure are shown in grey.

- Molecule 1: Tumor necrosis factor receptor superfamily member 16



- Molecule 1: Tumor necrosis factor receptor superfamily member 16



4.2 Scores per residue for each member of the ensemble

Colouring as in section 4.1 above.

4.2.1 Score per residue for model 1

- Molecule 1: Tumor necrosis factor receptor superfamily member 16



- Molecule 1: Tumor necrosis factor receptor superfamily member 16



4.2.2 Score per residue for model 2

- Molecule 1: Tumor necrosis factor receptor superfamily member 16



- Molecule 1: Tumor necrosis factor receptor superfamily member 16

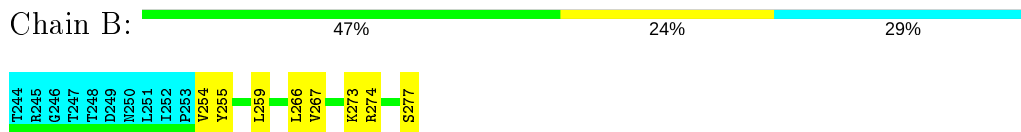


4.2.3 Score per residue for model 3

- Molecule 1: Tumor necrosis factor receptor superfamily member 16



- Molecule 1: Tumor necrosis factor receptor superfamily member 16



4.2.4 Score per residue for model 4 (medoid)

- Molecule 1: Tumor necrosis factor receptor superfamily member 16



- Molecule 1: Tumor necrosis factor receptor superfamily member 16



4.2.5 Score per residue for model 5

- Molecule 1: Tumor necrosis factor receptor superfamily member 16



- Molecule 1: Tumor necrosis factor receptor superfamily member 16

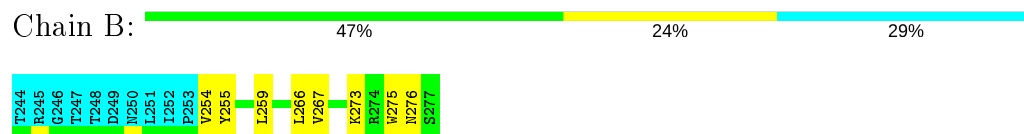


4.2.6 Score per residue for model 6

- Molecule 1: Tumor necrosis factor receptor superfamily member 16



- Molecule 1: Tumor necrosis factor receptor superfamily member 16



4.2.7 Score per residue for model 7

- Molecule 1: Tumor necrosis factor receptor superfamily member 16

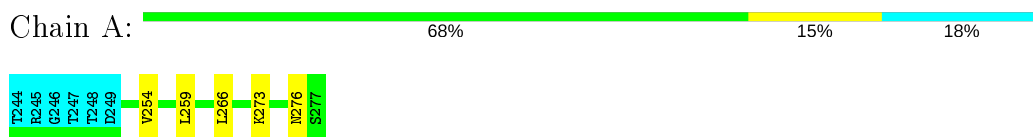


- Molecule 1: Tumor necrosis factor receptor superfamily member 16



4.2.8 Score per residue for model 8

- Molecule 1: Tumor necrosis factor receptor superfamily member 16



- Molecule 1: Tumor necrosis factor receptor superfamily member 16



4.2.9 Score per residue for model 9

- Molecule 1: Tumor necrosis factor receptor superfamily member 16



- Molecule 1: Tumor necrosis factor receptor superfamily member 16



4.2.10 Score per residue for model 10

- Molecule 1: Tumor necrosis factor receptor superfamily member 16



- Molecule 1: Tumor necrosis factor receptor superfamily member 16



5 Refinement protocol and experimental data overview

The models were refined using the following method: *molecular dynamics*.

Of the 100 calculated structures, 10 were deposited, based on the following criterion: *structures with the lowest energy*.

The following table shows the software used for structure solution, optimisation and refinement.

Software name	Classification	Version
CYANA	structure calculation	
Amber	refinement	

The following table shows chemical shift validation statistics as aggregates over all chemical shift files. Detailed validation can be found in section 7 of this report.

Chemical shift file(s)	input_cs.cif
Number of chemical shift lists	1
Total number of shifts	394
Number of shifts mapped to atoms	394
Number of unparsed shifts	0
Number of shifts with mapping errors	0
Number of shifts with mapping warnings	0
Assignment completeness (well-defined parts)	47%

No validations of the models with respect to experimental NMR restraints is performed at this time.

6 Model quality [i](#)

6.1 Standard geometry [i](#)

Bond lengths and bond angles in the following residue types are not validated in this section: 9F6

There are no covalent bond-length or bond-angle outliers.

There are no bond-length outliers.

There are no bond-angle outliers.

There are no chirality outliers.

There are no planarity outliers.

6.2 Too-close contacts [i](#)

In the following table, the Non-H and H(model) columns list the number of non-hydrogen atoms and hydrogen atoms in each chain respectively. The H(added) column lists the number of hydrogen atoms added and optimized by MolProbity. The Clashes column lists the number of clashes averaged over the ensemble.

Mol	Chain	Non-H	H(model)	H(added)	Clashes
All	All	4200	4350	4250	-

The all-atom clashscore is defined as the number of clashes found per 1000 atoms (including hydrogen atoms). The all-atom clashscore for this structure is -.

There are no clashes.

6.3 Torsion angles [i](#)

6.3.1 Protein backbone [i](#)

In the following table, the Percentiles column shows the percent Ramachandran outliers of the chain as a percentile score with respect to all PDB entries followed by that with respect to all NMR entries. The Analysed column shows the number of residues for which the backbone conformation was analysed and the total number of residues.

Mol	Chain	Analysed	Favoured	Allowed	Outliers	Percentiles	
1	A	27/34 (79%)	26±1 (97±3%)	1±1 (3±3%)	0±0 (0±0%)	100	100
1	B	23/34 (68%)	22±0 (97±2%)	1±0 (3±2%)	0±0 (0±0%)	100	100
All	All	500/680 (74%)	485 (97%)	15 (3%)	0 (0%)	100	100

There are no Ramachandran outliers.

6.3.2 Protein sidechains [i](#)

In the following table, the Percentiles column shows the percent sidechain outliers of the chain as a percentile score with respect to all PDB entries followed by that with respect to all NMR entries. The Analysed column shows the number of residues for which the sidechain conformation was analysed and the total number of residues.

Mol	Chain	Analysed	Rotameric	Outliers	Percentiles	
1	A	23/28 (82%)	17±1 (73±3%)	6±1 (27±3%)	2	21
1	B	19/28 (68%)	12±1 (62±4%)	7±1 (38±4%)	1	6
All	All	420/560 (75%)	286 (68%)	134 (32%)	1	13

All 20 unique residues with a non-rotameric sidechain are listed below. They are sorted by the frequency of occurrence in the ensemble.

Mol	Chain	Res	Type	Models (Total)
1	A	266	LEU	10
1	B	266	LEU	10
1	B	267	VAL	10
1	A	254	VAL	10
1	B	259	LEU	10
1	A	259	LEU	10
1	B	273	LYS	10
1	A	273	LYS	10
1	B	254	VAL	9
1	B	275	TRP	7
1	B	255	TYR	7
1	A	250	ASN	6
1	A	276	ASN	5
1	A	277	SER	5
1	A	274	ARG	4
1	B	277	SER	3
1	B	274	ARG	3
1	B	276	ASN	3
1	A	251	LEU	1
1	A	256	CYS	1

6.3.3 RNA [i](#)

There are no RNA molecules in this entry.

6.4 Non-standard residues in protein, DNA, RNA chains [i](#)

There are no non-standard protein/DNA/RNA residues in this entry.

6.5 Carbohydrates [i](#)

There are no carbohydrates in this entry.

LIGAND-GEOMETRY INFOmissingINFO

6.6 Other polymers [i](#)

There are no such molecules in this entry.

6.7 Polymer linkage issues [i](#)

There are no chain breaks in this entry.

7 Chemical shift validation [i](#)

The completeness of assignment taking into account all chemical shift lists is 47% for the well-defined parts and 42% for the entire structure.

7.1 Chemical shift list 1

File name: input_cs.cif

Chemical shift list name: 20180306_subm5_new.str

7.1.1 Bookkeeping [i](#)

The following table shows the results of parsing the chemical shift list and reports the number of nuclei with statistically unusual chemical shifts.

Total number of shifts	394
Number of shifts mapped to atoms	394
Number of unparsed shifts	0
Number of shifts with mapping errors	0
Number of shifts with mapping warnings	0
Number of shift outliers (ShiftChecker)	0

7.1.2 Chemical shift referencing [i](#)

The following table shows the suggested chemical shift referencing corrections.

Nucleus	# values	Correction \pm precision, ppm	Suggested action
$^{13}\text{C}_\alpha$	34	-0.44 ± 0.10	None needed (< 0.5 ppm)
$^{13}\text{C}_\beta$	32	0.84 ± 0.16	Should be applied
$^{13}\text{C}'$	0	—	None (insufficient data)
^{15}N	31	0.93 ± 0.41	Should be applied

7.1.3 Completeness of resonance assignments [i](#)

The following table shows the completeness of the chemical shift assignments for the well-defined regions of the structure. The overall completeness is 47%, i.e. 299 atoms were assigned a chemical shift out of a possible 632. 8 out of 15 assigned methyl groups (LEU and VAL) were assigned stereospecifically.

	Total	^1H	^{13}C	^{15}N
Backbone	106/258 (41%)	53/103 (51%)	28/104 (27%)	25/51 (49%)
Sidechain	156/300 (52%)	92/172 (53%)	61/117 (52%)	3/11 (27%)

Continued on next page...

Continued from previous page...

	Total	¹ H	¹³ C	¹⁵ N
Aromatic	37/74 (50%)	19/38 (50%)	17/34 (50%)	1/2 (50%)
Overall	299/632 (47%)	164/313 (52%)	106/255 (42%)	29/64 (45%)

The following table shows the completeness of the chemical shift assignments for the full structure. The overall completeness is 42%, i.e. 339 atoms were assigned a chemical shift out of a possible 812. 8 out of 16 assigned methyl groups (LEU and VAL) were assigned stereospecifically.

	Total	¹ H	¹³ C	¹⁵ N
Backbone	128/336 (38%)	63/134 (47%)	34/136 (25%)	31/66 (47%)
Sidechain	174/402 (43%)	103/230 (45%)	68/154 (44%)	3/18 (17%)
Aromatic	37/74 (50%)	19/38 (50%)	17/34 (50%)	1/2 (50%)
Overall	339/812 (42%)	185/402 (46%)	119/324 (37%)	35/86 (41%)

7.1.4 Statistically unusual chemical shifts [i](#)

There are no statistically unusual chemical shifts.

7.1.5 Random Coil Index (RCI) plots [i](#)

The image below reports *random coil index* values for the protein chains in the structure. The height of each bar gives a probability of a given residue to be disordered, as predicted from the available chemical shifts and the amino acid sequence. A value above 0.2 is an indication of significant predicted disorder. The colour of the bar shows whether the residue is in the well-defined core (black) or in the ill-defined residue ranges (cyan), as described in section 2 on ensemble composition.

Random coil index (RCI) for chain A:

