



Full wwPDB EM Validation Report ⓘ

Nov 20, 2022 – 05:15 pm GMT

PDB ID : 3ZFS
EMDB ID : EMD-2097
Title : Cryo-EM structure of the F420-reducing NiFe-hydrogenase from a methanogenic archaeon with bound substrate
Authors : Mills, D.J.; Vitt, S.; Strauss, M.; Shima, S.; Vonck, J.
Deposited on : 2012-12-12
Resolution : 4.00 Å(reported)
Based on initial model : 2WPN

This is a Full wwPDB EM Validation Report for a publicly released PDB entry.

We welcome your comments at validation@mail.wwpdb.org

A user guide is available at

<https://www.wwpdb.org/validation/2017/EMValidationReportHelp>

with specific help available everywhere you see the ⓘ symbol.

The types of validation reports are described at

<http://www.wwpdb.org/validation/2017/FAQs#types>.

The following versions of software and data (see [references ⓘ](#)) were used in the production of this report:

EMDB validation analysis : 0.0.1.dev43
Mogul : 1.8.4, CSD as541be (2020)
MolProbity : 4.02b-467
buster-report : 1.1.7 (2018)
Percentile statistics : 20191225.v01 (using entries in the PDB archive December 25th 2019)
MapQ : 1.9.9
Ideal geometry (proteins) : Engh & Huber (2001)
Ideal geometry (DNA, RNA) : Parkinson et al. (1996)
Validation Pipeline (wwPDB-VP) : 2.31.2

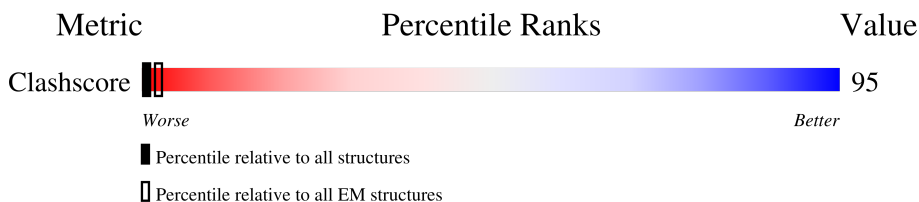
1 Overall quality at a glance

The following experimental techniques were used to determine the structure:

ELECTRON MICROSCOPY

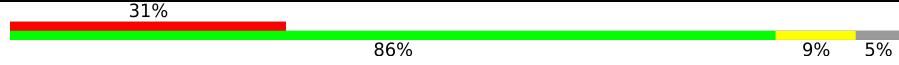
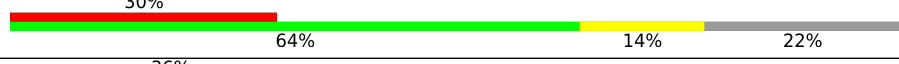
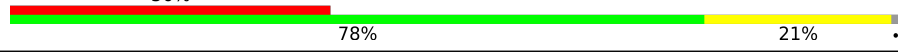
The reported resolution of this entry is 4.00 Å.

Percentile scores (ranging between 0-100) for global validation metrics of the entry are shown in the following graphic. The table shows the number of entries on which the scores are based.



Metric	Whole archive (#Entries)	EM structures (#Entries)
Clashscore	158937	4297

The table below summarises the geometric issues observed across the polymeric chains and their fit to the map. The red, orange, yellow and green segments of the bar indicate the fraction of residues that contain outliers for ≥ 3 , 2, 1 and 0 types of geometric quality criteria respectively. A grey segment represents the fraction of residues that are not modelled. The numeric value for each fraction is indicated below the corresponding segment, with a dot representing fractions $\leq 5\%$. The upper red bar (where present) indicates the fraction of residues that have poor fit to the EM map (all-atom inclusion $< 40\%$). The numeric value is given above the bar.

Mol	Chain	Length	Quality of chain
1	A	405	
2	B	275	
3	C	281	

The following table lists non-polymeric compounds, carbohydrate monomers and non-standard residues in protein, DNA, RNA chains that are outliers for geometric or electron-density-fit criteria:

Mol	Type	Chain	Res	Chirality	Geometry	Clashes	Electron density
7	SF4	B	300	-	-	X	-
7	SF4	C	303	-	-	X	-

2 Entry composition [i](#)

There are 9 unique types of molecules in this entry. The entry contains 985 atoms, of which 0 are hydrogens and 0 are deuteriums.

In the tables below, the AltConf column contains the number of residues with at least one atom in alternate conformation and the Trace column contains the number of residues modelled with at most 2 atoms.

- Molecule 1 is a protein called F420-REDUCING HYDROGENASE, SUBUNIT ALPHA.

Mol	Chain	Residues	Atoms		AltConf	Trace
1	A	385	Total	C	0	385
			385	385		

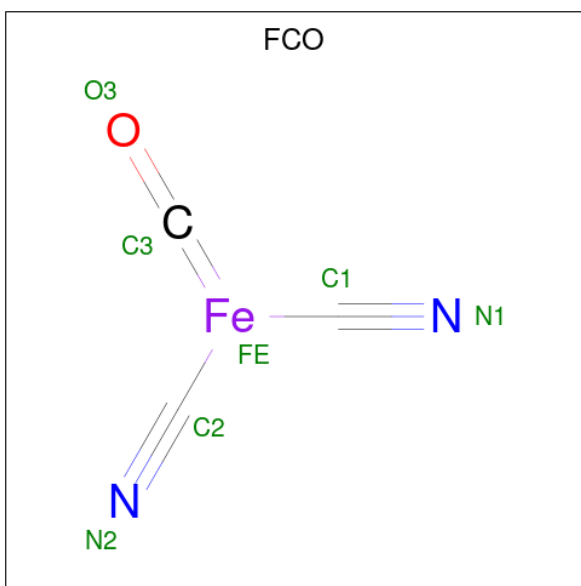
- Molecule 2 is a protein called F420-REDUCING HYDROGENASE, SUBUNIT GAMMA.

Mol	Chain	Residues	Atoms		AltConf	Trace
2	B	215	Total	C	0	215
			215	215		

- Molecule 3 is a protein called F420-REDUCING HYDROGENASE, SUBUNIT BETA.

Mol	Chain	Residues	Atoms		AltConf	Trace
3	C	278	Total	C	0	278
			278	278		

- Molecule 4 is CARBONMONOXIDE-(DICYANO) IRON (three-letter code: FCO) (formula: C_3FeN_2O).



Mol	Chain	Residues	Atoms	AltConf
4	A	1	Total Fe 1 1	0

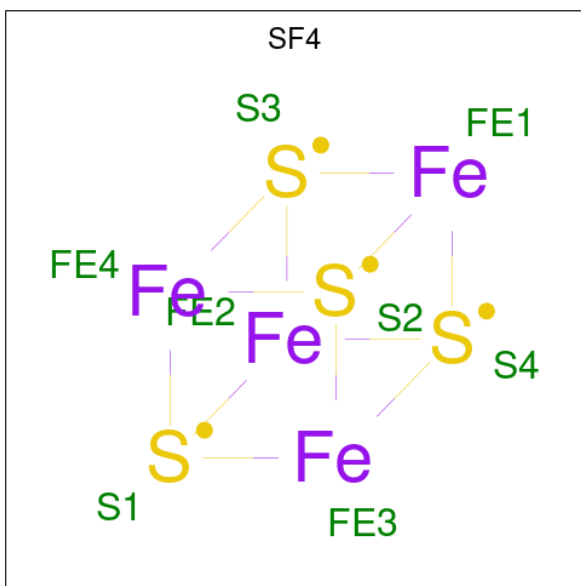
- Molecule 5 is NICKEL (II) ION (three-letter code: NI) (formula: Ni).

Mol	Chain	Residues	Atoms	AltConf
5	A	1	Total Ni 1 1	0

- Molecule 6 is FE (II) ION (three-letter code: FE2) (formula: Fe).

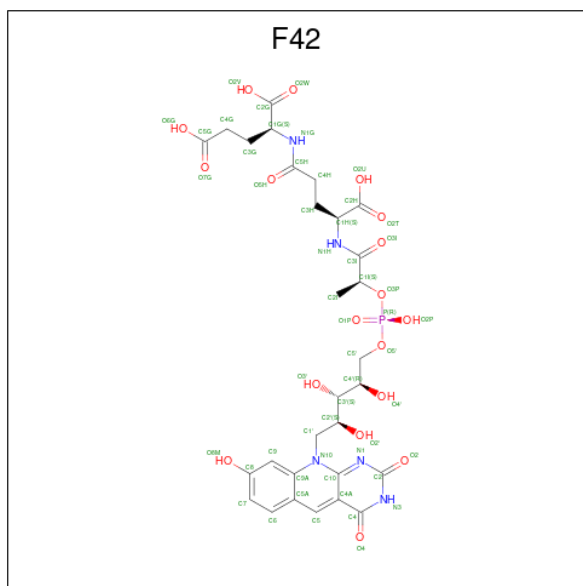
Mol	Chain	Residues	Atoms	AltConf
6	A	1	Total Fe 1 1	0

- Molecule 7 is IRON/SULFUR CLUSTER (three-letter code: SF4) (formula: Fe₄S₄).



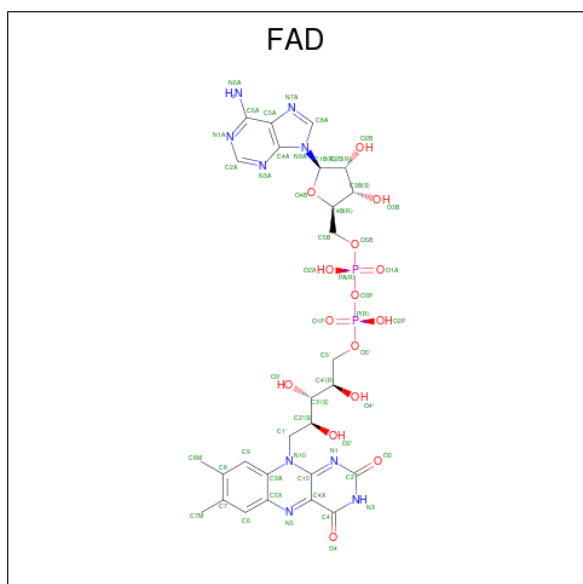
Mol	Chain	Residues	Atoms	AltConf
7	B	1	Total Fe S 24 12 12	0
7	B	1	Total Fe S 24 12 12	0
7	B	1	Total Fe S 24 12 12	0
7	C	1	Total Fe S 8 4 4	0

- Molecule 8 is COENZYME F420 (three-letter code: F42) (formula: $C_{29}H_{36}N_5O_{18}P$).

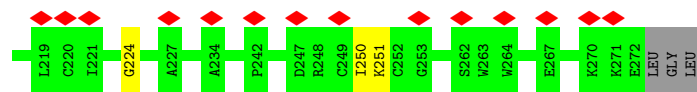


Mol	Chain	Residues	Atoms				AltConf
			Total	C	N	O	
8	C	1	19	13	3	3	0

- Molecule 9 is FLAVIN-ADENINE DINUCLEOTIDE (three-letter code: FAD) (formula: $C_{27}H_{33}N_9O_{15}P_2$).

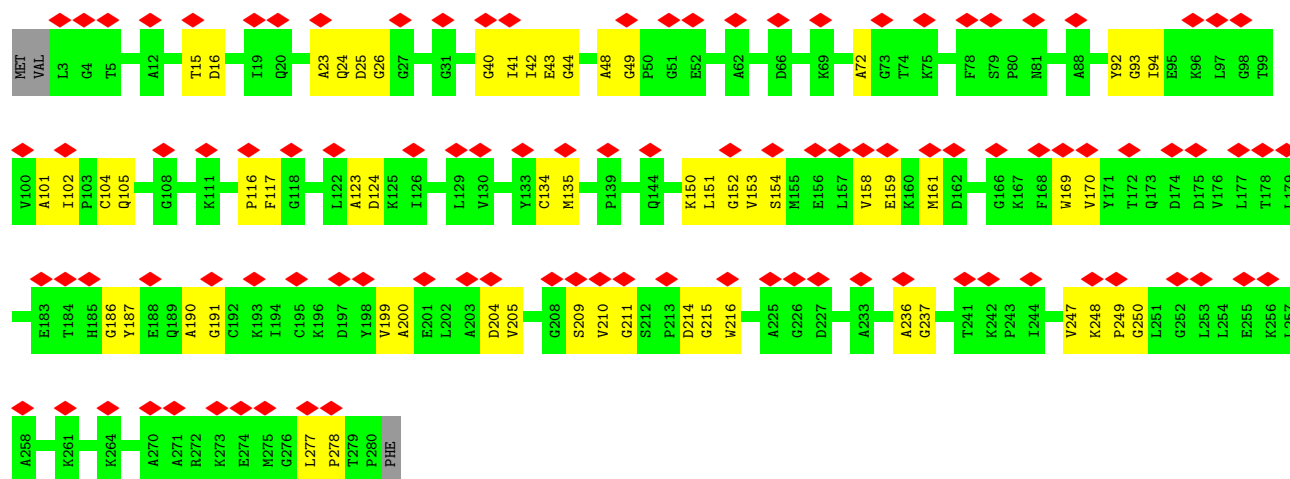


Mol	Chain	Residues	Atoms					AltConf
			Total	C	N	O	P	
9	C	1	53	27	9	15	2	0



• Molecule 3: F420-REDUCING HYDROGENASE, SUBUNIT BETA

Chain C: 36% 78% 21%



4 Experimental information

Property	Value	Source
EM reconstruction method	SINGLE PARTICLE	Depositor
Imposed symmetry	POINT, T	Depositor
Number of particles used	97290	Depositor
Resolution determination method	Not provided	
CTF correction method	PER MICROGRAPH	Depositor
Microscope	FEI POLARA 300	Depositor
Voltage (kV)	200	Depositor
Electron dose ($e^-/\text{\AA}^2$)	15	Depositor
Minimum defocus (nm)	1650	Depositor
Maximum defocus (nm)	3820	Depositor
Magnification	61400	Depositor
Image detector	KODAK SO-163 FILM	Depositor
Maximum map value	1390.650	Depositor
Minimum map value	-464.710	Depositor
Average map value	1.698	Depositor
Map value standard deviation	46.708	Depositor
Recommended contour level	212.0	Depositor
Map size (\AA)	328.32, 328.32, 328.32	wwPDB
Map dimensions	288, 288, 288	wwPDB
Map angles ($^\circ$)	90.0, 90.0, 90.0	wwPDB
Pixel spacing (\AA)	1.14, 1.14, 1.14	Depositor

5 Model quality

5.1 Standard geometry

Bond lengths and bond angles in the following residue types are not validated in this section: FCO, SF4, NI, F42, FAD, FE2

The Z score for a bond length (or angle) is the number of standard deviations the observed value is removed from the expected value. A bond length (or angle) with $|Z| > 5$ is considered an outlier worth inspection. RMSZ is the root-mean-square of all Z scores of the bond lengths (or angles).

There are no protein, RNA or DNA chains available to summarize Z scores of covalent bonds and angles.

There are no bond length outliers.

There are no bond angle outliers.

There are no chirality outliers.

There are no planarity outliers.

5.2 Too-close contacts

In the following table, the Non-H and H(model) columns list the number of non-hydrogen atoms and hydrogen atoms in the chain respectively. The H(added) column lists the number of hydrogen atoms added and optimized by MolProbity. The Clashes column lists the number of clashes within the asymmetric unit, whereas Symm-Clashes lists symmetry-related clashes.

Mol	Chain	Non-H	H(model)	H(added)	Clashes	Symm-Clashes
1	A	385	0	0	21	0
2	B	215	0	0	23	0
3	C	278	0	0	49	0
4	A	1	0	0	0	0
5	A	1	0	0	0	0
6	A	1	0	0	0	0
7	B	24	0	0	3	0
7	C	8	0	0	3	0
8	C	19	0	8	8	0
9	C	53	0	30	12	0
All	All	985	0	38	97	0

The all-atom clashscore is defined as the number of clashes found per 1000 atoms (including hydrogen atoms). The all-atom clashscore for this structure is 95.

All (97) close contacts within the same asymmetric unit are listed below, sorted by their clash magnitude.

Atom-1	Atom-2	Interatomic distance (Å)	Clash overlap (Å)
3:C:25:ASP:CA	9:C:304:FAD:C5'	1.78	1.58
3:C:104:CYS:CA	7:C:303:SF4:S3	2.04	1.45
3:C:25:ASP:CA	9:C:304:FAD:O4'	1.71	1.38
3:C:25:ASP:CA	9:C:304:FAD:C4'	2.11	1.28
3:C:26:GLY:CA	9:C:304:FAD:H51A	1.85	1.06
9:C:304:FAD:O2'	9:C:304:FAD:H9	1.55	1.04
2:B:132:CYS:CA	2:B:136:GLY:CA	2.38	1.01
3:C:209:SER:CA	8:C:285:F42:H5	1.93	0.98
9:C:304:FAD:H9	9:C:304:FAD:C2'	1.95	0.96
3:C:209:SER:CA	8:C:285:F42:C5	2.47	0.93
3:C:26:GLY:CA	9:C:304:FAD:C5B	2.47	0.91
3:C:211:GLY:CA	3:C:249:PRO:CA	2.57	0.83
3:C:102:ILE:CA	3:C:105:GLN:CA	2.60	0.79
1:A:199:PRO:CA	1:A:200:GLU:CA	2.62	0.78
3:C:72:ALA:CA	9:C:304:FAD:H3B	2.14	0.77
3:C:210:VAL:CA	8:C:285:F42:C5	2.64	0.74
9:C:304:FAD:C2'	9:C:304:FAD:C9	2.60	0.74
3:C:215:GLY:CA	3:C:216:TRP:CA	2.70	0.70
1:A:369:TYR:CA	1:A:370:GLY:CA	2.71	0.69
2:B:159:ALA:CA	2:B:160:ASP:CA	2.71	0.68
9:C:304:FAD:C9	9:C:304:FAD:H2'	2.24	0.66
2:B:109:ASP:CA	2:B:110:GLU:CA	2.74	0.66
3:C:210:VAL:CA	8:C:285:F42:H5	2.24	0.66
2:B:59:GLY:CA	7:B:300:SF4:S2	2.84	0.66
1:A:223:ASP:CA	1:A:224:LEU:CA	2.75	0.65
3:C:43:GLU:CA	3:C:44:GLY:CA	2.74	0.64
3:C:151:LEU:CA	3:C:152:GLY:CA	2.75	0.64
2:B:163:ASP:CA	2:B:164:VAL:CA	2.76	0.64
3:C:23:ALA:CA	3:C:24:GLN:CA	2.76	0.63
3:C:40:GLY:CA	3:C:41:ILE:CA	2.77	0.63
3:C:209:SER:CA	8:C:285:F42:C5A	2.77	0.63
3:C:190:ALA:CA	3:C:191:GLY:CA	2.77	0.62
2:B:47:PRO:CA	2:B:48:ARG:CA	2.78	0.62
1:A:8:SER:CA	1:A:9:PRO:CA	2.78	0.62
3:C:42:ILE:CA	3:C:43:GLU:CA	2.77	0.62
3:C:48:ALA:CA	3:C:49:GLY:CA	2.77	0.62
1:A:363:GLU:CA	1:A:364:GLY:CA	2.77	0.62
2:B:97:ASP:CA	2:B:124:LYS:CA	2.78	0.62
3:C:134:CYS:CA	3:C:135:MET:CA	2.78	0.61
2:B:164:VAL:CA	2:B:165:ASP:CA	2.78	0.61
3:C:249:PRO:CA	3:C:250:GLY:CA	2.78	0.61
2:B:201:GLY:CA	2:B:202:TYR:CA	2.78	0.61

Continued on next page...

Continued from previous page...

Atom-1	Atom-2	Interatomic distance (Å)	Clash overlap (Å)
3:C:214:ASP:CA	3:C:215:GLY:CA	2.78	0.61
1:A:368:GLU:CA	1:A:369:TYR:CA	2.78	0.61
2:B:135:THR:CA	2:B:136:GLY:CA	2.78	0.61
2:B:147:GLN:CA	2:B:148:ALA:CA	2.78	0.61
3:C:209:SER:CA	8:C:285:F42:C6	2.78	0.61
1:A:36:SER:CA	1:A:37:ILE:CA	2.79	0.60
2:B:205:ALA:CA	2:B:206:CYS:CA	2.80	0.60
2:B:56:GLY:CA	7:B:300:SF4:S3	2.90	0.60
2:B:136:GLY:CA	2:B:137:CYS:CA	2.80	0.59
1:A:235:TRP:CA	1:A:236:TYR:CA	2.80	0.59
2:B:69:ASP:CA	2:B:70:ILE:CA	2.80	0.59
1:A:202:LEU:CA	1:A:203:GLY:CA	2.81	0.59
3:C:123:ALA:CA	3:C:124:ASP:CA	2.81	0.59
2:B:212:THR:CA	2:B:213:LYS:CA	2.80	0.59
3:C:116:PRO:CA	3:C:117:PHE:CA	2.80	0.59
1:A:215:ILE:CA	1:A:216:TYR:CA	2.81	0.59
3:C:101:ALA:CA	3:C:102:ILE:CA	2.81	0.59
1:A:362:THR:CA	1:A:363:GLU:CA	2.81	0.58
1:A:224:LEU:CA	1:A:225:ASP:CA	2.82	0.58
2:B:66:GLU:CA	2:B:67:ASN:CA	2.82	0.58
3:C:15:THR:CA	3:C:16:ASP:CA	2.83	0.57
3:C:204:ASP:CA	3:C:205:VAL:CA	2.82	0.56
3:C:236:ALA:CA	3:C:237:GLY:CA	2.83	0.56
1:A:148:GLY:CA	1:A:149:ILE:CA	2.83	0.56
2:B:68:TYR:CA	2:B:69:ASP:CA	2.84	0.56
3:C:93:GLY:CA	3:C:94:ILE:CA	2.83	0.56
3:C:247:VAL:CA	3:C:248:LYS:CA	2.84	0.56
3:C:169:TRP:CA	3:C:170:VAL:CA	2.83	0.56
3:C:199:VAL:CA	3:C:200:ALA:CA	2.84	0.55
3:C:209:SER:CA	9:C:304:FAD:O2	2.54	0.55
2:B:210:LEU:CA	2:B:211:GLN:CA	2.84	0.55
1:A:207:GLN:CA	1:A:208:PRO:CA	2.84	0.55
1:A:203:GLY:CA	1:A:204:VAL:CA	2.84	0.55
3:C:158:VAL:CA	3:C:159:GLU:CA	2.85	0.55
3:C:186:GLY:CA	3:C:187:TYR:CA	2.86	0.54
3:C:277:LEU:CA	3:C:278:PRO:CA	2.85	0.54
2:B:250:ILE:CA	2:B:251:LYS:CA	2.85	0.53
1:A:231:MET:CA	1:A:232:PRO:CA	2.86	0.53
2:B:224:GLY:CA	7:B:302:SF4:S1	2.97	0.53
1:A:217:GLY:CA	1:A:218:ASP:CA	2.87	0.52
3:C:92:TYR:CA	3:C:93:GLY:CA	2.88	0.52

Continued on next page...

Continued from previous page...

Atom-1	Atom-2	Interatomic distance (Å)	Clash overlap (Å)
1:A:219:ARG:CA	1:A:220:THR:CA	2.87	0.52
3:C:134:CYS:CA	7:C:303:SF4:S4	2.98	0.52
2:B:165:ASP:CA	2:B:166:LEU:CA	2.89	0.50
3:C:153:VAL:CA	3:C:154:SER:CA	2.91	0.49
3:C:134:CYS:CA	7:C:303:SF4:S1	3.01	0.48
3:C:210:VAL:CA	8:C:285:F42:H6	2.43	0.48
1:A:38:THR:CA	1:A:39:PRO:CA	2.92	0.48
3:C:150:LYS:CA	3:C:151:LEU:CA	2.93	0.47
3:C:161:MET:CA	3:C:170:VAL:CA	2.94	0.46
2:B:171:CYS:CA	2:B:172:PRO:CA	2.94	0.45
1:A:314:ARG:CA	1:A:315:GLY:CA	2.95	0.44
3:C:25:ASP:CA	9:C:304:FAD:O3P	2.67	0.42
3:C:210:VAL:CA	8:C:285:F42:C6	2.99	0.41
1:A:267:GLU:CA	1:A:268:PHE:CA	2.98	0.40

There are no symmetry-related clashes.

5.3 Torsion angles [i](#)

5.3.1 Protein backbone [i](#)

There are no protein backbone outliers to report in this entry.

5.3.2 Protein sidechains [i](#)

There are no protein residues with a non-rotameric sidechain to report in this entry.

5.3.3 RNA [i](#)

There are no RNA molecules in this entry.

5.4 Non-standard residues in protein, DNA, RNA chains [i](#)

There are no non-standard protein/DNA/RNA residues in this entry.

5.5 Carbohydrates [i](#)

There are no monosaccharides in this entry.

5.6 Ligand geometry [i](#)

Of 9 ligands modelled in this entry, 1 is modelled with single atom and 2 are monoatomic - leaving 6 for Mogul analysis.

In the following table, the Counts columns list the number of bonds (or angles) for which Mogul statistics could be retrieved, the number of bonds (or angles) that are observed in the model and the number of bonds (or angles) that are defined in the Chemical Component Dictionary. The Link column lists molecule types, if any, to which the group is linked. The Z score for a bond length (or angle) is the number of standard deviations the observed value is removed from the expected value. A bond length (or angle) with $|Z| > 2$ is considered an outlier worth inspection. RMSZ is the root-mean-square of all Z scores of the bond lengths (or angles).

Mol	Type	Chain	Res	Link	Bond lengths			Bond angles		
					Counts	RMSZ	# Z > 2	Counts	RMSZ	# Z > 2
9	FAD	C	304	-	53,58,58	1.28	5 (9%)	68,89,89	1.35	10 (14%)
7	SF4	C	303	-	0,12,12	-	-	-		
7	SF4	B	301	-	0,12,12	-	-	-		
7	SF4	B	302	-	0,12,12	-	-	-		
8	F42	C	285	-	18,21,55	1.20	1 (5%)	20,31,79	2.91	6 (30%)
7	SF4	B	300	-	0,12,12	-	-	-		

In the following table, the Chirals column lists the number of chiral outliers, the number of chiral centers analysed, the number of these observed in the model and the number defined in the Chemical Component Dictionary. Similar counts are reported in the Torsion and Rings columns. '-' means no outliers of that kind were identified.

Mol	Type	Chain	Res	Link	Chirals	Torsions	Rings
9	FAD	C	304	-	-	20/30/50/50	0/6/6/6
7	SF4	C	303	-	-	-	0/6/5/5
7	SF4	B	301	-	-	-	0/6/5/5
7	SF4	B	302	-	-	-	0/6/5/5
8	F42	C	285	-	-	0/2/2/53	0/3/3/3
7	SF4	B	300	-	-	-	0/6/5/5

All (6) bond length outliers are listed below:

Mol	Chain	Res	Type	Atoms	Z	Observed(Å)	Ideal(Å)
9	C	304	FAD	C9A-C5X	5.05	1.49	1.41
9	C	304	FAD	C8-C7	3.29	1.49	1.40
9	C	304	FAD	C4X-N5	2.50	1.35	1.30
9	C	304	FAD	C5A-C4A	2.48	1.47	1.40
9	C	304	FAD	C4-N3	-2.45	1.34	1.38
8	C	285	F42	C4-N3	2.24	1.36	1.33

All (16) bond angle outliers are listed below:

Mol	Chain	Res	Type	Atoms	Z	Observed(°)	Ideal(°)
8	C	285	F42	C4A-C4-N3	-9.73	117.62	124.40
8	C	285	F42	C2-N3-C4	5.45	119.74	115.14
8	C	285	F42	C4A-C5-C5A	-4.01	116.31	122.27
9	C	304	FAD	P-O3P-PA	-3.60	120.46	132.83
9	C	304	FAD	C3B-C2B-C1B	3.51	106.26	100.98
9	C	304	FAD	N3A-C2A-N1A	-3.17	123.73	128.68
8	C	285	F42	C1'-N10-C9A	3.06	121.49	118.45
9	C	304	FAD	C4-C4X-N5	2.75	122.14	118.23
9	C	304	FAD	C4A-C5A-N7A	-2.69	106.60	109.40
9	C	304	FAD	C4X-C10-N1	-2.63	118.62	124.73
9	C	304	FAD	C10-N1-C2	2.22	121.33	116.90
9	C	304	FAD	O4-C4-C4X	-2.20	120.77	126.60
8	C	285	F42	C10-C4A-C4	-2.18	117.64	119.99
8	C	285	F42	C9A-N10-C10	-2.14	119.10	121.91
9	C	304	FAD	C4X-C4-N3	2.09	118.49	113.19
9	C	304	FAD	C4X-C10-N10	2.05	119.48	116.48

There are no chirality outliers.

All (20) torsion outliers are listed below:

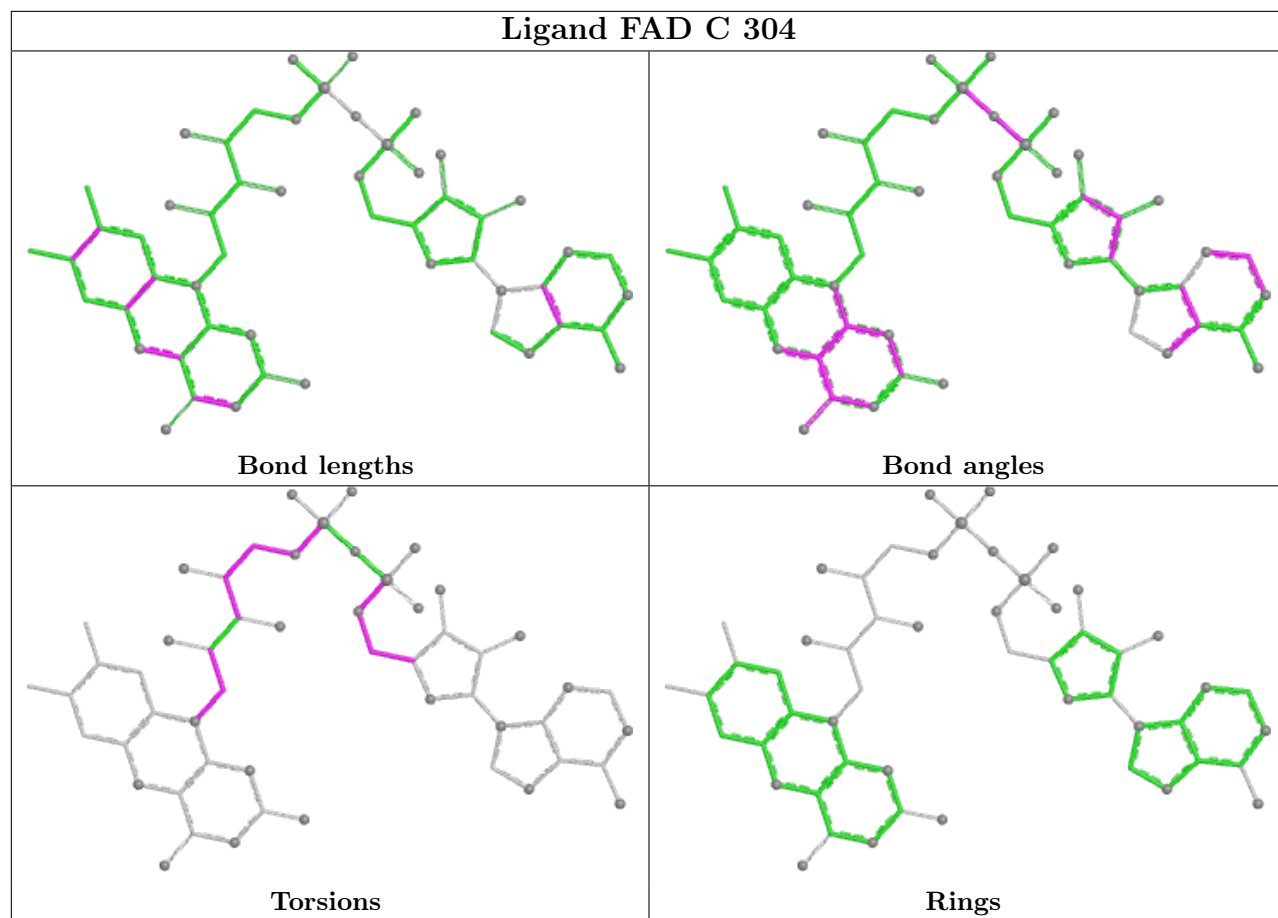
Mol	Chain	Res	Type	Atoms
9	C	304	FAD	C5B-O5B-PA-O3P
9	C	304	FAD	C3B-C4B-C5B-O5B
9	C	304	FAD	C2'-C1'-N10-C9A
9	C	304	FAD	C2'-C1'-N10-C10
9	C	304	FAD	N10-C1'-C2'-O2'
9	C	304	FAD	N10-C1'-C2'-C3'
9	C	304	FAD	C2'-C3'-C4'-O4'
9	C	304	FAD	O3'-C3'-C4'-O4'
9	C	304	FAD	O3'-C3'-C4'-C5'
9	C	304	FAD	C3'-C4'-C5'-O5'
9	C	304	FAD	O4'-C4'-C5'-O5'
9	C	304	FAD	C5'-O5'-P-O1P
9	C	304	FAD	C5'-O5'-P-O2P
9	C	304	FAD	C5'-O5'-P-O3P
9	C	304	FAD	O4B-C4B-C5B-O5B
9	C	304	FAD	C2'-C3'-C4'-C5'
9	C	304	FAD	C4B-C5B-O5B-PA
9	C	304	FAD	C5B-O5B-PA-O1A
9	C	304	FAD	C5B-O5B-PA-O2A
9	C	304	FAD	C4'-C5'-O5'-P

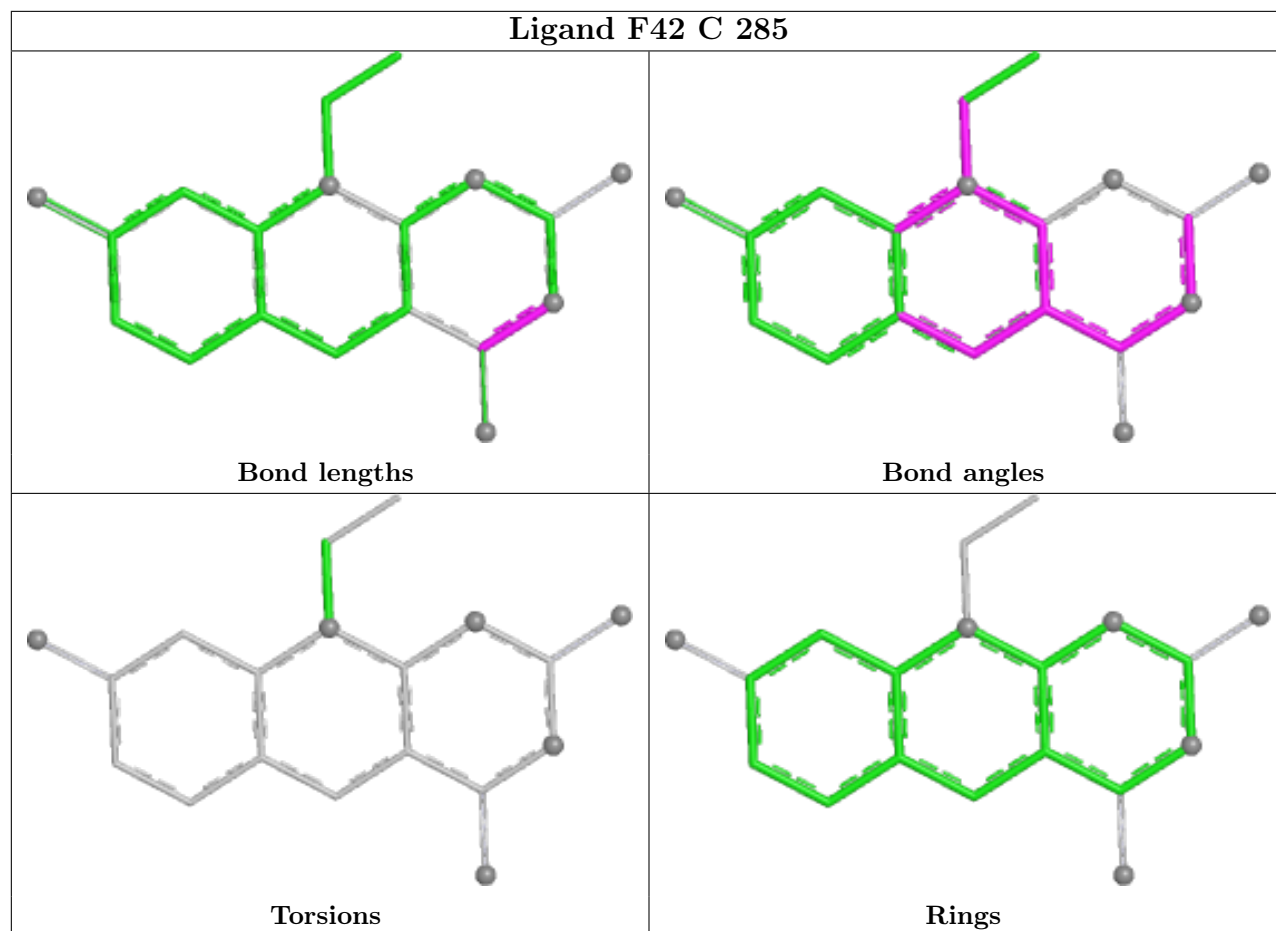
There are no ring outliers.

5 monomers are involved in 26 short contacts:

Mol	Chain	Res	Type	Clashes	Symm-Clashes
9	C	304	FAD	12	0
7	C	303	SF4	3	0
7	B	302	SF4	1	0
8	C	285	F42	8	0
7	B	300	SF4	2	0

The following is a two-dimensional graphical depiction of Mogul quality analysis of bond lengths, bond angles, torsion angles, and ring geometry for all instances of the Ligand of Interest. In addition, ligands with molecular weight > 250 and outliers as shown on the validation Tables will also be included. For torsion angles, if less than 5% of the Mogul distribution of torsion angles is within 10 degrees of the torsion angle in question, then that torsion angle is considered an outlier. Any bond that is central to one or more torsion angles identified as an outlier by Mogul will be highlighted in the graph. For rings, the root-mean-square deviation (RMSD) between the ring in question and similar rings identified by Mogul is calculated over all ring torsion angles. If the average RMSD is greater than 60 degrees and the minimal RMSD between the ring in question and any Mogul-identified rings is also greater than 60 degrees, then that ring is considered an outlier. The outliers are highlighted in purple. The color gray indicates Mogul did not find sufficient equivalents in the CSD to analyse the geometry.





5.7 Other polymers [i](#)

There are no such residues in this entry.

5.8 Polymer linkage issues [i](#)

There are no chain breaks in this entry.

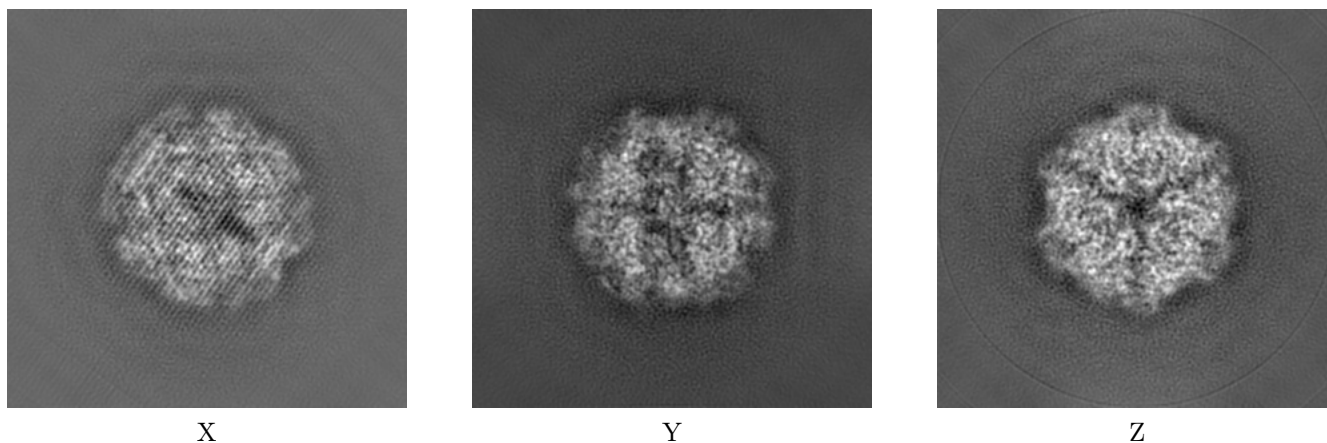
6 Map visualisation [i](#)

This section contains visualisations of the EMDB entry EMD-2097. These allow visual inspection of the internal detail of the map and identification of artifacts.

No raw map or half-maps were deposited for this entry and therefore no images, graphs, etc. pertaining to the raw map can be shown.

6.1 Orthogonal projections [i](#)

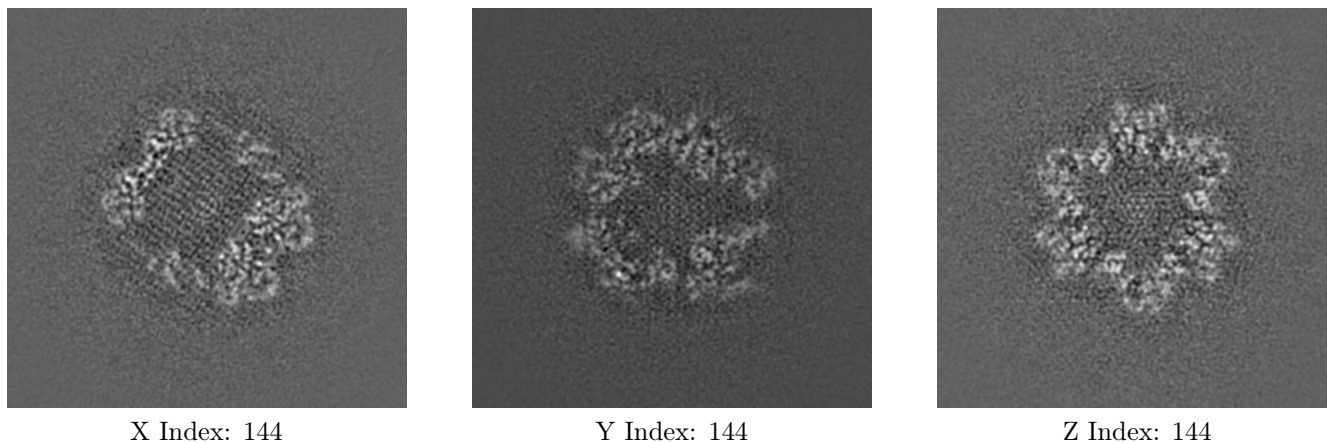
6.1.1 Primary map



The images above show the map projected in three orthogonal directions.

6.2 Central slices [i](#)

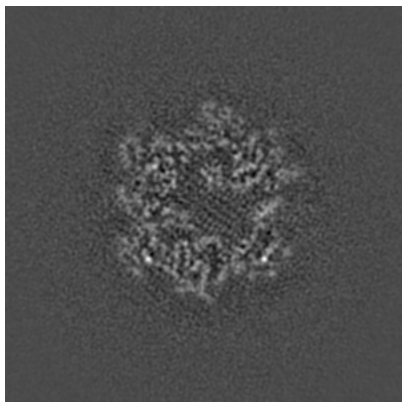
6.2.1 Primary map



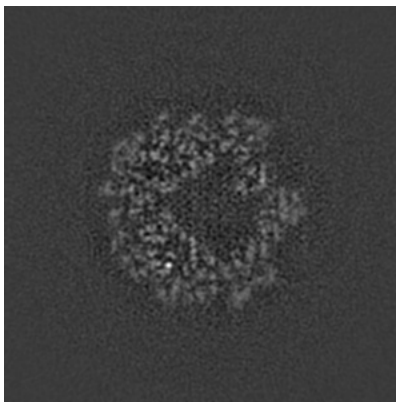
The images above show central slices of the map in three orthogonal directions.

6.3 Largest variance slices [i](#)

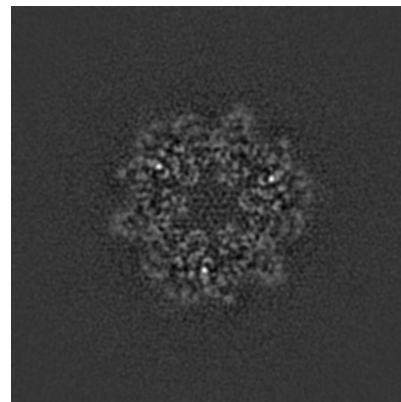
6.3.1 Primary map



X Index: 168



Y Index: 128

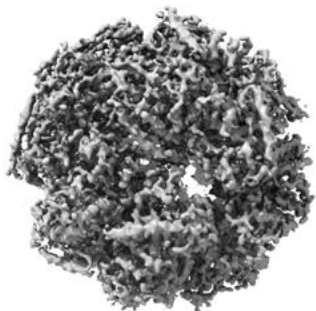


Z Index: 168

The images above show the largest variance slices of the map in three orthogonal directions.

6.4 Orthogonal surface views [i](#)

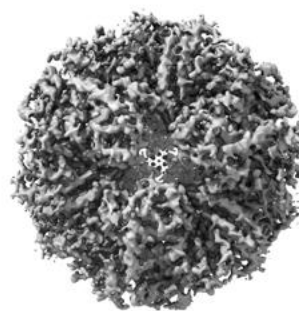
6.4.1 Primary map



X



Y



Z

The images above show the 3D surface view of the map at the recommended contour level 212.0. These images, in conjunction with the slice images, may facilitate assessment of whether an appropriate contour level has been provided.

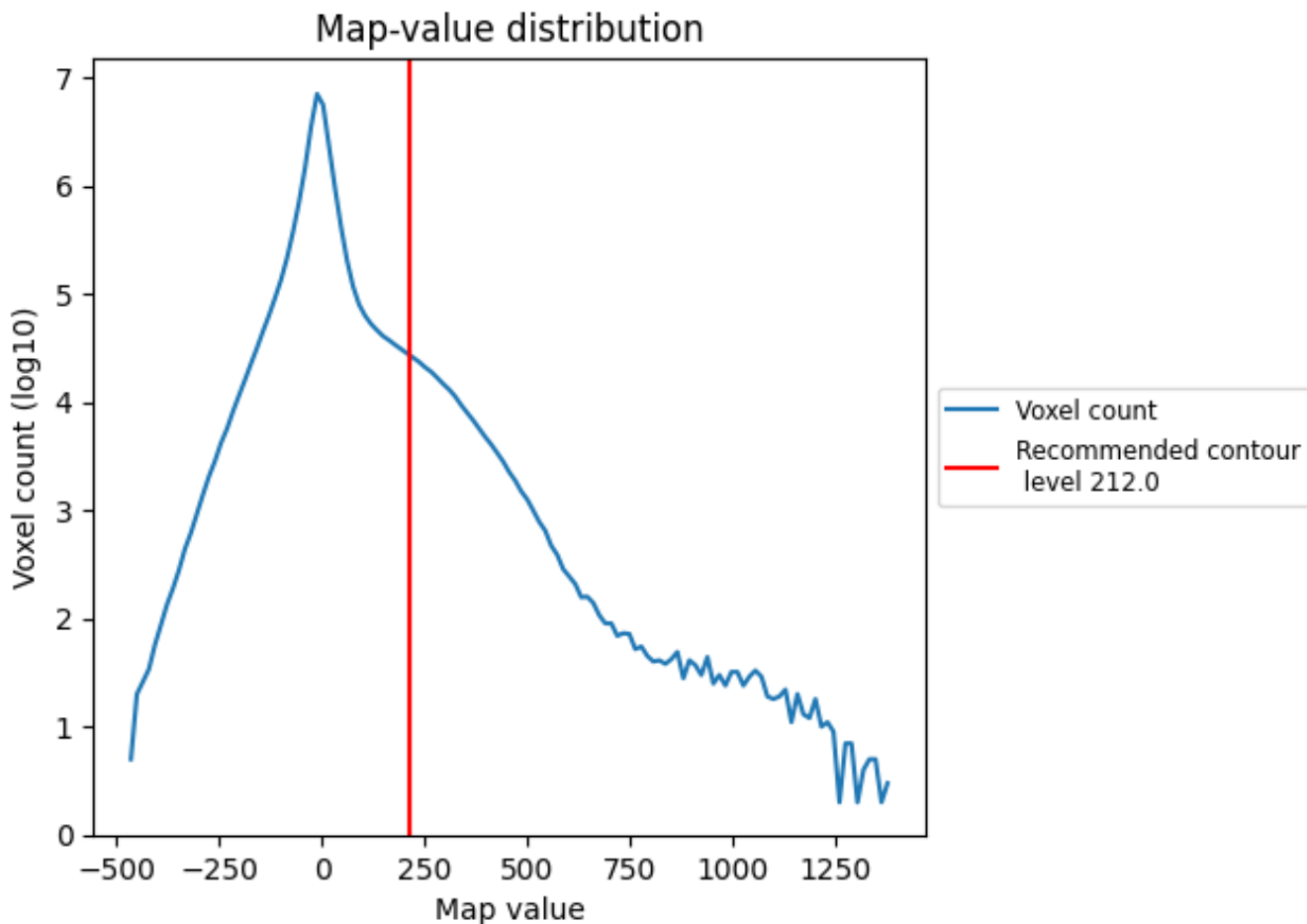
6.5 Mask visualisation

This section was not generated. No masks/segmentation were deposited.

7 Map analysis [i](#)

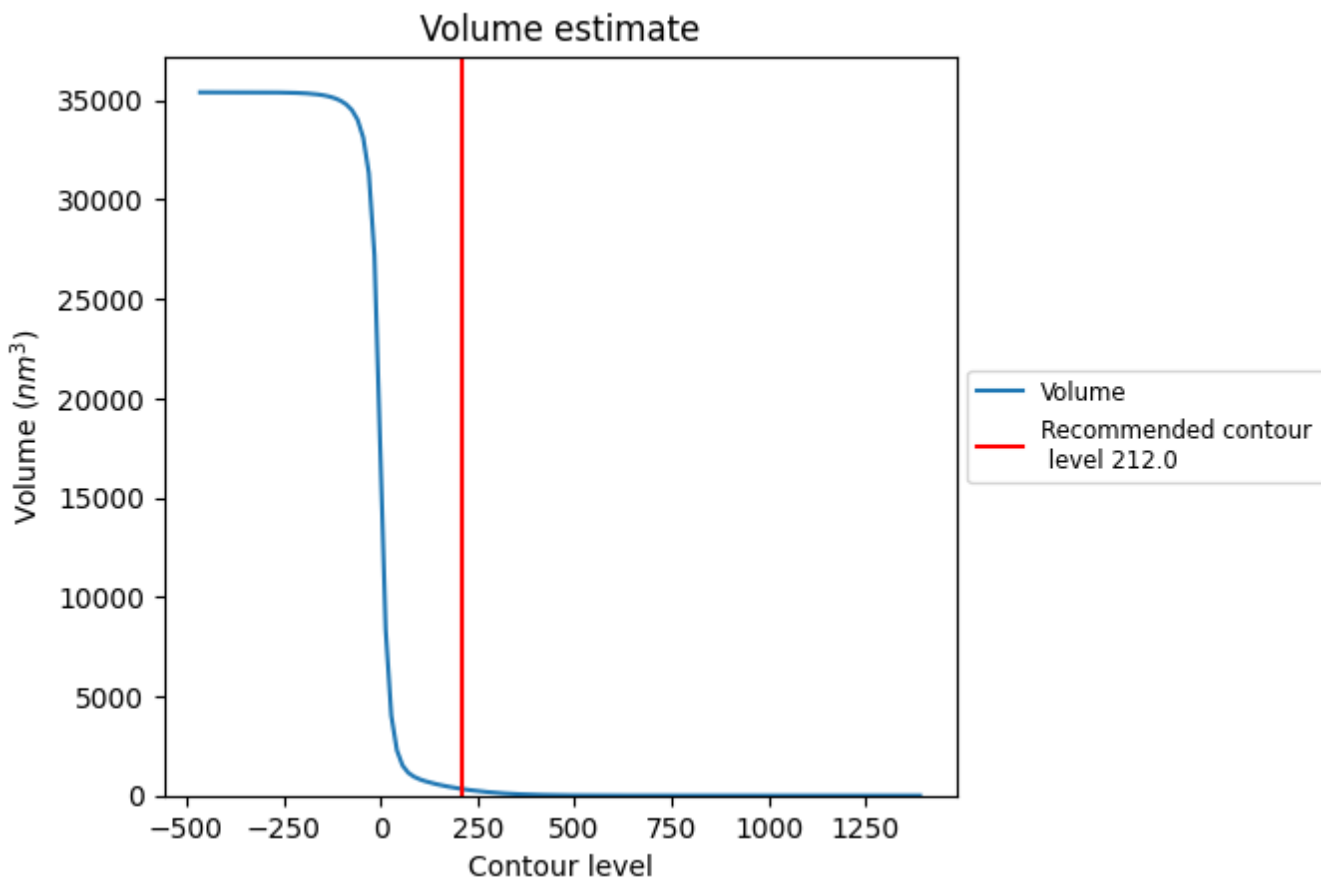
This section contains the results of statistical analysis of the map.

7.1 Map-value distribution [i](#)



The map-value distribution is plotted in 128 intervals along the x-axis. The y-axis is logarithmic. A spike in this graph at zero usually indicates that the volume has been masked.

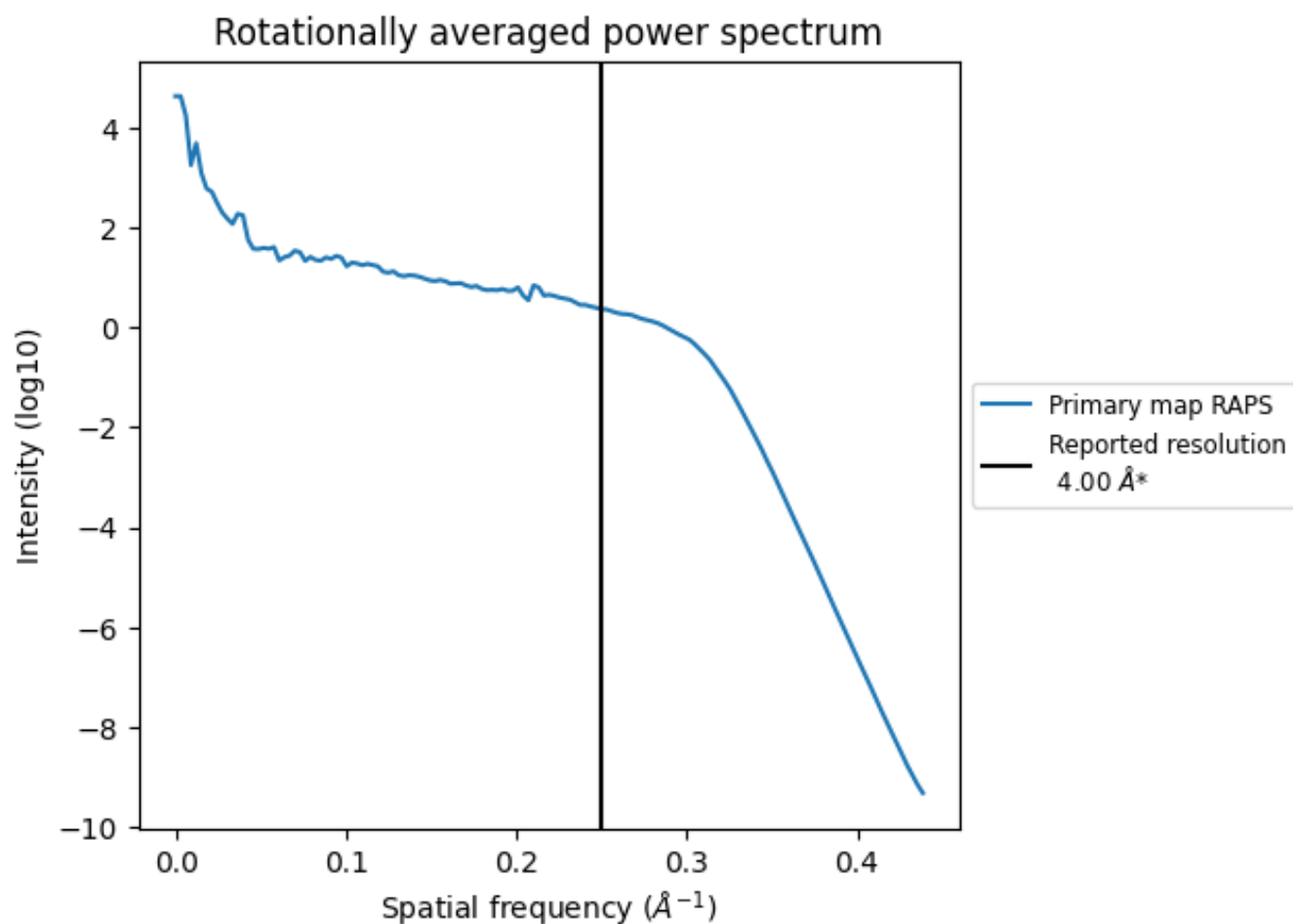
7.2 Volume estimate [i](#)



The volume at the recommended contour level is 328 nm³; this corresponds to an approximate mass of 297 kDa.

The volume estimate graph shows how the enclosed volume varies with the contour level. The recommended contour level is shown as a vertical line and the intersection between the line and the curve gives the volume of the enclosed surface at the given level.

7.3 Rotationally averaged power spectrum [\(i\)](#)



*Reported resolution corresponds to spatial frequency of 0.250 Å⁻¹

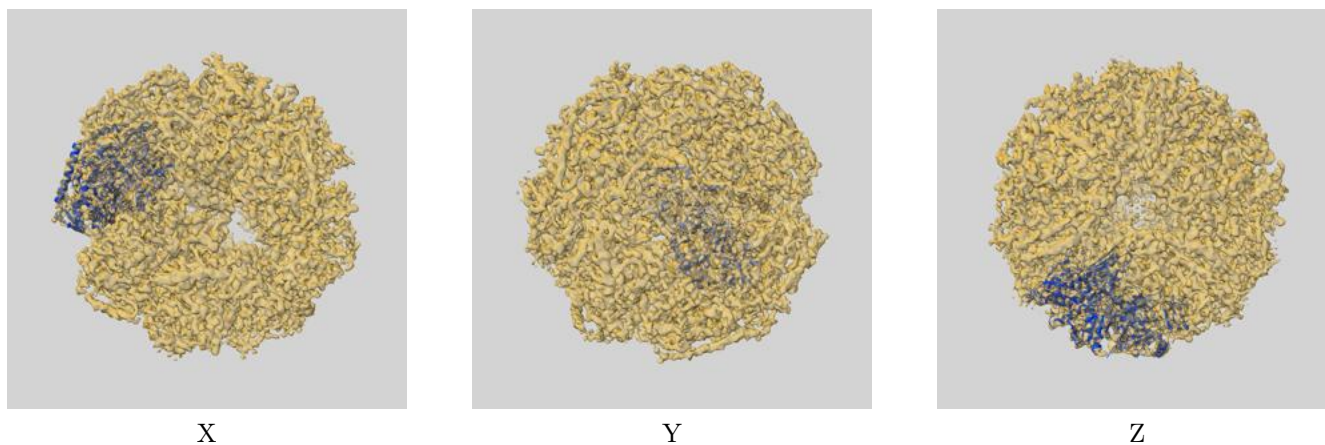
8 Fourier-Shell correlation

This section was not generated. No FSC curve or half-maps provided.

9 Map-model fit [i](#)

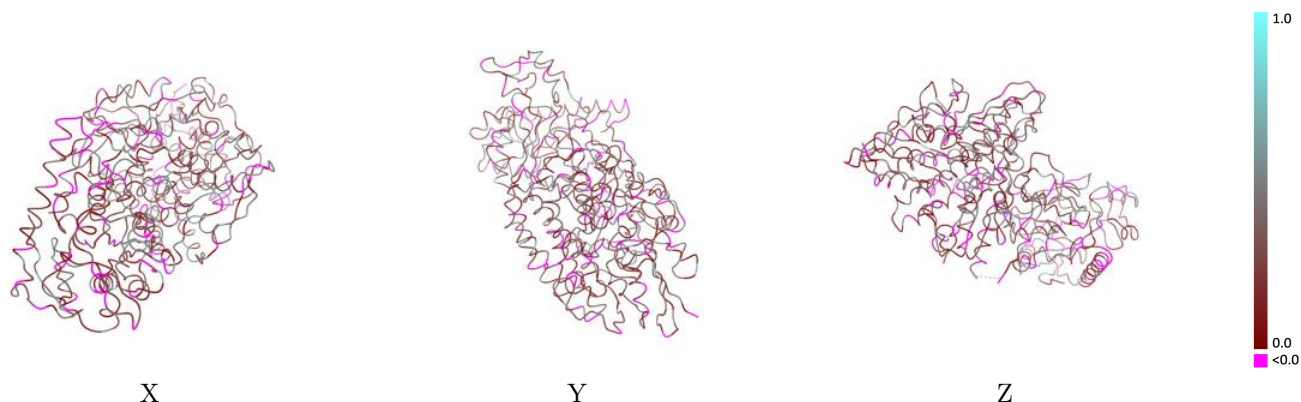
This section contains information regarding the fit between EMDB map EMD-2097 and PDB model 3ZFS. Per-residue inclusion information can be found in section 3 on page 6.

9.1 Map-model overlay [i](#)



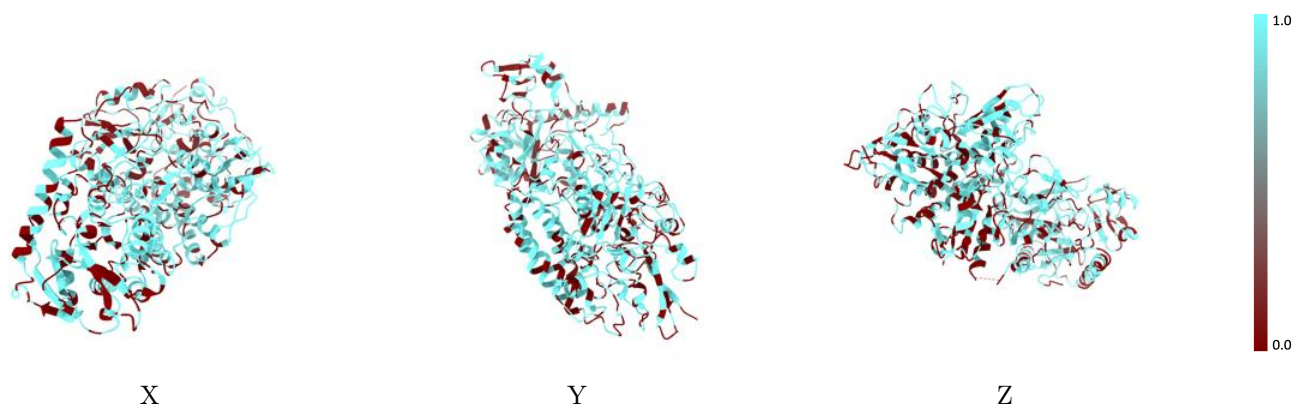
The images above show the 3D surface view of the map at the recommended contour level 212.0 at 50% transparency in yellow overlaid with a ribbon representation of the model coloured in blue. These images allow for the visual assessment of the quality of fit between the atomic model and the map.

9.2 Q-score mapped to coordinate model [\(i\)](#)



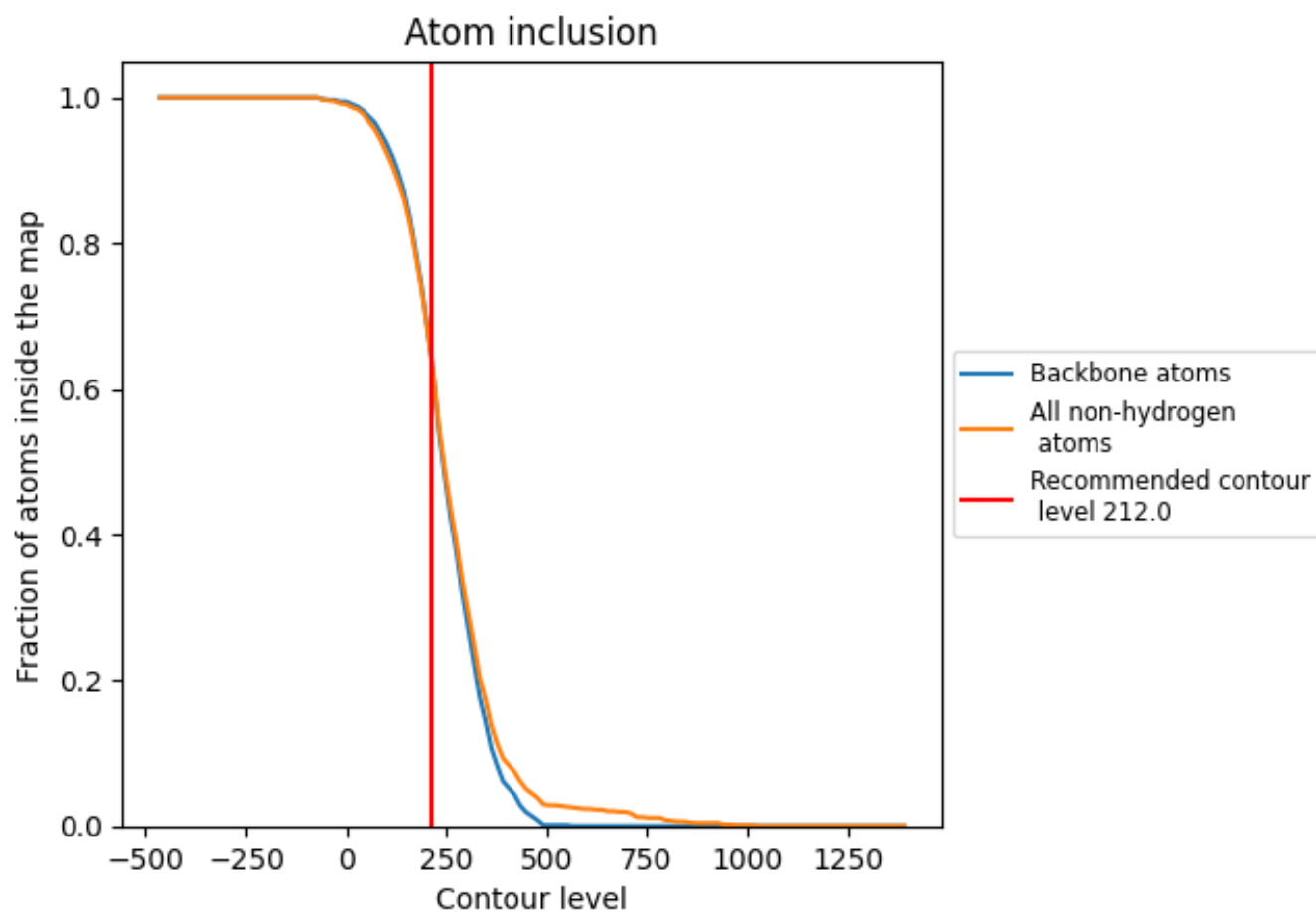
The images above show the model with each residue coloured according to its Q-score. This shows their resolvability in the map with higher Q-score values reflecting better resolvability. Please note: Q-score is calculating the resolvability of atoms, and thus high values are only expected at resolutions at which atoms can be resolved. Low Q-score values may therefore be expected for many entries.

9.3 Atom inclusion mapped to coordinate model [\(i\)](#)



The images above show the model with each residue coloured according to its atom inclusion. This shows to what extent they are inside the map at the recommended contour level (212.0).


9.4 Atom inclusion [i](#)



At the recommended contour level, 65% of all backbone atoms, 64% of all non-hydrogen atoms, are inside the map.

9.5 Map-model fit summary

The table lists the average atom inclusion at the recommended contour level (212.0) and Q-score for the entire model and for each chain.

Chain	Atom inclusion	Q-score
All	 0.6447	 0.2490
A	 0.6778	 0.2440
B	 0.6527	 0.2530
C	 0.6034	 0.2520

