



# Full wwPDB X-ray Structure Validation Report ⓘ

Nov 14, 2023 – 02:37 PM JST

PDB ID : 5ZER  
Title : UDP Glucose alpha tetrahydrobiopterin glycosyltransferase from *Synechococcus* species PCC 7942 - BH2 complex form  
Authors : Killivalavan, A.; Lee, K.H.  
Deposited on : 2018-02-27  
Resolution : 2.39 Å (reported)

This is a Full wwPDB X-ray Structure Validation Report for a publicly released PDB entry.

We welcome your comments at [validation@mail.wwpdb.org](mailto:validation@mail.wwpdb.org)

A user guide is available at

<https://www.wwpdb.org/validation/2017/XrayValidationReportHelp>

with specific help available everywhere you see the ⓘ symbol.

The types of validation reports are described at

<http://www.wwpdb.org/validation/2017/FAQs#types>.

---

The following versions of software and data (see [references ⓘ](#)) were used in the production of this report:

MolProbity : 4.02b-467  
Mogul : 1.8.5 (274361), CSD as541be (2020)  
Xtriage (Phenix) : 1.13  
EDS : 2.36  
buster-report : 1.1.7 (2018)  
Percentile statistics : 20191225.v01 (using entries in the PDB archive December 25th 2019)  
Refmac : 5.8.0158  
CCP4 : 7.0.044 (Gargrove)  
Ideal geometry (proteins) : Engh & Huber (2001)  
Ideal geometry (DNA, RNA) : Parkinson et al. (1996)  
Validation Pipeline (wwPDB-VP) : 2.36

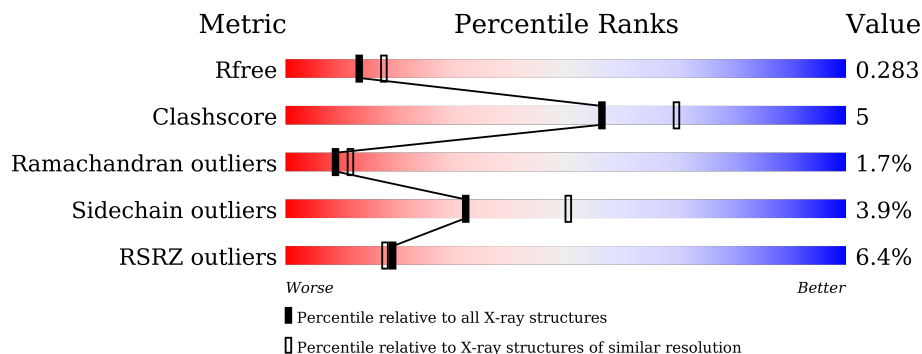
# 1 Overall quality at a glance

The following experimental techniques were used to determine the structure:

*X-RAY DIFFRACTION*

The reported resolution of this entry is 2.39 Å.

Percentile scores (ranging between 0-100) for global validation metrics of the entry are shown in the following graphic. The table shows the number of entries on which the scores are based.



Metric	Whole archive (#Entries)	Similar resolution (#Entries, resolution range(Å))
$R_{free}$	130704	3907 (2.40-2.40)
Clashscore	141614	4398 (2.40-2.40)
Ramachandran outliers	138981	4318 (2.40-2.40)
Sidechain outliers	138945	4319 (2.40-2.40)
RSRZ outliers	127900	3811 (2.40-2.40)

The table below summarises the geometric issues observed across the polymeric chains and their fit to the electron density. The red, orange, yellow and green segments of the lower bar indicate the fraction of residues that contain outliers for  $\geq 3$ , 2, 1 and 0 types of geometric quality criteria respectively. A grey segment represents the fraction of residues that are not modelled. The numeric value for each fraction is indicated below the corresponding segment, with a dot representing fractions  $\leq 5\%$ . The upper red bar (where present) indicates the fraction of residues that have poor fit to the electron density. The numeric value is given above the bar.

Mol	Chain	Length	Quality of chain
1	A	354	
1	B	354	

## 2 Entry composition [i](#)

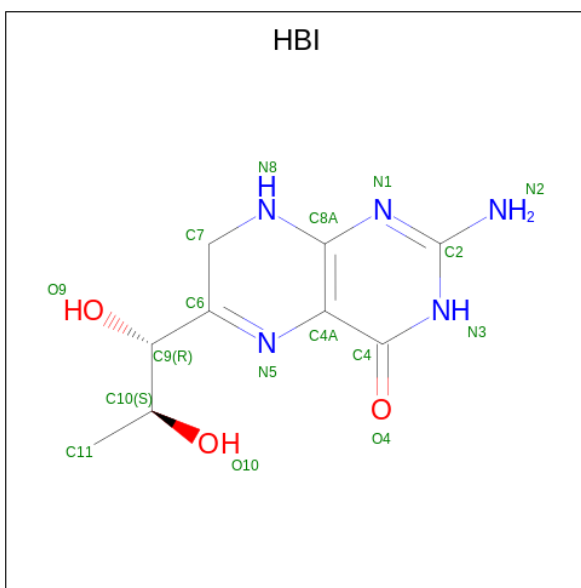
There are 4 unique types of molecules in this entry. The entry contains 5525 atoms, of which 0 are hydrogens and 0 are deuteriums.

In the tables below, the ZeroOcc column contains the number of atoms modelled with zero occupancy, the AltConf column contains the number of residues with at least one atom in alternate conformation and the Trace column contains the number of residues modelled with at most 2 atoms.

- Molecule 1 is a protein called UDP-glucose:tetrahydrobiopterin glucosyltransferase.

Mol	Chain	Residues	Atoms					ZeroOcc	AltConf	Trace	
			Total	C	N	O	S				Se
1	A	354	Total 2692	C 1720	N 470	O 493	S 5	Se 4	0	0	0
1	B	346	Total 2634	C 1684	N 461	O 480	S 5	Se 4	0	0	0

- Molecule 2 is 7,8-DIHYDROBIOPTERIN (three-letter code: HBI) (formula:  $C_9H_{13}N_5O_3$ ) (labeled as "Ligand of Interest" by depositor).



Mol	Chain	Residues	Atoms				ZeroOcc	AltConf
			Total	C	N	O		
2	A	1	Total 17	C 9	N 5	O 3	0	0
2	B	1	Total 17	C 9	N 5	O 3	0	0

- Molecule 3 is GLYCEROL (three-letter code: GOL) (formula:  $C_3H_8O_3$ ).



Mol	Chain	Residues	Atoms	ZeroOcc	AltConf
3	A	1	Total C O 6 3 3	0	0

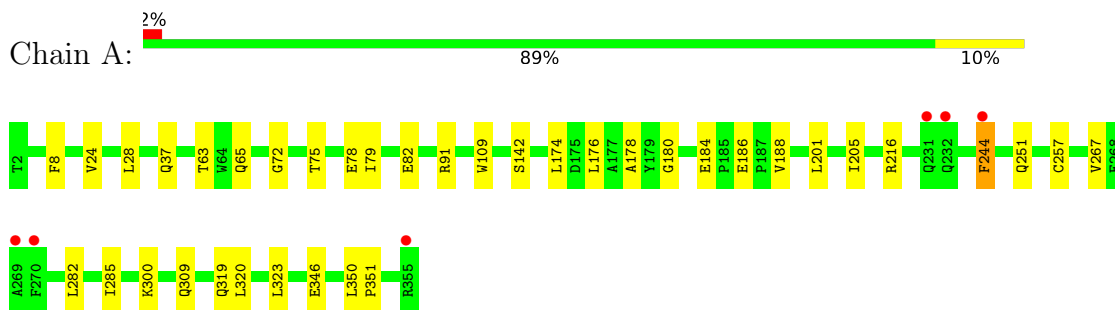
- Molecule 4 is water.

Mol	Chain	Residues	Atoms	ZeroOcc	AltConf
4	A	89	Total O 89 89	0	0
4	B	70	Total O 70 70	0	0

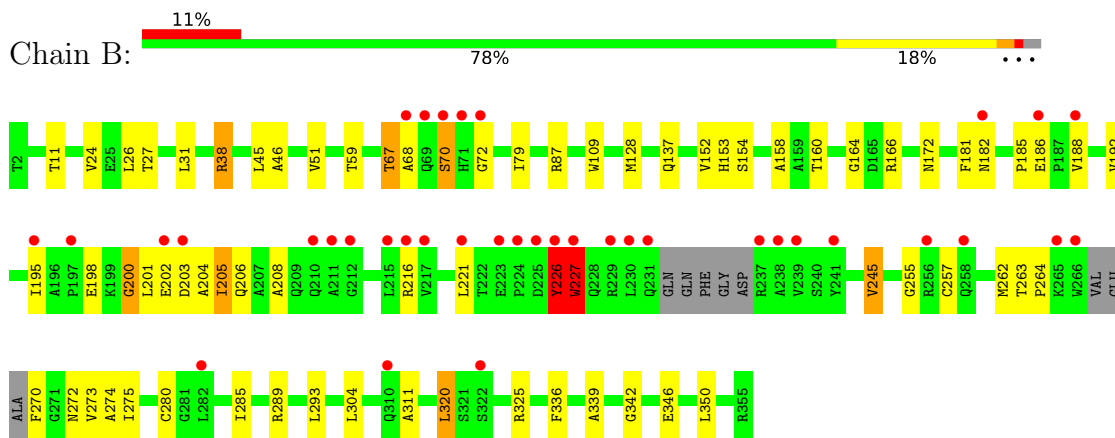
### 3 Residue-property plots [i](#)

These plots are drawn for all protein, RNA, DNA and oligosaccharide chains in the entry. The first graphic for a chain summarises the proportions of the various outlier classes displayed in the second graphic. The second graphic shows the sequence view annotated by issues in geometry and electron density. Residues are color-coded according to the number of geometric quality criteria for which they contain at least one outlier: green = 0, yellow = 1, orange = 2 and red = 3 or more. A red dot above a residue indicates a poor fit to the electron density ( $RSRZ > 2$ ). Stretches of 2 or more consecutive residues without any outlier are shown as a green connector. Residues present in the sample, but not in the model, are shown in grey.

- Molecule 1: UDP-glucose:tetrahydrobiopterin glucosyltransferase



- Molecule 1: UDP-glucose:tetrahydrobiopterin glucosyltransferase



## 4 Data and refinement statistics i

Property	Value	Source
Space group	C 1 2 1	Depositor
Cell constants a, b, c, $\alpha$ , $\beta$ , $\gamma$	167.13Å 80.00Å 53.38Å 90.00° 91.27° 90.00°	Depositor
Resolution (Å)	45.71 – 2.39 45.71 – 2.39	Depositor EDS
% Data completeness (in resolution range)	99.4 (45.71-2.39) 99.4 (45.71-2.39)	Depositor EDS
$R_{merge}$	(Not available)	Depositor
$R_{sym}$	(Not available)	Depositor
$\langle I/\sigma(I) \rangle$ <sup>1</sup>	2.26 (at 2.39Å)	Xtrriage
Refinement program	REFMAC 5.8.0158	Depositor
R, $R_{free}$	0.215 , 0.286 0.219 , 0.283	Depositor DCC
$R_{free}$ test set	1396 reflections (5.01%)	wwPDB-VP
Wilson B-factor (Å <sup>2</sup> )	34.2	Xtrriage
Anisotropy	0.016	Xtrriage
Bulk solvent $k_{sol}$ (e/Å <sup>3</sup> ), $B_{sol}$ (Å <sup>2</sup> )	0.33 , 46.9	EDS
L-test for twinning <sup>2</sup>	$\langle  L  \rangle = 0.45$ , $\langle L^2 \rangle = 0.27$	Xtrriage
Estimated twinning fraction	0.043 for -h,-k,l	Xtrriage
$F_o, F_c$ correlation	0.93	EDS
Total number of atoms	5525	wwPDB-VP
Average B, all atoms (Å <sup>2</sup> )	51.0	wwPDB-VP

Xtrriage's analysis on translational NCS is as follows: *The largest off-origin peak in the Patterson function is 5.62% of the height of the origin peak. No significant pseudotranslation is detected.*

<sup>1</sup>Intensities estimated from amplitudes.

<sup>2</sup>Theoretical values of  $\langle |L| \rangle$ ,  $\langle L^2 \rangle$  for acentric reflections are 0.5, 0.333 respectively for untwinned datasets, and 0.375, 0.2 for perfectly twinned datasets.

## 5 Model quality [i](#)

### 5.1 Standard geometry [i](#)

Bond lengths and bond angles in the following residue types are not validated in this section: GOL, HBI

The Z score for a bond length (or angle) is the number of standard deviations the observed value is removed from the expected value. A bond length (or angle) with  $|Z| > 5$  is considered an outlier worth inspection. RMSZ is the root-mean-square of all Z scores of the bond lengths (or angles).

Mol	Chain	Bond lengths		Bond angles	
		RMSZ	# Z  >5	RMSZ	# Z  >5
1	A	0.60	0/2757	0.78	2/3758 (0.1%)
1	B	0.60	0/2696	0.81	4/3672 (0.1%)
All	All	0.60	0/5453	0.80	6/7430 (0.1%)

Chiral center outliers are detected by calculating the chiral volume of a chiral center and verifying if the center is modelled as a planar moiety or with the opposite hand. A planarity outlier is detected by checking planarity of atoms in a peptide group, atoms in a mainchain group or atoms of a sidechain that are expected to be planar.

Mol	Chain	#Chirality outliers	#Planarity outliers
1	B	0	3

There are no bond length outliers.

All (6) bond angle outliers are listed below:

Mol	Chain	Res	Type	Atoms	Z	Observed( $^{\circ}$ )	Ideal( $^{\circ}$ )
1	A	91	ARG	NE-CZ-NH1	6.98	123.79	120.30
1	B	38	ARG	NE-CZ-NH2	-5.85	117.38	120.30
1	B	38	ARG	NE-CZ-NH1	5.56	123.08	120.30
1	A	91	ARG	NE-CZ-NH2	-5.49	117.56	120.30
1	B	45	LEU	CA-CB-CG	5.46	127.86	115.30
1	B	87	ARG	NE-CZ-NH2	-5.29	117.65	120.30

There are no chirality outliers.

All (3) planarity outliers are listed below:

Mol	Chain	Res	Type	Group
1	B	201	LEU	Peptide
1	B	226	TYR	Peptide

*Continued on next page...*

*Continued from previous page...*

Mol	Chain	Res	Type	Group
1	B	227	TRP	Peptide

## 5.2 Too-close contacts [i](#)

In the following table, the Non-H and H(model) columns list the number of non-hydrogen atoms and hydrogen atoms in the chain respectively. The H(added) column lists the number of hydrogen atoms added and optimized by MolProbity. The Clashes column lists the number of clashes within the asymmetric unit, whereas Symm-Clashes lists symmetry-related clashes.

Mol	Chain	Non-H	H(model)	H(added)	Clashes	Symm-Clashes
1	A	2692	0	2662	19	0
1	B	2634	0	2614	37	0
2	A	17	0	13	1	0
2	B	17	0	13	1	0
3	A	6	0	8	0	0
4	A	89	0	0	3	0
4	B	70	0	0	4	0
All	All	5525	0	5310	53	0

The all-atom clashscore is defined as the number of clashes found per 1000 atoms (including hydrogen atoms). The all-atom clashscore for this structure is 5.

All (53) close contacts within the same asymmetric unit are listed below, sorted by their clash magnitude.

Atom-1	Atom-2	Interatomic distance (Å)	Clash overlap (Å)
1:B:38:ARG:NH2	1:B:339:ALA:O	2.27	0.66
1:A:180:GLY:O	4:A:501:HOH:O	2.13	0.65
1:A:319:GLN:NE2	4:A:502:HOH:O	2.32	0.59
1:A:346:GLU:HA	1:A:350:LEU:HD23	1.86	0.57
1:B:275:ILE:HG13	1:B:336:PHE:CD1	2.40	0.57
1:A:24:VAL:HG23	2:A:401:HBI:H113	1.87	0.56
1:B:280:CYS:SG	4:B:554:HOH:O	2.28	0.56
1:B:275:ILE:HD11	1:B:336:PHE:HB3	1.88	0.56
1:B:272:ASN:O	1:B:275:ILE:HG22	2.08	0.53
1:A:267:VAL:HG12	1:A:267:VAL:O	2.10	0.52
1:B:195:ILE:HD11	1:B:221:LEU:HG	1.91	0.51
1:B:24:VAL:HG23	2:B:401:HBI:H113	1.94	0.50
1:A:186:GLU:OE2	1:A:216:ARG:NH2	2.45	0.49
1:B:202:GLU:N	1:B:203:ASP:HA	2.27	0.49
1:A:72:GLY:O	1:A:75:THR:OG1	2.26	0.48

*Continued on next page...*



Continued from previous page...

Atom-1	Atom-2	Interatomic distance (Å)	Clash overlap (Å)
1:B:166:ARG:O	4:B:501:HOH:O	2.20	0.48
1:B:346:GLU:O	1:B:350:LEU:HB2	2.12	0.48
1:A:65:GLN:NE2	1:A:78:GLU:O	2.44	0.48
1:B:262:MSE:SE	1:B:274:ALA:HB2	2.63	0.48
1:B:182:ASN:HB2	4:B:507:HOH:O	2.13	0.47
1:A:188:VAL:HG23	1:A:257:CYS:HA	1.96	0.47
1:B:205:ILE:HD12	1:B:208:ALA:HB3	1.95	0.46
1:B:255:GLY:HA3	4:B:502:HOH:O	2.15	0.46
1:B:275:ILE:HD11	1:B:336:PHE:CG	2.51	0.46
1:A:309:GLN:NE2	4:A:510:HOH:O	2.47	0.46
1:B:68:ALA:HB3	1:B:128:MSE:HE1	1.97	0.46
1:B:293:LEU:HD23	1:B:304:LEU:HD13	1.96	0.46
1:B:172:ASN:N	1:B:172:ASN:OD1	2.49	0.46
1:B:263:THR:N	1:B:264:PRO:HD3	2.32	0.45
1:B:257:CYS:O	1:B:325:ARG:NH1	2.48	0.45
1:B:188:VAL:HG11	1:B:216:ARG:CZ	2.47	0.45
1:A:178:ALA:O	1:A:251:GLN:HG2	2.19	0.43
1:B:226:TYR:CG	1:B:227:TRP:N	2.86	0.43
1:B:273:VAL:O	1:B:274:ALA:C	2.56	0.43
1:B:200:GLY:O	1:B:204:ALA:HB3	2.19	0.43
1:A:285:ILE:HD11	1:A:320:LEU:HD21	1.99	0.43
1:A:109:TRP:CZ2	1:B:79:ILE:HG21	2.55	0.42
1:B:67:THR:HG23	1:B:70:SER:HB3	2.02	0.42
1:A:82:GLU:HG3	1:B:137:GLN:HE22	1.84	0.42
1:A:63:THR:N	1:A:82:GLU:O	2.49	0.42
1:A:8:PHE:HD1	1:A:28:LEU:HD12	1.86	0.41
1:B:192:VAL:HB	1:B:273:VAL:HG11	2.02	0.41
1:B:264:PRO:O	1:B:289:ARG:NH2	2.54	0.41
1:A:350:LEU:N	1:A:351:PRO:CD	2.84	0.41
1:B:27:THR:O	1:B:31:LEU:HG	2.21	0.41
1:B:153:HIS:HB3	1:B:270:PHE:CE1	2.56	0.40
1:B:198:GLU:N	1:B:198:GLU:OE1	2.54	0.40
1:A:79:ILE:HG21	1:B:109:TRP:CZ2	2.56	0.40
1:A:201:LEU:CD1	1:A:205:ILE:HD11	2.51	0.40
1:B:38:ARG:HE	1:B:342:GLY:HA3	1.85	0.40
1:B:152:VAL:HG21	1:B:158:ALA:HB2	2.03	0.40
1:B:285:ILE:HD11	1:B:320:LEU:HD11	2.02	0.40
1:B:46:ALA:O	1:B:59:THR:HA	2.21	0.40

There are no symmetry-related clashes.

## 5.3 Torsion angles [i](#)

### 5.3.1 Protein backbone [i](#)

In the following table, the Percentiles column shows the percent Ramachandran outliers of the chain as a percentile score with respect to all X-ray entries followed by that with respect to entries of similar resolution.

The Analysed column shows the number of residues for which the backbone conformation was analysed, and the total number of residues.

Mol	Chain	Analysed	Favoured	Allowed	Outliers	Percentiles	
1	A	352/354 (99%)	332 (94%)	18 (5%)	2 (1%)	25	36
1	B	340/354 (96%)	299 (88%)	31 (9%)	10 (3%)	4	4
All	All	692/708 (98%)	631 (91%)	49 (7%)	12 (2%)	9	11

All (12) Ramachandran outliers are listed below:

Mol	Chain	Res	Type
1	B	226	TYR
1	B	227	TRP
1	B	245	VAL
1	B	185	PRO
1	B	200	GLY
1	B	206	GLN
1	B	164	GLY
1	B	311	ALA
1	A	244	PHE
1	A	37	GLN
1	B	186	GLU
1	B	72	GLY

### 5.3.2 Protein sidechains [i](#)

In the following table, the Percentiles column shows the percent sidechain outliers of the chain as a percentile score with respect to all X-ray entries followed by that with respect to entries of similar resolution.

The Analysed column shows the number of residues for which the sidechain conformation was analysed, and the total number of residues.

Mol	Chain	Analysed	Rotameric	Outliers	Percentiles	
1	A	274/271 (101%)	266 (97%)	8 (3%)	42	62

*Continued on next page...*

*Continued from previous page...*

Mol	Chain	Analysed	Rotameric	Outliers	Percentiles	
1	B	269/271 (99%)	256 (95%)	13 (5%)	25	41
All	All	543/542 (100%)	522 (96%)	21 (4%)	32	50

All (21) residues with a non-rotameric sidechain are listed below:

Mol	Chain	Res	Type
1	A	142	SER
1	A	174	LEU
1	A	176	LEU
1	A	184	GLU
1	A	244	PHE
1	A	282	LEU
1	A	300	LYS
1	A	323	LEU
1	B	11	THR
1	B	26	LEU
1	B	51	VAL
1	B	67	THR
1	B	70	SER
1	B	154	SER
1	B	160	THR
1	B	181	PHE
1	B	205	ILE
1	B	226	TYR
1	B	227	TRP
1	B	245	VAL
1	B	320	LEU

Sometimes sidechains can be flipped to improve hydrogen bonding and reduce clashes. All (5) such sidechains are listed below:

Mol	Chain	Res	Type
1	B	30	ASN
1	B	206	GLN
1	B	228	GLN
1	B	310	GLN
1	B	331	GLN

### 5.3.3 RNA

There are no RNA molecules in this entry.

## 5.4 Non-standard residues in protein, DNA, RNA chains [i](#)

There are no non-standard protein/DNA/RNA residues in this entry.

## 5.5 Carbohydrates [i](#)

There are no monosaccharides in this entry.

## 5.6 Ligand geometry [i](#)

3 ligands are modelled in this entry.

In the following table, the Counts columns list the number of bonds (or angles) for which Mogul statistics could be retrieved, the number of bonds (or angles) that are observed in the model and the number of bonds (or angles) that are defined in the Chemical Component Dictionary. The Link column lists molecule types, if any, to which the group is linked. The Z score for a bond length (or angle) is the number of standard deviations the observed value is removed from the expected value. A bond length (or angle) with  $|Z| > 2$  is considered an outlier worth inspection. RMSZ is the root-mean-square of all Z scores of the bond lengths (or angles).

Mol	Type	Chain	Res	Link	Bond lengths			Bond angles		
					Counts	RMSZ	# Z  > 2	Counts	RMSZ	# Z  > 2
2	HBI	A	401	-	13,18,18	1.74	3 (23%)	14,26,26	2.46	6 (42%)
2	HBI	B	401	-	13,18,18	2.29	2 (15%)	14,26,26	2.01	5 (35%)
3	GOL	A	402	-	5,5,5	0.54	0	5,5,5	0.41	0

In the following table, the Chirals column lists the number of chiral outliers, the number of chiral centers analysed, the number of these observed in the model and the number defined in the Chemical Component Dictionary. Similar counts are reported in the Torsion and Rings columns. '2' means no outliers of that kind were identified.

Mol	Type	Chain	Res	Link	Chirals	Torsions	Rings
2	HBI	A	401	-	-	3/4/17/17	0/2/2/2
2	HBI	B	401	-	-	0/4/17/17	0/2/2/2
3	GOL	A	402	-	-	0/4/4/4	-

All (5) bond length outliers are listed below:

Mol	Chain	Res	Type	Atoms	Z	Observed(Å)	Ideal(Å)
2	B	401	HBI	C6-N5	6.89	1.37	1.28
2	A	401	HBI	C6-N5	5.04	1.35	1.28
2	B	401	HBI	C4A-C8A	3.29	1.50	1.41
2	A	401	HBI	C4A-N5	-2.22	1.34	1.38

*Continued on next page...*

Continued from previous page...

Mol	Chain	Res	Type	Atoms	Z	Observed(Å)	Ideal(Å)
2	A	401	HBI	C4A-C8A	2.08	1.47	1.41

All (11) bond angle outliers are listed below:

Mol	Chain	Res	Type	Atoms	Z	Observed(°)	Ideal(°)
2	A	401	HBI	C8A-C4A-C4	5.15	117.90	114.53
2	A	401	HBI	C2-N3-C4	4.20	122.60	115.93
2	A	401	HBI	C4A-C4-N3	-4.11	117.81	123.43
2	B	401	HBI	C2-N3-C4	4.10	122.45	115.93
2	B	401	HBI	C2-N1-C8A	3.84	123.16	114.54
2	A	401	HBI	C2-N1-C8A	3.19	121.68	114.54
2	B	401	HBI	C4A-C4-N3	-2.94	119.41	123.43
2	B	401	HBI	N1-C2-N3	-2.66	121.25	125.42
2	B	401	HBI	N2-C2-N3	2.58	121.27	117.25
2	A	401	HBI	N1-C2-N3	-2.16	122.03	125.42
2	A	401	HBI	N2-C2-N3	2.10	120.53	117.25

There are no chirality outliers.

All (3) torsion outliers are listed below:

Mol	Chain	Res	Type	Atoms
2	A	401	HBI	O10-C10-C9-O9
2	A	401	HBI	C11-C10-C9-C6
2	A	401	HBI	C11-C10-C9-O9

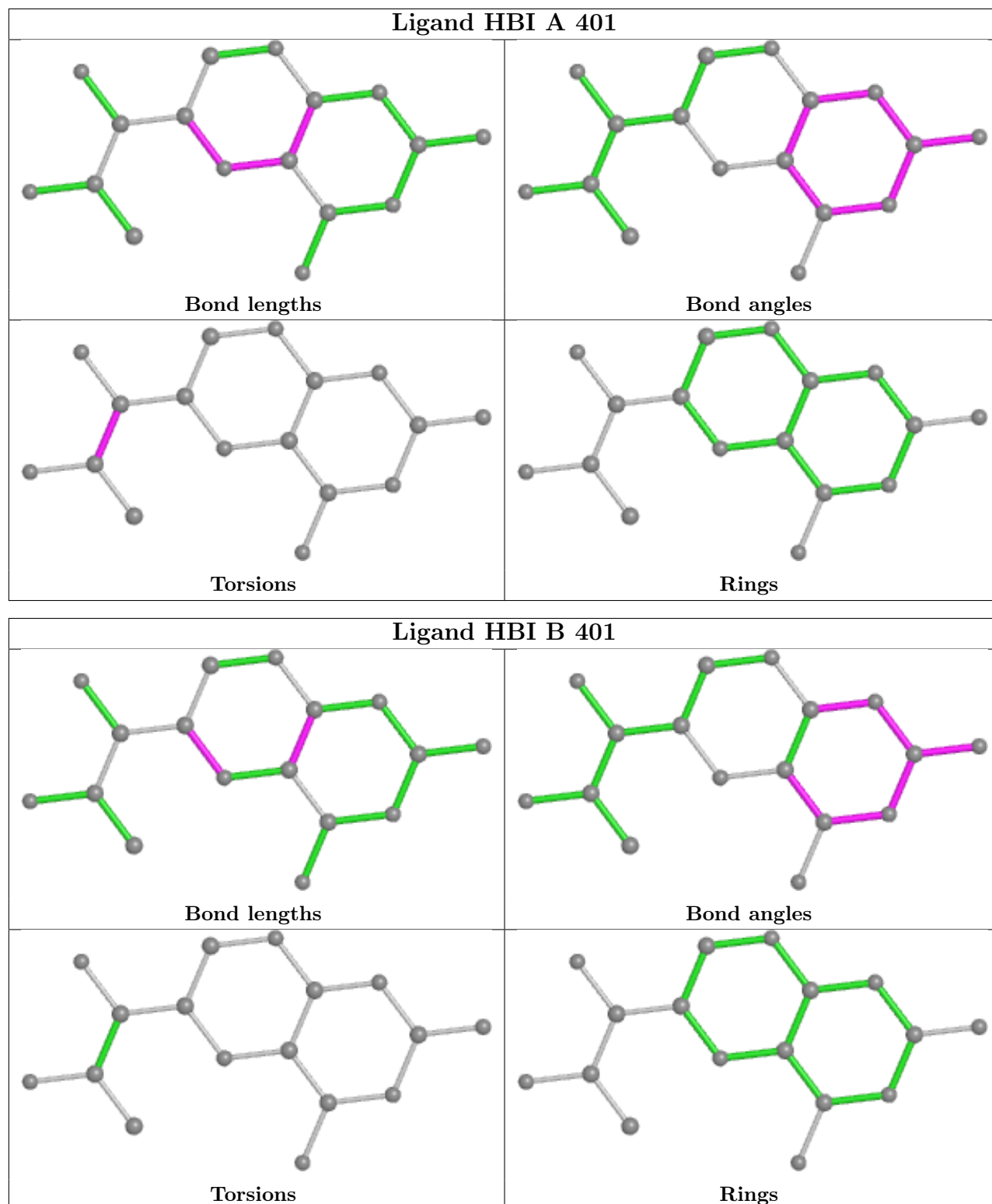
There are no ring outliers.

2 monomers are involved in 2 short contacts:

Mol	Chain	Res	Type	Clashes	Symm-Clashes
2	A	401	HBI	1	0
2	B	401	HBI	1	0

The following is a two-dimensional graphical depiction of Mogul quality analysis of bond lengths, bond angles, torsion angles, and ring geometry for all instances of the Ligand of Interest. In addition, ligands with molecular weight > 250 and outliers as shown on the validation Tables will also be included. For torsion angles, if less than 5% of the Mogul distribution of torsion angles is within 10 degrees of the torsion angle in question, then that torsion angle is considered an outlier. Any bond that is central to one or more torsion angles identified as an outlier by Mogul will be highlighted in the graph. For rings, the root-mean-square deviation (RMSD) between the ring in question and similar rings identified by Mogul is calculated over all ring torsion angles. If the average RMSD is greater than 60 degrees and the minimal RMSD between the ring in question and

any Mogul-identified rings is also greater than 60 degrees, then that ring is considered an outlier. The outliers are highlighted in purple. The color gray indicates Mogul did not find sufficient equivalents in the CSD to analyse the geometry.



## 5.7 Other polymers [i](#)

There are no such residues in this entry.

## 5.8 Polymer linkage issues [i](#)

There are no chain breaks in this entry.

## 6 Fit of model and data

### 6.1 Protein, DNA and RNA chains

In the following table, the column labelled ‘#RSRZ > 2’ contains the number (and percentage) of RSRZ outliers, followed by percent RSRZ outliers for the chain as percentile scores relative to all X-ray entries and entries of similar resolution. The OWAB column contains the minimum, median, 95<sup>th</sup> percentile and maximum values of the occupancy-weighted average B-factor per residue. The column labelled ‘Q < 0.9’ lists the number of (and percentage) of residues with an average occupancy less than 0.9.

Mol	Chain	Analysed	<RSRZ>	#RSRZ>2	OWAB(Å <sup>2</sup> )	Q<0.9
1	A	350/354 (98%)	-0.06	6 (1%) 70 68	18, 43, 76, 117	0
1	B	342/354 (96%)	0.51	38 (11%) 5 4	18, 53, 110, 157	0
All	All	692/708 (97%)	0.22	44 (6%) 19 18	18, 46, 101, 157	0

All (44) RSRZ outliers are listed below:

Mol	Chain	Res	Type	RSRZ
1	B	224	PRO	10.4
1	B	230	LEU	9.4
1	B	211	ALA	7.7
1	B	210	GLN	7.5
1	B	225	ASP	6.2
1	B	231	GLN	6.2
1	B	221	LEU	5.0
1	B	223	GLU	4.8
1	B	188	VAL	4.7
1	B	241	TYR	4.4
1	B	239	VAL	4.2
1	A	270	PHE	4.1
1	B	256	ARG	3.8
1	B	258	GLN	3.6
1	B	238	ALA	3.3
1	B	227	TRP	3.3
1	B	212	GLY	3.3
1	B	282	LEU	3.2
1	A	355	ARG	3.2
1	B	310	GLN	3.1
1	A	269	ALA	3.1
1	A	244	PHE	3.1
1	B	186	GLU	2.8
1	B	322	SER	2.8

*Continued on next page...*



*Continued from previous page...*

Mol	Chain	Res	Type	RSRZ
1	B	229	ARG	2.6
1	B	265	LYS	2.6
1	B	70	SER	2.6
1	B	216	ARG	2.5
1	B	195	ILE	2.4
1	B	217	VAL	2.4
1	B	71	HIS	2.3
1	B	266	TRP	2.3
1	B	69	GLN	2.3
1	B	226	TYR	2.2
1	B	68	ALA	2.2
1	B	215	LEU	2.2
1	A	232	GLN	2.2
1	B	237	ARG	2.2
1	B	197	PRO	2.2
1	B	202	GLU	2.1
1	B	203	ASP	2.1
1	A	231	GLN	2.0
1	B	182	ASN	2.0
1	B	72	GLY	2.0

## 6.2 Non-standard residues in protein, DNA, RNA chains [i](#)

There are no non-standard protein/DNA/RNA residues in this entry.

## 6.3 Carbohydrates [i](#)

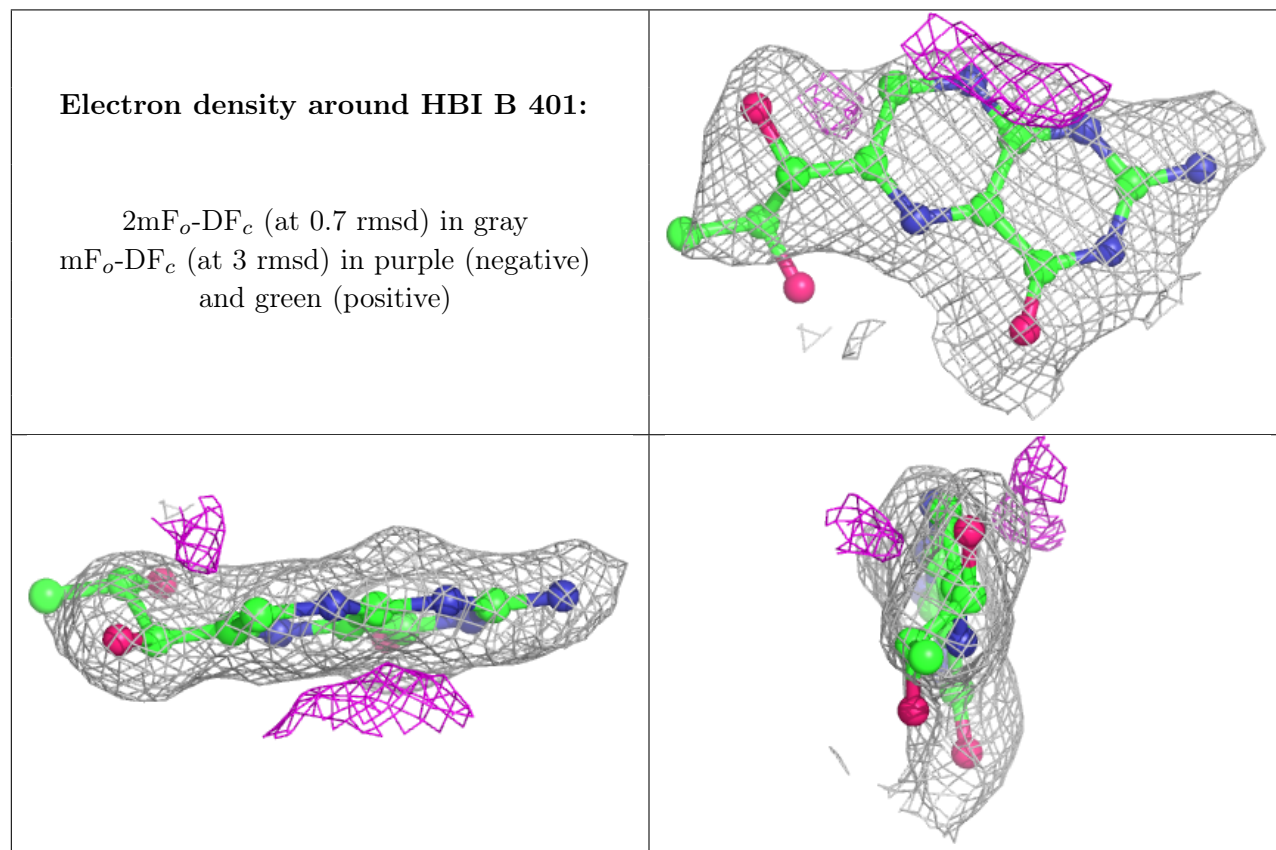
There are no monosaccharides in this entry.

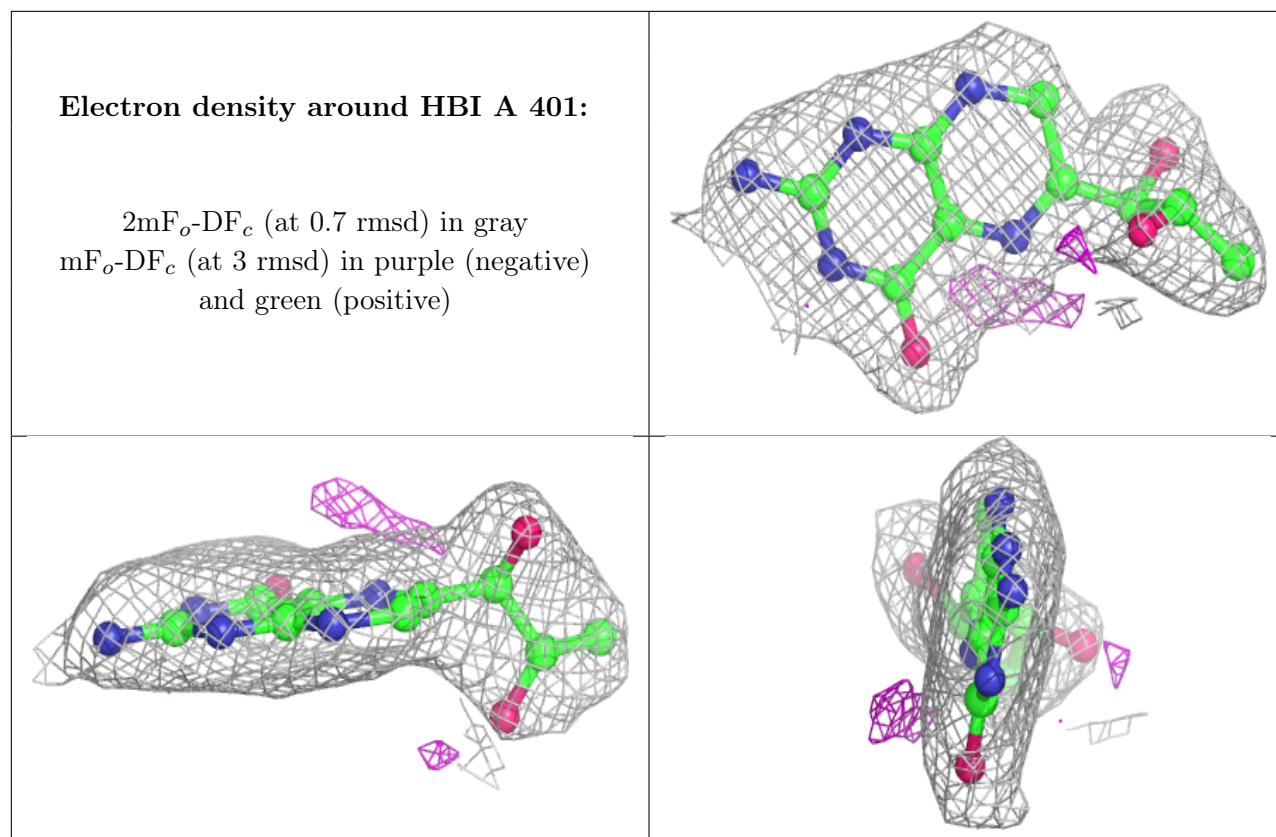
## 6.4 Ligands [i](#)

In the following table, the Atoms column lists the number of modelled atoms in the group and the number defined in the chemical component dictionary. The B-factors column lists the minimum, median, 95<sup>th</sup> percentile and maximum values of B factors of atoms in the group. The column labelled 'Q<0.9' lists the number of atoms with occupancy less than 0.9.

Mol	Type	Chain	Res	Atoms	RSCC	RSR	B-factors(Å <sup>2</sup> )	Q<0.9
3	GOL	A	402	6/6	0.82	0.12	71,76,76,77	0
2	HBI	B	401	17/17	0.92	0.17	37,47,66,75	0
2	HBI	A	401	17/17	0.95	0.12	33,35,41,47	0

The following is a graphical depiction of the model fit to experimental electron density of all instances of the Ligand of Interest. In addition, ligands with molecular weight > 250 and outliers as shown on the geometry validation Tables will also be included. Each fit is shown from different orientation to approximate a three-dimensional view.





## 6.5 Other polymers [i](#)

There are no such residues in this entry.