



Full wwPDB X-ray Structure Validation Report ⓘ

Oct 22, 2023 – 06:18 AM EDT

PDB ID : 2ZCL
Title : Crystal structure of human prostate specific antigen complexed with an activating antibody
Authors : Menez, R.; Stura, E.; Jolivet-Reynaud, C.
Deposited on : 2007-11-09
Resolution : 3.25 Å(reported)

This is a Full wwPDB X-ray Structure Validation Report for a publicly released PDB entry.

We welcome your comments at validation@mail.wwpdb.org

A user guide is available at

<https://www.wwpdb.org/validation/2017/XrayValidationReportHelp>

with specific help available everywhere you see the ⓘ symbol.

The types of validation reports are described at

<http://www.wwpdb.org/validation/2017/FAQs#types>.

The following versions of software and data (see [references ⓘ](#)) were used in the production of this report:

MolProbity : 4.02b-467
Mogul : 1.8.5 (274361), CSD as541be (2020)
Xtriage (Phenix) : 1.13
EDS : 2.36
Percentile statistics : 20191225.v01 (using entries in the PDB archive December 25th 2019)
Refmac : 5.8.0158
CCP4 : 7.0.044 (Gargrove)
Ideal geometry (proteins) : Engh & Huber (2001)
Ideal geometry (DNA, RNA) : Parkinson et al. (1996)
Validation Pipeline (wwPDB-VP) : 2.36

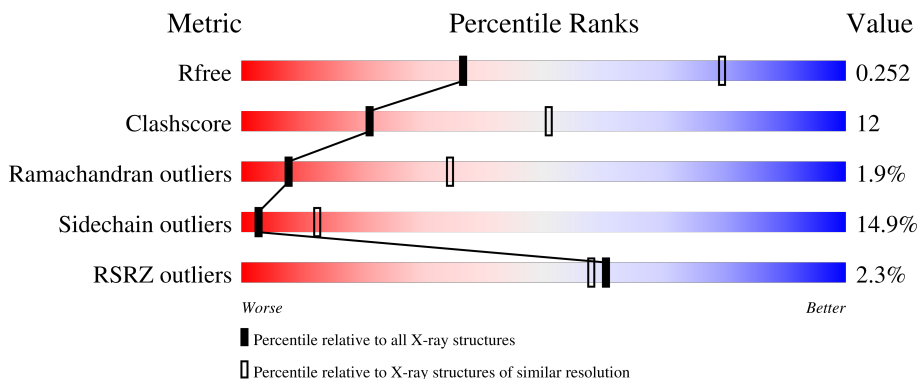
1 Overall quality at a glance

The following experimental techniques were used to determine the structure:

X-RAY DIFFRACTION

The reported resolution of this entry is 3.25 Å.

Percentile scores (ranging between 0-100) for global validation metrics of the entry are shown in the following graphic. The table shows the number of entries on which the scores are based.



Metric	Whole archive (#Entries)	Similar resolution (#Entries, resolution range(Å))
R_{free}	130704	1191 (3.30-3.22)
Clashscore	141614	1251 (3.30-3.22)
Ramachandran outliers	138981	1229 (3.30-3.22)
Sidechain outliers	138945	1228 (3.30-3.22)
RSRZ outliers	127900	1154 (3.30-3.22)

The table below summarises the geometric issues observed across the polymeric chains and their fit to the electron density. The red, orange, yellow and green segments of the lower bar indicate the fraction of residues that contain outliers for ≥ 3 , 2, 1 and 0 types of geometric quality criteria respectively. A grey segment represents the fraction of residues that are not modelled. The numeric value for each fraction is indicated below the corresponding segment, with a dot representing fractions $\leq 5\%$. The upper red bar (where present) indicates the fraction of residues that have poor fit to the electron density. The numeric value is given above the bar.

Mol	Chain	Length	Quality of chain
1	P	237	
2	L	218	
3	H	230	

The following table lists non-polymeric compounds, carbohydrate monomers and non-standard residues in protein, DNA, RNA chains that are outliers for geometric or electron-density-fit criteria:

Mol	Type	Chain	Res	Chirality	Geometry	Clashes	Electron density
4	NAG	P	403	-	-	-	X

2 Entry composition [i](#)

There are 5 unique types of molecules in this entry. The entry contains 5259 atoms, of which 0 are hydrogens and 0 are deuteriums.

In the tables below, the ZeroOcc column contains the number of atoms modelled with zero occupancy, the AltConf column contains the number of residues with at least one atom in alternate conformation and the Trace column contains the number of residues modelled with at most 2 atoms.

- Molecule 1 is a protein called Prostate-specific antigen.

Mol	Chain	Residues	Atoms					ZeroOcc	AltConf	Trace
			Total	C	N	O	S			
1	P	237	1832	1162	323	333	14	0	0	0

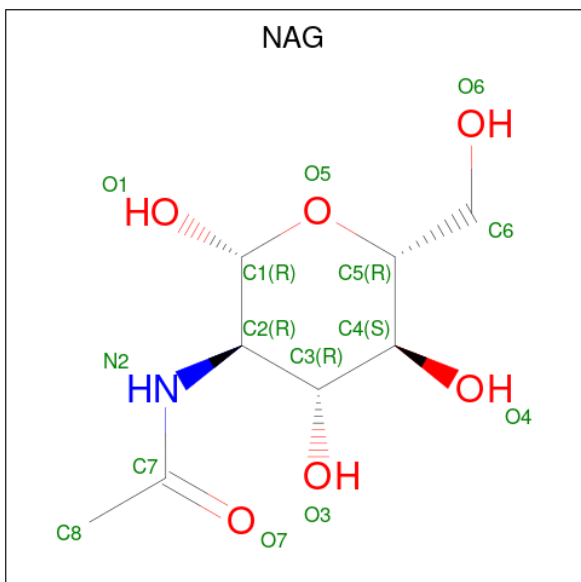
- Molecule 2 is a protein called monoclonal antibody 8G8F5 Fab.

Mol	Chain	Residues	Atoms					ZeroOcc	AltConf	Trace
			Total	C	N	O	S			
2	L	218	1671	1036	279	349	7	0	0	0

- Molecule 3 is a protein called monoclonal antibody 8G8F5 Fab.

Mol	Chain	Residues	Atoms					ZeroOcc	AltConf	Trace
			Total	C	N	O	S			
3	H	230	1716	1077	280	348	11	0	0	0

- Molecule 4 is 2-acetamido-2-deoxy-beta-D-glucopyranose (three-letter code: NAG) (formula: $C_8H_{15}NO_6$).



Mol	Chain	Residues	Atoms				ZeroOcc	AltConf
4	P	1	Total	C	N	O	0	0
			14	8	1	5		
4	P	1	Total	C	N	O	0	0
			14	8	1	5		

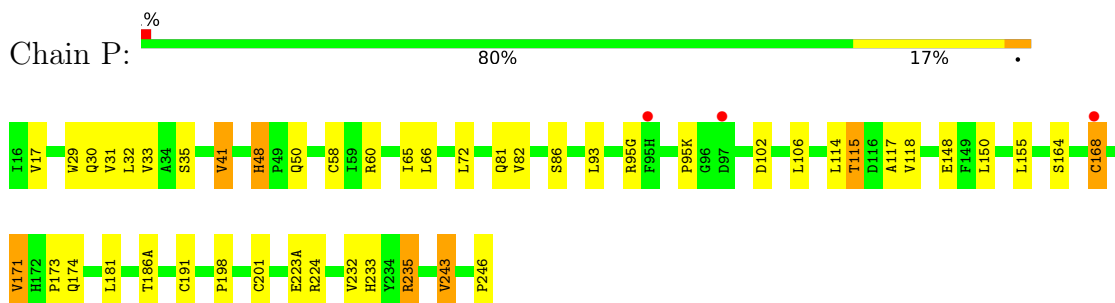
- Molecule 5 is water.

Mol	Chain	Residues	Atoms		ZeroOcc	AltConf
5	P	4	Total	O	0	0
			4	4		
5	L	6	Total	O	0	0
			6	6		
5	H	2	Total	O	0	0
			2	2		

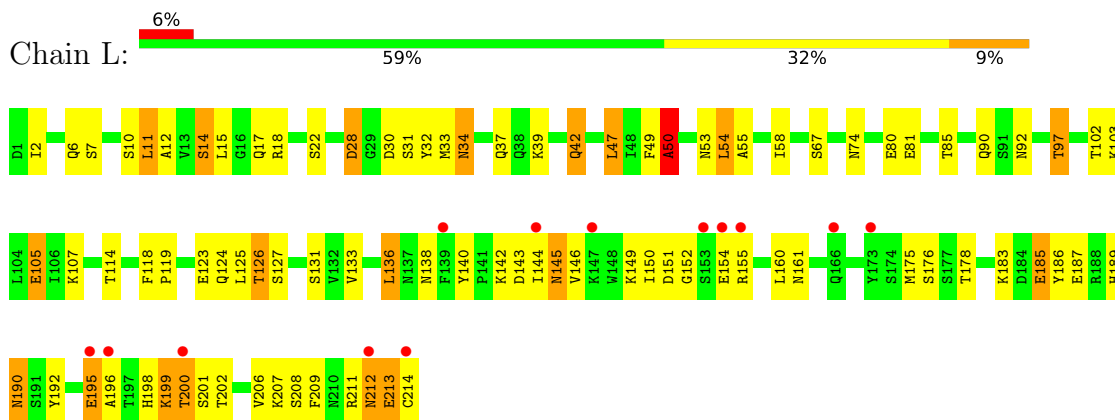
3 Residue-property plots [i](#)

These plots are drawn for all protein, RNA, DNA and oligosaccharide chains in the entry. The first graphic for a chain summarises the proportions of the various outlier classes displayed in the second graphic. The second graphic shows the sequence view annotated by issues in geometry and electron density. Residues are color-coded according to the number of geometric quality criteria for which they contain at least one outlier: green = 0, yellow = 1, orange = 2 and red = 3 or more. A red dot above a residue indicates a poor fit to the electron density ($RSRZ > 2$). Stretches of 2 or more consecutive residues without any outlier are shown as a green connector. Residues present in the sample, but not in the model, are shown in grey.

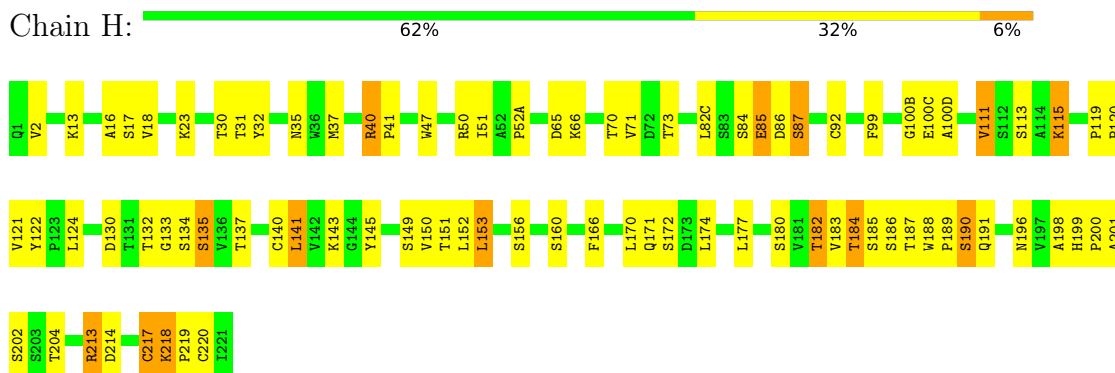
- Molecule 1: Prostate-specific antigen



- Molecule 2: monoclonal antibody 8G8F5 Fab



- Molecule 3: monoclonal antibody 8G8F5 Fab



4 Data and refinement statistics

Property	Value	Source
Space group	P 41 21 2	Depositor
Cell constants a, b, c, α , β , γ	87.98Å 87.98Å 238.06Å 90.00° 90.00° 90.00°	Depositor
Resolution (Å)	82.48 – 3.25 49.30 – 3.25	Depositor EDS
% Data completeness (in resolution range)	99.8 (82.48-3.25) 99.9 (49.30-3.25)	Depositor EDS
R_{merge}	0.14	Depositor
R_{sym}	0.15	Depositor
$\langle I/\sigma(I) \rangle$ ¹	3.42 (at 3.25Å)	Xtrriage
Refinement program	REFMAC 5.2.0005	Depositor
R, R_{free}	0.201 , 0.251 0.202 , 0.252	Depositor DCC
R_{free} test set	770 reflections (4.98%)	wwPDB-VP
Wilson B-factor (Å ²)	70.5	Xtrriage
Anisotropy	0.065	Xtrriage
Bulk solvent k_{sol} (e/Å ³), B_{sol} (Å ²)	0.32 , 60.0	EDS
L-test for twinning ²	$\langle L \rangle = 0.46$, $\langle L^2 \rangle = 0.29$	Xtrriage
Estimated twinning fraction	No twinning to report.	Xtrriage
F_o, F_c correlation	0.91	EDS
Total number of atoms	5259	wwPDB-VP
Average B, all atoms (Å ²)	68.0	wwPDB-VP

Xtrriage's analysis on translational NCS is as follows: *The largest off-origin peak in the Patterson function is 2.99% of the height of the origin peak. No significant pseudotranslation is detected.*

¹Intensities estimated from amplitudes.

²Theoretical values of $\langle |L| \rangle$, $\langle L^2 \rangle$ for acentric reflections are 0.5, 0.333 respectively for untwinned datasets, and 0.375, 0.2 for perfectly twinned datasets.

5 Model quality [i](#)

5.1 Standard geometry [i](#)

Bond lengths and bond angles in the following residue types are not validated in this section: NAG

The Z score for a bond length (or angle) is the number of standard deviations the observed value is removed from the expected value. A bond length (or angle) with $|Z| > 5$ is considered an outlier worth inspection. RMSZ is the root-mean-square of all Z scores of the bond lengths (or angles).

Mol	Chain	Bond lengths		Bond angles	
		RMSZ	# $ Z > 5$	RMSZ	# $ Z > 5$
1	P	0.82	2/1883 (0.1%)	0.87	0/2564
2	L	0.76	0/1707	0.79	0/2319
3	H	0.84	1/1757 (0.1%)	0.87	0/2398
All	All	0.81	3/5347 (0.1%)	0.84	0/7281

Chiral center outliers are detected by calculating the chiral volume of a chiral center and verifying if the center is modelled as a planar moiety or with the opposite hand. A planarity outlier is detected by checking planarity of atoms in a peptide group, atoms in a mainchain group or atoms of a sidechain that are expected to be planar.

Mol	Chain	#Chirality outliers	#Planarity outliers
2	L	0	1

All (3) bond length outliers are listed below:

Mol	Chain	Res	Type	Atoms	Z	Observed(Å)	Ideal(Å)
3	H	220	CYS	CB-SG	-6.04	1.72	1.82
1	P	29	TRP	CB-CG	-6.02	1.39	1.50
1	P	58	CYS	CB-SG	-5.14	1.73	1.81

There are no bond angle outliers.

There are no chirality outliers.

All (1) planarity outliers are listed below:

Mol	Chain	Res	Type	Group
2	L	50	ALA	Peptide

5.2 Too-close contacts

In the following table, the Non-H and H(model) columns list the number of non-hydrogen atoms and hydrogen atoms in the chain respectively. The H(added) column lists the number of hydrogen atoms added and optimized by MolProbity. The Clashes column lists the number of clashes within the asymmetric unit, whereas Symm-Clashes lists symmetry-related clashes.

Mol	Chain	Non-H	H(model)	H(added)	Clashes	Symm-Clashes
1	P	1832	0	1804	26	0
2	L	1671	0	1588	56	0
3	H	1716	0	1666	51	0
4	P	28	0	26	0	0
5	H	2	0	0	0	0
5	L	6	0	0	0	0
5	P	4	0	0	0	0
All	All	5259	0	5084	125	0

The all-atom clashscore is defined as the number of clashes found per 1000 atoms (including hydrogen atoms). The all-atom clashscore for this structure is 12.

All (125) close contacts within the same asymmetric unit are listed below, sorted by their clash magnitude.

Atom-1	Atom-2	Interatomic distance (Å)	Clash overlap (Å)
2:L:90:GLN:HG3	2:L:97:THR:HG22	1.55	0.88
1:P:233:HIS:HD2	3:H:99:PHE:H	1.22	0.81
3:H:40:ARG:HH21	3:H:85:GLU:HA	1.48	0.79
3:H:156:SER:H	3:H:196:ASN:HD21	1.33	0.77
1:P:235:ARG:HH21	2:L:28:ASP:HB3	1.49	0.77
3:H:153:LEU:HB3	3:H:196:ASN:HD22	1.54	0.72
1:P:171:VAL:HG11	1:P:223(A):GLU:O	1.91	0.69
2:L:34:ASN:ND2	2:L:49:PHE:O	2.25	0.69
2:L:39:LYS:HB2	2:L:42:GLN:NE2	2.08	0.69
1:P:233:HIS:HD2	3:H:99:PHE:N	1.92	0.67
3:H:199:HIS:HB3	3:H:204:THR:HB	1.78	0.66
1:P:30:GLN:NE2	1:P:198:PRO:HD2	2.10	0.65
3:H:119:PRO:HB3	3:H:145:TYR:HB3	1.77	0.65
2:L:33:MET:O	2:L:50:ALA:O	2.15	0.65
3:H:16:ALA:O	3:H:82(C):LEU:HD12	1.97	0.65
2:L:133:VAL:HG21	3:H:124:LEU:HD13	1.78	0.64
3:H:35:ASN:HD22	3:H:47:TRP:HE1	1.43	0.64
2:L:124:GLN:HE22	2:L:131:SER:HB2	1.62	0.64
2:L:198:HIS:CD2	2:L:200:THR:HB	2.34	0.62
2:L:195:GLU:HB2	2:L:206:VAL:HG22	1.81	0.61

Continued on next page...

Continued from previous page...

Atom-1	Atom-2	Interatomic distance (Å)	Clash overlap (Å)
2:L:144:ILE:HG22	2:L:198:HIS:ND1	2.17	0.60
1:P:233:HIS:CD2	3:H:99:PHE:H	2.13	0.59
2:L:85:THR:HA	2:L:102:THR:O	2.01	0.59
3:H:218:LYS:HB3	3:H:218:LYS:NZ	2.18	0.59
3:H:31:THR:HG23	3:H:32:TYR:CE2	2.37	0.59
3:H:218:LYS:HB3	3:H:218:LYS:HZ3	1.68	0.59
1:P:32:LEU:HD23	1:P:33:VAL:N	2.18	0.58
3:H:17:SER:OG	3:H:18:VAL:N	2.34	0.58
2:L:125:LEU:C	2:L:127:SER:H	2.05	0.58
2:L:183:LYS:O	2:L:187:GLU:HG2	2.04	0.57
2:L:190:ASN:ND2	2:L:212:ASN:OD1	2.37	0.57
2:L:90:GLN:CG	2:L:97:THR:HG22	2.34	0.56
1:P:243:VAL:O	1:P:246:PRO:HD3	2.06	0.56
2:L:32:TYR:HB2	2:L:92:ASN:HB2	1.87	0.56
1:P:35:SER:HB2	1:P:60:ARG:HG3	1.89	0.55
2:L:146:VAL:HG12	2:L:196:ALA:HB2	1.89	0.55
2:L:192:TYR:O	2:L:208:SER:HB2	2.07	0.54
2:L:39:LYS:HB2	2:L:42:GLN:HE21	1.70	0.54
3:H:171:GLN:CG	3:H:172:SER:N	2.70	0.54
3:H:171:GLN:CG	3:H:172:SER:H	2.22	0.53
3:H:137:THR:HA	3:H:182:THR:HA	1.90	0.53
2:L:80:GLU:CD	2:L:80:GLU:H	2.13	0.52
2:L:212:ASN:O	2:L:214:CYS:N	2.43	0.52
2:L:123:GLU:OE1	2:L:123:GLU:N	2.32	0.52
1:P:115:THR:HB	1:P:117:ALA:H	1.75	0.51
3:H:199:HIS:CE1	3:H:201:ALA:HB3	2.45	0.51
2:L:151:ASP:OD1	2:L:190:ASN:HB3	2.11	0.51
2:L:175:MET:HA	3:H:166:PHE:HE1	1.75	0.51
2:L:12:ALA:HA	2:L:105:GLU:O	2.12	0.50
2:L:133:VAL:HG12	2:L:178:THR:HG23	1.93	0.50
1:P:81:GLN:NE2	1:P:118:VAL:HG21	2.26	0.50
3:H:156:SER:H	3:H:196:ASN:ND2	2.06	0.50
3:H:217:CYS:C	3:H:218:LYS:HZ3	2.13	0.50
3:H:84:SER:O	3:H:86:ASP:N	2.45	0.50
3:H:171:GLN:HG2	3:H:172:SER:H	1.76	0.49
2:L:18:ARG:HH11	2:L:74:ASN:HD21	1.61	0.49
3:H:31:THR:HG23	3:H:32:TYR:CD2	2.48	0.49
3:H:30:THR:HA	3:H:52(A):PRO:HB2	1.96	0.48
3:H:187:THR:HA	3:H:191:GLN:NE2	2.29	0.48
3:H:141:LEU:HD12	3:H:143:LYS:HB2	1.96	0.48
2:L:37:GLN:HB2	2:L:47:LEU:HD21	1.95	0.47

Continued on next page...

Continued from previous page...

Atom-1	Atom-2	Interatomic distance (Å)	Clash overlap (Å)
1:P:168:CYS:HA	1:P:171:VAL:HG23	1.95	0.47
2:L:149:LYS:HA	2:L:154:GLU:HA	1.96	0.47
1:P:66:LEU:HD22	1:P:66:LEU:N	2.29	0.47
1:P:33:VAL:O	1:P:41:VAL:HG13	2.14	0.47
2:L:211:ARG:O	2:L:213:GLU:N	2.47	0.47
3:H:141:LEU:CD1	3:H:143:LYS:HB2	2.45	0.47
3:H:41:PRO:HD2	3:H:87:SER:O	2.15	0.47
3:H:156:SER:N	3:H:196:ASN:HD21	2.08	0.47
2:L:54:LEU:HD11	2:L:58:ILE:O	2.14	0.47
3:H:188:TRP:CD1	3:H:189:PRO:HA	2.50	0.46
1:P:32:LEU:HD12	1:P:72:LEU:HD21	1.98	0.46
2:L:195:GLU:CB	2:L:206:VAL:HG22	2.45	0.46
3:H:51:ILE:HD13	3:H:71:VAL:HG13	1.97	0.46
2:L:150:ILE:O	2:L:151:ASP:HB2	2.16	0.46
3:H:100(B):GLY:O	3:H:100(C):GLU:C	2.54	0.46
1:P:60:ARG:HD3	1:P:60:ARG:HA	1.79	0.45
2:L:34:ASN:HD22	2:L:49:PHE:HA	1.81	0.45
2:L:136:LEU:HD13	2:L:175:MET:HG3	1.97	0.45
1:P:65:ILE:O	1:P:82:VAL:HA	2.16	0.45
2:L:149:LYS:HD2	2:L:152:GLY:O	2.17	0.45
2:L:107:LYS:HA	2:L:140:TYR:OH	2.17	0.45
2:L:34:ASN:ND2	3:H:100(D):ALA:HB2	2.32	0.44
1:P:32:LEU:HD23	1:P:32:LEU:C	2.38	0.44
2:L:6:GLN:HA	2:L:22:SER:O	2.17	0.44
3:H:35:ASN:O	3:H:92:CYS:HA	2.18	0.44
1:P:95(K):PRO:HB3	1:P:173:PRO:HB2	1.99	0.44
2:L:145:ASN:HD22	2:L:146:VAL:H	1.65	0.44
3:H:133:GLY:O	3:H:185:SER:HB3	2.17	0.44
2:L:11:LEU:HD22	2:L:12:ALA:N	2.33	0.44
1:P:235:ARG:NH2	2:L:28:ASP:HB3	2.23	0.44
3:H:218:LYS:NZ	3:H:218:LYS:CB	2.79	0.44
3:H:151:THR:HB	3:H:198:ALA:HB3	1.98	0.44
2:L:53:ASN:HD22	2:L:53:ASN:HA	1.61	0.43
3:H:134:SER:O	3:H:135:SER:C	2.57	0.43
1:P:48:HIS:CD2	1:P:50:GLN:H	2.36	0.43
2:L:14:SER:O	2:L:17:GLN:HB2	2.18	0.43
3:H:151:THR:O	3:H:198:ALA:N	2.45	0.43
2:L:119:PRO:HB3	2:L:209:PHE:CZ	2.54	0.43
3:H:199:HIS:HA	3:H:200:PRO:HD2	1.88	0.43
2:L:124:GLN:HE22	2:L:131:SER:CB	2.29	0.43
2:L:206:VAL:O	2:L:207:LYS:HG3	2.20	0.42

Continued on next page...

Continued from previous page...

Atom-1	Atom-2	Interatomic distance (Å)	Clash overlap (Å)
2:L:18:ARG:NH1	2:L:74:ASN:HD21	2.16	0.42
3:H:40:ARG:HH11	3:H:40:ARG:HB3	1.84	0.42
3:H:119:PRO:HD2	3:H:204:THR:HG21	2.01	0.42
2:L:160:LEU:C	2:L:161:ASN:HD22	2.23	0.42
3:H:183:VAL:HG12	3:H:184:THR:N	2.35	0.42
2:L:55:ALA:HB3	2:L:58:ILE:HG13	2.02	0.42
2:L:118:PHE:HB2	2:L:133:VAL:CG2	2.49	0.42
1:P:235:ARG:HH11	1:P:235:ARG:HG3	1.85	0.41
3:H:115:LYS:HE2	3:H:115:LYS:H	1.84	0.41
1:P:171:VAL:HG11	1:P:224:ARG:HG2	2.03	0.41
3:H:170:LEU:HD12	3:H:174:LEU:C	2.40	0.41
2:L:187:GLU:HA	2:L:187:GLU:OE1	2.19	0.41
3:H:120:PRO:HB2	3:H:122:TYR:CZ	2.55	0.41
1:P:48:HIS:CD2	1:P:48:HIS:C	2.94	0.41
1:P:48:HIS:HD2	1:P:50:GLN:H	1.69	0.41
2:L:185:GLU:O	2:L:186:TYR:C	2.57	0.41
3:H:213:ARG:H	3:H:213:ARG:HG2	1.79	0.41
3:H:82(C):LEU:HB3	3:H:111:VAL:HG21	2.02	0.41
1:P:171:VAL:O	1:P:224:ARG:NH1	2.54	0.41
2:L:189:HIS:HB2	2:L:192:TYR:OH	2.21	0.41
2:L:212:ASN:O	2:L:213:GLU:C	2.60	0.40
3:H:65:ASP:OD2	3:H:65:ASP:N	2.53	0.40
2:L:2:ILE:O	2:L:97:THR:HG21	2.21	0.40

There are no symmetry-related clashes.

5.3 Torsion angles [i](#)

5.3.1 Protein backbone [i](#)

In the following table, the Percentiles column shows the percent Ramachandran outliers of the chain as a percentile score with respect to all X-ray entries followed by that with respect to entries of similar resolution.

The Analysed column shows the number of residues for which the backbone conformation was analysed, and the total number of residues.

Mol	Chain	Analysed	Favoured	Allowed	Outliers	Percentiles
1	P	235/237 (99%)	213 (91%)	21 (9%)	1 (0%)	34 67
2	L	216/218 (99%)	190 (88%)	20 (9%)	6 (3%)	5 25

Continued on next page...

Continued from previous page...

Mol	Chain	Analysed	Favoured	Allowed	Outliers	Percentiles	
3	H	228/230 (99%)	194 (85%)	28 (12%)	6 (3%)	5	27
All	All	679/685 (99%)	597 (88%)	69 (10%)	13 (2%)	8	34

All (13) Ramachandran outliers are listed below:

Mol	Chain	Res	Type
2	L	212	ASN
2	L	213	GLU
3	H	149	SER
1	P	102	ASP
2	L	126	THR
3	H	85	GLU
3	H	135	SER
2	L	138	ASN
2	L	199	LYS
3	H	190	SER
3	H	217	CYS
2	L	50	ALA
3	H	219	PRO

5.3.2 Protein sidechains [i](#)

In the following table, the Percentiles column shows the percent sidechain outliers of the chain as a percentile score with respect to all X-ray entries followed by that with respect to entries of similar resolution.

The Analysed column shows the number of residues for which the sidechain conformation was analysed, and the total number of residues.

Mol	Chain	Analysed	Rotameric	Outliers	Percentiles	
1	P	205/205 (100%)	181 (88%)	24 (12%)	5	21
2	L	189/189 (100%)	157 (83%)	32 (17%)	2	9
3	H	196/196 (100%)	164 (84%)	32 (16%)	2	10
All	All	590/590 (100%)	502 (85%)	88 (15%)	3	12

All (88) residues with a non-rotameric sidechain are listed below:

Mol	Chain	Res	Type
1	P	17	VAL
1	P	31	VAL

Continued on next page...

Continued from previous page...

Mol	Chain	Res	Type
1	P	41	VAL
1	P	48	HIS
1	P	86	SER
1	P	93	LEU
1	P	95(G)	ARG
1	P	106	LEU
1	P	114	LEU
1	P	115	THR
1	P	148	GLU
1	P	150	LEU
1	P	155	LEU
1	P	164	SER
1	P	168	CYS
1	P	171	VAL
1	P	174	GLN
1	P	181	LEU
1	P	186(A)	THR
1	P	191	CYS
1	P	201	CYS
1	P	232	VAL
1	P	235	ARG
1	P	243	VAL
2	L	7	SER
2	L	10	SER
2	L	11	LEU
2	L	14	SER
2	L	15	LEU
2	L	28	ASP
2	L	30	ASP
2	L	31	SER
2	L	34	ASN
2	L	42	GLN
2	L	47	LEU
2	L	54	LEU
2	L	67	SER
2	L	81	GLU
2	L	97	THR
2	L	103	LYS
2	L	105	GLU
2	L	114	THR
2	L	126	THR
2	L	136	LEU

Continued on next page...

Continued from previous page...

Mol	Chain	Res	Type
2	L	142	LYS
2	L	143	ASP
2	L	145	ASN
2	L	155	ARG
2	L	176	SER
2	L	185	GLU
2	L	190	ASN
2	L	195	GLU
2	L	199	LYS
2	L	200	THR
2	L	201	SER
2	L	202	THR
3	H	2	VAL
3	H	13	LYS
3	H	23	LYS
3	H	37	MET
3	H	40	ARG
3	H	50	ARG
3	H	66	LYS
3	H	70	THR
3	H	73	THR
3	H	87	SER
3	H	111	VAL
3	H	113	SER
3	H	115	LYS
3	H	121	VAL
3	H	130	ASP
3	H	132	THR
3	H	140	CYS
3	H	141	LEU
3	H	150	VAL
3	H	152	LEU
3	H	153	LEU
3	H	160	SER
3	H	177	LEU
3	H	180	SER
3	H	182	THR
3	H	184	THR
3	H	186	SER
3	H	190	SER
3	H	202	SER
3	H	213	ARG

Continued on next page...

Continued from previous page...

Mol	Chain	Res	Type
3	H	214	ASP
3	H	218	LYS

Sometimes sidechains can be flipped to improve hydrogen bonding and reduce clashes. All (25) such sidechains are listed below:

Mol	Chain	Res	Type
1	P	27	GLN
1	P	30	GLN
1	P	48	HIS
1	P	50	GLN
1	P	81	GLN
1	P	91	HIS
1	P	210	GLN
1	P	233	HIS
2	L	34	ASN
2	L	42	GLN
2	L	53	ASN
2	L	74	ASN
2	L	89	GLN
2	L	124	GLN
2	L	145	ASN
2	L	156	GLN
2	L	157	ASN
2	L	161	ASN
2	L	190	ASN
2	L	212	ASN
3	H	35	ASN
3	H	43	GLN
3	H	164	HIS
3	H	191	GLN
3	H	196	ASN

5.3.3 RNA [i](#)

There are no RNA molecules in this entry.

5.4 Non-standard residues in protein, DNA, RNA chains [i](#)

There are no non-standard protein/DNA/RNA residues in this entry.

5.5 Carbohydrates [i](#)

There are no monosaccharides in this entry.

5.6 Ligand geometry [i](#)

2 ligands are modelled in this entry.

In the following table, the Counts columns list the number of bonds (or angles) for which Mogul statistics could be retrieved, the number of bonds (or angles) that are observed in the model and the number of bonds (or angles) that are defined in the Chemical Component Dictionary. The Link column lists molecule types, if any, to which the group is linked. The Z score for a bond length (or angle) is the number of standard deviations the observed value is removed from the expected value. A bond length (or angle) with $|Z| > 2$ is considered an outlier worth inspection. RMSZ is the root-mean-square of all Z scores of the bond lengths (or angles).

Mol	Type	Chain	Res	Link	Bond lengths			Bond angles		
					Counts	RMSZ	# $ Z > 2$	Counts	RMSZ	# $ Z > 2$
4	NAG	P	401	-	14,14,15	0.69	0	17,19,21	1.91	4 (23%)
4	NAG	P	403	-	14,14,15	0.92	0	17,19,21	1.69	5 (29%)

In the following table, the Chirals column lists the number of chiral outliers, the number of chiral centers analysed, the number of these observed in the model and the number defined in the Chemical Component Dictionary. Similar counts are reported in the Torsion and Rings columns. '-' means no outliers of that kind were identified.

Mol	Type	Chain	Res	Link	Chirals	Torsions	Rings
4	NAG	P	401	-	-	3/6/23/26	0/1/1/1
4	NAG	P	403	-	-	2/6/23/26	0/1/1/1

There are no bond length outliers.

All (9) bond angle outliers are listed below:

Mol	Chain	Res	Type	Atoms	Z	Observed(°)	Ideal(°)
4	P	401	NAG	C1-O5-C5	4.80	118.70	112.19
4	P	403	NAG	O3-C3-C2	3.68	117.09	109.47
4	P	401	NAG	O5-C5-C4	3.28	118.81	110.83
4	P	403	NAG	C1-O5-C5	2.92	116.14	112.19
4	P	401	NAG	C3-C4-C5	2.64	114.96	110.24
4	P	401	NAG	O3-C3-C2	2.64	114.93	109.47
4	P	403	NAG	O3-C3-C4	-2.55	104.46	110.35
4	P	403	NAG	O7-C7-C8	-2.53	117.35	122.06
4	P	403	NAG	C8-C7-N2	2.12	119.69	116.10

There are no chirality outliers.

All (5) torsion outliers are listed below:

Mol	Chain	Res	Type	Atoms
4	P	401	NAG	C8-C7-N2-C2
4	P	401	NAG	O7-C7-N2-C2
4	P	403	NAG	O5-C5-C6-O6
4	P	403	NAG	C4-C5-C6-O6
4	P	401	NAG	C4-C5-C6-O6

There are no ring outliers.

No monomer is involved in short contacts.

5.7 Other polymers [i](#)

There are no such residues in this entry.

5.8 Polymer linkage issues [i](#)

There are no chain breaks in this entry.

6 Fit of model and data [i](#)

6.1 Protein, DNA and RNA chains [i](#)

In the following table, the column labelled ‘#RSRZ > 2’ contains the number (and percentage) of RSRZ outliers, followed by percent RSRZ outliers for the chain as percentile scores relative to all X-ray entries and entries of similar resolution. The OWAB column contains the minimum, median, 95th percentile and maximum values of the occupancy-weighted average B-factor per residue. The column labelled ‘Q < 0.9’ lists the number of (and percentage) of residues with an average occupancy less than 0.9.

Mol	Chain	Analysed	<RSRZ>	#RSRZ>2	OWAB(Å ²)	Q<0.9
1	P	237/237 (100%)	-0.19	3 (1%) 77 75	45, 59, 75, 85	0
2	L	218/218 (100%)	0.25	13 (5%) 21 21	49, 71, 100, 100	0
3	H	230/230 (100%)	-0.09	0 100 100	44, 70, 97, 100	0
All	All	685/685 (100%)	-0.02	16 (2%) 60 58	44, 66, 100, 100	0

All (16) RSRZ outliers are listed below:

Mol	Chain	Res	Type	RSRZ
2	L	195	GLU	3.2
2	L	214	CYS	2.7
1	P	95(H)	PHE	2.7
2	L	200	THR	2.6
2	L	155	ARG	2.6
2	L	147	LYS	2.6
2	L	139	PHE	2.5
2	L	212	ASN	2.5
2	L	144	ILE	2.3
2	L	153	SER	2.3
2	L	166	GLN	2.3
1	P	97	ASP	2.2
1	P	168	CYS	2.2
2	L	196	ALA	2.2
2	L	173	TYR	2.1
2	L	154	GLU	2.1

6.2 Non-standard residues in protein, DNA, RNA chains [i](#)

There are no non-standard protein/DNA/RNA residues in this entry.

6.3 Carbohydrates [i](#)

There are no monosaccharides in this entry.

6.4 Ligands [i](#)

In the following table, the Atoms column lists the number of modelled atoms in the group and the number defined in the chemical component dictionary. The B-factors column lists the minimum, median, 95th percentile and maximum values of B factors of atoms in the group. The column labelled 'Q< 0.9' lists the number of atoms with occupancy less than 0.9.

Mol	Type	Chain	Res	Atoms	RSCC	RSR	B-factors(Å ²)	Q<0.9
4	NAG	P	403	14/15	0.66	0.40	99,100,100,100	0
4	NAG	P	401	14/15	0.81	0.22	97,98,99,100	0

6.5 Other polymers [i](#)

There are no such residues in this entry.