



Full wwPDB EM Validation Report ⓘ

Aug 25, 2022 – 10:35 am BST

PDB ID : 7ZBU
EMDB ID : EMD-14591
Title : CryoEM structure of SARS-CoV-2 spike monomer in complex with neutralising antibody P008_60
Authors : Rosa, A.; Pye, V.E.; Cronin, N.; Cherepanov, P.
Deposited on : 2022-03-24
Resolution : 4.31 Å (reported)
Based on initial models : 5WI9, 7A92

This is a Full wwPDB EM Validation Report for a publicly released PDB entry.

We welcome your comments at validation@mail.wwpdb.org

A user guide is available at

<https://www.wwpdb.org/validation/2017/EMValidationReportHelp>

with specific help available everywhere you see the ⓘ symbol.

The types of validation reports are described at <http://www.wwpdb.org/validation/2017/FAQs#types>.

The following versions of software and data (see [references ⓘ](#)) were used in the production of this report:

EMDB validation analysis : 0.0.1.dev8
Mogul : 1.8.4, CSD as541be (2020)
MolProbity : 4.02b-467
buster-report : 1.1.7 (2018)
Percentile statistics : 20191225.v01 (using entries in the PDB archive December 25th 2019)
Ideal geometry (proteins) : Engh & Huber (2001)
Ideal geometry (DNA, RNA) : Parkinson et al. (1996)
Validation Pipeline (wwPDB-VP) : 2.30

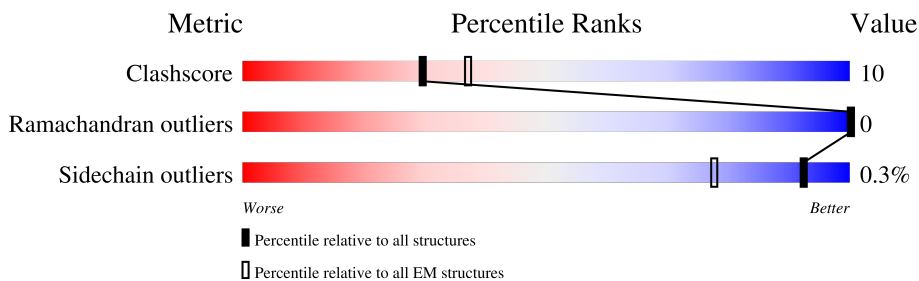
1 Overall quality at a glance i

The following experimental techniques were used to determine the structure:

ELECTRON MICROSCOPY

The reported resolution of this entry is 4.31 Å.

Percentile scores (ranging between 0-100) for global validation metrics of the entry are shown in the following graphic. The table shows the number of entries on which the scores are based.



Metric	Whole archive (#Entries)	EM structures (#Entries)
Clashscore	158937	4297
Ramachandran outliers	154571	4023
Sidechain outliers	154315	3826

The table below summarises the geometric issues observed across the polymeric chains and their fit to the map. The red, orange, yellow and green segments of the bar indicate the fraction of residues that contain outliers for ≥ 3 , 2, 1 and 0 types of geometric quality criteria respectively. A grey segment represents the fraction of residues that are not modelled. The numeric value for each fraction is indicated below the corresponding segment, with a dot representing fractions $\leq 5\%$. The upper red bar (where present) indicates the fraction of residues that have poor fit to the EM map (all-atom inclusion $< 40\%$). The numeric value is given above the bar.

Mol	Chain	Length	Quality of chain
1	A	1287	
2	H	237	
3	L	216	

2 Entry composition i

There are 5 unique types of molecules in this entry. The entry contains 8529 atoms, of which 0 are hydrogens and 0 are deuteriums.

In the tables below, the AltConf column contains the number of residues with at least one atom in alternate conformation and the Trace column contains the number of residues modelled with at most 2 atoms.

- Molecule 1 is a protein called Spike glycoprotein.

Mol	Chain	Residues	Atoms					AltConf	Trace
			Total	C	N	O	S		
1	A	660	5206	3330	866	987	23	0	0

There are 83 discrepancies between the modelled and reference sequences:

Chain	Residue	Modelled	Actual	Comment	Reference
A	-30	MET	-	initiating methionine	UNP P0DTC2
A	-29	GLY	-	expression tag	UNP P0DTC2
A	-28	ILE	-	expression tag	UNP P0DTC2
A	-27	LEU	-	expression tag	UNP P0DTC2
A	-26	PRO	-	expression tag	UNP P0DTC2
A	-25	SER	-	expression tag	UNP P0DTC2
A	-24	PRO	-	expression tag	UNP P0DTC2
A	-23	GLY	-	expression tag	UNP P0DTC2
A	-22	MET	-	expression tag	UNP P0DTC2
A	-21	PRO	-	expression tag	UNP P0DTC2
A	-20	ALA	-	expression tag	UNP P0DTC2
A	-19	LEU	-	expression tag	UNP P0DTC2
A	-18	LEU	-	expression tag	UNP P0DTC2
A	-17	SER	-	expression tag	UNP P0DTC2
A	-16	LEU	-	expression tag	UNP P0DTC2
A	-15	VAL	-	expression tag	UNP P0DTC2
A	-14	SER	-	expression tag	UNP P0DTC2
A	-13	LEU	-	expression tag	UNP P0DTC2
A	-12	LEU	-	expression tag	UNP P0DTC2
A	-11	SER	-	expression tag	UNP P0DTC2
A	-10	VAL	-	expression tag	UNP P0DTC2
A	-9	LEU	-	expression tag	UNP P0DTC2
A	-8	LEU	-	expression tag	UNP P0DTC2
A	-7	MET	-	expression tag	UNP P0DTC2
A	-6	GLY	-	expression tag	UNP P0DTC2
A	-5	CYS	-	expression tag	UNP P0DTC2
A	-4	VAL	-	expression tag	UNP P0DTC2
A	-3	ALA	-	expression tag	UNP P0DTC2

Continued on next page...

Continued from previous page...

Chain	Residue	Modelled	Actual	Comment	Reference
A	-2	GLU	-	expression tag	UNP P0DTC2
A	-1	THR	-	expression tag	UNP P0DTC2
A	0	GLY	-	expression tag	UNP P0DTC2
A	682	SER	ARG	engineered mutation	UNP P0DTC2
A	685	SER	ARG	engineered mutation	UNP P0DTC2
A	986	PRO	LYS	engineered mutation	UNP P0DTC2
A	987	PRO	VAL	engineered mutation	UNP P0DTC2
A	1209	SER	-	expression tag	UNP P0DTC2
A	1210	GLY	-	expression tag	UNP P0DTC2
A	1211	ARG	-	expression tag	UNP P0DTC2
A	1212	GLU	-	expression tag	UNP P0DTC2
A	1213	ASN	-	expression tag	UNP P0DTC2
A	1214	LEU	-	expression tag	UNP P0DTC2
A	1215	TYR	-	expression tag	UNP P0DTC2
A	1216	PHE	-	expression tag	UNP P0DTC2
A	1217	GLN	-	expression tag	UNP P0DTC2
A	1218	GLY	-	expression tag	UNP P0DTC2
A	1219	GLY	-	expression tag	UNP P0DTC2
A	1220	GLY	-	expression tag	UNP P0DTC2
A	1221	GLY	-	expression tag	UNP P0DTC2
A	1222	SER	-	expression tag	UNP P0DTC2
A	1223	GLY	-	expression tag	UNP P0DTC2
A	1224	TYR	-	expression tag	UNP P0DTC2
A	1225	ILE	-	expression tag	UNP P0DTC2
A	1226	PRO	-	expression tag	UNP P0DTC2
A	1227	GLU	-	expression tag	UNP P0DTC2
A	1228	ALA	-	expression tag	UNP P0DTC2
A	1229	PRO	-	expression tag	UNP P0DTC2
A	1230	ARG	-	expression tag	UNP P0DTC2
A	1231	ASP	-	expression tag	UNP P0DTC2
A	1232	GLY	-	expression tag	UNP P0DTC2
A	1233	GLN	-	expression tag	UNP P0DTC2
A	1234	ALA	-	expression tag	UNP P0DTC2
A	1235	TYR	-	expression tag	UNP P0DTC2
A	1236	VAL	-	expression tag	UNP P0DTC2
A	1237	ARG	-	expression tag	UNP P0DTC2
A	1238	LYS	-	expression tag	UNP P0DTC2
A	1239	ASP	-	expression tag	UNP P0DTC2
A	1240	GLY	-	expression tag	UNP P0DTC2
A	1241	GLU	-	expression tag	UNP P0DTC2
A	1242	TRP	-	expression tag	UNP P0DTC2
A	1243	VAL	-	expression tag	UNP P0DTC2

Continued on next page...

Continued from previous page...

Chain	Residue	Modelled	Actual	Comment	Reference
A	1244	LEU	-	expression tag	UNP P0DTC2
A	1245	LEU	-	expression tag	UNP P0DTC2
A	1246	SER	-	expression tag	UNP P0DTC2
A	1247	THR	-	expression tag	UNP P0DTC2
A	1248	PHE	-	expression tag	UNP P0DTC2
A	1249	LEU	-	expression tag	UNP P0DTC2
A	1250	GLY	-	expression tag	UNP P0DTC2
A	1251	HIS	-	expression tag	UNP P0DTC2
A	1252	HIS	-	expression tag	UNP P0DTC2
A	1253	HIS	-	expression tag	UNP P0DTC2
A	1254	HIS	-	expression tag	UNP P0DTC2
A	1255	HIS	-	expression tag	UNP P0DTC2
A	1256	HIS	-	expression tag	UNP P0DTC2

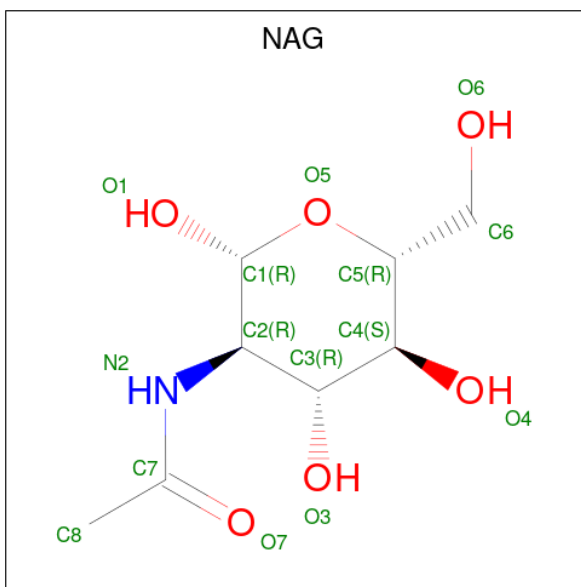
- Molecule 2 is a protein called P008_60 antibody, Heavy chain.

Mol	Chain	Residues	Atoms					AltConf	Trace
			Total	C	N	O	S		
2	H	222	1708	1093	281	327	7	0	0

- Molecule 3 is a protein called P008_60 antibody, Light chain.

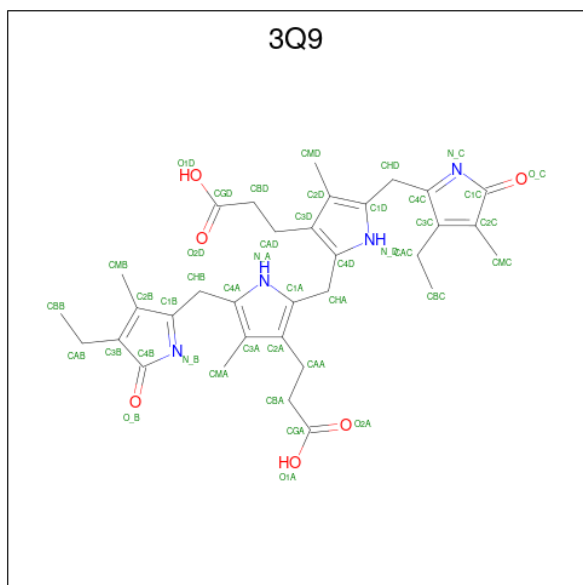
Mol	Chain	Residues	Atoms					AltConf	Trace
			Total	C	N	O	S		
3	L	192	1460	909	247	300	4	0	0

- Molecule 4 is 2-acetamido-2-deoxy-beta-D-glucofuranose (three-letter code: NAG) (formula: $C_8H_{15}NO_6$).



Mol	Chain	Residues	Atoms				AltConf
			Total	C	N	O	
4	A	1	112	64	8	40	0
4	A	1	112	64	8	40	0
4	A	1	112	64	8	40	0
4	A	1	112	64	8	40	0
4	A	1	112	64	8	40	0
4	A	1	112	64	8	40	0
4	A	1	112	64	8	40	0
4	A	1	112	64	8	40	0

- Molecule 5 is 3-[5-[(4-ethyl-3-methyl-5-oxidanylidene-pyrrol-2-yl)methyl]-2-[[5-[(3-ethyl-4-methyl-5-oxidanylidene-pyrrol-2-yl)methyl]-3-(3-hydroxy-3-oxopropyl)-4-methyl-1H-pyrrol-2-yl]methyl]-4-methyl-1H-pyrrol-3-yl]propanoic acid (three-letter code: 3Q9) (formula: $C_{33}H_{40}N_4O_6$).



Mol	Chain	Residues	Atoms				AltConf
			Total	C	N	O	
5	A	1	43	33	4	6	0

4 Experimental information

Property	Value	Source
EM reconstruction method	SINGLE PARTICLE	Depositor
Imposed symmetry	POINT, C1	Depositor
Number of particles used	166619	Depositor
Resolution determination method	FSC 0.143 CUT-OFF	Depositor
CTF correction method	PHASE FLIPPING AND AMPLITUDE CORRECTION	Depositor
Microscope	FEI TITAN KRIOS	Depositor
Voltage (kV)	300	Depositor
Electron dose ($e^-/\text{\AA}^2$)	50	Depositor
Minimum defocus (nm)	700	Depositor
Maximum defocus (nm)	3600	Depositor
Magnification	Not provided	
Image detector	GATAN K3 (6k x 4k)	Depositor
Maximum map value	1.842	Depositor
Minimum map value	-0.002	Depositor
Average map value	0.000	Depositor
Map value standard deviation	0.016	Depositor
Recommended contour level	0.03	Depositor
Map size (\AA)	374.0, 374.0, 374.0	wwPDB
Map dimensions	340, 340, 340	wwPDB
Map angles ($^\circ$)	90.0, 90.0, 90.0	wwPDB
Pixel spacing (\AA)	1.1, 1.1, 1.1	Depositor

5 Model quality [i](#)

5.1 Standard geometry [i](#)

Bond lengths and bond angles in the following residue types are not validated in this section: 3Q9, NAG

The Z score for a bond length (or angle) is the number of standard deviations the observed value is removed from the expected value. A bond length (or angle) with $|Z| > 5$ is considered an outlier worth inspection. RMSZ is the root-mean-square of all Z scores of the bond lengths (or angles).

Mol	Chain	Bond lengths		Bond angles	
		RMSZ	# Z >5	RMSZ	# Z >5
1	A	0.28	0/5340	0.53	0/7271
2	H	0.28	0/1754	0.54	0/2388
3	L	0.26	0/1488	0.57	0/2019
All	All	0.27	0/8582	0.54	0/11678

There are no bond length outliers.

There are no bond angle outliers.

There are no chirality outliers.

There are no planarity outliers.

5.2 Too-close contacts [i](#)

In the following table, the Non-H and H(model) columns list the number of non-hydrogen atoms and hydrogen atoms in the chain respectively. The H(added) column lists the number of hydrogen atoms added and optimized by MolProbity. The Clashes column lists the number of clashes within the asymmetric unit, whereas Symm-Clashes lists symmetry-related clashes.

Mol	Chain	Non-H	H(model)	H(added)	Clashes	Symm-Clashes
1	A	5206	0	5008	106	0
2	H	1708	0	1658	42	0
3	L	1460	0	1418	28	0
4	A	112	0	104	2	0
5	A	43	0	0	0	0
All	All	8529	0	8188	169	0

The all-atom clashscore is defined as the number of clashes found per 1000 atoms (including hydrogen atoms). The all-atom clashscore for this structure is 10.

All (169) close contacts within the same asymmetric unit are listed below, sorted by their clash

magnitude.

Atom-1	Atom-2	Interatomic distance (Å)	Clash overlap (Å)
1:A:99:ASN:ND2	1:A:177:MET:SD	2.44	0.90
2:H:38:ARG:NH1	2:H:90:ASP:OD1	2.11	0.83
1:A:53:ASP:OD1	1:A:54:LEU:N	2.13	0.81
1:A:312:ILE:HG22	1:A:598:ILE:HG12	1.63	0.80
1:A:358:ILE:HB	1:A:395:VAL:HB	1.65	0.78
3:L:60:PRO:HG2	3:L:62:ARG:HH21	1.49	0.77
1:A:457:ARG:NH1	1:A:459:SER:O	2.18	0.77
1:A:83:VAL:HG22	1:A:239:GLN:HE21	1.52	0.75
1:A:97:LYS:HG2	1:A:182:LYS:HB2	1.69	0.74
1:A:298:GLU:OE2	1:A:319:ARG:NH2	2.20	0.72
1:A:85:PRO:O	1:A:269:TYR:OH	2.07	0.72
2:H:70:ILE:HD11	2:H:79:LEU:HD21	1.74	0.69
3:L:38:GLN:HB3	3:L:48:LEU:HD11	1.74	0.69
1:A:617:CYS:SG	1:A:644:GLN:NE2	2.67	0.68
1:A:14:GLN:NE2	1:A:157:PHE:O	2.26	0.68
3:L:120:PHE:HB2	3:L:135:VAL:HB	1.75	0.68
1:A:137:ASN:C	1:A:137:ASN:HD22	1.97	0.67
1:A:34:ARG:NH1	1:A:219:GLY:O	2.28	0.67
1:A:394:ASN:HB2	1:A:516:GLU:HB3	1.75	0.66
1:A:439:ASN:OD1	1:A:440:ASN:N	2.28	0.66
3:L:149:GLN:HB3	3:L:197:GLU:HB2	1.79	0.64
3:L:33:TYR:CD2	3:L:93:GLY:HA3	2.34	0.63
2:H:202:SER:HA	2:H:205:LEU:HD12	1.81	0.63
2:H:209:THR:OG1	2:H:226:LYS:NZ	2.27	0.62
1:A:339:GLY:HA2	4:A:1301:NAG:H83	1.82	0.62
2:H:47:TRP:HD1	2:H:61:ALA:HB2	1.65	0.62
1:A:34:ARG:NE	1:A:191:GLU:OE2	2.27	0.61
1:A:552:LEU:HD13	1:A:585:LEU:HD23	1.83	0.61
1:A:546:LEU:HD11	1:A:573:THR:HG21	1.83	0.60
2:H:47:TRP:CZ2	2:H:50:VAL:HB	2.37	0.59
1:A:132:GLU:HB2	1:A:164:ASN:O	2.02	0.59
2:H:91:THR:HG23	2:H:126:THR:HA	1.85	0.59
2:H:175:LEU:HD21	2:H:198:VAL:HG11	1.84	0.59
1:A:523:THR:HG22	1:A:524:VAL:HG23	1.85	0.59
1:A:193:VAL:HG23	1:A:223:LEU:HD22	1.85	0.58
3:L:11:LEU:HD22	3:L:106:LEU:HG	1.85	0.58
2:H:36:TRP:HE1	2:H:79:LEU:CD2	2.16	0.58
3:L:33:TYR:HD2	3:L:93:GLY:HA3	1.69	0.58
1:A:96:GLU:OE2	1:A:101:ILE:N	2.34	0.58
2:H:69:THR:OG1	2:H:82:GLN:HB2	2.04	0.57
1:A:112:SER:N	1:A:134:GLN:OE1	2.34	0.57

Continued on next page...

Continued from previous page...

Atom-1	Atom-2	Interatomic distance (Å)	Clash overlap (Å)
1:A:165:ASN:OD1	4:A:1305:NAG:N2	2.37	0.57
1:A:336:CYS:N	1:A:361:CYS:SG	2.78	0.57
2:H:137:VAL:O	2:H:225:LYS:NZ	2.39	0.56
3:L:92:TYR:CD1	3:L:98:ILE:HD13	2.40	0.56
3:L:56:ALA:HB3	3:L:59:ILE:HD13	1.88	0.56
1:A:180:GLU:OE1	1:A:182:LYS:NZ	2.33	0.56
2:H:117:ASP:OD1	2:H:118:VAL:N	2.39	0.55
3:L:55:ARG:NH2	3:L:59:ILE:O	2.35	0.54
1:A:349:SER:OG	1:A:452:LEU:O	2.24	0.54
1:A:403:ARG:NH1	1:A:405:ASP:HB2	2.22	0.54
1:A:194:PHE:HE1	1:A:203:ILE:HG23	1.72	0.54
2:H:39:GLN:OE1	3:L:39:GLN:NE2	2.38	0.54
3:L:55:ARG:NH1	3:L:60:PRO:O	2.40	0.54
3:L:92:TYR:HA	3:L:98:ILE:HG21	1.89	0.54
1:A:675:GLN:HG2	1:A:676:THR:H	1.73	0.54
1:A:421:TYR:HA	1:A:461:LEU:HD23	1.91	0.53
1:A:598:ILE:HB	1:A:609:ALA:HB3	1.89	0.53
1:A:344:ALA:HB3	1:A:347:PHE:HE1	1.74	0.53
1:A:92:PHE:CE1	1:A:104:TRP:HZ2	2.26	0.53
1:A:666:ILE:HD11	1:A:672:ALA:HB2	1.90	0.53
2:H:113:TYR:CE1	3:L:32:SER:HB2	2.44	0.53
1:A:392:PHE:HD1	1:A:517:LEU:HD21	1.73	0.52
1:A:457:ARG:NH1	1:A:461:LEU:HD22	2.23	0.52
2:H:36:TRP:HE1	2:H:79:LEU:HD22	1.73	0.52
1:A:317:ASN:OD1	1:A:319:ARG:NH1	2.42	0.52
1:A:689:SER:O	1:A:690:GLN:NE2	2.42	0.52
1:A:89:GLY:HA3	1:A:270:LEU:HD12	1.92	0.51
1:A:83:VAL:HG22	1:A:239:GLN:NE2	2.22	0.51
1:A:561:PRO:HB3	2:H:114:TYR:CZ	2.46	0.51
1:A:569:ILE:HD12	1:A:569:ILE:H	1.75	0.51
2:H:47:TRP:HZ2	2:H:50:VAL:HB	1.74	0.51
2:H:132:THR:HA	2:H:162:PHE:HD2	1.74	0.51
2:H:62:ASP:HA	2:H:65:LYS:HB2	1.93	0.51
1:A:83:VAL:HG11	1:A:237:ARG:NH1	2.27	0.50
1:A:299:THR:HG22	1:A:597:VAL:HG11	1.92	0.50
2:H:210:TYR:H	2:H:226:LYS:HZ2	1.58	0.50
1:A:392:PHE:N	1:A:525:CYS:SG	2.84	0.50
2:H:40:ALA:HB3	2:H:43:LYS:HB2	1.93	0.50
3:L:6:GLN:OE1	3:L:104:THR:HG23	2.11	0.50
1:A:100:ILE:HG23	1:A:243:ALA:O	2.12	0.49
1:A:617:CYS:N	1:A:649:CYS:SG	2.85	0.49

Continued on next page...

Continued from previous page...

Atom-1	Atom-2	Interatomic distance (Å)	Clash overlap (Å)
1:A:310:LYS:HA	1:A:599:THR:HG23	1.94	0.49
2:H:38:ARG:NE	2:H:46:GLU:OE1	2.40	0.49
1:A:424:LYS:HD2	1:A:425:LEU:H	1.78	0.49
1:A:52:GLN:HG2	1:A:274:THR:OG1	2.13	0.48
1:A:146:HIS:CE1	1:A:148:ASN:HB2	2.49	0.48
1:A:194:PHE:CE1	1:A:203:ILE:HG23	2.48	0.48
3:L:34:LEU:HD12	3:L:90:GLN:O	2.12	0.48
1:A:224:GLU:OE2	1:A:225:PRO:HD2	2.14	0.48
1:A:139:PRO:HA	1:A:158:ARG:O	2.14	0.48
1:A:616:ASN:OD1	1:A:617:CYS:N	2.46	0.47
2:H:47:TRP:CZ3	3:L:98:ILE:HD11	2.49	0.47
2:H:162:PHE:CD1	2:H:163:PRO:HA	2.48	0.47
2:H:163:PRO:HB2	2:H:165:PRO:HD2	1.94	0.47
1:A:146:HIS:HE1	1:A:148:ASN:HB2	1.79	0.47
2:H:179:VAL:HG22	2:H:198:VAL:HG22	1.97	0.47
1:A:68:ILE:HG13	1:A:69:HIS:N	2.30	0.47
1:A:140:PHE:CZ	1:A:158:ARG:HD2	2.49	0.47
1:A:361:CYS:H	1:A:524:VAL:HG22	1.78	0.47
1:A:644:GLN:NE2	1:A:649:CYS:SG	2.87	0.47
1:A:646:ARG:HH11	1:A:668:ALA:HB1	1.79	0.47
1:A:203:ILE:HB	1:A:227:VAL:HG12	1.97	0.47
2:H:197:VAL:HG11	3:L:137:LEU:HD11	1.97	0.46
1:A:436:TRP:CZ2	1:A:509:ARG:HD2	2.50	0.46
1:A:330:PRO:HG3	1:A:579:PRO:HB3	1.98	0.46
1:A:361:CYS:N	1:A:524:VAL:HG22	2.30	0.46
1:A:65:PHE:HD2	1:A:80:ASP:HB3	1.81	0.46
1:A:244:LEU:HD13	1:A:258:TRP:HB2	1.98	0.46
1:A:79:PHE:CZ	1:A:242:LEU:HB2	2.50	0.46
1:A:92:PHE:CD1	1:A:104:TRP:HZ2	2.33	0.46
1:A:190:ARG:HG2	1:A:192:PHE:CE1	2.51	0.46
1:A:418:ILE:HD12	1:A:418:ILE:H	1.81	0.45
1:A:558:LYS:HG2	2:H:101:TYR:CZ	2.51	0.45
1:A:360:ASN:H	1:A:523:THR:CG2	2.29	0.45
3:L:36:TRP:CG	3:L:74:LEU:HD13	2.51	0.45
2:H:68:PHE:CE1	2:H:83:MET:HG2	2.51	0.45
1:A:490:PHE:CE2	1:A:492:LEU:HB2	2.52	0.45
1:A:53:ASP:HB3	1:A:55:PHE:CE2	2.52	0.45
1:A:95:THR:OG1	1:A:264:ALA:HB3	2.15	0.45
2:H:157:LEU:HD12	2:H:194:LEU:O	2.16	0.45
2:H:138:PHE:CE1	3:L:126:GLN:HA	2.52	0.44
2:H:184:ALA:HB2	2:H:194:LEU:HD23	1.99	0.44

Continued on next page...

Continued from previous page...

Atom-1	Atom-2	Interatomic distance (Å)	Clash overlap (Å)
2:H:73:ASP:OD2	2:H:76:LYS:NZ	2.30	0.44
3:L:34:LEU:HD23	3:L:52:THR:HG22	1.98	0.44
3:L:168:GLN:HB3	3:L:175:TYR:CE1	2.53	0.44
2:H:19:ARG:HG3	2:H:82:GLN:OE1	2.17	0.44
1:A:303:LEU:HD12	1:A:308:VAL:HG12	1.99	0.43
1:A:666:ILE:HD12	1:A:670:ILE:HG22	2.00	0.43
1:A:396:TYR:HB2	1:A:514:SER:HB2	2.00	0.43
1:A:697:MET:SD	1:A:697:MET:N	2.91	0.43
1:A:97:LYS:HE2	1:A:184:GLY:C	2.39	0.43
1:A:101:ILE:HG13	1:A:242:LEU:CD2	2.48	0.43
1:A:361:CYS:SG	1:A:362:VAL:N	2.92	0.43
1:A:490:PHE:HE2	1:A:492:LEU:HB2	1.83	0.43
3:L:127:LEU:O	3:L:185:LYS:NZ	2.51	0.43
2:H:104:PHE:HB3	2:H:111:THR:OG1	2.19	0.43
2:H:212:CYS:SG	2:H:225:LYS:HB3	2.59	0.43
2:H:167:THR:HB	2:H:215:ASN:HB2	2.01	0.43
3:L:139:ASN:OD1	3:L:140:ASN:ND2	2.52	0.43
1:A:97:LYS:HD3	1:A:185:ASN:O	2.19	0.42
2:H:103:ASP:OD1	2:H:104:PHE:N	2.53	0.42
1:A:424:LYS:HB3	1:A:463:PRO:HA	2.01	0.42
1:A:363:ALA:HB1	1:A:365:TYR:CD1	2.55	0.42
1:A:68:ILE:HG13	1:A:69:HIS:H	1.85	0.42
1:A:136:CYS:O	1:A:139:PRO:HD3	2.19	0.42
2:H:163:PRO:HD2	2:H:218:PRO:HG2	2.01	0.42
2:H:18:LEU:HB3	2:H:83:MET:CE	2.50	0.42
1:A:224:GLU:CD	1:A:225:PRO:HD2	2.40	0.42
1:A:398:ASP:HB2	1:A:512:VAL:CG1	2.50	0.42
1:A:146:HIS:CE1	1:A:148:ASN:HD22	2.39	0.41
1:A:342:PHE:CE1	1:A:511:VAL:HG11	2.55	0.41
1:A:105:ILE:HD11	1:A:239:GLN:OE1	2.21	0.41
1:A:439:ASN:O	1:A:443:SER:HB3	2.21	0.41
1:A:295:PRO:O	1:A:299:THR:HG23	2.21	0.41
1:A:317:ASN:OD1	1:A:318:PHE:N	2.54	0.41
1:A:403:ARG:HH12	1:A:405:ASP:HB2	1.86	0.41
1:A:65:PHE:HE2	1:A:82:PRO:HG3	1.84	0.41
3:L:6:GLN:CD	3:L:103:GLY:H	2.22	0.41
3:L:92:TYR:HD1	3:L:98:ILE:HD13	1.86	0.41
3:L:92:TYR:CG	3:L:92:TYR:O	2.74	0.41
1:A:470:THR:HG22	1:A:470:THR:O	2.21	0.41
1:A:44:ARG:HH22	1:A:49:HIS:CD2	2.39	0.40
1:A:169:GLU:O	1:A:169:GLU:HG2	2.22	0.40

Continued on next page...

Continued from previous page...

Atom-1	Atom-2	Interatomic distance (Å)	Clash overlap (Å)
2:H:30:SER:HB2	2:H:74:ASN:HD21	1.86	0.40
2:H:158:VAL:HG12	2:H:161:TYR:CD2	2.56	0.40
1:A:409:GLN:HA	1:A:414:GLN:NE2	2.36	0.40
3:L:128:LYS:HD2	3:L:128:LYS:HA	1.87	0.40
1:A:584:ILE:HG23	1:A:584:ILE:O	2.21	0.40

There are no symmetry-related clashes.

5.3 Torsion angles [i](#)

5.3.1 Protein backbone [i](#)

In the following table, the Percentiles column shows the percent Ramachandran outliers of the chain as a percentile score with respect to all PDB entries followed by that with respect to all EM entries.

The Analysed column shows the number of residues for which the backbone conformation was analysed, and the total number of residues.

Mol	Chain	Analysed	Favoured	Allowed	Outliers	Percentiles	
1	A	654/1287 (51%)	634 (97%)	20 (3%)	0	100	100
2	H	218/237 (92%)	211 (97%)	7 (3%)	0	100	100
3	L	186/216 (86%)	178 (96%)	8 (4%)	0	100	100
All	All	1058/1740 (61%)	1023 (97%)	35 (3%)	0	100	100

There are no Ramachandran outliers to report.

5.3.2 Protein sidechains [i](#)

In the following table, the Percentiles column shows the percent sidechain outliers of the chain as a percentile score with respect to all PDB entries followed by that with respect to all EM entries.

The Analysed column shows the number of residues for which the sidechain conformation was analysed, and the total number of residues.

Mol	Chain	Analysed	Rotameric	Outliers	Percentiles	
1	A	581/1116 (52%)	580 (100%)	1 (0%)	93	96
2	H	187/201 (93%)	187 (100%)	0	100	100

Continued on next page...

Continued from previous page...

Mol	Chain	Analysed	Rotameric	Outliers	Percentiles	
3	L	167/188 (89%)	165 (99%)	2 (1%)	71	84
All	All	935/1505 (62%)	932 (100%)	3 (0%)	92	95

All (3) residues with a non-rotameric sidechain are listed below:

Mol	Chain	Res	Type
1	A	137	ASN
3	L	91	GLN
3	L	109	LYS

Sometimes sidechains can be flipped to improve hydrogen bonding and reduce clashes. All (4) such sidechains are listed below:

Mol	Chain	Res	Type
1	A	148	ASN
1	A	239	GLN
1	A	644	GLN
3	L	140	ASN

5.3.3 RNA [i](#)

There are no RNA molecules in this entry.

5.4 Non-standard residues in protein, DNA, RNA chains [i](#)

There are no non-standard protein/DNA/RNA residues in this entry.

5.5 Carbohydrates [i](#)

There are no monosaccharides in this entry.

5.6 Ligand geometry [i](#)

9 ligands are modelled in this entry.

In the following table, the Counts columns list the number of bonds (or angles) for which Mogul statistics could be retrieved, the number of bonds (or angles) that are observed in the model and the number of bonds (or angles) that are defined in the Chemical Component Dictionary. The Link column lists molecule types, if any, to which the group is linked. The Z score for a bond

length (or angle) is the number of standard deviations the observed value is removed from the expected value. A bond length (or angle) with $|Z| > 2$ is considered an outlier worth inspection. RMSZ is the root-mean-square of all Z scores of the bond lengths (or angles).

Mol	Type	Chain	Res	Link	Bond lengths			Bond angles		
					Counts	RMSZ	# Z > 2	Counts	RMSZ	# Z > 2
4	NAG	A	1301	1	14,14,15	0.55	0	17,19,21	0.66	1 (5%)
4	NAG	A	1306	1	14,14,15	0.30	0	17,19,21	0.52	0
4	NAG	A	1307	1	14,14,15	0.49	0	17,19,21	0.53	0
4	NAG	A	1303	1	14,14,15	0.25	0	17,19,21	0.48	0
4	NAG	A	1302	1	14,14,15	0.18	0	17,19,21	0.46	0
4	NAG	A	1305	1	14,14,15	0.31	0	17,19,21	0.50	0
5	3Q9	A	1309	-	40,46,46	4.78	14 (35%)	38,67,67	1.92	8 (21%)
4	NAG	A	1308	1	14,14,15	0.23	0	17,19,21	0.45	0
4	NAG	A	1304	1	14,14,15	0.21	0	17,19,21	0.46	0

In the following table, the Chirals column lists the number of chiral outliers, the number of chiral centers analysed, the number of these observed in the model and the number defined in the Chemical Component Dictionary. Similar counts are reported in the Torsion and Rings columns. '-' means no outliers of that kind were identified.

Mol	Type	Chain	Res	Link	Chirals	Torsions	Rings
4	NAG	A	1301	1	-	1/6/23/26	0/1/1/1
4	NAG	A	1306	1	-	3/6/23/26	0/1/1/1
4	NAG	A	1307	1	-	2/6/23/26	0/1/1/1
4	NAG	A	1303	1	-	2/6/23/26	0/1/1/1
4	NAG	A	1302	1	-	4/6/23/26	0/1/1/1
4	NAG	A	1305	1	-	2/6/23/26	0/1/1/1
5	3Q9	A	1309	-	-	13/22/58/58	0/4/4/4
4	NAG	A	1308	1	-	0/6/23/26	0/1/1/1
4	NAG	A	1304	1	-	0/6/23/26	0/1/1/1

All (14) bond length outliers are listed below:

Mol	Chain	Res	Type	Atoms	Z	Observed(Å)	Ideal(Å)
5	A	1309	3Q9	CHA-C4D	-17.70	1.38	1.51
5	A	1309	3Q9	CHA-C1A	-13.72	1.41	1.51
5	A	1309	3Q9	CHB-C1B	-12.15	1.37	1.50
5	A	1309	3Q9	CHD-C4C	-11.94	1.37	1.50
5	A	1309	3Q9	CBB-CAB	-4.59	1.31	1.51
5	A	1309	3Q9	CBC-CAC	-4.56	1.31	1.51
5	A	1309	3Q9	C3D-C4D	4.43	1.45	1.39
5	A	1309	3Q9	O2A-CGA	2.74	1.31	1.22

Continued on next page...

Continued from previous page...

Mol	Chain	Res	Type	Atoms	Z	Observed(Å)	Ideal(Å)
5	A	1309	3Q9	O2D-CGD	2.72	1.31	1.22
5	A	1309	3Q9	O1D-CGD	-2.67	1.21	1.30
5	A	1309	3Q9	O1A-CGA	-2.65	1.21	1.30
5	A	1309	3Q9	C3C-C4C	2.57	1.50	1.43
5	A	1309	3Q9	C2D-C1D	2.41	1.45	1.42
5	A	1309	3Q9	C2A-C1A	2.13	1.42	1.39

All (9) bond angle outliers are listed below:

Mol	Chain	Res	Type	Atoms	Z	Observed(°)	Ideal(°)
5	A	1309	3Q9	CBC-CAC-C3C	5.84	128.53	112.43
5	A	1309	3Q9	CBB-CAB-C3B	5.61	127.89	112.43
5	A	1309	3Q9	C4B-N-B-C1B	3.25	110.90	105.67
5	A	1309	3Q9	C1C-N-C-C4C	3.12	110.69	105.67
5	A	1309	3Q9	O2A-CGA-CBA	-2.98	113.51	123.08
5	A	1309	3Q9	O2D-CGD-CBD	-2.96	113.56	123.08
5	A	1309	3Q9	O1A-CGA-CBA	2.80	123.04	114.03
5	A	1309	3Q9	O1D-CGD-CBD	2.76	122.91	114.03
4	A	1301	NAG	C1-O5-C5	2.04	114.96	112.19

There are no chirality outliers.

All (27) torsion outliers are listed below:

Mol	Chain	Res	Type	Atoms
5	A	1309	3Q9	C2D-C1D-CHD-C4C
5	A	1309	3Q9	C2A-C1A-CHA-C4D
5	A	1309	3Q9	C4B-C3B-CAB-CBB
5	A	1309	3Q9	C2B-C3B-CAB-CBB
4	A	1302	NAG	C4-C5-C6-O6
5	A	1309	3Q9	C2C-C3C-CAC-CBC
4	A	1302	NAG	O5-C5-C6-O6
4	A	1302	NAG	C8-C7-N2-C2
4	A	1302	NAG	O7-C7-N2-C2
4	A	1303	NAG	O5-C5-C6-O6
5	A	1309	3Q9	C4C-C3C-CAC-CBC
4	A	1306	NAG	O5-C5-C6-O6
4	A	1303	NAG	C4-C5-C6-O6
4	A	1305	NAG	O5-C5-C6-O6
4	A	1307	NAG	C4-C5-C6-O6
4	A	1306	NAG	C4-C5-C6-O6
4	A	1307	NAG	O5-C5-C6-O6
5	A	1309	3Q9	C3C-C4C-CHD-C1D

Continued on next page...

Continued from previous page...

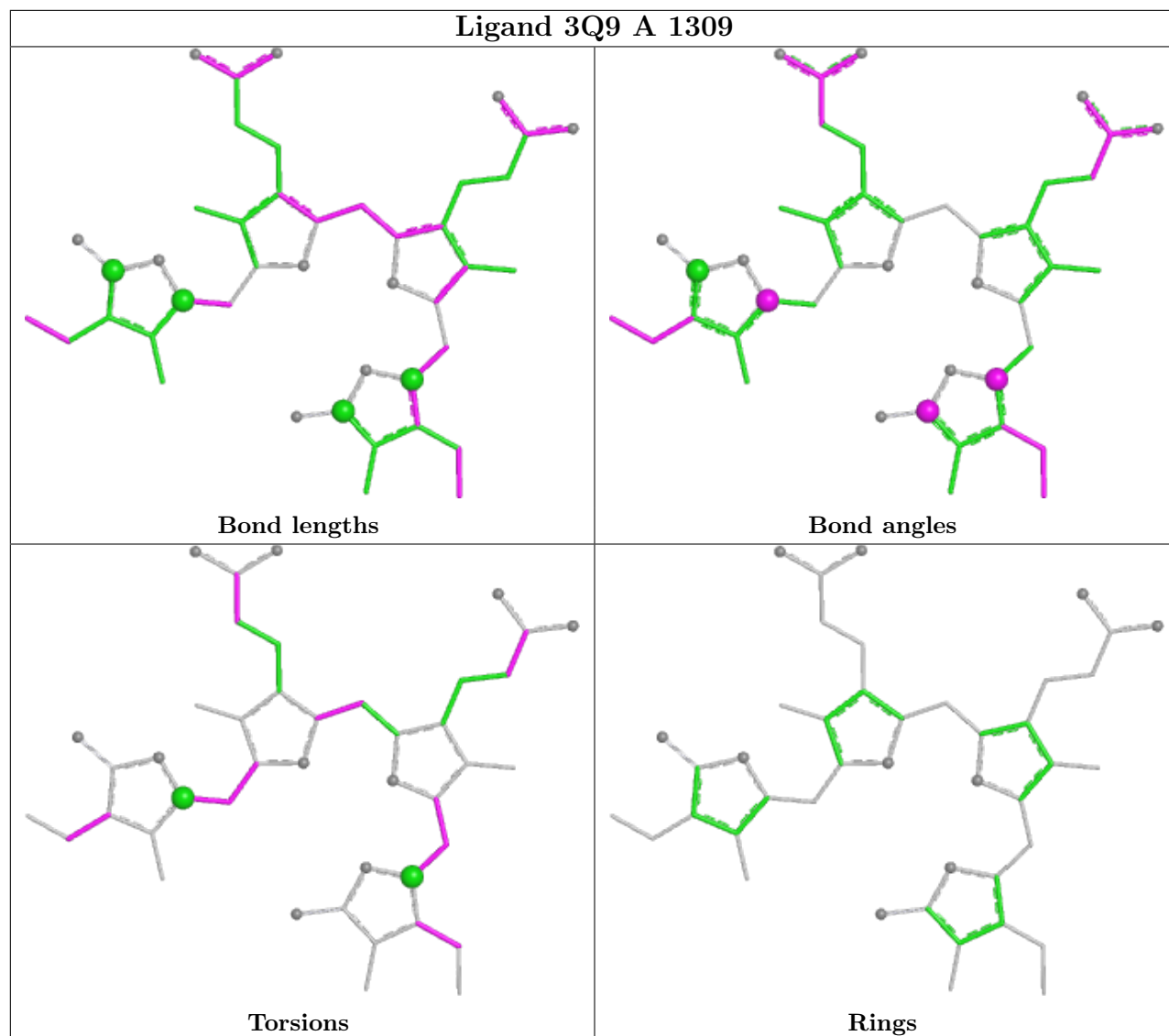
Mol	Chain	Res	Type	Atoms
5	A	1309	3Q9	C2B-C1B-CHB-C4A
4	A	1301	NAG	C3-C2-N2-C7
4	A	1306	NAG	C3-C2-N2-C7
5	A	1309	3Q9	CAA-CBA-CGA-O2A
5	A	1309	3Q9	CAD-CBD-CGD-O2D
5	A	1309	3Q9	CAA-CBA-CGA-O1A
5	A	1309	3Q9	CAD-CBD-CGD-O1D
5	A	1309	3Q9	C3A-C4A-CHB-C1B
4	A	1305	NAG	C4-C5-C6-O6

There are no ring outliers.

2 monomers are involved in 2 short contacts:

Mol	Chain	Res	Type	Clashes	Symm-Clashes
4	A	1301	NAG	1	0
4	A	1305	NAG	1	0

The following is a two-dimensional graphical depiction of Mogul quality analysis of bond lengths, bond angles, torsion angles, and ring geometry for all instances of the Ligand of Interest. In addition, ligands with molecular weight > 250 and outliers as shown on the validation Tables will also be included. For torsion angles, if less than 5% of the Mogul distribution of torsion angles is within 10 degrees of the torsion angle in question, then that torsion angle is considered an outlier. Any bond that is central to one or more torsion angles identified as an outlier by Mogul will be highlighted in the graph. For rings, the root-mean-square deviation (RMSD) between the ring in question and similar rings identified by Mogul is calculated over all ring torsion angles. If the average RMSD is greater than 60 degrees and the minimal RMSD between the ring in question and any Mogul-identified rings is also greater than 60 degrees, then that ring is considered an outlier. The outliers are highlighted in purple. The color gray indicates Mogul did not find sufficient equivalents in the CSD to analyse the geometry.



5.7 Other polymers [\(i\)](#)

There are no such residues in this entry.

5.8 Polymer linkage issues [\(i\)](#)

There are no chain breaks in this entry.

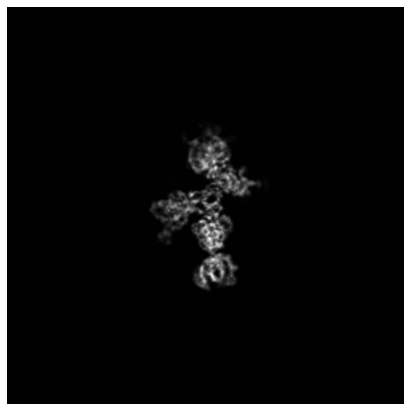
6 Map visualisation [i](#)

This section contains visualisations of the EMDB entry EMD-14591. These allow visual inspection of the internal detail of the map and identification of artifacts.

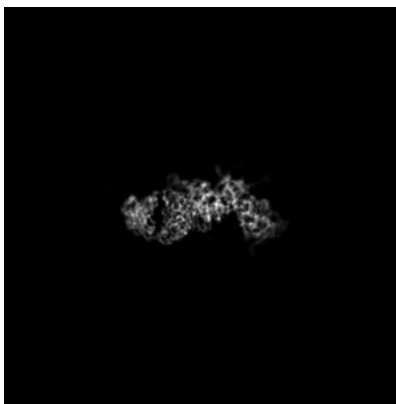
Images derived from a raw map, generated by summing the deposited half-maps, are presented below the corresponding image components of the primary map to allow further visual inspection and comparison with those of the primary map.

6.1 Orthogonal projections [i](#)

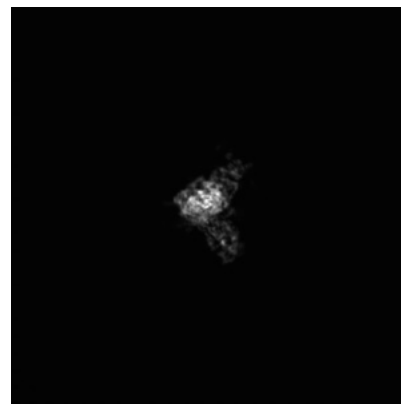
6.1.1 Primary map



X

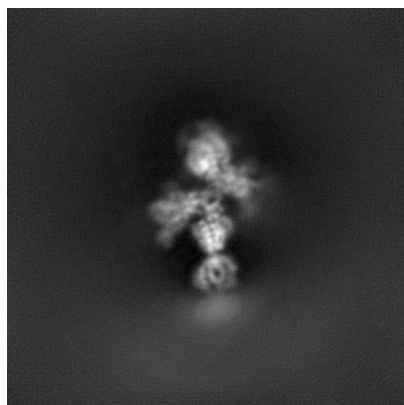


Y

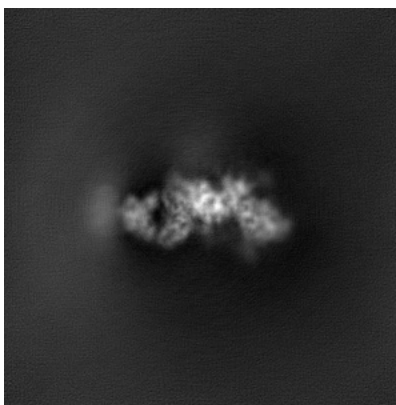


Z

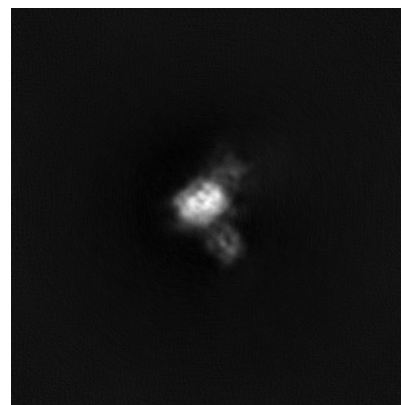
6.1.2 Raw map



X



Y



Z

The images above show the map projected in three orthogonal directions.

6.2 Central slices [i](#)

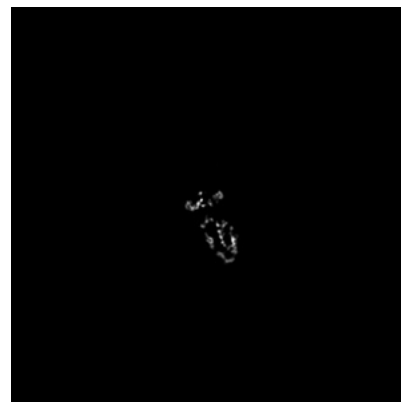
6.2.1 Primary map



X Index: 170

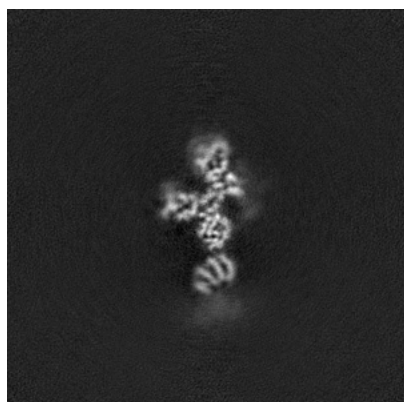


Y Index: 170

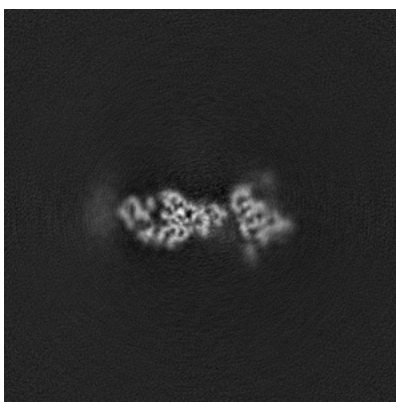


Z Index: 170

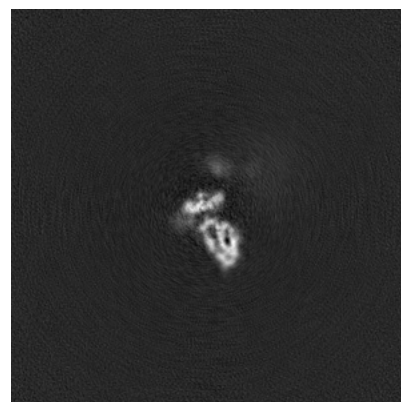
6.2.2 Raw map



X Index: 170



Y Index: 170



Z Index: 170

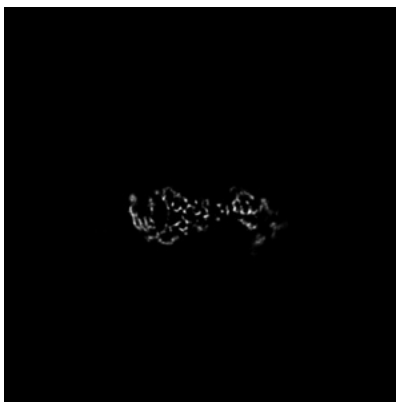
The images above show central slices of the map in three orthogonal directions.

6.3 Largest variance slices [i](#)

6.3.1 Primary map



X Index: 170

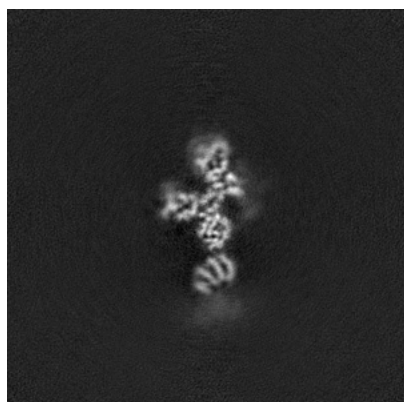


Y Index: 175

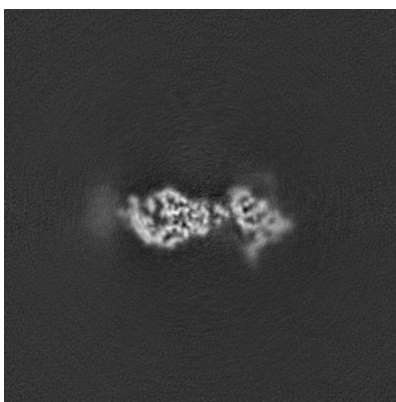


Z Index: 173

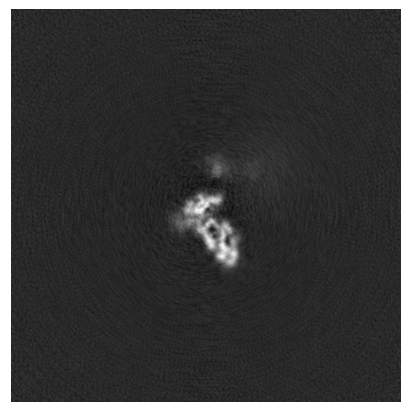
6.3.2 Raw map



X Index: 170



Y Index: 173

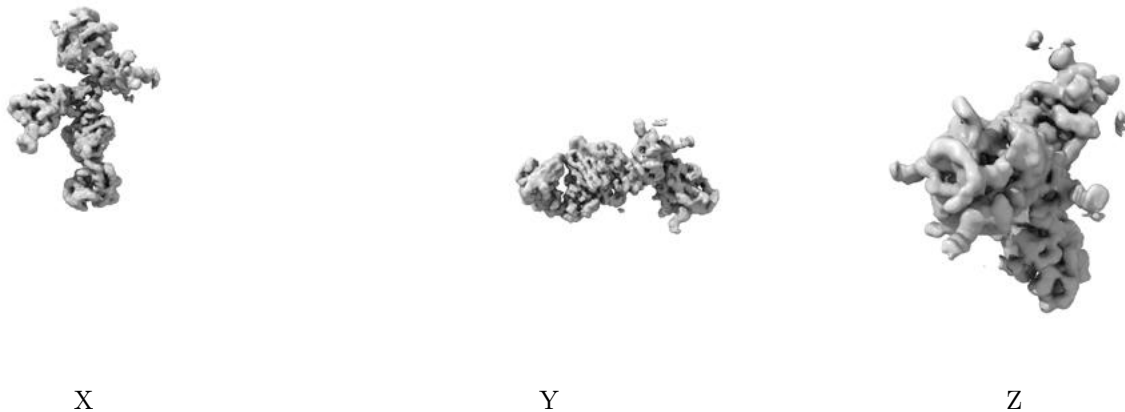


Z Index: 172

The images above show the largest variance slices of the map in three orthogonal directions.

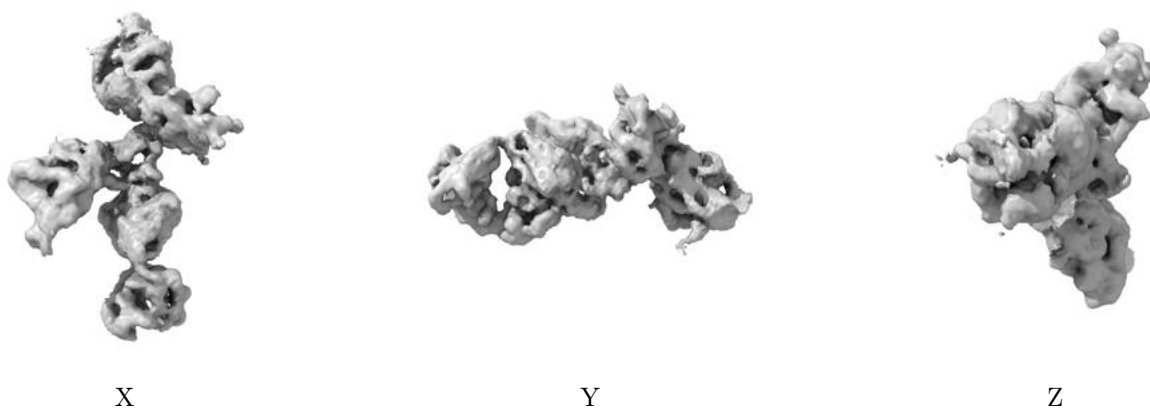
6.4 Orthogonal surface views [i](#)

6.4.1 Primary map



The images above show the 3D surface view of the map at the recommended contour level 0.03. These images, in conjunction with the slice images, may facilitate assessment of whether an appropriate contour level has been provided.

6.4.2 Raw map



These images show the 3D surface of the raw map. The raw map's contour level was selected so that its surface encloses the same volume as the primary map does at its recommended contour level.

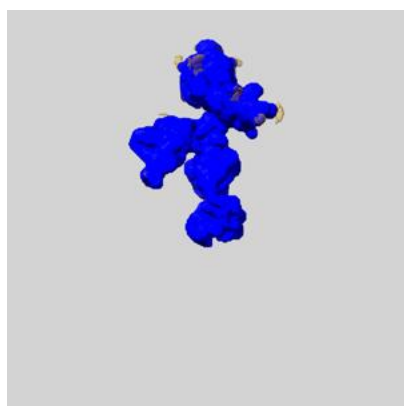
6.5 Mask visualisation [i](#)

This section shows the 3D surface view of the primary map at 50% transparency overlaid with the specified mask at 0% transparency

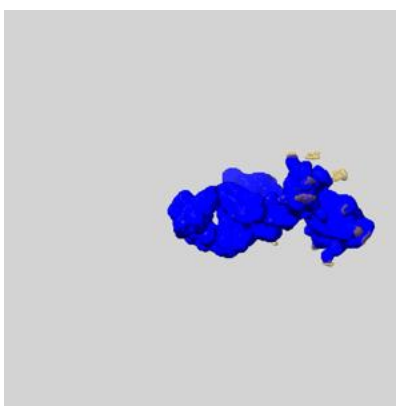
A mask typically either:

- Encompasses the whole structure
- Separates out a domain, a functional unit, a monomer or an area of interest from a larger structure

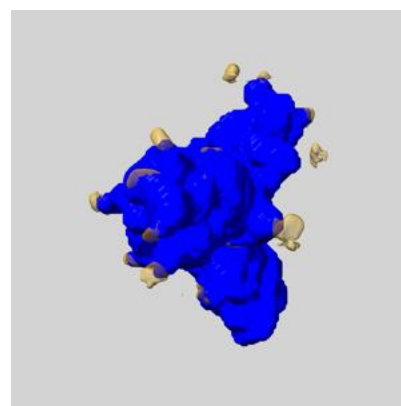
6.5.1 emd_14591_msk_1.map [i](#)



X



Y

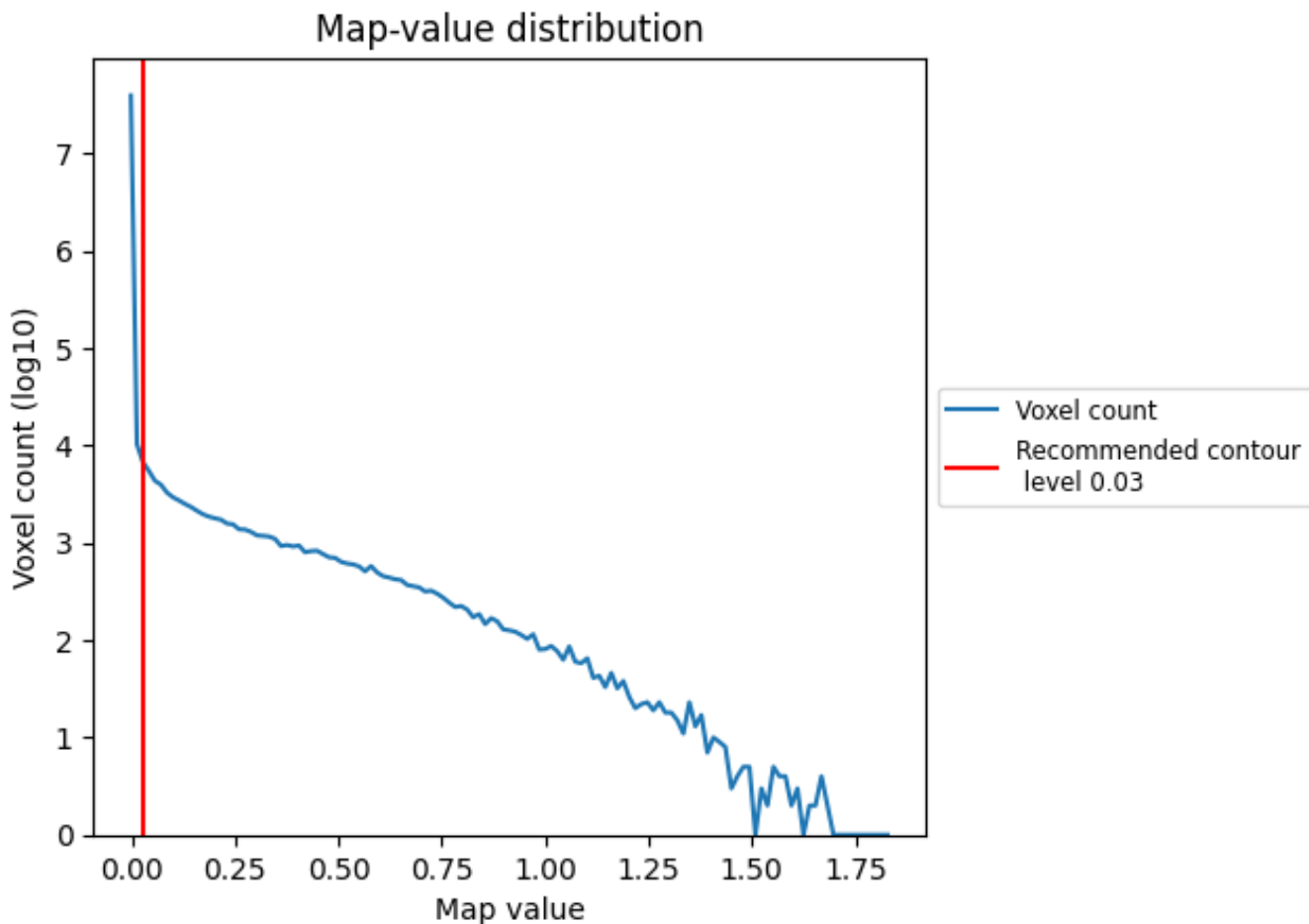


Z

7 Map analysis [i](#)

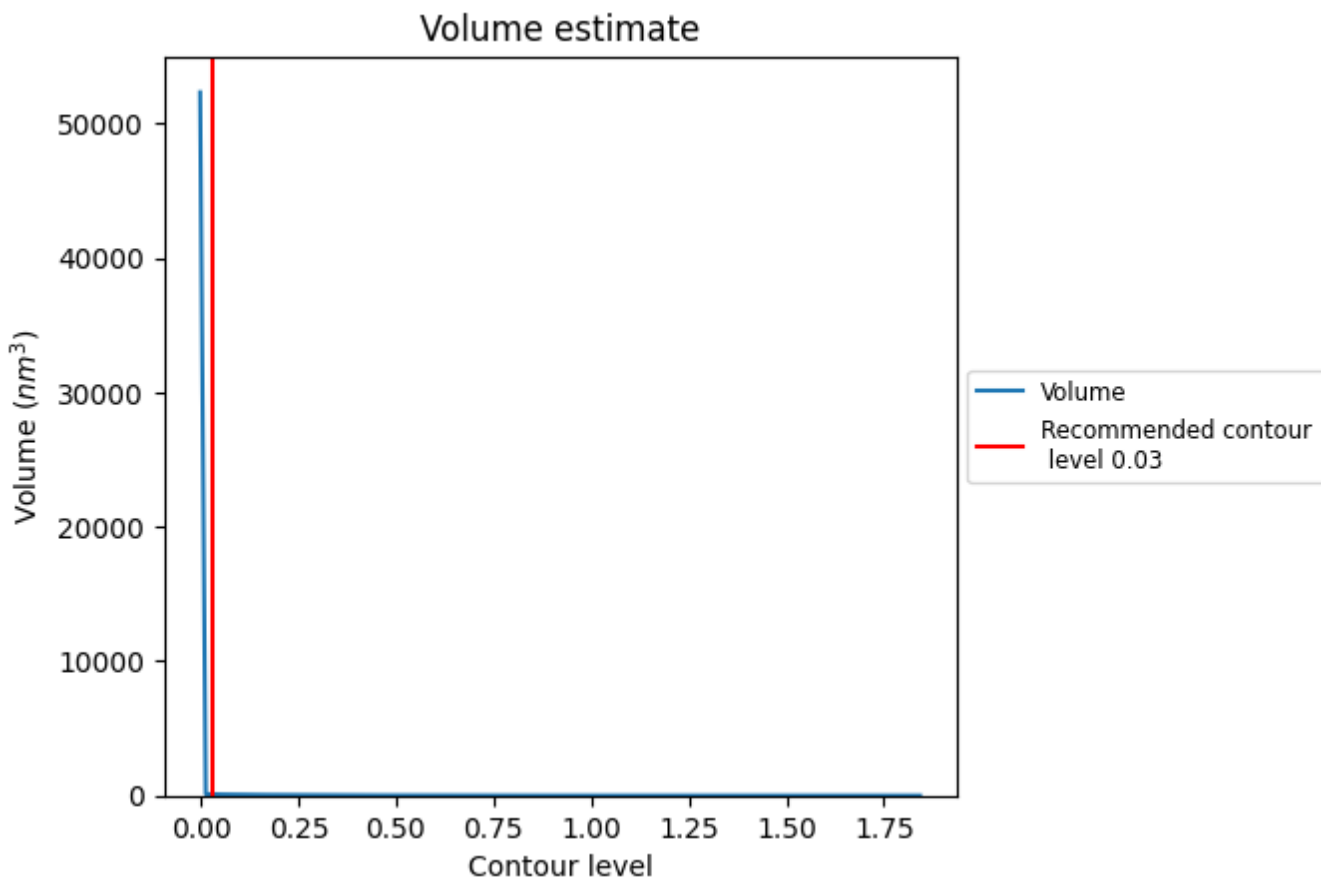
This section contains the results of statistical analysis of the map.

7.1 Map-value distribution [i](#)



The map-value distribution is plotted in 128 intervals along the x-axis. The y-axis is logarithmic. A spike in this graph at zero usually indicates that the volume has been masked.

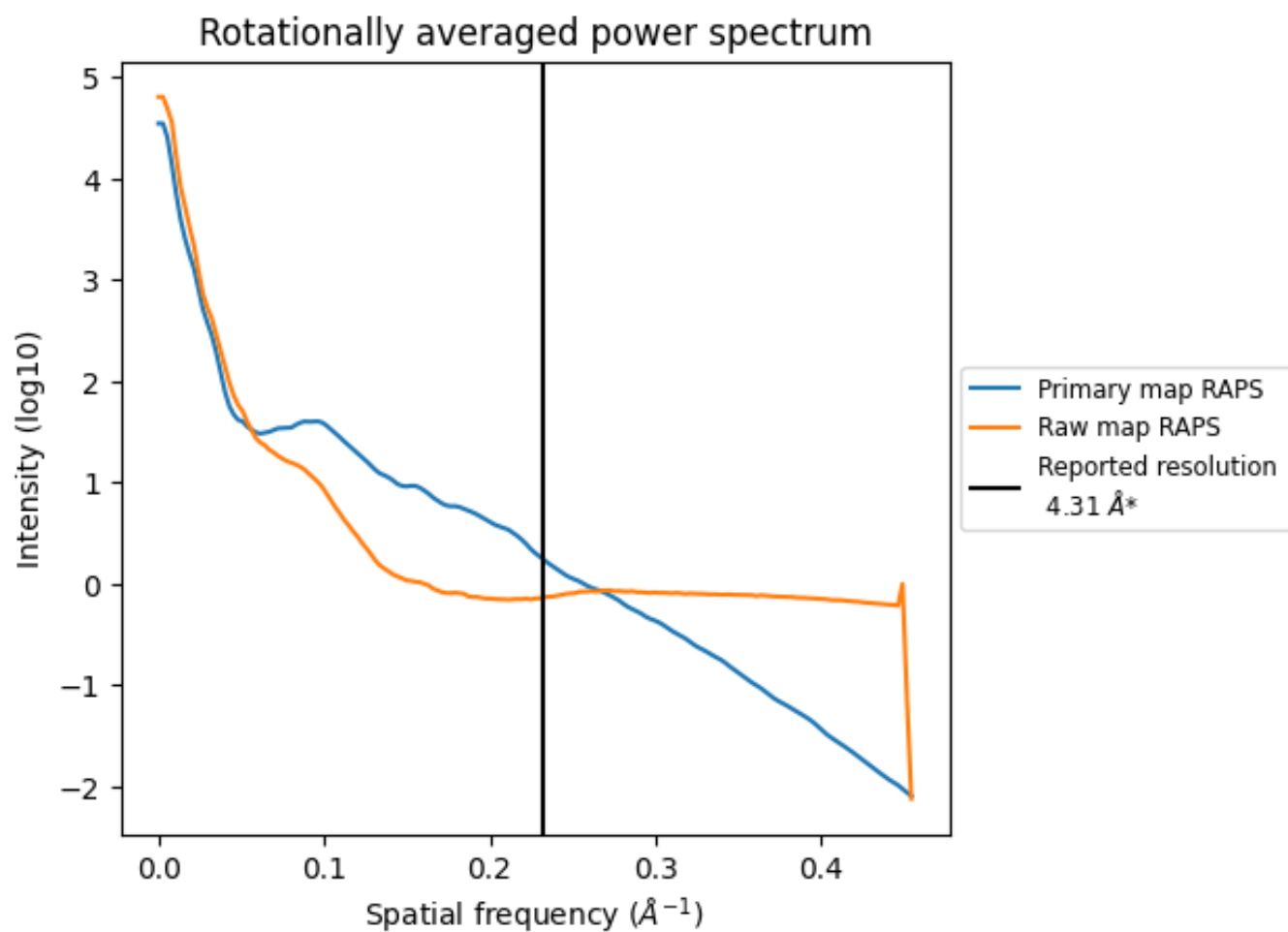
7.2 Volume estimate [i](#)



The volume at the recommended contour level is 99 nm³; this corresponds to an approximate mass of 89 kDa.

The volume estimate graph shows how the enclosed volume varies with the contour level. The recommended contour level is shown as a vertical line and the intersection between the line and the curve gives the volume of the enclosed surface at the given level.

7.3 Rotationally averaged power spectrum i

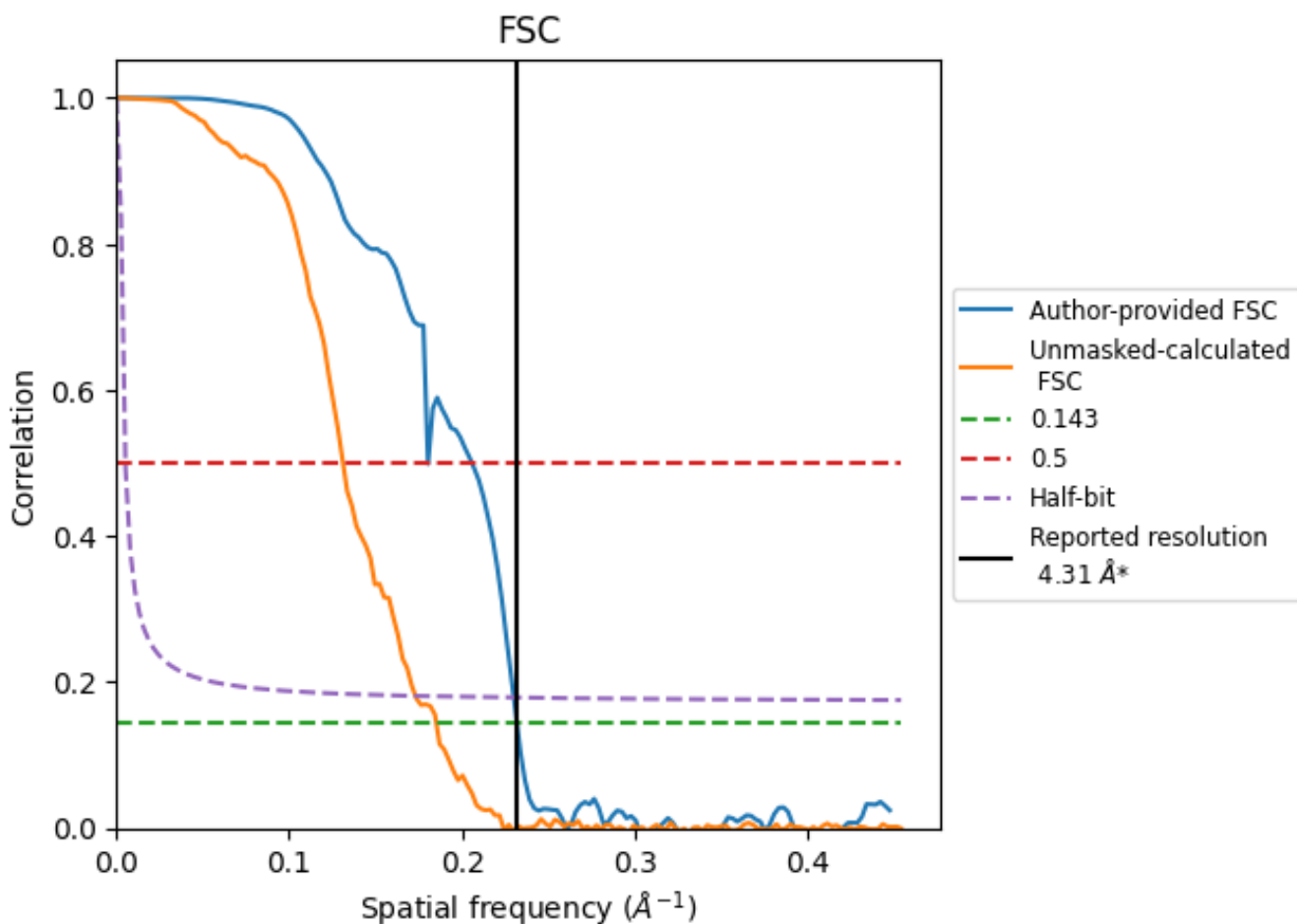


*Reported resolution corresponds to spatial frequency of 0.232 Å⁻¹

8 Fourier-Shell correlation [i](#)

Fourier-Shell Correlation (FSC) is the most commonly used method to estimate the resolution of single-particle and subtomogram-averaged maps. The shape of the curve depends on the imposed symmetry, mask and whether or not the two 3D reconstructions used were processed from a common reference. The reported resolution is shown as a black line. A curve is displayed for the half-bit criterion in addition to lines showing the 0.143 gold standard cut-off and 0.5 cut-off.

8.1 FSC [i](#)



*Reported resolution corresponds to spatial frequency of 0.232 \AA^{-1}

8.2 Resolution estimates [i](#)

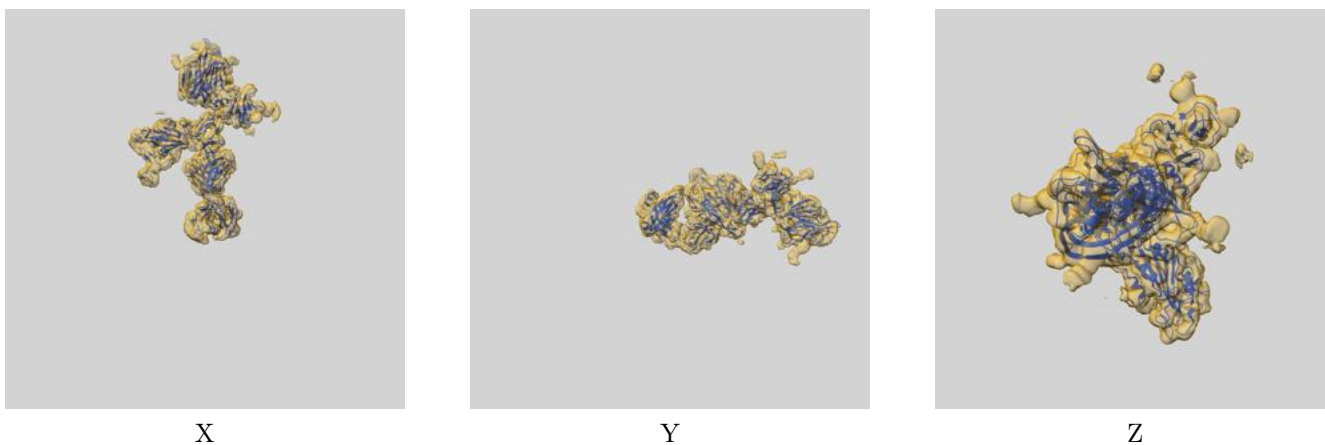
Resolution estimate (Å)	Estimation criterion (FSC cut-off)		
	0.143	0.5	Half-bit
Reported by author	4.31	-	-
Author-provided FSC curve	4.31	5.54	4.34
Unmasked-calculated*	5.40	7.62	5.77

*Resolution estimate based on FSC curve calculated by comparison of deposited half-maps. The value from deposited half-maps intersecting FSC 0.143 CUT-OFF 5.40 differs from the reported value 4.31 by more than 10 %

9 Map-model fit [i](#)

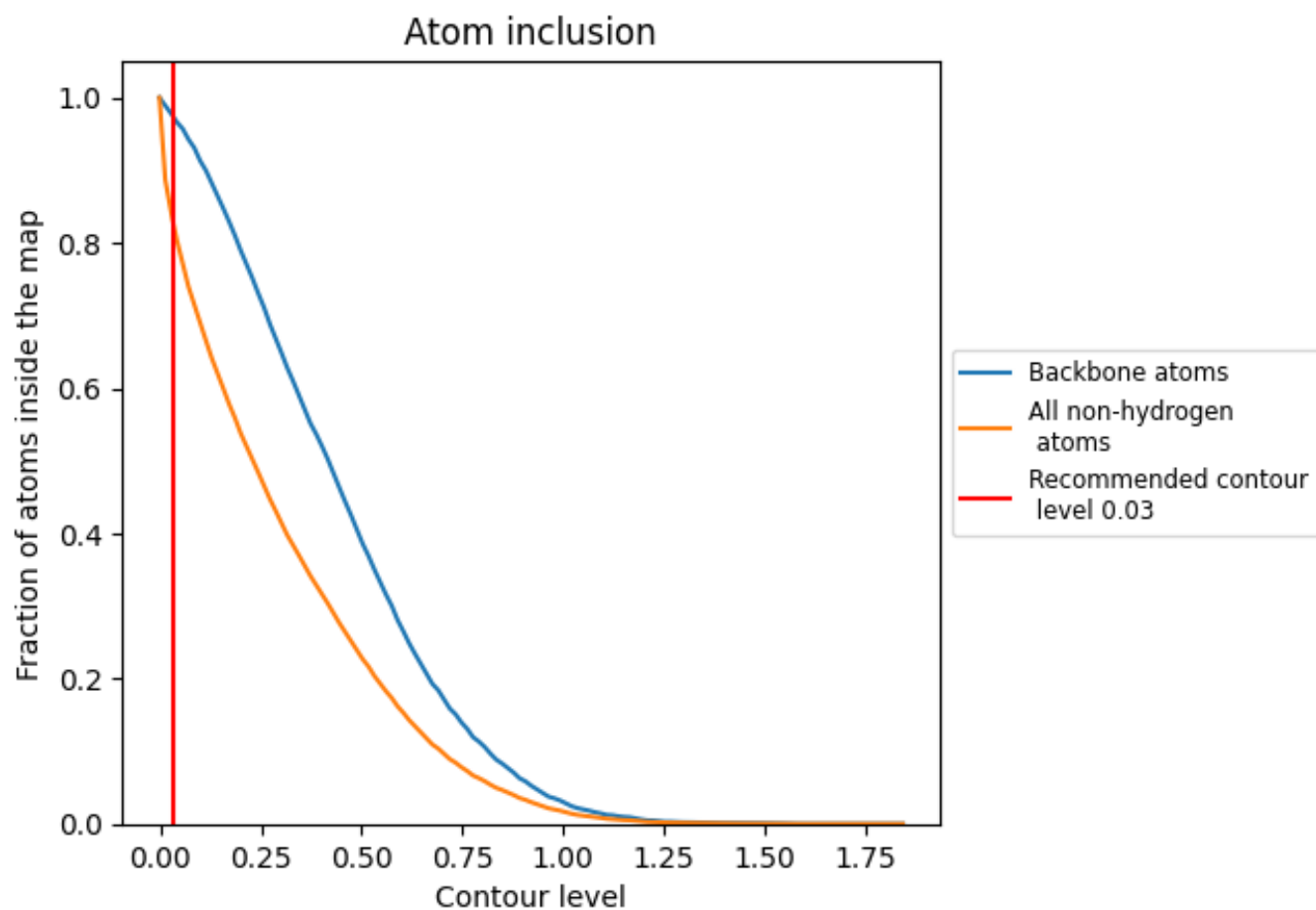
This section contains information regarding the fit between EMDB map EMD-14591 and PDB model 7ZBU. Per-residue inclusion information can be found in section 3 on page 8.

9.1 Map-model overlay [i](#)



The images above show the 3D surface view of the map at the recommended contour level 0.03 at 50% transparency in yellow overlaid with a ribbon representation of the model coloured in blue. These images allow for the visual assessment of the quality of fit between the atomic model and the map.

9.2 Atom inclusion [i](#)



At the recommended contour level, 98% of all backbone atoms, 83% of all non-hydrogen atoms, are inside the map.