



Full wwPDB X-ray Structure Validation Report ⓘ

Oct 30, 2023 – 09:01 PM JST

PDB ID : 4ZBV
Title : Structural studies on a non-toxic homologue of type II RIPs from Momordica charantia (bitter gourd) in complex with benzyl T-antigen
Authors : Chandran, T.; Sharma, A.; Vijayan, M.
Deposited on : 2015-04-15
Resolution : 2.00 Å(reported)

This is a Full wwPDB X-ray Structure Validation Report for a publicly released PDB entry.

We welcome your comments at validation@mail.wwpdb.org

A user guide is available at

<https://www.wwpdb.org/validation/2017/XrayValidationReportHelp>

with specific help available everywhere you see the ⓘ symbol.

The types of validation reports are described at

<http://www.wwpdb.org/validation/2017/FAQs#types>.

The following versions of software and data (see [references ⓘ](#)) were used in the production of this report:

MolProbity : 4.02b-467
Mogul : 1.8.5 (274361), CSD as541be (2020)
Xtriage (Phenix) : 1.13
EDS : 2.36
Percentile statistics : 20191225.v01 (using entries in the PDB archive December 25th 2019)
Refmac : 5.8.0158
CCP4 : 7.0.044 (Gargrove)
Ideal geometry (proteins) : Engh & Huber (2001)
Ideal geometry (DNA, RNA) : Parkinson et al. (1996)
Validation Pipeline (wwPDB-VP) : 2.36

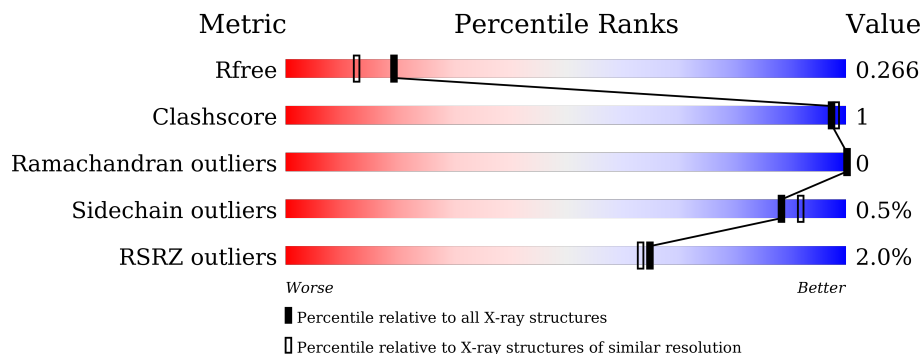
1 Overall quality at a glance

The following experimental techniques were used to determine the structure:

X-RAY DIFFRACTION

The reported resolution of this entry is 2.00 Å.

Percentile scores (ranging between 0-100) for global validation metrics of the entry are shown in the following graphic. The table shows the number of entries on which the scores are based.



Metric	Whole archive (#Entries)	Similar resolution (#Entries, resolution range(Å))
R_{free}	130704	8085 (2.00-2.00)
Clashscore	141614	9178 (2.00-2.00)
Ramachandran outliers	138981	9054 (2.00-2.00)
Sidechain outliers	138945	9053 (2.00-2.00)
RSRZ outliers	127900	7900 (2.00-2.00)

The table below summarises the geometric issues observed across the polymeric chains and their fit to the electron density. The red, orange, yellow and green segments of the lower bar indicate the fraction of residues that contain outliers for ≥ 3 , 2, 1 and 0 types of geometric quality criteria respectively. A grey segment represents the fraction of residues that are not modelled. The numeric value for each fraction is indicated below the corresponding segment, with a dot representing fractions $\leq 5\%$. The upper red bar (where present) indicates the fraction of residues that have poor fit to the electron density. The numeric value is given above the bar.

Mol	Chain	Length	Quality of chain
1	A	247	 99%
2	B	261	 97%
3	C	2	 100%
4	D	2	 100%

2 Entry composition [i](#)

There are 13 unique types of molecules in this entry. The entry contains 4391 atoms, of which 0 are hydrogens and 0 are deuteriums.

In the tables below, the ZeroOcc column contains the number of atoms modelled with zero occupancy, the AltConf column contains the number of residues with at least one atom in alternate conformation and the Trace column contains the number of residues modelled with at most 2 atoms.

- Molecule 1 is a protein called rRNA N-glycosidase.

Mol	Chain	Residues	Atoms					ZeroOcc	AltConf	Trace
			Total	C	N	O	S			
1	A	247	1936	1245	308	372	11	0	0	0

- Molecule 2 is a protein called rRNA N-glycosidase.

Mol	Chain	Residues	Atoms					ZeroOcc	AltConf	Trace
			Total	C	N	O	S			
2	B	261	2009	1242	353	400	14	0	0	0

- Molecule 3 is an oligosaccharide called alpha-L-fucopyranose-(1-3)-2-acetamido-2-deoxy-beta-D-glucopyranose.



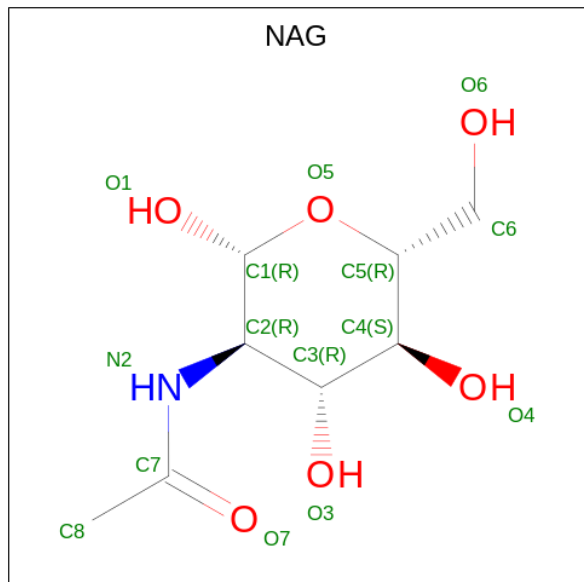
Mol	Chain	Residues	Atoms				ZeroOcc	AltConf	Trace
			Total	C	N	O			
3	C	2	24	14	1	9	0	0	0

- Molecule 4 is an oligosaccharide called 2-acetamido-2-deoxy-beta-D-glucopyranose-(1-4)-2-acetamido-2-deoxy-beta-D-glucopyranose.



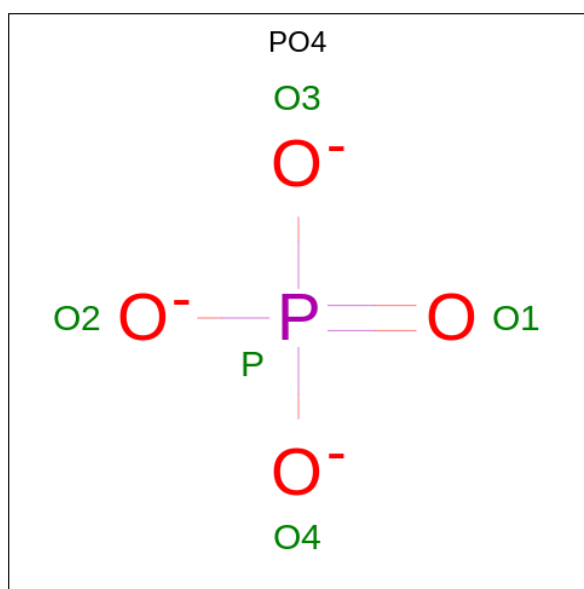
Mol	Chain	Residues	Atoms				ZeroOcc	AltConf	Trace
			Total	C	N	O			
4	D	2	28	16	2	10	0	0	0

- Molecule 5 is 2-acetamido-2-deoxy-beta-D-glucopyranose (three-letter code: NAG) (formula: $C_8H_{15}NO_6$).



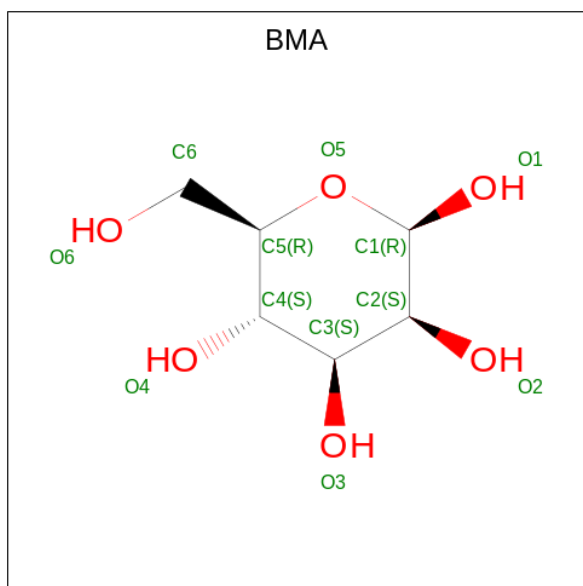
Mol	Chain	Residues	Atoms				ZeroOcc	AltConf
			Total	C	N	O		
5	A	1	14	8	1	5	0	0
5	B	1	14	8	1	5	0	0

- Molecule 6 is PHOSPHATE ION (three-letter code: PO4) (formula: O_4P).



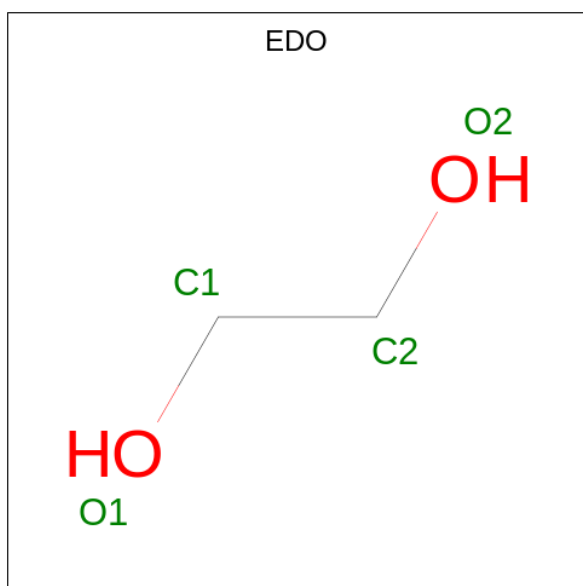
Mol	Chain	Residues	Atoms			ZeroOcc	AltConf
6	A	1	Total	O	P	0	0
			5	4	1		

- Molecule 7 is beta-D-mannopyranose (three-letter code: BMA) (formula: $C_6H_{12}O_6$).



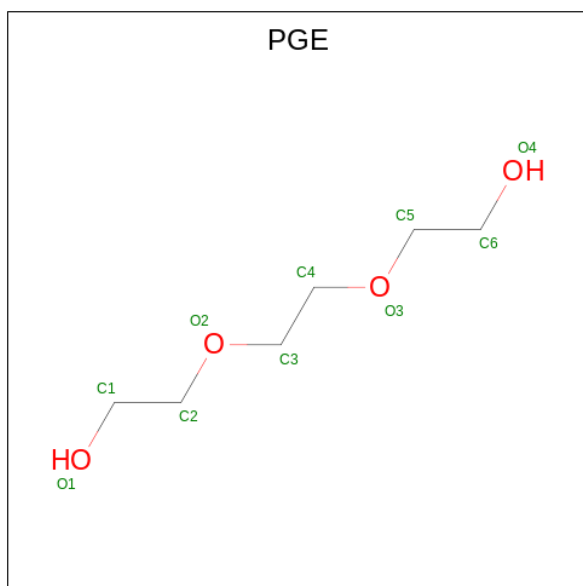
Mol	Chain	Residues	Atoms			ZeroOcc	AltConf
7	B	1	Total	C	O	0	0
			11	6	5		

- Molecule 8 is 1,2-ETHANEDIOL (three-letter code: EDO) (formula: $C_2H_6O_2$).



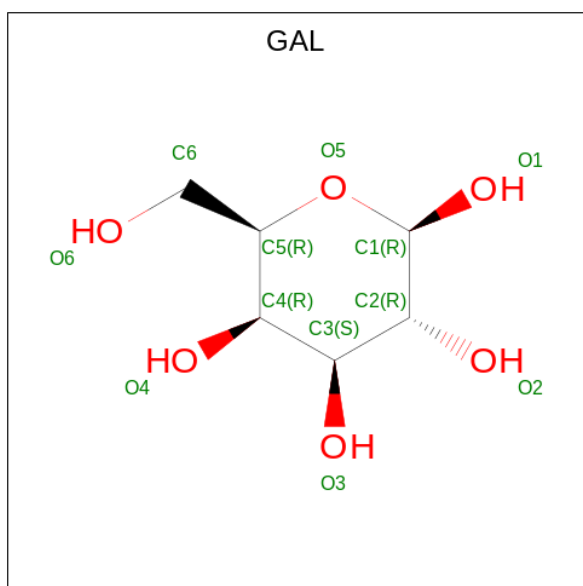
Mol	Chain	Residues	Atoms			ZeroOcc	AltConf
8	B	1	Total	C	O	0	0
			4	2	2		

- Molecule 9 is TRIETHYLENE GLYCOL (three-letter code: PGE) (formula: $C_6H_{14}O_4$).



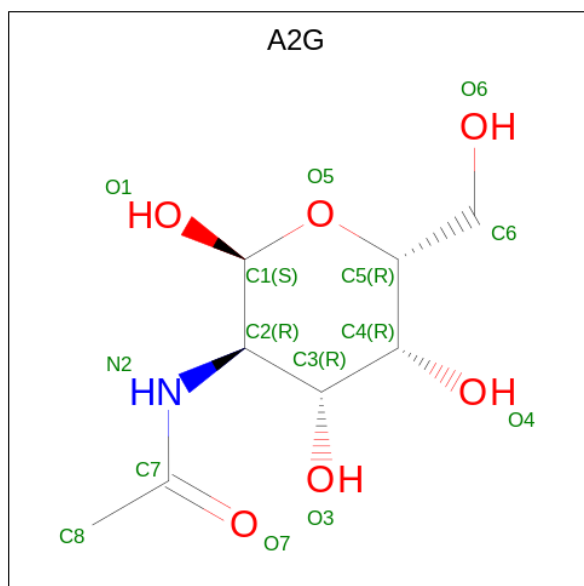
Mol	Chain	Residues	Atoms			ZeroOcc	AltConf
9	B	1	Total	C	O	0	0
			10	6	4		

- Molecule 10 is beta-D-galactopyranose (three-letter code: GAL) (formula: $C_6H_{12}O_6$).



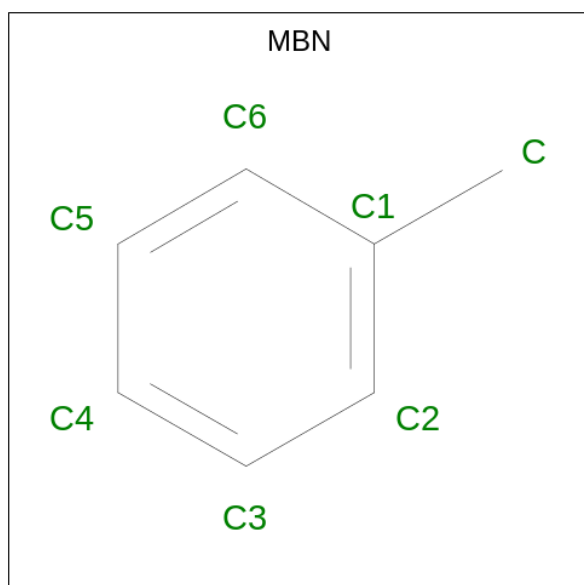
Mol	Chain	Residues	Atoms			ZeroOcc	AltConf
			Total	C	O		
10	B	1	11	6	5	0	0

- Molecule 11 is 2-acetamido-2-deoxy-alpha-D-galactopyranose (three-letter code: A2G) (formula: C₈H₁₅NO₆).



Mol	Chain	Residues	Atoms				ZeroOcc	AltConf
			Total	C	N	O		
11	B	1	15	8	1	6	0	0

- Molecule 12 is TOLUENE (three-letter code: MBN) (formula: C₇H₈).



Mol	Chain	Residues	Atoms	ZeroOcc	AltConf
12	B	1	Total C 7 7	0	0

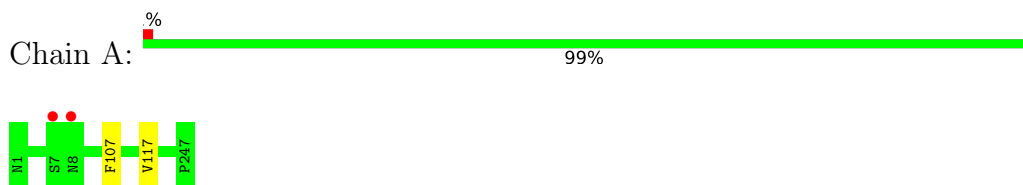
- Molecule 13 is water.

Mol	Chain	Residues	Atoms	ZeroOcc	AltConf
13	A	133	Total O 133 133	0	0
13	B	170	Total O 170 170	0	0

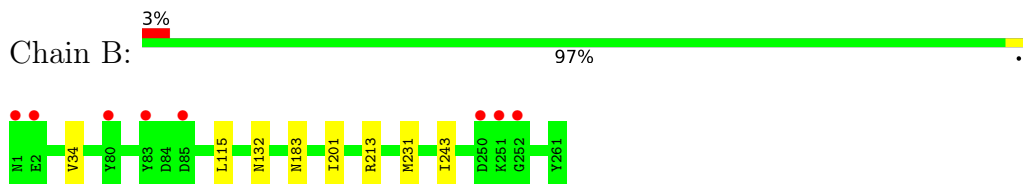
3 Residue-property plots [i](#)

These plots are drawn for all protein, RNA, DNA and oligosaccharide chains in the entry. The first graphic for a chain summarises the proportions of the various outlier classes displayed in the second graphic. The second graphic shows the sequence view annotated by issues in geometry and electron density. Residues are color-coded according to the number of geometric quality criteria for which they contain at least one outlier: green = 0, yellow = 1, orange = 2 and red = 3 or more. A red dot above a residue indicates a poor fit to the electron density ($RSRZ > 2$). Stretches of 2 or more consecutive residues without any outlier are shown as a green connector. Residues present in the sample, but not in the model, are shown in grey.

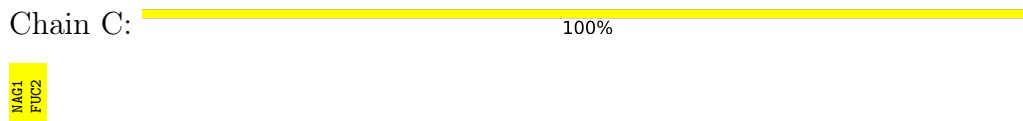
- Molecule 1: rRNA N-glycosidase



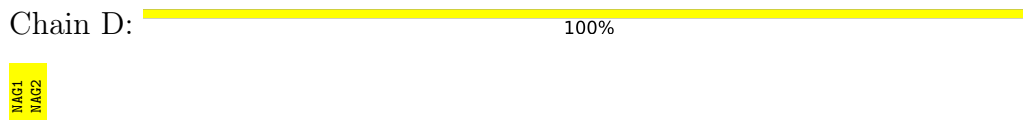
- Molecule 2: rRNA N-glycosidase



- Molecule 3: alpha-L-fucopyranose-(1-3)-2-acetamido-2-deoxy-beta-D-glucopyranose



- Molecule 4: 2-acetamido-2-deoxy-beta-D-glucopyranose-(1-4)-2-acetamido-2-deoxy-beta-D-glucopyranose



4 Data and refinement statistics

Property	Value	Source
Space group	P 21 21 2	Depositor
Cell constants a, b, c, α , β , γ	130.31Å 138.40Å 44.94Å 90.00° 90.00° 90.00°	Depositor
Resolution (Å)	32.62 – 2.00 32.62 – 2.00	Depositor EDS
% Data completeness (in resolution range)	99.5 (32.62-2.00) 99.6 (32.62-2.00)	Depositor EDS
R_{merge}	0.28	Depositor
R_{sym}	(Not available)	Depositor
$\langle I/\sigma(I) \rangle$ ¹	1.75 (at 2.00Å)	Xtrriage
Refinement program	REFMAC 5.8.0107	Depositor
R, R_{free}	0.231 , 0.266 0.232 , 0.266	Depositor DCC
R_{free} test set	2829 reflections (5.08%)	wwPDB-VP
Wilson B-factor (Å ²)	19.9	Xtrriage
Anisotropy	1.253	Xtrriage
Bulk solvent k_{sol} (e/Å ³), B_{sol} (Å ²)	0.34 , 41.7	EDS
L-test for twinning ²	$\langle L \rangle = 0.43$, $\langle L^2 \rangle = 0.26$	Xtrriage
Estimated twinning fraction	No twinning to report.	Xtrriage
F_o, F_c correlation	0.93	EDS
Total number of atoms	4391	wwPDB-VP
Average B, all atoms (Å ²)	29.0	wwPDB-VP

Xtrriage's analysis on translational NCS is as follows: *The largest off-origin peak in the Patterson function is 3.79% of the height of the origin peak. No significant pseudotranslation is detected.*

¹Intensities estimated from amplitudes.

²Theoretical values of $\langle |L| \rangle$, $\langle L^2 \rangle$ for acentric reflections are 0.5, 0.333 respectively for untwinned datasets, and 0.375, 0.2 for perfectly twinned datasets.

5 Model quality

5.1 Standard geometry

Bond lengths and bond angles in the following residue types are not validated in this section: FUC, PO4, PGE, BMA, EDO, MBN, NAG, GAL, A2G

The Z score for a bond length (or angle) is the number of standard deviations the observed value is removed from the expected value. A bond length (or angle) with $|Z| > 5$ is considered an outlier worth inspection. RMSZ is the root-mean-square of all Z scores of the bond lengths (or angles).

Mol	Chain	Bond lengths		Bond angles	
		RMSZ	# Z >5	RMSZ	# Z >5
1	A	0.44	0/1980	0.63	0/2690
2	B	0.46	0/2045	0.65	0/2785
All	All	0.45	0/4025	0.64	0/5475

There are no bond length outliers.

There are no bond angle outliers.

There are no chirality outliers.

There are no planarity outliers.

5.2 Too-close contacts

In the following table, the Non-H and H(model) columns list the number of non-hydrogen atoms and hydrogen atoms in the chain respectively. The H(added) column lists the number of hydrogen atoms added and optimized by MolProbity. The Clashes column lists the number of clashes within the asymmetric unit, whereas Symm-Clashes lists symmetry-related clashes.

Mol	Chain	Non-H	H(model)	H(added)	Clashes	Symm-Clashes
1	A	1936	0	1882	1	0
2	B	2009	0	1922	4	0
3	C	24	0	21	0	0
4	D	28	0	25	0	0
5	A	14	0	13	0	0
5	B	14	0	13	1	0
6	A	5	0	0	0	0
7	B	11	0	10	1	0
8	B	4	0	6	0	0
9	B	10	0	14	1	0
10	B	11	0	10	0	0

Continued on next page...

Continued from previous page...

Mol	Chain	Non-H	H(model)	H(added)	Clashes	Symm-Clashes
11	B	15	0	11	0	0
12	B	7	0	5	0	0
13	A	133	0	0	0	0
13	B	170	0	0	0	0
All	All	4391	0	3932	6	0

The all-atom clashscore is defined as the number of clashes found per 1000 atoms (including hydrogen atoms). The all-atom clashscore for this structure is 1.

All (6) close contacts within the same asymmetric unit are listed below, sorted by their clash magnitude.

Atom-1	Atom-2	Interatomic distance (Å)	Clash overlap (Å)
5:B:303:NAG:O4	7:B:306:BMA:C1	2.19	0.90
2:B:183:ASN:HD21	9:B:308:PGE:H3	1.63	0.63
2:B:231:MET:HE3	2:B:243:ILE:HG21	1.90	0.54
1:A:107:PHE:HB3	1:A:117:VAL:HG21	1.93	0.50
2:B:34:VAL:HG12	2:B:115:LEU:HD12	1.98	0.45
2:B:201:ILE:HD13	2:B:231:MET:HG2	1.99	0.44

There are no symmetry-related clashes.

5.3 Torsion angles [i](#)

5.3.1 Protein backbone [i](#)

In the following table, the Percentiles column shows the percent Ramachandran outliers of the chain as a percentile score with respect to all X-ray entries followed by that with respect to entries of similar resolution.

The Analysed column shows the number of residues for which the backbone conformation was analysed, and the total number of residues.

Mol	Chain	Analysed	Favoured	Allowed	Outliers	Percentiles	
1	A	245/247 (99%)	237 (97%)	8 (3%)	0	100	100
2	B	259/261 (99%)	253 (98%)	6 (2%)	0	100	100
All	All	504/508 (99%)	490 (97%)	14 (3%)	0	100	100

There are no Ramachandran outliers to report.

5.3.2 Protein sidechains [i](#)

In the following table, the Percentiles column shows the percent sidechain outliers of the chain as a percentile score with respect to all X-ray entries followed by that with respect to entries of similar resolution.

The Analysed column shows the number of residues for which the sidechain conformation was analysed, and the total number of residues.

Mol	Chain	Analysed	Rotameric	Outliers	Percentiles	
1	A	214/217 (99%)	214 (100%)	0	100	100
2	B	224/229 (98%)	222 (99%)	2 (1%)	78	83
All	All	438/446 (98%)	436 (100%)	2 (0%)	88	92

All (2) residues with a non-rotameric sidechain are listed below:

Mol	Chain	Res	Type
2	B	132	ASN
2	B	213	ARG

Sometimes sidechains can be flipped to improve hydrogen bonding and reduce clashes. There are no such sidechains identified.

5.3.3 RNA [i](#)

There are no RNA molecules in this entry.

5.4 Non-standard residues in protein, DNA, RNA chains [i](#)

There are no non-standard protein/DNA/RNA residues in this entry.

5.5 Carbohydrates [i](#)

4 monosaccharides are modelled in this entry.

In the following table, the Counts columns list the number of bonds (or angles) for which Mogul statistics could be retrieved, the number of bonds (or angles) that are observed in the model and the number of bonds (or angles) that are defined in the Chemical Component Dictionary. The Link column lists molecule types, if any, to which the group is linked. The Z score for a bond length (or angle) is the number of standard deviations the observed value is removed from the expected value. A bond length (or angle) with $|Z| > 2$ is considered an outlier worth inspection. RMSZ is the root-mean-square of all Z scores of the bond lengths (or angles).

Mol	Type	Chain	Res	Link	Bond lengths			Bond angles		
					Counts	RMSZ	# Z > 2	Counts	RMSZ	# Z > 2
3	NAG	C	1	3,2	14,14,15	1.01	1 (7%)	17,19,21	1.54	2 (11%)
3	FUC	C	2	3	10,10,11	0.91	1 (10%)	14,14,16	2.07	5 (35%)
4	NAG	D	1	4,2	14,14,15	0.96	0	17,19,21	2.32	5 (29%)
4	NAG	D	2	4	14,14,15	1.01	1 (7%)	17,19,21	1.40	3 (17%)

In the following table, the Chirals column lists the number of chiral outliers, the number of chiral centers analysed, the number of these observed in the model and the number defined in the Chemical Component Dictionary. Similar counts are reported in the Torsion and Rings columns. '-' means no outliers of that kind were identified.

Mol	Type	Chain	Res	Link	Chirals	Torsions	Rings
3	NAG	C	1	3,2	-	2/6/23/26	0/1/1/1
3	FUC	C	2	3	-	-	0/1/1/1
4	NAG	D	1	4,2	-	1/6/23/26	0/1/1/1
4	NAG	D	2	4	-	0/6/23/26	0/1/1/1

All (3) bond length outliers are listed below:

Mol	Chain	Res	Type	Atoms	Z	Observed(Å)	Ideal(Å)
4	D	2	NAG	C2-N2	-2.39	1.42	1.46
3	C	2	FUC	O5-C1	-2.24	1.40	1.43
3	C	1	NAG	O5-C1	-2.20	1.40	1.43

All (15) bond angle outliers are listed below:

Mol	Chain	Res	Type	Atoms	Z	Observed(°)	Ideal(°)
4	D	1	NAG	C1-O5-C5	6.57	121.10	112.19
4	D	1	NAG	C6-C5-C4	-4.73	101.92	113.00
3	C	1	NAG	C1-O5-C5	3.77	117.30	112.19
3	C	2	FUC	O5-C1-C2	-3.71	105.05	110.77
3	C	2	FUC	C1-C2-C3	-3.27	105.64	109.67
3	C	2	FUC	O2-C2-C1	3.23	115.77	109.15
3	C	2	FUC	C3-C4-C5	-3.11	104.93	109.77
3	C	1	NAG	O5-C5-C6	-2.99	102.52	107.20
4	D	1	NAG	O5-C5-C4	2.86	117.79	110.83
3	C	2	FUC	O5-C5-C4	-2.69	104.69	109.52
4	D	2	NAG	O5-C5-C6	2.62	111.31	107.20
4	D	1	NAG	C3-C4-C5	2.36	114.44	110.24
4	D	2	NAG	O5-C5-C4	-2.21	105.45	110.83
4	D	1	NAG	C4-C3-C2	2.16	114.18	111.02
4	D	2	NAG	C3-C4-C5	-2.12	106.47	110.24

There are no chirality outliers.

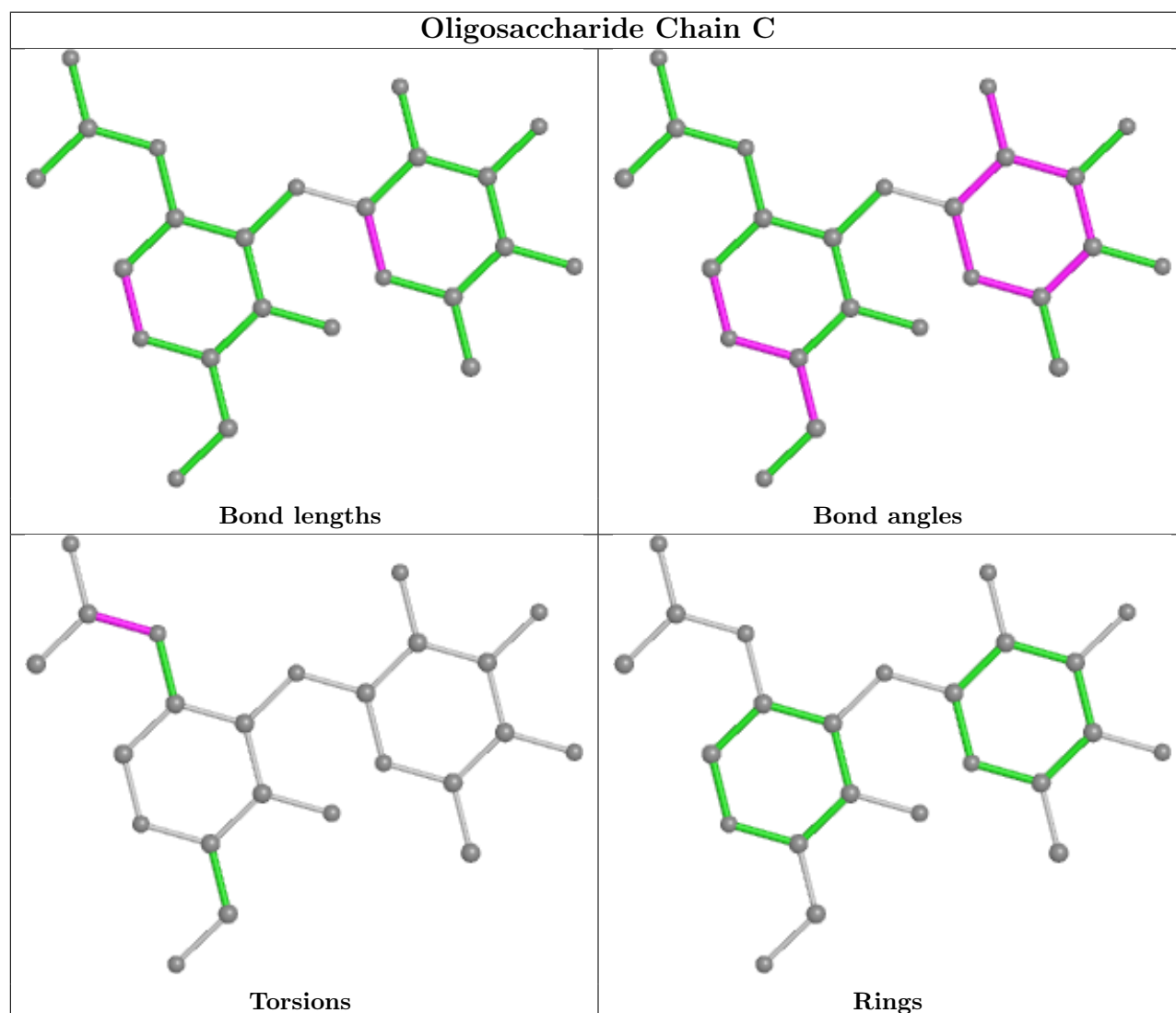
All (3) torsion outliers are listed below:

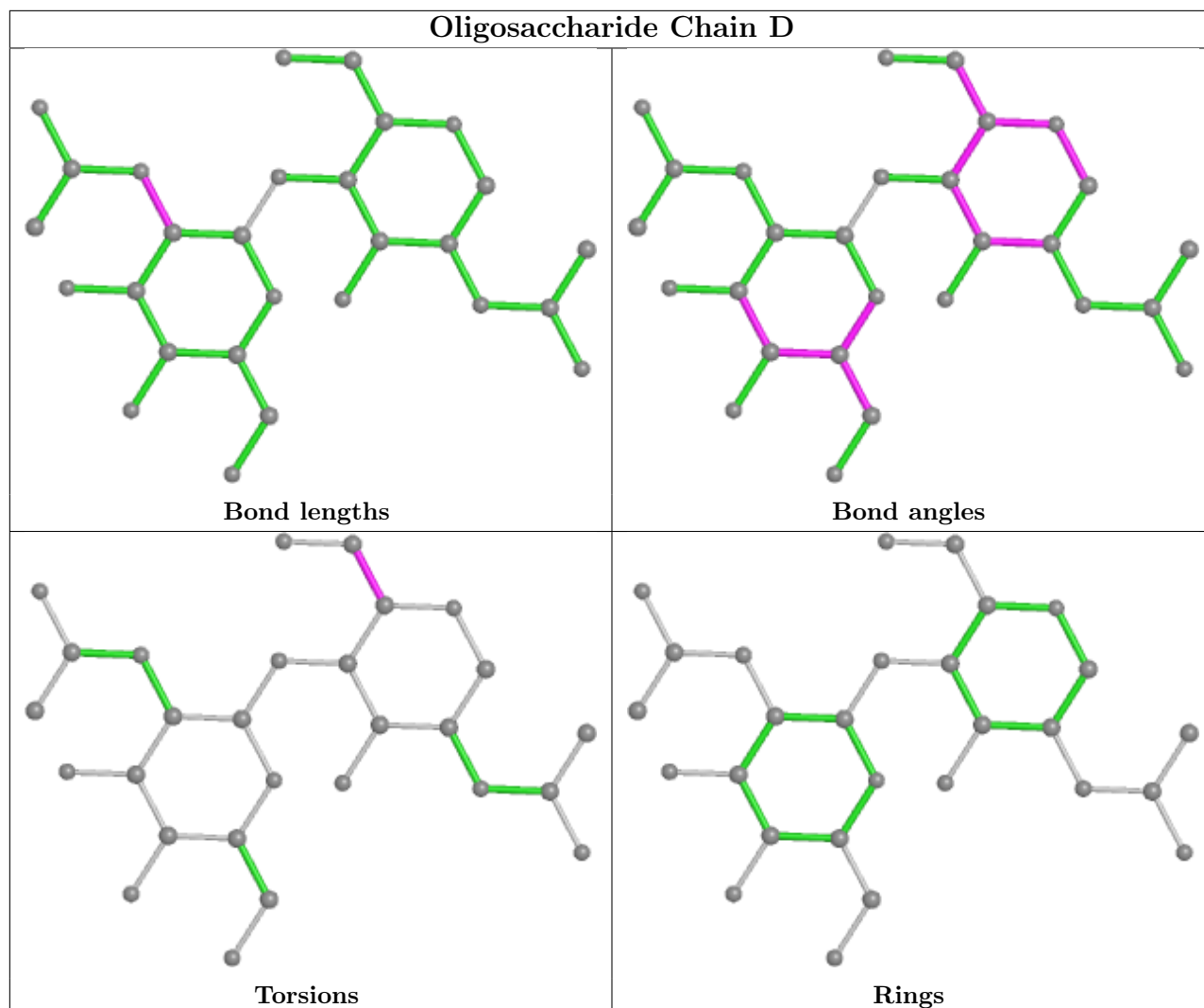
Mol	Chain	Res	Type	Atoms
3	C	1	NAG	C8-C7-N2-C2
3	C	1	NAG	O7-C7-N2-C2
4	D	1	NAG	C4-C5-C6-O6

There are no ring outliers.

No monomer is involved in short contacts.

The following is a two-dimensional graphical depiction of Mogul quality analysis of bond lengths, bond angles, torsion angles, and ring geometry for oligosaccharide.





5.6 Ligand geometry [i](#)

9 ligands are modelled in this entry.

In the following table, the Counts columns list the number of bonds (or angles) for which Mogul statistics could be retrieved, the number of bonds (or angles) that are observed in the model and the number of bonds (or angles) that are defined in the Chemical Component Dictionary. The Link column lists molecule types, if any, to which the group is linked. The Z score for a bond length (or angle) is the number of standard deviations the observed value is removed from the expected value. A bond length (or angle) with $|Z| > 2$ is considered an outlier worth inspection. RMSZ is the root-mean-square of all Z scores of the bond lengths (or angles).

Mol	Type	Chain	Res	Link	Bond lengths			Bond angles		
					Counts	RMSZ	$\# Z > 2$	Counts	RMSZ	$\# Z > 2$
9	PGE	B	308	-	9,9,9	0.45	0	8,8,8	0.80	0
5	NAG	A	301	-	14,14,15	0.84	0	17,19,21	1.85	4 (23%)
6	PO4	A	302	-	4,4,4	0.90	0	6,6,6	0.54	0

Mol	Type	Chain	Res	Link	Bond lengths			Bond angles		
					Counts	RMSZ	# Z > 2	Counts	RMSZ	# Z > 2
10	GAL	B	309	-	11,11,12	0.83	0	15,15,17	1.90	4 (26%)
11	A2G	B	310	12	15,15,15	0.91	1 (6%)	21,21,21	1.08	0
5	NAG	B	303	-	14,14,15	0.28	0	17,19,21	0.60	0
8	EDO	B	307	-	3,3,3	0.54	0	2,2,2	0.24	0
12	MBN	B	311	11	7,7,7	0.16	0	8,8,8	0.35	0
7	BMA	B	306	-	11,11,12	0.34	0	15,15,17	1.46	3 (20%)

In the following table, the Chirals column lists the number of chiral outliers, the number of chiral centers analysed, the number of these observed in the model and the number defined in the Chemical Component Dictionary. Similar counts are reported in the Torsion and Rings columns. '-' means no outliers of that kind were identified.

Mol	Type	Chain	Res	Link	Chirals	Torsions	Rings
9	PGE	B	308	-	-	4/7/7/7	-
5	NAG	A	301	-	-	0/6/23/26	0/1/1/1
10	GAL	B	309	-	-	2/2/19/22	0/1/1/1
11	A2G	B	310	12	-	1/6/26/26	0/1/1/1
5	NAG	B	303	-	-	0/6/23/26	0/1/1/1
8	EDO	B	307	-	-	1/1/1/1	-
12	MBN	B	311	11	-	-	0/1/1/1
7	BMA	B	306	-	-	2/2/19/22	0/1/1/1

All (1) bond length outliers are listed below:

Mol	Chain	Res	Type	Atoms	Z	Observed(Å)	Ideal(Å)
11	B	310	A2G	C2-N2	-2.54	1.41	1.45

All (11) bond angle outliers are listed below:

Mol	Chain	Res	Type	Atoms	Z	Observed(°)	Ideal(°)
10	B	309	GAL	C1-O5-C5	4.33	118.06	112.19
5	A	301	NAG	O5-C1-C2	-4.16	104.72	111.29
5	A	301	NAG	C1-O5-C5	3.61	117.08	112.19
10	B	309	GAL	C1-C2-C3	3.48	113.94	109.67
10	B	309	GAL	O5-C5-C6	3.22	112.26	107.20
7	B	306	BMA	C1-O5-C5	3.13	116.43	112.19
7	B	306	BMA	O5-C5-C6	3.06	112.00	107.20
5	A	301	NAG	C4-C3-C2	2.89	115.25	111.02
5	A	301	NAG	C2-N2-C7	-2.76	118.97	122.90
10	B	309	GAL	C3-C4-C5	-2.31	106.11	110.24
7	B	306	BMA	C6-C5-C4	-2.24	107.75	113.00

There are no chirality outliers.

All (10) torsion outliers are listed below:

Mol	Chain	Res	Type	Atoms
9	B	308	PGE	C4-C3-O2-C2
7	B	306	BMA	C4-C5-C6-O6
8	B	307	EDO	O1-C1-C2-O2
9	B	308	PGE	O3-C5-C6-O4
10	B	309	GAL	C4-C5-C6-O6
7	B	306	BMA	O5-C5-C6-O6
9	B	308	PGE	O2-C3-C4-O3
11	B	310	A2G	C4-C5-C6-O6
10	B	309	GAL	O5-C5-C6-O6
9	B	308	PGE	C1-C2-O2-C3

There are no ring outliers.

3 monomers are involved in 2 short contacts:

Mol	Chain	Res	Type	Clashes	Symm-Clashes
9	B	308	PGE	1	0
5	B	303	NAG	1	0
7	B	306	BMA	1	0

5.7 Other polymers [i](#)

There are no such residues in this entry.

5.8 Polymer linkage issues [i](#)

There are no chain breaks in this entry.

6 Fit of model and data [i](#)

6.1 Protein, DNA and RNA chains [i](#)

In the following table, the column labelled ‘#RSRZ > 2’ contains the number (and percentage) of RSRZ outliers, followed by percent RSRZ outliers for the chain as percentile scores relative to all X-ray entries and entries of similar resolution. The OWAB column contains the minimum, median, 95th percentile and maximum values of the occupancy-weighted average B-factor per residue. The column labelled ‘Q < 0.9’ lists the number of (and percentage) of residues with an average occupancy less than 0.9.

Mol	Chain	Analysed	<RSRZ>	#RSRZ>2	OWAB(Å ²)	Q<0.9
1	A	247/247 (100%)	-0.15	2 (0%) 86 85	15, 26, 40, 51	0
2	B	261/261 (100%)	-0.01	8 (3%) 49 48	17, 27, 50, 77	0
All	All	508/508 (100%)	-0.08	10 (1%) 65 63	15, 26, 42, 77	0

All (10) RSRZ outliers are listed below:

Mol	Chain	Res	Type	RSRZ
2	B	83	TYR	5.5
2	B	1	ASN	4.8
2	B	80	TYR	3.8
2	B	251	LYS	3.0
2	B	250	ASP	3.0
1	A	7	SER	2.5
1	A	8	ASN	2.4
2	B	252	GLY	2.2
2	B	2	GLU	2.0
2	B	85	ASP	2.0

6.2 Non-standard residues in protein, DNA, RNA chains [i](#)

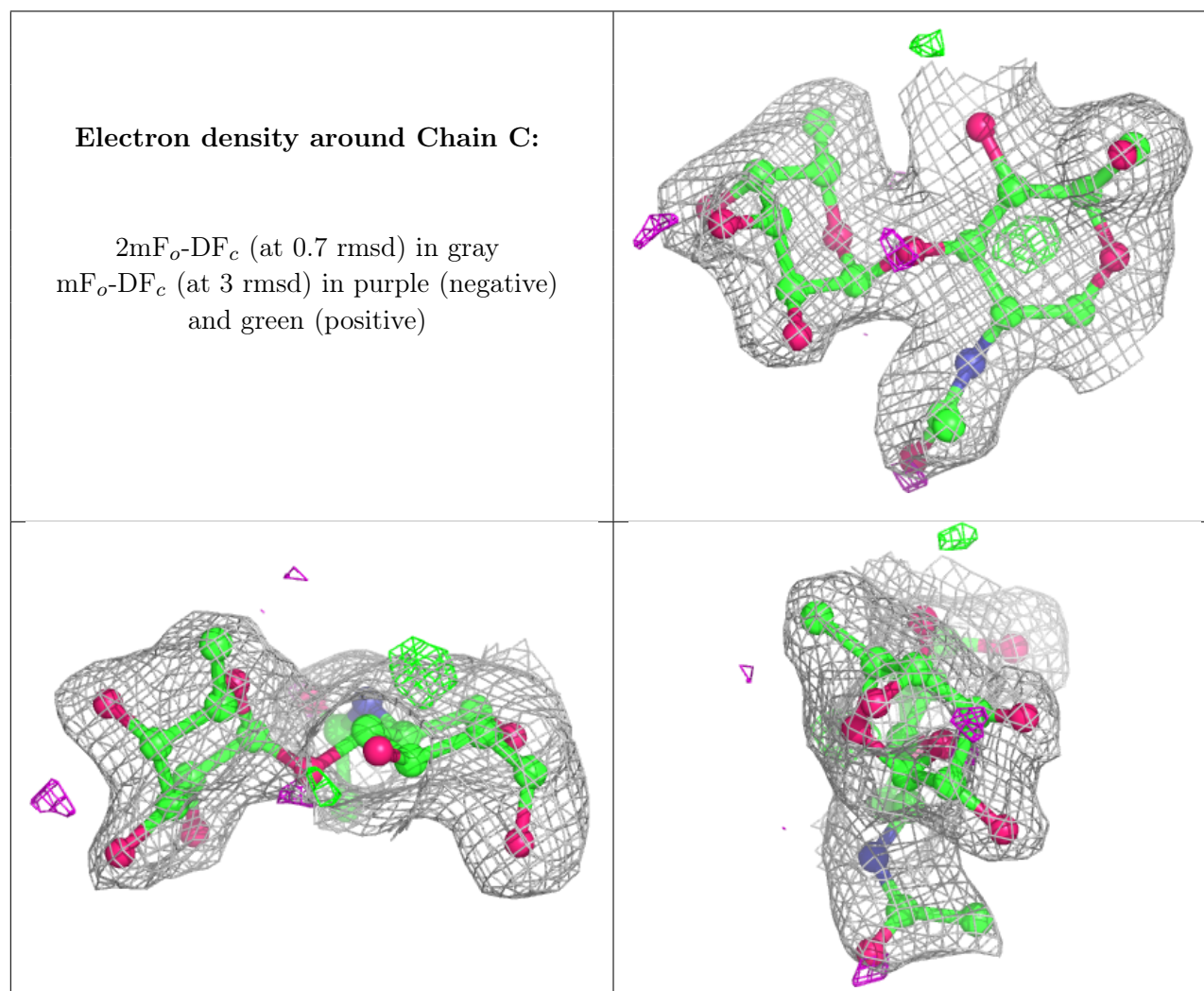
There are no non-standard protein/DNA/RNA residues in this entry.

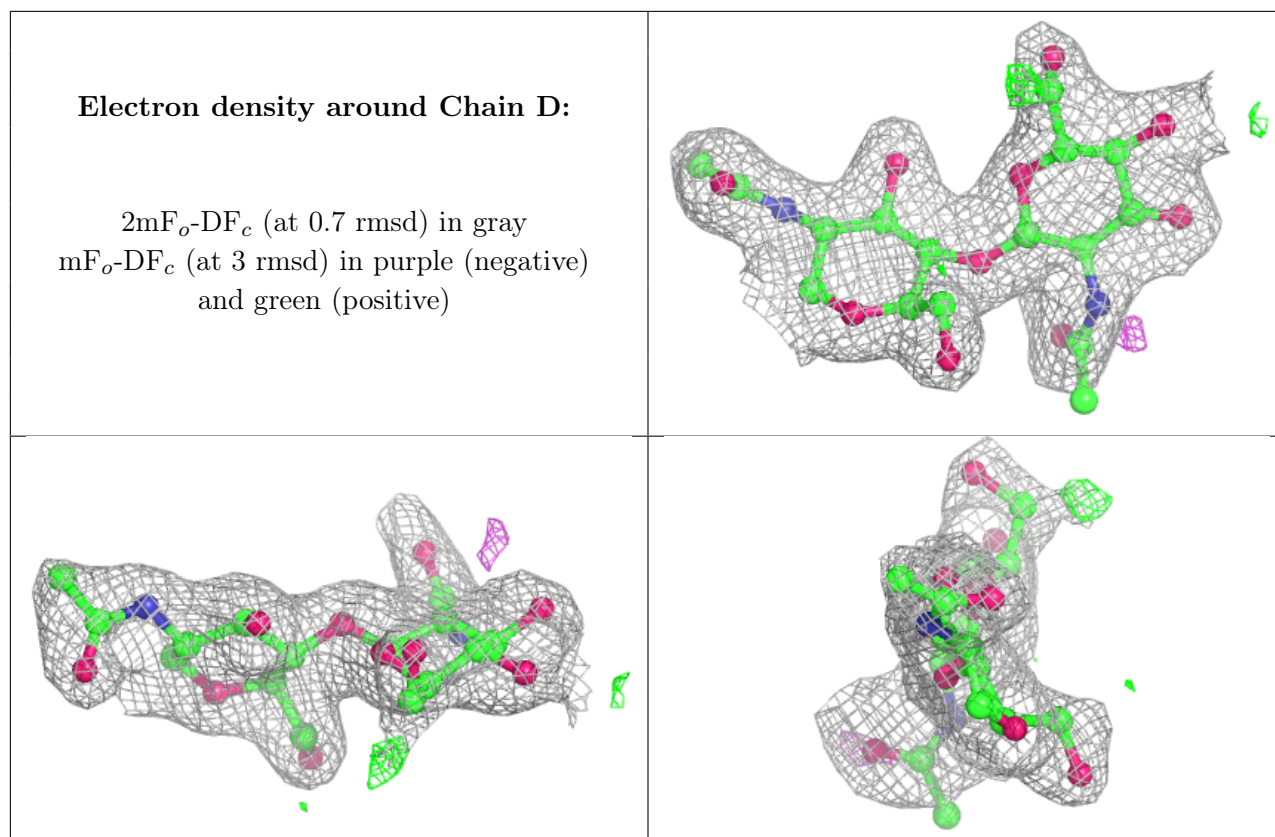
6.3 Carbohydrates [i](#)

In the following table, the Atoms column lists the number of modelled atoms in the group and the number defined in the chemical component dictionary. The B-factors column lists the minimum, median, 95th percentile and maximum values of B factors of atoms in the group. The column labelled ‘Q < 0.9’ lists the number of atoms with occupancy less than 0.9.

Mol	Type	Chain	Res	Atoms	RSCC	RSR	B-factors(\AA^2)	Q<0.9
3	FUC	C	2	10/11	0.81	0.19	56,59,62,62	0
4	NAG	D	2	14/15	0.84	0.24	63,66,67,68	0
3	NAG	C	1	14/15	0.85	0.13	39,45,50,52	0
4	NAG	D	1	14/15	0.91	0.13	39,41,44,46	0

The following is a graphical depiction of the model fit to experimental electron density for oligosaccharide. Each fit is shown from different orientation to approximate a three-dimensional view.





6.4 Ligands [i](#)

In the following table, the Atoms column lists the number of modelled atoms in the group and the number defined in the chemical component dictionary. The B-factors column lists the minimum, median, 95th percentile and maximum values of B factors of atoms in the group. The column labelled 'Q< 0.9' lists the number of atoms with occupancy less than 0.9.

Mol	Type	Chain	Res	Atoms	RSCC	RSR	B-factors(Å ²)	Q<0.9
7	BMA	B	306	11/12	0.61	0.26	39,40,41,42	11
12	MBN	B	311	7/7	0.77	0.26	55,56,58,58	0
5	NAG	B	303	14/15	0.81	0.19	57,64,68,70	0
8	EDO	B	307	4/4	0.83	0.24	38,42,44,46	0
5	NAG	A	301	14/15	0.86	0.28	54,59,65,70	0
9	PGE	B	308	10/10	0.89	0.13	34,37,40,43	0
11	A2G	B	310	15/15	0.90	0.14	42,43,52,52	0
10	GAL	B	309	11/12	0.91	0.10	28,31,35,36	0
6	PO4	A	302	5/5	0.95	0.13	54,55,56,58	0

6.5 Other polymers [i](#)

There are no such residues in this entry.