



# Full wwPDB X-ray Structure Validation Report ⓘ

Nov 16, 2022 – 12:29 pm GMT

PDB ID : 7Z9S  
Title : ATAD2 in complex with PepLite-Arg  
Authors : Turberville, S.; Martin, M.P.; Hope, I.; Noble, M.E.M.  
Deposited on : 2022-03-21  
Resolution : 1.50 Å(reported)

This is a Full wwPDB X-ray Structure Validation Report for a publicly released PDB entry.

We welcome your comments at [validation@mail.wwpdb.org](mailto:validation@mail.wwpdb.org)

A user guide is available at

<https://www.wwpdb.org/validation/2017/XrayValidationReportHelp>

with specific help available everywhere you see the ⓘ symbol.

The types of validation reports are described at

<http://www.wwpdb.org/validation/2017/FAQs#types>.

---

The following versions of software and data (see [references ⓘ](#)) were used in the production of this report:

MolProbity : 4.02b-467  
Mogul : 1.8.4, CSD as541be (2020)  
Xtriage (Phenix) : 1.13  
EDS : 2.31.2  
buster-report : 1.1.7 (2018)  
Percentile statistics : 20191225.v01 (using entries in the PDB archive December 25th 2019)  
Refmac : 5.8.0267  
CCP4 : 7.1.010 (Gargrove)  
Ideal geometry (proteins) : Engh & Huber (2001)  
Ideal geometry (DNA, RNA) : Parkinson et al. (1996)  
Validation Pipeline (wwPDB-VP) : 2.31.2

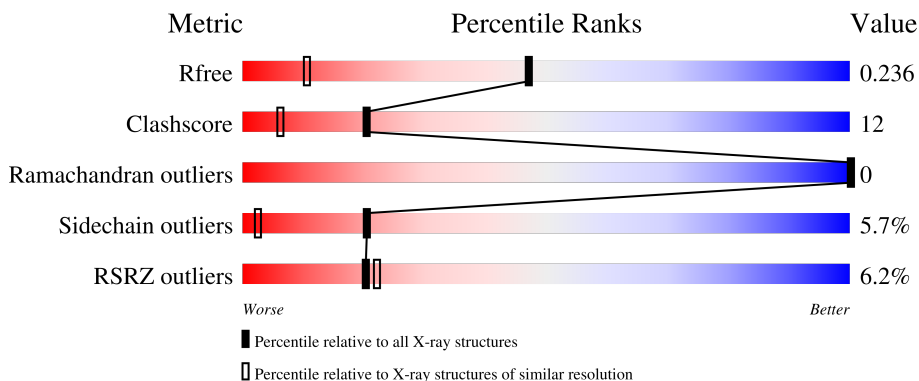
# 1 Overall quality at a glance

The following experimental techniques were used to determine the structure:

*X-RAY DIFFRACTION*

The reported resolution of this entry is 1.50 Å.

Percentile scores (ranging between 0-100) for global validation metrics of the entry are shown in the following graphic. The table shows the number of entries on which the scores are based.



Metric	Whole archive (#Entries)	Similar resolution (#Entries, resolution range(Å))
$R_{free}$	130704	2936 (1.50-1.50)
Clashscore	141614	3144 (1.50-1.50)
Ramachandran outliers	138981	3066 (1.50-1.50)
Sidechain outliers	138945	3064 (1.50-1.50)
RSRZ outliers	127900	2884 (1.50-1.50)

The table below summarises the geometric issues observed across the polymeric chains and their fit to the electron density. The red, orange, yellow and green segments of the lower bar indicate the fraction of residues that contain outliers for  $\geq 3$ , 2, 1 and 0 types of geometric quality criteria respectively. A grey segment represents the fraction of residues that are not modelled. The numeric value for each fraction is indicated below the corresponding segment, with a dot representing fractions  $\leq 5\%$ . The upper red bar (where present) indicates the fraction of residues that have poor fit to the electron density. The numeric value is given above the bar.

Mol	Chain	Length	Quality of chain
1	AAA	130	

The following table lists non-polymeric compounds, carbohydrate monomers and non-standard residues in protein, DNA, RNA chains that are outliers for geometric or electron-density-fit criteria:

Mol	Type	Chain	Res	Chirality	Geometry	Clashes	Electron density
4	IJI	AAA	1203	-	-	-	X

*Continued on next page...*

*Continued from previous page...*

<b>Mol</b>	<b>Type</b>	<b>Chain</b>	<b>Res</b>	<b>Chirality</b>	<b>Geometry</b>	<b>Clashes</b>	<b>Electron density</b>
5	EDO	AAA	1205	-	-	X	-
5	EDO	AAA	1209	-	-	X	-

## 2 Entry composition [i](#)

There are 6 unique types of molecules in this entry. The entry contains 1373 atoms, of which 0 are hydrogens and 0 are deuteriums.

In the tables below, the ZeroOcc column contains the number of atoms modelled with zero occupancy, the AltConf column contains the number of residues with at least one atom in alternate conformation and the Trace column contains the number of residues modelled with at most 2 atoms.

- Molecule 1 is a protein called ATPase family AAA domain-containing protein 2.

Mol	Chain	Residues	Atoms					ZeroOcc	AltConf	Trace
			Total	C	N	O	S			
1	AAA	130	1123	702	200	216	5	0	4	0

There are 2 discrepancies between the modelled and reference sequences:

Chain	Residue	Modelled	Actual	Comment	Reference
AAA	979	SER	-	expression tag	UNP Q6PL18
AAA	980	MET	-	expression tag	UNP Q6PL18

- Molecule 2 is SULFATE ION (three-letter code: SO4) (formula: O<sub>4</sub>S).

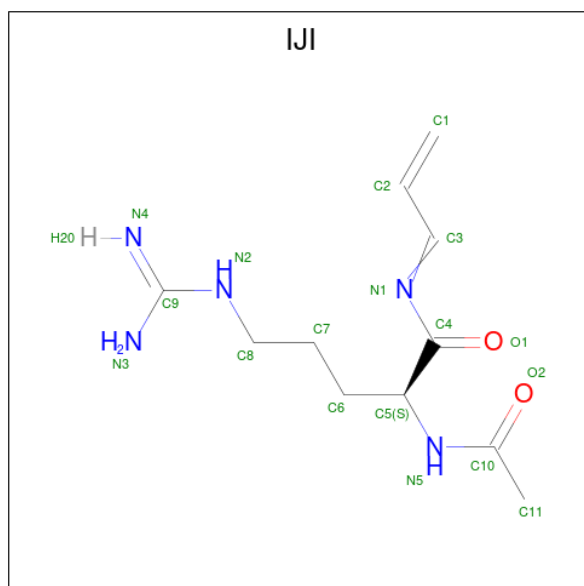


Mol	Chain	Residues	Atoms			ZeroOcc	AltConf
2	AAA	1	Total	O	S	0	0
			5	4	1		
2	AAA	1	Total	O	S	0	0
			5	4	1		

- Molecule 3 is CHLORIDE ION (three-letter code: CL) (formula: Cl).

Mol	Chain	Residues	Atoms	ZeroOcc	AltConf
3	AAA	1	Total Cl 1 1	0	0

- Molecule 4 is (2 {S})-2-acetamido-5-carbamimidamido- {N}-prop-2-enyl-pentanamide (three-letter code: IJI) (formula: C<sub>11</sub>H<sub>19</sub>N<sub>5</sub>O<sub>2</sub>) (labeled as "Ligand of Interest" by depositor).



Mol	Chain	Residues	Atoms	ZeroOcc	AltConf
4	AAA	1	Total C N O 18 11 5 2	0	0

- Molecule 5 is 1,2-ETHANEDIOL (three-letter code: EDO) (formula: C<sub>2</sub>H<sub>6</sub>O<sub>2</sub>).



Mol	Chain	Residues	Atoms	ZeroOcc	AltConf
5	AAA	1	Total C O 4 2 2	0	0
5	AAA	1	Total C O 4 2 2	0	0
5	AAA	1	Total C O 4 2 2	0	0
5	AAA	1	Total C O 4 2 2	0	0
5	AAA	1	Total C O 4 2 2	0	0
5	AAA	1	Total C O 4 2 2	0	0

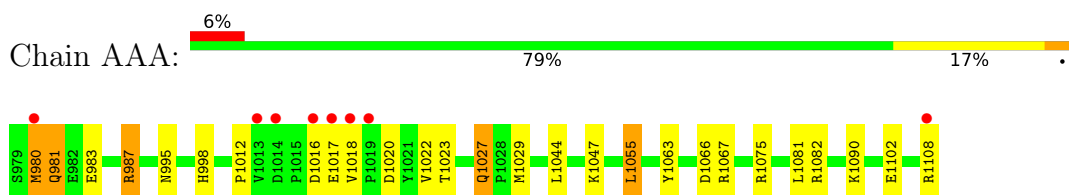
- Molecule 6 is water.

Mol	Chain	Residues	Atoms	ZeroOcc	AltConf
6	AAA	197	Total O 197 197	0	0

### 3 Residue-property plots [i](#)

These plots are drawn for all protein, RNA, DNA and oligosaccharide chains in the entry. The first graphic for a chain summarises the proportions of the various outlier classes displayed in the second graphic. The second graphic shows the sequence view annotated by issues in geometry and electron density. Residues are color-coded according to the number of geometric quality criteria for which they contain at least one outlier: green = 0, yellow = 1, orange = 2 and red = 3 or more. A red dot above a residue indicates a poor fit to the electron density ( $RSRZ > 2$ ). Stretches of 2 or more consecutive residues without any outlier are shown as a green connector. Residues present in the sample, but not in the model, are shown in grey.

- Molecule 1: ATPase family AAA domain-containing protein 2



## 4 Data and refinement statistics

Property	Value	Source
Space group	P 65 2 2	Depositor
Cell constants a, b, c, $\alpha$ , $\beta$ , $\gamma$	79.37Å 79.37Å 137.29Å 90.00° 90.00° 120.00°	Depositor
Resolution (Å)	48.57 – 1.50 48.57 – 1.50	Depositor EDS
% Data completeness (in resolution range)	100.0 (48.57-1.50) 100.0 (48.57-1.50)	Depositor EDS
$R_{merge}$	0.12	Depositor
$R_{sym}$	(Not available)	Depositor
$\langle I/\sigma(I) \rangle$ <sup>1</sup>	1.57 (at 1.50Å)	Xtrriage
Refinement program	REFMAC 5.8.0258, REFMAC 5.8.0258	Depositor
R, $R_{free}$	0.204 , 0.236 0.204 , 0.236	Depositor DCC
$R_{free}$ test set	2028 reflections (4.87%)	wwPDB-VP
Wilson B-factor (Å <sup>2</sup> )	26.5	Xtrriage
Anisotropy	0.147	Xtrriage
Bulk solvent $k_{sol}$ (e/Å <sup>3</sup> ), $B_{sol}$ (Å <sup>2</sup> )	(Not available) , (Not available)	EDS
L-test for twinning <sup>2</sup>	$\langle  L  \rangle = 0.51$ , $\langle L^2 \rangle = 0.34$	Xtrriage
Estimated twinning fraction	No twinning to report.	Xtrriage
$F_o, F_c$ correlation	0.97	EDS
Total number of atoms	1373	wwPDB-VP
Average B, all atoms (Å <sup>2</sup> )	35.0	wwPDB-VP

Xtrriage's analysis on translational NCS is as follows: *The largest off-origin peak in the Patterson function is 6.62% of the height of the origin peak. No significant pseudotranslation is detected.*

<sup>1</sup>Intensities estimated from amplitudes.

<sup>2</sup>Theoretical values of  $\langle |L| \rangle$ ,  $\langle L^2 \rangle$  for acentric reflections are 0.5, 0.333 respectively for untwinned datasets, and 0.375, 0.2 for perfectly twinned datasets.



## 5 Model quality [i](#)

### 5.1 Standard geometry [i](#)

Bond lengths and bond angles in the following residue types are not validated in this section: EDO, IJI, CL, SO4

The Z score for a bond length (or angle) is the number of standard deviations the observed value is removed from the expected value. A bond length (or angle) with  $|Z| > 5$  is considered an outlier worth inspection. RMSZ is the root-mean-square of all Z scores of the bond lengths (or angles).

Mol	Chain	Bond lengths		Bond angles	
		RMSZ	# Z  >5	RMSZ	# Z  >5
1	AAA	0.77	1/1141 (0.1%)	1.10	4/1539 (0.3%)

All (1) bond length outliers are listed below:

Mol	Chain	Res	Type	Atoms	Z	Observed(Å)	Ideal(Å)
1	AAA	1102	GLU	CD-OE2	7.12	1.33	1.25

All (4) bond angle outliers are listed below:

Mol	Chain	Res	Type	Atoms	Z	Observed(°)	Ideal(°)
1	AAA	987[A]	ARG	NE-CZ-NH2	-7.61	116.49	120.30
1	AAA	987[B]	ARG	NE-CZ-NH2	-7.61	116.49	120.30
1	AAA	987[A]	ARG	NE-CZ-NH1	6.45	123.53	120.30
1	AAA	987[B]	ARG	NE-CZ-NH1	6.45	123.53	120.30

There are no chirality outliers.

There are no planarity outliers.

### 5.2 Too-close contacts [i](#)

In the following table, the Non-H and H(model) columns list the number of non-hydrogen atoms and hydrogen atoms in the chain respectively. The H(added) column lists the number of hydrogen atoms added and optimized by MolProbity. The Clashes column lists the number of clashes within the asymmetric unit, whereas Symm-Clashes lists symmetry-related clashes.

Mol	Chain	Non-H	H(model)	H(added)	Clashes	Symm-Clashes
1	AAA	1123	0	1113	28	1
2	AAA	10	0	0	1	0
3	AAA	1	0	0	0	0

*Continued on next page...*

Continued from previous page...

Mol	Chain	Non-H	H(model)	H(added)	Clashes	Symm-Clashes
4	AAA	18	0	0	2	2
5	AAA	24	0	36	8	0
6	AAA	197	0	0	12	1
All	All	1373	0	1149	29	2

The all-atom clashscore is defined as the number of clashes found per 1000 atoms (including hydrogen atoms). The all-atom clashscore for this structure is 12.

All (29) close contacts within the same asymmetric unit are listed below, sorted by their clash magnitude.

Atom-1	Atom-2	Interatomic distance (Å)	Clash overlap (Å)
1:AAA:998:HIS:CD2	5:AAA:1205:EDO:H11	1.69	1.25
1:AAA:998:HIS:HD2	5:AAA:1205:EDO:C1	1.63	1.11
4:AAA:1203:IJI:C1	6:AAA:1482:HOH:O	2.03	1.07
1:AAA:998:HIS:HD2	5:AAA:1205:EDO:H11	0.88	1.03
1:AAA:995:ASN:ND2	6:AAA:1301:HOH:O	1.94	1.00
1:AAA:1108:ARG:HD3	5:AAA:1209:EDO:H11	1.44	0.99
1:AAA:987[B]:ARG:HD2	6:AAA:1344:HOH:O	1.76	0.84
1:AAA:1012:PRO:HG3	6:AAA:1310:HOH:O	1.78	0.83
1:AAA:1108:ARG:CD	5:AAA:1209:EDO:H11	2.12	0.79
1:AAA:1108:ARG:HD3	5:AAA:1209:EDO:C1	2.16	0.76
1:AAA:983:GLU:OE2	6:AAA:1302:HOH:O	2.04	0.75
1:AAA:1066:ASP:OD1	6:AAA:1304:HOH:O	2.05	0.75
1:AAA:1044:LEU:HD11	5:AAA:1209:EDO:H12	1.71	0.72
1:AAA:1020:ASP:OD2	6:AAA:1303:HOH:O	2.05	0.72
1:AAA:980:MET:HG3	1:AAA:981:GLN:HE21	1.58	0.68
1:AAA:1027[A]:GLN:CG	6:AAA:1346:HOH:O	2.50	0.58
1:AAA:1081[B]:LEU:C	1:AAA:1081[B]:LEU:HD23	2.24	0.57
1:AAA:1090:LYS:HE2	6:AAA:1465:HOH:O	2.08	0.53
1:AAA:998:HIS:CD2	5:AAA:1205:EDO:C1	2.54	0.52
1:AAA:981:GLN:NE2	1:AAA:981:GLN:H	2.07	0.52
1:AAA:1082:ARG:HD2	6:AAA:1411:HOH:O	2.11	0.50
1:AAA:1027[A]:GLN:HG3	6:AAA:1346:HOH:O	2.11	0.47
1:AAA:1075:ARG:HH21	4:AAA:1203:IJI:C9	2.28	0.46
1:AAA:1029:MET:HB2	1:AAA:1055:LEU:HD13	1.96	0.46
1:AAA:1047:LYS:HE2	1:AAA:1047:LYS:HB2	1.64	0.46
1:AAA:987[A]:ARG:NH2	6:AAA:1309:HOH:O	2.38	0.45
1:AAA:987[A]:ARG:NE	2:AAA:1201:SO4:O2	2.49	0.44
1:AAA:1016:ASP:O	1:AAA:1017:GLU:C	2.58	0.41
1:AAA:1018:VAL:CG1	1:AAA:1063:TYR:OH	2.68	0.41

All (2) symmetry-related close contacts are listed below. The label for Atom-2 includes the symmetry operator and encoded unit-cell translations to be applied.

Atom-1	Atom-2	Interatomic distance (Å)	Clash overlap (Å)
4:AAA:1203:IJI:C11	6:AAA:1390:HOH:O[8_565]	1.59	0.61
1:AAA:981:GLN:CB	4:AAA:1203:IJI:O2[8_665]	1.90	0.30

## 5.3 Torsion angles [i](#)

### 5.3.1 Protein backbone [i](#)

In the following table, the Percentiles column shows the percent Ramachandran outliers of the chain as a percentile score with respect to all X-ray entries followed by that with respect to entries of similar resolution.

The Analysed column shows the number of residues for which the backbone conformation was analysed, and the total number of residues.

Mol	Chain	Analysed	Favoured	Allowed	Outliers	Percentiles
1	AAA	132/130 (102%)	131 (99%)	1 (1%)	0	<b>100</b> <b>100</b>

There are no Ramachandran outliers to report.

### 5.3.2 Protein sidechains [i](#)

In the following table, the Percentiles column shows the percent sidechain outliers of the chain as a percentile score with respect to all X-ray entries followed by that with respect to entries of similar resolution.

The Analysed column shows the number of residues for which the sidechain conformation was analysed, and the total number of residues.

Mol	Chain	Analysed	Rotameric	Outliers	Percentiles
1	AAA	127/123 (103%)	118 (93%)	9 (7%)	<b>14</b> <b>1</b>

All (9) residues with a non-rotameric sidechain are listed below:

Mol	Chain	Res	Type
1	AAA	980	MET
1	AAA	981	GLN
1	AAA	1022	VAL
1	AAA	1023	THR
1	AAA	1027[A]	GLN

*Continued on next page...*

*Continued from previous page...*

Mol	Chain	Res	Type
1	AAA	1027[B]	GLN
1	AAA	1055	LEU
1	AAA	1067[A]	ARG
1	AAA	1067[B]	ARG

Sometimes sidechains can be flipped to improve hydrogen bonding and reduce clashes. There are no such sidechains identified.

### 5.3.3 RNA [i](#)

There are no RNA molecules in this entry.

### 5.4 Non-standard residues in protein, DNA, RNA chains [i](#)

There are no non-standard protein/DNA/RNA residues in this entry.

### 5.5 Carbohydrates [i](#)

There are no monosaccharides in this entry.

### 5.6 Ligand geometry [i](#)

Of 10 ligands modelled in this entry, 1 is monoatomic - leaving 9 for Mogul analysis.

In the following table, the Counts columns list the number of bonds (or angles) for which Mogul statistics could be retrieved, the number of bonds (or angles) that are observed in the model and the number of bonds (or angles) that are defined in the Chemical Component Dictionary. The Link column lists molecule types, if any, to which the group is linked. The Z score for a bond length (or angle) is the number of standard deviations the observed value is removed from the expected value. A bond length (or angle) with  $|Z| > 2$  is considered an outlier worth inspection. RMSZ is the root-mean-square of all Z scores of the bond lengths (or angles).

Mol	Type	Chain	Res	Link	Bond lengths			Bond angles		
					Counts	RMSZ	$\# Z  > 2$	Counts	RMSZ	$\# Z  > 2$
5	EDO	AAA	1205	-	3,3,3	0.09	0	2,2,2	0.48	0
2	SO4	AAA	1201	-	4,4,4	0.47	0	6,6,6	0.57	0
5	EDO	AAA	1204	-	3,3,3	0.38	0	2,2,2	0.13	0
5	EDO	AAA	1208	-	3,3,3	0.26	0	2,2,2	0.32	0
4	IJI	AAA	1203	1	16,17,17	1.76	1 (6%)	15,20,20	1.65	4 (26%)
2	SO4	AAA	1210	-	4,4,4	0.36	0	6,6,6	0.07	0

Mol	Type	Chain	Res	Link	Bond lengths			Bond angles		
					Counts	RMSZ	# Z  > 2	Counts	RMSZ	# Z  > 2
5	EDO	AAA	1207	-	3,3,3	0.16	0	2,2,2	0.57	0
5	EDO	AAA	1206	-	3,3,3	0.51	0	2,2,2	0.66	0
5	EDO	AAA	1209	-	3,3,3	0.09	0	2,2,2	0.50	0

In the following table, the Chirals column lists the number of chiral outliers, the number of chiral centers analysed, the number of these observed in the model and the number defined in the Chemical Component Dictionary. Similar counts are reported in the Torsion and Rings columns. '-' means no outliers of that kind were identified.

Mol	Type	Chain	Res	Link	Chirals	Torsions	Rings
5	EDO	AAA	1205	-	-	0/1/1/1	-
5	EDO	AAA	1204	-	-	0/1/1/1	-
5	EDO	AAA	1208	-	-	0/1/1/1	-
4	IJI	AAA	1203	1	-	8/16/19/19	-
5	EDO	AAA	1207	-	-	1/1/1/1	-
5	EDO	AAA	1206	-	-	1/1/1/1	-
5	EDO	AAA	1209	-	-	1/1/1/1	-

All (1) bond length outliers are listed below:

Mol	Chain	Res	Type	Atoms	Z	Observed(Å)	Ideal(Å)
4	AAA	1203	IJI	C3-N1	6.55	1.38	1.27

All (4) bond angle outliers are listed below:

Mol	Chain	Res	Type	Atoms	Z	Observed(°)	Ideal(°)
4	AAA	1203	IJI	C6-C5-C4	3.93	119.48	109.75
4	AAA	1203	IJI	C1-C2-C3	-2.66	117.12	122.28
4	AAA	1203	IJI	C7-C8-N2	2.61	119.67	112.21
4	AAA	1203	IJI	C6-C7-C8	2.07	118.28	112.05

There are no chirality outliers.

All (11) torsion outliers are listed below:

Mol	Chain	Res	Type	Atoms
4	AAA	1203	IJI	C7-C8-N2-C9
4	AAA	1203	IJI	N3-C9-N2-C8
4	AAA	1203	IJI	N4-C9-N2-C8
4	AAA	1203	IJI	C11-C10-N5-C5
4	AAA	1203	IJI	O2-C10-N5-C5
4	AAA	1203	IJI	C2-C3-N1-C4

*Continued on next page...*

*Continued from previous page...*

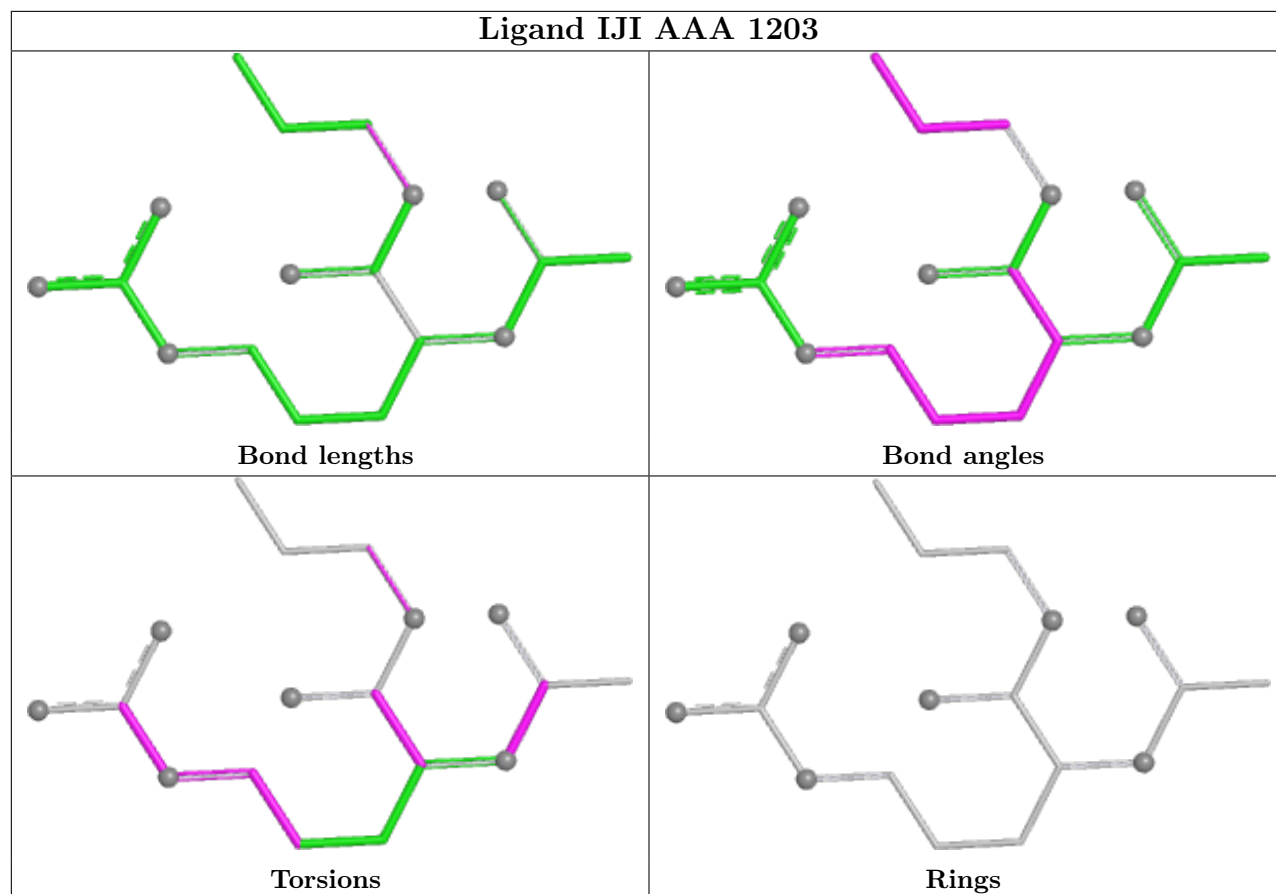
Mol	Chain	Res	Type	Atoms
4	AAA	1203	IJI	C6-C7-C8-N2
5	AAA	1206	EDO	O1-C1-C2-O2
5	AAA	1207	EDO	O1-C1-C2-O2
5	AAA	1209	EDO	O1-C1-C2-O2
4	AAA	1203	IJI	N1-C4-C5-C6

There are no ring outliers.

4 monomers are involved in 13 short contacts:

Mol	Chain	Res	Type	Clashes	Symm-Clashes
5	AAA	1205	EDO	4	0
2	AAA	1201	SO4	1	0
4	AAA	1203	IJI	2	2
5	AAA	1209	EDO	4	0

The following is a two-dimensional graphical depiction of Mogul quality analysis of bond lengths, bond angles, torsion angles, and ring geometry for all instances of the Ligand of Interest. In addition, ligands with molecular weight > 250 and outliers as shown on the validation Tables will also be included. For torsion angles, if less than 5% of the Mogul distribution of torsion angles is within 10 degrees of the torsion angle in question, then that torsion angle is considered an outlier. Any bond that is central to one or more torsion angles identified as an outlier by Mogul will be highlighted in the graph. For rings, the root-mean-square deviation (RMSD) between the ring in question and similar rings identified by Mogul is calculated over all ring torsion angles. If the average RMSD is greater than 60 degrees and the minimal RMSD between the ring in question and any Mogul-identified rings is also greater than 60 degrees, then that ring is considered an outlier. The outliers are highlighted in purple. The color gray indicates Mogul did not find sufficient equivalents in the CSD to analyse the geometry.



## 5.7 Other polymers [i](#)

There are no such residues in this entry.

## 5.8 Polymer linkage issues [i](#)

There are no chain breaks in this entry.

## 6 Fit of model and data [i](#)

### 6.1 Protein, DNA and RNA chains [i](#)

In the following table, the column labelled ‘#RSRZ> 2’ contains the number (and percentage) of RSRZ outliers, followed by percent RSRZ outliers for the chain as percentile scores relative to all X-ray entries and entries of similar resolution. The OWAB column contains the minimum, median, 95<sup>th</sup> percentile and maximum values of the occupancy-weighted average B-factor per residue. The column labelled ‘Q< 0.9’ lists the number of (and percentage) of residues with an average occupancy less than 0.9.

Mol	Chain	Analysed	<RSRZ>	#RSRZ>2	OWAB(Å <sup>2</sup> )	Q<0.9
1	AAA	130/130 (100%)	0.20	8 (6%) 20 22	19, 27, 63, 99	0

All (8) RSRZ outliers are listed below:

Mol	Chain	Res	Type	RSRZ
1	AAA	980	MET	4.8
1	AAA	1018	VAL	3.6
1	AAA	1014	ASP	3.4
1	AAA	1016	ASP	3.3
1	AAA	1017	GLU	3.1
1	AAA	1019	PRO	2.7
1	AAA	1108	ARG	2.7
1	AAA	1013	VAL	2.2

### 6.2 Non-standard residues in protein, DNA, RNA chains [i](#)

There are no non-standard protein/DNA/RNA residues in this entry.

### 6.3 Carbohydrates [i](#)

There are no monosaccharides in this entry.

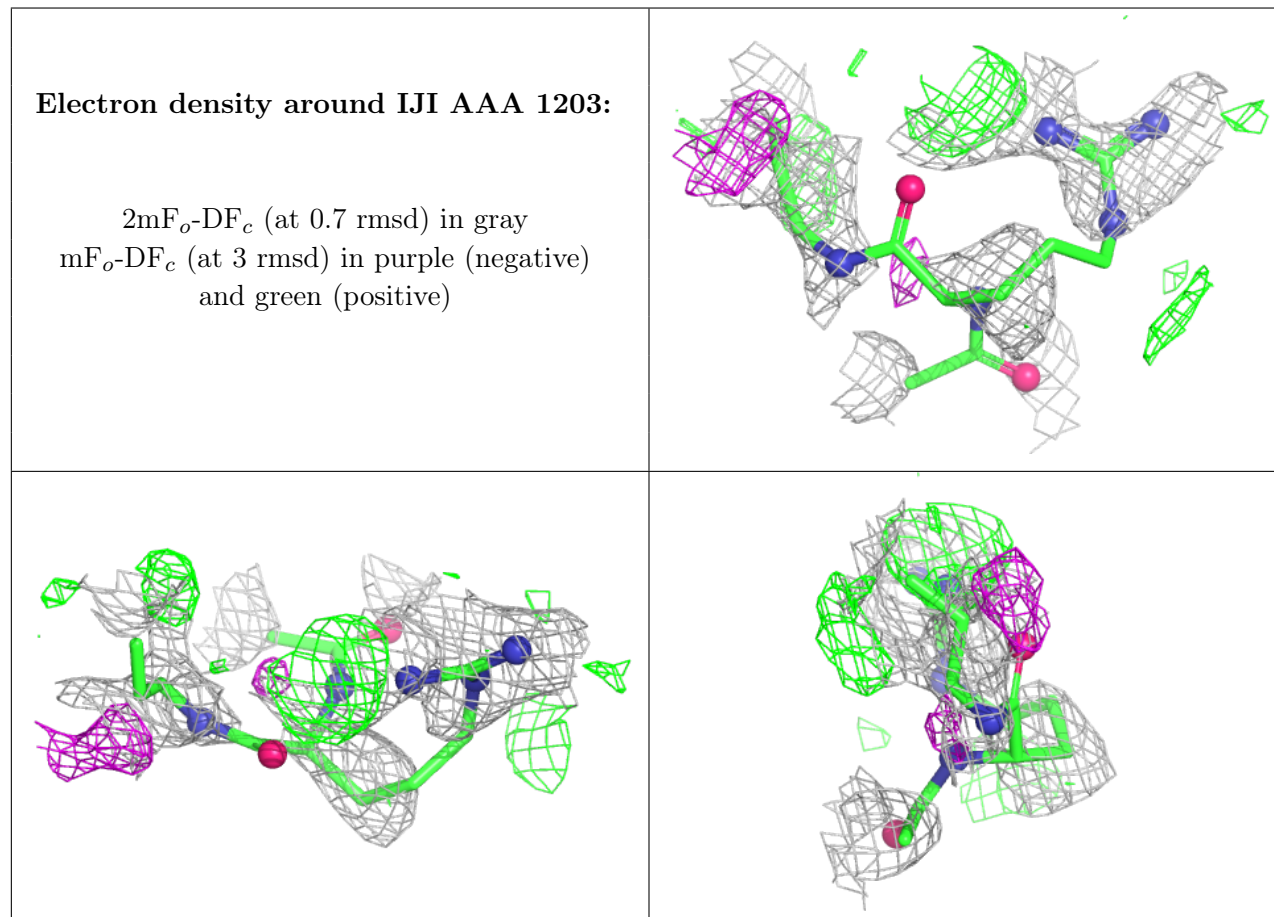
### 6.4 Ligands [i](#)

In the following table, the Atoms column lists the number of modelled atoms in the group and the number defined in the chemical component dictionary. The B-factors column lists the minimum, median, 95<sup>th</sup> percentile and maximum values of B factors of atoms in the group. The column labelled ‘Q< 0.9’ lists the number of atoms with occupancy less than 0.9.



Mol	Type	Chain	Res	Atoms	RSCC	RSR	B-factors( $\text{\AA}^2$ )	Q<0.9
5	EDO	AAA	1209	4/4	0.60	0.32	69,71,74,74	0
4	IJI	AAA	1203	18/18	0.69	0.41	64,93,111,134	0
5	EDO	AAA	1205	4/4	0.77	0.16	61,65,67,69	0
5	EDO	AAA	1206	4/4	0.80	0.19	45,48,49,53	0
5	EDO	AAA	1207	4/4	0.86	0.17	53,60,68,69	0
5	EDO	AAA	1208	4/4	0.89	0.13	40,49,51,62	0
3	CL	AAA	1202	1/1	0.89	0.06	66,66,66,66	0
2	SO4	AAA	1210	5/5	0.92	0.10	73,75,80,82	5
5	EDO	AAA	1204	4/4	0.98	0.08	21,24,28,30	0
2	SO4	AAA	1201	5/5	0.98	0.08	32,37,38,48	0

The following is a graphical depiction of the model fit to experimental electron density of all instances of the Ligand of Interest. In addition, ligands with molecular weight > 250 and outliers as shown on the geometry validation Tables will also be included. Each fit is shown from different orientation to approximate a three-dimensional view.



## 6.5 Other polymers [\(i\)](#)

There are no such residues in this entry.