



Full wwPDB X-ray Structure Validation Report ⓘ

May 17, 2021 – 03:05 pm BST

PDB ID : 6Z2F
Title : Crystal structure of human AGX1 mutant complexed with UDPGLCNAC
Authors : Chen, X.; van Aalten, D.M.F.
Deposited on : 2020-05-15
Resolution : 1.70 Å(reported)

This is a Full wwPDB X-ray Structure Validation Report for a publicly released PDB entry.

We welcome your comments at validation@mail.wwpdb.org

A user guide is available at

<https://www.wwpdb.org/validation/2017/XrayValidationReportHelp>

with specific help available everywhere you see the ⓘ symbol.

The following versions of software and data (see [references ⓘ](#)) were used in the production of this report:

MolProbity : 4.02b-467
Mogul : 1.8.5 (274361), CSD as541be (2020)
Xtriage (Phenix) : 1.13
EDS : 2.18
buster-report : 1.1.7 (2018)
Percentile statistics : 20191225.v01 (using entries in the PDB archive December 25th 2019)
Refmac : 5.8.0158
CCP4 : 7.0.044 (Gargrove)
Ideal geometry (proteins) : Engh & Huber (2001)
Ideal geometry (DNA, RNA) : Parkinson et al. (1996)
Validation Pipeline (wwPDB-VP) : 2.18

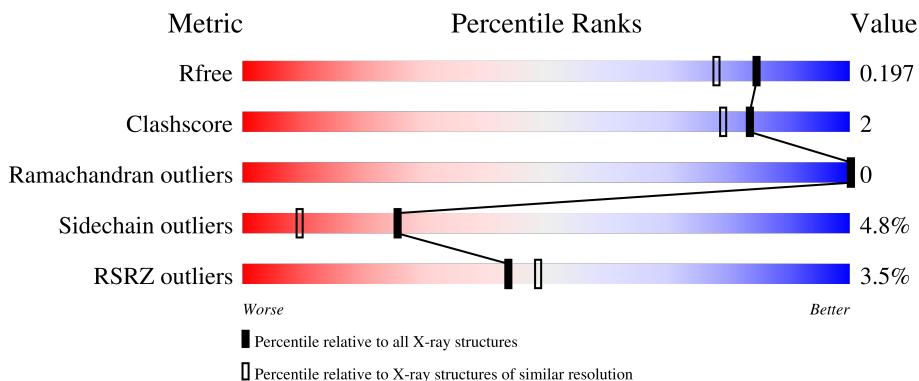
1 Overall quality at a glance

The following experimental techniques were used to determine the structure:

X-RAY DIFFRACTION

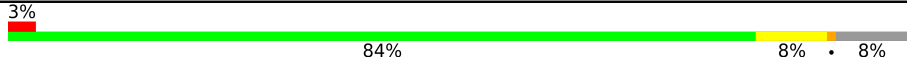
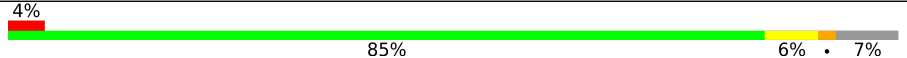
The reported resolution of this entry is 1.70 Å.

Percentile scores (ranging between 0-100) for global validation metrics of the entry are shown in the following graphic. The table shows the number of entries on which the scores are based.



Metric	Whole archive (#Entries)	Similar resolution (#Entries, resolution range(Å))
R_{free}	130704	4298 (1.70-1.70)
Clashscore	141614	4695 (1.70-1.70)
Ramachandran outliers	138981	4610 (1.70-1.70)
Sidechain outliers	138945	4610 (1.70-1.70)
RSRZ outliers	127900	4222 (1.70-1.70)

The table below summarises the geometric issues observed across the polymeric chains and their fit to the electron density. The red, orange, yellow and green segments of the lower bar indicate the fraction of residues that contain outliers for ≥ 3 , 2, 1 and 0 types of geometric quality criteria respectively. A grey segment represents the fraction of residues that are not modelled. The numeric value for each fraction is indicated below the corresponding segment, with a dot representing fractions $\leq 5\%$. The upper red bar (where present) indicates the fraction of residues that have poor fit to the electron density. The numeric value is given above the bar.

Mol	Chain	Length	Quality of chain
1	A	509	 3% 84% 8% • 8%
2	B	509	 4% 85% 6% • 7%

The following table lists non-polymeric compounds, carbohydrate monomers and non-standard residues in protein, DNA, RNA chains that are outliers for geometric or electron-density-fit criteria:

Mol	Type	Chain	Res	Chirality	Geometry	Clashes	Electron density
3	UD1	A	601	X	-	-	-
3	UD1	B	601	X	-	-	-

2 Entry composition [i](#)

There are 4 unique types of molecules in this entry. The entry contains 8314 atoms, of which 0 are hydrogens and 0 are deuteriums.

In the tables below, the ZeroOcc column contains the number of atoms modelled with zero occupancy, the AltConf column contains the number of residues with at least one atom in alternate conformation and the Trace column contains the number of residues modelled with at most 2 atoms.

- Molecule 1 is a protein called UDP-N-acetylhexosamine pyrophosphorylase.

Mol	Chain	Residues	Atoms					ZeroOcc	AltConf	Trace
			Total	C	N	O	S			
1	A	469	3745	2407	630	690	18	0	0	0

There are 6 discrepancies between the modelled and reference sequences:

Chain	Residue	Modelled	Actual	Comment	Reference
A	-3	GLY	-	expression tag	UNP Q16222
A	-2	PRO	-	expression tag	UNP Q16222
A	-1	GLU	-	expression tag	UNP Q16222
A	0	LEU	-	expression tag	UNP Q16222
A	61	TYR	HIS	conflict	UNP Q16222
A	229	THR	ALA	engineered mutation	UNP Q16222

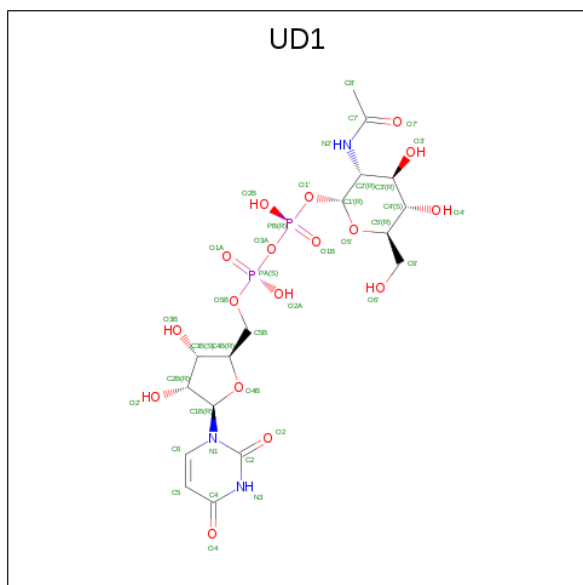
- Molecule 2 is a protein called UDP-N-acetylhexosamine pyrophosphorylase.

Mol	Chain	Residues	Atoms					ZeroOcc	AltConf	Trace
			Total	C	N	O	S			
2	B	475	3790	2434	642	696	18	0	0	0

There are 6 discrepancies between the modelled and reference sequences:

Chain	Residue	Modelled	Actual	Comment	Reference
B	-3	GLY	-	expression tag	UNP Q16222
B	-2	PRO	-	expression tag	UNP Q16222
B	-1	GLU	-	expression tag	UNP Q16222
B	0	LEU	-	expression tag	UNP Q16222
B	61	TYR	HIS	conflict	UNP Q16222
B	229	THR	ALA	engineered mutation	UNP Q16222

- Molecule 3 is URIDINE-DIPHOSPHATE-N-ACETYLGLUCOSAMINE (three-letter code: UD1) (formula: C₁₇H₂₇N₃O₁₇P₂).



Mol	Chain	Residues	Atoms				ZeroOcc	AltConf	
			Total	C	N	O			P
3	A	1	39	17	3	17	2	0	0
3	B	1	39	17	3	17	2	0	0

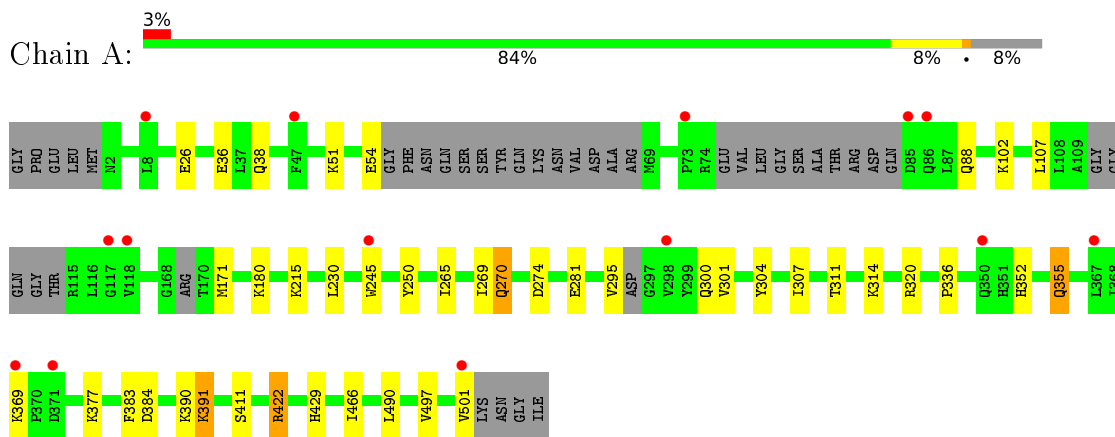
- Molecule 4 is water.

Mol	Chain	Residues	Atoms		ZeroOcc	AltConf
			Total	O		
4	A	337	337	337	0	0
4	B	364	364	364	0	0

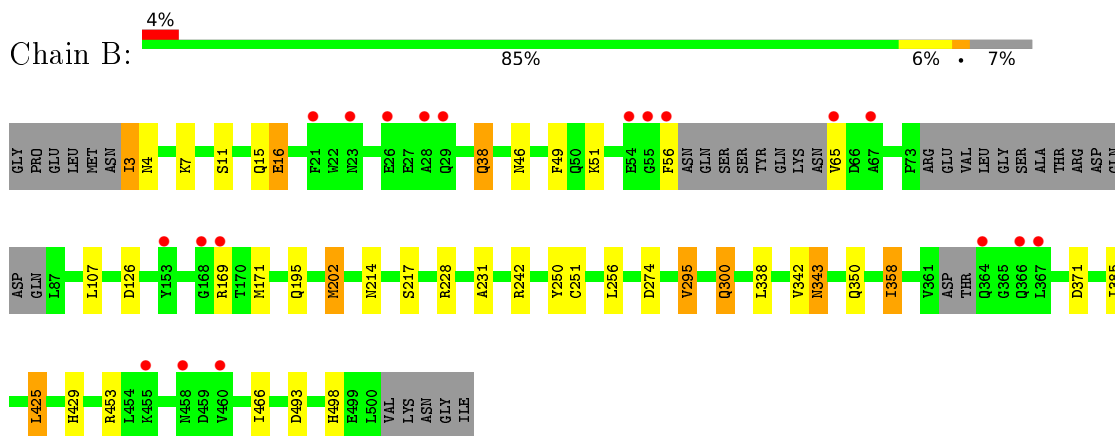
3 Residue-property plots [i](#)

These plots are drawn for all protein, RNA, DNA and oligosaccharide chains in the entry. The first graphic for a chain summarises the proportions of the various outlier classes displayed in the second graphic. The second graphic shows the sequence view annotated by issues in geometry and electron density. Residues are color-coded according to the number of geometric quality criteria for which they contain at least one outlier: green = 0, yellow = 1, orange = 2 and red = 3 or more. A red dot above a residue indicates a poor fit to the electron density ($RSRZ > 2$). Stretches of 2 or more consecutive residues without any outlier are shown as a green connector. Residues present in the sample, but not in the model, are shown in grey.

- Molecule 1: UDP-N-acetylhexosamine pyrophosphorylase



- Molecule 2: UDP-N-acetylhexosamine pyrophosphorylase



4 Data and refinement statistics

Property	Value	Source
Space group	P 1	Depositor
Cell constants a, b, c, α , β , γ	45.61Å 64.57Å 82.07Å 95.63° 101.09° 104.93°	Depositor
Resolution (Å)	29.26 – 1.70 29.26 – 1.70	Depositor EDS
% Data completeness (in resolution range)	96.5 (29.26-1.70) 96.6 (29.26-1.70)	Depositor EDS
R_{merge}	0.04	Depositor
R_{sym}	(Not available)	Depositor
$\langle I/\sigma(I) \rangle$ ¹	2.00 (at 1.70Å)	Xtrriage
Refinement program	REFMAC 5.8.0158	Depositor
R, R_{free}	0.187 , 0.226 0.197 , 0.197	Depositor DCC
R_{free} test set	4633 reflections (4.96%)	wwPDB-VP
Wilson B-factor (Å ²)	20.1	Xtrriage
Anisotropy	0.249	Xtrriage
Bulk solvent k_{sol} (e/Å ³), B_{sol} (Å ²)	0.36 , 43.7	EDS
L-test for twinning ²	$\langle L \rangle = 0.49$, $\langle L^2 \rangle = 0.32$	Xtrriage
Estimated twinning fraction	No twinning to report.	Xtrriage
F_o, F_c correlation	0.96	EDS
Total number of atoms	8314	wwPDB-VP
Average B, all atoms (Å ²)	25.0	wwPDB-VP

Xtrriage's analysis on translational NCS is as follows: *The largest off-origin peak in the Patterson function is 5.46% of the height of the origin peak. No significant pseudotranslation is detected.*

¹Intensities estimated from amplitudes.

²Theoretical values of $\langle |L| \rangle$, $\langle L^2 \rangle$ for acentric reflections are 0.5, 0.333 respectively for untwinned datasets, and 0.375, 0.2 for perfectly twinned datasets.

5 Model quality [i](#)

5.1 Standard geometry [i](#)

Bond lengths and bond angles in the following residue types are not validated in this section: UD1, YCM

The Z score for a bond length (or angle) is the number of standard deviations the observed value is removed from the expected value. A bond length (or angle) with $|Z| > 5$ is considered an outlier worth inspection. RMSZ is the root-mean-square of all Z scores of the bond lengths (or angles).

Mol	Chain	Bond lengths		Bond angles	
		RMSZ	# Z >5	RMSZ	# Z >5
1	A	0.50	0/3826	0.71	2/5168 (0.0%)
2	B	0.54	0/3863	0.77	3/5216 (0.1%)
All	All	0.52	0/7689	0.74	5/10384 (0.0%)

There are no bond length outliers.

All (5) bond angle outliers are listed below:

Mol	Chain	Res	Type	Atoms	Z	Observed(°)	Ideal(°)
1	A	274	ASP	CB-CG-OD1	5.75	123.47	118.30
2	B	242	ARG	NE-CZ-NH1	5.50	123.05	120.30
2	B	126	ASP	CB-CG-OD1	5.38	123.15	118.30
1	A	422	ARG	NE-CZ-NH1	5.26	122.93	120.30
2	B	274	ASP	CB-CG-OD1	5.13	122.92	118.30

There are no chirality outliers.

There are no planarity outliers.

5.2 Too-close contacts [i](#)

In the following table, the Non-H and H(model) columns list the number of non-hydrogen atoms and hydrogen atoms in the chain respectively. The H(added) column lists the number of hydrogen atoms added and optimized by MolProbity. The Clashes column lists the number of clashes within the asymmetric unit, whereas Symm-Clashes lists symmetry-related clashes.

Mol	Chain	Non-H	H(model)	H(added)	Clashes	Symm-Clashes
1	A	3745	0	3713	21	0
2	B	3790	0	3761	15	0
3	A	39	0	24	0	0
3	B	39	0	25	0	0

Continued on next page...

Continued from previous page...

Mol	Chain	Non-H	H(model)	H(added)	Clashes	Symm-Clashes
4	A	337	0	0	4	0
4	B	364	0	0	1	0
All	All	8314	0	7523	36	0

The all-atom clashscore is defined as the number of clashes found per 1000 atoms (including hydrogen atoms). The all-atom clashscore for this structure is 2.

All (36) close contacts within the same asymmetric unit are listed below, sorted by their clash magnitude.

Atom-1	Atom-2	Interatomic distance (Å)	Clash overlap (Å)
1:A:270:GLN:HE21	1:A:270:GLN:HA	1.31	0.93
2:B:295:VAL:HG22	2:B:300:GLN:HE21	1.42	0.83
2:B:295:VAL:HG22	2:B:300:GLN:NE2	2.06	0.70
1:A:51:LYS:O	1:A:54:GLU:HG2	2.01	0.61
1:A:270:GLN:HE21	1:A:270:GLN:CA	2.09	0.61
2:B:429:HIS:CD2	2:B:466:ILE:H	2.18	0.61
1:A:429:HIS:CD2	1:A:466:ILE:H	2.21	0.58
1:A:429:HIS:HD2	1:A:466:ILE:H	1.53	0.56
2:B:49:PHE:HB2	2:B:202:MET:CE	2.34	0.56
2:B:231:ALA:HB2	2:B:342:VAL:HG13	1.87	0.55
1:A:352:HIS:HE1	1:A:384:ASP:OD2	1.90	0.54
2:B:3:ILE:N	4:B:701:HOH:O	2.42	0.52
2:B:256:LEU:HD23	2:B:425:LEU:HD23	1.94	0.49
1:A:270:GLN:HA	1:A:270:GLN:NE2	2.14	0.48
1:A:304:TYR:O	1:A:307:ILE:HG22	2.13	0.47
1:A:307:ILE:HD11	1:A:311:THR:HG22	1.95	0.47
2:B:107:LEU:HD13	2:B:250:TYR:CE2	2.50	0.47
2:B:429:HIS:HD2	2:B:466:ILE:H	1.61	0.47
1:A:36:GLU:OE1	1:A:215:LYS:NZ	2.48	0.46
1:A:490:LEU:HD11	1:A:497:VAL:HG13	1.97	0.46
2:B:11:SER:HA	2:B:16:GLU:OE1	2.15	0.46
1:A:355:GLN:NE2	4:A:702:HOH:O	2.45	0.45
1:A:102:LYS:NZ	4:A:704:HOH:O	2.49	0.45
1:A:301:VAL:HB	1:A:383:PHE:CD1	2.53	0.44
1:A:265:ILE:O	1:A:269:ILE:HG12	2.18	0.44
2:B:38:GLN:HE21	2:B:38:GLN:HA	1.83	0.44
2:B:343:ASN:HD22	2:B:343:ASN:N	2.15	0.44
1:A:295:VAL:HB	1:A:300:GLN:HG3	1.99	0.43
1:A:88:GLN:NE2	4:A:705:HOH:O	2.51	0.43
2:B:493:ASP:OD1	2:B:498:HIS:HE1	2.01	0.43
2:B:217:SER:OG	2:B:358:ILE:HD13	2.19	0.43

Continued on next page...

Continued from previous page...

Atom-1	Atom-2	Interatomic distance (Å)	Clash overlap (Å)
1:A:107:LEU:HD13	1:A:250:TYR:CE2	2.53	0.42
1:A:281:GLU:OE2	1:A:320:ARG:HD3	2.20	0.42
2:B:15:GLN:HE21	2:B:46:ASN:HD21	1.69	0.41
1:A:245:TRP:CH2	1:A:336:PRO:HG2	2.56	0.41
1:A:391:LYS:NZ	4:A:707:HOH:O	2.53	0.41

There are no symmetry-related clashes.

5.3 Torsion angles [i](#)

5.3.1 Protein backbone [i](#)

In the following table, the Percentiles column shows the percent Ramachandran outliers of the chain as a percentile score with respect to all X-ray entries followed by that with respect to entries of similar resolution.

The Analysed column shows the number of residues for which the backbone conformation was analysed, and the total number of residues.

Mol	Chain	Analysed	Favoured	Allowed	Outliers	Percentiles	
1	A	457/509 (90%)	449 (98%)	8 (2%)	0	100	100
2	B	466/509 (92%)	457 (98%)	9 (2%)	0	100	100
All	All	923/1018 (91%)	906 (98%)	17 (2%)	0	100	100

There are no Ramachandran outliers to report.

5.3.2 Protein sidechains [i](#)

In the following table, the Percentiles column shows the percent sidechain outliers of the chain as a percentile score with respect to all X-ray entries followed by that with respect to entries of similar resolution.

The Analysed column shows the number of residues for which the sidechain conformation was analysed, and the total number of residues.

Mol	Chain	Analysed	Rotameric	Outliers	Percentiles	
1	A	405/437 (93%)	390 (96%)	15 (4%)	34	15
2	B	406/436 (93%)	382 (94%)	24 (6%)	19	6
All	All	811/873 (93%)	772 (95%)	39 (5%)	25	9

All (39) residues with a non-rotameric sidechain are listed below:

Mol	Chain	Res	Type
1	A	26	GLU
1	A	38	GLN
1	A	171	MET
1	A	180	LYS
1	A	230	LEU
1	A	270	GLN
1	A	314	LYS
1	A	355	GLN
1	A	369	LYS
1	A	377	LYS
1	A	390	LYS
1	A	391	LYS
1	A	411	SER
1	A	422	ARG
1	A	501	VAL
2	B	3	ILE
2	B	4	ASN
2	B	7	LYS
2	B	16	GLU
2	B	38	GLN
2	B	51	LYS
2	B	56	PHE
2	B	65	VAL
2	B	169	ARG
2	B	171	MET
2	B	195	GLN
2	B	202	MET
2	B	214	ASN
2	B	228	ARG
2	B	295	VAL
2	B	300	GLN
2	B	338	LEU
2	B	343	ASN
2	B	350	GLN
2	B	358	ILE
2	B	371	ASP
2	B	385	ILE
2	B	425	LEU
2	B	453	ARG

Sometimes sidechains can be flipped to improve hydrogen bonding and reduce clashes. All (27) such sidechains are listed below:

Mol	Chain	Res	Type
1	A	88	GLN
1	A	137	GLN
1	A	148	GLN
1	A	156	ASN
1	A	270	GLN
1	A	331	HIS
1	A	343	ASN
1	A	351	HIS
1	A	352	HIS
1	A	355	GLN
1	A	387	GLN
1	A	429	HIS
1	A	463	GLN
1	A	498	HIS
2	B	4	ASN
2	B	38	GLN
2	B	46	ASN
2	B	112	GLN
2	B	137	GLN
2	B	196	GLN
2	B	214	ASN
2	B	300	GLN
2	B	331	HIS
2	B	412	GLN
2	B	429	HIS
2	B	458	ASN
2	B	498	HIS

5.3.3 RNA [i](#)

There are no RNA molecules in this entry.

5.4 Non-standard residues in protein, DNA, RNA chains [i](#)

1 non-standard protein/DNA/RNA residue is modelled in this entry.

In the following table, the Counts columns list the number of bonds (or angles) for which Mogul statistics could be retrieved, the number of bonds (or angles) that are observed in the model and the number of bonds (or angles) that are defined in the Chemical Component Dictionary. The Link column lists molecule types, if any, to which the group is linked. The Z score for a bond length (or angle) is the number of standard deviations the observed value is removed from the expected value. A bond length (or angle) with $|Z| > 2$ is considered an outlier worth inspection. RMSZ is the root-mean-square of all Z scores of the bond lengths (or angles).

Mol	Type	Chain	Res	Link	Bond lengths			Bond angles		
					Counts	RMSZ	# Z > 2	Counts	RMSZ	# Z > 2
2	YCM	B	251	2	7,9,10	1.13	1 (14%)	4,10,12	0.79	0

In the following table, the Chirals column lists the number of chiral outliers, the number of chiral centers analysed, the number of these observed in the model and the number defined in the Chemical Component Dictionary. Similar counts are reported in the Torsion and Rings columns. '-' means no outliers of that kind were identified.

Mol	Type	Chain	Res	Link	Chirals	Torsions	Rings
2	YCM	B	251	2	-	1/6/8/10	-

All (1) bond length outliers are listed below:

Mol	Chain	Res	Type	Atoms	Z	Observed(Å)	Ideal(Å)
2	B	251	YCM	CD-SG	-2.70	1.74	1.81

There are no bond angle outliers.

There are no chirality outliers.

All (1) torsion outliers are listed below:

Mol	Chain	Res	Type	Atoms
2	B	251	YCM	SG-CD-CE-NZ2

There are no ring outliers.

No monomer is involved in short contacts.

5.5 Carbohydrates [i](#)

There are no monosaccharides in this entry.

5.6 Ligand geometry [i](#)

2 ligands are modelled in this entry.

In the following table, the Counts columns list the number of bonds (or angles) for which Mogul statistics could be retrieved, the number of bonds (or angles) that are observed in the model and the number of bonds (or angles) that are defined in the Chemical Component Dictionary. The Link column lists molecule types, if any, to which the group is linked. The Z score for a bond length (or angle) is the number of standard deviations the observed value is removed from the expected value. A bond length (or angle) with $|Z| > 2$ is considered an outlier worth inspection. RMSZ is the root-mean-square of all Z scores of the bond lengths (or angles).

Mol	Type	Chain	Res	Link	Bond lengths			Bond angles		
					Counts	RMSZ	# Z > 2	Counts	RMSZ	# Z > 2
3	UD1	B	601	-	34,41,41	2.03	7 (20%)	45,62,62	2.92	21 (46%)
3	UD1	A	601	-	34,41,41	2.13	10 (29%)	45,62,62	3.04	13 (28%)

In the following table, the Chirals column lists the number of chiral outliers, the number of chiral centers analysed, the number of these observed in the model and the number defined in the Chemical Component Dictionary. Similar counts are reported in the Torsion and Rings columns. '-' means no outliers of that kind were identified.

Mol	Type	Chain	Res	Link	Chirals	Torsions	Rings
3	UD1	B	601	-	2/2/12/13	4/24/63/63	0/3/3/3
3	UD1	A	601	-	3/3/12/13	4/24/63/63	0/3/3/3

All (17) bond length outliers are listed below:

Mol	Chain	Res	Type	Atoms	Z	Observed(Å)	Ideal(Å)
3	B	601	UD1	O3B-C3B	5.68	1.56	1.43
3	A	601	UD1	C6-N1	5.67	1.42	1.35
3	A	601	UD1	C4'-C5'	4.92	1.63	1.53
3	B	601	UD1	C4-N3	4.91	1.41	1.33
3	B	601	UD1	C6-N1	4.05	1.40	1.35
3	B	601	UD1	C4'-C5'	4.05	1.61	1.53
3	A	601	UD1	C1'-C2'	-3.84	1.46	1.53
3	A	601	UD1	C4-N3	3.78	1.39	1.33
3	A	601	UD1	O4B-C1B	3.27	1.45	1.41
3	A	601	UD1	PB-O1B	3.13	1.62	1.50
3	B	601	UD1	C3B-C4B	3.09	1.60	1.53
3	B	601	UD1	PA-O2A	-3.02	1.41	1.55
3	A	601	UD1	C2'-N2'	2.92	1.50	1.45
3	A	601	UD1	C2B-C1B	-2.92	1.49	1.53
3	B	601	UD1	O5'-C1'	-2.63	1.35	1.41
3	A	601	UD1	PA-O1A	2.38	1.59	1.50
3	A	601	UD1	C4'-C3'	-2.14	1.46	1.52

All (34) bond angle outliers are listed below:

Mol	Chain	Res	Type	Atoms	Z	Observed(°)	Ideal(°)
3	A	601	UD1	O5'-C1'-O1'	14.34	130.10	111.36
3	B	601	UD1	O5'-C1'-O1'	12.58	127.80	111.36
3	A	601	UD1	C1'-O5'-C5'	-6.53	100.87	113.69
3	A	601	UD1	O3A-PB-O1'	5.99	114.57	102.48
3	B	601	UD1	C1'-O5'-C5'	-5.65	102.59	113.69

Continued on next page...

Continued from previous page...

Mol	Chain	Res	Type	Atoms	Z	Observed(°)	Ideal(°)
3	A	601	UD1	O1'-C1'-C2'	5.56	118.45	108.40
3	B	601	UD1	O2A-PA-O5B	4.40	128.20	107.75
3	B	601	UD1	C3'-C4'-C5'	4.29	117.90	110.24
3	B	601	UD1	O4B-C4B-C5B	-4.29	95.26	109.37
3	B	601	UD1	O3B-C3B-C4B	3.74	121.86	111.05
3	A	601	UD1	O3'-C3'-C2'	3.64	117.00	109.66
3	B	601	UD1	C3'-C2'-N2'	3.55	117.32	110.62
3	B	601	UD1	O1'-C1'-C2'	3.46	114.66	108.40
3	A	601	UD1	O2B-PB-O1B	-3.31	95.87	112.24
3	A	601	UD1	PB-O1'-C1'	3.01	131.36	119.74
3	A	601	UD1	C3'-C2'-N2'	2.99	116.26	110.62
3	B	601	UD1	O3'-C3'-C2'	2.94	115.60	109.66
3	B	601	UD1	C3B-C2B-C1B	2.87	105.31	100.98
3	B	601	UD1	C2'-N2'-C7'	-2.71	116.59	123.18
3	B	601	UD1	PB-O1'-C1'	2.66	130.01	119.74
3	A	601	UD1	C2'-N2'-C7'	-2.53	117.02	123.18
3	B	601	UD1	O4'-C4'-C3'	2.40	115.89	110.35
3	A	601	UD1	O4'-C4'-C5'	2.39	115.23	109.30
3	B	601	UD1	C2B-C3B-C4B	-2.26	98.26	102.64
3	A	601	UD1	C3'-C4'-C5'	2.22	114.21	110.24
3	B	601	UD1	C1'-C2'-N2'	2.14	114.69	111.00
3	B	601	UD1	C5-C4-N3	-2.14	118.60	123.31
3	B	601	UD1	C6'-C5'-C4'	2.14	118.01	113.00
3	B	601	UD1	O5'-C5'-C4'	2.13	113.57	109.69
3	B	601	UD1	O1'-PB-O1B	-2.12	101.51	109.47
3	B	601	UD1	O2B-PB-O1'	2.11	115.09	106.78
3	A	601	UD1	O5'-C5'-C4'	2.04	113.41	109.69
3	A	601	UD1	O5B-PA-O1A	-2.01	101.23	109.07
3	B	601	UD1	O6'-C6'-C5'	-2.00	104.43	111.29

All (5) chirality outliers are listed below:

Mol	Chain	Res	Type	Atom
3	A	601	UD1	C1'
3	A	601	UD1	C4'
3	A	601	UD1	C3'
3	B	601	UD1	C3'
3	B	601	UD1	C4'

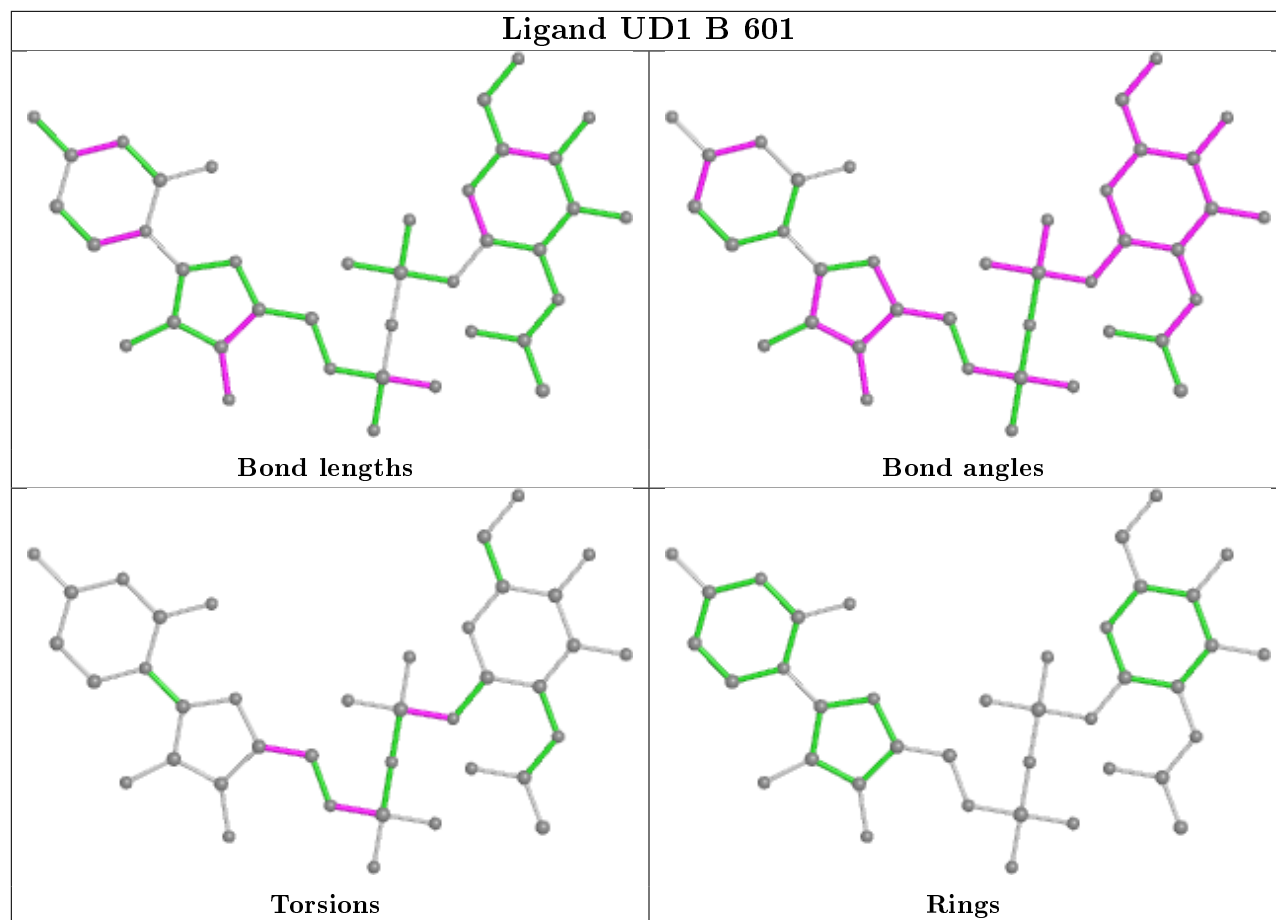
All (8) torsion outliers are listed below:

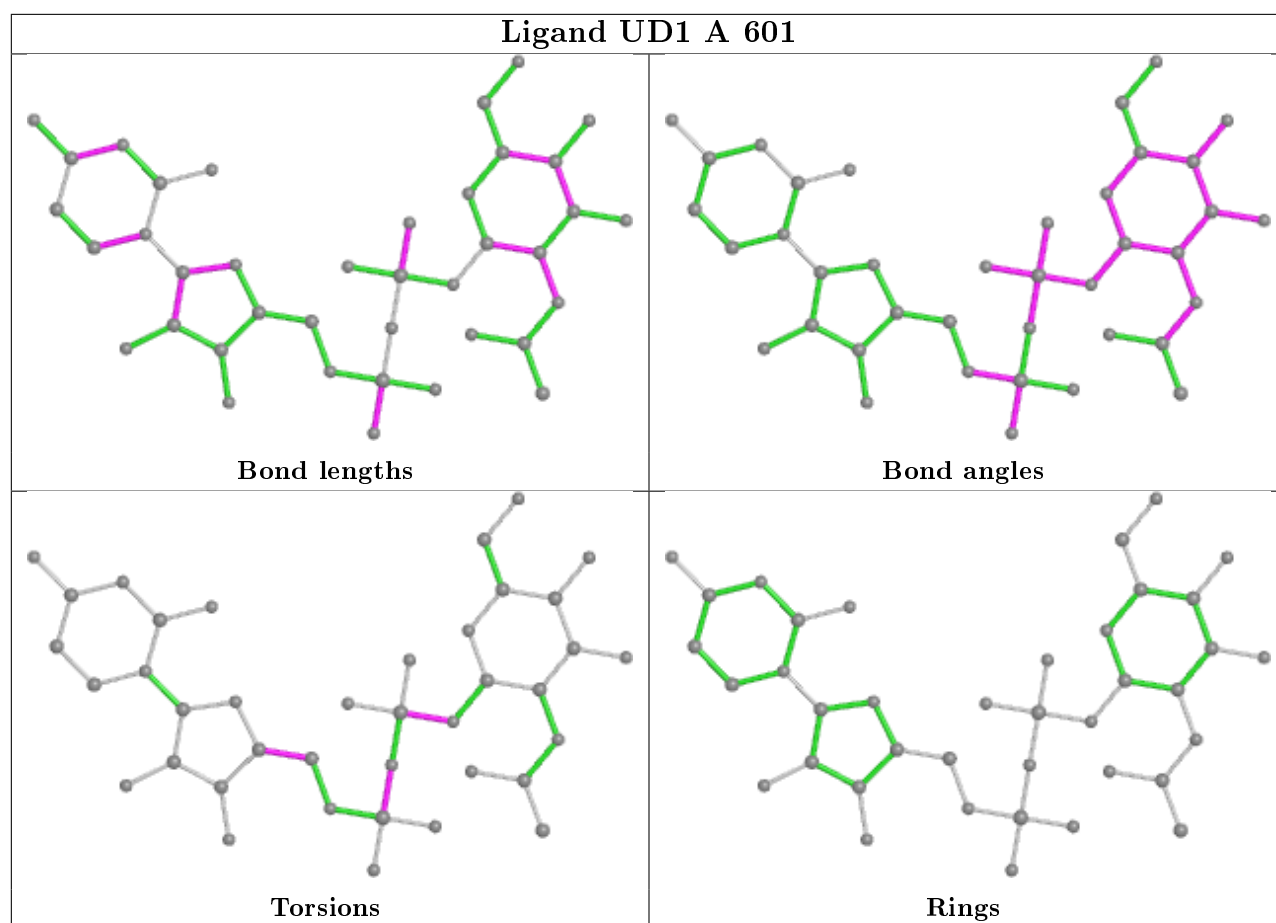
Mol	Chain	Res	Type	Atoms
3	A	601	UD1	C3B-C4B-C5B-O5B
3	A	601	UD1	O4B-C4B-C5B-O5B
3	B	601	UD1	C5B-O5B-PA-O2A
3	B	601	UD1	C1'-O1'-PB-O3A
3	B	601	UD1	C3B-C4B-C5B-O5B
3	B	601	UD1	O4B-C4B-C5B-O5B
3	A	601	UD1	C1'-O1'-PB-O3A
3	A	601	UD1	PB-O3A-PA-O1A

There are no ring outliers.

No monomer is involved in short contacts.

The following is a two-dimensional graphical depiction of Mogul quality analysis of bond lengths, bond angles, torsion angles, and ring geometry for all instances of the Ligand of Interest. In addition, ligands with molecular weight > 250 and outliers as shown on the validation Tables will also be included. For torsion angles, if less than 5% of the Mogul distribution of torsion angles is within 10 degrees of the torsion angle in question, then that torsion angle is considered an outlier. Any bond that is central to one or more torsion angles identified as an outlier by Mogul will be highlighted in the graph. For rings, the root-mean-square deviation (RMSD) between the ring in question and similar rings identified by Mogul is calculated over all ring torsion angles. If the average RMSD is greater than 60 degrees and the minimal RMSD between the ring in question and any Mogul-identified rings is also greater than 60 degrees, then that ring is considered an outlier. The outliers are highlighted in purple. The color gray indicates Mogul did not find sufficient equivalents in the CSD to analyse the geometry.





5.7 Other polymers [i](#)

There are no such residues in this entry.

5.8 Polymer linkage issues [i](#)

There are no chain breaks in this entry.

6 Fit of model and data

6.1 Protein, DNA and RNA chains

In the following table, the column labelled '#RSRZ > 2' contains the number (and percentage) of RSRZ outliers, followed by percent RSRZ outliers for the chain as percentile scores relative to all X-ray entries and entries of similar resolution. The OWAB column contains the minimum, median, 95th percentile and maximum values of the occupancy-weighted average B-factor per residue. The column labelled 'Q < 0.9' lists the number of (and percentage) of residues with an average occupancy less than 0.9.

Mol	Chain	Analysed	<RSRZ>	#RSRZ > 2		OWAB(Å ²)	Q < 0.9
1	A	469/509 (92%)	0.09	14 (2%)	50 54	13, 23, 40, 59	0
2	B	474/509 (93%)	0.19	19 (4%)	38 42	11, 21, 44, 67	0
All	All	943/1018 (92%)	0.14	33 (3%)	44 49	11, 22, 42, 67	0

All (33) RSRZ outliers are listed below:

Mol	Chain	Res	Type	RSRZ
2	B	56	PHE	4.6
2	B	458	ASN	4.6
1	A	501	VAL	4.5
2	B	153	TYR	4.2
1	A	371	ASP	3.8
2	B	367	LEU	3.7
2	B	28	ALA	3.7
1	A	73	PRO	3.2
1	A	369	LYS	3.2
2	B	169	ARG	3.1
2	B	460	VAL	2.9
2	B	21	PHE	2.8
2	B	366	GLN	2.8
1	A	85	ASP	2.8
1	A	298	VAL	2.7
2	B	54	GLU	2.7
2	B	364	GLN	2.6
1	A	245	TRP	2.6
2	B	23	ASN	2.5
2	B	67	ALA	2.5
2	B	29	GLN	2.5
2	B	55	GLY	2.4
2	B	168	GLY	2.3
1	A	8	LEU	2.3

Continued on next page...

Continued from previous page...

Mol	Chain	Res	Type	RSRZ
1	A	86	GLN	2.2
1	A	117	GLY	2.2
1	A	350	GLN	2.1
1	A	118	VAL	2.1
2	B	65	VAL	2.1
1	A	47	PHE	2.1
2	B	455	LYS	2.1
1	A	367	LEU	2.1
2	B	26	GLU	2.0

6.2 Non-standard residues in protein, DNA, RNA chains [i](#)

In the following table, the Atoms column lists the number of modelled atoms in the group and the number defined in the chemical component dictionary. The B-factors column lists the minimum, median, 95th percentile and maximum values of B factors of atoms in the group. The column labelled 'Q< 0.9' lists the number of atoms with occupancy less than 0.9.

Mol	Type	Chain	Res	Atoms	RSCC	RSR	B-factors(Å ²)	Q<0.9
2	YCM	B	251	10/11	0.97	0.10	12,14,22,22	0

6.3 Carbohydrates [i](#)

There are no monosaccharides in this entry.

6.4 Ligands [i](#)

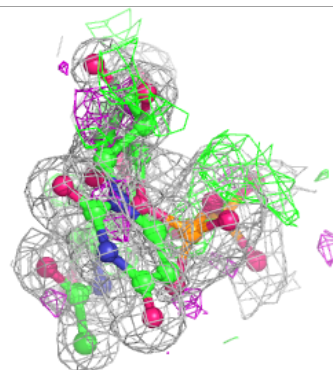
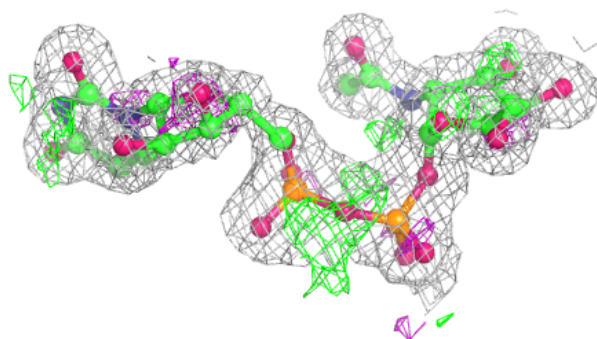
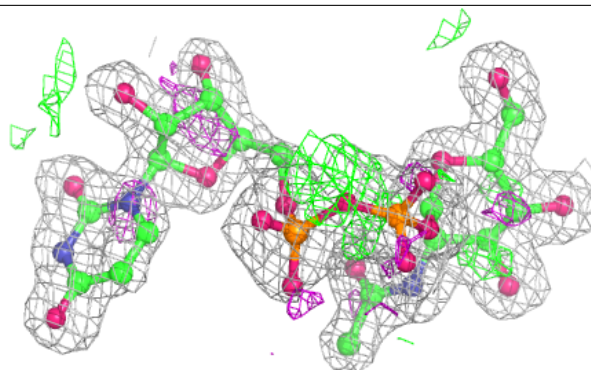
In the following table, the Atoms column lists the number of modelled atoms in the group and the number defined in the chemical component dictionary. The B-factors column lists the minimum, median, 95th percentile and maximum values of B factors of atoms in the group. The column labelled 'Q< 0.9' lists the number of atoms with occupancy less than 0.9.

Mol	Type	Chain	Res	Atoms	RSCC	RSR	B-factors(Å ²)	Q<0.9
3	UD1	A	601	39/39	0.91	0.12	14,25,33,39	0
3	UD1	B	601	39/39	0.93	0.10	14,19,27,31	0

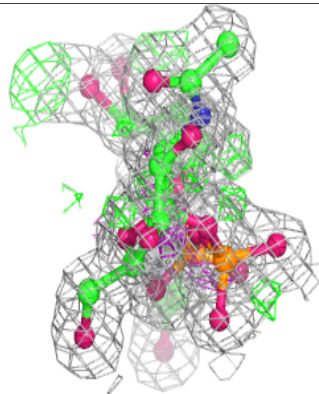
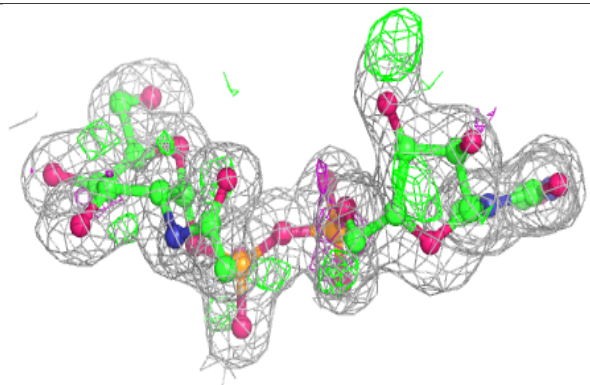
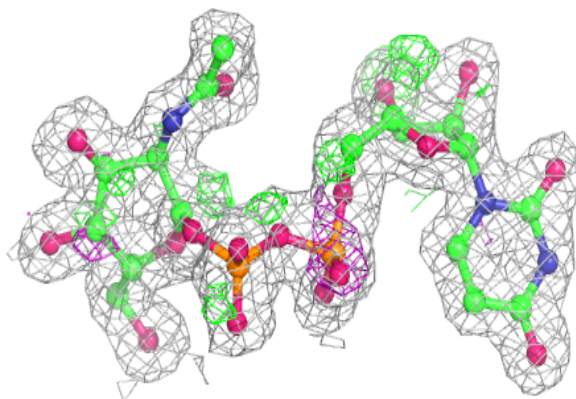
The following is a graphical depiction of the model fit to experimental electron density of all instances of the Ligand of Interest. In addition, ligands with molecular weight > 250 and outliers as shown on the geometry validation Tables will also be included. Each fit is shown from different orientation to approximate a three-dimensional view.

Electron density around UD1 A 601:

$2mF_o-DF_c$ (at 0.7 rmsd) in gray
 mF_o-DF_c (at 3 rmsd) in purple (negative)
and green (positive)

**Electron density around UD1 B 601:**

$2mF_o-DF_c$ (at 0.7 rmsd) in gray
 mF_o-DF_c (at 3 rmsd) in purple (negative)
and green (positive)



6.5 Other polymers

There are no such residues in this entry.