



# Full wwPDB X-ray Structure Validation Report ⓘ

Jan 11, 2021 – 10:03 am GMT

PDB ID : 6YX0  
Title : Crystal structure of SHANK1 PDZ in complex with a peptide-small molecule hybrid  
Authors : Hegedus, Z.; Hobor, F.; Shoemark, D.K.; Celis, S.; Trinh, C.H.; Sessions, R.B.; Edwards, T.A.; Wilson, A.J.  
Deposited on : 2020-04-30  
Resolution : 1.57 Å(reported)

This is a Full wwPDB X-ray Structure Validation Report for a publicly released PDB entry.

We welcome your comments at [validation@mail.wwpdb.org](mailto:validation@mail.wwpdb.org)

A user guide is available at

<https://www.wwpdb.org/validation/2017/XrayValidationReportHelp>

with specific help available everywhere you see the ⓘ symbol.

---

The following versions of software and data (see [references ⓘ](#)) were used in the production of this report:

MolProbity : 4.02b-467  
Mogul : 1.8.5 (274361), CSD as541be (2020)  
Xtriage (Phenix) : 1.13  
EDS : 2.16  
buster-report : 1.1.7 (2018)  
Percentile statistics : 20191225.v01 (using entries in the PDB archive December 25th 2019)  
Refmac : 5.8.0158  
CCP4 : 7.0.044 (Gargrove)  
Ideal geometry (proteins) : Engh & Huber (2001)  
Ideal geometry (DNA, RNA) : Parkinson et al. (1996)  
Validation Pipeline (wwPDB-VP) : 2.16

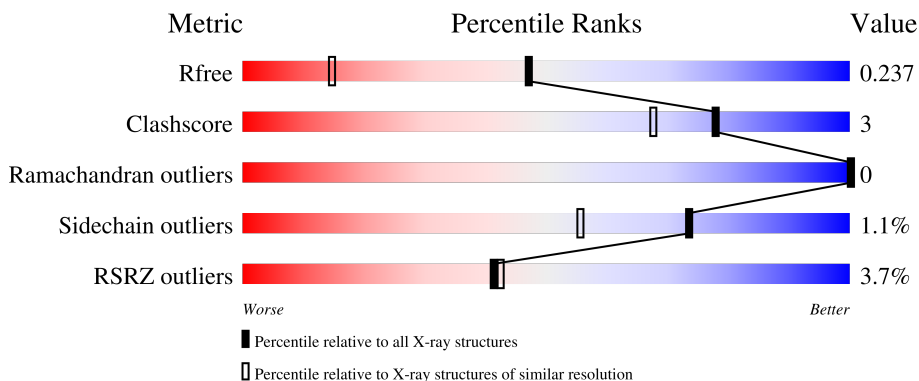
# 1 Overall quality at a glance i

The following experimental techniques were used to determine the structure:

*X-RAY DIFFRACTION*

The reported resolution of this entry is 1.57 Å.

Percentile scores (ranging between 0-100) for global validation metrics of the entry are shown in the following graphic. The table shows the number of entries on which the scores are based.



Metric	Whole archive (#Entries)	Similar resolution (#Entries, resolution range(Å))
$R_{free}$	130704	5534 (1.60-1.56)
Clashscore	141614	5861 (1.60-1.56)
Ramachandran outliers	138981	5708 (1.60-1.56)
Sidechain outliers	138945	5703 (1.60-1.56)
RSRZ outliers	127900	5431 (1.60-1.56)

The table below summarises the geometric issues observed across the polymeric chains and their fit to the electron density. The red, orange, yellow and green segments of the lower bar indicate the fraction of residues that contain outliers for  $\geq 3$ , 2, 1 and 0 types of geometric quality criteria respectively. A grey segment represents the fraction of residues that are not modelled. The numeric value for each fraction is indicated below the corresponding segment, with a dot representing fractions  $\leq 5\%$ . The upper red bar (where present) indicates the fraction of residues that have poor fit to the electron density. The numeric value is given above the bar.

Mol	Chain	Length	Quality of chain
1	A	112	 4% 84% 6% 10%
1	B	112	 4% 92% 8%
2	C	3	 100%
2	D	3	 67% 33%

## 2 Entry composition i

There are 4 unique types of molecules in this entry. The entry contains 1926 atoms, of which 0 are hydrogens and 0 are deuteriums.

In the tables below, the ZeroOcc column contains the number of atoms modelled with zero occupancy, the AltConf column contains the number of residues with at least one atom in alternate conformation and the Trace column contains the number of residues modelled with at most 2 atoms.

- Molecule 1 is a protein called SH3 and multiple ankyrin repeat domains protein 1.

Mol	Chain	Residues	Atoms					ZeroOcc	AltConf	Trace
			Total	C	N	O	S			
1	A	101	791	505	140	141	5	0	2	0
1	B	112	866	553	153	156	4	0	1	0

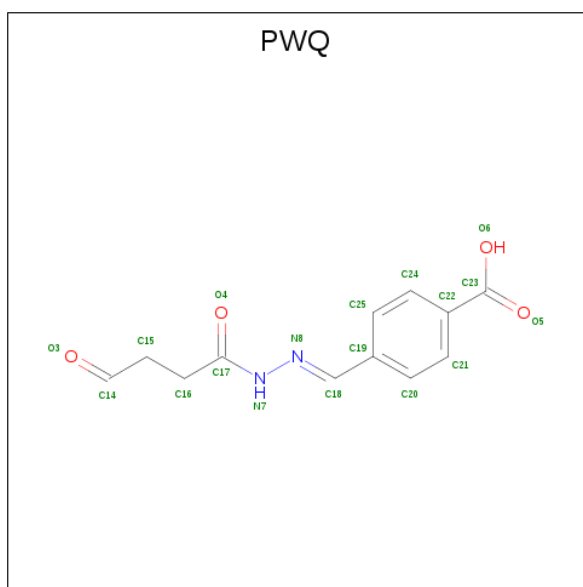
There are 6 discrepancies between the modelled and reference sequences:

Chain	Residue	Modelled	Actual	Comment	Reference
A	651	GLY	-	expression tag	UNP Q9Y566
A	652	PRO	-	expression tag	UNP Q9Y566
A	653	LEU	-	expression tag	UNP Q9Y566
B	651	GLY	-	expression tag	UNP Q9Y566
B	652	PRO	-	expression tag	UNP Q9Y566
B	653	LEU	-	expression tag	UNP Q9Y566

- Molecule 2 is a protein called PWQ-THR-ARG-LEU.

Mol	Chain	Residues	Atoms				ZeroOcc	AltConf	Trace
			Total	C	N	O			
2	C	3	27	16	6	5	0	0	0
2	D	3	27	16	6	5	0	0	0

- Molecule 3 is 4-[[2-(4-oxidanylidenebutanoyl)hydrazinyl]methyl]benzoic acid (three-letter code: PWQ) (formula: C<sub>12</sub>H<sub>12</sub>N<sub>2</sub>O<sub>4</sub>) (labeled as "Ligand of Interest" by depositor).



Mol	Chain	Residues	Atoms				ZeroOcc	AltConf
3	C	1	Total	C	N	O	0	0
			18	12	2	4		
3	D	1	Total	C	N	O	0	0
			18	12	2	4		

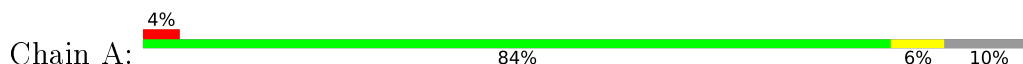
- Molecule 4 is water.

Mol	Chain	Residues	Atoms		ZeroOcc	AltConf
4	A	81	Total	O	0	0
			81	81		
4	B	92	Total	O	0	0
			92	92		
4	C	3	Total	O	0	0
			3	3		
4	D	3	Total	O	0	0
			3	3		

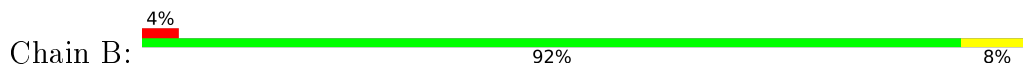
### 3 Residue-property plots [i](#)

These plots are drawn for all protein, RNA, DNA and oligosaccharide chains in the entry. The first graphic for a chain summarises the proportions of the various outlier classes displayed in the second graphic. The second graphic shows the sequence view annotated by issues in geometry and electron density. Residues are color-coded according to the number of geometric quality criteria for which they contain at least one outlier: green = 0, yellow = 1, orange = 2 and red = 3 or more. A red dot above a residue indicates a poor fit to the electron density ( $RSRZ > 2$ ). Stretches of 2 or more consecutive residues without any outlier are shown as a green connector. Residues present in the sample, but not in the model, are shown in grey.

- Molecule 1: SH3 and multiple ankyrin repeat domains protein 1



- Molecule 1: SH3 and multiple ankyrin repeat domains protein 1



- Molecule 2: PWQ-THR-ARG-LEU



There are no outlier residues recorded for this chain.

- Molecule 2: PWQ-THR-ARG-LEU



## 4 Data and refinement statistics

Property	Value	Source
Space group	P 21 21 21	Depositor
Cell constants a, b, c, $\alpha$ , $\beta$ , $\gamma$	44.30Å 64.95Å 88.28Å 90.00° 90.00° 90.00°	Depositor
Resolution (Å)	52.31 – 1.57 52.31 – 1.57	Depositor EDS
% Data completeness (in resolution range)	99.6 (52.31-1.57) 99.9 (52.31-1.57)	Depositor EDS
$R_{merge}$	0.04	Depositor
$R_{sym}$	(Not available)	Depositor
$\langle I/\sigma(I) \rangle$ <sup>1</sup>	1.87 (at 1.57Å)	Xtrriage
Refinement program	REFMAC 5.5.0026, PHENIX 1.17.1_3660	Depositor
R, $R_{free}$	0.206 , 0.231 0.213 , 0.237	Depositor DCC
$R_{free}$ test set	1835 reflections (5.06%)	wwPDB-VP
Wilson B-factor (Å <sup>2</sup> )	28.9	Xtrriage
Anisotropy	0.504	Xtrriage
Bulk solvent $k_{sol}$ (e/Å <sup>3</sup> ), $B_{sol}$ (Å <sup>2</sup> )	0.34 , 50.0	EDS
L-test for twinning <sup>2</sup>	$\langle  L  \rangle = 0.48$ , $\langle L^2 \rangle = 0.31$	Xtrriage
Estimated twinning fraction	No twinning to report.	Xtrriage
$F_o, F_c$ correlation	0.97	EDS
Total number of atoms	1926	wwPDB-VP
Average B, all atoms (Å <sup>2</sup> )	43.0	wwPDB-VP

Xtrriage's analysis on translational NCS is as follows: *The analyses of the Patterson function reveals a significant off-origin peak that is 38.99 % of the origin peak, indicating pseudo-translational symmetry. The chance of finding a peak of this or larger height randomly in a structure without pseudo-translational symmetry is equal to 3.3912e-04. The detected translational NCS is most likely also responsible for the elevated intensity ratio.*

<sup>1</sup>Intensities estimated from amplitudes.

<sup>2</sup>Theoretical values of  $\langle |L| \rangle$ ,  $\langle L^2 \rangle$  for acentric reflections are 0.5, 0.333 respectively for untwinned datasets, and 0.375, 0.2 for perfectly twinned datasets.

## 5 Model quality [i](#)

### 5.1 Standard geometry [i](#)

Bond lengths and bond angles in the following residue types are not validated in this section: PWQ

The Z score for a bond length (or angle) is the number of standard deviations the observed value is removed from the expected value. A bond length (or angle) with  $|Z| > 5$  is considered an outlier worth inspection. RMSZ is the root-mean-square of all Z scores of the bond lengths (or angles).

Mol	Chain	Bond lengths		Bond angles	
		RMSZ	# Z  >5	RMSZ	# Z  >5
1	A	0.34	0/803	0.51	0/1080
1	B	0.31	0/882	0.53	0/1192
2	C	0.28	0/26	0.49	0/32
2	D	0.30	0/26	0.67	0/32
All	All	0.33	0/1737	0.52	0/2336

There are no bond length outliers.

There are no bond angle outliers.

There are no chirality outliers.

There are no planarity outliers.

### 5.2 Too-close contacts [i](#)

In the following table, the Non-H and H(model) columns list the number of non-hydrogen atoms and hydrogen atoms in the chain respectively. The H(added) column lists the number of hydrogen atoms added and optimized by MolProbity. The Clashes column lists the number of clashes within the asymmetric unit, whereas Symm-Clashes lists symmetry-related clashes.

Mol	Chain	Non-H	H(model)	H(added)	Clashes	Symm-Clashes
1	A	791	0	808	5	0
1	B	866	0	881	5	0
2	C	27	0	30	0	0
2	D	27	0	30	0	0
3	C	18	0	0	0	0
3	D	18	0	0	0	0
4	A	81	0	0	2	0
4	B	92	0	0	0	0
4	C	3	0	0	0	0

*Continued on next page...*

Continued from previous page...

Mol	Chain	Non-H	H(model)	H(added)	Clashes	Symm-Clashes
4	D	3	0	0	0	0
All	All	1926	0	1749	10	0

The all-atom clashscore is defined as the number of clashes found per 1000 atoms (including hydrogen atoms). The all-atom clashscore for this structure is 3.

All (10) close contacts within the same asymmetric unit are listed below, sorted by their clash magnitude.

Atom-1	Atom-2	Interatomic distance (Å)	Clash overlap (Å)
1:A:758:ARG:NH1	4:A:902:HOH:O	2.35	0.59
1:B:661:GLU:HG2	1:B:754[A]:VAL:HG12	1.85	0.59
1:A:728:GLN:HB2	1:A:741:MET:HE1	1.94	0.50
1:B:661:GLU:HG2	1:B:754[B]:VAL:HG22	1.94	0.49
1:A:740:ASN:OD1	4:A:901:HOH:O	2.21	0.47
1:B:725:VAL:HG22	1:B:751:VAL:HG12	1.97	0.46
1:B:708:GLY:O	1:B:713:ARG:NH1	2.50	0.45
1:A:737:GLN:O	1:A:741:MET:HG3	2.16	0.44
1:A:709:GLY:O	1:A:713:ARG:HG3	2.17	0.44
1:B:737:GLN:O	1:B:741:MET:HG3	2.21	0.40

There are no symmetry-related clashes.

## 5.3 Torsion angles [i](#)

### 5.3.1 Protein backbone [i](#)

In the following table, the Percentiles column shows the percent Ramachandran outliers of the chain as a percentile score with respect to all X-ray entries followed by that with respect to entries of similar resolution.

The Analysed column shows the number of residues for which the backbone conformation was analysed, and the total number of residues.

Mol	Chain	Analysed	Favoured	Allowed	Outliers	Percentiles	
1	A	99/112 (88%)	99 (100%)	0	0	100	100
1	B	111/112 (99%)	110 (99%)	1 (1%)	0	100	100
2	C	1/3 (33%)	1 (100%)	0	0	100	100
2	D	1/3 (33%)	1 (100%)	0	0	100	100
All	All	212/230 (92%)	211 (100%)	1 (0%)	0	100	100



There are no Ramachandran outliers to report.

### 5.3.2 Protein sidechains [i](#)

In the following table, the Percentiles column shows the percent sidechain outliers of the chain as a percentile score with respect to all X-ray entries followed by that with respect to entries of similar resolution.

The Analysed column shows the number of residues for which the sidechain conformation was analysed, and the total number of residues.

Mol	Chain	Analysed	Rotameric	Outliers	Percentiles	
1	A	84/93 (90%)	84 (100%)	0	100	100
1	B	92/93 (99%)	91 (99%)	1 (1%)	73	55
2	C	3/3 (100%)	3 (100%)	0	100	100
2	D	3/3 (100%)	2 (67%)	1 (33%)	0	0
All	All	182/192 (95%)	180 (99%)	2 (1%)	73	55

All (2) residues with a non-rotameric sidechain are listed below:

Mol	Chain	Res	Type
1	B	696	PHE
2	D	804	LEU

Sometimes sidechains can be flipped to improve hydrogen bonding and reduce clashes. There are no such sidechains identified.

### 5.3.3 RNA [i](#)

There are no RNA molecules in this entry.

## 5.4 Non-standard residues in protein, DNA, RNA chains [i](#)

There are no non-standard protein/DNA/RNA residues in this entry.

## 5.5 Carbohydrates [i](#)

There are no monosaccharides in this entry.

## 5.6 Ligand geometry [i](#)

2 ligands are modelled in this entry.

There are no bond length outliers.

There are no bond angle outliers.

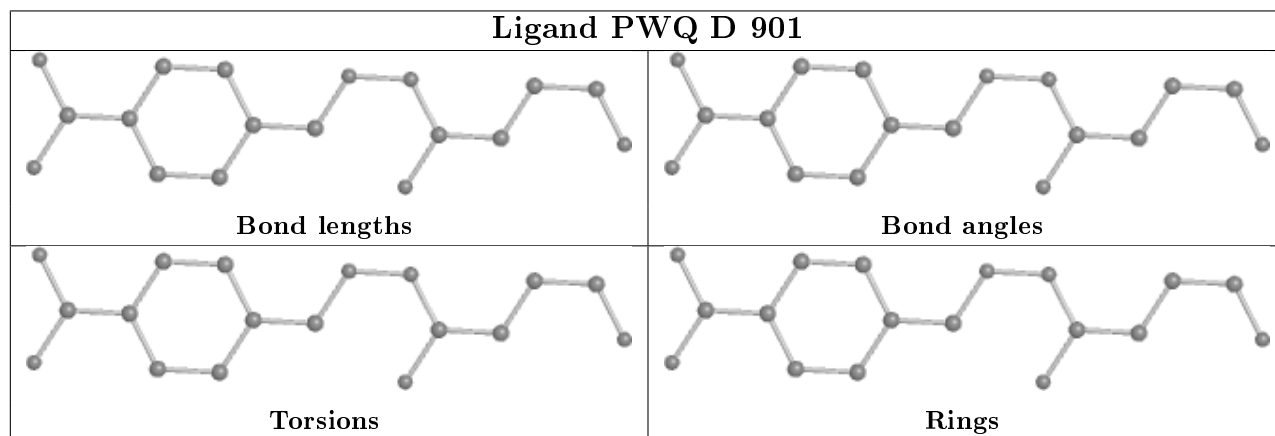
There are no chirality outliers.

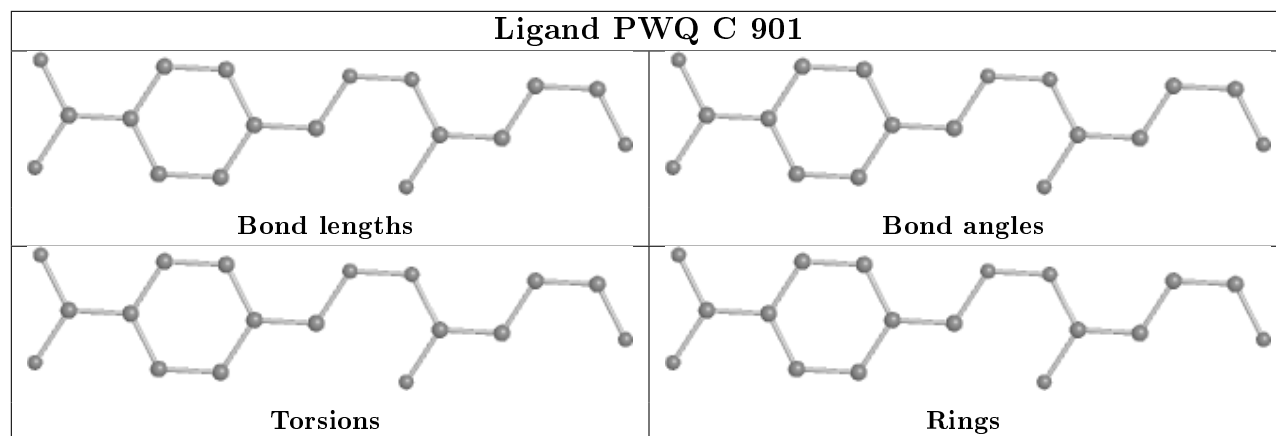
There are no torsion outliers.

There are no ring outliers.

No monomer is involved in short contacts.

The following is a two-dimensional graphical depiction of Mogul quality analysis of bond lengths, bond angles, torsion angles, and ring geometry for all instances of the Ligand of Interest. In addition, ligands with molecular weight > 250 and outliers as shown on the validation Tables will also be included. For torsion angles, if less than 5% of the Mogul distribution of torsion angles is within 10 degrees of the torsion angle in question, then that torsion angle is considered an outlier. Any bond that is central to one or more torsion angles identified as an outlier by Mogul will be highlighted in the graph. For rings, the root-mean-square deviation (RMSD) between the ring in question and similar rings identified by Mogul is calculated over all ring torsion angles. If the average RMSD is greater than 60 degrees and the minimal RMSD between the ring in question and any Mogul-identified rings is also greater than 60 degrees, then that ring is considered an outlier. The outliers are highlighted in purple. The color gray indicates Mogul did not find sufficient equivalents in the CSD to analyse the geometry.





## 5.7 Other polymers [i](#)

There are no such residues in this entry.

## 5.8 Polymer linkage issues [i](#)

There are no chain breaks in this entry.

## 6 Fit of model and data [i](#)

### 6.1 Protein, DNA and RNA chains [i](#)

In the following table, the column labelled '#RSRZ> 2' contains the number (and percentage) of RSRZ outliers, followed by percent RSRZ outliers for the chain as percentile scores relative to all X-ray entries and entries of similar resolution. The OWAB column contains the minimum, median, 95<sup>th</sup> percentile and maximum values of the occupancy-weighted average B-factor per residue. The column labelled 'Q< 0.9' lists the number of (and percentage) of residues with an average occupancy less than 0.9.

Mol	Chain	Analysed	<RSRZ>	#RSRZ>2	OWAB(Å <sup>2</sup> )	Q<0.9
1	A	101/112 (90%)	0.13	4 (3%) 38 39	27, 39, 66, 101	0
1	B	112/112 (100%)	0.03	4 (3%) 42 44	28, 39, 62, 93	0
2	C	3/3 (100%)	0.10	0 100 100	43, 43, 44, 47	0
2	D	3/3 (100%)	0.19	0 100 100	47, 47, 49, 51	0
All	All	219/230 (95%)	0.08	8 (3%) 41 42	27, 39, 64, 101	0

All (8) RSRZ outliers are listed below:

Mol	Chain	Res	Type	RSRZ
1	B	762	MET	3.7
1	B	759	HIS	3.0
1	B	760	PRO	2.8
1	A	657	TYR	2.5
1	A	652	PRO	2.4
1	A	696	PHE	2.4
1	A	689	GLU	2.1
1	B	758	ARG	2.1

### 6.2 Non-standard residues in protein, DNA, RNA chains [i](#)

There are no non-standard protein/DNA/RNA residues in this entry.

### 6.3 Carbohydrates [i](#)

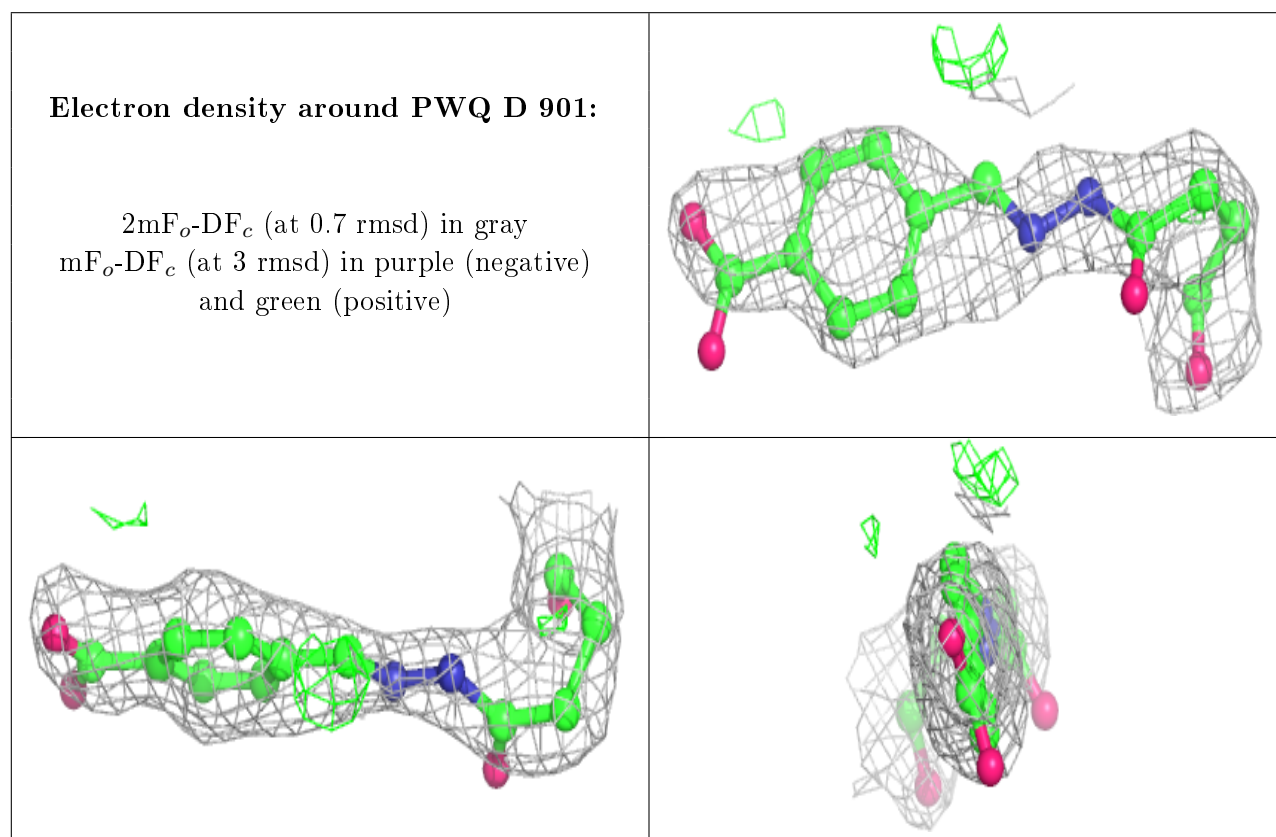
There are no monosaccharides in this entry.

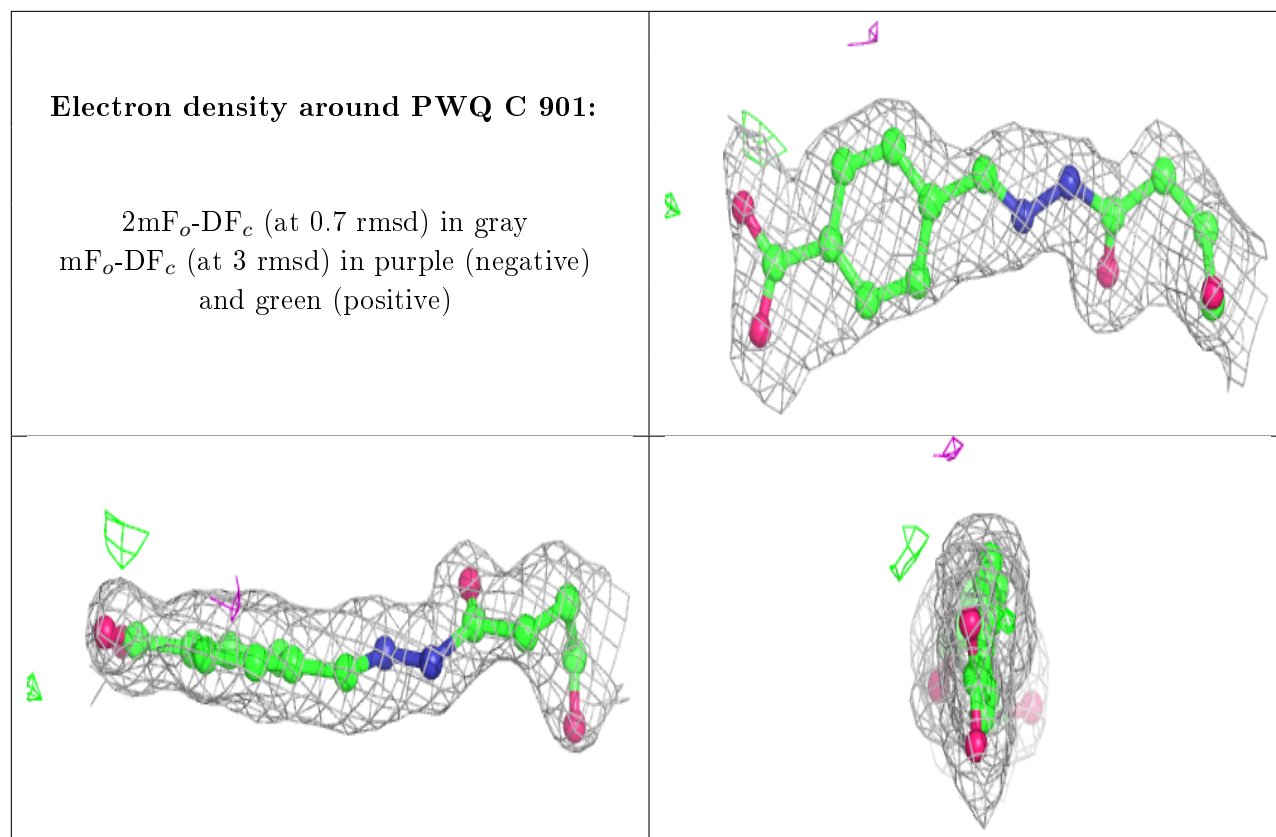
## 6.4 Ligands [i](#)

In the following table, the Atoms column lists the number of modelled atoms in the group and the number defined in the chemical component dictionary. The B-factors column lists the minimum, median, 95<sup>th</sup> percentile and maximum values of B factors of atoms in the group. The column labelled 'Q<0.9' lists the number of atoms with occupancy less than 0.9.

Mol	Type	Chain	Res	Atoms	RSCC	RSR	B-factors(Å <sup>2</sup> )	Q<0.9
3	PWQ	D	901	18/18	0.79	0.17	64,75,91,102	12
3	PWQ	C	901	18/18	0.80	0.14	41,54,63,63	18

The following is a graphical depiction of the model fit to experimental electron density of all instances of the Ligand of Interest. In addition, ligands with molecular weight > 250 and outliers as shown on the geometry validation Tables will also be included. Each fit is shown from different orientation to approximate a three-dimensional view.





## 6.5 Other polymers [i](#)

There are no such residues in this entry.