



Full wwPDB X-ray Structure Validation Report ⓘ

Nov 23, 2023 – 12:38 AM JST

PDB ID : 7YJG
Title : Crystal structure of the P450 BM3 heme domain mutant F87A/T268V/A82C/L181M in complex with N-imidazolyl-pentanoyl-L-phenylalanine and hydroxylamine
Authors : Dong, S.; Chen, J.; Jiang, Y.; Cong, Z.; Feng, Y.
Deposited on : 2022-07-20
Resolution : 1.68 Å(reported)

This is a Full wwPDB X-ray Structure Validation Report for a publicly released PDB entry.

We welcome your comments at validation@mail.wwpdb.org

A user guide is available at

<https://www.wwpdb.org/validation/2017/XrayValidationReportHelp>

with specific help available everywhere you see the ⓘ symbol.

The types of validation reports are described at

<http://www.wwpdb.org/validation/2017/FAQs#types>.

The following versions of software and data (see [references ⓘ](#)) were used in the production of this report:

MolProbity : 4.02b-467
Mogul : 1.8.5 (274361), CSD as541be (2020)
Xtriage (Phenix) : 1.13
EDS : 2.36
buster-report : 1.1.7 (2018)
Percentile statistics : 20191225.v01 (using entries in the PDB archive December 25th 2019)
Refmac : 5.8.0158
CCP4 : 7.0.044 (Gargrove)
Ideal geometry (proteins) : Engh & Huber (2001)
Ideal geometry (DNA, RNA) : Parkinson et al. (1996)
Validation Pipeline (wwPDB-VP) : 2.36

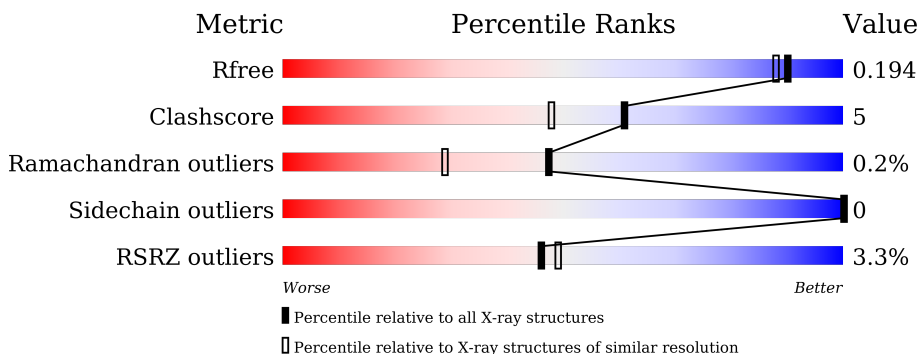
1 Overall quality at a glance

The following experimental techniques were used to determine the structure:

X-RAY DIFFRACTION

The reported resolution of this entry is 1.68 Å.

Percentile scores (ranging between 0-100) for global validation metrics of the entry are shown in the following graphic. The table shows the number of entries on which the scores are based.



Metric	Whole archive (#Entries)	Similar resolution (#Entries, resolution range(Å))
R_{free}	130704	6780 (1.70-1.66)
Clashscore	141614	7310 (1.70-1.66)
Ramachandran outliers	138981	7173 (1.70-1.66)
Sidechain outliers	138945	7172 (1.70-1.66)
RSRZ outliers	127900	6661 (1.70-1.66)

The table below summarises the geometric issues observed across the polymeric chains and their fit to the electron density. The red, orange, yellow and green segments of the lower bar indicate the fraction of residues that contain outliers for ≥ 3 , 2, 1 and 0 types of geometric quality criteria respectively. A grey segment represents the fraction of residues that are not modelled. The numeric value for each fraction is indicated below the corresponding segment, with a dot representing fractions $\leq 5\%$. The upper red bar (where present) indicates the fraction of residues that have poor fit to the electron density. The numeric value is given above the bar.

Mol	Chain	Length	Quality of chain
1	A	466	 3% 87% 10%
1	B	466	 3% 89% 8%

2 Entry composition [i](#)

There are 5 unique types of molecules in this entry. The entry contains 8583 atoms, of which 146 are hydrogens and 0 are deuteriums.

In the tables below, the ZeroOcc column contains the number of atoms modelled with zero occupancy, the AltConf column contains the number of residues with at least one atom in alternate conformation and the Trace column contains the number of residues modelled with at most 2 atoms.

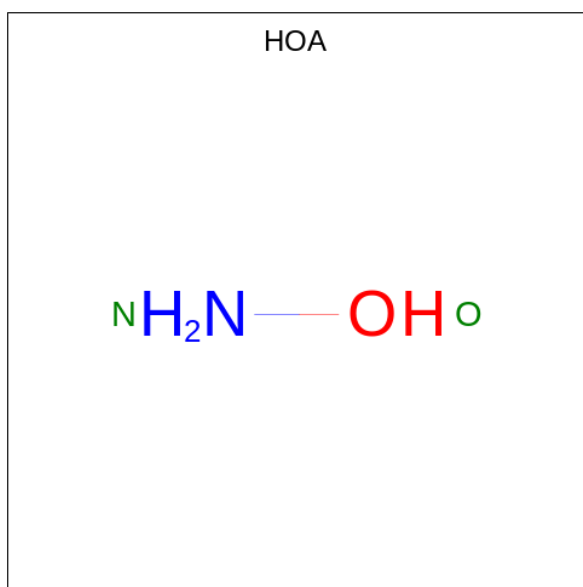
- Molecule 1 is a protein called Bifunctional cytochrome P450/NADPH-P450 reductase.

Mol	Chain	Residues	Atoms					ZeroOcc	AltConf	Trace
			Total	C	N	O	S			
1	A	455	3663	2340	623	681	19	0	0	0
1	B	454	3648	2331	621	677	19	0	0	0

There are 28 discrepancies between the modelled and reference sequences:

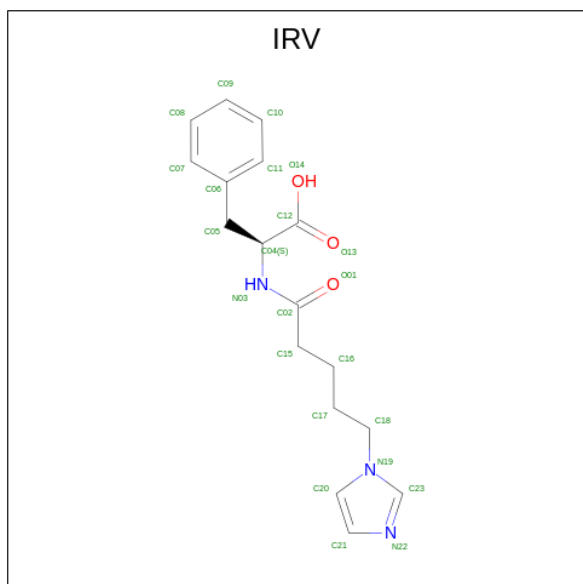
Chain	Residue	Modelled	Actual	Comment	Reference
A	-2	MET	-	initiating methionine	UNP P14779
A	-1	GLY	-	expression tag	UNP P14779
A	82	CYS	ALA	engineered mutation	UNP P14779
A	87	ALA	PHE	engineered mutation	UNP P14779
A	181	MET	LEU	engineered mutation	UNP P14779
A	268	VAL	THR	engineered mutation	UNP P14779
A	456	LEU	-	expression tag	UNP P14779
A	457	GLU	-	expression tag	UNP P14779
A	458	HIS	-	expression tag	UNP P14779
A	459	HIS	-	expression tag	UNP P14779
A	460	HIS	-	expression tag	UNP P14779
A	461	HIS	-	expression tag	UNP P14779
A	462	HIS	-	expression tag	UNP P14779
A	463	HIS	-	expression tag	UNP P14779
B	-2	MET	-	initiating methionine	UNP P14779
B	-1	GLY	-	expression tag	UNP P14779
B	82	CYS	ALA	engineered mutation	UNP P14779
B	87	ALA	PHE	engineered mutation	UNP P14779
B	181	MET	LEU	engineered mutation	UNP P14779
B	268	VAL	THR	engineered mutation	UNP P14779
B	456	LEU	-	expression tag	UNP P14779
B	457	GLU	-	expression tag	UNP P14779
B	458	HIS	-	expression tag	UNP P14779
B	459	HIS	-	expression tag	UNP P14779
B	460	HIS	-	expression tag	UNP P14779

Continued on next page...



Mol	Chain	Residues	Atoms				ZeroOcc	AltConf
			Total	H	N	O		
3	A	1	5	3	1	1	0	0
3	B	1	5	3	1	1	0	0

- Molecule 4 is (2 {S})-2-(5-imidazol-1-ylpentanoylamino)-3-phenyl-propanoic acid (three-letter code: IRV) (formula: $\text{C}_{17}\text{H}_{21}\text{N}_3\text{O}_3$) (labeled as "Ligand of Interest" by depositor).



Mol	Chain	Residues	Atoms				ZeroOcc	AltConf	
			Total	C	H	N			O
4	A	1	86	34	40	6	6	0	1

Continued on next page...

Continued from previous page...

Mol	Chain	Residues	Atoms					ZeroOcc	AltConf
			Total	C	H	N	O		
4	B	1	86	34	40	6	6	0	1

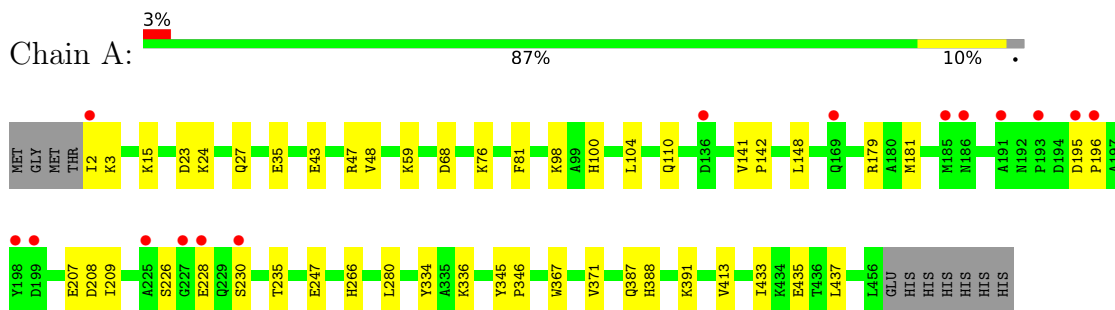
- Molecule 5 is water.

Mol	Chain	Residues	Atoms		ZeroOcc	AltConf
5	A	488	Total	O	0	0
			488	488		
5	B	456	Total	O	0	0
			456	456		

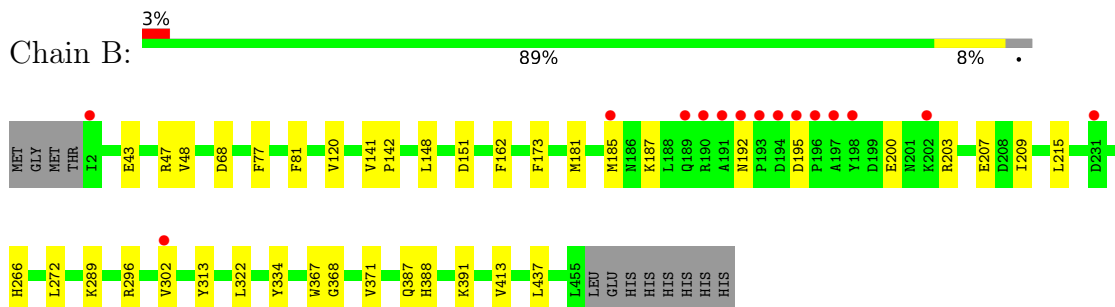
3 Residue-property plots [i](#)

These plots are drawn for all protein, RNA, DNA and oligosaccharide chains in the entry. The first graphic for a chain summarises the proportions of the various outlier classes displayed in the second graphic. The second graphic shows the sequence view annotated by issues in geometry and electron density. Residues are color-coded according to the number of geometric quality criteria for which they contain at least one outlier: green = 0, yellow = 1, orange = 2 and red = 3 or more. A red dot above a residue indicates a poor fit to the electron density ($RSRZ > 2$). Stretches of 2 or more consecutive residues without any outlier are shown as a green connector. Residues present in the sample, but not in the model, are shown in grey.

- Molecule 1: Bifunctional cytochrome P450/NADPH-P450 reductase



- Molecule 1: Bifunctional cytochrome P450/NADPH-P450 reductase



4 Data and refinement statistics

Property	Value	Source
Space group	P 1 21 1	Depositor
Cell constants a, b, c, α , β , γ	58.56Å 147.74Å 64.47Å 90.00° 100.39° 90.00°	Depositor
Resolution (Å)	28.27 – 1.68 73.87 – 1.68	Depositor EDS
% Data completeness (in resolution range)	95.2 (28.27-1.68) 95.3 (73.87-1.68)	Depositor EDS
R_{merge}	0.06	Depositor
R_{sym}	(Not available)	Depositor
$\langle I/\sigma(I) \rangle$ ¹	2.12 (at 1.68Å)	Xtrriage
Refinement program	PHENIX 1.13_2998	Depositor
R, R_{free}	0.164 , 0.192 0.167 , 0.194	Depositor DCC
R_{free} test set	5700 reflections (4.93%)	wwPDB-VP
Wilson B-factor (Å ²)	20.6	Xtrriage
Anisotropy	0.122	Xtrriage
Bulk solvent k_{sol} (e/Å ³), B_{sol} (Å ²)	0.37 , 54.5	EDS
L-test for twinning ²	$\langle L \rangle = 0.49$, $\langle L^2 \rangle = 0.32$	Xtrriage
Estimated twinning fraction	No twinning to report.	Xtrriage
F_o, F_c correlation	0.96	EDS
Total number of atoms	8583	wwPDB-VP
Average B, all atoms (Å ²)	27.0	wwPDB-VP

Xtrriage's analysis on translational NCS is as follows: *The largest off-origin peak in the Patterson function is 4.60% of the height of the origin peak. No significant pseudotranslation is detected.*

¹Intensities estimated from amplitudes.

²Theoretical values of $\langle |L| \rangle$, $\langle L^2 \rangle$ for acentric reflections are 0.5, 0.333 respectively for untwinned datasets, and 0.375, 0.2 for perfectly twinned datasets.

5 Model quality

5.1 Standard geometry

Bond lengths and bond angles in the following residue types are not validated in this section: IRV, HEM, HOA

The Z score for a bond length (or angle) is the number of standard deviations the observed value is removed from the expected value. A bond length (or angle) with $|Z| > 5$ is considered an outlier worth inspection. RMSZ is the root-mean-square of all Z scores of the bond lengths (or angles).

Mol	Chain	Bond lengths		Bond angles	
		RMSZ	# Z >5	RMSZ	# Z >5
1	A	0.48	0/3747	0.65	0/5065
1	B	0.46	0/3732	0.69	0/5045
All	All	0.47	0/7479	0.67	0/10110

There are no bond length outliers.

There are no bond angle outliers.

There are no chirality outliers.

There are no planarity outliers.

5.2 Too-close contacts

In the following table, the Non-H and H(model) columns list the number of non-hydrogen atoms and hydrogen atoms in the chain respectively. The H(added) column lists the number of hydrogen atoms added and optimized by MolProbity. The Clashes column lists the number of clashes within the asymmetric unit, whereas Symm-Clashes lists symmetry-related clashes.

Mol	Chain	Non-H	H(model)	H(added)	Clashes	Symm-Clashes
1	A	3663	0	3640	34	0
1	B	3648	0	3621	34	0
2	A	43	30	30	2	0
2	B	43	30	30	1	0
3	A	2	3	0	0	0
3	B	2	3	0	0	0
4	A	46	40	0	2	0
4	B	46	40	0	2	0
5	A	488	0	0	7	2
5	B	456	0	0	0	3
All	All	8437	146	7321	67	3

The all-atom clashscore is defined as the number of clashes found per 1000 atoms (including hydrogen atoms). The all-atom clashscore for this structure is 5.

All (67) close contacts within the same asymmetric unit are listed below, sorted by their clash magnitude.

Atom-1	Atom-2	Interatomic distance (Å)	Clash overlap (Å)
1:B:289:LYS:HD2	1:B:313:TYR:CE1	2.18	0.78
1:B:289:LYS:HD2	1:B:313:TYR:CZ	2.25	0.72
1:B:120:VAL:HG11	1:B:302:VAL:CG2	2.20	0.71
1:B:388:HIS:HA	1:B:391:LYS:HD3	1.72	0.70
1:B:47:ARG:NH2	4:B:503[A]:IRV:O13	2.26	0.68
1:A:181:MET:CE	1:A:437:LEU:HD12	2.23	0.67
1:A:181:MET:HE3	1:A:437:LEU:HD12	1.78	0.64
1:A:47:ARG:NH1	4:A:503[B]:IRV:O13	2.31	0.61
1:A:3:LYS:HD2	1:A:345:TYR:OH	2.01	0.61
1:A:35:GLU:HG3	5:A:951:HOH:O	1.99	0.60
1:A:336:LYS:HE2	5:A:982:HOH:O	2.02	0.60
1:B:43:GLU:HG2	1:B:48:VAL:HG22	1.83	0.60
1:A:179:ARG:HD2	1:A:208:ASP:OD2	2.03	0.58
1:A:15:LYS:HE2	5:A:770:HOH:O	2.05	0.57
1:A:141:VAL:HB	1:A:142:PRO:HD3	1.85	0.57
1:A:2:ILE:HD12	1:A:346:PRO:HD3	1.87	0.57
1:A:387:GLN:HG2	1:B:289:LYS:HD3	1.87	0.56
1:A:59:LYS:HG3	1:B:296:ARG:HH12	1.71	0.56
1:B:368:GLY:O	1:B:371:VAL:HG13	2.06	0.55
1:A:226:SER:OG	1:A:228:GLU:HG2	2.05	0.55
1:B:200:GLU:OE2	1:B:203:ARG:NH2	2.39	0.55
1:B:192:ASN:O	1:B:195:ASP:HB2	2.07	0.55
1:B:120:VAL:HG11	1:B:302:VAL:HG21	1.88	0.54
1:A:24:LYS:HE2	1:A:433:ILE:O	2.09	0.53
1:B:68:ASP:HB3	1:B:334:TYR:CE1	2.44	0.52
1:A:27:GLN:HG3	1:A:435:GLU:OE2	2.09	0.52
1:A:195:ASP:OD1	1:A:196:PRO:HD2	2.10	0.52
1:B:141:VAL:HB	1:B:142:PRO:HD3	1.91	0.52
1:A:110:GLN:NE2	5:A:603:HOH:O	2.32	0.51
1:A:76:LYS:NZ	5:A:610:HOH:O	2.43	0.51
1:B:120:VAL:HG11	1:B:302:VAL:HG23	1.93	0.51
1:B:47:ARG:NH1	4:B:503[A]:IRV:O13	2.44	0.50
1:B:367:TRP:HB2	1:B:371:VAL:HG12	1.93	0.50
1:B:181:MET:CE	1:B:437:LEU:HD12	2.41	0.50
1:A:47:ARG:NH2	4:A:503[B]:IRV:O13	2.44	0.50
1:B:185:MET:HG2	1:B:437:LEU:CD2	2.41	0.49
1:B:77:PHE:CE2	1:B:187:LYS:HB3	2.48	0.49

Continued on next page...

Continued from previous page...

Atom-1	Atom-2	Interatomic distance (Å)	Clash overlap (Å)
1:A:367:TRP:HB2	1:A:371:VAL:HG12	1.96	0.47
1:A:59:LYS:HG3	1:B:296:ARG:NH1	2.30	0.47
1:B:120:VAL:CG1	1:B:302:VAL:HG23	2.45	0.46
1:B:272:LEU:HD13	1:B:322:LEU:HG	1.98	0.46
1:B:181:MET:HE3	1:B:437:LEU:HD12	1.97	0.46
1:A:23:ASP:OD2	5:A:601:HOH:O	2.21	0.45
1:B:203:ARG:NH1	1:B:207:GLU:OE1	2.48	0.45
1:A:59:LYS:CG	1:B:296:ARG:HH12	2.28	0.45
1:A:388:HIS:HA	1:A:391:LYS:HD3	1.97	0.45
1:B:68:ASP:HB3	1:B:334:TYR:CZ	2.52	0.45
1:A:207:GLU:HG3	5:A:817:HOH:O	2.17	0.45
1:B:81:PHE:HB3	1:B:209:ILE:HG12	1.99	0.44
2:B:501:HEM:HMC1	2:B:501:HEM:HBC2	1.99	0.44
2:A:501:HEM:HBC2	2:A:501:HEM:CMC	2.48	0.44
1:B:185:MET:HG2	1:B:437:LEU:HG	1.99	0.44
1:A:81:PHE:HB3	1:A:209:ILE:HG12	1.98	0.44
1:A:181:MET:HE1	1:A:437:LEU:HD12	1.98	0.44
1:A:230:SER:O	1:A:235:THR:OG1	2.24	0.44
1:B:151:ASP:OD1	1:B:162:PHE:HB2	2.18	0.44
2:A:501:HEM:HBC2	2:A:501:HEM:HMC1	1.99	0.43
1:A:100:HIS:NE2	1:A:104:LEU:HD11	2.34	0.43
1:A:43:GLU:HG2	1:A:48:VAL:HG22	2.01	0.42
1:B:173:PHE:HB2	1:B:215:LEU:HD22	2.01	0.42
1:B:148:LEU:HD21	1:B:413:VAL:HG21	2.02	0.41
1:B:289:LYS:CD	1:B:313:TYR:CE1	2.97	0.41
1:B:387:GLN:HG2	1:B:388:HIS:CD2	2.56	0.41
1:A:68:ASP:HB3	1:A:334:TYR:CE1	2.56	0.41
1:A:148:LEU:HD21	1:A:413:VAL:HG11	2.01	0.41
1:A:98:LYS:HE3	1:A:247:GLU:HB2	2.02	0.41
1:A:280:LEU:HD23	1:A:280:LEU:HA	1.95	0.40

All (3) symmetry-related close contacts are listed below. The label for Atom-2 includes the symmetry operator and encoded unit-cell translations to be applied.

Atom-1	Atom-2	Interatomic distance (Å)	Clash overlap (Å)
5:A:951:HOH:O	5:B:949:HOH:O[1_656]	2.03	0.17
5:B:962:HOH:O	5:B:1021:HOH:O[1_455]	2.12	0.08
5:A:601:HOH:O	5:B:606:HOH:O[1_656]	2.16	0.04

5.3 Torsion angles [i](#)

5.3.1 Protein backbone [i](#)

In the following table, the Percentiles column shows the percent Ramachandran outliers of the chain as a percentile score with respect to all X-ray entries followed by that with respect to entries of similar resolution.

The Analysed column shows the number of residues for which the backbone conformation was analysed, and the total number of residues.

Mol	Chain	Analysed	Favoured	Allowed	Outliers	Percentiles	
1	A	453/466 (97%)	438 (97%)	14 (3%)	1 (0%)	47	29
1	B	452/466 (97%)	438 (97%)	13 (3%)	1 (0%)	47	29
All	All	905/932 (97%)	876 (97%)	27 (3%)	2 (0%)	47	29

All (2) Ramachandran outliers are listed below:

Mol	Chain	Res	Type
1	B	266	HIS
1	A	266	HIS

5.3.2 Protein sidechains [i](#)

In the following table, the Percentiles column shows the percent sidechain outliers of the chain as a percentile score with respect to all X-ray entries followed by that with respect to entries of similar resolution.

The Analysed column shows the number of residues for which the sidechain conformation was analysed, and the total number of residues.

Mol	Chain	Analysed	Rotameric	Outliers	Percentiles	
1	A	398/409 (97%)	398 (100%)	0	100	100
1	B	395/409 (97%)	395 (100%)	0	100	100
All	All	793/818 (97%)	793 (100%)	0	100	100

There are no protein residues with a non-rotameric sidechain to report.

Sometimes sidechains can be flipped to improve hydrogen bonding and reduce clashes. There are no such sidechains identified.

5.3.3 RNA [i](#)

There are no RNA molecules in this entry.

5.4 Non-standard residues in protein, DNA, RNA chains [i](#)

There are no non-standard protein/DNA/RNA residues in this entry.

5.5 Carbohydrates [i](#)

There are no monosaccharides in this entry.

5.6 Ligand geometry [i](#)

8 ligands are modelled in this entry.

In the following table, the Counts columns list the number of bonds (or angles) for which Mogul statistics could be retrieved, the number of bonds (or angles) that are observed in the model and the number of bonds (or angles) that are defined in the Chemical Component Dictionary. The Link column lists molecule types, if any, to which the group is linked. The Z score for a bond length (or angle) is the number of standard deviations the observed value is removed from the expected value. A bond length (or angle) with $|Z| > 2$ is considered an outlier worth inspection. RMSZ is the root-mean-square of all Z scores of the bond lengths (or angles).

Mol	Type	Chain	Res	Link	Bond lengths			Bond angles		
					Counts	RMSZ	# Z > 2	Counts	RMSZ	# Z > 2
4	IRV	B	503[A]	-	23,24,24	1.50	3 (13%)	28,30,30	0.92	2 (7%)
4	IRV	A	503[A]	-	23,24,24	1.56	3 (13%)	28,30,30	1.12	2 (7%)
2	HEM	B	501	1,3	41,50,50	1.58	10 (24%)	45,82,82	2.10	14 (31%)
3	HOA	A	502	2	0,1,1	-	-	-	-	-
3	HOA	B	502	2	0,1,1	-	-	-	-	-
4	IRV	A	503[B]	-	23,24,24	1.58	3 (13%)	28,30,30	0.89	2 (7%)
4	IRV	B	503[B]	-	23,24,24	1.62	3 (13%)	28,30,30	1.58	4 (14%)
2	HEM	A	501	1,3	41,50,50	1.62	9 (21%)	45,82,82	1.00	3 (6%)

In the following table, the Chirals column lists the number of chiral outliers, the number of chiral centers analysed, the number of these observed in the model and the number defined in the Chemical Component Dictionary. Similar counts are reported in the Torsion and Rings columns. '-' means no outliers of that kind were identified.

Mol	Type	Chain	Res	Link	Chirals	Torsions	Rings
2	HEM	A	501	1,3	-	2/12/54/54	-

Continued on next page...

Continued from previous page...

Mol	Type	Chain	Res	Link	Chirals	Torsions	Rings
4	IRV	B	503[A]	-	-	6/19/19/19	0/2/2/2
4	IRV	A	503[A]	-	-	1/19/19/19	0/2/2/2
2	HEM	B	501	1,3	-	2/12/54/54	-
4	IRV	B	503[B]	-	-	3/19/19/19	0/2/2/2
4	IRV	A	503[B]	-	-	6/19/19/19	0/2/2/2

All (31) bond length outliers are listed below:

Mol	Chain	Res	Type	Atoms	Z	Observed(Å)	Ideal(Å)
4	B	503[B]	IRV	C02-N03	6.15	1.47	1.34
4	A	503[A]	IRV	C02-N03	5.86	1.46	1.34
4	A	503[B]	IRV	C02-N03	5.66	1.46	1.34
4	B	503[A]	IRV	C02-N03	5.38	1.45	1.34
2	A	501	HEM	C3C-C2C	-5.33	1.33	1.40
2	B	501	HEM	C1B-NB	-4.45	1.32	1.40
2	B	501	HEM	C4D-ND	-3.82	1.33	1.40
2	A	501	HEM	C3C-CAC	3.32	1.54	1.47
2	B	501	HEM	C4B-NB	-2.81	1.33	1.38
2	B	501	HEM	FE-NB	2.76	2.10	1.96
4	A	503[B]	IRV	C20-N19	-2.70	1.32	1.37
4	B	503[A]	IRV	C20-N19	-2.63	1.32	1.37
2	A	501	HEM	CAB-C3B	2.61	1.54	1.47
4	B	503[B]	IRV	C20-N19	-2.60	1.32	1.37
2	B	501	HEM	C3B-C4B	2.58	1.50	1.44
4	A	503[A]	IRV	C20-N19	-2.52	1.33	1.37
2	B	501	HEM	C1D-ND	-2.48	1.33	1.38
2	A	501	HEM	CAA-C2A	2.42	1.55	1.52
2	A	501	HEM	CMD-C2D	2.36	1.55	1.50
2	B	501	HEM	O2D-CGD	-2.33	1.22	1.30
4	B	503[B]	IRV	O01-C02	-2.29	1.18	1.23
2	A	501	HEM	CMB-C2B	2.28	1.55	1.50
4	A	503[B]	IRV	O01-C02	-2.27	1.18	1.23
2	B	501	HEM	O2A-CGA	-2.26	1.23	1.30
4	A	503[A]	IRV	O01-C02	-2.26	1.18	1.23
4	B	503[A]	IRV	O01-C02	-2.21	1.18	1.23
2	A	501	HEM	CMA-C3A	2.10	1.56	1.51
2	A	501	HEM	C1A-NA	2.08	1.40	1.36
2	A	501	HEM	C4A-NA	2.07	1.40	1.36
2	B	501	HEM	CHB-C1B	2.06	1.40	1.35
2	B	501	HEM	C4D-C3D	2.03	1.48	1.45

All (27) bond angle outliers are listed below:

Mol	Chain	Res	Type	Atoms	Z	Observed(°)	Ideal(°)
2	B	501	HEM	C1B-NB-C4B	5.43	110.68	105.07
4	B	503[B]	IRV	C15-C02-N03	4.64	123.89	115.83
2	B	501	HEM	CHC-C4B-NB	3.79	128.55	124.43
2	B	501	HEM	C4B-C3B-C2B	-3.77	104.12	107.11
2	B	501	HEM	CMD-C2D-C1D	3.54	130.44	125.04
2	B	501	HEM	C4B-CHC-C1C	3.51	127.20	122.56
4	A	503[A]	IRV	C15-C02-N03	3.43	121.78	115.83
2	B	501	HEM	CHD-C1D-ND	3.23	127.94	124.43
2	B	501	HEM	CBA-CAA-C2A	-3.09	107.34	112.62
4	B	503[B]	IRV	C05-C04-N03	2.90	116.91	110.79
2	B	501	HEM	CHD-C1D-C2D	-2.89	120.46	124.98
2	B	501	HEM	CHA-C4D-ND	2.79	127.83	124.38
2	B	501	HEM	O2A-CGA-CBA	2.76	122.90	114.03
2	A	501	HEM	CMA-C3A-C4A	-2.76	124.22	128.46
2	B	501	HEM	O2D-CGD-CBD	2.74	122.83	114.03
4	B	503[B]	IRV	O01-C02-N03	-2.69	118.42	122.95
4	B	503[A]	IRV	C12-C04-N03	-2.61	104.36	110.55
2	B	501	HEM	O2D-CGD-O1D	-2.56	116.93	123.30
4	A	503[B]	IRV	C15-C02-N03	2.55	120.26	115.83
2	B	501	HEM	C2C-C3C-C4C	-2.43	105.20	106.90
2	B	501	HEM	CAD-C3D-C4D	2.42	128.89	124.66
4	B	503[B]	IRV	O01-C02-C15	-2.36	117.70	122.02
2	A	501	HEM	CMC-C2C-C3C	2.10	128.61	124.68
4	A	503[B]	IRV	C05-C04-C12	-2.10	105.37	110.42
4	B	503[A]	IRV	O14-C12-O13	-2.09	119.34	124.09
4	A	503[A]	IRV	O01-C02-N03	-2.02	119.55	122.95
2	A	501	HEM	CBA-CAA-C2A	-2.00	109.20	112.62

There are no chirality outliers.

All (20) torsion outliers are listed below:

Mol	Chain	Res	Type	Atoms
4	A	503[A]	IRV	C02-C15-C16-C17
4	B	503[A]	IRV	C02-C15-C16-C17
4	B	503[B]	IRV	C02-C15-C16-C17
4	A	503[B]	IRV	C02-C15-C16-C17
4	B	503[A]	IRV	N03-C02-C15-C16
4	B	503[A]	IRV	O01-C02-C15-C16
4	A	503[B]	IRV	N03-C02-C15-C16
4	A	503[B]	IRV	O01-C02-C15-C16
4	A	503[B]	IRV	C17-C18-N19-C23

Continued on next page...

Continued from previous page...

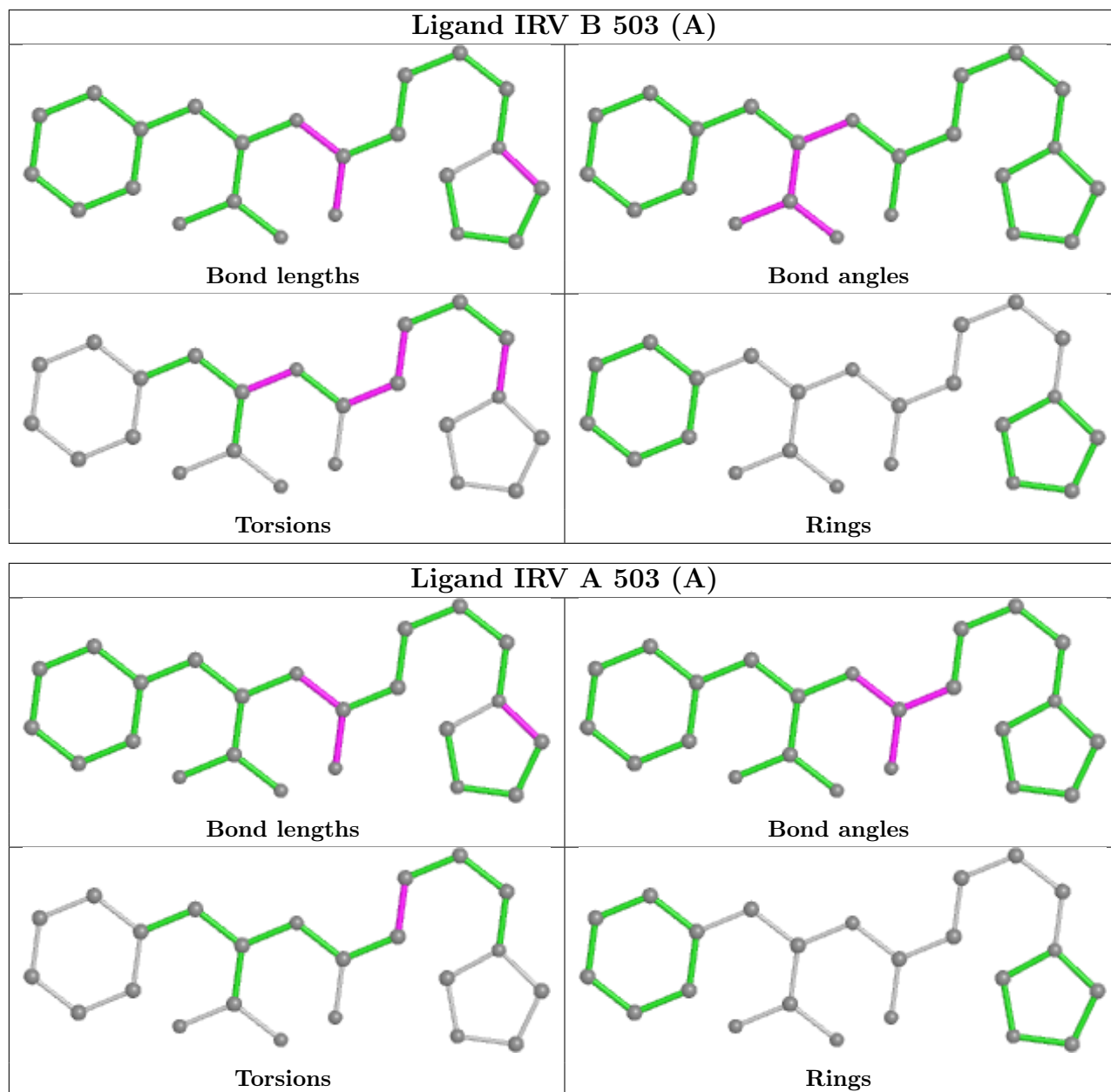
Mol	Chain	Res	Type	Atoms
4	B	503[A]	IRV	C17-C18-N19-C23
4	A	503[B]	IRV	C17-C18-N19-C20
4	B	503[A]	IRV	C17-C18-N19-C20
4	B	503[B]	IRV	C15-C16-C17-C18
4	B	503[B]	IRV	C16-C17-C18-N19
4	A	503[B]	IRV	C12-C04-N03-C02
2	B	501	HEM	CAD-CBD-CGD-O2D
2	A	501	HEM	CAD-CBD-CGD-O2D
4	B	503[A]	IRV	C12-C04-N03-C02
2	B	501	HEM	CAD-CBD-CGD-O1D
2	A	501	HEM	CAD-CBD-CGD-O1D

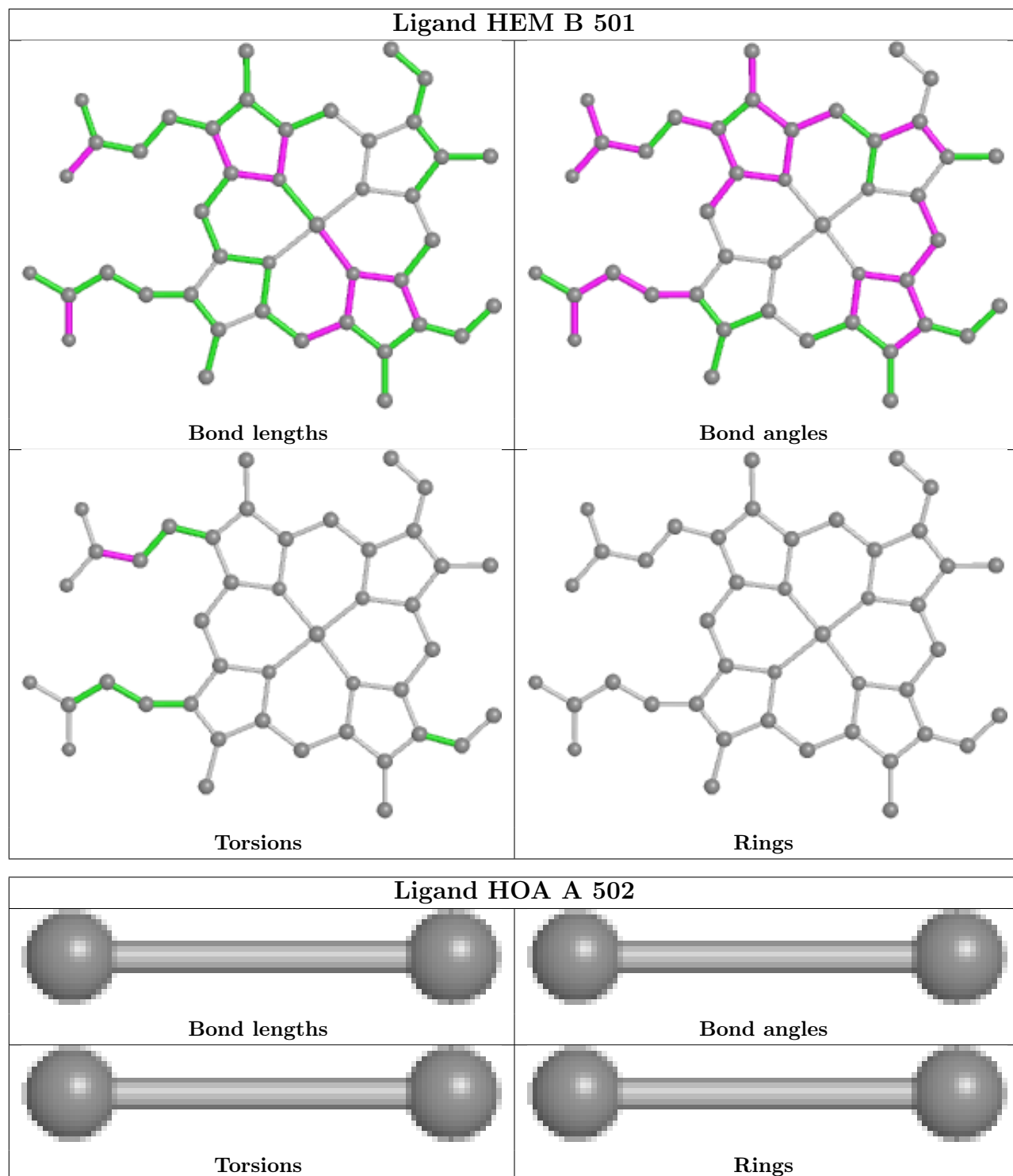
There are no ring outliers.

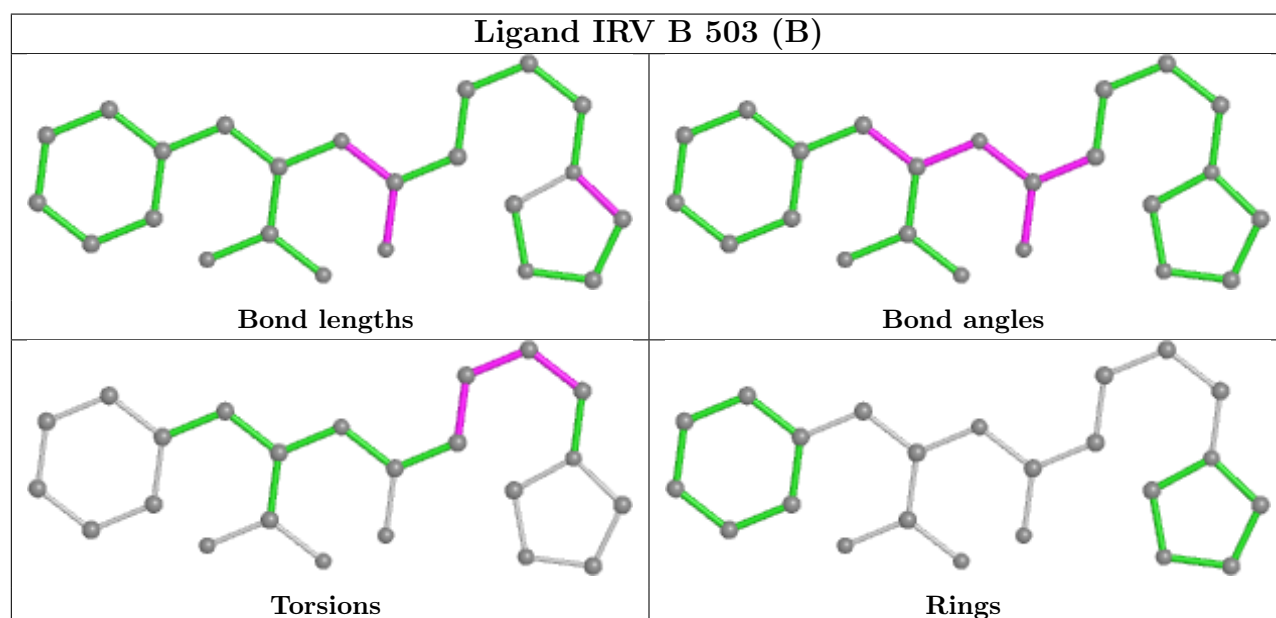
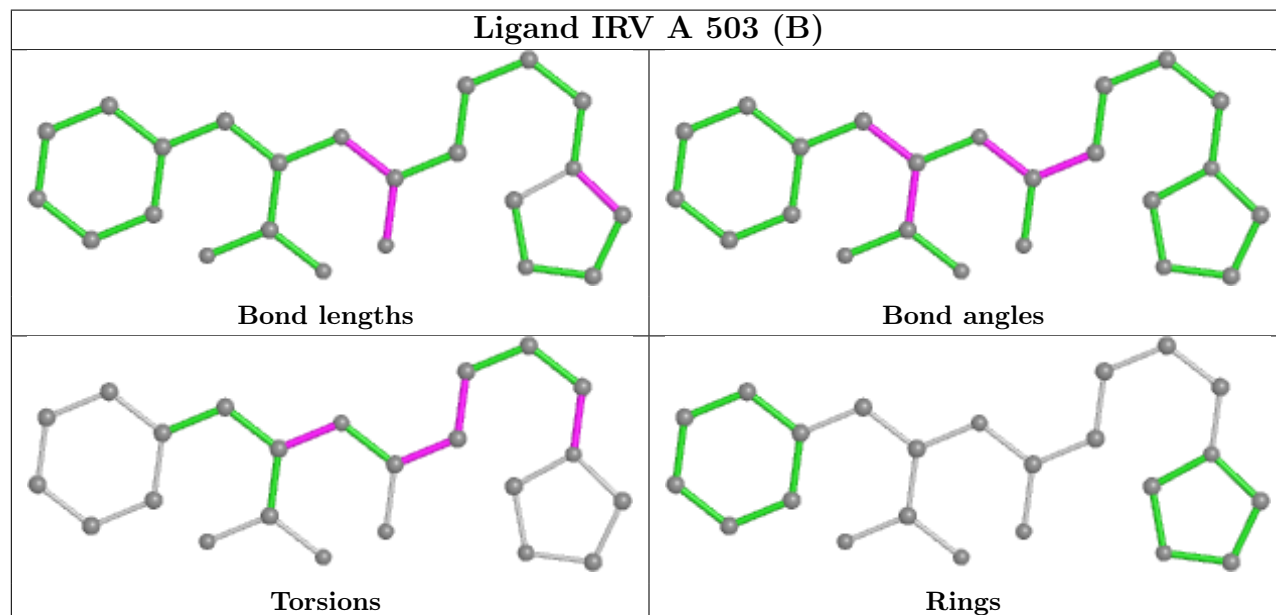
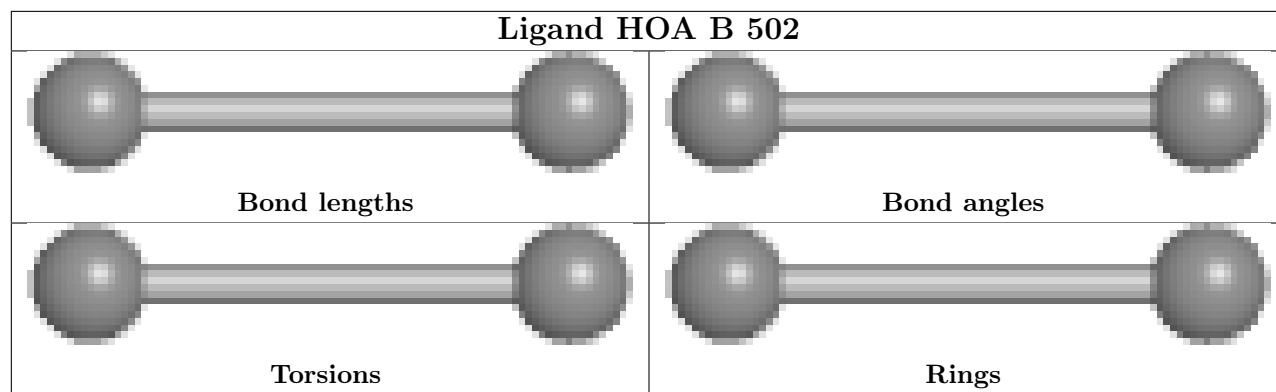
4 monomers are involved in 7 short contacts:

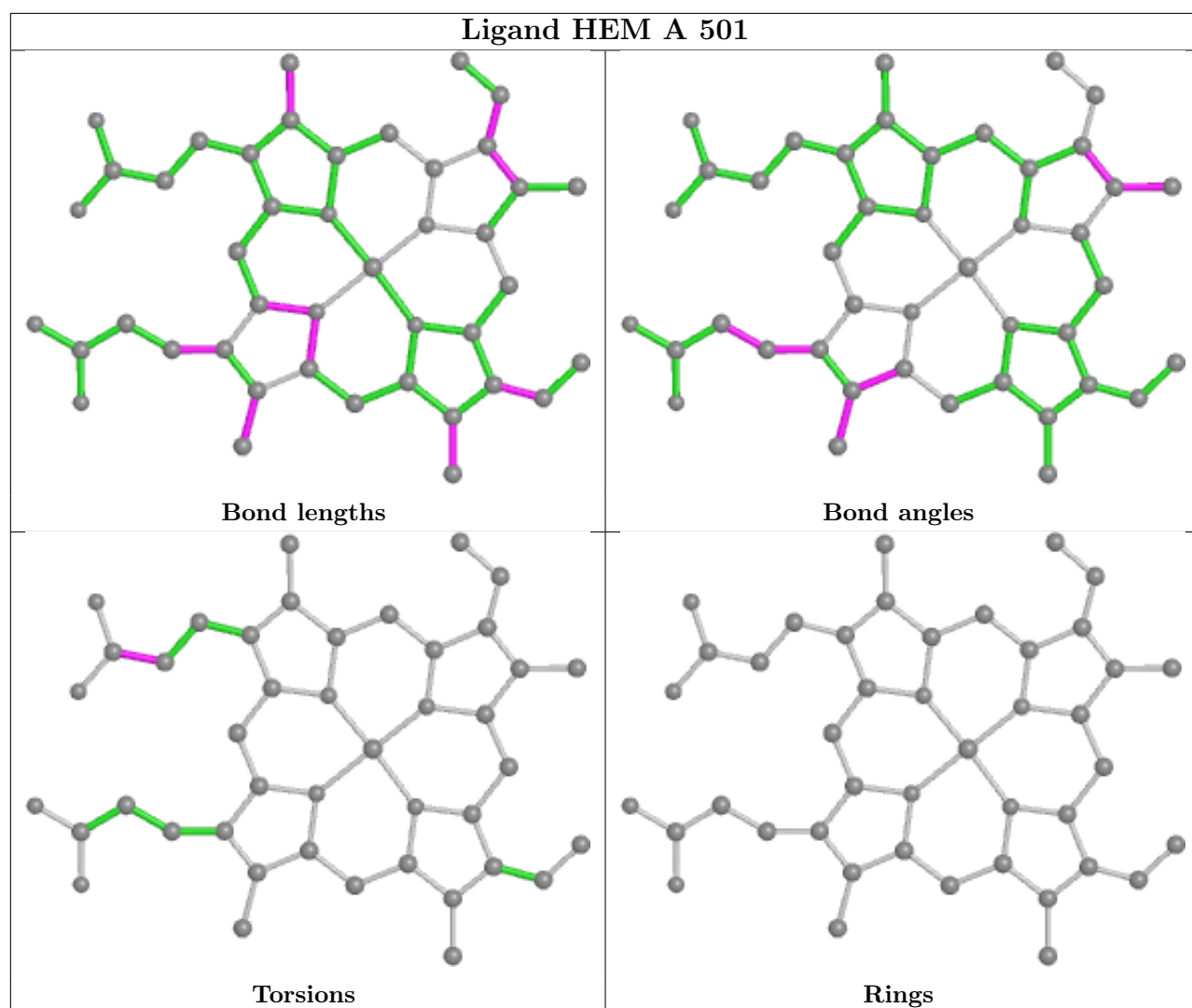
Mol	Chain	Res	Type	Clashes	Symm-Clashes
4	B	503[A]	IRV	2	0
2	B	501	HEM	1	0
4	A	503[B]	IRV	2	0
2	A	501	HEM	2	0

The following is a two-dimensional graphical depiction of Mogul quality analysis of bond lengths, bond angles, torsion angles, and ring geometry for all instances of the Ligand of Interest. In addition, ligands with molecular weight > 250 and outliers as shown on the validation Tables will also be included. For torsion angles, if less than 5% of the Mogul distribution of torsion angles is within 10 degrees of the torsion angle in question, then that torsion angle is considered an outlier. Any bond that is central to one or more torsion angles identified as an outlier by Mogul will be highlighted in the graph. For rings, the root-mean-square deviation (RMSD) between the ring in question and similar rings identified by Mogul is calculated over all ring torsion angles. If the average RMSD is greater than 60 degrees and the minimal RMSD between the ring in question and any Mogul-identified rings is also greater than 60 degrees, then that ring is considered an outlier. The outliers are highlighted in purple. The color gray indicates Mogul did not find sufficient equivalents in the CSD to analyse the geometry.









5.7 Other polymers [i](#)

There are no such residues in this entry.

5.8 Polymer linkage issues [i](#)

There are no chain breaks in this entry.

6 Fit of model and data

6.1 Protein, DNA and RNA chains

In the following table, the column labelled ‘#RSRZ > 2’ contains the number (and percentage) of RSRZ outliers, followed by percent RSRZ outliers for the chain as percentile scores relative to all X-ray entries and entries of similar resolution. The OWAB column contains the minimum, median, 95th percentile and maximum values of the occupancy-weighted average B-factor per residue. The column labelled ‘Q < 0.9’ lists the number of (and percentage) of residues with an average occupancy less than 0.9.

Mol	Chain	Analysed	<RSRZ>	#RSRZ>2	OWAB(Å ²)	Q<0.9
1	A	455/466 (97%)	-0.06	15 (3%) 46 49	12, 22, 52, 66	0
1	B	454/466 (97%)	-0.06	15 (3%) 46 49	13, 23, 51, 79	0
All	All	909/932 (97%)	-0.06	30 (3%) 46 49	12, 22, 52, 79	0

All (30) RSRZ outliers are listed below:

Mol	Chain	Res	Type	RSRZ
1	A	193	PRO	4.5
1	A	196	PRO	4.4
1	B	193	PRO	4.4
1	A	191	ALA	4.4
1	B	196	PRO	4.3
1	B	194	ASP	3.8
1	A	198	TYR	3.6
1	B	198	TYR	3.6
1	A	2	ILE	3.6
1	B	231	ASP	3.5
1	B	191	ALA	3.5
1	A	199	ASP	2.9
1	B	202	LYS	2.8
1	A	225	ALA	2.7
1	A	228	GLU	2.7
1	B	302	VAL	2.7
1	B	195	ASP	2.6
1	A	195	ASP	2.5
1	B	197	ALA	2.4
1	B	189	GLN	2.4
1	A	227	GLY	2.4
1	B	190	ARG	2.3
1	A	185	MET	2.3
1	B	2	ILE	2.3

Continued on next page...

Continued from previous page...

Mol	Chain	Res	Type	RSRZ
1	A	230	SER	2.2
1	A	136	ASP	2.2
1	B	192	ASN	2.2
1	A	186	ASN	2.1
1	B	185	MET	2.0
1	A	169	GLN	2.0

6.2 Non-standard residues in protein, DNA, RNA chains [i](#)

There are no non-standard protein/DNA/RNA residues in this entry.

6.3 Carbohydrates [i](#)

There are no monosaccharides in this entry.

6.4 Ligands [i](#)

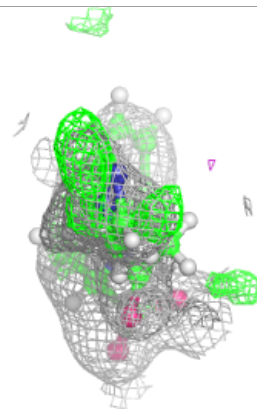
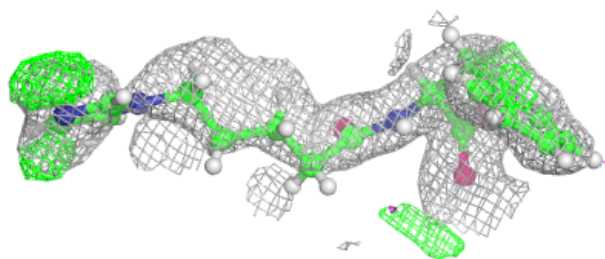
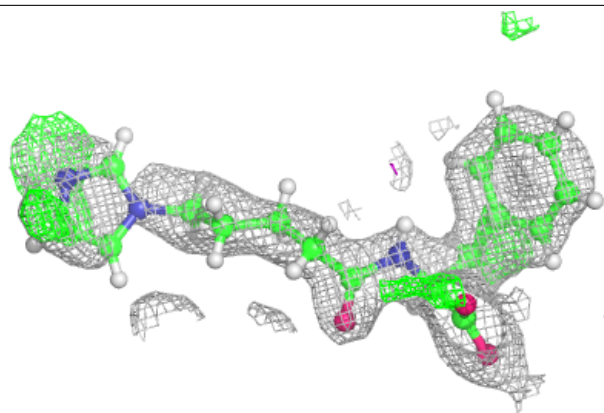
In the following table, the Atoms column lists the number of modelled atoms in the group and the number defined in the chemical component dictionary. The B-factors column lists the minimum, median, 95th percentile and maximum values of B factors of atoms in the group. The column labelled 'Q< 0.9' lists the number of atoms with occupancy less than 0.9.

Mol	Type	Chain	Res	Atoms	RSCC	RSR	B-factors(Å ²)	Q<0.9
4	IRV	A	503[A]	23/23	0.73	0.21	14,38,50,50	43
4	IRV	A	503[B]	23/23	0.73	0.21	13,34,48,49	43
4	IRV	B	503[A]	23/23	0.77	0.19	14,29,47,54	43
4	IRV	B	503[B]	23/23	0.77	0.19	18,34,54,54	43
3	HOA	B	502	2/2	0.97	0.16	21,25,33,39	0
2	HEM	B	501	43/43	0.98	0.09	11,15,27,33	0
2	HEM	A	501	43/43	0.98	0.09	10,16,24,30	0
3	HOA	A	502	2/2	0.99	0.09	21,25,31,38	0

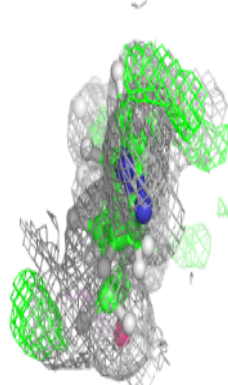
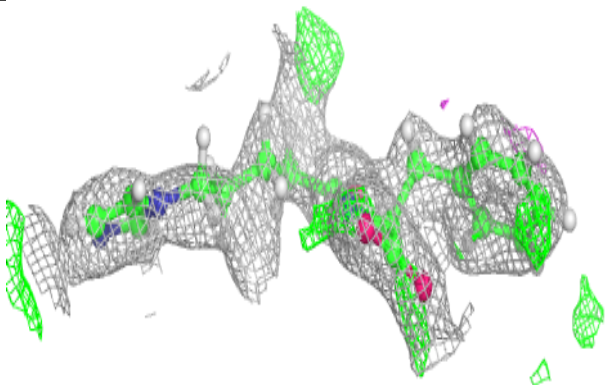
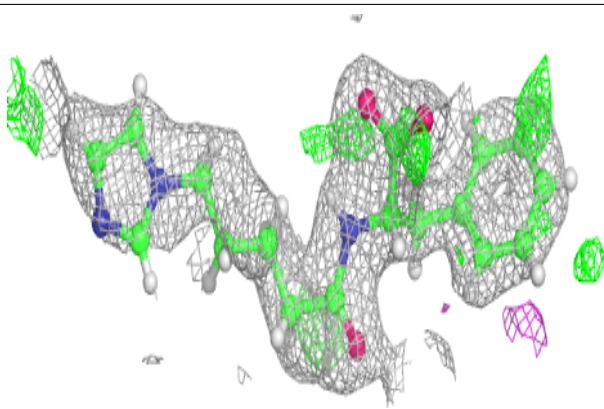
The following is a graphical depiction of the model fit to experimental electron density of all instances of the Ligand of Interest. In addition, ligands with molecular weight > 250 and outliers as shown on the geometry validation Tables will also be included. Each fit is shown from different orientation to approximate a three-dimensional view.

Electron density around IRV A 503 (A):

$2mF_o-DF_c$ (at 0.7 rmsd) in gray
 mF_o-DF_c (at 3 rmsd) in purple (negative)
and green (positive)

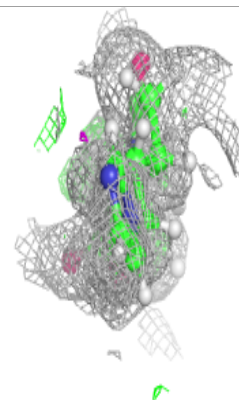
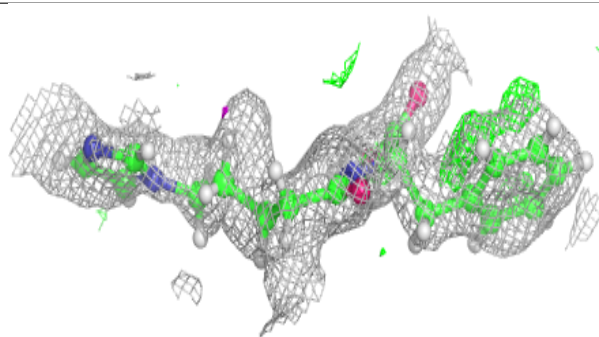
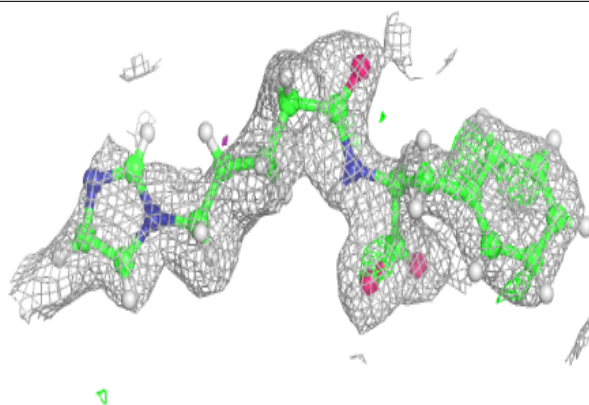
**Electron density around IRV A 503 (B):**

$2mF_o-DF_c$ (at 0.7 rmsd) in gray
 mF_o-DF_c (at 3 rmsd) in purple (negative)
and green (positive)

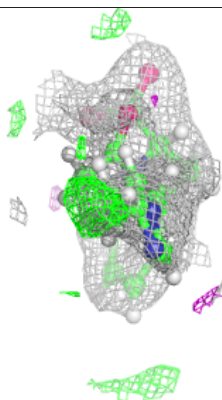
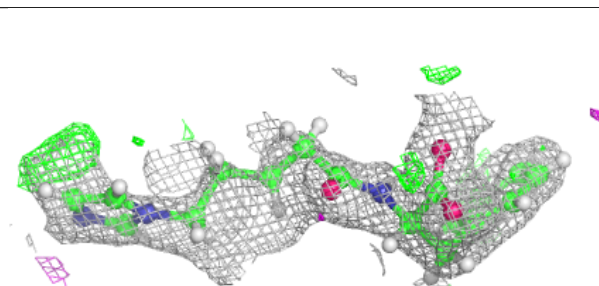
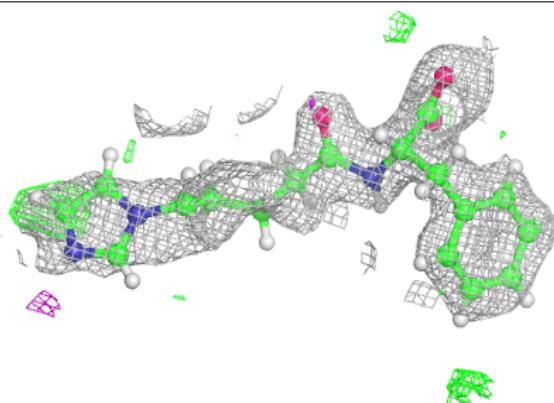


Electron density around IRV B 503 (A):

$2mF_o-DF_c$ (at 0.7 rmsd) in gray
 mF_o-DF_c (at 3 rmsd) in purple (negative)
and green (positive)

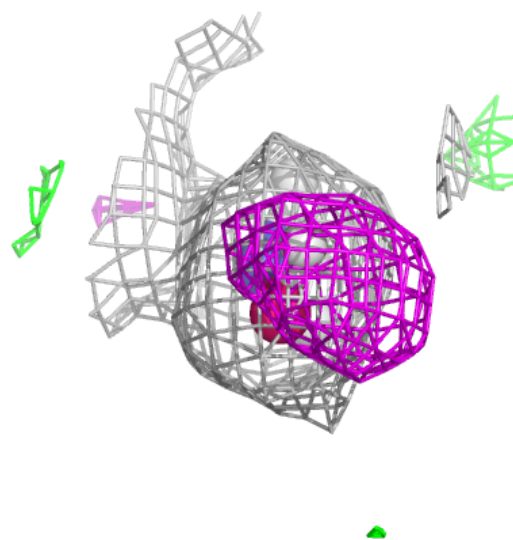
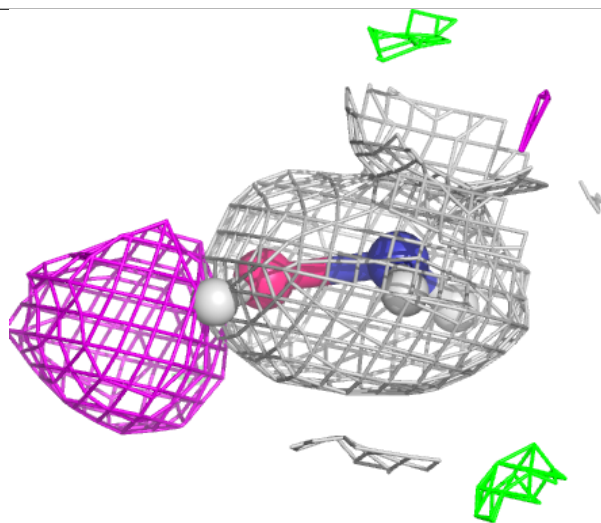
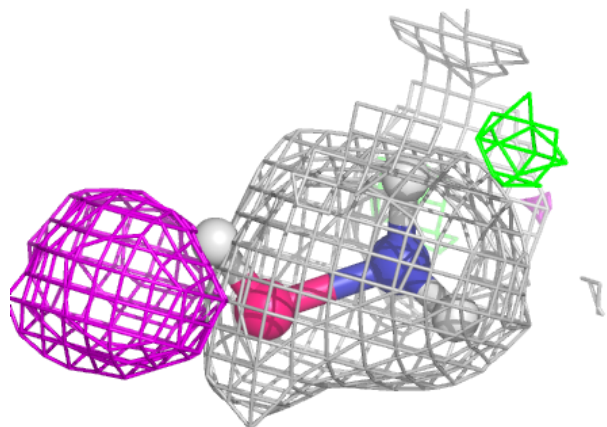
**Electron density around IRV B 503 (B):**

$2mF_o-DF_c$ (at 0.7 rmsd) in gray
 mF_o-DF_c (at 3 rmsd) in purple (negative)
and green (positive)



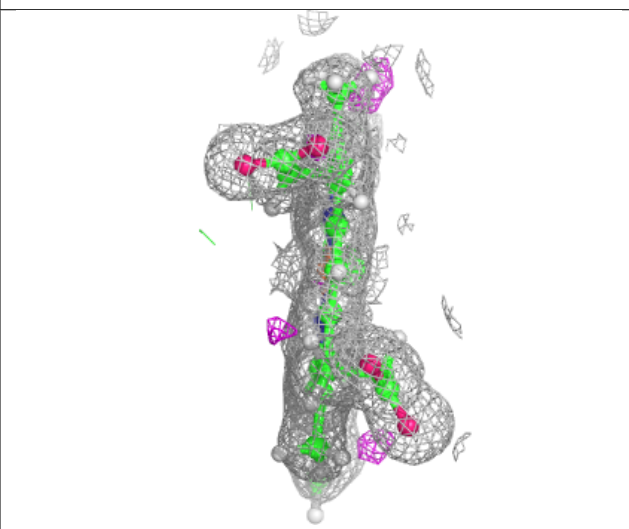
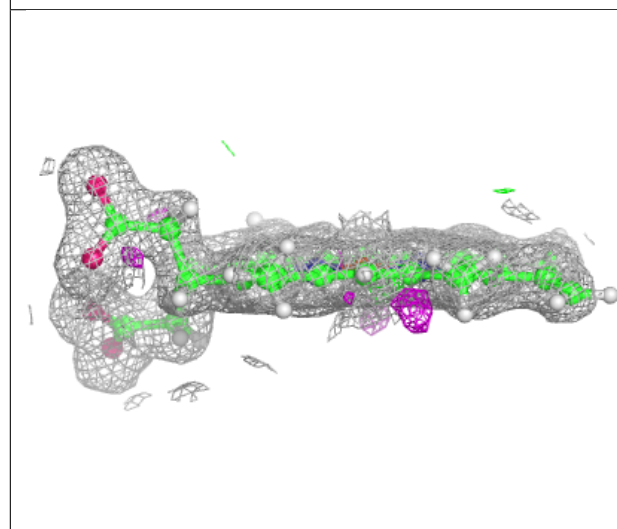
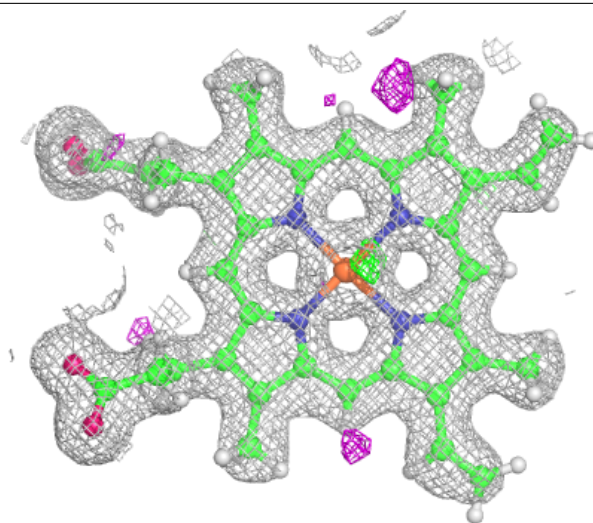
Electron density around HOA B 502:

$2mF_o-DF_c$ (at 0.7 rmsd) in gray
 mF_o-DF_c (at 3 rmsd) in purple (negative)
and green (positive)



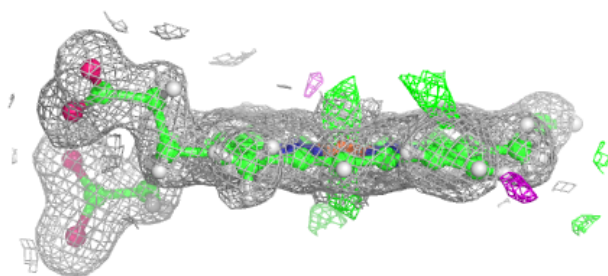
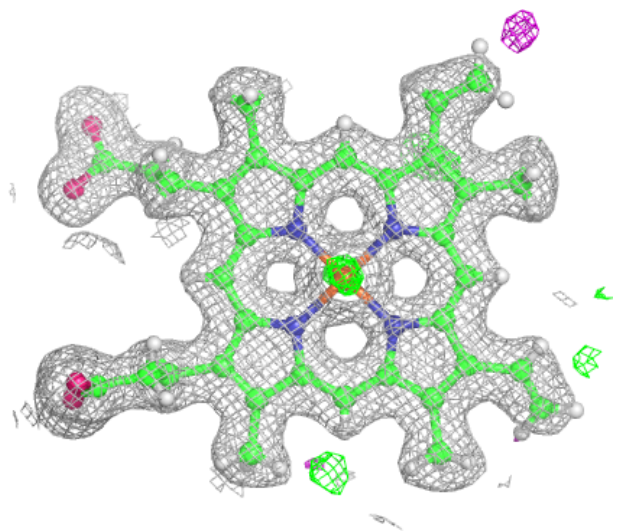
Electron density around HEM B 501:

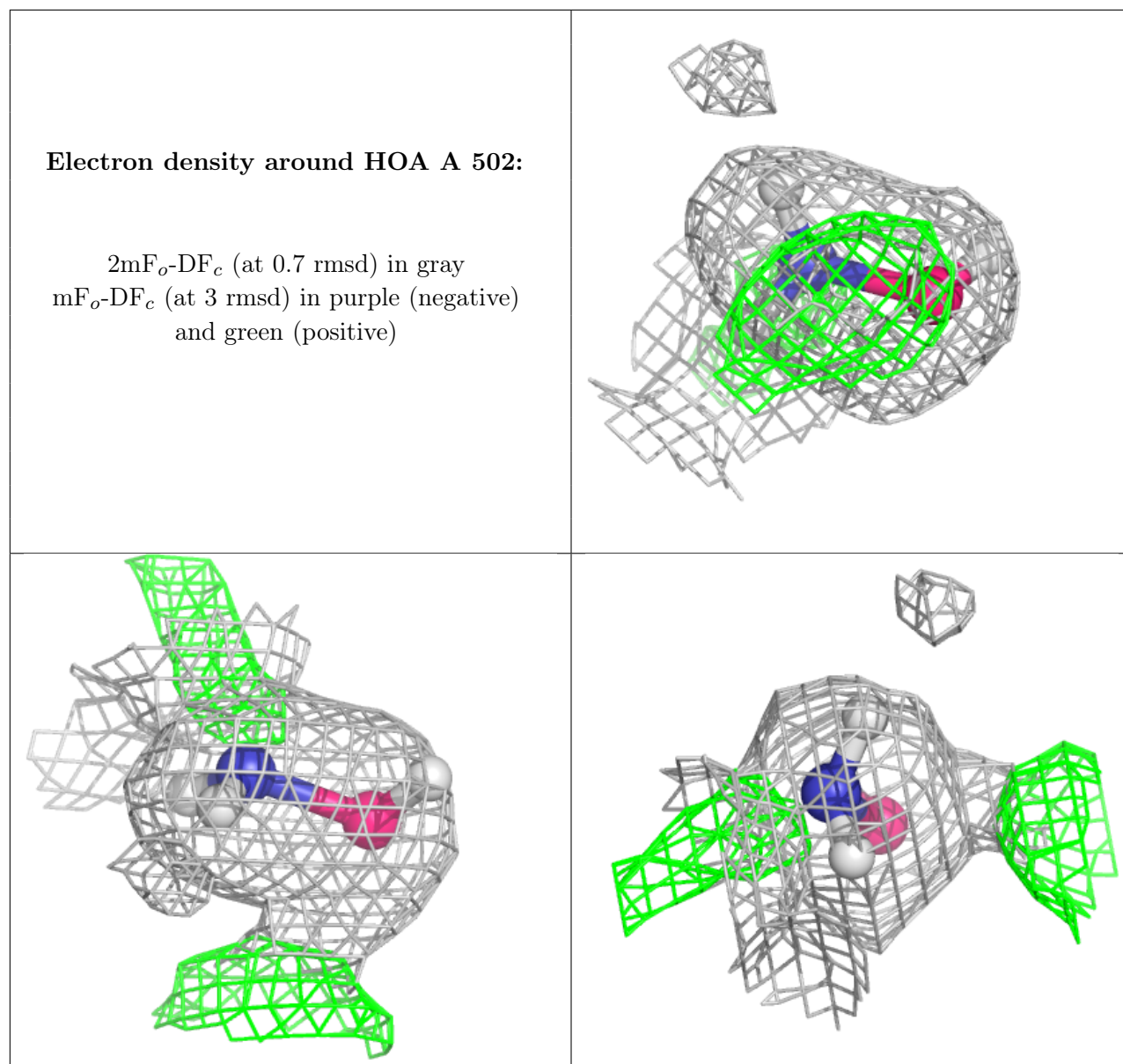
$2mF_o-DF_c$ (at 0.7 rmsd) in gray
 mF_o-DF_c (at 3 rmsd) in purple (negative)
and green (positive)



Electron density around HEM A 501:

$2mF_o-DF_c$ (at 0.7 rmsd) in gray
 mF_o-DF_c (at 3 rmsd) in purple (negative)
and green (positive)





6.5 Other polymers [i](#)

There are no such residues in this entry.