



# Full wwPDB X-ray Structure Validation Report ⓘ

Dec 14, 2023 – 02:48 am GMT

PDB ID : 2YEJ  
Title : HSP90 inhibitors and drugs from fragment and virtual screening  
Authors : Roughley, S.D.; Hubbard, R.E.; Baker, L.M.  
Deposited on : 2011-03-25  
Resolution : 2.20 Å(reported)

This is a Full wwPDB X-ray Structure Validation Report for a publicly released PDB entry.

We welcome your comments at [validation@mail.wwpdb.org](mailto:validation@mail.wwpdb.org)

A user guide is available at

<https://www.wwpdb.org/validation/2017/XrayValidationReportHelp>

with specific help available everywhere you see the ⓘ symbol.

The types of validation reports are described at

<http://www.wwpdb.org/validation/2017/FAQs#types>.

---

The following versions of software and data (see [references ⓘ](#)) were used in the production of this report:

MolProbity : 4.02b-467  
Mogul : 1.8.4, CSD as541be (2020)  
Xtriage (Phenix) : 1.13  
EDS : 2.36  
Percentile statistics : 20191225.v01 (using entries in the PDB archive December 25th 2019)  
Refmac : 5.8.0158  
CCP4 : 7.0.044 (Gargrove)  
Ideal geometry (proteins) : Engh & Huber (2001)  
Ideal geometry (DNA, RNA) : Parkinson et al. (1996)  
Validation Pipeline (wwPDB-VP) : 2.36

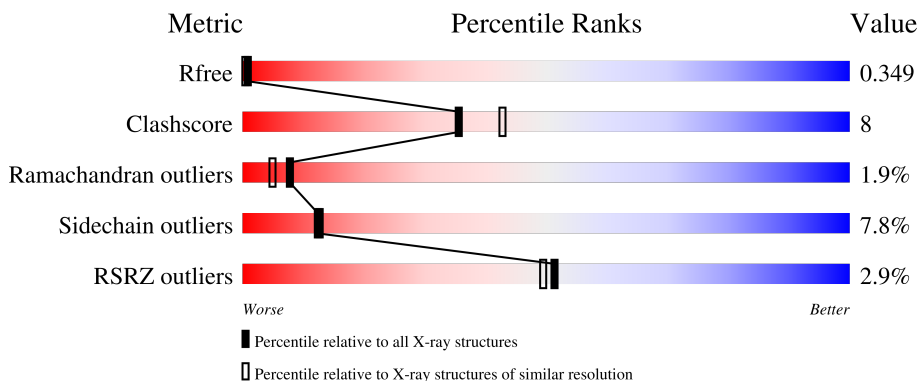
# 1 Overall quality at a glance

The following experimental techniques were used to determine the structure:

*X-RAY DIFFRACTION*

The reported resolution of this entry is 2.20 Å.

Percentile scores (ranging between 0-100) for global validation metrics of the entry are shown in the following graphic. The table shows the number of entries on which the scores are based.



Metric	Whole archive (#Entries)	Similar resolution (#Entries, resolution range(Å))
$R_{free}$	130704	4898 (2.20-2.20)
Clashscore	141614	5594 (2.20-2.20)
Ramachandran outliers	138981	5503 (2.20-2.20)
Sidechain outliers	138945	5504 (2.20-2.20)
RSRZ outliers	127900	4800 (2.20-2.20)

The table below summarises the geometric issues observed across the polymeric chains and their fit to the electron density. The red, orange, yellow and green segments of the lower bar indicate the fraction of residues that contain outliers for  $\geq 3$ , 2, 1 and 0 types of geometric quality criteria respectively. A grey segment represents the fraction of residues that are not modelled. The numeric value for each fraction is indicated below the corresponding segment, with a dot representing fractions  $\leq 5\%$ . The upper red bar (where present) indicates the fraction of residues that have poor fit to the electron density. The numeric value is given above the bar.

Mol	Chain	Length	Quality of chain
1	A	252	

The following table lists non-polymeric compounds, carbohydrate monomers and non-standard residues in protein, DNA, RNA chains that are outliers for geometric or electron-density-fit criteria:

Mol	Type	Chain	Res	Chirality	Geometry	Clashes	Electron density
4	ZZ3	A	1226	-	X	-	-

## 2 Entry composition

There are 5 unique types of molecules in this entry. The entry contains 1829 atoms, of which 0 are hydrogens and 0 are deuteriums.

In the tables below, the ZeroOcc column contains the number of atoms modelled with zero occupancy, the AltConf column contains the number of residues with at least one atom in alternate conformation and the Trace column contains the number of residues modelled with at most 2 atoms.

- Molecule 1 is a protein called HEAT SHOCK PROTEIN HSP 90-ALPHA.

Mol	Chain	Residues	Atoms					ZeroOcc	AltConf	Trace
			Total	C	N	O	S			
1	A	209	1637	1039	272	321	5	0	0	1

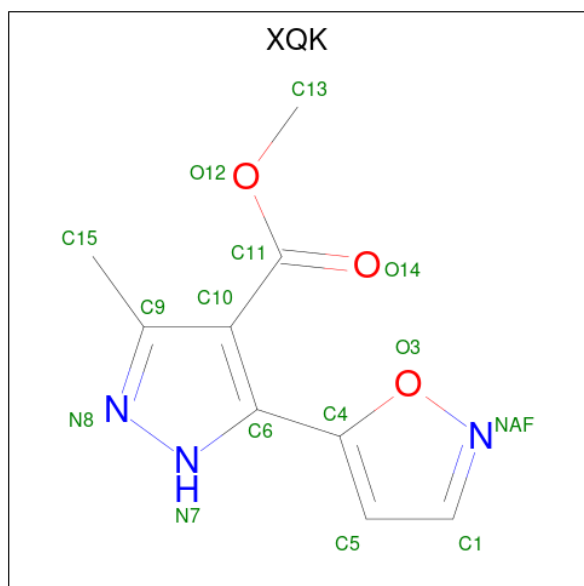
There are 25 discrepancies between the modelled and reference sequences:

Chain	Residue	Modelled	Actual	Comment	Reference
A	-15	MET	-	expression tag	UNP P07900
A	-14	GLY	-	expression tag	UNP P07900
A	-13	HIS	-	expression tag	UNP P07900
A	-12	HIS	-	expression tag	UNP P07900
A	-11	HIS	-	expression tag	UNP P07900
A	-10	HIS	-	expression tag	UNP P07900
A	-9	HIS	-	expression tag	UNP P07900
A	-8	HIS	-	expression tag	UNP P07900
A	-7	HIS	-	expression tag	UNP P07900
A	-6	HIS	-	expression tag	UNP P07900
A	-5	HIS	-	expression tag	UNP P07900
A	-4	HIS	-	expression tag	UNP P07900
A	-3	SER	-	expression tag	UNP P07900
A	-2	SER	-	expression tag	UNP P07900
A	-1	GLY	-	expression tag	UNP P07900
A	0	HIS	-	expression tag	UNP P07900
A	1	ILE	-	expression tag	UNP P07900
A	2	ASP	-	expression tag	UNP P07900
A	3	ASP	-	expression tag	UNP P07900
A	4	ALA	-	expression tag	UNP P07900
A	5	ASP	-	expression tag	UNP P07900
A	6	LYS	-	expression tag	UNP P07900
A	7	HIS	-	expression tag	UNP P07900
A	8	MET	-	expression tag	UNP P07900
A	16	HIS	GLU	conflict	UNP P07900

- Molecule 2 is MAGNESIUM ION (three-letter code: MG) (formula: Mg).

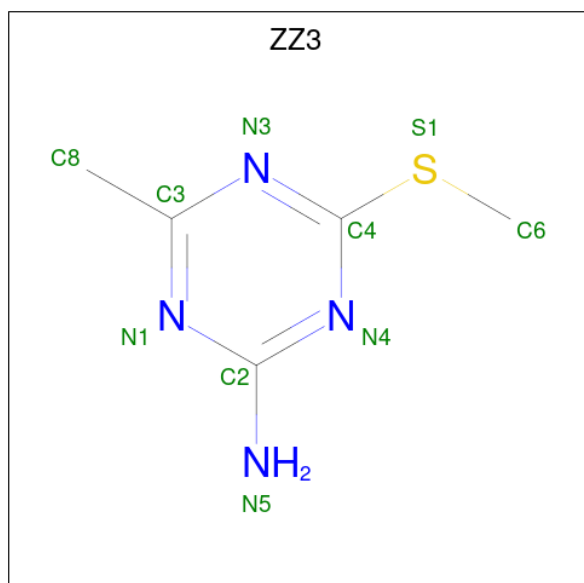
Mol	Chain	Residues	Atoms	ZeroOcc	AltConf
2	A	1	Total Mg 1 1	0	0

- Molecule 3 is METHYL 5-ISOXAZOL-5-YL-3-METHYL-1H-PYRAZOLE-4-CARBOXYLATE (three-letter code: XQK) (formula:  $C_9H_9N_3O_3$ ).



Mol	Chain	Residues	Atoms	ZeroOcc	AltConf
3	A	1	Total C N O 15 9 3 3	0	0

- Molecule 4 is 4-METHYL-6-(METHYLSULFANYL)-1,3,5-TRIAZIN-2-AMINE (three-letter code: ZZ3) (formula:  $C_5H_8N_4S$ ).



Mol	Chain	Residues	Atoms				ZeroOcc	AltConf
4	A	1	Total	C	N	S	0	0
			10	5	4	1		

- Molecule 5 is water.

Mol	Chain	Residues	Atoms		ZeroOcc	AltConf
5	A	166	Total	O	0	0
			166	166		



## 4 Data and refinement statistics

Property	Value	Source
Space group	I 2 2 2	Depositor
Cell constants a, b, c, $\alpha$ , $\beta$ , $\gamma$	67.04Å 90.35Å 98.86Å 90.00° 90.00° 90.00°	Depositor
Resolution (Å)	67.42 – 2.20 23.64 – 2.20	Depositor EDS
% Data completeness (in resolution range)	97.3 (67.42-2.20) 97.4 (23.64-2.20)	Depositor EDS
$R_{merge}$	0.06	Depositor
$R_{sym}$	(Not available)	Depositor
$\langle I/\sigma(I) \rangle$ <sup>1</sup>	1.94 (at 2.19Å)	Xtrriage
Refinement program	REFMAC 5.5.0109	Depositor
R, $R_{free}$	0.246 , 0.349 0.245 , 0.349	Depositor DCC
$R_{free}$ test set	767 reflections (5.06%)	wwPDB-VP
Wilson B-factor (Å <sup>2</sup> )	42.7	Xtrriage
Anisotropy	0.112	Xtrriage
Bulk solvent $k_{sol}$ (e/Å <sup>3</sup> ), $B_{sol}$ (Å <sup>2</sup> )	0.34 , 39.6	EDS
L-test for twinning <sup>2</sup>	$\langle  L  \rangle = 0.50$ , $\langle L^2 \rangle = 0.34$	Xtrriage
Estimated twinning fraction	No twinning to report.	Xtrriage
$F_o, F_c$ correlation	0.94	EDS
Total number of atoms	1829	wwPDB-VP
Average B, all atoms (Å <sup>2</sup> )	51.0	wwPDB-VP

Xtrriage's analysis on translational NCS is as follows: *The largest off-origin peak in the Patterson function is 7.69% of the height of the origin peak. No significant pseudotranslation is detected.*

<sup>1</sup>Intensities estimated from amplitudes.

<sup>2</sup>Theoretical values of  $\langle |L| \rangle$ ,  $\langle L^2 \rangle$  for acentric reflections are 0.5, 0.333 respectively for untwinned datasets, and 0.375, 0.2 for perfectly twinned datasets.

## 5 Model quality [i](#)

### 5.1 Standard geometry [i](#)

Bond lengths and bond angles in the following residue types are not validated in this section: XQK, MG, ZZ3

The Z score for a bond length (or angle) is the number of standard deviations the observed value is removed from the expected value. A bond length (or angle) with  $|Z| > 5$  is considered an outlier worth inspection. RMSZ is the root-mean-square of all Z scores of the bond lengths (or angles).

Mol	Chain	Bond lengths		Bond angles	
		RMSZ	# Z  >5	RMSZ	# Z  >5
1	A	0.70	0/1664	0.76	0/2245

Chiral center outliers are detected by calculating the chiral volume of a chiral center and verifying if the center is modelled as a planar moiety or with the opposite hand. A planarity outlier is detected by checking planarity of atoms in a peptide group, atoms in a mainchain group or atoms of a sidechain that are expected to be planar.

Mol	Chain	#Chirality outliers	#Planarity outliers
1	A	0	1

There are no bond length outliers.

There are no bond angle outliers.

There are no chirality outliers.

All (1) planarity outliers are listed below:

Mol	Chain	Res	Type	Group
1	A	123	GLN	Peptide

### 5.2 Too-close contacts [i](#)

In the following table, the Non-H and H(model) columns list the number of non-hydrogen atoms and hydrogen atoms in the chain respectively. The H(added) column lists the number of hydrogen atoms added and optimized by MolProbity. The Clashes column lists the number of clashes within the asymmetric unit, whereas Symm-Clashes lists symmetry-related clashes.

Mol	Chain	Non-H	H(model)	H(added)	Clashes	Symm-Clashes
1	A	1637	0	1635	23	0
2	A	1	0	0	0	0

*Continued on next page...*



Continued from previous page...

Mol	Chain	Non-H	H(model)	H(added)	Clashes	Symm-Clashes
3	A	15	0	9	4	0
4	A	10	0	8	0	0
5	A	166	0	0	7	0
All	All	1829	0	1652	27	0

The all-atom clashscore is defined as the number of clashes found per 1000 atoms (including hydrogen atoms). The all-atom clashscore for this structure is 8.

All (27) close contacts within the same asymmetric unit are listed below, sorted by their clash magnitude.

Atom-1	Atom-2	Interatomic distance (Å)	Clash overlap (Å)
3:A:1225:XQK:O14	3:A:1225:XQK:H5	1.61	1.00
1:A:52:SER:O	1:A:56:LEU:HD12	1.88	0.74
1:A:176:THR:HG22	5:A:2123:HOH:O	1.95	0.64
1:A:191:LYS:NZ	5:A:2130:HOH:O	2.35	0.57
3:A:1225:XQK:O14	3:A:1225:XQK:C5	2.46	0.55
1:A:158:GLU:HG3	5:A:2107:HOH:O	2.07	0.54
3:A:1225:XQK:H5	3:A:1225:XQK:C11	2.36	0.54
1:A:205:GLU:O	1:A:209:LYS:HB2	2.08	0.53
1:A:48:LEU:HD13	1:A:91:ILE:HD13	1.92	0.52
1:A:48:LEU:CD1	1:A:91:ILE:HD13	2.41	0.51
1:A:102:ASP:HA	1:A:106:ASN:HB2	1.93	0.51
1:A:159:GLN:OE1	1:A:180:MET:HG2	2.13	0.48
1:A:174:THR:HG23	5:A:2121:HOH:O	2.12	0.48
1:A:194:GLN:NE2	1:A:197:TYR:HE2	2.12	0.47
1:A:151:ILE:HB	1:A:185:LYS:HB2	1.97	0.46
3:A:1225:XQK:C5	3:A:1225:XQK:C11	2.94	0.45
1:A:99:THR:O	1:A:102:ASP:HB2	2.17	0.45
1:A:92:VAL:HG22	1:A:185:LYS:HG2	1.98	0.45
1:A:173:ARG:HD3	5:A:2119:HOH:O	2.17	0.45
1:A:86:ASP:O	1:A:88:THR:HG23	2.19	0.42
1:A:45:LEU:HG	1:A:49:ILE:HD12	2.02	0.42
1:A:99:THR:HG22	1:A:157:ASP:HB2	2.01	0.41
1:A:161:ALA:HB3	1:A:173:ARG:HG2	2.02	0.41
1:A:164:SER:HB2	1:A:170:PHE:HA	2.01	0.41
1:A:118:PHE:HD1	1:A:134:PHE:CD2	2.38	0.41
1:A:224:LYS:N	5:A:2165:HOH:O	2.53	0.41
1:A:186:VAL:HG23	5:A:2074:HOH:O	2.20	0.40

There are no symmetry-related clashes.

## 5.3 Torsion angles [i](#)

### 5.3.1 Protein backbone [i](#)

In the following table, the Percentiles column shows the percent Ramachandran outliers of the chain as a percentile score with respect to all X-ray entries followed by that with respect to entries of similar resolution.

The Analysed column shows the number of residues for which the backbone conformation was analysed, and the total number of residues.

Mol	Chain	Analysed	Favoured	Allowed	Outliers	Percentiles
1	A	207/252 (82%)	191 (92%)	12 (6%)	4 (2%)	8 5

All (4) Ramachandran outliers are listed below:

Mol	Chain	Res	Type
1	A	124	ALA
1	A	85	GLN
1	A	195	THR
1	A	155	ASN

### 5.3.2 Protein sidechains [i](#)

In the following table, the Percentiles column shows the percent sidechain outliers of the chain as a percentile score with respect to all X-ray entries followed by that with respect to entries of similar resolution.

The Analysed column shows the number of residues for which the sidechain conformation was analysed, and the total number of residues.

Mol	Chain	Analysed	Rotameric	Outliers	Percentiles
1	A	179/219 (82%)	165 (92%)	14 (8%)	12 13

All (14) residues with a non-rotameric sidechain are listed below:

Mol	Chain	Res	Type
1	A	31	SER
1	A	46	ARG
1	A	74	LYS
1	A	86	ASP
1	A	112	LYS
1	A	113	SER
1	A	123	GLN

*Continued on next page...*

*Continued from previous page...*

Mol	Chain	Res	Type
1	A	128	ILE
1	A	157	ASP
1	A	158	GLU
1	A	199	GLU
1	A	209	LYS
1	A	212	GLN
1	A	222	VAL

Sometimes sidechains can be flipped to improve hydrogen bonding and reduce clashes. All (3) such sidechains are listed below:

Mol	Chain	Res	Type
1	A	23	GLN
1	A	79	ASN
1	A	194	GLN

### 5.3.3 RNA [i](#)

There are no RNA molecules in this entry.

### 5.4 Non-standard residues in protein, DNA, RNA chains [i](#)

There are no non-standard protein/DNA/RNA residues in this entry.

### 5.5 Carbohydrates [i](#)

There are no monosaccharides in this entry.

### 5.6 Ligand geometry [i](#)

Of 3 ligands modelled in this entry, 1 is monoatomic - leaving 2 for Mogul analysis.

In the following table, the Counts columns list the number of bonds (or angles) for which Mogul statistics could be retrieved, the number of bonds (or angles) that are observed in the model and the number of bonds (or angles) that are defined in the Chemical Component Dictionary. The Link column lists molecule types, if any, to which the group is linked. The Z score for a bond length (or angle) is the number of standard deviations the observed value is removed from the expected value. A bond length (or angle) with  $|Z| > 2$  is considered an outlier worth inspection. RMSZ is the root-mean-square of all Z scores of the bond lengths (or angles).

Mol	Type	Chain	Res	Link	Bond lengths			Bond angles		
					Counts	RMSZ	# Z  > 2	Counts	RMSZ	# Z  > 2
4	ZZ3	A	1226	-	10,10,10	8.81	8 (80%)	13,13,13	6.16	7 (53%)
3	XQK	A	1225	-	10,16,16	2.48	2 (20%)	8,22,22	2.26	3 (37%)

In the following table, the Chirals column lists the number of chiral outliers, the number of chiral centers analysed, the number of these observed in the model and the number defined in the Chemical Component Dictionary. Similar counts are reported in the Torsion and Rings columns. '-' means no outliers of that kind were identified.

Mol	Type	Chain	Res	Link	Chirals	Torsions	Rings
4	ZZ3	A	1226	-	-	0/2/2/2	0/1/1/1
3	XQK	A	1225	-	-	2/6/10/10	0/2/2/2

All (10) bond length outliers are listed below:

Mol	Chain	Res	Type	Atoms	Z	Observed(Å)	Ideal(Å)
4	A	1226	ZZ3	C4-N3	-11.71	1.16	1.34
4	A	1226	ZZ3	C4-N4	-11.67	1.16	1.34
4	A	1226	ZZ3	C2-N1	-10.70	1.16	1.35
4	A	1226	ZZ3	C2-N4	-10.69	1.16	1.35
4	A	1226	ZZ3	C3-N1	-9.87	1.16	1.34
4	A	1226	ZZ3	C3-N3	-9.80	1.16	1.34
3	A	1225	XQK	N7-N8	-6.79	1.24	1.37
4	A	1226	ZZ3	C2-N5	6.79	1.47	1.33
4	A	1226	ZZ3	C4-S1	5.62	1.80	1.75
3	A	1225	XQK	C5-C4	-2.25	1.33	1.42

All (10) bond angle outliers are listed below:

Mol	Chain	Res	Type	Atoms	Z	Observed(°)	Ideal(°)
4	A	1226	ZZ3	C6-S1-C4	16.94	114.91	102.27
4	A	1226	ZZ3	C4-N4-C2	11.36	120.02	113.87
3	A	1225	XQK	O12-C11-C10	3.85	120.00	111.90
4	A	1226	ZZ3	N3-C4-N4	-3.79	120.01	126.95
4	A	1226	ZZ3	C2-N1-C3	3.71	120.03	115.25
4	A	1226	ZZ3	N1-C2-N4	-3.46	119.99	125.42
4	A	1226	ZZ3	C3-N3-C4	3.42	119.95	113.63
3	A	1225	XQK	C13-O12-C11	-3.30	109.48	115.83
4	A	1226	ZZ3	N3-C3-N1	-3.11	119.99	125.72
3	A	1225	XQK	C15-C9-N8	2.98	126.19	119.65

There are no chirality outliers.

All (2) torsion outliers are listed below:

Mol	Chain	Res	Type	Atoms
3	A	1225	XQK	C10-C11-O12-C13
3	A	1225	XQK	O14-C11-O12-C13

There are no ring outliers.

1 monomer is involved in 4 short contacts:

Mol	Chain	Res	Type	Clashes	Symm-Clashes
3	A	1225	XQK	4	0

## 5.7 Other polymers [i](#)

There are no such residues in this entry.

## 5.8 Polymer linkage issues [i](#)

There are no chain breaks in this entry.

## 6 Fit of model and data [i](#)

### 6.1 Protein, DNA and RNA chains [i](#)

In the following table, the column labelled ‘#RSRZ> 2’ contains the number (and percentage) of RSRZ outliers, followed by percent RSRZ outliers for the chain as percentile scores relative to all X-ray entries and entries of similar resolution. The OWAB column contains the minimum, median, 95<sup>th</sup> percentile and maximum values of the occupancy-weighted average B-factor per residue. The column labelled ‘Q< 0.9’ lists the number of (and percentage) of residues with an average occupancy less than 0.9.

Mol	Chain	Analysed	<RSRZ>	#RSRZ>2	OWAB(Å <sup>2</sup> )	Q<0.9
1	A	209/252 (82%)	0.14	6 (2%) 51 49	35, 50, 66, 79	1 (0%)

All (6) RSRZ outliers are listed below:

Mol	Chain	Res	Type	RSRZ
1	A	124	ALA	3.8
1	A	91	ILE	2.7
1	A	186	VAL	2.3
1	A	123	GLN	2.2
1	A	85	GLN	2.2
1	A	89	LEU	2.1

### 6.2 Non-standard residues in protein, DNA, RNA chains [i](#)

There are no non-standard protein/DNA/RNA residues in this entry.

### 6.3 Carbohydrates [i](#)

There are no monosaccharides in this entry.

### 6.4 Ligands [i](#)

In the following table, the Atoms column lists the number of modelled atoms in the group and the number defined in the chemical component dictionary. The B-factors column lists the minimum, median, 95<sup>th</sup> percentile and maximum values of B factors of atoms in the group. The column labelled ‘Q< 0.9’ lists the number of atoms with occupancy less than 0.9.

Mol	Type	Chain	Res	Atoms	RSCC	RSR	B-factors(Å <sup>2</sup> )	Q<0.9
3	XQK	A	1225	15/15	0.83	0.26	78,81,86,87	0

*Continued on next page...*

*Continued from previous page...*

Mol	Type	Chain	Res	Atoms	RSCC	RSR	B-factors( $\text{\AA}^2$ )	Q<0.9
2	MG	A	1224	1/1	0.94	0.22	48,48,48,48	0
4	ZZ3	A	1226	10/10	0.95	0.16	50,53,55,57	0

## 6.5 Other polymers [i](#)

There are no such residues in this entry.