



Full wwPDB X-ray Structure Validation Report ⓘ

Nov 13, 2023 – 11:01 PM JST

PDB ID : 5YD2
Title : Crystal Structure of Delta 4 mutant of EhPSAT (Phosphoserine aminotransferase of Entamoeba histolytica)
Authors : Singh, R.K.; Gourinath, S.
Deposited on : 2017-09-10
Resolution : 2.35 Å(reported)

This is a Full wwPDB X-ray Structure Validation Report for a publicly released PDB entry.

We welcome your comments at validation@mail.wwpdb.org

A user guide is available at

<https://www.wwpdb.org/validation/2017/XrayValidationReportHelp>

with specific help available everywhere you see the ⓘ symbol.

The types of validation reports are described at

<http://www.wwpdb.org/validation/2017/FAQs#types>.

The following versions of software and data (see [references ⓘ](#)) were used in the production of this report:

MolProbity : 4.02b-467
Mogul : 1.8.5 (274361), CSD as541be (2020)
Xtriage (Phenix) : 1.13
EDS : 2.36
Percentile statistics : 20191225.v01 (using entries in the PDB archive December 25th 2019)
Refmac : 5.8.0158
CCP4 : 7.0.044 (Gargrove)
Ideal geometry (proteins) : Engh & Huber (2001)
Ideal geometry (DNA, RNA) : Parkinson et al. (1996)
Validation Pipeline (wwPDB-VP) : 2.36

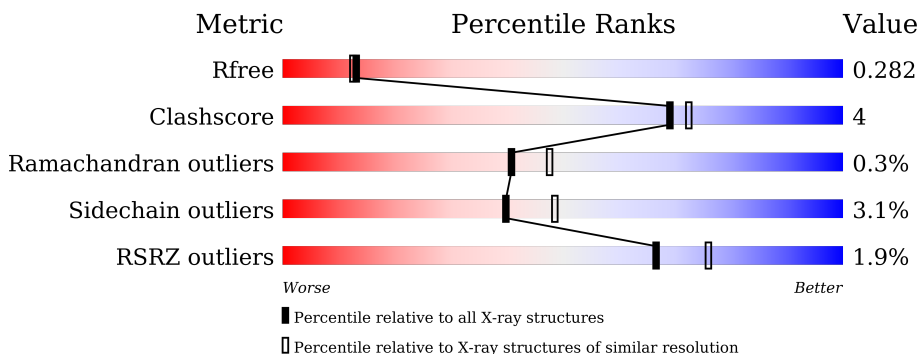
1 Overall quality at a glance

The following experimental techniques were used to determine the structure:

X-RAY DIFFRACTION

The reported resolution of this entry is 2.35 Å.

Percentile scores (ranging between 0-100) for global validation metrics of the entry are shown in the following graphic. The table shows the number of entries on which the scores are based.



Metric	Whole archive (#Entries)	Similar resolution (#Entries, resolution range(Å))
R_{free}	130704	1164 (2.36-2.36)
Clashscore	141614	1232 (2.36-2.36)
Ramachandran outliers	138981	1211 (2.36-2.36)
Sidechain outliers	138945	1212 (2.36-2.36)
RSRZ outliers	127900	1150 (2.36-2.36)

The table below summarises the geometric issues observed across the polymeric chains and their fit to the electron density. The red, orange, yellow and green segments of the lower bar indicate the fraction of residues that contain outliers for ≥ 3 , 2, 1 and 0 types of geometric quality criteria respectively. A grey segment represents the fraction of residues that are not modelled. The numeric value for each fraction is indicated below the corresponding segment, with a dot representing fractions $\leq 5\%$. The upper red bar (where present) indicates the fraction of residues that have poor fit to the electron density. The numeric value is given above the bar.

Mol	Chain	Length	Quality of chain
1	A	354	 88% 9% ..
1	B	354	 91% 6% .

2 Entry composition

There are 4 unique types of molecules in this entry. The entry contains 5597 atoms, of which 0 are hydrogens and 0 are deuteriums.

In the tables below, the ZeroOcc column contains the number of atoms modelled with zero occupancy, the AltConf column contains the number of residues with at least one atom in alternate conformation and the Trace column contains the number of residues modelled with at most 2 atoms.

- Molecule 1 is a protein called Phosphoserine aminotransferase.

Mol	Chain	Residues	Atoms					ZeroOcc	AltConf	Trace
			Total	C	N	O	S			
1	A	349	2782	1788	464	515	15	0	0	0
1	B	346	2757	1772	459	511	15	0	0	0

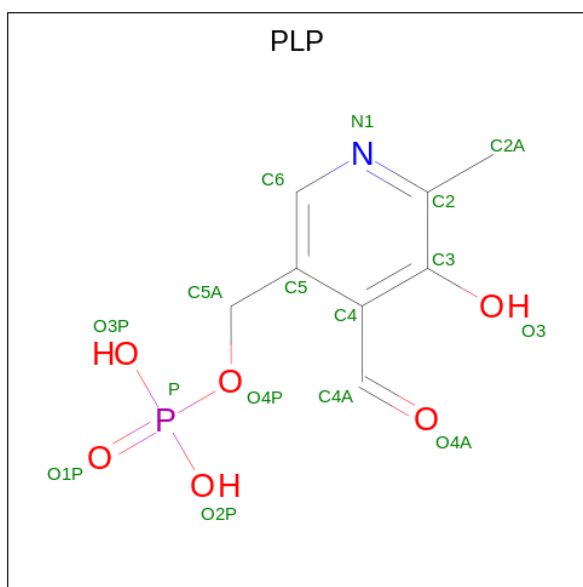
There are 8 discrepancies between the modelled and reference sequences:

Chain	Residue	Modelled	Actual	Comment	Reference
A	?	-	ALA	deletion	UNP M7XC02
A	?	-	GLY	deletion	UNP M7XC02
A	?	-	PRO	deletion	UNP M7XC02
A	?	-	ALA	deletion	UNP M7XC02
B	?	-	ALA	deletion	UNP M7XC02
B	?	-	GLY	deletion	UNP M7XC02
B	?	-	PRO	deletion	UNP M7XC02
B	?	-	ALA	deletion	UNP M7XC02

- Molecule 2 is CHLORIDE ION (three-letter code: CL) (formula: Cl).

Mol	Chain	Residues	Atoms		ZeroOcc	AltConf
2	A	1	Total	Cl	0	0
			1	1		
2	B	1	Total	Cl	0	0
			1	1		

- Molecule 3 is PYRIDOXAL-5'-PHOSPHATE (three-letter code: PLP) (formula: C₈H₁₀NO₆P).



Mol	Chain	Residues	Atoms					ZeroOcc	AltConf
			Total	C	N	O	P		
3	A	1	16	8	1	6	1	0	0
3	B	1	16	8	1	6	1	0	0

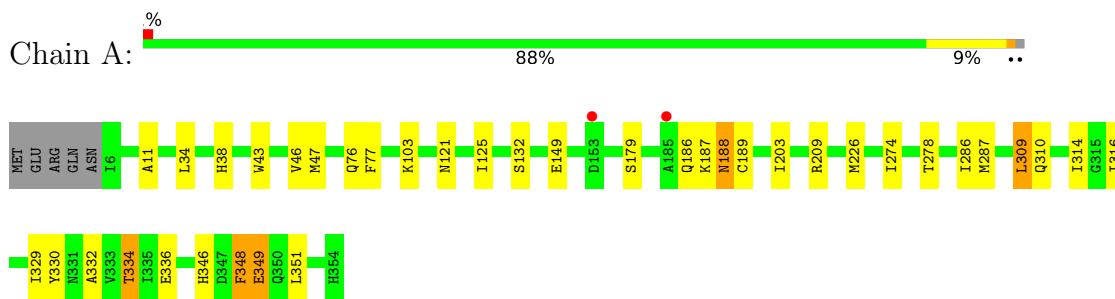
- Molecule 4 is water.

Mol	Chain	Residues	Atoms		ZeroOcc	AltConf
			Total	O		
4	A	16	16	16	0	0
4	B	8	8	8	0	0

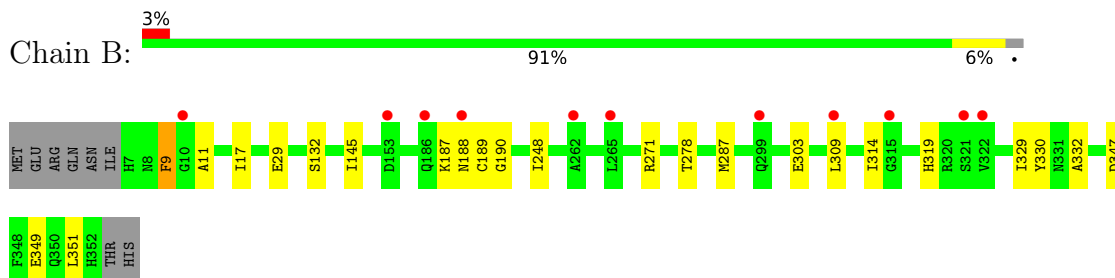
3 Residue-property plots [i](#)

These plots are drawn for all protein, RNA, DNA and oligosaccharide chains in the entry. The first graphic for a chain summarises the proportions of the various outlier classes displayed in the second graphic. The second graphic shows the sequence view annotated by issues in geometry and electron density. Residues are color-coded according to the number of geometric quality criteria for which they contain at least one outlier: green = 0, yellow = 1, orange = 2 and red = 3 or more. A red dot above a residue indicates a poor fit to the electron density ($RSRZ > 2$). Stretches of 2 or more consecutive residues without any outlier are shown as a green connector. Residues present in the sample, but not in the model, are shown in grey.

- Molecule 1: Phosphoserine aminotransferase



- Molecule 1: Phosphoserine aminotransferase



4 Data and refinement statistics

Property	Value	Source
Space group	C 1 2 1	Depositor
Cell constants a, b, c, α , β , γ	132.24Å 67.90Å 95.03Å 90.00° 110.93° 90.00°	Depositor
Resolution (Å)	50.00 – 2.35 44.38 – 2.35	Depositor EDS
% Data completeness (in resolution range)	94.3 (50.00-2.35) 93.9 (44.38-2.35)	Depositor EDS
R_{merge}	0.06	Depositor
R_{sym}	(Not available)	Depositor
$\langle I/\sigma(I) \rangle$ ¹	3.10 (at 2.34Å)	Xtrriage
Refinement program	REFMAC 5.8.0049	Depositor
R, R_{free}	0.229 , 0.287 0.229 , 0.282	Depositor DCC
R_{free} test set	1595 reflections (5.12%)	wwPDB-VP
Wilson B-factor (Å ²)	52.1	Xtrriage
Anisotropy	0.456	Xtrriage
Bulk solvent k_{sol} (e/Å ³), B_{sol} (Å ²)	0.27 , 25.8	EDS
L-test for twinning ²	$\langle L \rangle = 0.52$, $\langle L^2 \rangle = 0.36$	Xtrriage
Estimated twinning fraction	No twinning to report.	Xtrriage
F_o, F_c correlation	0.95	EDS
Total number of atoms	5597	wwPDB-VP
Average B, all atoms (Å ²)	64.0	wwPDB-VP

Xtrriage's analysis on translational NCS is as follows: *The largest off-origin peak in the Patterson function is 5.16% of the height of the origin peak. No significant pseudotranslation is detected.*

¹Intensities estimated from amplitudes.

²Theoretical values of $\langle |L| \rangle$, $\langle L^2 \rangle$ for acentric reflections are 0.5, 0.333 respectively for untwinned datasets, and 0.375, 0.2 for perfectly twinned datasets.

5 Model quality [i](#)

5.1 Standard geometry [i](#)

Bond lengths and bond angles in the following residue types are not validated in this section: CL, PLP

The Z score for a bond length (or angle) is the number of standard deviations the observed value is removed from the expected value. A bond length (or angle) with $|Z| > 5$ is considered an outlier worth inspection. RMSZ is the root-mean-square of all Z scores of the bond lengths (or angles).

Mol	Chain	Bond lengths		Bond angles	
		RMSZ	# Z >5	RMSZ	# Z >5
1	A	0.67	0/2833	0.77	0/3818
1	B	0.63	0/2807	0.74	1/3782 (0.0%)
All	All	0.65	0/5640	0.76	1/7600 (0.0%)

Chiral center outliers are detected by calculating the chiral volume of a chiral center and verifying if the center is modelled as a planar moiety or with the opposite hand. A planarity outlier is detected by checking planarity of atoms in a peptide group, atoms in a mainchain group or atoms of a sidechain that are expected to be planar.

Mol	Chain	#Chirality outliers	#Planarity outliers
1	A	0	1

There are no bond length outliers.

All (1) bond angle outliers are listed below:

Mol	Chain	Res	Type	Atoms	Z	Observed($^{\circ}$)	Ideal($^{\circ}$)
1	B	9	PHE	N-CA-C	5.33	125.40	111.00

There are no chirality outliers.

All (1) planarity outliers are listed below:

Mol	Chain	Res	Type	Group
1	A	349	GLU	Peptide

5.2 Too-close contacts [i](#)

In the following table, the Non-H and H(model) columns list the number of non-hydrogen atoms and hydrogen atoms in the chain respectively. The H(added) column lists the number of hydrogen atoms added and optimized by MolProbity. The Clashes column lists the number of clashes within

the asymmetric unit, whereas Symm-Clashes lists symmetry-related clashes.

Mol	Chain	Non-H	H(model)	H(added)	Clashes	Symm-Clashes
1	A	2782	0	2844	28	0
1	B	2757	0	2819	15	0
2	A	1	0	0	0	0
2	B	1	0	0	0	0
3	A	16	0	8	1	0
3	B	16	0	8	1	0
4	A	16	0	0	0	0
4	B	8	0	0	0	0
All	All	5597	0	5679	42	0

The all-atom clashscore is defined as the number of clashes found per 1000 atoms (including hydrogen atoms). The all-atom clashscore for this structure is 4.

All (42) close contacts within the same asymmetric unit are listed below, sorted by their clash magnitude.

Atom-1	Atom-2	Interatomic distance (Å)	Clash overlap (Å)
1:B:329:ILE:O	1:B:329:ILE:HD12	1.74	0.87
1:A:329:ILE:HD12	1:A:329:ILE:O	1.74	0.85
1:A:187:LYS:NZ	3:A:402:PLP:O4A	2.19	0.74
1:A:346:HIS:O	1:A:348:PHE:HD1	1.73	0.71
1:A:125:ILE:CD1	1:A:149:GLU:O	2.46	0.64
1:B:329:ILE:O	1:B:329:ILE:CD1	2.47	0.61
1:A:287:MET:CE	1:A:330:TYR:HD1	2.14	0.60
1:A:329:ILE:O	1:A:329:ILE:CD1	2.48	0.60
1:B:287:MET:CE	1:B:330:TYR:HD1	2.15	0.60
1:B:347:ASP:O	1:B:351:LEU:HD13	2.02	0.60
1:A:346:HIS:O	1:A:348:PHE:CD1	2.56	0.58
1:A:187:LYS:O	1:A:188:ASN:HB2	2.06	0.56
1:A:186:GLN:O	1:A:186:GLN:HG2	2.06	0.55
1:A:34:LEU:HD12	1:B:17:ILE:HD13	1.90	0.54
1:A:125:ILE:HD11	1:A:149:GLU:O	2.10	0.52
1:A:346:HIS:C	1:A:348:PHE:H	2.11	0.52
1:A:187:LYS:O	1:A:188:ASN:CB	2.59	0.51
1:A:334:THR:OG1	1:A:336:GLU:OE1	2.28	0.51
1:B:11:ALA:O	1:B:332:ALA:HB3	2.11	0.51
1:A:11:ALA:O	1:A:332:ALA:HB3	2.12	0.49
1:B:329:ILE:O	1:B:329:ILE:CG1	2.60	0.49
1:A:329:ILE:O	1:A:329:ILE:CG1	2.61	0.49
1:A:316:ILE:HG22	1:A:316:ILE:O	2.13	0.48
1:B:187:LYS:NZ	3:B:402:PLP:O4A	2.41	0.48

Continued on next page...

Continued from previous page...

Atom-1	Atom-2	Interatomic distance (Å)	Clash overlap (Å)
1:B:303:GLU:OE1	1:B:303:GLU:HA	2.14	0.47
1:A:346:HIS:O	1:A:348:PHE:N	2.46	0.46
1:A:287:MET:CE	1:A:330:TYR:CD1	2.99	0.46
1:B:271:ARG:NH2	1:B:349:GLU:OE1	2.40	0.44
1:A:309:LEU:HD22	1:A:309:LEU:O	2.17	0.44
1:B:287:MET:CE	1:B:330:TYR:CD1	3.00	0.43
1:A:76:GLN:O	1:A:77:PHE:C	2.55	0.43
1:A:179:SER:HB3	1:A:203:ILE:HG21	2.00	0.43
1:B:309:LEU:HD13	1:B:314:ILE:CD1	2.49	0.43
1:A:274:ILE:HG12	1:A:348:PHE:HD2	1.83	0.43
1:A:348:PHE:O	1:A:348:PHE:CG	2.72	0.42
1:A:287:MET:HE1	1:A:330:TYR:HD1	1.85	0.42
1:A:38:HIS:O	1:A:226:MET:HE1	2.21	0.41
1:B:188:ASN:O	1:B:190:GLY:N	2.46	0.41
1:B:287:MET:HE1	1:B:330:TYR:HD1	1.85	0.41
1:A:43:TRP:HD1	1:A:226:MET:HE1	1.85	0.40
1:B:145:ILE:HG23	1:B:319:HIS:HB3	2.03	0.40
1:A:46:VAL:O	1:A:47:MET:C	2.58	0.40

There are no symmetry-related clashes.

5.3 Torsion angles [i](#)

5.3.1 Protein backbone [i](#)

In the following table, the Percentiles column shows the percent Ramachandran outliers of the chain as a percentile score with respect to all X-ray entries followed by that with respect to entries of similar resolution.

The Analysed column shows the number of residues for which the backbone conformation was analysed, and the total number of residues.

Mol	Chain	Analysed	Favoured	Allowed	Outliers	Percentiles	
1	A	347/354 (98%)	333 (96%)	13 (4%)	1 (0%)	41	47
1	B	344/354 (97%)	329 (96%)	14 (4%)	1 (0%)	41	47
All	All	691/708 (98%)	662 (96%)	27 (4%)	2 (0%)	41	47

All (2) Ramachandran outliers are listed below:

Mol	Chain	Res	Type
1	A	188	ASN
1	B	189	CYS

5.3.2 Protein sidechains [i](#)

In the following table, the Percentiles column shows the percent sidechain outliers of the chain as a percentile score with respect to all X-ray entries followed by that with respect to entries of similar resolution.

The Analysed column shows the number of residues for which the sidechain conformation was analysed, and the total number of residues.

Mol	Chain	Analysed	Rotameric	Outliers	Percentiles	
1	A	304/309 (98%)	290 (95%)	14 (5%)	27	32
1	B	301/309 (97%)	296 (98%)	5 (2%)	60	72
All	All	605/618 (98%)	586 (97%)	19 (3%)	40	48

All (19) residues with a non-rotameric sidechain are listed below:

Mol	Chain	Res	Type
1	A	103	LYS
1	A	121	ASN
1	A	132	SER
1	A	189	CYS
1	A	209	ARG
1	A	278	THR
1	A	286	ILE
1	A	309	LEU
1	A	310	GLN
1	A	314	ILE
1	A	334	THR
1	A	348	PHE
1	A	349	GLU
1	A	351	LEU
1	B	9	PHE
1	B	29	GLU
1	B	132	SER
1	B	248	ILE
1	B	278	THR

Sometimes sidechains can be flipped to improve hydrogen bonding and reduce clashes. All (6) such sidechains are listed below:

Mol	Chain	Res	Type
1	A	25	ASN
1	A	45	ASN
1	A	142	ASN
1	A	288	ASN
1	B	142	ASN
1	B	288	ASN

5.3.3 RNA [i](#)

There are no RNA molecules in this entry.

5.4 Non-standard residues in protein, DNA, RNA chains [i](#)

There are no non-standard protein/DNA/RNA residues in this entry.

5.5 Carbohydrates [i](#)

There are no monosaccharides in this entry.

5.6 Ligand geometry [i](#)

Of 4 ligands modelled in this entry, 2 are monoatomic - leaving 2 for Mogul analysis.

In the following table, the Counts columns list the number of bonds (or angles) for which Mogul statistics could be retrieved, the number of bonds (or angles) that are observed in the model and the number of bonds (or angles) that are defined in the Chemical Component Dictionary. The Link column lists molecule types, if any, to which the group is linked. The Z score for a bond length (or angle) is the number of standard deviations the observed value is removed from the expected value. A bond length (or angle) with $|Z| > 2$ is considered an outlier worth inspection. RMSZ is the root-mean-square of all Z scores of the bond lengths (or angles).

Mol	Type	Chain	Res	Link	Bond lengths			Bond angles		
					Counts	RMSZ	$\# Z > 2$	Counts	RMSZ	$\# Z > 2$
3	PLP	A	402	-	16,16,16	2.34	3 (18%)	20,23,23	2.52	6 (30%)
3	PLP	B	402	-	16,16,16	2.95	3 (18%)	20,23,23	1.99	6 (30%)

In the following table, the Chirals column lists the number of chiral outliers, the number of chiral centers analysed, the number of these observed in the model and the number defined in the Chemical Component Dictionary. Similar counts are reported in the Torsion and Rings columns. '-' means no outliers of that kind were identified.

Mol	Type	Chain	Res	Link	Chirals	Torsions	Rings
3	PLP	A	402	-	-	0/8/8/8	0/1/1/1
3	PLP	B	402	-	-	3/8/8/8	0/1/1/1

All (6) bond length outliers are listed below:

Mol	Chain	Res	Type	Atoms	Z	Observed(Å)	Ideal(Å)
3	B	402	PLP	C3-C2	9.08	1.50	1.40
3	A	402	PLP	C3-C2	6.62	1.47	1.40
3	B	402	PLP	C4-C3	5.61	1.49	1.40
3	B	402	PLP	C4-C5	4.44	1.47	1.42
3	A	402	PLP	C4-C5	4.29	1.47	1.42
3	A	402	PLP	C4-C3	4.04	1.46	1.40

All (12) bond angle outliers are listed below:

Mol	Chain	Res	Type	Atoms	Z	Observed(°)	Ideal(°)
3	A	402	PLP	C4-C3-C2	-6.53	116.15	120.19
3	B	402	PLP	O3P-P-O4P	-4.84	93.84	106.73
3	A	402	PLP	O4A-C4A-C4	-4.39	115.34	124.91
3	A	402	PLP	O4P-P-O1P	-4.06	95.09	106.47
3	B	402	PLP	C4-C3-C2	-3.79	117.84	120.19
3	A	402	PLP	O3P-P-O1P	3.77	125.43	110.68
3	A	402	PLP	O3-C3-C2	3.32	124.72	117.49
3	B	402	PLP	C3-C4-C4A	2.99	124.13	119.90
3	A	402	PLP	C6-N1-C2	2.95	124.64	119.17
3	B	402	PLP	O3P-P-O2P	2.84	118.48	107.64
3	B	402	PLP	C3-C4-C5	-2.78	116.12	118.26
3	B	402	PLP	O4A-C4A-C4	-2.29	119.91	124.91

There are no chirality outliers.

All (3) torsion outliers are listed below:

Mol	Chain	Res	Type	Atoms
3	B	402	PLP	C5A-O4P-P-O1P
3	B	402	PLP	C5A-O4P-P-O3P
3	B	402	PLP	C5A-O4P-P-O2P

There are no ring outliers.

2 monomers are involved in 2 short contacts:

Mol	Chain	Res	Type	Clashes	Symm-Clashes
3	A	402	PLP	1	0
3	B	402	PLP	1	0

5.7 Other polymers [i](#)

There are no such residues in this entry.

5.8 Polymer linkage issues [i](#)

There are no chain breaks in this entry.

6 Fit of model and data [i](#)

6.1 Protein, DNA and RNA chains [i](#)

In the following table, the column labelled ‘#RSRZ > 2’ contains the number (and percentage) of RSRZ outliers, followed by percent RSRZ outliers for the chain as percentile scores relative to all X-ray entries and entries of similar resolution. The OWAB column contains the minimum, median, 95th percentile and maximum values of the occupancy-weighted average B-factor per residue. The column labelled ‘Q < 0.9’ lists the number of (and percentage) of residues with an average occupancy less than 0.9.

Mol	Chain	Analysed	<RSRZ>	#RSRZ>2	OWAB(Å ²)	Q<0.9
1	A	349/354 (98%)	0.01	2 (0%) 89 93	37, 58, 91, 122	0
1	B	346/354 (97%)	0.05	11 (3%) 47 59	42, 64, 97, 152	0
All	All	695/708 (98%)	0.03	13 (1%) 66 76	37, 62, 92, 152	0

All (13) RSRZ outliers are listed below:

Mol	Chain	Res	Type	RSRZ
1	B	315	GLY	3.7
1	B	322	VAL	3.6
1	B	309	LEU	3.4
1	B	10	GLY	3.2
1	A	153	ASP	3.0
1	B	265	LEU	3.0
1	B	262	ALA	2.9
1	B	188	ASN	2.3
1	B	321	SER	2.2
1	B	186	GLN	2.0
1	B	153	ASP	2.0
1	B	299	GLN	2.0
1	A	185	ALA	2.0

6.2 Non-standard residues in protein, DNA, RNA chains [i](#)

There are no non-standard protein/DNA/RNA residues in this entry.

6.3 Carbohydrates [i](#)

There are no monosaccharides in this entry.

6.4 Ligands [i](#)

In the following table, the Atoms column lists the number of modelled atoms in the group and the number defined in the chemical component dictionary. The B-factors column lists the minimum, median, 95th percentile and maximum values of B factors of atoms in the group. The column labelled 'Q < 0.9' lists the number of atoms with occupancy less than 0.9.

Mol	Type	Chain	Res	Atoms	RSCC	RSR	B-factors(Å ²)	Q<0.9
3	PLP	B	402	16/16	0.95	0.13	50,69,80,87	0
3	PLP	A	402	16/16	0.96	0.13	45,54,65,69	0
2	CL	A	401	1/1	0.98	0.10	49,49,49,49	0
2	CL	B	401	1/1	0.98	0.16	53,53,53,53	0

6.5 Other polymers [i](#)

There are no such residues in this entry.