



# Full wwPDB X-ray Structure Validation Report ⓘ

Dec 16, 2023 – 11:17 am GMT

PDB ID : 2YCA  
Title : Mixed-function P450 MycG in complex with mycinamicin III in P21212 space group  
Authors : Li, S.; Kells, P.M.; Sherman, D.H.; Podust, L.M.  
Deposited on : 2011-03-12  
Resolution : 1.80 Å(reported)

This is a Full wwPDB X-ray Structure Validation Report for a publicly released PDB entry.

We welcome your comments at [validation@mail.wwpdb.org](mailto:validation@mail.wwpdb.org)

A user guide is available at

<https://www.wwpdb.org/validation/2017/XrayValidationReportHelp>

with specific help available everywhere you see the ⓘ symbol.

The types of validation reports are described at

<http://www.wwpdb.org/validation/2017/FAQs#types>.

---

The following versions of software and data (see [references ⓘ](#)) were used in the production of this report:

MolProbity : 4.02b-467  
Mogul : 1.8.4, CSD as541be (2020)  
Xtriage (Phenix) : 1.13  
EDS : 2.36  
buster-report : 1.1.7 (2018)  
Percentile statistics : 20191225.v01 (using entries in the PDB archive December 25th 2019)  
Refmac : 5.8.0158  
CCP4 : 7.0.044 (Gargrove)  
Ideal geometry (proteins) : Engh & Huber (2001)  
Ideal geometry (DNA, RNA) : Parkinson et al. (1996)  
Validation Pipeline (wwPDB-VP) : 2.36

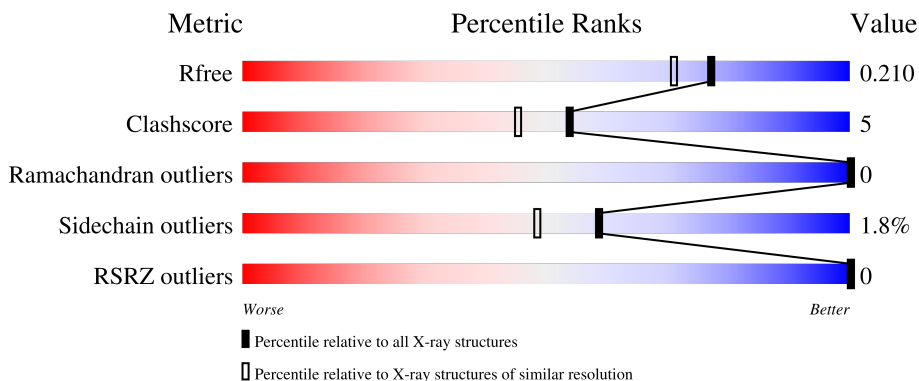
# 1 Overall quality at a glance

The following experimental techniques were used to determine the structure:

*X-RAY DIFFRACTION*


The reported resolution of this entry is 1.80 Å.

Percentile scores (ranging between 0-100) for global validation metrics of the entry are shown in the following graphic. The table shows the number of entries on which the scores are based.



Metric	Whole archive (#Entries)	Similar resolution (#Entries, resolution range(Å))
$R_{free}$	130704	5950 (1.80-1.80)
Clashscore	141614	6793 (1.80-1.80)
Ramachandran outliers	138981	6697 (1.80-1.80)
Sidechain outliers	138945	6696 (1.80-1.80)
RSRZ outliers	127900	5850 (1.80-1.80)

The table below summarises the geometric issues observed across the polymeric chains and their fit to the electron density. The red, orange, yellow and green segments of the lower bar indicate the fraction of residues that contain outliers for  $\geq 3$ , 2, 1 and 0 types of geometric quality criteria respectively. A grey segment represents the fraction of residues that are not modelled. The numeric value for each fraction is indicated below the corresponding segment, with a dot representing fractions  $\leq 5\%$ . The upper red bar (where present) indicates the fraction of residues that have poor fit to the electron density. The numeric value is given above the bar.

Mol	Chain	Length	Quality of chain
1	A	417	 81%      11%      • 6%

## 2 Entry composition

There are 6 unique types of molecules in this entry. The entry contains 3637 atoms, of which 0 are hydrogens and 0 are deuteriums.

In the tables below, the ZeroOcc column contains the number of atoms modelled with zero occupancy, the AltConf column contains the number of residues with at least one atom in alternate conformation and the Trace column contains the number of residues modelled with at most 2 atoms.

- Molecule 1 is a protein called P-450-LIKE PROTEIN.

Mol	Chain	Residues	Atoms					ZeroOcc	AltConf	Trace
			Total	C	N	O	S			
1	A	393	3192	1996	590	595	11	0	11	0

There are 20 discrepancies between the modelled and reference sequences:

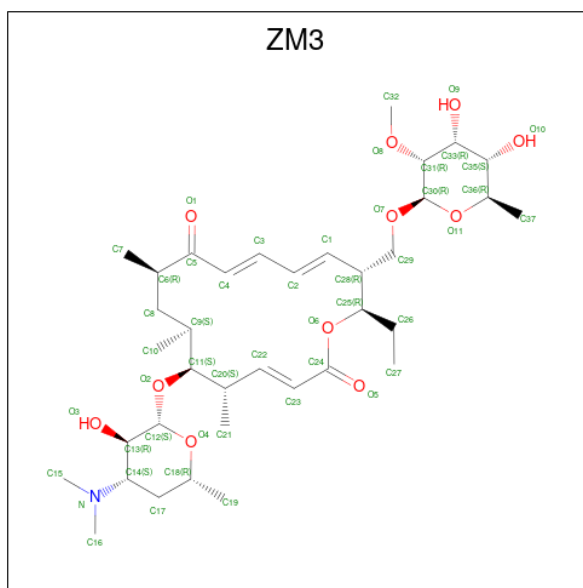
Chain	Residue	Modelled	Actual	Comment	Reference
A	-19	MET	-	expression tag	UNP Q59523
A	-18	GLY	-	expression tag	UNP Q59523
A	-17	SER	-	expression tag	UNP Q59523
A	-16	SER	-	expression tag	UNP Q59523
A	-15	HIS	-	expression tag	UNP Q59523
A	-14	HIS	-	expression tag	UNP Q59523
A	-13	HIS	-	expression tag	UNP Q59523
A	-12	HIS	-	expression tag	UNP Q59523
A	-11	HIS	-	expression tag	UNP Q59523
A	-10	HIS	-	expression tag	UNP Q59523
A	-9	SER	-	expression tag	UNP Q59523
A	-8	SER	-	expression tag	UNP Q59523
A	-7	GLY	-	expression tag	UNP Q59523
A	-6	LEU	-	expression tag	UNP Q59523
A	-5	VAL	-	expression tag	UNP Q59523
A	-4	PRO	-	expression tag	UNP Q59523
A	-3	ARG	-	expression tag	UNP Q59523
A	-2	GLY	-	expression tag	UNP Q59523
A	-1	SER	-	expression tag	UNP Q59523
A	0	HIS	-	expression tag	UNP Q59523

- Molecule 2 is PROTOPORPHYRIN IX CONTAINING FE (three-letter code: HEM) (formula: C<sub>34</sub>H<sub>32</sub>FeN<sub>4</sub>O<sub>4</sub>).



Mol	Chain	Residues	Atoms				ZeroOcc	AltConf	
			Total	C	Fe	N			O
2	A	1	43	34	1	4	4	0	0

- Molecule 3 is MYCINAMICIN III (three-letter code: ZM3) (formula:  $C_{36}H_{59}NO_{11}$ ).



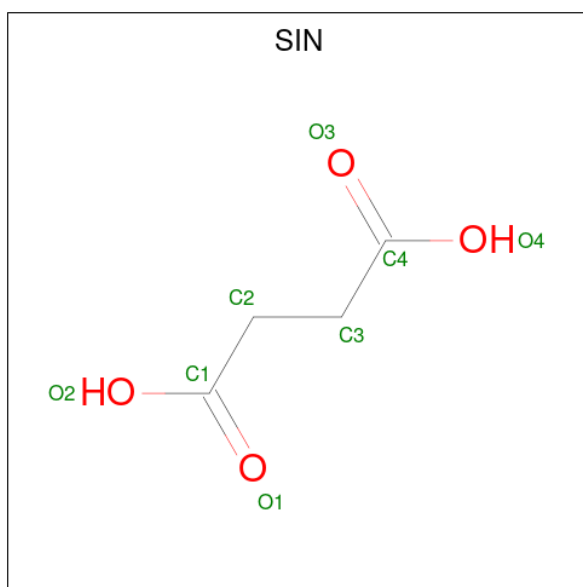
Mol	Chain	Residues	Atoms			ZeroOcc	AltConf	
			Total	C	N			O
3	A	1	48	36	1	11	0	0

- Molecule 4 is GLYCEROL (three-letter code: GOL) (formula:  $C_3H_8O_3$ ).



Mol	Chain	Residues	Atoms			ZeroOcc	AltConf
4	A	1	Total	C	O	0	0
			6	3	3		
4	A	1	Total	C	O	0	0
			6	3	3		
4	A	1	Total	C	O	0	0
			6	3	3		

- Molecule 5 is SUCCINIC ACID (three-letter code: SIN) (formula: C<sub>4</sub>H<sub>6</sub>O<sub>4</sub>).



Mol	Chain	Residues	Atoms			ZeroOcc	AltConf
5	A	1	Total	C	O	0	0
			8	4	4		


- Molecule 6 is water.

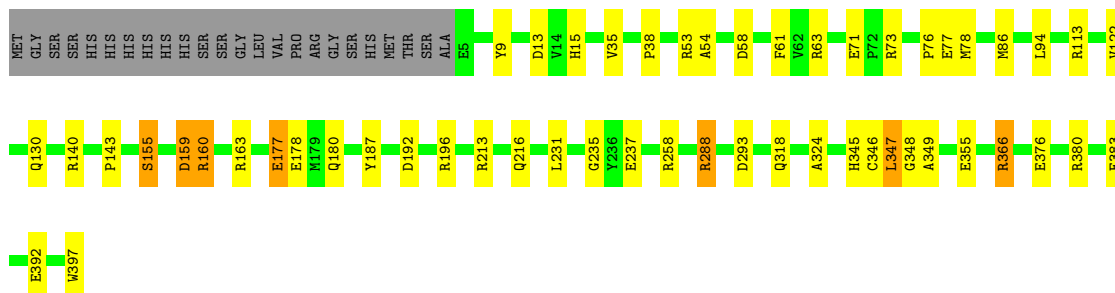
Mol	Chain	Residues	Atoms		ZeroOcc	AltConf
6	A	328	Total 328	O 328	0	0

### 3 Residue-property plots

These plots are drawn for all protein, RNA, DNA and oligosaccharide chains in the entry. The first graphic for a chain summarises the proportions of the various outlier classes displayed in the second graphic. The second graphic shows the sequence view annotated by issues in geometry and electron density. Residues are color-coded according to the number of geometric quality criteria for which they contain at least one outlier: green = 0, yellow = 1, orange = 2 and red = 3 or more. A red dot above a residue indicates a poor fit to the electron density ( $RSRZ > 2$ ). Stretches of 2 or more consecutive residues without any outlier are shown as a green connector. Residues present in the sample, but not in the model, are shown in grey.

- Molecule 1: P-450-LIKE PROTEIN

Chain A: 



## 4 Data and refinement statistics

Property	Value	Source
Space group	P 21 21 2	Depositor
Cell constants a, b, c, $\alpha$ , $\beta$ , $\gamma$	56.75Å 162.33Å 49.79Å 90.00° 90.00° 90.00°	Depositor
Resolution (Å)	162.33 – 1.80 49.79 – 1.80	Depositor EDS
% Data completeness (in resolution range)	99.7 (162.33-1.80) 99.8 (49.79-1.80)	Depositor EDS
$R_{merge}$	0.12	Depositor
$R_{sym}$	(Not available)	Depositor
$\langle I/\sigma(I) \rangle$ <sup>1</sup>	1.88 (at 1.79Å)	Xtrriage
Refinement program	REFMAC 5.5.0109	Depositor
R, $R_{free}$	0.152 , 0.210 0.154 , 0.210	Depositor DCC
$R_{free}$ test set	2187 reflections (5.02%)	wwPDB-VP
Wilson B-factor (Å <sup>2</sup> )	20.4	Xtrriage
Anisotropy	0.533	Xtrriage
Bulk solvent $k_{sol}$ (e/Å <sup>3</sup> ), $B_{sol}$ (Å <sup>2</sup> )	0.37 , 42.7	EDS
L-test for twinning <sup>2</sup>	$\langle  L  \rangle = 0.48$ , $\langle L^2 \rangle = 0.32$	Xtrriage
Estimated twinning fraction	No twinning to report.	Xtrriage
$F_o, F_c$ correlation	0.97	EDS
Total number of atoms	3637	wwPDB-VP
Average B, all atoms (Å <sup>2</sup> )	23.0	wwPDB-VP

Xtrriage's analysis on translational NCS is as follows: *The largest off-origin peak in the Patterson function is 5.69% of the height of the origin peak. No significant pseudotranslation is detected.*

<sup>1</sup>Intensities estimated from amplitudes.

<sup>2</sup>Theoretical values of  $\langle |L| \rangle$ ,  $\langle L^2 \rangle$  for acentric reflections are 0.5, 0.333 respectively for untwinned datasets, and 0.375, 0.2 for perfectly twinned datasets.



## 5 Model quality [i](#)

### 5.1 Standard geometry [i](#)

Bond lengths and bond angles in the following residue types are not validated in this section: GOL, SIN, HEM, ZM3

The Z score for a bond length (or angle) is the number of standard deviations the observed value is removed from the expected value. A bond length (or angle) with  $|Z| > 5$  is considered an outlier worth inspection. RMSZ is the root-mean-square of all Z scores of the bond lengths (or angles).

Mol	Chain	Bond lengths		Bond angles	
		RMSZ	# Z  >5	RMSZ	# Z  >5
1	A	1.13	2/3258 (0.1%)	0.96	10/4429 (0.2%)

All (2) bond length outliers are listed below:

Mol	Chain	Res	Type	Atoms	Z	Observed(Å)	Ideal(Å)
1	A	122	VAL	CB-CG2	5.16	1.63	1.52
1	A	187	TYR	CD1-CE1	5.01	1.46	1.39

All (10) bond angle outliers are listed below:

Mol	Chain	Res	Type	Atoms	Z	Observed(°)	Ideal(°)
1	A	13	ASP	CB-CG-OD1	8.49	125.94	118.30
1	A	63	ARG	NE-CZ-NH2	-7.12	116.74	120.30
1	A	293	ASP	CB-CG-OD1	6.50	124.15	118.30
1	A	13	ASP	CB-CG-OD2	-6.00	112.90	118.30
1	A	155	SER	N-CA-CB	-5.73	101.91	110.50
1	A	288	ARG	NE-CZ-NH2	-5.57	117.52	120.30
1	A	113	ARG	NE-CZ-NH1	5.14	122.87	120.30
1	A	159	ASP	CB-CG-OD1	5.13	122.92	118.30
1	A	213	ARG	NE-CZ-NH2	-5.13	117.73	120.30
1	A	366	ARG	NE-CZ-NH1	-5.08	117.76	120.30

There are no chirality outliers.

There are no planarity outliers.

### 5.2 Too-close contacts [i](#)

In the following table, the Non-H and H(model) columns list the number of non-hydrogen atoms and hydrogen atoms in the chain respectively. The H(added) column lists the number of hydrogen

atoms added and optimized by MolProbity. The Clashes column lists the number of clashes within the asymmetric unit, whereas Symm-Clashes lists symmetry-related clashes.

Mol	Chain	Non-H	H(model)	H(added)	Clashes	Symm-Clashes
1	A	3192	0	3159	32	0
2	A	43	0	30	3	0
3	A	48	0	59	3	0
4	A	18	0	24	1	0
5	A	8	0	4	1	0
6	A	328	0	0	6	0
All	All	3637	0	3276	35	0

The all-atom clashscore is defined as the number of clashes found per 1000 atoms (including hydrogen atoms). The all-atom clashscore for this structure is 5.

All (35) close contacts within the same asymmetric unit are listed below, sorted by their clash magnitude.

Atom-1	Atom-2	Interatomic distance (Å)	Clash overlap (Å)
1:A:73:ARG:HA	4:A:1399:GOL:H11	1.59	0.84
1:A:376:GLU:CG	6:A:2034:HOH:O	2.26	0.83
1:A:163[B]:ARG:HG2	6:A:2154:HOH:O	1.86	0.75
1:A:366:ARG:HH21	5:A:1401:SIN:H31	1.50	0.74
1:A:15:HIS:HE1	1:A:383:GLU:OE2	1.70	0.73
1:A:76:PRO:HD2	1:A:77:GLU:OE2	1.95	0.67
1:A:192[A]:ASP:OD2	1:A:196:ARG:NH1	2.29	0.65
1:A:380[A]:ARG:HH12	1:A:392:GLU:CD	2.08	0.56
3:A:460:ZM3:H7B	6:A:2199:HOH:O	2.07	0.54
1:A:9:TYR:HB2	1:A:35:VAL:HB	1.92	0.52
1:A:348:GLY:HA3	2:A:450:HEM:C3C	2.45	0.52
1:A:216[B]:GLN:OE1	6:A:2184:HOH:O	2.18	0.52
1:A:231:LEU:HD21	1:A:347:LEU:HD11	1.93	0.51
1:A:159:ASP:O	1:A:163[B]:ARG:HG3	2.11	0.51
1:A:318:GLN:NE2	1:A:324:ALA:H	2.09	0.50
1:A:9:TYR:O	1:A:38:PRO:HD3	2.12	0.50
1:A:237:GLU:HB3	3:A:460:ZM3:C7	2.41	0.50
1:A:143:PRO:HA	1:A:355:GLU:OE1	2.12	0.48
2:A:450:HEM:HMC2	2:A:450:HEM:HBC2	1.96	0.47
1:A:177:GLU:HA	1:A:180:GLN:HB2	1.96	0.47
3:A:460:ZM3:O7	3:A:460:ZM3:H32B	2.15	0.47
1:A:71:GLU:H	1:A:78:MET:HE1	1.79	0.46
1:A:231:LEU:CD2	1:A:347:LEU:HD11	2.47	0.45
1:A:86:MET:SD	1:A:94:LEU:HD12	2.57	0.45
1:A:160:ARG:HA	1:A:163[B]:ARG:HG3	2.00	0.44

*Continued on next page...*

Continued from previous page...

Atom-1	Atom-2	Interatomic distance (Å)	Clash overlap (Å)
1:A:61:PHE:HB3	1:A:288:ARG:HB3	2.00	0.43
1:A:54:ALA:O	1:A:58:ASP:HB2	2.19	0.43
1:A:140:ARG:HD2	6:A:2144:HOH:O	2.19	0.42
1:A:130:GLN:NE2	1:A:397:TRP:H	2.17	0.42
1:A:346:CYS:HB3	1:A:349:ALA:HB2	2.01	0.42
1:A:177:GLU:HG3	1:A:178:GLU:N	2.35	0.41
1:A:235:GLY:HA2	2:A:450:HEM:C2C	2.56	0.41
1:A:345[A]:HIS:CD2	1:A:345[A]:HIS:C	2.93	0.41
1:A:15:HIS:CE1	1:A:383:GLU:OE2	2.61	0.40
1:A:216[B]:GLN:NE2	6:A:2183:HOH:O	2.55	0.40

There are no symmetry-related clashes.

## 5.3 Torsion angles [i](#)

### 5.3.1 Protein backbone [i](#)

In the following table, the Percentiles column shows the percent Ramachandran outliers of the chain as a percentile score with respect to all X-ray entries followed by that with respect to entries of similar resolution.

The Analysed column shows the number of residues for which the backbone conformation was analysed, and the total number of residues.

Mol	Chain	Analysed	Favoured	Allowed	Outliers	Percentiles
1	A	402/417 (96%)	389 (97%)	13 (3%)	0	<a href="#">100</a> <a href="#">100</a>

There are no Ramachandran outliers to report.

### 5.3.2 Protein sidechains [i](#)

In the following table, the Percentiles column shows the percent sidechain outliers of the chain as a percentile score with respect to all X-ray entries followed by that with respect to entries of similar resolution.

The Analysed column shows the number of residues for which the sidechain conformation was analysed, and the total number of residues.

Mol	Chain	Analysed	Rotameric	Outliers	Percentiles
1	A	336/346 (97%)	330 (98%)	6 (2%)	<a href="#">59</a> <a href="#">48</a>

All (6) residues with a non-rotameric sidechain are listed below:

Mol	Chain	Res	Type
1	A	53	ARG
1	A	155	SER
1	A	160	ARG
1	A	177	GLU
1	A	258	ARG
1	A	347	LEU

Sometimes sidechains can be flipped to improve hydrogen bonding and reduce clashes. All (6) such sidechains are listed below:

Mol	Chain	Res	Type
1	A	15	HIS
1	A	130	GLN
1	A	185	GLN
1	A	318	GLN
1	A	320	GLN
1	A	335	GLN

### 5.3.3 RNA [i](#)

There are no RNA molecules in this entry.

## 5.4 Non-standard residues in protein, DNA, RNA chains [i](#)

There are no non-standard protein/DNA/RNA residues in this entry.

## 5.5 Carbohydrates [i](#)

There are no monosaccharides in this entry.

## 5.6 Ligand geometry [i](#)

6 ligands are modelled in this entry.

In the following table, the Counts columns list the number of bonds (or angles) for which Mogul statistics could be retrieved, the number of bonds (or angles) that are observed in the model and the number of bonds (or angles) that are defined in the Chemical Component Dictionary. The Link column lists molecule types, if any, to which the group is linked. The Z score for a bond length (or angle) is the number of standard deviations the observed value is removed from the

expected value. A bond length (or angle) with  $|Z| > 2$  is considered an outlier worth inspection. RMSZ is the root-mean-square of all Z scores of the bond lengths (or angles).

Mol	Type	Chain	Res	Link	Bond lengths			Bond angles		
					Counts	RMSZ	# Z  > 2	Counts	RMSZ	# Z  > 2
4	GOL	A	1399	-	5,5,5	0.62	0	5,5,5	1.41	1 (20%)
3	ZM3	A	460	-	50,50,50	1.11	2 (4%)	61,70,70	1.51	14 (22%)
5	SIN	A	1401	-	7,7,7	1.07	0	8,8,8	3.17	2 (25%)
4	GOL	A	1400	-	5,5,5	0.75	0	5,5,5	1.47	1 (20%)
4	GOL	A	1398	-	5,5,5	0.68	0	5,5,5	0.92	0
2	HEM	A	450	6,1	41,50,50	1.89	8 (19%)	45,82,82	1.94	13 (28%)

In the following table, the Chirals column lists the number of chiral outliers, the number of chiral centers analysed, the number of these observed in the model and the number defined in the Chemical Component Dictionary. Similar counts are reported in the Torsion and Rings columns. '-' means no outliers of that kind were identified.

Mol	Type	Chain	Res	Link	Chirals	Torsions	Rings
4	GOL	A	1399	-	-	2/4/4/4	-
3	ZM3	A	460	-	-	3/53/89/89	0/2/3/3
5	SIN	A	1401	-	-	5/5/5/5	-
4	GOL	A	1400	-	-	0/4/4/4	-
4	GOL	A	1398	-	-	2/4/4/4	-
2	HEM	A	450	6,1	-	0/12/54/54	-

All (10) bond length outliers are listed below:

Mol	Chain	Res	Type	Atoms	Z	Observed(Å)	Ideal(Å)
2	A	450	HEM	C3D-C2D	6.60	1.50	1.36
3	A	460	ZM3	O6-C24	5.28	1.45	1.34
2	A	450	HEM	C3C-CAC	4.86	1.57	1.47
2	A	450	HEM	CMB-C2B	3.11	1.57	1.50
2	A	450	HEM	CAA-C2A	2.72	1.56	1.52
2	A	450	HEM	C3C-C2C	-2.63	1.36	1.40
2	A	450	HEM	CMC-C2C	2.54	1.57	1.51
2	A	450	HEM	CAB-C3B	2.28	1.53	1.47
3	A	460	ZM3	O6-C25	-2.20	1.42	1.46
2	A	450	HEM	CMA-C3A	2.18	1.56	1.51

All (31) bond angle outliers are listed below:

Mol	Chain	Res	Type	Atoms	Z	Observed(°)	Ideal(°)
5	A	1401	SIN	C3-C2-C1	-6.13	100.42	113.60
5	A	1401	SIN	C2-C3-C4	-5.92	100.86	113.60
2	A	450	HEM	C4D-ND-C1D	5.47	110.73	105.07
2	A	450	HEM	CMC-C2C-C3C	4.09	132.33	124.68
3	A	460	ZM3	C20-C22-C23	-3.36	117.28	126.44
2	A	450	HEM	C4C-CHD-C1D	3.27	126.87	122.56
3	A	460	ZM3	C15-N-C14	3.24	122.85	113.11
2	A	450	HEM	C4B-C3B-C2B	3.23	109.68	107.11
2	A	450	HEM	CMD-C2D-C1D	3.22	129.95	125.04
2	A	450	HEM	CMA-C3A-C4A	-3.20	123.54	128.46
2	A	450	HEM	C1B-NB-C4B	3.04	108.22	105.07
2	A	450	HEM	CBD-CAD-C3D	-2.96	104.42	112.63
3	A	460	ZM3	C18-C17-C14	-2.87	105.43	110.46
2	A	450	HEM	CHD-C1D-ND	2.80	127.47	124.43
3	A	460	ZM3	C10-C9-C8	2.80	114.88	110.69
3	A	460	ZM3	C33-C35-C36	2.54	113.73	109.77
3	A	460	ZM3	C2-C3-C4	-2.54	118.34	124.67
4	A	1400	GOL	C3-C2-C1	-2.51	101.93	111.70
3	A	460	ZM3	O2-C11-C20	-2.50	105.71	110.89
3	A	460	ZM3	C21-C20-C22	-2.49	103.96	109.99
3	A	460	ZM3	C28-C1-C2	-2.48	119.18	125.45
2	A	450	HEM	CHB-C1B-NB	2.46	127.42	124.38
4	A	1399	GOL	C3-C2-C1	-2.26	102.91	111.70
3	A	460	ZM3	O8-C31-C33	-2.21	105.00	110.29
2	A	450	HEM	CBA-CAA-C2A	-2.15	108.96	112.62
2	A	450	HEM	C4B-CHC-C1C	2.13	125.37	122.56
3	A	460	ZM3	O1-C5-C6	-2.11	117.33	121.25
3	A	460	ZM3	C12-O4-C18	2.07	116.19	112.91
3	A	460	ZM3	C35-C33-C31	2.04	114.34	109.68
2	A	450	HEM	O2D-CGD-CBD	2.01	120.50	114.03
3	A	460	ZM3	C16-N-C15	2.00	116.28	110.38

There are no chirality outliers.

All (12) torsion outliers are listed below:

Mol	Chain	Res	Type	Atoms
5	A	1401	SIN	C1-C2-C3-C4
4	A	1399	GOL	O1-C1-C2-C3
3	A	460	ZM3	O11-C30-O7-C29
4	A	1399	GOL	O1-C1-C2-O2
3	A	460	ZM3	C17-C14-N-C16
5	A	1401	SIN	C2-C3-C4-O4
5	A	1401	SIN	C2-C3-C4-O3

*Continued on next page...*

*Continued from previous page...*

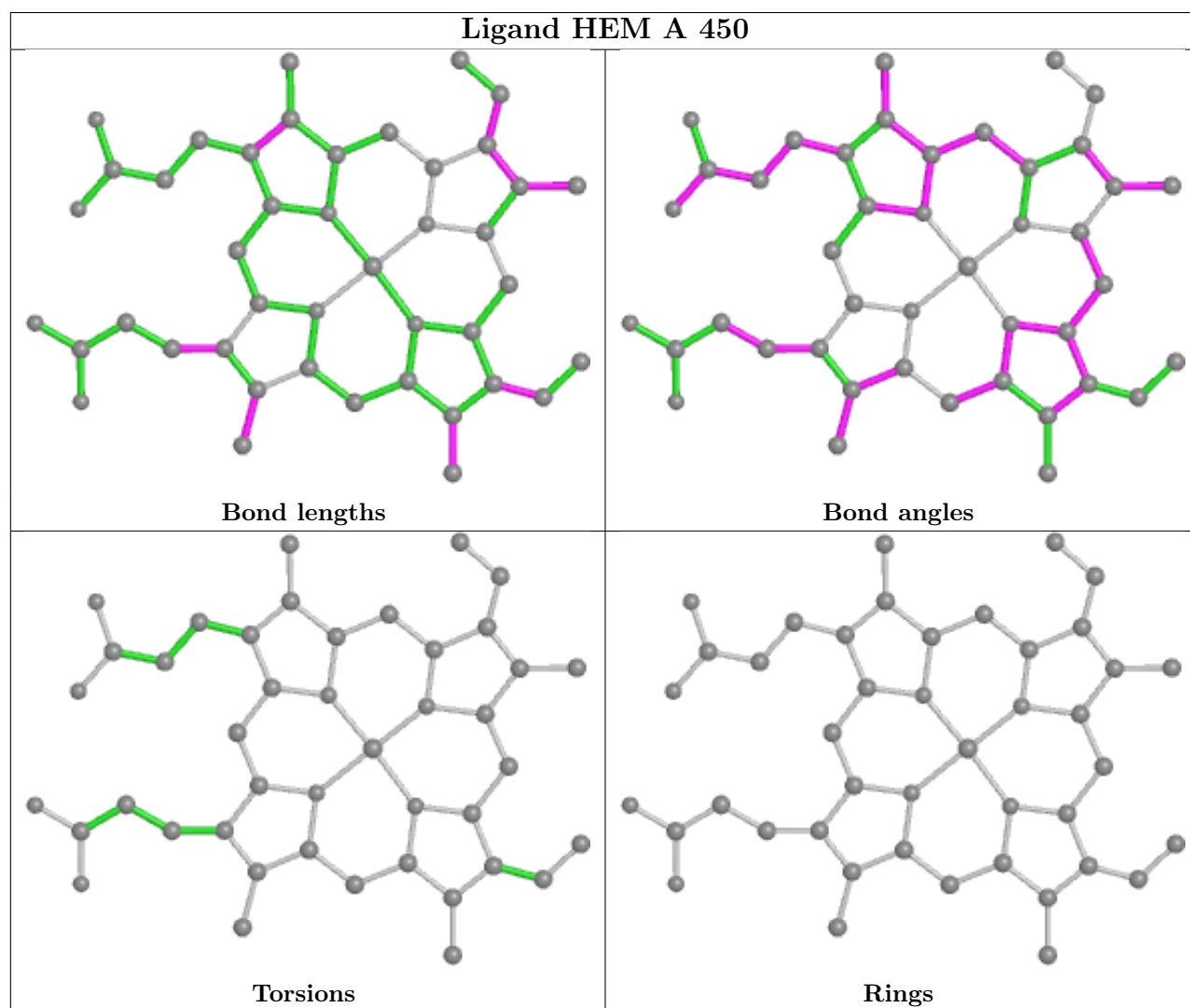
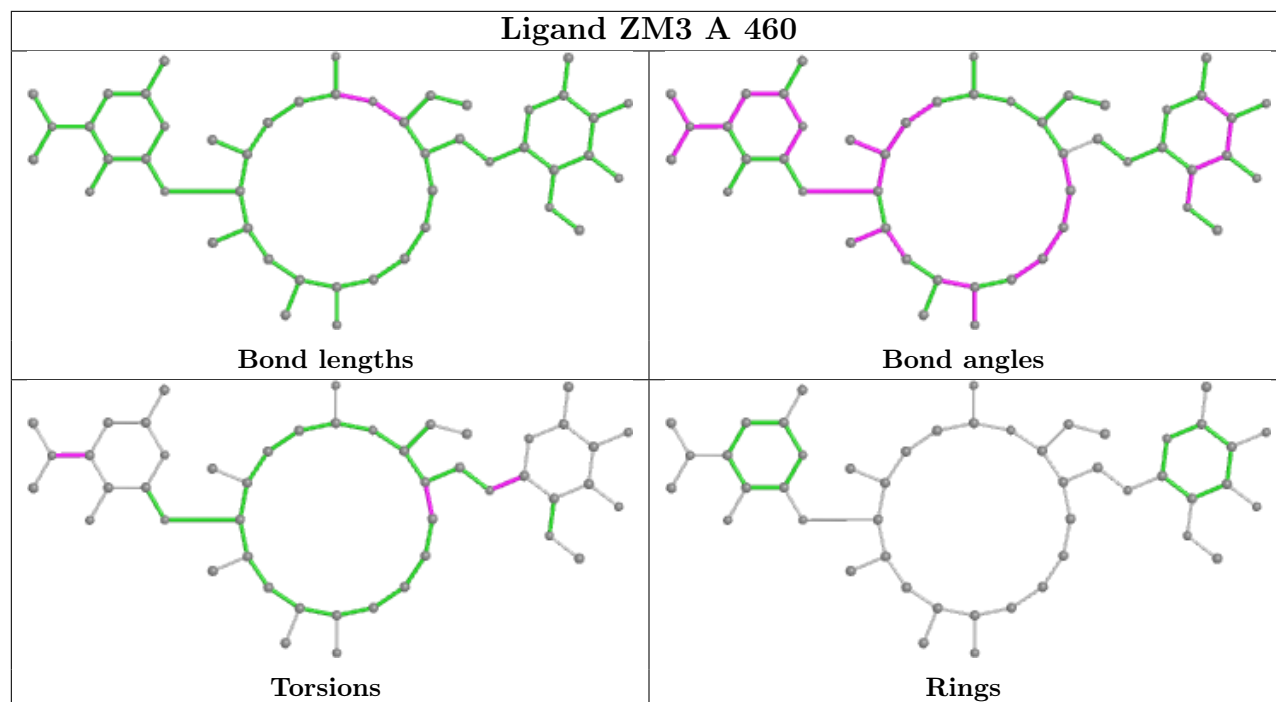
Mol	Chain	Res	Type	Atoms
4	A	1398	GOL	O2-C2-C3-O3
5	A	1401	SIN	O2-C1-C2-C3
5	A	1401	SIN	O1-C1-C2-C3
3	A	460	ZM3	C2-C1-C28-C29
4	A	1398	GOL	C1-C2-C3-O3

There are no ring outliers.

4 monomers are involved in 8 short contacts:

Mol	Chain	Res	Type	Clashes	Symm-Clashes
4	A	1399	GOL	1	0
3	A	460	ZM3	3	0
5	A	1401	SIN	1	0
2	A	450	HEM	3	0

The following is a two-dimensional graphical depiction of Mogul quality analysis of bond lengths, bond angles, torsion angles, and ring geometry for all instances of the Ligand of Interest. In addition, ligands with molecular weight > 250 and outliers as shown on the validation Tables will also be included. For torsion angles, if less than 5% of the Mogul distribution of torsion angles is within 10 degrees of the torsion angle in question, then that torsion angle is considered an outlier. Any bond that is central to one or more torsion angles identified as an outlier by Mogul will be highlighted in the graph. For rings, the root-mean-square deviation (RMSD) between the ring in question and similar rings identified by Mogul is calculated over all ring torsion angles. If the average RMSD is greater than 60 degrees and the minimal RMSD between the ring in question and any Mogul-identified rings is also greater than 60 degrees, then that ring is considered an outlier. The outliers are highlighted in purple. The color gray indicates Mogul did not find sufficient equivalents in the CSD to analyse the geometry.





## 5.7 Other polymers [i](#)

There are no such residues in this entry.

## 5.8 Polymer linkage issues [i](#)

There are no chain breaks in this entry.

## 6 Fit of model and data [i](#)

### 6.1 Protein, DNA and RNA chains [i](#)

In the following table, the column labelled ‘#RSRZ> 2’ contains the number (and percentage) of RSRZ outliers, followed by percent RSRZ outliers for the chain as percentile scores relative to all X-ray entries and entries of similar resolution. The OWAB column contains the minimum, median, 95<sup>th</sup> percentile and maximum values of the occupancy-weighted average B-factor per residue. The column labelled ‘Q< 0.9’ lists the number of (and percentage) of residues with an average occupancy less than 0.9.

Mol	Chain	Analysed	<RSRZ>	#RSRZ>2	OWAB(Å <sup>2</sup> )	Q<0.9
1	A	393/417 (94%)	-0.57	0 <b>100</b> <b>100</b>	12, 20, 33, 49	0

There are no RSRZ outliers to report.

### 6.2 Non-standard residues in protein, DNA, RNA chains [i](#)

There are no non-standard protein/DNA/RNA residues in this entry.

### 6.3 Carbohydrates [i](#)

There are no monosaccharides in this entry.

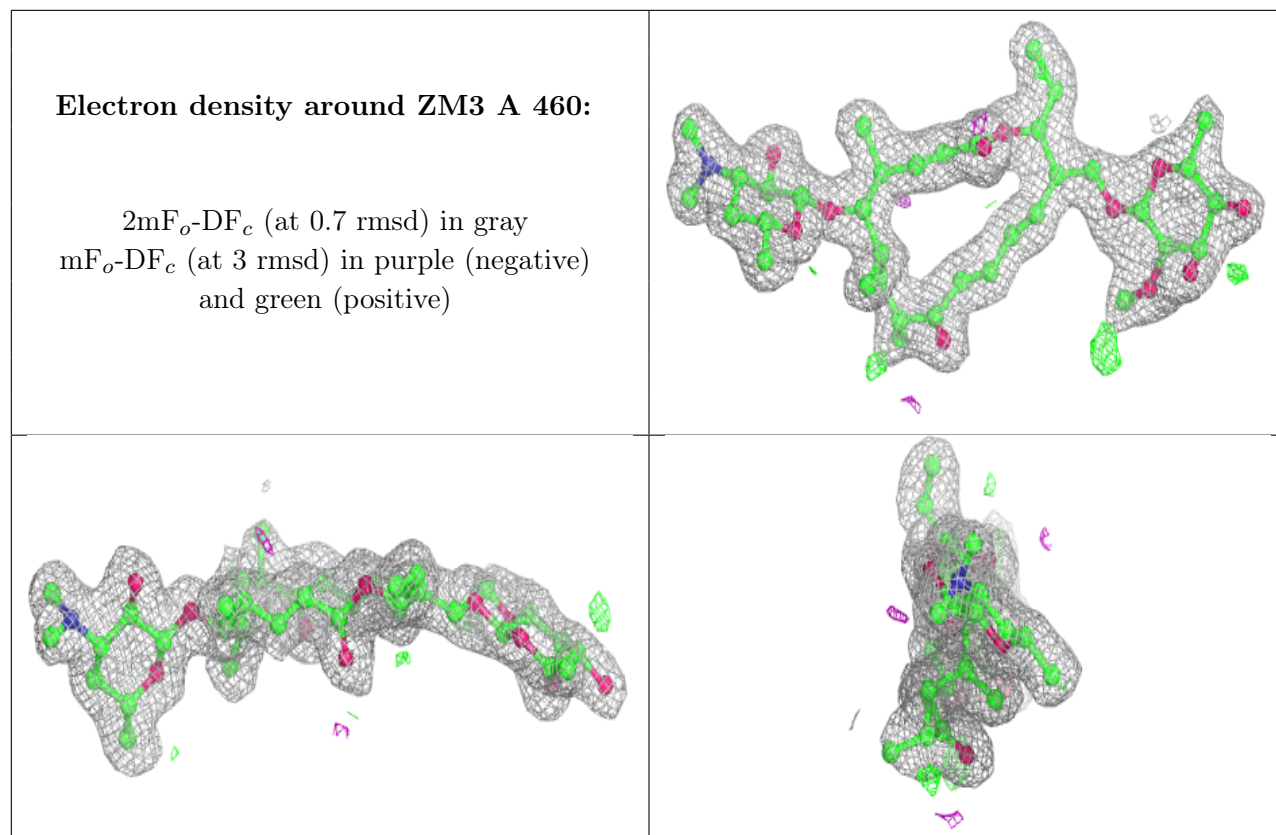
### 6.4 Ligands [i](#)

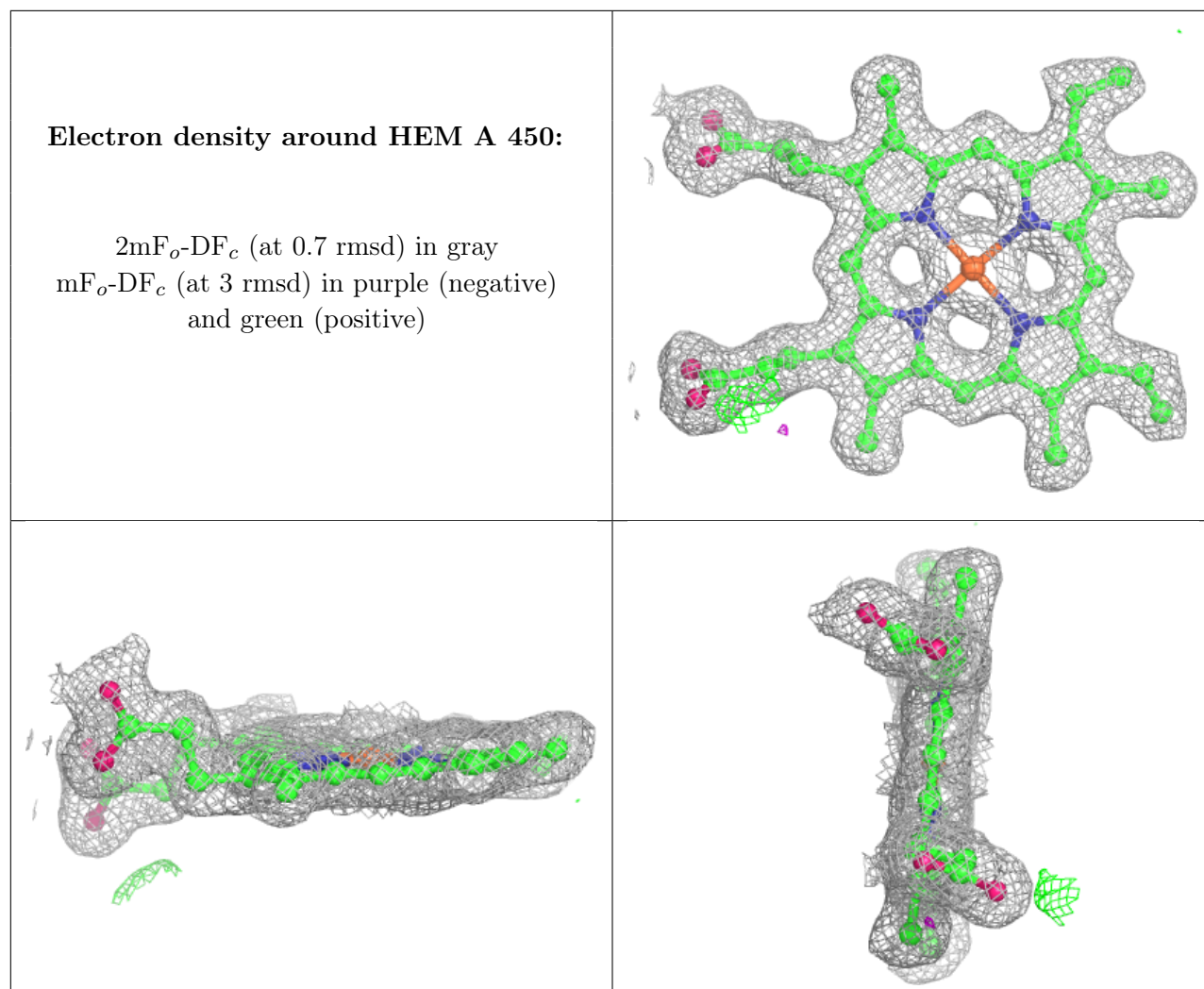
In the following table, the Atoms column lists the number of modelled atoms in the group and the number defined in the chemical component dictionary. The B-factors column lists the minimum, median, 95<sup>th</sup> percentile and maximum values of B factors of atoms in the group. The column labelled ‘Q< 0.9’ lists the number of atoms with occupancy less than 0.9.

Mol	Type	Chain	Res	Atoms	RSCC	RSR	B-factors(Å <sup>2</sup> )	Q<0.9
5	SIN	A	1401	8/8	0.79	0.24	50,51,57,58	0
4	GOL	A	1399	6/6	0.91	0.12	24,29,30,32	0
3	ZM3	A	460	48/48	0.96	0.09	14,21,42,43	0
4	GOL	A	1400	6/6	0.98	0.08	20,20,22,24	0
4	GOL	A	1398	6/6	0.98	0.08	20,21,21,24	0
2	HEM	A	450	43/43	0.99	0.07	12,14,17,22	0

The following is a graphical depiction of the model fit to experimental electron density of all instances of the Ligand of Interest. In addition, ligands with molecular weight > 250 and outliers as shown on the geometry validation Tables will also be included. Each fit is shown from different

orientation to approximate a three-dimensional view.





## 6.5 Other polymers [\(i\)](#)

There are no such residues in this entry.