



Full wwPDB X-ray Structure Validation Report ⓘ

Oct 17, 2023 – 07:36 PM EDT

PDB ID : 1XXJ
Title : Urate oxidase from aspergillus flavus complexed with 5-amino 6-nitro uracil
Authors : Retailleau, P.; Colloc'h, N.; Vivares, D.; Bonnete, F.; Castro, B.; El Hajji, M.; Prange, T.
Deposited on : 2004-11-05
Resolution : 2.80 Å(reported)

This is a Full wwPDB X-ray Structure Validation Report for a publicly released PDB entry.

We welcome your comments at validation@mail.wwpdb.org

A user guide is available at

<https://www.wwpdb.org/validation/2017/XrayValidationReportHelp>

with specific help available everywhere you see the ⓘ symbol.

The types of validation reports are described at

<http://www.wwpdb.org/validation/2017/FAQs#types>.

The following versions of software and data (see [references ⓘ](#)) were used in the production of this report:

MolProbity : 4.02b-467
Mogul : 1.8.5 (274361), CSD as541be (2020)
Xtriage (Phenix) : 1.13
EDS : 2.36
Percentile statistics : 20191225.v01 (using entries in the PDB archive December 25th 2019)
Refmac : 5.8.0158
CCP4 : 7.0.044 (Gargrove)
Ideal geometry (proteins) : Engh & Huber (2001)
Ideal geometry (DNA, RNA) : Parkinson et al. (1996)
Validation Pipeline (wwPDB-VP) : 2.36

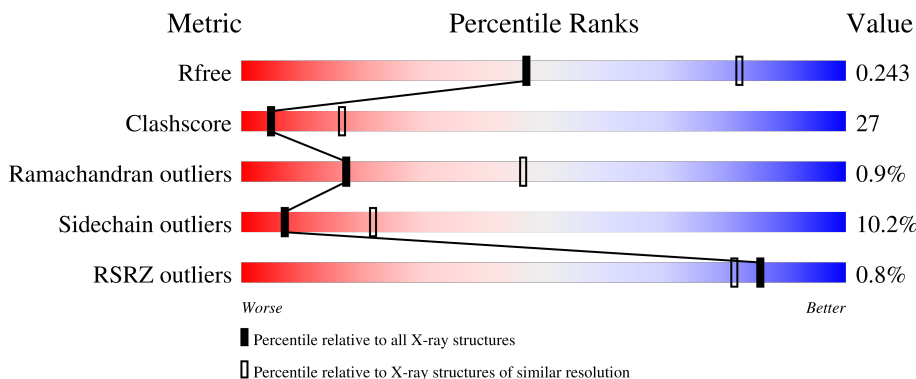
1 Overall quality at a glance

The following experimental techniques were used to determine the structure:

X-RAY DIFFRACTION

The reported resolution of this entry is 2.80 Å.

Percentile scores (ranging between 0-100) for global validation metrics of the entry are shown in the following graphic. The table shows the number of entries on which the scores are based.



Metric	Whole archive (#Entries)	Similar resolution (#Entries, resolution range(Å))
R_{free}	130704	3140 (2.80-2.80)
Clashscore	141614	3569 (2.80-2.80)
Ramachandran outliers	138981	3498 (2.80-2.80)
Sidechain outliers	138945	3500 (2.80-2.80)
RSRZ outliers	127900	3078 (2.80-2.80)

The table below summarises the geometric issues observed across the polymeric chains and their fit to the electron density. The red, orange, yellow and green segments of the lower bar indicate the fraction of residues that contain outliers for ≥ 3 , 2, 1 and 0 types of geometric quality criteria respectively. A grey segment represents the fraction of residues that are not modelled. The numeric value for each fraction is indicated below the corresponding segment, with a dot representing fractions $\leq 5\%$. The upper red bar (where present) indicates the fraction of residues that have poor fit to the electron density. The numeric value is given above the bar.

Mol	Chain	Length	Quality of chain
1	A	301	 50% 42% 6%
1	B	301	 53% 39% 6%
1	C	301	 57% 35% 6%
1	D	301	 54% 38% 6%

The following table lists non-polymeric compounds, carbohydrate monomers and non-standard

residues in protein, DNA, RNA chains that are outliers for geometric or electron-density-fit criteria:

Mol	Type	Chain	Res	Chirality	Geometry	Clashes	Electron density
1	SAC	C	1	-	-	X	-
2	UNC	A	999	-	-	X	-
2	UNC	B	1999	-	-	X	-
2	UNC	C	2999	-	-	X	-
2	UNC	D	3999	-	-	X	-

2 Entry composition

There are 4 unique types of molecules in this entry. The entry contains 9501 atoms, of which 0 are hydrogens and 0 are deuteriums.

In the tables below, the ZeroOcc column contains the number of atoms modelled with zero occupancy, the AltConf column contains the number of residues with at least one atom in alternate conformation and the Trace column contains the number of residues modelled with at most 2 atoms.

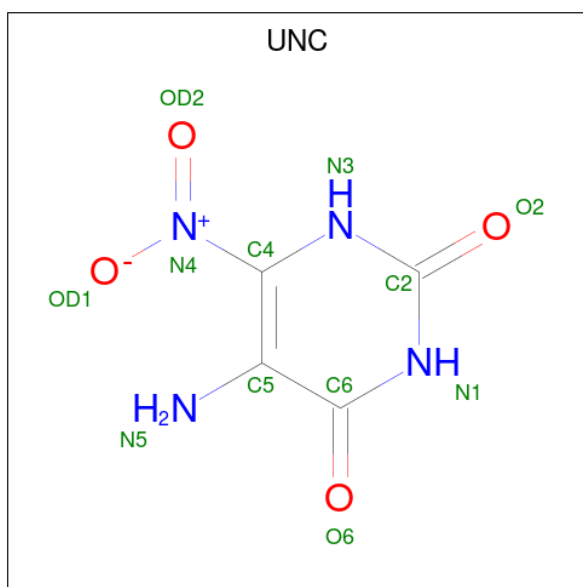
- Molecule 1 is a protein called Uricase.

Mol	Chain	Residues	Atoms					ZeroOcc	AltConf	Trace
			Total	C	N	O	S			
1	A	295	2347	1484	407	449	7	0	0	0
1	B	295	2354	1488	409	450	7	0	0	1
1	C	295	2362	1493	409	453	7	0	0	0
1	D	295	2358	1491	409	451	7	0	0	0

There are 4 discrepancies between the modelled and reference sequences:

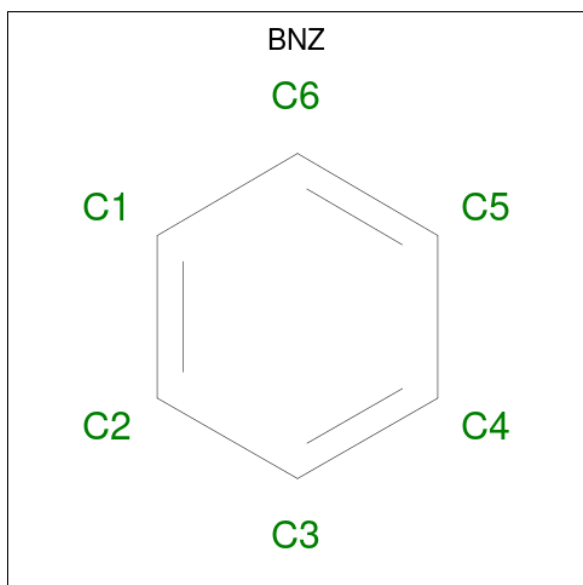
Chain	Residue	Modelled	Actual	Comment	Reference
A	1	SAC	SER	modified residue	UNP Q00511
B	1	SAC	SER	modified residue	UNP Q00511
C	1	SAC	SER	modified residue	UNP Q00511
D	1	SAC	SER	modified residue	UNP Q00511

- Molecule 2 is 5-AMINO-6-NITROPYRIMIDINE-2,4(1H,3H)-DIONE (three-letter code: UNC) (formula: C₄H₄N₄O₄).



Mol	Chain	Residues	Atoms				ZeroOcc	AltConf
			Total	C	N	O		
2	A	1	12	4	4	4	0	0
2	B	1	12	4	4	4	0	0
2	C	1	12	4	4	4	0	0
2	D	1	12	4	4	4	0	0

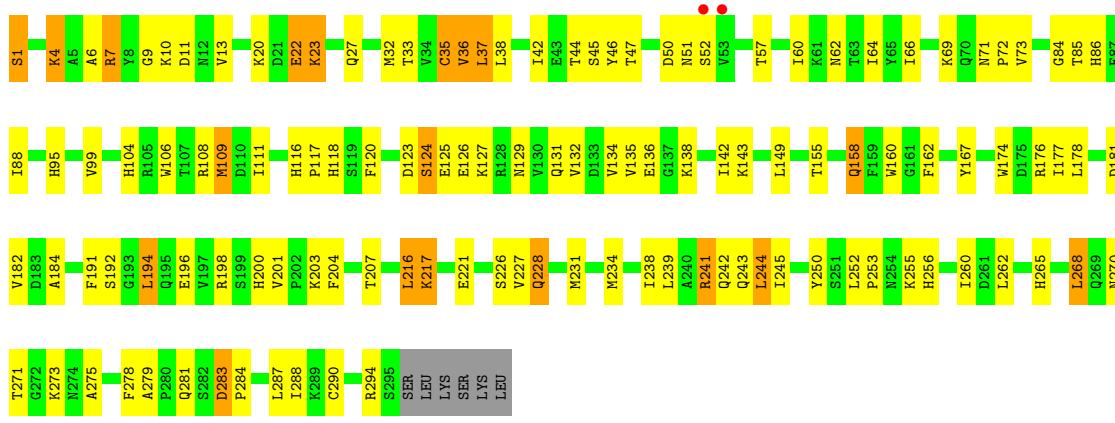
- Molecule 3 is BENZENE (three-letter code: BNZ) (formula: C₆H₆).



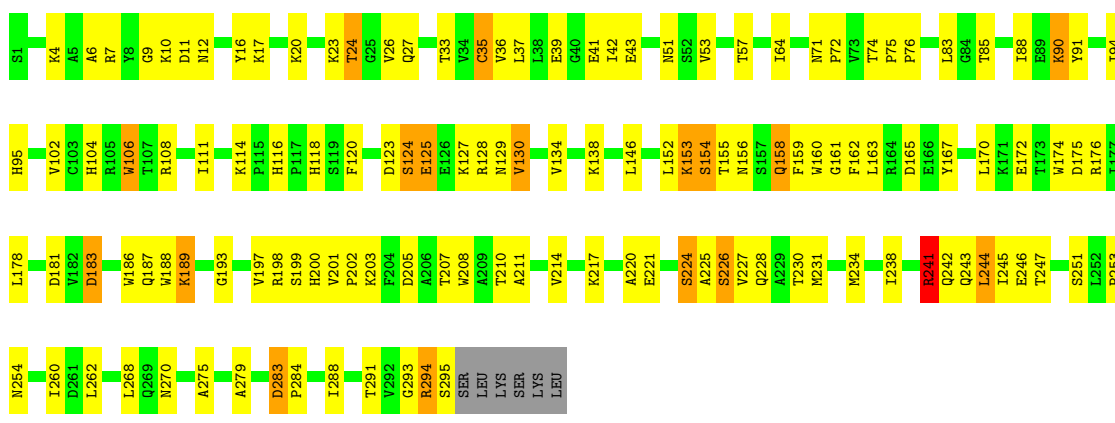
Mol	Chain	Residues	Atoms	ZeroOcc	AltConf
3	C	1	Total C 6 6	0	0

- Molecule 4 is water.

Mol	Chain	Residues	Atoms	ZeroOcc	AltConf
4	A	8	Total O 8 8	0	0
4	B	6	Total O 6 6	0	0
4	C	6	Total O 6 6	0	0
4	D	6	Total O 6 6	0	0



● Molecule 1: Uricase



4 Data and refinement statistics

Property	Value	Source
Space group	P 21 21 2	Depositor
Cell constants a, b, c, α , β , γ	126.25Å 142.26Å 81.32Å 90.00° 90.00° 90.00°	Depositor
Resolution (Å)	15.00 – 2.80 31.55 – 2.80	Depositor EDS
% Data completeness (in resolution range)	(Not available) (15.00-2.80) 98.9 (31.55-2.80)	Depositor EDS
R_{merge}	(Not available)	Depositor
R_{sym}	0.07	Depositor
$\langle I/\sigma(I) \rangle$ ¹	4.97 (at 2.81Å)	Xtrriage
Refinement program	BUSTER-TNT	Depositor
R, R_{free}	0.189 , 0.248 0.186 , 0.243	Depositor DCC
R_{free} test set	3605 reflections (9.91%)	wwPDB-VP
Wilson B-factor (Å ²)	49.3	Xtrriage
Anisotropy	0.650	Xtrriage
Bulk solvent k_{sol} (e/Å ³), B_{sol} (Å ²)	0.27 , 53.0	EDS
L-test for twinning ²	$\langle L \rangle = 0.48$, $\langle L^2 \rangle = 0.32$	Xtrriage
Estimated twinning fraction	No twinning to report.	Xtrriage
F_o, F_c correlation	0.93	EDS
Total number of atoms	9501	wwPDB-VP
Average B, all atoms (Å ²)	47.0	wwPDB-VP

Xtrriage's analysis on translational NCS is as follows: *The largest off-origin peak in the Patterson function is 3.45% of the height of the origin peak. No significant pseudotranslation is detected.*

¹Intensities estimated from amplitudes.

²Theoretical values of $\langle |L| \rangle$, $\langle L^2 \rangle$ for acentric reflections are 0.5, 0.333 respectively for untwinned datasets, and 0.375, 0.2 for perfectly twinned datasets.

5 Model quality [i](#)

5.1 Standard geometry [i](#)

Bond lengths and bond angles in the following residue types are not validated in this section: SAC, UNC, BNZ

The Z score for a bond length (or angle) is the number of standard deviations the observed value is removed from the expected value. A bond length (or angle) with $|Z| > 5$ is considered an outlier worth inspection. RMSZ is the root-mean-square of all Z scores of the bond lengths (or angles).

Mol	Chain	Bond lengths		Bond angles	
		RMSZ	# Z >5	RMSZ	# Z >5
1	A	0.66	0/2393	0.67	0/3251
1	B	0.69	0/2401	0.68	0/3259
1	C	0.72	0/2406	0.69	0/3265
1	D	0.72	0/2405	0.68	1/3264 (0.0%)
All	All	0.70	0/9605	0.68	1/13039 (0.0%)

There are no bond length outliers.

All (1) bond angle outliers are listed below:

Mol	Chain	Res	Type	Atoms	Z	Observed(°)	Ideal(°)
1	D	241	ARG	NE-CZ-NH1	5.05	122.82	120.30

There are no chirality outliers.

There are no planarity outliers.

5.2 Too-close contacts [i](#)

In the following table, the Non-H and H(model) columns list the number of non-hydrogen atoms and hydrogen atoms in the chain respectively. The H(added) column lists the number of hydrogen atoms added and optimized by MolProbity. The Clashes column lists the number of clashes within the asymmetric unit, whereas Symm-Clashes lists symmetry-related clashes.

Mol	Chain	Non-H	H(model)	H(added)	Clashes	Symm-Clashes
1	A	2347	0	2295	148	0
1	B	2354	0	2315	140	0
1	C	2362	0	2324	150	0
1	D	2358	0	2320	138	0
2	A	12	0	4	7	0
2	B	12	0	4	6	0

Continued on next page...

Continued from previous page...

Mol	Chain	Non-H	H(model)	H(added)	Clashes	Symm-Clashes
2	C	12	0	4	6	0
2	D	12	0	4	4	0
3	C	6	0	6	3	0
4	A	8	0	0	2	0
4	B	6	0	0	0	0
4	C	6	0	0	0	0
4	D	6	0	0	0	0
All	All	9501	0	9276	515	0

The all-atom clashscore is defined as the number of clashes found per 1000 atoms (including hydrogen atoms). The all-atom clashscore for this structure is 27.

All (515) close contacts within the same asymmetric unit are listed below, sorted by their clash magnitude.

Atom-1	Atom-2	Interatomic distance (Å)	Clash overlap (Å)
1:B:228:GLN:HE21	1:B:228:GLN:N	1.44	1.15
1:A:228:GLN:H	1:A:228:GLN:NE2	1.44	1.14
1:A:228:GLN:HE21	1:A:228:GLN:N	1.48	1.11
1:D:227:VAL:HG11	1:D:288:ILE:HD13	1.34	1.09
1:B:228:GLN:H	1:B:228:GLN:NE2	1.49	1.09
1:D:241:ARG:HH11	1:D:241:ARG:HG2	1.14	1.04
1:C:7:ARG:HH11	1:C:7:ARG:HG2	1.26	1.00
1:A:239:LEU:HD11	1:A:292:VAL:HG12	1.44	0.99
1:A:34:VAL:HG13	1:A:101:ILE:HG12	1.44	0.97
1:D:27:GLN:HE21	1:D:118:HIS:HB3	1.32	0.94
1:A:76:PRO:HB2	1:A:130:VAL:HG11	1.51	0.91
1:C:228:GLN:H	1:C:228:GLN:HE21	1.10	0.91
1:C:176:ARG:HH12	2:C:2999:UNC:HN3	1.17	0.90
1:B:176:ARG:NH1	2:B:1999:UNC:HN3	1.69	0.89
1:A:294:ARG:HH11	1:A:294:ARG:HG2	1.36	0.88
1:A:53:VAL:HG23	1:A:54:ILE:HD13	1.57	0.87
1:B:176:ARG:HH12	2:B:1999:UNC:HN3	0.87	0.87
1:A:217:LYS:HA	1:C:111:ILE:CD1	2.06	0.86
1:C:228:GLN:H	1:C:228:GLN:NE2	1.73	0.86
1:C:57:THR:H	2:D:3999:UNC:HN52	1.23	0.84
1:A:200:HIS:HD2	1:A:203:LYS:HE2	1.42	0.84
1:A:76:PRO:HB2	1:A:130:VAL:CG1	2.08	0.83
1:A:217:LYS:HA	1:C:111:ILE:HD11	1.61	0.82
1:B:51:ASN:HA	1:B:54:ILE:HD12	1.61	0.82
1:A:262:LEU:HD22	1:C:66:ILE:HD13	1.62	0.80
1:C:226:SER:HB2	1:C:228:GLN:NE2	1.97	0.80

Continued on next page...

Continued from previous page...

Atom-1	Atom-2	Interatomic distance (Å)	Clash overlap (Å)
1:C:1:SAC:H2A1	1:D:294:ARG:HA	1.62	0.80
1:A:262:LEU:HD22	1:C:66:ILE:CD1	2.12	0.80
1:C:36:VAL:HG13	1:C:99:VAL:HG22	1.63	0.80
1:B:71:ASN:N	1:B:71:ASN:HD22	1.80	0.79
1:C:294:ARG:HH11	1:C:294:ARG:HG2	1.46	0.79
1:A:162:PHE:HA	1:B:51:ASN:O	1.83	0.79
1:D:227:VAL:CG1	1:D:288:ILE:HD13	2.10	0.79
1:C:51:ASN:O	1:D:162:PHE:HA	1.82	0.78
1:D:158:GLN:HG2	1:D:174:TRP:O	1.83	0.78
1:A:227:VAL:HG23	2:A:999:UNC:O2	1.84	0.78
1:D:88:ILE:HD13	1:D:134:VAL:HG12	1.65	0.78
1:C:162:PHE:HA	1:D:51:ASN:O	1.84	0.78
1:B:217:LYS:HA	1:D:111:ILE:HD12	1.67	0.76
1:A:251:SER:O	1:A:252:LEU:HD23	1.84	0.76
1:C:7:ARG:HG2	1:C:7:ARG:NH1	1.96	0.76
1:C:71:ASN:HB3	1:C:72:PRO:HD2	1.68	0.76
2:A:999:UNC:N5	1:B:57:THR:HG23	2.01	0.75
1:D:193:GLY:O	1:D:197:VAL:HG23	1.87	0.75
1:B:238:ILE:HG21	1:B:248:VAL:HG21	1.69	0.74
1:D:241:ARG:HG2	1:D:241:ARG:NH1	1.88	0.74
1:D:260:ILE:HD11	1:D:279:ALA:HB2	1.69	0.74
1:B:181:ASP:OD2	1:B:255:LYS:HE3	1.88	0.74
1:C:1:SAC:H2A3	1:D:295:SER:H	1.50	0.74
1:B:294:ARG:HG2	1:B:294:ARG:HH11	1.52	0.73
1:C:57:THR:HA	1:C:60:ILE:HD12	1.69	0.73
1:D:242:GLN:OE1	1:D:244:LEU:HB2	1.89	0.73
1:A:242:GLN:OE1	1:A:244:LEU:HB2	1.89	0.72
1:B:76:PRO:HB2	1:B:130:VAL:HG11	1.70	0.72
1:B:76:PRO:HB2	1:B:130:VAL:CG1	2.20	0.71
2:A:999:UNC:HN52	1:B:57:THR:H	1.39	0.71
1:D:27:GLN:HE21	1:D:118:HIS:CB	2.02	0.71
1:C:116:HIS:CG	1:C:117:PRO:HD2	2.26	0.70
1:D:104:HIS:HD2	1:D:127:LYS:NZ	1.89	0.70
1:C:283:ASP:HB2	1:C:284:PRO:HA	1.73	0.70
1:D:155:THR:HG23	1:D:156:ASN:N	2.05	0.70
1:B:85:THR:O	1:B:88:ILE:HG13	1.91	0.70
1:C:104:HIS:HD2	1:C:127:LYS:NZ	1.89	0.70
1:A:294:ARG:HG2	1:A:294:ARG:NH1	2.00	0.70
1:A:57:THR:H	2:B:1999:UNC:HN52	1.39	0.69
1:A:134:VAL:HG22	1:A:140:ILE:HG23	1.74	0.69
1:A:20:LYS:HG2	1:A:27:GLN:HE21	1.57	0.68

Continued on next page...

Continued from previous page...

Atom-1	Atom-2	Interatomic distance (Å)	Clash overlap (Å)
1:B:28:THR:HG22	1:B:30:TYR:CE2	2.28	0.68
1:D:88:ILE:HD13	1:D:134:VAL:CG1	2.22	0.68
1:B:242:GLN:OE1	1:B:244:LEU:HB2	1.94	0.68
1:C:239:LEU:CD2	1:C:245:ILE:HG22	2.23	0.68
1:B:191:PHE:HE1	1:B:200:HIS:HD1	1.43	0.67
1:D:181:ASP:O	1:D:253:PRO:HD2	1.94	0.67
1:C:20:LYS:HG2	1:C:27:GLN:OE1	1.93	0.66
1:D:125:GLU:O	1:D:127:LYS:HE2	1.95	0.66
1:A:108:ARG:HD3	1:A:116:HIS:O	1.95	0.66
1:B:17:LYS:NZ	1:B:71:ASN:O	2.27	0.66
1:C:228:GLN:HE21	1:C:228:GLN:N	1.88	0.66
1:A:201:VAL:HG12	1:A:202:PRO:HD3	1.76	0.66
1:C:231:MET:HE2	1:C:250:TYR:HB3	1.78	0.66
1:D:234:MET:O	1:D:238:ILE:HG12	1.95	0.66
1:B:177:ILE:HD11	1:D:16:TYR:CE1	2.31	0.66
1:C:270:ASN:O	1:C:275:ALA:HA	1.96	0.66
1:B:245:ILE:HD13	1:B:245:ILE:N	2.11	0.66
1:B:200:HIS:HD2	1:B:203:LYS:NZ	1.93	0.65
1:D:64:ILE:HG12	1:D:83:LEU:HD21	1.78	0.65
1:B:163:LEU:HD23	1:B:164:ARG:N	2.12	0.65
1:A:42:ILE:HD12	1:A:46:TYR:HE1	1.61	0.65
1:B:238:ILE:CG2	1:B:248:VAL:HG21	2.26	0.65
1:D:200:HIS:ND1	1:D:203:LYS:NZ	2.39	0.65
1:C:279:ALA:O	1:C:281:GLN:NE2	2.29	0.65
1:D:228:GLN:N	1:D:228:GLN:OE1	2.29	0.65
1:A:39:GLU:HB2	1:A:96:ALA:HB3	1.78	0.65
1:C:217:LYS:HE3	1:C:221:GLU:OE2	1.95	0.65
1:C:231:MET:CE	1:C:250:TYR:HB3	2.28	0.65
1:C:260:ILE:HD12	1:C:278:PHE:HA	1.77	0.65
1:A:71:ASN:HB3	1:A:72:PRO:CD	2.26	0.64
1:B:294:ARG:HG2	1:B:294:ARG:NH1	2.13	0.64
1:C:62:ASN:O	1:C:66:ILE:HG12	1.98	0.64
1:A:34:VAL:CG1	1:A:101:ILE:HG12	2.24	0.64
1:B:111:ILE:HD13	1:D:217:LYS:HA	1.80	0.64
1:B:112:ASP:OD2	1:D:217:LYS:NZ	2.30	0.64
1:C:135:VAL:HB	1:C:138:LYS:HB2	1.80	0.64
1:C:9:GLY:HA3	1:C:36:VAL:O	1.97	0.64
1:D:160:TRP:HB2	1:D:172:GLU:OE2	1.97	0.64
1:D:227:VAL:HG11	1:D:288:ILE:CD1	2.19	0.63
1:C:231:MET:HE2	1:C:250:TYR:CB	2.28	0.63
1:A:71:ASN:HB3	1:A:72:PRO:HD2	1.80	0.63

Continued on next page...

Continued from previous page...

Atom-1	Atom-2	Interatomic distance (Å)	Clash overlap (Å)
1:A:10:LYS:NZ	1:B:256:HIS:NE2	2.46	0.63
1:A:217:LYS:HA	1:C:111:ILE:HD13	1.77	0.63
1:A:60:ILE:O	1:A:64:ILE:HG13	1.98	0.62
1:B:158:GLN:NE2	1:B:223:ASN:OD1	2.31	0.62
1:B:176:ARG:NH2	2:B:1999:UNC:O2	2.29	0.62
1:C:57:THR:N	2:D:3999:UNC:N5	2.43	0.62
2:C:2999:UNC:HN51	1:D:57:THR:H	1.43	0.62
1:C:104:HIS:HD2	1:C:127:LYS:HZ2	1.46	0.62
1:C:181:ASP:OD2	1:C:255:LYS:HE3	1.98	0.62
1:A:231:MET:HE2	1:A:250:TYR:HB3	1.81	0.62
1:A:51:ASN:O	1:B:162:PHE:HA	2.00	0.61
1:B:70:GLN:C	1:B:71:ASN:HD22	2.04	0.61
1:D:201:VAL:N	1:D:202:PRO:HD2	2.15	0.61
1:D:242:GLN:CG	1:D:245:ILE:HG12	2.31	0.61
1:A:231:MET:SD	1:A:288:ILE:HG22	2.39	0.61
1:D:210:THR:O	1:D:214:VAL:HG23	2.01	0.60
1:D:90:LYS:HG2	1:D:91:TYR:CE2	2.37	0.60
1:D:241:ARG:HH11	1:D:241:ARG:CG	2.03	0.60
1:C:108:ARG:HD3	1:C:116:HIS:O	2.02	0.60
1:A:20:LYS:CG	1:A:27:GLN:HE21	2.15	0.60
1:B:231:MET:SD	1:B:288:ILE:HG22	2.41	0.60
1:A:33:THR:OG1	1:A:104:HIS:HE1	1.85	0.60
1:A:239:LEU:HD11	1:A:292:VAL:CG1	2.27	0.60
1:B:7:ARG:HA	1:B:38:LEU:O	2.02	0.60
1:B:238:ILE:HG21	1:B:248:VAL:CG2	2.31	0.60
1:A:45:SER:CB	1:A:54:ILE:HD11	2.31	0.60
1:A:121:ILE:HD11	1:C:149:LEU:HD11	1.83	0.59
1:A:200:HIS:O	1:A:203:LYS:HG3	2.01	0.59
1:C:227:VAL:CG1	1:C:288:ILE:HD13	2.32	0.59
1:B:116:HIS:CG	1:B:117:PRO:HD2	2.37	0.59
2:C:2999:UNC:N5	1:D:57:THR:HG23	2.17	0.59
1:C:85:THR:HG21	1:C:194:LEU:HD12	1.85	0.58
1:D:176:ARG:HH12	2:D:3999:UNC:HN3	1.51	0.58
1:A:78:LEU:HD22	1:A:201:VAL:HG21	1.83	0.58
1:B:176:ARG:HH22	2:B:1999:UNC:C2	2.16	0.58
1:A:187:GLN:HG3	1:A:188:TRP:N	2.19	0.58
1:A:201:VAL:HG12	1:A:202:PRO:CD	2.34	0.58
1:B:45:SER:HB2	1:B:54:ILE:HD11	1.85	0.58
1:B:158:GLN:HG2	1:B:174:TRP:O	2.04	0.58
1:C:294:ARG:HH11	1:C:294:ARG:CG	2.17	0.58
1:D:227:VAL:HG12	1:D:288:ILE:HG21	1.86	0.58

Continued on next page...

Continued from previous page...

Atom-1	Atom-2	Interatomic distance (Å)	Clash overlap (Å)
1:C:287:LEU:HD23	1:D:37:LEU:HD21	1.85	0.58
1:A:55:VAL:HG22	1:B:163:LEU:HD13	1.86	0.58
1:C:33:THR:OG1	1:C:104:HIS:HE1	1.85	0.58
1:A:220:ALA:HB3	1:C:111:ILE:CD1	2.34	0.57
1:C:283:ASP:CB	1:C:284:PRO:HA	2.32	0.57
1:C:1:SAC:C2A	1:D:295:SER:H	2.17	0.57
1:C:167:TYR:HE2	1:D:90:LYS:HD3	1.69	0.57
1:D:76:PRO:HB2	1:D:130:VAL:CG1	2.35	0.57
1:C:178:LEU:HD11	1:C:227:VAL:CG2	2.34	0.57
1:B:66:ILE:O	1:B:70:GLN:HG3	2.05	0.57
1:D:231:MET:SD	1:D:288:ILE:HG22	2.45	0.57
1:C:132:VAL:HG22	1:C:142:ILE:HG12	1.86	0.57
1:A:199:SER:OG	1:A:200:HIS:N	2.37	0.57
2:C:2999:UNC:HN52	1:D:57:THR:H	1.51	0.57
1:B:43:GLU:CD	1:B:43:GLU:H	2.07	0.56
1:C:1:SAC:C2A	1:D:294:ARG:HA	2.32	0.56
1:A:68:ALA:HA	1:A:79:PHE:HE1	1.70	0.56
1:B:70:GLN:HB2	1:B:71:ASN:ND2	2.20	0.56
1:C:1:SAC:C2A	1:D:294:ARG:HB3	2.35	0.56
1:C:116:HIS:ND1	1:C:117:PRO:HD2	2.21	0.56
1:B:27:GLN:OE1	1:D:154:SER:HB2	2.04	0.56
1:C:71:ASN:HB3	1:C:72:PRO:CD	2.35	0.56
1:B:56:ALA:O	1:B:59:SER:HB2	2.06	0.56
1:C:4:LYS:HG3	1:D:293:GLY:N	2.20	0.56
1:B:71:ASN:HB3	1:B:72:PRO:CD	2.35	0.56
1:B:57:THR:HA	1:B:60:ILE:HD12	1.87	0.56
1:B:111:ILE:CD1	1:D:217:LYS:HA	2.36	0.56
1:A:78:LEU:HD22	1:A:201:VAL:CG2	2.36	0.55
1:C:176:ARG:NH2	2:C:2999:UNC:O2	2.36	0.55
1:D:106:TRP:HA	1:D:106:TRP:CE3	2.40	0.55
1:C:228:GLN:HG3	1:C:288:ILE:HG21	1.88	0.55
1:A:181:ASP:O	1:A:253:PRO:HD2	2.06	0.55
1:B:203:LYS:HD3	1:B:244:LEU:HD22	1.88	0.55
1:A:215:THR:O	1:A:234:MET:HE2	2.07	0.55
1:A:239:LEU:CD1	1:A:292:VAL:HG12	2.30	0.55
1:B:112:ASP:O	1:B:114:LYS:HG3	2.06	0.55
1:D:43:GLU:CD	1:D:43:GLU:H	2.10	0.55
1:A:163:LEU:HD23	1:A:164:ARG:N	2.22	0.55
1:D:152:LEU:HD23	1:D:153:LYS:N	2.22	0.54
1:C:7:ARG:HD3	1:C:37:LEU:CD1	2.38	0.54
1:C:57:THR:N	2:D:3999:UNC:HN52	2.00	0.54

Continued on next page...

Continued from previous page...

Atom-1	Atom-2	Interatomic distance (Å)	Clash overlap (Å)
1:A:200:HIS:CD2	1:A:203:LYS:HE2	2.33	0.54
1:B:181:ASP:O	1:B:253:PRO:HD2	2.08	0.54
1:D:294:ARG:HB3	1:D:294:ARG:HH11	1.73	0.54
1:D:24:THR:OG1	1:D:26:VAL:HG23	2.07	0.54
1:A:262:LEU:HD22	1:C:66:ILE:HD11	1.90	0.54
1:B:17:LYS:NZ	1:B:68:ALA:O	2.29	0.53
1:B:191:PHE:HE1	1:B:200:HIS:ND1	2.04	0.53
1:A:198:ARG:HG2	1:A:198:ARG:HH11	1.73	0.53
1:B:111:ILE:O	1:B:112:ASP:HB2	2.07	0.53
1:D:211:ALA:HA	1:D:238:ILE:CD1	2.37	0.53
1:A:53:VAL:CG2	1:A:54:ILE:HD13	2.35	0.53
1:B:71:ASN:N	1:B:71:ASN:ND2	2.50	0.53
1:A:188:TRP:HH2	1:A:207:THR:HG1	1.56	0.53
1:C:7:ARG:HD3	1:C:37:LEU:HD12	1.91	0.53
1:B:101:ILE:HB	1:B:130:VAL:HG22	1.89	0.53
1:D:294:ARG:HH11	1:D:294:ARG:CG	2.21	0.53
1:A:17:LYS:NZ	1:A:71:ASN:O	2.40	0.52
1:B:200:HIS:HD2	1:B:203:LYS:HZ2	1.55	0.52
1:A:102:VAL:HG22	1:A:129:ASN:ND2	2.25	0.52
1:D:41:GLU:HG3	1:D:95:HIS:NE2	2.25	0.52
1:D:188:TRP:CE3	1:D:244:LEU:HB3	2.44	0.52
1:D:225:ALA:O	1:D:226:SER:HB2	2.10	0.52
1:B:109:MET:CE	1:B:119:SER:HB3	2.40	0.52
2:C:2999:UNC:HN52	1:D:57:THR:HG23	1.73	0.52
1:A:63:THR:HG21	1:A:87:PHE:CZ	2.45	0.52
1:B:203:LYS:CD	1:B:244:LEU:HD22	2.39	0.52
1:D:104:HIS:HD2	1:D:127:LYS:HZ3	1.58	0.52
1:D:200:HIS:C	1:D:202:PRO:HD2	2.29	0.52
1:A:146:LEU:HD12	1:A:146:LEU:O	2.10	0.52
1:C:1:SAC:H2A3	1:D:295:SER:N	2.23	0.52
1:D:7:ARG:HG3	1:D:39:GLU:HG3	1.90	0.52
1:A:102:VAL:HG22	1:A:129:ASN:HD22	1.74	0.52
1:A:220:ALA:HB3	1:C:111:ILE:HD12	1.92	0.52
1:B:160:TRP:HB3	1:B:172:GLU:HB3	1.90	0.52
1:D:123:ASP:O	1:D:124:SER:HB2	2.09	0.52
1:A:116:HIS:CG	1:A:117:PRO:HD2	2.44	0.51
1:A:231:MET:HE2	1:A:250:TYR:CB	2.41	0.51
1:A:242:GLN:CG	1:A:245:ILE:HG12	2.40	0.51
1:B:238:ILE:HG22	1:B:239:LEU:N	2.24	0.51
1:B:21:ASP:O	1:B:25:GLY:HA2	2.09	0.51
1:A:201:VAL:CG1	1:A:202:PRO:HD3	2.39	0.51

Continued on next page...

Continued from previous page...

Atom-1	Atom-2	Interatomic distance (Å)	Clash overlap (Å)
1:C:239:LEU:HD23	1:C:245:ILE:HG22	1.92	0.51
1:A:85:THR:O	1:A:88:ILE:HG13	2.10	0.51
1:A:123:ASP:O	1:C:123:ASP:O	2.29	0.51
1:C:200:HIS:CD2	1:C:203:LYS:NZ	2.78	0.51
1:A:3:VAL:HG12	1:A:3:VAL:O	2.10	0.51
1:B:253:PRO:HA	1:B:286:GLY:O	2.10	0.51
1:D:146:LEU:HD12	1:D:146:LEU:C	2.31	0.51
1:A:20:LYS:HE2	1:A:27:GLN:NE2	2.25	0.51
1:C:294:ARG:HG2	1:C:294:ARG:NH1	2.23	0.51
1:D:183:ASP:HB3	1:D:251:SER:HB3	1.93	0.50
1:B:111:ILE:HD12	1:D:220:ALA:HB3	1.93	0.50
1:C:227:VAL:HG11	1:C:288:ILE:CD1	2.41	0.50
1:D:9:GLY:HA3	1:D:36:VAL:O	2.11	0.50
1:B:239:LEU:HD11	1:B:292:VAL:O	2.11	0.50
1:D:75:PRO:HB2	1:D:76:PRO:HD2	1.94	0.50
1:B:120:PHE:N	1:B:120:PHE:CD1	2.79	0.50
1:B:123:ASP:O	1:D:123:ASP:O	2.29	0.50
1:D:12:ASN:HA	1:D:33:THR:CG2	2.42	0.50
1:D:161:GLY:N	1:D:172:GLU:OE2	2.41	0.50
1:A:152:LEU:HD12	1:A:179:SER:HB2	1.93	0.50
2:A:999:UNC:HN52	1:B:57:THR:HG23	1.75	0.50
1:B:9:GLY:HA3	1:B:36:VAL:O	2.12	0.50
1:B:23:LYS:HG3	1:B:24:THR:H	1.77	0.50
1:B:104:HIS:HD2	1:B:127:LYS:NZ	2.10	0.50
1:C:207:THR:HG21	1:C:245:ILE:HD11	1.92	0.50
1:A:123:ASP:O	1:A:124:SER:HB2	2.12	0.50
1:C:260:ILE:HD11	1:C:278:PHE:C	2.32	0.50
1:D:11:ASP:OD1	1:D:35:CYS:HB2	2.10	0.50
1:A:251:SER:C	1:A:252:LEU:HD23	2.31	0.49
1:D:188:TRP:HE3	1:D:244:LEU:HB3	1.77	0.49
1:D:189:LYS:HA	1:D:246:GLU:HG3	1.94	0.49
1:A:200:HIS:HB3	1:A:203:LYS:HG3	1.94	0.49
1:B:109:MET:HG3	1:B:119:SER:O	2.12	0.49
1:C:167:TYR:CE2	1:D:90:LYS:HD3	2.47	0.49
1:C:200:HIS:HD2	1:C:203:LYS:NZ	2.09	0.49
1:B:163:LEU:HD23	1:B:163:LEU:C	2.33	0.49
1:C:203:LYS:HD3	1:C:244:LEU:HD23	1.93	0.49
1:D:7:ARG:CG	1:D:39:GLU:HG3	2.42	0.49
1:D:108:ARG:HD3	1:D:116:HIS:O	2.12	0.49
1:A:155:THR:CG2	1:C:27:GLN:HE22	2.26	0.49
1:A:17:LYS:HE3	1:A:68:ALA:O	2.13	0.49

Continued on next page...

Continued from previous page...

Atom-1	Atom-2	Interatomic distance (Å)	Clash overlap (Å)
1:A:26:VAL:O	1:A:26:VAL:HG12	2.12	0.49
1:A:241:ARG:HH11	1:A:241:ARG:CG	2.26	0.49
1:B:200:HIS:CD2	1:B:203:LYS:NZ	2.79	0.49
1:D:162:PHE:HZ	1:D:170:LEU:O	1.96	0.49
1:C:120:PHE:N	1:C:120:PHE:CD1	2.81	0.49
1:D:104:HIS:HD2	1:D:127:LYS:HZ2	1.60	0.49
1:A:201:VAL:CB	1:A:202:PRO:HD3	2.43	0.49
1:B:155:THR:HG22	1:D:27:GLN:HE22	1.78	0.49
1:B:217:LYS:HA	1:D:111:ILE:CD1	2.41	0.49
1:C:182:VAL:HG22	1:C:252:LEU:HD22	1.94	0.49
1:C:242:GLN:CG	1:C:245:ILE:HD13	2.43	0.49
1:C:241:ARG:HH11	1:C:241:ARG:CG	2.26	0.48
1:D:152:LEU:HD23	1:D:152:LEU:C	2.33	0.48
1:A:217:LYS:HE3	1:A:221:GLU:OE2	2.12	0.48
1:A:228:GLN:NE2	1:A:228:GLN:N	2.28	0.48
1:A:288:ILE:HG13	1:B:8:TYR:HB2	1.94	0.48
1:B:198:ARG:HA	1:B:201:VAL:HG23	1.95	0.48
1:A:167:TYR:HE2	1:B:90:LYS:HE2	1.78	0.48
1:B:29:VAL:HG22	1:B:120:PHE:CD2	2.48	0.48
1:C:36:VAL:HG23	1:C:64:ILE:HD11	1.95	0.48
1:B:108:ARG:HD3	1:B:116:HIS:O	2.13	0.48
1:A:186:TRP:CZ2	1:A:208:TRP:HA	2.48	0.48
1:B:76:PRO:HB2	1:B:130:VAL:HG13	1.95	0.48
1:B:122:ARG:O	1:B:122:ARG:HG3	2.14	0.48
1:D:76:PRO:HB2	1:D:130:VAL:HG13	1.96	0.48
1:B:108:ARG:NH1	1:B:117:PRO:O	2.45	0.48
1:B:283:ASP:HB2	1:B:284:PRO:HA	1.95	0.48
1:C:231:MET:HE3	1:C:252:LEU:HG	1.96	0.48
1:D:120:PHE:N	1:D:120:PHE:CD1	2.81	0.48
1:B:137:GLY:O	1:B:138:LYS:HG2	2.14	0.48
1:B:214:VAL:HG12	1:B:215:THR:N	2.28	0.48
2:B:1999:UNC:OD1	2:B:1999:UNC:N5	2.26	0.48
1:C:6:ALA:HB1	1:C:46:TYR:CE1	2.49	0.48
1:D:163:LEU:HD23	1:D:163:LEU:C	2.34	0.48
1:A:106:TRP:HA	1:A:106:TRP:CE3	2.49	0.48
1:A:155:THR:HG22	1:C:27:GLN:NE2	2.28	0.48
1:B:105:ARG:NH2	1:B:123:ASP:OD2	2.44	0.48
1:C:194:LEU:O	1:C:198:ARG:HG3	2.13	0.48
1:A:7:ARG:CZ	1:A:98:HIS:CD2	2.97	0.48
1:B:177:ILE:HD11	1:D:16:TYR:CZ	2.49	0.48
1:B:26:VAL:HG22	1:B:117:PRO:HA	1.96	0.47

Continued on next page...

Continued from previous page...

Atom-1	Atom-2	Interatomic distance (Å)	Clash overlap (Å)
1:C:124:SER:OG	1:C:126:GLU:HB2	2.15	0.47
1:C:203:LYS:CD	1:C:244:LEU:HD23	2.44	0.47
1:A:20:LYS:CE	1:A:27:GLN:HE21	2.27	0.47
1:B:21:ASP:OD2	1:B:22:GLU:N	2.48	0.47
1:D:211:ALA:HA	1:D:238:ILE:HD12	1.96	0.47
1:B:160:TRP:CB	1:B:172:GLU:HB3	2.44	0.47
1:A:166:GLU:OE1	1:A:166:GLU:N	2.38	0.47
1:C:191:PHE:CD1	1:C:196:GLU:HG2	2.49	0.47
1:C:198:ARG:HA	1:C:201:VAL:HG23	1.96	0.47
1:C:106:TRP:CE3	1:C:106:TRP:HA	2.49	0.47
2:A:999:UNC:HN51	1:B:57:THR:H	1.57	0.47
1:B:21:ASP:OD1	1:B:24:THR:OG1	2.32	0.47
1:A:53:VAL:HG23	1:A:54:ILE:CD1	2.38	0.47
1:A:66:ILE:HG13	1:C:262:LEU:HD22	1.94	0.47
1:B:48:LYS:O	1:B:49:ALA:HB3	2.15	0.47
1:B:85:THR:HG21	1:B:194:LEU:HD12	1.97	0.47
1:D:187:GLN:HB3	1:D:247:THR:CG2	2.44	0.47
1:C:123:ASP:O	1:C:124:SER:HB2	2.15	0.47
1:C:228:GLN:HG3	1:C:288:ILE:CG2	2.45	0.47
1:A:242:GLN:HG3	1:A:245:ILE:HG12	1.96	0.47
1:C:22:GLU:HA	1:C:22:GLU:OE1	2.15	0.47
1:A:163:LEU:HD23	1:A:163:LEU:C	2.35	0.46
1:A:176:ARG:HH12	2:A:999:UNC:HN3	1.62	0.46
1:B:241:ARG:CG	1:B:241:ARG:HH11	2.28	0.46
1:C:88:ILE:HD13	1:C:134:VAL:HG12	1.96	0.46
1:D:294:ARG:CG	1:D:294:ARG:NH1	2.78	0.46
1:D:294:ARG:NH1	1:D:294:ARG:HG2	2.30	0.46
1:A:62:ASN:O	1:A:66:ILE:HD12	2.16	0.46
1:B:70:GLN:HB2	1:B:71:ASN:HD22	1.80	0.46
1:C:184:ALA:HB2	1:C:250:TYR:CE1	2.51	0.46
1:A:16:TYR:CZ	1:C:177:ILE:HD13	2.51	0.46
1:A:76:PRO:HB2	1:A:130:VAL:HG13	1.93	0.46
1:D:155:THR:OG1	1:D:175:ASP:OD1	2.30	0.46
1:D:178:LEU:HD11	1:D:227:VAL:HG23	1.98	0.46
1:B:86:HIS:CD2	1:B:87:PHE:N	2.84	0.46
1:D:76:PRO:HB2	1:D:130:VAL:HG11	1.96	0.46
1:C:182:VAL:HG22	1:C:252:LEU:CD2	2.46	0.46
1:B:29:VAL:HG22	1:B:120:PHE:CE2	2.51	0.46
1:A:20:LYS:CE	1:A:27:GLN:NE2	2.79	0.45
1:A:55:VAL:HG12	1:A:55:VAL:O	2.14	0.45
1:A:158:GLN:HB3	1:A:174:TRP:HA	1.98	0.45

Continued on next page...

Continued from previous page...

Atom-1	Atom-2	Interatomic distance (Å)	Clash overlap (Å)
1:B:93:HIS:ND1	1:B:93:HIS:N	2.59	0.45
1:B:23:LYS:HB2	1:B:23:LYS:HE2	1.30	0.45
1:B:71:ASN:OD1	1:B:82:ILE:HG21	2.15	0.45
1:B:160:TRP:HB2	1:B:172:GLU:OE2	2.16	0.45
1:D:270:ASN:O	1:D:275:ALA:HA	2.15	0.45
1:A:294:ARG:HH11	1:A:294:ARG:CG	2.16	0.45
1:B:155:THR:CG2	1:D:27:GLN:HE22	2.29	0.45
1:D:10:LYS:HD2	1:D:57:THR:HB	1.98	0.45
1:A:41:GLU:HG3	1:A:95:HIS:NE2	2.31	0.45
1:B:186:TRP:CZ2	1:B:208:TRP:HA	2.51	0.45
1:D:6:ALA:O	1:D:7:ARG:HG3	2.15	0.45
1:A:57:THR:O	1:A:60:ILE:HB	2.17	0.45
1:B:200:HIS:HD2	1:B:203:LYS:HZ3	1.64	0.45
1:C:4:LYS:N	1:D:291:THR:O	2.50	0.45
1:C:227:VAL:HB	1:C:288:ILE:HD13	1.98	0.45
1:B:283:ASP:HA	1:B:284:PRO:C	2.36	0.45
1:C:10:LYS:HD3	1:C:57:THR:HB	1.98	0.45
1:C:84:GLY:HA3	1:C:134:VAL:HG21	1.97	0.45
1:C:174:TRP:CD1	3:C:931:BNZ:C2	2.99	0.45
1:C:231:MET:HE2	1:C:250:TYR:HB2	1.97	0.45
1:C:256:HIS:CE1	1:D:10:LYS:HZ1	2.33	0.45
1:A:146:LEU:HD12	1:A:146:LEU:C	2.37	0.45
1:A:283:ASP:HB2	1:A:284:PRO:HA	1.99	0.45
1:B:111:ILE:CD1	1:D:220:ALA:HB3	2.47	0.45
1:B:153:LYS:HG2	1:B:178:LEU:HB3	1.99	0.45
1:C:6:ALA:HB1	1:C:46:TYR:CZ	2.51	0.45
1:B:216:LEU:HD12	1:B:216:LEU:HA	1.75	0.45
1:D:186:TRP:HB2	1:D:245:ILE:HD12	1.98	0.45
1:A:21:ASP:HB3	1:A:24:THR:HG1	1.82	0.44
1:A:71:ASN:N	1:A:71:ASN:HD22	2.15	0.44
1:A:155:THR:CG2	1:C:27:GLN:NE2	2.80	0.44
1:C:239:LEU:HD21	1:C:245:ILE:HG22	1.99	0.44
1:D:283:ASP:HB2	1:D:284:PRO:HA	2.00	0.44
2:A:999:UNC:N5	2:A:999:UNC:OD1	2.27	0.44
1:A:109:MET:CE	1:C:216:LEU:HD12	2.47	0.44
1:C:125:GLU:O	1:C:127:LYS:HE2	2.18	0.44
1:A:231:MET:HE1	1:A:289:LYS:HA	1.98	0.44
1:C:1:SAC:H2A1	1:C:1:SAC:HA	1.68	0.44
1:D:75:PRO:HB3	1:D:205:ASP:OD1	2.17	0.44
1:D:159:PHE:CE2	1:D:162:PHE:CD1	3.05	0.44
1:C:242:GLN:HG2	1:C:245:ILE:HD13	2.00	0.44

Continued on next page...

Continued from previous page...

Atom-1	Atom-2	Interatomic distance (Å)	Clash overlap (Å)
1:D:214:VAL:O	1:D:214:VAL:HG12	2.17	0.44
1:A:198:ARG:HH11	1:A:198:ARG:CG	2.31	0.44
1:D:85:THR:O	1:D:88:ILE:HG12	2.18	0.44
1:A:220:ALA:HB3	1:C:111:ILE:HD11	1.98	0.44
1:A:20:LYS:HE2	1:A:27:GLN:HE21	1.83	0.43
1:B:33:THR:OG1	1:B:104:HIS:HE1	2.01	0.43
1:C:104:HIS:CD2	1:C:127:LYS:NZ	2.78	0.43
1:D:128:ARG:HD2	1:D:208:TRP:CD1	2.53	0.43
1:D:165:ASP:OD2	1:D:167:TYR:HD2	2.00	0.43
1:D:102:VAL:HA	1:D:129:ASN:HD22	1.82	0.43
1:B:235:ALA:CB	1:B:292:VAL:HG21	2.48	0.43
1:A:189:LYS:HA	1:A:246:GLU:HG3	2.00	0.43
1:A:220:ALA:HB2	1:C:109:MET:CE	2.47	0.43
1:B:32:MET:CE	1:B:73:VAL:HB	2.47	0.43
1:A:226:SER:HB2	1:A:228:GLN:NE2	2.33	0.43
1:B:42:ILE:O	1:B:45:SER:OG	2.29	0.43
1:B:86:HIS:CD2	1:B:86:HIS:C	2.91	0.43
1:B:155:THR:HG22	1:D:27:GLN:NE2	2.32	0.43
1:B:195:GLN:NE2	1:B:195:GLN:HA	2.30	0.43
1:C:116:HIS:ND1	1:C:117:PRO:CD	2.82	0.43
1:D:242:GLN:HG2	1:D:245:ILE:HG12	2.00	0.43
1:D:200:HIS:O	1:D:203:LYS:HB2	2.19	0.43
1:D:224:SER:HB2	1:D:230:THR:OG1	2.18	0.43
1:A:101:ILE:HB	1:A:130:VAL:HG22	1.99	0.43
1:C:4:LYS:HG3	1:D:293:GLY:HA3	2.01	0.43
1:A:78:LEU:O	1:A:81:SER:HB2	2.18	0.43
1:A:201:VAL:HG12	1:A:202:PRO:N	2.33	0.43
1:C:44:THR:HA	1:C:47:THR:OG1	2.19	0.43
1:C:7:ARG:HH11	1:C:7:ARG:CG	2.10	0.42
1:C:178:LEU:HD11	1:C:227:VAL:HG22	2.01	0.42
1:D:20:LYS:HD3	1:D:27:GLN:OE1	2.19	0.42
1:A:149:LEU:HB3	1:A:182:VAL:HB	2.01	0.42
1:C:42:ILE:O	1:C:45:SER:OG	2.29	0.42
1:C:158:GLN:HB3	1:C:174:TRP:HA	2.01	0.42
1:D:104:HIS:CD2	1:D:127:LYS:HZ2	2.37	0.42
1:A:178:LEU:HA	4:A:1003:HOH:O	2.20	0.42
1:C:200:HIS:HD2	1:C:203:LYS:HZ1	1.66	0.42
1:C:226:SER:HB2	1:C:228:GLN:HE21	1.77	0.42
1:C:294:ARG:CG	1:C:294:ARG:NH1	2.75	0.42
1:C:174:TRP:CE2	3:C:931:BNZ:C4	3.03	0.42
1:D:294:ARG:HH11	1:D:294:ARG:CB	2.32	0.42

Continued on next page...

Continued from previous page...

Atom-1	Atom-2	Interatomic distance (Å)	Clash overlap (Å)
1:A:7:ARG:NH2	1:A:98:HIS:CD2	2.87	0.42
1:A:36:VAL:HG22	1:A:99:VAL:HG22	2.01	0.42
1:A:53:VAL:O	1:A:93:HIS:NE2	2.47	0.42
1:B:200:HIS:O	1:B:203:LYS:HB2	2.20	0.42
1:C:32:MET:CE	1:C:73:VAL:HB	2.49	0.42
1:D:187:GLN:HB3	1:D:247:THR:HG23	2.00	0.42
1:B:153:LYS:HB2	1:B:153:LYS:HE2	1.65	0.42
1:A:16:TYR:CE1	1:C:177:ILE:HD11	2.55	0.42
1:B:210:THR:HG22	1:B:211:ALA:N	2.35	0.42
1:B:276:GLU:O	1:D:17:LYS:HA	2.20	0.42
1:C:11:ASP:HA	1:C:35:CYS:HB2	2.00	0.42
1:D:116:HIS:HE1	1:D:118:HIS:CE1	2.37	0.42
1:D:217:LYS:HE3	1:D:221:GLU:OE2	2.19	0.42
1:D:242:GLN:HG3	1:D:245:ILE:HG12	1.99	0.42
1:A:104:HIS:HD2	1:A:127:LYS:NZ	2.18	0.42
1:A:241:ARG:NH1	1:A:241:ARG:HG3	2.34	0.42
1:D:71:ASN:HB3	1:D:72:PRO:CD	2.50	0.42
1:A:114:LYS:HA	1:A:115:PRO:HD3	1.83	0.42
1:B:91:TYR:HB2	1:B:94:ILE:HB	2.02	0.42
1:C:227:VAL:HG11	1:C:288:ILE:HD12	2.00	0.42
1:D:159:PHE:HB2	1:D:176:ARG:CZ	2.50	0.42
1:D:198:ARG:HA	1:D:201:VAL:HG23	2.02	0.42
1:B:233:LYS:O	1:B:237:GLN:HG3	2.20	0.42
1:C:174:TRP:NE1	3:C:931:BNZ:C3	2.83	0.42
1:C:50:ASP:OD1	1:C:52:SER:HB3	2.20	0.41
1:A:180:THR:OG1	1:A:181:ASP:N	2.53	0.41
1:B:105:ARG:HH21	1:B:123:ASP:CG	2.23	0.41
1:C:160:TRP:CD1	1:C:174:TRP:NE1	2.88	0.41
1:A:9:GLY:HA3	1:A:36:VAL:O	2.21	0.41
1:A:70:GLN:HE21	1:C:268:LEU:HD21	1.85	0.41
1:B:213:GLU:O	1:B:217:LYS:HB2	2.20	0.41
1:B:254:ASN:N	1:B:286:GLY:O	2.42	0.41
1:C:6:ALA:HB1	1:C:46:TYR:OH	2.20	0.41
1:D:17:LYS:NZ	1:D:71:ASN:O	2.52	0.41
1:D:189:LYS:HB3	1:D:189:LYS:HE2	1.55	0.41
1:A:189:LYS:O	1:A:191:PHE:CD2	2.74	0.41
1:B:189:LYS:O	1:B:189:LYS:HG3	2.19	0.41
1:C:86:HIS:CD2	1:C:86:HIS:C	2.94	0.41
1:C:252:LEU:HA	1:C:253:PRO:HD2	1.92	0.41
1:B:106:TRP:HA	1:B:106:TRP:CE3	2.55	0.41
1:B:188:TRP:CE3	1:B:244:LEU:HB3	2.55	0.41

Continued on next page...

Continued from previous page...

Atom-1	Atom-2	Interatomic distance (Å)	Clash overlap (Å)
1:C:66:ILE:O	1:C:69:LYS:HB3	2.20	0.41
1:D:201:VAL:N	1:D:202:PRO:CD	2.83	0.41
1:A:4:LYS:HB3	1:A:4:LYS:HE2	1.63	0.41
1:C:13:VAL:HG22	1:D:284:PRO:HB3	2.03	0.41
1:C:201:VAL:HA	1:C:204:PHE:CD2	2.56	0.41
1:D:203:LYS:O	1:D:207:THR:OG1	2.37	0.41
1:A:45:SER:OG	1:A:54:ILE:HD11	2.21	0.41
1:A:142:ILE:O	1:A:188:TRP:HD1	2.04	0.41
1:A:238:ILE:CG2	1:A:248:VAL:HG21	2.50	0.41
1:C:95:HIS:ND1	1:C:136:GLU:OE2	2.46	0.41
1:A:7:ARG:NH2	1:A:98:HIS:CG	2.89	0.41
1:A:138:LYS:O	1:A:139:GLY:O	2.39	0.41
1:A:153:LYS:HA	1:C:118:HIS:O	2.21	0.41
1:B:7:ARG:NH2	1:B:98:HIS:CD2	2.89	0.41
1:B:154:SER:OG	1:D:27:GLN:NE2	2.54	0.41
1:C:4:LYS:HG3	1:D:293:GLY:CA	2.50	0.41
1:C:234:MET:O	1:C:238:ILE:HG13	2.20	0.41
1:D:16:TYR:CD1	1:D:16:TYR:C	2.94	0.41
1:A:21:ASP:O	1:A:25:GLY:N	2.53	0.41
1:A:179:SER:N	4:A:1003:HOH:O	2.30	0.41
1:B:66:ILE:HG13	1:D:262:LEU:HD22	2.02	0.41
1:C:4:LYS:HE2	1:C:4:LYS:HB3	1.62	0.41
1:C:244:LEU:HD13	1:C:244:LEU:HA	1.81	0.41
1:B:167:TYR:CE1	1:C:265:HIS:CE1	3.09	0.40
1:B:228:GLN:N	1:B:228:GLN:NE2	2.29	0.40
1:D:33:THR:OG1	1:D:104:HIS:HE1	2.03	0.40
1:A:68:ALA:HA	1:A:79:PHE:CE1	2.52	0.40
1:B:135:VAL:HB	1:B:138:LYS:HB2	2.04	0.40
1:C:104:HIS:CD2	1:C:127:LYS:HZ2	2.34	0.40
1:A:135:VAL:HB	1:A:138:LYS:HB2	2.03	0.40
1:A:139:GLY:HA3	1:A:191:PHE:O	2.22	0.40
1:B:188:TRP:HE3	1:B:244:LEU:HB3	1.86	0.40
1:C:7:ARG:HA	1:C:38:LEU:O	2.20	0.40
1:A:16:TYR:CE1	1:C:177:ILE:CD1	3.04	0.40
1:A:71:ASN:N	1:A:71:ASN:ND2	2.69	0.40
1:B:92:ASN:O	1:B:95:HIS:CE1	2.75	0.40
1:B:158:GLN:HG2	1:B:174:TRP:HA	2.02	0.40
1:A:254:ASN:N	1:A:286:GLY:O	2.41	0.40

There are no symmetry-related clashes.

5.3 Torsion angles [i](#)

5.3.1 Protein backbone [i](#)

In the following table, the Percentiles column shows the percent Ramachandran outliers of the chain as a percentile score with respect to all X-ray entries followed by that with respect to entries of similar resolution.

The Analysed column shows the number of residues for which the backbone conformation was analysed, and the total number of residues.

Mol	Chain	Analysed	Favoured	Allowed	Outliers	Percentiles	
1	A	293/301 (97%)	267 (91%)	21 (7%)	5 (2%)	9	29
1	B	293/301 (97%)	263 (90%)	29 (10%)	1 (0%)	41	72
1	C	293/301 (97%)	273 (93%)	18 (6%)	2 (1%)	22	53
1	D	293/301 (97%)	270 (92%)	20 (7%)	3 (1%)	15	44
All	All	1172/1204 (97%)	1073 (92%)	88 (8%)	11 (1%)	17	46

All (11) Ramachandran outliers are listed below:

Mol	Chain	Res	Type
1	C	23	LYS
1	D	23	LYS
1	A	139	GLY
1	D	226	SER
1	A	23	LYS
1	D	124	SER
1	A	201	VAL
1	A	204	PHE
1	C	124	SER
1	B	290	CYS
1	A	26	VAL

5.3.2 Protein sidechains [i](#)

In the following table, the Percentiles column shows the percent sidechain outliers of the chain as a percentile score with respect to all X-ray entries followed by that with respect to entries of similar resolution.

The Analysed column shows the number of residues for which the sidechain conformation was analysed, and the total number of residues.

Mol	Chain	Analysed	Rotameric	Outliers	Percentiles	
1	A	257/266 (97%)	232 (90%)	25 (10%)	8	24
1	B	259/266 (97%)	231 (89%)	28 (11%)	6	19
1	C	260/266 (98%)	234 (90%)	26 (10%)	7	22
1	D	260/266 (98%)	233 (90%)	27 (10%)	7	21
All	All	1036/1064 (97%)	930 (90%)	106 (10%)	7	22

All (106) residues with a non-rotameric sidechain are listed below:

Mol	Chain	Res	Type
1	A	4	LYS
1	A	16	TYR
1	A	17	LYS
1	A	34	VAL
1	A	35	CYS
1	A	44	THR
1	A	45	SER
1	A	48	LYS
1	A	54	ILE
1	A	129	ASN
1	A	154	SER
1	A	158	GLN
1	A	183	ASP
1	A	187	GLN
1	A	189	LYS
1	A	194	LEU
1	A	195	GLN
1	A	216	LEU
1	A	228	GLN
1	A	241	ARG
1	A	244	LEU
1	A	273	LYS
1	A	289	LYS
1	A	290	CYS
1	A	294	ARG
1	B	15	VAL
1	B	23	LYS
1	B	35	CYS
1	B	44	THR
1	B	48	LYS
1	B	53	VAL
1	B	71	ASN
1	B	83	LEU

Continued on next page...

Continued from previous page...

Mol	Chain	Res	Type
1	B	93	HIS
1	B	100	ASN
1	B	111	ILE
1	B	114	LYS
1	B	129	ASN
1	B	173	THR
1	B	194	LEU
1	B	195	GLN
1	B	210	THR
1	B	216	LEU
1	B	217	LYS
1	B	228	GLN
1	B	238	ILE
1	B	241	ARG
1	B	244	LEU
1	B	245	ILE
1	B	268	LEU
1	B	273	LYS
1	B	290	CYS
1	B	294	ARG
1	C	4	LYS
1	C	7	ARG
1	C	22	GLU
1	C	23	LYS
1	C	35	CYS
1	C	36	VAL
1	C	37	LEU
1	C	109	MET
1	C	129	ASN
1	C	131	GLN
1	C	143	LYS
1	C	155	THR
1	C	158	GLN
1	C	192	SER
1	C	194	LEU
1	C	216	LEU
1	C	217	LYS
1	C	228	GLN
1	C	241	ARG
1	C	243	GLN
1	C	244	LEU
1	C	268	LEU

Continued on next page...

Continued from previous page...

Mol	Chain	Res	Type
1	C	271	THR
1	C	273	LYS
1	C	283	ASP
1	C	290	CYS
1	D	4	LYS
1	D	24	THR
1	D	35	CYS
1	D	42	ILE
1	D	53	VAL
1	D	74	THR
1	D	90	LYS
1	D	94	ILE
1	D	106	TRP
1	D	114	LYS
1	D	125	GLU
1	D	130	VAL
1	D	138	LYS
1	D	153	LYS
1	D	154	SER
1	D	158	GLN
1	D	183	ASP
1	D	189	LYS
1	D	199	SER
1	D	224	SER
1	D	241	ARG
1	D	243	GLN
1	D	244	LEU
1	D	254	ASN
1	D	268	LEU
1	D	283	ASP
1	D	294	ARG

Sometimes sidechains can be flipped to improve hydrogen bonding and reduce clashes. All (24) such sidechains are listed below:

Mol	Chain	Res	Type
1	A	71	ASN
1	A	86	HIS
1	A	104	HIS
1	A	129	ASN
1	A	228	GLN
1	A	254	ASN
1	B	71	ASN

Continued on next page...

Continued from previous page...

Mol	Chain	Res	Type
1	B	86	HIS
1	B	100	ASN
1	B	104	HIS
1	B	129	ASN
1	B	195	GLN
1	B	200	HIS
1	B	228	GLN
1	B	237	GLN
1	C	86	HIS
1	C	104	HIS
1	C	129	ASN
1	C	200	HIS
1	C	228	GLN
1	D	27	GLN
1	D	104	HIS
1	D	129	ASN
1	D	156	ASN

5.3.3 RNA [i](#)

There are no RNA molecules in this entry.

5.4 Non-standard residues in protein, DNA, RNA chains [i](#)

4 non-standard protein/DNA/RNA residues are modelled in this entry.

In the following table, the Counts columns list the number of bonds (or angles) for which Mogul statistics could be retrieved, the number of bonds (or angles) that are observed in the model and the number of bonds (or angles) that are defined in the Chemical Component Dictionary. The Link column lists molecule types, if any, to which the group is linked. The Z score for a bond length (or angle) is the number of standard deviations the observed value is removed from the expected value. A bond length (or angle) with $|Z| > 2$ is considered an outlier worth inspection. RMSZ is the root-mean-square of all Z scores of the bond lengths (or angles).

Mol	Type	Chain	Res	Link	Bond lengths			Bond angles		
					Counts	RMSZ	$\# Z > 2$	Counts	RMSZ	$\# Z > 2$
1	SAC	D	1	1	4,5,9	0.66	0	0,5,11	-	-
1	SAC	A	1	1	5,6,9	1.39	1 (20%)	4,6,11	1.69	2 (50%)
1	SAC	B	1	1	4,5,9	0.51	0	0,5,11	-	-
1	SAC	C	1	1	7,8,9	0.89	0	8,9,11	1.35	2 (25%)

In the following table, the Chirals column lists the number of chiral outliers, the number of chiral

centers analysed, the number of these observed in the model and the number defined in the Chemical Component Dictionary. Similar counts are reported in the Torsion and Rings columns. '-' means no outliers of that kind were identified.

Mol	Type	Chain	Res	Link	Chirals	Torsions	Rings
1	SAC	D	1	1	-	1/2/4/10	-
1	SAC	A	1	1	-	2/3/6/10	-
1	SAC	B	1	1	-	0/2/4/10	-
1	SAC	C	1	1	-	2/7/8/10	-

All (1) bond length outliers are listed below:

Mol	Chain	Res	Type	Atoms	Z	Observed(Å)	Ideal(Å)
1	A	1	SAC	C1A-N	-2.87	1.39	1.46

All (4) bond angle outliers are listed below:

Mol	Chain	Res	Type	Atoms	Z	Observed(°)	Ideal(°)
1	A	1	SAC	C1A-N-CA	2.50	121.43	113.64
1	C	1	SAC	O-C-CA	-2.35	118.62	124.78
1	A	1	SAC	O-C-CA	-2.24	118.90	124.78
1	C	1	SAC	OAC-C1A-N	-2.07	118.14	121.95

There are no chirality outliers.

All (5) torsion outliers are listed below:

Mol	Chain	Res	Type	Atoms
1	A	1	SAC	N-CA-CB-OG
1	A	1	SAC	C-CA-CB-OG
1	C	1	SAC	C2A-C1A-N-CA
1	C	1	SAC	OAC-C1A-N-CA
1	D	1	SAC	C-CA-CB-OG

There are no ring outliers.

1 monomer is involved in 7 short contacts:

Mol	Chain	Res	Type	Clashes	Symm-Clashes
1	C	1	SAC	7	0

5.5 Carbohydrates [i](#)

There are no monosaccharides in this entry.

5.6 Ligand geometry

5 ligands are modelled in this entry.

In the following table, the Counts columns list the number of bonds (or angles) for which Mogul statistics could be retrieved, the number of bonds (or angles) that are observed in the model and the number of bonds (or angles) that are defined in the Chemical Component Dictionary. The Link column lists molecule types, if any, to which the group is linked. The Z score for a bond length (or angle) is the number of standard deviations the observed value is removed from the expected value. A bond length (or angle) with $|Z| > 2$ is considered an outlier worth inspection. RMSZ is the root-mean-square of all Z scores of the bond lengths (or angles).

Mol	Type	Chain	Res	Link	Bond lengths			Bond angles		
					Counts	RMSZ	# Z > 2	Counts	RMSZ	# Z > 2
2	UNC	A	999	-	9,12,12	5.05	6 (66%)	4,17,17	7.78	2 (50%)
2	UNC	C	2999	-	9,12,12	5.07	5 (55%)	4,17,17	7.67	2 (50%)
2	UNC	B	1999	-	9,12,12	4.96	5 (55%)	4,17,17	7.85	2 (50%)
3	BNZ	C	931	-	6,6,6	0.58	0	6,6,6	0.14	0
2	UNC	D	3999	-	9,12,12	4.46	6 (66%)	4,17,17	8.38	2 (50%)

In the following table, the Chirals column lists the number of chiral outliers, the number of chiral centers analysed, the number of these observed in the model and the number defined in the Chemical Component Dictionary. Similar counts are reported in the Torsion and Rings columns. '-' means no outliers of that kind were identified.

Mol	Type	Chain	Res	Link	Chirals	Torsions	Rings
2	UNC	A	999	-	-	0/1/4/4	0/1/1/1
2	UNC	C	2999	-	-	0/1/4/4	0/1/1/1
2	UNC	B	1999	-	-	0/1/4/4	0/1/1/1
3	BNZ	C	931	-	-	-	0/1/1/1
2	UNC	D	3999	-	-	0/1/4/4	0/1/1/1

All (22) bond length outliers are listed below:

Mol	Chain	Res	Type	Atoms	Z	Observed(Å)	Ideal(Å)
2	B	1999	UNC	C4-N3	11.98	1.40	1.31
2	A	999	UNC	C4-N3	10.71	1.39	1.31
2	C	2999	UNC	C4-N3	9.64	1.38	1.31
2	D	3999	UNC	C4-N3	9.32	1.38	1.31
2	C	2999	UNC	C5-C6	7.57	1.51	1.41
2	A	999	UNC	C5-C6	6.36	1.50	1.41
2	C	2999	UNC	C6-N1	6.32	1.44	1.33
2	A	999	UNC	C6-N1	5.88	1.43	1.33
2	D	3999	UNC	C6-N1	5.44	1.42	1.33

Continued on next page...

Continued from previous page...

Mol	Chain	Res	Type	Atoms	Z	Observed(Å)	Ideal(Å)
2	B	1999	UNC	C6-N1	5.33	1.42	1.33
2	D	3999	UNC	C5-C6	5.27	1.48	1.41
2	A	999	UNC	C2-N3	5.23	1.48	1.38
2	C	2999	UNC	C2-N3	5.22	1.48	1.38
2	B	1999	UNC	C2-N3	4.84	1.47	1.38
2	D	3999	UNC	C2-N3	4.38	1.46	1.38
2	B	1999	UNC	C5-C6	3.99	1.46	1.41
2	C	2999	UNC	C2-N1	2.90	1.43	1.38
2	A	999	UNC	C2-N1	2.37	1.42	1.38
2	D	3999	UNC	OD2-N4	2.35	1.26	1.22
2	B	1999	UNC	C2-N1	2.21	1.42	1.38
2	A	999	UNC	C5-N5	-2.19	1.30	1.36
2	D	3999	UNC	C2-N1	2.02	1.42	1.38

All (8) bond angle outliers are listed below:

Mol	Chain	Res	Type	Atoms	Z	Observed(°)	Ideal(°)
2	D	3999	UNC	C2-N1-C6	16.16	128.79	115.14
2	B	1999	UNC	C2-N1-C6	14.92	127.74	115.14
2	A	999	UNC	C2-N1-C6	14.72	127.57	115.14
2	C	2999	UNC	C2-N1-C6	14.68	127.53	115.14
2	A	999	UNC	C4-C5-C6	4.91	118.45	113.90
2	B	1999	UNC	C4-C5-C6	4.70	118.26	113.90
2	D	3999	UNC	C4-C5-C6	4.31	117.90	113.90
2	C	2999	UNC	C4-C5-C6	4.21	117.81	113.90

There are no chirality outliers.

There are no torsion outliers.

There are no ring outliers.

5 monomers are involved in 26 short contacts:

Mol	Chain	Res	Type	Clashes	Symm-Clashes
2	A	999	UNC	7	0
2	C	2999	UNC	6	0
2	B	1999	UNC	6	0
3	C	931	BNZ	3	0
2	D	3999	UNC	4	0

5.7 Other polymers [i](#)

There are no such residues in this entry.

5.8 Polymer linkage issues [i](#)

There are no chain breaks in this entry.

6 Fit of model and data [i](#)

6.1 Protein, DNA and RNA chains [i](#)

In the following table, the column labelled ‘#RSRZ> 2’ contains the number (and percentage) of RSRZ outliers, followed by percent RSRZ outliers for the chain as percentile scores relative to all X-ray entries and entries of similar resolution. The OWAB column contains the minimum, median, 95th percentile and maximum values of the occupancy-weighted average B-factor per residue. The column labelled ‘Q< 0.9’ lists the number of (and percentage) of residues with an average occupancy less than 0.9.

Mol	Chain	Analysed	<RSRZ>	#RSRZ>2	OWAB(Å ²)	Q<0.9
1	A	294/301 (97%)	-0.39	3 (1%) 82 77	22, 48, 72, 93	0
1	B	294/301 (97%)	-0.37	4 (1%) 75 70	20, 48, 75, 97	0
1	C	294/301 (97%)	-0.41	2 (0%) 87 84	17, 42, 70, 91	0
1	D	294/301 (97%)	-0.44	0 100 100	16, 46, 71, 91	0
All	All	1176/1204 (97%)	-0.40	9 (0%) 86 81	16, 46, 73, 97	0

All (9) RSRZ outliers are listed below:

Mol	Chain	Res	Type	RSRZ
1	B	23	LYS	2.9
1	A	135	VAL	2.6
1	B	243	GLN	2.4
1	B	22	GLU	2.4
1	A	137	GLY	2.3
1	A	232	TYR	2.2
1	C	52	SER	2.2
1	B	21	ASP	2.1
1	C	53	VAL	2.1

6.2 Non-standard residues in protein, DNA, RNA chains [i](#)

In the following table, the Atoms column lists the number of modelled atoms in the group and the number defined in the chemical component dictionary. The B-factors column lists the minimum, median, 95th percentile and maximum values of B factors of atoms in the group. The column labelled ‘Q< 0.9’ lists the number of atoms with occupancy less than 0.9.

Mol	Type	Chain	Res	Atoms	RSCC	RSR	B-factors(Å ²)	Q<0.9
1	SAC	B	1	6/10	0.83	0.36	75,76,77,81	0
1	SAC	C	1	9/10	0.87	0.28	65,66,69,73	0
1	SAC	D	1	6/10	0.92	0.10	56,56,58,58	0

Continued on next page...

Continued from previous page...

Mol	Type	Chain	Res	Atoms	RSCC	RSR	B-factors(\AA^2)	Q<0.9
1	SAC	A	1	7/10	0.96	0.26	61,62,64,64	0

6.3 Carbohydrates [i](#)

There are no monosaccharides in this entry.

6.4 Ligands [i](#)

In the following table, the Atoms column lists the number of modelled atoms in the group and the number defined in the chemical component dictionary. The B-factors column lists the minimum, median, 95th percentile and maximum values of B factors of atoms in the group. The column labelled 'Q< 0.9' lists the number of atoms with occupancy less than 0.9.

Mol	Type	Chain	Res	Atoms	RSCC	RSR	B-factors(\AA^2)	Q<0.9
3	BNZ	C	931	6/6	0.85	0.18	41,41,41,41	6
2	UNC	C	2999	12/12	0.91	0.32	31,33,37,38	0
2	UNC	D	3999	12/12	0.92	0.17	34,35,38,39	0
2	UNC	B	1999	12/12	0.93	0.18	29,32,36,38	0
2	UNC	A	999	12/12	0.93	0.21	37,38,41,42	0

6.5 Other polymers [i](#)

There are no such residues in this entry.