



Full wwPDB X-ray Structure Validation Report ⓘ

Dec 17, 2023 – 11:00 pm GMT

PDB ID : 2XUG
Title : Crystal structure of mAChE-Y337A-TZ2PA6 anti complex (1 wk)
Authors : Bourne, Y.; Radic, Z.; Taylor, P.; Marchot, P.
Deposited on : 2010-10-19
Resolution : 2.60 Å(reported)

This is a Full wwPDB X-ray Structure Validation Report for a publicly released PDB entry.

We welcome your comments at validation@mail.wwpdb.org

A user guide is available at

<https://www.wwpdb.org/validation/2017/XrayValidationReportHelp>

with specific help available everywhere you see the ⓘ symbol.

The types of validation reports are described at

<http://www.wwpdb.org/validation/2017/FAQs#types>.

The following versions of software and data (see [references ⓘ](#)) were used in the production of this report:

MolProbity : 4.02b-467
Mogul : 1.8.4, CSD as541be (2020)
Xtriage (Phenix) : 1.13
EDS : 2.36
buster-report : 1.1.7 (2018)
Percentile statistics : 20191225.v01 (using entries in the PDB archive December 25th 2019)
Refmac : 5.8.0158
CCP4 : 7.0.044 (Gargrove)
Ideal geometry (proteins) : Engh & Huber (2001)
Ideal geometry (DNA, RNA) : Parkinson et al. (1996)
Validation Pipeline (wwPDB-VP) : 2.36

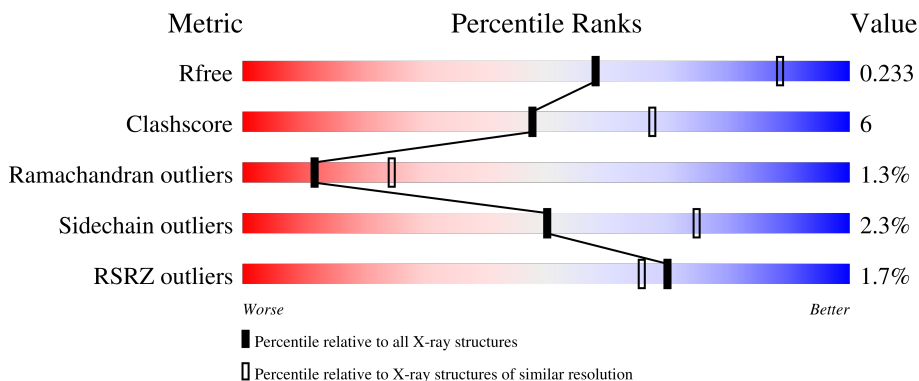
1 Overall quality at a glance

The following experimental techniques were used to determine the structure:

X-RAY DIFFRACTION

The reported resolution of this entry is 2.60 Å.

Percentile scores (ranging between 0-100) for global validation metrics of the entry are shown in the following graphic. The table shows the number of entries on which the scores are based.



Metric	Whole archive (#Entries)	Similar resolution (#Entries, resolution range(Å))
R_{free}	130704	3163 (2.60-2.60)
Clashscore	141614	3518 (2.60-2.60)
Ramachandran outliers	138981	3455 (2.60-2.60)
Sidechain outliers	138945	3455 (2.60-2.60)
RSRZ outliers	127900	3104 (2.60-2.60)

The table below summarises the geometric issues observed across the polymeric chains and their fit to the electron density. The red, orange, yellow and green segments of the lower bar indicate the fraction of residues that contain outliers for ≥ 3 , 2, 1 and 0 types of geometric quality criteria respectively. A grey segment represents the fraction of residues that are not modelled. The numeric value for each fraction is indicated below the corresponding segment, with a dot representing fractions $\leq 5\%$. The upper red bar (where present) indicates the fraction of residues that have poor fit to the electron density. The numeric value is given above the bar.

Mol	Chain	Length	Quality of chain
1	A	544	 % 85% 12% ...
1	B	544	 2% 88% 9% ..

2 Entry composition [i](#)

There are 5 unique types of molecules in this entry. The entry contains 8805 atoms, of which 0 are hydrogens and 0 are deuteriums.

In the tables below, the ZeroOcc column contains the number of atoms modelled with zero occupancy, the AltConf column contains the number of residues with at least one atom in alternate conformation and the Trace column contains the number of residues modelled with at most 2 atoms.

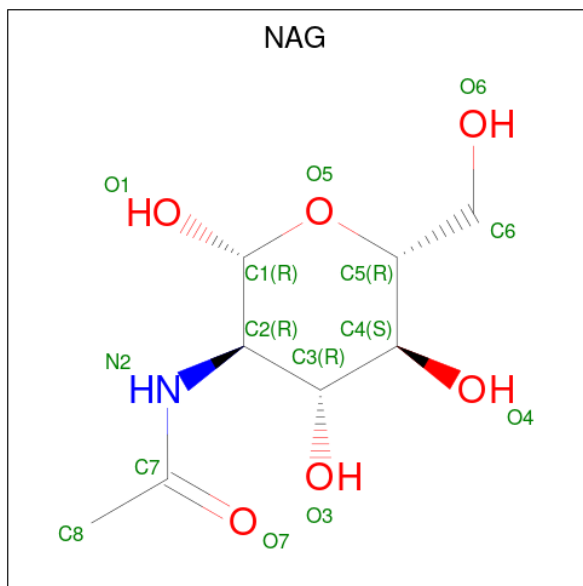
- Molecule 1 is a protein called ACETYLCHOLINESTERASE.

Mol	Chain	Residues	Atoms					ZeroOcc	AltConf	Trace
			Total	C	N	O	S			
1	A	535	4196	2691	731	760	14	0	4	0
1	B	536	4196	2697	724	761	14	0	4	0

There are 4 discrepancies between the modelled and reference sequences:

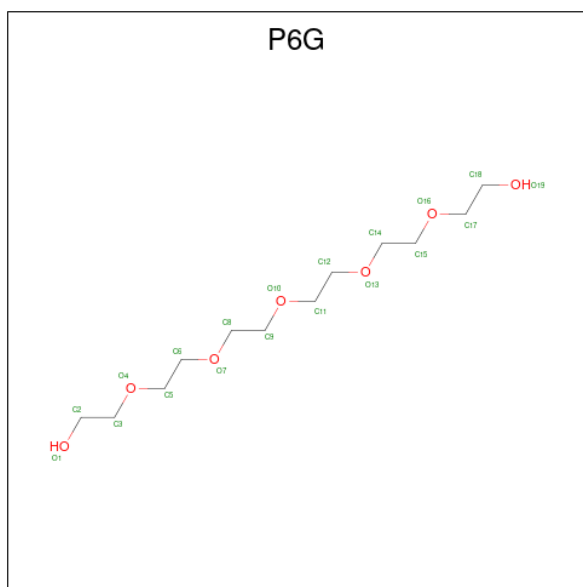
Chain	Residue	Modelled	Actual	Comment	Reference
A	337	ALA	TYR	engineered mutation	UNP P21836
A	544	ALA	LEU	SEE REMARK 999	UNP P21836
B	337	ALA	TYR	engineered mutation	UNP P21836
B	544	ALA	LEU	SEE REMARK 999	UNP P21836

- Molecule 2 is 2-acetamido-2-deoxy-beta-D-glucopyranose (three-letter code: NAG) (formula: $C_8H_{15}NO_6$).



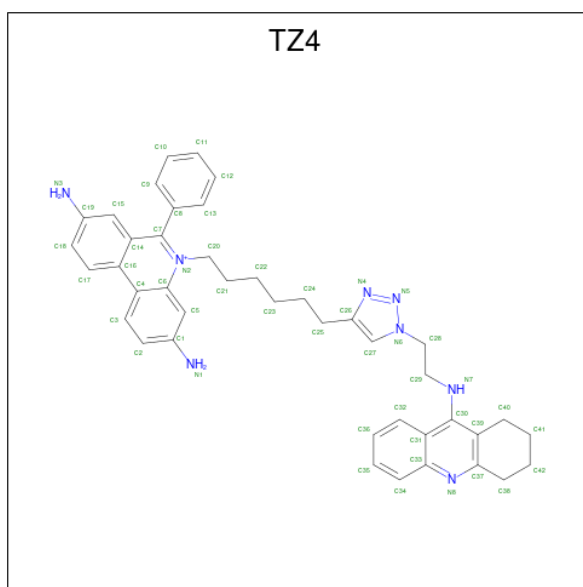
Mol	Chain	Residues	Atoms				ZeroOcc	AltConf
2	A	1	Total	C	N	O	0	0
			14	8	1	5		
2	A	1	Total	C	N	O	0	0
			14	8	1	5		

- Molecule 3 is HEXAETHYLENE GLYCOL (three-letter code: P6G) (formula: $C_{12}H_{26}O_7$).



Mol	Chain	Residues	Atoms			ZeroOcc	AltConf
3	A	1	Total	C	O	0	0
			19	12	7		

- Molecule 4 is 3,8-DIAMINO-6-PHENYL-5-[6-[1-[2-[(1,2,3,4-TETRAHYDRO-9-ACRIDINYL)AMINO]ETHYL]-1H-1,2,3-TRIAZOL-4-YL]HEXYL]-PHENANTHRIDINIUM (three-letter code: TZ4) (formula: $C_{42}H_{45}N_8$).



Mol	Chain	Residues	Atoms	ZeroOcc	AltConf
4	A	1	Total C N 50 42 8	0	0
4	B	1	Total C N 50 42 8	0	0

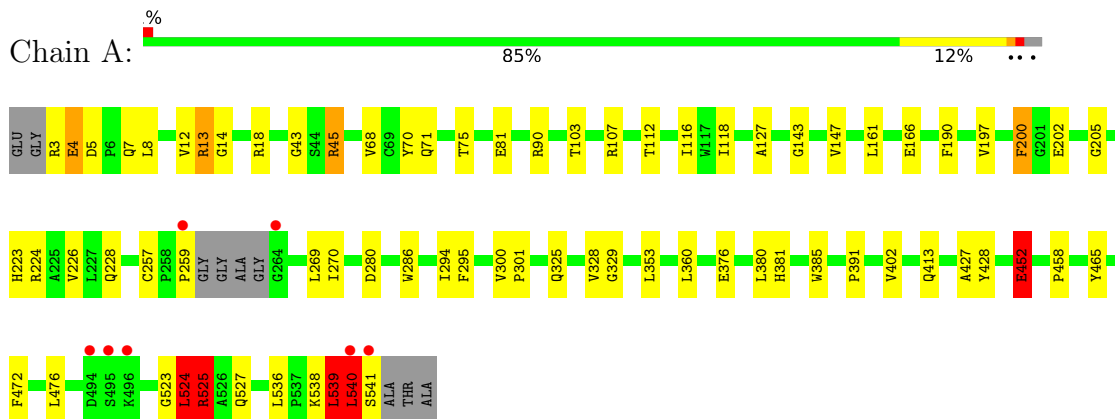
- Molecule 5 is water.

Mol	Chain	Residues	Atoms	ZeroOcc	AltConf
5	A	160	Total O 160 160	0	0
5	B	106	Total O 106 106	0	0

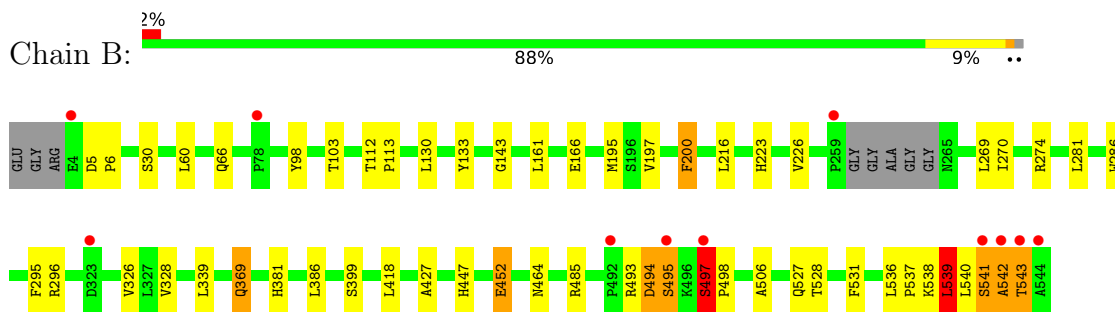
3 Residue-property plots [i](#)

These plots are drawn for all protein, RNA, DNA and oligosaccharide chains in the entry. The first graphic for a chain summarises the proportions of the various outlier classes displayed in the second graphic. The second graphic shows the sequence view annotated by issues in geometry and electron density. Residues are color-coded according to the number of geometric quality criteria for which they contain at least one outlier: green = 0, yellow = 1, orange = 2 and red = 3 or more. A red dot above a residue indicates a poor fit to the electron density ($RSRZ > 2$). Stretches of 2 or more consecutive residues without any outlier are shown as a green connector. Residues present in the sample, but not in the model, are shown in grey.

• Molecule 1: ACETYLCHOLINESTERASE



• Molecule 1: ACETYLCHOLINESTERASE



4 Data and refinement statistics

Property	Value	Source
Space group	P 21 21 21	Depositor
Cell constants a, b, c, α , β , γ	79.46Å 111.70Å 227.46Å 90.00° 90.00° 90.00°	Depositor
Resolution (Å)	20.00 – 2.60 19.92 – 2.60	Depositor EDS
% Data completeness (in resolution range)	97.8 (20.00-2.60) 97.7 (19.92-2.60)	Depositor EDS
R_{merge}	0.09	Depositor
R_{sym}	(Not available)	Depositor
$\langle I/\sigma(I) \rangle$ ¹	3.23 (at 2.59Å)	Xtrriage
Refinement program	REFMAC 5.5.0109	Depositor
R, R_{free}	0.192 , 0.233 0.194 , 0.233	Depositor DCC
R_{free} test set	1250 reflections (2.04%)	wwPDB-VP
Wilson B-factor (Å ²)	54.1	Xtrriage
Anisotropy	0.018	Xtrriage
Bulk solvent k_{sol} (e/Å ³), B_{sol} (Å ²)	0.31 , 39.0	EDS
L-test for twinning ²	$\langle L \rangle = 0.51$, $\langle L^2 \rangle = 0.35$	Xtrriage
Estimated twinning fraction	No twinning to report.	Xtrriage
F_o, F_c correlation	0.95	EDS
Total number of atoms	8805	wwPDB-VP
Average B, all atoms (Å ²)	51.0	wwPDB-VP

Xtrriage's analysis on translational NCS is as follows: *The largest off-origin peak in the Patterson function is 3.17% of the height of the origin peak. No significant pseudotranslation is detected.*

¹Intensities estimated from amplitudes.

²Theoretical values of $\langle |L| \rangle$, $\langle L^2 \rangle$ for acentric reflections are 0.5, 0.333 respectively for untwinned datasets, and 0.375, 0.2 for perfectly twinned datasets.

5 Model quality [i](#)

5.1 Standard geometry [i](#)

Bond lengths and bond angles in the following residue types are not validated in this section: TZ4, NAG, P6G

The Z score for a bond length (or angle) is the number of standard deviations the observed value is removed from the expected value. A bond length (or angle) with $|Z| > 5$ is considered an outlier worth inspection. RMSZ is the root-mean-square of all Z scores of the bond lengths (or angles).

Mol	Chain	Bond lengths		Bond angles	
		RMSZ	# Z >5	RMSZ	# Z >5
1	A	0.63	1/4326 (0.0%)	0.74	4/5912 (0.1%)
1	B	0.59	0/4334	0.67	0/5928
All	All	0.61	1/8660 (0.0%)	0.70	4/11840 (0.0%)

Chiral center outliers are detected by calculating the chiral volume of a chiral center and verifying if the center is modelled as a planar moiety or with the opposite hand. A planarity outlier is detected by checking planarity of atoms in a peptide group, atoms in a mainchain group or atoms of a sidechain that are expected to be planar.

Mol	Chain	#Chirality outliers	#Planarity outliers
1	A	0	5
1	B	0	2
All	All	0	7

All (1) bond length outliers are listed below:

Mol	Chain	Res	Type	Atoms	Z	Observed(Å)	Ideal(Å)
1	A	524	LEU	C-O	5.01	1.32	1.23

All (4) bond angle outliers are listed below:

Mol	Chain	Res	Type	Atoms	Z	Observed(°)	Ideal(°)
1	A	525	ARG	N-CA-C	-11.55	79.81	111.00
1	A	452	GLU	N-CA-CB	-6.18	99.48	110.60
1	A	539	LEU	C-N-CA	5.34	135.04	121.70
1	A	13	ARG	N-CA-C	5.19	125.01	111.00

There are no chirality outliers.

All (7) planarity outliers are listed below:

Mol	Chain	Res	Type	Group
1	A	13	ARG	Peptide
1	A	524	LEU	Mainchain,Peptide
1	A	525	ARG	Peptide
1	A	70	TYR	Peptide
1	B	497	SER	Peptide
1	B	539	LEU	Peptide

5.2 Too-close contacts [i](#)

In the following table, the Non-H and H(model) columns list the number of non-hydrogen atoms and hydrogen atoms in the chain respectively. The H(added) column lists the number of hydrogen atoms added and optimized by MolProbity. The Clashes column lists the number of clashes within the asymmetric unit, whereas Symm-Clashes lists symmetry-related clashes.

Mol	Chain	Non-H	H(model)	H(added)	Clashes	Symm-Clashes
1	A	4196	0	4081	55	0
1	B	4196	0	4083	47	0
2	A	28	0	26	0	0
3	A	19	0	26	5	0
4	A	50	0	45	2	0
4	B	50	0	45	3	0
5	A	160	0	0	2	0
5	B	106	0	0	2	0
All	All	8805	0	8306	103	0

The all-atom clashscore is defined as the number of clashes found per 1000 atoms (including hydrogen atoms). The all-atom clashscore for this structure is 6.

All (103) close contacts within the same asymmetric unit are listed below, sorted by their clash magnitude.

Atom-1	Atom-2	Interatomic distance (Å)	Clash overlap (Å)
1:B:497:SER:HB3	1:B:498:PRO:HA	1.30	1.07
1:A:7:GLN:NE2	1:A:107:ARG:H	1.73	0.84
1:A:3:ARG:HA	1:A:4:GLU:CB	2.07	0.84
1:B:497:SER:HB3	1:B:498:PRO:CA	2.11	0.81
1:B:494:ASP:HA	1:B:495:SER:CB	2.11	0.80
1:A:3:ARG:HA	1:A:4:GLU:HB3	1.66	0.77
1:B:161:LEU:HD11	1:B:269:LEU:HD22	1.69	0.74
1:B:493:ARG:O	1:B:494:ASP:HB3	1.86	0.74
1:B:197:VAL:H	1:B:223:HIS:HD2	1.36	0.73
1:B:539:LEU:HB3	1:B:540:LEU:HB2	1.71	0.72

Continued on next page...

Continued from previous page...

Atom-1	Atom-2	Interatomic distance (Å)	Clash overlap (Å)
1:A:540:LEU:HB3	1:A:541:SER:HB3	1.73	0.70
1:A:197:VAL:H	1:A:223:HIS:HD2	1.41	0.68
1:B:497:SER:CB	1:B:498:PRO:HA	2.17	0.67
1:B:30:SER:HB2	1:B:103:THR:HG22	1.78	0.65
1:B:369:GLN:H	1:B:369:GLN:NE2	1.94	0.65
1:A:540:LEU:H	1:A:541:SER:C	2.00	0.65
1:B:452:GLU:HB2	5:B:2089:HOH:O	1.98	0.62
1:B:537:PRO:O	1:B:541:SER:HB2	1.99	0.61
1:B:494:ASP:CA	1:B:495:SER:CB	2.78	0.60
1:B:369:GLN:HE21	1:B:369:GLN:N	2.00	0.60
1:A:540:LEU:H	1:A:541:SER:CA	2.15	0.60
1:B:30:SER:HB2	1:B:103:THR:CG2	2.32	0.60
1:B:369:GLN:H	1:B:369:GLN:HE21	1.49	0.59
1:A:381:HIS:ND1	3:A:1544:P6G:H22	2.17	0.59
1:A:90:ARG:HD3	5:A:2036:HOH:O	2.03	0.59
1:A:7:GLN:HE21	1:A:107:ARG:H	1.50	0.58
1:A:527:GLN:HG3	3:A:1544:P6G:H181	1.87	0.57
1:A:259:PRO:HA	1:A:269:LEU:HD12	1.86	0.56
1:A:539:LEU:HB3	1:A:540:LEU:HA	1.88	0.56
1:B:112:THR:HG21	1:B:143:GLY:O	2.06	0.55
1:A:353:LEU:HB3	1:A:391:PRO:HB2	1.88	0.55
1:A:5:ASP:HB3	1:A:8:LEU:HD12	1.89	0.54
1:A:4:GLU:OE2	1:A:18:ARG:HD3	2.08	0.53
1:B:447:HIS:HB3	4:B:1545:TZ4:H281	1.91	0.53
1:B:197:VAL:H	1:B:223:HIS:CD2	2.23	0.52
1:A:166:GLU:HB2	1:A:270:ILE:HD13	1.91	0.52
1:B:326:VAL:HG21	1:B:418:LEU:HD13	1.90	0.52
1:A:197:VAL:H	1:A:223:HIS:CD2	2.26	0.52
1:A:385:TRP:HD1	1:B:527:GLN:OE1	1.93	0.52
1:A:360:LEU:HD12	1:A:360:LEU:O	2.10	0.51
1:B:113:PRO:HG2	1:B:485:ARG:HG3	1.92	0.51
1:A:161:LEU:HD12	1:A:270:ILE:HD11	1.91	0.51
1:A:200:PHE:CB	1:A:226:VAL:HB	2.41	0.51
1:A:3:ARG:HA	1:A:4:GLU:HB2	1.88	0.51
1:B:543:THR:HG23	1:B:543:THR:O	2.11	0.51
3:A:1544:P6G:H152	1:B:381:HIS:HA	1.93	0.50
1:B:166:GLU:HB2	1:B:274:ARG:HH22	1.77	0.50
1:B:328:VAL:O	1:B:427:ALA:HA	2.11	0.50
1:A:286:TRP:HB2	4:A:1545:TZ4:C3	2.42	0.50
1:A:539:LEU:HB3	1:A:540:LEU:CA	2.42	0.50
1:B:464:ASN:ND2	5:B:2092:HOH:O	2.40	0.50

Continued on next page...

Continued from previous page...

Atom-1	Atom-2	Interatomic distance (Å)	Clash overlap (Å)
1:B:537:PRO:O	1:B:541:SER:CB	2.60	0.50
1:B:493:ARG:O	1:B:494:ASP:CB	2.58	0.49
1:A:257:CYS:O	1:A:259:PRO:HD3	2.13	0.49
1:B:497:SER:CB	1:B:498:PRO:CA	2.82	0.49
1:B:66:GLN:HG3	1:B:98:TYR:CD2	2.46	0.49
1:A:224:ARG:HG2	1:A:325:GLN:HB2	1.96	0.48
1:A:539:LEU:HB3	1:A:540:LEU:HB2	1.93	0.48
1:A:112:THR:HG21	1:A:143:GLY:O	2.14	0.47
1:B:200:PHE:CB	1:B:226:VAL:HB	2.44	0.47
1:A:381:HIS:HA	3:A:1544:P6G:H31	1.96	0.47
1:B:161:LEU:HD12	1:B:270:ILE:HD11	1.97	0.46
1:A:329:GLY:HA3	1:A:428:TYR:CE2	2.51	0.46
1:B:66:GLN:HG2	1:B:98:TYR:CD1	2.51	0.46
1:B:528:THR:O	1:B:531:PHE:HB3	2.16	0.45
1:A:538:LYS:O	1:A:539:LEU:O	2.33	0.45
1:B:66:GLN:HG2	1:B:98:TYR:CG	2.51	0.45
1:A:43:GLY:C	1:A:45:ARG:H	2.20	0.45
1:A:540:LEU:O	1:A:540:LEU:HD12	2.17	0.45
1:B:536:LEU:HD12	1:B:539:LEU:HD12	1.98	0.45
1:A:12:VAL:HG23	1:A:14:GLY:HA3	1.99	0.45
1:A:376:GLU:O	1:A:380:LEU:HG	2.17	0.44
1:A:200:PHE:HB2	1:A:226:VAL:HB	1.98	0.44
1:A:452:GLU:HB2	5:A:2140:HOH:O	2.17	0.44
1:A:536:LEU:O	1:A:540:LEU:HB2	2.17	0.44
1:A:161:LEU:HD11	1:A:269:LEU:HD22	2.00	0.44
1:A:527:GLN:HE21	3:A:1544:P6G:H181	1.83	0.44
1:A:118:ILE:O	1:A:205:GLY:HA3	2.18	0.43
1:B:286[A]:TRP:CZ3	4:B:1545:TZ4:H201	2.53	0.43
1:A:458:PRO:HA	1:A:465:TYR:CD2	2.54	0.43
4:B:1545:TZ4:H252	4:B:1545:TZ4:H421	2.01	0.43
1:A:472:PHE:CZ	1:A:476:LEU:HD11	2.54	0.43
1:B:296:ARG:HH21	1:B:369:GLN:HE22	1.65	0.43
1:A:3:ARG:CA	1:A:4:GLU:CB	2.86	0.42
1:B:130:LEU:HD12	1:B:133:TYR:CE2	2.54	0.42
1:A:329:GLY:HA3	1:A:428:TYR:CZ	2.54	0.42
1:B:200:PHE:HB2	1:B:226:VAL:HB	2.01	0.42
1:A:328:VAL:O	1:A:427:ALA:HA	2.19	0.42
1:A:103:THR:HG21	1:A:190:PHE:HB3	2.02	0.42
1:A:525:ARG:HG2	1:A:525:ARG:O	2.20	0.41
4:A:1545:TZ4:C21	4:A:1545:TZ4:H5	2.50	0.41
1:B:5:ASP:HA	1:B:6:PRO:HD2	1.96	0.41

Continued on next page...

Continued from previous page...

Atom-1	Atom-2	Interatomic distance (Å)	Clash overlap (Å)
1:B:536:LEU:O	1:B:539:LEU:HB2	2.20	0.41
1:B:538:LYS:HA	1:B:541:SER:HB3	2.02	0.41
1:A:116:ILE:HA	1:A:147:VAL:O	2.21	0.41
1:A:294:ILE:HD11	1:A:402:VAL:HG21	2.03	0.41
1:A:68:VAL:HG13	1:A:127:ALA:HB2	2.03	0.41
1:B:537:PRO:O	1:B:541:SER:N	2.54	0.41
1:B:542:ALA:O	1:B:543:THR:HB	2.21	0.41
1:A:202:GLU:HA	1:A:228:GLN:O	2.21	0.40
1:B:339:LEU:HD11	1:B:399:SER:HA	2.04	0.40
1:A:300:VAL:HB	1:A:301:PRO:HD2	2.04	0.40
1:A:536:LEU:HD12	1:A:536:LEU:HA	1.87	0.40

There are no symmetry-related clashes.

5.3 Torsion angles [i](#)

5.3.1 Protein backbone [i](#)

In the following table, the Percentiles column shows the percent Ramachandran outliers of the chain as a percentile score with respect to all X-ray entries followed by that with respect to entries of similar resolution.

The Analysed column shows the number of residues for which the backbone conformation was analysed, and the total number of residues.

Mol	Chain	Analysed	Favoured	Allowed	Outliers	Percentiles
1	A	535/544 (98%)	504 (94%)	25 (5%)	6 (1%)	14 30
1	B	536/544 (98%)	509 (95%)	19 (4%)	8 (2%)	10 21
All	All	1071/1088 (98%)	1013 (95%)	44 (4%)	14 (1%)	12 24

All (14) Ramachandran outliers are listed below:

Mol	Chain	Res	Type
1	A	4	GLU
1	A	452	GLU
1	A	525	ARG
1	A	539	LEU
1	B	452	GLU
1	B	495	SER
1	B	497	SER

Continued on next page...

Continued from previous page...

Mol	Chain	Res	Type
1	B	543	THR
1	B	541	SER
1	B	542	ALA
1	A	540	LEU
1	B	494	ASP
1	B	506	ALA
1	A	523	GLY

5.3.2 Protein sidechains [i](#)

In the following table, the Percentiles column shows the percent sidechain outliers of the chain as a percentile score with respect to all X-ray entries followed by that with respect to entries of similar resolution.

The Analysed column shows the number of residues for which the sidechain conformation was analysed, and the total number of residues.

Mol	Chain	Analysed	Rotameric	Outliers	Percentiles	
1	A	441/442 (100%)	430 (98%)	11 (2%)	47	73
1	B	441/442 (100%)	432 (98%)	9 (2%)	55	78
All	All	882/884 (100%)	862 (98%)	20 (2%)	50	75

All (20) residues with a non-rotameric sidechain are listed below:

Mol	Chain	Res	Type
1	A	45	ARG
1	A	71	GLN
1	A	75	THR
1	A	81	GLU
1	A	200	PHE
1	A	280	ASP
1	A	295	PHE
1	A	413	GLN
1	A	524	LEU
1	A	539	LEU
1	A	540	LEU
1	B	60	LEU
1	B	195	MET
1	B	200	PHE
1	B	216	LEU
1	B	281	LEU

Continued on next page...

Continued from previous page...

Mol	Chain	Res	Type
1	B	295	PHE
1	B	369	GLN
1	B	386	LEU
1	B	539	LEU

Sometimes sidechains can be flipped to improve hydrogen bonding and reduce clashes. All (9) such sidechains are listed below:

Mol	Chain	Res	Type
1	A	7	GLN
1	A	223	HIS
1	A	322	GLN
1	B	66	GLN
1	B	184	GLN
1	B	223	HIS
1	B	287	HIS
1	B	369	GLN
1	B	464	ASN

5.3.3 RNA [i](#)

There are no RNA molecules in this entry.

5.4 Non-standard residues in protein, DNA, RNA chains [i](#)

There are no non-standard protein/DNA/RNA residues in this entry.

5.5 Carbohydrates [i](#)

There are no monosaccharides in this entry.

5.6 Ligand geometry [i](#)

5 ligands are modelled in this entry.

In the following table, the Counts columns list the number of bonds (or angles) for which Mogul statistics could be retrieved, the number of bonds (or angles) that are observed in the model and the number of bonds (or angles) that are defined in the Chemical Component Dictionary. The Link column lists molecule types, if any, to which the group is linked. The Z score for a bond length (or angle) is the number of standard deviations the observed value is removed from the

expected value. A bond length (or angle) with $|Z| > 2$ is considered an outlier worth inspection. RMSZ is the root-mean-square of all Z scores of the bond lengths (or angles).

Mol	Type	Chain	Res	Link	Bond lengths			Bond angles		
					Counts	RMSZ	# $ Z > 2$	Counts	RMSZ	# $ Z > 2$
4	TZ4	A	1545	-	56,57,57	1.73	15 (26%)	65,80,80	1.77	12 (18%)
2	NAG	A	1542	1	14,14,15	1.03	1 (7%)	17,19,21	1.52	2 (11%)
3	P6G	A	1544	-	18,18,18	2.18	6 (33%)	17,17,17	1.32	1 (5%)
4	TZ4	B	1545	-	56,57,57	1.69	14 (25%)	65,80,80	1.75	11 (16%)
2	NAG	A	1543	1	14,14,15	0.73	0	17,19,21	2.20	3 (17%)

In the following table, the Chirals column lists the number of chiral outliers, the number of chiral centers analysed, the number of these observed in the model and the number defined in the Chemical Component Dictionary. Similar counts are reported in the Torsion and Rings columns. '-' means no outliers of that kind were identified.

Mol	Type	Chain	Res	Link	Chirals	Torsions	Rings
4	TZ4	A	1545	-	-	9/15/26/26	0/8/8/8
2	NAG	A	1542	1	-	2/6/23/26	0/1/1/1
3	P6G	A	1544	-	-	9/16/16/16	-
4	TZ4	B	1545	-	-	8/15/26/26	0/8/8/8
2	NAG	A	1543	1	-	1/6/23/26	0/1/1/1

All (36) bond length outliers are listed below:

Mol	Chain	Res	Type	Atoms	Z	Observed(Å)	Ideal(Å)
4	A	1545	TZ4	C40-C39	-4.22	1.44	1.51
4	B	1545	TZ4	C38-C37	-4.13	1.44	1.50
3	A	1544	P6G	O10-C11	4.12	1.59	1.42
3	A	1544	P6G	O7-C8	3.90	1.59	1.42
4	B	1545	TZ4	C40-C39	-3.85	1.45	1.51
4	B	1545	TZ4	C42-C38	-3.80	1.37	1.51
3	A	1544	P6G	O4-C5	3.64	1.57	1.42
4	B	1545	TZ4	C41-C40	-3.59	1.38	1.51
3	A	1544	P6G	O1-C2	3.56	1.60	1.42
4	A	1545	TZ4	C42-C38	-3.50	1.38	1.51
4	A	1545	TZ4	C41-C40	-3.49	1.38	1.51
3	A	1544	P6G	O16-C17	3.41	1.56	1.42
4	A	1545	TZ4	C6-N2	3.33	1.43	1.38
4	B	1545	TZ4	C6-N2	3.21	1.42	1.38
4	A	1545	TZ4	C39-C37	3.12	1.45	1.40
4	A	1545	TZ4	C37-N8	3.11	1.36	1.32

Continued on next page...

Continued from previous page...

Mol	Chain	Res	Type	Atoms	Z	Observed(Å)	Ideal(Å)
4	B	1545	TZ4	C30-C39	3.03	1.44	1.38
3	A	1544	P6G	O13-C14	2.78	1.54	1.42
4	A	1545	TZ4	C38-C37	-2.75	1.46	1.50
2	A	1542	NAG	C1-C2	2.72	1.56	1.52
4	B	1545	TZ4	C37-N8	2.56	1.35	1.32
4	A	1545	TZ4	C30-C39	2.48	1.43	1.38
4	A	1545	TZ4	C34-C33	2.43	1.46	1.41
4	B	1545	TZ4	C27-C26	2.40	1.39	1.36
4	A	1545	TZ4	C4-C6	2.32	1.46	1.41
4	B	1545	TZ4	C36-C35	2.30	1.44	1.38
4	A	1545	TZ4	C36-C35	2.30	1.44	1.38
4	A	1545	TZ4	C15-C14	2.30	1.45	1.41
4	A	1545	TZ4	C27-C26	2.25	1.39	1.36
4	B	1545	TZ4	C17-C16	2.23	1.45	1.41
4	A	1545	TZ4	C17-C16	2.21	1.45	1.41
4	B	1545	TZ4	C39-C37	2.14	1.43	1.40
4	B	1545	TZ4	C42-C41	-2.13	1.43	1.51
4	B	1545	TZ4	C29-N7	2.04	1.50	1.45
4	A	1545	TZ4	C3-C4	2.03	1.45	1.41
4	B	1545	TZ4	C15-C14	2.03	1.44	1.41

All (29) bond angle outliers are listed below:

Mol	Chain	Res	Type	Atoms	Z	Observed(°)	Ideal(°)
2	A	1543	NAG	C1-O5-C5	7.27	122.04	112.19
4	A	1545	TZ4	C40-C39-C37	-5.59	115.85	121.08
4	B	1545	TZ4	C40-C39-C37	-5.54	115.90	121.08
4	B	1545	TZ4	N4-N5-N6	5.40	111.38	107.31
4	A	1545	TZ4	C41-C40-C39	4.45	121.97	112.84
4	A	1545	TZ4	N4-N5-N6	4.39	110.63	107.31
4	A	1545	TZ4	C39-C30-N7	4.24	127.31	119.54
4	A	1545	TZ4	C42-C38-C37	4.21	120.45	113.53
4	B	1545	TZ4	C41-C40-C39	4.07	121.20	112.84
4	B	1545	TZ4	C29-C28-N6	3.93	117.28	110.90
4	B	1545	TZ4	C39-C30-N7	3.88	126.65	119.54
4	A	1545	TZ4	C20-N2-C7	-3.67	115.63	118.90
2	A	1542	NAG	O5-C5-C6	3.57	112.81	107.20
4	B	1545	TZ4	C42-C38-C37	3.42	119.15	113.53
4	A	1545	TZ4	C28-N6-C27	-3.40	121.81	129.82
3	A	1544	P6G	O19-C18-C17	3.40	131.52	111.81
4	B	1545	TZ4	C28-N6-C27	-3.23	122.22	129.82
2	A	1542	NAG	C1-O5-C5	3.14	116.44	112.19

Continued on next page...

Continued from previous page...

Mol	Chain	Res	Type	Atoms	Z	Observed(°)	Ideal(°)
2	A	1543	NAG	O5-C1-C2	3.14	116.24	111.29
4	A	1545	TZ4	C15-C14-C7	-2.41	119.70	124.00
4	A	1545	TZ4	C19-C15-C14	2.39	122.97	120.90
2	A	1543	NAG	C4-C3-C2	-2.37	107.54	111.02
4	A	1545	TZ4	C29-C28-N6	2.34	114.70	110.90
4	B	1545	TZ4	C15-C14-C7	-2.28	119.95	124.00
4	B	1545	TZ4	C7-N2-C6	2.27	124.94	121.90
4	A	1545	TZ4	C22-C21-C20	-2.19	104.01	112.32
4	B	1545	TZ4	C19-C15-C14	2.17	122.78	120.90
4	A	1545	TZ4	C31-C30-N7	-2.11	115.14	122.06
4	B	1545	TZ4	C34-C33-C31	2.05	121.48	119.13

There are no chirality outliers.

All (29) torsion outliers are listed below:

Mol	Chain	Res	Type	Atoms
4	A	1545	TZ4	C21-C20-N2-C7
4	A	1545	TZ4	C21-C20-N2-C6
4	B	1545	TZ4	C21-C20-N2-C7
4	A	1545	TZ4	N2-C20-C21-C22
4	A	1545	TZ4	C23-C24-C25-C26
4	B	1545	TZ4	N2-C20-C21-C22
4	B	1545	TZ4	C23-C24-C25-C26
3	A	1544	P6G	O1-C2-C3-O4
2	A	1542	NAG	C4-C5-C6-O6
4	B	1545	TZ4	C21-C22-C23-C24
4	A	1545	TZ4	C20-C21-C22-C23
3	A	1544	P6G	C18-C17-O16-C15
4	A	1545	TZ4	C21-C22-C23-C24
4	B	1545	TZ4	C20-C21-C22-C23
2	A	1542	NAG	O5-C5-C6-O6
3	A	1544	P6G	C9-C8-O7-C6
3	A	1544	P6G	C2-C3-O4-C5
3	A	1544	P6G	C8-C9-O10-C11
4	B	1545	TZ4	C21-C20-N2-C6
4	A	1545	TZ4	C39-C30-N7-C29
4	B	1545	TZ4	C39-C30-N7-C29
4	A	1545	TZ4	C24-C25-C26-C27
4	A	1545	TZ4	C31-C30-N7-C29
4	B	1545	TZ4	C31-C30-N7-C29
2	A	1543	NAG	C4-C5-C6-O6
3	A	1544	P6G	O16-C17-C18-O19

Continued on next page...

Continued from previous page...

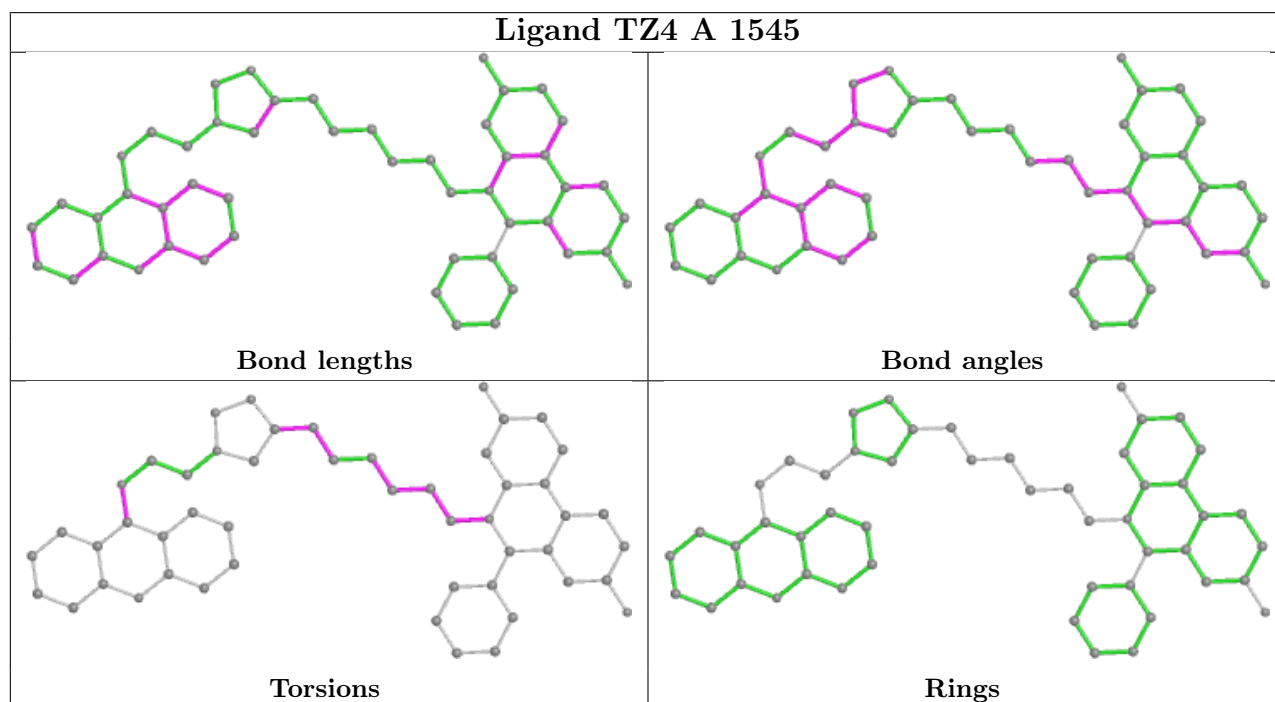
Mol	Chain	Res	Type	Atoms
3	A	1544	P6G	C14-C15-O16-C17
3	A	1544	P6G	C5-C6-O7-C8
3	A	1544	P6G	C6-C5-O4-C3

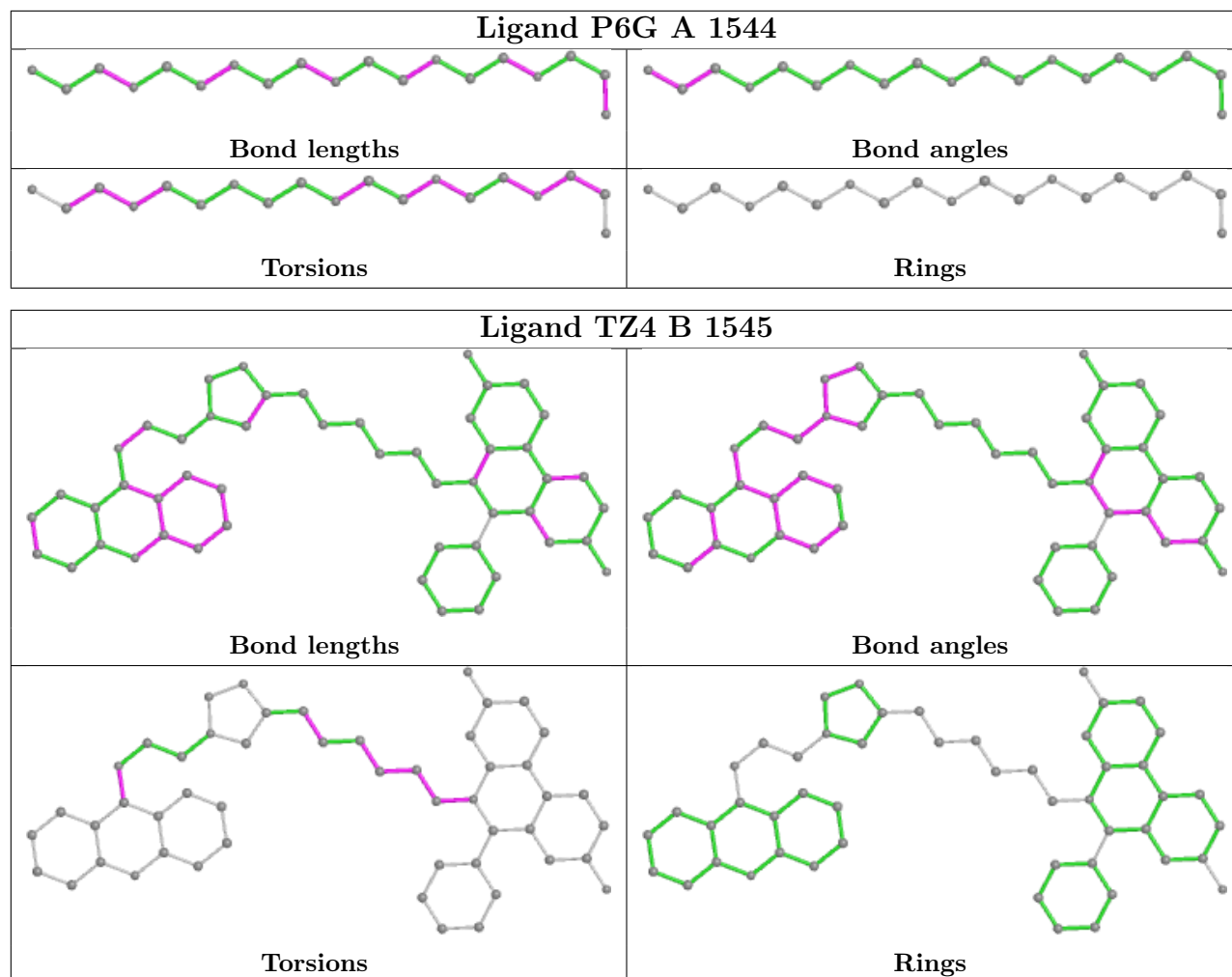
There are no ring outliers.

3 monomers are involved in 10 short contacts:

Mol	Chain	Res	Type	Clashes	Symm-Clashes
4	A	1545	TZ4	2	0
3	A	1544	P6G	5	0
4	B	1545	TZ4	3	0

The following is a two-dimensional graphical depiction of Mogul quality analysis of bond lengths, bond angles, torsion angles, and ring geometry for all instances of the Ligand of Interest. In addition, ligands with molecular weight > 250 and outliers as shown on the validation Tables will also be included. For torsion angles, if less than 5% of the Mogul distribution of torsion angles is within 10 degrees of the torsion angle in question, then that torsion angle is considered an outlier. Any bond that is central to one or more torsion angles identified as an outlier by Mogul will be highlighted in the graph. For rings, the root-mean-square deviation (RMSD) between the ring in question and similar rings identified by Mogul is calculated over all ring torsion angles. If the average RMSD is greater than 60 degrees and the minimal RMSD between the ring in question and any Mogul-identified rings is also greater than 60 degrees, then that ring is considered an outlier. The outliers are highlighted in purple. The color gray indicates Mogul did not find sufficient equivalents in the CSD to analyse the geometry.





5.7 Other polymers [i](#)

There are no such residues in this entry.

5.8 Polymer linkage issues [i](#)

There are no chain breaks in this entry.

6 Fit of model and data [i](#)

6.1 Protein, DNA and RNA chains [i](#)

In the following table, the column labelled ‘#RSRZ > 2’ contains the number (and percentage) of RSRZ outliers, followed by percent RSRZ outliers for the chain as percentile scores relative to all X-ray entries and entries of similar resolution. The OWAB column contains the minimum, median, 95th percentile and maximum values of the occupancy-weighted average B-factor per residue. The column labelled ‘Q < 0.9’ lists the number of (and percentage) of residues with an average occupancy less than 0.9.

Mol	Chain	Analysed	<RSRZ>	#RSRZ>2	OWAB(Å ²)	Q<0.9
1	A	535/544 (98%)	-0.61	7 (1%) 77 73	33, 48, 69, 99	0
1	B	536/544 (98%)	-0.55	11 (2%) 63 58	36, 53, 77, 100	0
All	All	1071/1088 (98%)	-0.58	18 (1%) 70 66	33, 50, 74, 100	0

All (18) RSRZ outliers are listed below:

Mol	Chain	Res	Type	RSRZ
1	B	259	PRO	5.6
1	A	259	PRO	5.2
1	A	541	SER	4.9
1	B	542	ALA	4.5
1	B	544	ALA	4.4
1	B	543	THR	3.9
1	A	264	GLY	3.6
1	A	495	SER	3.5
1	A	540	LEU	3.2
1	B	541	SER	3.0
1	B	492	PRO	2.8
1	A	496	LYS	2.5
1	B	497	SER	2.4
1	B	78	PRO	2.3
1	B	495	SER	2.3
1	B	323	ASP	2.3
1	A	494	ASP	2.1
1	B	4	GLU	2.1

6.2 Non-standard residues in protein, DNA, RNA chains [i](#)

There are no non-standard protein/DNA/RNA residues in this entry.

6.3 Carbohydrates [i](#)

There are no monosaccharides in this entry.

6.4 Ligands [i](#)

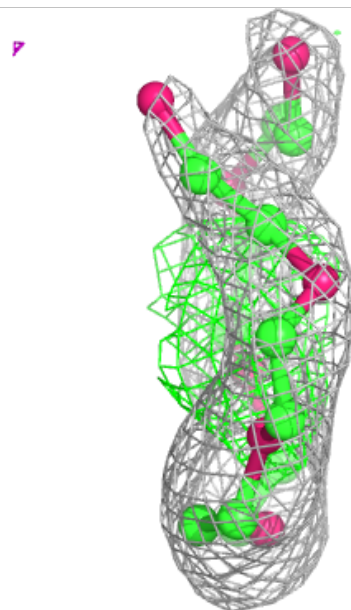
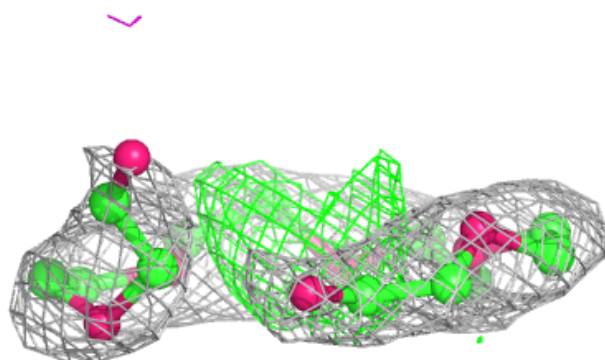
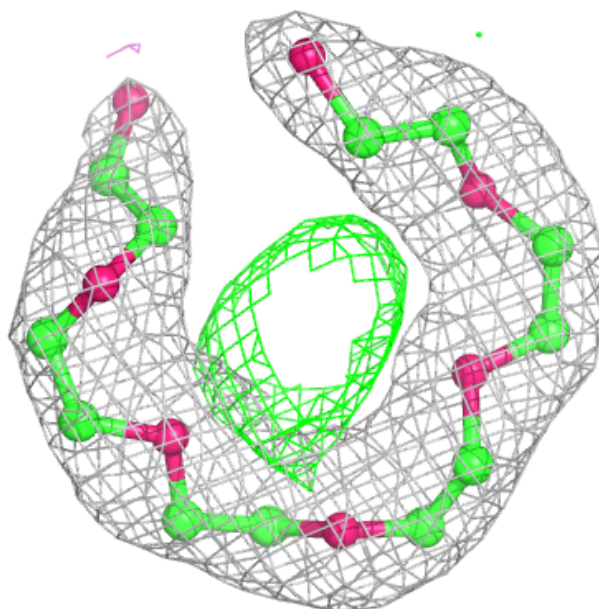
In the following table, the Atoms column lists the number of modelled atoms in the group and the number defined in the chemical component dictionary. The B-factors column lists the minimum, median, 95th percentile and maximum values of B factors of atoms in the group. The column labelled 'Q< 0.9' lists the number of atoms with occupancy less than 0.9.

Mol	Type	Chain	Res	Atoms	RSCC	RSR	B-factors(\AA^2)	Q<0.9
2	NAG	A	1543	14/15	0.84	0.43	75,83,86,86	0
2	NAG	A	1542	14/15	0.85	0.38	69,77,81,82	0
3	P6G	A	1544	19/19	0.88	0.23	57,65,71,73	0
4	TZ4	B	1545	50/50	0.90	0.17	45,55,73,75	0
4	TZ4	A	1545	50/50	0.92	0.15	35,48,66,67	0

The following is a graphical depiction of the model fit to experimental electron density of all instances of the Ligand of Interest. In addition, ligands with molecular weight > 250 and outliers as shown on the geometry validation Tables will also be included. Each fit is shown from different orientation to approximate a three-dimensional view.

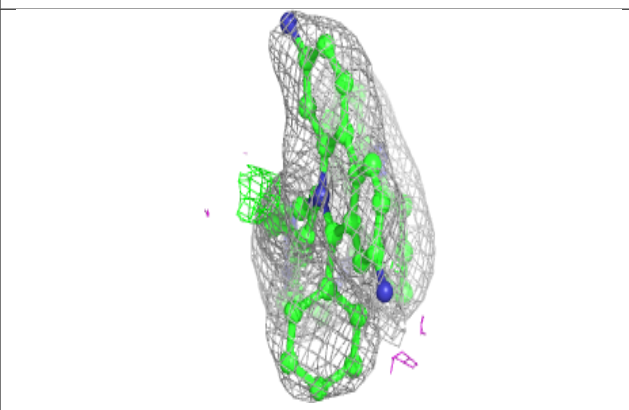
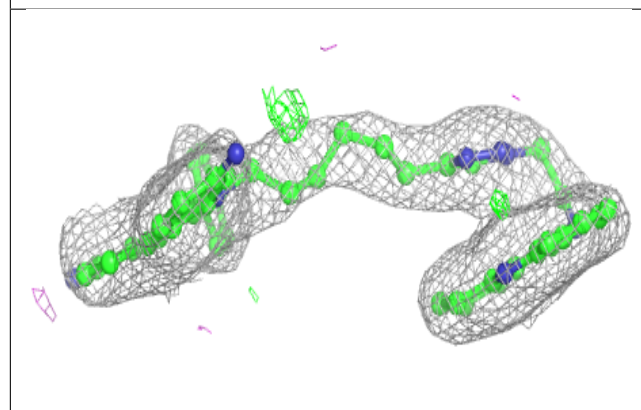
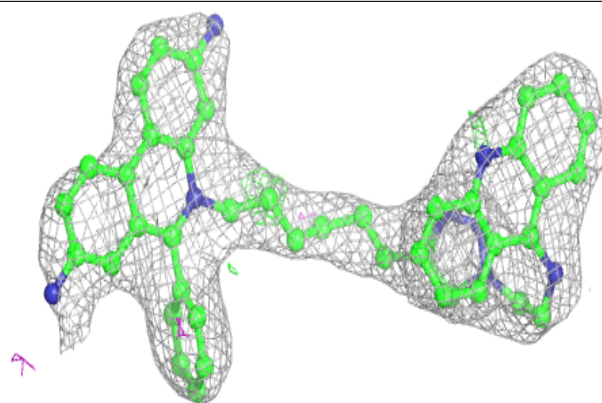
Electron density around P6G A 1544:

$2mF_o-DF_c$ (at 0.7 rmsd) in gray
 mF_o-DF_c (at 3 rmsd) in purple (negative)
and green (positive)

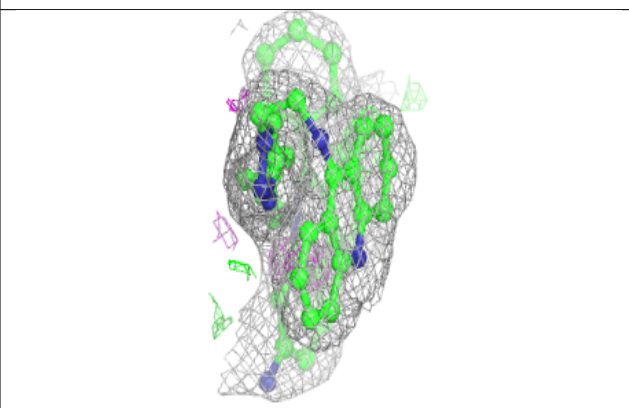
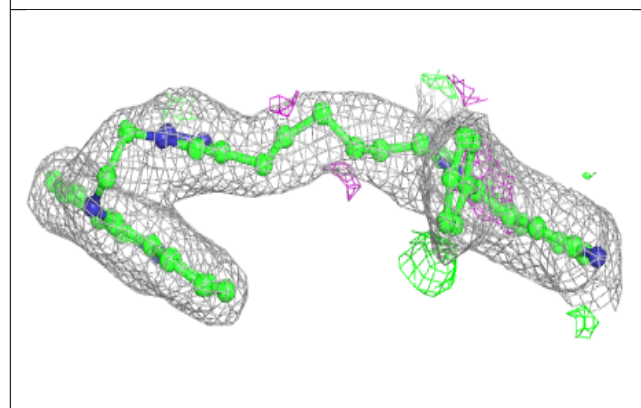
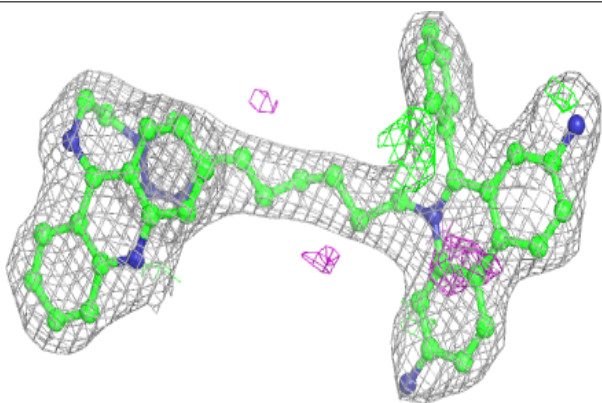


Electron density around TZ4 B 1545:

$2mF_o-DF_c$ (at 0.7 rmsd) in gray
 mF_o-DF_c (at 3 rmsd) in purple (negative)
and green (positive)

**Electron density around TZ4 A 1545:**

$2mF_o-DF_c$ (at 0.7 rmsd) in gray
 mF_o-DF_c (at 3 rmsd) in purple (negative)
and green (positive)



6.5 Other polymers [i](#)

There are no such residues in this entry.