



Full wwPDB X-ray Structure Validation Report ⓘ

Oct 30, 2023 – 06:41 PM JST

PDB ID : 4XO3
Title : Crystal Structure of E. coli Aminopeptidase N in complex with L-Leucine
Authors : Addlagatta, A.; Gumpena, R.
Deposited on : 2015-01-16
Resolution : 2.00 Å(reported)

This is a Full wwPDB X-ray Structure Validation Report for a publicly released PDB entry.

We welcome your comments at validation@mail.wwpdb.org

A user guide is available at

<https://www.wwpdb.org/validation/2017/XrayValidationReportHelp>

with specific help available everywhere you see the ⓘ symbol.

The types of validation reports are described at

<http://www.wwpdb.org/validation/2017/FAQs#types>.

The following versions of software and data (see [references ⓘ](#)) were used in the production of this report:

MolProbity : 4.02b-467
Mogul : 1.8.5 (274361), CSD as541be (2020)
Xtrriage (Phenix) : 1.13
EDS : 2.36
Percentile statistics : 20191225.v01 (using entries in the PDB archive December 25th 2019)
Refmac : 5.8.0158
CCP4 : 7.0.044 (Gargrove)
Ideal geometry (proteins) : Engh & Huber (2001)
Ideal geometry (DNA, RNA) : Parkinson et al. (1996)
Validation Pipeline (wwPDB-VP) : 2.36

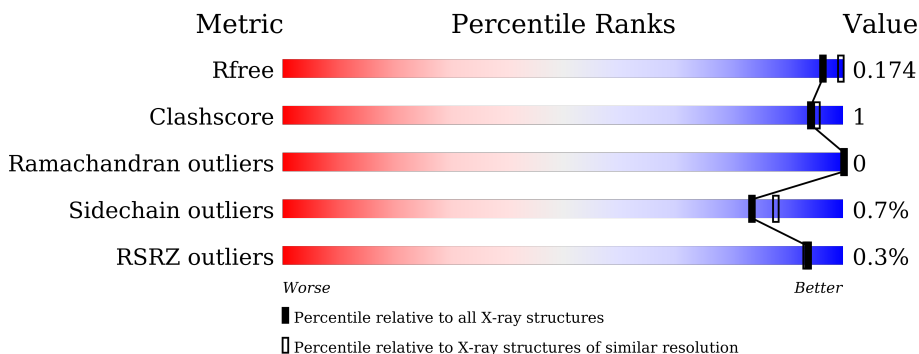
1 Overall quality at a glance

The following experimental techniques were used to determine the structure:

X-RAY DIFFRACTION

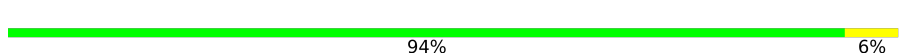
The reported resolution of this entry is 2.00 Å.

Percentile scores (ranging between 0-100) for global validation metrics of the entry are shown in the following graphic. The table shows the number of entries on which the scores are based.



Metric	Whole archive (#Entries)	Similar resolution (#Entries, resolution range(Å))
R_{free}	130704	8085 (2.00-2.00)
Clashscore	141614	9178 (2.00-2.00)
Ramachandran outliers	138981	9054 (2.00-2.00)
Sidechain outliers	138945	9053 (2.00-2.00)
RSRZ outliers	127900	7900 (2.00-2.00)

The table below summarises the geometric issues observed across the polymeric chains and their fit to the electron density. The red, orange, yellow and green segments of the lower bar indicate the fraction of residues that contain outliers for ≥ 3 , 2, 1 and 0 types of geometric quality criteria respectively. A grey segment represents the fraction of residues that are not modelled. The numeric value for each fraction is indicated below the corresponding segment, with a dot representing fractions $\leq 5\%$. The upper red bar (where present) indicates the fraction of residues that have poor fit to the electron density. The numeric value is given above the bar.

Mol	Chain	Length	Quality of chain
1	A	866	 94% 6%

The following table lists non-polymeric compounds, carbohydrate monomers and non-standard residues in protein, DNA, RNA chains that are outliers for geometric or electron-density-fit criteria:

Mol	Type	Chain	Res	Chirality	Geometry	Clashes	Electron density
5	GOL	A	914	-	X	-	-
6	MLI	A	916	-	X	-	-

Continued on next page...

Continued from previous page...

Mol	Type	Chain	Res	Chirality	Geometry	Clashes	Electron density
6	MLI	A	917	-	X	X	-

2 Entry composition [i](#)

There are 7 unique types of molecules in this entry. The entry contains 8393 atoms, of which 0 are hydrogens and 0 are deuteriums.

In the tables below, the ZeroOcc column contains the number of atoms modelled with zero occupancy, the AltConf column contains the number of residues with at least one atom in alternate conformation and the Trace column contains the number of residues modelled with at most 2 atoms.

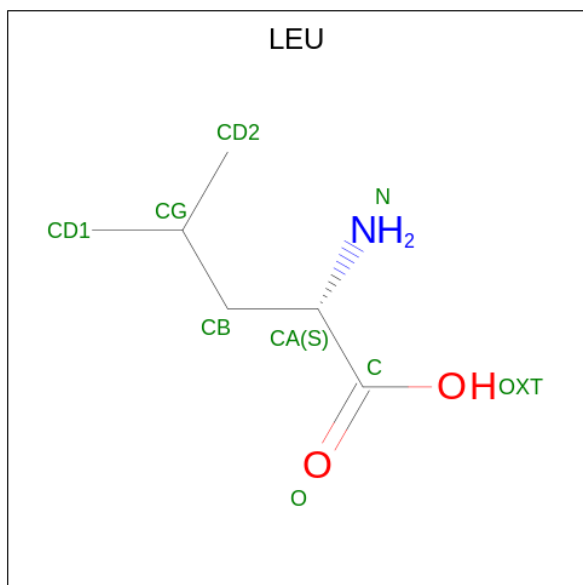
- Molecule 1 is a protein called Aminopeptidase N.

Mol	Chain	Residues	Atoms					ZeroOcc	AltConf	Trace
			Total	C	N	O	S			
1	A	866	7122	4505	1229	1360	28	0	26	0

- Molecule 2 is ZINC ION (three-letter code: ZN) (formula: Zn).

Mol	Chain	Residues	Atoms		ZeroOcc	AltConf
2	A	1	Total	Zn	0	0
			1	1		

- Molecule 3 is LEUCINE (three-letter code: LEU) (formula: C₆H₁₃NO₂).

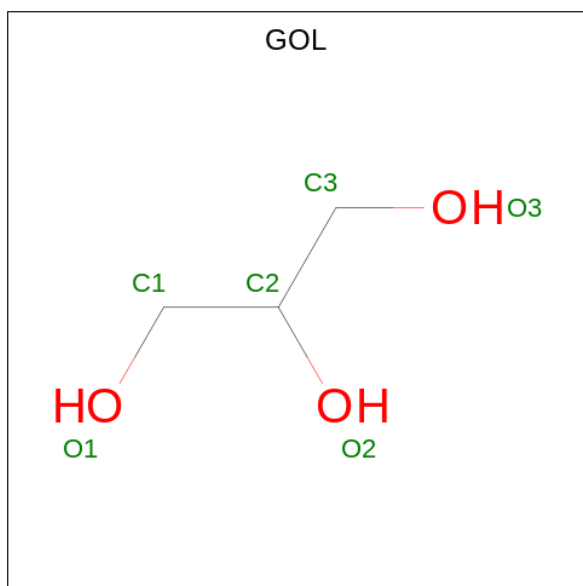


Mol	Chain	Residues	Atoms				ZeroOcc	AltConf
			Total	C	N	O		
3	A	1	18	12	2	4	0	1

- Molecule 4 is SODIUM ION (three-letter code: NA) (formula: Na).

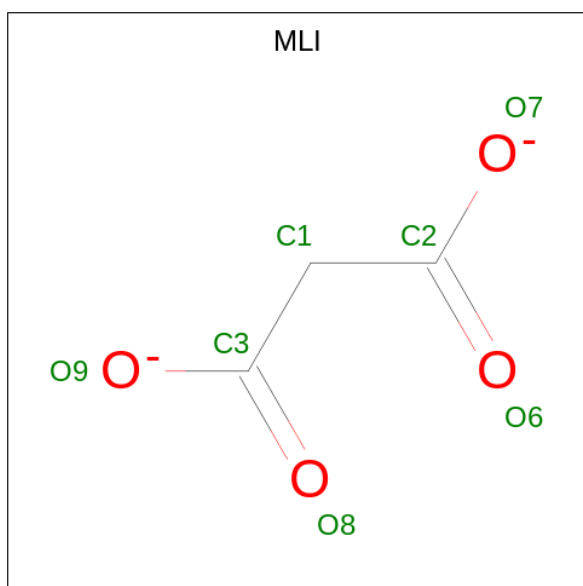
Mol	Chain	Residues	Atoms		ZeroOcc	AltConf
4	A	11	Total	Na	0	0
			11	11		

- Molecule 5 is GLYCEROL (three-letter code: GOL) (formula: $C_3H_8O_3$).



Mol	Chain	Residues	Atoms			ZeroOcc	AltConf
5	A	1	Total	C	O	0	0
			6	3	3		

- Molecule 6 is MALONATE ION (three-letter code: MLI) (formula: $C_3H_2O_4$).



Mol	Chain	Residues	Atoms	ZeroOcc	AltConf
6	A	1	Total C O 7 3 4	0	0
6	A	1	Total C O 7 3 4	0	0
6	A	1	Total C O 7 3 4	0	0

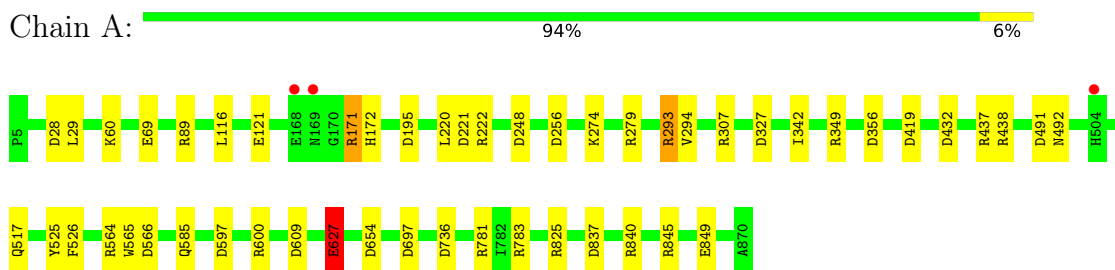
- Molecule 7 is water.

Mol	Chain	Residues	Atoms	ZeroOcc	AltConf
7	A	1214	Total O 1214 1214	0	0

3 Residue-property plots [i](#)

These plots are drawn for all protein, RNA, DNA and oligosaccharide chains in the entry. The first graphic for a chain summarises the proportions of the various outlier classes displayed in the second graphic. The second graphic shows the sequence view annotated by issues in geometry and electron density. Residues are color-coded according to the number of geometric quality criteria for which they contain at least one outlier: green = 0, yellow = 1, orange = 2 and red = 3 or more. A red dot above a residue indicates a poor fit to the electron density ($RSRZ > 2$). Stretches of 2 or more consecutive residues without any outlier are shown as a green connector. Residues present in the sample, but not in the model, are shown in grey.

- Molecule 1: Aminopeptidase N



4 Data and refinement statistics i

Property	Value	Source
Space group	P 31 2 1	Depositor
Cell constants a, b, c, α , β , γ	120.30Å 120.30Å 169.60Å 90.00° 90.00° 120.00°	Depositor
Resolution (Å)	13.43 – 2.00 13.43 – 2.00	Depositor EDS
% Data completeness (in resolution range)	98.1 (13.43-2.00) 98.4 (13.43-2.00)	Depositor EDS
R_{merge}	(Not available)	Depositor
R_{sym}	0.10	Depositor
$\langle I/\sigma(I) \rangle$ ¹	18.86 (at 1.99Å)	Xtrriage
Refinement program	REFMAC 5.8.0107	Depositor
R, R_{free}	0.124 , 0.165 0.139 , 0.174	Depositor DCC
R_{free} test set	4720 reflections (5.00%)	wwPDB-VP
Wilson B-factor (Å ²)	20.0	Xtrriage
Anisotropy	0.028	Xtrriage
Bulk solvent k_{sol} (e/Å ³), B_{sol} (Å ²)	0.43 , 60.5	EDS
L-test for twinning ²	$\langle L \rangle = 0.51$, $\langle L^2 \rangle = 0.35$	Xtrriage
Estimated twinning fraction	0.009 for -h,-k,l	Xtrriage
F_o, F_c correlation	0.97	EDS
Total number of atoms	8393	wwPDB-VP
Average B, all atoms (Å ²)	23.0	wwPDB-VP

Xtrriage's analysis on translational NCS is as follows: *The largest off-origin peak in the Patterson function is 3.10% of the height of the origin peak. No significant pseudotranslation is detected.*

¹Intensities estimated from amplitudes.

²Theoretical values of $\langle |L| \rangle$, $\langle L^2 \rangle$ for acentric reflections are 0.5, 0.333 respectively for untwinned datasets, and 0.375, 0.2 for perfectly twinned datasets.

5 Model quality i

5.1 Standard geometry i

Bond lengths and bond angles in the following residue types are not validated in this section: MLI, GOL, ZN, NA

The Z score for a bond length (or angle) is the number of standard deviations the observed value is removed from the expected value. A bond length (or angle) with $|Z| > 5$ is considered an outlier worth inspection. RMSZ is the root-mean-square of all Z scores of the bond lengths (or angles).

Mol	Chain	Bond lengths		Bond angles	
		RMSZ	# Z >5	RMSZ	# Z >5
1	A	1.10	9/7317 (0.1%)	1.05	31/9933 (0.3%)

All (9) bond length outliers are listed below:

Mol	Chain	Res	Type	Atoms	Z	Observed(Å)	Ideal(Å)
1	A	525	TYR	CB-CG	7.75	1.63	1.51
1	A	525	TYR	CG-CD2	7.49	1.48	1.39
1	A	525	TYR	CE1-CZ	7.38	1.48	1.38
1	A	69	GLU	CD-OE1	-7.13	1.17	1.25
1	A	627[A]	GLU	CD-OE2	5.98	1.32	1.25
1	A	627[B]	GLU	CD-OE2	5.98	1.32	1.25
1	A	585	GLN	CG-CD	5.87	1.64	1.51
1	A	349	ARG	CD-NE	-5.80	1.36	1.46
1	A	349	ARG	CZ-NH2	-5.13	1.26	1.33

All (31) bond angle outliers are listed below:

Mol	Chain	Res	Type	Atoms	Z	Observed(°)	Ideal(°)
1	A	349	ARG	NE-CZ-NH2	-15.13	112.73	120.30
1	A	349	ARG	NE-CZ-NH1	10.14	125.37	120.30
1	A	293[A]	ARG	NE-CZ-NH2	-9.18	115.71	120.30
1	A	293[B]	ARG	NE-CZ-NH2	-9.18	115.71	120.30
1	A	564	ARG	NE-CZ-NH2	-9.18	115.71	120.30
1	A	248	ASP	CB-CG-OD1	-8.70	110.47	118.30
1	A	837	ASP	CB-CG-OD1	8.42	125.88	118.30
1	A	279	ARG	NE-CZ-NH2	-7.83	116.38	120.30
1	A	609	ASP	CB-CG-OD1	7.77	125.29	118.30
1	A	438	ARG	NE-CZ-NH1	7.40	124.00	120.30
1	A	437	ARG	NE-CZ-NH1	7.21	123.90	120.30
1	A	438	ARG	NE-CZ-NH2	-7.14	116.73	120.30

Continued on next page...

Continued from previous page...

Mol	Chain	Res	Type	Atoms	Z	Observed(°)	Ideal(°)
1	A	845	ARG	NE-CZ-NH2	-6.74	116.93	120.30
1	A	221	ASP	CB-CG-OD1	6.68	124.31	118.30
1	A	256	ASP	CB-CG-OD1	6.62	124.25	118.30
1	A	419	ASP	CB-CG-OD2	-6.53	112.42	118.30
1	A	171	ARG	NE-CZ-NH1	6.36	123.48	120.30
1	A	781	ARG	NE-CZ-NH1	6.19	123.39	120.30
1	A	697	ASP	CB-CG-OD1	6.09	123.78	118.30
1	A	654	ASP	CB-CG-OD1	6.04	123.73	118.30
1	A	432	ASP	CB-CG-OD1	5.96	123.66	118.30
1	A	222	ARG	NE-CZ-NH2	-5.84	117.38	120.30
1	A	349	ARG	CB-CG-CD	-5.81	96.50	111.60
1	A	736	ASP	CB-CG-OD1	5.71	123.44	118.30
1	A	279	ARG	NE-CZ-NH1	5.67	123.13	120.30
1	A	491	ASP	CB-CG-OD1	5.62	123.36	118.30
1	A	566	ASP	CB-CG-OD2	-5.38	113.45	118.30
1	A	845	ARG	NE-CZ-NH1	5.26	122.93	120.30
1	A	307	ARG	NE-CZ-NH2	-5.19	117.70	120.30
1	A	222	ARG	NE-CZ-NH1	5.05	122.83	120.30
1	A	89	ARG	CG-CD-NE	-5.03	101.24	111.80

There are no chirality outliers.

There are no planarity outliers.

5.2 Too-close contacts [\(i\)](#)

In the following table, the Non-H and H(model) columns list the number of non-hydrogen atoms and hydrogen atoms in the chain respectively. The H(added) column lists the number of hydrogen atoms added and optimized by MolProbity. The Clashes column lists the number of clashes within the asymmetric unit, whereas Symm-Clashes lists symmetry-related clashes.

Mol	Chain	Non-H	H(model)	H(added)	Clashes	Symm-Clashes
1	A	7122	0	6950	18	0
2	A	1	0	0	0	0
3	A	18	0	20	1	0
4	A	11	0	0	0	0
5	A	6	0	8	0	0
6	A	21	0	6	6	0
7	A	1214	0	0	6	0
All	All	8393	0	6984	19	0

The all-atom clashscore is defined as the number of clashes found per 1000 atoms (including

hydrogen atoms). The all-atom clashscore for this structure is 1.

All (19) close contacts within the same asymmetric unit are listed below, sorted by their clash magnitude.

Atom-1	Atom-2	Interatomic distance (Å)	Clash overlap (Å)
1:A:28:ASP:OD1	1:A:171:ARG:NH2	2.18	0.76
1:A:274:LYS:HD3	7:A:1111:HOH:O	1.96	0.64
1:A:825:ARG:NH2	7:A:1006:HOH:O	2.32	0.62
1:A:293[B]:ARG:HH12	6:A:917:MLI:H12	1.66	0.60
1:A:492:ASN:HB3	1:A:526:PHE:CE2	2.39	0.57
6:A:917:MLI:H12	7:A:1385:HOH:O	2.06	0.55
1:A:597:ASP:OD1	1:A:600[A]:ARG:NH1	2.35	0.54
1:A:849[B]:GLU:OE1	7:A:1001:HOH:O	2.20	0.48
1:A:293[B]:ARG:NH1	6:A:917:MLI:C1	2.79	0.45
1:A:627[B]:GLU:HG2	1:A:627[B]:GLU:O	2.17	0.45
1:A:293[B]:ARG:HH12	6:A:917:MLI:C1	2.30	0.45
1:A:783:ARG:HD2	6:A:916:MLI:O8	2.16	0.44
1:A:29[A]:LEU:HD21	1:A:116:LEU:HD12	2.00	0.43
1:A:195:ASP:HB3	1:A:220:LEU:HG	2.00	0.43
1:A:342:ILE:HG23	1:A:565:TRP:CE2	2.55	0.42
1:A:294:VAL:HG22	6:A:917:MLI:H11	2.02	0.41
1:A:60:LYS:NZ	7:A:1013:HOH:O	2.37	0.41
1:A:121:GLU:OE1	3:A:902[A]:LEU:N	2.54	0.41
1:A:840:ARG:HG2	7:A:1495:HOH:O	2.21	0.40

There are no symmetry-related clashes.

5.3 Torsion angles [i](#)

5.3.1 Protein backbone [i](#)

In the following table, the Percentiles column shows the percent Ramachandran outliers of the chain as a percentile score with respect to all X-ray entries followed by that with respect to entries of similar resolution.

The Analysed column shows the number of residues for which the backbone conformation was analysed, and the total number of residues.

Mol	Chain	Analysed	Favoured	Allowed	Outliers	Percentiles
1	A	890/866 (103%)	876 (98%)	14 (2%)	0	100 100

There are no Ramachandran outliers to report.

5.3.2 Protein sidechains [i](#)

In the following table, the Percentiles column shows the percent sidechain outliers of the chain as a percentile score with respect to all X-ray entries followed by that with respect to entries of similar resolution.

The Analysed column shows the number of residues for which the sidechain conformation was analysed, and the total number of residues.

Mol	Chain	Analysed	Rotameric	Outliers	Percentiles
1	A	767/741 (104%)	761 (99%)	6 (1%)	81 86

All (6) residues with a non-rotameric sidechain are listed below:

Mol	Chain	Res	Type
1	A	172	HIS
1	A	327	ASP
1	A	356	ASP
1	A	517	GLN
1	A	627[A]	GLU
1	A	627[B]	GLU

Sometimes sidechains can be flipped to improve hydrogen bonding and reduce clashes. There are no such sidechains identified.

5.3.3 RNA [i](#)

There are no RNA molecules in this entry.

5.4 Non-standard residues in protein, DNA, RNA chains [i](#)

There are no non-standard protein/DNA/RNA residues in this entry.

5.5 Carbohydrates [i](#)

There are no monosaccharides in this entry.

5.6 Ligand geometry [i](#)

Of 18 ligands modelled in this entry, 12 are monoatomic - leaving 6 for Mogul analysis.

In the following table, the Counts columns list the number of bonds (or angles) for which Mogul statistics could be retrieved, the number of bonds (or angles) that are observed in the model and

the number of bonds (or angles) that are defined in the Chemical Component Dictionary. The Link column lists molecule types, if any, to which the group is linked. The Z score for a bond length (or angle) is the number of standard deviations the observed value is removed from the expected value. A bond length (or angle) with $|Z| > 2$ is considered an outlier worth inspection. RMSZ is the root-mean-square of all Z scores of the bond lengths (or angles).

Mol	Type	Chain	Res	Link	Bond lengths			Bond angles		
					Counts	RMSZ	# Z > 2	Counts	RMSZ	# Z > 2
6	MLI	A	915	-	6,6,6	1.64	1 (16%)	7,7,7	1.81	2 (28%)
3	LEU	A	902[A]	2	7,8,8	0.68	0	9,10,10	1.18	1 (11%)
6	MLI	A	916	-	6,6,6	2.04	2 (33%)	7,7,7	3.56	5 (71%)
6	MLI	A	917	-	6,6,6	2.75	4 (66%)	7,7,7	2.48	3 (42%)
5	GOL	A	914	-	5,5,5	0.61	0	5,5,5	1.60	2 (40%)
3	LEU	A	902[B]	2	7,8,8	0.73	0	9,10,10	1.19	1 (11%)

In the following table, the Chirals column lists the number of chiral outliers, the number of chiral centers analysed, the number of these observed in the model and the number defined in the Chemical Component Dictionary. Similar counts are reported in the Torsion and Rings columns. '-' means no outliers of that kind were identified.

Mol	Type	Chain	Res	Link	Chirals	Torsions	Rings
6	MLI	A	915	-	-	3/4/4/4	-
3	LEU	A	902[A]	2	-	2/8/8/8	-
6	MLI	A	916	-	-	4/4/4/4	-
6	MLI	A	917	-	-	2/4/4/4	-
5	GOL	A	914	-	-	4/4/4/4	-
3	LEU	A	902[B]	2	-	1/8/8/8	-

All (7) bond length outliers are listed below:

Mol	Chain	Res	Type	Atoms	Z	Observed(Å)	Ideal(Å)
6	A	917	MLI	O6-C2	4.62	1.37	1.22
6	A	916	MLI	C1-C3	3.60	1.56	1.51
6	A	917	MLI	C1-C2	2.66	1.55	1.51
6	A	917	MLI	O8-C3	2.50	1.30	1.22
6	A	916	MLI	C1-C2	2.45	1.54	1.51
6	A	917	MLI	C1-C3	2.44	1.54	1.51
6	A	915	MLI	C1-C2	2.39	1.54	1.51

All (14) bond angle outliers are listed below:

Mol	Chain	Res	Type	Atoms	Z	Observed(°)	Ideal(°)
6	A	916	MLI	O9-C3-C1	5.04	130.63	114.54
6	A	916	MLI	O9-C3-O8	-4.98	110.88	123.30
6	A	917	MLI	O7-C2-C1	-3.91	102.06	114.54
6	A	917	MLI	C3-C1-C2	3.87	126.40	112.87
6	A	916	MLI	O7-C2-O6	-3.76	113.92	123.30
6	A	916	MLI	O7-C2-C1	3.64	126.15	114.54
6	A	915	MLI	O8-C3-C1	-3.30	112.44	122.08
6	A	916	MLI	C3-C1-C2	-2.97	102.47	112.87
6	A	917	MLI	O6-C2-C1	2.90	130.55	122.08
6	A	915	MLI	O9-C3-C1	2.65	122.99	114.54
3	A	902[A]	LEU	OXT-C-CA	2.53	122.00	113.38
5	A	914	GOL	O2-C2-C3	-2.47	98.24	109.12
3	A	902[B]	LEU	OXT-C-CA	2.38	121.48	113.38
5	A	914	GOL	O2-C2-C1	2.19	118.75	109.12

There are no chirality outliers.

All (16) torsion outliers are listed below:

Mol	Chain	Res	Type	Atoms
5	A	914	GOL	O1-C1-C2-O2
5	A	914	GOL	O1-C1-C2-C3
5	A	914	GOL	C1-C2-C3-O3
5	A	914	GOL	O2-C2-C3-O3
3	A	902[A]	LEU	OXT-C-CA-CB
6	A	915	MLI	C3-C1-C2-O6
6	A	915	MLI	C3-C1-C2-O7
6	A	916	MLI	C3-C1-C2-O7
3	A	902[A]	LEU	O-C-CA-CB
6	A	916	MLI	C2-C1-C3-O9
6	A	917	MLI	C2-C1-C3-O8
6	A	917	MLI	C2-C1-C3-O9
6	A	916	MLI	C3-C1-C2-O6
6	A	916	MLI	C2-C1-C3-O8
3	A	902[B]	LEU	N-CA-CB-CG
6	A	915	MLI	C2-C1-C3-O8

There are no ring outliers.

3 monomers are involved in 7 short contacts:

Mol	Chain	Res	Type	Clashes	Symm-Clashes
3	A	902[A]	LEU	1	0
6	A	916	MLI	1	0

Continued on next page...

Continued from previous page...

Mol	Chain	Res	Type	Clashes	Symm-Clashes
6	A	917	MLI	5	0

5.7 Other polymers [i](#)

There are no such residues in this entry.

5.8 Polymer linkage issues [i](#)

There are no chain breaks in this entry.

6 Fit of model and data [i](#)

6.1 Protein, DNA and RNA chains [i](#)

In the following table, the column labelled '#RSRZ > 2' contains the number (and percentage) of RSRZ outliers, followed by percent RSRZ outliers for the chain as percentile scores relative to all X-ray entries and entries of similar resolution. The OWAB column contains the minimum, median, 95th percentile and maximum values of the occupancy-weighted average B-factor per residue. The column labelled 'Q < 0.9' lists the number of (and percentage) of residues with an average occupancy less than 0.9.

Mol	Chain	Analysed	<RSRZ>	#RSRZ>2	OWAB(Å ²)	Q<0.9
1	A	866/866 (100%)	-0.88	3 (0%) 94 93	13, 20, 34, 63	0

All (3) RSRZ outliers are listed below:

Mol	Chain	Res	Type	RSRZ
1	A	169	ASN	3.7
1	A	504	HIS	2.5
1	A	168	GLU	2.2

6.2 Non-standard residues in protein, DNA, RNA chains [i](#)

There are no non-standard protein/DNA/RNA residues in this entry.

6.3 Carbohydrates [i](#)

There are no monosaccharides in this entry.

6.4 Ligands [i](#)

In the following table, the Atoms column lists the number of modelled atoms in the group and the number defined in the chemical component dictionary. The B-factors column lists the minimum, median, 95th percentile and maximum values of B factors of atoms in the group. The column labelled 'Q < 0.9' lists the number of atoms with occupancy less than 0.9.

Mol	Type	Chain	Res	Atoms	RSCC	RSR	B-factors(Å ²)	Q<0.9
6	MLI	A	916	7/7	0.86	0.21	44,48,57,58	0
6	MLI	A	917	7/7	0.88	0.16	33,55,60,63	0
5	GOL	A	914	6/6	0.89	0.14	45,50,59,62	0
4	NA	A	906	1/1	0.91	0.29	47,47,47,47	0

Continued on next page...

Continued from previous page...

Mol	Type	Chain	Res	Atoms	RSCC	RSR	B-factors(Å ²)	Q<0.9
4	NA	A	907	1/1	0.92	0.11	37,37,37,37	0
4	NA	A	913	1/1	0.94	0.16	49,49,49,49	0
4	NA	A	905	1/1	0.95	0.19	42,42,42,42	0
4	NA	A	910	1/1	0.95	0.31	42,42,42,42	0
6	MLI	A	915	7/7	0.96	0.18	26,32,39,50	0
3	LEU	A	902[B]	9/9	0.98	0.08	8,8,8,8	9
3	LEU	A	902[A]	9/9	0.98	0.08	16,17,19,19	9
4	NA	A	908	1/1	0.98	0.16	32,32,32,32	0
4	NA	A	904	1/1	0.99	0.14	27,27,27,27	0
4	NA	A	909	1/1	0.99	0.14	25,25,25,25	0
4	NA	A	903	1/1	0.99	0.10	23,23,23,23	0
4	NA	A	911	1/1	0.99	0.05	25,25,25,25	0
4	NA	A	912	1/1	0.99	0.09	24,24,24,24	0
2	ZN	A	901	1/1	1.00	0.03	14,14,14,14	0

6.5 Other polymers [i](#)

There are no such residues in this entry.