



Full wwPDB X-ray Structure Validation Report ⓘ

Dec 18, 2023 – 04:56 am GMT

PDB ID : 2XJ9
Title : Dimer Structure of the bacterial cell division regulator MipZ
Authors : Michie, K.A.; Lowe, J.
Deposited on : 2010-07-02
Resolution : 2.80 Å(reported)

This is a Full wwPDB X-ray Structure Validation Report for a publicly released PDB entry.

We welcome your comments at validation@mail.wwpdb.org

A user guide is available at

<https://www.wwpdb.org/validation/2017/XrayValidationReportHelp>

with specific help available everywhere you see the ⓘ symbol.

The types of validation reports are described at

<http://www.wwpdb.org/validation/2017/FAQs#types>.

The following versions of software and data (see [references ⓘ](#)) were used in the production of this report:

MolProbity : 4.02b-467
Mogul : 1.8.4, CSD as541be (2020)
Xtriage (Phenix) : 1.13
EDS : 2.36
buster-report : 1.1.7 (2018)
Percentile statistics : 20191225.v01 (using entries in the PDB archive December 25th 2019)
Refmac : 5.8.0158
CCP4 : 7.0.044 (Gargrove)
Ideal geometry (proteins) : Engh & Huber (2001)
Ideal geometry (DNA, RNA) : Parkinson et al. (1996)
Validation Pipeline (wwPDB-VP) : 2.36

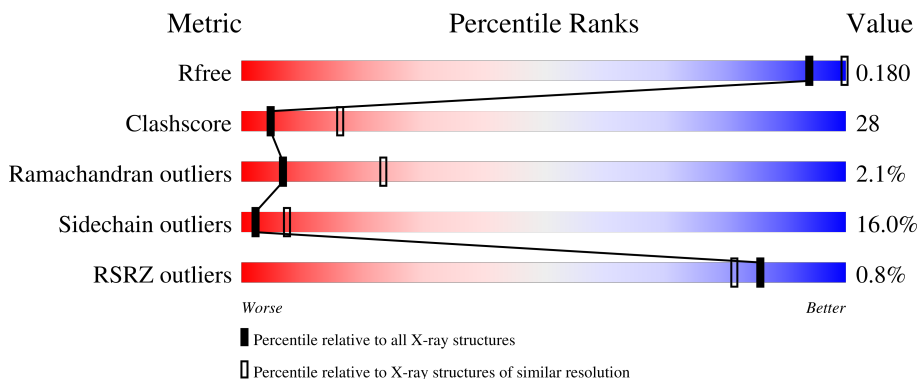
1 Overall quality at a glance

The following experimental techniques were used to determine the structure:

X-RAY DIFFRACTION

The reported resolution of this entry is 2.80 Å.

Percentile scores (ranging between 0-100) for global validation metrics of the entry are shown in the following graphic. The table shows the number of entries on which the scores are based.



Metric	Whole archive (#Entries)	Similar resolution (#Entries, resolution range(Å))
R_{free}	130704	3140 (2.80-2.80)
Clashscore	141614	3569 (2.80-2.80)
Ramachandran outliers	138981	3498 (2.80-2.80)
Sidechain outliers	138945	3500 (2.80-2.80)
RSRZ outliers	127900	3078 (2.80-2.80)

The table below summarises the geometric issues observed across the polymeric chains and their fit to the electron density. The red, orange, yellow and green segments of the lower bar indicate the fraction of residues that contain outliers for ≥ 3 , 2, 1 and 0 types of geometric quality criteria respectively. A grey segment represents the fraction of residues that are not modelled. The numeric value for each fraction is indicated below the corresponding segment, with a dot representing fractions $\leq 5\%$. The upper red bar (where present) indicates the fraction of residues that have poor fit to the electron density. The numeric value is given above the bar.

Mol	Chain	Length	Quality of chain
1	A	286	 48% 36% 8% • 7%
1	B	286	 48% 35% 9% • 7%

The following table lists non-polymeric compounds, carbohydrate monomers and non-standard residues in protein, DNA, RNA chains that are outliers for geometric or electron-density-fit criteria:

Mol	Type	Chain	Res	Chirality	Geometry	Clashes	Electron density
3	AGS	B	1273	-	-	X	-

2 Entry composition [i](#)

There are 4 unique types of molecules in this entry. The entry contains 4244 atoms, of which 3 are hydrogens and 0 are deuteriums.

In the tables below, the ZeroOcc column contains the number of atoms modelled with zero occupancy, the AltConf column contains the number of residues with at least one atom in alternate conformation and the Trace column contains the number of residues modelled with at most 2 atoms.

- Molecule 1 is a protein called MIPZ.

Mol	Chain	Residues	Atoms						ZeroOcc	AltConf	Trace
			Total	C	H	N	O	S			
1	A	265	2069	1301	2	383	376	7	0	0	0
1	B	265	2057	1295	1	376	378	7	0	0	0

There are 18 discrepancies between the modelled and reference sequences:

Chain	Residue	Modelled	Actual	Comment	Reference
A	279	GLY	-	expression tag	UNP B8GY04
A	280	SER	-	expression tag	UNP B8GY04
A	281	HIS	-	expression tag	UNP B8GY04
A	282	HIS	-	expression tag	UNP B8GY04
A	283	HIS	-	expression tag	UNP B8GY04
A	284	HIS	-	expression tag	UNP B8GY04
A	285	HIS	-	expression tag	UNP B8GY04
A	286	HIS	-	expression tag	UNP B8GY04
A	42	ALA	ASP	engineered mutation	UNP B8GY04
B	279	GLY	-	expression tag	UNP B8GY04
B	280	SER	-	expression tag	UNP B8GY04
B	281	HIS	-	expression tag	UNP B8GY04
B	282	HIS	-	expression tag	UNP B8GY04
B	283	HIS	-	expression tag	UNP B8GY04
B	284	HIS	-	expression tag	UNP B8GY04
B	285	HIS	-	expression tag	UNP B8GY04
B	286	HIS	-	expression tag	UNP B8GY04
B	42	ALA	ASP	engineered mutation	UNP B8GY04

- Molecule 2 is MAGNESIUM ION (three-letter code: MG) (formula: Mg).

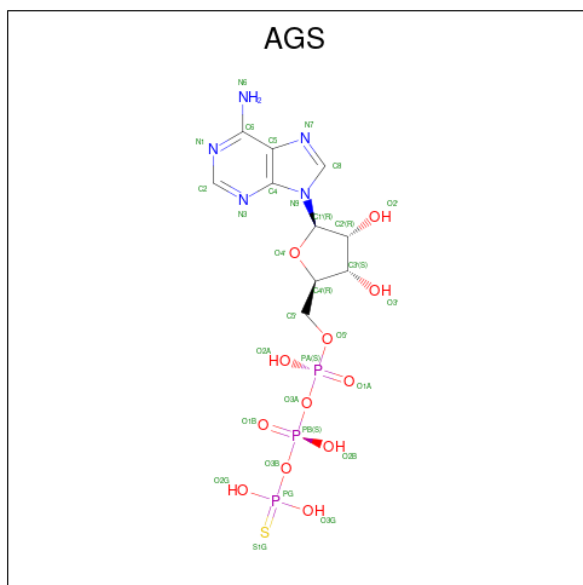
Mol	Chain	Residues	Atoms		ZeroOcc	AltConf
2	A	1	Total	Mg	0	0
			1	1		

Continued on next page...

Continued from previous page...

Mol	Chain	Residues	Atoms		ZeroOcc	AltConf
2	B	1	Total	Mg	0	0
			1	1		

- Molecule 3 is PHOSPHOTHIOPHOSPHORIC ACID-ADENYLATE ESTER (three-letter code: AGS) (formula: C₁₀H₁₆N₅O₁₂P₃S).



Mol	Chain	Residues	Atoms					ZeroOcc	AltConf	
			Total	C	N	O	P			S
3	A	1	Total	C	N	O	P	S	0	0
			31	10	5	12	3	1		
3	B	1	Total	C	N	O	P	S	0	0
			31	10	5	12	3	1		

- Molecule 4 is water.

Mol	Chain	Residues	Atoms		ZeroOcc	AltConf
4	A	27	Total	O	0	0
			27	27		
4	B	27	Total	O	0	0
			27	27		

4 Data and refinement statistics

Property	Value	Source
Space group	P 41	Depositor
Cell constants a, b, c, α , β , γ	57.12Å 57.12Å 164.86Å 90.00° 90.00° 90.00°	Depositor
Resolution (Å)	28.85 – 2.80 39.23 – 2.80	Depositor EDS
% Data completeness (in resolution range)	85.3 (28.85-2.80) 94.0 (39.23-2.80)	Depositor EDS
R_{merge}	0.08	Depositor
R_{sym}	(Not available)	Depositor
$\langle I/\sigma(I) \rangle$ ¹	2.44 (at 2.81Å)	Xtrriage
Refinement program	PHENIX (PHENIX.REFINE)	Depositor
R, R_{free}	0.185 , 0.240 0.182 , 0.180	Depositor DCC
R_{free} test set	598 reflections (4.89%)	wwPDB-VP
Wilson B-factor (Å ²)	48.3	Xtrriage
Anisotropy	0.433	Xtrriage
Bulk solvent k_{sol} (e/Å ³), B_{sol} (Å ²)	0.28 , 40.9	EDS
L-test for twinning ²	$\langle L \rangle = 0.49$, $\langle L^2 \rangle = 0.32$	Xtrriage
Estimated twinning fraction	0.068 for h,-k,-l	Xtrriage
F_o, F_c correlation	0.94	EDS
Total number of atoms	4244	wwPDB-VP
Average B, all atoms (Å ²)	49.0	wwPDB-VP

Xtrriage's analysis on translational NCS is as follows: *The largest off-origin peak in the Patterson function is 4.78% of the height of the origin peak. No significant pseudotranslation is detected.*

¹Intensities estimated from amplitudes.

²Theoretical values of $\langle |L| \rangle$, $\langle L^2 \rangle$ for acentric reflections are 0.5, 0.333 respectively for untwinned datasets, and 0.375, 0.2 for perfectly twinned datasets.

5 Model quality i

5.1 Standard geometry i

Bond lengths and bond angles in the following residue types are not validated in this section: MG, AGS

The Z score for a bond length (or angle) is the number of standard deviations the observed value is removed from the expected value. A bond length (or angle) with $|Z| > 5$ is considered an outlier worth inspection. RMSZ is the root-mean-square of all Z scores of the bond lengths (or angles).

Mol	Chain	Bond lengths		Bond angles	
		RMSZ	# Z >5	RMSZ	# Z >5
1	A	0.50	0/2100	1.21	28/2839 (1.0%)
1	B	0.49	0/2089	1.25	30/2825 (1.1%)
All	All	0.50	0/4189	1.23	58/5664 (1.0%)

There are no bond length outliers.

All (58) bond angle outliers are listed below:

Mol	Chain	Res	Type	Atoms	Z	Observed(°)	Ideal(°)
1	A	167	ARG	NE-CZ-NH2	-13.43	113.59	120.30
1	A	84	ARG	NE-CZ-NH2	-13.13	113.73	120.30
1	B	254	ARG	NE-CZ-NH2	-13.10	113.75	120.30
1	B	185	ARG	NE-CZ-NH1	13.06	126.83	120.30
1	B	185	ARG	NE-CZ-NH2	-12.83	113.89	120.30
1	A	84	ARG	NE-CZ-NH1	12.72	126.66	120.30
1	B	5	ARG	NE-CZ-NH1	-12.45	114.07	120.30
1	A	167	ARG	NE-CZ-NH1	12.41	126.51	120.30
1	B	120	ARG	NE-CZ-NH2	12.38	126.49	120.30
1	B	44	ARG	NE-CZ-NH2	12.37	126.49	120.30
1	A	185	ARG	NE-CZ-NH2	12.36	126.48	120.30
1	A	185	ARG	NE-CZ-NH1	-12.34	114.13	120.30
1	B	5	ARG	NE-CZ-NH2	11.99	126.30	120.30
1	A	254	ARG	NE-CZ-NH1	-11.97	114.31	120.30
1	B	44	ARG	NE-CZ-NH1	-11.94	114.33	120.30
1	B	198	ARG	NE-CZ-NH1	-11.89	114.35	120.30
1	B	120	ARG	NE-CZ-NH1	-11.75	114.42	120.30
1	B	254	ARG	NE-CZ-NH1	11.74	126.17	120.30
1	A	198	ARG	NE-CZ-NH1	11.66	126.13	120.30
1	A	198	ARG	NE-CZ-NH2	-11.63	114.48	120.30
1	A	120	ARG	NE-CZ-NH1	11.49	126.05	120.30
1	A	120	ARG	NE-CZ-NH2	-11.44	114.58	120.30

Continued on next page...

Continued from previous page...

Mol	Chain	Res	Type	Atoms	Z	Observed(°)	Ideal(°)
1	B	125	ARG	NE-CZ-NH2	-11.41	114.59	120.30
1	A	254	ARG	NE-CZ-NH2	11.27	125.94	120.30
1	B	198	ARG	NE-CZ-NH2	11.08	125.84	120.30
1	B	209	ARG	NE-CZ-NH1	-11.04	114.78	120.30
1	B	84	ARG	NE-CZ-NH1	-10.86	114.87	120.30
1	B	84	ARG	NE-CZ-NH2	10.83	125.71	120.30
1	B	125	ARG	NE-CZ-NH1	10.72	125.66	120.30
1	B	225	ARG	NE-CZ-NH2	-10.64	114.98	120.30
1	A	225	ARG	NE-CZ-NH1	-10.50	115.05	120.30
1	B	209	ARG	NE-CZ-NH2	10.45	125.53	120.30
1	A	125	ARG	NE-CZ-NH1	-10.09	115.25	120.30
1	B	167	ARG	NE-CZ-NH2	9.77	125.19	120.30
1	A	5	ARG	NE-CZ-NH1	9.72	125.16	120.30
1	A	209	ARG	NE-CZ-NH2	-9.48	115.56	120.30
1	A	44	ARG	NE-CZ-NH2	-9.46	115.57	120.30
1	B	225	ARG	NE-CZ-NH1	9.45	125.02	120.30
1	B	167	ARG	NE-CZ-NH1	-9.37	115.61	120.30
1	A	44	ARG	NE-CZ-NH1	9.30	124.95	120.30
1	A	125	ARG	NE-CZ-NH2	9.28	124.94	120.30
1	A	5	ARG	NE-CZ-NH2	-8.93	115.84	120.30
1	A	225	ARG	NE-CZ-NH2	8.62	124.61	120.30
1	A	209	ARG	NE-CZ-NH1	8.33	124.46	120.30
1	B	185	ARG	CD-NE-CZ	6.63	132.88	123.60
1	B	120	ARG	CD-NE-CZ	6.59	132.82	123.60
1	A	84	ARG	CD-NE-CZ	6.57	132.80	123.60
1	A	167	ARG	CD-NE-CZ	6.28	132.40	123.60
1	B	254	ARG	CD-NE-CZ	6.27	132.38	123.60
1	B	44	ARG	CD-NE-CZ	6.03	132.05	123.60
1	A	185	ARG	CD-NE-CZ	5.96	131.94	123.60
1	A	120	ARG	CD-NE-CZ	5.90	131.87	123.60
1	B	5	ARG	CD-NE-CZ	5.87	131.82	123.60
1	B	198	ARG	CD-NE-CZ	5.84	131.77	123.60
1	A	254	ARG	CD-NE-CZ	5.83	131.76	123.60
1	B	84	ARG	CD-NE-CZ	5.73	131.62	123.60
1	A	198	ARG	CD-NE-CZ	5.37	131.11	123.60
1	B	125	ARG	CD-NE-CZ	5.17	130.84	123.60

There are no chirality outliers.

There are no planarity outliers.

5.2 Too-close contacts (i)

In the following table, the Non-H and H(model) columns list the number of non-hydrogen atoms and hydrogen atoms in the chain respectively. The H(added) column lists the number of hydrogen atoms added and optimized by MolProbity. The Clashes column lists the number of clashes within the asymmetric unit, whereas Symm-Clashes lists symmetry-related clashes.

Mol	Chain	Non-H	H(model)	H(added)	Clashes	Symm-Clashes
1	A	2067	2	2108	117	0
1	B	2056	1	2091	118	0
2	A	1	0	0	0	0
2	B	1	0	0	0	0
3	A	31	0	12	4	0
3	B	31	0	12	9	0
4	A	27	0	0	7	0
4	B	27	0	0	1	0
All	All	4241	3	4223	233	0

The all-atom clashscore is defined as the number of clashes found per 1000 atoms (including hydrogen atoms). The all-atom clashscore for this structure is 28.

All (233) close contacts within the same asymmetric unit are listed below, sorted by their clash magnitude.

Atom-1	Atom-2	Interatomic distance (Å)	Clash overlap (Å)
3:A:1272:AGS:PG	3:A:1272:AGS:S1G	1.53	1.52
3:B:1273:AGS:PG	3:B:1273:AGS:S1G	1.51	1.49
1:A:3:GLU:HA	4:A:2001:HOH:O	1.57	1.04
1:A:153:LEU:HD12	1:A:154:THR:N	1.78	0.97
1:A:21:ILE:HD13	1:A:132:PRO:HB3	1.47	0.95
1:B:21:ILE:HD13	1:B:132:PRO:HB3	1.49	0.94
1:B:240:GLN:C	1:B:240:GLN:HE21	1.71	0.93
1:A:94:GLU:OE1	1:A:94:GLU:HA	1.67	0.93
1:B:94:GLU:OE1	1:B:94:GLU:HA	1.70	0.92
1:B:4:THR:HG23	1:B:104:CYS:O	1.71	0.90
1:B:74:LEU:N	1:B:74:LEU:HD23	1.85	0.90
1:A:4:THR:HG23	1:A:104:CYS:O	1.72	0.88
1:A:74:LEU:N	1:A:74:LEU:HD23	1.90	0.85
1:B:59:LEU:HD21	1:B:66:LEU:HD12	1.60	0.83
1:B:239:PRO:HA	1:B:244:VAL:HG21	1.58	0.83
1:A:21:ILE:CD1	1:A:132:PRO:HB3	2.08	0.83
1:B:21:ILE:CD1	1:B:132:PRO:HB3	2.10	0.81
1:A:245:PRO:HG2	1:B:194:ARG:NH1	1.99	0.78
1:B:116:SER:O	1:B:120:ARG:HG3	1.83	0.77

Continued on next page...

Continued from previous page...

Atom-1	Atom-2	Interatomic distance (Å)	Clash overlap (Å)
1:B:239:PRO:CA	1:B:244:VAL:HG11	2.16	0.75
1:B:12:GLU:HG2	1:B:142:MET:HE2	1.68	0.74
1:A:238:SER:HB2	1:A:239:PRO:HD2	1.69	0.73
1:B:246:VAL:HG11	1:B:251:LEU:HD21	1.70	0.73
1:A:12:GLU:HG2	1:A:142:MET:HE2	1.70	0.73
1:A:59:LEU:HD21	1:A:66:LEU:HD12	1.70	0.72
1:B:265:GLY:O	1:B:266:LEU:HD12	1.89	0.72
1:B:239:PRO:HA	1:B:244:VAL:HG11	1.72	0.71
3:B:1273:AGS:S1G	3:B:1273:AGS:O3B	2.48	0.71
1:A:153:LEU:HD12	1:A:153:LEU:C	2.11	0.70
1:B:147:ASP:O	1:B:151:LEU:HA	1.92	0.70
1:B:124:GLY:O	1:B:170:ARG:HG2	1.93	0.69
1:A:64:ILE:HG13	1:A:65:GLU:N	2.06	0.69
1:A:131:THR:O	1:A:131:THR:HG22	1.93	0.69
1:A:124:GLY:O	1:A:170:ARG:HG2	1.92	0.68
3:A:1272:AGS:S1G	3:A:1272:AGS:O3B	2.51	0.68
1:B:221:ARG:HH12	1:B:256:GLU:CD	1.96	0.68
1:B:255:GLN:NE2	1:B:255:GLN:HA	2.09	0.67
1:A:145:THR:HG22	1:A:154:THR:CG2	2.24	0.67
1:B:64:ILE:HG13	1:B:65:GLU:N	2.09	0.67
1:A:126:ALA:O	1:A:179:MET:HG3	1.94	0.66
1:A:184:LEU:HD13	1:A:184:LEU:H	1.61	0.66
1:A:265:GLY:O	1:A:266:LEU:HD12	1.96	0.65
1:B:99:ARG:HG2	1:B:99:ARG:O	1.95	0.65
1:A:225:ARG:HD3	1:B:136:SER:HB2	1.78	0.65
1:B:152:GLU:HG2	1:B:153:LEU:O	1.96	0.65
1:A:164:TRP:HE3	4:A:2018:HOH:O	1.81	0.64
1:B:255:GLN:CA	1:B:255:GLN:HE21	2.08	0.64
1:A:171:ALA:O	1:A:172:LEU:HD23	1.97	0.64
1:A:27:THR:HG21	1:A:233:THR:OG1	1.98	0.64
1:B:12:GLU:HG2	1:B:142:MET:CE	2.28	0.64
1:A:84:ARG:HD3	1:A:88:GLU:OE2	1.98	0.63
1:A:99:ARG:O	1:A:99:ARG:HG2	1.97	0.63
1:B:128:LEU:HD13	1:B:180:ASP:HB3	1.79	0.63
1:B:27:THR:HG21	1:B:233:THR:OG1	1.98	0.63
1:A:145:THR:HG22	1:A:154:THR:HG22	1.80	0.63
1:B:239:PRO:HA	1:B:244:VAL:CG2	2.28	0.63
1:A:94:GLU:OE1	1:A:94:GLU:CA	2.45	0.63
1:A:151:LEU:O	1:A:152:GLU:HG3	1.99	0.63
1:B:246:VAL:CG1	1:B:251:LEU:HD21	2.28	0.62
1:B:186:ASN:HD21	3:B:1273:AGS:HN61	1.46	0.62

Continued on next page...

Continued from previous page...

Atom-1	Atom-2	Interatomic distance (Å)	Clash overlap (Å)
1:A:155:LYS:HG3	1:A:156:PRO:O	2.00	0.61
1:B:264:LEU:O	1:B:266:LEU:HD13	2.01	0.61
1:A:225:ARG:CD	1:B:136:SER:HB2	2.30	0.61
1:B:238:SER:HB3	1:B:239:PRO:HD2	1.83	0.61
1:B:150:THR:HG22	1:B:152:GLU:H	1.64	0.60
1:A:242:ARG:HB2	1:A:242:ARG:CZ	2.31	0.60
1:A:255:GLN:NE2	1:A:255:GLN:HA	2.15	0.60
1:A:264:LEU:O	1:A:266:LEU:HD13	2.01	0.60
1:B:239:PRO:N	1:B:244:VAL:HG11	2.17	0.60
1:A:221:ARG:HH12	1:A:256:GLU:CD	2.04	0.60
1:A:248:LEU:HD23	1:A:248:LEU:O	2.01	0.59
1:B:186:ASN:HD22	1:B:218:LEU:HB2	1.67	0.59
1:B:155:LYS:HG3	1:B:156:PRO:O	2.03	0.59
1:A:185:ARG:HH12	1:A:200:GLU:HB2	1.68	0.58
1:A:14:GLY:HA2	3:A:1272:AGS:S1G	2.43	0.58
1:A:20:THR:O	1:A:24:HIS:HD2	1.86	0.58
1:A:255:GLN:HE21	1:A:255:GLN:CA	2.14	0.58
1:B:94:GLU:OE1	1:B:94:GLU:CA	2.49	0.58
1:B:255:GLN:NE2	1:B:255:GLN:CA	2.65	0.58
3:B:1273:AGS:S1G	3:B:1273:AGS:O3G	2.52	0.58
1:A:245:PRO:HG2	1:B:194:ARG:CZ	2.33	0.57
1:A:186:ASN:HD22	1:A:218:LEU:HB2	1.69	0.57
3:B:1273:AGS:S1G	3:B:1273:AGS:PB	3.02	0.57
1:A:51:PHE:CE1	1:A:231:GLY:HA2	2.40	0.57
1:B:45:GLN:HG3	4:B:2007:HOH:O	2.05	0.57
1:A:185:ARG:HG3	4:A:2021:HOH:O	2.05	0.56
3:B:1273:AGS:S1G	3:B:1273:AGS:O2B	2.63	0.56
1:B:174:GLY:O	1:B:175:GLN:CG	2.53	0.56
1:A:56:ARG:HE	1:A:56:ARG:HA	1.71	0.56
1:A:128:LEU:HD13	1:A:180:ASP:HB3	1.87	0.56
1:B:51:PHE:CE1	1:B:231:GLY:HA2	2.41	0.55
1:B:56:ARG:HE	1:B:56:ARG:HA	1.72	0.55
1:B:234:ILE:HD13	1:B:257:LEU:CD2	2.36	0.55
1:B:171:ALA:O	1:B:172:LEU:HD23	2.07	0.55
1:A:21:ILE:CD1	1:A:132:PRO:CB	2.84	0.54
1:A:105:ASP:OD2	1:A:105:ASP:N	2.39	0.54
1:A:255:GLN:NE2	1:A:255:GLN:CA	2.70	0.54
1:B:184:LEU:HD13	1:B:184:LEU:H	1.73	0.54
1:B:105:ASP:N	1:B:105:ASP:OD2	2.40	0.53
1:A:234:ILE:HD13	1:A:257:LEU:CD2	2.38	0.53
1:A:74:LEU:N	1:A:74:LEU:CD2	2.63	0.53

Continued on next page...

Continued from previous page...

Atom-1	Atom-2	Interatomic distance (Å)	Clash overlap (Å)
1:B:252:ALA:O	1:B:255:GLN:HB2	2.07	0.53
1:A:164:TRP:CE3	4:A:2018:HOH:O	2.54	0.53
1:A:234:ILE:HD11	1:A:257:LEU:HD21	1.91	0.53
1:B:239:PRO:HA	1:B:244:VAL:CB	2.39	0.53
1:A:13:LYS:HD2	4:A:2002:HOH:O	2.08	0.52
1:B:239:PRO:HA	1:B:244:VAL:CG1	2.38	0.52
1:B:247:SER:O	1:B:251:LEU:HG	2.09	0.52
1:A:12:GLU:HG2	1:A:142:MET:CE	2.37	0.52
1:B:234:ILE:HD11	1:B:257:LEU:HD21	1.91	0.52
1:B:174:GLY:O	1:B:175:GLN:CB	2.58	0.52
1:A:266:LEU:N	1:A:266:LEU:CD1	2.73	0.52
1:A:186:ASN:HD21	3:A:1272:AGS:HN61	1.57	0.51
1:B:234:ILE:CD1	1:B:257:LEU:CD2	2.89	0.51
1:B:150:THR:O	1:B:151:LEU:CB	2.58	0.51
1:B:56:ARG:HA	1:B:56:ARG:NE	2.26	0.51
1:A:268:ALA:HB3	1:A:269:TYR:CE2	2.46	0.51
1:B:181:TRP:HZ3	1:B:210:VAL:CG1	2.23	0.51
1:A:234:ILE:CD1	1:A:257:LEU:CD2	2.89	0.51
1:A:56:ARG:HA	1:A:56:ARG:NE	2.25	0.51
1:A:181:TRP:HZ3	1:A:210:VAL:CG1	2.24	0.51
1:A:265:GLY:C	1:A:266:LEU:CD1	2.79	0.51
1:B:265:GLY:C	1:B:266:LEU:HD12	2.31	0.51
1:A:15:GLY:HA3	1:B:15:GLY:HA3	1.93	0.50
1:B:70:LEU:C	1:B:70:LEU:HD22	2.32	0.50
1:A:184:LEU:N	1:A:184:LEU:CD1	2.74	0.50
1:A:184:LEU:H	1:A:184:LEU:CD1	2.23	0.50
1:B:31:TYR:OH	1:B:66:LEU:HD22	2.12	0.50
1:A:246:VAL:CG1	1:A:247:SER:N	2.75	0.49
1:B:265:GLY:C	1:B:266:LEU:CD1	2.80	0.49
1:B:26:VAL:HG21	1:B:38:VAL:HG22	1.94	0.49
1:A:56:ARG:HE	1:A:56:ARG:CA	2.26	0.49
1:A:265:GLY:C	1:A:266:LEU:HD12	2.32	0.49
1:A:9:VAL:HG21	1:A:22:ALA:HB2	1.95	0.49
1:B:73:ASN:C	1:B:74:LEU:HD23	2.33	0.49
1:A:26:VAL:HG21	1:A:38:VAL:HG22	1.93	0.48
1:A:141:ASP:OD2	1:B:50:ARG:NH2	2.46	0.48
1:B:238:SER:HB3	1:B:240:GLN:HG3	1.96	0.48
1:B:21:ILE:HD13	1:B:132:PRO:CB	2.32	0.48
1:B:56:ARG:HE	1:B:56:ARG:CA	2.26	0.48
1:A:70:LEU:C	1:A:70:LEU:HD22	2.34	0.48
1:A:191:THR:O	1:A:193:ALA:N	2.47	0.48

Continued on next page...

Continued from previous page...

Atom-1	Atom-2	Interatomic distance (Å)	Clash overlap (Å)
1:B:36:VAL:HG12	1:B:37:ALA:N	2.29	0.48
1:B:221:ARG:H	3:B:1273:AGS:C2	2.27	0.48
1:A:171:ALA:C	1:A:172:LEU:HD23	2.34	0.48
1:B:145:THR:HG22	1:B:154:THR:CG2	2.44	0.47
1:A:21:ILE:HD13	1:A:132:PRO:CB	2.32	0.47
1:A:169:GLN:HG2	1:A:169:GLN:O	2.14	0.47
1:A:31:TYR:OH	1:A:66:LEU:HD22	2.14	0.47
1:B:131:THR:HG22	1:B:131:THR:O	2.14	0.47
1:A:111:THR:HB	1:A:112:PRO:CD	2.44	0.47
1:B:210:VAL:CG1	1:B:210:VAL:O	2.62	0.47
1:B:238:SER:CB	1:B:239:PRO:HD2	2.43	0.47
1:B:20:THR:O	1:B:24:HIS:HD2	1.99	0.47
1:B:268:ALA:HB3	1:B:269:TYR:CE2	2.49	0.47
1:A:152:GLU:HG2	1:A:202:ARG:CZ	2.45	0.46
1:B:115:ASP:OD1	1:B:120:ARG:NH2	2.45	0.46
1:B:21:ILE:CD1	1:B:132:PRO:CB	2.88	0.46
1:A:242:ARG:O	1:A:242:ARG:HG3	2.16	0.46
1:B:210:VAL:O	1:B:210:VAL:HG12	2.15	0.46
1:B:13:LYS:HG3	1:B:139:ASP:HA	1.97	0.46
1:B:111:THR:HB	1:B:112:PRO:CD	2.45	0.46
1:A:124:GLY:O	1:A:170:ARG:CG	2.62	0.45
1:A:185:ARG:HH12	1:A:200:GLU:CB	2.28	0.45
1:A:25:LEU:HD12	1:A:25:LEU:HA	1.35	0.45
1:A:116:SER:O	1:A:120:ARG:HG3	2.16	0.45
1:A:81:LEU:HD12	1:A:84:ARG:HG3	1.97	0.45
1:B:151:LEU:HA	1:B:151:LEU:HD12	1.82	0.45
1:B:191:THR:O	1:B:193:ALA:N	2.49	0.45
1:A:257:LEU:HD12	1:A:257:LEU:HA	1.81	0.45
1:A:36:VAL:HG12	1:A:37:ALA:N	2.31	0.45
1:A:64:ILE:CD1	1:A:241:VAL:HG22	2.47	0.45
1:B:87:GLU:HG3	1:B:88:GLU:N	2.32	0.45
1:A:107:ILE:N	1:A:107:ILE:HD12	2.32	0.45
1:B:222:VAL:O	1:B:226:GLU:HB2	2.16	0.45
1:A:153:LEU:CD1	1:A:154:THR:N	2.66	0.45
1:B:169:GLN:O	1:B:169:GLN:HG2	2.16	0.45
1:A:30:LEU:HD12	1:A:30:LEU:HA	1.74	0.45
1:B:266:LEU:CD1	1:B:266:LEU:N	2.79	0.44
1:B:11:ASN:N	1:B:18:LYS:HD3	2.33	0.44
1:B:107:ILE:HD12	1:B:107:ILE:N	2.32	0.44
1:A:35:LYS:HB2	1:A:35:LYS:HE3	1.81	0.44
1:A:185:ARG:NH1	1:A:200:GLU:HB2	2.31	0.44

Continued on next page...

Continued from previous page...

Atom-1	Atom-2	Interatomic distance (Å)	Clash overlap (Å)
1:B:9:VAL:HG21	1:B:22:ALA:HB2	1.99	0.44
1:B:174:GLY:O	1:B:175:GLN:HG2	2.17	0.44
1:A:219:ARG:HE	1:A:219:ARG:HB3	1.57	0.44
1:B:30:LEU:HD12	1:B:30:LEU:HA	1.66	0.44
1:B:75:SER:OG	1:B:81:LEU:HD22	2.17	0.44
1:B:150:THR:HG22	1:B:152:GLU:N	2.33	0.44
1:B:181:TRP:HZ3	1:B:210:VAL:HG12	1.82	0.44
1:A:152:GLU:HG2	1:A:202:ARG:NH1	2.33	0.43
1:A:186:ASN:ND2	1:A:218:LEU:HB2	2.32	0.43
1:B:147:ASP:HB3	1:B:151:LEU:H	1.83	0.43
1:B:219:ARG:HE	1:B:219:ARG:HB3	1.54	0.43
1:A:13:LYS:HG3	1:A:139:ASP:HA	1.99	0.43
1:B:18:LYS:HB2	1:B:18:LYS:HE2	1.77	0.43
1:A:249:GLN:HE21	1:A:249:GLN:HB3	1.69	0.43
1:B:186:ASN:ND2	1:B:218:LEU:HB2	2.33	0.43
1:A:81:LEU:HD12	1:A:81:LEU:O	2.19	0.43
1:A:84:ARG:HD2	4:A:2009:HOH:O	2.18	0.43
1:B:234:ILE:CD1	1:B:257:LEU:HD21	2.48	0.43
1:B:216:PRO:HD2	1:B:260:LEU:HD23	2.01	0.42
1:B:221:ARG:H	3:B:1273:AGS:H2	1.84	0.42
1:B:239:PRO:CA	1:B:244:VAL:HG21	2.40	0.42
1:A:222:VAL:HG22	1:B:192:GLU:HG2	2.01	0.42
1:B:35:LYS:HB2	1:B:35:LYS:HE3	1.80	0.42
1:A:234:ILE:CD1	1:A:257:LEU:HD21	2.50	0.42
1:B:81:LEU:HD12	1:B:81:LEU:O	2.19	0.42
1:B:186:ASN:ND2	3:B:1273:AGS:HN61	2.15	0.42
1:A:18:LYS:HB2	1:A:18:LYS:HE2	1.83	0.42
1:A:210:VAL:CG1	1:A:210:VAL:O	2.67	0.42
1:A:11:ASN:N	1:A:18:LYS:HD3	2.35	0.42
1:B:124:GLY:O	1:B:170:ARG:CG	2.63	0.42
1:B:184:LEU:H	1:B:184:LEU:CD1	2.33	0.42
1:A:134:ASN:HB2	1:A:139:ASP:OD2	2.20	0.42
1:A:99:ARG:HD3	4:A:2013:HOH:O	2.20	0.41
1:A:184:LEU:HD13	1:A:184:LEU:N	2.28	0.41
1:B:60:ASP:OD1	1:B:60:ASP:C	2.59	0.41
1:A:50:ARG:NH2	1:B:141:ASP:OD2	2.53	0.41
1:A:266:LEU:HD13	1:A:266:LEU:N	2.35	0.41
1:B:187:ARG:NH2	1:B:225:ARG:HH22	2.18	0.41
1:A:73:ASN:C	1:A:74:LEU:HD23	2.40	0.41
1:B:171:ALA:C	1:B:172:LEU:HD23	2.41	0.41
1:B:221:ARG:NH1	1:B:256:GLU:CD	2.71	0.41

Continued on next page...

Continued from previous page...

Atom-1	Atom-2	Interatomic distance (Å)	Clash overlap (Å)
1:A:106:PHE:C	1:A:107:ILE:HD12	2.40	0.41
1:B:16:ALA:HB1	1:B:132:PRO:O	2.20	0.41
1:A:75:SER:OG	1:A:81:LEU:HD22	2.21	0.41
1:A:87:GLU:HG3	1:A:88:GLU:N	2.35	0.41
1:A:19:SER:HA	1:A:110:ASP:OD2	2.21	0.41
1:A:252:ALA:O	1:A:255:GLN:HB2	2.20	0.41
1:A:66:LEU:HB3	1:A:67:PRO:HD2	2.03	0.41
1:A:225:ARG:HD2	1:B:136:SER:HB2	2.01	0.41
1:B:25:LEU:HD12	1:B:25:LEU:HA	1.35	0.40

There are no symmetry-related clashes.

5.3 Torsion angles [i](#)

5.3.1 Protein backbone [i](#)

In the following table, the Percentiles column shows the percent Ramachandran outliers of the chain as a percentile score with respect to all X-ray entries followed by that with respect to entries of similar resolution.

The Analysed column shows the number of residues for which the backbone conformation was analysed, and the total number of residues.

Mol	Chain	Analysed	Favoured	Allowed	Outliers	Percentiles	
1	A	259/286 (91%)	229 (88%)	25 (10%)	5 (2%)	8	26
1	B	259/286 (91%)	226 (87%)	27 (10%)	6 (2%)	6	21
All	All	518/572 (91%)	455 (88%)	52 (10%)	11 (2%)	7	23

All (11) Ramachandran outliers are listed below:

Mol	Chain	Res	Type
1	A	177	GLN
1	A	190	THR
1	B	151	LEU
1	B	174	GLY
1	B	190	THR
1	B	270	SER
1	B	192	GLU
1	A	4	THR
1	A	174	GLY

Continued on next page...

Continued from previous page...

Mol	Chain	Res	Type
1	A	178	ALA
1	B	191	THR

5.3.2 Protein sidechains [i](#)

In the following table, the Percentiles column shows the percent sidechain outliers of the chain as a percentile score with respect to all X-ray entries followed by that with respect to entries of similar resolution.

The Analysed column shows the number of residues for which the sidechain conformation was analysed, and the total number of residues.

Mol	Chain	Analysed	Rotameric	Outliers	Percentiles	
1	A	216/232 (93%)	181 (84%)	35 (16%)	2	7
1	B	215/232 (93%)	181 (84%)	34 (16%)	2	8
All	All	431/464 (93%)	362 (84%)	69 (16%)	2	7

All (69) residues with a non-rotameric sidechain are listed below:

Mol	Chain	Res	Type
1	A	4	THR
1	A	25	LEU
1	A	27	THR
1	A	30	LEU
1	A	50	ARG
1	A	64	ILE
1	A	70	LEU
1	A	72	LEU
1	A	74	LEU
1	A	78	ASP
1	A	84	ARG
1	A	94	GLU
1	A	101	MET
1	A	105	ASP
1	A	108	LEU
1	A	119	THR
1	A	121	MET
1	A	145	THR
1	A	153	LEU
1	A	158	LEU
1	A	164	TRP

Continued on next page...

Continued from previous page...

Mol	Chain	Res	Type
1	A	170	ARG
1	A	184	LEU
1	A	191	THR
1	A	203	LEU
1	A	209	ARG
1	A	225	ARG
1	A	234	ILE
1	A	242	ARG
1	A	244	VAL
1	A	249	GLN
1	A	255	GLN
1	A	257	LEU
1	A	260	LEU
1	A	266	LEU
1	B	4	THR
1	B	25	LEU
1	B	27	THR
1	B	30	LEU
1	B	50	ARG
1	B	64	ILE
1	B	70	LEU
1	B	72	LEU
1	B	74	LEU
1	B	78	ASP
1	B	84	ARG
1	B	94	GLU
1	B	101	MET
1	B	105	ASP
1	B	108	LEU
1	B	119	THR
1	B	121	MET
1	B	154	THR
1	B	158	LEU
1	B	164	TRP
1	B	170	ARG
1	B	175	GLN
1	B	184	LEU
1	B	191	THR
1	B	203	LEU
1	B	209	ARG
1	B	225	ARG
1	B	234	ILE

Continued on next page...

Continued from previous page...

Mol	Chain	Res	Type
1	B	240	GLN
1	B	249	GLN
1	B	255	GLN
1	B	257	LEU
1	B	260	LEU
1	B	266	LEU

Sometimes sidechains can be flipped to improve hydrogen bonding and reduce clashes. All (11) such sidechains are listed below:

Mol	Chain	Res	Type
1	A	24	HIS
1	A	45	GLN
1	A	186	ASN
1	A	249	GLN
1	A	255	GLN
1	B	24	HIS
1	B	45	GLN
1	B	186	ASN
1	B	240	GLN
1	B	249	GLN
1	B	255	GLN

5.3.3 RNA [i](#)

There are no RNA molecules in this entry.

5.4 Non-standard residues in protein, DNA, RNA chains [i](#)

There are no non-standard protein/DNA/RNA residues in this entry.

5.5 Carbohydrates [i](#)

There are no monosaccharides in this entry.

5.6 Ligand geometry [i](#)

Of 4 ligands modelled in this entry, 2 are monoatomic - leaving 2 for Mogul analysis.

In the following table, the Counts columns list the number of bonds (or angles) for which Mogul statistics could be retrieved, the number of bonds (or angles) that are observed in the model and the number of bonds (or angles) that are defined in the Chemical Component Dictionary. The Link column lists molecule types, if any, to which the group is linked. The Z score for a bond length (or angle) is the number of standard deviations the observed value is removed from the expected value. A bond length (or angle) with $|Z| > 2$ is considered an outlier worth inspection. RMSZ is the root-mean-square of all Z scores of the bond lengths (or angles).

Mol	Type	Chain	Res	Link	Bond lengths			Bond angles		
					Counts	RMSZ	# Z > 2	Counts	RMSZ	# Z > 2
3	AGS	A	1272	2	26,33,33	3.51	2 (7%)	26,52,52	1.49	5 (19%)
3	AGS	B	1273	2	26,33,33	3.74	4 (15%)	26,52,52	1.48	5 (19%)

In the following table, the Chirals column lists the number of chiral outliers, the number of chiral centers analysed, the number of these observed in the model and the number defined in the Chemical Component Dictionary. Similar counts are reported in the Torsion and Rings columns. '-' means no outliers of that kind were identified.

Mol	Type	Chain	Res	Link	Chirals	Torsions	Rings
3	AGS	A	1272	2	-	3/17/38/38	0/3/3/3
3	AGS	B	1273	2	-	3/17/38/38	0/3/3/3

All (6) bond length outliers are listed below:

Mol	Chain	Res	Type	Atoms	Z	Observed(Å)	Ideal(Å)
3	B	1273	AGS	PG-S1G	-18.12	1.51	1.90
3	A	1272	AGS	PG-S1G	-17.17	1.53	1.90
3	A	1272	AGS	C5-C4	2.47	1.47	1.40
3	B	1273	AGS	C5-C4	2.35	1.47	1.40
3	B	1273	AGS	O4'-C1'	2.27	1.44	1.41
3	B	1273	AGS	C2'-C1'	-2.09	1.50	1.53

All (10) bond angle outliers are listed below:

Mol	Chain	Res	Type	Atoms	Z	Observed(°)	Ideal(°)
3	A	1272	AGS	N3-C2-N1	-3.89	122.59	128.68
3	B	1273	AGS	C4-C5-N7	-3.15	106.11	109.40
3	B	1273	AGS	O2'-C2'-C3'	-3.00	102.13	111.82
3	B	1273	AGS	PA-O3A-PB	-2.90	122.87	132.83
3	A	1272	AGS	C2-N1-C6	2.86	123.65	118.75
3	B	1273	AGS	N3-C2-N1	-2.56	124.68	128.68
3	A	1272	AGS	O2B-PB-O1B	2.49	124.57	112.24
3	B	1273	AGS	O2B-PB-O1B	2.44	124.31	112.24

Continued on next page...

Continued from previous page...

Mol	Chain	Res	Type	Atoms	Z	Observed(°)	Ideal(°)
3	A	1272	AGS	C2'-C3'-C4'	2.27	107.06	102.64
3	A	1272	AGS	N6-C6-N1	2.20	123.14	118.57

There are no chirality outliers.

All (6) torsion outliers are listed below:

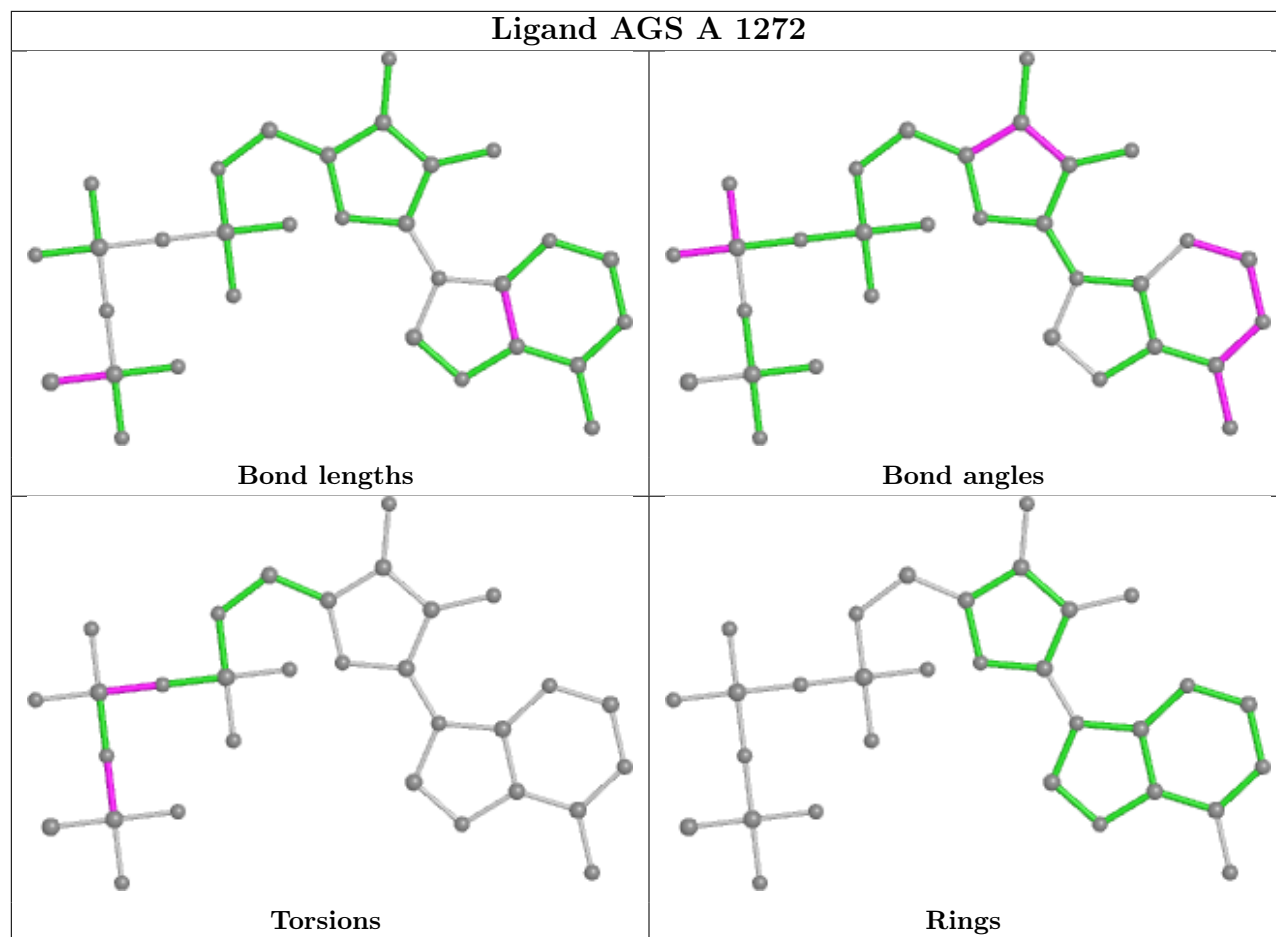
Mol	Chain	Res	Type	Atoms
3	A	1272	AGS	PB-O3B-PG-O2G
3	A	1272	AGS	PB-O3B-PG-O3G
3	B	1273	AGS	PB-O3B-PG-O3G
3	B	1273	AGS	PA-O3A-PB-O1B
3	A	1272	AGS	PA-O3A-PB-O2B
3	B	1273	AGS	PA-O3A-PB-O2B

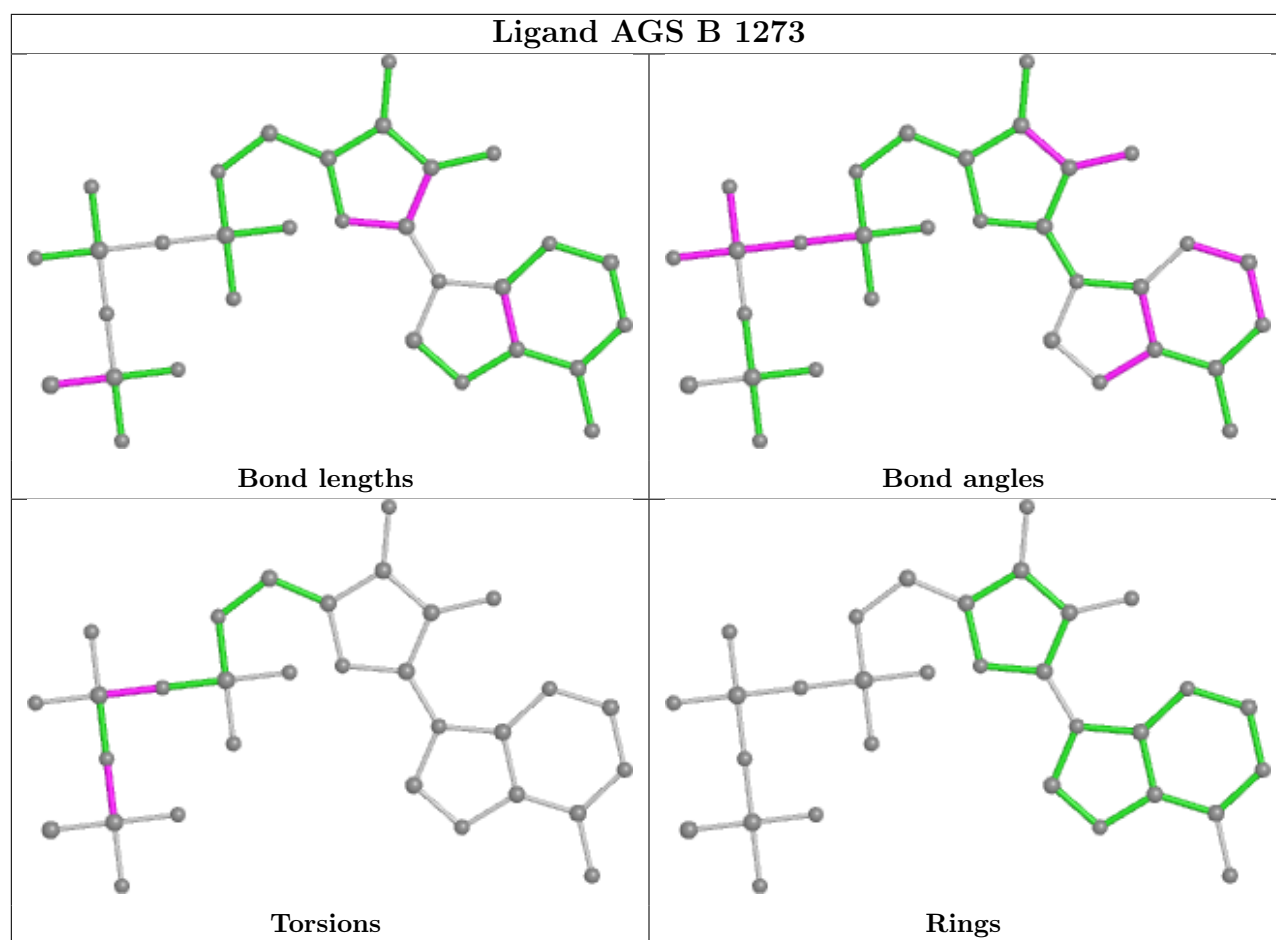
There are no ring outliers.

2 monomers are involved in 13 short contacts:

Mol	Chain	Res	Type	Clashes	Symm-Clashes
3	A	1272	AGS	4	0
3	B	1273	AGS	9	0

The following is a two-dimensional graphical depiction of Mogul quality analysis of bond lengths, bond angles, torsion angles, and ring geometry for all instances of the Ligand of Interest. In addition, ligands with molecular weight > 250 and outliers as shown on the validation Tables will also be included. For torsion angles, if less than 5% of the Mogul distribution of torsion angles is within 10 degrees of the torsion angle in question, then that torsion angle is considered an outlier. Any bond that is central to one or more torsion angles identified as an outlier by Mogul will be highlighted in the graph. For rings, the root-mean-square deviation (RMSD) between the ring in question and similar rings identified by Mogul is calculated over all ring torsion angles. If the average RMSD is greater than 60 degrees and the minimal RMSD between the ring in question and any Mogul-identified rings is also greater than 60 degrees, then that ring is considered an outlier. The outliers are highlighted in purple. The color gray indicates Mogul did not find sufficient equivalents in the CSD to analyse the geometry.





5.7 Other polymers [i](#)

There are no such residues in this entry.

5.8 Polymer linkage issues [i](#)

There are no chain breaks in this entry.

6 Fit of model and data [i](#)

6.1 Protein, DNA and RNA chains [i](#)

In the following table, the column labelled ‘#RSRZ> 2’ contains the number (and percentage) of RSRZ outliers, followed by percent RSRZ outliers for the chain as percentile scores relative to all X-ray entries and entries of similar resolution. The OWAB column contains the minimum, median, 95th percentile and maximum values of the occupancy-weighted average B-factor per residue. The column labelled ‘Q< 0.9’ lists the number of (and percentage) of residues with an average occupancy less than 0.9.

Mol	Chain	Analysed	<RSRZ>	#RSRZ>2	OWAB(Å ²)	Q<0.9
1	A	265/286 (92%)	-0.36	4 (1%) 73 68	21, 45, 80, 102	0
1	B	265/286 (92%)	-0.45	0 100 100	22, 45, 84, 109	0
All	All	530/572 (92%)	-0.41	4 (0%) 86 81	21, 45, 84, 109	0

All (4) RSRZ outliers are listed below:

Mol	Chain	Res	Type	RSRZ
1	A	191	THR	3.6
1	A	195	ASN	2.7
1	A	270	SER	2.4
1	A	176	ARG	2.2

6.2 Non-standard residues in protein, DNA, RNA chains [i](#)

There are no non-standard protein/DNA/RNA residues in this entry.

6.3 Carbohydrates [i](#)

There are no monosaccharides in this entry.

6.4 Ligands [i](#)

In the following table, the Atoms column lists the number of modelled atoms in the group and the number defined in the chemical component dictionary. The B-factors column lists the minimum, median, 95th percentile and maximum values of B factors of atoms in the group. The column labelled ‘Q< 0.9’ lists the number of atoms with occupancy less than 0.9.

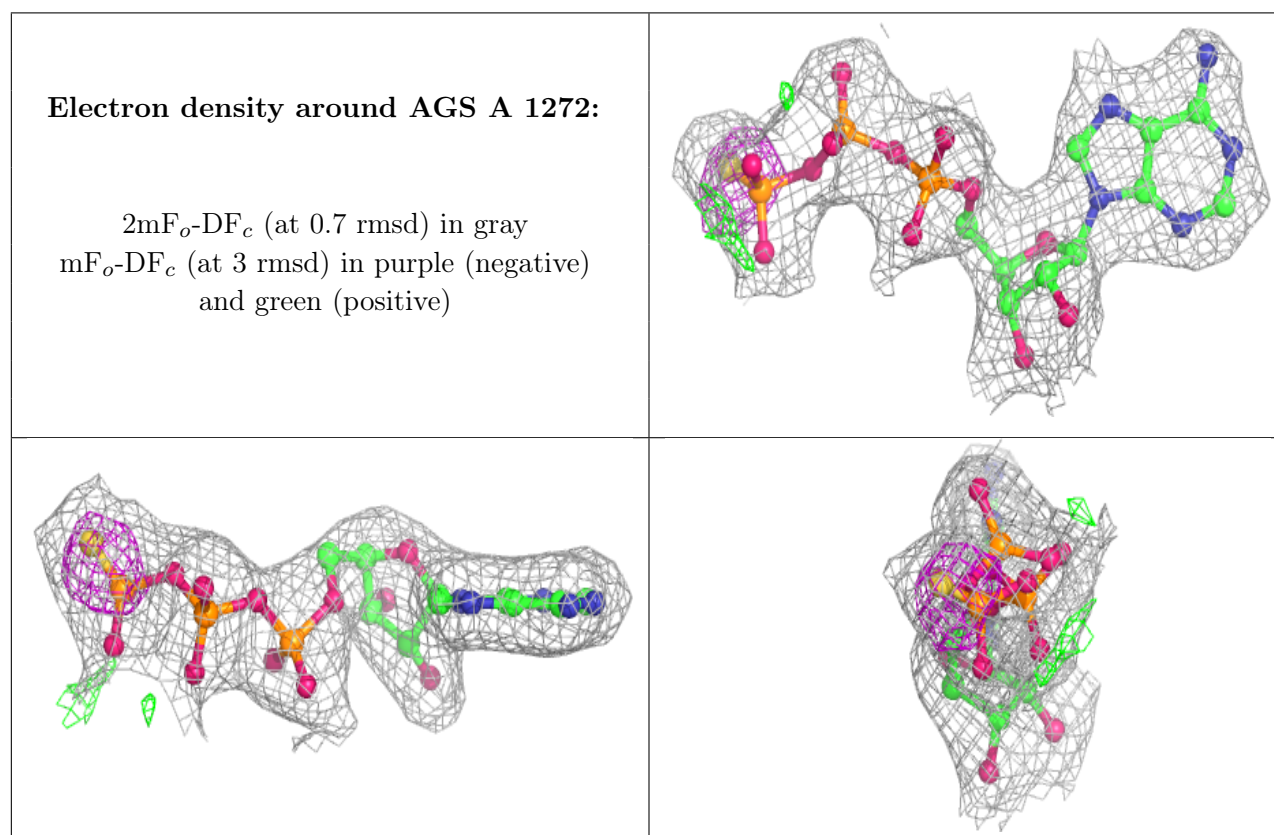
Mol	Type	Chain	Res	Atoms	RSCC	RSR	B-factors(Å ²)	Q<0.9
2	MG	B	1272	1/1	0.97	0.30	28,28,28,28	0

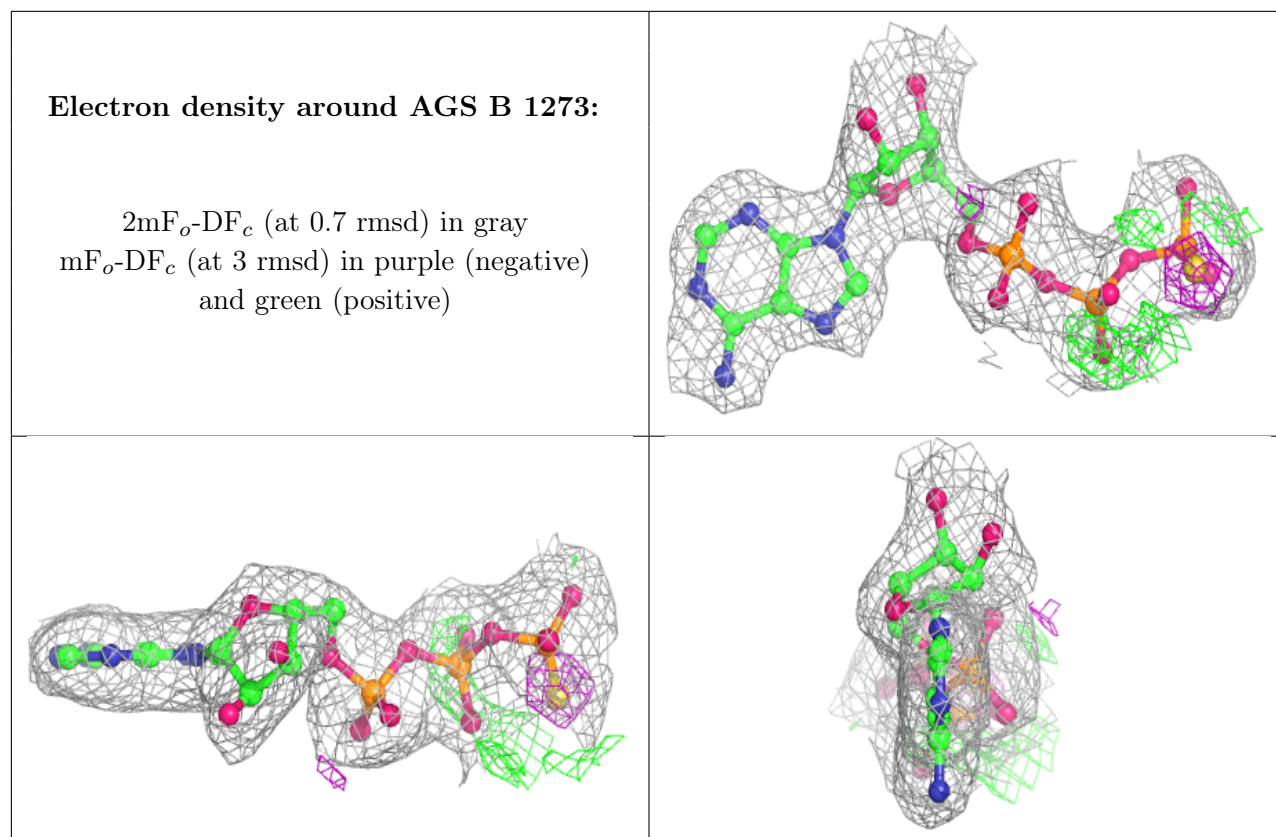
Continued on next page...

Continued from previous page...

Mol	Type	Chain	Res	Atoms	RSCC	RSR	B-factors(\AA^2)	Q<0.9
3	AGS	A	1272	31/31	0.97	0.17	16,23,34,39	0
3	AGS	B	1273	31/31	0.97	0.18	14,27,39,42	0
2	MG	A	1271	1/1	0.98	0.32	31,31,31,31	0

The following is a graphical depiction of the model fit to experimental electron density of all instances of the Ligand of Interest. In addition, ligands with molecular weight > 250 and outliers as shown on the geometry validation Tables will also be included. Each fit is shown from different orientation to approximate a three-dimensional view.





6.5 Other polymers [i](#)

There are no such residues in this entry.