



# Full wwPDB X-ray Structure Validation Report ⓘ

Nov 13, 2023 – 04:01 PM JST

PDB ID : 5XII  
Title : Crystal Structure of *Toxoplasma gondii* Prolyl-tRNA Synthetase (TgPRS) in complex with inhibitor 6  
Authors : Jain, V.; Manickam, Y.; Sharma, A.  
Deposited on : 2017-04-26  
Resolution : 2.17 Å(reported)

This is a Full wwPDB X-ray Structure Validation Report for a publicly released PDB entry.

We welcome your comments at [validation@mail.wwpdb.org](mailto:validation@mail.wwpdb.org)

A user guide is available at

<https://www.wwpdb.org/validation/2017/XrayValidationReportHelp>

with specific help available everywhere you see the ⓘ symbol.

The types of validation reports are described at

<http://www.wwpdb.org/validation/2017/FAQs#types>.

---

The following versions of software and data (see [references ⓘ](#)) were used in the production of this report:

MolProbity : 4.02b-467  
Mogul : 1.8.5 (274361), CSD as541be (2020)  
Xtrriage (Phenix) : 1.13  
EDS : 2.36  
buster-report : 1.1.7 (2018)  
Percentile statistics : 20191225.v01 (using entries in the PDB archive December 25th 2019)  
Refmac : 5.8.0158  
CCP4 : 7.0.044 (Gargrove)  
Ideal geometry (proteins) : Engh & Huber (2001)  
Ideal geometry (DNA, RNA) : Parkinson et al. (1996)  
Validation Pipeline (wwPDB-VP) : 2.36

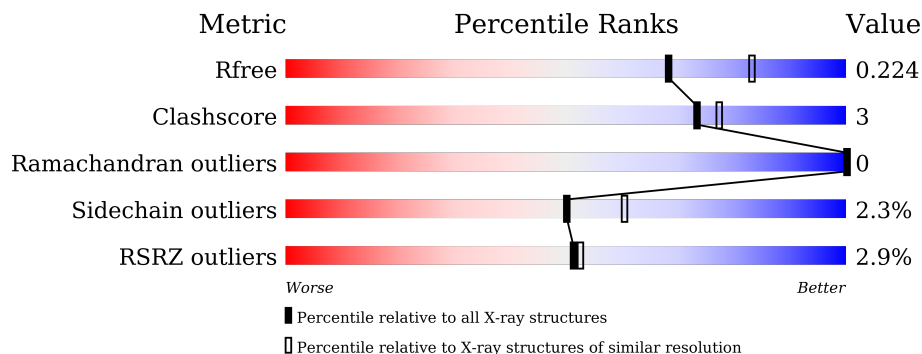
# 1 Overall quality at a glance

The following experimental techniques were used to determine the structure:

*X-RAY DIFFRACTION*

The reported resolution of this entry is 2.17 Å.

Percentile scores (ranging between 0-100) for global validation metrics of the entry are shown in the following graphic. The table shows the number of entries on which the scores are based.



Metric	Whole archive (#Entries)	Similar resolution (#Entries, resolution range(Å))
$R_{free}$	130704	6864 (2.20-2.16)
Clashscore	141614	7689 (2.20-2.16)
Ramachandran outliers	138981	7564 (2.20-2.16)
Sidechain outliers	138945	7564 (2.20-2.16)
RSRZ outliers	127900	6738 (2.20-2.16)

The table below summarises the geometric issues observed across the polymeric chains and their fit to the electron density. The red, orange, yellow and green segments of the lower bar indicate the fraction of residues that contain outliers for  $\geq 3$ , 2, 1 and 0 types of geometric quality criteria respectively. A grey segment represents the fraction of residues that are not modelled. The numeric value for each fraction is indicated below the corresponding segment, with a dot representing fractions  $\leq 5\%$ . The upper red bar (where present) indicates the fraction of residues that have poor fit to the electron density. The numeric value is given above the bar.

Mol	Chain	Length	Quality of chain
1	A	500	 5% 88% 7% 5%
1	B	500	 5% 85% 9% 6%
1	C	500	 4% 86% 9% .
1	D	500	 2% 86% 8% 5%

## 2 Entry composition i

There are 7 unique types of molecules in this entry. The entry contains 16481 atoms, of which 0 are hydrogens and 0 are deuteriums.

In the tables below, the ZeroOcc column contains the number of atoms modelled with zero occupancy, the AltConf column contains the number of residues with at least one atom in alternate conformation and the Trace column contains the number of residues modelled with at most 2 atoms.

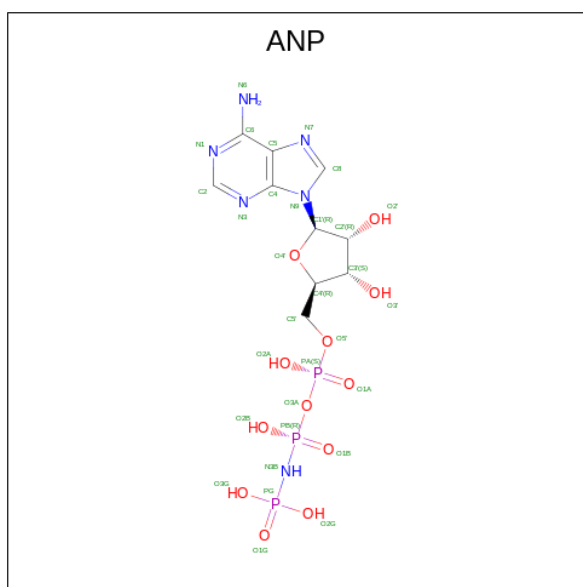
- Molecule 1 is a protein called Prolyl-tRNA synthetase (ProRS).

Mol	Chain	Residues	Atoms					ZeroOcc	AltConf	Trace
			Total	C	N	O	S			
1	A	476	3899	2509	666	702	22	0	5	0
1	B	471	3802	2448	651	681	22	0	2	0
1	C	479	3843	2474	654	694	21	0	6	0
1	D	474	3840	2470	658	690	22	0	3	0

There are 12 discrepancies between the modelled and reference sequences:

Chain	Residue	Modelled	Actual	Comment	Reference
A	331	GLY	-	expression tag	UNP S8G8I1
A	332	ALA	-	expression tag	UNP S8G8I1
A	333	MET	-	expression tag	UNP S8G8I1
B	331	GLY	-	expression tag	UNP S8G8I1
B	332	ALA	-	expression tag	UNP S8G8I1
B	333	MET	-	expression tag	UNP S8G8I1
C	331	GLY	-	expression tag	UNP S8G8I1
C	332	ALA	-	expression tag	UNP S8G8I1
C	333	MET	-	expression tag	UNP S8G8I1
D	331	GLY	-	expression tag	UNP S8G8I1
D	332	ALA	-	expression tag	UNP S8G8I1
D	333	MET	-	expression tag	UNP S8G8I1

- Molecule 2 is PHOSPHOAMINOPHOSPHONIC ACID-ADENYLATE ESTER (three-letter code: ANP) (formula:  $C_{10}H_{17}N_6O_{12}P_3$ ).

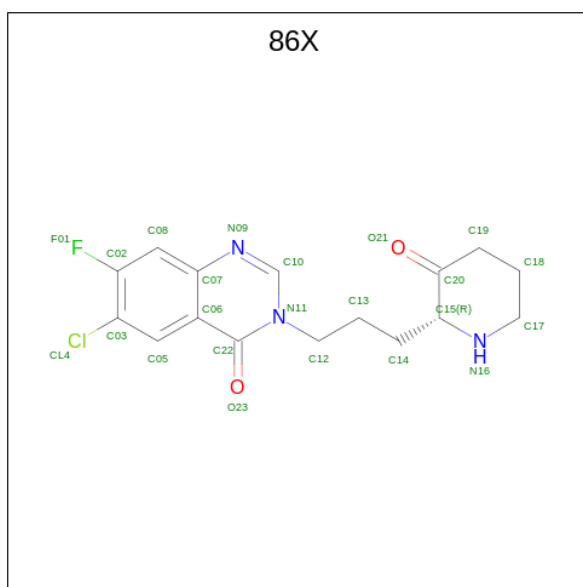


Mol	Chain	Residues	Atoms					ZeroOcc	AltConf
			Total	C	N	O	P		
2	A	1	31	10	6	12	3	0	0
2	B	1	31	10	6	12	3	0	0
2	C	1	31	10	6	12	3	0	0
2	D	1	31	10	6	12	3	0	0

- Molecule 3 is MAGNESIUM ION (three-letter code: MG) (formula: Mg).

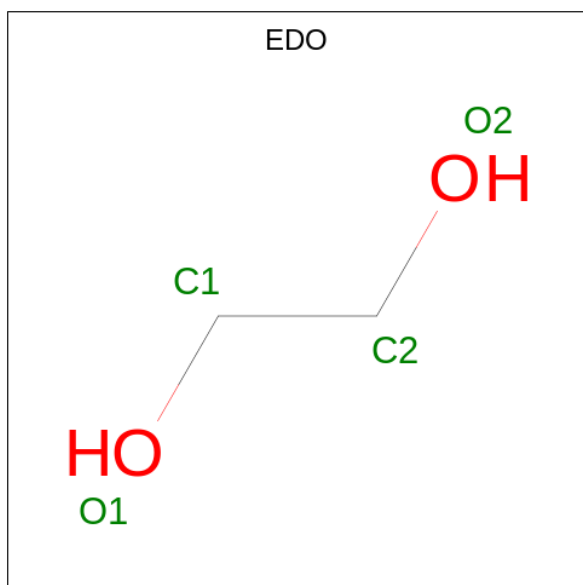
Mol	Chain	Residues	Atoms		ZeroOcc	AltConf
			Total	Mg		
3	A	2	2	2	0	0
3	B	2	2	2	0	0
3	C	2	2	2	0	0
3	D	2	2	2	0	0

- Molecule 4 is 6-chloranyl-7-fluoranyl-3-[3-[(2R)-3-oxidanylidene-piperidin-2-yl]propyl]quinazolin-4-one (three-letter code: 86X) (formula: C<sub>16</sub>H<sub>17</sub>ClFN<sub>3</sub>O<sub>2</sub>).



Mol	Chain	Residues	Atoms					ZeroOcc	AltConf	
			Total	C	Cl	F	N			O
4	A	1	Total	C	Cl	F	N	O	0	1
			46	32	2	2	6	4		
4	B	1	Total	C	Cl	F	N	O	0	1
			46	32	2	2	6	4		
4	C	1	Total	C	Cl	F	N	O	0	1
			46	32	2	2	6	4		
4	D	1	Total	C	Cl	F	N	O	0	1
			46	32	2	2	6	4		

- Molecule 5 is 1,2-ETHANEDIOL (three-letter code: EDO) (formula: C<sub>2</sub>H<sub>6</sub>O<sub>2</sub>).



Mol	Chain	Residues	Atoms	ZeroOcc	AltConf
5	A	1	Total C O 4 2 2	0	0
5	A	1	Total C O 4 2 2	0	0
5	A	1	Total C O 4 2 2	0	0
5	A	1	Total C O 4 2 2	0	0
5	A	1	Total C O 4 2 2	0	0
5	A	1	Total C O 4 2 2	0	0
5	B	1	Total C O 4 2 2	0	0
5	B	1	Total C O 4 2 2	0	0
5	B	1	Total C O 4 2 2	0	0
5	D	1	Total C O 4 2 2	0	0
5	D	1	Total C O 4 2 2	0	0

- Molecule 6 is CHLORIDE ION (three-letter code: CL) (formula: Cl).

Mol	Chain	Residues	Atoms	ZeroOcc	AltConf
6	B	2	Total Cl 2 2	0	0
6	C	1	Total Cl 1 1	0	0
6	D	4	Total Cl 4 4	0	0

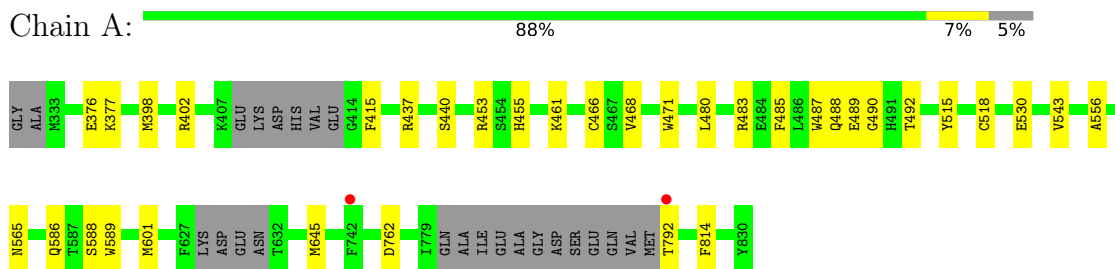
- Molecule 7 is water.

Mol	Chain	Residues	Atoms	ZeroOcc	AltConf
7	A	260	Total O 267 267	0	7
7	B	148	Total O 150 150	0	2
7	C	146	Total O 146 146	0	0
7	D	162	Total O 167 167	0	5

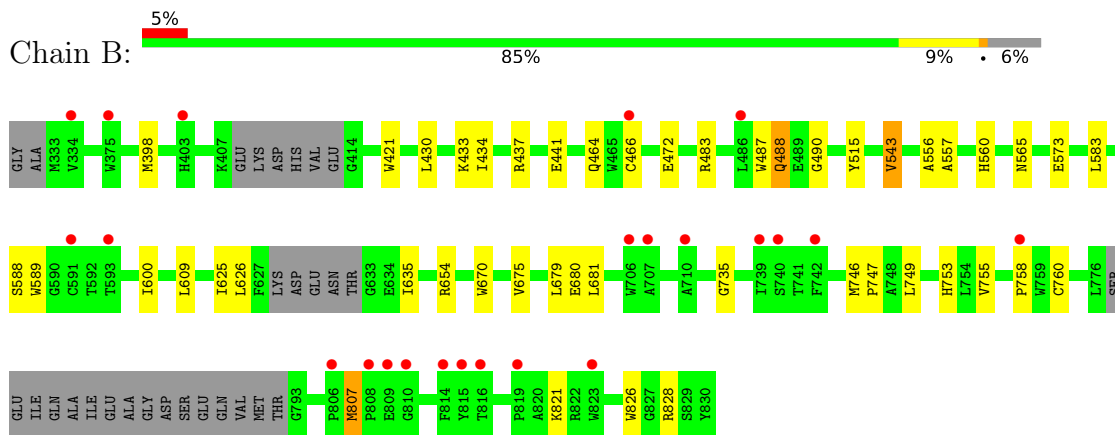
### 3 Residue-property plots [i](#)

These plots are drawn for all protein, RNA, DNA and oligosaccharide chains in the entry. The first graphic for a chain summarises the proportions of the various outlier classes displayed in the second graphic. The second graphic shows the sequence view annotated by issues in geometry and electron density. Residues are color-coded according to the number of geometric quality criteria for which they contain at least one outlier: green = 0, yellow = 1, orange = 2 and red = 3 or more. A red dot above a residue indicates a poor fit to the electron density ( $RSRZ > 2$ ). Stretches of 2 or more consecutive residues without any outlier are shown as a green connector. Residues present in the sample, but not in the model, are shown in grey.

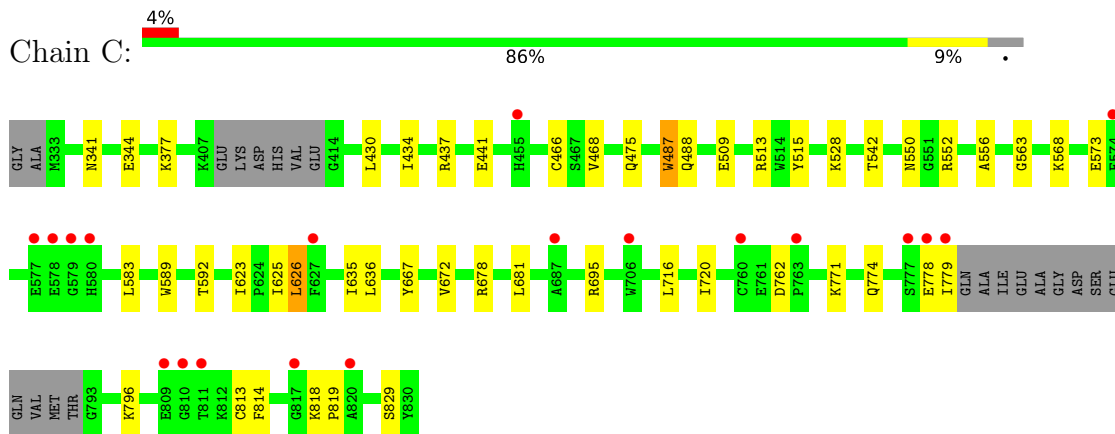
- Molecule 1: Prolyl-tRNA synthetase (ProRS)



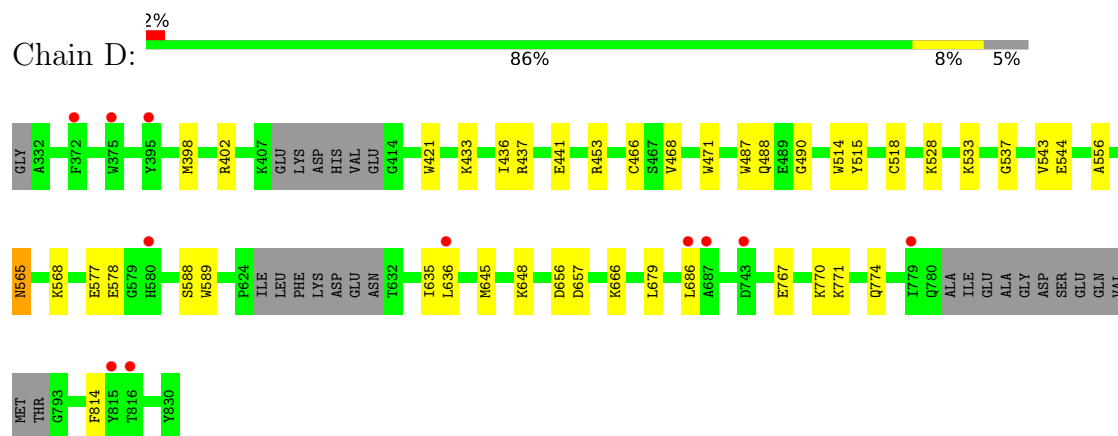
- Molecule 1: Prolyl-tRNA synthetase (ProRS)



- Molecule 1: Prolyl-tRNA synthetase (ProRS)



- Molecule 1: Prolyl-tRNA synthetase (ProRS)





## 4 Data and refinement statistics

Property	Value	Source
Space group	P 1	Depositor
Cell constants a, b, c, $\alpha$ , $\beta$ , $\gamma$	76.60Å 90.73Å 93.00Å 89.94° 99.37° 104.31°	Depositor
Resolution (Å)	40.29 – 2.17 40.26 – 2.17	Depositor EDS
% Data completeness (in resolution range)	96.6 (40.29-2.17) 96.6 (40.26-2.17)	Depositor EDS
$R_{merge}$	0.04	Depositor
$R_{sym}$	(Not available)	Depositor
$\langle I/\sigma(I) \rangle$ <sup>1</sup>	2.67 (at 2.18Å)	Xtrriage
Refinement program	REFMAC 5.7.0029	Depositor
R, $R_{free}$	0.175 , 0.224 0.177 , 0.224	Depositor DCC
$R_{free}$ test set	6101 reflections (5.02%)	wwPDB-VP
Wilson B-factor (Å <sup>2</sup> )	30.9	Xtrriage
Anisotropy	0.105	Xtrriage
Bulk solvent $k_{sol}$ (e/Å <sup>3</sup> ), $B_{sol}$ (Å <sup>2</sup> )	0.32 , 44.1	EDS
L-test for twinning <sup>2</sup>	$\langle  L  \rangle = 0.50$ , $\langle L^2 \rangle = 0.33$	Xtrriage
Estimated twinning fraction	No twinning to report.	Xtrriage
$F_o, F_c$ correlation	0.96	EDS
Total number of atoms	16481	wwPDB-VP
Average B, all atoms (Å <sup>2</sup> )	34.0	wwPDB-VP

Xtrriage's analysis on translational NCS is as follows: *The largest off-origin peak in the Patterson function is 4.94% of the height of the origin peak. No significant pseudotranslation is detected.*

<sup>1</sup>Intensities estimated from amplitudes.

<sup>2</sup>Theoretical values of  $\langle |L| \rangle$ ,  $\langle L^2 \rangle$  for acentric reflections are 0.5, 0.333 respectively for untwinned datasets, and 0.375, 0.2 for perfectly twinned datasets.

## 5 Model quality [i](#)

### 5.1 Standard geometry [i](#)

Bond lengths and bond angles in the following residue types are not validated in this section: EDO, 86X, CL, MG, ANP

The Z score for a bond length (or angle) is the number of standard deviations the observed value is removed from the expected value. A bond length (or angle) with  $|Z| > 5$  is considered an outlier worth inspection. RMSZ is the root-mean-square of all Z scores of the bond lengths (or angles).

Mol	Chain	Bond lengths		Bond angles	
		RMSZ	# Z  >5	RMSZ	# Z  >5
1	A	0.69	0/4021	0.75	0/5441
1	B	0.62	0/3913	0.70	0/5302
1	C	0.59	0/3967	0.71	0/5383
1	D	0.64	0/3954	0.72	0/5353
All	All	0.64	0/15855	0.72	0/21479

There are no bond length outliers.

There are no bond angle outliers.

There are no chirality outliers.

There are no planarity outliers.

### 5.2 Too-close contacts [i](#)

In the following table, the Non-H and H(model) columns list the number of non-hydrogen atoms and hydrogen atoms in the chain respectively. The H(added) column lists the number of hydrogen atoms added and optimized by MolProbity. The Clashes column lists the number of clashes within the asymmetric unit, whereas Symm-Clashes lists symmetry-related clashes.

Mol	Chain	Non-H	H(model)	H(added)	Clashes	Symm-Clashes
1	A	3899	0	3837	20	0
1	B	3802	0	3699	30	0
1	C	3843	0	3716	26	0
1	D	3840	0	3759	24	0
2	A	31	0	13	4	0
2	B	31	0	13	0	0
2	C	31	0	13	1	0
2	D	31	0	13	1	0
3	A	2	0	0	0	0

*Continued on next page...*

Continued from previous page...

Mol	Chain	Non-H	H(model)	H(added)	Clashes	Symm-Clashes
3	B	2	0	0	1	0
3	C	2	0	0	0	0
3	D	2	0	0	0	0
4	A	46	0	0	4	0
4	B	46	0	0	2	0
4	C	46	0	0	3	0
4	D	46	0	0	1	0
5	A	24	0	36	4	0
5	B	12	0	18	0	0
5	D	8	0	12	0	0
6	B	2	0	0	0	0
6	C	1	0	0	0	0
6	D	4	0	0	0	0
7	A	267	0	0	6	0
7	B	150	0	0	1	0
7	C	146	0	0	2	0
7	D	167	0	0	3	0
All	All	16481	0	15129	102	0

The all-atom clashscore is defined as the number of clashes found per 1000 atoms (including hydrogen atoms). The all-atom clashscore for this structure is 3.

All (102) close contacts within the same asymmetric unit are listed below, sorted by their clash magnitude.

Atom-1	Atom-2	Interatomic distance (Å)	Clash overlap (Å)
1:C:441:GLU:OE2	4:C:1004[B]:86X:N16	2.09	0.85
1:A:455[A]:HIS:HE1	7:A:1296:HOH:O	1.59	0.84
1:A:483:ARG:HH12	5:A:1010:EDO:H11	1.42	0.83
1:C:778:GLU:O	1:C:779:ILE:HG13	1.82	0.78
2:A:1001:ANP:O1A	4:A:1004[B]:86X:O21	2.02	0.77
1:B:437:ARG:NH2	1:B:466:CYS:HB2	2.03	0.74
1:A:461:LYS:HE3	7:A:1278:HOH:O	1.92	0.70
1:D:437:ARG:HG3	1:D:437:ARG:O	1.93	0.66
1:B:430:LEU:HD13	1:B:434:ILE:HD12	1.78	0.66
1:A:398:MET:HA	1:A:437:ARG:HD3	1.78	0.65
1:A:530:GLU:OE1	7:A:1101[A]:HOH:O	2.15	0.65
1:D:402:ARG:NH1	7:D:1102:HOH:O	2.29	0.65
1:B:398:MET:HE1	1:D:398:MET:HE1	1.79	0.65
1:B:437:ARG:HH21	1:B:466:CYS:HB2	1.64	0.63
1:C:716:LEU:O	1:C:720:ILE:HG12	1.99	0.63
1:D:771:LYS:O	1:D:774:GLN:HB3	1.99	0.63

Continued on next page...

*Continued from previous page...*

Atom-1	Atom-2	Interatomic distance (Å)	Clash overlap (Å)
1:C:528:LYS:HE2	1:C:542:THR:HG21	1.80	0.63
1:A:437:ARG:NH2	1:A:466:CYS:HB2	2.14	0.62
1:C:430:LEU:HD13	1:C:434:ILE:HD12	1.81	0.61
1:D:565:ASN:HB2	7:D:1203:HOH:O	1.99	0.61
1:B:398:MET:HA	1:B:437:ARG:HD3	1.82	0.61
3:B:1002:MG:MG	7:B:1122:HOH:O	1.42	0.60
1:B:398:MET:CE	1:D:398:MET:HE1	2.32	0.60
1:A:565:ASN:HB2	7:A:1276:HOH:O	2.01	0.60
1:A:455[A]:HIS:CE1	7:A:1296:HOH:O	2.44	0.59
1:C:437:ARG:HG3	1:C:468:VAL:HG12	1.84	0.59
1:C:625:ILE:HD11	1:C:667:TYR:OH	2.05	0.57
1:A:492:THR:O	1:A:586:GLN:HB2	2.05	0.56
1:B:398:MET:CE	1:D:398:MET:CE	2.84	0.56
1:B:515:TYR:CZ	1:B:556:ALA:HB1	2.40	0.55
1:D:437:ARG:NH2	1:D:466:CYS:HB2	2.22	0.55
1:C:437:ARG:NH2	1:C:466:CYS:HB2	2.22	0.55
1:C:623:ILE:HD12	1:C:678:ARG:HG3	1.89	0.54
1:B:735:GLY:HA2	1:B:753:HIS:CD2	2.44	0.53
1:C:818:LYS:HB3	1:C:819:PRO:CD	2.38	0.53
1:C:515:TYR:CZ	1:C:556:ALA:HB1	2.44	0.53
1:A:480:LEU:HD11	1:A:601:MET:CE	2.38	0.53
1:B:398:MET:HE3	1:D:398:MET:CE	2.40	0.52
1:B:670:TRP:CE3	1:B:675:VAL:HG21	2.44	0.51
1:D:453:ARG:HA	1:D:453:ARG:HE	1.75	0.51
1:C:695:ARG:HB2	1:C:720:ILE:HD11	1.92	0.51
1:D:515:TYR:CZ	1:D:556:ALA:HB1	2.46	0.51
1:C:563:GLY:HA2	7:C:1152:HOH:O	2.11	0.50
1:A:490:GLY:O	1:A:588:SER:HA	2.11	0.50
1:B:760:CYS:O	1:B:821:LYS:HD3	2.11	0.50
1:B:670:TRP:HE3	1:B:675:VAL:HG21	1.77	0.50
1:B:441:GLU:OE2	4:B:1004[B]:86X:N16	2.44	0.50
2:D:1001:ANP:O1G	7:D:1101:HOH:O	2.20	0.50
1:A:515:TYR:CZ	1:A:556:ALA:HB1	2.47	0.49
2:A:1001:ANP:O1A	4:A:1004[B]:86X:C13	2.61	0.49
1:B:746:MET:N	1:B:747:PRO:CD	2.75	0.49
1:D:490:GLY:O	1:D:588:SER:HA	2.13	0.49
1:D:645:MET:O	1:D:648:LYS:HB3	2.13	0.49
1:D:441:GLU:OE2	4:D:1004[B]:86X:N16	2.46	0.49
1:B:635:ILE:HG23	1:B:681:LEU:HD23	1.95	0.48
1:B:758:PRO:HB3	1:B:807:MET:HE1	1.95	0.48
1:C:441:GLU:OE2	4:C:1004[A]:86X:N16	2.47	0.47

*Continued on next page...*

*Continued from previous page...*

Atom-1	Atom-2	Interatomic distance (Å)	Clash overlap (Å)
1:B:490:GLY:O	1:B:588:SER:HA	2.14	0.47
1:C:573:GLU:HG2	1:C:583:LEU:HD23	1.97	0.47
1:D:398:MET:HE2	1:D:436:ILE:HG23	1.96	0.47
1:D:528:LYS:NZ	1:D:544:GLU:OE2	2.41	0.47
1:C:377:LYS:NZ	7:C:1105:HOH:O	2.48	0.47
1:B:421:TRP:CE3	1:B:433:LYS:HG3	2.50	0.47
1:C:626:LEU:HD21	1:C:636:LEU:HD11	1.96	0.47
1:A:376:GLU:HB3	5:A:1007:EDO:H22	1.96	0.46
1:D:635:ILE:HG22	1:D:686:LEU:HD13	1.97	0.46
1:A:485:PHE:CG	2:A:1001:ANP:C2	2.99	0.46
1:A:645:MET:HE3	7:A:1204:HOH:O	2.15	0.46
1:D:514:TRP:O	1:D:518:CYS:HB2	2.16	0.46
1:A:453:ARG:HD3	1:A:453:ARG:HA	1.62	0.46
1:B:543:VAL:HG21	1:B:557:ALA:HB3	1.98	0.45
1:B:472:GLU:H	1:B:483:ARG:HG2	1.81	0.45
1:D:636:LEU:HD21	1:D:657:ASP:HB2	1.98	0.45
2:A:1001:ANP:PA	4:A:1004[B]:86X:O21	2.75	0.45
1:C:509:GLU:O	1:C:513:ARG:HG3	2.17	0.45
1:B:679:LEU:HD23	1:B:679:LEU:C	2.37	0.44
2:C:1001:ANP:O1A	4:C:1004[B]:86X:O21	2.36	0.44
1:A:415:PHE:HB3	4:A:1004[A]:86X:C02	2.47	0.43
1:D:767:GLU:HA	1:D:770:LYS:HE3	1.99	0.43
1:A:518:CYS:SG	5:A:1009:EDO:H22	2.58	0.43
1:B:600:ILE:HG23	1:B:609:LEU:CD2	2.49	0.43
1:B:573:GLU:HG2	1:B:583:LEU:HD23	2.01	0.43
1:B:543:VAL:CG2	1:B:557:ALA:HB3	2.49	0.42
1:B:755:VAL:CG2	1:B:826:TRP:HB2	2.49	0.42
1:C:568:LYS:HD3	1:C:583:LEU:HD11	2.01	0.42
1:C:550:ASN:OD1	1:C:552:ARG:HG3	2.19	0.42
1:C:635:ILE:HG23	1:C:681:LEU:HD22	2.00	0.42
1:D:533:LYS:HE3	1:D:537:GLY:O	2.19	0.42
1:B:464:GLN:O	1:B:488:GLN:HA	2.19	0.42
1:C:796:LYS:HE2	1:C:829:SER:OG	2.20	0.42
1:C:487:TRP:HB3	1:C:592:THR:HG22	2.01	0.42
1:A:440:SER:HB2	1:A:489:GLU:OE1	2.20	0.41
1:D:421:TRP:CE3	1:D:433:LYS:HG3	2.56	0.41
1:D:679:LEU:C	1:D:679:LEU:HD23	2.41	0.41
1:B:625:ILE:HD11	1:B:680:GLU:HB3	2.01	0.41
1:C:341:ASN:ND2	1:C:344:GLU:CD	2.74	0.41
1:D:656:ASP:OD2	1:D:666:LYS:HG2	2.21	0.41
1:A:377:LYS:HE2	5:A:1007:EDO:H21	2.02	0.41

*Continued on next page...*

Continued from previous page...

Atom-1	Atom-2	Interatomic distance (Å)	Clash overlap (Å)
1:C:771:LYS:O	1:C:774:GLN:HB3	2.21	0.41
1:B:749:LEU:HB3	1:B:828:ARG:NH1	2.36	0.40
1:B:560:HIS:HE2	4:B:1004[A]:86X:C20	2.35	0.40

There are no symmetry-related clashes.

## 5.3 Torsion angles [i](#)

### 5.3.1 Protein backbone [i](#)

In the following table, the Percentiles column shows the percent Ramachandran outliers of the chain as a percentile score with respect to all X-ray entries followed by that with respect to entries of similar resolution.

The Analysed column shows the number of residues for which the backbone conformation was analysed, and the total number of residues.

Mol	Chain	Analysed	Favoured	Allowed	Outliers	Percentiles	
1	A	473/500 (95%)	466 (98%)	7 (2%)	0	100	100
1	B	465/500 (93%)	455 (98%)	10 (2%)	0	100	100
1	C	479/500 (96%)	459 (96%)	20 (4%)	0	100	100
1	D	469/500 (94%)	454 (97%)	15 (3%)	0	100	100
All	All	1886/2000 (94%)	1834 (97%)	52 (3%)	0	100	100

There are no Ramachandran outliers to report.

### 5.3.2 Protein sidechains [i](#)

In the following table, the Percentiles column shows the percent sidechain outliers of the chain as a percentile score with respect to all X-ray entries followed by that with respect to entries of similar resolution.

The Analysed column shows the number of residues for which the sidechain conformation was analysed, and the total number of residues.

Mol	Chain	Analysed	Rotameric	Outliers	Percentiles	
1	A	414/436 (95%)	404 (98%)	10 (2%)	49	59
1	B	395/436 (91%)	387 (98%)	8 (2%)	55	66

Continued on next page...

*Continued from previous page...*

Mol	Chain	Analysed	Rotameric	Outliers	Percentiles	
1	C	398/436 (91%)	390 (98%)	8 (2%)	55	66
1	D	402/436 (92%)	391 (97%)	11 (3%)	44	54
All	All	1609/1744 (92%)	1572 (98%)	37 (2%)	50	60

All (37) residues with a non-rotameric sidechain are listed below:

Mol	Chain	Res	Type
1	A	402	ARG
1	A	468	VAL
1	A	471	TRP
1	A	487	TRP
1	A	488	GLN
1	A	543	VAL
1	A	589	TRP
1	A	762	ASP
1	A	792	THR
1	A	814	PHE
1	B	487	TRP
1	B	488	GLN
1	B	543	VAL
1	B	565	ASN
1	B	589	TRP
1	B	626	LEU
1	B	654	ARG
1	B	807	MET
1	C	475	GLN
1	C	487	TRP
1	C	488	GLN
1	C	589	TRP
1	C	626	LEU
1	C	762	ASP
1	C	813	CYS
1	C	814	PHE
1	D	468	VAL
1	D	471	TRP
1	D	487	TRP
1	D	488	GLN
1	D	543	VAL
1	D	565	ASN
1	D	568	LYS
1	D	577	GLU

*Continued on next page...*

Continued from previous page...

Mol	Chain	Res	Type
1	D	578	GLU
1	D	589	TRP
1	D	814	PHE

Sometimes sidechains can be flipped to improve hydrogen bonding and reduce clashes. There are no such sidechains identified.

### 5.3.3 RNA [i](#)

There are no RNA molecules in this entry.

### 5.4 Non-standard residues in protein, DNA, RNA chains [i](#)

There are no non-standard protein/DNA/RNA residues in this entry.

### 5.5 Carbohydrates [i](#)

There are no monosaccharides in this entry.

### 5.6 Ligand geometry [i](#)

Of 38 ligands modelled in this entry, 15 are monoatomic - leaving 23 for Mogul analysis.

In the following table, the Counts columns list the number of bonds (or angles) for which Mogul statistics could be retrieved, the number of bonds (or angles) that are observed in the model and the number of bonds (or angles) that are defined in the Chemical Component Dictionary. The Link column lists molecule types, if any, to which the group is linked. The Z score for a bond length (or angle) is the number of standard deviations the observed value is removed from the expected value. A bond length (or angle) with  $|Z| > 2$  is considered an outlier worth inspection. RMSZ is the root-mean-square of all Z scores of the bond lengths (or angles).

Mol	Type	Chain	Res	Link	Bond lengths			Bond angles		
					Counts	RMSZ	# Z  > 2	Counts	RMSZ	# Z  > 2
4	86X	A	1004[B]	-	25,25,25	1.35	2 (8%)	29,35,35	2.44	4 (13%)
5	EDO	D	1006	-	3,3,3	0.61	0	2,2,2	0.24	0
5	EDO	B	1005	-	3,3,3	0.61	0	2,2,2	0.16	0
5	EDO	A	1009	-	3,3,3	0.45	0	2,2,2	0.47	0
5	EDO	B	1006	-	3,3,3	0.55	0	2,2,2	0.34	0
2	ANP	A	1001	3	29,33,33	1.89	5 (17%)	31,52,52	1.04	1 (3%)
4	86X	D	1004[B]	-	25,25,25	1.29	2 (8%)	29,35,35	2.44	4 (13%)



Mol	Type	Chain	Res	Link	Bond lengths			Bond angles		
					Counts	RMSZ	# Z  > 2	Counts	RMSZ	# Z  > 2
5	EDO	A	1008	-	3,3,3	0.71	0	2,2,2	0.31	0
2	ANP	D	1001	3	29,33,33	1.71	3 (10%)	31,52,52	0.98	1 (3%)
2	ANP	B	1001	3	29,33,33	1.71	6 (20%)	31,52,52	1.32	5 (16%)
5	EDO	A	1010	-	3,3,3	0.43	0	2,2,2	0.79	0
5	EDO	A	1007	-	3,3,3	0.45	0	2,2,2	0.47	0
5	EDO	A	1005	-	3,3,3	0.36	0	2,2,2	0.71	0
4	86X	C	1004[A]	-	25,25,25	1.32	2 (8%)	29,35,35	2.43	4 (13%)
4	86X	B	1004[A]	-	25,25,25	1.29	2 (8%)	29,35,35	2.43	4 (13%)
4	86X	A	1004[A]	-	25,25,25	1.33	2 (8%)	29,35,35	2.42	4 (13%)
5	EDO	D	1005	-	3,3,3	0.50	0	2,2,2	0.28	0
5	EDO	A	1006	-	3,3,3	0.50	0	2,2,2	0.72	0
4	86X	D	1004[A]	-	25,25,25	1.29	2 (8%)	29,35,35	2.43	4 (13%)
2	ANP	C	1001	3	29,33,33	1.92	5 (17%)	31,52,52	0.99	1 (3%)
4	86X	C	1004[B]	-	25,25,25	1.35	2 (8%)	29,35,35	2.44	4 (13%)
5	EDO	B	1007	-	3,3,3	0.46	0	2,2,2	0.43	0
4	86X	B	1004[B]	-	25,25,25	1.28	2 (8%)	29,35,35	2.44	4 (13%)

In the following table, the Chirals column lists the number of chiral outliers, the number of chiral centers analysed, the number of these observed in the model and the number defined in the Chemical Component Dictionary. Similar counts are reported in the Torsion and Rings columns. '-' means no outliers of that kind were identified.

Mol	Type	Chain	Res	Link	Chirals	Torsions	Rings
4	86X	A	1004[B]	-	-	4/6/17/17	0/3/3/3
5	EDO	D	1006	-	-	1/1/1/1	-
5	EDO	B	1005	-	-	1/1/1/1	-
5	EDO	A	1009	-	-	0/1/1/1	-
5	EDO	B	1006	-	-	1/1/1/1	-
2	ANP	A	1001	3	-	5/14/38/38	0/3/3/3
4	86X	D	1004[B]	-	-	4/6/17/17	0/3/3/3
5	EDO	A	1008	-	-	1/1/1/1	-
2	ANP	D	1001	3	-	4/14/38/38	0/3/3/3
2	ANP	B	1001	3	-	5/14/38/38	0/3/3/3
5	EDO	A	1010	-	-	1/1/1/1	-
5	EDO	A	1007	-	-	1/1/1/1	-
5	EDO	A	1005	-	-	1/1/1/1	-
4	86X	C	1004[A]	-	-	0/6/17/17	0/3/3/3
4	86X	B	1004[A]	-	-	2/6/17/17	0/3/3/3
4	86X	A	1004[A]	-	-	2/6/17/17	0/3/3/3

Continued on next page...

*Continued from previous page...*

Mol	Type	Chain	Res	Link	Chirals	Torsions	Rings
5	EDO	D	1005	-	-	1/1/1/1	-
5	EDO	A	1006	-	-	0/1/1/1	-
4	86X	D	1004[A]	-	-	0/6/17/17	0/3/3/3
2	ANP	C	1001	3	-	4/14/38/38	0/3/3/3
4	86X	C	1004[B]	-	-	0/6/17/17	0/3/3/3
5	EDO	B	1007	-	-	1/1/1/1	-
4	86X	B	1004[B]	-	-	0/6/17/17	0/3/3/3

All (35) bond length outliers are listed below:

Mol	Chain	Res	Type	Atoms	Z	Observed(Å)	Ideal(Å)
2	A	1001	ANP	PG-O1G	6.44	1.56	1.46
2	C	1001	ANP	PG-O1G	6.44	1.56	1.46
2	D	1001	ANP	PG-O1G	6.43	1.56	1.46
2	B	1001	ANP	PG-O3G	-5.04	1.43	1.56
4	A	1004[A]	86X	C06-C22	-4.60	1.38	1.47
4	C	1004[B]	86X	C06-C22	-4.59	1.38	1.47
4	B	1004[A]	86X	C06-C22	-4.58	1.38	1.47
4	D	1004[B]	86X	C06-C22	-4.58	1.38	1.47
4	A	1004[B]	86X	C06-C22	-4.57	1.38	1.47
4	C	1004[A]	86X	C06-C22	-4.56	1.38	1.47
4	B	1004[B]	86X	C06-C22	-4.56	1.38	1.47
4	D	1004[A]	86X	C06-C22	-4.56	1.38	1.47
2	B	1001	ANP	PG-O1G	4.44	1.53	1.46
2	C	1001	ANP	PG-O3G	-3.86	1.46	1.56
2	D	1001	ANP	PG-O3G	-3.86	1.46	1.56
2	A	1001	ANP	PG-O3G	-3.85	1.46	1.56
2	A	1001	ANP	PG-N3B	3.77	1.73	1.63
2	C	1001	ANP	O4'-C1'	3.76	1.46	1.41
2	A	1001	ANP	PB-N3B	3.75	1.73	1.63
2	D	1001	ANP	O4'-C1'	3.75	1.46	1.41
4	C	1004[B]	86X	C10-N11	3.38	1.41	1.36
4	B	1004[A]	86X	C10-N11	3.36	1.41	1.36
4	D	1004[B]	86X	C10-N11	3.35	1.41	1.36
4	D	1004[A]	86X	C10-N11	3.34	1.41	1.36
4	A	1004[B]	86X	C10-N11	3.34	1.41	1.36
4	C	1004[A]	86X	C10-N11	3.33	1.41	1.36
4	A	1004[A]	86X	C10-N11	3.29	1.41	1.36
4	B	1004[B]	86X	C10-N11	3.29	1.41	1.36
2	C	1001	ANP	PG-N3B	3.28	1.71	1.63
2	C	1001	ANP	PB-N3B	3.23	1.71	1.63
2	A	1001	ANP	O4'-C1'	2.80	1.45	1.41

*Continued on next page...*

*Continued from previous page...*

Mol	Chain	Res	Type	Atoms	Z	Observed(Å)	Ideal(Å)
2	B	1001	ANP	O4'-C1'	2.65	1.44	1.41
2	B	1001	ANP	PA-O2A	-2.61	1.43	1.55
2	B	1001	ANP	PA-O1A	-2.51	1.42	1.50
2	B	1001	ANP	PB-O1B	-2.04	1.42	1.46

All (40) bond angle outliers are listed below:

Mol	Chain	Res	Type	Atoms	Z	Observed(°)	Ideal(°)
4	A	1004[B]	86X	C06-C22-N11	9.26	119.20	113.80
4	B	1004[B]	86X	C06-C22-N11	9.24	119.19	113.80
4	D	1004[B]	86X	C06-C22-N11	9.24	119.19	113.80
4	D	1004[A]	86X	C06-C22-N11	9.21	119.17	113.80
4	C	1004[A]	86X	C06-C22-N11	9.19	119.16	113.80
4	B	1004[A]	86X	C06-C22-N11	9.17	119.15	113.80
4	A	1004[A]	86X	C06-C22-N11	9.16	119.14	113.80
4	C	1004[B]	86X	C06-C22-N11	9.15	119.14	113.80
4	C	1004[B]	86X	N11-C10-N09	-6.68	120.53	126.34
4	B	1004[A]	86X	N11-C10-N09	-6.65	120.56	126.34
4	A	1004[A]	86X	N11-C10-N09	-6.64	120.56	126.34
4	C	1004[A]	86X	N11-C10-N09	-6.64	120.57	126.34
4	A	1004[B]	86X	N11-C10-N09	-6.63	120.57	126.34
4	B	1004[B]	86X	N11-C10-N09	-6.63	120.58	126.34
4	D	1004[A]	86X	N11-C10-N09	-6.62	120.58	126.34
4	D	1004[B]	86X	N11-C10-N09	-6.59	120.61	126.34
4	C	1004[A]	86X	C07-N09-C10	4.19	120.75	116.62
4	C	1004[B]	86X	C07-N09-C10	4.19	120.75	116.62
4	B	1004[A]	86X	C07-N09-C10	4.18	120.74	116.62
4	A	1004[A]	86X	C07-N09-C10	4.16	120.72	116.62
4	D	1004[B]	86X	C07-N09-C10	4.15	120.71	116.62
4	B	1004[B]	86X	C07-N09-C10	4.15	120.71	116.62
4	A	1004[B]	86X	C07-N09-C10	4.11	120.67	116.62
4	D	1004[A]	86X	C07-N09-C10	4.10	120.66	116.62
2	A	1001	ANP	O2G-PG-O1G	-3.14	105.57	113.45
2	C	1001	ANP	O2G-PG-O1G	-3.14	105.57	113.45
2	D	1001	ANP	O2G-PG-O1G	-3.13	105.59	113.45
2	B	1001	ANP	O2G-PG-O1G	-2.84	106.31	113.45
4	D	1004[B]	86X	C10-N11-C22	-2.57	119.89	121.90
4	B	1004[A]	86X	C10-N11-C22	-2.53	119.93	121.90
4	C	1004[A]	86X	C10-N11-C22	-2.51	119.94	121.90
4	B	1004[B]	86X	C10-N11-C22	-2.50	119.95	121.90
4	C	1004[B]	86X	C10-N11-C22	-2.50	119.95	121.90
4	D	1004[A]	86X	C10-N11-C22	-2.50	119.95	121.90

*Continued on next page...*

*Continued from previous page...*

Mol	Chain	Res	Type	Atoms	Z	Observed(°)	Ideal(°)
4	A	1004[B]	86X	C10-N11-C22	-2.50	119.96	121.90
4	A	1004[A]	86X	C10-N11-C22	-2.48	119.97	121.90
2	B	1001	ANP	C5-C6-N6	2.33	123.89	120.35
2	B	1001	ANP	C5-C6-N1	-2.32	115.09	120.35
2	B	1001	ANP	O4'-C1'-C2'	-2.14	103.81	106.93
2	B	1001	ANP	O1G-PG-N3B	-2.11	108.67	111.77

There are no chirality outliers.

All (39) torsion outliers are listed below:

Mol	Chain	Res	Type	Atoms
2	A	1001	ANP	PB-N3B-PG-O1G
2	A	1001	ANP	PA-O3A-PB-O2B
2	A	1001	ANP	C5'-O5'-PA-O1A
2	A	1001	ANP	C5'-O5'-PA-O2A
2	B	1001	ANP	PB-N3B-PG-O1G
2	B	1001	ANP	C5'-O5'-PA-O1A
2	B	1001	ANP	C5'-O5'-PA-O2A
2	C	1001	ANP	PB-N3B-PG-O1G
2	C	1001	ANP	C5'-O5'-PA-O1A
2	C	1001	ANP	C5'-O5'-PA-O2A
2	D	1001	ANP	PB-N3B-PG-O1G
2	D	1001	ANP	C5'-O5'-PA-O2A
4	A	1004[A]	86X	C13-C14-C15-C20
4	A	1004[B]	86X	C13-C14-C15-N16
4	D	1004[B]	86X	C13-C14-C15-N16
4	B	1004[A]	86X	N11-C12-C13-C14
4	A	1004[A]	86X	N11-C12-C13-C14
5	A	1005	EDO	O1-C1-C2-O2
5	B	1005	EDO	O1-C1-C2-O2
5	B	1007	EDO	O1-C1-C2-O2
5	D	1006	EDO	O1-C1-C2-O2
5	A	1007	EDO	O1-C1-C2-O2
5	A	1010	EDO	O1-C1-C2-O2
2	B	1001	ANP	C5'-O5'-PA-O3A
2	D	1001	ANP	C5'-O5'-PA-O3A
4	A	1004[B]	86X	C13-C12-N11-C22
4	D	1004[B]	86X	C13-C12-N11-C22
2	D	1001	ANP	C5'-O5'-PA-O1A
4	D	1004[B]	86X	C12-C13-C14-C15
5	A	1008	EDO	O1-C1-C2-O2
5	B	1006	EDO	O1-C1-C2-O2

*Continued on next page...*

*Continued from previous page...*

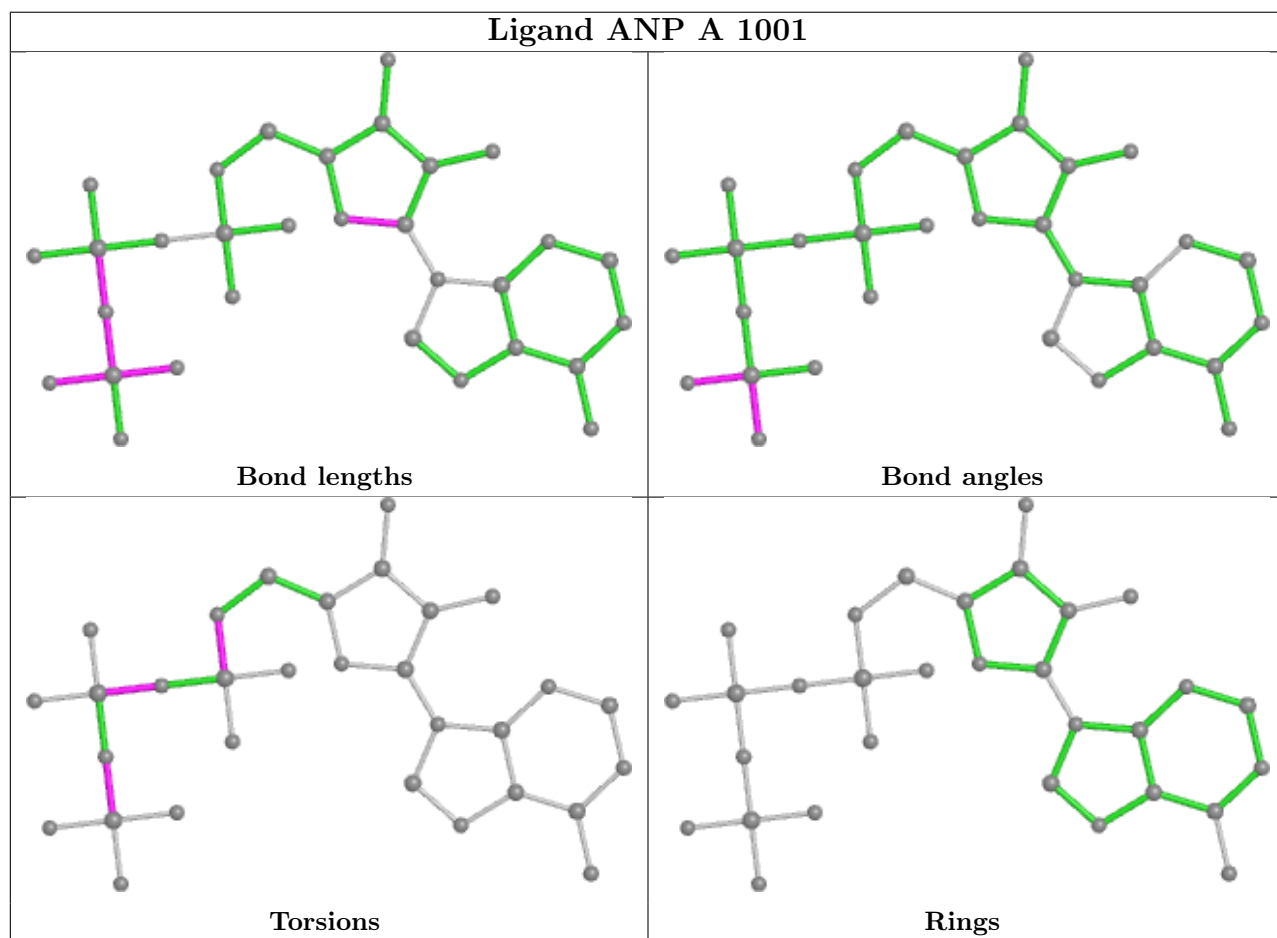
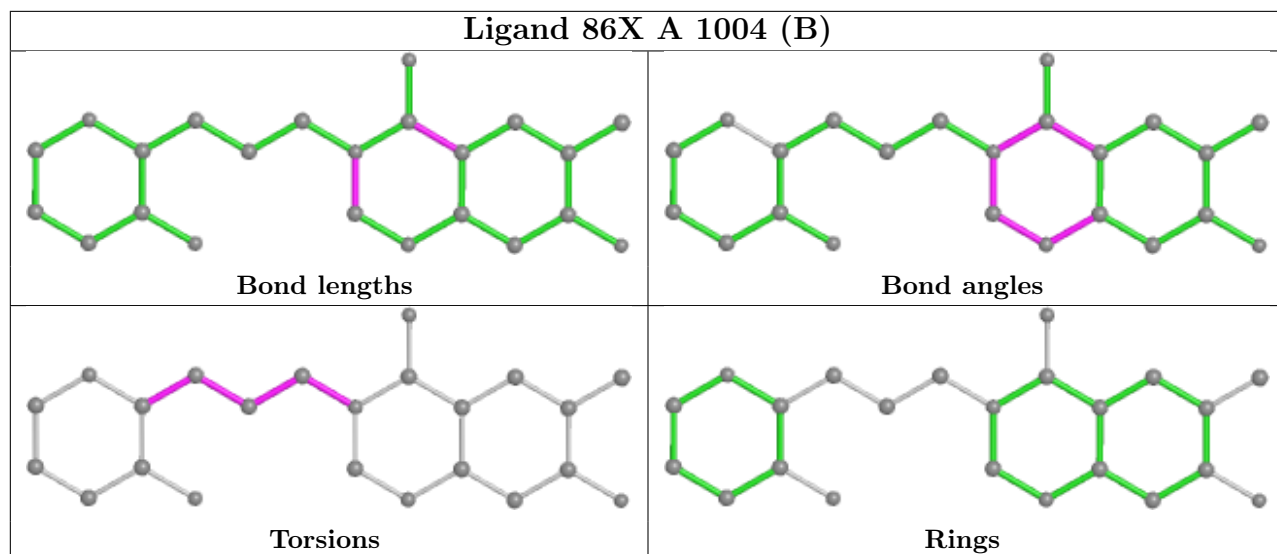
Mol	Chain	Res	Type	Atoms
4	A	1004[B]	86X	N11-C12-C13-C14
2	B	1001	ANP	O4'-C4'-C5'-O5'
4	D	1004[B]	86X	C13-C12-N11-C10
2	A	1001	ANP	C5'-O5'-PA-O3A
2	C	1001	ANP	C5'-O5'-PA-O3A
4	B	1004[A]	86X	C13-C14-C15-N16
4	A	1004[B]	86X	C12-C13-C14-C15
5	D	1005	EDO	O1-C1-C2-O2

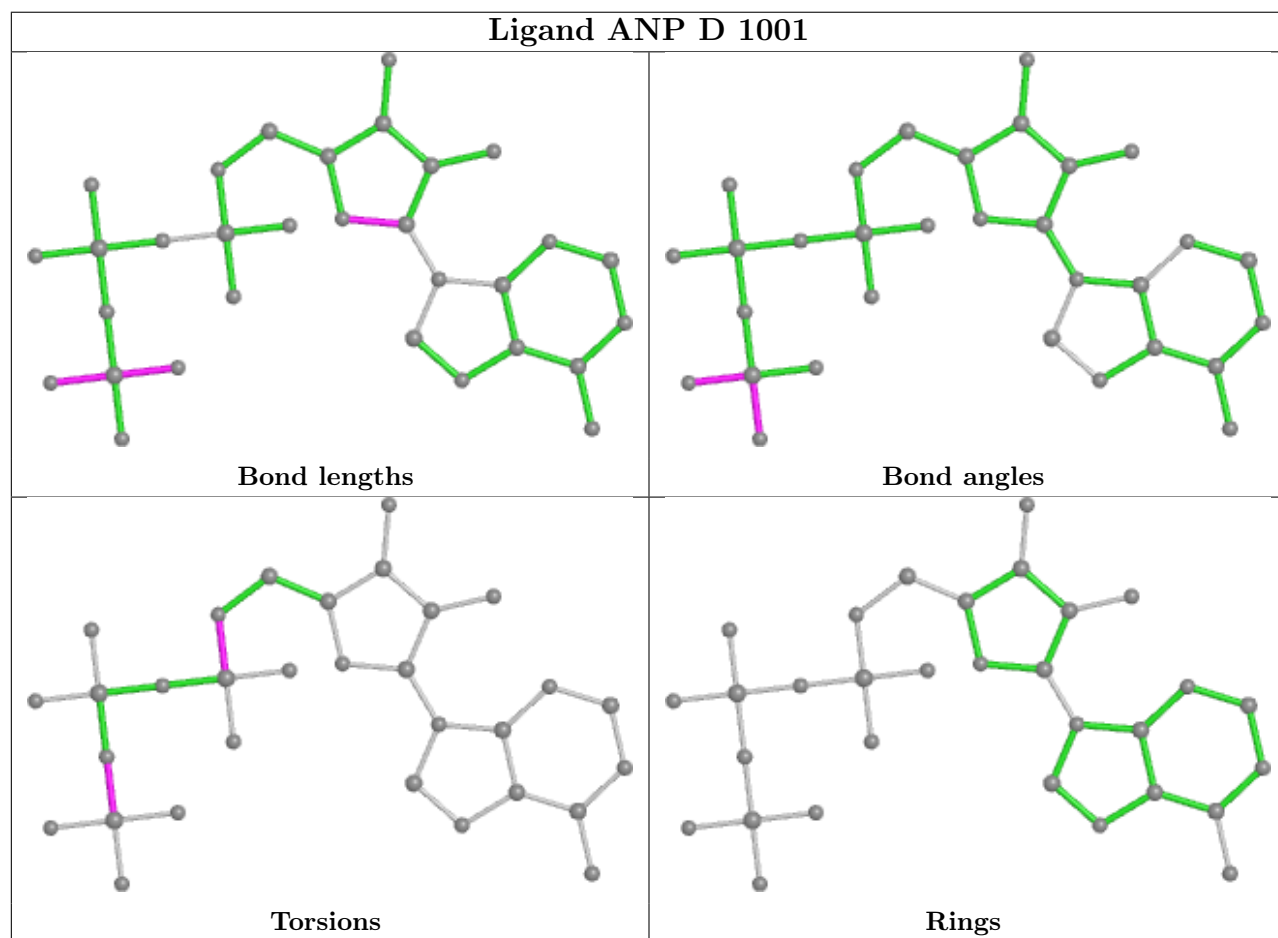
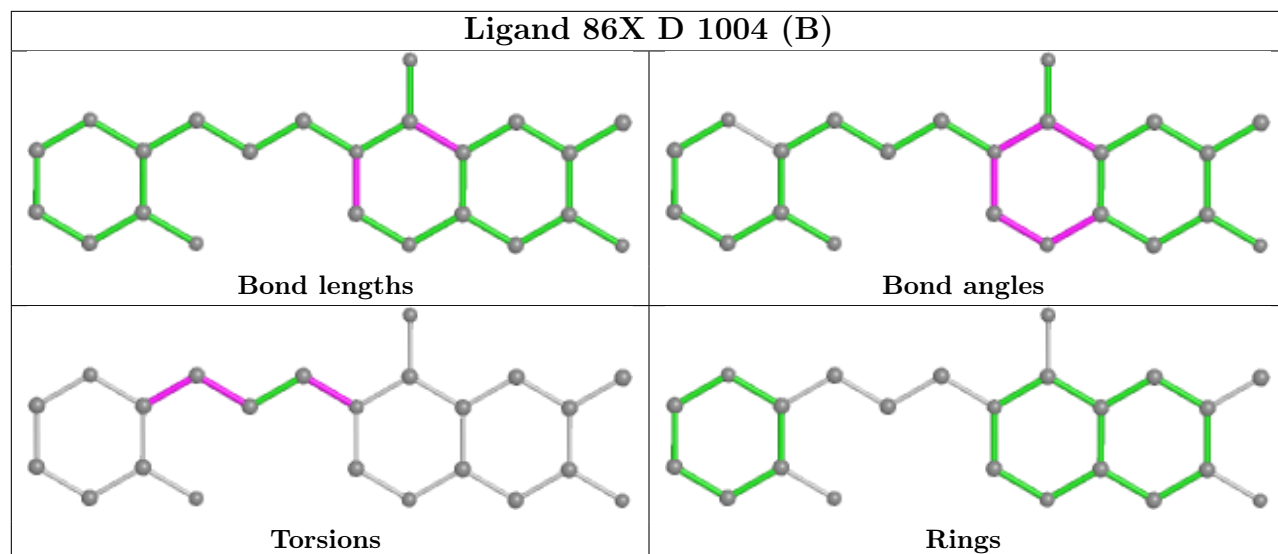
There are no ring outliers.

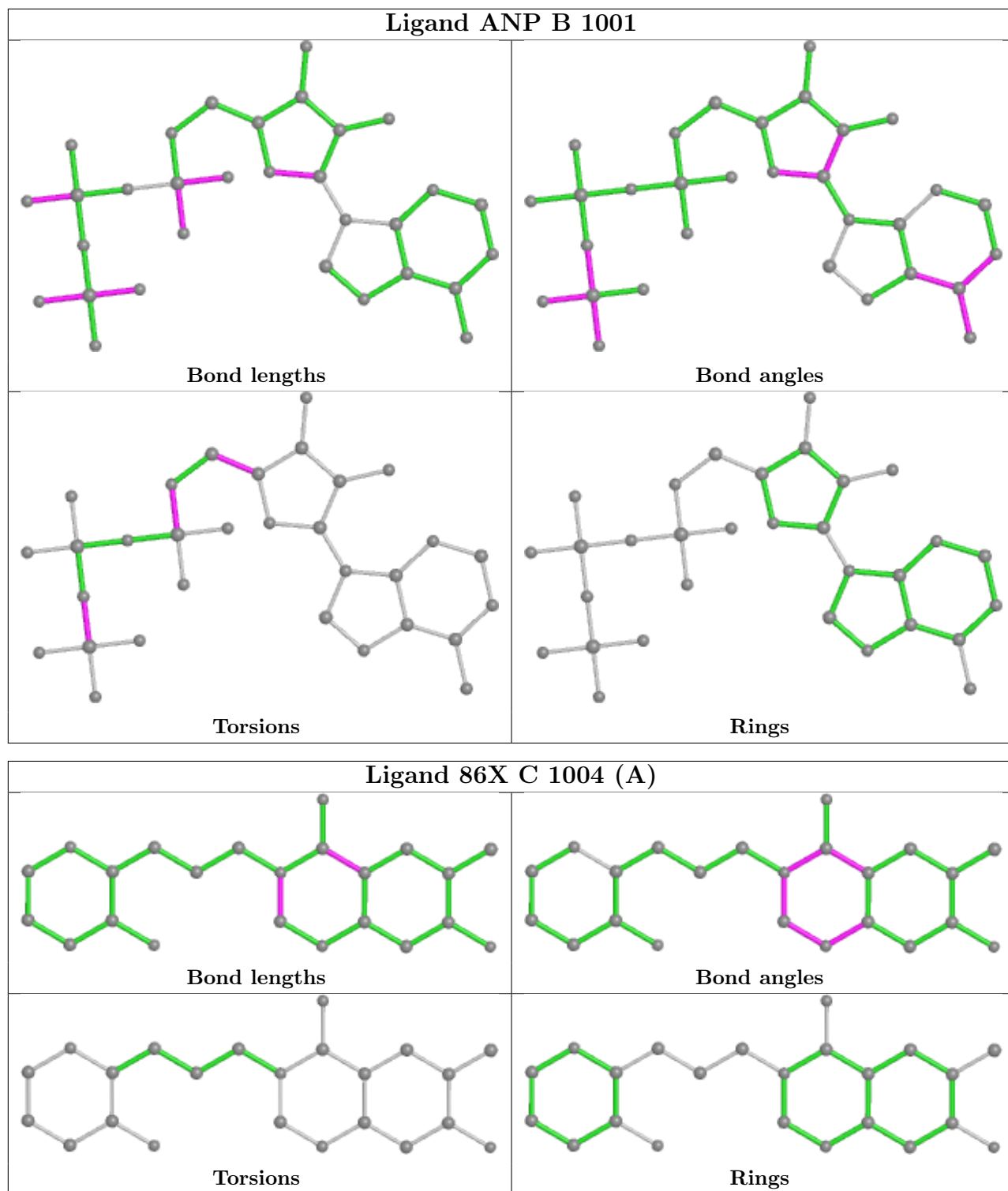
13 monomers are involved in 16 short contacts:

Mol	Chain	Res	Type	Clashes	Symm-Clashes
4	A	1004[B]	86X	3	0
5	A	1009	EDO	1	0
2	A	1001	ANP	4	0
4	D	1004[B]	86X	1	0
2	D	1001	ANP	1	0
5	A	1010	EDO	1	0
5	A	1007	EDO	2	0
4	C	1004[A]	86X	1	0
4	B	1004[A]	86X	1	0
4	A	1004[A]	86X	1	0
2	C	1001	ANP	1	0
4	C	1004[B]	86X	2	0
4	B	1004[B]	86X	1	0

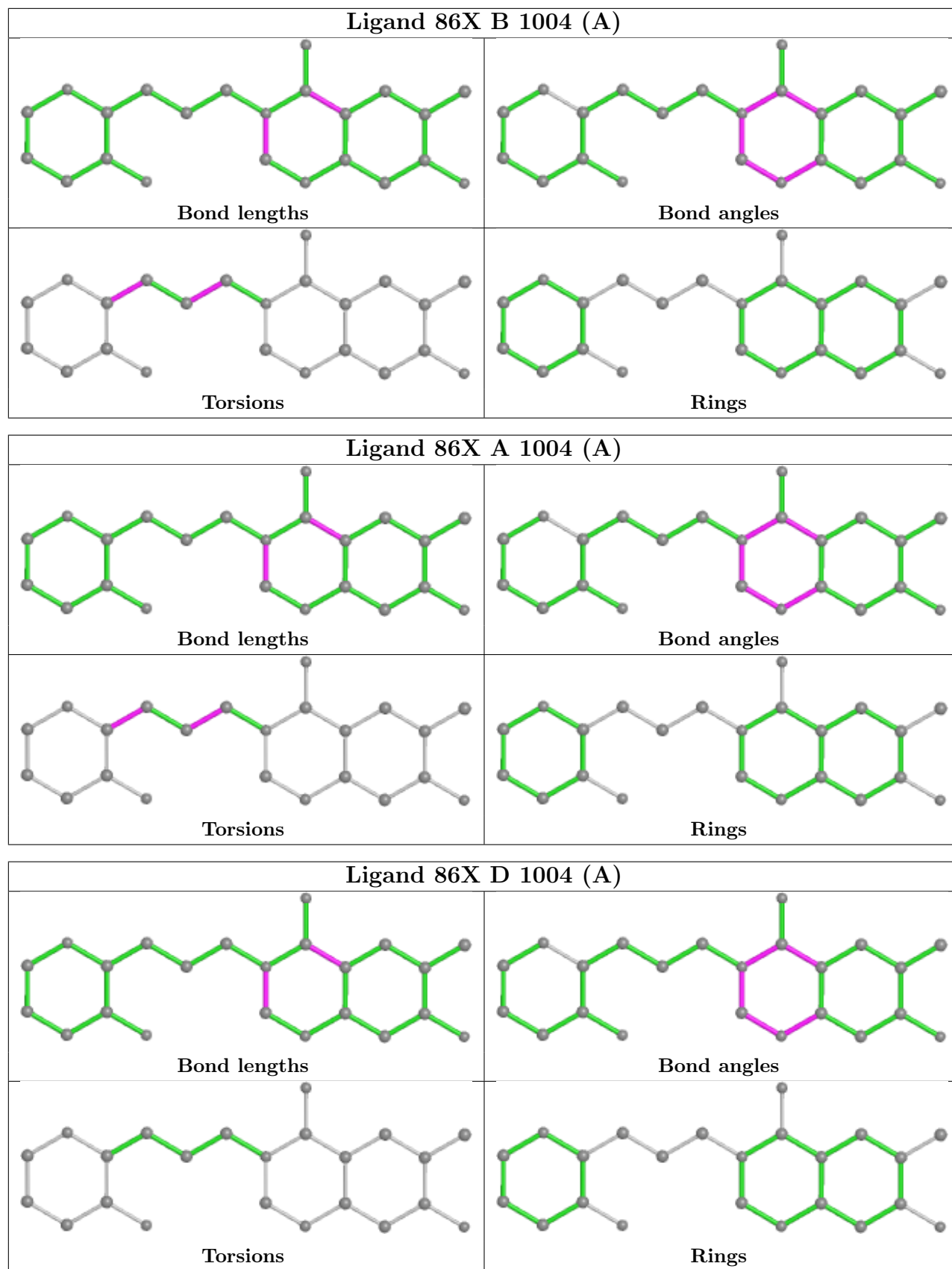
The following is a two-dimensional graphical depiction of Mogul quality analysis of bond lengths, bond angles, torsion angles, and ring geometry for all instances of the Ligand of Interest. In addition, ligands with molecular weight > 250 and outliers as shown on the validation Tables will also be included. For torsion angles, if less than 5% of the Mogul distribution of torsion angles is within 10 degrees of the torsion angle in question, then that torsion angle is considered an outlier. Any bond that is central to one or more torsion angles identified as an outlier by Mogul will be highlighted in the graph. For rings, the root-mean-square deviation (RMSD) between the ring in question and similar rings identified by Mogul is calculated over all ring torsion angles. If the average RMSD is greater than 60 degrees and the minimal RMSD between the ring in question and any Mogul-identified rings is also greater than 60 degrees, then that ring is considered an outlier. The outliers are highlighted in purple. The color gray indicates Mogul did not find sufficient equivalents in the CSD to analyse the geometry.

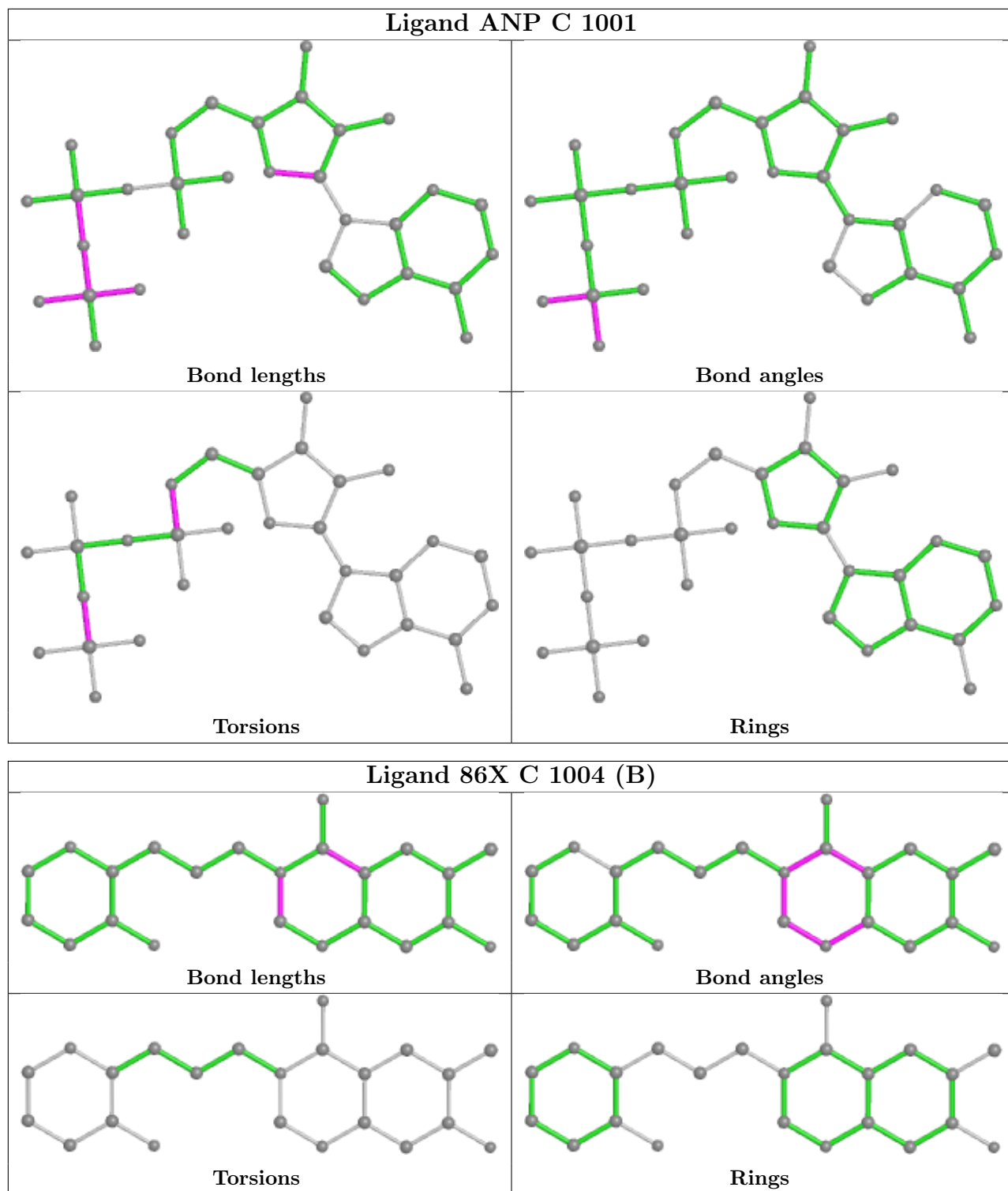


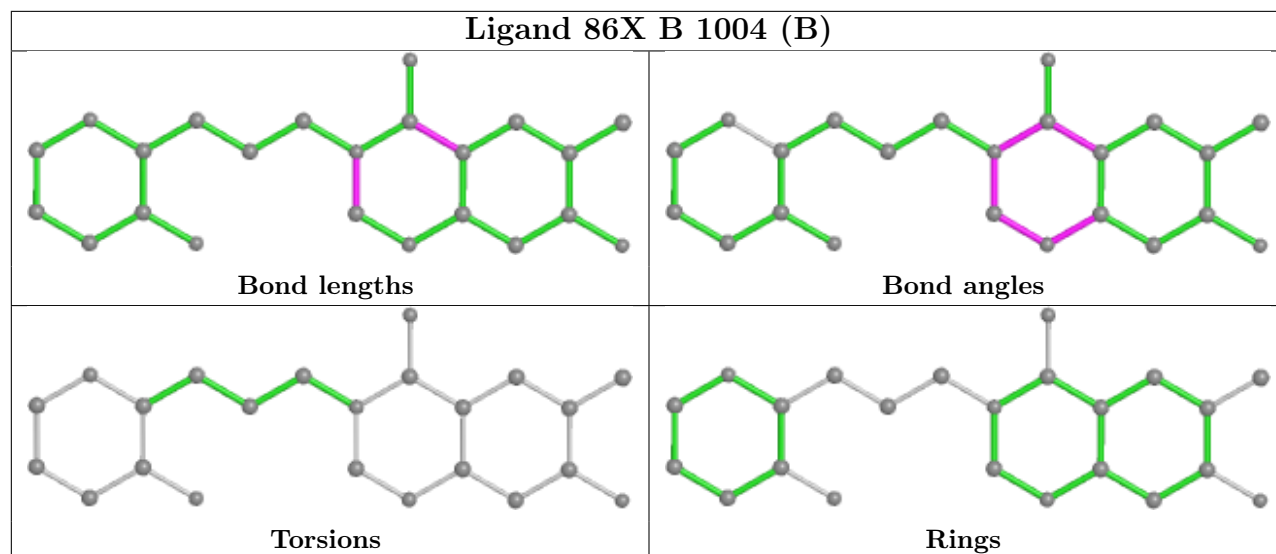












## 5.7 Other polymers [i](#)

There are no such residues in this entry.

## 5.8 Polymer linkage issues [i](#)

There are no chain breaks in this entry.

## 6 Fit of model and data

### 6.1 Protein, DNA and RNA chains

In the following table, the column labelled ‘#RSRZ > 2’ contains the number (and percentage) of RSRZ outliers, followed by percent RSRZ outliers for the chain as percentile scores relative to all X-ray entries and entries of similar resolution. The OWAB column contains the minimum, median, 95<sup>th</sup> percentile and maximum values of the occupancy-weighted average B-factor per residue. The column labelled ‘Q < 0.9’ lists the number of (and percentage) of residues with an average occupancy less than 0.9.

Mol	Chain	Analysed	<RSRZ>	#RSRZ>2	OWAB(Å <sup>2</sup> )	Q<0.9
1	A	476/500 (95%)	-0.23	2 (0%) 92 92	13, 25, 50, 80	1 (0%)
1	B	471/500 (94%)	0.14	23 (4%) 29 31	17, 33, 65, 80	0
1	C	479/500 (95%)	0.09	19 (3%) 38 39	18, 35, 70, 94	0
1	D	474/500 (94%)	0.08	11 (2%) 60 61	15, 31, 63, 83	1 (0%)
All	All	1900/2000 (95%)	0.02	55 (2%) 51 52	13, 31, 65, 94	2 (0%)

All (55) RSRZ outliers are listed below:

Mol	Chain	Res	Type	RSRZ
1	C	810	GLY	4.9
1	B	806	PRO	4.1
1	C	627	PHE	4.1
1	B	742	PHE	4.0
1	B	814	PHE	3.8
1	D	687	ALA	3.6
1	D	779	ILE	3.4
1	C	687	ALA	3.3
1	D	375	TRP	3.1
1	A	742	PHE	3.1
1	B	816	THR	3.1
1	B	808	PRO	3.0
1	D	686	LEU	3.0
1	B	739	ILE	2.8
1	D	395	TYR	2.7
1	C	779	ILE	2.7
1	B	810	GLY	2.7
1	D	815	TYR	2.6
1	C	577	GLU	2.6
1	B	823	TRP	2.5
1	C	763	PRO	2.5

*Continued on next page...*

*Continued from previous page...*

Mol	Chain	Res	Type	RSRZ
1	B	403	HIS	2.5
1	B	809	GLU	2.4
1	D	580	HIS	2.4
1	B	466	CYS	2.4
1	B	815	TYR	2.4
1	B	486	LEU	2.4
1	B	710	ALA	2.4
1	B	591	CYS	2.3
1	C	820	ALA	2.3
1	C	455	HIS	2.3
1	B	375	TRP	2.3
1	B	593	THR	2.3
1	C	809	GLU	2.3
1	B	740	SER	2.3
1	B	819	PRO	2.2
1	C	579	GLY	2.2
1	C	778	GLU	2.2
1	B	758	PRO	2.2
1	C	706	TRP	2.1
1	C	580	HIS	2.1
1	D	636	LEU	2.1
1	B	334	VAL	2.1
1	D	372	PHE	2.1
1	C	817	GLY	2.1
1	C	574	PHE	2.1
1	B	707	ALA	2.1
1	C	760	CYS	2.1
1	C	811	THR	2.1
1	D	816	THR	2.1
1	D	743	ASP	2.0
1	A	792	THR	2.0
1	C	777	SER	2.0
1	B	706	TRP	2.0
1	C	578	GLU	2.0

## 6.2 Non-standard residues in protein, DNA, RNA chains

There are no non-standard protein/DNA/RNA residues in this entry.

### 6.3 Carbohydrates [i](#)

There are no monosaccharides in this entry.

### 6.4 Ligands [i](#)

In the following table, the Atoms column lists the number of modelled atoms in the group and the number defined in the chemical component dictionary. The B-factors column lists the minimum, median, 95<sup>th</sup> percentile and maximum values of B factors of atoms in the group. The column labelled 'Q< 0.9' lists the number of atoms with occupancy less than 0.9.

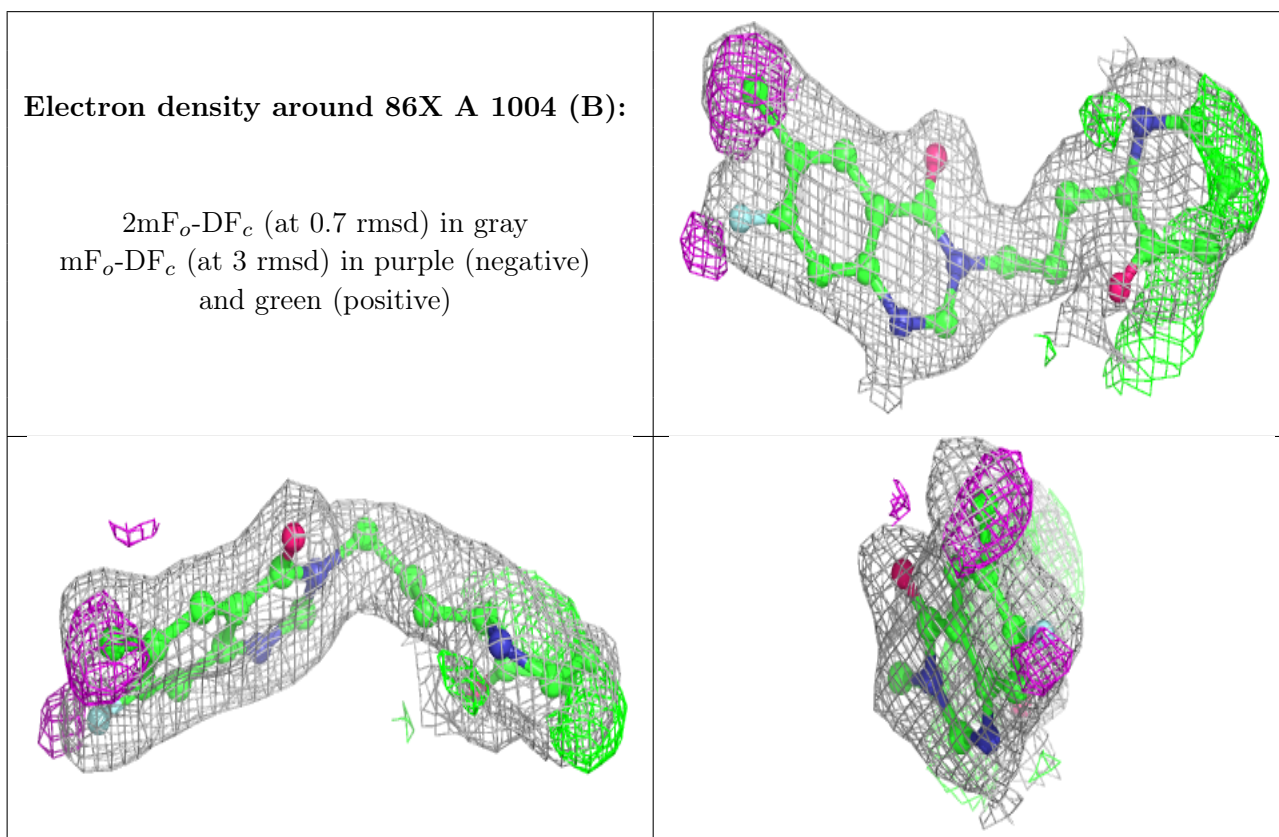
Mol	Type	Chain	Res	Atoms	RSCC	RSR	B-factors(Å <sup>2</sup> )	Q<0.9
5	EDO	B	1005	4/4	0.79	0.14	51,53,54,56	0
6	CL	D	1007	1/1	0.79	0.10	67,67,67,67	0
5	EDO	B	1006	4/4	0.80	0.14	60,61,62,65	0
6	CL	D	1010	1/1	0.83	0.16	67,67,67,67	0
5	EDO	B	1007	4/4	0.85	0.18	55,57,57,61	0
5	EDO	D	1006	4/4	0.85	0.16	43,43,44,47	0
5	EDO	D	1005	4/4	0.86	0.22	54,60,62,62	0
5	EDO	A	1005	4/4	0.87	0.14	55,55,56,68	0
6	CL	C	1005	1/1	0.89	0.16	68,68,68,68	0
4	86X	A	1004[B]	23/23	0.90	0.15	14,20,21,27	23
4	86X	A	1004[A]	23/23	0.90	0.15	13,22,25,33	23
3	MG	C	1002	1/1	0.91	0.19	43,43,43,43	0
5	EDO	A	1008	4/4	0.91	0.25	35,40,41,42	0
5	EDO	A	1009	4/4	0.91	0.20	58,58,60,62	0
5	EDO	A	1010	4/4	0.91	0.15	45,46,47,49	0
4	86X	C	1004[A]	23/23	0.91	0.17	20,25,27,38	23
6	CL	D	1009	1/1	0.91	0.15	66,66,66,66	0
4	86X	C	1004[B]	23/23	0.91	0.17	19,24,27,37	23
4	86X	D	1004[A]	23/23	0.92	0.15	14,24,26,31	23
6	CL	B	1009	1/1	0.92	0.14	71,71,71,71	0
4	86X	D	1004[B]	23/23	0.92	0.15	17,26,28,32	23
4	86X	B	1004[B]	23/23	0.93	0.16	19,26,30,39	23
2	ANP	A	1001	31/31	0.93	0.17	17,20,24,26	0
4	86X	B	1004[A]	23/23	0.93	0.16	16,20,22,26	23
5	EDO	A	1007	4/4	0.93	0.22	52,53,55,56	0
6	CL	B	1008	1/1	0.93	0.06	71,71,71,71	0
3	MG	B	1003	1/1	0.94	0.08	24,24,24,24	0
3	MG	A	1002	1/1	0.94	0.06	40,40,40,40	0
2	ANP	D	1001	31/31	0.95	0.14	20,24,29,34	0
3	MG	B	1002	1/1	0.95	0.04	45,45,45,45	0
6	CL	D	1008	1/1	0.96	0.08	71,71,71,71	0
5	EDO	A	1006	4/4	0.96	0.09	25,28,29,30	0

*Continued on next page...*

Continued from previous page...

Mol	Type	Chain	Res	Atoms	RSCC	RSR	B-factors( $\text{\AA}^2$ )	Q<0.9
2	ANP	B	1001	31/31	0.96	0.15	18,23,29,35	0
2	ANP	C	1001	31/31	0.97	0.13	22,25,29,36	0
3	MG	D	1003	1/1	0.97	0.10	23,23,23,23	0
3	MG	D	1002	1/1	0.98	0.10	45,45,45,45	0
3	MG	A	1003	1/1	0.99	0.07	18,18,18,18	0
3	MG	C	1003	1/1	0.99	0.08	23,23,23,23	0

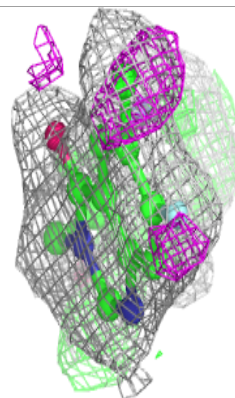
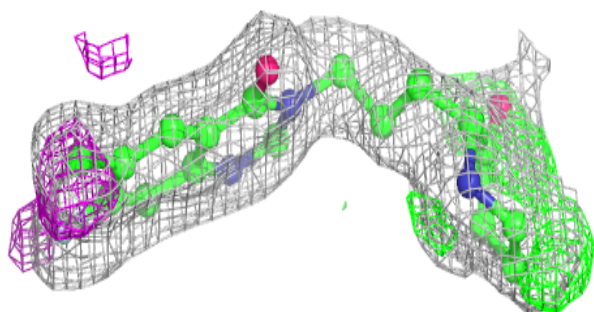
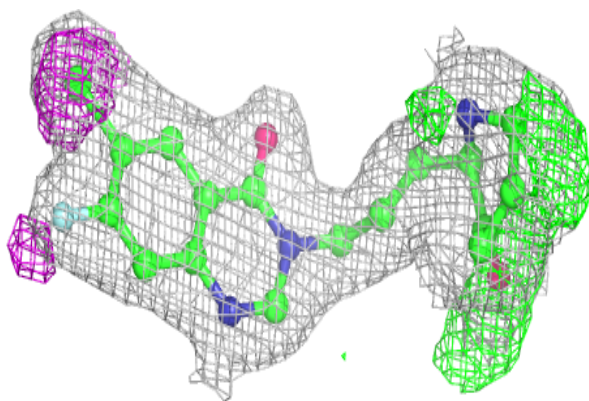
The following is a graphical depiction of the model fit to experimental electron density of all instances of the Ligand of Interest. In addition, ligands with molecular weight > 250 and outliers as shown on the geometry validation Tables will also be included. Each fit is shown from different orientation to approximate a three-dimensional view.



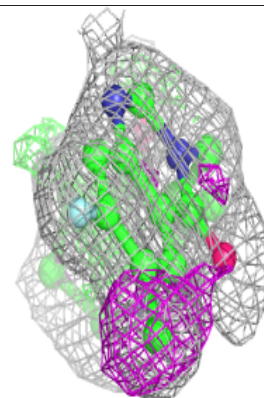
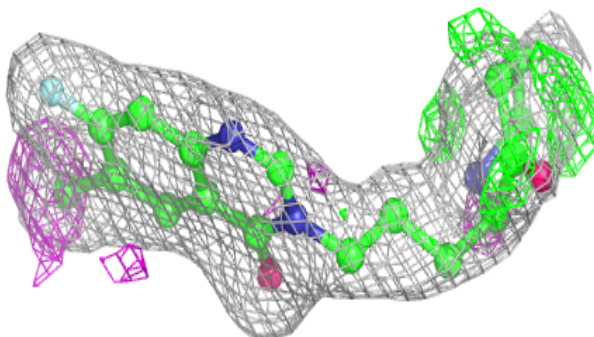
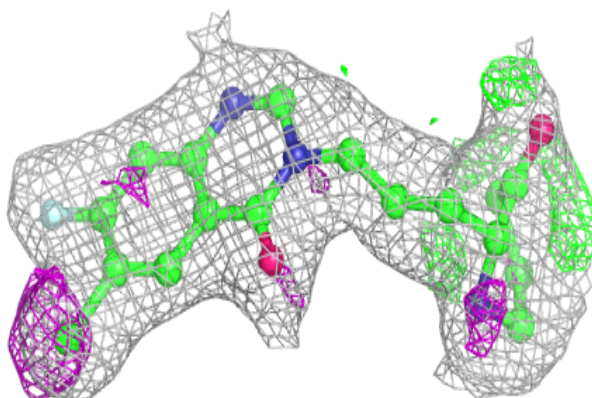


**Electron density around 86X A 1004 (A):**

$2mF_o-DF_c$  (at 0.7 rmsd) in gray  
 $mF_o-DF_c$  (at 3 rmsd) in purple (negative)  
and green (positive)

**Electron density around 86X C 1004 (A):**

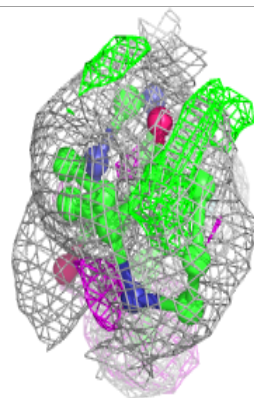
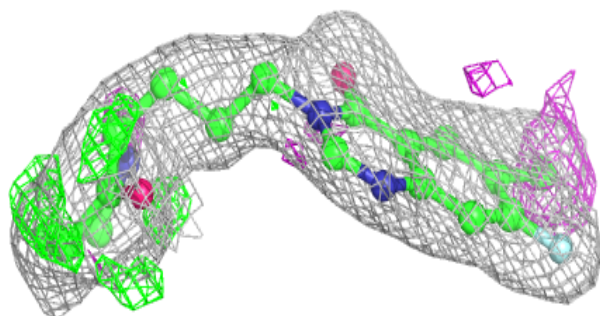
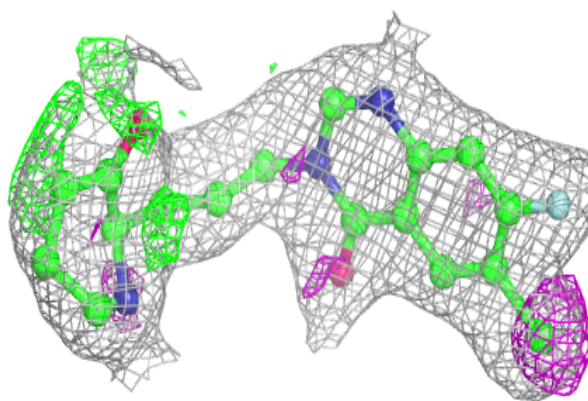
$2mF_o-DF_c$  (at 0.7 rmsd) in gray  
 $mF_o-DF_c$  (at 3 rmsd) in purple (negative)  
and green (positive)



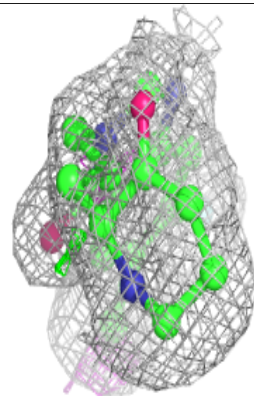
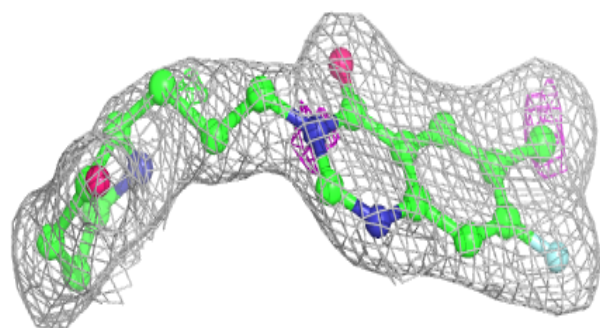
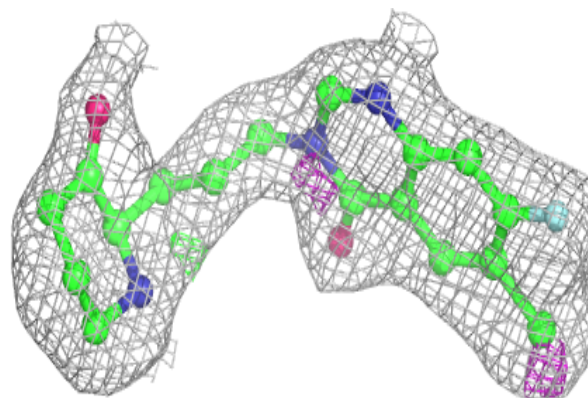


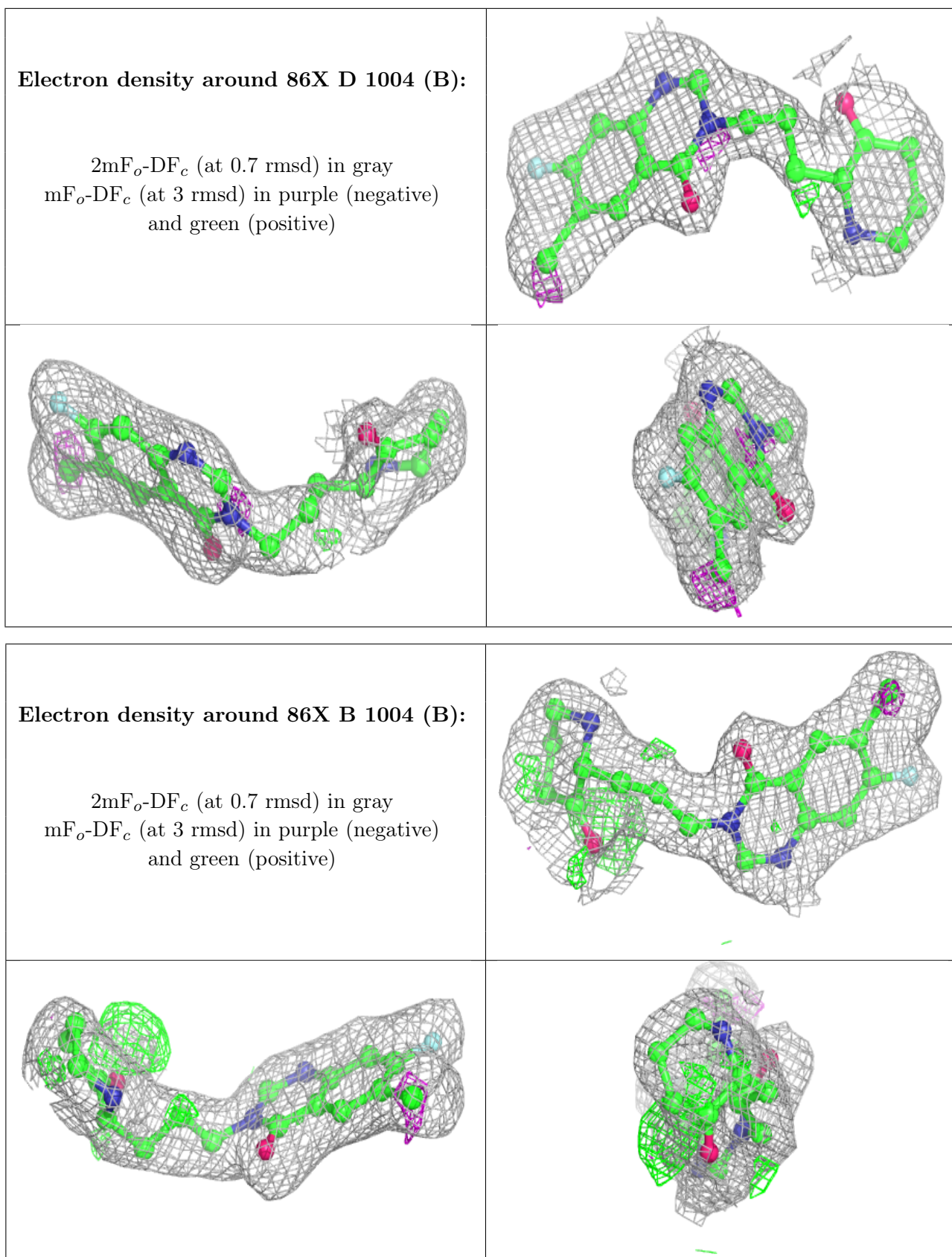
**Electron density around 86X C 1004 (B):**

$2mF_o-DF_c$  (at 0.7 rmsd) in gray  
 $mF_o-DF_c$  (at 3 rmsd) in purple (negative)  
and green (positive)

**Electron density around 86X D 1004 (A):**

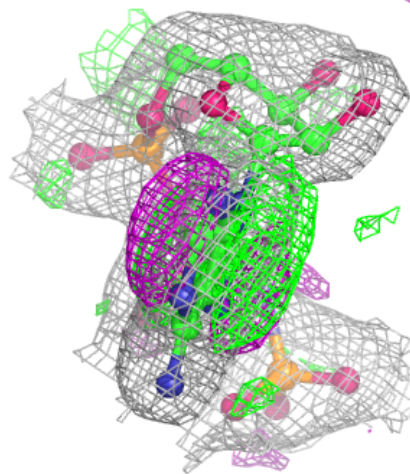
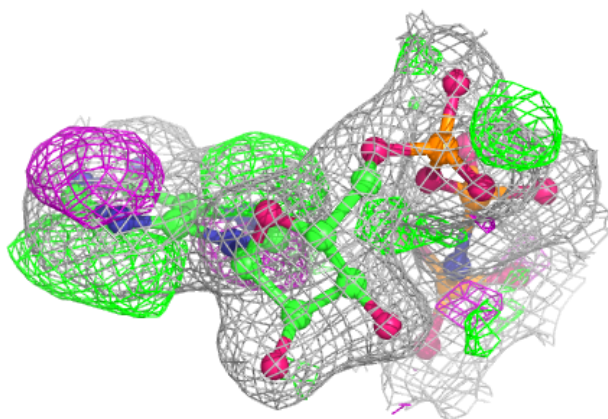
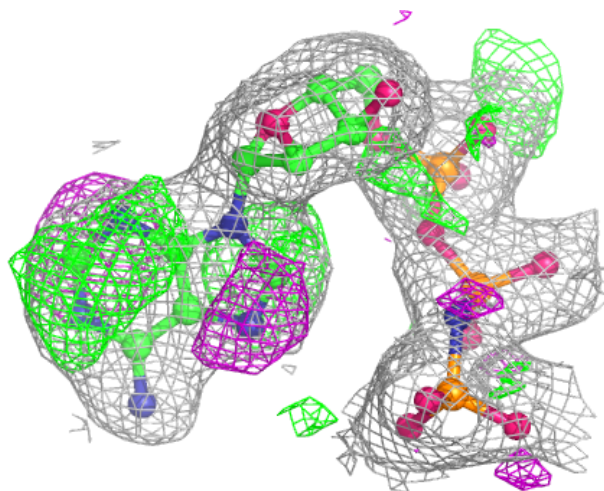
$2mF_o-DF_c$  (at 0.7 rmsd) in gray  
 $mF_o-DF_c$  (at 3 rmsd) in purple (negative)  
and green (positive)





**Electron density around ANP A 1001:**

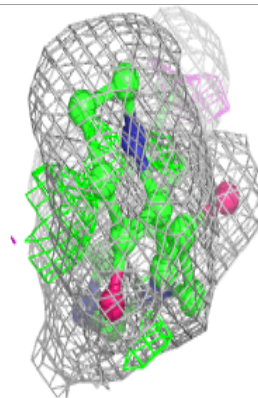
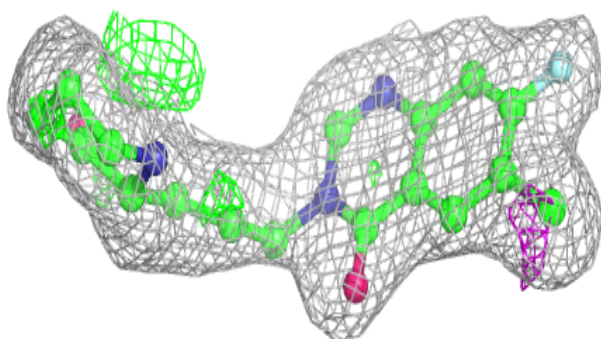
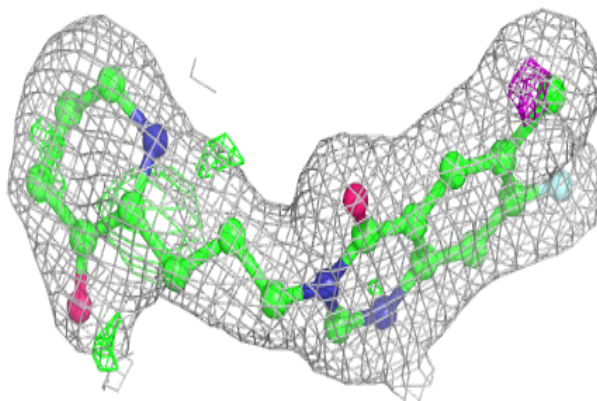
$2mF_o-DF_c$  (at 0.7 rmsd) in gray  
 $mF_o-DF_c$  (at 3 rmsd) in purple (negative)  
and green (positive)





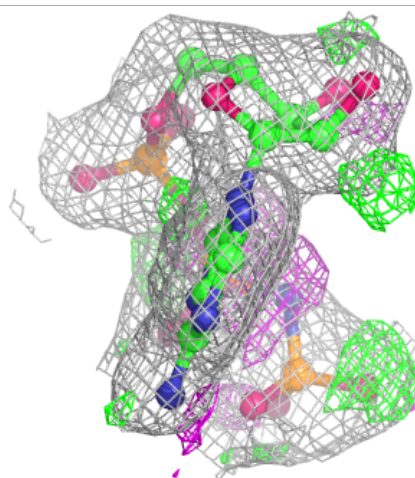
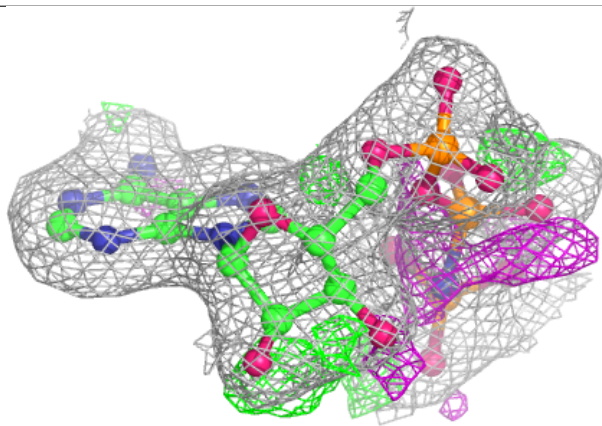
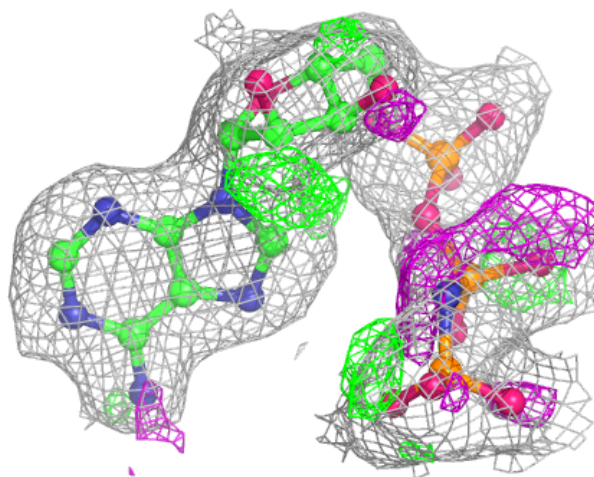
**Electron density around 86X B 1004 (A):**

$2mF_o-DF_c$  (at 0.7 rmsd) in gray  
 $mF_o-DF_c$  (at 3 rmsd) in purple (negative)  
and green (positive)



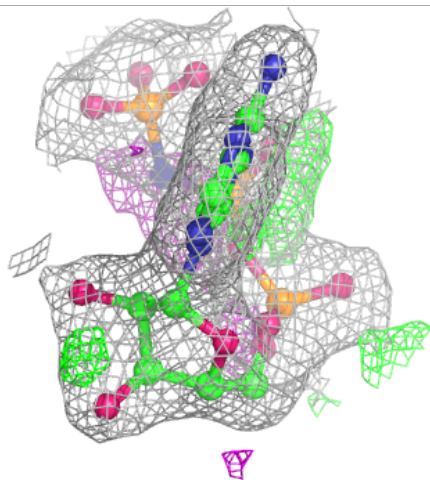
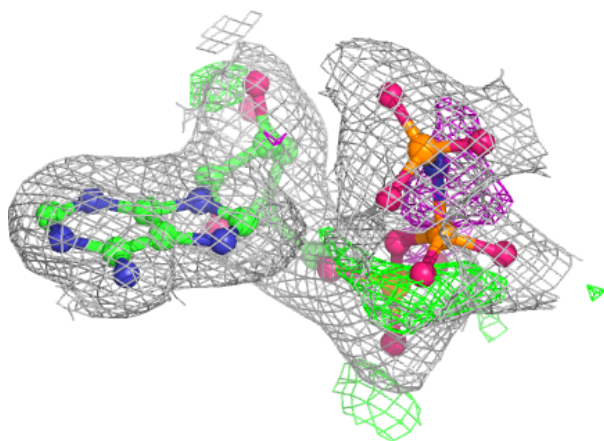
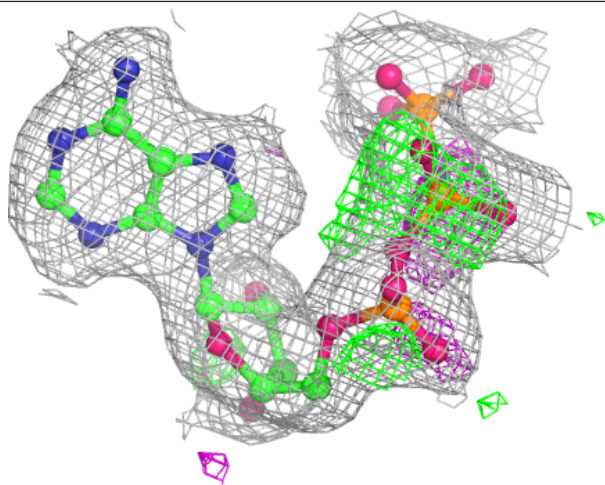
**Electron density around ANP D 1001:**

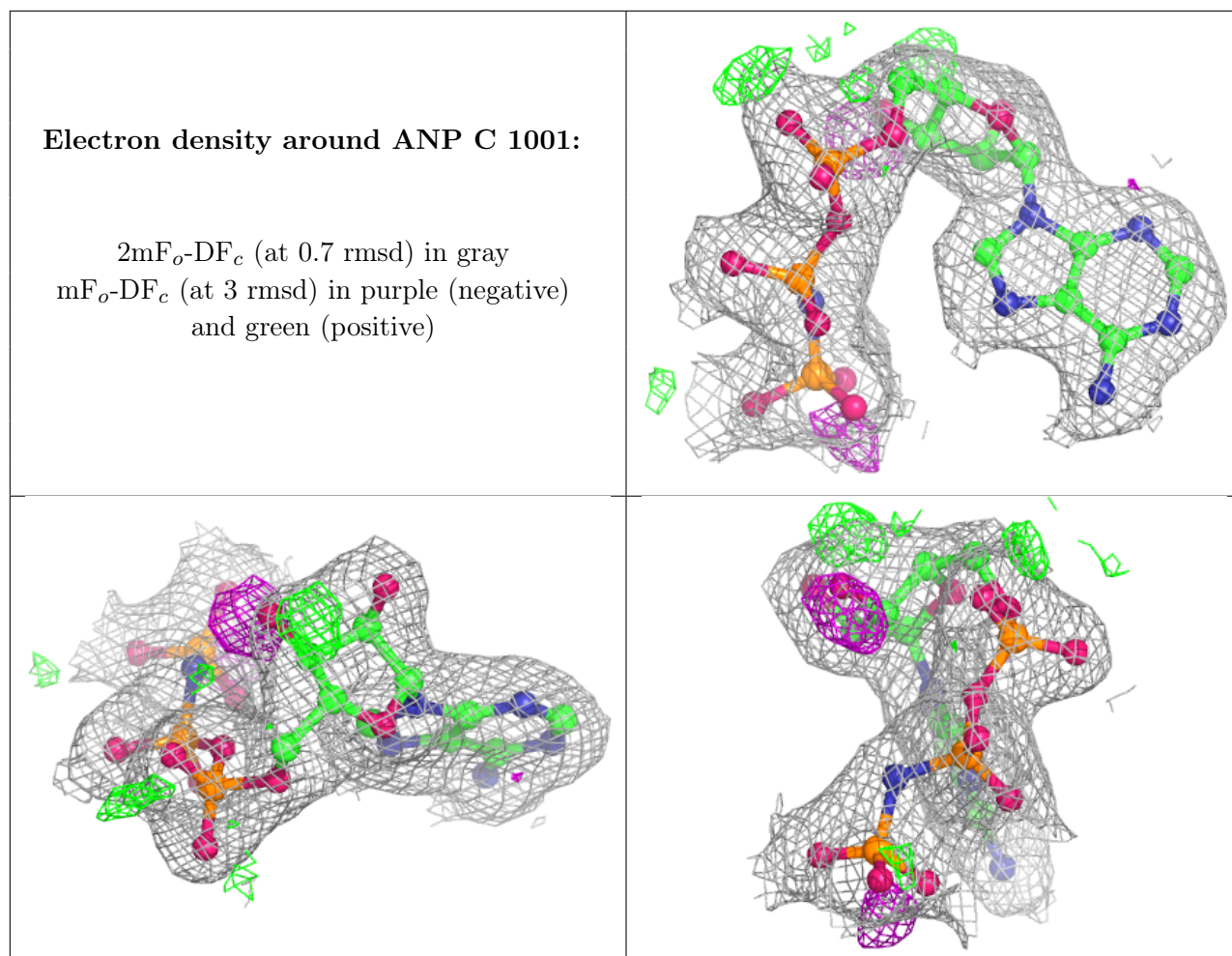
$2mF_o-DF_c$  (at 0.7 rmsd) in gray  
 $mF_o-DF_c$  (at 3 rmsd) in purple (negative)  
and green (positive)



**Electron density around ANP B 1001:**

$2mF_o-DF_c$  (at 0.7 rmsd) in gray  
 $mF_o-DF_c$  (at 3 rmsd) in purple (negative)  
and green (positive)





## 6.5 Other polymers [\(i\)](#)

There are no such residues in this entry.