



Full wwPDB X-ray Structure Validation Report ⓘ

Oct 10, 2023 – 10:39 PM EDT

PDB ID : 6X9I
Title : Human DNMT1(729-1600) Bound to Zebularine-Containing 12mer dsDNA
Authors : Pathuri, S.; Horton, J.R.; Cheng, X.
Deposited on : 2020-06-02
Resolution : 2.20 Å(reported)

This is a Full wwPDB X-ray Structure Validation Report for a publicly released PDB entry.

We welcome your comments at validation@mail.wwpdb.org

A user guide is available at

<https://www.wwpdb.org/validation/2017/XrayValidationReportHelp>

with specific help available everywhere you see the ⓘ symbol.

The types of validation reports are described at

<http://www.wwpdb.org/validation/2017/FAQs#types>.

The following versions of software and data (see [references ⓘ](#)) were used in the production of this report:

MolProbity : 4.02b-467
Mogul : 1.8.5 (274361), CSD as541be (2020)
Xtrriage (Phenix) : 1.13
EDS : 2.35.1
Percentile statistics : 20191225.v01 (using entries in the PDB archive December 25th 2019)
Refmac : 5.8.0158
CCP4 : 7.0.044 (Gargrove)
Ideal geometry (proteins) : Engh & Huber (2001)
Ideal geometry (DNA, RNA) : Parkinson et al. (1996)
Validation Pipeline (wwPDB-VP) : 2.35.1

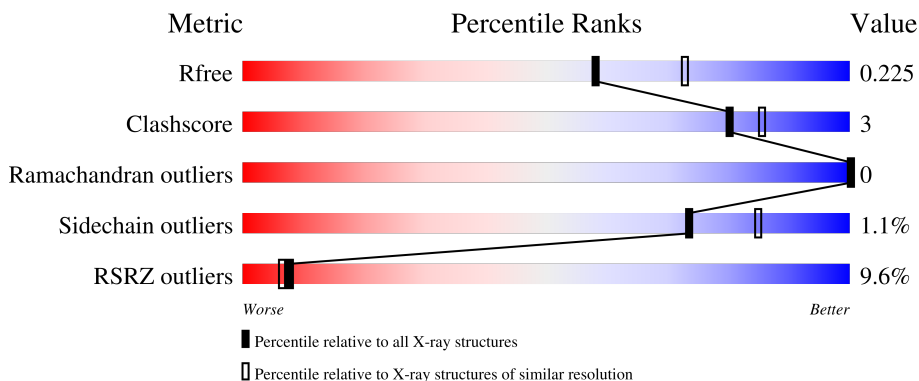
1 Overall quality at a glance i

The following experimental techniques were used to determine the structure:

X-RAY DIFFRACTION

The reported resolution of this entry is 2.20 Å.

Percentile scores (ranging between 0-100) for global validation metrics of the entry are shown in the following graphic. The table shows the number of entries on which the scores are based.



Metric	Whole archive (#Entries)	Similar resolution (#Entries, resolution range(Å))
R_{free}	130704	4898 (2.20-2.20)
Clashscore	141614	5594 (2.20-2.20)
Ramachandran outliers	138981	5503 (2.20-2.20)
Sidechain outliers	138945	5504 (2.20-2.20)
RSRZ outliers	127900	4800 (2.20-2.20)

The table below summarises the geometric issues observed across the polymeric chains and their fit to the electron density. The red, orange, yellow and green segments of the lower bar indicate the fraction of residues that contain outliers for ≥ 3 , 2, 1 and 0 types of geometric quality criteria respectively. A grey segment represents the fraction of residues that are not modelled. The numeric value for each fraction is indicated below the corresponding segment, with a dot representing fractions $\leq 5\%$. The upper red bar (where present) indicates the fraction of residues that have poor fit to the electron density. The numeric value is given above the bar.

Mol	Chain	Length	Quality of chain
1	A	874	
2	C	12	
3	D	12	

2 Entry composition i

There are 8 unique types of molecules in this entry. The entry contains 6956 atoms, of which 0 are hydrogens and 0 are deuteriums.

In the tables below, the ZeroOcc column contains the number of atoms modelled with zero occupancy, the AltConf column contains the number of residues with at least one atom in alternate conformation and the Trace column contains the number of residues modelled with at most 2 atoms.

- Molecule 1 is a protein called DNA (cytosine-5)-methyltransferase 1.

Mol	Chain	Residues	Atoms					ZeroOcc	AltConf	Trace
			Total	C	N	O	S			
1	A	815	6194	3935	1088	1129	42	0	0	0

There are 2 discrepancies between the modelled and reference sequences:

Chain	Residue	Modelled	Actual	Comment	Reference
A	727	HIS	-	expression tag	UNP P26358
A	728	MET	-	expression tag	UNP P26358

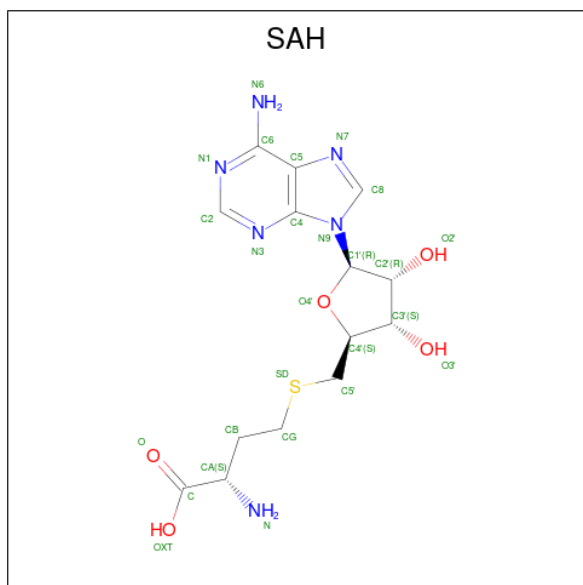
- Molecule 2 is a DNA chain called DNA (5'-D(*GP*AP*GP*GP*CP*(5CM)P*GP*CP*CP*TP*GP*C)-3').

Mol	Chain	Residues	Atoms					ZeroOcc	AltConf	Trace
			Total	C	N	O	P			
2	C	12	244	116	47	70	11	0	0	0

- Molecule 3 is a DNA chain called DNA (5'-D(*GP*CP*AP*GP*G)-R(P*(PYO))-D(P*GP*GP*CP*CP*TP*C)-3').

Mol	Chain	Residues	Atoms					ZeroOcc	AltConf	Trace
			Total	C	N	O	P			
3	D	12	243	115	46	71	11	0	0	0

- Molecule 4 is S-ADENOSYL-L-HOMOCYSTEINE (three-letter code: SAH) (formula: C₁₄H₂₀N₆O₅S).



Mol	Chain	Residues	Atoms					ZeroOcc	AltConf
4	A	1	Total	C	N	O	S	0	0
			26	14	6	5	1		

- Molecule 5 is ZINC ION (three-letter code: ZN) (formula: Zn).

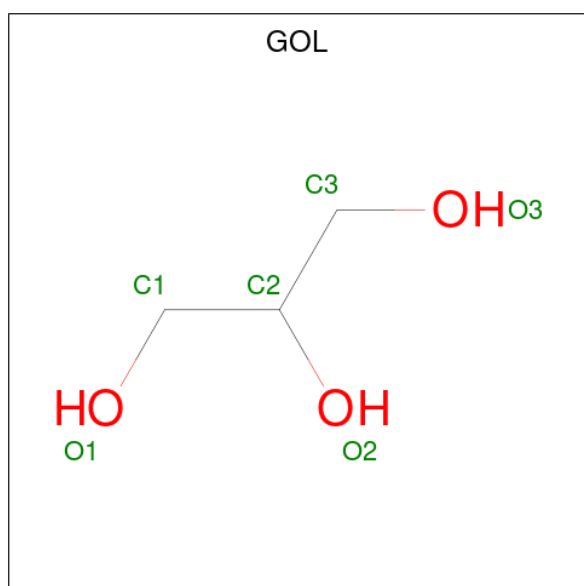
Mol	Chain	Residues	Atoms		ZeroOcc	AltConf
5	A	2	Total	Zn	0	0
			2	2		

- Molecule 6 is 1,2-ETHANEDIOL (three-letter code: EDO) (formula: C₂H₆O₂).



Mol	Chain	Residues	Atoms			ZeroOcc	AltConf
6	A	1	Total	C	O	0	0
			4	2	2		
6	A	1	Total	C	O	0	0
			4	2	2		
6	A	1	Total	C	O	0	0
			4	2	2		
6	A	1	Total	C	O	0	0
			4	2	2		

- Molecule 7 is GLYCEROL (three-letter code: GOL) (formula: C₃H₈O₃).



Mol	Chain	Residues	Atoms			ZeroOcc	AltConf
7	A	1	Total	C	O	0	0
			6	3	3		

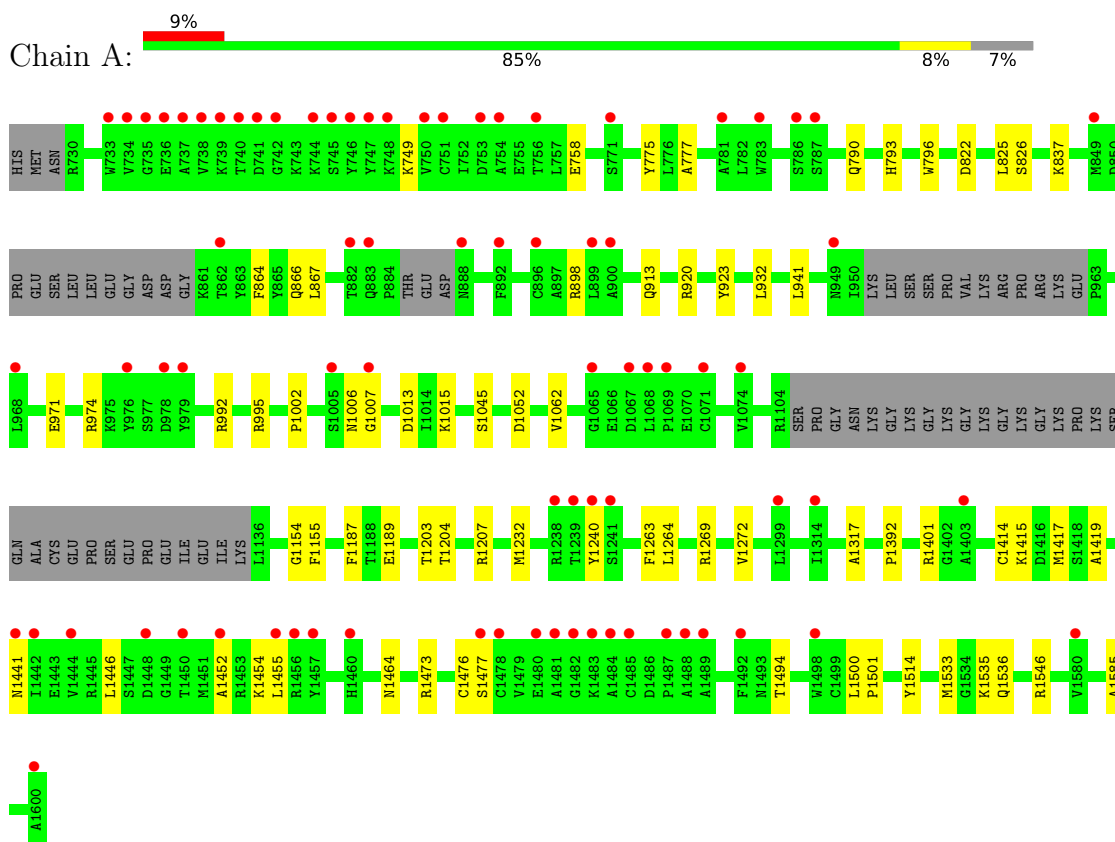
- Molecule 8 is water.

Mol	Chain	Residues	Atoms		ZeroOcc	AltConf
8	A	208	Total	O	0	0
			208	208		
8	C	4	Total	O	0	0
			4	4		
8	D	13	Total	O	0	0
			13	13		

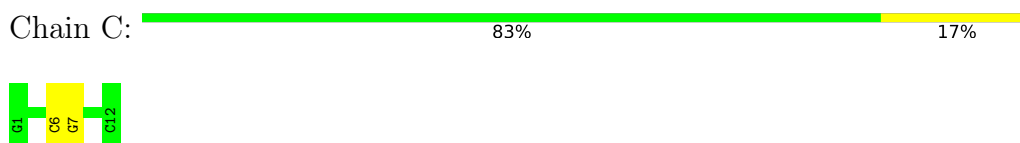
3 Residue-property plots [i](#)

These plots are drawn for all protein, RNA, DNA and oligosaccharide chains in the entry. The first graphic for a chain summarises the proportions of the various outlier classes displayed in the second graphic. The second graphic shows the sequence view annotated by issues in geometry and electron density. Residues are color-coded according to the number of geometric quality criteria for which they contain at least one outlier: green = 0, yellow = 1, orange = 2 and red = 3 or more. A red dot above a residue indicates a poor fit to the electron density ($RSRZ > 2$). Stretches of 2 or more consecutive residues without any outlier are shown as a green connector. Residues present in the sample, but not in the model, are shown in grey.

- Molecule 1: DNA (cytosine-5)-methyltransferase 1



- Molecule 2: DNA (5'-D(*GP*AP*GP*GP*CP*(5CM)P*GP*CP*CP*TP*GP*C)-3')



- Molecule 3: DNA (5'-D(*GP*CP*AP*GP*G)-R(P*(PYO))-D(P*GP*GP*CP*CP*TP*C)-3')





4 Data and refinement statistics

Property	Value	Source
Space group	C 1 2 1	Depositor
Cell constants a, b, c, α , β , γ	161.89Å 77.70Å 115.41Å 90.00° 125.67° 90.00°	Depositor
Resolution (Å)	45.21 – 2.20 45.21 – 2.20	Depositor EDS
% Data completeness (in resolution range)	93.5 (45.21-2.20) 93.5 (45.21-2.20)	Depositor EDS
R_{merge}	0.16	Depositor
R_{sym}	(Not available)	Depositor
$\langle I/\sigma(I) \rangle$ ¹	1.14 (at 2.20Å)	Xtrriage
Refinement program	PHENIX 1.17.1_3660	Depositor
R, R_{free}	0.194 , 0.225 0.194 , 0.225	Depositor DCC
R_{free} test set	1997 reflections (3.62%)	wwPDB-VP
Wilson B-factor (Å ²)	45.6	Xtrriage
Anisotropy	0.337	Xtrriage
Bulk solvent k_{sol} (e/Å ³), B_{sol} (Å ²)	0.29 , 50.5	EDS
L-test for twinning ²	$\langle L \rangle = 0.49$, $\langle L^2 \rangle = 0.32$	Xtrriage
Estimated twinning fraction	No twinning to report.	Xtrriage
F_o, F_c correlation	0.96	EDS
Total number of atoms	6956	wwPDB-VP
Average B, all atoms (Å ²)	70.0	wwPDB-VP

Xtrriage's analysis on translational NCS is as follows: *The largest off-origin peak in the Patterson function is 4.62% of the height of the origin peak. No significant pseudotranslation is detected.*

¹Intensities estimated from amplitudes.

²Theoretical values of $\langle |L| \rangle$, $\langle L^2 \rangle$ for acentric reflections are 0.5, 0.333 respectively for untwinned datasets, and 0.375, 0.2 for perfectly twinned datasets.

5 Model quality [i](#)

5.1 Standard geometry [i](#)

Bond lengths and bond angles in the following residue types are not validated in this section: 5CM, SAH, EDO, PYO, ZN, GOL

The Z score for a bond length (or angle) is the number of standard deviations the observed value is removed from the expected value. A bond length (or angle) with $|Z| > 5$ is considered an outlier worth inspection. RMSZ is the root-mean-square of all Z scores of the bond lengths (or angles).

Mol	Chain	Bond lengths		Bond angles	
		RMSZ	# Z >5	RMSZ	# Z >5
1	A	0.29	0/6356	0.48	0/8654
2	C	0.65	0/250	0.84	0/382
3	D	0.56	0/250	0.82	0/382
All	All	0.32	0/6856	0.51	0/9418

There are no bond length outliers.

There are no bond angle outliers.

There are no chirality outliers.

There are no planarity outliers.

5.2 Too-close contacts [i](#)

In the following table, the Non-H and H(model) columns list the number of non-hydrogen atoms and hydrogen atoms in the chain respectively. The H(added) column lists the number of hydrogen atoms added and optimized by MolProbity. The Clashes column lists the number of clashes within the asymmetric unit, whereas Symm-Clashes lists symmetry-related clashes.

Mol	Chain	Non-H	H(model)	H(added)	Clashes	Symm-Clashes
1	A	6194	0	5780	34	0
2	C	244	0	137	1	0
3	D	243	0	133	2	0
4	A	26	0	19	0	0
5	A	2	0	0	0	0
6	A	16	0	24	0	0
7	A	6	0	8	0	0
8	A	208	0	0	0	0
8	C	4	0	0	0	0
8	D	13	0	0	0	0
All	All	6956	0	6101	35	0

The all-atom clashscore is defined as the number of clashes found per 1000 atoms (including hydrogen atoms). The all-atom clashscore for this structure is 3.

All (35) close contacts within the same asymmetric unit are listed below, sorted by their clash magnitude.

Atom-1	Atom-2	Interatomic distance (Å)	Clash overlap (Å)
1:A:1232:MET:HG3	3:D:17:DG:H2'	1.58	0.83
1:A:1015:LYS:NZ	1:A:1052:ASP:OD1	2.22	0.72
1:A:1415:LYS:HE2	1:A:1417:MET:HE1	1.76	0.66
1:A:995:ARG:NH2	1:A:1062:VAL:O	2.35	0.60
1:A:749:LYS:HG3	1:A:758:GLU:HA	1.85	0.57
1:A:1464:ASN:O	1:A:1473:ARG:NH1	2.36	0.57
1:A:793:HIS:ND1	1:A:822:ASP:OD1	2.39	0.56
1:A:1006:ASN:OD1	1:A:1007:GLY:N	2.38	0.56
1:A:1203:THR:HG23	1:A:1204:THR:HG23	1.90	0.54
1:A:790:GLN:HB3	1:A:825:LEU:HD12	1.90	0.52
1:A:1154:GLY:HA3	1:A:1585:ALA:HB3	1.90	0.52
1:A:1535:LYS:HE3	2:C:7:DG:O6	2.10	0.51
1:A:1455:LEU:HB2	1:A:1494:THR:OG1	2.12	0.49
1:A:866:GLN:HG3	1:A:867:LEU:HG	1.95	0.49
1:A:1514:TYR:HE2	1:A:1533:MET:HG3	1.79	0.47
1:A:1392:PRO:HB3	1:A:1401:ARG:HD3	1.97	0.47
1:A:941:LEU:HB2	1:A:992:ARG:HB2	1.97	0.46
1:A:1187:PHE:HB3	1:A:1189:GLU:HG3	1.97	0.46
1:A:1446:LEU:HD21	1:A:1452:ALA:HB2	1.99	0.45
1:A:1500:LEU:HB2	1:A:1501:PRO:HD3	1.98	0.45
1:A:971:GLU:OE1	1:A:974:ARG:HD2	2.17	0.44
1:A:1414:CYS:SG	1:A:1546:ARG:HD2	2.58	0.44
1:A:1155:PHE:HZ	1:A:1264:LEU:HD13	1.82	0.44
1:A:1476:CYS:SG	1:A:1477:SER:N	2.92	0.43
1:A:837:LYS:HG2	1:A:864:PHE:HB2	2.00	0.43
1:A:775:TYR:HB3	1:A:796:TRP:CZ3	2.54	0.42
1:A:913:GLN:HG2	1:A:923:TYR:CE2	2.54	0.42
1:A:1419:ALA:HB1	1:A:1446:LEU:HB3	2.01	0.42
1:A:777:ALA:HB2	1:A:796:TRP:CE3	2.55	0.42
1:A:898:ARG:H	1:A:898:ARG:HG2	1.68	0.41
1:A:1269:ARG:O	1:A:1272:VAL:HG22	2.21	0.41
3:D:21:DC:H2''	3:D:22:DC:C6	2.56	0.41
1:A:1263:PHE:HB3	1:A:1317:ALA:HB3	2.03	0.40
1:A:1002:PRO:HD2	1:A:1013:ASP:O	2.21	0.40
1:A:1441:ASN:O	1:A:1454:LYS:HE3	2.21	0.40

There are no symmetry-related clashes.

5.3 Torsion angles [i](#)

5.3.1 Protein backbone [i](#)

In the following table, the Percentiles column shows the percent Ramachandran outliers of the chain as a percentile score with respect to all X-ray entries followed by that with respect to entries of similar resolution.

The Analysed column shows the number of residues for which the backbone conformation was analysed, and the total number of residues.

Mol	Chain	Analysed	Favoured	Allowed	Outliers	Percentiles
1	A	805/874 (92%)	782 (97%)	23 (3%)	0	100 100

There are no Ramachandran outliers to report.

5.3.2 Protein sidechains [i](#)

In the following table, the Percentiles column shows the percent sidechain outliers of the chain as a percentile score with respect to all X-ray entries followed by that with respect to entries of similar resolution.

The Analysed column shows the number of residues for which the sidechain conformation was analysed, and the total number of residues.

Mol	Chain	Analysed	Rotameric	Outliers	Percentiles
1	A	621/753 (82%)	614 (99%)	7 (1%)	73 85

All (7) residues with a non-rotameric sidechain are listed below:

Mol	Chain	Res	Type
1	A	826	SER
1	A	920	ARG
1	A	932	LEU
1	A	1045	SER
1	A	1207	ARG
1	A	1240	TYR
1	A	1536	GLN

Sometimes sidechains can be flipped to improve hydrogen bonding and reduce clashes. There are no such sidechains identified.

5.3.3 RNA [i](#)

There are no RNA molecules in this entry.

5.4 Non-standard residues in protein, DNA, RNA chains [i](#)

2 non-standard protein/DNA/RNA residues are modelled in this entry.

In the following table, the Counts columns list the number of bonds (or angles) for which Mogul statistics could be retrieved, the number of bonds (or angles) that are observed in the model and the number of bonds (or angles) that are defined in the Chemical Component Dictionary. The Link column lists molecule types, if any, to which the group is linked. The Z score for a bond length (or angle) is the number of standard deviations the observed value is removed from the expected value. A bond length (or angle) with $|Z| > 2$ is considered an outlier worth inspection. RMSZ is the root-mean-square of all Z scores of the bond lengths (or angles).

Mol	Type	Chain	Res	Link	Bond lengths			Bond angles		
					Counts	RMSZ	# Z > 2	Counts	RMSZ	# Z > 2
2	5CM	C	6	2,3	17,21,22	1.64	5 (29%)	24,30,33	1.67	6 (25%)
3	PYO	D	18	1,3	16,20,21	1.19	2 (12%)	22,28,31	0.68	0

In the following table, the Chirals column lists the number of chiral outliers, the number of chiral centers analysed, the number of these observed in the model and the number defined in the Chemical Component Dictionary. Similar counts are reported in the Torsion and Rings columns. '-' means no outliers of that kind were identified.

Mol	Type	Chain	Res	Link	Chirals	Torsions	Rings
2	5CM	C	6	2,3	-	5/7/21/22	0/2/2/2
3	PYO	D	18	1,3	-	4/7/25/26	0/2/2/2

All (7) bond length outliers are listed below:

Mol	Chain	Res	Type	Atoms	Z	Observed(Å)	Ideal(Å)
2	C	6	5CM	O2-C2	-3.62	1.17	1.23
2	C	6	5CM	C2-N1	3.19	1.46	1.40
3	D	18	PYO	C2-N1	3.02	1.46	1.40
2	C	6	5CM	C6-C5	2.97	1.39	1.34
3	D	18	PYO	O2-C2	-2.22	1.19	1.23
2	C	6	5CM	C4-N3	2.10	1.37	1.34
2	C	6	5CM	C6-N1	2.08	1.41	1.38

All (6) bond angle outliers are listed below:

Mol	Chain	Res	Type	Atoms	Z	Observed(°)	Ideal(°)
2	C	6	5CM	O4'-C1'-N1	3.73	114.52	107.86
2	C	6	5CM	C6-N1-C2	-2.90	116.86	120.87
2	C	6	5CM	C1'-N1-C2	2.88	122.78	117.74
2	C	6	5CM	C5A-C5-C6	-2.76	119.16	122.85
2	C	6	5CM	C5-C6-N1	-2.38	120.89	123.34
2	C	6	5CM	C4-N3-C2	-2.23	117.68	120.69

There are no chirality outliers.

All (9) torsion outliers are listed below:

Mol	Chain	Res	Type	Atoms
3	D	18	PYO	C2'-C1'-N1-C6
3	D	18	PYO	C2'-C1'-N1-C2
2	C	6	5CM	C2'-C1'-N1-C6
2	C	6	5CM	O4'-C1'-N1-C6
3	D	18	PYO	O4'-C1'-N1-C6
3	D	18	PYO	O4'-C1'-N1-C2
2	C	6	5CM	O4'-C1'-N1-C2
2	C	6	5CM	C3'-C4'-C5'-O5'
2	C	6	5CM	C2'-C1'-N1-C2

There are no ring outliers.

No monomer is involved in short contacts.

5.5 Carbohydrates [i](#)

There are no monosaccharides in this entry.

5.6 Ligand geometry [i](#)

Of 8 ligands modelled in this entry, 2 are monoatomic - leaving 6 for Mogul analysis.

In the following table, the Counts columns list the number of bonds (or angles) for which Mogul statistics could be retrieved, the number of bonds (or angles) that are observed in the model and the number of bonds (or angles) that are defined in the Chemical Component Dictionary. The Link column lists molecule types, if any, to which the group is linked. The Z score for a bond length (or angle) is the number of standard deviations the observed value is removed from the expected value. A bond length (or angle) with $|Z| > 2$ is considered an outlier worth inspection. RMSZ is the root-mean-square of all Z scores of the bond lengths (or angles).

Mol	Type	Chain	Res	Link	Bond lengths			Bond angles		
					Counts	RMSZ	# Z > 2	Counts	RMSZ	# Z > 2
6	EDO	A	1706	-	3,3,3	0.47	0	2,2,2	0.33	0
7	GOL	A	1705	-	5,5,5	0.88	0	5,5,5	0.98	0
6	EDO	A	1707	-	3,3,3	0.49	0	2,2,2	0.28	0
4	SAH	A	1701	-	24,28,28	0.74	0	25,40,40	0.77	0
6	EDO	A	1708	-	3,3,3	0.46	0	2,2,2	0.34	0
6	EDO	A	1704	-	3,3,3	0.49	0	2,2,2	0.35	0

In the following table, the Chirals column lists the number of chiral outliers, the number of chiral centers analysed, the number of these observed in the model and the number defined in the Chemical Component Dictionary. Similar counts are reported in the Torsion and Rings columns. '2' means no outliers of that kind were identified.

Mol	Type	Chain	Res	Link	Chirals	Torsions	Rings
6	EDO	A	1706	-	-	0/1/1/1	-
7	GOL	A	1705	-	-	2/4/4/4	-
6	EDO	A	1707	-	-	1/1/1/1	-
4	SAH	A	1701	-	-	0/11/31/31	0/3/3/3
6	EDO	A	1708	-	-	1/1/1/1	-
6	EDO	A	1704	-	-	0/1/1/1	-

There are no bond length outliers.

There are no bond angle outliers.

There are no chirality outliers.

All (4) torsion outliers are listed below:

Mol	Chain	Res	Type	Atoms
7	A	1705	GOL	O1-C1-C2-C3
7	A	1705	GOL	O1-C1-C2-O2
6	A	1707	EDO	O1-C1-C2-O2
6	A	1708	EDO	O1-C1-C2-O2

There are no ring outliers.

No monomer is involved in short contacts.

5.7 Other polymers [\(i\)](#)

There are no such residues in this entry.

5.8 Polymer linkage issues

There are no chain breaks in this entry.

6 Fit of model and data

6.1 Protein, DNA and RNA chains

In the following table, the column labelled '#RSRZ > 2' contains the number (and percentage) of RSRZ outliers, followed by percent RSRZ outliers for the chain as percentile scores relative to all X-ray entries and entries of similar resolution. The OWAB column contains the minimum, median, 95th percentile and maximum values of the occupancy-weighted average B-factor per residue. The column labelled 'Q < 0.9' lists the number of (and percentage) of residues with an average occupancy less than 0.9.

Mol	Chain	Analysed	<RSRZ>	#RSRZ>2	OWAB(Å ²)	Q<0.9
1	A	815/874 (93%)	0.45	79 (9%) 7 6	30, 66, 126, 158	0
2	C	11/12 (91%)	-0.38	0 100 100	68, 87, 126, 142	0
3	D	11/12 (91%)	-0.05	1 (9%) 9 8	62, 78, 127, 142	0
All	All	837/898 (93%)	0.43	80 (9%) 8 6	30, 66, 126, 158	0

All (80) RSRZ outliers are listed below:

Mol	Chain	Res	Type	RSRZ
1	A	737	ALA	9.8
1	A	740	THR	8.8
1	A	746	TYR	6.7
1	A	1480	GLU	6.4
1	A	1477	SER	6.4
1	A	738	VAL	6.1
1	A	1069	PRO	5.7
1	A	1005	SER	5.7
1	A	1481	ALA	5.6
1	A	747	TYR	5.4
1	A	1239	THR	5.4
1	A	888	ASN	5.4
1	A	1492	PHE	4.8
1	A	1489	ALA	4.7
1	A	1600	ALA	4.6
1	A	1456	ARG	4.5
1	A	742	GLY	4.3
1	A	1484	ALA	4.3
1	A	1482	GLY	4.3
1	A	735	GLY	4.3
1	A	1485	CYS	4.2
1	A	754	ALA	4.0
1	A	736	GLU	3.8

Continued on next page...

Continued from previous page...

Mol	Chain	Res	Type	RSRZ
1	A	1240	TYR	3.7
1	A	1068	LEU	3.7
1	A	751	CYS	3.6
1	A	978	ASP	3.5
1	A	739	LYS	3.4
1	A	1444	VAL	3.4
1	A	900	ALA	3.4
1	A	750	VAL	3.3
1	A	744	LYS	3.2
1	A	976	TYR	3.2
1	A	1071	CYS	3.1
1	A	1241	SER	3.1
1	A	892	PHE	3.1
1	A	1067	ASP	3.0
1	A	748	LYS	3.0
1	A	771	SER	3.0
1	A	968	LEU	3.0
1	A	882	THR	2.9
1	A	787	SER	2.9
1	A	1457	TYR	2.9
1	A	741	ASP	2.9
1	A	1498	TRP	2.8
1	A	1007	GLY	2.8
1	A	1455	LEU	2.7
1	A	862	THR	2.7
1	A	786	SER	2.7
1	A	1488	ALA	2.7
1	A	745	SER	2.7
1	A	756	THR	2.7
1	A	734	VAL	2.7
1	A	1448	ASP	2.5
1	A	1441	ASN	2.5
1	A	899	LEU	2.4
1	A	1483	LYS	2.4
1	A	733	TRP	2.4
1	A	1478	CYS	2.3
1	A	1452	ALA	2.2
1	A	849	MET	2.2
1	A	1065	GLY	2.2
1	A	979	TYR	2.2
1	A	1074	VAL	2.2
1	A	1314	ILE	2.1

Continued on next page...

Continued from previous page...

Mol	Chain	Res	Type	RSRZ
3	D	24	DC	2.1
1	A	1442	ILE	2.1
1	A	1487	PRO	2.1
1	A	896	CYS	2.1
1	A	781	ALA	2.1
1	A	1580	VAL	2.1
1	A	1450	THR	2.1
1	A	1238	ARG	2.1
1	A	1460	HIS	2.1
1	A	753	ASP	2.0
1	A	883	GLN	2.0
1	A	783	TRP	2.0
1	A	1299	LEU	2.0
1	A	1403	ALA	2.0
1	A	949	ASN	2.0

6.2 Non-standard residues in protein, DNA, RNA chains [i](#)

In the following table, the Atoms column lists the number of modelled atoms in the group and the number defined in the chemical component dictionary. The B-factors column lists the minimum, median, 95th percentile and maximum values of B factors of atoms in the group. The column labelled 'Q< 0.9' lists the number of atoms with occupancy less than 0.9.

Mol	Type	Chain	Res	Atoms	RSCC	RSR	B-factors(Å ²)	Q<0.9
2	5CM	C	6	20/21	0.94	0.12	78,81,92,103	0
3	PYO	D	18	19/20	0.97	0.21	39,50,59,60	0

6.3 Carbohydrates [i](#)

There are no monosaccharides in this entry.

6.4 Ligands [i](#)

In the following table, the Atoms column lists the number of modelled atoms in the group and the number defined in the chemical component dictionary. The B-factors column lists the minimum, median, 95th percentile and maximum values of B factors of atoms in the group. The column labelled 'Q< 0.9' lists the number of atoms with occupancy less than 0.9.

Mol	Type	Chain	Res	Atoms	RSCC	RSR	B-factors(Å ²)	Q<0.9
7	GOL	A	1705	6/6	0.75	0.30	65,68,79,80	0

Continued on next page...

Continued from previous page...

Mol	Type	Chain	Res	Atoms	RSCC	RSR	B-factors(\AA^2)	Q<0.9
6	EDO	A	1706	4/4	0.82	0.16	78,80,80,81	0
6	EDO	A	1704	4/4	0.82	0.12	63,71,71,76	0
6	EDO	A	1707	4/4	0.85	0.19	61,64,68,71	0
6	EDO	A	1708	4/4	0.87	0.37	51,56,57,63	0
5	ZN	A	1702	1/1	0.93	0.10	89,89,89,89	0
4	SAH	A	1701	26/26	0.96	0.14	33,39,48,50	0
5	ZN	A	1703	1/1	0.97	0.04	78,78,78,78	0

6.5 Other polymers [\(i\)](#)

There are no such residues in this entry.