



Full wwPDB X-ray Structure Validation Report ⓘ

Dec 17, 2023 – 04:45 am GMT

PDB ID : 2X20
Title : Structure of Peridinin-Chlorophyll-Protein reconstituted with Chl-b
Authors : Schulte, T.; Hiller, R.G.; Hofmann, E.
Deposited on : 2010-01-09
Resolution : 1.95 Å(reported)

This is a Full wwPDB X-ray Structure Validation Report for a publicly released PDB entry.

We welcome your comments at validation@mail.wwpdb.org

A user guide is available at

<https://www.wwpdb.org/validation/2017/XrayValidationReportHelp>

with specific help available everywhere you see the ⓘ symbol.

The types of validation reports are described at

<http://www.wwpdb.org/validation/2017/FAQs#types>.

The following versions of software and data (see [references ⓘ](#)) were used in the production of this report:

MolProbity : 4.02b-467
Mogul : 1.8.4, CSD as541be (2020)
Xtriage (Phenix) : 1.13
EDS : 2.36
buster-report : 1.1.7 (2018)
Percentile statistics : 20191225.v01 (using entries in the PDB archive December 25th 2019)
Refmac : 5.8.0158
CCP4 : 7.0.044 (Gargrove)
Ideal geometry (proteins) : Engh & Huber (2001)
Ideal geometry (DNA, RNA) : Parkinson et al. (1996)
Validation Pipeline (wwPDB-VP) : 2.36

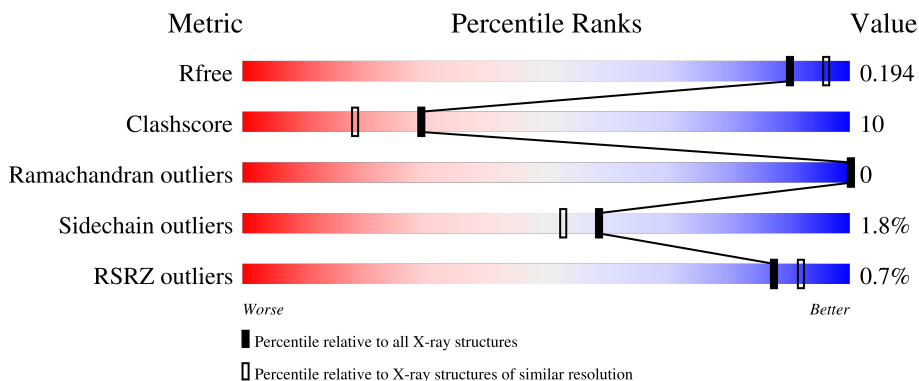
1 Overall quality at a glance

The following experimental techniques were used to determine the structure:

X-RAY DIFFRACTION

The reported resolution of this entry is 1.95 Å.

Percentile scores (ranging between 0-100) for global validation metrics of the entry are shown in the following graphic. The table shows the number of entries on which the scores are based.



Metric	Whole archive (#Entries)	Similar resolution (#Entries, resolution range(Å))
R_{free}	130704	2580 (1.96-1.96)
Clashscore	141614	2705 (1.96-1.96)
Ramachandran outliers	138981	2678 (1.96-1.96)
Sidechain outliers	138945	2678 (1.96-1.96)
RSRZ outliers	127900	2539 (1.96-1.96)

The table below summarises the geometric issues observed across the polymeric chains and their fit to the electron density. The red, orange, yellow and green segments of the lower bar indicate the fraction of residues that contain outliers for ≥ 3 , 2, 1 and 0 types of geometric quality criteria respectively. A grey segment represents the fraction of residues that are not modelled. The numeric value for each fraction is indicated below the corresponding segment, with a dot representing fractions $\leq 5\%$. The upper red bar (where present) indicates the fraction of residues that have poor fit to the electron density. The numeric value is given above the bar.

Mol	Chain	Length	Quality of chain
1	M	151	

The following table lists non-polymeric compounds, carbohydrate monomers and non-standard residues in protein, DNA, RNA chains that are outliers for geometric or electron-density-fit criteria:

Mol	Type	Chain	Res	Chirality	Geometry	Clashes	Electron density
2	CHL	M	601[A]	X	-	-	-

Continued on next page...

Continued from previous page...

Mol	Type	Chain	Res	Chirality	Geometry	Clashes	Electron density
2	CHL	M	601[B]	X	-	-	-

2 Entry composition [i](#)

There are 10 unique types of molecules in this entry. The entry contains 1689 atoms, of which 0 are hydrogens and 0 are deuteriums.

In the tables below, the ZeroOcc column contains the number of atoms modelled with zero occupancy, the AltConf column contains the number of residues with at least one atom in alternate conformation and the Trace column contains the number of residues modelled with at most 2 atoms.

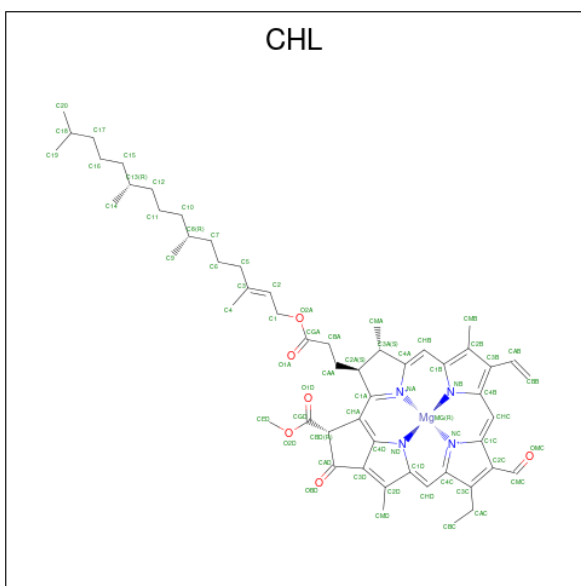
- Molecule 1 is a protein called PERIDININ-CHLOROPHYLL A-BINDING PROTEIN, CHLOROPLASTIC.

Mol	Chain	Residues	Atoms					ZeroOcc	AltConf	Trace
			Total	C	N	O	S			
1	M	151	1149	726	192	225	6	0	4	0

There are 2 discrepancies between the modelled and reference sequences:

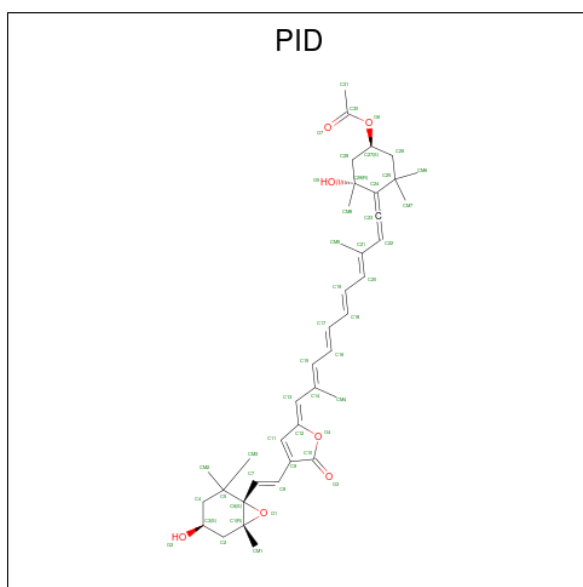
Chain	Residue	Modelled	Actual	Comment	Reference
M	87	SER	ASN	conflict	UNP P80484
M	128	ASN	SER	conflict	UNP P80484

- Molecule 2 is CHLOROPHYLL B (three-letter code: CHL) (formula: $C_{55}H_{70}MgN_4O_6$).



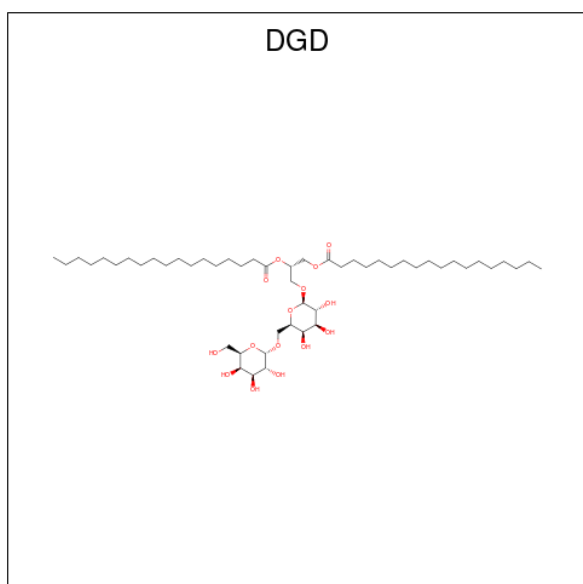
Mol	Chain	Residues	Atoms					ZeroOcc	AltConf
			Total	C	Mg	N	O		
2	M	1	69	58	1	4	6	0	1

- Molecule 3 is PERIDININ (three-letter code: PID) (formula: $C_{39}H_{50}O_7$).



Mol	Chain	Residues	Atoms			ZeroOcc	AltConf
3	M	1	Total	C	O	0	0
			46	39	7		
3	M	1	Total	C	O	0	1
			51	42	9		
3	M	1	Total	C	O	0	0
			46	39	7		
3	M	1	Total	C	O	0	0
			46	39	7		

- Molecule 4 is DIGALACTOSYL DIACYL GLYCEROL (DGD) (three-letter code: DGD) (formula: $C_{51}H_{96}O_{15}$).



Mol	Chain	Residues	Atoms			ZeroOcc	AltConf
4	M	1	Total	C	O	0	0
			66	51	15		

- Molecule 5 is CADMIUM ION (three-letter code: CD) (formula: Cd).

Mol	Chain	Residues	Atoms		ZeroOcc	AltConf
5	M	6	Total	Cd	0	2
			8	8		

- Molecule 6 is CHLORIDE ION (three-letter code: CL) (formula: Cl).

Mol	Chain	Residues	Atoms		ZeroOcc	AltConf
6	M	3	Total	Cl	0	0
			3	3		

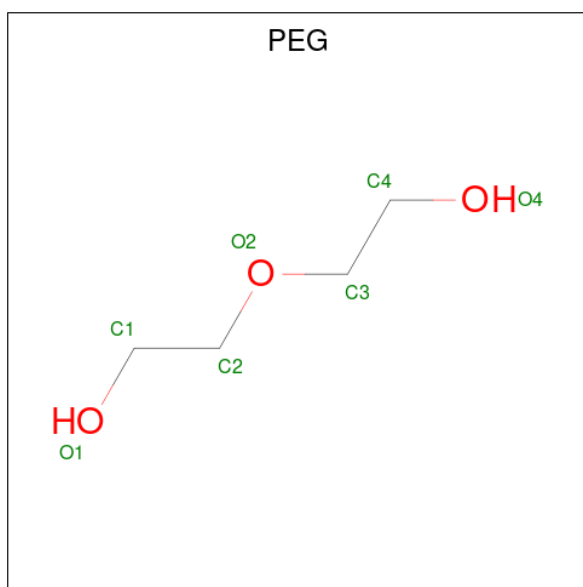
- Molecule 7 is POTASSIUM ION (three-letter code: K) (formula: K).

Mol	Chain	Residues	Atoms		ZeroOcc	AltConf
7	M	1	Total	K	0	0
			1	1		

- Molecule 8 is SODIUM ION (three-letter code: NA) (formula: Na).

Mol	Chain	Residues	Atoms		ZeroOcc	AltConf
8	M	1	Total	Na	0	0
			1	1		

- Molecule 9 is DI(HYDROXYETHYL)ETHER (three-letter code: PEG) (formula: C₄H₁₀O₃).



Mol	Chain	Residues	Atoms	ZeroOcc	AltConf
9	M	1	Total C O 7 4 3	0	0


- Molecule 10 is water.

Mol	Chain	Residues	Atoms	ZeroOcc	AltConf
10	M	196	Total O 196 196	0	0

3 Residue-property plots [i](#)

These plots are drawn for all protein, RNA, DNA and oligosaccharide chains in the entry. The first graphic for a chain summarises the proportions of the various outlier classes displayed in the second graphic. The second graphic shows the sequence view annotated by issues in geometry and electron density. Residues are color-coded according to the number of geometric quality criteria for which they contain at least one outlier: green = 0, yellow = 1, orange = 2 and red = 3 or more. A red dot above a residue indicates a poor fit to the electron density ($RSRZ > 2$). Stretches of 2 or more consecutive residues without any outlier are shown as a green connector. Residues present in the sample, but not in the model, are shown in grey.

- Molecule 1: PERIDININ-CHLOROPHYLL A-BINDING PROTEIN, CHLOROPLASTIC

Chain M:  % 85% 14%



4 Data and refinement statistics

Property	Value	Source
Space group	C 2 2 21	Depositor
Cell constants a, b, c, α , β , γ	68.57Å 82.00Å 75.41Å 90.00° 90.00° 90.00°	Depositor
Resolution (Å)	43.15 – 1.95 41.00 – 1.95	Depositor EDS
% Data completeness (in resolution range)	100.0 (43.15-1.95) 99.3 (41.00-1.95)	Depositor EDS
R_{merge}	0.09	Depositor
R_{sym}	(Not available)	Depositor
$\langle I/\sigma(I) \rangle$ ¹	3.41 (at 1.95Å)	Xtrriage
Refinement program	REFMAC 5.5.0088	Depositor
R, R_{free}	0.155 , 0.196 0.155 , 0.194	Depositor DCC
R_{free} test set	787 reflections (5.00%)	wwPDB-VP
Wilson B-factor (Å ²)	12.3	Xtrriage
Anisotropy	0.095	Xtrriage
Bulk solvent k_{sol} (e/Å ³), B_{sol} (Å ²)	0.39 , 59.8	EDS
L-test for twinning ²	$\langle L \rangle = 0.49$, $\langle L^2 \rangle = 0.33$	Xtrriage
Estimated twinning fraction	No twinning to report.	Xtrriage
F_o, F_c correlation	0.95	EDS
Total number of atoms	1689	wwPDB-VP
Average B, all atoms (Å ²)	12.0	wwPDB-VP

Xtrriage's analysis on translational NCS is as follows: *The largest off-origin peak in the Patterson function is 8.12% of the height of the origin peak. No significant pseudotranslation is detected.*

¹Intensities estimated from amplitudes.

²Theoretical values of $\langle |L| \rangle$, $\langle L^2 \rangle$ for acentric reflections are 0.5, 0.333 respectively for untwinned datasets, and 0.375, 0.2 for perfectly twinned datasets.

5 Model quality [i](#)

5.1 Standard geometry [i](#)

Bond lengths and bond angles in the following residue types are not validated in this section: CHL, CL, CD, PID, DGD, NA, K, PEG

The Z score for a bond length (or angle) is the number of standard deviations the observed value is removed from the expected value. A bond length (or angle) with $|Z| > 5$ is considered an outlier worth inspection. RMSZ is the root-mean-square of all Z scores of the bond lengths (or angles).

Mol	Chain	Bond lengths		Bond angles	
		RMSZ	# Z >5	RMSZ	# Z >5
1	M	1.19	4/1169 (0.3%)	0.90	6/1578 (0.4%)

All (4) bond length outliers are listed below:

Mol	Chain	Res	Type	Atoms	Z	Observed(Å)	Ideal(Å)
1	M	83	ALA	CA-CB	6.81	1.66	1.52
1	M	69	ALA	CA-CB	6.00	1.65	1.52
1	M	142	PHE	CE2-CZ	5.85	1.48	1.37
1	M	15	TYR	CD1-CE1	5.29	1.47	1.39

All (6) bond angle outliers are listed below:

Mol	Chain	Res	Type	Atoms	Z	Observed(°)	Ideal(°)
1	M	55	ASP	CB-CG-OD1	8.46	125.91	118.30
1	M	55	ASP	CB-CG-OD2	-5.55	113.30	118.30
1	M	94	ARG	NE-CZ-NH2	-5.39	117.60	120.30
1	M	19	LYS	CD-CE-NZ	-5.23	99.67	111.70
1	M	94	ARG	NE-CZ-NH1	5.21	122.91	120.30
1	M	45	ASP	CB-CG-OD1	5.18	122.97	118.30

There are no chirality outliers.

There are no planarity outliers.

5.2 Too-close contacts [i](#)

In the following table, the Non-H and H(model) columns list the number of non-hydrogen atoms and hydrogen atoms in the chain respectively. The H(added) column lists the number of hydrogen atoms added and optimized by MolProbity. The Clashes column lists the number of clashes within the asymmetric unit, whereas Symm-Clashes lists symmetry-related clashes.

Mol	Chain	Non-H	H(model)	H(added)	Clashes	Symm-Clashes
1	M	1149	0	1151	14	0
2	M	69	0	6	3	0
3	M	189	0	166	2	0
4	M	66	0	96	11	0
5	M	8	0	0	1	0
6	M	3	0	0	1	0
7	M	1	0	0	0	0
8	M	1	0	0	0	0
9	M	7	0	10	1	0
10	M	196	0	0	6	0
All	All	1689	0	1429	26	0

The all-atom clashscore is defined as the number of clashes found per 1000 atoms (including hydrogen atoms). The all-atom clashscore for this structure is 10.

All (26) close contacts within the same asymmetric unit are listed below, sorted by their clash magnitude.

Atom-1	Atom-2	Interatomic distance (Å)	Clash overlap (Å)
9:M:1162:PEG:H21	10:M:2192:HOH:O	1.34	1.21
1:M:68:LYS:HE3	10:M:2119:HOH:O	1.80	0.82
4:M:615:DGD:HBN1	4:M:615:DGD:HAW1	1.65	0.78
1:M:105[B]:MET:SD	10:M:2070:HOH:O	2.43	0.76
1:M:133:GLU:HG2	4:M:615:DGD:O5E	1.86	0.75
1:M:105[B]:MET:CE	10:M:2070:HOH:O	2.36	0.73
4:M:615:DGD:HAW1	4:M:615:DGD:CFB	2.19	0.72
5:M:1154[A]:CD:CD	6:M:1159:CL:CL	1.96	0.71
1:M:137:GLU:OE2	4:M:615:DGD:HE61	1.99	0.62
4:M:615:DGD:HBW2	4:M:615:DGD:HBS1	1.81	0.62
1:M:39:GLU:HG2	1:M:113:LYS:HZ2	1.65	0.61
1:M:111:VAL:HG21	4:M:615:DGD:HBH2	1.83	0.59
4:M:615:DGD:HBN1	4:M:615:DGD:CCA	2.33	0.58
1:M:39:GLU:HG2	1:M:113:LYS:NZ	2.19	0.58
4:M:615:DGD:HBS1	4:M:615:DGD:CCB	2.34	0.57
1:M:68:LYS:NZ	10:M:2104:HOH:O	2.19	0.57
1:M:60:LYS:O	1:M:64[A]:GLU:HG3	2.06	0.55
1:M:32:PRO:HG3	4:M:615:DGD:HA92	1.89	0.53
3:M:611:PID:H11	4:M:615:DGD:O1A	2.13	0.47
1:M:76:PRO:O	10:M:2112:HOH:O	2.21	0.43
3:M:613:PID:H22	4:M:615:DGD:HBS3	2.00	0.43
1:M:35:LEU:HD12	1:M:37:PRO:HD3	2.00	0.42
1:M:113:LYS:HZ2	1:M:113:LYS:HG2	1.76	0.41

There are no symmetry-related clashes.

5.3 Torsion angles [i](#)

5.3.1 Protein backbone [i](#)

In the following table, the Percentiles column shows the percent Ramachandran outliers of the chain as a percentile score with respect to all X-ray entries followed by that with respect to entries of similar resolution.

The Analysed column shows the number of residues for which the backbone conformation was analysed, and the total number of residues.

Mol	Chain	Analysed	Favoured	Allowed	Outliers	Percentiles
1	M	153/151 (101%)	152 (99%)	1 (1%)	0	100 100

There are no Ramachandran outliers to report.

5.3.2 Protein sidechains [i](#)

In the following table, the Percentiles column shows the percent sidechain outliers of the chain as a percentile score with respect to all X-ray entries followed by that with respect to entries of similar resolution.

The Analysed column shows the number of residues for which the sidechain conformation was analysed, and the total number of residues.

Mol	Chain	Analysed	Rotameric	Outliers	Percentiles
1	M	118/114 (104%)	116 (98%)	2 (2%)	60 55

All (2) residues with a non-rotameric sidechain are listed below:

Mol	Chain	Res	Type
1	M	35	LEU
1	M	143	LYS

Sometimes sidechains can be flipped to improve hydrogen bonding and reduce clashes. All (1) such sidechains are listed below:

Mol	Chain	Res	Type
1	M	36	GLN

5.3.3 RNA [i](#)

There are no RNA molecules in this entry.

5.4 Non-standard residues in protein, DNA, RNA chains [i](#)

There are no non-standard protein/DNA/RNA residues in this entry.

5.5 Carbohydrates [i](#)

There are no monosaccharides in this entry.

5.6 Ligand geometry [i](#)

Of 22 ligands modelled in this entry, 13 are monoatomic - leaving 9 for Mogul analysis.

In the following table, the Counts columns list the number of bonds (or angles) for which Mogul statistics could be retrieved, the number of bonds (or angles) that are observed in the model and the number of bonds (or angles) that are defined in the Chemical Component Dictionary. The Link column lists molecule types, if any, to which the group is linked. The Z score for a bond length (or angle) is the number of standard deviations the observed value is removed from the expected value. A bond length (or angle) with $|Z| > 2$ is considered an outlier worth inspection. RMSZ is the root-mean-square of all Z scores of the bond lengths (or angles).

Mol	Type	Chain	Res	Link	Bond lengths			Bond angles		
					Counts	RMSZ	# Z > 2	Counts	RMSZ	# Z > 2
4	DGD	M	615	-	67,67,67	0.94	3 (4%)	81,81,81	1.47	12 (14%)
9	PEG	M	1162	-	6,6,6	0.63	0	5,5,5	0.51	0
3	PID	M	614	-	41,49,49	1.43	7 (17%)	49,76,76	3.64	16 (32%)
3	PID	M	612[B]	-	41,49,49	1.54	8 (19%)	49,76,76	3.94	22 (44%)
2	CHL	M	601[A]	-	66,74,74	1.72	11 (16%)	73,114,114	1.97	21 (28%)
3	PID	M	611	-	41,49,49	1.55	6 (14%)	49,76,76	3.74	20 (40%)
2	CHL	M	601[B]	-	66,74,74	1.74	12 (18%)	73,114,114	1.96	20 (27%)
3	PID	M	613	-	41,49,49	1.31	3 (7%)	49,76,76	4.24	17 (34%)
3	PID	M	612[A]	-	41,49,49	1.55	7 (17%)	49,76,76	3.92	19 (38%)

In the following table, the Chirals column lists the number of chiral outliers, the number of chiral centers analysed, the number of these observed in the model and the number defined in the Chemical Component Dictionary. Similar counts are reported in the Torsion and Rings columns. '-' means no outliers of that kind were identified.

Mol	Type	Chain	Res	Link	Chirals	Torsions	Rings
4	DGD	M	615	-	-	20/55/95/95	0/2/2/2
9	PEG	M	1162	-	-	2/4/4/4	-
3	PID	M	614	-	-	0/24/93/93	0/4/4/4
3	PID	M	612[B]	-	-	0/24/93/93	0/4/4/4
2	CHL	M	601[A]	-	3/3/20/26	3/39/137/137	-
3	PID	M	611	-	-	0/24/93/93	0/4/4/4
2	CHL	M	601[B]	-	3/3/20/26	3/39/137/137	-
3	PID	M	613	-	-	0/24/93/93	0/4/4/4
3	PID	M	612[A]	-	-	0/24/93/93	0/4/4/4

All (57) bond length outliers are listed below:

Mol	Chain	Res	Type	Atoms	Z	Observed(Å)	Ideal(Å)
2	M	601[A]	CHL	CHC-C1C	5.62	1.49	1.35
2	M	601[B]	CHL	CHC-C1C	5.62	1.49	1.35
3	M	612[A]	PID	C13-C12	4.83	1.49	1.36
3	M	612[B]	PID	C13-C12	4.83	1.49	1.36
4	M	615	DGD	O2G-C1B	4.52	1.47	1.34
2	M	601[A]	CHL	CHD-C4C	4.47	1.49	1.39
2	M	601[B]	CHL	CHD-C4C	4.47	1.49	1.39
3	M	613	PID	C13-C12	4.37	1.48	1.36
3	M	611	PID	C13-C12	4.29	1.48	1.36
2	M	601[A]	CHL	C3D-C4D	-4.09	1.34	1.44
2	M	601[B]	CHL	C3D-C4D	-4.09	1.34	1.44
2	M	601[A]	CHL	O2D-CGD	3.99	1.42	1.33
2	M	601[B]	CHL	O2D-CGD	3.99	1.42	1.33
2	M	601[A]	CHL	CHD-C1D	3.76	1.45	1.38
2	M	601[B]	CHL	CHD-C1D	3.76	1.45	1.38
2	M	601[A]	CHL	OBD-CAD	3.73	1.28	1.22
2	M	601[B]	CHL	OBD-CAD	3.73	1.28	1.22
2	M	601[A]	CHL	O2A-CGA	3.72	1.44	1.33
2	M	601[B]	CHL	O2A-CGA	3.72	1.44	1.33
3	M	612[A]	PID	O3-C10	3.70	1.29	1.21
3	M	612[B]	PID	O3-C10	3.70	1.29	1.21
3	M	612[A]	PID	O6-C30	3.69	1.43	1.35
3	M	611	PID	O6-C30	3.57	1.43	1.35
3	M	614	PID	C13-C12	3.50	1.46	1.36
3	M	612[B]	PID	O6-C30	3.48	1.43	1.35
2	M	601[A]	CHL	C1B-CHB	3.13	1.49	1.41
2	M	601[B]	CHL	C1B-CHB	3.13	1.49	1.41
2	M	601[A]	CHL	C4B-NB	3.09	1.38	1.35
2	M	601[B]	CHL	C4B-NB	3.09	1.38	1.35

Continued on next page...

Continued from previous page...

Mol	Chain	Res	Type	Atoms	Z	Observed(Å)	Ideal(Å)
2	M	601[B]	CHL	C3B-C2B	-2.99	1.36	1.40
3	M	611	PID	O3-C10	2.95	1.27	1.21
4	M	615	DGD	O1G-C1A	2.90	1.41	1.33
3	M	614	PID	O6-C30	2.89	1.41	1.35
3	M	611	PID	C25-C24	2.72	1.59	1.54
3	M	613	PID	O6-C30	2.64	1.41	1.35
2	M	601[A]	CHL	CMC-C2C	2.52	1.50	1.45
2	M	601[B]	CHL	CMC-C2C	2.52	1.50	1.45
4	M	615	DGD	O5D-C1E	2.49	1.44	1.40
3	M	611	PID	CM1-C1	2.42	1.55	1.51
3	M	614	PID	CM1-C1	-2.41	1.48	1.51
3	M	613	PID	C18-C17	2.38	1.51	1.44
3	M	614	PID	C2-C1	2.38	1.55	1.52
3	M	612[A]	PID	C13-C14	2.28	1.50	1.45
3	M	612[B]	PID	C13-C14	2.28	1.50	1.45
3	M	612[A]	PID	CM4-C14	2.27	1.55	1.50
3	M	612[B]	PID	CM4-C14	2.27	1.55	1.50
3	M	611	PID	C20-C21	2.24	1.38	1.35
3	M	612[A]	PID	CM1-C1	2.21	1.55	1.51
3	M	612[B]	PID	CM1-C1	2.21	1.55	1.51
3	M	614	PID	C20-C21	2.19	1.38	1.35
2	M	601[A]	CHL	C4B-CHC	2.16	1.47	1.41
2	M	601[B]	CHL	C4B-CHC	2.16	1.47	1.41
3	M	614	PID	C23-C22	-2.15	1.28	1.32
3	M	612[A]	PID	C23-C22	-2.10	1.28	1.32
3	M	612[B]	PID	C23-C22	-2.10	1.28	1.32
3	M	614	PID	C19-C20	2.09	1.49	1.43
3	M	612[B]	PID	C26-C27	2.06	1.55	1.51

All (147) bond angle outliers are listed below:

Mol	Chain	Res	Type	Atoms	Z	Observed(°)	Ideal(°)
3	M	613	PID	O4-C12-C11	19.17	118.98	107.36
3	M	614	PID	O4-C12-C11	17.23	117.81	107.36
3	M	612[A]	PID	O4-C12-C11	16.62	117.43	107.36
3	M	612[B]	PID	O4-C12-C11	16.62	117.43	107.36
3	M	611	PID	O4-C12-C11	15.78	116.93	107.36
3	M	613	PID	C12-O4-C10	-14.98	99.86	107.65
3	M	612[A]	PID	O1-C1-CM1	13.29	130.99	115.06
3	M	612[B]	PID	O1-C1-CM1	13.29	130.99	115.06
3	M	614	PID	C12-O4-C10	-12.38	101.21	107.65
3	M	611	PID	C12-O4-C10	-11.13	101.86	107.65

Continued on next page...

Continued from previous page...

Mol	Chain	Res	Type	Atoms	Z	Observed(°)	Ideal(°)
3	M	611	PID	O1-C1-C2	8.29	119.61	113.38
3	M	612[A]	PID	C12-O4-C10	-7.94	103.52	107.65
3	M	612[B]	PID	C12-O4-C10	-7.94	103.52	107.65
3	M	612[A]	PID	CM1-C1-C6	-7.19	110.20	122.26
3	M	612[B]	PID	CM1-C1-C6	-7.19	110.20	122.26
3	M	611	PID	O1-C1-CM1	7.03	123.47	115.06
3	M	613	PID	O4-C10-C9	6.41	113.41	108.04
3	M	613	PID	O1-C1-C2	6.32	118.13	113.38
3	M	613	PID	C6-C7-C8	-6.22	112.85	125.99
3	M	613	PID	O3-C10-C9	-5.54	124.44	130.74
2	M	601[A]	CHL	O2D-CGD-CBD	4.95	120.07	111.27
2	M	601[B]	CHL	O2D-CGD-CBD	4.95	120.07	111.27
3	M	614	PID	CM1-C1-C2	4.82	119.70	114.28
3	M	614	PID	O4-C10-C9	4.74	112.00	108.04
3	M	612[A]	PID	C17-C16-C15	-4.67	113.90	123.47
3	M	612[B]	PID	C17-C16-C15	-4.67	113.90	123.47
3	M	612[B]	PID	O6-C27-C28	-4.57	96.20	107.59
2	M	601[A]	CHL	CHD-C1D-ND	-4.51	120.31	124.45
2	M	601[B]	CHL	CHD-C1D-ND	-4.51	120.31	124.45
2	M	601[A]	CHL	C2D-C1D-ND	4.47	113.39	110.10
2	M	601[B]	CHL	C2D-C1D-ND	4.47	113.39	110.10
2	M	601[A]	CHL	C4-C3-C5	4.44	122.74	115.27
2	M	601[B]	CHL	C4-C3-C5	4.44	122.74	115.27
3	M	611	PID	O4-C10-C9	4.34	111.67	108.04
3	M	612[A]	PID	O6-C30-C31	4.30	119.00	111.09
2	M	601[A]	CHL	C2C-C3C-C4C	-4.30	103.42	106.49
2	M	601[B]	CHL	C2C-C3C-C4C	-4.30	103.42	106.49
4	M	615	DGD	O1G-C1A-O1A	-4.25	112.86	123.59
3	M	614	PID	CM1-C1-C6	-4.25	115.14	122.26
3	M	611	PID	C18-C17-C16	-4.19	115.49	124.81
3	M	611	PID	C6-C7-C8	-4.16	117.19	125.99
2	M	601[A]	CHL	CMD-C2D-C1D	4.14	132.01	124.71
2	M	601[B]	CHL	CMD-C2D-C1D	4.14	132.01	124.71
3	M	611	PID	O6-C30-C31	4.04	118.52	111.09
3	M	614	PID	O3-C10-C9	-4.01	126.17	130.74
2	M	601[A]	CHL	C3C-C4C-NC	3.85	114.89	110.57
2	M	601[B]	CHL	C3C-C4C-NC	3.85	114.89	110.57
2	M	601[A]	CHL	O2D-CGD-O1D	-3.77	116.47	123.84
2	M	601[B]	CHL	O2D-CGD-O1D	-3.77	116.47	123.84
3	M	613	PID	O6-C30-C31	3.74	117.96	111.09
3	M	613	PID	CM7-C25-C24	3.73	113.81	110.47
4	M	615	DGD	O6E-C5E-C6E	3.66	115.54	106.44

Continued on next page...

Continued from previous page...

Mol	Chain	Res	Type	Atoms	Z	Observed(°)	Ideal(°)
3	M	613	PID	O5-C29-CM8	-3.55	103.07	109.39
3	M	614	PID	O1-C1-C2	3.53	116.03	113.38
2	M	601[A]	CHL	OMC-CMC-C2C	-3.44	117.91	125.69
2	M	601[B]	CHL	OMC-CMC-C2C	-3.44	117.91	125.69
2	M	601[A]	CHL	C1B-CHB-C4A	-3.43	123.33	130.12
2	M	601[B]	CHL	C1B-CHB-C4A	-3.43	123.33	130.12
3	M	611	PID	CM1-C1-C2	-3.42	110.44	114.28
2	M	601[A]	CHL	C1D-ND-C4D	-3.41	103.91	106.33
2	M	601[B]	CHL	C1D-ND-C4D	-3.41	103.91	106.33
3	M	612[A]	PID	O1-C1-C2	-3.41	110.82	113.38
3	M	612[B]	PID	O1-C1-C2	-3.41	110.82	113.38
3	M	614	PID	C18-C17-C16	-3.41	117.23	124.81
3	M	612[A]	PID	O6-C30-O7	-3.40	116.21	122.96
2	M	601[A]	CHL	C3D-C2D-C1D	-3.33	101.29	105.83
2	M	601[B]	CHL	C3D-C2D-C1D	-3.33	101.29	105.83
3	M	611	PID	C11-C12-C13	-3.33	120.97	128.34
4	M	615	DGD	CAB-C9B-C8B	-3.31	97.60	114.42
3	M	612[A]	PID	O1-C1-C6	-3.24	56.28	58.96
3	M	612[B]	PID	O1-C1-C6	-3.24	56.28	58.96
3	M	614	PID	O6-C30-O7	-3.19	116.62	122.96
3	M	613	PID	C27-O6-C30	3.19	123.84	117.90
3	M	613	PID	C11-C12-C13	-3.16	121.34	128.34
3	M	613	PID	CM1-C1-C6	-3.15	116.98	122.26
3	M	614	PID	C11-C12-C13	-3.14	121.39	128.34
3	M	612[A]	PID	O3-C10-C9	-3.14	127.17	130.74
3	M	612[B]	PID	O3-C10-C9	-3.14	127.17	130.74
4	M	615	DGD	O3G-C3G-C2G	-3.02	103.60	110.90
3	M	614	PID	C8-C9-C11	-3.01	121.59	127.37
3	M	612[A]	PID	C8-C9-C11	-2.99	121.62	127.37
3	M	612[B]	PID	C8-C9-C11	-2.99	121.62	127.37
3	M	612[A]	PID	CM6-C25-C24	2.98	113.14	110.47
3	M	612[B]	PID	CM6-C25-C24	2.98	113.14	110.47
3	M	614	PID	O6-C30-C31	2.97	116.56	111.09
3	M	612[A]	PID	C19-C20-C21	-2.95	123.09	127.31
3	M	612[B]	PID	C19-C20-C21	-2.95	123.09	127.31
3	M	613	PID	O6-C30-O7	-2.94	117.11	122.96
2	M	601[A]	CHL	CHB-C4A-NA	2.94	128.57	124.51
2	M	601[B]	CHL	CHB-C4A-NA	2.94	128.57	124.51
3	M	612[A]	PID	O2-C3-C2	-2.91	104.02	109.80
3	M	612[B]	PID	O2-C3-C2	-2.91	104.02	109.80
3	M	611	PID	C8-C9-C11	-2.91	121.78	127.37
3	M	613	PID	CM1-C1-C2	2.88	117.52	114.28

Continued on next page...

Continued from previous page...

Mol	Chain	Res	Type	Atoms	Z	Observed(°)	Ideal(°)
4	M	615	DGD	O6D-C1D-C2D	2.86	116.40	110.35
3	M	611	PID	O6-C30-O7	-2.85	117.31	122.96
3	M	611	PID	O3-C10-C9	-2.84	127.51	130.74
3	M	611	PID	C17-C18-C19	-2.79	118.59	124.81
4	M	615	DGD	O6D-C5D-C6D	2.74	112.19	106.67
3	M	612[B]	PID	C27-O6-C30	-2.72	112.83	117.90
3	M	613	PID	C19-C20-C21	-2.66	123.51	127.31
4	M	615	DGD	O1G-C1A-C2A	2.62	120.13	111.91
3	M	611	PID	CM6-C25-C24	2.61	112.81	110.47
3	M	612[B]	PID	O6-C27-C26	2.61	114.08	107.59
3	M	614	PID	C18-C19-C20	-2.59	118.17	123.47
3	M	612[A]	PID	CM7-C25-C24	2.56	112.76	110.47
3	M	612[B]	PID	CM7-C25-C24	2.56	112.76	110.47
4	M	615	DGD	C3B-C2B-C1B	-2.56	104.32	113.62
4	M	615	DGD	O5D-C1E-C2E	-2.55	104.32	108.30
3	M	611	PID	O1-C1-C6	-2.53	56.87	58.96
2	M	601[A]	CHL	CAC-C3C-C4C	2.52	128.08	124.81
2	M	601[B]	CHL	CAC-C3C-C4C	2.52	128.08	124.81
3	M	614	PID	CM7-C25-C24	2.50	112.71	110.47
3	M	612[A]	PID	C29-C24-C25	-2.50	117.22	119.70
3	M	612[B]	PID	C29-C24-C25	-2.50	117.22	119.70
2	M	601[A]	CHL	C4D-C3D-CAD	-2.49	105.17	108.10
2	M	601[B]	CHL	C4D-C3D-CAD	-2.49	105.17	108.10
3	M	613	PID	O1-C1-C6	-2.45	56.93	58.96
2	M	601[A]	CHL	C4A-NA-C1A	2.45	107.81	106.71
2	M	601[B]	CHL	C4A-NA-C1A	2.45	107.81	106.71
3	M	614	PID	CM3-C5-CM2	-2.43	103.78	107.37
3	M	612[A]	PID	C6-C7-C8	-2.38	120.97	125.99
3	M	612[B]	PID	C6-C7-C8	-2.38	120.97	125.99
4	M	615	DGD	O3G-C1D-C2D	2.37	112.01	108.30
3	M	614	PID	CM6-C25-C24	2.33	112.56	110.47
2	M	601[A]	CHL	C3B-C4B-NB	2.32	112.21	109.21
2	M	601[A]	CHL	CHD-C4C-C3C	-2.32	121.43	124.84
2	M	601[B]	CHL	CHD-C4C-C3C	-2.32	121.43	124.84
3	M	611	PID	C1-C2-C3	-2.32	108.17	112.75
3	M	611	PID	CM3-C5-C6	-2.31	103.80	110.05
2	M	601[A]	CHL	C1-O2A-CGA	2.31	122.50	116.44
2	M	601[B]	CHL	C1-O2A-CGA	2.31	122.50	116.44
3	M	612[A]	PID	C11-C12-C13	-2.30	123.25	128.34
3	M	612[B]	PID	C11-C12-C13	-2.30	123.25	128.34
3	M	612[B]	PID	O6-C30-O7	-2.29	118.41	122.96
3	M	612[A]	PID	CM3-C5-CM2	2.26	110.70	107.37

Continued on next page...

Continued from previous page...

Mol	Chain	Res	Type	Atoms	Z	Observed(°)	Ideal(°)
3	M	612[B]	PID	CM3-C5-CM2	2.26	110.70	107.37
3	M	612[B]	PID	O6-C30-C31	2.23	115.19	111.09
4	M	615	DGD	CCB-CBB-CAB	-2.22	103.16	114.42
2	M	601[A]	CHL	C4-C3-C2	-2.18	118.08	123.68
2	M	601[B]	CHL	C4-C3-C2	-2.18	118.08	123.68
3	M	611	PID	C26-C25-C24	2.14	111.29	109.21
3	M	611	PID	C18-C19-C20	-2.14	119.09	123.47
2	M	601[A]	CHL	C7-C6-C5	-2.03	107.83	113.36
2	M	601[B]	CHL	C7-C6-C5	-2.03	107.83	113.36
4	M	615	DGD	C9B-C8B-C7B	-2.02	104.14	114.42
3	M	613	PID	CM2-C5-C4	-2.00	105.51	108.98

All (6) chirality outliers are listed below:

Mol	Chain	Res	Type	Atom
2	M	601[A]	CHL	ND
2	M	601[A]	CHL	NA
2	M	601[A]	CHL	NC
2	M	601[B]	CHL	ND
2	M	601[B]	CHL	NA
2	M	601[B]	CHL	NC

All (28) torsion outliers are listed below:

Mol	Chain	Res	Type	Atoms
2	M	601[A]	CHL	C1C-C2C-CMC-OMC
2	M	601[B]	CHL	C1C-C2C-CMC-OMC
4	M	615	DGD	O6E-C5E-C6E-O5E
4	M	615	DGD	C4E-C5E-C6E-O5E
4	M	615	DGD	CBA-CCA-CDA-CEA
4	M	615	DGD	CDB-CEB-CFB-CGB
4	M	615	DGD	C5A-C6A-C7A-C8A
4	M	615	DGD	C2A-C3A-C4A-C5A
4	M	615	DGD	CAB-CBB-CCB-CDB
4	M	615	DGD	C8A-C9A-CAA-CBA
4	M	615	DGD	C1A-C2A-C3A-C4A
4	M	615	DGD	C6B-C7B-C8B-C9B
4	M	615	DGD	CCB-CDB-CEB-CFB
4	M	615	DGD	C8B-C9B-CAB-CBB
4	M	615	DGD	C3B-C4B-C5B-C6B
4	M	615	DGD	C9B-CAB-CBB-CCB
9	M	1162	PEG	O1-C1-C2-O2

Continued on next page...

Continued from previous page...

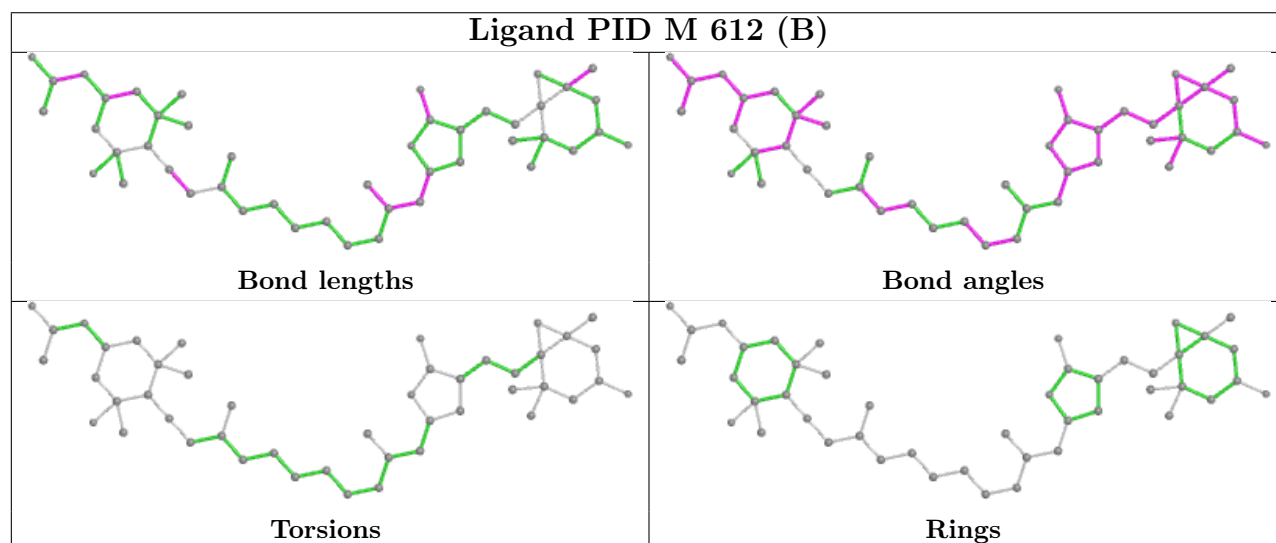
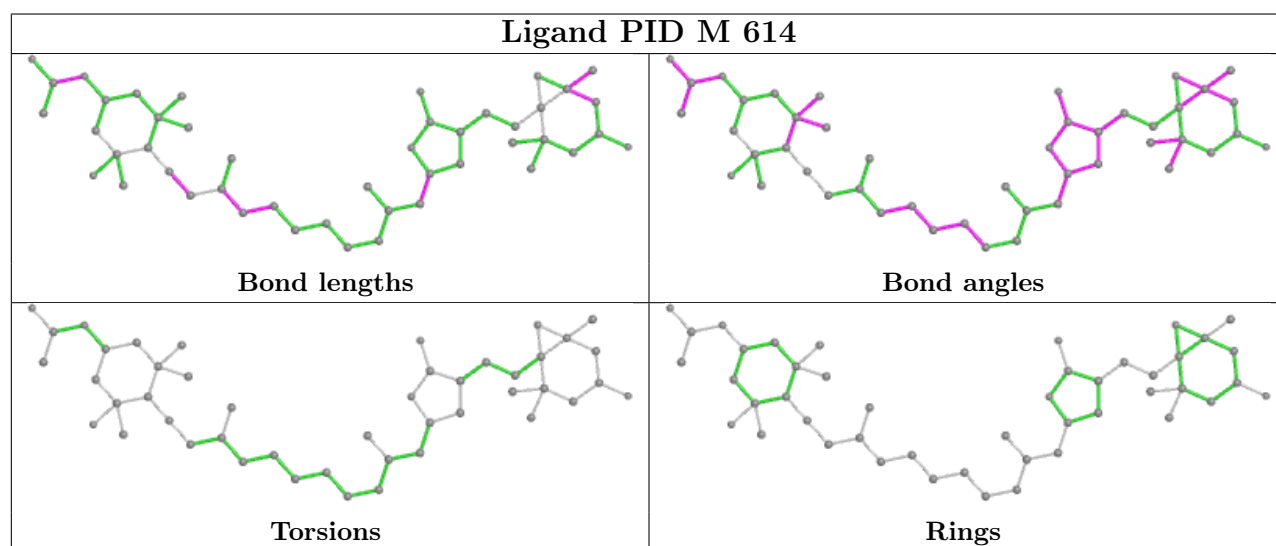
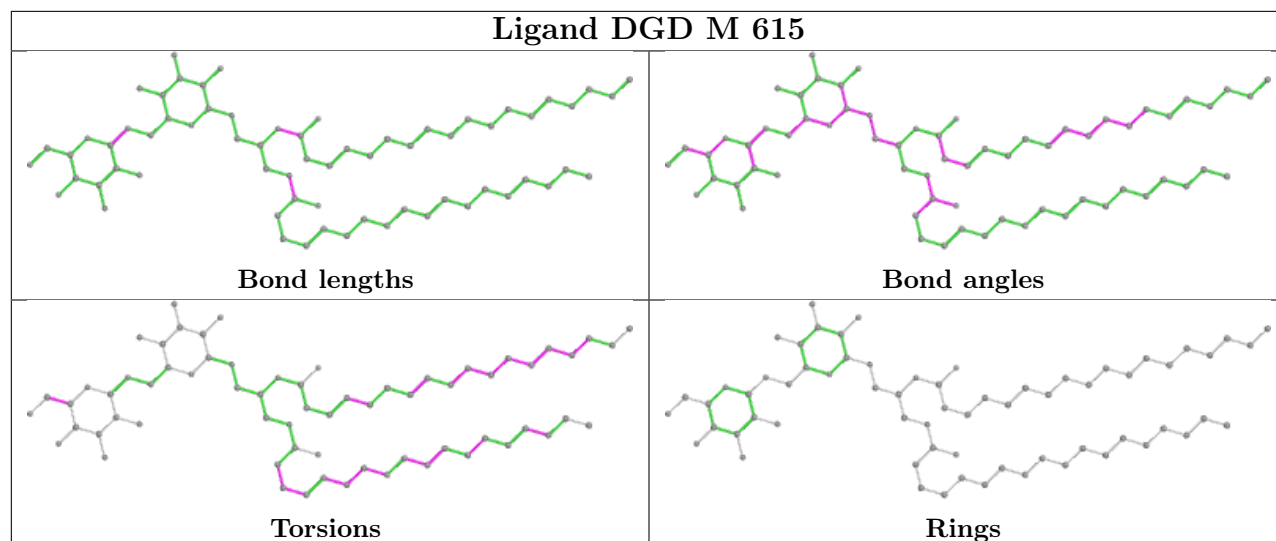
Mol	Chain	Res	Type	Atoms
4	M	615	DGD	C6A-C7A-C8A-C9A
2	M	601[A]	CHL	C3C-C2C-CMC-OMC
2	M	601[B]	CHL	C3C-C2C-CMC-OMC
4	M	615	DGD	CBB-CCB-CDB-CEB
4	M	615	DGD	CEB-CFB-CGB-CHB
4	M	615	DGD	C9A-CAA-CBA-CCA
2	M	601[A]	CHL	CAD-CBD-CGD-O2D
2	M	601[B]	CHL	CAD-CBD-CGD-O2D
4	M	615	DGD	CEA-CFA-CGA-CHA
9	M	1162	PEG	C1-C2-O2-C3
4	M	615	DGD	C4A-C5A-C6A-C7A

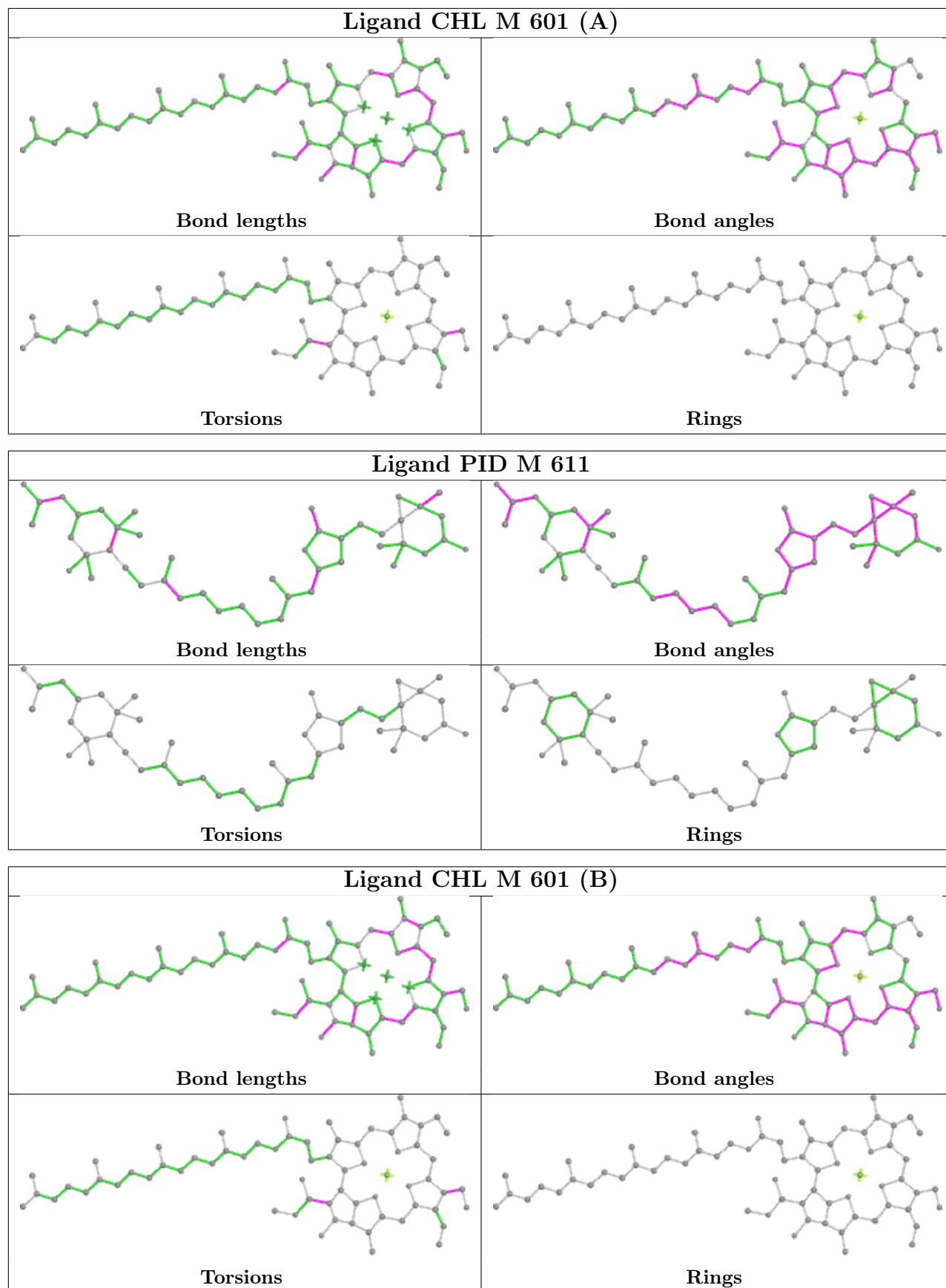
There are no ring outliers.

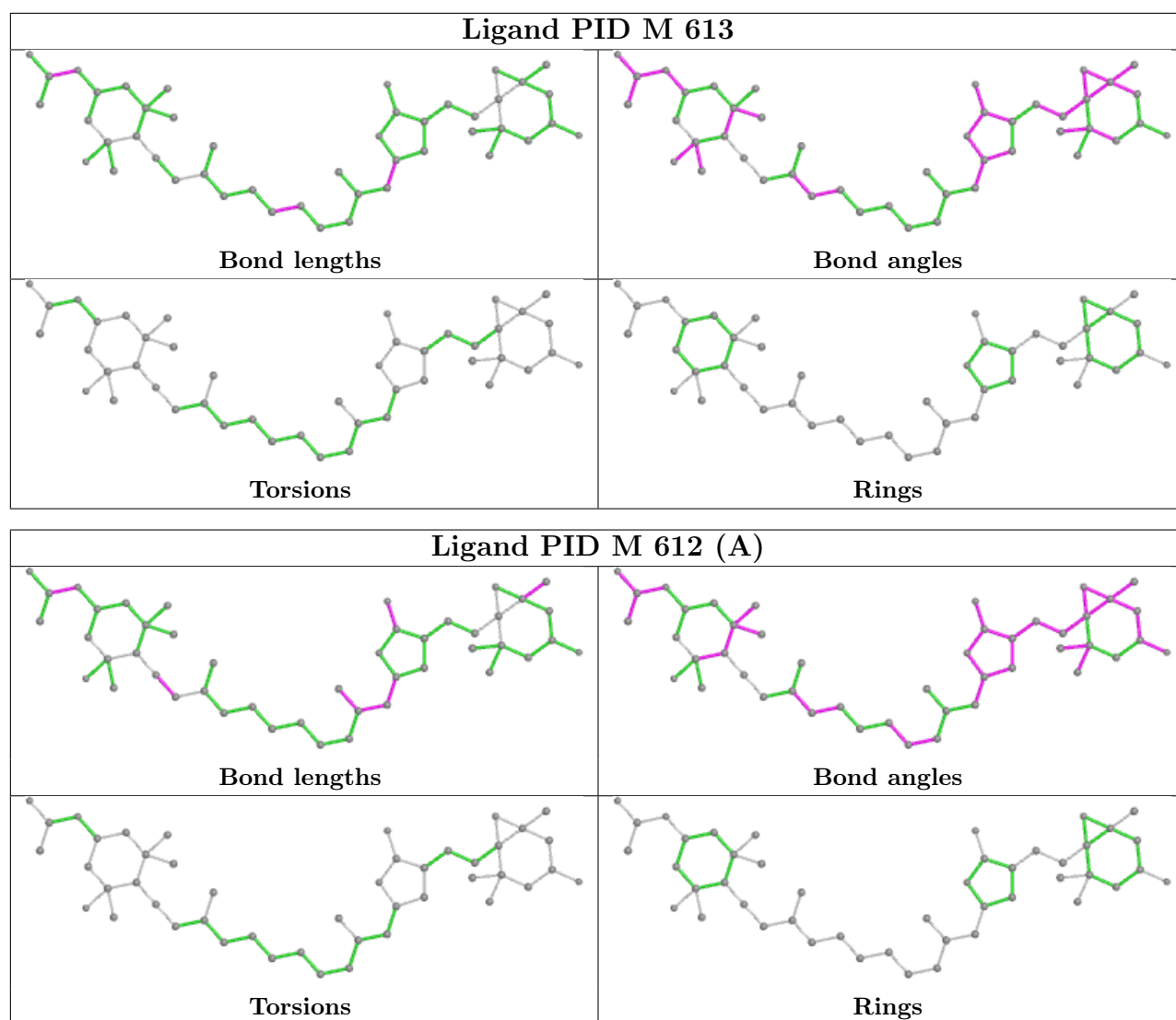
6 monomers are involved in 15 short contacts:

Mol	Chain	Res	Type	Clashes	Symm-Clashes
4	M	615	DGD	11	0
9	M	1162	PEG	1	0
2	M	601[A]	CHL	1	0
3	M	611	PID	1	0
2	M	601[B]	CHL	2	0
3	M	613	PID	1	0

The following is a two-dimensional graphical depiction of Mogul quality analysis of bond lengths, bond angles, torsion angles, and ring geometry for all instances of the Ligand of Interest. In addition, ligands with molecular weight > 250 and outliers as shown on the validation Tables will also be included. For torsion angles, if less than 5% of the Mogul distribution of torsion angles is within 10 degrees of the torsion angle in question, then that torsion angle is considered an outlier. Any bond that is central to one or more torsion angles identified as an outlier by Mogul will be highlighted in the graph. For rings, the root-mean-square deviation (RMSD) between the ring in question and similar rings identified by Mogul is calculated over all ring torsion angles. If the average RMSD is greater than 60 degrees and the minimal RMSD between the ring in question and any Mogul-identified rings is also greater than 60 degrees, then that ring is considered an outlier. The outliers are highlighted in purple. The color gray indicates Mogul did not find sufficient equivalents in the CSD to analyse the geometry.







5.7 Other polymers [i](#)

There are no such residues in this entry.

5.8 Polymer linkage issues [i](#)

There are no chain breaks in this entry.

6 Fit of model and data [i](#)

6.1 Protein, DNA and RNA chains [i](#)

In the following table, the column labelled '#RSRZ > 2' contains the number (and percentage) of RSRZ outliers, followed by percent RSRZ outliers for the chain as percentile scores relative to all X-ray entries and entries of similar resolution. The OWAB column contains the minimum, median, 95th percentile and maximum values of the occupancy-weighted average B-factor per residue. The column labelled 'Q < 0.9' lists the number of (and percentage) of residues with an average occupancy less than 0.9.

Mol	Chain	Analysed	<RSRZ>	#RSRZ>2	OWAB(Å ²)	Q<0.9
1	M	151/151 (100%)	-0.48	1 (0%) 87 92	4, 9, 20, 27	0

All (1) RSRZ outliers are listed below:

Mol	Chain	Res	Type	RSRZ
1	M	150	GLN	2.4

6.2 Non-standard residues in protein, DNA, RNA chains [i](#)

There are no non-standard protein/DNA/RNA residues in this entry.

6.3 Carbohydrates [i](#)

There are no monosaccharides in this entry.

6.4 Ligands [i](#)

In the following table, the Atoms column lists the number of modelled atoms in the group and the number defined in the chemical component dictionary. The B-factors column lists the minimum, median, 95th percentile and maximum values of B factors of atoms in the group. The column labelled 'Q < 0.9' lists the number of atoms with occupancy less than 0.9.

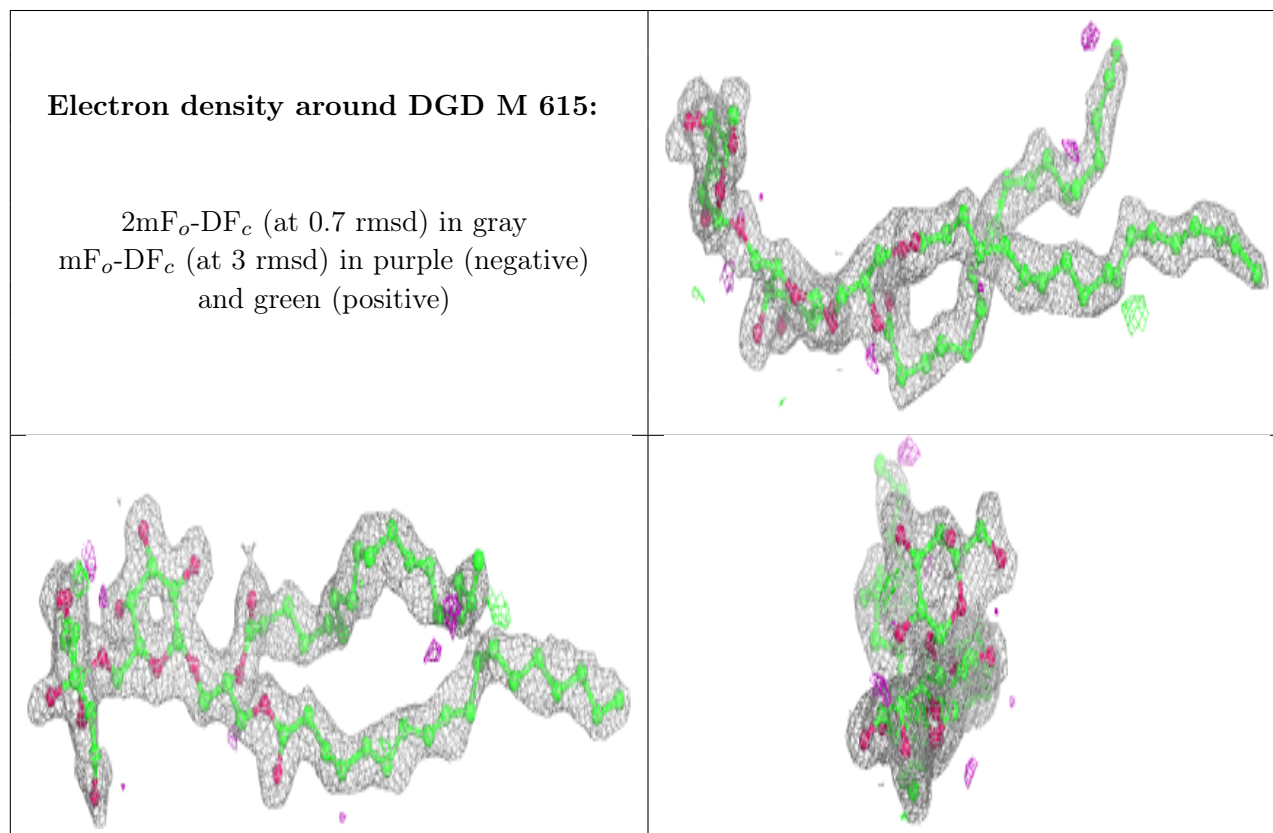
Mol	Type	Chain	Res	Atoms	RSCC	RSR	B-factors(Å ²)	Q<0.9
9	PEG	M	1162	7/7	0.68	0.17	42,44,44,45	0
8	NA	M	1161	1/1	0.81	0.15	27,27,27,27	0
4	DGD	M	615	66/66	0.92	0.14	15,27,37,44	0
6	CL	M	1158	1/1	0.93	0.07	34,34,34,34	0
3	PID	M	612[B]	46/46	0.93	0.12	5,9,30,38	5
3	PID	M	612[A]	46/46	0.93	0.12	5,9,30,38	5

Continued on next page...

Continued from previous page...

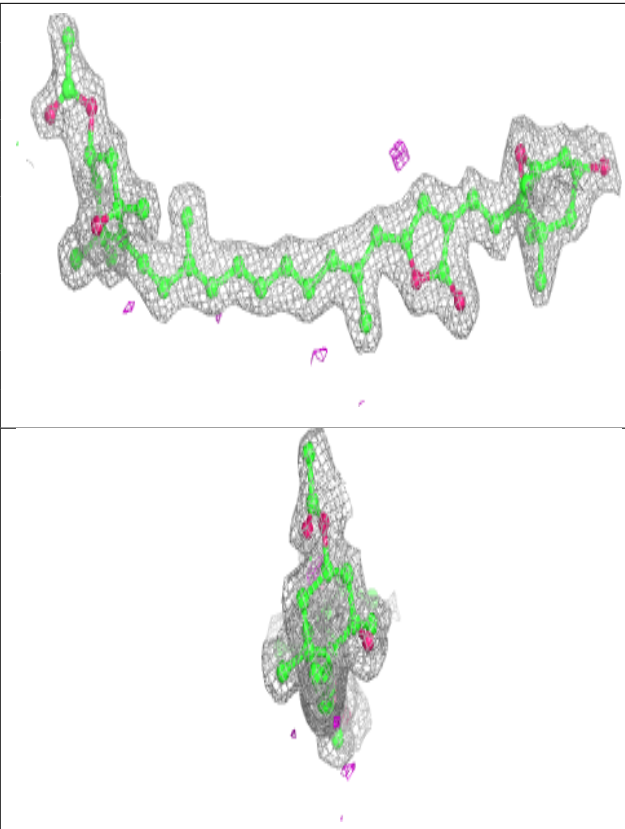
Mol	Type	Chain	Res	Atoms	RSCC	RSR	B-factors(\AA^2)	Q<0.9
7	K	M	1160	1/1	0.95	0.07	38,38,38,38	0
3	PID	M	613	46/46	0.96	0.11	4,8,14,23	0
3	PID	M	611	46/46	0.96	0.09	2,7,13,22	0
3	PID	M	614	46/46	0.98	0.09	2,6,9,14	0
2	CHL	M	601[A]	66/66	0.98	0.10	2,6,12,13	3
2	CHL	M	601[B]	66/66	0.98	0.10	2,6,12,13	3
6	CL	M	1159	1/1	0.99	0.08	8,8,8,8	1
5	CD	M	1155	1/1	0.99	0.05	16,16,16,16	1
5	CD	M	1156	1/1	0.99	0.04	32,32,32,32	1
5	CD	M	1153	1/1	0.99	0.07	14,14,14,14	1
6	CL	M	1157	1/1	1.00	0.06	9,9,9,9	0
5	CD	M	1151[A]	1/1	1.00	0.05	13,13,13,13	1
5	CD	M	1154[A]	1/1	1.00	0.06	6,6,6,6	1
5	CD	M	1154[B]	1/1	1.00	0.06	10,10,10,10	1
5	CD	M	1151[B]	1/1	1.00	0.05	19,19,19,19	1
5	CD	M	1152	1/1	1.00	0.05	9,9,9,9	0

The following is a graphical depiction of the model fit to experimental electron density of all instances of the Ligand of Interest. In addition, ligands with molecular weight > 250 and outliers as shown on the geometry validation Tables will also be included. Each fit is shown from different orientation to approximate a three-dimensional view.

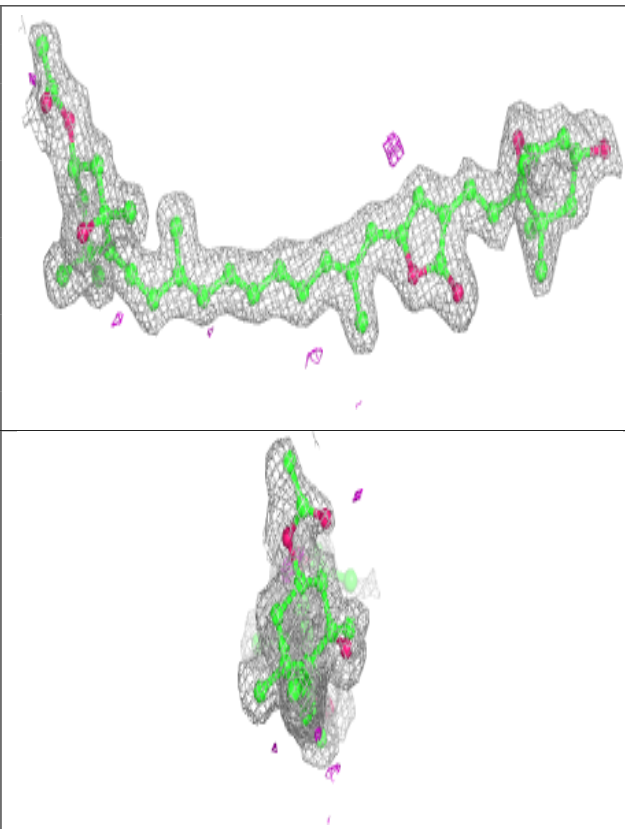


Electron density around PID M 612 (B):

$2mF_o-DF_c$ (at 0.7 rmsd) in gray
 mF_o-DF_c (at 3 rmsd) in purple (negative)
and green (positive)

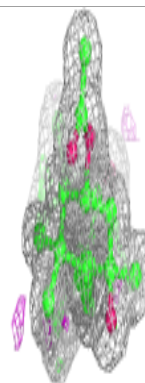
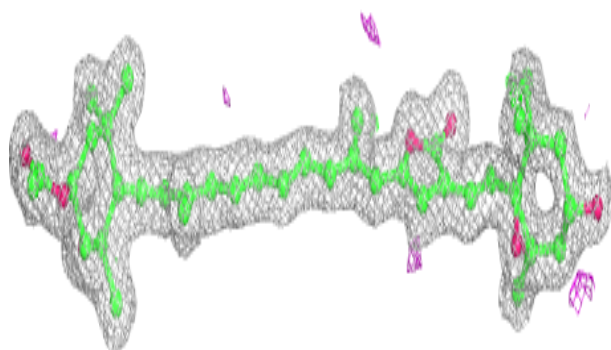
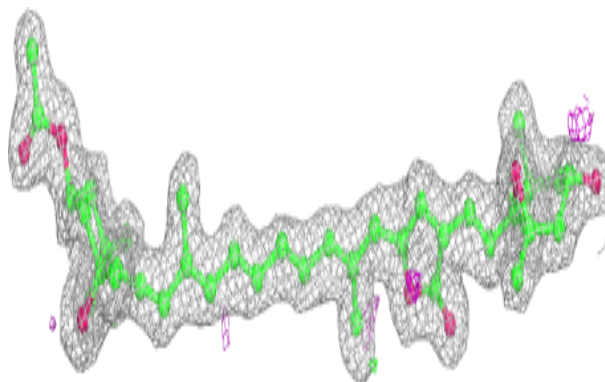
**Electron density around PID M 612 (A):**

$2mF_o-DF_c$ (at 0.7 rmsd) in gray
 mF_o-DF_c (at 3 rmsd) in purple (negative)
and green (positive)

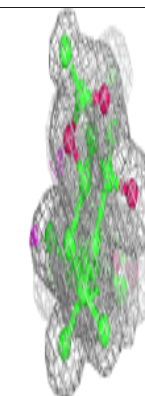
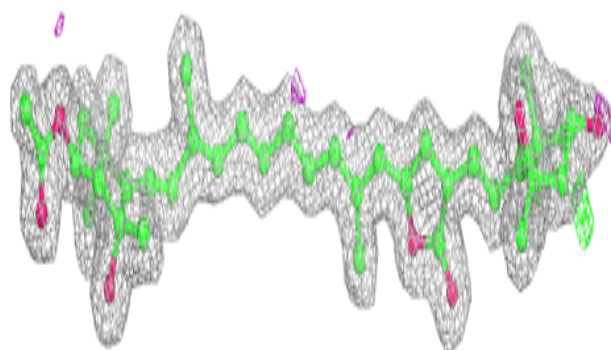
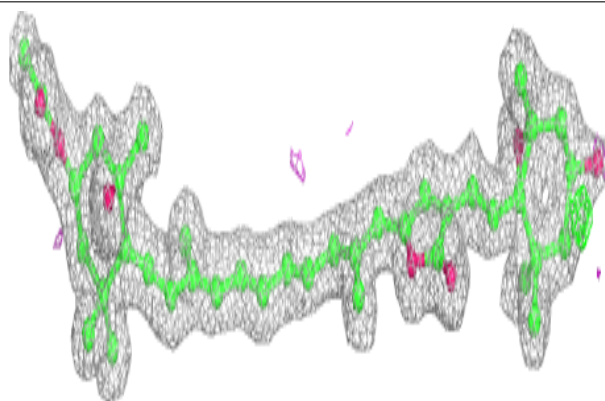


Electron density around PID M 613:

$2mF_o-DF_c$ (at 0.7 rmsd) in gray
 mF_o-DF_c (at 3 rmsd) in purple (negative)
and green (positive)

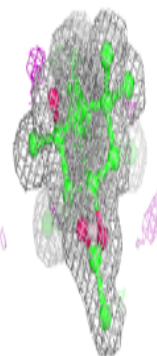
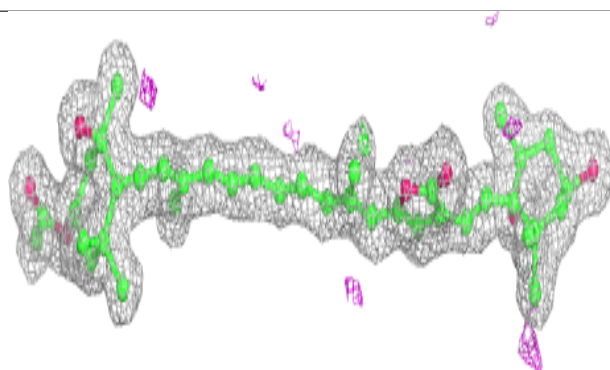
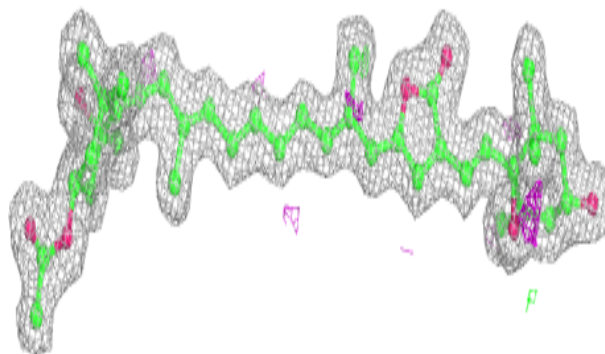
**Electron density around PID M 611:**

$2mF_o-DF_c$ (at 0.7 rmsd) in gray
 mF_o-DF_c (at 3 rmsd) in purple (negative)
and green (positive)

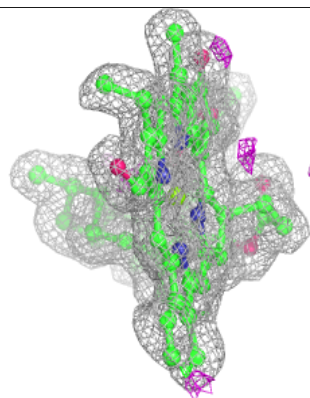
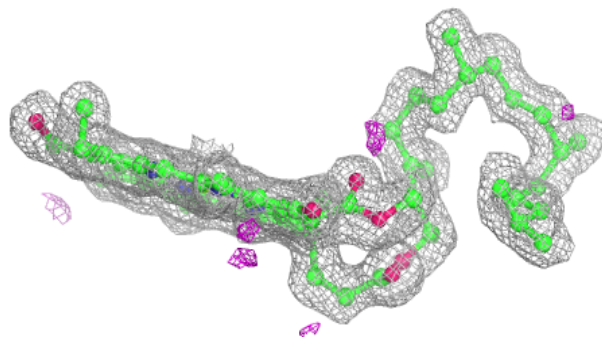
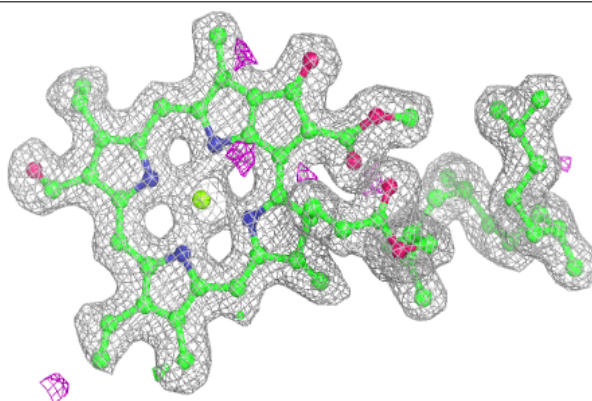


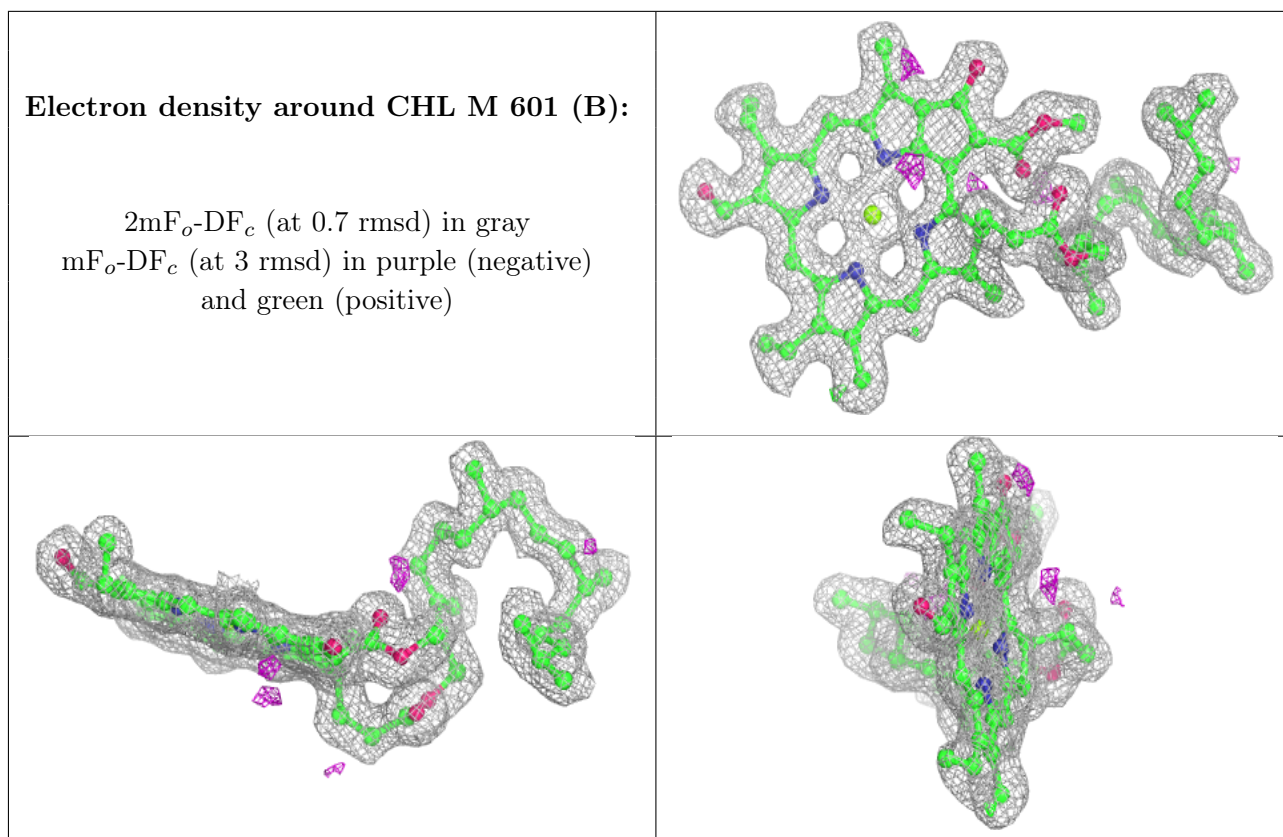
Electron density around PID M 614:

$2mF_o-DF_c$ (at 0.7 rmsd) in gray
 mF_o-DF_c (at 3 rmsd) in purple (negative)
and green (positive)

**Electron density around CHL M 601 (A):**

$2mF_o-DF_c$ (at 0.7 rmsd) in gray
 mF_o-DF_c (at 3 rmsd) in purple (negative)
and green (positive)





6.5 Other polymers [i](#)

There are no such residues in this entry.