



Full wwPDB X-ray Structure Validation Report ⓘ

Nov 22, 2023 – 06:27 PM JST

PDB ID : 7WYF
Title : Plasmodium falciparum dihydroorotate dehydrogenase (DHODH) in complex with its inhibitor 50
Authors : Zhu, L.; Li, H.
Deposited on : 2022-02-16
Resolution : 3.30 Å(reported)

This is a Full wwPDB X-ray Structure Validation Report for a publicly released PDB entry.

We welcome your comments at validation@mail.wwpdb.org

A user guide is available at

<https://www.wwpdb.org/validation/2017/XrayValidationReportHelp>

with specific help available everywhere you see the ⓘ symbol.

The types of validation reports are described at

<http://www.wwpdb.org/validation/2017/FAQs#types>.

The following versions of software and data (see [references ⓘ](#)) were used in the production of this report:

MolProbity : 4.02b-467
Mogul : 1.8.5 (274361), CSD as541be (2020)
Xtriage (Phenix) : 1.13
EDS : 2.36
buster-report : 1.1.7 (2018)
Percentile statistics : 20191225.v01 (using entries in the PDB archive December 25th 2019)
Refmac : 5.8.0158
CCP4 : 7.0.044 (Gargrove)
Ideal geometry (proteins) : Engh & Huber (2001)
Ideal geometry (DNA, RNA) : Parkinson et al. (1996)
Validation Pipeline (wwPDB-VP) : 2.36

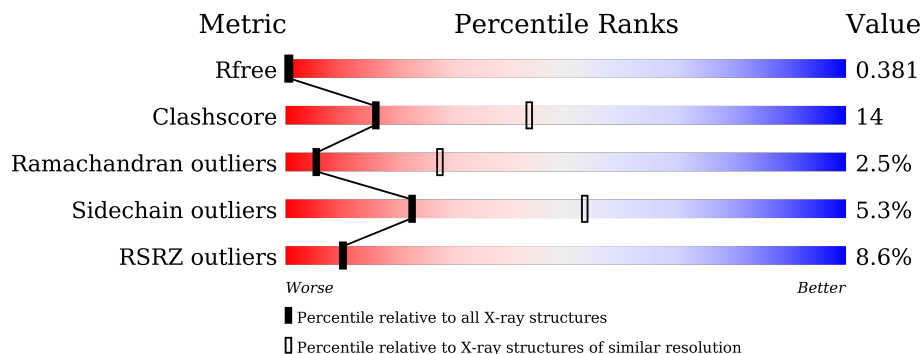
1 Overall quality at a glance

The following experimental techniques were used to determine the structure:

X-RAY DIFFRACTION

The reported resolution of this entry is 3.30 Å.

Percentile scores (ranging between 0-100) for global validation metrics of the entry are shown in the following graphic. The table shows the number of entries on which the scores are based.



Metric	Whole archive (#Entries)	Similar resolution (#Entries, resolution range(Å))
R_{free}	130704	1149 (3.34-3.26)
Clashscore	141614	1205 (3.34-3.26)
Ramachandran outliers	138981	1183 (3.34-3.26)
Sidechain outliers	138945	1182 (3.34-3.26)
RSRZ outliers	127900	1115 (3.34-3.26)

The table below summarises the geometric issues observed across the polymeric chains and their fit to the electron density. The red, orange, yellow and green segments of the lower bar indicate the fraction of residues that contain outliers for ≥ 3 , 2, 1 and 0 types of geometric quality criteria respectively. A grey segment represents the fraction of residues that are not modelled. The numeric value for each fraction is indicated below the corresponding segment, with a dot representing fractions $\leq 5\%$. The upper red bar (where present) indicates the fraction of residues that have poor fit to the electron density. The numeric value is given above the bar.

Mol	Chain	Length	Quality of chain
1	A	431	

2 Entry composition [i](#)

There are 5 unique types of molecules in this entry. The entry contains 2928 atoms, of which 0 are hydrogens and 0 are deuteriums.

In the tables below, the ZeroOcc column contains the number of atoms modelled with zero occupancy, the AltConf column contains the number of residues with at least one atom in alternate conformation and the Trace column contains the number of residues modelled with at most 2 atoms.

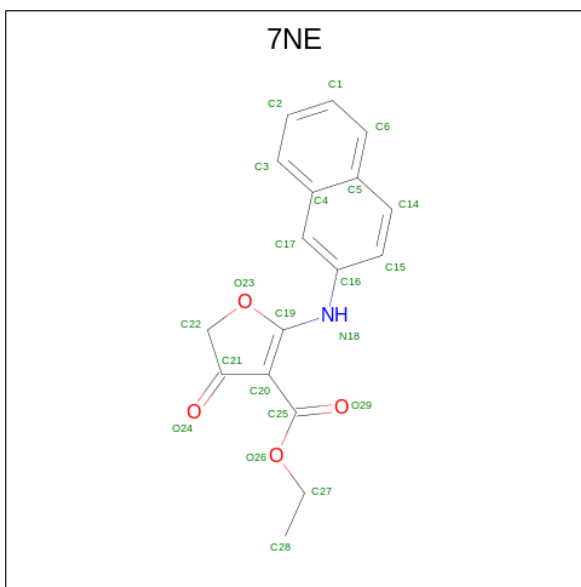
- Molecule 1 is a protein called Dihydroorotate dehydrogenase (quinone), mitochondrial.

Mol	Chain	Residues	Atoms					ZeroOcc	AltConf	Trace
			Total	C	N	O	S			
1	A	361	2862	1835	478	535	14	0	0	0

There are 19 discrepancies between the modelled and reference sequences:

Chain	Residue	Modelled	Actual	Comment	Reference
A	139	MET	-	initiating methionine	UNP Q54A96
A	140	GLY	-	expression tag	UNP Q54A96
A	141	HIS	-	expression tag	UNP Q54A96
A	142	HIS	-	expression tag	UNP Q54A96
A	143	HIS	-	expression tag	UNP Q54A96
A	144	HIS	-	expression tag	UNP Q54A96
A	145	HIS	-	expression tag	UNP Q54A96
A	146	HIS	-	expression tag	UNP Q54A96
A	147	ALA	-	expression tag	UNP Q54A96
A	148	GLU	-	expression tag	UNP Q54A96
A	149	ASN	-	expression tag	UNP Q54A96
A	150	LEU	-	expression tag	UNP Q54A96
A	151	TYR	-	expression tag	UNP Q54A96
A	152	PHE	-	expression tag	UNP Q54A96
A	153	GLN	-	expression tag	UNP Q54A96
A	154	GLY	-	expression tag	UNP Q54A96
A	155	ALA	-	expression tag	UNP Q54A96
A	156	ASP	-	expression tag	UNP Q54A96
A	157	PRO	-	expression tag	UNP Q54A96

- Molecule 2 is FLAVIN MONONUCLEOTIDE (three-letter code: FMN) (formula: C₁₇H₂₁N₄O₉P).



Mol	Chain	Residues	Atoms				ZeroOcc	AltConf
			Total	C	N	O		
4	A	1	22	17	1	4	0	0

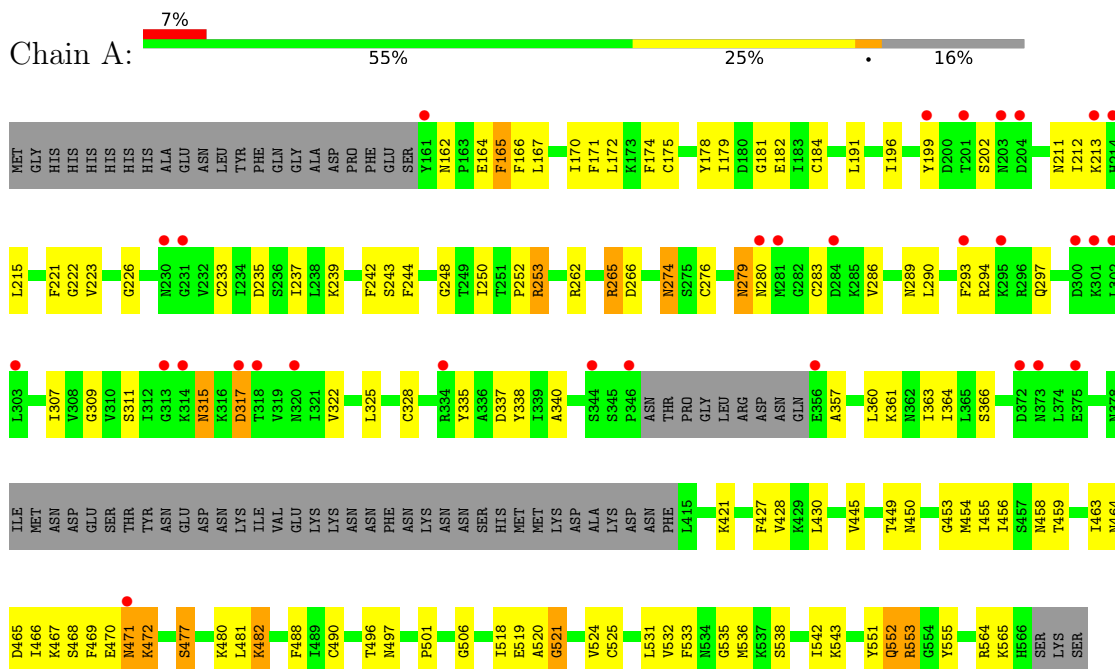
- Molecule 5 is water.

Mol	Chain	Residues	Atoms		ZeroOcc	AltConf
			Total	O		
5	A	2	2	2	0	0

3 Residue-property plots [i](#)

These plots are drawn for all protein, RNA, DNA and oligosaccharide chains in the entry. The first graphic for a chain summarises the proportions of the various outlier classes displayed in the second graphic. The second graphic shows the sequence view annotated by issues in geometry and electron density. Residues are color-coded according to the number of geometric quality criteria for which they contain at least one outlier: green = 0, yellow = 1, orange = 2 and red = 3 or more. A red dot above a residue indicates a poor fit to the electron density ($RSRZ > 2$). Stretches of 2 or more consecutive residues without any outlier are shown as a green connector. Residues present in the sample, but not in the model, are shown in grey.

- Molecule 1: Dihydroorotate dehydrogenase (quinone), mitochondrial



4 Data and refinement statistics

Property	Value	Source
Space group	I 2 2 2	Depositor
Cell constants a, b, c, α , β , γ	57.71Å 71.77Å 179.43Å 90.00° 90.00° 90.00°	Depositor
Resolution (Å)	45.99 – 3.30 45.95 – 3.30	Depositor EDS
% Data completeness (in resolution range)	99.5 (45.99-3.30) 99.5 (45.95-3.30)	Depositor EDS
R_{merge}	(Not available)	Depositor
R_{sym}	(Not available)	Depositor
$\langle I/\sigma(I) \rangle$ ¹	3.04 (at 3.32Å)	Xtrriage
Refinement program	REFMAC 5.8.0258	Depositor
R, R_{free}	0.258 , 0.359 0.265 , 0.381	Depositor DCC
R_{free} test set	295 reflections (5.00%)	wwPDB-VP
Wilson B-factor (Å ²)	67.2	Xtrriage
Anisotropy	0.149	Xtrriage
Bulk solvent k_{sol} (e/Å ³), B_{sol} (Å ²)	0.36 , 63.4	EDS
L-test for twinning ²	$\langle L \rangle = 0.46$, $\langle L^2 \rangle = 0.29$	Xtrriage
Estimated twinning fraction	No twinning to report.	Xtrriage
F_o, F_c correlation	0.86	EDS
Total number of atoms	2928	wwPDB-VP
Average B, all atoms (Å ²)	75.0	wwPDB-VP

Xtrriage's analysis on translational NCS is as follows: *The largest off-origin peak in the Patterson function is 7.03% of the height of the origin peak. No significant pseudotranslation is detected.*

¹Intensities estimated from amplitudes.

²Theoretical values of $\langle |L| \rangle$, $\langle L^2 \rangle$ for acentric reflections are 0.5, 0.333 respectively for untwinned datasets, and 0.375, 0.2 for perfectly twinned datasets.

5 Model quality [i](#)

5.1 Standard geometry [i](#)

Bond lengths and bond angles in the following residue types are not validated in this section: 7NE, FMN, ORO

The Z score for a bond length (or angle) is the number of standard deviations the observed value is removed from the expected value. A bond length (or angle) with $|Z| > 5$ is considered an outlier worth inspection. RMSZ is the root-mean-square of all Z scores of the bond lengths (or angles).

Mol	Chain	Bond lengths		Bond angles	
		RMSZ	# Z >5	RMSZ	# Z >5
1	A	0.70	0/2909	0.83	0/3913

There are no bond length outliers.

There are no bond angle outliers.

There are no chirality outliers.

There are no planarity outliers.

5.2 Too-close contacts [i](#)

In the following table, the Non-H and H(model) columns list the number of non-hydrogen atoms and hydrogen atoms in the chain respectively. The H(added) column lists the number of hydrogen atoms added and optimized by MolProbity. The Clashes column lists the number of clashes within the asymmetric unit, whereas Symm-Clashes lists symmetry-related clashes.

Mol	Chain	Non-H	H(model)	H(added)	Clashes	Symm-Clashes
1	A	2862	0	2914	85	0
2	A	31	0	19	2	0
3	A	11	0	3	1	0
4	A	22	0	0	5	0
5	A	2	0	0	0	0
All	All	2928	0	2936	85	0

The all-atom clashscore is defined as the number of clashes found per 1000 atoms (including hydrogen atoms). The all-atom clashscore for this structure is 14.

All (85) close contacts within the same asymmetric unit are listed below, sorted by their clash magnitude.

Atom-1	Atom-2	Interatomic distance (Å)	Clash overlap (Å)
1:A:455:ILE:HG22	1:A:455:ILE:O	1.67	0.93
1:A:233:CYS:O	1:A:233:CYS:SG	2.40	0.78
1:A:456:ILE:HG23	1:A:488:PHE:CD2	2.20	0.77
1:A:309:GLY:HA3	1:A:338:TYR:CZ	2.21	0.75
1:A:253:ARG:H	1:A:315:ASN:HD21	1.36	0.73
1:A:199:TYR:HA	1:A:239:LYS:O	1.89	0.72
1:A:553:ARG:HG2	1:A:555:TYR:CE2	2.27	0.70
1:A:455:ILE:O	1:A:455:ILE:CG2	2.39	0.68
1:A:427:PHE:HA	1:A:453:GLY:O	1.94	0.68
1:A:179:ILE:O	1:A:265:ARG:NH2	2.25	0.68
1:A:471:ASN:HD22	1:A:471:ASN:N	1.91	0.68
1:A:175:CYS:HB3	1:A:184:CYS:SG	2.35	0.67
1:A:253:ARG:NE	1:A:253:ARG:HA	2.10	0.67
1:A:311:SER:HA	1:A:340:ALA:HB3	1.78	0.65
1:A:223:VAL:HG21	1:A:237:ILE:CG2	2.27	0.65
1:A:294:ARG:NH2	1:A:335:TYR:O	2.30	0.63
1:A:322:VAL:HG13	1:A:366:SER:HB3	1.81	0.62
1:A:363:ILE:O	1:A:366:SER:HB2	2.03	0.59
1:A:226:GLY:HA3	2:A:601:FMN:N5	2.18	0.58
1:A:482:LYS:HA	1:A:506:GLY:O	2.03	0.58
1:A:469:PHE:HA	1:A:472:LYS:HG3	1.85	0.58
1:A:309:GLY:HA3	1:A:338:TYR:CE2	2.39	0.57
1:A:172:LEU:HD21	4:A:603:7NE:C22	2.35	0.56
1:A:309:GLY:HA3	1:A:338:TYR:CE1	2.40	0.56
1:A:518:ILE:O	1:A:521:GLY:N	2.40	0.55
1:A:458:ASN:OD1	1:A:459:THR:N	2.40	0.55
1:A:283:CYS:SG	1:A:328:CYS:HA	2.47	0.54
1:A:307:ILE:HG23	1:A:337:ASP:HB2	1.90	0.54
1:A:490:CYS:SG	1:A:520:ALA:HB1	2.48	0.54
1:A:167:LEU:HA	1:A:170:ILE:HD12	1.89	0.54
1:A:286:VAL:O	1:A:289:ASN:N	2.40	0.53
1:A:325:LEU:O	1:A:328:CYS:HB2	2.08	0.53
1:A:454:MET:HE1	1:A:496:THR:HG21	1.90	0.53
1:A:262:ARG:O	1:A:274:ASN:HA	2.08	0.53
1:A:555:TYR:HE1	1:A:564:ARG:HD3	1.73	0.53
1:A:536:MET:SD	4:A:603:7NE:C2	2.97	0.52
1:A:211:ASN:HA	1:A:215:LEU:O	2.10	0.51
1:A:532:VAL:HG22	4:A:603:7NE:C27	2.41	0.51
1:A:279:ASN:CG	1:A:279:ASN:O	2.49	0.51
1:A:226:GLY:HA3	2:A:601:FMN:C4A	2.42	0.50
1:A:317:ASP:O	1:A:317:ASP:OD1	2.30	0.49
1:A:248:GLY:HA2	1:A:250:ILE:HG23	1.95	0.49

Continued on next page...

Continued from previous page...

Atom-1	Atom-2	Interatomic distance (Å)	Clash overlap (Å)
1:A:317:ASP:O	1:A:317:ASP:CG	2.51	0.49
1:A:471:ASN:N	1:A:471:ASN:ND2	2.60	0.48
1:A:222:GLY:HA2	1:A:244:PHE:O	2.14	0.47
1:A:276:CYS:HB2	3:A:602:ORO:C7	2.44	0.47
1:A:244:PHE:HB2	1:A:307:ILE:O	2.15	0.47
1:A:293:PHE:O	1:A:297:GLN:N	2.45	0.47
1:A:551:TYR:O	1:A:553:ARG:N	2.47	0.47
1:A:357:ALA:O	1:A:360:LEU:HB3	2.14	0.47
1:A:532:VAL:HG22	4:A:603:7NE:O26	2.16	0.47
1:A:215:LEU:HD11	1:A:307:ILE:HD12	1.97	0.46
1:A:253:ARG:N	1:A:315:ASN:HD21	2.10	0.46
1:A:266:ASP:O	1:A:533:PHE:CE1	2.68	0.46
1:A:470:GLU:HG3	1:A:471:ASN:ND2	2.30	0.46
1:A:290:LEU:O	1:A:293:PHE:HB3	2.15	0.46
1:A:555:TYR:CE1	1:A:564:ARG:HD3	2.49	0.46
1:A:223:VAL:HG23	1:A:242:PHE:CD2	2.50	0.46
1:A:428:VAL:HG13	1:A:430:LEU:HD21	1.98	0.45
1:A:294:ARG:NE	1:A:335:TYR:O	2.50	0.44
1:A:265:ARG:NH1	4:A:603:7NE:O24	2.50	0.44
1:A:364:ILE:HG21	1:A:449:THR:HB	1.97	0.44
1:A:162:ASN:HB2	1:A:165:PHE:HD2	1.82	0.44
1:A:171:PHE:O	1:A:174:PHE:HB3	2.17	0.44
1:A:172:LEU:O	1:A:175:CYS:HB2	2.16	0.44
1:A:212:ILE:HG23	1:A:501:PRO:CB	2.47	0.44
1:A:252:PRO:HG2	1:A:315:ASN:OD1	2.17	0.44
1:A:262:ARG:HD2	1:A:276:CYS:HA	2.00	0.44
1:A:551:TYR:O	1:A:552:GLN:C	2.56	0.43
1:A:361:LYS:HB2	1:A:445:VAL:HG13	2.00	0.43
1:A:191:LEU:HD22	1:A:196:ILE:HD11	2.01	0.43
1:A:524:VAL:HG12	1:A:525:CYS:N	2.34	0.43
1:A:463:ILE:HD13	1:A:480:LYS:HB3	2.01	0.42
1:A:307:ILE:HG23	1:A:337:ASP:CB	2.48	0.42
1:A:477:SER:HA	1:A:481:LEU:CD2	2.50	0.42
1:A:531:LEU:HD23	1:A:535:GLY:O	2.20	0.42
1:A:243:SER:OG	1:A:244:PHE:N	2.52	0.41
1:A:174:PHE:CE1	1:A:178:TYR:CD2	3.08	0.41
1:A:519:GLU:O	1:A:565:LYS:HG2	2.21	0.41
1:A:221:PHE:CD2	1:A:543:LYS:HG2	2.55	0.41
1:A:538:SER:O	1:A:542:ILE:HG22	2.20	0.41
1:A:179:ILE:HB	1:A:184:CYS:SG	2.61	0.41
1:A:466:ILE:HD11	1:A:480:LYS:HG3	2.03	0.41

Continued on next page...

Continued from previous page...

Atom-1	Atom-2	Interatomic distance (Å)	Clash overlap (Å)
1:A:181:GLY:O	1:A:182:GLU:C	2.59	0.41
1:A:162:ASN:ND2	1:A:164:GLU:OE2	2.55	0.40

There are no symmetry-related clashes.

5.3 Torsion angles [i](#)

5.3.1 Protein backbone [i](#)

In the following table, the Percentiles column shows the percent Ramachandran outliers of the chain as a percentile score with respect to all X-ray entries followed by that with respect to entries of similar resolution.

The Analysed column shows the number of residues for which the backbone conformation was analysed, and the total number of residues.

Mol	Chain	Analysed	Favoured	Allowed	Outliers	Percentiles
1	A	355/431 (82%)	292 (82%)	54 (15%)	9 (2%)	5 27

All (9) Ramachandran outliers are listed below:

Mol	Chain	Res	Type
1	A	235	ASP
1	A	482	LYS
1	A	315	ASN
1	A	467	LYS
1	A	552	GLN
1	A	165	PHE
1	A	468	SER
1	A	213	LYS
1	A	521	GLY

5.3.2 Protein sidechains [i](#)

In the following table, the Percentiles column shows the percent sidechain outliers of the chain as a percentile score with respect to all X-ray entries followed by that with respect to entries of similar resolution.

The Analysed column shows the number of residues for which the sidechain conformation was analysed, and the total number of residues.

Mol	Chain	Analysed	Rotameric	Outliers	Percentiles
1	A	319/383 (83%)	302 (95%)	17 (5%)	22 53

All (17) residues with a non-rotameric sidechain are listed below:

Mol	Chain	Res	Type
1	A	166	PHE
1	A	202	SER
1	A	253	ARG
1	A	265	ARG
1	A	274	ASN
1	A	279	ASN
1	A	280	ASN
1	A	317	ASP
1	A	421	LYS
1	A	450	ASN
1	A	464	ASN
1	A	465	ASP
1	A	471	ASN
1	A	472	LYS
1	A	477	SER
1	A	497	ASN
1	A	553	ARG

Sometimes sidechains can be flipped to improve hydrogen bonding and reduce clashes. All (3) such sidechains are listed below:

Mol	Chain	Res	Type
1	A	315	ASN
1	A	471	ASN
1	A	541	GLN

5.3.3 RNA [i](#)

There are no RNA molecules in this entry.

5.4 Non-standard residues in protein, DNA, RNA chains [i](#)

There are no non-standard protein/DNA/RNA residues in this entry.

5.5 Carbohydrates [i](#)

There are no monosaccharides in this entry.

5.6 Ligand geometry [i](#)

3 ligands are modelled in this entry.

In the following table, the Counts columns list the number of bonds (or angles) for which Mogul statistics could be retrieved, the number of bonds (or angles) that are observed in the model and the number of bonds (or angles) that are defined in the Chemical Component Dictionary. The Link column lists molecule types, if any, to which the group is linked. The Z score for a bond length (or angle) is the number of standard deviations the observed value is removed from the expected value. A bond length (or angle) with $|Z| > 2$ is considered an outlier worth inspection. RMSZ is the root-mean-square of all Z scores of the bond lengths (or angles).

Mol	Type	Chain	Res	Link	Bond lengths			Bond angles		
					Counts	RMSZ	# Z > 2	Counts	RMSZ	# Z > 2
2	FMN	A	601	-	33,33,33	1.52	7 (21%)	48,50,50	1.49	8 (16%)
4	7NE	A	603	-	23,24,24	3.15	4 (17%)	27,33,33	1.48	5 (18%)
3	ORO	A	602	-	9,11,11	1.70	3 (33%)	8,15,15	3.53	3 (37%)

In the following table, the Chirals column lists the number of chiral outliers, the number of chiral centers analysed, the number of these observed in the model and the number defined in the Chemical Component Dictionary. Similar counts are reported in the Torsion and Rings columns. '-' means no outliers of that kind were identified.

Mol	Type	Chain	Res	Link	Chirals	Torsions	Rings
2	FMN	A	601	-	-	3/18/18/18	0/3/3/3
4	7NE	A	603	-	-	4/11/24/24	0/3/3/3
3	ORO	A	602	-	-	4/4/4/4	0/1/1/1

All (14) bond length outliers are listed below:

Mol	Chain	Res	Type	Atoms	Z	Observed(Å)	Ideal(Å)
4	A	603	7NE	O23-C19	12.16	1.46	1.34
4	A	603	7NE	O26-C25	6.53	1.45	1.33
2	A	601	FMN	C9A-C5A	5.23	1.49	1.41
4	A	603	7NE	C20-C19	-3.65	1.32	1.39
3	A	602	ORO	C4-N3	3.12	1.38	1.33
2	A	601	FMN	C4-N3	-3.11	1.33	1.38
4	A	603	7NE	C16-N18	-3.05	1.35	1.41
3	A	602	ORO	C6-C7	-2.63	1.47	1.50

Continued on next page...

Continued from previous page...

Mol	Chain	Res	Type	Atoms	Z	Observed(Å)	Ideal(Å)
2	A	601	FMN	C4A-N5	2.60	1.35	1.30
3	A	602	ORO	O72-C7	-2.54	1.22	1.30
2	A	601	FMN	C8-C7	2.52	1.47	1.40
2	A	601	FMN	C2-N3	-2.27	1.33	1.39
2	A	601	FMN	C5A-N5	-2.05	1.35	1.39
2	A	601	FMN	C10-N10	2.04	1.41	1.37

All (16) bond angle outliers are listed below:

Mol	Chain	Res	Type	Atoms	Z	Observed(°)	Ideal(°)
3	A	602	ORO	C5-C4-N3	-8.11	114.61	124.08
4	A	603	7NE	O26-C25-C20	4.66	120.17	112.05
3	A	602	ORO	C6-C5-C4	4.26	119.48	116.73
2	A	601	FMN	C4-C4A-N5	3.75	123.56	118.23
2	A	601	FMN	C10-N1-C2	3.19	123.27	116.90
2	A	601	FMN	C4A-C10-N1	-3.08	117.58	124.73
3	A	602	ORO	O71-C7-C6	-2.72	115.72	121.24
2	A	601	FMN	C4A-C4-N3	2.69	120.02	113.19
4	A	603	7NE	C16-N18-C19	-2.59	120.04	128.67
2	A	601	FMN	O2P-P-O5'	-2.38	100.39	106.73
4	A	603	7NE	O26-C25-O29	-2.28	119.22	123.34
4	A	603	7NE	O24-C21-C20	-2.27	124.99	128.74
2	A	601	FMN	O3P-P-O2P	2.24	116.18	107.64
4	A	603	7NE	O29-C25-C20	-2.17	120.61	124.62
2	A	601	FMN	O3'-C3'-C2'	2.12	113.93	108.81
2	A	601	FMN	C4A-C10-N10	2.10	119.55	116.48

There are no chirality outliers.

All (11) torsion outliers are listed below:

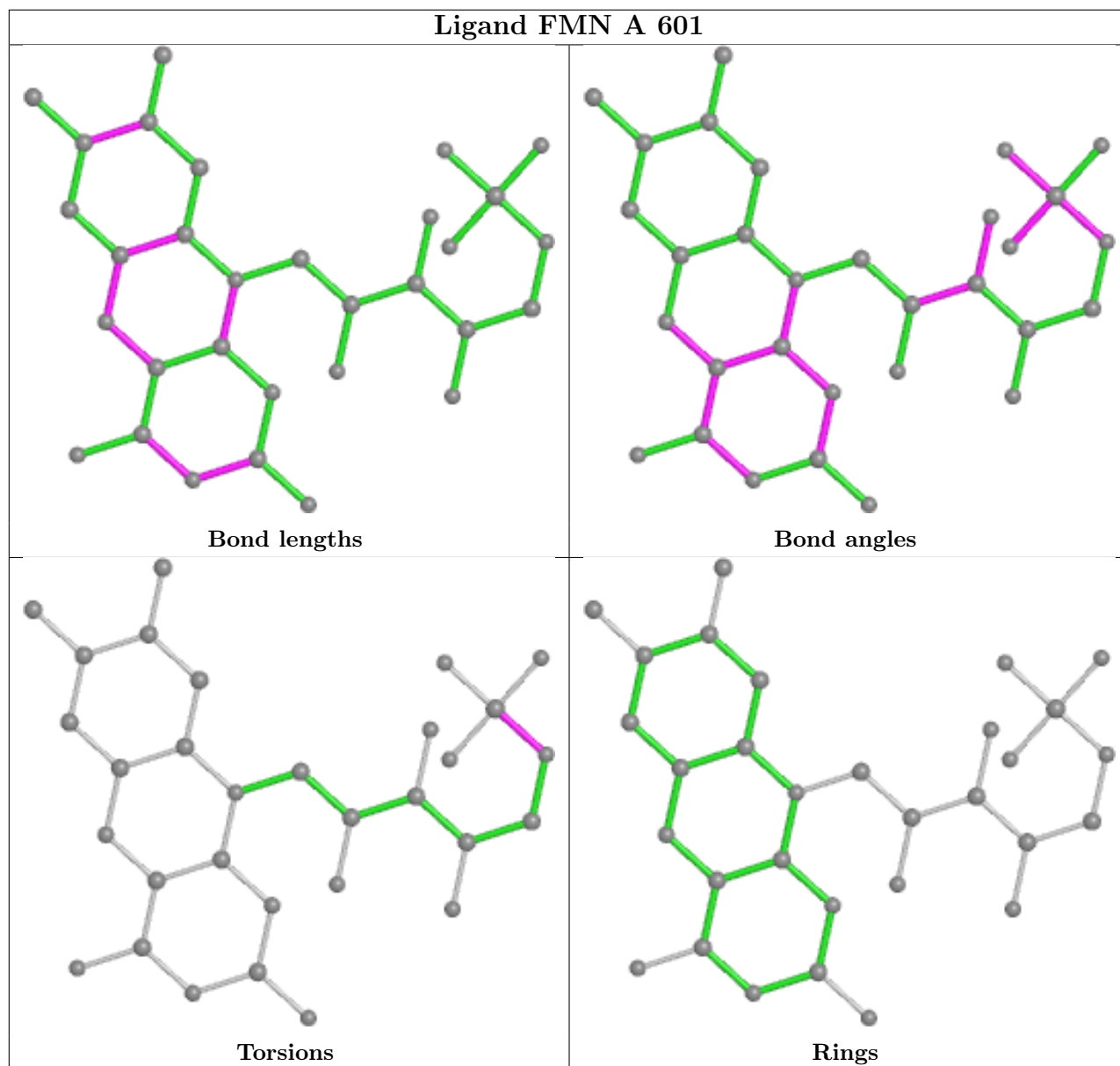
Mol	Chain	Res	Type	Atoms
2	A	601	FMN	C5'-O5'-P-O1P
2	A	601	FMN	C5'-O5'-P-O2P
2	A	601	FMN	C5'-O5'-P-O3P
3	A	602	ORO	N1-C6-C7-O71
3	A	602	ORO	N1-C6-C7-O72
3	A	602	ORO	C5-C6-C7-O71
3	A	602	ORO	C5-C6-C7-O72
4	A	603	7NE	O29-C25-O26-C27
4	A	603	7NE	C20-C25-O26-C27
4	A	603	7NE	C28-C27-O26-C25
4	A	603	7NE	C15-C16-N18-C19

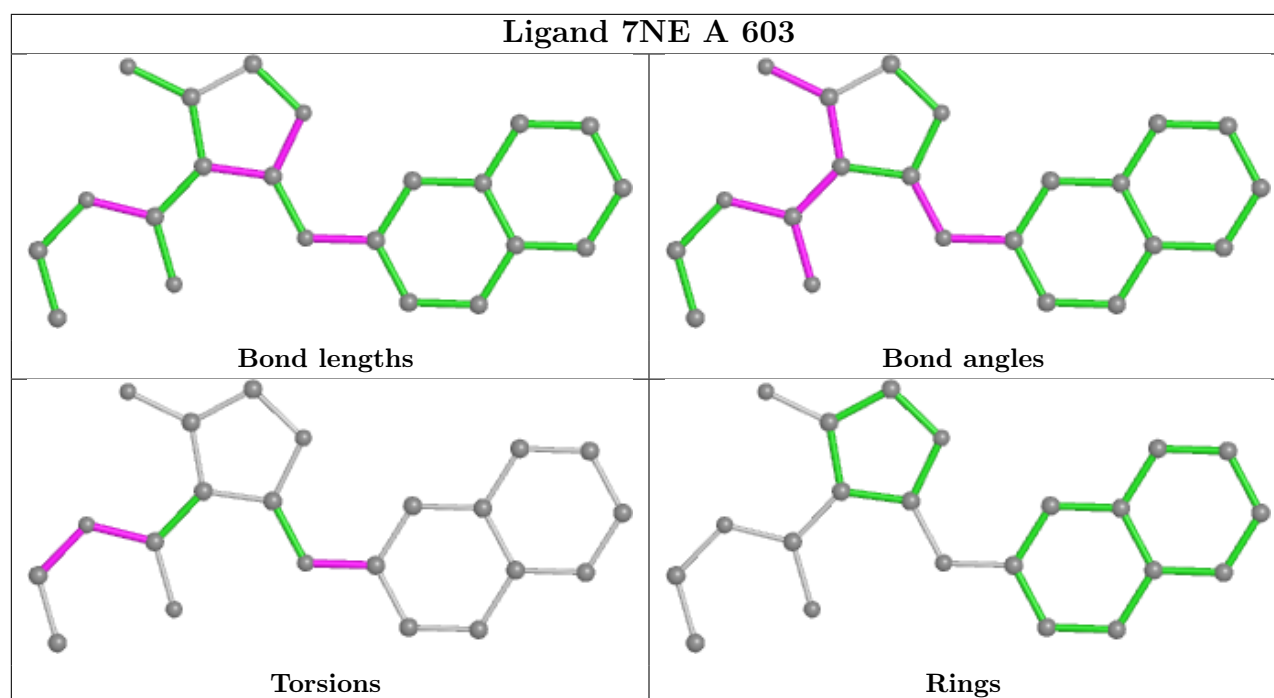
There are no ring outliers.

3 monomers are involved in 8 short contacts:

Mol	Chain	Res	Type	Clashes	Symm-Clashes
2	A	601	FMN	2	0
4	A	603	7NE	5	0
3	A	602	ORO	1	0

The following is a two-dimensional graphical depiction of Mogul quality analysis of bond lengths, bond angles, torsion angles, and ring geometry for all instances of the Ligand of Interest. In addition, ligands with molecular weight > 250 and outliers as shown on the validation Tables will also be included. For torsion angles, if less than 5% of the Mogul distribution of torsion angles is within 10 degrees of the torsion angle in question, then that torsion angle is considered an outlier. Any bond that is central to one or more torsion angles identified as an outlier by Mogul will be highlighted in the graph. For rings, the root-mean-square deviation (RMSD) between the ring in question and similar rings identified by Mogul is calculated over all ring torsion angles. If the average RMSD is greater than 60 degrees and the minimal RMSD between the ring in question and any Mogul-identified rings is also greater than 60 degrees, then that ring is considered an outlier. The outliers are highlighted in purple. The color gray indicates Mogul did not find sufficient equivalents in the CSD to analyse the geometry.





5.7 Other polymers [i](#)

There are no such residues in this entry.

5.8 Polymer linkage issues [i](#)

There are no chain breaks in this entry.

6 Fit of model and data

6.1 Protein, DNA and RNA chains

In the following table, the column labelled ‘#RSRZ > 2’ contains the number (and percentage) of RSRZ outliers, followed by percent RSRZ outliers for the chain as percentile scores relative to all X-ray entries and entries of similar resolution. The OWAB column contains the minimum, median, 95th percentile and maximum values of the occupancy-weighted average B-factor per residue. The column labelled ‘Q < 0.9’ lists the number of (and percentage) of residues with an average occupancy less than 0.9.

Mol	Chain	Analysed	<RSRZ>	#RSRZ>2	OWAB(Å ²)	Q<0.9
1	A	361/431 (83%)	0.52	31 (8%) 10 10	31, 71, 118, 145	0

All (31) RSRZ outliers are listed below:

Mol	Chain	Res	Type	RSRZ
1	A	302	LEU	5.7
1	A	201	THR	4.5
1	A	300	ASP	4.5
1	A	230	ASN	4.4
1	A	375	GLU	4.3
1	A	303	LEU	3.6
1	A	213	LYS	3.4
1	A	373	ASN	3.3
1	A	372	ASP	3.1
1	A	280	ASN	3.1
1	A	344	SER	3.0
1	A	314	LYS	2.9
1	A	301	LYS	2.9
1	A	231	GLY	2.8
1	A	203	ASN	2.6
1	A	471	ASN	2.5
1	A	199	TYR	2.5
1	A	334	ARG	2.5
1	A	318	THR	2.4
1	A	320	ASN	2.4
1	A	356	GLU	2.4
1	A	161	TYR	2.4
1	A	281	MET	2.4
1	A	214	HIS	2.4
1	A	295	LYS	2.4
1	A	346	PRO	2.2
1	A	313	GLY	2.2

Continued on next page...

Continued from previous page...

Mol	Chain	Res	Type	RSRZ
1	A	204	ASP	2.1
1	A	293	PHE	2.1
1	A	284	ASP	2.1
1	A	317	ASP	2.0

6.2 Non-standard residues in protein, DNA, RNA chains [i](#)

There are no non-standard protein/DNA/RNA residues in this entry.

6.3 Carbohydrates [i](#)

There are no monosaccharides in this entry.

6.4 Ligands [i](#)

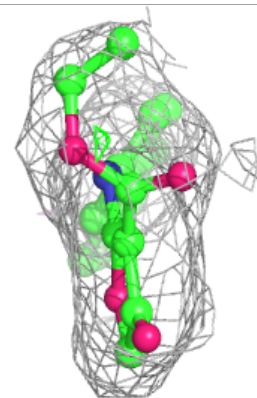
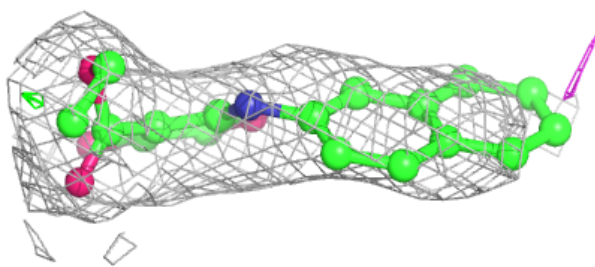
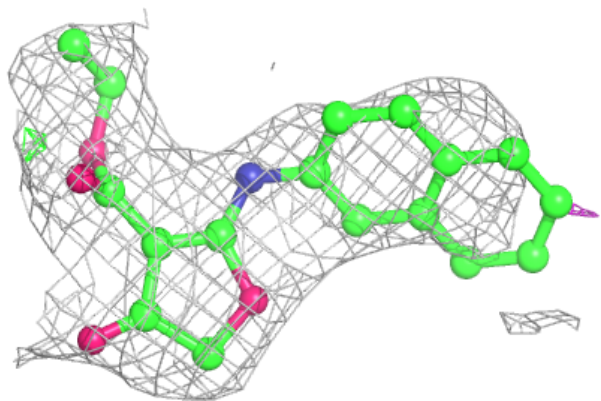
In the following table, the Atoms column lists the number of modelled atoms in the group and the number defined in the chemical component dictionary. The B-factors column lists the minimum, median, 95th percentile and maximum values of B factors of atoms in the group. The column labelled 'Q < 0.9' lists the number of atoms with occupancy less than 0.9.

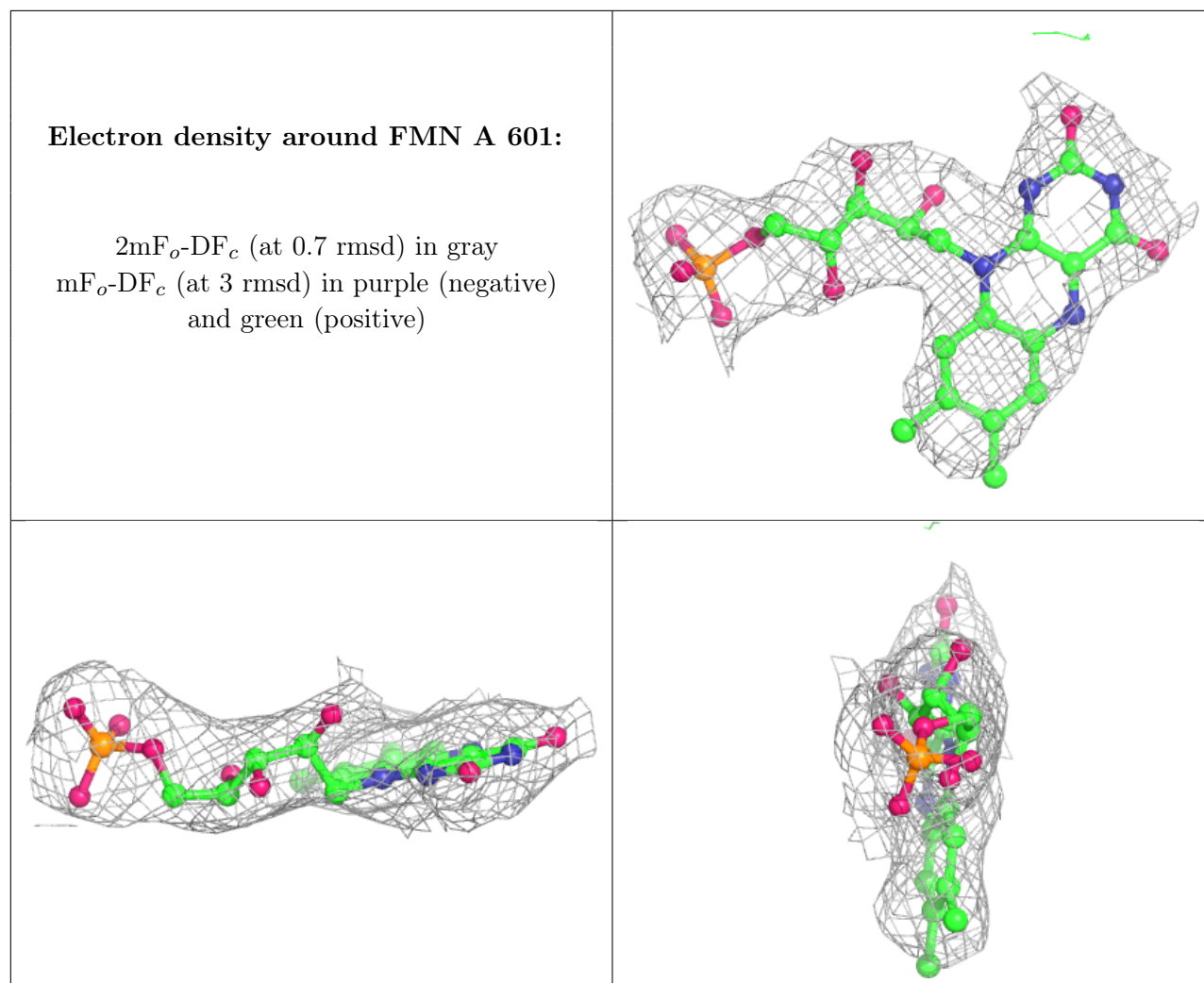
Mol	Type	Chain	Res	Atoms	RSCC	RSR	B-factors(Å ²)	Q < 0.9
4	7NE	A	603	22/22	0.91	0.39	45,62,84,87	0
2	FMN	A	601	31/31	0.96	0.25	35,38,45,47	0
3	ORO	A	602	11/11	0.97	0.24	40,42,45,45	0

The following is a graphical depiction of the model fit to experimental electron density of all instances of the Ligand of Interest. In addition, ligands with molecular weight > 250 and outliers as shown on the geometry validation Tables will also be included. Each fit is shown from different orientation to approximate a three-dimensional view.

Electron density around 7NE A 603:

$2mF_o-DF_c$ (at 0.7 rmsd) in gray
 mF_o-DF_c (at 3 rmsd) in purple (negative)
and green (positive)





6.5 Other polymers [i](#)

There are no such residues in this entry.