



# Full wwPDB X-ray Structure Validation Report ⓘ

Nov 1, 2023 – 04:48 PM JST

PDB ID : 5WS9  
Title : Pyruvate kinase (PYK) from Mycobacterium tuberculosis in complex with Oxalate, ATP and allosteric activator AMP  
Authors : Zhong, W.; Cai, Q.; El Sahili, A.; Lescar, J.; Dedon, P.C.  
Deposited on : 2016-12-06  
Resolution : 1.90 Å(reported)

This is a Full wwPDB X-ray Structure Validation Report for a publicly released PDB entry.

We welcome your comments at [validation@mail.wwpdb.org](mailto:validation@mail.wwpdb.org)

A user guide is available at

<https://www.wwpdb.org/validation/2017/XrayValidationReportHelp>

with specific help available everywhere you see the ⓘ symbol.

The types of validation reports are described at

<http://www.wwpdb.org/validation/2017/FAQs#types>.

---

The following versions of software and data (see [references ⓘ](#)) were used in the production of this report:

MolProbity : 4.02b-467  
Mogul : 1.8.5 (274361), CSD as541be (2020)  
Xtriage (Phenix) : 1.13  
EDS : 2.36  
buster-report : 1.1.7 (2018)  
Percentile statistics : 20191225.v01 (using entries in the PDB archive December 25th 2019)  
Refmac : 5.8.0158  
CCP4 : 7.0.044 (Gargrove)  
Ideal geometry (proteins) : Engh & Huber (2001)  
Ideal geometry (DNA, RNA) : Parkinson et al. (1996)  
Validation Pipeline (wwPDB-VP) : 2.36

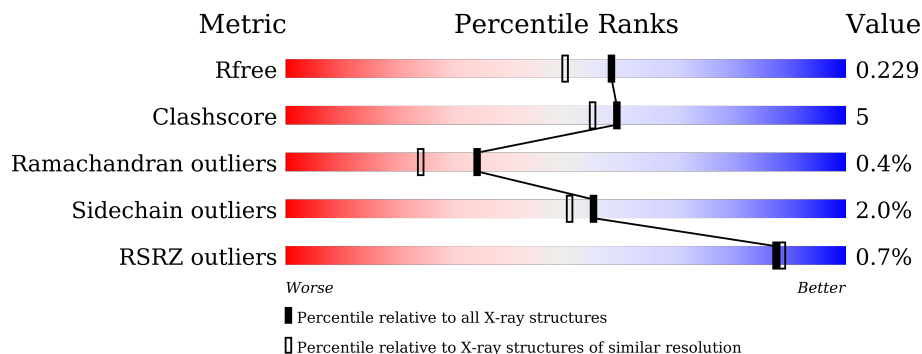
# 1 Overall quality at a glance

The following experimental techniques were used to determine the structure:

*X-RAY DIFFRACTION*

The reported resolution of this entry is 1.90 Å.

Percentile scores (ranging between 0-100) for global validation metrics of the entry are shown in the following graphic. The table shows the number of entries on which the scores are based.



Metric	Whole archive (#Entries)	Similar resolution (#Entries, resolution range(Å))
$R_{free}$	130704	6207 (1.90-1.90)
Clashscore	141614	6847 (1.90-1.90)
Ramachandran outliers	138981	6760 (1.90-1.90)
Sidechain outliers	138945	6760 (1.90-1.90)
RSRZ outliers	127900	6082 (1.90-1.90)

The table below summarises the geometric issues observed across the polymeric chains and their fit to the electron density. The red, orange, yellow and green segments of the lower bar indicate the fraction of residues that contain outliers for  $\geq 3$ , 2, 1 and 0 types of geometric quality criteria respectively. A grey segment represents the fraction of residues that are not modelled. The numeric value for each fraction is indicated below the corresponding segment, with a dot representing fractions  $\leq 5\%$ . The upper red bar (where present) indicates the fraction of residues that have poor fit to the electron density. The numeric value is given above the bar.

Mol	Chain	Length	Quality of chain
1	A	475	
1	B	475	
1	C	475	
1	D	475	

The following table lists non-polymeric compounds, carbohydrate monomers and non-standard residues in protein, DNA, RNA chains that are outliers for geometric or electron-density-fit crite-

ria:

Mol	Type	Chain	Res	Chirality	Geometry	Clashes	Electron density
7	PO4	B	506	-	-	X	-
7	PO4	C	506	-	-	X	-
7	PO4	D	507	-	-	X	-

## 2 Entry composition [i](#)

There are 8 unique types of molecules in this entry. The entry contains 15920 atoms, of which 0 are hydrogens and 0 are deuteriums.

In the tables below, the ZeroOcc column contains the number of atoms modelled with zero occupancy, the AltConf column contains the number of residues with at least one atom in alternate conformation and the Trace column contains the number of residues modelled with at most 2 atoms.

- Molecule 1 is a protein called Pyruvate kinase.

Mol	Chain	Residues	Atoms					ZeroOcc	AltConf	Trace
			Total	C	N	O	S			
1	A	471	Total 3563	C 2217	N 645	O 683	S 18	0	2	0
1	B	471	Total 3543	C 2206	N 640	O 679	S 18	0	0	0
1	C	471	Total 3553	C 2212	N 643	O 680	S 18	0	1	0
1	D	471	Total 3552	C 2212	N 642	O 680	S 18	0	1	0

There are 12 discrepancies between the modelled and reference sequences:

Chain	Residue	Modelled	Actual	Comment	Reference
A	-2	GLY	-	expression tag	UNP P9WKE5
A	-1	GLY	-	expression tag	UNP P9WKE5
A	0	HIS	-	expression tag	UNP P9WKE5
B	-2	GLY	-	expression tag	UNP P9WKE5
B	-1	GLY	-	expression tag	UNP P9WKE5
B	0	HIS	-	expression tag	UNP P9WKE5
C	-2	GLY	-	expression tag	UNP P9WKE5
C	-1	GLY	-	expression tag	UNP P9WKE5
C	0	HIS	-	expression tag	UNP P9WKE5
D	-2	GLY	-	expression tag	UNP P9WKE5
D	-1	GLY	-	expression tag	UNP P9WKE5
D	0	HIS	-	expression tag	UNP P9WKE5

- Molecule 2 is MAGNESIUM ION (three-letter code: MG) (formula: Mg).

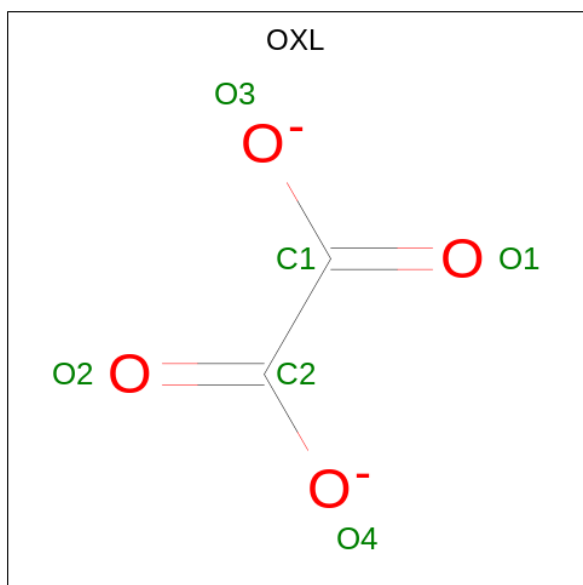
Mol	Chain	Residues	Atoms		ZeroOcc	AltConf
2	A	1	Total 1	Mg 1	0	0
2	B	1	Total 1	Mg 1	0	0

*Continued on next page...*

Continued from previous page...

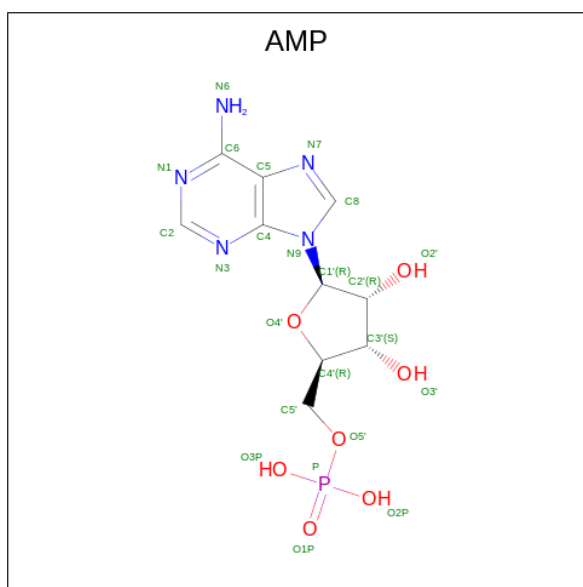
Mol	Chain	Residues	Atoms	ZeroOcc	AltConf
2	C	2	Total Mg 2 2	0	0
2	D	2	Total Mg 2 2	0	0

- Molecule 3 is OXALATE ION (three-letter code: OXL) (formula:  $C_2O_4$ ).



Mol	Chain	Residues	Atoms	ZeroOcc	AltConf
3	A	1	Total C O 6 2 4	0	0
3	B	1	Total C O 6 2 4	0	0
3	C	1	Total C O 6 2 4	0	0
3	D	1	Total C O 6 2 4	0	0

- Molecule 4 is ADENOSINE MONOPHOSPHATE (three-letter code: AMP) (formula:  $C_{10}H_{14}N_5O_7P$ ).

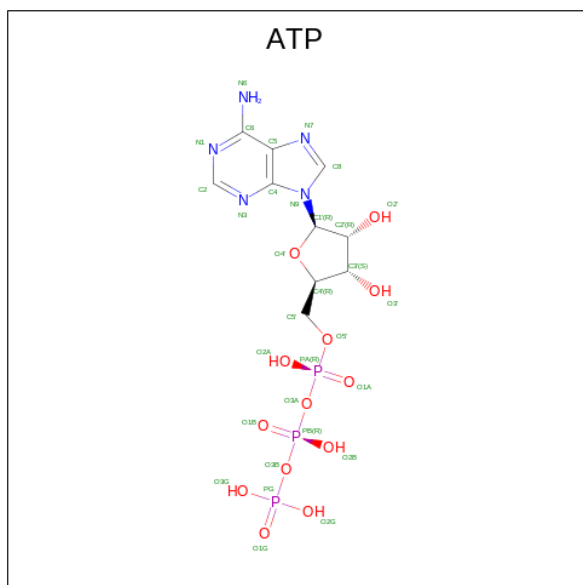


Mol	Chain	Residues	Atoms					ZeroOcc	AltConf
			Total	C	N	O	P		
4	A	1	23	10	5	7	1	0	0
4	B	1	23	10	5	7	1	0	0
4	C	1	23	10	5	7	1	0	0
4	D	1	23	10	5	7	1	0	0

- Molecule 5 is POTASSIUM ION (three-letter code: K) (formula: K).

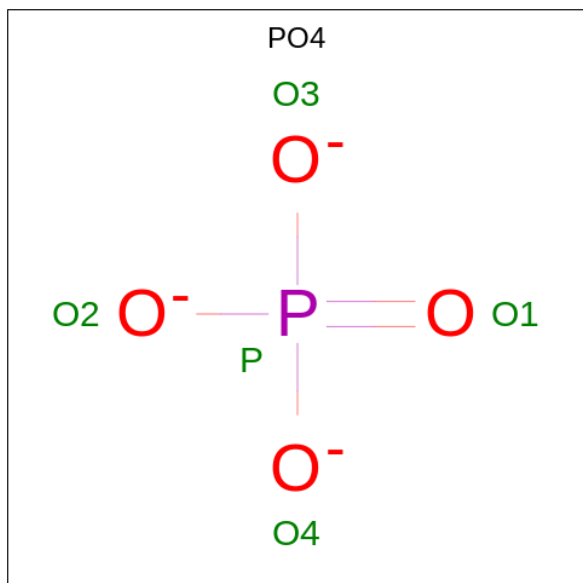
Mol	Chain	Residues	Atoms		ZeroOcc	AltConf
			Total	K		
5	A	1	1	1	0	0
5	B	1	1	1	0	0
5	D	1	1	1	0	0

- Molecule 6 is ADENOSINE-5'-TRIPHOSPHATE (three-letter code: ATP) (formula: C<sub>10</sub>H<sub>16</sub>N<sub>5</sub>O<sub>13</sub>P<sub>3</sub>).



Mol	Chain	Residues	Atoms					ZeroOcc	AltConf
			Total	C	N	O	P		
6	A	1	Total	C	N	O	P	0	0
			31	10	5	13	3		
6	B	1	Total	C	N	O	P	0	0
			31	10	5	13	3		
6	C	1	Total	C	N	O	P	0	0
			31	10	5	13	3		
6	D	1	Total	C	N	O	P	0	0
			31	10	5	13	3		

- Molecule 7 is PHOSPHATE ION (three-letter code: PO4) (formula: O<sub>4</sub>P).



Mol	Chain	Residues	Atoms	ZeroOcc	AltConf
7	A	1	Total O P 5 4 1	0	0
7	B	1	Total O P 5 4 1	0	0
7	C	1	Total O P 5 4 1	0	0
7	D	1	Total O P 5 4 1	0	0

- Molecule 8 is water.

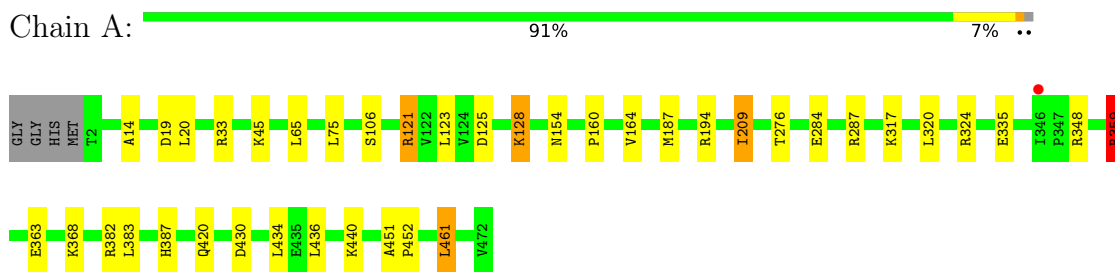
Mol	Chain	Residues	Atoms	ZeroOcc	AltConf
8	A	401	Total O 401 401	0	0
8	B	385	Total O 385 385	0	0
8	C	334	Total O 334 334	0	0
8	D	320	Total O 320 320	0	0



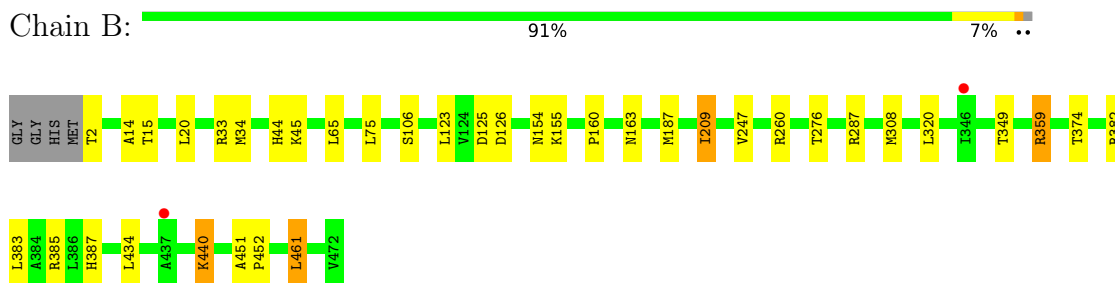
### 3 Residue-property plots

These plots are drawn for all protein, RNA, DNA and oligosaccharide chains in the entry. The first graphic for a chain summarises the proportions of the various outlier classes displayed in the second graphic. The second graphic shows the sequence view annotated by issues in geometry and electron density. Residues are color-coded according to the number of geometric quality criteria for which they contain at least one outlier: green = 0, yellow = 1, orange = 2 and red = 3 or more. A red dot above a residue indicates a poor fit to the electron density ( $RSRZ > 2$ ). Stretches of 2 or more consecutive residues without any outlier are shown as a green connector. Residues present in the sample, but not in the model, are shown in grey.

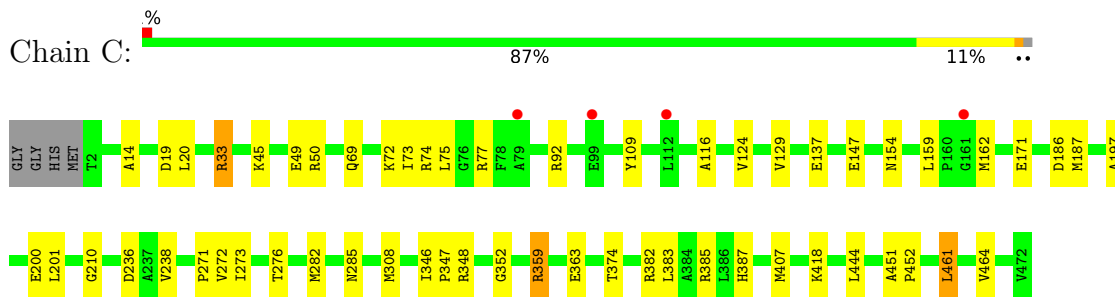
- Molecule 1: Pyruvate kinase



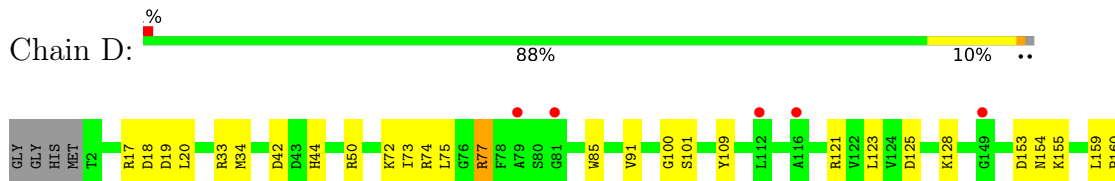
- Molecule 1: Pyruvate kinase



- Molecule 1: Pyruvate kinase



- Molecule 1: Pyruvate kinase





## 4 Data and refinement statistics i

Property	Value	Source
Space group	P 31	Depositor
Cell constants a, b, c, $\alpha$ , $\beta$ , $\gamma$	127.19Å 127.19Å 144.92Å 90.00° 90.00° 120.00°	Depositor
Resolution (Å)	60.54 – 1.90 60.54 – 1.90	Depositor EDS
% Data completeness (in resolution range)	100.0 (60.54-1.90) 100.0 (60.54-1.90)	Depositor EDS
$R_{merge}$	(Not available)	Depositor
$R_{sym}$	(Not available)	Depositor
$\langle I/\sigma(I) \rangle$ <sup>1</sup>	2.27 (at 1.90Å)	Xtrriage
Refinement program	REFMAC 5.8.0158	Depositor
R, $R_{free}$	0.197 , 0.223 0.203 , 0.229	Depositor DCC
$R_{free}$ test set	10685 reflections (5.17%)	wwPDB-VP
Wilson B-factor (Å <sup>2</sup> )	25.2	Xtrriage
Anisotropy	0.599	Xtrriage
Bulk solvent $k_{sol}$ (e/Å <sup>3</sup> ), $B_{sol}$ (Å <sup>2</sup> )	0.34 , 28.8	EDS
L-test for twinning <sup>2</sup>	$\langle  L  \rangle = 0.43$ , $\langle L^2 \rangle = 0.25$	Xtrriage
Estimated twinning fraction	0.257 for -h,-k,l 0.480 for h,-h-k,-l 0.257 for -k,-h,-l	Xtrriage
$F_o, F_c$ correlation	0.97	EDS
Total number of atoms	15920	wwPDB-VP
Average B, all atoms (Å <sup>2</sup> )	37.0	wwPDB-VP

Xtrriage's analysis on translational NCS is as follows: *The largest off-origin peak in the Patterson function is 3.52% of the height of the origin peak. No significant pseudotranslation is detected.*

<sup>1</sup>Intensities estimated from amplitudes.

<sup>2</sup>Theoretical values of  $\langle |L| \rangle$ ,  $\langle L^2 \rangle$  for acentric reflections are 0.5, 0.333 respectively for untwinned datasets, and 0.375, 0.2 for perfectly twinned datasets.

## 5 Model quality [i](#)

### 5.1 Standard geometry [i](#)

Bond lengths and bond angles in the following residue types are not validated in this section: MG, ATP, K, PO4, AMP, OXL

The Z score for a bond length (or angle) is the number of standard deviations the observed value is removed from the expected value. A bond length (or angle) with  $|Z| > 5$  is considered an outlier worth inspection. RMSZ is the root-mean-square of all Z scores of the bond lengths (or angles).

Mol	Chain	Bond lengths		Bond angles	
		RMSZ	# Z  >5	RMSZ	# Z  >5
1	A	0.64	0/3613	0.68	3/4908 (0.1%)
1	B	0.63	0/3593	0.68	3/4881 (0.1%)
1	C	0.61	0/3604	0.65	2/4896 (0.0%)
1	D	0.60	0/3602	0.67	2/4892 (0.0%)
All	All	0.62	0/14412	0.67	10/19577 (0.1%)

There are no bond length outliers.

All (10) bond angle outliers are listed below:

Mol	Chain	Res	Type	Atoms	Z	Observed(°)	Ideal(°)
1	D	33	ARG	NE-CZ-NH1	-9.50	115.55	120.30
1	D	33	ARG	NE-CZ-NH2	8.59	124.59	120.30
1	B	33	ARG	NE-CZ-NH2	-7.27	116.67	120.30
1	C	33	ARG	NE-CZ-NH2	-6.72	116.94	120.30
1	C	33	ARG	NE-CZ-NH1	6.71	123.66	120.30
1	A	33	ARG	NE-CZ-NH2	-6.56	117.02	120.30
1	B	33	ARG	NE-CZ-NH1	5.76	123.18	120.30
1	B	359	ARG	NE-CZ-NH2	-5.71	117.44	120.30
1	A	33	ARG	NE-CZ-NH1	5.30	122.95	120.30
1	A	359	ARG	NE-CZ-NH1	-5.15	117.73	120.30

There are no chirality outliers.

There are no planarity outliers.

### 5.2 Too-close contacts [i](#)

In the following table, the Non-H and H(model) columns list the number of non-hydrogen atoms and hydrogen atoms in the chain respectively. The H(added) column lists the number of hydrogen

atoms added and optimized by MolProbity. The Clashes column lists the number of clashes within the asymmetric unit, whereas Symm-Clashes lists symmetry-related clashes.

Mol	Chain	Non-H	H(model)	H(added)	Clashes	Symm-Clashes
1	A	3563	0	3626	24	0
1	B	3543	0	3608	34	0
1	C	3553	0	3614	39	1
1	D	3552	0	3620	37	1
2	A	1	0	0	0	0
2	B	1	0	0	0	0
2	C	2	0	0	0	0
2	D	2	0	0	0	0
3	A	6	0	0	0	0
3	B	6	0	0	1	0
3	C	6	0	0	0	0
3	D	6	0	0	0	0
4	A	23	0	12	0	0
4	B	23	0	12	1	0
4	C	23	0	12	1	0
4	D	23	0	12	0	0
5	A	1	0	0	0	0
5	B	1	0	0	0	0
5	D	1	0	0	0	0
6	A	31	0	12	0	0
6	B	31	0	12	0	0
6	C	31	0	12	0	0
6	D	31	0	12	0	0
7	A	5	0	0	1	0
7	B	5	0	0	3	0
7	C	5	0	0	4	0
7	D	5	0	0	2	0
8	A	401	0	0	9	0
8	B	385	0	0	9	1
8	C	334	0	0	7	0
8	D	320	0	0	3	1
All	All	15920	0	14564	135	2

The all-atom clashscore is defined as the number of clashes found per 1000 atoms (including hydrogen atoms). The all-atom clashscore for this structure is 5.

All (135) close contacts within the same asymmetric unit are listed below, sorted by their clash magnitude.

Atom-1	Atom-2	Interatomic distance (Å)	Clash overlap (Å)
1:B:125:ASP:OD2	1:B:155:LYS:HE3	1.65	0.94
1:D:77:ARG:HD3	1:D:153:ASP:OD2	1.69	0.93
1:D:125:ASP:HB2	1:D:155[A]:LYS:HD3	1.52	0.90
1:A:382:ARG:HD3	7:A:506:PO4:O1	1.73	0.89
1:A:128:LYS:HB3	8:A:850:HOH:O	1.74	0.87
1:B:15:THR:HA	1:B:20:LEU:HD23	1.57	0.86
3:B:502:OXL:O2	8:B:601:HOH:O	2.01	0.78
1:C:72:LYS:HG2	1:C:74:ARG:HH11	1.48	0.78
1:D:121:ARG:NH2	8:D:601:HOH:O	2.18	0.76
1:B:65:LEU:HD13	1:B:187:MET:HG3	1.68	0.76
1:C:72:LYS:HG2	1:C:74:ARG:NH1	2.02	0.75
1:B:359:ARG:HD2	8:B:607:HOH:O	1.85	0.75
1:A:65:LEU:HD13	1:A:187:MET:HG3	1.67	0.75
1:A:121:ARG:NH1	8:A:601:HOH:O	2.05	0.74
1:B:382:ARG:HD3	7:B:506:PO4:O4	1.88	0.73
1:C:77:ARG:NH1	8:C:601:HOH:O	2.09	0.72
1:A:284[A]:GLU:OE2	1:A:317:LYS:NZ	2.26	0.69
1:D:72:LYS:HG2	1:D:74:ARG:NH2	2.07	0.69
1:D:385:ARG:NH2	7:D:507:PO4:O2	2.26	0.69
1:C:116:ALA:HA	1:C:162:MET:HE2	1.76	0.68
1:D:17:ARG:HG2	1:D:18:ASP:N	2.09	0.68
1:A:430:ASP:OD2	8:A:602:HOH:O	2.11	0.67
1:C:347:PRO:HA	7:C:506:PO4:O4	1.94	0.67
1:A:14:ALA:O	1:A:20:LEU:HD23	1.94	0.67
1:B:34:MET:CE	1:B:44:HIS:HB3	2.24	0.67
1:D:72:LYS:HG2	1:D:74:ARG:HH21	1.61	0.65
1:D:461:LEU:HD12	1:D:461:LEU:C	2.18	0.63
1:C:14:ALA:O	1:C:20:LEU:HD23	1.99	0.62
1:D:17:ARG:NH2	1:D:20:LEU:HD21	2.15	0.61
1:C:116:ALA:HA	1:C:162:MET:CE	2.30	0.61
1:D:19:ASP:H	1:D:50:ARG:HH22	1.49	0.60
1:A:461:LEU:HD12	1:A:461:LEU:C	2.21	0.60
1:D:85:TRP:CZ2	1:D:91:VAL:HG11	2.36	0.60
1:D:17:ARG:CG	1:D:18:ASP:N	2.65	0.59
1:B:359:ARG:NH1	8:B:607:HOH:O	2.35	0.59
1:B:461:LEU:C	1:B:461:LEU:HD12	2.22	0.59
1:A:359:ARG:HD3	1:A:363:GLU:OE2	2.03	0.58
1:D:382:ARG:NH1	7:D:507:PO4:O3	2.37	0.58
1:D:125:ASP:CB	1:D:155[A]:LYS:HD3	2.31	0.57
1:D:125:ASP:O	1:D:128:LYS:HG2	2.04	0.57
1:D:266:ARG:O	1:D:385:ARG:HD2	2.05	0.57
1:B:154:ASN:OD1	8:B:602:HOH:O	2.17	0.57

*Continued on next page...*

*Continued from previous page...*

Atom-1	Atom-2	Interatomic distance (Å)	Clash overlap (Å)
1:D:359:ARG:HD3	1:D:363:GLU:OE2	2.05	0.56
1:D:19:ASP:N	1:D:50:ARG:HH22	2.04	0.56
1:C:197:ALA:O	1:C:200:GLU:HG2	2.06	0.55
1:C:359:ARG:HD3	1:C:363:GLU:OE2	2.06	0.55
1:B:385:ARG:NH2	7:B:506:PO4:O1	2.24	0.53
1:B:14:ALA:O	1:B:20:LEU:CD2	2.56	0.53
1:D:205:VAL:HG12	1:D:209:ILE:HD12	1.91	0.52
1:C:385:ARG:NH2	7:C:506:PO4:O2	2.43	0.52
1:A:368:LYS:NZ	8:A:611:HOH:O	2.35	0.52
1:A:209:ILE:N	1:A:209:ILE:HD13	2.25	0.51
1:B:308:MET:HE1	8:B:601:HOH:O	2.10	0.51
1:D:77:ARG:CD	1:D:153:ASP:OD2	2.51	0.51
1:A:451:ALA:HA	1:A:452:PRO:C	2.31	0.51
1:C:50:ARG:NH1	8:C:607:HOH:O	2.37	0.51
1:B:65:LEU:CD1	1:B:187:MET:HG3	2.39	0.51
1:B:451:ALA:HA	1:B:452:PRO:C	2.31	0.50
1:C:352:GLY:HA3	7:C:506:PO4:O2	2.12	0.50
1:B:209:ILE:HD13	1:B:209:ILE:N	2.28	0.49
1:C:451:ALA:HA	1:C:452:PRO:C	2.32	0.49
1:D:75:LEU:O	1:D:154:ASN:HA	2.13	0.49
1:C:461:LEU:C	1:C:461:LEU:HD12	2.33	0.49
1:D:451:ALA:HA	1:D:452:PRO:C	2.32	0.49
1:C:69:GLN:OE1	8:C:602:HOH:O	2.20	0.48
1:D:101:SER:HB3	8:D:608:HOH:O	2.13	0.48
1:B:126:ASP:HA	8:B:664:HOH:O	2.14	0.48
1:C:75:LEU:O	1:C:154:ASN:HA	2.14	0.48
1:B:123:LEU:CD1	1:B:160:PRO:HG3	2.43	0.48
1:D:77:ARG:O	1:D:100:GLY:HA3	2.13	0.48
1:C:359:ARG:HD3	1:C:363:GLU:CD	2.34	0.48
1:C:444:LEU:HD11	1:C:464:VAL:CG1	2.44	0.47
1:B:349:THR:OG1	7:B:506:PO4:O4	2.30	0.47
8:A:601:HOH:O	1:B:287:ARG:NH2	2.47	0.47
1:B:163:ASN:CB	8:B:625:HOH:O	2.63	0.47
1:A:125:ASP:HB3	8:A:850:HOH:O	2.14	0.47
1:A:164:VAL:O	1:A:194:ARG:NH1	2.47	0.46
1:B:123:LEU:HD12	1:B:160:PRO:HG3	1.97	0.46
1:D:34:MET:HE3	1:D:44:HIS:HB3	1.96	0.46
1:D:444:LEU:HD11	1:D:464:VAL:CG1	2.46	0.46
1:A:359:ARG:HD3	1:A:363:GLU:CD	2.36	0.46
1:D:73:ILE:HG23	1:D:109:TYR:HB2	1.97	0.46
1:C:210:GLY:C	8:C:630:HOH:O	2.54	0.46

*Continued on next page...*

*Continued from previous page...*

Atom-1	Atom-2	Interatomic distance (Å)	Clash overlap (Å)
1:C:73:ILE:HG23	1:C:109:TYR:HB2	1.97	0.45
1:D:359:ARG:HD3	1:D:363:GLU:CD	2.36	0.45
1:C:20:LEU:HD12	1:C:20:LEU:HA	1.72	0.45
1:D:155[B]:LYS:HD3	1:D:155[B]:LYS:HA	1.74	0.45
1:C:374:THR:HA	4:C:504:AMP:H5'2	1.98	0.45
1:A:123:LEU:CD2	1:A:160:PRO:HG3	2.47	0.44
1:B:34:MET:HE1	1:B:44:HIS:HB3	1.99	0.44
1:C:147:GLU:HG2	8:C:892:HOH:O	2.16	0.44
1:A:75:LEU:O	1:A:154:ASN:HA	2.17	0.44
1:B:2:THR:HG23	1:B:2:THR:O	2.17	0.44
1:D:77:ARG:HG2	1:D:153:ASP:CG	2.38	0.44
1:C:346:ILE:HD13	1:C:346:ILE:HA	1.82	0.44
1:B:440:LYS:HE2	8:B:700:HOH:O	2.17	0.44
1:B:75:LEU:O	1:B:154:ASN:HA	2.17	0.44
1:C:186:ASP:O	1:C:187:MET:HG3	2.17	0.43
1:C:33:ARG:HD2	1:C:308:MET:SD	2.58	0.43
1:B:14:ALA:O	1:B:20:LEU:HD22	2.18	0.43
1:D:34:MET:CE	1:D:44:HIS:HB3	2.48	0.43
1:B:374:THR:HA	4:B:503:AMP:H5'2	2.01	0.43
1:C:418:LYS:NZ	8:C:625:HOH:O	2.51	0.43
1:B:126:ASP:HB2	1:B:247:VAL:HG21	1.99	0.43
1:B:45:LYS:NZ	8:B:604:HOH:O	2.31	0.42
1:B:320:LEU:HD12	1:B:320:LEU:HA	1.89	0.42
1:B:434:LEU:HD23	1:B:434:LEU:HA	1.89	0.42
1:D:282:MET:HA	1:D:285:ASN:O	2.19	0.42
1:A:20:LEU:HD12	1:A:20:LEU:HA	1.73	0.42
1:B:15:THR:HA	1:B:20:LEU:CD2	2.40	0.42
1:D:298:ASN:ND2	8:D:632:HOH:O	2.53	0.42
1:A:287[A]:ARG:NH1	8:A:628:HOH:O	2.52	0.42
1:A:434:LEU:HD23	1:A:434:LEU:HA	1.95	0.42
1:D:123:LEU:HD23	1:D:160:PRO:HG3	2.01	0.42
1:A:45:LYS:NZ	8:A:629:HOH:O	2.52	0.42
1:B:209:ILE:N	1:B:209:ILE:CD1	2.83	0.42
1:A:209:ILE:N	1:A:209:ILE:CD1	2.82	0.42
1:C:19:ASP:HA	8:C:825:HOH:O	2.19	0.42
1:C:92:ARG:NH1	1:C:137:GLU:OE1	2.47	0.42
1:C:171:GLU:HA	1:C:171:GLU:OE2	2.20	0.41
1:C:273:ILE:HD11	1:C:407:MET:CE	2.50	0.41
1:C:382:ARG:HD3	7:C:506:PO4:O2	2.20	0.41
1:B:260:ARG:CG	1:B:260:ARG:HH21	2.33	0.41
1:A:420:GLN:OE1	8:A:603:HOH:O	2.22	0.41

*Continued on next page...*



Continued from previous page...

Atom-1	Atom-2	Interatomic distance (Å)	Clash overlap (Å)
1:C:282:MET:HA	1:C:285:ASN:O	2.21	0.41
1:C:238:VAL:HG23	1:C:272:VAL:HG23	2.03	0.41
1:C:444:LEU:HD11	1:C:464:VAL:HG13	2.03	0.41
1:A:320:LEU:HB3	1:A:324:ARG:NH2	2.35	0.40
1:C:45:LYS:HE2	1:C:49:GLU:OE1	2.21	0.40
1:C:201:LEU:HD12	1:C:201:LEU:N	2.35	0.40
1:C:124:VAL:HB	1:C:129:VAL:HB	2.02	0.40
1:C:236:ASP:O	1:C:271:PRO:HD2	2.22	0.40
1:D:216:ILE:HG12	1:D:237:ALA:HB3	2.03	0.40
1:D:19:ASP:H	1:D:50:ARG:NH2	2.17	0.40
1:D:178:THR:OG1	1:D:209:ILE:HD11	2.22	0.40

All (2) symmetry-related close contacts are listed below. The label for Atom-2 includes the symmetry operator and encoded unit-cell translations to be applied.

Atom-1	Atom-2	Interatomic distance (Å)	Clash overlap (Å)
8:B:684:HOH:O	8:D:765:HOH:O[2_655]	2.14	0.06
1:C:77:ARG:CZ	1:D:42:ASP:OD2[3_764]	2.18	0.02

## 5.3 Torsion angles [i](#)

### 5.3.1 Protein backbone [i](#)

In the following table, the Percentiles column shows the percent Ramachandran outliers of the chain as a percentile score with respect to all X-ray entries followed by that with respect to entries of similar resolution.

The Analysed column shows the number of residues for which the backbone conformation was analysed, and the total number of residues.

Mol	Chain	Analysed	Favoured	Allowed	Outliers	Percentiles
1	A	471/475 (99%)	463 (98%)	6 (1%)	2 (0%)	34 24
1	B	469/475 (99%)	460 (98%)	7 (2%)	2 (0%)	34 24
1	C	470/475 (99%)	462 (98%)	6 (1%)	2 (0%)	34 24
1	D	470/475 (99%)	462 (98%)	6 (1%)	2 (0%)	34 24
All	All	1880/1900 (99%)	1847 (98%)	25 (1%)	8 (0%)	34 24

All (8) Ramachandran outliers are listed below:

Mol	Chain	Res	Type
1	A	276	THR
1	A	387	HIS
1	B	276	THR
1	B	387	HIS
1	C	276	THR
1	C	387	HIS
1	D	276	THR
1	D	387	HIS

### 5.3.2 Protein sidechains [i](#)

In the following table, the Percentiles column shows the percent sidechain outliers of the chain as a percentile score with respect to all X-ray entries followed by that with respect to entries of similar resolution.

The Analysed column shows the number of residues for which the sidechain conformation was analysed, and the total number of residues.

Mol	Chain	Analysed	Rotameric	Outliers	Percentiles	
1	A	381/381 (100%)	369 (97%)	12 (3%)	40	32
1	B	379/381 (100%)	374 (99%)	5 (1%)	69	68
1	C	380/381 (100%)	375 (99%)	5 (1%)	69	68
1	D	380/381 (100%)	372 (98%)	8 (2%)	53	48
All	All	1520/1524 (100%)	1490 (98%)	30 (2%)	55	51

All (30) residues with a non-rotameric sidechain are listed below:

Mol	Chain	Res	Type
1	A	19	ASP
1	A	106	SER
1	A	121	ARG
1	A	128	LYS
1	A	209	ILE
1	A	335	GLU
1	A	348	ARG
1	A	359	ARG
1	A	383	LEU
1	A	436	LEU
1	A	440	LYS
1	A	461	LEU
1	B	106	SER
1	B	209	ILE

*Continued on next page...*

*Continued from previous page...*

Mol	Chain	Res	Type
1	B	383	LEU
1	B	440	LYS
1	B	461	LEU
1	C	159	LEU
1	C	348	ARG
1	C	359	ARG
1	C	383	LEU
1	C	461	LEU
1	D	77	ARG
1	D	159	LEU
1	D	187	MET
1	D	335	GLU
1	D	359	ARG
1	D	383	LEU
1	D	440	LYS
1	D	461	LEU

Sometimes sidechains can be flipped to improve hydrogen bonding and reduce clashes. All (6) such sidechains are listed below:

Mol	Chain	Res	Type
1	A	404	GLN
1	B	404	GLN
1	B	463	HIS
1	C	404	GLN
1	D	154	ASN
1	D	404	GLN

### 5.3.3 RNA [i](#)

There are no RNA molecules in this entry.

### 5.4 Non-standard residues in protein, DNA, RNA chains [i](#)

There are no non-standard protein/DNA/RNA residues in this entry.

### 5.5 Carbohydrates [i](#)

There are no monosaccharides in this entry.

## 5.6 Ligand geometry

Of 25 ligands modelled in this entry, 9 are monoatomic - leaving 16 for Mogul analysis.

In the following table, the Counts columns list the number of bonds (or angles) for which Mogul statistics could be retrieved, the number of bonds (or angles) that are observed in the model and the number of bonds (or angles) that are defined in the Chemical Component Dictionary. The Link column lists molecule types, if any, to which the group is linked. The Z score for a bond length (or angle) is the number of standard deviations the observed value is removed from the expected value. A bond length (or angle) with  $|Z| > 2$  is considered an outlier worth inspection. RMSZ is the root-mean-square of all Z scores of the bond lengths (or angles).

Mol	Type	Chain	Res	Link	Bond lengths			Bond angles		
					Counts	RMSZ	# Z  > 2	Counts	RMSZ	# Z  > 2
4	AMP	C	504	-	22,25,25	0.95	1 (4%)	25,38,38	1.19	2 (8%)
3	OXL	D	503	2	5,5,5	1.58	1 (20%)	6,6,6	1.50	1 (16%)
6	ATP	C	505	2	26,33,33	0.99	3 (11%)	31,52,52	1.47	6 (19%)
7	PO4	C	506	-	4,4,4	0.78	0	6,6,6	0.35	0
3	OXL	C	503	2	5,5,5	1.71	1 (20%)	6,6,6	1.36	1 (16%)
4	AMP	D	504	-	22,25,25	0.88	1 (4%)	25,38,38	1.21	2 (8%)
4	AMP	B	503	-	22,25,25	0.97	1 (4%)	25,38,38	1.36	4 (16%)
7	PO4	A	506	-	4,4,4	0.61	0	6,6,6	0.42	0
4	AMP	A	503	-	22,25,25	0.85	1 (4%)	25,38,38	1.40	4 (16%)
3	OXL	B	502	2	5,5,5	1.68	1 (20%)	6,6,6	1.32	2 (33%)
7	PO4	B	506	-	4,4,4	0.73	0	6,6,6	0.21	0
3	OXL	A	502	2	5,5,5	1.63	1 (20%)	6,6,6	1.42	1 (16%)
6	ATP	D	506	2	26,33,33	1.03	3 (11%)	31,52,52	1.42	5 (16%)
7	PO4	D	507	-	4,4,4	0.94	0	6,6,6	0.49	0
6	ATP	B	505	-	26,33,33	0.94	0	31,52,52	1.58	4 (12%)
6	ATP	A	505	-	26,33,33	1.07	3 (11%)	31,52,52	1.24	4 (12%)

In the following table, the Chirals column lists the number of chiral outliers, the number of chiral centers analysed, the number of these observed in the model and the number defined in the Chemical Component Dictionary. Similar counts are reported in the Torsion and Rings columns. '-' means no outliers of that kind were identified.

Mol	Type	Chain	Res	Link	Chirals	Torsions	Rings
4	AMP	C	504	-	-	0/6/26/26	0/3/3/3
3	OXL	D	503	2	-	0/4/4/4	-
6	ATP	C	505	2	-	5/18/38/38	0/3/3/3
3	OXL	C	503	2	-	0/4/4/4	-
4	AMP	D	504	-	-	0/6/26/26	0/3/3/3

*Continued on next page...*

Continued from previous page...

Mol	Type	Chain	Res	Link	Chirals	Torsions	Rings
4	AMP	B	503	-	-	0/6/26/26	0/3/3/3
4	AMP	A	503	-	-	0/6/26/26	0/3/3/3
3	OXL	B	502	2	-	1/4/4/4	-
3	OXL	A	502	2	-	1/4/4/4	-
6	ATP	D	506	2	-	4/18/38/38	0/3/3/3
6	ATP	B	505	-	-	1/18/38/38	0/3/3/3
6	ATP	A	505	-	-	1/18/38/38	0/3/3/3

All (17) bond length outliers are listed below:

Mol	Chain	Res	Type	Atoms	Z	Observed(Å)	Ideal(Å)
6	D	506	ATP	O4'-C1'	2.57	1.44	1.41
3	D	503	OXL	C2-C1	-2.43	1.47	1.54
3	C	503	OXL	C2-C1	-2.42	1.47	1.54
6	A	505	ATP	C2-N3	2.41	1.36	1.32
3	B	502	OXL	C2-C1	-2.39	1.47	1.54
3	A	502	OXL	C2-C1	-2.35	1.47	1.54
6	C	505	ATP	C5-C4	2.32	1.47	1.40
6	D	506	ATP	C5-C4	2.31	1.47	1.40
6	A	505	ATP	O4'-C1'	2.24	1.44	1.41
4	B	503	AMP	C5-C4	2.23	1.46	1.40
6	A	505	ATP	C5-C4	2.21	1.46	1.40
6	C	505	ATP	C2-N3	2.20	1.35	1.32
6	C	505	ATP	O4'-C1'	2.20	1.44	1.41
6	D	506	ATP	C2-N3	2.19	1.35	1.32
4	A	503	AMP	C5-C4	2.19	1.46	1.40
4	C	504	AMP	O4'-C1'	2.05	1.43	1.41
4	D	504	AMP	O4'-C1'	2.04	1.43	1.41

All (36) bond angle outliers are listed below:

Mol	Chain	Res	Type	Atoms	Z	Observed(°)	Ideal(°)
6	B	505	ATP	PB-O3B-PG	-4.24	118.28	132.83
6	C	505	ATP	PB-O3B-PG	-4.08	118.83	132.83
6	B	505	ATP	N3-C2-N1	-3.99	122.45	128.68
6	A	505	ATP	N3-C2-N1	-3.82	122.71	128.68
6	B	505	ATP	PA-O3A-PB	-3.79	119.82	132.83
6	C	505	ATP	N3-C2-N1	-3.71	122.88	128.68
6	D	506	ATP	N3-C2-N1	-3.69	122.91	128.68
4	A	503	AMP	N3-C2-N1	-3.66	122.97	128.68
4	D	504	AMP	N3-C2-N1	-3.57	123.10	128.68
6	D	506	ATP	PB-O3B-PG	-3.50	120.82	132.83

Continued on next page...

*Continued from previous page...*

Mol	Chain	Res	Type	Atoms	Z	Observed(°)	Ideal(°)
4	C	504	AMP	N3-C2-N1	-3.39	123.39	128.68
4	B	503	AMP	N3-C2-N1	-3.26	123.58	128.68
4	B	503	AMP	C3'-C2'-C1'	3.04	105.56	100.98
4	A	503	AMP	C3'-C2'-C1'	2.81	105.21	100.98
4	B	503	AMP	C4-C5-N7	-2.75	106.53	109.40
3	D	503	OXL	O4-C2-C1	2.67	121.09	113.16
6	D	506	ATP	PA-O3A-PB	-2.58	123.98	132.83
6	A	505	ATP	C3'-C2'-C1'	2.56	104.83	100.98
6	B	505	ATP	C4-C5-N7	-2.54	106.75	109.40
3	C	503	OXL	O3-C1-C2	2.53	120.68	113.16
6	D	506	ATP	C3'-C2'-C1'	2.47	104.70	100.98
6	C	505	ATP	C4-C5-N7	-2.46	106.83	109.40
3	A	502	OXL	O4-C2-C1	2.42	120.36	113.16
6	C	505	ATP	PA-O3A-PB	-2.37	124.69	132.83
6	A	505	ATP	PB-O3B-PG	-2.36	124.72	132.83
6	D	506	ATP	C4-C5-N7	-2.35	106.95	109.40
4	A	503	AMP	C2-N1-C6	2.35	122.78	118.75
6	C	505	ATP	C3'-C2'-C1'	2.35	104.52	100.98
4	C	504	AMP	C3'-C2'-C1'	2.30	104.45	100.98
4	A	503	AMP	C4-C5-N7	-2.24	107.06	109.40
4	D	504	AMP	C3'-C2'-C1'	2.18	104.26	100.98
6	A	505	ATP	C4-C5-N7	-2.13	107.17	109.40
3	B	502	OXL	O3-C1-C2	2.09	119.36	113.16
4	B	503	AMP	C2-N1-C6	2.03	122.22	118.75
3	B	502	OXL	O4-C2-C1	2.01	119.14	113.16
6	C	505	ATP	C2-N1-C6	2.00	122.18	118.75

There are no chirality outliers.

All (13) torsion outliers are listed below:

Mol	Chain	Res	Type	Atoms
6	C	505	ATP	C5'-O5'-PA-O3A
6	D	506	ATP	C5'-O5'-PA-O1A
6	D	506	ATP	C5'-O5'-PA-O3A
6	A	505	ATP	PG-O3B-PB-O2B
6	C	505	ATP	C5'-O5'-PA-O2A
6	C	505	ATP	PG-O3B-PB-O2B
6	C	505	ATP	PB-O3A-PA-O1A
6	D	506	ATP	PG-O3B-PB-O1B
6	D	506	ATP	PB-O3A-PA-O2A
3	A	502	OXL	O3-C1-C2-O4
3	B	502	OXL	O1-C1-C2-O2

*Continued on next page...*

*Continued from previous page...*

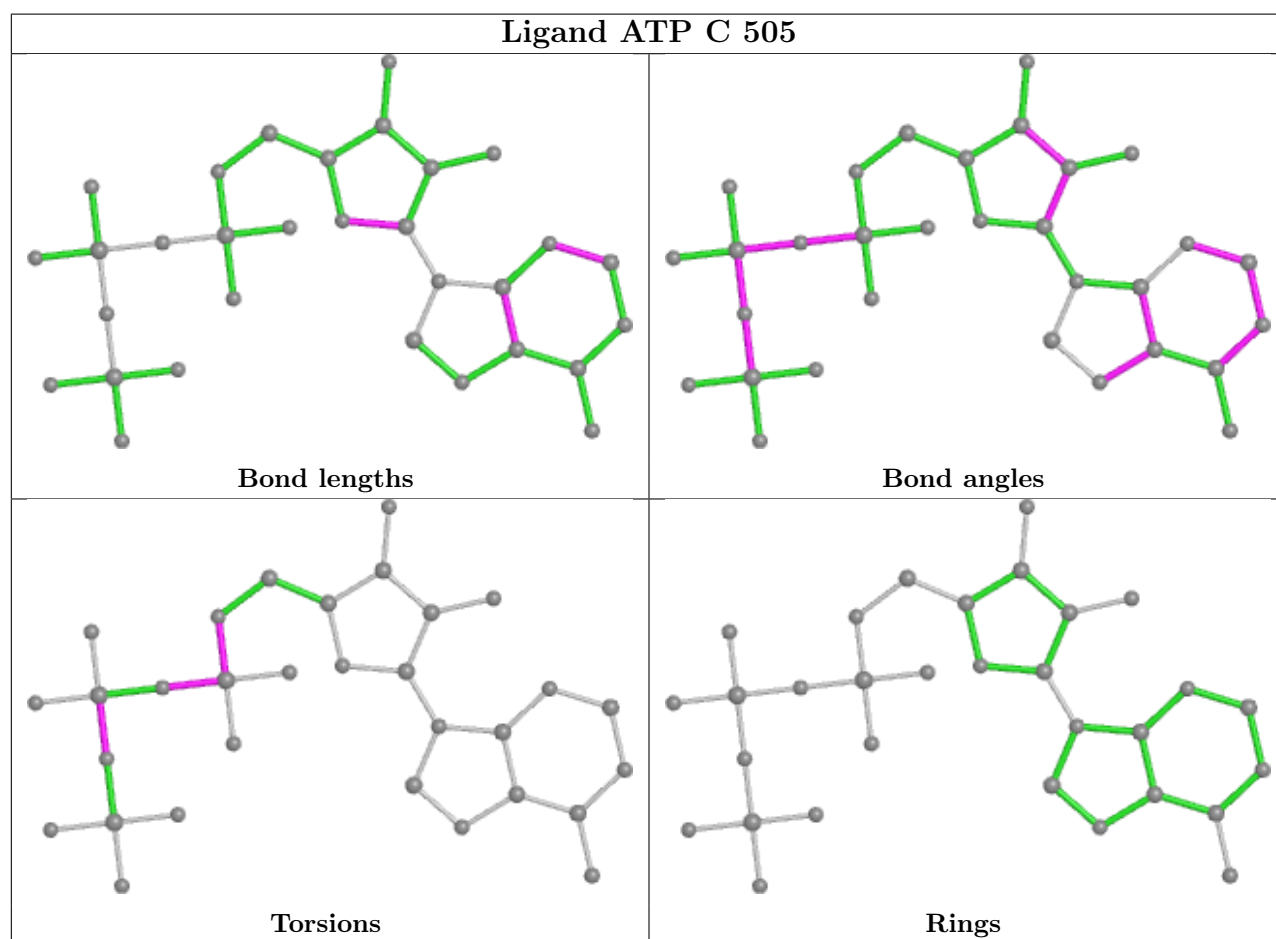
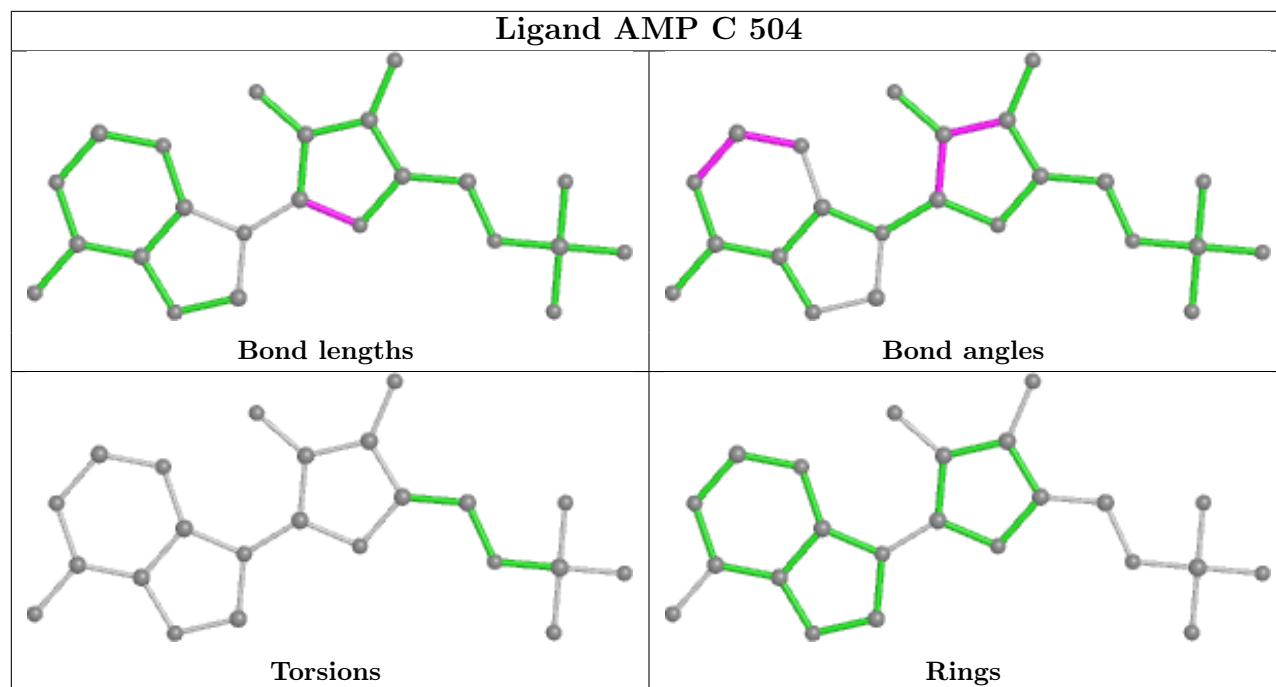
Mol	Chain	Res	Type	Atoms
6	B	505	ATP	PB-O3A-PA-O1A
6	C	505	ATP	PG-O3B-PB-O1B

There are no ring outliers.

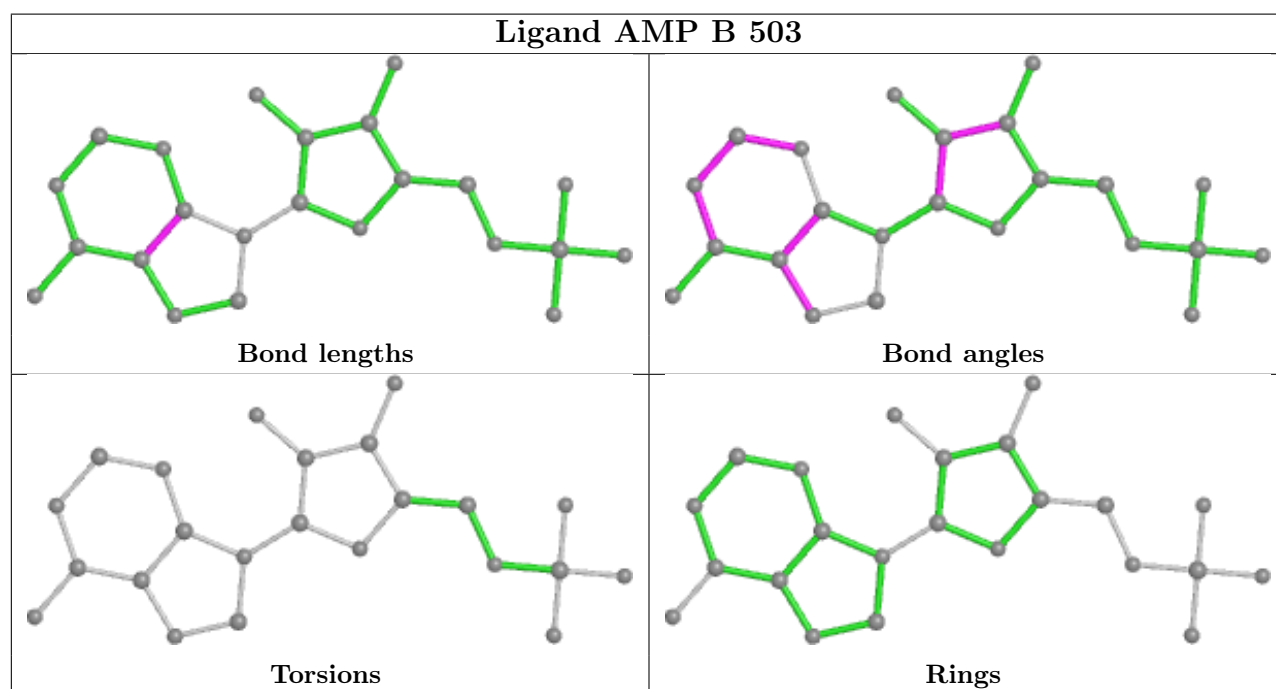
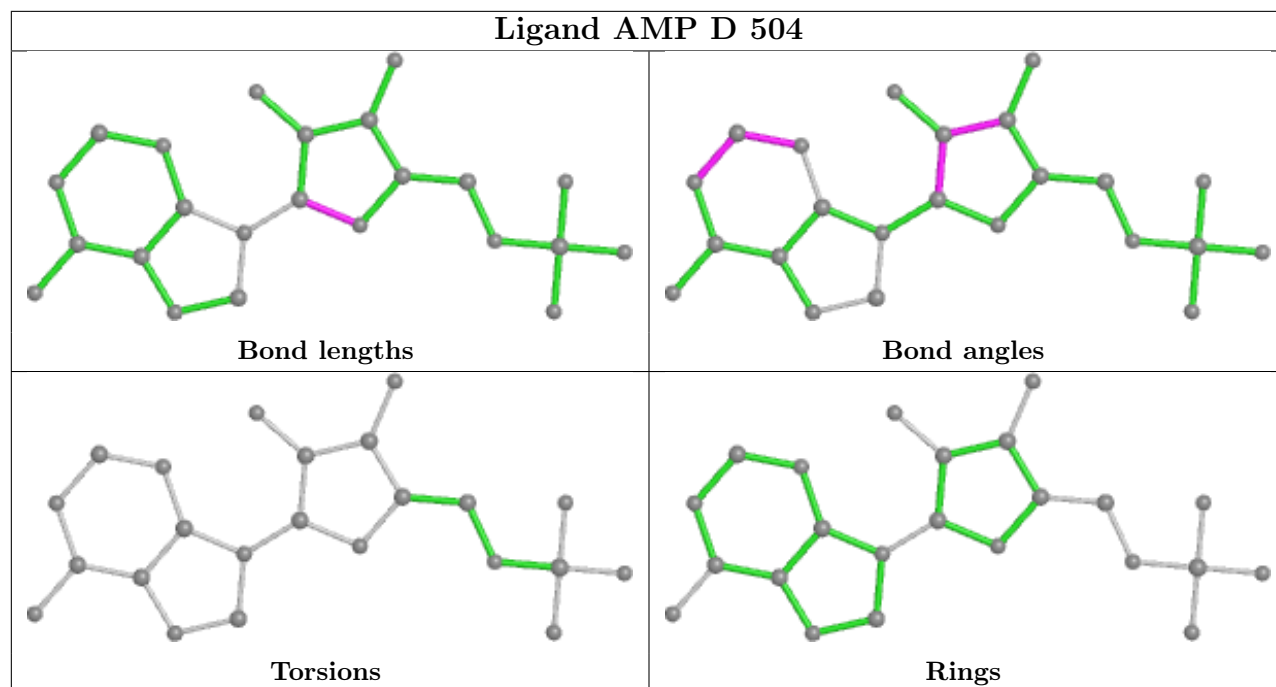
7 monomers are involved in 13 short contacts:

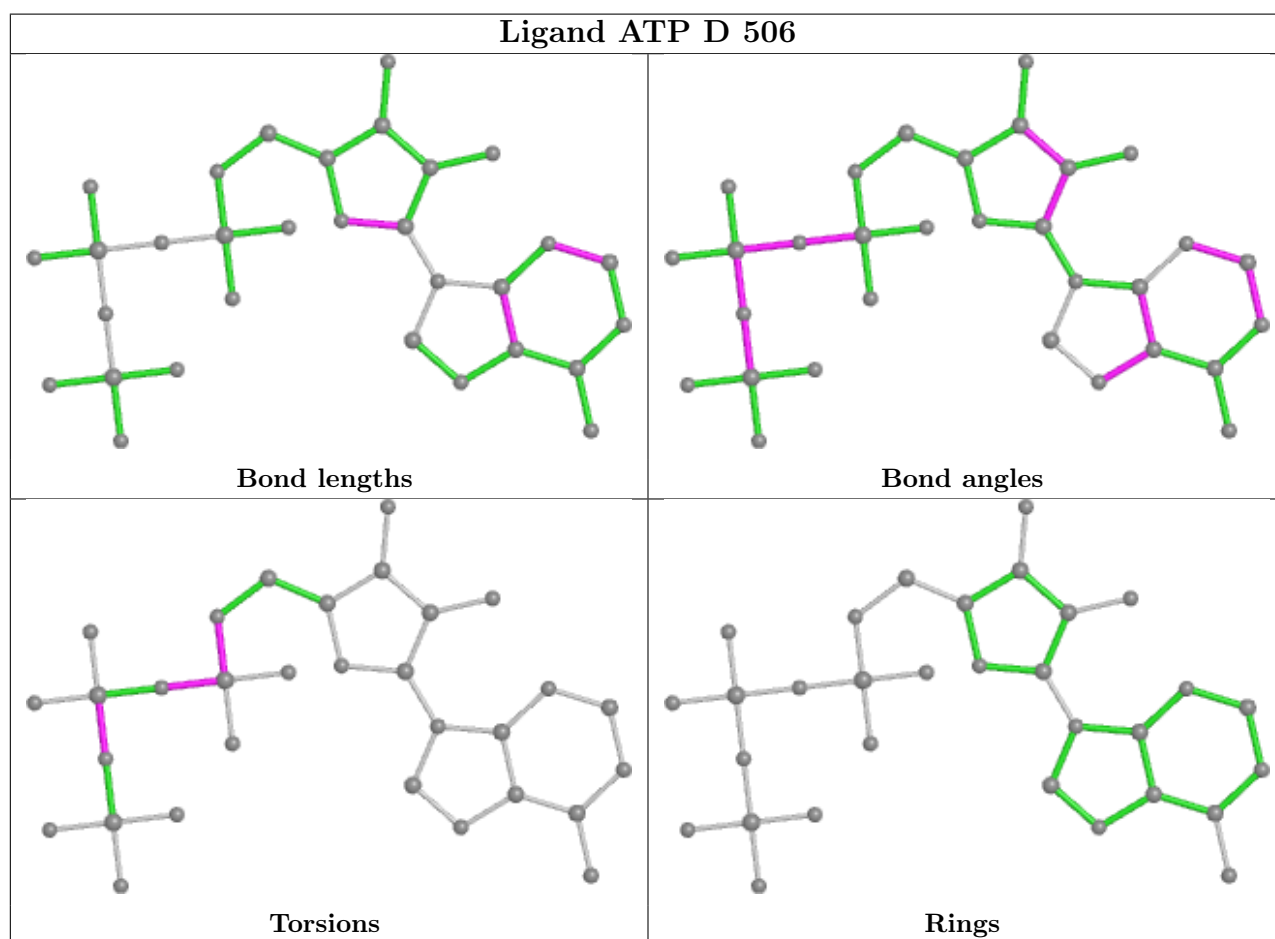
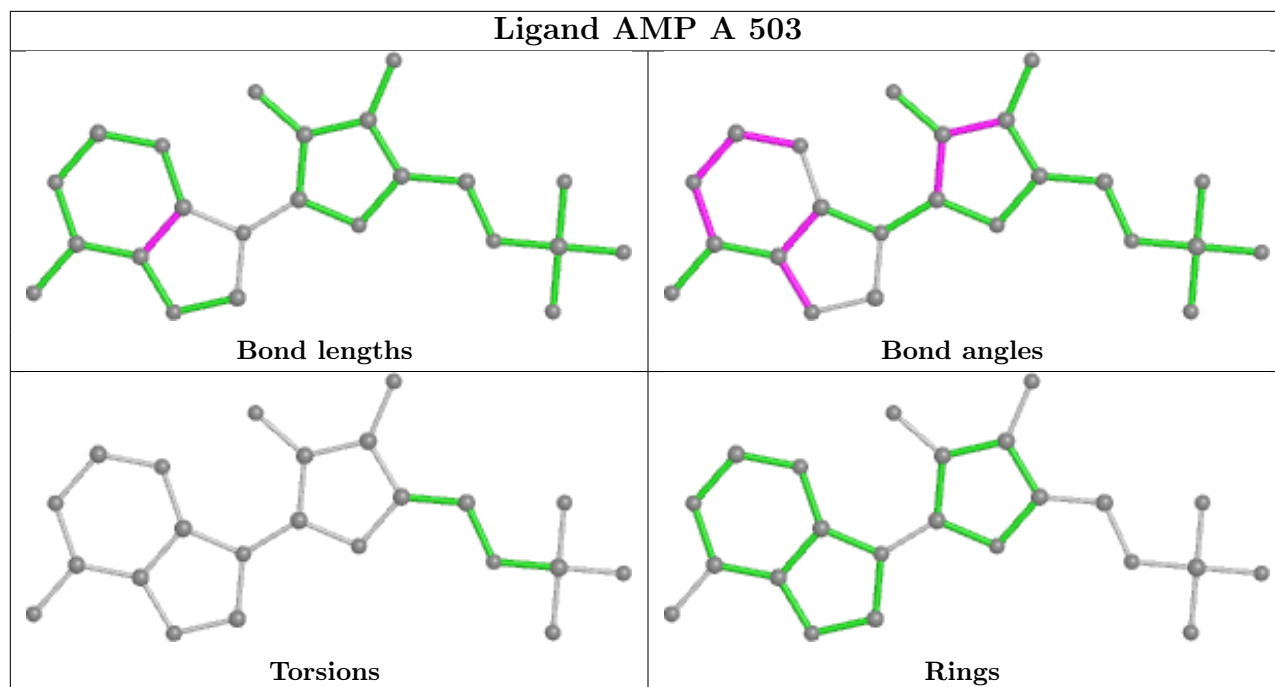
Mol	Chain	Res	Type	Clashes	Symm-Clashes
4	C	504	AMP	1	0
7	C	506	PO4	4	0
4	B	503	AMP	1	0
7	A	506	PO4	1	0
3	B	502	OXL	1	0
7	B	506	PO4	3	0
7	D	507	PO4	2	0

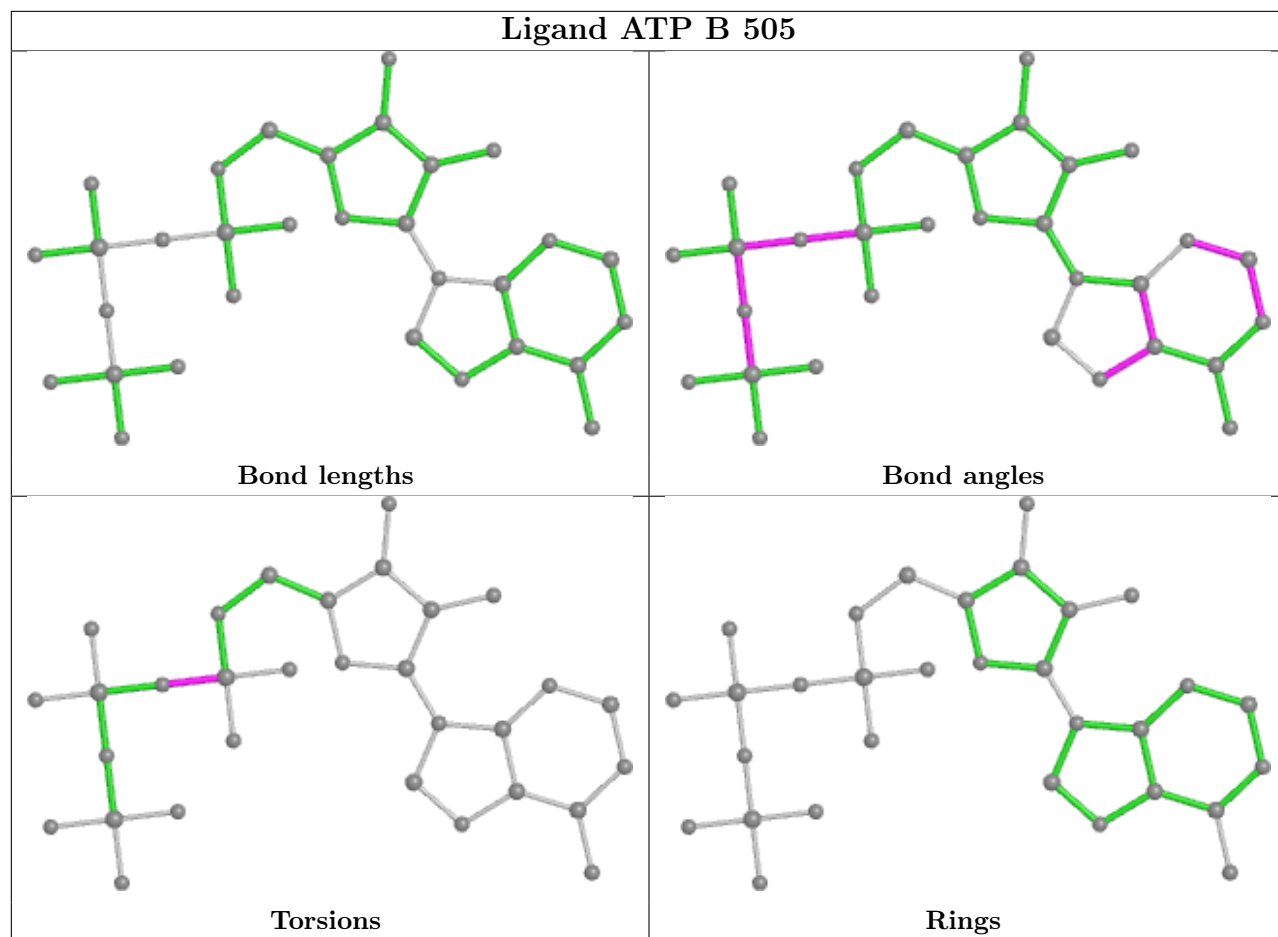
The following is a two-dimensional graphical depiction of Mogul quality analysis of bond lengths, bond angles, torsion angles, and ring geometry for all instances of the Ligand of Interest. In addition, ligands with molecular weight > 250 and outliers as shown on the validation Tables will also be included. For torsion angles, if less than 5% of the Mogul distribution of torsion angles is within 10 degrees of the torsion angle in question, then that torsion angle is considered an outlier. Any bond that is central to one or more torsion angles identified as an outlier by Mogul will be highlighted in the graph. For rings, the root-mean-square deviation (RMSD) between the ring in question and similar rings identified by Mogul is calculated over all ring torsion angles. If the average RMSD is greater than 60 degrees and the minimal RMSD between the ring in question and any Mogul-identified rings is also greater than 60 degrees, then that ring is considered an outlier. The outliers are highlighted in purple. The color gray indicates Mogul did not find sufficient equivalents in the CSD to analyse the geometry.

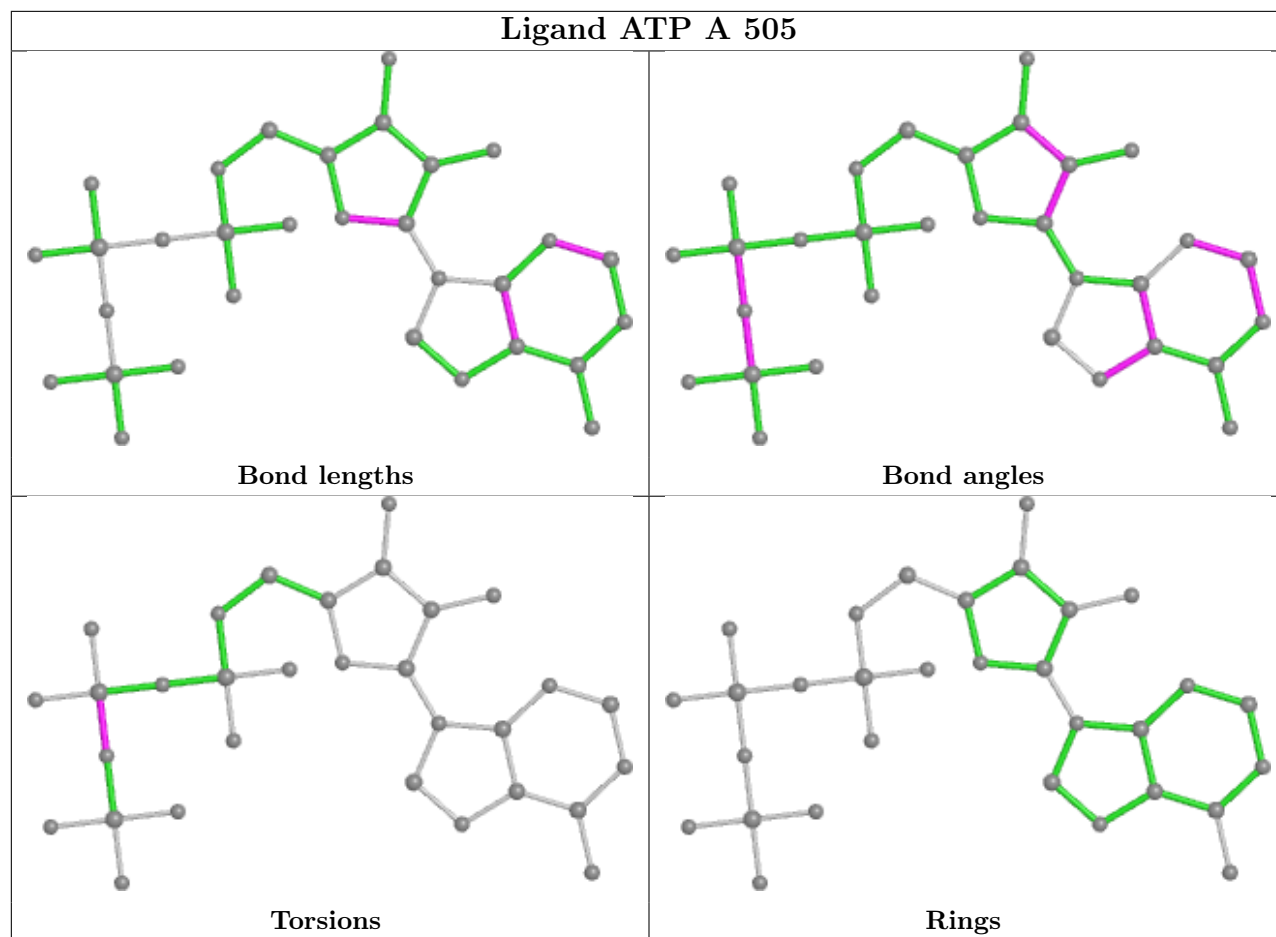












## 5.7 Other polymers [i](#)

There are no such residues in this entry.

## 5.8 Polymer linkage issues [i](#)

There are no chain breaks in this entry.

## 6 Fit of model and data [i](#)

### 6.1 Protein, DNA and RNA chains [i](#)

In the following table, the column labelled ‘#RSRZ > 2’ contains the number (and percentage) of RSRZ outliers, followed by percent RSRZ outliers for the chain as percentile scores relative to all X-ray entries and entries of similar resolution. The OWAB column contains the minimum, median, 95<sup>th</sup> percentile and maximum values of the occupancy-weighted average B-factor per residue. The column labelled ‘Q < 0.9’ lists the number of (and percentage) of residues with an average occupancy less than 0.9.

Mol	Chain	Analysed	<RSRZ>	#RSRZ>2	OWAB(Å <sup>2</sup> )	Q<0.9
1	A	471/475 (99%)	-0.42	1 (0%) 95 95	22, 32, 50, 68	0
1	B	471/475 (99%)	-0.40	2 (0%) 92 93	22, 31, 48, 68	0
1	C	471/475 (99%)	-0.30	4 (0%) 86 87	23, 36, 59, 81	0
1	D	471/475 (99%)	-0.31	7 (1%) 73 76	22, 36, 60, 81	0
All	All	1884/1900 (99%)	-0.36	14 (0%) 87 88	22, 33, 57, 81	0

All (14) RSRZ outliers are listed below:

Mol	Chain	Res	Type	RSRZ
1	D	79	ALA	3.0
1	D	112	LEU	2.8
1	C	99	GLU	2.8
1	C	112	LEU	2.7
1	C	79	ALA	2.6
1	B	437	ALA	2.6
1	B	346	ILE	2.5
1	D	81	GLY	2.4
1	C	161	GLY	2.2
1	D	161	GLY	2.2
1	A	346	ILE	2.1
1	D	346	ILE	2.1
1	D	149	GLY	2.1
1	D	116	ALA	2.0

### 6.2 Non-standard residues in protein, DNA, RNA chains [i](#)

There are no non-standard protein/DNA/RNA residues in this entry.

### 6.3 Carbohydrates [i](#)

There are no monosaccharides in this entry.

### 6.4 Ligands [i](#)

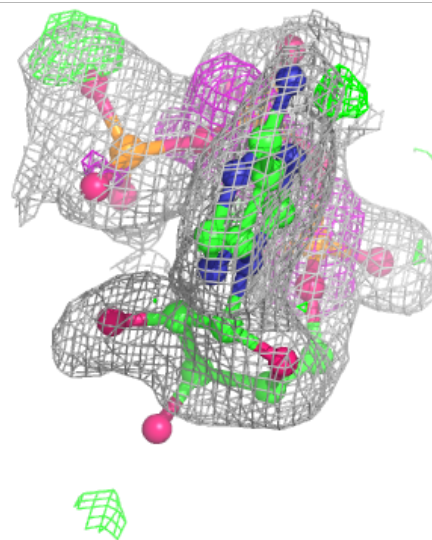
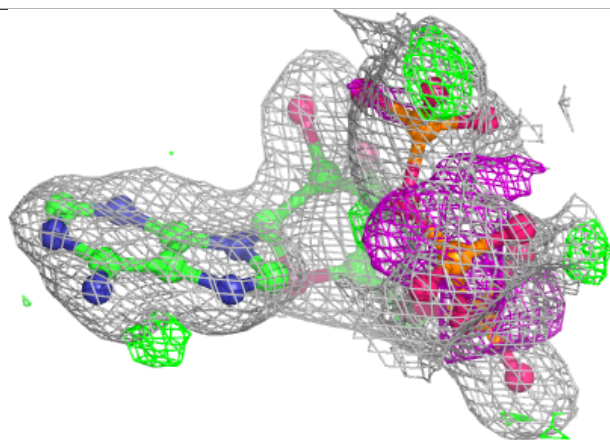
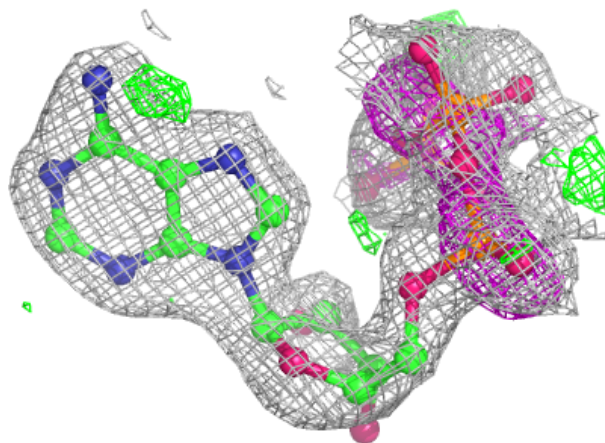
In the following table, the Atoms column lists the number of modelled atoms in the group and the number defined in the chemical component dictionary. The B-factors column lists the minimum, median, 95<sup>th</sup> percentile and maximum values of B factors of atoms in the group. The column labelled 'Q< 0.9' lists the number of atoms with occupancy less than 0.9.

Mol	Type	Chain	Res	Atoms	RSCC	RSR	B-factors(Å <sup>2</sup> )	Q<0.9
6	ATP	A	505	31/31	0.80	0.20	44,59,68,70	31
6	ATP	B	505	31/31	0.83	0.17	39,54,63,71	31
6	ATP	D	506	31/31	0.90	0.14	41,62,68,70	0
6	ATP	C	505	31/31	0.91	0.13	44,60,69,70	0
2	MG	C	502	1/1	0.92	0.05	71,71,71,71	0
2	MG	D	501	1/1	0.95	0.07	33,33,33,33	0
3	OXL	C	503	6/6	0.96	0.09	28,35,37,39	0
3	OXL	D	503	6/6	0.96	0.08	31,37,39,40	0
2	MG	D	502	1/1	0.96	0.06	69,69,69,69	0
3	OXL	A	502	6/6	0.97	0.08	27,30,35,35	0
3	OXL	B	502	6/6	0.97	0.08	29,30,36,39	0
7	PO4	D	507	5/5	0.97	0.41	45,65,83,90	0
4	AMP	C	504	23/23	0.98	0.09	24,29,32,33	0
4	AMP	D	504	23/23	0.98	0.09	25,31,33,35	0
5	K	B	504	1/1	0.98	0.07	59,59,59,59	0
5	K	D	505	1/1	0.98	0.06	66,66,66,66	0
2	MG	B	501	1/1	0.98	0.12	30,30,30,30	0
2	MG	C	501	1/1	0.98	0.07	30,30,30,30	0
2	MG	A	501	1/1	0.98	0.09	28,28,28,28	0
4	AMP	A	503	23/23	0.98	0.09	25,29,31,36	0
4	AMP	B	503	23/23	0.98	0.09	25,29,34,35	0
7	PO4	A	506	5/5	0.99	0.43	41,73,80,83	0
7	PO4	B	506	5/5	0.99	0.41	45,77,85,88	0
7	PO4	C	506	5/5	0.99	0.39	41,59,78,83	0
5	K	A	504	1/1	0.99	0.13	58,58,58,58	0

The following is a graphical depiction of the model fit to experimental electron density of all instances of the Ligand of Interest. In addition, ligands with molecular weight > 250 and outliers as shown on the geometry validation Tables will also be included. Each fit is shown from different orientation to approximate a three-dimensional view.

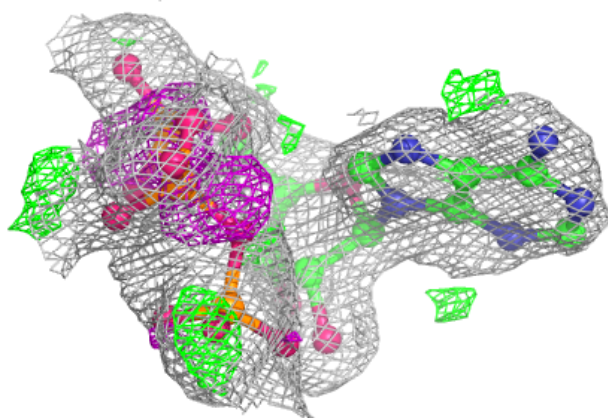
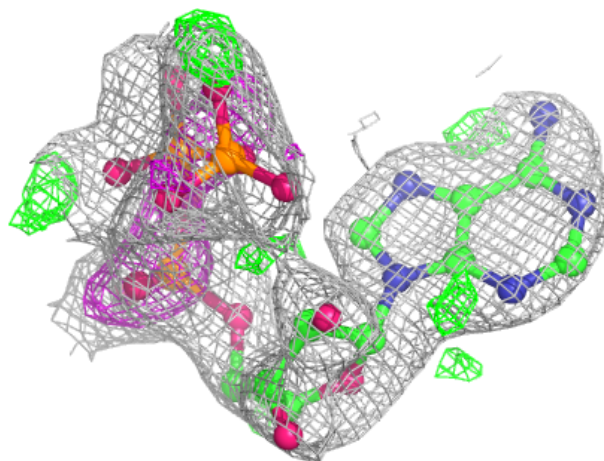
**Electron density around ATP A 505:**

$2mF_o-DF_c$  (at 0.7 rmsd) in gray  
 $mF_o-DF_c$  (at 3 rmsd) in purple (negative)  
and green (positive)



**Electron density around ATP B 505:**

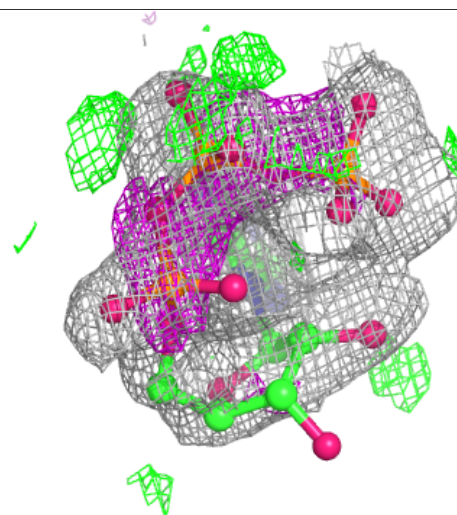
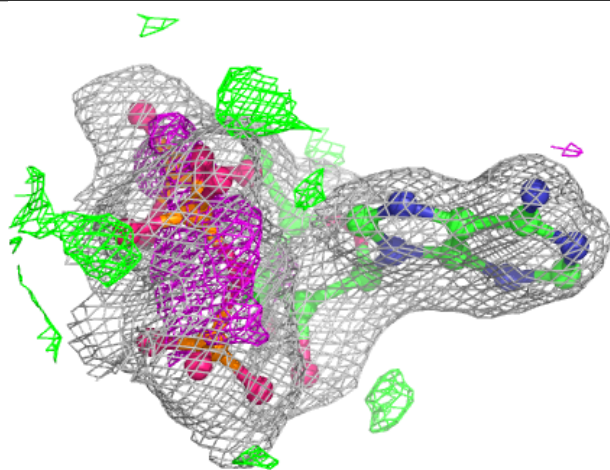
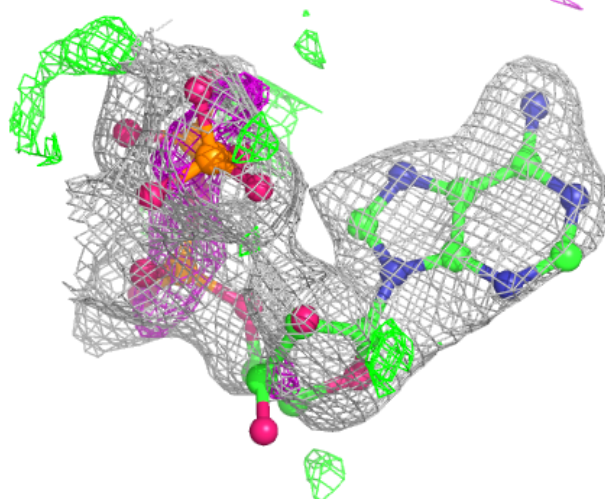
$2mF_o-DF_c$  (at 0.7 rmsd) in gray  
 $mF_o-DF_c$  (at 3 rmsd) in purple (negative)  
and green (positive)





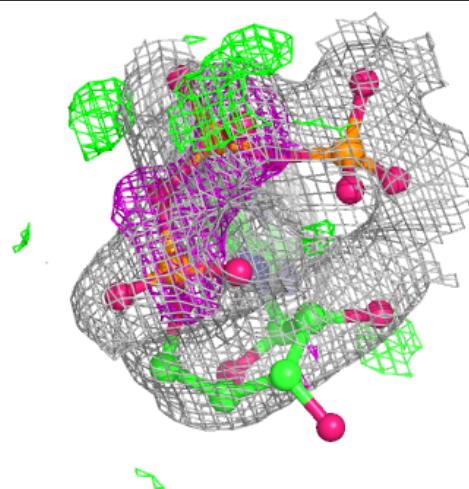
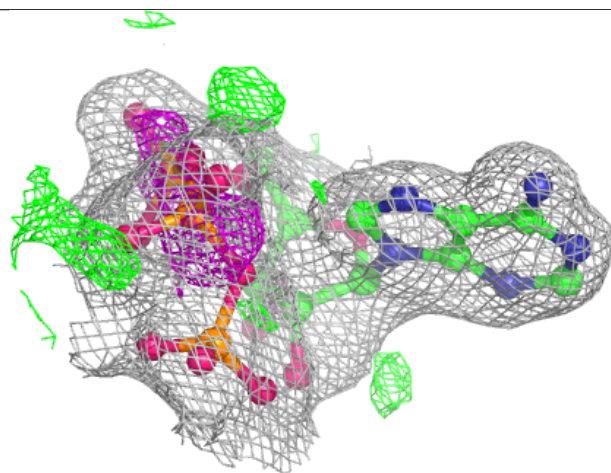
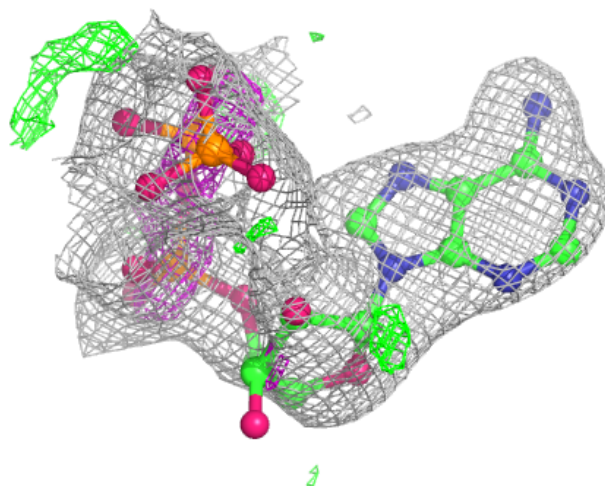
**Electron density around ATP D 506:**

$2mF_o-DF_c$  (at 0.7 rmsd) in gray  
 $mF_o-DF_c$  (at 3 rmsd) in purple (negative)  
and green (positive)



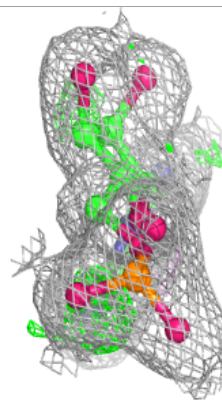
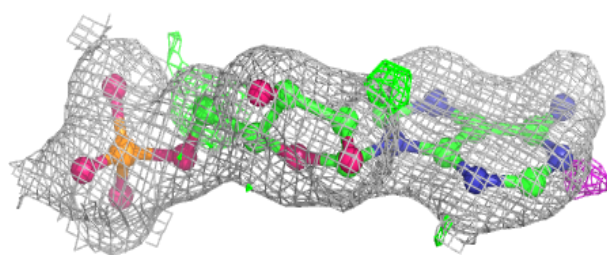
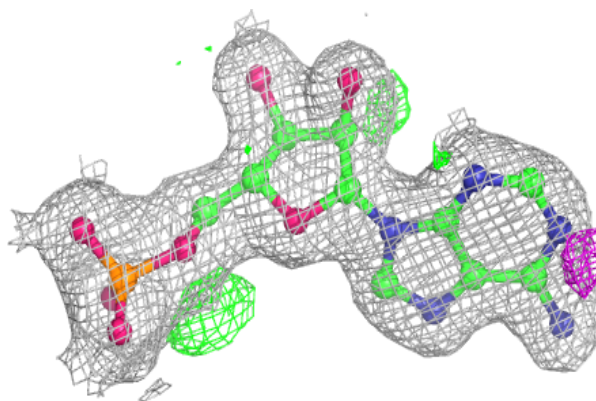
**Electron density around ATP C 505:**

$2mF_o-DF_c$  (at 0.7 rmsd) in gray  
 $mF_o-DF_c$  (at 3 rmsd) in purple (negative)  
and green (positive)

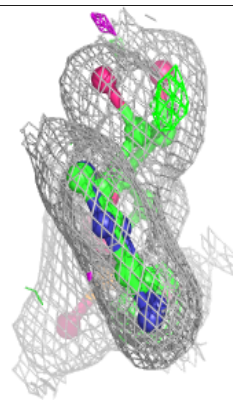
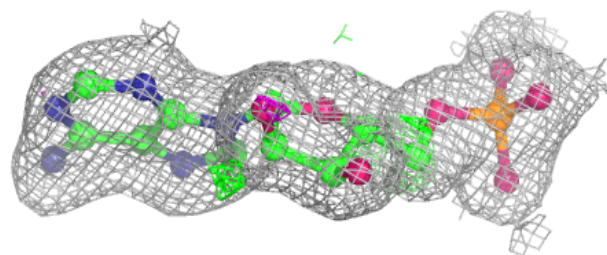
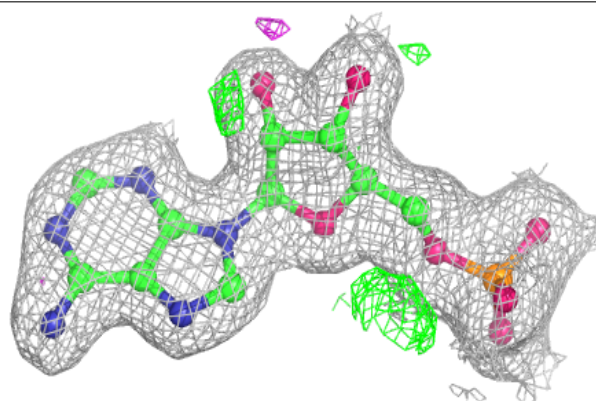


**Electron density around AMP C 504:**

$2mF_o-DF_c$  (at 0.7 rmsd) in gray  
 $mF_o-DF_c$  (at 3 rmsd) in purple (negative)  
and green (positive)

**Electron density around AMP D 504:**

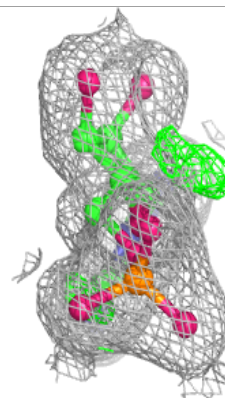
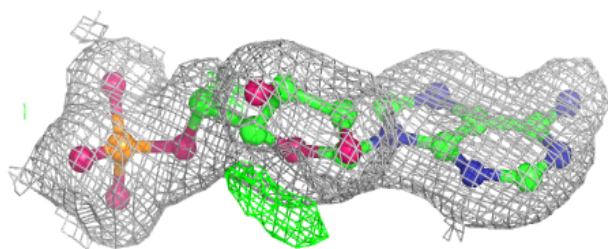
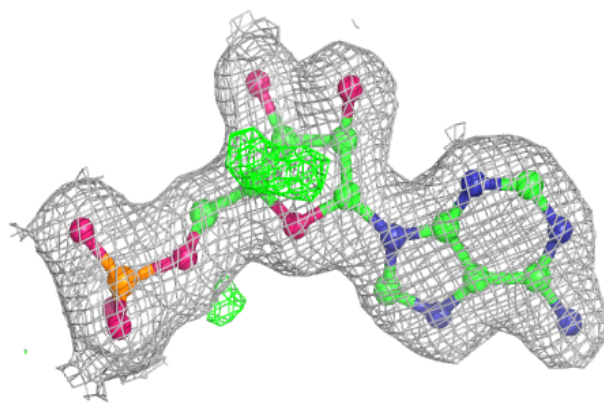
$2mF_o-DF_c$  (at 0.7 rmsd) in gray  
 $mF_o-DF_c$  (at 3 rmsd) in purple (negative)  
and green (positive)



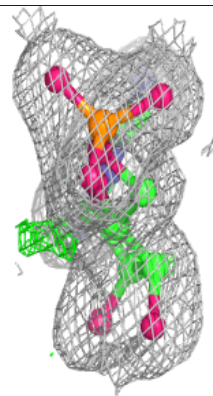
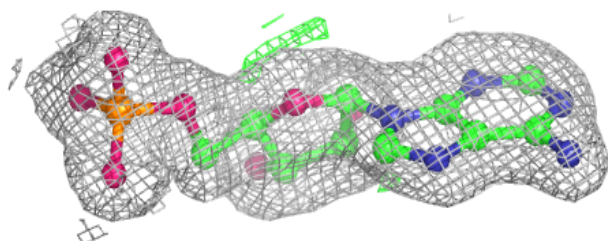
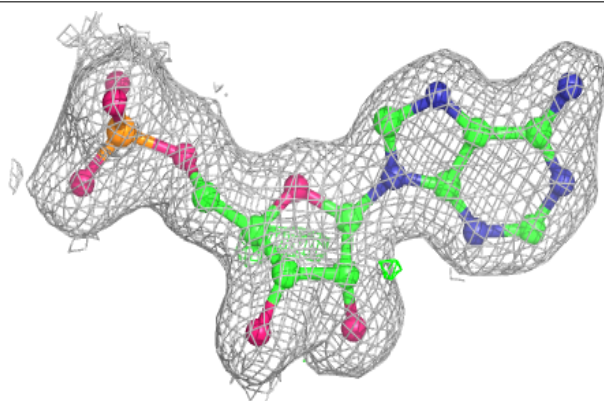


**Electron density around AMP A 503:**

$2mF_o-DF_c$  (at 0.7 rmsd) in gray  
 $mF_o-DF_c$  (at 3 rmsd) in purple (negative)  
and green (positive)

**Electron density around AMP B 503:**

$2mF_o-DF_c$  (at 0.7 rmsd) in gray  
 $mF_o-DF_c$  (at 3 rmsd) in purple (negative)  
and green (positive)



## 6.5 Other polymers [i](#)

There are no such residues in this entry.