



# Full wwPDB X-ray Structure Validation Report ⓘ

Nov 22, 2023 – 06:24 PM JST

PDB ID : 7WQQ  
Title : Retinoic acid receptor alpha mutant - N299H  
Authors : Huang, X.X.; Ng, L.M.; Teh, B.T.  
Deposited on : 2022-01-25  
Resolution : 1.90 Å(reported)

This is a Full wwPDB X-ray Structure Validation Report for a publicly released PDB entry.

We welcome your comments at [validation@mail.wwpdb.org](mailto:validation@mail.wwpdb.org)

A user guide is available at

<https://www.wwpdb.org/validation/2017/XrayValidationReportHelp>

with specific help available everywhere you see the ⓘ symbol.

The types of validation reports are described at

<http://www.wwpdb.org/validation/2017/FAQs#types>.

---

The following versions of software and data (see [references ⓘ](#)) were used in the production of this report:

MolProbity : 4.02b-467  
Mogul : 1.8.5 (274361), CSD as541be (2020)  
Xtriage (Phenix) : 1.13  
EDS : 2.36  
buster-report : 1.1.7 (2018)  
Percentile statistics : 20191225.v01 (using entries in the PDB archive December 25th 2019)  
Refmac : 5.8.0158  
CCP4 : 7.0.044 (Gargrove)  
Ideal geometry (proteins) : Engh & Huber (2001)  
Ideal geometry (DNA, RNA) : Parkinson et al. (1996)  
Validation Pipeline (wwPDB-VP) : 2.36

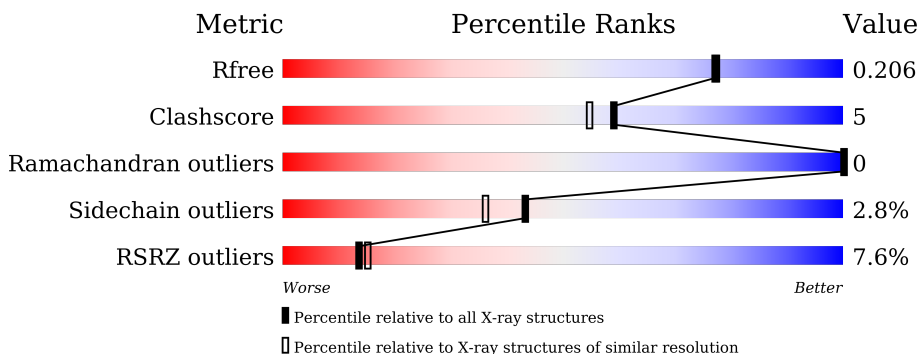
# 1 Overall quality at a glance

The following experimental techniques were used to determine the structure:

*X-RAY DIFFRACTION*

The reported resolution of this entry is 1.90 Å.

Percentile scores (ranging between 0-100) for global validation metrics of the entry are shown in the following graphic. The table shows the number of entries on which the scores are based.



Metric	Whole archive (#Entries)	Similar resolution (#Entries, resolution range(Å))
$R_{free}$	130704	6207 (1.90-1.90)
Clashscore	141614	6847 (1.90-1.90)
Ramachandran outliers	138981	6760 (1.90-1.90)
Sidechain outliers	138945	6760 (1.90-1.90)
RSRZ outliers	127900	6082 (1.90-1.90)

The table below summarises the geometric issues observed across the polymeric chains and their fit to the electron density. The red, orange, yellow and green segments of the lower bar indicate the fraction of residues that contain outliers for  $\geq 3$ , 2, 1 and 0 types of geometric quality criteria respectively. A grey segment represents the fraction of residues that are not modelled. The numeric value for each fraction is indicated below the corresponding segment, with a dot representing fractions  $\leq 5\%$ . The upper red bar (where present) indicates the fraction of residues that have poor fit to the electron density. The numeric value is given above the bar.

Mol	Chain	Length	Quality of chain
1	A	265	<p>5% (upper red bar), 74% (green), 11% (yellow), 14% (grey)</p>
2	C	13	<p>38% (red), 69% (green), 31% (grey)</p>

## 2 Entry composition [i](#)

There are 4 unique types of molecules in this entry. The entry contains 4059 atoms, of which 1999 are hydrogens and 0 are deuteriums.

In the tables below, the ZeroOcc column contains the number of atoms modelled with zero occupancy, the AltConf column contains the number of residues with at least one atom in alternate conformation and the Trace column contains the number of residues modelled with at most 2 atoms.

- Molecule 1 is a protein called Retinoic acid receptor alpha.

Mol	Chain	Residues	Atoms					ZeroOcc	AltConf	Trace	
			Total	C	H	N	O				S
1	A	228	3690	1155	1880	305	334	16	22	1	0

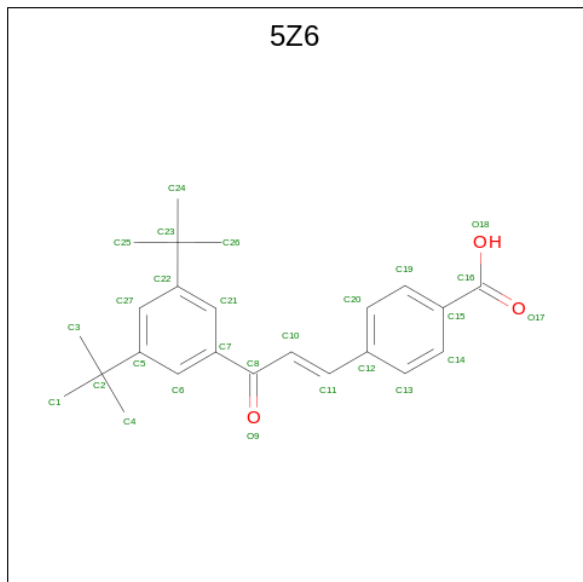
There are 20 discrepancies between the modelled and reference sequences:

Chain	Residue	Modelled	Actual	Comment	Reference
A	157	MET	-	initiating methionine	UNP P10276
A	158	LYS	-	expression tag	UNP P10276
A	159	SER	-	expression tag	UNP P10276
A	160	SER	-	expression tag	UNP P10276
A	161	HIS	-	expression tag	UNP P10276
A	162	HIS	-	expression tag	UNP P10276
A	163	HIS	-	expression tag	UNP P10276
A	164	HIS	-	expression tag	UNP P10276
A	165	HIS	-	expression tag	UNP P10276
A	166	HIS	-	expression tag	UNP P10276
A	167	GLU	-	expression tag	UNP P10276
A	168	ASN	-	expression tag	UNP P10276
A	169	LEU	-	expression tag	UNP P10276
A	170	TYR	-	expression tag	UNP P10276
A	171	PHE	-	expression tag	UNP P10276
A	172	GLN	-	expression tag	UNP P10276
A	173	SER	-	expression tag	UNP P10276
A	174	ASN	-	expression tag	UNP P10276
A	175	ALA	-	expression tag	UNP P10276
A	299	HIS	ASN	engineered mutation	UNP P10276

- Molecule 2 is a protein called Peptide from Nuclear receptor coactivator 1.

Mol	Chain	Residues	Atoms					ZeroOcc	AltConf	Trace
			Total	C	H	N	O			
2	C	9	173	53	92	18	10	0	0	0

- Molecule 3 is 4-[(E)-3-(3,5-ditert-butylphenyl)-3-oxidanylidene-prop-1-enyl]benzoic acid (three-letter code: 5Z6) (formula: C<sub>24</sub>H<sub>28</sub>O<sub>3</sub>) (labeled as "Ligand of Interest" by depositor).



Mol	Chain	Residues	Atoms				ZeroOcc	AltConf
			Total	C	H	O		
3	A	1	54	24	27	3	0	0

- Molecule 4 is water.

Mol	Chain	Residues	Atoms		ZeroOcc	AltConf
4	A	141	Total	O	0	0
			141	141		
4	C	1	Total	O	0	0
			1	1		



## 4 Data and refinement statistics

Property	Value	Source
Space group	C 1 2 1	Depositor
Cell constants a, b, c, $\alpha$ , $\beta$ , $\gamma$	88.92Å 64.98Å 49.20Å 90.00° 105.23° 90.00°	Depositor
Resolution (Å)	32.52 – 1.90 32.52 – 1.88	Depositor EDS
% Data completeness (in resolution range)	90.2 (32.52-1.90) 88.8 (32.52-1.88)	Depositor EDS
$R_{merge}$	0.08	Depositor
$R_{sym}$	(Not available)	Depositor
$\langle I/\sigma(I) \rangle$ <sup>1</sup>	1.51 (at 1.88Å)	Xtrriage
Refinement program	PHENIX 1.20_4459	Depositor
R, $R_{free}$	0.166 , 0.206 0.166 , 0.206	Depositor DCC
$R_{free}$ test set	2000 reflections (9.58%)	wwPDB-VP
Wilson B-factor (Å <sup>2</sup> )	25.1	Xtrriage
Anisotropy	0.320	Xtrriage
Bulk solvent $k_{sol}$ (e/Å <sup>3</sup> ), $B_{sol}$ (Å <sup>2</sup> )	0.45 , 54.7	EDS
L-test for twinning <sup>2</sup>	$\langle  L  \rangle = 0.48$ , $\langle L^2 \rangle = 0.32$	Xtrriage
Estimated twinning fraction	No twinning to report.	Xtrriage
$F_o, F_c$ correlation	0.96	EDS
Total number of atoms	4059	wwPDB-VP
Average B, all atoms (Å <sup>2</sup> )	38.0	wwPDB-VP

Xtrriage's analysis on translational NCS is as follows: *The largest off-origin peak in the Patterson function is 8.69% of the height of the origin peak. No significant pseudotranslation is detected.*

<sup>1</sup>Intensities estimated from amplitudes.

<sup>2</sup>Theoretical values of  $\langle |L| \rangle$ ,  $\langle L^2 \rangle$  for acentric reflections are 0.5, 0.333 respectively for untwinned datasets, and 0.375, 0.2 for perfectly twinned datasets.

## 5 Model quality [i](#)

### 5.1 Standard geometry [i](#)

Bond lengths and bond angles in the following residue types are not validated in this section: 5Z6

The Z score for a bond length (or angle) is the number of standard deviations the observed value is removed from the expected value. A bond length (or angle) with  $|Z| > 5$  is considered an outlier worth inspection. RMSZ is the root-mean-square of all Z scores of the bond lengths (or angles).

Mol	Chain	Bond lengths		Bond angles	
		RMSZ	# Z  >5	RMSZ	# Z  >5
1	A	0.58	0/1840	0.72	0/2486
2	C	0.38	0/82	0.63	0/108
All	All	0.57	0/1922	0.72	0/2594

There are no bond length outliers.

There are no bond angle outliers.

There are no chirality outliers.

There are no planarity outliers.

### 5.2 Too-close contacts [i](#)

In the following table, the Non-H and H(model) columns list the number of non-hydrogen atoms and hydrogen atoms in the chain respectively. The H(added) column lists the number of hydrogen atoms added and optimized by MolProbity. The Clashes column lists the number of clashes within the asymmetric unit, whereas Symm-Clashes lists symmetry-related clashes.

Mol	Chain	Non-H	H(model)	H(added)	Clashes	Symm-Clashes
1	A	1810	1880	1880	18	0
2	C	81	92	91	0	0
3	A	27	27	0	0	0
4	A	141	0	0	0	0
4	C	1	0	0	0	0
All	All	2060	1999	1971	18	0

The all-atom clashscore is defined as the number of clashes found per 1000 atoms (including hydrogen atoms). The all-atom clashscore for this structure is 5.

All (18) close contacts within the same asymmetric unit are listed below, sorted by their clash magnitude.

Atom-1	Atom-2	Interatomic distance (Å)	Clash overlap (Å)
1:A:187:LEU:C	1:A:187:LEU:HD23	2.20	0.61
1:A:187:LEU:HD23	1:A:187:LEU:O	2.09	0.52
1:A:181:THR:N	1:A:182:PRO:CD	2.74	0.51
1:A:240:VAL:O	1:A:244:LYS:HG3	2.12	0.50
1:A:189:GLU:OE1	1:A:192:ARG:NH1	2.45	0.50
1:A:360:LYS:O	1:A:364:ARG:HG2	2.14	0.47
1:A:344:GLN:OE1	1:A:347:ARG:NH2	2.49	0.46
1:A:409:LEU:O	1:A:413:MET:HG2	2.16	0.46
1:A:252:LEU:HD21	1:A:351:LEU:HD12	1.97	0.45
1:A:262:LYS:HE2	1:A:412:GLU:O	2.16	0.45
1:A:367:ARG:HG2	1:A:370:ARG:HD3	1.99	0.45
1:A:271:LEU:O	1:A:275:THR:HG23	2.17	0.44
1:A:350:MET:HE2	1:A:353:GLU:HG3	1.99	0.44
1:A:350:MET:HE2	1:A:353:GLU:CG	2.48	0.44
1:A:187:LEU:C	1:A:187:LEU:CD2	2.88	0.42
1:A:349:ASP:O	1:A:353:GLU:HG2	2.20	0.42
1:A:182:PRO:HG2	1:A:183:GLU:OE1	2.20	0.41
1:A:361:VAL:O	1:A:365:LYS:HG2	2.20	0.41

There are no symmetry-related clashes.

## 5.3 Torsion angles [i](#)

### 5.3.1 Protein backbone [i](#)

In the following table, the Percentiles column shows the percent Ramachandran outliers of the chain as a percentile score with respect to all X-ray entries followed by that with respect to entries of similar resolution.

The Analysed column shows the number of residues for which the backbone conformation was analysed, and the total number of residues.

Mol	Chain	Analysed	Favoured	Allowed	Outliers	Percentiles	
1	A	225/265 (85%)	221 (98%)	4 (2%)	0	100	100
2	C	7/13 (54%)	7 (100%)	0	0	100	100
All	All	232/278 (84%)	228 (98%)	4 (2%)	0	100	100

There are no Ramachandran outliers to report.



### 5.3.2 Protein sidechains [i](#)

In the following table, the Percentiles column shows the percent sidechain outliers of the chain as a percentile score with respect to all X-ray entries followed by that with respect to entries of similar resolution.

The Analysed column shows the number of residues for which the sidechain conformation was analysed, and the total number of residues.

Mol	Chain	Analysed	Rotameric	Outliers	Percentiles	
1	A	205/239 (86%)	199 (97%)	6 (3%)	42	35
2	C	9/12 (75%)	9 (100%)	0	100	100
All	All	214/251 (85%)	208 (97%)	6 (3%)	43	36

All (6) residues with a non-rotameric sidechain are listed below:

Mol	Chain	Res	Type
1	A	181	THR
1	A	190	LYS
1	A	223	ASP
1	A	336	CYS
1	A	367	ARG
1	A	405	SER

Sometimes sidechains can be flipped to improve hydrogen bonding and reduce clashes. All (1) such sidechains are listed below:

Mol	Chain	Res	Type
2	C	636	HIS

### 5.3.3 RNA [i](#)

There are no RNA molecules in this entry.

## 5.4 Non-standard residues in protein, DNA, RNA chains [i](#)

There are no non-standard protein/DNA/RNA residues in this entry.

## 5.5 Carbohydrates [i](#)

There are no monosaccharides in this entry.

## 5.6 Ligand geometry [i](#)

1 ligand is modelled in this entry.

In the following table, the Counts columns list the number of bonds (or angles) for which Mogul statistics could be retrieved, the number of bonds (or angles) that are observed in the model and the number of bonds (or angles) that are defined in the Chemical Component Dictionary. The Link column lists molecule types, if any, to which the group is linked. The Z score for a bond length (or angle) is the number of standard deviations the observed value is removed from the expected value. A bond length (or angle) with  $|Z| > 2$  is considered an outlier worth inspection. RMSZ is the root-mean-square of all Z scores of the bond lengths (or angles).

Mol	Type	Chain	Res	Link	Bond lengths			Bond angles		
					Counts	RMSZ	# Z  > 2	Counts	RMSZ	# Z  > 2
3	5Z6	A	501	-	28,28,28	1.69	4 (14%)	42,42,42	1.91	8 (19%)

In the following table, the Chirals column lists the number of chiral outliers, the number of chiral centers analysed, the number of these observed in the model and the number defined in the Chemical Component Dictionary. Similar counts are reported in the Torsion and Rings columns. '-' means no outliers of that kind were identified.

Mol	Type	Chain	Res	Link	Chirals	Torsions	Rings
3	5Z6	A	501	-	-	5/25/25/25	0/2/2/2

All (4) bond length outliers are listed below:

Mol	Chain	Res	Type	Atoms	Z	Observed(Å)	Ideal(Å)
3	A	501	5Z6	C10-C11	6.08	1.48	1.33
3	A	501	5Z6	C10-C8	3.10	1.52	1.47
3	A	501	5Z6	C12-C11	2.43	1.54	1.47
3	A	501	5Z6	O9-C8	-2.40	1.19	1.24

All (8) bond angle outliers are listed below:

Mol	Chain	Res	Type	Atoms	Z	Observed(°)	Ideal(°)
3	A	501	5Z6	C11-C10-C8	-8.16	108.32	121.64
3	A	501	5Z6	C12-C11-C10	-3.94	117.90	126.91
3	A	501	5Z6	C19-C15-C14	3.10	123.00	118.59
3	A	501	5Z6	C20-C12-C13	2.78	121.76	117.64
3	A	501	5Z6	C21-C22-C23	-2.52	116.69	121.38
3	A	501	5Z6	C25-C23-C22	-2.44	104.51	110.36
3	A	501	5Z6	C20-C19-C15	-2.31	118.09	120.78
3	A	501	5Z6	C26-C23-C24	2.02	114.90	108.32

There are no chirality outliers.

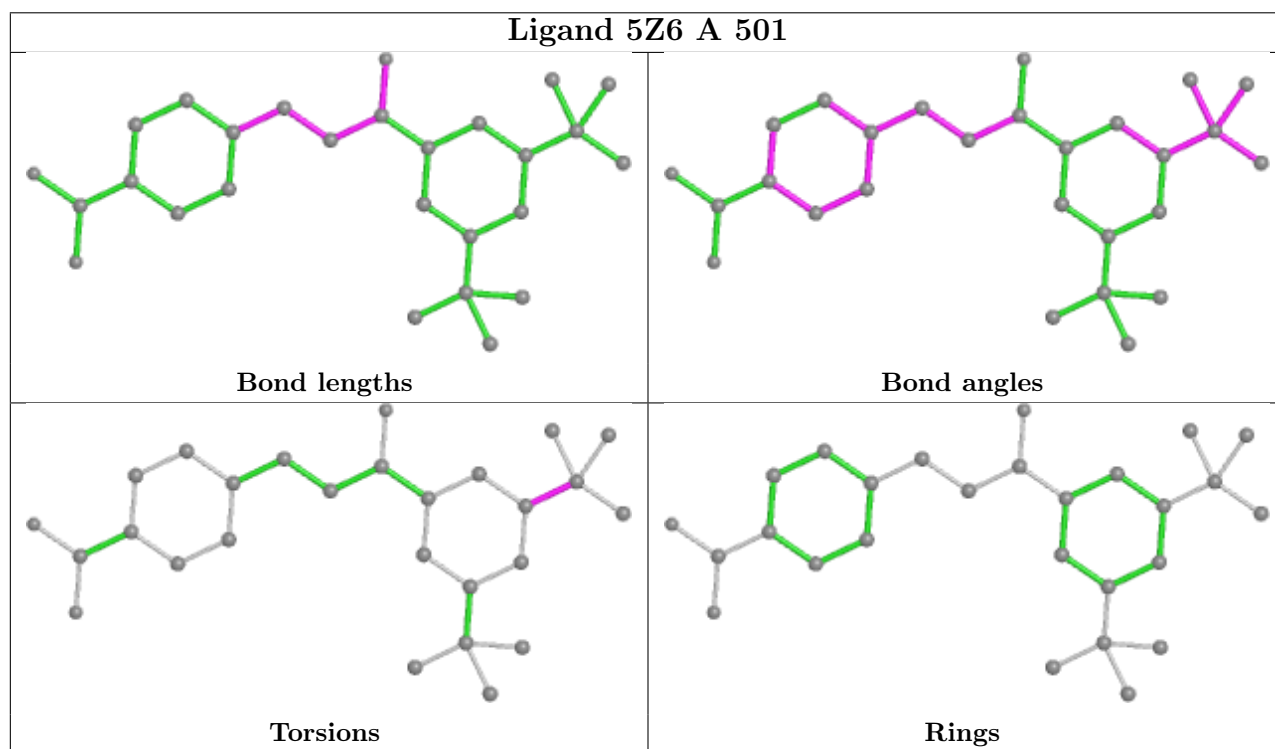
All (5) torsion outliers are listed below:

Mol	Chain	Res	Type	Atoms
3	A	501	5Z6	C27-C22-C23-C25
3	A	501	5Z6	C21-C22-C23-C25
3	A	501	5Z6	C21-C22-C23-C24
3	A	501	5Z6	C27-C22-C23-C24
3	A	501	5Z6	C27-C22-C23-C26

There are no ring outliers.

No monomer is involved in short contacts.

The following is a two-dimensional graphical depiction of Mogul quality analysis of bond lengths, bond angles, torsion angles, and ring geometry for all instances of the Ligand of Interest. In addition, ligands with molecular weight > 250 and outliers as shown on the validation Tables will also be included. For torsion angles, if less than 5% of the Mogul distribution of torsion angles is within 10 degrees of the torsion angle in question, then that torsion angle is considered an outlier. Any bond that is central to one or more torsion angles identified as an outlier by Mogul will be highlighted in the graph. For rings, the root-mean-square deviation (RMSD) between the ring in question and similar rings identified by Mogul is calculated over all ring torsion angles. If the average RMSD is greater than 60 degrees and the minimal RMSD between the ring in question and any Mogul-identified rings is also greater than 60 degrees, then that ring is considered an outlier. The outliers are highlighted in purple. The color gray indicates Mogul did not find sufficient equivalents in the CSD to analyse the geometry.



## 5.7 Other polymers [i](#)

There are no such residues in this entry.

## 5.8 Polymer linkage issues [i](#)

There are no chain breaks in this entry.

## 6 Fit of model and data [i](#)

### 6.1 Protein, DNA and RNA chains [i](#)

In the following table, the column labelled ‘#RSRZ > 2’ contains the number (and percentage) of RSRZ outliers, followed by percent RSRZ outliers for the chain as percentile scores relative to all X-ray entries and entries of similar resolution. The OWAB column contains the minimum, median, 95<sup>th</sup> percentile and maximum values of the occupancy-weighted average B-factor per residue. The column labelled ‘Q < 0.9’ lists the number of (and percentage) of residues with an average occupancy less than 0.9.

Mol	Chain	Analysed	<RSRZ>	#RSRZ>2	OWAB(Å <sup>2</sup> )	Q<0.9
1	A	228/265 (86%)	0.10	13 (5%) 23 26	19, 30, 63, 87	0
2	C	9/13 (69%)	1.95	5 (55%) 0 0	40, 46, 72, 76	0
All	All	237/278 (85%)	0.17	18 (7%) 13 15	19, 31, 64, 87	0

All (18) RSRZ outliers are listed below:

Mol	Chain	Res	Type	RSRZ
1	A	369	SER	4.4
1	A	181	THR	4.4
2	C	640	GLN	4.2
1	A	182	PRO	4.2
1	A	364	ARG	4.0
1	A	184	VAL	3.7
1	A	370	ARG	3.7
2	C	637	ARG	3.5
1	A	367	ARG	2.9
1	A	365	LYS	2.8
2	C	632	HIS	2.6
1	A	371	PRO	2.5
1	A	183	GLU	2.5
1	A	403	PRO	2.4
2	C	633	LYS	2.3
2	C	636	HIS	2.3
1	A	372	HIS	2.1
1	A	368	PRO	2.0

### 6.2 Non-standard residues in protein, DNA, RNA chains [i](#)

There are no non-standard protein/DNA/RNA residues in this entry.

### 6.3 Carbohydrates [i](#)

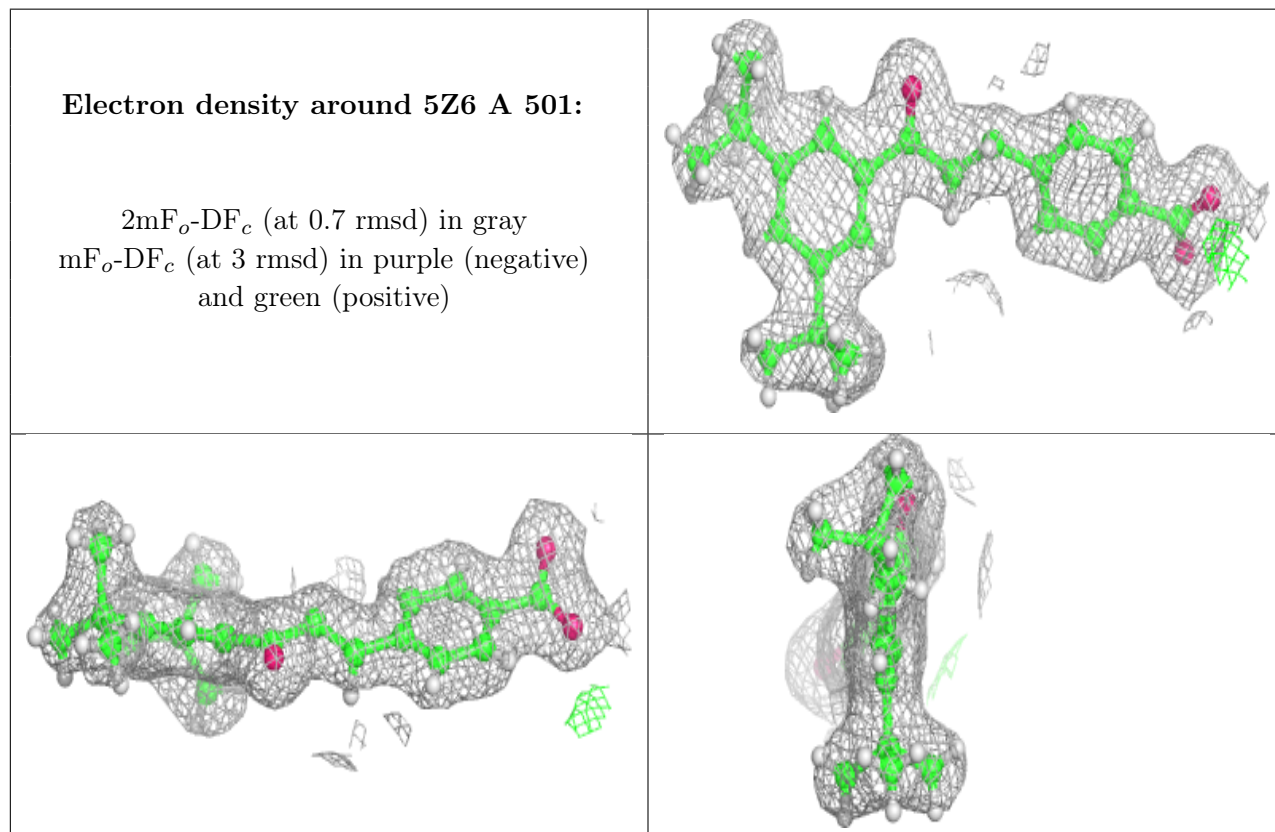
There are no monosaccharides in this entry.

### 6.4 Ligands [i](#)

In the following table, the Atoms column lists the number of modelled atoms in the group and the number defined in the chemical component dictionary. The B-factors column lists the minimum, median, 95<sup>th</sup> percentile and maximum values of B factors of atoms in the group. The column labelled 'Q< 0.9' lists the number of atoms with occupancy less than 0.9.

Mol	Type	Chain	Res	Atoms	RSCC	RSR	B-factors(Å <sup>2</sup> )	Q<0.9
3	5Z6	A	501	27/27	0.97	0.12	15,25,33,40	0

The following is a graphical depiction of the model fit to experimental electron density of all instances of the Ligand of Interest. In addition, ligands with molecular weight > 250 and outliers as shown on the geometry validation Tables will also be included. Each fit is shown from different orientation to approximate a three-dimensional view.



### 6.5 Other polymers [i](#)

There are no such residues in this entry.