



Full wwPDB EM Validation Report ⓘ

Nov 29, 2022 – 01:07 PM JST

PDB ID : 7WG8
EMDB ID : EMD-32480
Title : Delta Spike Trimer(3 RBD Down)
Authors : Cui, Z.
Deposited on : 2021-12-28
Resolution : 3.90 Å(reported)

This is a Full wwPDB EM Validation Report for a publicly released PDB entry.

We welcome your comments at validation@mail.wwpdb.org

A user guide is available at

<https://www.wwpdb.org/validation/2017/EMValidationReportHelp>

with specific help available everywhere you see the ⓘ symbol.

The types of validation reports are described at

<http://www.wwpdb.org/validation/2017/FAQs#types>.

The following versions of software and data (see [references ⓘ](#)) were used in the production of this report:

EMDB validation analysis : 0.0.1.dev43
Mogul : 1.8.5 (274361), CSD as541be (2020)
MolProbity : 4.02b-467
Percentile statistics : 20191225.v01 (using entries in the PDB archive December 25th 2019)
MapQ : 1.9.9
Ideal geometry (proteins) : Engh & Huber (2001)
Ideal geometry (DNA, RNA) : Parkinson et al. (1996)
Validation Pipeline (wwPDB-VP) : 2.31.3

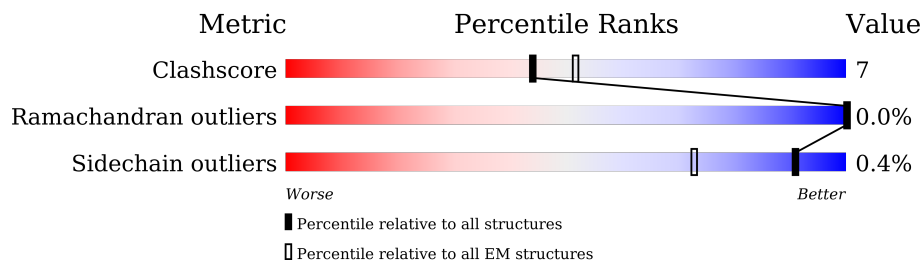
1 Overall quality at a glance i

The following experimental techniques were used to determine the structure:

ELECTRON MICROSCOPY

The reported resolution of this entry is 3.90 Å.

Percentile scores (ranging between 0-100) for global validation metrics of the entry are shown in the following graphic. The table shows the number of entries on which the scores are based.




Metric	Whole archive (#Entries)	EM structures (#Entries)
Clashscore	158937	4297
Ramachandran outliers	154571	4023
Sidechain outliers	154315	3826

The table below summarises the geometric issues observed across the polymeric chains and their fit to the map. The red, orange, yellow and green segments of the bar indicate the fraction of residues that contain outliers for ≥ 3 , 2, 1 and 0 types of geometric quality criteria respectively. A grey segment represents the fraction of residues that are not modelled. The numeric value for each fraction is indicated below the corresponding segment, with a dot representing fractions $\leq 5\%$. The upper red bar (where present) indicates the fraction of residues that have poor fit to the EM map (all-atom inclusion $< 40\%$). The numeric value is given above the bar.

Mol	Chain	Length	Quality of chain
1	A	1133	
1	B	1133	
1	C	1133	
2	D	2	
2	E	2	
2	F	2	
2	G	2	
2	H	2	

Continued on next page...

Continued from previous page...

Mol	Chain	Length	Quality of chain
2	I	2	 100%

2 Entry composition i

There are 3 unique types of molecules in this entry. The entry contains 25629 atoms, of which 0 are hydrogens and 0 are deuteriums.

In the tables below, the AltConf column contains the number of residues with at least one atom in alternate conformation and the Trace column contains the number of residues modelled with at most 2 atoms.

- Molecule 1 is a protein called Spike glycoprotein.

Mol	Chain	Residues	Atoms					AltConf	Trace
			Total	C	N	O	S		
1	B	1063	8305	5300	1389	1577	39	0	0
1	A	1063	8305	5300	1389	1577	39	0	0
1	C	1063	8305	5300	1389	1577	39	0	0

There are 30 discrepancies between the modelled and reference sequences:

Chain	Residue	Modelled	Actual	Comment	Reference
B	19	ARG	THR	variant	UNP P0DTC2
B	156	GLY	GLU	variant	UNP P0DTC2
B	?	-	PHE	deletion	UNP P0DTC2
B	450	ARG	LEU	variant	UNP P0DTC2
B	476	LYS	THR	variant	UNP P0DTC2
B	612	GLY	ASP	variant	UNP P0DTC2
B	679	ARG	PRO	variant	UNP P0DTC2
B	948	ASN	ASP	variant	UNP P0DTC2
B	984	PRO	LYS	variant	UNP P0DTC2
B	985	PRO	VAL	variant	UNP P0DTC2
A	19	ARG	THR	variant	UNP P0DTC2
A	156	GLY	GLU	variant	UNP P0DTC2
A	?	-	PHE	deletion	UNP P0DTC2
A	450	ARG	LEU	variant	UNP P0DTC2
A	476	LYS	THR	variant	UNP P0DTC2
A	612	GLY	ASP	variant	UNP P0DTC2
A	679	ARG	PRO	variant	UNP P0DTC2
A	948	ASN	ASP	variant	UNP P0DTC2
A	984	PRO	LYS	variant	UNP P0DTC2
A	985	PRO	VAL	variant	UNP P0DTC2
C	19	ARG	THR	variant	UNP P0DTC2
C	156	GLY	GLU	variant	UNP P0DTC2
C	?	-	PHE	deletion	UNP P0DTC2
C	450	ARG	LEU	variant	UNP P0DTC2

Continued on next page...

Continued from previous page...

Chain	Residue	Modelled	Actual	Comment	Reference
C	476	LYS	THR	variant	UNP P0DTC2
C	612	GLY	ASP	variant	UNP P0DTC2
C	679	ARG	PRO	variant	UNP P0DTC2
C	948	ASN	ASP	variant	UNP P0DTC2
C	984	PRO	LYS	variant	UNP P0DTC2
C	985	PRO	VAL	variant	UNP P0DTC2

- Molecule 2 is an oligosaccharide called 2-acetamido-2-deoxy-beta-D-glucopyranose-(1-4)-2-acetamido-2-deoxy-beta-D-glucopyranose.



Mol	Chain	Residues	Atoms				AltConf	Trace
			Total	C	N	O		
2	D	2	28	16	2	10	0	0
2	E	2	28	16	2	10	0	0
2	F	2	28	16	2	10	0	0
2	G	2	28	16	2	10	0	0
2	H	2	28	16	2	10	0	0
2	I	2	28	16	2	10	0	0

- Molecule 3 is 2-acetamido-2-deoxy-beta-D-glucopyranose (three-letter code: NAG) (formula: C₈H₁₅NO₆).



Mol	Chain	Residues	Atoms				AltConf
			Total	C	N	O	
3	B	1	Total	C	N	O	0
			182	104	13	65	
3	B	1	Total	C	N	O	0
			182	104	13	65	
3	B	1	Total	C	N	O	0
			182	104	13	65	
3	B	1	Total	C	N	O	0
			182	104	13	65	
3	B	1	Total	C	N	O	0
			182	104	13	65	
3	B	1	Total	C	N	O	0
			182	104	13	65	
3	B	1	Total	C	N	O	0
			182	104	13	65	
3	B	1	Total	C	N	O	0
			182	104	13	65	
3	B	1	Total	C	N	O	0
			182	104	13	65	
3	B	1	Total	C	N	O	0
			182	104	13	65	
3	A	1	Total	C	N	O	0
			182	104	13	65	

Continued on next page...

Continued from previous page...

Mol	Chain	Residues	Atoms				AltConf
			Total	C	N	O	
3	A	1	182	104	13	65	0
3	A	1	182	104	13	65	0
3	A	1	182	104	13	65	0
3	A	1	182	104	13	65	0
3	A	1	182	104	13	65	0
3	A	1	182	104	13	65	0
3	A	1	182	104	13	65	0
3	A	1	182	104	13	65	0
3	A	1	182	104	13	65	0
3	A	1	182	104	13	65	0
3	A	1	182	104	13	65	0
3	A	1	182	104	13	65	0
3	A	1	182	104	13	65	0
3	A	1	182	104	13	65	0
3	C	1	182	104	13	65	0
3	C	1	182	104	13	65	0
3	C	1	182	104	13	65	0
3	C	1	182	104	13	65	0
3	C	1	182	104	13	65	0
3	C	1	182	104	13	65	0
3	C	1	182	104	13	65	0
3	C	1	182	104	13	65	0
3	C	1	182	104	13	65	0

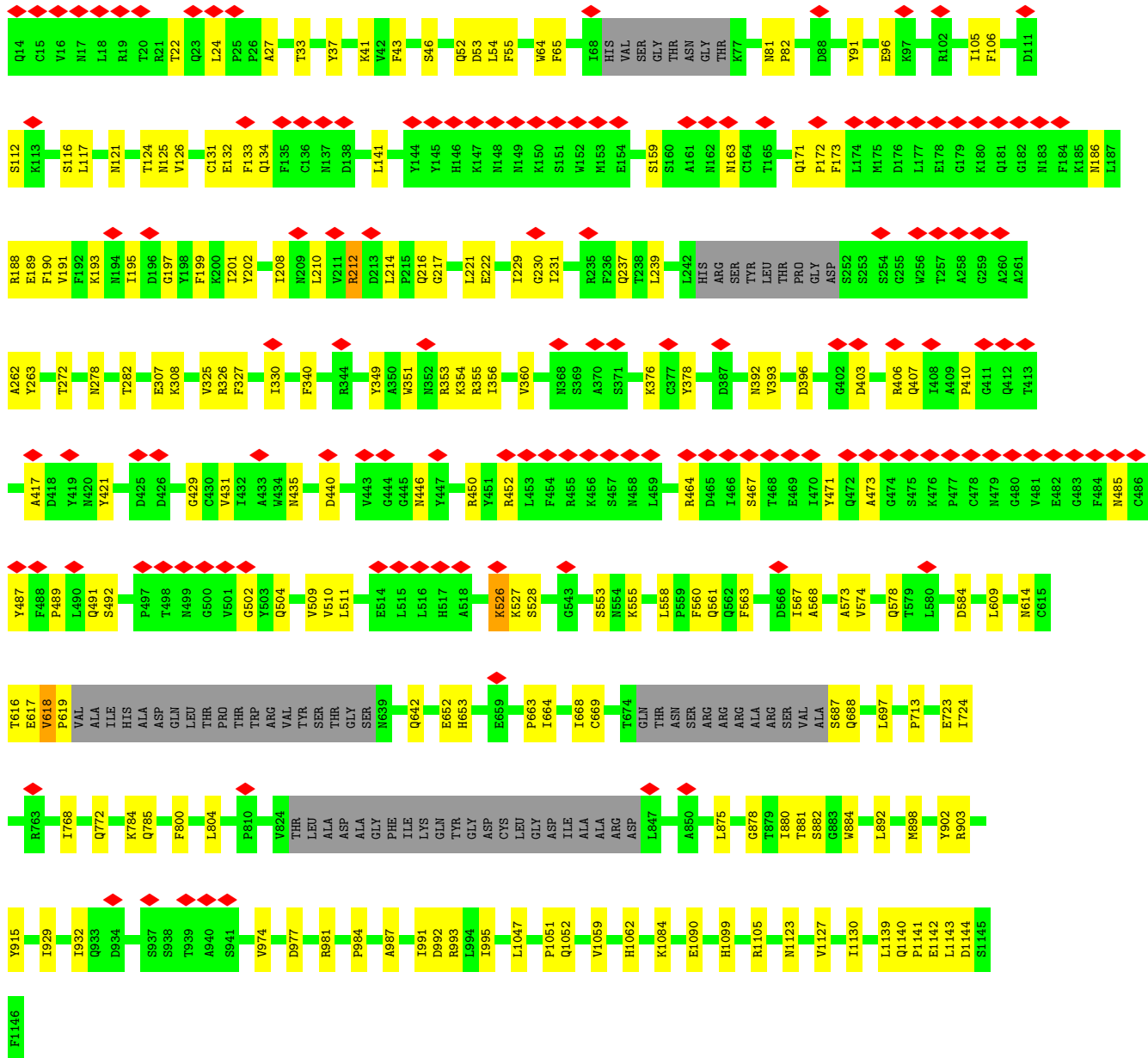
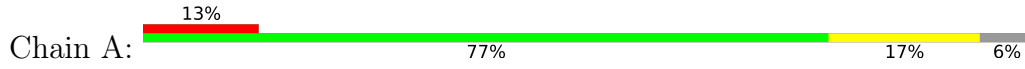
Continued on next page...

Continued from previous page...

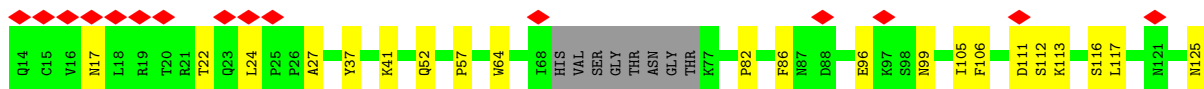
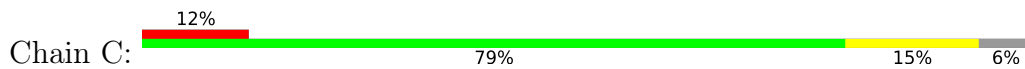
Mol	Chain	Residues	Atoms				AltConf
3	C	1	Total	C	N	O	0
			182	104	13	65	
3	C	1	Total	C	N	O	0
			182	104	13	65	
3	C	1	Total	C	N	O	0
			182	104	13	65	
3	C	1	Total	C	N	O	0
			182	104	13	65	

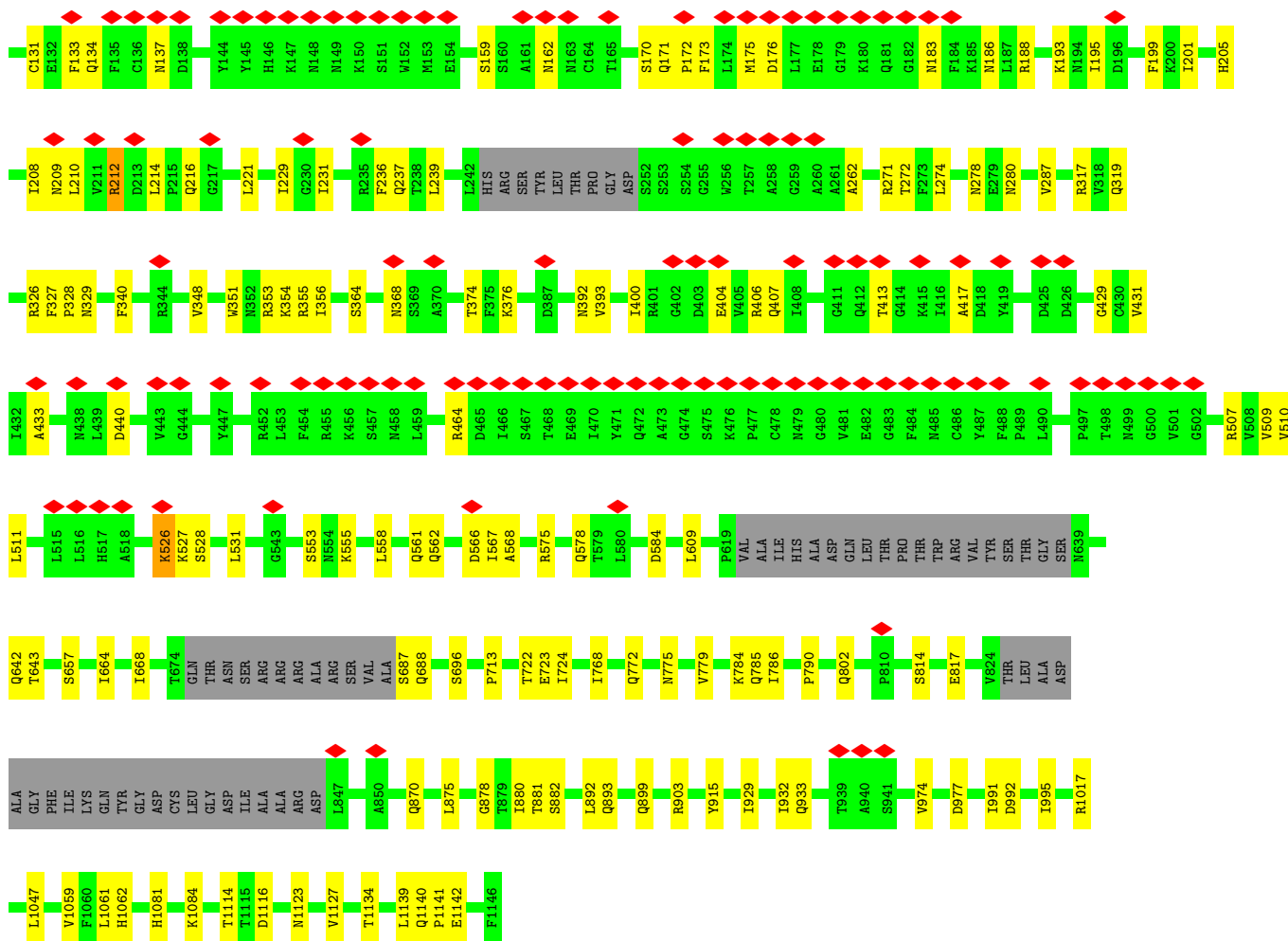


• Molecule 1: Spike glycoprotein



• Molecule 1: Spike glycoprotein





- Molecule 2: 2-acetamido-2-deoxy-beta-D-glucopyranose-(1-4)-2-acetamido-2-deoxy-beta-D-glucopyranose

Chain D:  100%



- Molecule 2: 2-acetamido-2-deoxy-beta-D-glucopyranose-(1-4)-2-acetamido-2-deoxy-beta-D-glucopyranose

Chain E:  100%



- Molecule 2: 2-acetamido-2-deoxy-beta-D-glucopyranose-(1-4)-2-acetamido-2-deoxy-beta-D-glucopyranose

Chain F:  100%

MAG1
MAG2

- Molecule 2: 2-acetamido-2-deoxy-beta-D-glucofuranose-(1-4)-2-acetamido-2-deoxy-beta-D-glucopyranose

Chain G:  100%MAG1
MAG2

- Molecule 2: 2-acetamido-2-deoxy-beta-D-glucofuranose-(1-4)-2-acetamido-2-deoxy-beta-D-glucopyranose

Chain H:  100%MAG1
MAG2

- Molecule 2: 2-acetamido-2-deoxy-beta-D-glucofuranose-(1-4)-2-acetamido-2-deoxy-beta-D-glucopyranose

Chain I:  100%MAG1
MAG2

4 Experimental information

Property	Value	Source
EM reconstruction method	SINGLE PARTICLE	Depositor
Imposed symmetry	POINT, Not provided	
Number of particles used	171670	Depositor
Resolution determination method	FSC 0.143 CUT-OFF	Depositor
CTF correction method	NONE	Depositor
Microscope	FEI TITAN KRIOS	Depositor
Voltage (kV)	300	Depositor
Electron dose ($e^-/\text{\AA}^2$)	60	Depositor
Minimum defocus (nm)	1500	Depositor
Maximum defocus (nm)	2500	Depositor
Magnification	Not provided	
Image detector	GATAN K3 (6k x 4k)	Depositor
Maximum map value	2.109	Depositor
Minimum map value	-0.931	Depositor
Average map value	0.001	Depositor
Map value standard deviation	0.050	Depositor
Recommended contour level	0.34	Depositor
Map size (\AA)	342.40002, 342.40002, 342.40002	wwPDB
Map dimensions	320, 320, 320	wwPDB
Map angles ($^\circ$)	90.0, 90.0, 90.0	wwPDB
Pixel spacing (\AA)	1.07, 1.07, 1.07	Depositor

5 Model quality [i](#)

5.1 Standard geometry [i](#)

Bond lengths and bond angles in the following residue types are not validated in this section: NAG

The Z score for a bond length (or angle) is the number of standard deviations the observed value is removed from the expected value. A bond length (or angle) with $|Z| > 5$ is considered an outlier worth inspection. RMSZ is the root-mean-square of all Z scores of the bond lengths (or angles).

Mol	Chain	Bond lengths		Bond angles	
		RMSZ	# Z >5	RMSZ	# Z >5
1	A	0.27	0/8496	0.48	0/11557
1	B	0.27	0/8496	0.48	0/11557
1	C	0.27	0/8496	0.48	0/11557
All	All	0.27	0/25488	0.48	0/34671

There are no bond length outliers.

There are no bond angle outliers.

There are no chirality outliers.

There are no planarity outliers.

5.2 Too-close contacts [i](#)

In the following table, the Non-H and H(model) columns list the number of non-hydrogen atoms and hydrogen atoms in the chain respectively. The H(added) column lists the number of hydrogen atoms added and optimized by MolProbity. The Clashes column lists the number of clashes within the asymmetric unit, whereas Symm-Clashes lists symmetry-related clashes.

Mol	Chain	Non-H	H(model)	H(added)	Clashes	Symm-Clashes
1	A	8305	0	8102	123	0
1	B	8305	0	8102	135	0
1	C	8305	0	8102	106	0
2	D	28	0	25	0	0
2	E	28	0	25	0	0
2	F	28	0	25	1	0
2	G	28	0	25	0	0
2	H	28	0	25	0	0
2	I	28	0	25	0	0
3	A	182	0	169	2	0

Continued on next page...

Continued from previous page...

Mol	Chain	Non-H	H(model)	H(added)	Clashes	Symm-Clashes
3	B	182	0	169	1	0
3	C	182	0	169	1	0
All	All	25629	0	24963	351	0

The all-atom clashscore is defined as the number of clashes found per 1000 atoms (including hydrogen atoms). The all-atom clashscore for this structure is 7.

All (351) close contacts within the same asymmetric unit are listed below, sorted by their clash magnitude.

Atom-1	Atom-2	Interatomic distance (Å)	Clash overlap (Å)
1:B:96:GLU:O	1:B:186:ASN:HB3	1.67	0.94
1:C:96:GLU:O	1:C:186:ASN:HB3	1.68	0.94
1:A:96:GLU:O	1:A:186:ASN:HB3	1.82	0.79
1:A:125:ASN:HB3	1:A:172:PRO:HA	1.66	0.76
1:B:429:GLY:HA3	1:B:511:LEU:O	1.86	0.75
1:B:561:GLN:NE2	1:C:41:LYS:O	2.21	0.74
1:C:125:ASN:HB3	1:C:172:PRO:HA	1.70	0.73
1:A:553:SER:HB3	1:A:584:ASP:HB2	1.71	0.72
1:B:356:ILE:HB	1:B:393:VAL:HB	1.72	0.72
1:C:903:ARG:NH1	1:C:1047:LEU:O	2.24	0.70
1:B:880:ILE:HG23	1:B:881:THR:HG23	1.74	0.69
1:B:125:ASN:HB3	1:B:172:PRO:HA	1.75	0.69
1:B:553:SER:HB3	1:B:584:ASP:HB2	1.75	0.69
1:C:429:GLY:HA3	1:C:511:LEU:O	1.92	0.69
1:A:124:THR:HG21	3:A:1202:NAG:H61	1.74	0.69
1:A:526:LYS:HD2	1:A:528:SER:H	1.57	0.69
1:B:351:TRP:O	1:B:464:ARG:NH2	2.25	0.69
1:B:615:CYS:HA	1:B:618:VAL:HG23	1.74	0.69
1:B:326:ARG:HH12	1:B:531:LEU:HD23	1.59	0.67
1:A:903:ARG:NH1	1:A:1047:LEU:O	2.27	0.67
1:A:880:ILE:HG23	1:A:881:THR:HG23	1.77	0.67
1:C:880:ILE:HG23	1:C:881:THR:HG23	1.76	0.67
1:C:351:TRP:O	1:C:464:ARG:NH2	2.28	0.67
1:C:553:SER:HB3	1:C:584:ASP:HB2	1.77	0.67
1:A:351:TRP:O	1:A:464:ARG:NH2	2.27	0.66
1:A:784:LYS:HG3	1:A:785:GLN:HG2	1.76	0.66
1:C:526:LYS:HD2	1:C:528:SER:H	1.59	0.66
1:B:567:ILE:HG23	1:B:568:ALA:H	1.61	0.66
1:B:723:GLU:OE2	1:B:1062:HIS:NE2	2.25	0.65
1:C:567:ILE:HG23	1:C:568:ALA:H	1.61	0.65
1:B:903:ARG:NH1	1:B:1047:LEU:O	2.28	0.65

Continued on next page...

Continued from previous page...

Atom-1	Atom-2	Interatomic distance (Å)	Clash overlap (Å)
1:A:64:TRP:HE1	1:A:262:ALA:HB1	1.62	0.65
1:A:1084:LYS:HA	1:A:1123:ASN:HA	1.77	0.64
1:B:132:GLU:HB3	1:B:163:ASN:HB3	1.80	0.64
1:A:429:GLY:HA3	1:A:511:LEU:O	1.98	0.64
1:B:186:ASN:OD1	1:B:188:ARG:NH1	2.31	0.64
1:C:64:TRP:HE1	1:C:262:ALA:HB1	1.63	0.64
1:C:723:GLU:OE2	1:C:1062:HIS:NE2	2.28	0.64
1:A:41:LYS:O	1:C:561:GLN:NE2	2.31	0.63
1:C:278:ASN:HD21	1:C:280:ASN:HB2	1.64	0.63
1:C:404:GLU:OE1	1:C:407:GLN:NE2	2.30	0.63
1:A:567:ILE:HG23	1:A:568:ALA:H	1.63	0.62
1:C:642:GLN:NE2	1:C:643:THR:O	2.32	0.62
1:C:1084:LYS:HA	1:C:1123:ASN:HA	1.81	0.62
1:B:278:ASN:HD21	1:B:280:ASN:HB2	1.62	0.62
1:B:642:GLN:NE2	1:B:643:THR:O	2.33	0.62
1:C:775:ASN:OD1	1:C:1017:ARG:NH1	2.33	0.62
1:B:175:MET:SD	1:B:188:ARG:NH2	2.73	0.62
1:C:328:PRO:HA	1:C:578:GLN:HG3	1.82	0.62
1:A:878:GLY:O	1:A:882:SER:OG	2.16	0.62
1:C:348:VAL:HG11	1:C:400:ILE:HD13	1.83	0.61
1:C:214:LEU:O	1:C:216:GLN:NE2	2.34	0.61
1:A:278:ASN:ND2	1:A:282:THR:OG1	2.34	0.61
1:B:27:ALA:HB3	1:B:64:TRP:HB3	1.83	0.61
1:B:775:ASN:OD1	1:B:1017:ARG:NH1	2.34	0.61
1:C:354:LYS:NZ	1:C:355:ARG:O	2.33	0.61
1:B:326:ARG:HD2	1:B:528:SER:HB3	1.83	0.60
1:A:356:ILE:HB	1:A:393:VAL:HB	1.83	0.60
1:A:212:ARG:NH1	1:A:212:ARG:O	2.34	0.60
1:B:491:GLN:NE2	1:B:492:SER:O	2.34	0.60
1:A:354:LYS:NZ	1:A:355:ARG:O	2.33	0.60
1:C:364:SER:O	1:C:368:ASN:ND2	2.34	0.60
1:C:784:LYS:HG3	1:C:785:GLN:HG2	1.84	0.60
1:B:657:SER:HB2	1:B:696:SER:HB3	1.84	0.60
1:B:401:ARG:HE	1:B:403:ASP:HB2	1.67	0.60
1:B:125:ASN:ND2	1:B:170:SER:O	2.35	0.59
1:C:171:GLN:HE22	1:C:173:PHE:HB3	1.67	0.59
1:A:723:GLU:OE2	1:A:1062:HIS:NE2	2.29	0.59
1:C:125:ASN:ND2	1:C:170:SER:O	2.36	0.59
1:B:1084:LYS:HA	1:B:1123:ASN:HA	1.85	0.58
1:B:364:SER:O	1:B:368:ASN:ND2	2.35	0.58
1:B:212:ARG:O	1:B:212:ARG:NH1	2.35	0.58

Continued on next page...

Continued from previous page...

Atom-1	Atom-2	Interatomic distance (Å)	Clash overlap (Å)
1:B:340:PHE:HE1	1:B:509:VAL:HG21	1.68	0.58
1:C:112:SER:O	1:C:162:ASN:ND2	2.36	0.58
1:A:558:LEU:HB2	1:A:561:GLN:HG2	1.86	0.58
1:B:355:ARG:HH12	1:B:392:ASN:HD22	1.52	0.58
1:C:724:ILE:HG12	1:C:1059:VAL:HG22	1.86	0.57
1:A:27:ALA:HB3	1:A:64:TRP:HB3	1.85	0.57
1:C:562:GLN:OE1	1:C:575:ARG:NH2	2.36	0.57
1:C:208:ILE:HG13	1:C:210:LEU:H	1.69	0.57
1:B:724:ILE:HG12	1:B:1059:VAL:HG22	1.86	0.57
1:B:558:LEU:HB2	1:B:561:GLN:HG3	1.86	0.57
1:B:562:GLN:OE1	1:B:575:ARG:NH2	2.37	0.57
1:B:96:GLU:O	1:B:186:ASN:CB	2.50	0.56
1:B:330:ILE:HG13	1:B:360:VAL:HG21	1.87	0.56
1:C:326:ARG:HD2	1:C:528:SER:HB3	1.87	0.56
1:C:657:SER:HB3	1:C:696:SER:HB3	1.87	0.56
1:A:33:THR:OG1	1:A:217:GLY:O	2.23	0.56
1:B:326:ARG:HH21	1:B:578:GLN:HB2	1.70	0.56
1:B:407:GLN:OE1	1:B:417:ALA:N	2.39	0.56
1:A:327:PHE:HB2	1:A:526:LYS:HB2	1.88	0.56
1:A:326:ARG:HH21	1:A:578:GLN:HB2	1.71	0.56
1:C:106:PHE:HD2	1:C:117:LEU:HD23	1.71	0.56
1:C:193:LYS:HD3	1:C:195:ILE:HD12	1.87	0.56
1:C:105:ILE:HG23	1:C:239:LEU:HD11	1.88	0.56
1:C:775:ASN:O	1:C:779:VAL:HG23	2.06	0.56
1:B:1051:PRO:O	1:B:1052:GLN:NE2	2.32	0.55
1:A:214:LEU:O	1:A:216:GLN:NE2	2.40	0.55
1:C:558:LEU:HB2	1:C:561:GLN:HG3	1.89	0.55
1:A:53:ASP:OD2	1:A:193:LYS:NZ	2.40	0.55
1:A:407:GLN:OE1	1:A:417:ALA:N	2.40	0.55
1:B:550:LEU:HD21	1:B:583:LEU:HD13	1.89	0.54
1:B:354:LYS:NZ	1:B:355:ARG:O	2.34	0.54
1:C:802:GLN:OE1	1:C:933:GLN:NE2	2.40	0.54
1:B:99:ASN:ND2	1:B:176:ASP:O	2.40	0.54
1:C:768:ILE:O	1:C:772:GLN:HG2	2.07	0.54
1:A:330:ILE:HG13	1:A:360:VAL:HG21	1.90	0.53
1:C:326:ARG:HH12	1:C:531:LEU:HD23	1.73	0.53
1:A:491:GLN:NE2	1:A:492:SER:O	2.42	0.53
1:C:212:ARG:O	1:C:212:ARG:NH1	2.41	0.53
1:B:106:PHE:HD2	1:B:117:LEU:HD23	1.74	0.53
1:C:974:VAL:HG12	1:C:977:ASP:H	1.74	0.53
1:B:915:TYR:HB3	1:A:1127:VAL:HG23	1.91	0.53

Continued on next page...

Continued from previous page...

Atom-1	Atom-2	Interatomic distance (Å)	Clash overlap (Å)
1:A:188:ARG:HD3	1:A:190:PHE:HZ	1.74	0.52
1:A:724:ILE:HG23	1:A:1059:VAL:HG22	1.91	0.52
1:C:17:ASN:HD21	1:C:137:ASN:HD22	1.57	0.52
1:A:208:ILE:HG13	1:A:210:LEU:H	1.74	0.52
1:B:974:VAL:HG12	1:B:977:ASP:H	1.74	0.52
1:B:713:PRO:HA	1:B:1070:GLU:HA	1.92	0.52
1:A:171:GLN:HE22	1:A:173:PHE:HB3	1.74	0.52
1:C:356:ILE:HB	1:C:393:VAL:HB	1.91	0.52
1:A:768:ILE:O	1:A:772:GLN:HG2	2.10	0.52
1:A:652:GLU:OE2	1:A:653:HIS:N	2.43	0.52
1:A:116:SER:OG	1:A:131:CYS:O	2.17	0.52
1:C:327:PHE:HB2	1:C:526:LYS:HB2	1.92	0.52
1:B:208:ILE:HG13	1:B:210:LEU:H	1.74	0.51
1:A:800:PHE:HB3	1:A:804:LEU:HD23	1.90	0.51
1:A:326:ARG:HD2	1:A:528:SER:HB3	1.92	0.51
1:A:929:ILE:O	1:A:932:ILE:HG22	2.10	0.51
1:B:348:VAL:HG11	1:B:400:ILE:HD13	1.91	0.51
1:A:473:ALA:HB3	1:A:485:ASN:HB3	1.92	0.51
1:C:406:ARG:NH1	1:C:413:THR:O	2.33	0.51
1:A:1051:PRO:O	1:A:1052:GLN:NE2	2.37	0.51
1:A:974:VAL:HG12	1:A:977:ASP:H	1.76	0.51
1:C:27:ALA:HB3	1:C:64:TRP:HB3	1.93	0.51
1:B:159:SER:OG	1:B:160:SER:N	2.43	0.51
1:A:121:ASN:HA	1:A:126:VAL:HA	1.92	0.51
1:B:768:ILE:O	1:B:772:GLN:HG2	2.11	0.50
1:A:327:PHE:O	1:A:578:GLN:NE2	2.41	0.50
1:C:899:GLN:HE21	1:C:903:ARG:HE	1.58	0.50
1:B:183:ASN:ND2	1:B:209:ASN:OD1	2.43	0.50
1:A:105:ILE:HG12	1:A:237:GLN:O	2.12	0.50
1:A:614:ASN:OD1	1:A:642:GLN:NE2	2.42	0.50
1:A:403:ASP:N	1:A:502:GLY:O	2.44	0.50
1:A:452:ARG:NH1	1:A:467:SER:O	2.35	0.50
1:A:892:LEU:HD21	1:C:713:PRO:HD3	1.93	0.50
1:A:37:TYR:HB3	1:A:221:LEU:HD23	1.94	0.50
1:C:329:ASN:OD1	3:C:1205:NAG:N2	2.44	0.50
1:C:407:GLN:OE1	1:C:417:ALA:N	2.43	0.49
1:B:199:PHE:HD2	1:B:201:ILE:HD11	1.77	0.49
1:A:278:ASN:OD1	1:A:282:THR:N	2.36	0.49
1:A:984:PRO:O	1:A:987:ALA:N	2.36	0.49
1:C:274:LEU:HB3	1:C:287:VAL:HG23	1.95	0.49
1:B:1140:GLN:NE2	1:B:1144:ASP:OD2	2.46	0.49

Continued on next page...

Continued from previous page...

Atom-1	Atom-2	Interatomic distance (Å)	Clash overlap (Å)
1:A:131:CYS:HB2	1:A:133:PHE:CE2	2.48	0.49
1:A:340:PHE:HE1	1:A:509:VAL:HG21	1.78	0.49
1:B:437:ASN:OD1	1:B:441:SER:OG	2.23	0.49
1:A:687:SER:OG	1:A:688:GLN:N	2.46	0.49
1:A:81:ASN:OD1	1:A:237:GLN:NE2	2.46	0.48
1:B:1127:VAL:HG23	1:C:915:TYR:HB3	1.96	0.48
1:C:526:LYS:HD2	1:C:527:LYS:N	2.28	0.48
1:B:652:GLU:OE2	1:B:653:HIS:N	2.45	0.48
1:C:183:ASN:ND2	1:C:209:ASN:OD1	2.47	0.48
1:A:82:PRO:O	1:A:237:GLN:NE2	2.47	0.48
1:B:99:ASN:HB3	1:B:186:ASN:HD21	1.79	0.48
1:B:176:ASP:OD1	1:B:176:ASP:N	2.46	0.48
1:C:99:ASN:ND2	1:C:176:ASP:O	2.47	0.47
1:C:327:PHE:N	1:C:528:SER:OG	2.39	0.47
1:B:800:PHE:HB3	1:B:804:LEU:HD23	1.96	0.47
1:A:141:LEU:HG	1:A:239:LEU:HB3	1.96	0.47
1:A:618:VAL:H	1:A:619:PRO:CD	2.26	0.47
1:B:687:SER:OG	1:B:688:GLN:N	2.47	0.47
1:A:191:VAL:HG12	1:A:202:TYR:HB2	1.97	0.47
1:A:526:LYS:HD2	1:A:527:LYS:N	2.30	0.47
1:C:687:SER:OG	1:C:688:GLN:N	2.48	0.47
1:A:53:ASP:HB3	1:A:55:PHE:CE2	2.50	0.47
1:A:96:GLU:O	1:A:186:ASN:CB	2.59	0.47
1:A:663:PRO:HA	1:A:669:CYS:HB2	1.97	0.47
1:C:82:PRO:O	1:C:237:GLN:NE2	2.47	0.47
1:B:110:LEU:HD22	1:B:135:PHE:CE2	2.49	0.47
1:B:713:PRO:HD3	1:C:892:LEU:HD21	1.95	0.47
1:B:984:PRO:N	1:B:985:PRO:HD2	2.30	0.47
1:A:199:PHE:HD2	1:A:201:ILE:HD11	1.80	0.47
1:A:471:TYR:CZ	1:A:489:PRO:HA	2.51	0.46
1:A:616:THR:OG1	1:A:617:GLU:OE1	2.28	0.46
1:B:133:PHE:HZ	1:B:159:SER:H	1.63	0.46
1:B:274:LEU:HB3	1:B:287:VAL:HG23	1.96	0.46
1:B:542:ASN:H	1:B:544:LEU:HD23	1.80	0.46
1:A:349:TYR:HE1	1:A:450:ARG:HB2	1.80	0.46
1:A:697:LEU:HD12	1:A:697:LEU:HA	1.73	0.46
1:C:407:GLN:HB3	1:C:417:ALA:HB2	1.96	0.46
1:B:902:TYR:OH	1:A:1105:ARG:HD2	2.16	0.46
1:B:375:PHE:CD2	1:B:432:ILE:HG12	2.51	0.46
1:C:96:GLU:O	1:C:186:ASN:CB	2.53	0.46
1:B:899:GLN:HE21	1:B:903:ARG:HE	1.64	0.46

Continued on next page...

Continued from previous page...

Atom-1	Atom-2	Interatomic distance (Å)	Clash overlap (Å)
1:B:1091:GLY:H	1:B:1105:ARG:HH21	1.62	0.46
1:C:878:GLY:O	1:C:882:SER:OG	2.20	0.46
1:B:349:TYR:HE1	1:B:450:ARG:HB2	1.81	0.45
1:B:563:PHE:H	1:B:574:VAL:HG23	1.81	0.45
1:C:431:VAL:HG22	1:C:510:VAL:HG23	1.99	0.45
1:B:109:THR:HG21	1:B:113:LYS:HB2	1.98	0.45
1:A:431:VAL:HG22	1:A:510:VAL:HG23	1.99	0.45
1:A:1140:GLN:NE2	1:A:1144:ASP:OD2	2.49	0.45
1:B:1088:PRO:HG3	1:B:1093:PHE:CE1	2.52	0.45
1:C:116:SER:OG	1:C:131:CYS:O	2.23	0.45
1:C:555:LYS:NZ	1:C:566:ASP:OD2	2.35	0.45
1:B:22:THR:HG22	1:B:24:LEU:HG	1.98	0.45
1:B:34:ARG:HH21	1:B:215:PRO:HG2	1.81	0.45
1:B:435:ASN:ND2	1:B:504:GLN:OE1	2.43	0.45
1:B:663:PRO:HA	1:B:669:CYS:HB2	1.99	0.45
1:B:929:ILE:O	1:B:932:ILE:HG22	2.16	0.45
1:A:573:ALA:HA	1:A:584:ASP:HA	1.99	0.45
1:C:355:ARG:HH12	1:C:392:ASN:HD22	1.64	0.45
1:B:1140:GLN:HA	1:B:1143:LEU:HB2	1.98	0.45
1:B:1140:GLN:N	1:B:1141:PRO:HD2	2.31	0.45
1:C:111:ASP:HB3	1:C:113:LYS:HD3	1.97	0.45
1:C:1114:THR:HG22	1:C:1116:ASP:H	1.80	0.45
1:A:188:ARG:HD3	1:A:190:PHE:CZ	2.52	0.45
1:A:396:ASP:OD2	1:A:421:TYR:OH	2.28	0.45
1:A:435:ASN:ND2	1:A:504:GLN:OE1	2.41	0.45
1:A:471:TYR:HD2	1:A:487:TYR:HB2	1.82	0.45
1:A:984:PRO:HA	1:A:987:ALA:HB3	1.99	0.45
1:A:1140:GLN:N	1:A:1141:PRO:HD2	2.31	0.45
1:B:452:ARG:NH1	1:B:467:SER:O	2.41	0.45
1:C:317:ARG:HH11	1:C:317:ARG:HG3	1.82	0.45
1:C:1139:LEU:HA	1:C:1142:GLU:OE2	2.16	0.45
1:B:310:ILE:HB	1:B:596:ILE:HG22	1.98	0.45
1:A:197:GLY:HA2	1:A:230:GLY:HA2	1.97	0.45
1:B:336:PHE:CE1	1:B:366:LEU:HD11	2.52	0.45
1:B:1091:GLY:H	1:B:1105:ARG:NH2	2.14	0.45
1:A:43:PHE:HB2	1:C:561:GLN:HB3	1.98	0.44
1:B:363:TYR:H	1:B:386:ASN:HD21	1.66	0.44
1:B:892:LEU:HD21	1:A:713:PRO:HD3	1.98	0.44
1:A:440:ASP:O	1:A:446:ASN:ND2	2.36	0.44
1:C:664:ILE:HB	1:C:668:ILE:O	2.17	0.44
1:C:37:TYR:HB3	1:C:221:LEU:HD23	1.99	0.44

Continued on next page...

Continued from previous page...

Atom-1	Atom-2	Interatomic distance (Å)	Clash overlap (Å)
1:C:86:PHE:HB2	1:C:236:PHE:HD1	1.81	0.44
1:B:105:ILE:HD11	1:B:237:GLN:HB3	1.99	0.44
1:B:596:ILE:HG13	1:B:607:ALA:HB3	1.99	0.44
1:A:555:LYS:HD2	1:A:555:LYS:HA	1.86	0.44
1:A:664:ILE:HB	1:A:668:ILE:O	2.18	0.44
1:A:915:TYR:HB3	1:C:1127:VAL:HG23	1.98	0.44
1:C:722:THR:HG22	1:C:1061:LEU:HD23	2.00	0.44
1:B:327:PHE:HB2	1:B:526:LYS:HB2	1.99	0.44
1:A:563:PHE:H	1:A:574:VAL:HG23	1.83	0.44
1:B:327:PHE:O	1:B:578:GLN:NE2	2.49	0.44
1:C:340:PHE:HE1	1:C:509:VAL:HG11	1.81	0.44
1:B:229:ILE:HG22	1:B:231:ILE:HG23	1.99	0.44
1:B:878:GLY:O	1:B:882:SER:OG	2.23	0.44
1:C:57:PRO:HG3	1:C:271:ARG:HE	1.80	0.44
1:C:1140:GLN:N	1:C:1141:PRO:HD2	2.32	0.44
1:A:1140:GLN:HA	1:A:1143:LEU:HB2	1.99	0.44
1:B:17:ASN:HA	1:B:138:ASP:HB2	1.99	0.43
1:B:640:VAL:HG12	1:B:649:ILE:HG22	2.00	0.43
1:A:53:ASP:CG	1:A:54:LEU:H	2.21	0.43
1:B:451:TYR:CE1	1:B:491:GLN:HB3	2.54	0.43
1:B:664:ILE:HB	1:B:668:ILE:O	2.18	0.43
1:A:609:LEU:HD22	1:A:664:ILE:HG23	2.00	0.43
1:C:199:PHE:HD2	1:C:201:ILE:HD11	1.84	0.43
1:C:229:ILE:HG22	1:C:231:ILE:HG23	2.00	0.43
1:C:354:LYS:HA	1:C:354:LYS:HD2	1.86	0.43
1:B:106:PHE:HB3	1:B:233:ILE:HD13	1.99	0.43
1:B:455:ARG:HH12	1:B:459:LEU:HD13	1.83	0.43
1:C:22:THR:HG22	1:C:24:LEU:HG	2.00	0.43
1:C:893:GLN:N	1:C:893:GLN:OE1	2.51	0.43
1:C:131:CYS:HB2	1:C:133:PHE:CE2	2.52	0.43
1:A:355:ARG:HH12	1:A:392:ASN:HD22	1.66	0.43
1:B:894:ILE:HD12	1:B:895:PRO:HD2	2.00	0.43
1:A:91:TYR:HE1	1:A:189:GLU:HG3	1.83	0.43
1:B:118:LEU:HB3	1:B:129:LYS:HB3	2.01	0.43
1:A:132:GLU:OE1	1:A:163:ASN:ND2	2.42	0.43
1:A:617:GLU:OE1	1:A:617:GLU:N	2.52	0.43
1:B:349:TYR:CE1	1:B:450:ARG:HB2	2.54	0.43
1:A:22:THR:HG22	1:A:24:LEU:HG	2.00	0.43
1:B:34:ARG:NH2	1:B:215:PRO:O	2.51	0.43
1:B:1043:LYS:O	1:B:1064:THR:HG21	2.18	0.43
1:A:992:ASP:OD1	1:A:993:ARG:N	2.52	0.43

Continued on next page...

Continued from previous page...

Atom-1	Atom-2	Interatomic distance (Å)	Clash overlap (Å)
1:C:171:GLN:NE2	1:C:173:PHE:HB3	2.31	0.43
1:B:1139:LEU:HA	1:B:1142:GLU:OE2	2.18	0.43
1:A:222:GLU:N	1:A:222:GLU:OE1	2.52	0.43
1:C:786:ILE:HD13	1:C:870:GLN:HG2	2.00	0.43
1:B:110:LEU:HB3	1:B:135:PHE:HD2	1.84	0.42
1:A:193:LYS:HG2	1:A:195:ILE:HG12	2.01	0.42
1:B:92:PHE:HE1	1:B:94:SER:HB3	1.83	0.42
1:A:376:LYS:HB2	1:A:376:LYS:HE2	1.85	0.42
1:C:134:GLN:O	1:C:159:SER:HB3	2.19	0.42
1:B:407:GLN:HB3	1:B:417:ALA:HB2	2.00	0.42
1:A:378:TYR:HE2	1:A:410:PRO:HD2	1.85	0.42
1:B:31:SER:OG	1:B:60:SER:OG	2.34	0.42
1:A:1139:LEU:HA	1:A:1142:GLU:OE2	2.20	0.42
1:C:374:THR:OG1	1:C:433:ALA:HB3	2.20	0.42
1:C:814:SER:N	1:C:817:GLU:OE1	2.50	0.42
1:B:52:GLN:HA	1:B:272:THR:HA	2.01	0.42
1:A:112:SER:HB3	1:A:134:GLN:HB2	2.01	0.42
1:C:875:LEU:HD23	1:C:875:LEU:HA	1.91	0.42
1:B:558:LEU:HB2	1:B:561:GLN:CG	2.50	0.42
1:A:884:TRP:HH2	1:A:902:TYR:CD2	2.37	0.42
1:A:134:GLN:O	1:A:159:SER:HB3	2.19	0.42
1:A:1127:VAL:HG13	1:A:1130:ILE:HB	2.02	0.42
1:B:1029:GLU:HB3	1:B:1035:SER:OG	2.20	0.42
1:A:65:PHE:HB2	1:A:263:TYR:CZ	2.54	0.42
1:A:875:LEU:HD23	1:A:875:LEU:HA	1.92	0.42
1:C:440:ASP:OD1	1:C:507:ARG:NH2	2.52	0.42
1:B:729:MET:HG3	1:B:772:GLN:HE22	1.85	0.41
1:C:374:THR:HB	1:C:376:LYS:NZ	2.35	0.41
1:A:307:GLU:OE2	1:A:308:LYS:HG2	2.20	0.41
1:A:991:ILE:O	1:A:995:ILE:HG12	2.19	0.41
1:A:1099:HIS:ND1	3:A:1212:NAG:H5	2.35	0.41
1:B:354:LYS:HD2	1:B:354:LYS:HA	1.85	0.41
1:C:52:GLN:HA	1:C:272:THR:HA	2.02	0.41
1:B:148:ASN:ND2	1:B:257:THR:OG1	2.50	0.41
1:B:376:LYS:HB2	1:B:376:LYS:HE2	1.84	0.41
1:C:317:ARG:HH12	1:C:319:GLN:HA	1.86	0.41
1:B:197:GLY:HA2	1:B:230:GLY:HA2	2.01	0.41
1:B:223:PRO:HD2	1:A:560:PHE:CZ	2.55	0.41
1:B:325:VAL:HG12	1:B:325:VAL:O	2.20	0.41
1:A:106:PHE:HB2	1:A:117:LEU:HB3	2.02	0.41
1:C:609:LEU:HD22	1:C:664:ILE:HG23	2.02	0.41

Continued on next page...

Continued from previous page...

Atom-1	Atom-2	Interatomic distance (Å)	Clash overlap (Å)
1:C:992:ASP:OD1	1:C:992:ASP:N	2.54	0.41
1:B:110:LEU:HG	1:B:235:ARG:HH11	1.86	0.41
1:B:850:ALA:HB1	1:A:567:ILE:HG12	2.01	0.41
1:A:46:SER:N	1:A:278:ASN:O	2.49	0.41
1:B:278:ASN:ND2	1:B:280:ASN:HB2	2.33	0.41
1:B:415:LYS:HE3	1:B:451:TYR:HE2	1.85	0.41
1:B:705:TYR:HD2	1:C:790:PRO:HG3	1.86	0.41
1:B:1099:HIS:ND1	3:B:1212:NAG:H5	2.36	0.41
1:A:1090:GLU:OE2	1:A:1105:ARG:NH1	2.54	0.41
1:C:175:MET:SD	1:C:188:ARG:NH1	2.88	0.41
1:C:929:ILE:O	1:C:932:ILE:HG22	2.20	0.41
1:C:991:ILE:O	1:C:995:ILE:HG12	2.20	0.41
1:B:30:ASN:HB3	1:B:32:PHE:CE1	2.55	0.41
1:B:100:ILE:O	1:B:102:ARG:HG2	2.21	0.41
1:B:991:ILE:O	1:B:995:ILE:HG12	2.20	0.41
1:A:37:TYR:HH	1:A:193:LYS:HZ2	1.62	0.41
1:C:278:ASN:ND2	1:C:280:ASN:HB2	2.33	0.41
2:F:1:NAG:H62	2:F:2:NAG:H82	2.02	0.41
1:B:517:HIS:O	1:C:41:LYS:HD3	2.21	0.41
1:A:229:ILE:HG22	1:A:231:ILE:HG23	2.03	0.41
1:C:188:ARG:HE	1:C:205:HIS:CG	2.39	0.41
1:B:459:LEU:HD22	1:B:465:ASP:HB2	2.02	0.40
1:A:52:GLN:HA	1:A:272:THR:HA	2.02	0.40
1:A:325:VAL:HG12	1:A:325:VAL:O	2.20	0.40
1:A:354:LYS:HA	1:A:354:LYS:HD2	1.89	0.40
1:A:977:ASP:O	1:A:981:ARG:HB2	2.21	0.40
1:B:473:ALA:HB3	1:B:485:ASN:HB3	2.02	0.40
1:C:1081:HIS:ND1	1:C:1134:THR:HA	2.37	0.40
1:B:378:TYR:HE2	1:B:410:PRO:HD2	1.86	0.40
1:B:904:PHE:CE2	1:B:914:LEU:HD13	2.56	0.40
1:B:146:HIS:ND1	1:B:252:SER:OG	2.50	0.40
1:B:765:LEU:HD23	1:B:765:LEU:HA	1.92	0.40
1:B:33:THR:OG1	1:B:217:GLY:O	2.30	0.40

There are no symmetry-related clashes.

5.3 Torsion angles [i](#)

5.3.1 Protein backbone [i](#)

In the following table, the Percentiles column shows the percent Ramachandran outliers of the chain as a percentile score with respect to all PDB entries followed by that with respect to all EM entries.

The Analysed column shows the number of residues for which the backbone conformation was analysed, and the total number of residues.

Mol	Chain	Analysed	Favoured	Allowed	Outliers	Percentiles	
1	A	1051/1133 (93%)	998 (95%)	52 (5%)	1 (0%)	51	84
1	B	1051/1133 (93%)	998 (95%)	53 (5%)	0	100	100
1	C	1051/1133 (93%)	998 (95%)	53 (5%)	0	100	100
All	All	3153/3399 (93%)	2994 (95%)	158 (5%)	1 (0%)	100	100

All (1) Ramachandran outliers are listed below:

Mol	Chain	Res	Type
1	A	618	VAL

5.3.2 Protein sidechains [i](#)

In the following table, the Percentiles column shows the percent sidechain outliers of the chain as a percentile score with respect to all PDB entries followed by that with respect to all EM entries.

The Analysed column shows the number of residues for which the sidechain conformation was analysed, and the total number of residues.

Mol	Chain	Analysed	Rotameric	Outliers	Percentiles	
1	A	927/982 (94%)	922 (100%)	5 (0%)	88	93
1	B	927/982 (94%)	923 (100%)	4 (0%)	91	94
1	C	927/982 (94%)	924 (100%)	3 (0%)	92	95
All	All	2781/2946 (94%)	2769 (100%)	12 (0%)	91	94

All (12) residues with a non-rotameric sidechain are listed below:

Mol	Chain	Res	Type
1	B	212	ARG
1	B	353	ARG

Continued on next page...

Continued from previous page...

Mol	Chain	Res	Type
1	B	406	ARG
1	B	460	LYS
1	A	212	ARG
1	A	353	ARG
1	A	406	ARG
1	A	526	LYS
1	A	898	MET
1	C	212	ARG
1	C	353	ARG
1	C	526	LYS

Sometimes sidechains can be flipped to improve hydrogen bonding and reduce clashes. All (6) such sidechains are listed below:

Mol	Chain	Res	Type
1	B	237	GLN
1	B	772	GLN
1	A	237	GLN
1	C	137	ASN
1	C	899	GLN
1	C	933	GLN

5.3.3 RNA [i](#)

There are no RNA molecules in this entry.

5.4 Non-standard residues in protein, DNA, RNA chains [i](#)

There are no non-standard protein/DNA/RNA residues in this entry.

5.5 Carbohydrates [i](#)

12 monosaccharides are modelled in this entry.

In the following table, the Counts columns list the number of bonds (or angles) for which Mogul statistics could be retrieved, the number of bonds (or angles) that are observed in the model and the number of bonds (or angles) that are defined in the Chemical Component Dictionary. The Link column lists molecule types, if any, to which the group is linked. The Z score for a bond length (or angle) is the number of standard deviations the observed value is removed from the expected value. A bond length (or angle) with $|Z| > 2$ is considered an outlier worth inspection. RMSZ is the root-mean-square of all Z scores of the bond lengths (or angles).

Mol	Type	Chain	Res	Link	Bond lengths			Bond angles		
					Counts	RMSZ	# Z > 2	Counts	RMSZ	# Z > 2
2	NAG	D	1	1,2	14,14,15	0.22	0	17,19,21	0.46	0
2	NAG	D	2	2	14,14,15	0.21	0	17,19,21	0.44	0
2	NAG	E	1	1,2	14,14,15	0.21	0	17,19,21	0.41	0
2	NAG	E	2	2	14,14,15	0.20	0	17,19,21	0.42	0
2	NAG	F	1	1,2	14,14,15	0.24	0	17,19,21	0.45	0
2	NAG	F	2	2	14,14,15	0.21	0	17,19,21	0.43	0
2	NAG	G	1	1,2	14,14,15	0.24	0	17,19,21	0.41	0
2	NAG	G	2	2	14,14,15	0.21	0	17,19,21	0.42	0
2	NAG	H	1	1,2	14,14,15	0.23	0	17,19,21	0.46	0
2	NAG	H	2	2	14,14,15	0.18	0	17,19,21	0.43	0
2	NAG	I	1	1,2	14,14,15	0.24	0	17,19,21	0.41	0
2	NAG	I	2	2	14,14,15	0.21	0	17,19,21	0.42	0

In the following table, the Chirals column lists the number of chiral outliers, the number of chiral centers analysed, the number of these observed in the model and the number defined in the Chemical Component Dictionary. Similar counts are reported in the Torsion and Rings columns. '-' means no outliers of that kind were identified.

Mol	Type	Chain	Res	Link	Chirals	Torsions	Rings
2	NAG	D	1	1,2	-	2/6/23/26	0/1/1/1
2	NAG	D	2	2	-	0/6/23/26	0/1/1/1
2	NAG	E	1	1,2	-	2/6/23/26	0/1/1/1
2	NAG	E	2	2	-	1/6/23/26	0/1/1/1
2	NAG	F	1	1,2	-	2/6/23/26	0/1/1/1
2	NAG	F	2	2	-	0/6/23/26	0/1/1/1
2	NAG	G	1	1,2	-	2/6/23/26	0/1/1/1
2	NAG	G	2	2	-	0/6/23/26	0/1/1/1
2	NAG	H	1	1,2	-	2/6/23/26	0/1/1/1
2	NAG	H	2	2	-	0/6/23/26	0/1/1/1
2	NAG	I	1	1,2	-	0/6/23/26	0/1/1/1
2	NAG	I	2	2	-	4/6/23/26	0/1/1/1

There are no bond length outliers.

There are no bond angle outliers.

There are no chirality outliers.

All (15) torsion outliers are listed below:

Mol	Chain	Res	Type	Atoms
2	I	2	NAG	O5-C5-C6-O6

Continued on next page...

Continued from previous page...

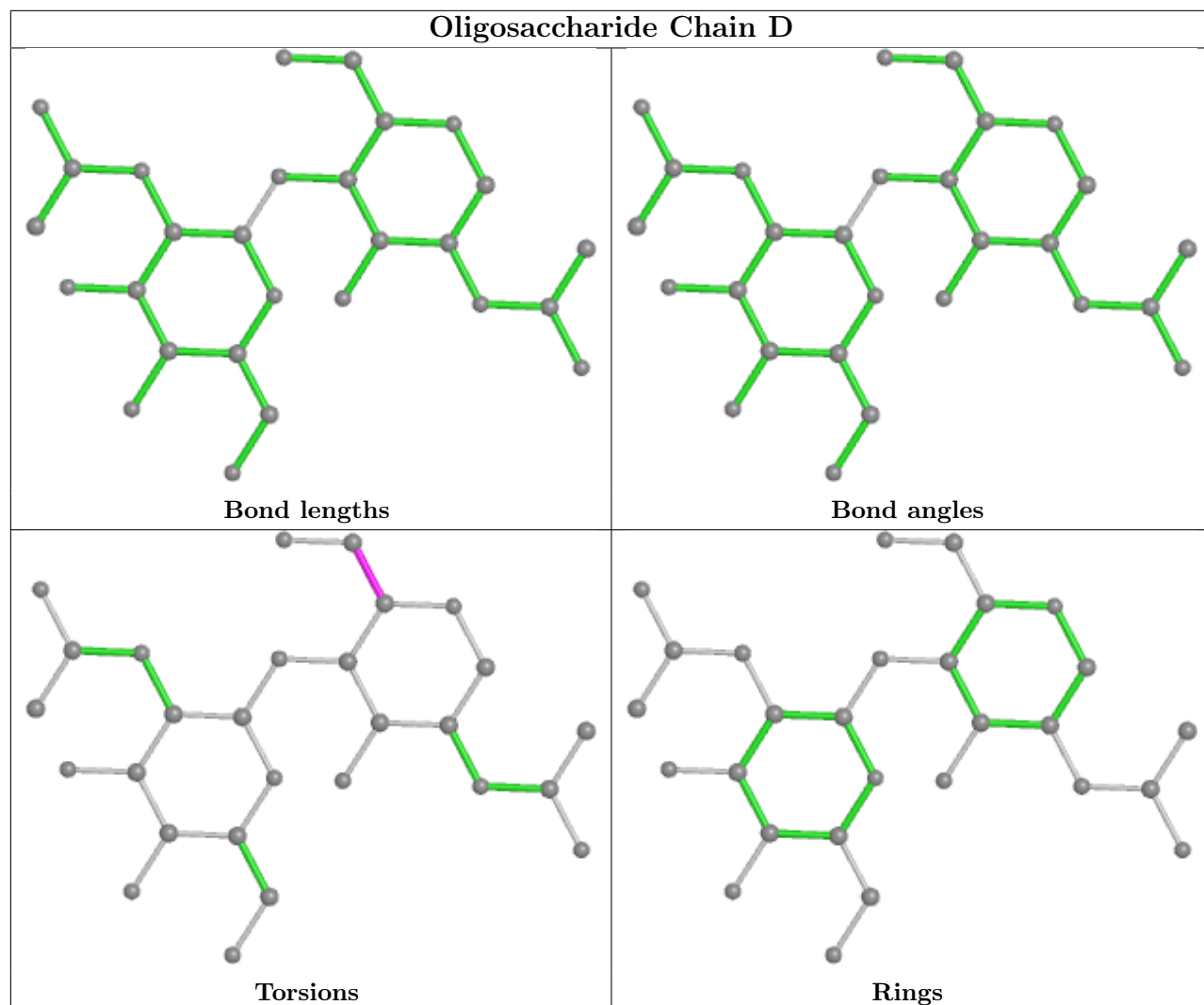
Mol	Chain	Res	Type	Atoms
2	F	1	NAG	O5-C5-C6-O6
2	H	1	NAG	O5-C5-C6-O6
2	F	1	NAG	C4-C5-C6-O6
2	D	1	NAG	O5-C5-C6-O6
2	E	1	NAG	C8-C7-N2-C2
2	E	1	NAG	O7-C7-N2-C2
2	G	1	NAG	C8-C7-N2-C2
2	G	1	NAG	O7-C7-N2-C2
2	I	2	NAG	C8-C7-N2-C2
2	I	2	NAG	O7-C7-N2-C2
2	H	1	NAG	C4-C5-C6-O6
2	I	2	NAG	C4-C5-C6-O6
2	D	1	NAG	C4-C5-C6-O6
2	E	2	NAG	C4-C5-C6-O6

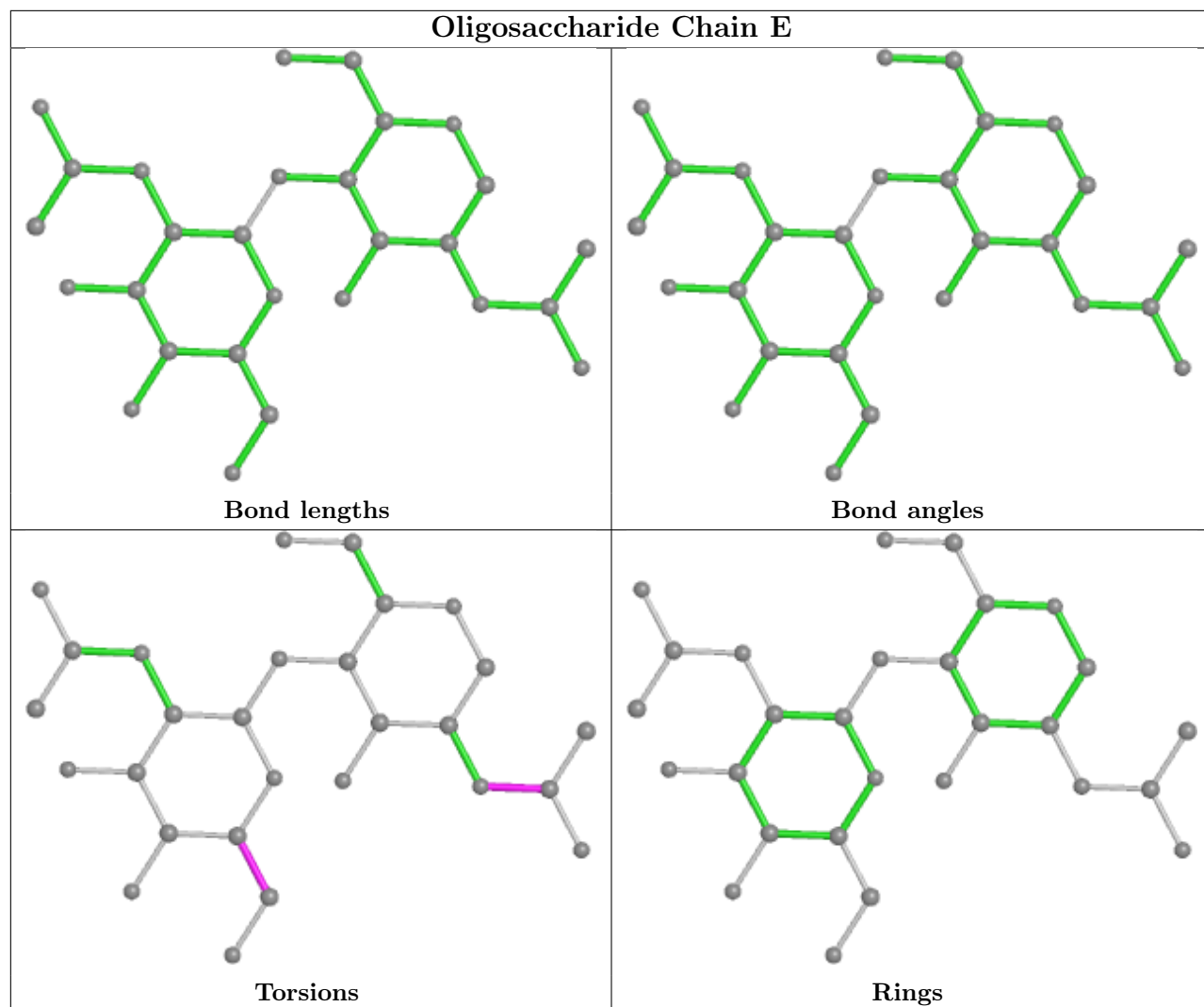
There are no ring outliers.

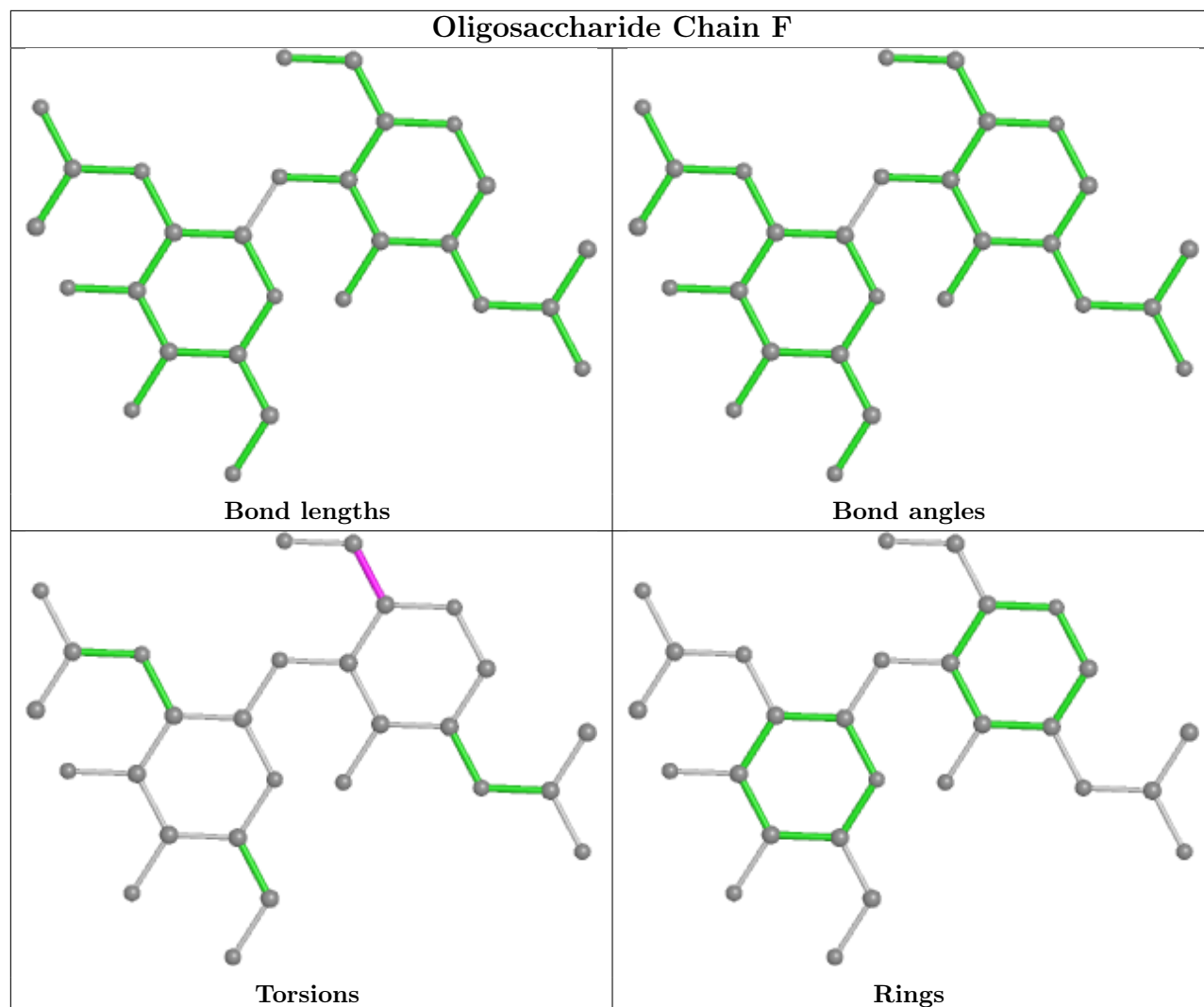
2 monomers are involved in 1 short contact:

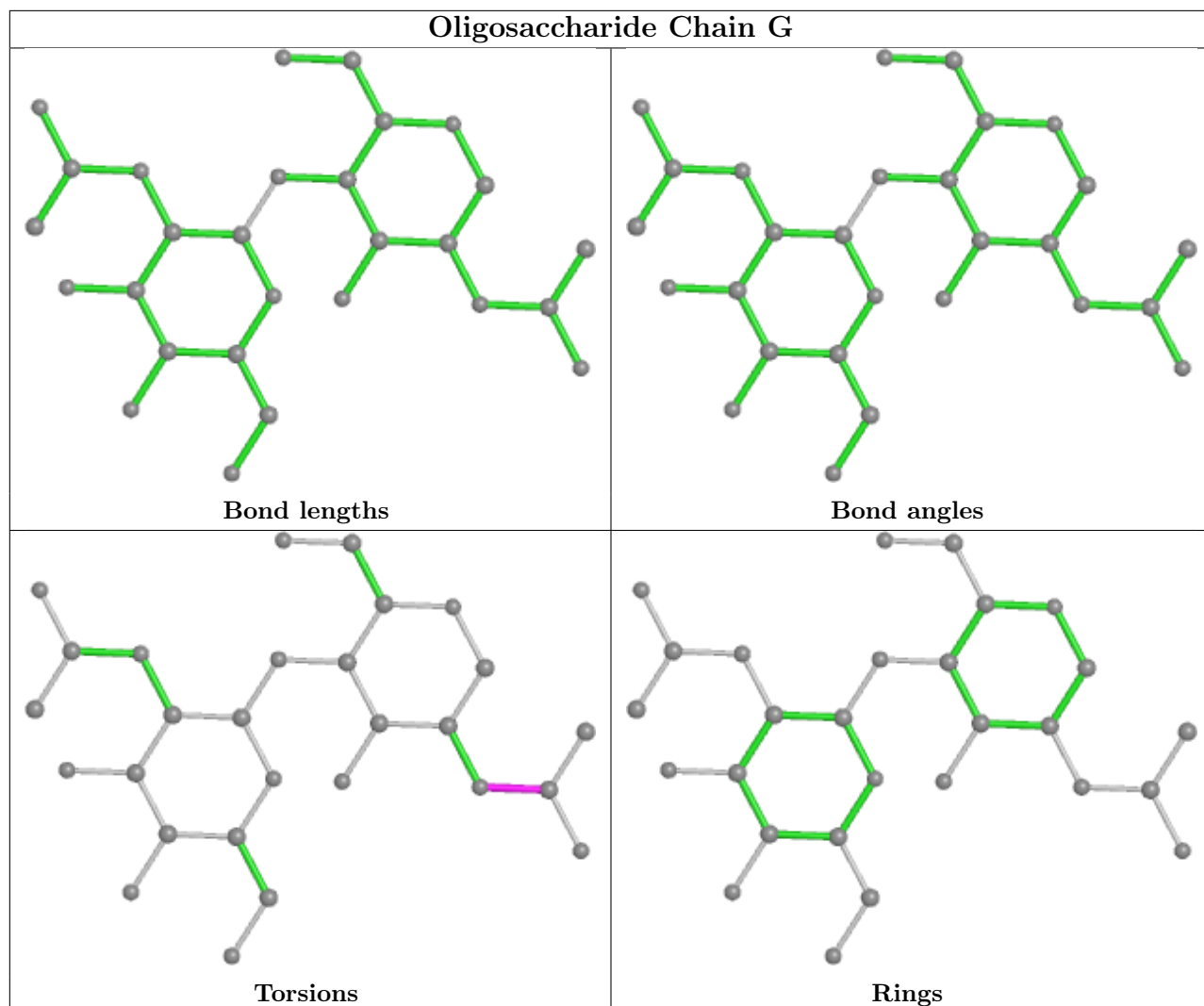
Mol	Chain	Res	Type	Clashes	Symm-Clashes
2	F	1	NAG	1	0
2	F	2	NAG	1	0

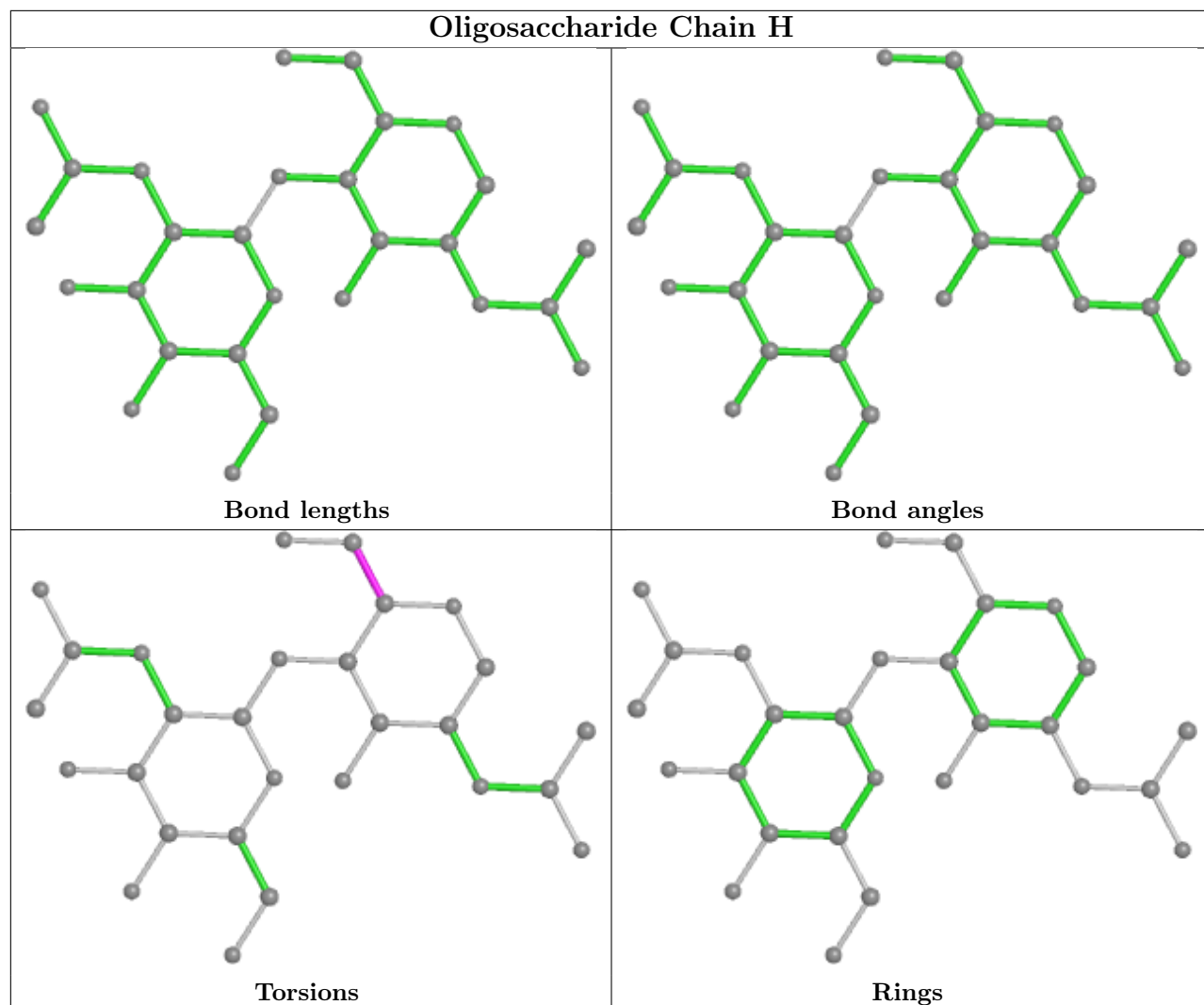
The following is a two-dimensional graphical depiction of Mogul quality analysis of bond lengths, bond angles, torsion angles, and ring geometry for oligosaccharide.

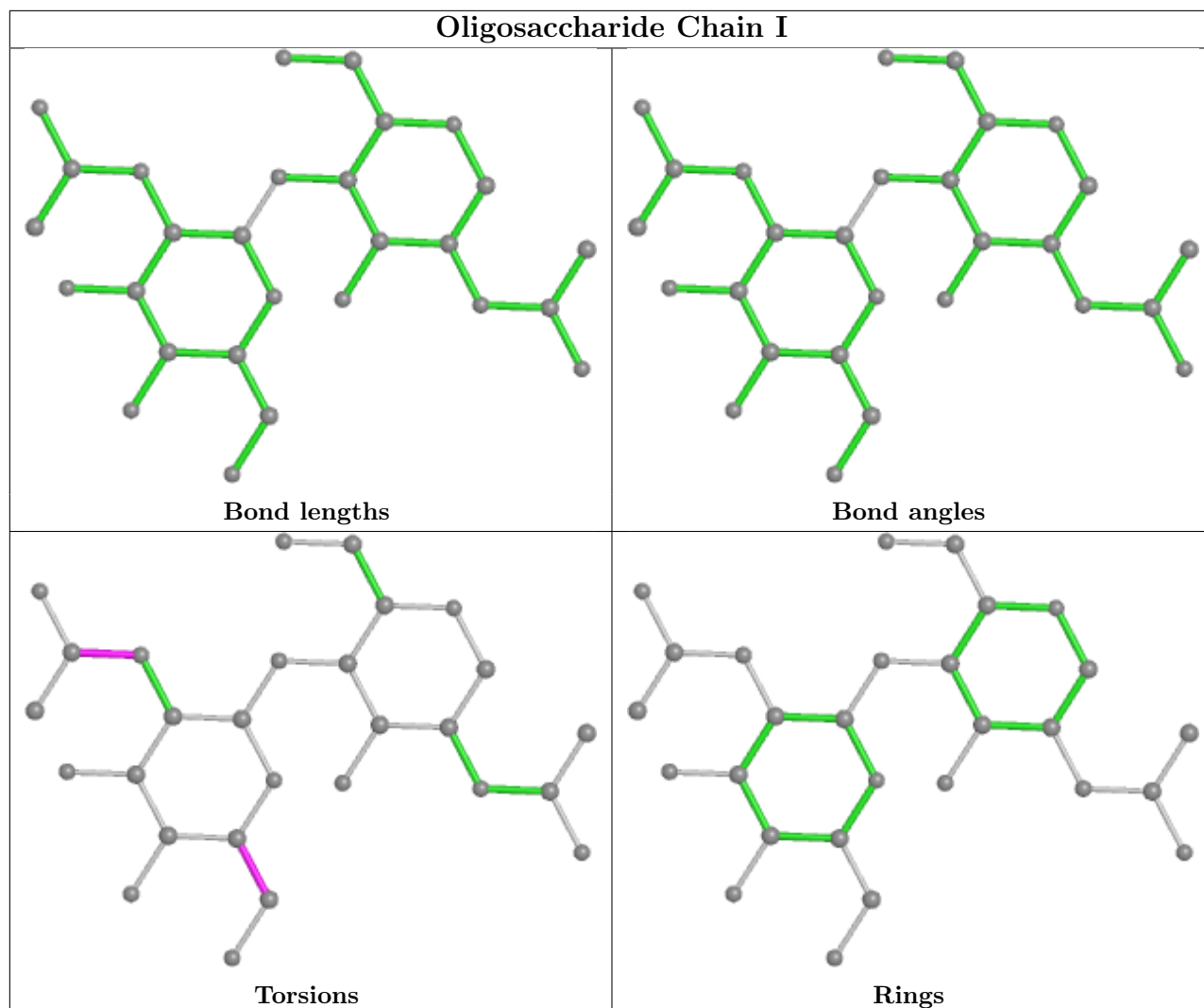












5.6 Ligand geometry [i](#)

39 ligands are modelled in this entry.

In the following table, the Counts columns list the number of bonds (or angles) for which Mogul statistics could be retrieved, the number of bonds (or angles) that are observed in the model and the number of bonds (or angles) that are defined in the Chemical Component Dictionary. The Link column lists molecule types, if any, to which the group is linked. The Z score for a bond length (or angle) is the number of standard deviations the observed value is removed from the expected value. A bond length (or angle) with $|Z| > 2$ is considered an outlier worth inspection. RMSZ is the root-mean-square of all Z scores of the bond lengths (or angles).

Mol	Type	Chain	Res	Link	Bond lengths			Bond angles		
					Counts	RMSZ	$\# Z > 2$	Counts	RMSZ	$\# Z > 2$
3	NAG	A	1211	1	14,14,15	0.26	0	17,19,21	0.47	0
3	NAG	C	1213	1	14,14,15	0.19	0	17,19,21	0.42	0
3	NAG	C	1203	1	14,14,15	0.28	0	17,19,21	0.46	0
3	NAG	C	1209	1	14,14,15	0.22	0	17,19,21	0.41	0

Mol	Type	Chain	Res	Link	Bond lengths			Bond angles		
					Counts	RMSZ	# Z > 2	Counts	RMSZ	# Z > 2
3	NAG	C	1201	1	14,14,15	0.18	0	17,19,21	0.39	0
3	NAG	C	1210	1	14,14,15	0.19	0	17,19,21	0.42	0
3	NAG	B	1210	1	14,14,15	0.29	0	17,19,21	0.36	0
3	NAG	A	1212	1	14,14,15	0.21	0	17,19,21	0.43	0
3	NAG	C	1205	1	14,14,15	0.33	0	17,19,21	0.62	1 (5%)
3	NAG	A	1203	1	14,14,15	0.28	0	17,19,21	0.46	0
3	NAG	B	1204	1	14,14,15	0.20	0	17,19,21	0.44	0
3	NAG	A	1205	1	14,14,15	0.24	0	17,19,21	0.41	0
3	NAG	B	1207	1	14,14,15	0.33	0	17,19,21	0.44	0
3	NAG	C	1202	1	14,14,15	0.39	0	17,19,21	0.42	0
3	NAG	B	1211	1	14,14,15	0.24	0	17,19,21	0.50	0
3	NAG	A	1210	1	14,14,15	0.20	0	17,19,21	0.47	0
3	NAG	C	1207	1	14,14,15	0.22	0	17,19,21	0.45	0
3	NAG	A	1213	1	14,14,15	0.30	0	17,19,21	0.60	1 (5%)
3	NAG	B	1209	1	14,14,15	0.21	0	17,19,21	0.42	0
3	NAG	C	1211	1	14,14,15	0.25	0	17,19,21	0.47	0
3	NAG	B	1208	1	14,14,15	0.19	0	17,19,21	0.46	0
3	NAG	C	1212	1	14,14,15	0.21	0	17,19,21	0.41	0
3	NAG	B	1201	1	14,14,15	0.22	0	17,19,21	0.43	0
3	NAG	A	1208	1	14,14,15	0.20	0	17,19,21	0.44	0
3	NAG	A	1202	1	14,14,15	0.28	0	17,19,21	0.30	0
3	NAG	C	1208	1	14,14,15	0.19	0	17,19,21	0.44	0
3	NAG	B	1212	1	14,14,15	0.20	0	17,19,21	0.44	0
3	NAG	B	1203	1	14,14,15	0.29	0	17,19,21	0.46	0
3	NAG	A	1207	1	14,14,15	0.19	0	17,19,21	0.40	0
3	NAG	A	1209	1	14,14,15	0.20	0	17,19,21	0.44	0
3	NAG	B	1202	1	14,14,15	0.26	0	17,19,21	0.56	0
3	NAG	B	1206	1	14,14,15	0.24	0	17,19,21	0.50	0
3	NAG	C	1206	1	14,14,15	0.21	0	17,19,21	0.48	0
3	NAG	A	1201	1	14,14,15	0.21	0	17,19,21	0.51	0
3	NAG	C	1204	1	14,14,15	0.22	0	17,19,21	0.39	0
3	NAG	B	1205	1	14,14,15	0.23	0	17,19,21	0.41	0
3	NAG	B	1213	1	14,14,15	0.19	0	17,19,21	0.44	0
3	NAG	A	1206	1	14,14,15	0.21	0	17,19,21	0.42	0
3	NAG	A	1204	1	14,14,15	0.20	0	17,19,21	0.42	0

In the following table, the Chirals column lists the number of chiral outliers, the number of chiral centers analysed, the number of these observed in the model and the number defined in the Chemical Component Dictionary. Similar counts are reported in the Torsion and Rings columns. '-' means no outliers of that kind were identified.

Mol	Type	Chain	Res	Link	Chirals	Torsions	Rings
3	NAG	A	1211	1	-	2/6/23/26	0/1/1/1
3	NAG	C	1213	1	-	2/6/23/26	0/1/1/1
3	NAG	C	1203	1	-	2/6/23/26	0/1/1/1
3	NAG	C	1209	1	-	2/6/23/26	0/1/1/1
3	NAG	C	1201	1	-	2/6/23/26	0/1/1/1
3	NAG	C	1210	1	-	2/6/23/26	0/1/1/1
3	NAG	B	1210	1	-	1/6/23/26	0/1/1/1
3	NAG	A	1212	1	-	2/6/23/26	0/1/1/1
3	NAG	C	1205	1	-	0/6/23/26	0/1/1/1
3	NAG	A	1203	1	-	2/6/23/26	0/1/1/1
3	NAG	B	1204	1	-	2/6/23/26	0/1/1/1
3	NAG	A	1205	1	-	2/6/23/26	0/1/1/1
3	NAG	B	1207	1	-	2/6/23/26	0/1/1/1
3	NAG	C	1202	1	-	4/6/23/26	0/1/1/1
3	NAG	B	1211	1	-	2/6/23/26	0/1/1/1
3	NAG	A	1210	1	-	2/6/23/26	0/1/1/1
3	NAG	C	1207	1	-	2/6/23/26	0/1/1/1
3	NAG	A	1213	1	-	2/6/23/26	0/1/1/1
3	NAG	B	1209	1	-	2/6/23/26	0/1/1/1
3	NAG	C	1211	1	-	1/6/23/26	0/1/1/1
3	NAG	B	1208	1	-	2/6/23/26	0/1/1/1
3	NAG	C	1212	1	-	2/6/23/26	0/1/1/1
3	NAG	B	1201	1	-	2/6/23/26	0/1/1/1
3	NAG	A	1208	1	-	0/6/23/26	0/1/1/1
3	NAG	A	1202	1	-	1/6/23/26	0/1/1/1
3	NAG	C	1208	1	-	2/6/23/26	0/1/1/1
3	NAG	B	1212	1	-	2/6/23/26	0/1/1/1
3	NAG	B	1203	1	-	2/6/23/26	0/1/1/1
3	NAG	A	1207	1	-	2/6/23/26	0/1/1/1
3	NAG	A	1209	1	-	0/6/23/26	0/1/1/1
3	NAG	B	1202	1	-	1/6/23/26	0/1/1/1
3	NAG	B	1206	1	-	1/6/23/26	0/1/1/1
3	NAG	C	1206	1	-	2/6/23/26	0/1/1/1
3	NAG	A	1201	1	-	2/6/23/26	0/1/1/1
3	NAG	C	1204	1	-	2/6/23/26	0/1/1/1
3	NAG	B	1205	1	-	2/6/23/26	0/1/1/1

Continued on next page...

Continued from previous page...

Mol	Type	Chain	Res	Link	Chirals	Torsions	Rings
3	NAG	B	1213	1	-	2/6/23/26	0/1/1/1
3	NAG	A	1206	1	-	2/6/23/26	0/1/1/1
3	NAG	A	1204	1	-	2/6/23/26	0/1/1/1

There are no bond length outliers.

All (2) bond angle outliers are listed below:

Mol	Chain	Res	Type	Atoms	Z	Observed(°)	Ideal(°)
3	C	1205	NAG	C1-O5-C5	2.18	115.15	112.19
3	A	1213	NAG	C1-O5-C5	2.06	114.98	112.19

There are no chirality outliers.

All (69) torsion outliers are listed below:

Mol	Chain	Res	Type	Atoms
3	C	1210	NAG	C4-C5-C6-O6
3	A	1205	NAG	O5-C5-C6-O6
3	B	1201	NAG	O5-C5-C6-O6
3	B	1207	NAG	O5-C5-C6-O6
3	C	1202	NAG	C4-C5-C6-O6
3	C	1209	NAG	C4-C5-C6-O6
3	C	1204	NAG	C4-C5-C6-O6
3	A	1210	NAG	O5-C5-C6-O6
3	B	1208	NAG	C4-C5-C6-O6
3	A	1207	NAG	C4-C5-C6-O6
3	A	1212	NAG	C4-C5-C6-O6
3	C	1208	NAG	C4-C5-C6-O6
3	A	1201	NAG	O5-C5-C6-O6
3	C	1212	NAG	O5-C5-C6-O6
3	B	1207	NAG	C4-C5-C6-O6
3	A	1211	NAG	C4-C5-C6-O6
3	A	1204	NAG	O5-C5-C6-O6
3	A	1206	NAG	O5-C5-C6-O6
3	C	1207	NAG	O5-C5-C6-O6
3	B	1211	NAG	O5-C5-C6-O6
3	B	1212	NAG	O5-C5-C6-O6
3	C	1209	NAG	O5-C5-C6-O6
3	C	1210	NAG	O5-C5-C6-O6
3	B	1212	NAG	C4-C5-C6-O6
3	B	1201	NAG	C4-C5-C6-O6

Continued on next page...

Continued from previous page...

Mol	Chain	Res	Type	Atoms
3	B	1205	NAG	C4-C5-C6-O6
3	A	1206	NAG	C4-C5-C6-O6
3	A	1212	NAG	O5-C5-C6-O6
3	C	1202	NAG	O5-C5-C6-O6
3	C	1204	NAG	O5-C5-C6-O6
3	B	1211	NAG	C4-C5-C6-O6
3	B	1208	NAG	O5-C5-C6-O6
3	A	1211	NAG	O5-C5-C6-O6
3	C	1201	NAG	O5-C5-C6-O6
3	C	1208	NAG	O5-C5-C6-O6
3	A	1205	NAG	C4-C5-C6-O6
3	C	1212	NAG	C4-C5-C6-O6
3	B	1213	NAG	O5-C5-C6-O6
3	A	1210	NAG	C4-C5-C6-O6
3	C	1206	NAG	C4-C5-C6-O6
3	C	1201	NAG	C4-C5-C6-O6
3	C	1202	NAG	C8-C7-N2-C2
3	C	1202	NAG	O7-C7-N2-C2
3	B	1213	NAG	C4-C5-C6-O6
3	A	1201	NAG	C4-C5-C6-O6
3	C	1213	NAG	O5-C5-C6-O6
3	C	1207	NAG	C4-C5-C6-O6
3	A	1207	NAG	O5-C5-C6-O6
3	A	1204	NAG	C4-C5-C6-O6
3	B	1204	NAG	O5-C5-C6-O6
3	C	1213	NAG	C4-C5-C6-O6
3	B	1209	NAG	C4-C5-C6-O6
3	B	1204	NAG	C4-C5-C6-O6
3	B	1205	NAG	O5-C5-C6-O6
3	A	1213	NAG	O5-C5-C6-O6
3	B	1210	NAG	O5-C5-C6-O6
3	C	1206	NAG	O5-C5-C6-O6
3	A	1213	NAG	C4-C5-C6-O6
3	B	1209	NAG	O5-C5-C6-O6
3	C	1203	NAG	C4-C5-C6-O6
3	B	1203	NAG	C4-C5-C6-O6
3	C	1203	NAG	O5-C5-C6-O6
3	B	1203	NAG	O5-C5-C6-O6
3	B	1202	NAG	C3-C2-N2-C7
3	C	1211	NAG	O5-C5-C6-O6
3	B	1206	NAG	C4-C5-C6-O6
3	A	1202	NAG	C4-C5-C6-O6

Continued on next page...

Continued from previous page...

Mol	Chain	Res	Type	Atoms
3	A	1203	NAG	C4-C5-C6-O6
3	A	1203	NAG	O5-C5-C6-O6

There are no ring outliers.

4 monomers are involved in 4 short contacts:

Mol	Chain	Res	Type	Clashes	Symm-Clashes
3	A	1212	NAG	1	0
3	C	1205	NAG	1	0
3	A	1202	NAG	1	0
3	B	1212	NAG	1	0

5.7 Other polymers [i](#)

There are no such residues in this entry.

5.8 Polymer linkage issues [i](#)

There are no chain breaks in this entry.

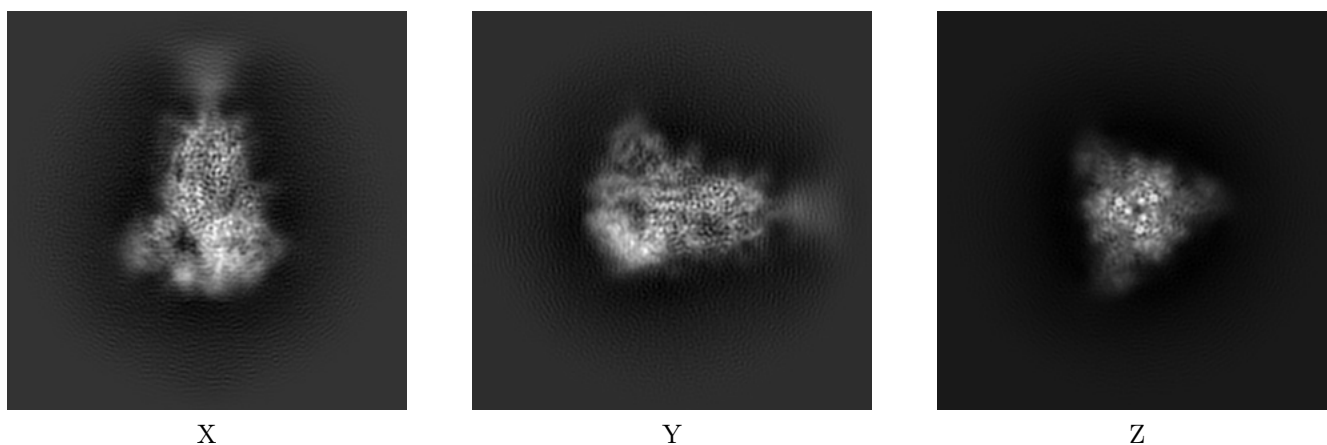
6 Map visualisation [i](#)

This section contains visualisations of the EMDB entry EMD-32480. These allow visual inspection of the internal detail of the map and identification of artifacts.

No raw map or half-maps were deposited for this entry and therefore no images, graphs, etc. pertaining to the raw map can be shown.

6.1 Orthogonal projections [i](#)

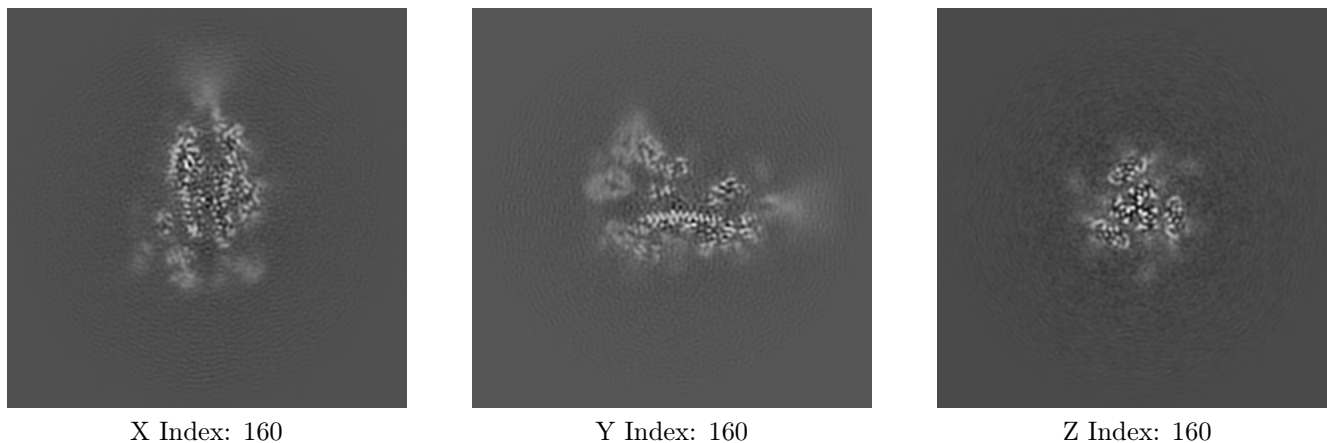
6.1.1 Primary map



The images above show the map projected in three orthogonal directions.

6.2 Central slices [i](#)

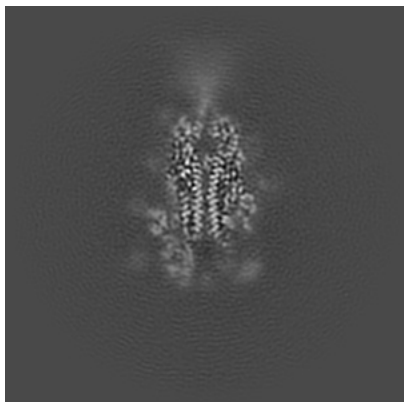
6.2.1 Primary map



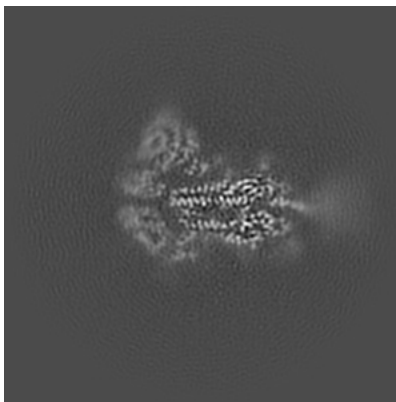
The images above show central slices of the map in three orthogonal directions.

6.3 Largest variance slices [i](#)

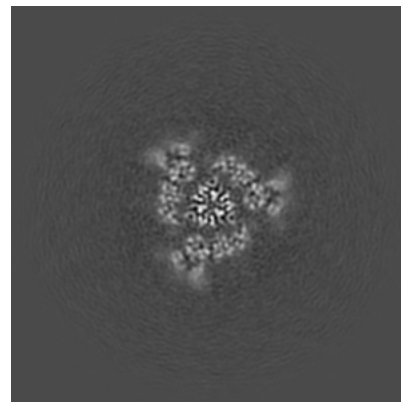
6.3.1 Primary map



X Index: 164



Y Index: 168

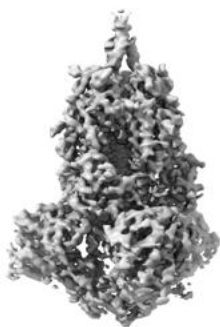


Z Index: 144

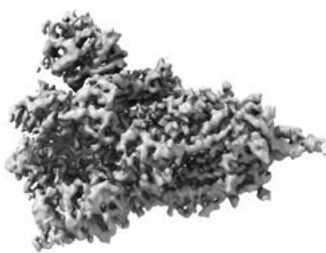
The images above show the largest variance slices of the map in three orthogonal directions.

6.4 Orthogonal surface views [i](#)

6.4.1 Primary map



X



Y



Z

The images above show the 3D surface view of the map at the recommended contour level 0.34. These images, in conjunction with the slice images, may facilitate assessment of whether an appropriate contour level has been provided.

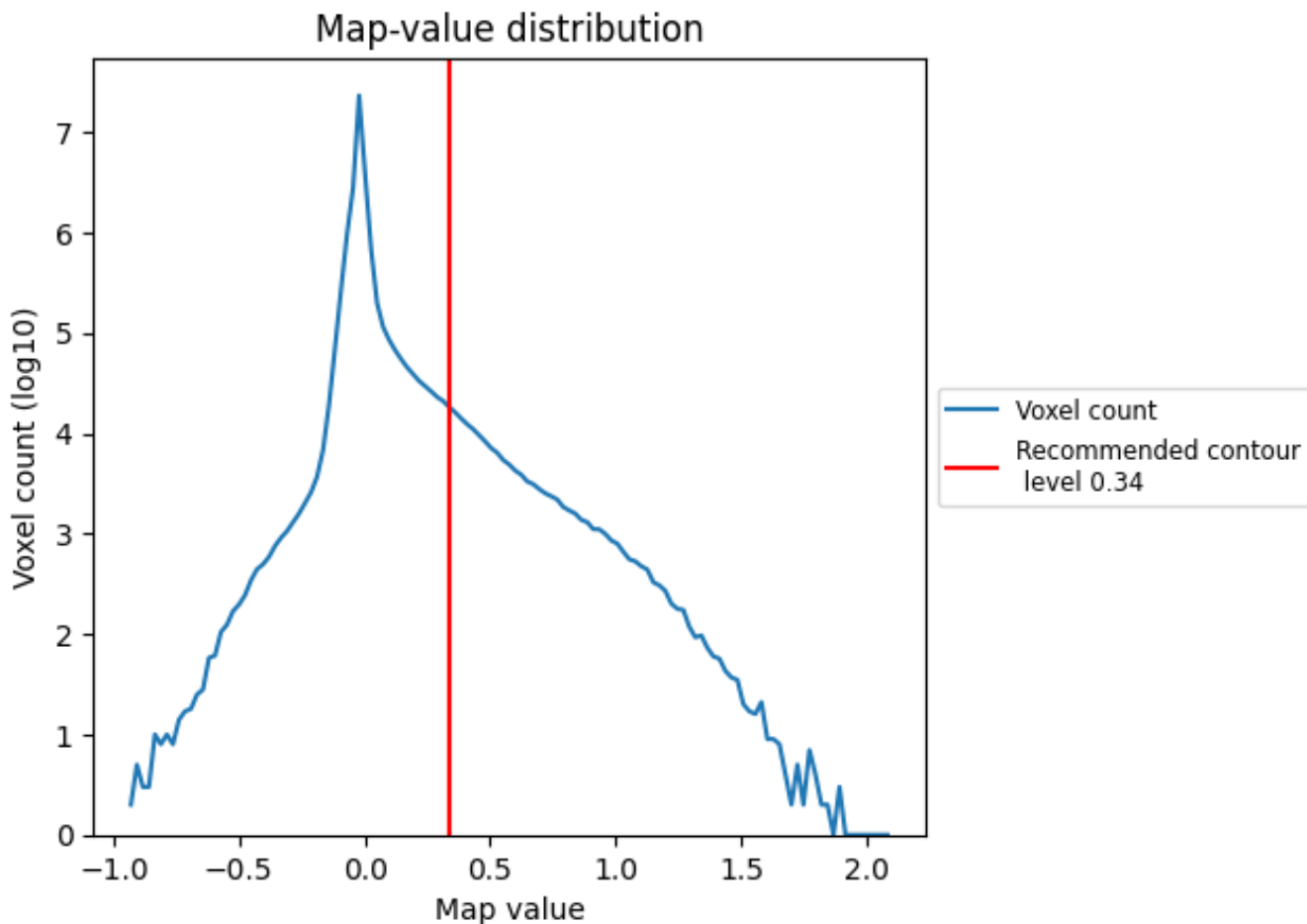
6.5 Mask visualisation

This section was not generated. No masks/segmentation were deposited.

7 Map analysis [i](#)

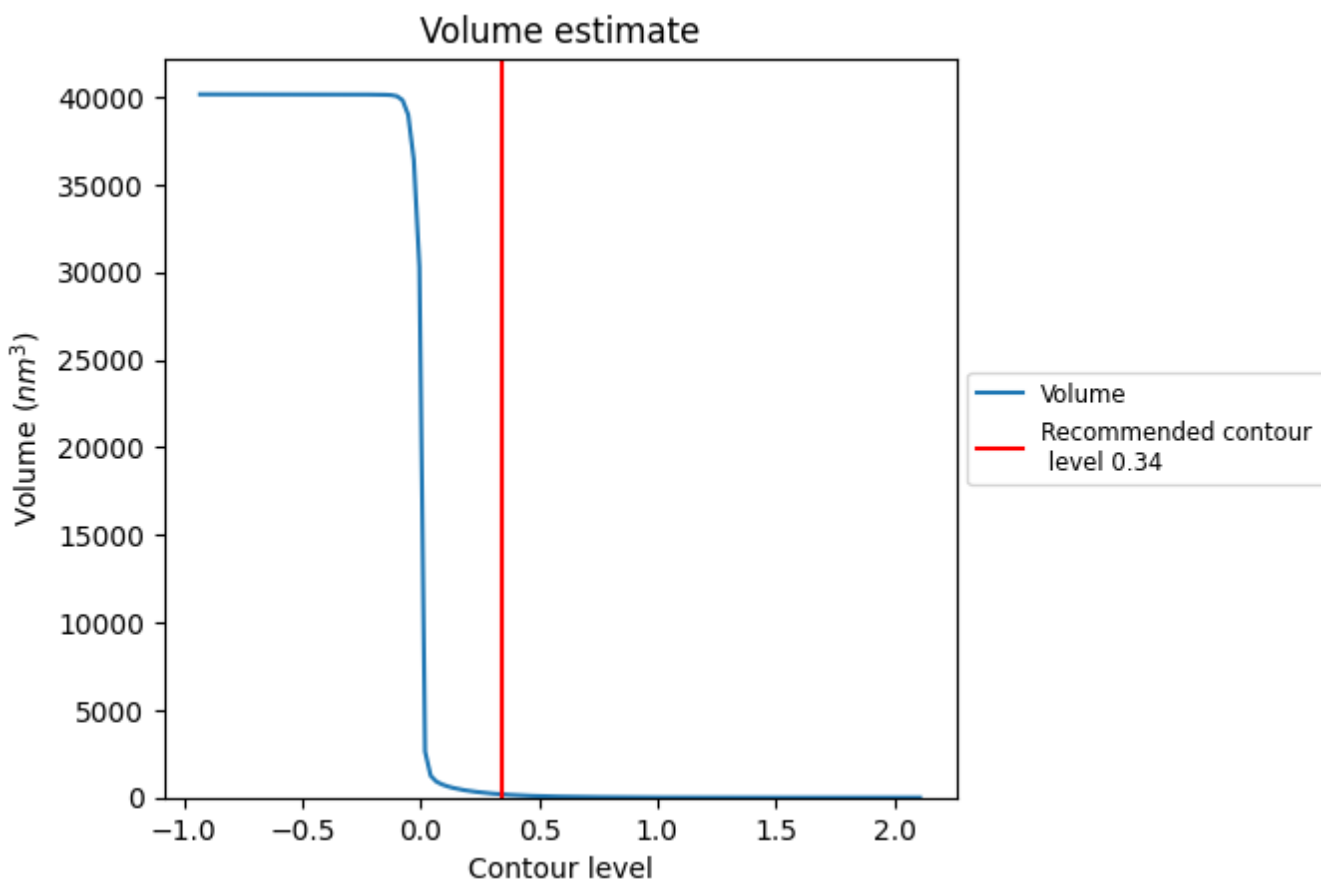
This section contains the results of statistical analysis of the map.

7.1 Map-value distribution [i](#)



The map-value distribution is plotted in 128 intervals along the x-axis. The y-axis is logarithmic. A spike in this graph at zero usually indicates that the volume has been masked.

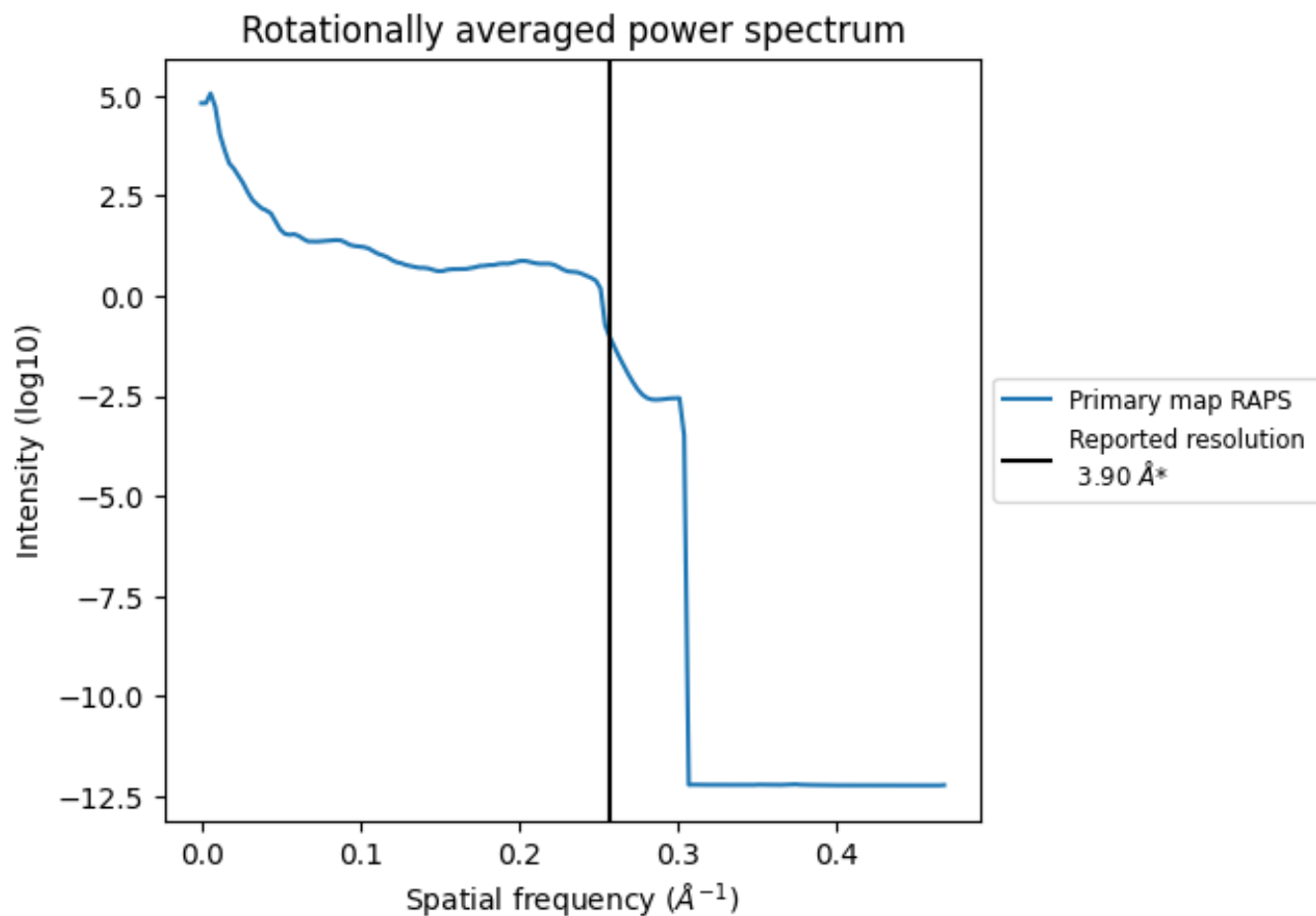
7.2 Volume estimate [i](#)



The volume at the recommended contour level is 189 nm³; this corresponds to an approximate mass of 170 kDa.

The volume estimate graph shows how the enclosed volume varies with the contour level. The recommended contour level is shown as a vertical line and the intersection between the line and the curve gives the volume of the enclosed surface at the given level.

7.3 Rotationally averaged power spectrum [i](#)



*Reported resolution corresponds to spatial frequency of 0.256 Å⁻¹

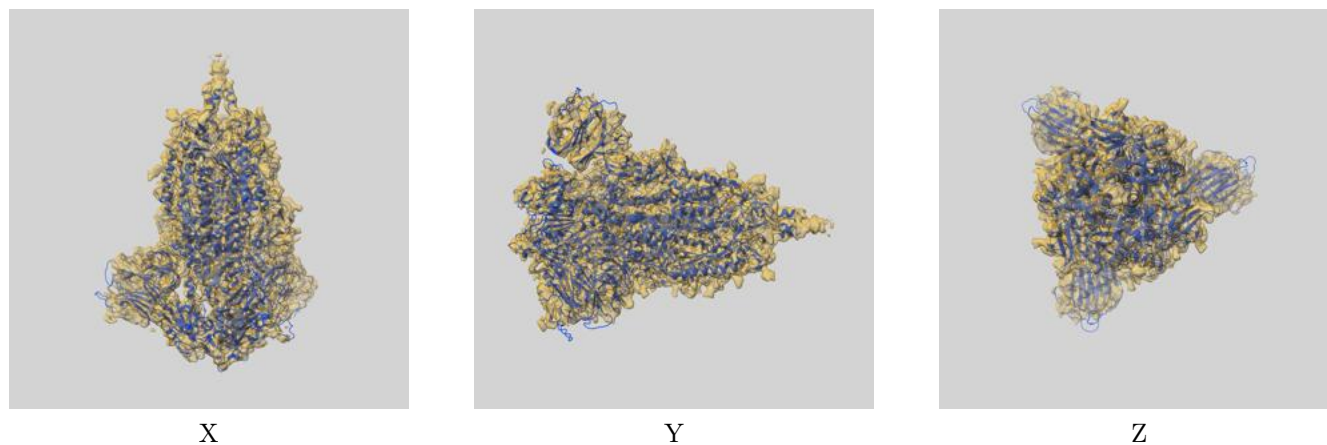
8 Fourier-Shell correlation

This section was not generated. No FSC curve or half-maps provided.

9 Map-model fit [i](#)

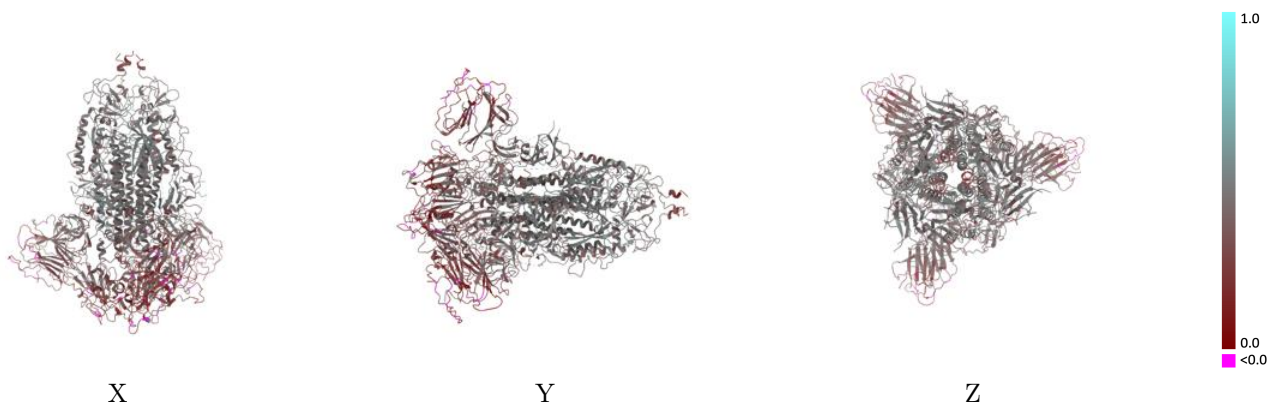
This section contains information regarding the fit between EMDB map EMD-32480 and PDB model 7WG8. Per-residue inclusion information can be found in section [3](#) on page [9](#).

9.1 Map-model overlay [i](#)



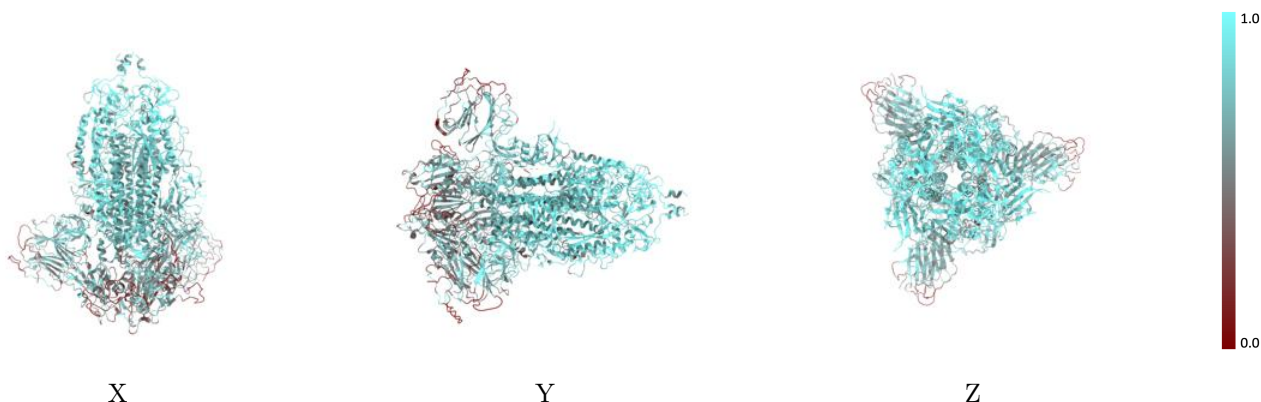
The images above show the 3D surface view of the map at the recommended contour level 0.34 at 50% transparency in yellow overlaid with a ribbon representation of the model coloured in blue. These images allow for the visual assessment of the quality of fit between the atomic model and the map.

9.2 Q-score mapped to coordinate model [i](#)



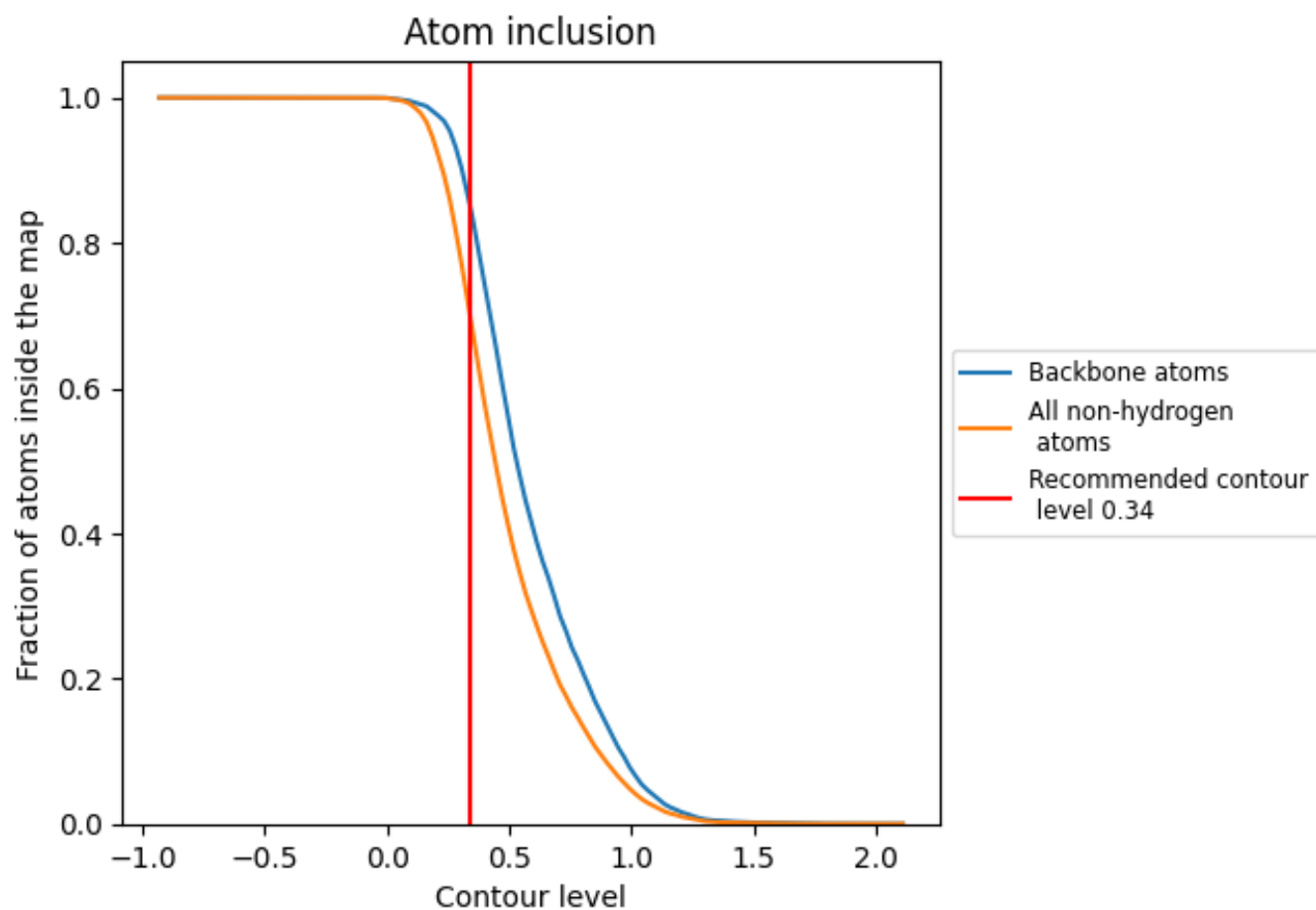
The images above show the model with each residue coloured according to its Q-score. This shows their resolvability in the map with higher Q-score values reflecting better resolvability. Please note: Q-score is calculating the resolvability of atoms, and thus high values are only expected at resolutions at which atoms can be resolved. Low Q-score values may therefore be expected for many entries.

9.3 Atom inclusion mapped to coordinate model [i](#)



The images above show the model with each residue coloured according to its atom inclusion. This shows to what extent they are inside the map at the recommended contour level (0.34).





















9.4 Atom inclusion [i](#)



At the recommended contour level, 85% of all backbone atoms, 70% of all non-hydrogen atoms, are inside the map.

9.5 Map-model fit summary [i](#)

The table lists the average atom inclusion at the recommended contour level (0.34) and Q-score for the entire model and for each chain.

Chain	Atom inclusion	Q-score
All	 0.6977	 0.3740
A	 0.6978	 0.3730
B	 0.6970	 0.3740
C	 0.6998	 0.3730
D	 0.6071	 0.4380
E	 0.6429	 0.4230
F	 0.6429	 0.4430
G	 0.6429	 0.4310
H	 0.6071	 0.4410
I	 0.6071	 0.4380

