



Full wwPDB X-ray Structure Validation Report ⓘ

May 15, 2020 – 01:14 pm BST

PDB ID : 5W6O
Title : Choline Kinase Alpha in Complex with TCD-717
Authors : Kall, S.K.; Lavie, A.
Deposited on : 2017-06-16
Resolution : 2.35 Å(reported)

This is a Full wwPDB X-ray Structure Validation Report for a publicly released PDB entry.

We welcome your comments at validation@mail.wwpdb.org

A user guide is available at

<https://www.wwpdb.org/validation/2017/XrayValidationReportHelp>

with specific help available everywhere you see the ⓘ symbol.

The following versions of software and data (see [references ⓘ](#)) were used in the production of this report:

MolProbity : 4.02b-467
Mogul : 1.8.5 (274361), CSD as541be (2020)
Xtriage (Phenix) : 1.13
EDS : 2.11
buster-report : 1.1.7 (2018)
Percentile statistics : 20191225.v01 (using entries in the PDB archive December 25th 2019)
Refmac : 5.8.0158
CCP4 : 7.0.044 (Gargrove)
Ideal geometry (proteins) : Engh & Huber (2001)
Ideal geometry (DNA, RNA) : Parkinson et al. (1996)
Validation Pipeline (wwPDB-VP) : 2.11

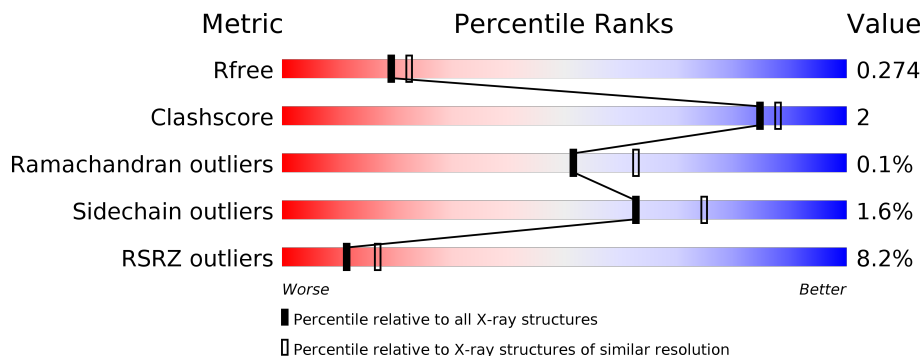
1 Overall quality at a glance

The following experimental techniques were used to determine the structure:

X-RAY DIFFRACTION

The reported resolution of this entry is 2.35 Å.

Percentile scores (ranging between 0-100) for global validation metrics of the entry are shown in the following graphic. The table shows the number of entries on which the scores are based.



Metric	Whole archive (#Entries)	Similar resolution (#Entries, resolution range(Å))
R_{free}	130704	1164 (2.36-2.36)
Clashscore	141614	1232 (2.36-2.36)
Ramachandran outliers	138981	1211 (2.36-2.36)
Sidechain outliers	138945	1212 (2.36-2.36)
RSRZ outliers	127900	1150 (2.36-2.36)

The table below summarises the geometric issues observed across the polymeric chains and their fit to the electron density. The red, orange, yellow and green segments on the lower bar indicate the fraction of residues that contain outliers for ≥ 3 , 2, 1 and 0 types of geometric quality criteria respectively. A grey segment represents the fraction of residues that are not modelled. The numeric value for each fraction is indicated below the corresponding segment, with a dot representing fractions $\leq 5\%$. The upper red bar (where present) indicates the fraction of residues that have poor fit to the electron density. The numeric value is given above the bar.

Mol	Chain	Length	Quality of chain
1	A	378	
1	B	378	

2 Entry composition [i](#)

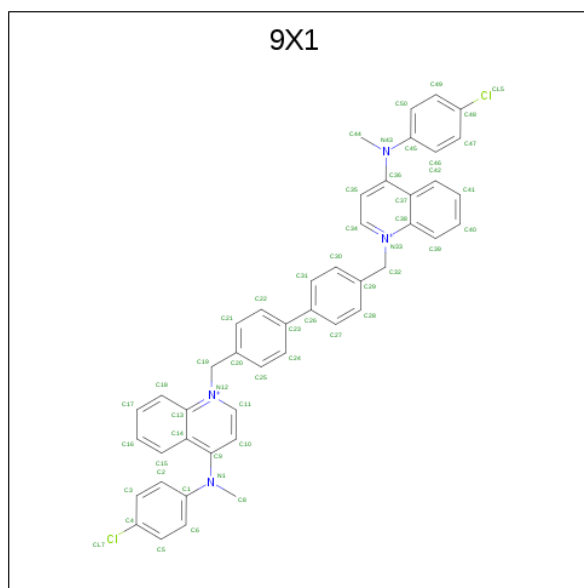
There are 5 unique types of molecules in this entry. The entry contains 6258 atoms, of which 0 are hydrogens and 0 are deuteriums.

In the tables below, the ZeroOcc column contains the number of atoms modelled with zero occupancy, the AltConf column contains the number of residues with at least one atom in alternate conformation and the Trace column contains the number of residues modelled with at most 2 atoms.

- Molecule 1 is a protein called Choline kinase alpha.

Mol	Chain	Residues	Atoms					ZeroOcc	AltConf	Trace
			Total	C	N	O	S			
1	A	352	Total 2939	C 1903	N 494	O 526	S 16	0	1	0
1	B	353	Total 3000	C 1937	N 511	O 536	S 16	0	6	0

- Molecule 2 is 1,1'-[[1,1'-biphenyl]-4,4'-diylbis(methylene)]bis{4-[(4-chlorophenyl)(methyl)amino]quinolin-1-ium} (three-letter code: 9X1) (formula: C₄₆H₃₈Cl₂N₄).



Mol	Chain	Residues	Atoms				ZeroOcc	AltConf
			Total	C	Cl	N		
2	A	1	Total 52	C 46	Cl 2	N 4	0	0
2	B	1	Total 52	C 46	Cl 2	N 4	0	0

- Molecule 3 is 2-(N-MORPHOLINO)-ETHANESULFONIC ACID (three-letter code: MES) (formula: C₆H₁₃NO₄S).



Mol	Chain	Residues	Atoms					ZeroOcc	AltConf	
			Total	C	N	O	S			
3	A	1	Total	12	6	1	4	1	0	0
3	B	1	Total	12	6	1	4	1	0	0

- Molecule 4 is 1,2-ETHANEDIOL (three-letter code: EDO) (formula: C₂H₆O₂).



Mol	Chain	Residues	Atoms			ZeroOcc	AltConf	
			Total	C	O			
4	A	1	Total	4	2	2	0	0
4	A	1	Total	4	2	2	0	0

Continued on next page...

Continued from previous page...

Mol	Chain	Residues	Atoms			ZeroOcc	AltConf
4	A	1	Total	C	O	0	0
			4	2	2		
4	B	1	Total	C	O	0	0
			4	2	2		

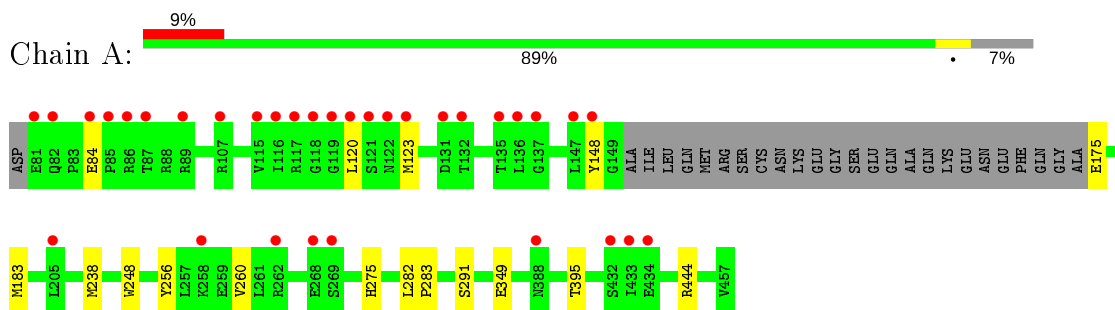
- Molecule 5 is water.

Mol	Chain	Residues	Atoms		ZeroOcc	AltConf
5	A	80	Total	O	0	0
			80	80		
5	B	95	Total	O	0	0
			95	95		

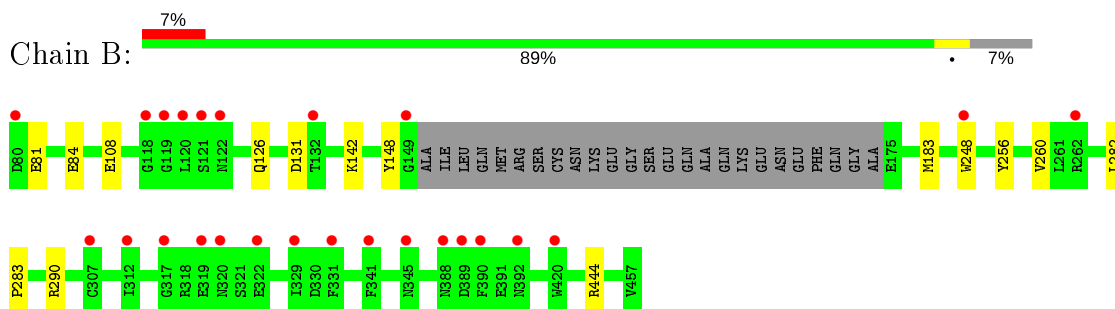
3 Residue-property plots [i](#)

These plots are drawn for all protein, RNA and DNA chains in the entry. The first graphic for a chain summarises the proportions of the various outlier classes displayed in the second graphic. The second graphic shows the sequence view annotated by issues in geometry and electron density. Residues are color-coded according to the number of geometric quality criteria for which they contain at least one outlier: green = 0, yellow = 1, orange = 2 and red = 3 or more. A red dot above a residue indicates a poor fit to the electron density ($RSRZ > 2$). Stretches of 2 or more consecutive residues without any outlier are shown as a green connector. Residues present in the sample, but not in the model, are shown in grey.

- Molecule 1: Choline kinase alpha



- Molecule 1: Choline kinase alpha



4 Data and refinement statistics

Property	Value	Source
Space group	P 21 21 21	Depositor
Cell constants a, b, c, α , β , γ	55.95Å 122.35Å 131.40Å 90.00° 90.00° 90.00°	Depositor
Resolution (Å)	89.54 – 2.35 28.94 – 2.35	Depositor EDS
% Data completeness (in resolution range)	99.4 (89.54-2.35) 99.5 (28.94-2.35)	Depositor EDS
R_{merge}	(Not available)	Depositor
R_{sym}	(Not available)	Depositor
$\langle I/\sigma(I) \rangle$ ¹	1.26 (at 2.36Å)	Xtrriage
Refinement program	REFMAC 5.8.0158	Depositor
R, R_{free}	0.207 , 0.268 0.211 , 0.274	Depositor DCC
R_{free} test set	1951 reflections (5.11%)	wwPDB-VP
Wilson B-factor (Å ²)	45.9	Xtrriage
Anisotropy	0.063	Xtrriage
Bulk solvent k_{sol} (e/Å ³), B_{sol} (Å ²)	0.31 , 32.6	EDS
L-test for twinning ²	$\langle L \rangle = 0.48$, $\langle L^2 \rangle = 0.32$	Xtrriage
Estimated twinning fraction	No twinning to report.	Xtrriage
F_o, F_c correlation	0.95	EDS
Total number of atoms	6258	wwPDB-VP
Average B, all atoms (Å ²)	54.0	wwPDB-VP

Xtrriage's analysis on translational NCS is as follows: *The largest off-origin peak in the Patterson function is 4.12% of the height of the origin peak. No significant pseudotranslation is detected.*

¹ Intensities estimated from amplitudes.

² Theoretical values of $\langle |L| \rangle$, $\langle L^2 \rangle$ for acentric reflections are 0.5, 0.333 respectively for untwinned datasets, and 0.375, 0.2 for perfectly twinned datasets.

5 Model quality [i](#)

5.1 Standard geometry [i](#)

Bond lengths and bond angles in the following residue types are not validated in this section: 9X1, EDO, MES

The Z score for a bond length (or angle) is the number of standard deviations the observed value is removed from the expected value. A bond length (or angle) with $|Z| > 5$ is considered an outlier worth inspection. RMSZ is the root-mean-square of all Z scores of the bond lengths (or angles).

Mol	Chain	Bond lengths		Bond angles	
		RMSZ	# $ Z > 5$	RMSZ	# $ Z > 5$
1	A	0.62	0/3017	0.75	2/4063 (0.0%)
1	B	0.61	0/3079	0.76	2/4144 (0.0%)
All	All	0.61	0/6096	0.75	4/8207 (0.0%)

There are no bond length outliers.

All (4) bond angle outliers are listed below:

Mol	Chain	Res	Type	Atoms	Z	Observed(°)	Ideal(°)
1	B	444	ARG	NE-CZ-NH1	6.43	123.52	120.30
1	B	290	ARG	NE-CZ-NH2	-5.89	117.36	120.30
1	A	444	ARG	NE-CZ-NH1	5.04	122.82	120.30
1	A	238	MET	CG-SD-CE	-5.03	92.16	100.20

There are no chirality outliers.

There are no planarity outliers.

5.2 Too-close contacts [i](#)

In the following table, the Non-H and H(model) columns list the number of non-hydrogen atoms and hydrogen atoms in the chain respectively. The H(added) column lists the number of hydrogen atoms added and optimized by MolProbity. The Clashes column lists the number of clashes within the asymmetric unit, whereas Symm-Clashes lists symmetry related clashes.

Mol	Chain	Non-H	H(model)	H(added)	Clashes	Symm-Clashes
1	A	2939	0	2904	13	0
1	B	3000	0	2957	10	0
2	A	52	0	0	9	0
2	B	52	0	0	9	0
3	A	12	0	13	0	0

Continued on next page...

Continued from previous page...

Mol	Chain	Non-H	H(model)	H(added)	Clashes	Symm-Clashes
3	B	12	0	13	0	0
4	A	12	0	18	0	0
4	B	4	0	6	0	0
5	A	80	0	0	4	0
5	B	95	0	0	0	0
All	All	6258	0	5911	27	0

The all-atom clashscore is defined as the number of clashes found per 1000 atoms (including hydrogen atoms). The all-atom clashscore for this structure is 2.

All (27) close contacts within the same asymmetric unit are listed below, sorted by their clash magnitude.

Atom-1	Atom-2	Interatomic distance (Å)	Clash overlap (Å)
1:A:248[B]:TRP:HE1	2:A:501:9X1:C16	1.37	1.35
1:A:248[B]:TRP:NE1	2:A:501:9X1:C16	2.12	1.11
1:A:248[B]:TRP:HE1	2:A:501:9X1:C15	1.63	1.10
1:B:248[B]:TRP:HE1	2:B:501:9X1:C41	1.75	0.99
1:A:248[B]:TRP:NE1	2:A:501:9X1:C15	2.35	0.85
1:B:248[B]:TRP:NE1	2:B:501:9X1:C41	2.45	0.79
1:A:148:TYR:HB3	2:A:501:9X1:C40	2.26	0.66
1:B:248[B]:TRP:HE1	2:B:501:9X1:C42	2.14	0.61
1:A:248[B]:TRP:CE2	2:A:501:9X1:C15	2.90	0.54
1:A:248[B]:TRP:CZ2	2:A:501:9X1:C15	2.93	0.52
2:B:501:9X1:C45	2:B:501:9X1:C42	2.90	0.49
1:B:148:TYR:HB3	2:B:501:9X1:C18	2.43	0.48
2:A:501:9X1:C15	2:A:501:9X1:C2	2.91	0.48
1:A:175:GLU:N	5:A:602:HOH:O	2.47	0.47
1:A:349:GLU:O	5:A:601:HOH:O	2.20	0.47
2:A:501:9X1:C1	2:A:501:9X1:C15	2.91	0.47
1:B:256:TYR:O	1:B:260:VAL:HG23	2.15	0.47
1:A:256:TYR:O	1:A:260:VAL:HG23	2.16	0.46
2:B:501:9X1:C46	2:B:501:9X1:C42	2.93	0.46
1:A:275:HIS:HD2	5:A:667:HOH:O	1.97	0.45
1:B:126:GLN:OE1	1:B:142:LYS:HE3	2.16	0.45
1:A:275:HIS:CD2	5:A:667:HOH:O	2.71	0.44
1:B:248[B]:TRP:CZ2	2:B:501:9X1:C42	3.00	0.43
1:B:248[B]:TRP:HZ2	2:B:501:9X1:C42	2.32	0.42
1:B:148:TYR:HB3	2:B:501:9X1:C17	2.50	0.41
1:A:282:LEU:N	1:A:283:PRO:CD	2.83	0.41
1:B:282:LEU:N	1:B:283:PRO:CD	2.84	0.41

There are no symmetry-related clashes.

5.3 Torsion angles [i](#)

5.3.1 Protein backbone [i](#)

In the following table, the Percentiles column shows the percent Ramachandran outliers of the chain as a percentile score with respect to all X-ray entries followed by that with respect to entries of similar resolution.

The Analysed column shows the number of residues for which the backbone conformation was analysed, and the total number of residues.

Mol	Chain	Analysed	Favoured	Allowed	Outliers	Percentiles	
1	A	349/378 (92%)	337 (97%)	11 (3%)	1 (0%)	41	47
1	B	355/378 (94%)	343 (97%)	12 (3%)	0	100	100
All	All	704/756 (93%)	680 (97%)	23 (3%)	1 (0%)	51	63

All (1) Ramachandran outliers are listed below:

Mol	Chain	Res	Type
1	A	395	THR

5.3.2 Protein sidechains [i](#)

In the following table, the Percentiles column shows the percent sidechain outliers of the chain as a percentile score with respect to all X-ray entries followed by that with respect to entries of similar resolution.

The Analysed column shows the number of residues for which the sidechain conformation was analysed, and the total number of residues.

Mol	Chain	Analysed	Rotameric	Outliers	Percentiles	
1	A	317/338 (94%)	312 (98%)	5 (2%)	62	75
1	B	323/338 (96%)	318 (98%)	5 (2%)	65	76
All	All	640/676 (95%)	630 (98%)	10 (2%)	62	75

All (10) residues with a non-rotameric sidechain are listed below:

Mol	Chain	Res	Type
1	A	84	GLU
1	A	120	LEU

Continued on next page...

Continued from previous page...

Mol	Chain	Res	Type
1	A	123	MET
1	A	183	MET
1	A	291	SER
1	B	81	GLU
1	B	84	GLU
1	B	108	GLU
1	B	131	ASP
1	B	183	MET

Some sidechains can be flipped to improve hydrogen bonding and reduce clashes. There are no such sidechains identified.

5.3.3 RNA [i](#)

There are no RNA molecules in this entry.

5.4 Non-standard residues in protein, DNA, RNA chains [i](#)

There are no non-standard protein/DNA/RNA residues in this entry.

5.5 Carbohydrates [i](#)

There are no carbohydrates in this entry.

5.6 Ligand geometry [i](#)

8 ligands are modelled in this entry.

In the following table, the Counts columns list the number of bonds (or angles) for which Mogul statistics could be retrieved, the number of bonds (or angles) that are observed in the model and the number of bonds (or angles) that are defined in the Chemical Component Dictionary. The Link column lists molecule types, if any, to which the group is linked. The Z score for a bond length (or angle) is the number of standard deviations the observed value is removed from the expected value. A bond length (or angle) with $|Z| > 2$ is considered an outlier worth inspection. RMSZ is the root-mean-square of all Z scores of the bond lengths (or angles).

Mol	Type	Chain	Res	Link	Bond lengths			Bond angles		
					Counts	RMSZ	$\# Z > 2$	Counts	RMSZ	$\# Z > 2$
4	EDO	A	504	-	3,3,3	0.63	0	2,2,2	0.31	0
4	EDO	A	503	-	3,3,3	0.67	0	2,2,2	0.06	0

Mol	Type	Chain	Res	Link	Bond lengths			Bond angles		
					Counts	RMSZ	# Z > 2	Counts	RMSZ	# Z > 2
2	9X1	A	501	1	59,59,59	1.69	12 (20%)	84,84,84	1.78	19 (22%)
3	MES	B	502	-	12,12,12	2.14	1 (8%)	14,16,16	1.72	3 (21%)
4	EDO	A	505	-	3,3,3	0.55	0	2,2,2	0.16	0
3	MES	A	502	-	12,12,12	1.89	1 (8%)	14,16,16	1.75	3 (21%)
2	9X1	B	501	1	59,59,59	1.94	12 (20%)	84,84,84	1.67	17 (20%)
4	EDO	B	503	-	3,3,3	0.58	0	2,2,2	0.36	0

In the following table, the Chirals column lists the number of chiral outliers, the number of chiral centers analysed, the number of these observed in the model and the number defined in the Chemical Component Dictionary. Similar counts are reported in the Torsion and Rings columns. '-' means no outliers of that kind were identified.

Mol	Type	Chain	Res	Link	Chirals	Torsions	Rings
4	EDO	A	504	-	-	1/1/1/1	-
4	EDO	A	503	-	-	1/1/1/1	-
2	9X1	A	501	1	-	9/28/28/28	0/8/8/8
3	MES	B	502	-	-	2/6/14/14	0/1/1/1
4	EDO	A	505	-	-	1/1/1/1	-
3	MES	A	502	-	-	3/6/14/14	0/1/1/1
2	9X1	B	501	1	-	9/28/28/28	0/8/8/8
4	EDO	B	503	-	-	1/1/1/1	-

All (26) bond length outliers are listed below:

Mol	Chain	Res	Type	Atoms	Z	Observed(Å)	Ideal(Å)
2	B	501	9X1	C4-CL7	-8.57	1.55	1.74
3	B	502	MES	C8-S	-6.85	1.67	1.77
3	A	502	MES	C8-S	-5.95	1.69	1.77
2	B	501	9X1	C19-C20	-4.88	1.39	1.51
2	A	501	9X1	C34-N33	4.85	1.42	1.33
2	A	501	9X1	C48-CL5	-4.63	1.64	1.74
2	B	501	9X1	C11-N12	4.25	1.41	1.33
2	B	501	9X1	C23-C26	-4.17	1.38	1.49
2	A	501	9X1	C23-C26	-3.90	1.39	1.49
2	A	501	9X1	C32-C29	-3.81	1.42	1.51
2	B	501	9X1	C32-C29	-3.68	1.42	1.51
2	A	501	9X1	C1-N1	-3.50	1.34	1.42
2	B	501	9X1	C45-N43	-3.22	1.34	1.42
2	A	501	9X1	C19-C20	-3.14	1.43	1.51
2	B	501	9X1	C36-N43	-3.03	1.37	1.44

Continued on next page...

Continued from previous page...

Mol	Chain	Res	Type	Atoms	Z	Observed(Å)	Ideal(Å)
2	A	501	9X1	C32-N33	2.94	1.54	1.49
2	A	501	9X1	C11-N12	2.89	1.39	1.33
2	B	501	9X1	C34-N33	2.50	1.38	1.33
2	B	501	9X1	C9-N1	-2.23	1.39	1.44
2	A	501	9X1	C4-CL7	-2.22	1.69	1.74
2	A	501	9X1	C36-N43	-2.16	1.39	1.44
2	B	501	9X1	C1-N1	-2.07	1.37	1.42
2	A	501	9X1	C9-N1	-2.05	1.39	1.44
2	A	501	9X1	C28-C27	2.04	1.42	1.38
2	B	501	9X1	C48-CL5	-2.02	1.70	1.74
2	B	501	9X1	C19-N12	2.01	1.52	1.49

All (42) bond angle outliers are listed below:

Mol	Chain	Res	Type	Atoms	Z	Observed(°)	Ideal(°)
2	B	501	9X1	C37-C36-N43	5.50	124.14	118.97
2	A	501	9X1	C14-C9-N1	5.48	124.12	118.97
2	A	501	9X1	C31-C26-C23	-4.80	113.03	121.36
2	B	501	9X1	C14-C13-N12	4.48	121.96	118.76
2	B	501	9X1	C19-N12-C13	4.39	125.57	120.32
2	A	501	9X1	C45-N43-C36	4.33	125.64	119.91
3	B	502	MES	O2S-S-C8	4.31	112.11	106.92
2	A	501	9X1	C19-N12-C13	4.09	125.20	120.32
2	A	501	9X1	C27-C26-C23	3.94	128.18	121.36
2	A	501	9X1	C37-C38-N33	3.87	121.53	118.76
2	B	501	9X1	C11-N12-C13	-3.81	117.69	121.05
3	A	502	MES	O1S-S-C8	3.80	111.49	106.92
3	A	502	MES	O2S-S-C8	3.32	110.92	106.92
2	B	501	9X1	C45-N43-C36	3.21	124.16	119.91
2	A	501	9X1	C50-C45-N43	3.20	124.93	120.46
2	A	501	9X1	C34-N33-C38	-3.18	118.24	121.05
2	A	501	9X1	C14-C13-N12	3.03	120.92	118.76
3	B	502	MES	O1S-S-C8	3.01	110.54	106.92
2	B	501	9X1	C32-N33-C38	2.92	123.80	120.32
2	A	501	9X1	C32-N33-C38	2.86	123.74	120.32
3	A	502	MES	O3S-S-C8	2.85	110.38	105.77
2	B	501	9X1	C37-C38-N33	2.76	120.73	118.76
2	B	501	9X1	C24-C23-C26	-2.69	116.69	121.36
2	B	501	9X1	C1-N1-C9	2.51	123.23	119.91
2	A	501	9X1	C36-C37-C38	2.49	120.25	117.87
2	A	501	9X1	C15-C14-C13	-2.48	115.47	118.17
2	B	501	9X1	C35-C34-N33	-2.45	119.18	122.48

Continued on next page...

Continued from previous page...

Mol	Chain	Res	Type	Atoms	Z	Observed(°)	Ideal(°)
2	B	501	9X1	C32-C29-C30	2.43	125.03	120.40
2	B	501	9X1	C9-C14-C13	2.33	120.09	117.87
2	A	501	9X1	C22-C23-C26	-2.29	117.39	121.36
2	B	501	9X1	C32-N33-C34	-2.26	114.94	118.29
2	B	501	9X1	C6-C1-N1	2.26	123.61	120.46
2	A	501	9X1	C20-C19-N12	-2.25	109.03	112.71
2	A	501	9X1	C16-C15-C14	2.25	124.01	120.89
2	B	501	9X1	C42-C37-C38	-2.20	115.78	118.17
2	A	501	9X1	C19-N12-C11	-2.15	115.11	118.29
3	B	502	MES	O2S-S-O1S	-2.14	106.55	113.95
2	A	501	9X1	C1-N1-C9	2.12	122.71	119.91
2	B	501	9X1	C17-C18-C13	2.07	123.40	119.44
2	A	501	9X1	C17-C18-C13	2.06	123.39	119.44
2	B	501	9X1	C5-C6-C1	2.04	123.01	120.32
2	A	501	9X1	C47-C46-C45	2.01	122.97	120.32

There are no chirality outliers.

All (27) torsion outliers are listed below:

Mol	Chain	Res	Type	Atoms
2	A	501	9X1	C14-C9-N1-C1
3	A	502	MES	C7-C8-S-O2S
3	A	502	MES	C7-C8-S-O3S
2	B	501	9X1	C37-C36-N43-C45
2	A	501	9X1	C24-C23-C26-C27
2	A	501	9X1	C24-C23-C26-C31
2	A	501	9X1	C22-C23-C26-C27
2	A	501	9X1	C22-C23-C26-C31
2	B	501	9X1	C22-C23-C26-C31
2	B	501	9X1	C24-C23-C26-C31
2	B	501	9X1	C22-C23-C26-C27
2	B	501	9X1	C24-C23-C26-C27
2	A	501	9X1	C10-C9-N1-C8
4	B	503	EDO	O1-C1-C2-O2
3	B	502	MES	C8-C7-N4-C3
4	A	504	EDO	O1-C1-C2-O2
2	B	501	9X1	C30-C29-C32-N33
2	A	501	9X1	C30-C29-C32-N33
2	B	501	9X1	C28-C29-C32-N33
2	A	501	9X1	C28-C29-C32-N33
3	A	502	MES	C7-C8-S-O1S
2	A	501	9X1	C35-C36-N43-C44

Continued on next page...

Continued from previous page...

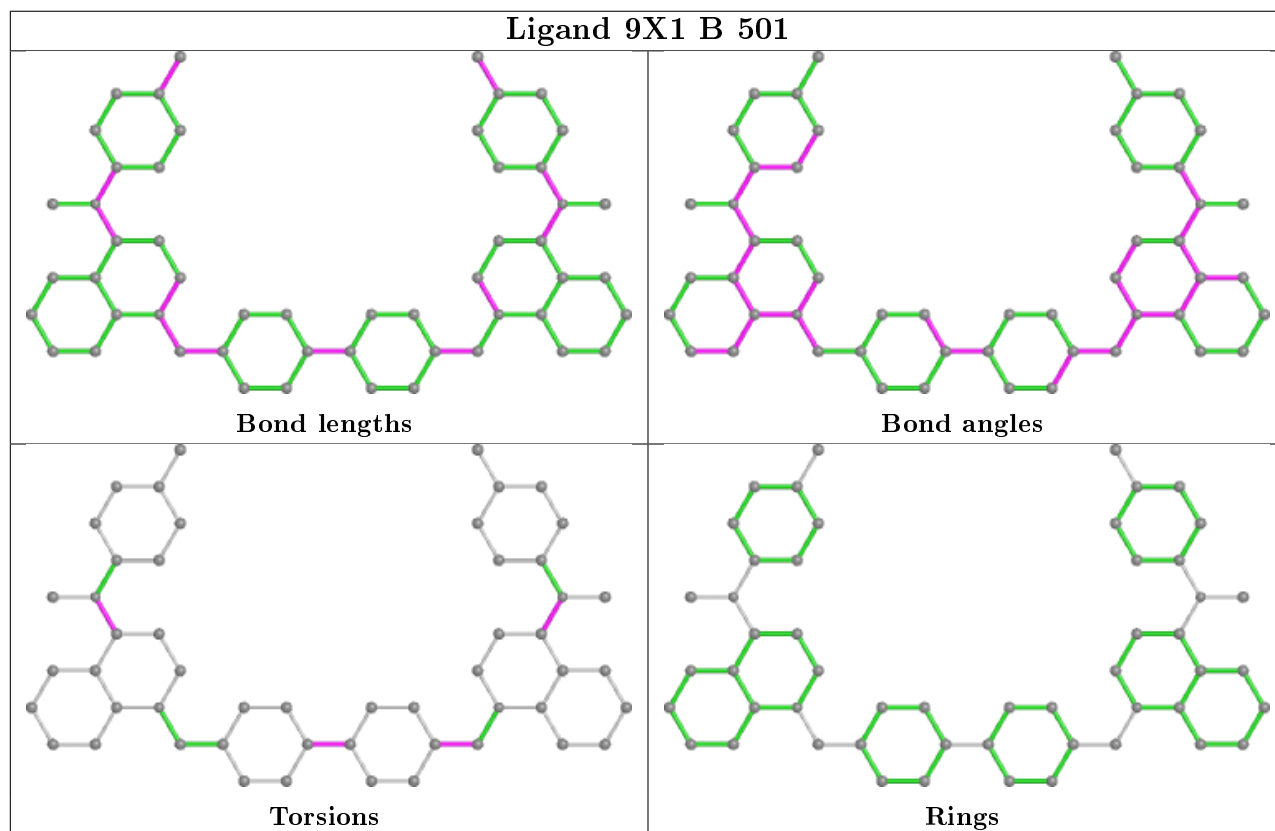
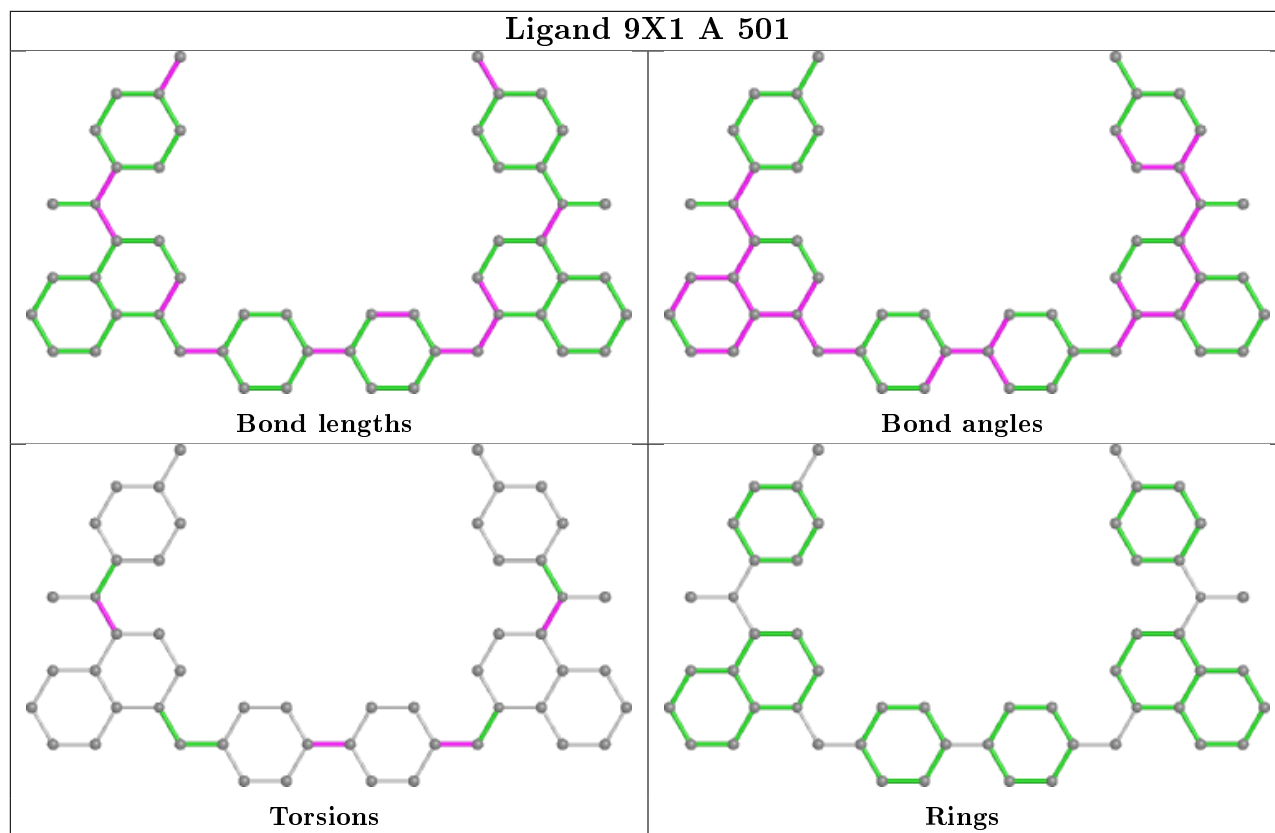
Mol	Chain	Res	Type	Atoms
2	B	501	9X1	C35-C36-N43-C44
3	B	502	MES	C8-C7-N4-C5
4	A	503	EDO	O1-C1-C2-O2
2	B	501	9X1	C10-C9-N1-C8
4	A	505	EDO	O1-C1-C2-O2

There are no ring outliers.

2 monomers are involved in 18 short contacts:

Mol	Chain	Res	Type	Clashes	Symm-Clashes
2	A	501	9X1	9	0
2	B	501	9X1	9	0

The following is a two-dimensional graphical depiction of Mogul quality analysis of bond lengths, bond angles, torsion angles, and ring geometry for all instances of the Ligand of Interest. In addition, ligands with molecular weight > 250 and outliers as shown on the validation Tables will also be included. For torsion angles, if less than 5% of the Mogul distribution of torsion angles is within 10 degrees of the torsion angle in question, then that torsion angle is considered an outlier. Any bond that is central to one or more torsion angles identified as an outlier by Mogul will be highlighted in the graph. For rings, the root-mean-square deviation (RMSD) between the ring in question and similar rings identified by Mogul is calculated over all ring torsion angles. If the average RMSD is greater than 60 degrees and the minimal RMSD between the ring in question and any Mogul-identified rings is also greater than 60 degrees, then that ring is considered an outlier. The outliers are highlighted in purple. The color gray indicates Mogul did not find sufficient equivalents in the CSD to analyse the geometry.



5.7 Other polymers [i](#)

There are no such residues in this entry.

5.8 Polymer linkage issues [i](#)

There are no chain breaks in this entry.

6 Fit of model and data

6.1 Protein, DNA and RNA chains

In the following table, the column labelled '#RSRZ > 2' contains the number (and percentage) of RSRZ outliers, followed by percent RSRZ outliers for the chain as percentile scores relative to all X-ray entries and entries of similar resolution. The OWAB column contains the minimum, median, 95th percentile and maximum values of the occupancy-weighted average B-factor per residue. The column labelled 'Q < 0.9' lists the number of (and percentage) of residues with an average occupancy less than 0.9.

Mol	Chain	Analysed	<RSRZ>	#RSRZ>2	OWAB(Å ²)	Q<0.9
1	A	352/378 (93%)	0.47	33 (9%) 8 13	29, 49, 101, 140	0
1	B	353/378 (93%)	0.32	25 (7%) 16 23	29, 49, 87, 138	0
All	All	705/756 (93%)	0.39	58 (8%) 11 17	29, 49, 95, 140	0

All (58) RSRZ outliers are listed below:

Mol	Chain	Res	Type	RSRZ
1	A	120	LEU	8.9
1	A	81	GLU	7.3
1	B	120	LEU	7.1
1	A	121	SER	6.7
1	A	119	GLY	6.4
1	A	132	THR	5.7
1	B	119	GLY	5.6
1	A	116	ILE	5.6
1	B	149	GLY	5.4
1	B	320	ASN	5.2
1	A	87	THR	5.0
1	A	136	LEU	4.7
1	A	131	ASP	4.2
1	B	121	SER	4.0
1	B	118	GLY	3.8
1	B	307	CYS	3.8
1	A	117	ARG	3.6
1	A	388	ASN	3.6
1	A	84	GLU	3.5
1	B	322	GLU	3.5
1	A	432	SER	3.4
1	B	388	ASN	3.4
1	A	89	ARG	3.2
1	B	392	ASN	3.2

Continued on next page...

Continued from previous page...

Mol	Chain	Res	Type	RSRZ
1	A	123	MET	3.1
1	B	132	THR	3.1
1	A	434	GLU	3.1
1	B	248[A]	TRP	3.0
1	A	433	ILE	2.9
1	B	389	ASP	2.9
1	B	331	PHE	2.9
1	A	135	THR	2.8
1	A	269	SER	2.8
1	A	115	VAL	2.7
1	A	86	ARG	2.7
1	B	317	GLY	2.7
1	A	118	GLY	2.5
1	A	262	ARG	2.5
1	A	82	GLN	2.5
1	B	390	PHE	2.4
1	B	329	ILE	2.4
1	A	205	LEU	2.4
1	B	341	PHE	2.3
1	A	268	GLU	2.3
1	A	137	GLY	2.3
1	B	319	GLU	2.3
1	A	148	TYR	2.3
1	A	258	LYS	2.3
1	B	262	ARG	2.2
1	B	80	ASP	2.2
1	B	420	TRP	2.1
1	B	122	ASN	2.1
1	A	122	ASN	2.1
1	B	345	ASN	2.1
1	A	147	LEU	2.1
1	B	312	ILE	2.1
1	A	85	PRO	2.1
1	A	107	ARG	2.0

6.2 Non-standard residues in protein, DNA, RNA chains [i](#)

There are no non-standard protein/DNA/RNA residues in this entry.

6.3 Carbohydrates

There are no carbohydrates in this entry.

6.4 Ligands

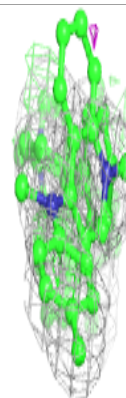
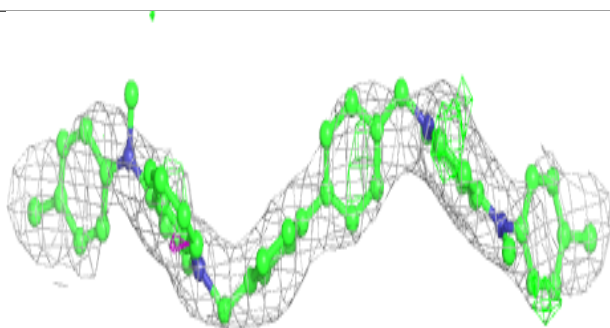
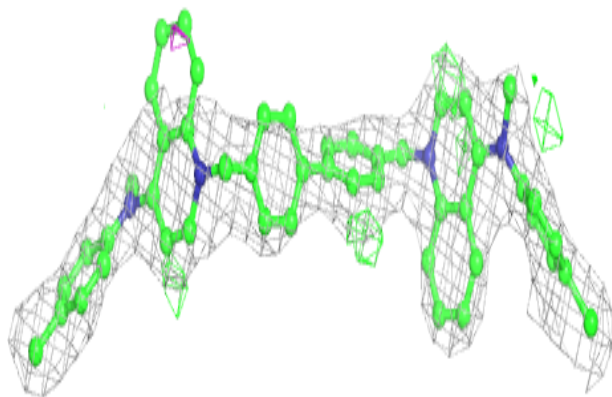
In the following table, the Atoms column lists the number of modelled atoms in the group and the number defined in the chemical component dictionary. The B-factors column lists the minimum, median, 95th percentile and maximum values of B factors of atoms in the group. The column labelled 'Q< 0.9' lists the number of atoms with occupancy less than 0.9.

Mol	Type	Chain	Res	Atoms	RSCC	RSR	B-factors(Å ²)	Q<0.9
2	9X1	B	501	52/52	0.68	0.30	39,54,64,67	52
2	9X1	A	501	52/52	0.81	0.26	44,53,60,61	52
3	MES	B	502	12/12	0.83	0.23	88,96,109,113	0
3	MES	A	502	12/12	0.88	0.22	95,107,110,110	0
4	EDO	A	503	4/4	0.91	0.14	43,49,54,59	0
4	EDO	B	503	4/4	0.91	0.25	66,73,74,75	0
4	EDO	A	505	4/4	0.94	0.23	44,47,49,54	0
4	EDO	A	504	4/4	0.94	0.27	54,59,59,60	0

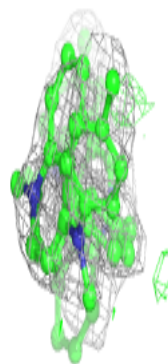
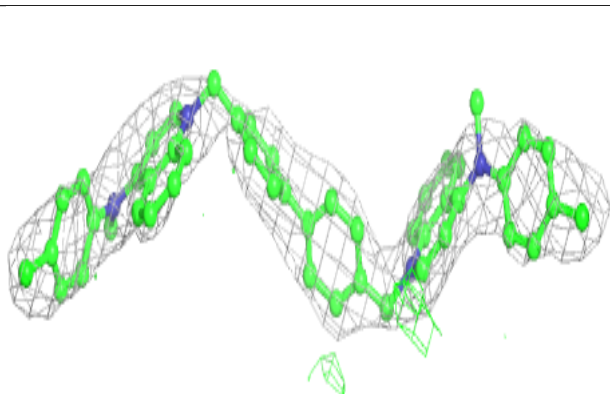
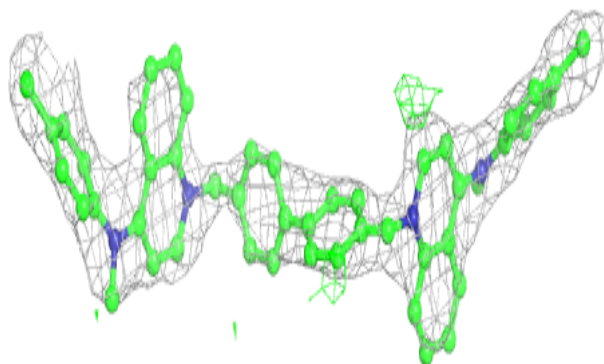
The following is a graphical depiction of the model fit to experimental electron density of all instances of the Ligand of Interest. In addition, ligands with molecular weight > 250 and outliers as shown on the geometry validation Tables will also be included. Each fit is shown from different orientation to approximate a three-dimensional view.

Electron density around 9X1 B 501:

$2mF_o-DF_c$ (at 0.7 rmsd) in gray
 mF_o-DF_c (at 3 rmsd) in purple (negative)
and green (positive)

**Electron density around 9X1 A 501:**

$2mF_o-DF_c$ (at 0.7 rmsd) in gray
 mF_o-DF_c (at 3 rmsd) in purple (negative)
and green (positive)



6.5 Other polymers

There are no such residues in this entry.