



# Full wwPDB X-ray Structure Validation Report ⓘ

Oct 8, 2023 – 06:08 PM EDT

PDB ID : 6W4G  
Title : Hepatitis C virus polymerase NS5B with RO inhibitor for SAR studies  
Authors : Harris, S.F.  
Deposited on : 2020-03-10  
Resolution : 1.95 Å(reported)

This is a Full wwPDB X-ray Structure Validation Report for a publicly released PDB entry.

We welcome your comments at [validation@mail.wwpdb.org](mailto:validation@mail.wwpdb.org)

A user guide is available at

<https://www.wwpdb.org/validation/2017/XrayValidationReportHelp>

with specific help available everywhere you see the ⓘ symbol.

The types of validation reports are described at

<http://www.wwpdb.org/validation/2017/FAQs#types>.

---

The following versions of software and data (see [references ⓘ](#)) were used in the production of this report:

MolProbity : 4.02b-467  
Mogul : 1.8.5 (274361), CSD as541be (2020)  
Xtriage (Phenix) : 1.13  
EDS : 2.35.1  
buster-report : 1.1.7 (2018)  
Percentile statistics : 20191225.v01 (using entries in the PDB archive December 25th 2019)  
Refmac : 5.8.0158  
CCP4 : 7.0.044 (Gargrove)  
Ideal geometry (proteins) : Engh & Huber (2001)  
Ideal geometry (DNA, RNA) : Parkinson et al. (1996)  
Validation Pipeline (wwPDB-VP) : 2.35.1

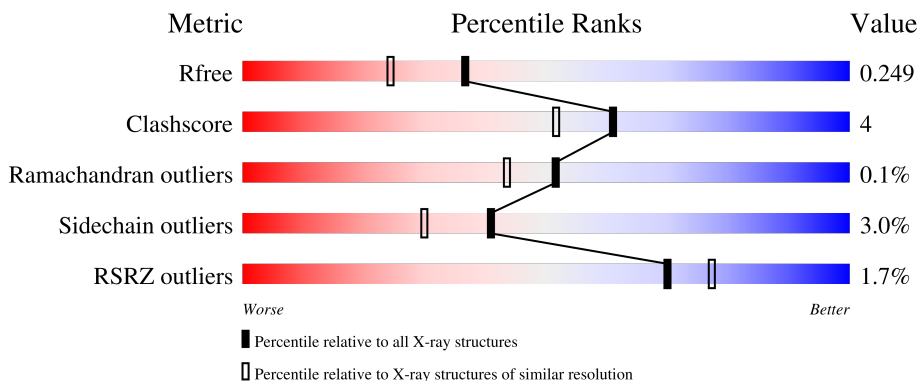
# 1 Overall quality at a glance

The following experimental techniques were used to determine the structure:

*X-RAY DIFFRACTION*

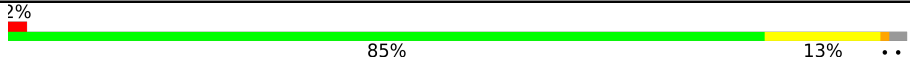
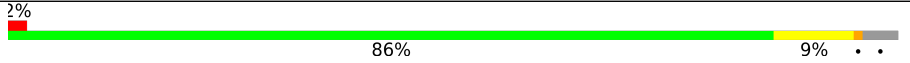
The reported resolution of this entry is 1.95 Å.

Percentile scores (ranging between 0-100) for global validation metrics of the entry are shown in the following graphic. The table shows the number of entries on which the scores are based.



Metric	Whole archive (#Entries)	Similar resolution (#Entries, resolution range(Å))
$R_{free}$	130704	2580 (1.96-1.96)
Clashscore	141614	2705 (1.96-1.96)
Ramachandran outliers	138981	2678 (1.96-1.96)
Sidechain outliers	138945	2678 (1.96-1.96)
RSRZ outliers	127900	2539 (1.96-1.96)

The table below summarises the geometric issues observed across the polymeric chains and their fit to the electron density. The red, orange, yellow and green segments of the lower bar indicate the fraction of residues that contain outliers for  $\geq 3$ , 2, 1 and 0 types of geometric quality criteria respectively. A grey segment represents the fraction of residues that are not modelled. The numeric value for each fraction is indicated below the corresponding segment, with a dot representing fractions  $\leq 5\%$ . The upper red bar (where present) indicates the fraction of residues that have poor fit to the electron density. The numeric value is given above the bar.

Mol	Chain	Length	Quality of chain
1	A	568	 2% 85% 13% ..
1	B	568	 2% 86% 9% ..

## 2 Entry composition i

There are 3 unique types of molecules in this entry. The entry contains 9189 atoms, of which 0 are hydrogens and 0 are deuteriums.

In the tables below, the ZeroOcc column contains the number of atoms modelled with zero occupancy, the AltConf column contains the number of residues with at least one atom in alternate conformation and the Trace column contains the number of residues modelled with at most 2 atoms.

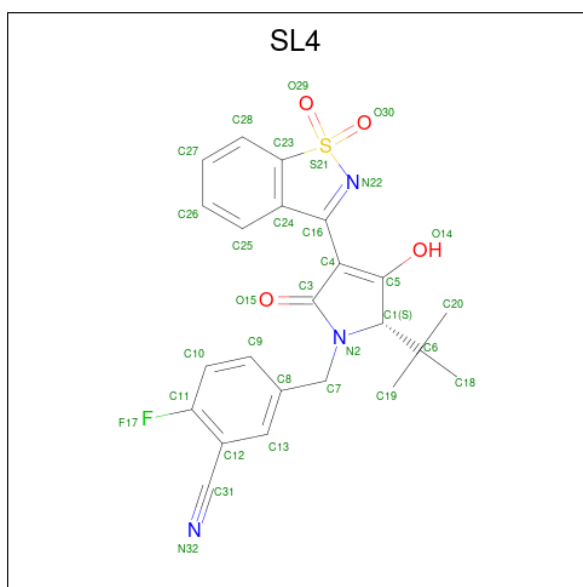
- Molecule 1 is a protein called NS5B.

Mol	Chain	Residues	Atoms					ZeroOcc	AltConf	Trace
			Total	C	N	O	S			
1	A	557	Total	C	N	O	S	0	7	0
			4387	2766	775	811	35			
1	B	547	Total	C	N	O	S	0	9	0
			4334	2734	764	800	36			

There are 14 discrepancies between the modelled and reference sequences:

Chain	Residue	Modelled	Actual	Comment	Reference
A	-5	MET	-	expression tag	UNP P26663
A	-4	HIS	-	expression tag	UNP P26663
A	-3	HIS	-	expression tag	UNP P26663
A	-2	HIS	-	expression tag	UNP P26663
A	-1	HIS	-	expression tag	UNP P26663
A	0	HIS	-	expression tag	UNP P26663
A	1	HIS	-	expression tag	UNP P26663
B	-5	MET	-	expression tag	UNP P26663
B	-4	HIS	-	expression tag	UNP P26663
B	-3	HIS	-	expression tag	UNP P26663
B	-2	HIS	-	expression tag	UNP P26663
B	-1	HIS	-	expression tag	UNP P26663
B	0	HIS	-	expression tag	UNP P26663
B	1	HIS	-	expression tag	UNP P26663

- Molecule 2 is 5-[[[(2 {S})-4-[1,1-bis(oxidanylidene)-1,2-benzothiazol-3-yl]-2- {tert}-butyl-3-oxidanyl-5-oxidanylidene-2 {H}-pyrrol-1-yl]methyl]-2-fluoranyl-benzenecarbonitrile (three-letter code: SL4) (formula: C<sub>23</sub>H<sub>20</sub>FN<sub>3</sub>O<sub>4</sub>S) (labeled as "Ligand of Interest" by depositor).



Mol	Chain	Residues	Atoms					ZeroOcc	AltConf	
			Total	C	F	N	O			S
2	A	1	32	23	1	3	4	1	0	0
2	B	1	32	23	1	3	4	1	0	0

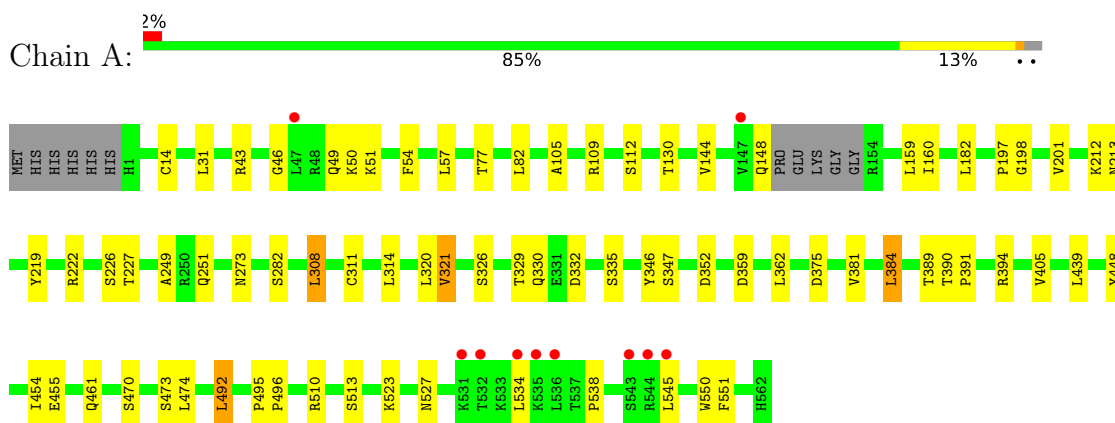
- Molecule 3 is water.

Mol	Chain	Residues	Atoms		ZeroOcc	AltConf
			Total	O		
3	A	186	186	186	0	0
3	B	218	218	218	0	0

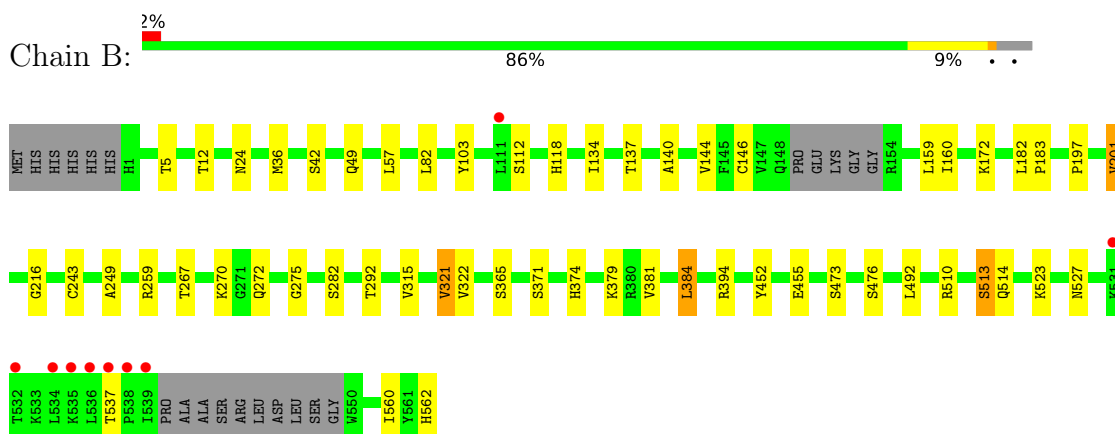
### 3 Residue-property plots

These plots are drawn for all protein, RNA, DNA and oligosaccharide chains in the entry. The first graphic for a chain summarises the proportions of the various outlier classes displayed in the second graphic. The second graphic shows the sequence view annotated by issues in geometry and electron density. Residues are color-coded according to the number of geometric quality criteria for which they contain at least one outlier: green = 0, yellow = 1, orange = 2 and red = 3 or more. A red dot above a residue indicates a poor fit to the electron density ( $RSRZ > 2$ ). Stretches of 2 or more consecutive residues without any outlier are shown as a green connector. Residues present in the sample, but not in the model, are shown in grey.

- Molecule 1: NS5B



- Molecule 1: NS5B



## 4 Data and refinement statistics

Property	Value	Source
Space group	P 21 21 21	Depositor
Cell constants a, b, c, $\alpha$ , $\beta$ , $\gamma$	85.48Å 104.70Å 126.12Å 90.00° 90.00° 90.00°	Depositor
Resolution (Å)	45.64 – 1.95 45.66 – 1.95	Depositor EDS
% Data completeness (in resolution range)	74.1 (45.64-1.95) 74.1 (45.66-1.95)	Depositor EDS
$R_{merge}$	0.07	Depositor
$R_{sym}$	(Not available)	Depositor
$\langle I/\sigma(I) \rangle$ <sup>1</sup>	1.80 (at 1.95Å)	Xtrriage
Refinement program	REFMAC 5.8.0258	Depositor
R, $R_{free}$	0.184 , 0.247 0.190 , 0.249	Depositor DCC
$R_{free}$ test set	3066 reflections (4.99%)	wwPDB-VP
Wilson B-factor (Å <sup>2</sup> )	38.8	Xtrriage
Anisotropy	0.168	Xtrriage
Bulk solvent $k_{sol}$ (e/Å <sup>3</sup> ), $B_{sol}$ (Å <sup>2</sup> )	0.33 , 38.1	EDS
L-test for twinning <sup>2</sup>	$\langle  L  \rangle = 0.48$ , $\langle L^2 \rangle = 0.31$	Xtrriage
Estimated twinning fraction	No twinning to report.	Xtrriage
$F_o, F_c$ correlation	0.97	EDS
Total number of atoms	9189	wwPDB-VP
Average B, all atoms (Å <sup>2</sup> )	47.0	wwPDB-VP

Xtrriage's analysis on translational NCS is as follows: *The analyses of the Patterson function reveals a significant off-origin peak that is 42.72 % of the origin peak, indicating pseudo-translational symmetry. The chance of finding a peak of this or larger height randomly in a structure without pseudo-translational symmetry is equal to 1.9569e-04. The detected translational NCS is most likely also responsible for the elevated intensity ratio.*

<sup>1</sup>Intensities estimated from amplitudes.

<sup>2</sup>Theoretical values of  $\langle |L| \rangle$ ,  $\langle L^2 \rangle$  for acentric reflections are 0.5, 0.333 respectively for untwinned datasets, and 0.375, 0.2 for perfectly twinned datasets.

## 5 Model quality

### 5.1 Standard geometry

Bond lengths and bond angles in the following residue types are not validated in this section: SL4

The Z score for a bond length (or angle) is the number of standard deviations the observed value is removed from the expected value. A bond length (or angle) with  $|Z| > 5$  is considered an outlier worth inspection. RMSZ is the root-mean-square of all Z scores of the bond lengths (or angles).

Mol	Chain	Bond lengths		Bond angles	
		RMSZ	# Z  >5	RMSZ	# Z  >5
1	A	0.75	0/4482	0.88	0/6080
1	B	0.75	0/4427	0.87	0/6003
All	All	0.75	0/8909	0.87	0/12083

There are no bond length outliers.

There are no bond angle outliers.

There are no chirality outliers.

There are no planarity outliers.

### 5.2 Too-close contacts

In the following table, the Non-H and H(model) columns list the number of non-hydrogen atoms and hydrogen atoms in the chain respectively. The H(added) column lists the number of hydrogen atoms added and optimized by MolProbity. The Clashes column lists the number of clashes within the asymmetric unit, whereas Symm-Clashes lists symmetry-related clashes.

Mol	Chain	Non-H	H(model)	H(added)	Clashes	Symm-Clashes
1	A	4387	0	4399	45	0
1	B	4334	0	4343	33	0
2	A	32	0	0	2	0
2	B	32	0	0	2	0
3	A	186	0	0	9	0
3	B	218	0	0	5	0
All	All	9189	0	8742	77	0

The all-atom clashscore is defined as the number of clashes found per 1000 atoms (including hydrogen atoms). The all-atom clashscore for this structure is 4.

All (77) close contacts within the same asymmetric unit are listed below, sorted by their clash

magnitude.

Atom-1	Atom-2	Interatomic distance (Å)	Clash overlap (Å)
1:A:82:LEU:HD13	1:A:249:ALA:HB2	1.69	0.74
1:B:379:LYS:C	3:B:702:HOH:O	2.29	0.70
1:B:103:TYR:OH	1:B:118:HIS:HD2	1.75	0.69
1:B:374:HIS:HA	3:B:702:HOH:O	1.97	0.64
1:A:359:ASP:HB3	1:A:362:LEU:HD12	1.81	0.62
1:B:82:LEU:HD13	1:B:249:ALA:HB2	1.81	0.62
1:B:510:ARG:O	1:B:514:GLN:HG3	1.98	0.62
1:A:510:ARG:O	1:A:513:SER:HB2	2.02	0.59
1:B:197:PRO:HB3	2:B:601:SL4:N32	2.19	0.57
1:A:130:THR:CG2	1:A:251:GLN:HE22	2.18	0.57
1:A:314:LEU:HB3	1:A:321:VAL:HG23	1.86	0.57
1:A:308:LEU:HD11	1:A:335:SER:HB3	1.86	0.57
1:A:527:ASN:HD21	1:A:534:LEU:HB2	1.70	0.56
1:A:219:TYR:HB3	1:A:320:LEU:HD23	1.87	0.56
1:B:172:LYS:HE3	1:B:560:ILE:HD13	1.86	0.56
1:A:375:ASP:HB2	3:A:864:HOH:O	2.07	0.55
1:B:197:PRO:O	1:B:201:VAL:HG23	2.07	0.55
1:A:160:ILE:HA	1:A:282:SER:OG	2.07	0.55
1:A:461:GLN:HB3	1:A:545:LEU:HD12	1.89	0.55
1:B:12:THR:HG21	1:B:270:LYS:HD2	1.89	0.54
1:A:455:GLU:HB3	3:A:804:HOH:O	2.07	0.54
1:A:346:TYR:O	1:A:347:SER:HB3	2.07	0.53
1:A:227:THR:HB	1:A:347:SER:O	2.08	0.53
1:B:523:LYS:O	1:B:527:ASN:HB2	2.09	0.53
2:B:601:SL4:C25	2:B:601:SL4:O15	2.57	0.53
1:B:182:LEU:HD12	1:B:243:CYS:SG	2.49	0.53
1:A:105:ALA:O	1:A:109:ARG:HG3	2.11	0.50
1:A:46:GLY:HA2	1:A:49:GLN:HE21	1.78	0.49
1:B:5:THR:O	1:B:275:GLY:HA3	2.13	0.49
1:B:182:LEU:N	1:B:183:PRO:CD	2.76	0.49
1:A:43:ARG:NH1	3:A:719:HOH:O	2.46	0.48
1:A:130:THR:HG21	1:A:251:GLN:HE22	1.78	0.48
1:A:527:ASN:ND2	1:A:534:LEU:HB2	2.28	0.48
1:B:321:VAL:HG22	1:B:365:SER:HB2	1.96	0.47
1:A:144:VAL:HB	1:A:394:ARG:HG2	1.96	0.47
1:A:523:LYS:HG2	1:A:534:LEU:HD22	1.97	0.47
1:A:389:THR:HB	3:A:733:HOH:O	2.14	0.47
1:A:182:LEU:HD23	1:A:182:LEU:C	2.34	0.47
1:A:273:ASN:ND2	3:A:720:HOH:O	2.48	0.46
1:A:384:LEU:HB2	2:A:601:SL4:N32	2.31	0.46
1:B:42:SER:HA	1:B:140:ALA:CB	2.46	0.46

*Continued on next page...*



Continued from previous page...

Atom-1	Atom-2	Interatomic distance (Å)	Clash overlap (Å)
1:A:308:LEU:CD1	1:A:335:SER:HB3	2.45	0.46
1:A:538:PRO:HG2	1:B:272:GLN:HG3	1.98	0.46
1:A:332:ASP:HA	3:A:774:HOH:O	2.14	0.46
1:A:51:LYS:O	1:A:222:ARG:NH2	2.49	0.46
1:A:197:PRO:HB3	2:A:601:SL4:N32	2.30	0.46
1:A:308:LEU:HB3	1:A:311:CYS:SG	2.56	0.45
1:A:454:ILE:HD11	1:A:550:TRP:CZ2	2.51	0.45
1:A:198:GLY:O	1:A:201:VAL:HG12	2.15	0.45
1:A:448:TYR:CE2	1:A:551:PHE:HD1	2.34	0.45
1:A:527:ASN:HD21	1:A:534:LEU:H	1.64	0.45
1:B:144:VAL:HB	1:B:394:ARG:HG2	2.00	0.44
1:B:379:LYS:O	3:B:702:HOH:O	2.21	0.44
1:A:326:SER:OG	1:A:332:ASP:OD2	2.17	0.44
1:B:292:THR:HG23	1:B:315:VAL:HG12	2.00	0.44
1:A:470:SER:O	1:A:474:LEU:HG	2.19	0.43
1:B:36[B]:MET:O	1:B:146:CYS:HA	2.19	0.43
1:B:455:GLU:HB3	3:B:769:HOH:O	2.19	0.43
1:B:36[B]:MET:HE2	1:B:492:LEU:HD12	2.01	0.42
1:A:54:PHE:CZ	1:A:226:SER:HB3	2.55	0.42
1:B:134:ILE:HG13	1:B:259:ARG:HB3	2.01	0.42
1:B:49:GLN:NE2	3:B:730:HOH:O	2.52	0.42
1:B:82:LEU:HD12	1:B:82:LEU:HA	1.94	0.42
1:B:182:LEU:C	1:B:182:LEU:HD23	2.40	0.42
1:A:495:PRO:HA	1:A:496:PRO:HD3	1.92	0.41
1:B:374:HIS:CD2	1:B:476:SER:HB2	2.55	0.41
1:A:50:LYS:NZ	3:A:723:HOH:O	2.49	0.41
1:A:212:LYS:CE	3:A:722:HOH:O	2.67	0.41
1:B:137:THR:HA	1:B:267:THR:O	2.21	0.41
1:B:384:LEU:HD12	1:B:384:LEU:HA	1.90	0.41
1:A:527:ASN:ND2	3:A:712:HOH:O	2.41	0.41
1:A:77:THR:O	1:B:24:ASN:HB2	2.21	0.41
1:B:452:TYR:CE2	1:B:562:HIS:HB2	2.56	0.41
1:B:216:GLY:HA2	1:B:322:VAL:O	2.21	0.41
1:A:31:LEU:HD11	1:A:492:LEU:HG	2.02	0.40
1:A:390:THR:HB	1:A:391:PRO:HD3	2.02	0.40
1:B:160:ILE:HA	1:B:282:SER:OG	2.21	0.40

There are no symmetry-related clashes.

## 5.3 Torsion angles [i](#)

### 5.3.1 Protein backbone [i](#)

In the following table, the Percentiles column shows the percent Ramachandran outliers of the chain as a percentile score with respect to all X-ray entries followed by that with respect to entries of similar resolution.

The Analysed column shows the number of residues for which the backbone conformation was analysed, and the total number of residues.

Mol	Chain	Analysed	Favoured	Allowed	Outliers	Percentiles	
1	A	560/568 (99%)	545 (97%)	15 (3%)	0	100	100
1	B	550/568 (97%)	537 (98%)	12 (2%)	1 (0%)	47	38
All	All	1110/1136 (98%)	1082 (98%)	27 (2%)	1 (0%)	51	43

All (1) Ramachandran outliers are listed below:

Mol	Chain	Res	Type
1	B	513	SER

### 5.3.2 Protein sidechains [i](#)

In the following table, the Percentiles column shows the percent sidechain outliers of the chain as a percentile score with respect to all X-ray entries followed by that with respect to entries of similar resolution.

The Analysed column shows the number of residues for which the sidechain conformation was analysed, and the total number of residues.

Mol	Chain	Analysed	Rotameric	Outliers	Percentiles	
1	A	482/484 (100%)	465 (96%)	17 (4%)	36	24
1	B	477/484 (99%)	466 (98%)	11 (2%)	50	42
All	All	959/968 (99%)	931 (97%)	28 (3%)	41	31

All (28) residues with a non-rotameric sidechain are listed below:

Mol	Chain	Res	Type
1	A	14	CYS
1	A	57	LEU
1	A	112	SER
1	A	148	GLN
1	A	159	LEU

*Continued on next page...*

*Continued from previous page...*

<b>Mol</b>	<b>Chain</b>	<b>Res</b>	<b>Type</b>
1	A	213	ASN
1	A	308	LEU
1	A	321	VAL
1	A	329	THR
1	A	330	GLN
1	A	352	ASP
1	A	381	VAL
1	A	384	LEU
1	A	405	VAL
1	A	439	LEU
1	A	473	SER
1	A	492	LEU
1	B	57	LEU
1	B	112	SER
1	B	159	LEU
1	B	201	VAL
1	B	321	VAL
1	B	371	SER
1	B	381	VAL
1	B	384	LEU
1	B	473	SER
1	B	513	SER
1	B	537	THR

Sometimes sidechains can be flipped to improve hydrogen bonding and reduce clashes. All (14) such sidechains are listed below:

<b>Mol</b>	<b>Chain</b>	<b>Res</b>	<b>Type</b>
1	A	49	GLN
1	A	95	HIS
1	A	118	HIS
1	A	148	GLN
1	A	251	GLN
1	A	446	GLN
1	A	527	ASN
1	B	49	GLN
1	B	95	HIS
1	B	118	HIS
1	B	374	HIS
1	B	446	GLN
1	B	527	ASN
1	B	562	HIS

### 5.3.3 RNA [i](#)

There are no RNA molecules in this entry.

## 5.4 Non-standard residues in protein, DNA, RNA chains [i](#)

There are no non-standard protein/DNA/RNA residues in this entry.

## 5.5 Carbohydrates [i](#)

There are no monosaccharides in this entry.

## 5.6 Ligand geometry [i](#)

2 ligands are modelled in this entry.

In the following table, the Counts columns list the number of bonds (or angles) for which Mogul statistics could be retrieved, the number of bonds (or angles) that are observed in the model and the number of bonds (or angles) that are defined in the Chemical Component Dictionary. The Link column lists molecule types, if any, to which the group is linked. The Z score for a bond length (or angle) is the number of standard deviations the observed value is removed from the expected value. A bond length (or angle) with  $|Z| > 2$  is considered an outlier worth inspection. RMSZ is the root-mean-square of all Z scores of the bond lengths (or angles).

Mol	Type	Chain	Res	Link	Bond lengths			Bond angles		
					Counts	RMSZ	# Z  > 2	Counts	RMSZ	# Z  > 2
2	SL4	A	601	-	34,35,35	1.39	5 (14%)	44,55,55	2.46	14 (31%)
2	SL4	B	601	-	34,35,35	1.71	7 (20%)	44,55,55	2.89	16 (36%)

In the following table, the Chirals column lists the number of chiral outliers, the number of chiral centers analysed, the number of these observed in the model and the number defined in the Chemical Component Dictionary. Similar counts are reported in the Torsion and Rings columns. '-' means no outliers of that kind were identified.

Mol	Type	Chain	Res	Link	Chirals	Torsions	Rings
2	SL4	A	601	-	-	2/13/51/51	0/4/4/4
2	SL4	B	601	-	-	1/13/51/51	0/4/4/4

All (12) bond length outliers are listed below:

Mol	Chain	Res	Type	Atoms	Z	Observed(Å)	Ideal(Å)
2	B	601	SL4	C1-N2	5.05	1.51	1.46

*Continued on next page...*

Continued from previous page...

Mol	Chain	Res	Type	Atoms	Z	Observed(Å)	Ideal(Å)
2	A	601	SL4	C24-C23	3.50	1.42	1.38
2	B	601	SL4	C24-C23	3.48	1.42	1.38
2	A	601	SL4	C1-N2	3.45	1.49	1.46
2	B	601	SL4	C23-S21	3.27	1.80	1.77
2	A	601	SL4	O30-S21	-2.98	1.40	1.44
2	B	601	SL4	O30-S21	-2.97	1.40	1.44
2	B	601	SL4	C24-C16	2.65	1.51	1.45
2	B	601	SL4	C25-C24	2.64	1.44	1.39
2	A	601	SL4	C25-C24	2.19	1.43	1.39
2	A	601	SL4	C24-C16	2.11	1.50	1.45
2	B	601	SL4	O29-S21	-2.10	1.41	1.44

All (30) bond angle outliers are listed below:

Mol	Chain	Res	Type	Atoms	Z	Observed(°)	Ideal(°)
2	B	601	SL4	C1-N2-C3	-9.84	106.44	113.73
2	B	601	SL4	C8-C7-N2	-8.03	98.83	113.54
2	B	601	SL4	O30-S21-C23	-7.84	102.96	111.00
2	A	601	SL4	C8-C7-N2	-7.81	99.25	113.54
2	A	601	SL4	C1-N2-C3	-7.48	108.19	113.73
2	B	601	SL4	C28-C23-S21	5.03	134.98	130.32
2	A	601	SL4	C24-C23-S21	-4.98	103.42	106.91
2	B	601	SL4	C24-C23-S21	-4.20	103.97	106.91
2	A	601	SL4	C28-C23-S21	3.91	133.95	130.32
2	B	601	SL4	C25-C24-C23	-3.70	116.07	119.91
2	A	601	SL4	C23-S21-N22	3.27	99.04	96.59
2	A	601	SL4	C4-C16-N22	-3.20	114.42	121.24
2	A	601	SL4	C25-C24-C23	-3.19	116.60	119.91
2	B	601	SL4	O30-S21-O29	3.09	120.63	116.30
2	B	601	SL4	O15-C3-C4	-2.99	123.18	130.61
2	A	601	SL4	O30-S21-C23	-2.75	108.18	111.00
2	A	601	SL4	C13-C12-C11	2.74	119.94	117.31
2	B	601	SL4	O14-C5-C1	2.70	125.73	119.80
2	A	601	SL4	F17-C11-C10	2.62	124.42	118.59
2	B	601	SL4	O29-S21-C23	2.44	113.50	111.00
2	B	601	SL4	C6-C1-C5	-2.41	106.48	112.02
2	A	601	SL4	C6-C1-C5	-2.34	106.65	112.02
2	A	601	SL4	F17-C11-C12	-2.24	114.70	117.67
2	A	601	SL4	O15-C3-N2	-2.21	122.47	125.59
2	A	601	SL4	C7-N2-C3	-2.16	120.78	123.76
2	B	601	SL4	C7-N2-C3	-2.13	120.82	123.76
2	B	601	SL4	C23-S21-N22	2.06	98.13	96.59

Continued on next page...

*Continued from previous page...*

Mol	Chain	Res	Type	Atoms	Z	Observed(°)	Ideal(°)
2	B	601	SL4	C9-C10-C11	-2.04	116.58	119.05
2	B	601	SL4	C28-C23-C24	-2.03	121.02	122.73
2	B	601	SL4	C4-C16-N22	-2.01	116.96	121.24

There are no chirality outliers.

All (3) torsion outliers are listed below:

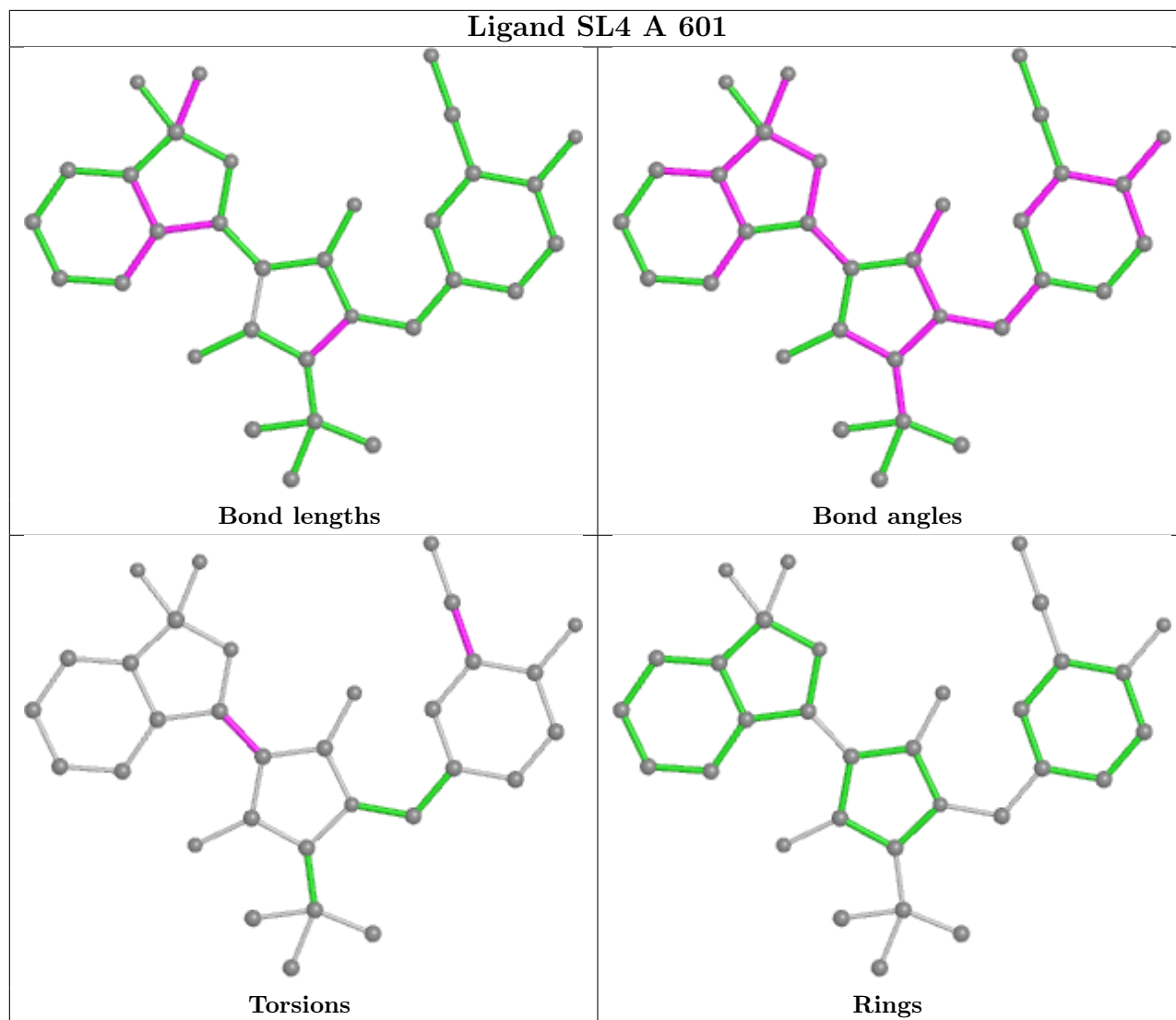
Mol	Chain	Res	Type	Atoms
2	A	601	SL4	C11-C12-C31-N32
2	A	601	SL4	C24-C16-C4-C5
2	B	601	SL4	C24-C16-C4-C5

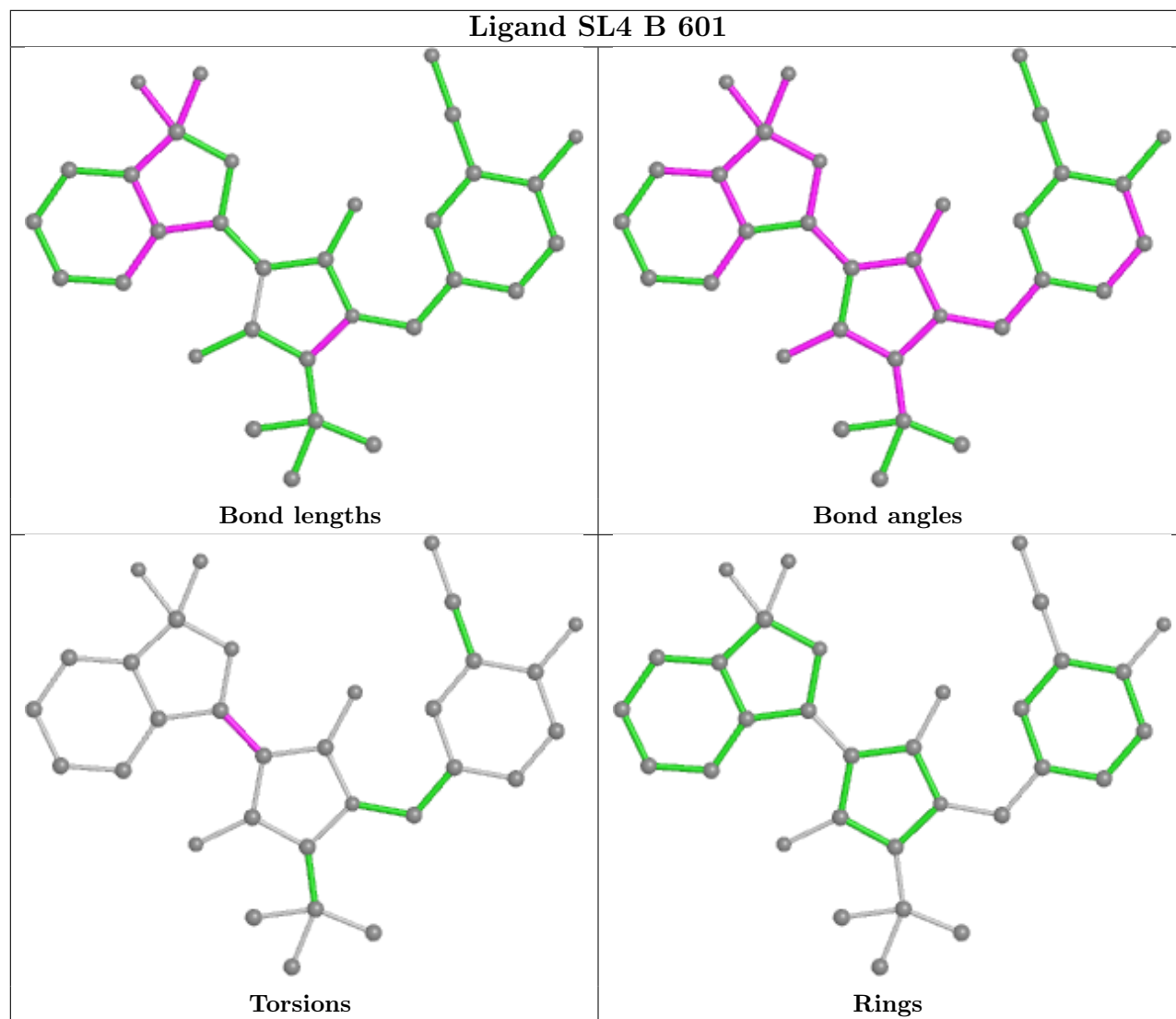
There are no ring outliers.

2 monomers are involved in 4 short contacts:

Mol	Chain	Res	Type	Clashes	Symm-Clashes
2	A	601	SL4	2	0
2	B	601	SL4	2	0

The following is a two-dimensional graphical depiction of Mogul quality analysis of bond lengths, bond angles, torsion angles, and ring geometry for all instances of the Ligand of Interest. In addition, ligands with molecular weight > 250 and outliers as shown on the validation Tables will also be included. For torsion angles, if less than 5% of the Mogul distribution of torsion angles is within 10 degrees of the torsion angle in question, then that torsion angle is considered an outlier. Any bond that is central to one or more torsion angles identified as an outlier by Mogul will be highlighted in the graph. For rings, the root-mean-square deviation (RMSD) between the ring in question and similar rings identified by Mogul is calculated over all ring torsion angles. If the average RMSD is greater than 60 degrees and the minimal RMSD between the ring in question and any Mogul-identified rings is also greater than 60 degrees, then that ring is considered an outlier. The outliers are highlighted in purple. The color gray indicates Mogul did not find sufficient equivalents in the CSD to analyse the geometry.





## 5.7 Other polymers [i](#)

There are no such residues in this entry.

## 5.8 Polymer linkage issues [i](#)

There are no chain breaks in this entry.



## 6 Fit of model and data [i](#)

### 6.1 Protein, DNA and RNA chains [i](#)

In the following table, the column labelled ‘#RSRZ > 2’ contains the number (and percentage) of RSRZ outliers, followed by percent RSRZ outliers for the chain as percentile scores relative to all X-ray entries and entries of similar resolution. The OWAB column contains the minimum, median, 95<sup>th</sup> percentile and maximum values of the occupancy-weighted average B-factor per residue. The column labelled ‘Q < 0.9’ lists the number of (and percentage) of residues with an average occupancy less than 0.9.

Mol	Chain	Analysed	<RSRZ>	#RSRZ>2	OWAB(Å <sup>2</sup> )	Q<0.9
1	A	557/568 (98%)	0.08	10 (1%) 68 76	28, 47, 77, 117	0
1	B	547/568 (96%)	-0.02	9 (1%) 72 79	29, 41, 68, 125	0
All	All	1104/1136 (97%)	0.03	19 (1%) 70 77	28, 44, 73, 125	0

All (19) RSRZ outliers are listed below:

Mol	Chain	Res	Type	RSRZ
1	B	532	THR	8.1
1	A	532	THR	7.7
1	B	535	LYS	5.0
1	B	531	LYS	4.8
1	B	538	PRO	4.0
1	A	535	LYS	3.8
1	A	543	SER	3.6
1	A	545	LEU	3.6
1	B	539	ILE	3.3
1	A	534	LEU	3.2
1	A	544	ARG	3.2
1	A	47	LEU	3.1
1	A	536	LEU	3.1
1	A	531	LYS	2.7
1	B	536	LEU	2.4
1	B	111	LEU	2.3
1	A	147	VAL	2.3
1	B	537	THR	2.1
1	B	534	LEU	2.0

### 6.2 Non-standard residues in protein, DNA, RNA chains [i](#)

There are no non-standard protein/DNA/RNA residues in this entry.

### 6.3 Carbohydrates [i](#)

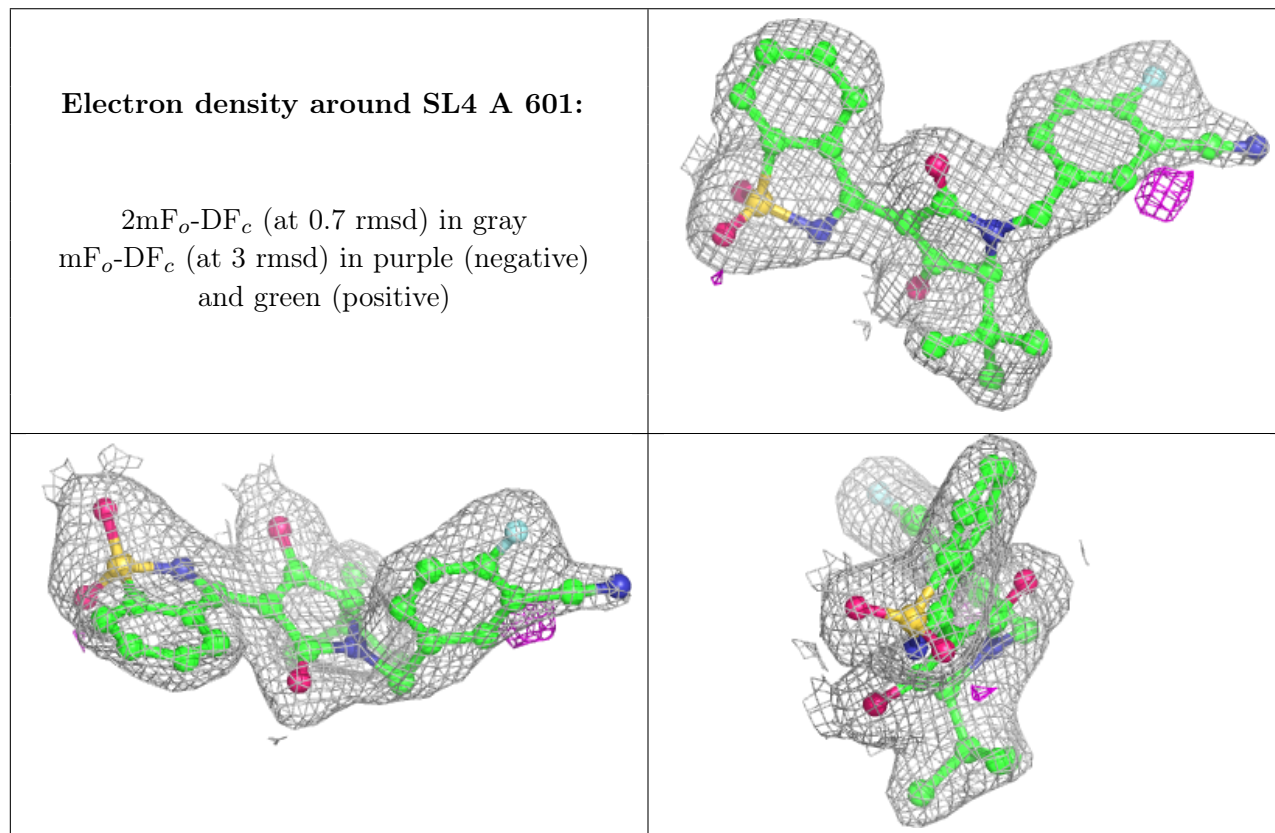
There are no monosaccharides in this entry.

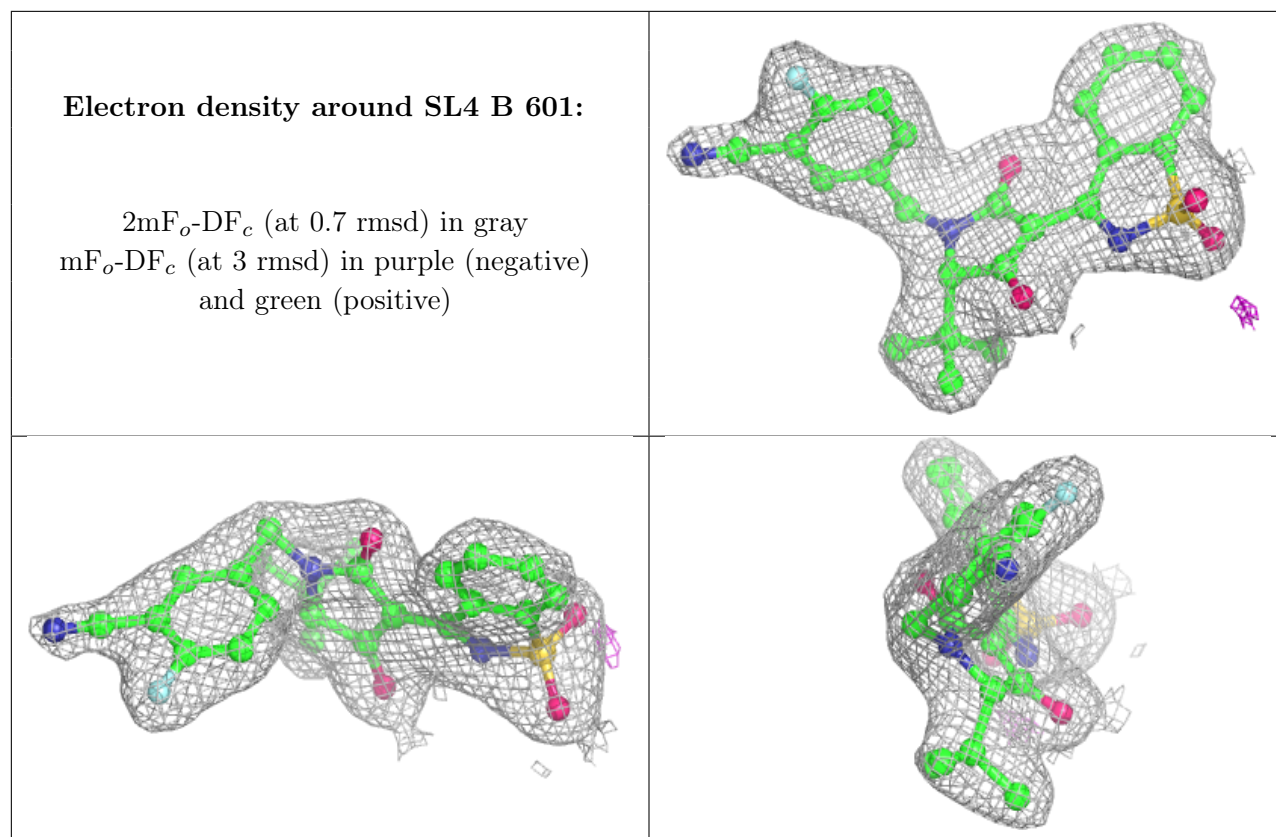
### 6.4 Ligands [i](#)

In the following table, the Atoms column lists the number of modelled atoms in the group and the number defined in the chemical component dictionary. The B-factors column lists the minimum, median, 95<sup>th</sup> percentile and maximum values of B factors of atoms in the group. The column labelled 'Q< 0.9' lists the number of atoms with occupancy less than 0.9.

Mol	Type	Chain	Res	Atoms	RSCC	RSR	B-factors(Å <sup>2</sup> )	Q<0.9
2	SL4	A	601	32/32	0.96	0.12	46,51,59,64	0
2	SL4	B	601	32/32	0.96	0.11	41,50,56,59	0

The following is a graphical depiction of the model fit to experimental electron density of all instances of the Ligand of Interest. In addition, ligands with molecular weight > 250 and outliers as shown on the geometry validation Tables will also be included. Each fit is shown from different orientation to approximate a three-dimensional view.





## 6.5 Other polymers [i](#)

There are no such residues in this entry.