



# Full wwPDB X-ray Structure Validation Report ⓘ

Dec 5, 2023 – 12:45 am GMT

PDB ID : 1W1Y  
Title : Crystal structure of *S. marcescens* chitinase B in complex with the cyclic dipeptide inhibitor cyclo-(L-Tyr-L-Pro) at 1.85 Å resolution  
Authors : Houston, D.R.; Synstad, B.; Eijsink, V.G.H.; Eggleston, I.; Van Aalten, D.M.F.  
Deposited on : 2004-06-24  
Resolution : 1.85 Å(reported)

This is a Full wwPDB X-ray Structure Validation Report for a publicly released PDB entry.

We welcome your comments at [validation@mail.wwpdb.org](mailto:validation@mail.wwpdb.org)

A user guide is available at

<https://www.wwpdb.org/validation/2017/XrayValidationReportHelp>

with specific help available everywhere you see the ⓘ symbol.

The types of validation reports are described at

<http://www.wwpdb.org/validation/2017/FAQs#types>.

---

The following versions of software and data (see [references ⓘ](#)) were used in the production of this report:

MolProbity : 4.02b-467  
Mogul : 1.8.4, CSD as541be (2020)  
Xtriage (Phenix) : 1.13  
EDS : 2.36  
buster-report : 1.1.7 (2018)  
Percentile statistics : 20191225.v01 (using entries in the PDB archive December 25th 2019)  
Refmac : 5.8.0158  
CCP4 : 7.0.044 (Gargrove)  
Ideal geometry (proteins) : Engh & Huber (2001)  
Ideal geometry (DNA, RNA) : Parkinson et al. (1996)  
Validation Pipeline (wwPDB-VP) : 2.36

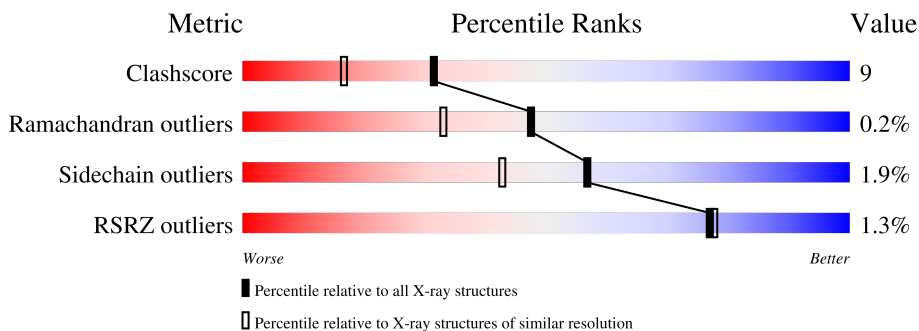
# 1 Overall quality at a glance

The following experimental techniques were used to determine the structure:

*X-RAY DIFFRACTION*

The reported resolution of this entry is 1.85 Å.

Percentile scores (ranging between 0-100) for global validation metrics of the entry are shown in the following graphic. The table shows the number of entries on which the scores are based.



Metric	Whole archive (#Entries)	Similar resolution (#Entries, resolution range(Å))
Clashscore	141614	2625 (1.86-1.86)
Ramachandran outliers	138981	2592 (1.86-1.86)
Sidechain outliers	138945	2592 (1.86-1.86)
RSRZ outliers	127900	2436 (1.86-1.86)

The table below summarises the geometric issues observed across the polymeric chains and their fit to the electron density. The red, orange, yellow and green segments of the lower bar indicate the fraction of residues that contain outliers for  $\geq 3$ , 2, 1 and 0 types of geometric quality criteria respectively. A grey segment represents the fraction of residues that are not modelled. The numeric value for each fraction is indicated below the corresponding segment, with a dot representing fractions  $\leq 5\%$ . The upper red bar (where present) indicates the fraction of residues that have poor fit to the electron density. The numeric value is given above the bar.

Mol	Chain	Length	Quality of chain
1	A	499	 2% (Poor fit)   84% (Green)   15% (Yellow)   •
1	B	499	 % (Poor fit)   86% (Green)   13% (Yellow)   •

The following table lists non-polymeric compounds, carbohydrate monomers and non-standard residues in protein, DNA, RNA chains that are outliers for geometric or electron-density-fit criteria:

Mol	Type	Chain	Res	Chirality	Geometry	Clashes	Electron density
2	GOL	B	1505	-	-	X	-

## 2 Entry composition [i](#)

There are 5 unique types of molecules in this entry. The entry contains 9122 atoms, of which 0 are hydrogens and 0 are deuteriums.

In the tables below, the ZeroOcc column contains the number of atoms modelled with zero occupancy, the AltConf column contains the number of residues with at least one atom in alternate conformation and the Trace column contains the number of residues modelled with at most 2 atoms.

- Molecule 1 is a protein called CHITINASE B.

Mol	Chain	Residues	Atoms					ZeroOcc	AltConf	Trace
			Total	C	N	O	S			
1	A	497	Total 3922	C 2507	N 664	O 736	S 15	2	4	1
1	B	497	Total 3918	C 2505	N 662	O 737	S 14	1	3	0

- Molecule 2 is GLYCEROL (three-letter code: GOL) (formula: C<sub>3</sub>H<sub>8</sub>O<sub>3</sub>).



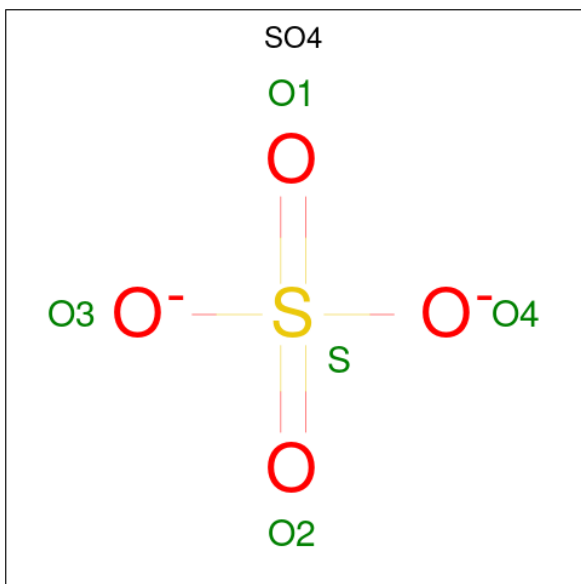
Mol	Chain	Residues	Atoms			ZeroOcc	AltConf
			Total	C	O		
2	A	1	Total 6	C 3	O 3	0	0
2	A	1	Total 6	C 3	O 3	0	0
2	A	1	Total 6	C 3	O 3	0	0
2	A	1	Total 6	C 3	O 3	0	0

*Continued on next page...*

Continued from previous page...

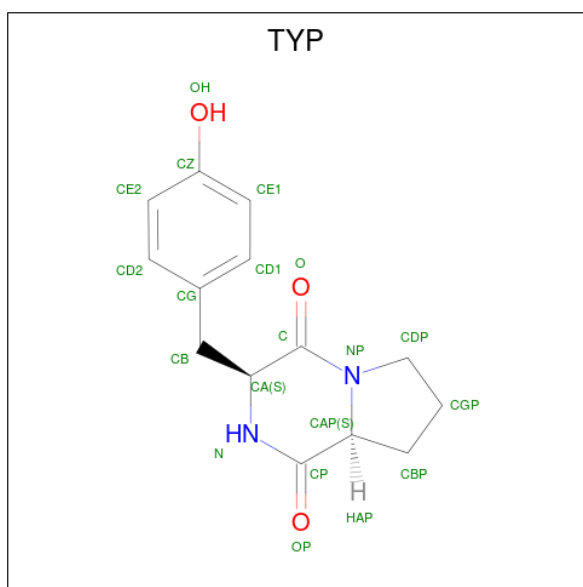
Mol	Chain	Residues	Atoms			ZeroOcc	AltConf
2	A	1	Total	C	O	0	0
			6	3	3		
2	A	1	Total	C	O	0	0
			6	3	3		
2	B	1	Total	C	O	0	0
			6	3	3		
2	B	1	Total	C	O	0	0
			6	3	3		
2	B	1	Total	C	O	0	0
			6	3	3		
2	B	1	Total	C	O	0	0
			6	3	3		
2	B	1	Total	C	O	0	0
			6	3	3		

- Molecule 3 is SULFATE ION (three-letter code: SO4) (formula: O<sub>4</sub>S).



Mol	Chain	Residues	Atoms			ZeroOcc	AltConf
3	A	1	Total	O	S	0	0
			5	4	1		
3	A	1	Total	O	S	0	0
			5	4	1		

- Molecule 4 is CYCLO-(L-TYROSINE-L-PROLINE) INHIBITOR (three-letter code: TYP) (formula: C<sub>14</sub>H<sub>16</sub>N<sub>2</sub>O<sub>3</sub>).



Mol	Chain	Residues	Atoms			ZeroOcc	AltConf	
			Total	C	N			O
4	A	1	19	14	2	3	0	0
4	A	1	19	14	2	3	0	0
4	A	1	19	14	2	3	0	0
4	B	1	19	14	2	3	0	0
4	B	1	19	14	2	3	0	0
4	B	1	19	14	2	3	0	0
4	B	1	19	14	2	3	0	0

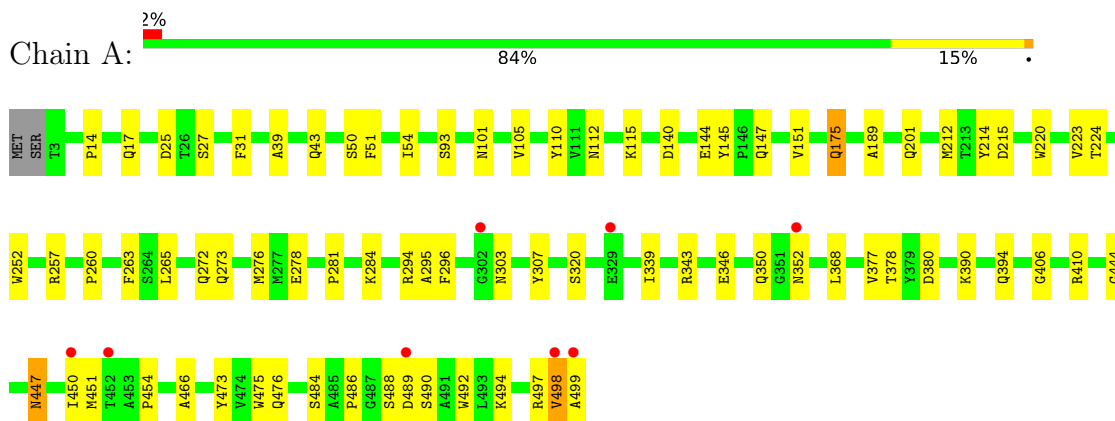
- Molecule 5 is water.

Mol	Chain	Residues	Atoms		ZeroOcc	AltConf
			Total	O		
5	A	501	501	501	0	0
5	B	566	566	566	0	0

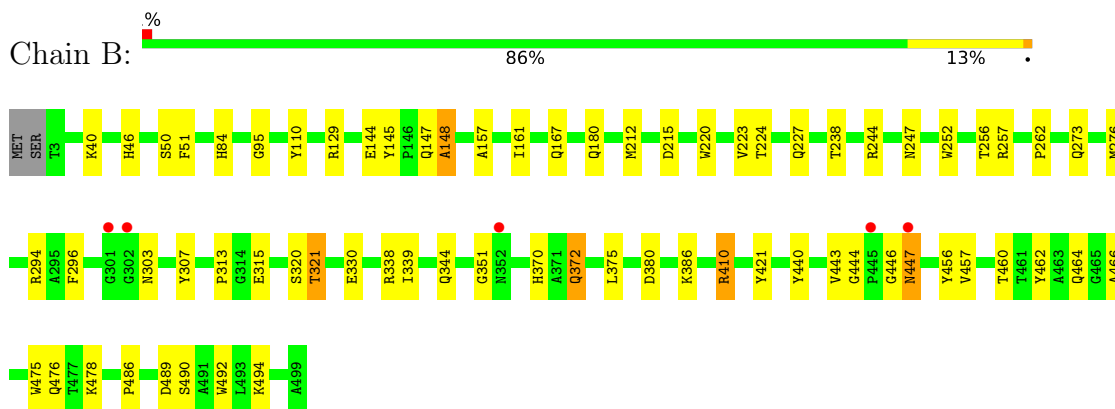
### 3 Residue-property plots

These plots are drawn for all protein, RNA, DNA and oligosaccharide chains in the entry. The first graphic for a chain summarises the proportions of the various outlier classes displayed in the second graphic. The second graphic shows the sequence view annotated by issues in geometry and electron density. Residues are color-coded according to the number of geometric quality criteria for which they contain at least one outlier: green = 0, yellow = 1, orange = 2 and red = 3 or more. A red dot above a residue indicates a poor fit to the electron density ( $RSRZ > 2$ ). Stretches of 2 or more consecutive residues without any outlier are shown as a green connector. Residues present in the sample, but not in the model, are shown in grey.

#### • Molecule 1: CHITINASE B



#### • Molecule 1: CHITINASE B



## 4 Data and refinement statistics

Property	Value	Source
Space group	P 21 21 21	Depositor
Cell constants a, b, c, $\alpha$ , $\beta$ , $\gamma$	55.43Å 103.53Å 183.86Å 90.00° 90.00° 90.00°	Depositor
Resolution (Å)	24.91 – 1.85 24.91 – 1.85	Depositor EDS
% Data completeness (in resolution range)	97.7 (24.91-1.85) 97.5 (24.91-1.85)	Depositor EDS
$R_{merge}$	0.03	Depositor
$R_{sym}$	(Not available)	Depositor
$\langle I/\sigma(I) \rangle$ <sup>1</sup>	7.82 (at 1.85Å)	Xtrriage
Refinement program	CNS 1.0	Depositor
R, $R_{free}$	0.170 , 0.202 0.168 , (Not available)	Depositor DCC
$R_{free}$ test set	886 reflections (0.99%)	wwPDB-VP
Wilson B-factor (Å <sup>2</sup> )	19.0	Xtrriage
Anisotropy	0.043	Xtrriage
Bulk solvent $k_{sol}$ (e/Å <sup>3</sup> ), $B_{sol}$ (Å <sup>2</sup> )	0.37 , 48.9	EDS
L-test for twinning <sup>2</sup>	$\langle  L  \rangle = 0.49$ , $\langle L^2 \rangle = 0.32$	Xtrriage
Estimated twinning fraction	No twinning to report.	Xtrriage
$F_o, F_c$ correlation	0.96	EDS
Total number of atoms	9122	wwPDB-VP
Average B, all atoms (Å <sup>2</sup> )	22.0	wwPDB-VP

Xtrriage's analysis on translational NCS is as follows: *The largest off-origin peak in the Patterson function is 3.68% of the height of the origin peak. No significant pseudotranslation is detected.*

<sup>1</sup>Intensities estimated from amplitudes.

<sup>2</sup>Theoretical values of  $\langle |L| \rangle$ ,  $\langle L^2 \rangle$  for acentric reflections are 0.5, 0.333 respectively for untwinned datasets, and 0.375, 0.2 for perfectly twinned datasets.



## 5 Model quality [i](#)

### 5.1 Standard geometry [i](#)

Bond lengths and bond angles in the following residue types are not validated in this section: TYP, SO4, GOL

The Z score for a bond length (or angle) is the number of standard deviations the observed value is removed from the expected value. A bond length (or angle) with  $|Z| > 5$  is considered an outlier worth inspection. RMSZ is the root-mean-square of all Z scores of the bond lengths (or angles).

Mol	Chain	Bond lengths		Bond angles	
		RMSZ	# Z  >5	RMSZ	# Z  >5
1	A	0.54	0/4049	0.73	0/5518
1	B	0.54	0/4041	0.75	1/5508 (0.0%)
All	All	0.54	0/8090	0.74	1/11026 (0.0%)

There are no bond length outliers.

All (1) bond angle outliers are listed below:

Mol	Chain	Res	Type	Atoms	Z	Observed(°)	Ideal(°)
1	B	351	GLY	N-CA-C	5.94	127.96	113.10

There are no chirality outliers.

There are no planarity outliers.

### 5.2 Too-close contacts [i](#)

In the following table, the Non-H and H(model) columns list the number of non-hydrogen atoms and hydrogen atoms in the chain respectively. The H(added) column lists the number of hydrogen atoms added and optimized by MolProbity. The Clashes column lists the number of clashes within the asymmetric unit, whereas Symm-Clashes lists symmetry-related clashes.

Mol	Chain	Non-H	H(model)	H(added)	Clashes	Symm-Clashes
1	A	3922	0	3750	68	0
1	B	3918	0	3746	72	0
2	A	36	0	48	8	0
2	B	36	0	48	7	0
3	A	10	0	0	0	0
4	A	57	0	47	3	0
4	B	76	0	62	2	0
5	A	501	0	0	10	0

*Continued on next page...*

*Continued from previous page...*

Mol	Chain	Non-H	H(model)	H(added)	Clashes	Symm-Clashes
5	B	566	0	0	11	0
All	All	9122	0	7701	141	0

The all-atom clashscore is defined as the number of clashes found per 1000 atoms (including hydrogen atoms). The all-atom clashscore for this structure is 9.

All (141) close contacts within the same asymmetric unit are listed below, sorted by their clash magnitude.

Atom-1	Atom-2	Interatomic distance (Å)	Clash overlap (Å)
1:B:294:ARG:NH1	1:B:339:ILE:HD11	1.83	0.92
1:A:444:GLY:H	1:A:447:ASN:HD21	1.14	0.89
1:A:484:SER:HB2	1:A:489:ASP:OD1	1.76	0.84
1:A:444:GLY:H	1:A:447:ASN:ND2	1.75	0.84
1:A:175:GLN:H	1:A:175:GLN:HE21	1.26	0.81
1:B:294:ARG:HG2	1:B:339:ILE:CD1	2.11	0.80
1:B:215:ASP:H	1:B:227:GLN:HE21	1.30	0.79
1:B:257:ARG:HE	1:B:443[B]:VAL:HG21	1.50	0.76
1:A:263:PHE:HB2	2:A:1501:GOL:H31	1.66	0.76
1:B:257:ARG:HE	1:B:443[B]:VAL:CG2	1.98	0.75
1:B:330:GLU:H	1:B:344:GLN:HE21	1.36	0.73
1:B:257:ARG:HH21	1:B:443[B]:VAL:HG21	1.53	0.73
1:B:294:ARG:HH11	1:B:339:ILE:HD11	1.53	0.73
1:B:84:HIS:HE1	5:B:2143:HOH:O	1.72	0.72
1:A:175:GLN:H	1:A:175:GLN:NE2	1.87	0.72
1:A:343:ARG:HH22	1:A:410[A]:ARG:HH11	1.34	0.72
1:A:278[B]:GLU:HG2	5:A:2316:HOH:O	1.89	0.72
1:B:330:GLU:HG3	5:B:2386:HOH:O	1.91	0.70
1:A:498:VAL:HG12	1:A:499:ALA:N	2.05	0.70
1:B:40:LYS:HZ1	1:B:410:ARG:HH21	1.38	0.69
1:B:338:ARG:O	1:B:339:ILE:HD13	1.93	0.69
2:A:1503:GOL:H12	5:A:2258:HOH:O	1.93	0.68
1:B:244:ARG:NH2	2:B:1505:GOL:H12	2.11	0.65
1:A:484:SER:OG	1:B:147:GLN:NE2	2.29	0.65
1:B:339:ILE:HD11	5:B:2350:HOH:O	2.00	0.62
1:B:257:ARG:NH1	5:B:2327:HOH:O	2.33	0.62
1:B:257:ARG:NE	1:B:443[B]:VAL:HG21	2.14	0.61
1:B:330:GLU:H	1:B:344:GLN:NE2	1.98	0.61
1:A:273:GLN:HA	1:A:276:MET:HE2	1.83	0.61
1:B:257:ARG:NH2	1:B:443[B]:VAL:HG21	2.15	0.61
1:A:451:MET:O	1:A:499:ALA:N	2.34	0.61
1:B:464:GLN:HG2	5:B:2520:HOH:O	2.03	0.59

*Continued on next page...*

*Continued from previous page...*

Atom-1	Atom-2	Interatomic distance (Å)	Clash overlap (Å)
1:B:144:GLU:HA	1:B:145:TYR:CG	2.38	0.58
1:B:145:TYR:OH	1:B:212:MET:HE1	2.04	0.57
1:A:144:GLU:HA	1:A:145:TYR:CG	2.39	0.56
1:B:294:ARG:HG2	1:B:339:ILE:HD12	1.88	0.56
1:B:370:HIS:CE1	1:B:372:GLN:HB3	2.41	0.56
1:B:294:ARG:NH1	1:B:339:ILE:CD1	2.63	0.54
1:B:256:THR:HG23	2:B:1505:GOL:H2	1.89	0.54
1:A:147:GLN:O	1:A:151:VAL:HG23	2.08	0.53
1:A:444:GLY:N	1:A:447:ASN:HD21	1.94	0.53
1:A:223:VAL:HG12	5:A:2268:HOH:O	2.08	0.53
1:A:343:ARG:CZ	1:A:410[A]:ARG:HD2	2.39	0.53
1:B:129:ARG:HD2	5:B:2196:HOH:O	2.08	0.53
1:A:343:ARG:NH2	1:A:410[A]:ARG:HH11	2.05	0.53
1:B:486:PRO:HA	1:B:492:TRP:CD1	2.45	0.52
1:A:346:GLU:O	1:A:350:GLN:HG2	2.10	0.51
1:A:265:LEU:HD21	2:A:1499:GOL:H31	1.93	0.51
1:A:263:PHE:HB2	2:A:1501:GOL:C3	2.38	0.51
1:B:313:PRO:HB3	1:B:315:GLU:OE2	2.10	0.51
1:B:145:TYR:OH	1:B:212:MET:CE	2.58	0.51
1:B:215:ASP:H	1:B:227:GLN:NE2	2.04	0.51
1:A:201:GLN:HG3	5:A:2257:HOH:O	2.11	0.50
1:A:214:TYR:O	1:A:215:ASP:HB2	2.11	0.50
1:B:315:GLU:H	1:B:315:GLU:CD	2.14	0.49
1:A:14:PRO:HG2	1:A:17:GLN:HG3	1.95	0.49
1:A:473:TYR:CD1	1:A:494:LYS:HD3	2.48	0.49
1:A:450:ILE:HD11	1:A:497:ARG:CZ	2.42	0.49
1:A:488:SER:O	1:B:148:ALA:HB2	2.12	0.49
1:A:212[A]:MET:HE2	5:A:2265:HOH:O	2.11	0.49
1:A:25:ASP:OD1	1:A:27:SER:OG	2.28	0.49
1:B:224:THR:HG22	1:B:296:PHE:CD2	2.49	0.48
1:B:167:GLN:HG2	5:B:2240:HOH:O	2.13	0.48
1:A:189:ALA:HB3	5:A:2288:HOH:O	2.13	0.48
1:A:454:PRO:HB2	5:A:2464:HOH:O	2.14	0.48
1:B:386:LYS:HG2	1:B:421:TYR:CZ	2.49	0.48
1:A:447:ASN:H	1:A:447:ASN:HD22	1.62	0.48
1:A:295:ALA:HB2	1:A:377:VAL:HG22	1.97	0.47
1:B:257:ARG:NE	1:B:443[B]:VAL:CG2	2.71	0.47
1:B:410:ARG:HE	1:B:410:ARG:CA	2.27	0.47
1:B:273:GLN:HA	1:B:276:MET:HE2	1.96	0.47
1:B:220:TRP:CD2	4:B:1508:TYP:HA	2.50	0.47
1:B:410:ARG:HE	1:B:410:ARG:HA	1.80	0.46

*Continued on next page...*

*Continued from previous page...*

Atom-1	Atom-2	Interatomic distance (Å)	Clash overlap (Å)
1:A:294:ARG:NH1	1:A:339:ILE:HD11	2.30	0.46
1:B:238:THR:HB	1:B:262:PRO:HB2	1.97	0.46
1:B:257:ARG:CZ	1:B:443[B]:VAL:HG21	2.45	0.46
1:B:321:THR:HG23	1:B:321:THR:O	2.15	0.46
1:B:40:LYS:NZ	1:B:410:ARG:HH21	2.12	0.46
1:A:112:ASN:HA	1:A:115:LYS:HG3	1.98	0.46
1:A:489:ASP:OD1	2:A:1500:GOL:H32	2.16	0.45
1:B:244:ARG:NH2	2:B:1505:GOL:C1	2.79	0.45
1:A:489:ASP:HB3	1:A:492:TRP:HD1	1.82	0.45
1:B:339:ILE:CD1	5:B:2350:HOH:O	2.61	0.45
5:A:2200:HOH:O	1:B:489:ASP:HA	2.15	0.45
1:A:475:TRP:CD2	1:A:486:PRO:HB3	2.52	0.45
1:B:50:SER:HA	1:B:51:PHE:HA	1.72	0.45
1:B:144:GLU:HA	1:B:145:TYR:CD2	2.52	0.44
1:A:93:SER:HA	1:A:140:ASP:O	2.17	0.44
1:B:244:ARG:HH22	2:B:1505:GOL:H12	1.79	0.44
1:B:257:ARG:HD3	5:B:2327:HOH:O	2.17	0.44
1:A:224:THR:HG22	1:A:296:PHE:CD2	2.52	0.44
1:A:272:GLN:O	1:A:276:MET:HG3	2.17	0.44
1:A:54:ILE:HD12	1:A:110:TYR:CD2	2.53	0.43
1:A:307:TYR:CD1	1:A:307:TYR:N	2.86	0.43
1:B:440:TYR:HA	2:B:1501:GOL:H32	2.01	0.43
1:A:50:SER:HA	1:A:51:PHE:HA	1.72	0.43
2:A:1502:GOL:H12	1:B:252:TRP:CE2	2.54	0.43
1:B:466:ALA:O	1:B:476:GLN:HA	2.18	0.43
1:A:101:ASN:HA	1:A:144:GLU:O	2.19	0.43
1:B:486:PRO:HA	1:B:492:TRP:CG	2.54	0.43
1:A:212[B]:MET:HE1	4:A:1507:TYP:HGP2	2.00	0.43
1:A:260:PRO:HA	2:A:1502:GOL:O3	2.18	0.43
1:A:105:VAL:HG13	5:A:2137:HOH:O	2.19	0.42
1:A:252:TRP:CE2	2:B:1505:GOL:H11	2.54	0.42
1:B:475:TRP:CZ3	1:B:494:LYS:HG3	2.53	0.42
1:A:220:TRP:CD2	4:A:1509:TYP:HA	2.54	0.42
1:A:368:LEU:HB2	1:A:377:VAL:HB	2.01	0.42
1:B:307:TYR:CD1	1:B:307:TYR:N	2.84	0.42
1:A:175:GLN:HE21	1:A:175:GLN:N	2.04	0.42
1:A:343:ARG:NH2	1:A:410[A]:ARG:HD2	2.34	0.42
1:B:444:GLY:C	1:B:446:GLY:N	2.72	0.42
1:A:257:ARG:NH2	1:A:494:LYS:O	2.49	0.42
1:A:281:PRO:HG2	1:A:284:LYS:HG3	2.02	0.42
1:B:157:ALA:O	1:B:161:ILE:HG13	2.19	0.42

*Continued on next page...*

Continued from previous page...

Atom-1	Atom-2	Interatomic distance (Å)	Clash overlap (Å)
1:A:144:GLU:HA	1:A:145:TYR:CD1	2.55	0.42
1:B:244:ARG:HH21	2:B:1505:GOL:C1	2.33	0.42
1:B:95:GLY:HA2	1:B:110:TYR:OH	2.19	0.42
1:A:484:SER:HB3	1:A:489:ASP:HB2	2.02	0.42
1:A:223:VAL:CG2	1:A:307:TYR:HA	2.49	0.41
1:B:223:VAL:HG12	1:B:307:TYR:HA	2.01	0.41
1:A:31:PHE:CG	1:A:406:GLY:HA2	2.55	0.41
1:A:39:ALA:O	1:A:43:GLN:HG3	2.20	0.41
1:A:50:SER:HB2	1:A:51:PHE:CG	2.55	0.41
1:A:390:LYS:O	1:A:394:GLN:HG3	2.20	0.41
1:A:486:PRO:HA	1:A:492:TRP:CG	2.56	0.41
1:B:456:TYR:CE1	1:B:462:TYR:HE2	2.39	0.41
1:B:478:LYS:HE3	1:B:490:SER:O	2.20	0.41
1:A:50:SER:HB2	1:A:51:PHE:CD1	2.56	0.41
1:B:370:HIS:HE1	1:B:372:GLN:HB3	1.85	0.41
4:B:1507:TYP:HBP1	5:B:2368:HOH:O	2.19	0.41
1:A:220:TRP:CE2	4:A:1509:TYP:HA	2.55	0.41
1:B:370:HIS:HB3	1:B:375:LEU:HB2	2.02	0.41
1:B:457:VAL:HB	1:B:460:THR:OG1	2.20	0.41
1:B:50:SER:HB2	1:B:51:PHE:CG	2.56	0.40
2:A:1503:GOL:H11	5:A:2489:HOH:O	2.20	0.40
1:A:466:ALA:O	1:A:476:GLN:HA	2.21	0.40
1:A:486:PRO:HA	1:A:492:TRP:CD1	2.56	0.40
1:B:46:HIS:NE2	1:B:180:GLN:NE2	2.68	0.40
1:B:247:ASN:HB3	5:B:2313:HOH:O	2.22	0.40

There are no symmetry-related clashes.

## 5.3 Torsion angles [i](#)

### 5.3.1 Protein backbone [i](#)

In the following table, the Percentiles column shows the percent Ramachandran outliers of the chain as a percentile score with respect to all X-ray entries followed by that with respect to entries of similar resolution.

The Analysed column shows the number of residues for which the backbone conformation was analysed, and the total number of residues.

Mol	Chain	Analysed	Favoured	Allowed	Outliers	Percentiles
1	A	499/499 (100%)	489 (98%)	9 (2%)	1 (0%)	47 33

Continued on next page...

*Continued from previous page...*

Mol	Chain	Analysed	Favoured	Allowed	Outliers	Percentiles	
1	B	498/499 (100%)	485 (97%)	12 (2%)	1 (0%)	47	33
All	All	997/998 (100%)	974 (98%)	21 (2%)	2 (0%)	47	33

All (2) Ramachandran outliers are listed below:

Mol	Chain	Res	Type
1	A	498	VAL
1	B	148	ALA

### 5.3.2 Protein sidechains [i](#)

In the following table, the Percentiles column shows the percent sidechain outliers of the chain as a percentile score with respect to all X-ray entries followed by that with respect to entries of similar resolution.

The Analysed column shows the number of residues for which the sidechain conformation was analysed, and the total number of residues.

Mol	Chain	Analysed	Rotameric	Outliers	Percentiles	
1	A	406/405 (100%)	398 (98%)	8 (2%)	55	40
1	B	405/405 (100%)	397 (98%)	8 (2%)	55	40
All	All	811/810 (100%)	795 (98%)	16 (2%)	57	40

All (16) residues with a non-rotameric sidechain are listed below:

Mol	Chain	Res	Type
1	A	175	GLN
1	A	303	ASN
1	A	320	SER
1	A	352	ASN
1	A	378	THR
1	A	380	ASP
1	A	447	ASN
1	A	490	SER
1	B	303	ASN
1	B	320	SER
1	B	321	THR
1	B	372	GLN
1	B	380	ASP
1	B	410	ARG

*Continued on next page...*

*Continued from previous page...*

Mol	Chain	Res	Type
1	B	447[A]	ASN
1	B	447[B]	ASN

Sometimes sidechains can be flipped to improve hydrogen bonding and reduce clashes. All (22) such sidechains are listed below:

Mol	Chain	Res	Type
1	A	35	ASN
1	A	109	ASN
1	A	125	GLN
1	A	175	GLN
1	A	303	ASN
1	A	347	GLN
1	A	352	ASN
1	A	447	ASN
1	A	464	GLN
1	B	35	ASN
1	B	57	ASN
1	B	84	HIS
1	B	112	ASN
1	B	180	GLN
1	B	227	GLN
1	B	273	GLN
1	B	303	ASN
1	B	344	GLN
1	B	347	GLN
1	B	352	ASN
1	B	394	GLN
1	B	431	GLN

### 5.3.3 RNA [i](#)

There are no RNA molecules in this entry.

### 5.4 Non-standard residues in protein, DNA, RNA chains [i](#)

There are no non-standard protein/DNA/RNA residues in this entry.

### 5.5 Carbohydrates [i](#)

There are no monosaccharides in this entry.

## 5.6 Ligand geometry [i](#)

21 ligands are modelled in this entry.

In the following table, the Counts columns list the number of bonds (or angles) for which Mogul statistics could be retrieved, the number of bonds (or angles) that are observed in the model and the number of bonds (or angles) that are defined in the Chemical Component Dictionary. The Link column lists molecule types, if any, to which the group is linked. The Z score for a bond length (or angle) is the number of standard deviations the observed value is removed from the expected value. A bond length (or angle) with  $|Z| > 2$  is considered an outlier worth inspection. RMSZ is the root-mean-square of all Z scores of the bond lengths (or angles).

Mol	Type	Chain	Res	Link	Bond lengths			Bond angles		
					Counts	RMSZ	# Z  > 2	Counts	RMSZ	# Z  > 2
3	SO4	A	1505	-	4,4,4	0.33	0	6,6,6	0.10	0
2	GOL	A	1500	-	5,5,5	0.42	0	5,5,5	0.24	0
4	TYP	B	1508	-	21,21,21	1.57	2 (9%)	30,30,30	1.25	4 (13%)
2	GOL	A	1499	-	5,5,5	0.40	0	5,5,5	0.16	0
4	TYP	B	1509	-	21,21,21	1.65	3 (14%)	30,30,30	1.26	4 (13%)
2	GOL	A	1504	-	5,5,5	0.37	0	5,5,5	0.26	0
2	GOL	B	1501	-	5,5,5	0.36	0	5,5,5	0.31	0
3	SO4	A	1506	-	4,4,4	0.31	0	6,6,6	0.12	0
2	GOL	A	1501	-	5,5,5	0.23	0	5,5,5	0.36	0
4	TYP	B	1507	-	21,21,21	1.69	2 (9%)	30,30,30	1.30	3 (10%)
4	TYP	A	1507	-	21,21,21	1.45	2 (9%)	30,30,30	1.41	3 (10%)
2	GOL	B	1500	-	5,5,5	0.31	0	5,5,5	0.15	0
2	GOL	B	1502	-	5,5,5	0.40	0	5,5,5	0.31	0
4	TYP	A	1509	-	21,21,21	1.65	3 (14%)	30,30,30	1.27	4 (13%)
4	TYP	A	1508	-	21,21,21	1.64	2 (9%)	30,30,30	1.31	4 (13%)
2	GOL	A	1502	-	5,5,5	0.49	0	5,5,5	0.23	0
2	GOL	B	1504	-	5,5,5	0.38	0	5,5,5	0.28	0
2	GOL	B	1505	-	5,5,5	0.40	0	5,5,5	0.16	0
2	GOL	B	1503	-	5,5,5	0.38	0	5,5,5	0.26	0
2	GOL	A	1503	-	5,5,5	0.23	0	5,5,5	0.30	0
4	TYP	B	1506	-	21,21,21	1.43	2 (9%)	30,30,30	1.39	4 (13%)

In the following table, the Chirals column lists the number of chiral outliers, the number of chiral centers analysed, the number of these observed in the model and the number defined in the Chemical Component Dictionary. Similar counts are reported in the Torsion and Rings columns. '-' means no outliers of that kind were identified.

Mol	Type	Chain	Res	Link	Chirals	Torsions	Rings
2	GOL	A	1500	-	-	0/4/4/4	-
4	TYP	B	1508	-	-	0/4/30/30	0/3/3/3

*Continued on next page...*



*Continued from previous page...*

Mol	Type	Chain	Res	Link	Chirals	Torsions	Rings
2	GOL	A	1499	-	-	0/4/4/4	-
4	TYP	B	1509	-	-	0/4/30/30	0/3/3/3
2	GOL	A	1504	-	-	0/4/4/4	-
2	GOL	B	1501	-	-	0/4/4/4	-
2	GOL	A	1501	-	-	0/4/4/4	-
4	TYP	B	1507	-	-	0/4/30/30	0/3/3/3
4	TYP	A	1507	-	-	0/4/30/30	0/3/3/3
2	GOL	B	1500	-	-	0/4/4/4	-
2	GOL	B	1502	-	-	0/4/4/4	-
4	TYP	A	1509	-	-	0/4/30/30	0/3/3/3
4	TYP	A	1508	-	-	0/4/30/30	0/3/3/3
2	GOL	A	1502	-	-	0/4/4/4	-
2	GOL	B	1504	-	-	0/4/4/4	-
2	GOL	B	1505	-	-	0/4/4/4	-
2	GOL	B	1503	-	-	0/4/4/4	-
2	GOL	A	1503	-	-	0/4/4/4	-
4	TYP	B	1506	-	-	0/4/30/30	0/3/3/3

All (16) bond length outliers are listed below:

Mol	Chain	Res	Type	Atoms	Z	Observed(Å)	Ideal(Å)
4	B	1507	TYP	CP-N	5.52	1.42	1.33
4	B	1509	TYP	CP-N	5.24	1.41	1.33
4	B	1508	TYP	CP-N	4.87	1.41	1.33
4	A	1509	TYP	CP-N	4.83	1.41	1.33
4	A	1508	TYP	CP-N	4.71	1.40	1.33
4	A	1507	TYP	CP-N	4.60	1.40	1.33
4	B	1506	TYP	CP-N	4.38	1.40	1.33
4	A	1508	TYP	C-NP	3.58	1.42	1.34
4	B	1507	TYP	C-NP	3.39	1.41	1.34
4	A	1509	TYP	C-NP	3.37	1.41	1.34
4	B	1509	TYP	C-NP	3.14	1.41	1.34
4	B	1508	TYP	C-NP	2.98	1.41	1.34
4	A	1507	TYP	C-NP	2.65	1.40	1.34
4	B	1506	TYP	C-NP	2.33	1.39	1.34
4	A	1509	TYP	CA-C	2.14	1.55	1.52
4	B	1509	TYP	CA-N	2.03	1.49	1.46

All (26) bond angle outliers are listed below:

Mol	Chain	Res	Type	Atoms	Z	Observed(°)	Ideal(°)
4	B	1507	TYP	CDP-NP-C	3.91	129.93	123.10

*Continued on next page...*

*Continued from previous page...*

Mol	Chain	Res	Type	Atoms	Z	Observed(°)	Ideal(°)
4	A	1508	TYP	CDP-NP-C	3.85	129.82	123.10
4	A	1509	TYP	CDP-NP-C	3.77	129.69	123.10
4	B	1509	TYP	CDP-NP-C	3.76	129.66	123.10
4	B	1506	TYP	CDP-NP-C	3.72	129.59	123.10
4	A	1507	TYP	CDP-NP-C	3.69	129.55	123.10
4	B	1508	TYP	CDP-NP-C	3.54	129.29	123.10
4	B	1506	TYP	CA-N-CP	-3.13	118.86	125.81
4	A	1507	TYP	CA-N-CP	-2.93	119.31	125.81
4	A	1507	TYP	CAP-NP-C	-2.92	118.36	124.30
4	B	1506	TYP	CAP-NP-C	-2.83	118.53	124.30
4	B	1507	TYP	CA-N-CP	-2.77	119.67	125.81
4	A	1508	TYP	CA-N-CP	-2.68	119.87	125.81
4	B	1508	TYP	O-C-NP	-2.64	119.22	123.03
4	B	1509	TYP	O-C-NP	-2.62	119.25	123.03
4	A	1509	TYP	O-C-NP	-2.56	119.34	123.03
4	A	1508	TYP	CAP-NP-C	-2.53	119.14	124.30
4	B	1507	TYP	CAP-NP-C	-2.51	119.18	124.30
4	B	1509	TYP	CAP-NP-C	-2.42	119.37	124.30
4	B	1508	TYP	CA-N-CP	-2.41	120.47	125.81
4	B	1509	TYP	CA-N-CP	-2.28	120.75	125.81
4	A	1508	TYP	O-C-NP	-2.26	119.77	123.03
4	A	1509	TYP	CAP-NP-C	-2.22	119.78	124.30
4	A	1509	TYP	CA-N-CP	-2.14	121.07	125.81
4	B	1508	TYP	CAP-NP-C	-2.13	119.95	124.30
4	B	1506	TYP	C-CA-N	-2.10	108.69	112.60

There are no chirality outliers.

There are no torsion outliers.

There are no ring outliers.

11 monomers are involved in 20 short contacts:

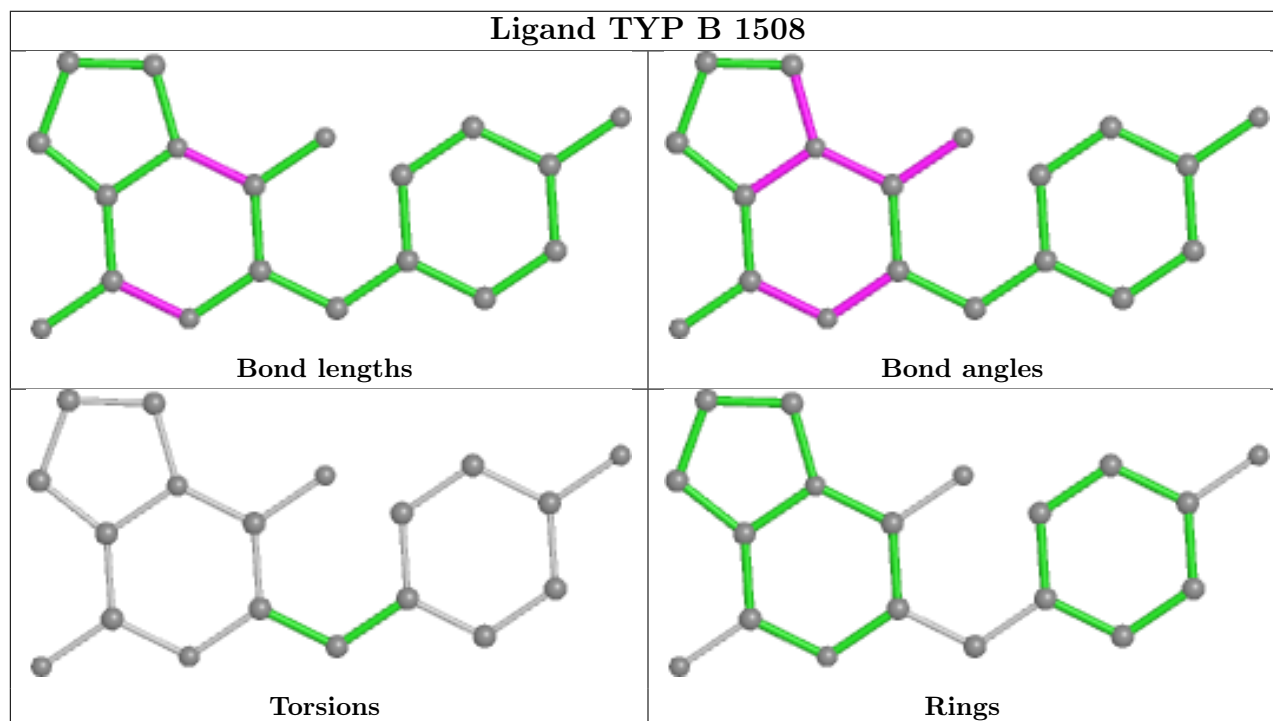
Mol	Chain	Res	Type	Clashes	Symm-Clashes
2	A	1500	GOL	1	0
4	B	1508	TYP	1	0
2	A	1499	GOL	1	0
2	B	1501	GOL	1	0
2	A	1501	GOL	2	0
4	B	1507	TYP	1	0
4	A	1507	TYP	1	0
4	A	1509	TYP	2	0
2	A	1502	GOL	2	0

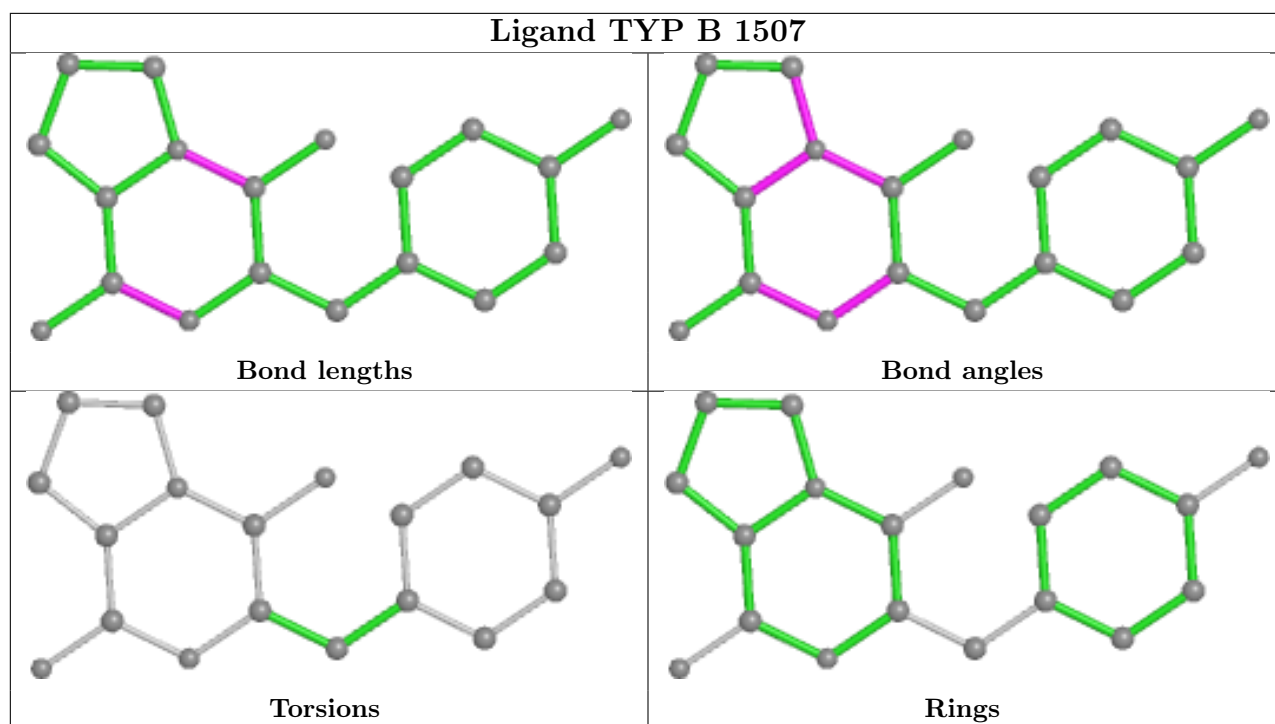
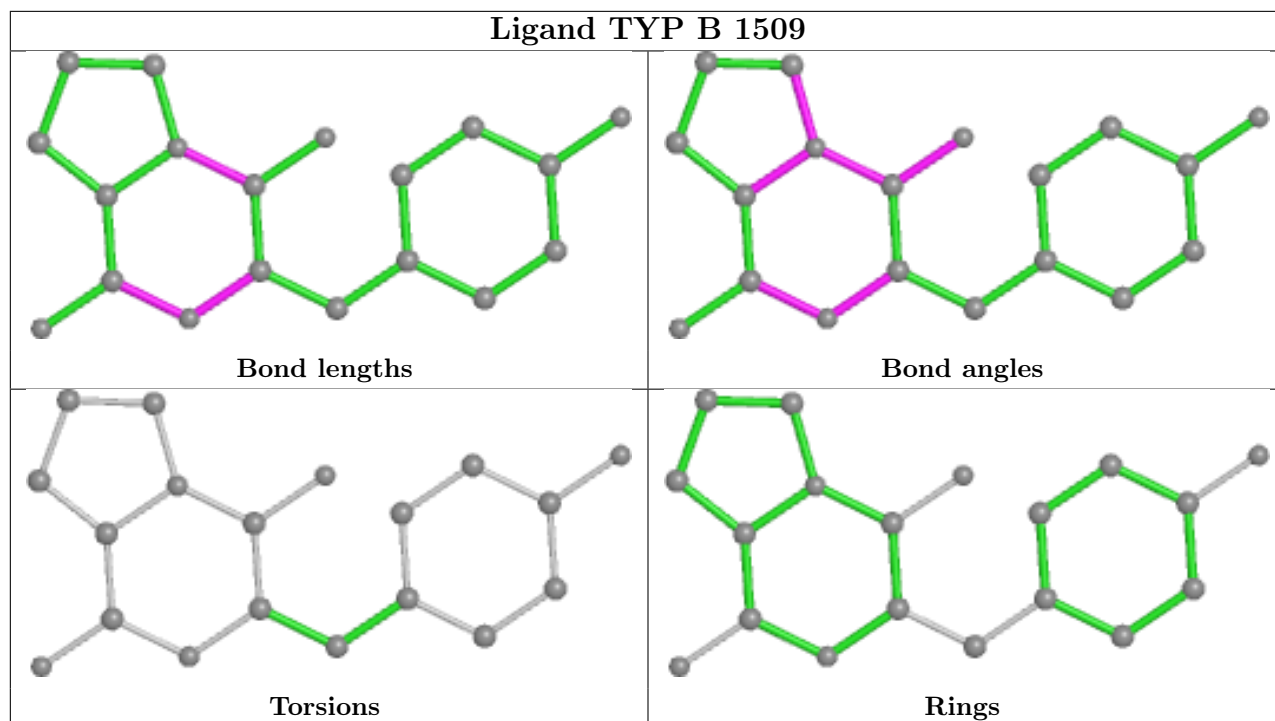
*Continued on next page...*

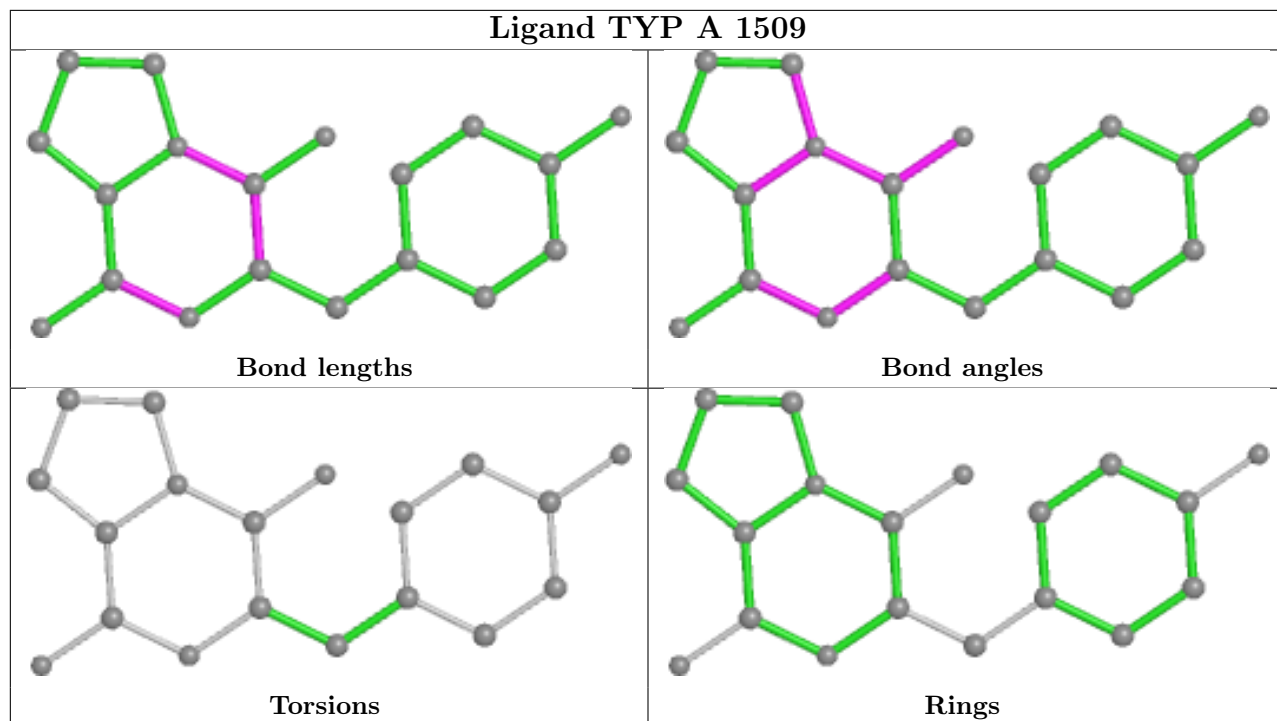
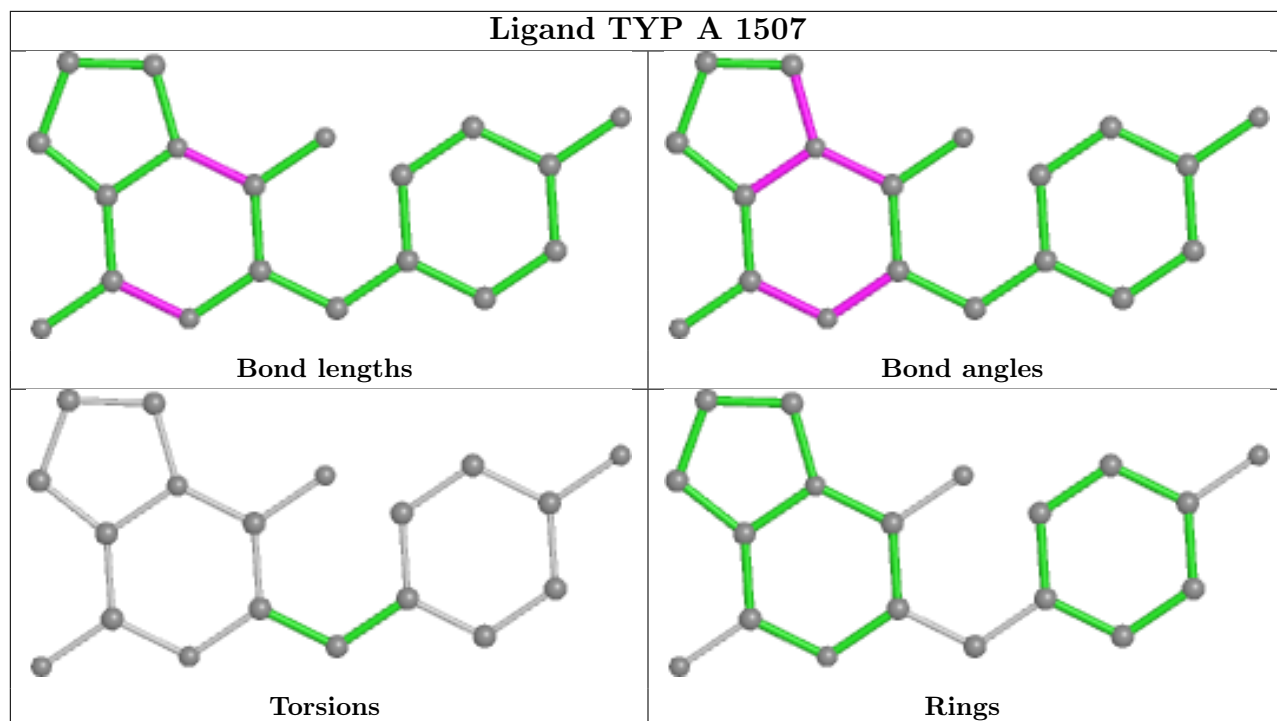
*Continued from previous page...*

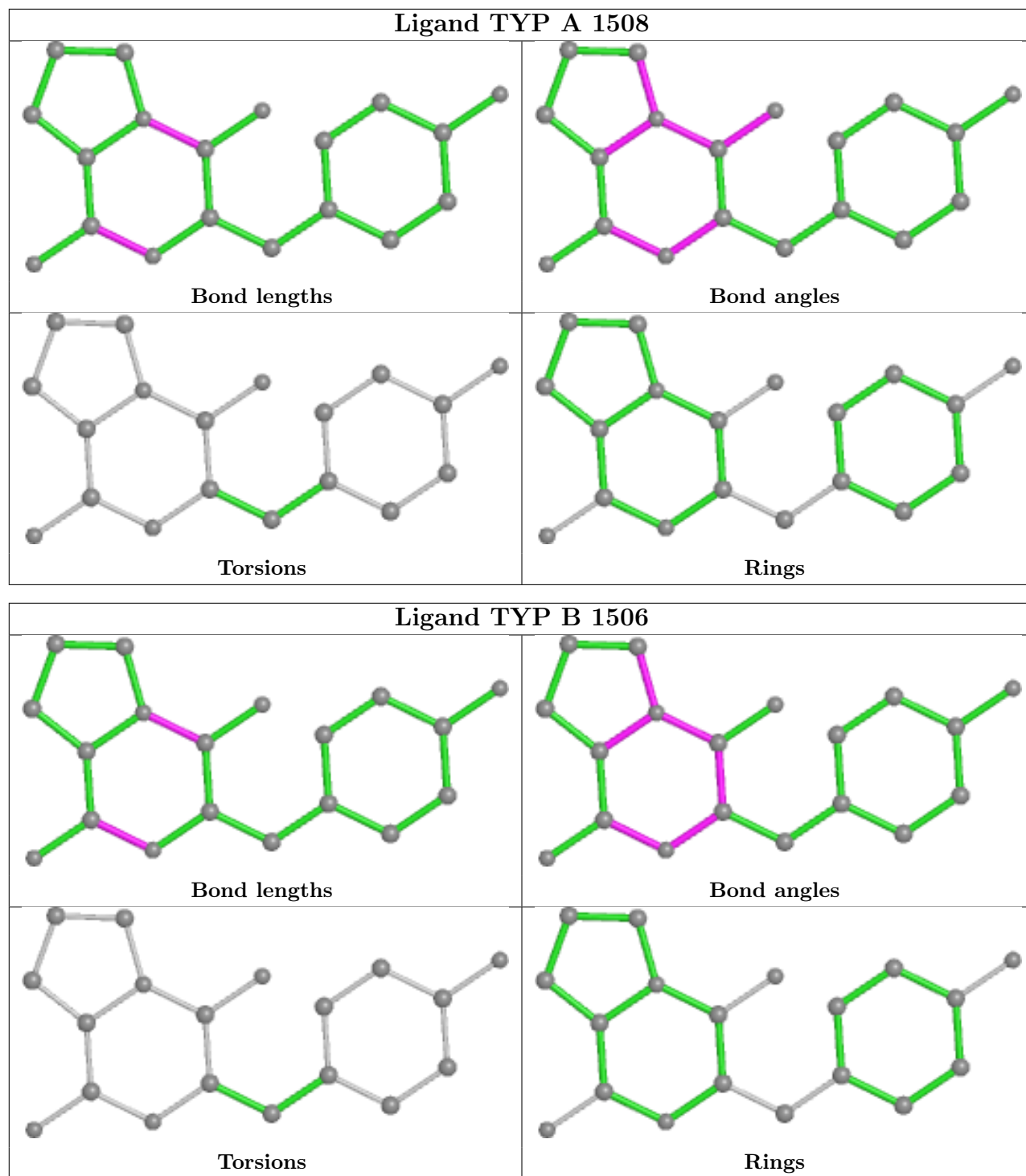
Mol	Chain	Res	Type	Clashes	Symm-Clashes
2	B	1505	GOL	6	0
2	A	1503	GOL	2	0

The following is a two-dimensional graphical depiction of Mogul quality analysis of bond lengths, bond angles, torsion angles, and ring geometry for all instances of the Ligand of Interest. In addition, ligands with molecular weight > 250 and outliers as shown on the validation Tables will also be included. For torsion angles, if less than 5% of the Mogul distribution of torsion angles is within 10 degrees of the torsion angle in question, then that torsion angle is considered an outlier. Any bond that is central to one or more torsion angles identified as an outlier by Mogul will be highlighted in the graph. For rings, the root-mean-square deviation (RMSD) between the ring in question and similar rings identified by Mogul is calculated over all ring torsion angles. If the average RMSD is greater than 60 degrees and the minimal RMSD between the ring in question and any Mogul-identified rings is also greater than 60 degrees, then that ring is considered an outlier. The outliers are highlighted in purple. The color gray indicates Mogul did not find sufficient equivalents in the CSD to analyse the geometry.









## 5.7 Other polymers [\(i\)](#)

There are no such residues in this entry.

## 5.8 Polymer linkage issues

There are no chain breaks in this entry.

## 6 Fit of model and data [i](#)

### 6.1 Protein, DNA and RNA chains [i](#)

In the following table, the column labelled ‘#RSRZ > 2’ contains the number (and percentage) of RSRZ outliers, followed by percent RSRZ outliers for the chain as percentile scores relative to all X-ray entries and entries of similar resolution. The OWAB column contains the minimum, median, 95<sup>th</sup> percentile and maximum values of the occupancy-weighted average B-factor per residue. The column labelled ‘Q < 0.9’ lists the number of (and percentage) of residues with an average occupancy less than 0.9.

Mol	Chain	Analysed	<RSRZ>	#RSRZ>2	OWAB(Å <sup>2</sup> )	Q<0.9
1	A	497/499 (99%)	-0.14	8 (1%) 72 72	10, 20, 38, 53	1 (0%)
1	B	497/499 (99%)	-0.19	5 (1%) 82 82	10, 19, 31, 42	1 (0%)
All	All	994/998 (99%)	-0.17	13 (1%) 77 78	10, 20, 34, 53	2 (0%)

All (13) RSRZ outliers are listed below:

Mol	Chain	Res	Type	RSRZ
1	A	499	ALA	10.5
1	B	445	PRO	5.1
1	A	352	ASN	4.3
1	A	302	GLY	3.7
1	B	301	GLY	3.0
1	A	498	VAL	2.9
1	A	329	GLU	2.9
1	A	450	ILE	2.7
1	A	489	ASP	2.5
1	B	447[A]	ASN	2.3
1	A	452	THR	2.2
1	B	302	GLY	2.2
1	B	352	ASN	2.1

### 6.2 Non-standard residues in protein, DNA, RNA chains [i](#)

There are no non-standard protein/DNA/RNA residues in this entry.

### 6.3 Carbohydrates [i](#)

There are no monosaccharides in this entry.



## 6.4 Ligands

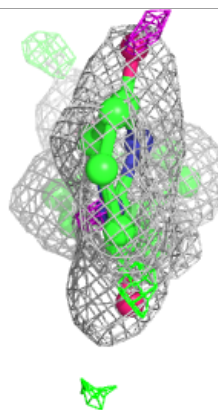
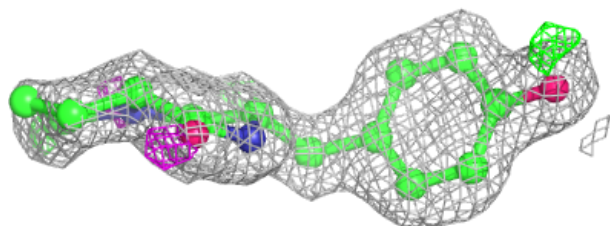
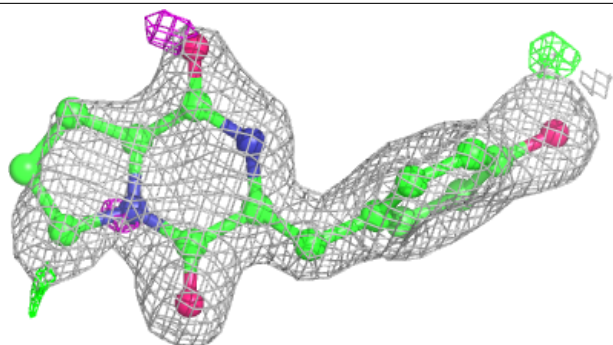
In the following table, the Atoms column lists the number of modelled atoms in the group and the number defined in the chemical component dictionary. The B-factors column lists the minimum, median, 95<sup>th</sup> percentile and maximum values of B factors of atoms in the group. The column labelled 'Q< 0.9' lists the number of atoms with occupancy less than 0.9.

Mol	Type	Chain	Res	Atoms	RSCC	RSR	B-factors(Å <sup>2</sup> )	Q<0.9
2	GOL	B	1505	6/6	0.67	0.38	48,54,55,58	0
2	GOL	A	1502	6/6	0.79	0.26	27,35,37,40	0
2	GOL	A	1503	6/6	0.82	0.23	43,48,50,50	0
2	GOL	B	1500	6/6	0.83	0.21	34,40,41,45	0
3	SO4	A	1506	5/5	0.83	0.27	68,70,71,71	0
2	GOL	A	1501	6/6	0.86	0.21	25,38,39,40	0
2	GOL	B	1504	6/6	0.87	0.16	37,40,41,45	0
2	GOL	B	1501	6/6	0.88	0.17	24,34,34,36	0
2	GOL	A	1499	6/6	0.90	0.14	36,37,40,45	0
4	TYP	A	1508	19/19	0.90	0.17	21,31,38,39	0
3	SO4	A	1505	5/5	0.91	0.15	71,71,72,72	0
4	TYP	A	1509	19/19	0.91	0.13	31,33,35,36	0
2	GOL	A	1500	6/6	0.92	0.15	24,25,27,28	0
4	TYP	B	1509	19/19	0.93	0.11	24,25,29,30	0
4	TYP	B	1507	19/19	0.94	0.13	17,25,30,31	0
2	GOL	A	1504	6/6	0.94	0.10	29,32,32,33	0
4	TYP	B	1506	19/19	0.95	0.10	11,15,20,21	0
2	GOL	B	1502	6/6	0.95	0.12	21,24,25,26	0
4	TYP	B	1508	19/19	0.95	0.11	23,25,26,26	0
4	TYP	A	1507	19/19	0.95	0.09	12,16,25,25	0
2	GOL	B	1503	6/6	0.96	0.09	25,26,29,29	0

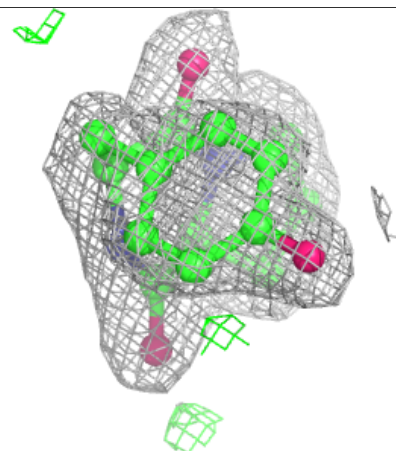
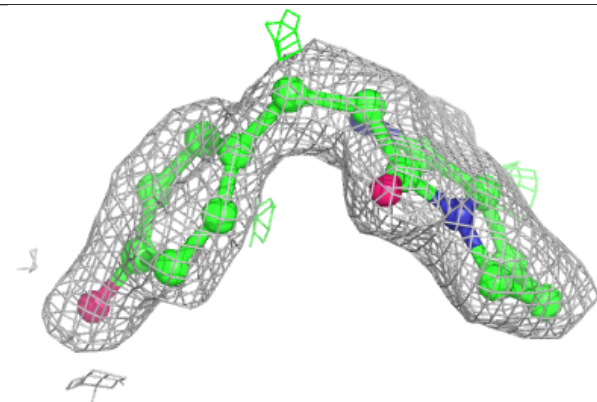
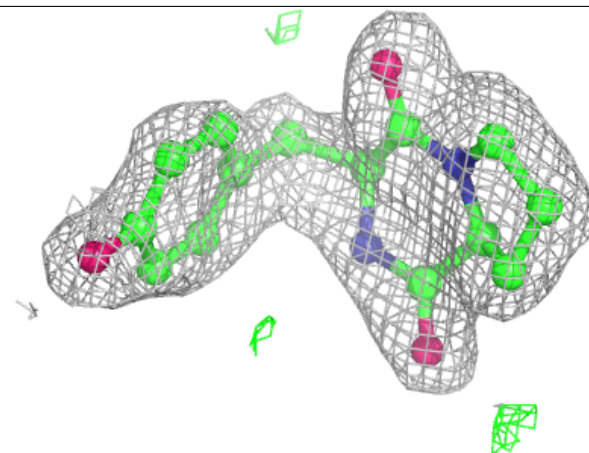
The following is a graphical depiction of the model fit to experimental electron density of all instances of the Ligand of Interest. In addition, ligands with molecular weight > 250 and outliers as shown on the geometry validation Tables will also be included. Each fit is shown from different orientation to approximate a three-dimensional view.

**Electron density around TYP A 1508:**

$2mF_o-DF_c$  (at 0.7 rmsd) in gray  
 $mF_o-DF_c$  (at 3 rmsd) in purple (negative)  
and green (positive)

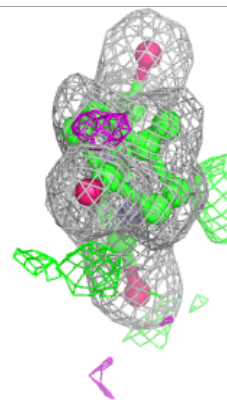
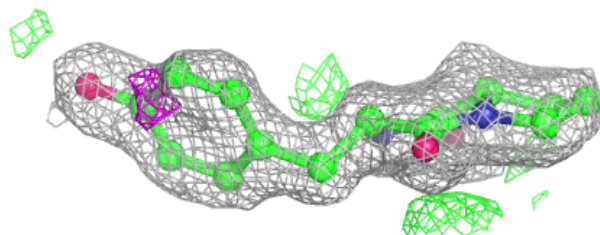
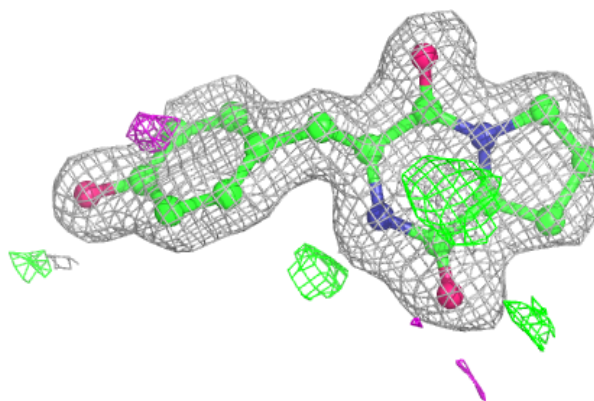
**Electron density around TYP A 1509:**

$2mF_o-DF_c$  (at 0.7 rmsd) in gray  
 $mF_o-DF_c$  (at 3 rmsd) in purple (negative)  
and green (positive)

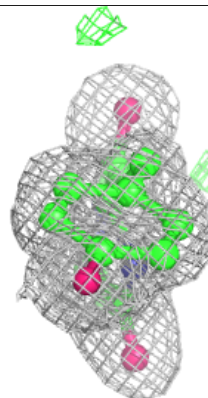
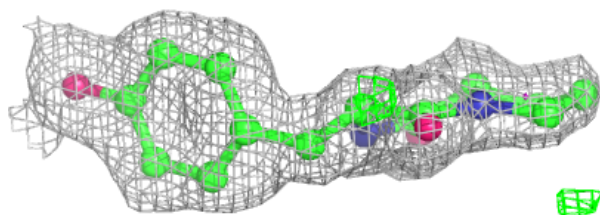
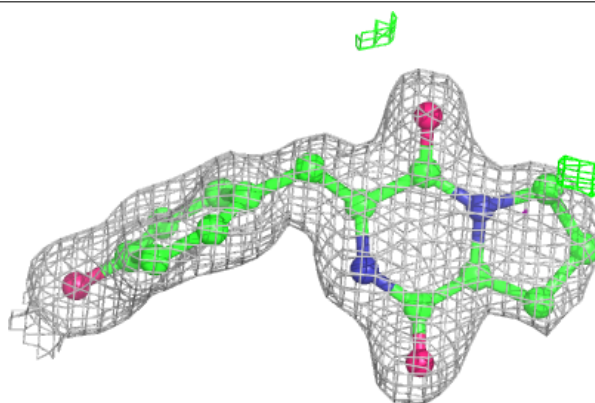


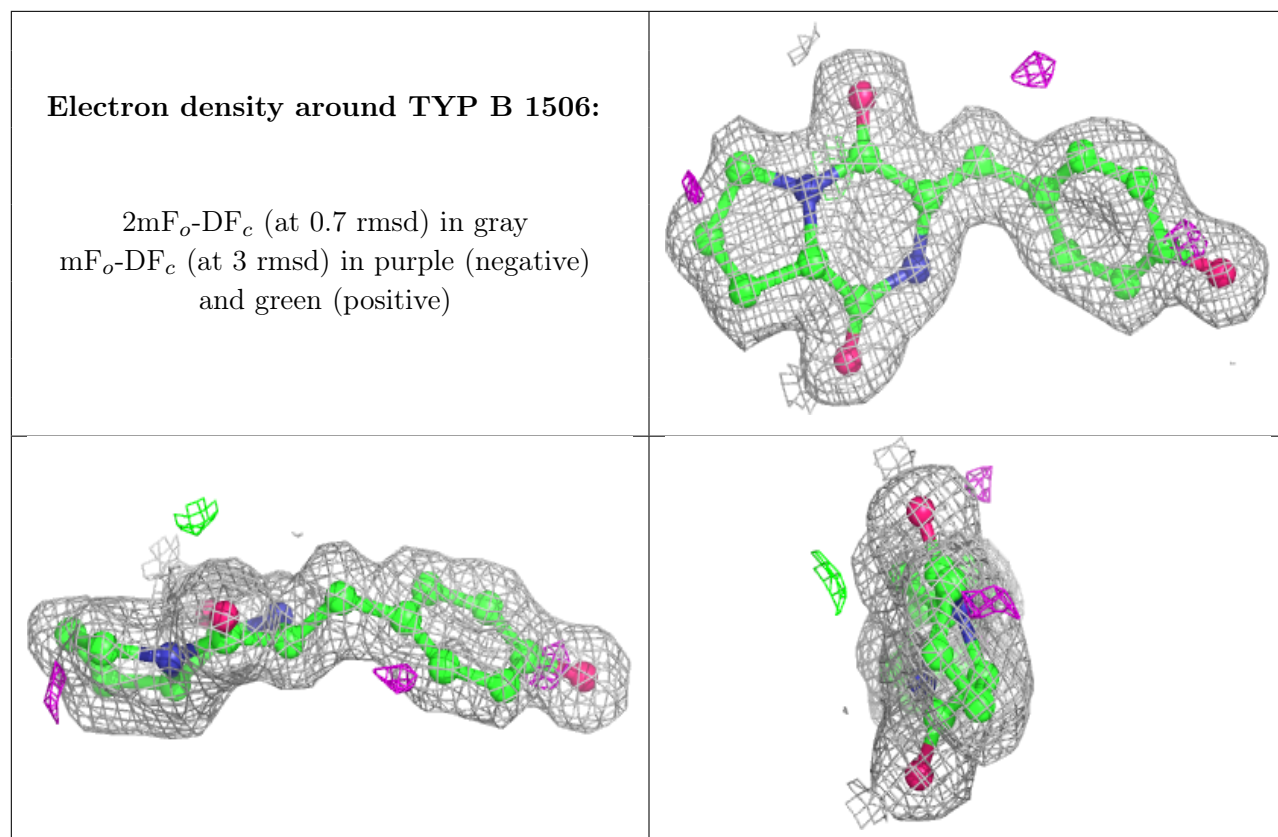
**Electron density around TYP B 1509:**

$2mF_o-DF_c$  (at 0.7 rmsd) in gray  
 $mF_o-DF_c$  (at 3 rmsd) in purple (negative)  
and green (positive)

**Electron density around TYP B 1507:**

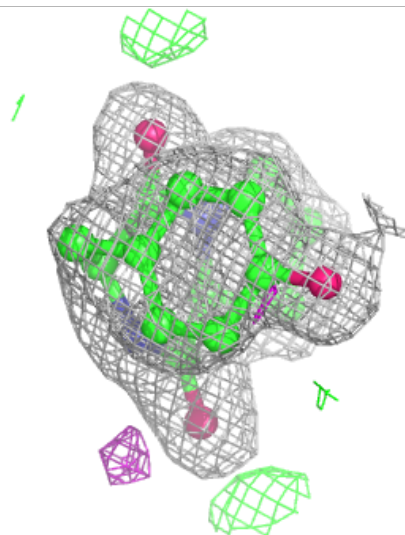
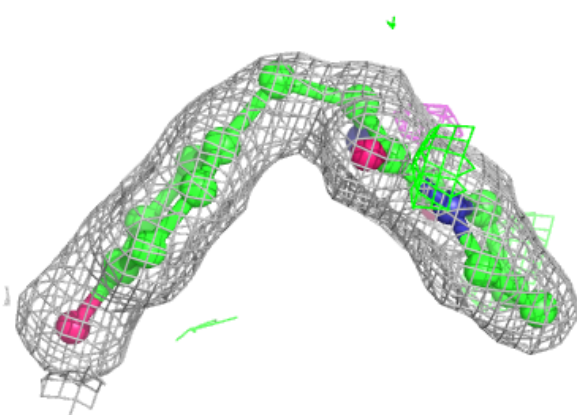
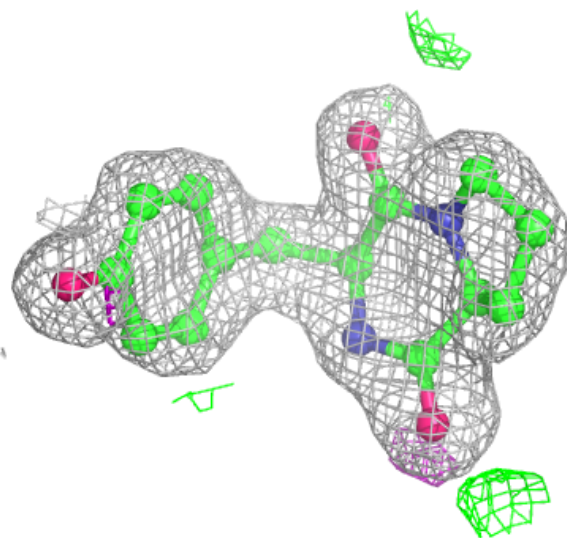
$2mF_o-DF_c$  (at 0.7 rmsd) in gray  
 $mF_o-DF_c$  (at 3 rmsd) in purple (negative)  
and green (positive)



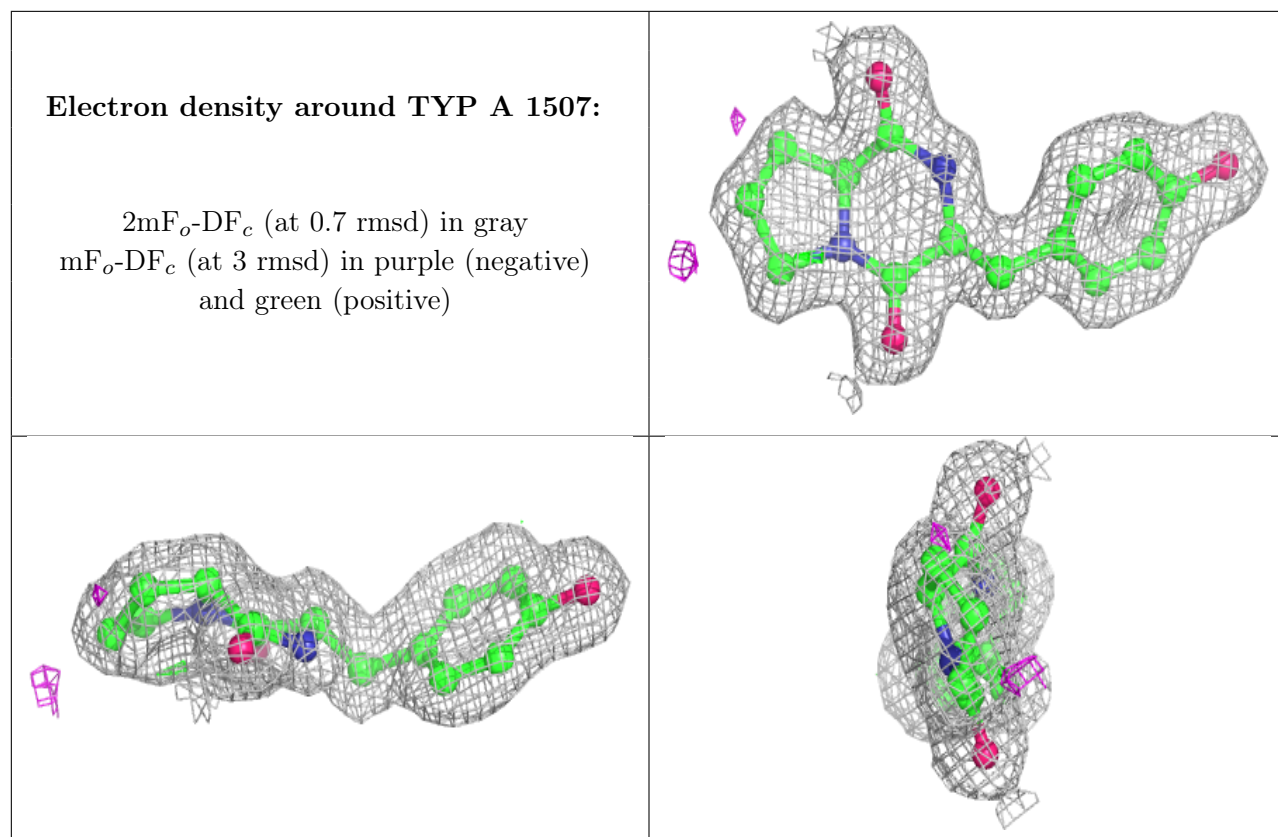


**Electron density around TYP B 1508:**

$2mF_o-DF_c$  (at 0.7 rmsd) in gray  
 $mF_o-DF_c$  (at 3 rmsd) in purple (negative)  
and green (positive)







## 6.5 Other polymers [i](#)

There are no such residues in this entry.