



Full wwPDB X-ray Structure Validation Report ⓘ

Dec 3, 2023 – 11:11 pm GMT

PDB ID : 2VZM
Title : Crystal structure of the narbomycin-bound PikC D50N mutant
Authors : Li, S.; Sherman, D.H.; Podust, L.M.
Deposited on : 2008-08-01
Resolution : 1.85 Å(reported)

This is a Full wwPDB X-ray Structure Validation Report for a publicly released PDB entry.

We welcome your comments at validation@mail.wwpdb.org

A user guide is available at

<https://www.wwpdb.org/validation/2017/XrayValidationReportHelp>

with specific help available everywhere you see the ⓘ symbol.

The types of validation reports are described at

<http://www.wwpdb.org/validation/2017/FAQs#types>.

The following versions of software and data (see [references ⓘ](#)) were used in the production of this report:

MolProbity : 4.02b-467
Mogul : 1.8.4, CSD as541be (2020)
Xtriage (Phenix) : 1.13
EDS : 2.36
buster-report : 1.1.7 (2018)
Percentile statistics : 20191225.v01 (using entries in the PDB archive December 25th 2019)
Refmac : 5.8.0158
CCP4 : 7.0.044 (Gargrove)
Ideal geometry (proteins) : Engh & Huber (2001)
Ideal geometry (DNA, RNA) : Parkinson et al. (1996)
Validation Pipeline (wwPDB-VP) : 2.36

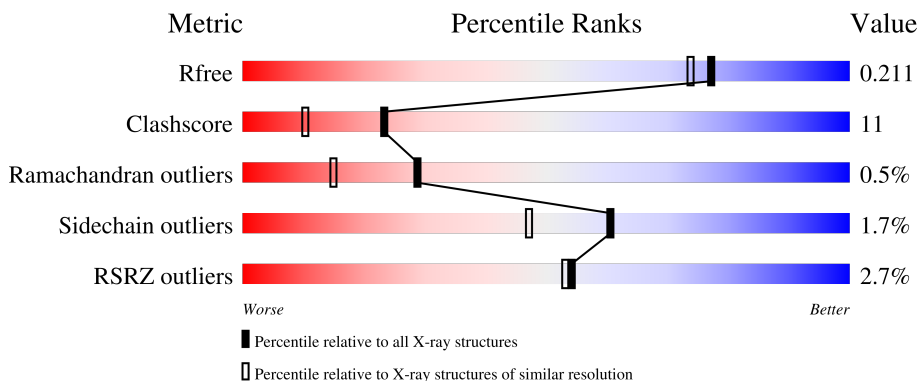
1 Overall quality at a glance

The following experimental techniques were used to determine the structure:

X-RAY DIFFRACTION

The reported resolution of this entry is 1.85 Å.

Percentile scores (ranging between 0-100) for global validation metrics of the entry are shown in the following graphic. The table shows the number of entries on which the scores are based.



Metric	Whole archive (#Entries)	Similar resolution (#Entries, resolution range(Å))
R_{free}	130704	2469 (1.86-1.86)
Clashscore	141614	2625 (1.86-1.86)
Ramachandran outliers	138981	2592 (1.86-1.86)
Sidechain outliers	138945	2592 (1.86-1.86)
RSRZ outliers	127900	2436 (1.86-1.86)

The table below summarises the geometric issues observed across the polymeric chains and their fit to the electron density. The red, orange, yellow and green segments of the lower bar indicate the fraction of residues that contain outliers for ≥ 3 , 2, 1 and 0 types of geometric quality criteria respectively. A grey segment represents the fraction of residues that are not modelled. The numeric value for each fraction is indicated below the corresponding segment, with a dot representing fractions $\leq 5\%$. The upper red bar (where present) indicates the fraction of residues that have poor fit to the electron density. The numeric value is given above the bar.

Mol	Chain	Length	Quality of chain
1	A	436	 2% 79% 10% • 9%
1	B	436	 3% 79% 10% • 10%

The following table lists non-polymeric compounds, carbohydrate monomers and non-standard residues in protein, DNA, RNA chains that are outliers for geometric or electron-density-fit criteria:

Mol	Type	Chain	Res	Chirality	Geometry	Clashes	Electron density
3	NRB	A	1408[A]	X	-	-	-
3	NRB	A	1408[B]	X	-	-	-
3	NRB	B	1408	X	-	-	-

2 Entry composition [i](#)

There are 4 unique types of molecules in this entry. The entry contains 7068 atoms, of which 0 are hydrogens and 0 are deuteriums.

In the tables below, the ZeroOcc column contains the number of atoms modelled with zero occupancy, the AltConf column contains the number of residues with at least one atom in alternate conformation and the Trace column contains the number of residues modelled with at most 2 atoms.

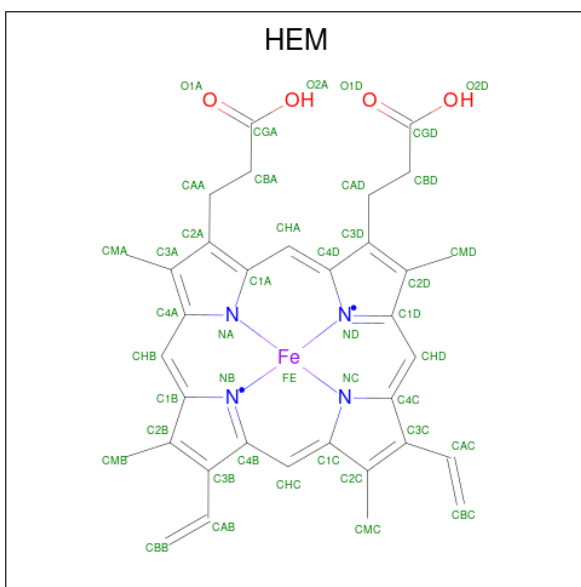
- Molecule 1 is a protein called CYTOCHROME P450 MONOOXYGENASE.

Mol	Chain	Residues	Atoms					ZeroOcc	AltConf	Trace
			Total	C	N	O	S			
1	A	395	Total 3136	C 1984	N 560	O 578	S 14	0	11	0
1	B	394	Total 3097	C 1963	N 550	O 569	S 15	0	7	0

There are 2 discrepancies between the modelled and reference sequences:

Chain	Residue	Modelled	Actual	Comment	Reference
A	50	ASN	ASP	engineered mutation	UNP O87605
B	50	ASN	ASP	engineered mutation	UNP O87605

- Molecule 2 is PROTOPORPHYRIN IX CONTAINING FE (three-letter code: HEM) (formula: $C_{34}H_{32}FeN_4O_4$).



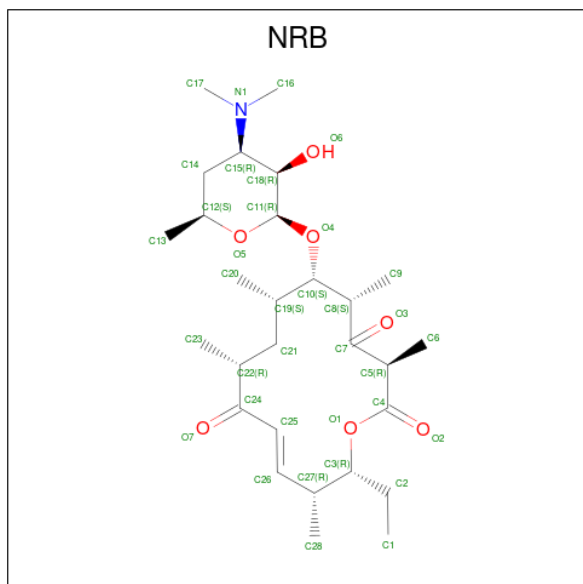
Mol	Chain	Residues	Atoms					ZeroOcc	AltConf
			Total	C	Fe	N	O		
2	A	1	Total 43	C 34	Fe 1	N 4	O 4	0	0

Continued on next page...

Continued from previous page...

Mol	Chain	Residues	Atoms				ZeroOcc	AltConf	
			Total	C	Fe	N			O
2	B	1	43	34	1	4	4	0	0

- Molecule 3 is NARBOMYCIN (three-letter code: NRB) (formula: $C_{28}H_{47}NO_7$).



Mol	Chain	Residues	Atoms				ZeroOcc	AltConf
			Total	C	N	O		
3	A	1	72	56	2	14	0	1
3	B	1	36	28	1	7	0	0

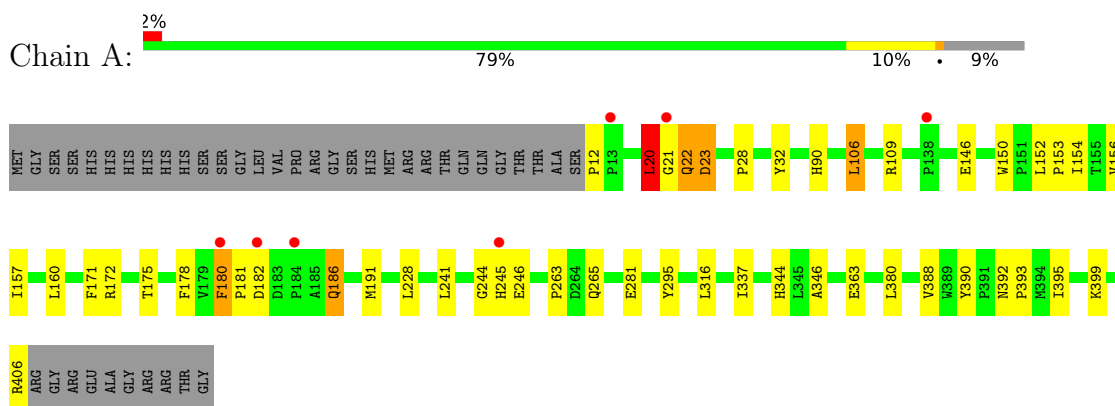
- Molecule 4 is water.

Mol	Chain	Residues	Atoms	ZeroOcc	AltConf
4	A	323	Total O 323 323	0	0
4	B	318	Total O 318 318	0	0

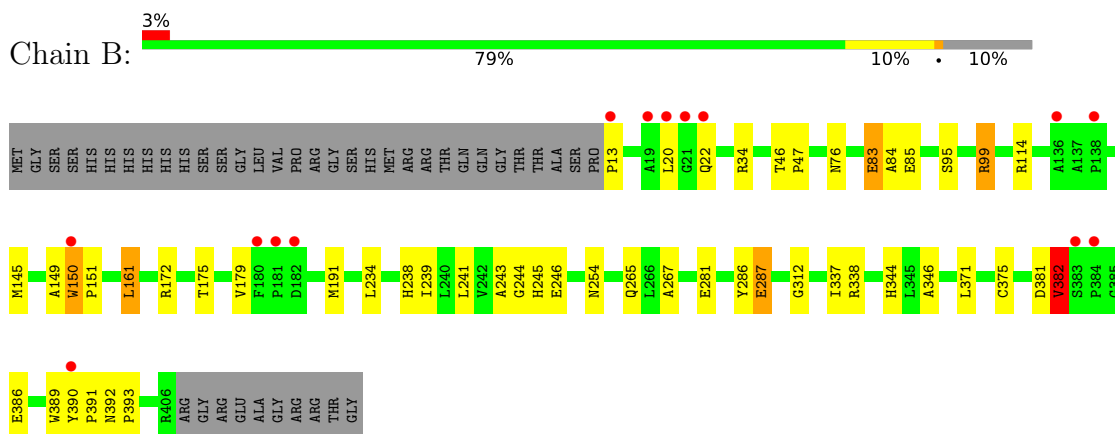
3 Residue-property plots [i](#)

These plots are drawn for all protein, RNA, DNA and oligosaccharide chains in the entry. The first graphic for a chain summarises the proportions of the various outlier classes displayed in the second graphic. The second graphic shows the sequence view annotated by issues in geometry and electron density. Residues are color-coded according to the number of geometric quality criteria for which they contain at least one outlier: green = 0, yellow = 1, orange = 2 and red = 3 or more. A red dot above a residue indicates a poor fit to the electron density ($RSRZ > 2$). Stretches of 2 or more consecutive residues without any outlier are shown as a green connector. Residues present in the sample, but not in the model, are shown in grey.

- Molecule 1: CYTOCHROME P450 MONOOXYGENASE



- Molecule 1: CYTOCHROME P450 MONOOXYGENASE



4 Data and refinement statistics

Property	Value	Source
Space group	P 21 21 21	Depositor
Cell constants a, b, c, α , β , γ	60.36Å 109.49Å 153.10Å 90.00° 90.00° 90.00°	Depositor
Resolution (Å)	89.09 – 1.85 44.53 – 1.85	Depositor EDS
% Data completeness (in resolution range)	98.7 (89.09-1.85) 98.6 (44.53-1.85)	Depositor EDS
R_{merge}	0.01	Depositor
R_{sym}	(Not available)	Depositor
$\langle I/\sigma(I) \rangle$ ¹	3.43 (at 1.86Å)	Xtrriage
Refinement program	REFMAC 5.4.0067	Depositor
R, R_{free}	0.165 , 0.211 0.167 , 0.211	Depositor DCC
R_{free} test set	8633 reflections (10.03%)	wwPDB-VP
Wilson B-factor (Å ²)	21.2	Xtrriage
Anisotropy	0.457	Xtrriage
Bulk solvent k_{sol} (e/Å ³), B_{sol} (Å ²)	0.36 , 47.7	EDS
L-test for twinning ²	$\langle L \rangle = 0.49$, $\langle L^2 \rangle = 0.32$	Xtrriage
Estimated twinning fraction	No twinning to report.	Xtrriage
F_o, F_c correlation	0.96	EDS
Total number of atoms	7068	wwPDB-VP
Average B, all atoms (Å ²)	24.0	wwPDB-VP

Xtrriage's analysis on translational NCS is as follows: *The largest off-origin peak in the Patterson function is 11.97% of the height of the origin peak. No significant pseudotranslation is detected.*

¹ Intensities estimated from amplitudes.

² Theoretical values of $\langle |L| \rangle$, $\langle L^2 \rangle$ for acentric reflections are 0.5, 0.333 respectively for untwinned datasets, and 0.375, 0.2 for perfectly twinned datasets.

5 Model quality [i](#)

5.1 Standard geometry [i](#)

Bond lengths and bond angles in the following residue types are not validated in this section: NRB, HEM

The Z score for a bond length (or angle) is the number of standard deviations the observed value is removed from the expected value. A bond length (or angle) with $|Z| > 5$ is considered an outlier worth inspection. RMSZ is the root-mean-square of all Z scores of the bond lengths (or angles).

Mol	Chain	Bond lengths		Bond angles	
		RMSZ	# Z >5	RMSZ	# Z >5
1	A	0.75	0/3227	0.77	3/4403 (0.1%)
1	B	0.74	0/3182	0.73	3/4344 (0.1%)
All	All	0.75	0/6409	0.75	6/8747 (0.1%)

Chiral center outliers are detected by calculating the chiral volume of a chiral center and verifying if the center is modelled as a planar moiety or with the opposite hand. A planarity outlier is detected by checking planarity of atoms in a peptide group, atoms in a mainchain group or atoms of a sidechain that are expected to be planar.

Mol	Chain	#Chirality outliers	#Planarity outliers
1	A	0	2

There are no bond length outliers.

All (6) bond angle outliers are listed below:

Mol	Chain	Res	Type	Atoms	Z	Observed($^{\circ}$)	Ideal($^{\circ}$)
1	A	181	PRO	N-CA-C	-8.24	90.67	112.10
1	B	99	ARG	NE-CZ-NH2	-7.39	116.61	120.30
1	B	99	ARG	NE-CZ-NH1	7.08	123.84	120.30
1	B	13	PRO	N-CA-CB	5.92	110.40	103.30
1	A	12	PRO	N-CA-CB	5.37	109.75	103.30
1	A	180	PHE	N-CA-C	5.04	124.60	111.00

There are no chirality outliers.

All (2) planarity outliers are listed below:

Mol	Chain	Res	Type	Group
1	A	180	PHE	Peptide
1	A	20	LEU	Peptide

5.2 Too-close contacts [i](#)

In the following table, the Non-H and H(model) columns list the number of non-hydrogen atoms and hydrogen atoms in the chain respectively. The H(added) column lists the number of hydrogen atoms added and optimized by MolProbity. The Clashes column lists the number of clashes within the asymmetric unit, whereas Symm-Clashes lists symmetry-related clashes.

Mol	Chain	Non-H	H(model)	H(added)	Clashes	Symm-Clashes
1	A	3136	0	3118	68	0
1	B	3097	0	3069	56	0
2	A	43	0	30	1	0
2	B	43	0	30	2	0
3	A	72	0	89	26	0
3	B	36	0	47	18	0
4	A	323	0	0	10	0
4	B	318	0	0	2	0
All	All	7068	0	6383	145	0

The all-atom clashscore is defined as the number of clashes found per 1000 atoms (including hydrogen atoms). The all-atom clashscore for this structure is 11.

All (145) close contacts within the same asymmetric unit are listed below, sorted by their clash magnitude.

Atom-1	Atom-2	Interatomic distance (Å)	Clash overlap (Å)
1:A:22:GLN:CB	1:A:23:ASP:HB2	1.57	1.34
1:B:150[B]:TRP:CH2	1:B:245:HIS:CE1	2.27	1.22
1:A:191[A]:MET:HE2	3:A:1408[A]:NRB:C13	1.77	1.13
3:B:1408:NRB:H11	3:B:1408:NRB:H9C2	1.13	1.11
3:A:1408[B]:NRB:H10	3:A:1408[B]:NRB:H6C3	1.33	1.11
1:A:191[A]:MET:HE2	3:A:1408[A]:NRB:H131	1.22	1.11
3:A:1408[B]:NRB:H9C1	3:A:1408[B]:NRB:C20	1.82	1.08
3:A:1408[B]:NRB:H202	3:A:1408[B]:NRB:C9	1.83	1.07
3:A:1408[B]:NRB:H9C2	3:A:1408[B]:NRB:C4	1.84	1.06
3:B:1408:NRB:H11	3:B:1408:NRB:C9	1.72	1.05
1:A:20:LEU:HB3	1:A:21:GLY:CA	1.86	1.04
1:A:171:PHE:O	1:A:175:THR:HG23	1.57	1.03
1:B:239:ILE:CD1	3:B:1408:NRB:H6C1	1.87	1.03
3:A:1408[B]:NRB:H9C2	3:A:1408[B]:NRB:O1	1.62	0.98
1:A:20:LEU:CB	1:A:21:GLY:HA3	1.93	0.97
1:A:150:TRP:HE3	4:A:2235:HOH:O	1.45	0.97
1:A:20:LEU:HB3	1:A:21:GLY:HA3	0.99	0.96
1:B:150[B]:TRP:CH2	1:B:245:HIS:HE1	1.75	0.96
1:B:150[B]:TRP:HH2	1:B:245:HIS:HE1	1.11	0.95

Continued on next page...

Continued from previous page...

Atom-1	Atom-2	Interatomic distance (Å)	Clash overlap (Å)
1:B:239:ILE:HD11	3:B:1408:NRB:H6C1	1.46	0.95
3:A:1408[B]:NRB:H9C1	3:A:1408[B]:NRB:H202	0.93	0.89
1:A:154:ILE:HD12	1:A:245[B]:HIS:NE2	1.87	0.89
1:A:191[A]:MET:CE	3:A:1408[A]:NRB:H131	2.02	0.87
3:B:1408:NRB:H9C3	3:B:1408:NRB:H6C3	1.58	0.86
3:A:1408[B]:NRB:C9	3:A:1408[B]:NRB:O1	2.23	0.85
1:B:191[B]:MET:SD	3:B:1408:NRB:C13	2.67	0.83
1:A:154:ILE:HD12	1:A:245[B]:HIS:CE1	2.13	0.82
3:B:1408:NRB:C9	3:B:1408:NRB:C11	2.57	0.82
2:B:1407:HEM:HHD	2:B:1407:HEM:HBC2	1.61	0.81
3:A:1408[B]:NRB:C9	3:A:1408[B]:NRB:C4	2.57	0.81
1:B:239:ILE:HD12	3:B:1408:NRB:H6C1	1.61	0.80
1:B:150[B]:TRP:CZ2	1:B:172:ARG:HB2	2.17	0.80
1:A:191[B]:MET:HE1	3:A:1408[B]:NRB:H141	1.64	0.80
1:B:150[B]:TRP:CH2	1:B:245:HIS:NE2	2.50	0.80
1:B:150[B]:TRP:CH2	1:B:172:ARG:HA	2.18	0.79
1:A:22:GLN:CB	1:A:23:ASP:CB	2.52	0.78
1:A:344:HIS:HD2	1:A:346:ALA:H	1.32	0.78
1:B:191[B]:MET:SD	3:B:1408:NRB:H133	2.25	0.77
1:A:175:THR:HG21	1:A:245[A]:HIS:HD2	1.49	0.76
1:B:150[B]:TRP:CZ3	1:B:245:HIS:CE1	2.74	0.75
1:A:191[B]:MET:CE	3:A:1408[B]:NRB:C14	2.65	0.75
1:B:191[B]:MET:SD	3:B:1408:NRB:H131	2.27	0.75
1:A:21:GLY:CA	1:A:22:GLN:CB	2.64	0.74
1:B:344:HIS:HD2	1:B:346:ALA:H	1.31	0.74
1:B:254:ASN:HB3	1:B:287[A]:GLU:HG2	1.69	0.73
1:B:338:ARG:HD3	4:B:2282:HOH:O	1.88	0.72
3:B:1408:NRB:H9C3	3:B:1408:NRB:C6	2.19	0.72
3:A:1408[B]:NRB:H10	3:A:1408[B]:NRB:C6	2.13	0.71
1:B:85:GLU:HA	1:B:191[B]:MET:HE1	1.71	0.71
1:A:21:GLY:HA2	1:A:22:GLN:CB	2.21	0.71
1:A:109:ARG:HG2	4:A:2108:HOH:O	1.91	0.71
1:A:175:THR:HG21	1:A:245[A]:HIS:CD2	2.26	0.71
1:B:150[B]:TRP:CZ3	1:B:245:HIS:NE2	2.59	0.71
3:B:1408:NRB:H9C2	3:B:1408:NRB:C11	2.08	0.69
1:B:95:SER:OG	1:B:99:ARG:HD2	1.93	0.69
1:A:191[B]:MET:HE2	3:A:1408[B]:NRB:C14	2.24	0.67
1:A:21:GLY:H	1:A:22:GLN:CB	2.06	0.67
1:A:157:ILE:HG21	1:A:245[B]:HIS:CE1	2.30	0.66
1:A:406:ARG:CB	4:A:2301:HOH:O	2.44	0.65
1:B:85:GLU:HA	1:B:191[B]:MET:CE	2.27	0.65

Continued on next page...

Continued from previous page...

Atom-1	Atom-2	Interatomic distance (Å)	Clash overlap (Å)
3:B:1408:NRB:O2	3:B:1408:NRB:H8	1.97	0.65
1:A:156[B]:VAL:HG21	1:A:363:GLU:OE2	1.98	0.63
1:A:21:GLY:N	1:A:22:GLN:CB	2.63	0.62
1:A:191[A]:MET:CE	3:A:1408[A]:NRB:C13	2.66	0.61
1:A:146:GLU:OE2	1:A:172:ARG:NH2	2.32	0.61
1:B:83:GLU:HG3	1:B:84:ALA:N	2.14	0.61
1:A:157:ILE:CG2	1:A:245[B]:HIS:CE1	2.84	0.61
1:A:152:LEU:HB3	1:A:153:PRO:HD3	1.82	0.59
1:B:161[A]:LEU:HD23	1:B:241:LEU:HG	1.83	0.59
1:B:239:ILE:HD12	3:B:1408:NRB:C6	2.32	0.59
3:B:1408:NRB:C9	3:B:1408:NRB:H6C3	2.25	0.59
1:A:245[A]:HIS:CD2	4:A:2236:HOH:O	2.55	0.59
1:A:150:TRP:HZ2	4:A:2154:HOH:O	1.85	0.58
1:B:265:GLN:NE2	1:B:337:ILE:H	2.01	0.58
3:A:1408[B]:NRB:O6	3:A:1408[B]:NRB:H163	2.03	0.58
1:A:191[B]:MET:HE2	3:A:1408[B]:NRB:H142	1.85	0.58
1:A:191[B]:MET:CE	3:A:1408[B]:NRB:H141	2.29	0.56
3:A:1408[B]:NRB:C20	3:A:1408[B]:NRB:C9	2.58	0.56
1:A:178:PHE:CE1	1:A:191[B]:MET:HG2	2.41	0.56
1:B:34:ARG:HH11	1:B:34:ARG:HG2	1.70	0.56
1:B:243:ALA:HB2	3:B:1408:NRB:H6C2	1.88	0.55
1:B:150[B]:TRP:CZ2	1:B:172:ARG:CB	2.88	0.55
1:B:22:GLN:HE22	1:B:389:TRP:H	1.54	0.55
1:B:245:HIS:CD2	4:B:2140:HOH:O	2.60	0.53
1:A:265:GLN:NE2	1:A:337:ILE:H	2.05	0.53
1:A:157:ILE:CG2	1:A:245[B]:HIS:HE1	2.23	0.52
1:B:161[A]:LEU:CD2	1:B:241:LEU:HG	2.40	0.52
1:B:281:GLU:OE1	1:B:344:HIS:HE1	1.93	0.52
3:A:1408[A]:NRB:O6	3:A:1408[A]:NRB:H172	2.10	0.52
1:A:150:TRP:CH2	1:A:246:GLU:OE2	2.64	0.51
1:B:239:ILE:CD1	3:B:1408:NRB:C6	2.77	0.51
1:B:244:GLY:HA3	2:B:1407:HEM:C2C	2.45	0.51
1:A:154:ILE:HD12	1:A:245[B]:HIS:HE2	1.70	0.51
1:A:281:GLU:OE1	1:A:344:HIS:HE1	1.93	0.50
1:A:388:VAL:HG13	1:A:399:LYS:HB2	1.94	0.50
1:A:241:LEU:O	1:A:245[B]:HIS:CD2	2.65	0.49
1:B:381:ASP:O	1:B:382:VAL:HB	2.11	0.49
1:B:175:THR:HG22	1:B:246:GLU:OE2	2.13	0.49
1:B:150[B]:TRP:HH2	1:B:245:HIS:CE1	1.89	0.49
1:A:295:TYR:CD1	1:A:316:LEU:HD21	2.48	0.48
1:B:382:VAL:HG22	1:B:386:GLU:CB	2.44	0.48

Continued on next page...

Continued from previous page...

Atom-1	Atom-2	Interatomic distance (Å)	Clash overlap (Å)
1:B:179:VAL:HG21	1:B:246:GLU:HG3	1.96	0.48
1:A:191[A]:MET:HE2	3:A:1408[A]:NRB:C12	2.41	0.47
1:A:395:ILE:HD11	3:A:1408[B]:NRB:C26	2.44	0.47
1:A:150:TRP:CZ2	4:A:2154:HOH:O	2.55	0.47
1:B:114:ARG:HB3	1:B:114:ARG:CZ	2.44	0.47
1:B:286:TYR:HD2	1:B:287[A]:GLU:OE1	1.98	0.47
1:A:191[A]:MET:HE2	3:A:1408[A]:NRB:H132	1.87	0.47
1:B:85:GLU:CG	1:B:191[B]:MET:HE1	2.46	0.46
1:A:265:GLN:HE21	1:A:337:ILE:H	1.64	0.46
1:A:156[B]:VAL:HG21	1:A:363:GLU:CD	2.36	0.46
1:A:157:ILE:HG22	1:A:245[B]:HIS:HE1	1.81	0.45
1:A:90:HIS:HD2	4:A:2229:HOH:O	1.99	0.45
1:B:390:TYR:HA	1:B:391:PRO:HD3	1.74	0.45
3:A:1408[B]:NRB:O1	3:A:1408[B]:NRB:H9C3	2.14	0.45
1:A:182:ASP:H	1:A:186:GLN:CD	2.20	0.45
1:A:295:TYR:CE1	1:A:316:LEU:HD21	2.51	0.45
1:A:154:ILE:HA	1:A:245[B]:HIS:CE1	2.52	0.44
1:A:244:GLY:HA3	2:A:1407:HEM:C2C	2.52	0.44
1:A:263:PRO:HB3	1:B:267:ALA:HB2	1.98	0.44
1:B:150[B]:TRP:CH2	1:B:172:ARG:CA	2.95	0.44
1:B:150[B]:TRP:HB3	1:B:151:PRO:HD3	1.98	0.44
1:A:156[B]:VAL:HG23	4:A:2294:HOH:O	2.17	0.44
1:A:191[A]:MET:CE	3:A:1408[A]:NRB:C12	2.95	0.44
1:A:154:ILE:HA	1:A:245[B]:HIS:HE1	1.82	0.44
1:B:145[A]:MET:HA	1:B:149:ALA:HB3	1.99	0.44
1:B:175:THR:CG2	1:B:246:GLU:HG2	2.48	0.43
1:A:392:ASN:HA	1:A:393:PRO:HD3	1.92	0.43
1:B:371:LEU:O	1:B:375:CYS:HB2	2.18	0.43
1:A:20:LEU:CB	1:A:21:GLY:CA	2.69	0.43
1:A:90:HIS:HE1	4:A:2084:HOH:O	2.02	0.42
1:B:34:ARG:HG2	1:B:34:ARG:NH1	2.35	0.42
1:A:160[B]:LEU:HD12	4:A:2160:HOH:O	2.20	0.41
1:A:390:TYR:CE2	1:A:399:LYS:HE3	2.55	0.41
1:B:85:GLU:HG3	1:B:191[B]:MET:CE	2.49	0.41
1:B:238:HIS:CE1	3:B:1408:NRB:H12	2.55	0.41
1:B:179:VAL:CG2	1:B:246:GLU:HG3	2.50	0.41
1:A:150:TRP:CZ3	1:A:172:ARG:HG3	2.55	0.41
1:A:28:PRO:HB2	1:A:32:TYR:CE1	2.56	0.41
1:A:106:LEU:HD23	1:A:228:LEU:HD13	2.02	0.41
1:B:46:THR:HB	1:B:47:PRO:HD2	2.03	0.41
1:B:265:GLN:NE2	1:B:337:ILE:HG12	2.36	0.41

Continued on next page...

Continued from previous page...

Atom-1	Atom-2	Interatomic distance (Å)	Clash overlap (Å)
1:B:392:ASN:HD22	1:B:393:PRO:HD2	1.85	0.41
1:A:152:LEU:O	1:A:156[B]:VAL:HG22	2.21	0.40
1:B:76:ASN:O	1:B:312:GLY:HA2	2.21	0.40

There are no symmetry-related clashes.

5.3 Torsion angles [i](#)

5.3.1 Protein backbone [i](#)

In the following table, the Percentiles column shows the percent Ramachandran outliers of the chain as a percentile score with respect to all X-ray entries followed by that with respect to entries of similar resolution.

The Analysed column shows the number of residues for which the backbone conformation was analysed, and the total number of residues.

Mol	Chain	Analysed	Favoured	Allowed	Outliers	Percentiles	
1	A	404/436 (93%)	392 (97%)	9 (2%)	3 (1%)	22	9
1	B	399/436 (92%)	384 (96%)	14 (4%)	1 (0%)	41	26
All	All	803/872 (92%)	776 (97%)	23 (3%)	4 (0%)	29	15

All (4) Ramachandran outliers are listed below:

Mol	Chain	Res	Type
1	A	22	GLN
1	A	20	LEU
1	A	23	ASP
1	B	382	VAL

5.3.2 Protein sidechains [i](#)

In the following table, the Percentiles column shows the percent sidechain outliers of the chain as a percentile score with respect to all X-ray entries followed by that with respect to entries of similar resolution.

The Analysed column shows the number of residues for which the sidechain conformation was analysed, and the total number of residues.

Mol	Chain	Analysed	Rotameric	Outliers	Percentiles	
1	A	330/355 (93%)	326 (99%)	4 (1%)	71	62
1	B	323/355 (91%)	313 (97%)	10 (3%)	40	23
All	All	653/710 (92%)	639 (98%)	14 (2%)	60	38

All (14) residues with a non-rotameric sidechain are listed below:

Mol	Chain	Res	Type
1	A	20	LEU
1	A	106	LEU
1	A	186	GLN
1	A	380	LEU
1	B	20	LEU
1	B	83	GLU
1	B	150[A]	TRP
1	B	150[B]	TRP
1	B	161[A]	LEU
1	B	161[B]	LEU
1	B	234	LEU
1	B	287[A]	GLU
1	B	287[B]	GLU
1	B	382	VAL

Sometimes sidechains can be flipped to improve hydrogen bonding and reduce clashes. All (12) such sidechains are listed below:

Mol	Chain	Res	Type
1	A	90	HIS
1	A	188	GLN
1	A	208	GLN
1	A	238	HIS
1	A	265	GLN
1	A	344	HIS
1	B	22	GLN
1	B	186	GLN
1	B	188	GLN
1	B	208	GLN
1	B	265	GLN
1	B	344	HIS

5.3.3 RNA

There are no RNA molecules in this entry.

5.4 Non-standard residues in protein, DNA, RNA chains [i](#)

There are no non-standard protein/DNA/RNA residues in this entry.

5.5 Carbohydrates [i](#)

There are no monosaccharides in this entry.

5.6 Ligand geometry [i](#)

5 ligands are modelled in this entry.

In the following table, the Counts columns list the number of bonds (or angles) for which Mogul statistics could be retrieved, the number of bonds (or angles) that are observed in the model and the number of bonds (or angles) that are defined in the Chemical Component Dictionary. The Link column lists molecule types, if any, to which the group is linked. The Z score for a bond length (or angle) is the number of standard deviations the observed value is removed from the expected value. A bond length (or angle) with $|Z| > 2$ is considered an outlier worth inspection. RMSZ is the root-mean-square of all Z scores of the bond lengths (or angles).

Mol	Type	Chain	Res	Link	Bond lengths			Bond angles		
					Counts	RMSZ	# Z > 2	Counts	RMSZ	# Z > 2
2	HEM	B	1407	1	41,50,50	2.05	11 (26%)	45,82,82	1.92	12 (26%)
2	HEM	A	1407	1	41,50,50	1.99	10 (24%)	45,82,82	1.97	13 (28%)
3	NRB	A	1408[B]	1	37,37,37	1.18	3 (8%)	44,53,53	2.51	11 (25%)
3	NRB	A	1408[A]	-	37,37,37	1.03	1 (2%)	44,53,53	2.20	12 (27%)
3	NRB	B	1408	-	37,37,37	1.35	5 (13%)	44,53,53	2.60	10 (22%)

In the following table, the Chirals column lists the number of chiral outliers, the number of chiral centers analysed, the number of these observed in the model and the number defined in the Chemical Component Dictionary. Similar counts are reported in the Torsion and Rings columns. '-' means no outliers of that kind were identified.

Mol	Type	Chain	Res	Link	Chirals	Torsions	Rings
2	HEM	B	1407	1	-	0/12/54/54	-
2	HEM	A	1407	1	-	2/12/54/54	-
3	NRB	A	1408[B]	1	3/3/15/17	17/51/67/67	0/1/2/2
3	NRB	A	1408[A]	-	3/3/15/17	11/51/67/67	0/1/2/2
3	NRB	B	1408	-	3/3/15/17	13/51/67/67	0/1/2/2

All (30) bond length outliers are listed below:

Mol	Chain	Res	Type	Atoms	Z	Observed(Å)	Ideal(Å)
2	B	1407	HEM	C3D-C2D	8.07	1.53	1.36
2	A	1407	HEM	C3D-C2D	7.41	1.52	1.36
3	A	1408[A]	NRB	O1-C4	5.10	1.46	1.34
2	B	1407	HEM	C3C-C2C	-5.06	1.33	1.40
3	A	1408[B]	NRB	O1-C4	4.89	1.45	1.34
3	B	1408	NRB	C5-C7	-4.75	1.46	1.52
2	A	1407	HEM	C3C-CAC	3.97	1.55	1.47
3	B	1408	NRB	O1-C4	3.71	1.42	1.34
2	B	1407	HEM	C3C-CAC	3.41	1.54	1.47
2	A	1407	HEM	FE-ND	2.90	2.11	1.96
2	B	1407	HEM	CAB-C3B	2.82	1.55	1.47
3	B	1408	NRB	O1-C3	-2.79	1.41	1.46
2	A	1407	HEM	CAB-C3B	2.68	1.54	1.47
2	A	1407	HEM	CMA-C3A	2.64	1.57	1.51
2	A	1407	HEM	C2C-C1C	2.60	1.48	1.42
2	A	1407	HEM	CMD-C2D	2.35	1.55	1.50
3	B	1408	NRB	C5-C4	-2.34	1.47	1.51
2	B	1407	HEM	FE-ND	2.33	2.08	1.96
3	B	1408	NRB	C8-C10	-2.28	1.49	1.55
2	B	1407	HEM	FE-NB	2.21	2.07	1.96
3	A	1408[B]	NRB	C5-C7	-2.19	1.49	1.52
2	B	1407	HEM	CMA-C3A	2.15	1.56	1.51
2	B	1407	HEM	C1A-NA	2.15	1.40	1.36
2	A	1407	HEM	CMB-C2B	2.10	1.55	1.50
2	A	1407	HEM	CHB-C1B	2.07	1.40	1.35
2	B	1407	HEM	CHB-C1B	2.06	1.40	1.35
3	A	1408[B]	NRB	O1-C3	-2.05	1.42	1.46
2	B	1407	HEM	CAA-C2A	2.03	1.55	1.52
2	A	1407	HEM	FE-NB	2.01	2.06	1.96
2	B	1407	HEM	C2C-C1C	2.01	1.47	1.42

All (58) bond angle outliers are listed below:

Mol	Chain	Res	Type	Atoms	Z	Observed(°)	Ideal(°)
3	B	1408	NRB	C11-O4-C10	-10.48	92.03	117.96
3	A	1408[B]	NRB	O1-C4-C5	9.12	120.15	110.88
3	A	1408[A]	NRB	O1-C4-C5	7.56	118.56	110.88
3	B	1408	NRB	C3-O1-C4	-7.27	106.98	117.89
3	A	1408[B]	NRB	C14-C15-C18	-6.46	100.67	109.97
2	B	1407	HEM	C4D-ND-C1D	6.11	111.39	105.07
2	A	1407	HEM	C4D-ND-C1D	5.90	111.16	105.07
3	A	1408[B]	NRB	C11-O5-C12	5.41	121.47	112.91
3	B	1408	NRB	O3-C7-C8	5.17	127.96	120.60

Continued on next page...

Continued from previous page...

Mol	Chain	Res	Type	Atoms	Z	Observed(°)	Ideal(°)
3	B	1408	NRB	C20-C19-C10	-4.95	103.04	111.15
3	A	1408[B]	NRB	C3-O1-C4	-4.92	110.51	117.89
3	A	1408[B]	NRB	O5-C12-C14	4.78	116.46	109.14
2	A	1407	HEM	C4B-CHC-C1C	4.55	128.57	122.56
2	A	1407	HEM	C4C-CHD-C1D	4.30	128.23	122.56
3	B	1408	NRB	O1-C4-C5	4.28	115.23	110.88
2	A	1407	HEM	C1B-NB-C4B	4.26	109.47	105.07
3	A	1408[B]	NRB	O4-C10-C8	-4.05	104.09	111.14
3	A	1408[A]	NRB	C9-C8-C7	3.98	115.00	108.08
3	A	1408[A]	NRB	O4-C10-C8	-3.96	104.25	111.14
2	B	1407	HEM	CMA-C3A-C4A	-3.70	122.77	128.46
3	A	1408[A]	NRB	O5-C12-C14	3.69	114.79	109.14
2	B	1407	HEM	C1B-NB-C4B	3.68	108.87	105.07
3	B	1408	NRB	C14-C15-C18	-3.59	104.80	109.97
2	B	1407	HEM	CHA-C4D-ND	3.59	128.81	124.38
2	B	1407	HEM	CHD-C1D-ND	3.55	128.28	124.43
3	A	1408[A]	NRB	C14-C15-N1	-3.43	105.97	115.67
2	B	1407	HEM	C4B-CHC-C1C	3.21	126.79	122.56
3	A	1408[A]	NRB	C6-C5-C7	-3.20	105.37	111.63
3	A	1408[B]	NRB	O1-C4-O2	-3.16	118.04	123.94
3	A	1408[A]	NRB	O1-C3-C2	3.16	111.97	106.92
3	A	1408[A]	NRB	O2-C4-C5	-3.10	120.69	124.77
2	B	1407	HEM	C3B-C2B-C1B	3.02	108.72	106.49
3	A	1408[A]	NRB	C14-C15-C18	-3.01	105.63	109.97
3	A	1408[A]	NRB	C23-C22-C24	-2.75	105.43	110.20
2	A	1407	HEM	CBD-CAD-C3D	-2.62	105.34	112.63
3	B	1408	NRB	C12-C14-C15	-2.60	105.91	110.46
2	A	1407	HEM	CMA-C3A-C4A	-2.56	124.53	128.46
3	B	1408	NRB	O4-C10-C8	-2.47	106.83	111.14
3	B	1408	NRB	O6-C18-C15	2.44	114.13	109.77
2	A	1407	HEM	CHA-C4D-ND	2.43	127.39	124.38
2	B	1407	HEM	CBD-CAD-C3D	-2.39	105.97	112.63
2	B	1407	HEM	C4C-CHD-C1D	2.38	125.70	122.56
2	A	1407	HEM	C1D-C2D-C3D	-2.28	104.56	106.96
2	A	1407	HEM	CBA-CAA-C2A	-2.28	108.72	112.62
2	B	1407	HEM	C2B-C1B-NB	-2.27	107.14	109.84
2	A	1407	HEM	C3B-C2B-C1B	2.26	108.17	106.49
3	A	1408[B]	NRB	C18-C15-N1	-2.26	104.30	110.83
3	A	1408[B]	NRB	O2-C4-C5	-2.25	121.81	124.77
3	A	1408[A]	NRB	C11-O5-C12	2.20	116.39	112.91
2	A	1407	HEM	CHD-C1D-ND	2.19	126.81	124.43
2	B	1407	HEM	C4A-C3A-C2A	2.16	108.50	107.00

Continued on next page...

Continued from previous page...

Mol	Chain	Res	Type	Atoms	Z	Observed(°)	Ideal(°)
3	B	1408	NRB	C10-C8-C7	2.14	117.06	110.39
3	A	1408[A]	NRB	C13-C12-C14	-2.11	110.09	113.40
2	A	1407	HEM	CMD-C2D-C1D	2.08	128.21	125.04
3	A	1408[B]	NRB	C14-C15-N1	-2.08	109.79	115.67
2	A	1407	HEM	CMC-C2C-C3C	2.06	128.53	124.68
3	A	1408[B]	NRB	O4-C11-C18	-2.03	102.84	108.10
2	B	1407	HEM	CMA-C3A-C2A	2.00	128.72	124.94

All (9) chirality outliers are listed below:

Mol	Chain	Res	Type	Atom
3	A	1408[A]	NRB	C15
3	A	1408[A]	NRB	C11
3	A	1408[A]	NRB	C12
3	A	1408[B]	NRB	C15
3	A	1408[B]	NRB	C11
3	A	1408[B]	NRB	C12
3	B	1408	NRB	C15
3	B	1408	NRB	C11
3	B	1408	NRB	C12

All (43) torsion outliers are listed below:

Mol	Chain	Res	Type	Atoms
3	A	1408[A]	NRB	C5-C7-C8-C9
3	A	1408[A]	NRB	O3-C7-C8-C9
3	A	1408[A]	NRB	C8-C10-C19-C20
3	A	1408[A]	NRB	O4-C10-C19-C20
3	A	1408[A]	NRB	O4-C10-C19-C21
3	A	1408[B]	NRB	O4-C10-C8-C9
3	A	1408[B]	NRB	C19-C10-C8-C9
3	A	1408[B]	NRB	C20-C19-C21-C22
3	A	1408[B]	NRB	C19-C21-C22-C23
3	B	1408	NRB	C5-C4-O1-C3
3	B	1408	NRB	O4-C10-C8-C7
3	B	1408	NRB	O4-C10-C8-C9
3	B	1408	NRB	C8-C10-C19-C20
3	B	1408	NRB	C8-C10-C19-C21
3	B	1408	NRB	O4-C10-C19-C20
3	B	1408	NRB	O4-C10-C19-C21
3	B	1408	NRB	O2-C4-O1-C3
3	A	1408[B]	NRB	C5-C4-O1-C3

Continued on next page...

Continued from previous page...

Mol	Chain	Res	Type	Atoms
3	A	1408[B]	NRB	O2-C4-O1-C3
3	A	1408[B]	NRB	O7-C24-C25-C26
3	A	1408[B]	NRB	C22-C24-C25-C26
3	B	1408	NRB	C18-C15-N1-C16
3	A	1408[A]	NRB	C8-C10-C19-C21
3	A	1408[A]	NRB	C19-C10-C8-C9
3	A	1408[B]	NRB	O3-C7-C8-C9
3	A	1408[B]	NRB	C19-C10-C8-C7
3	A	1408[A]	NRB	C18-C11-O4-C10
3	A	1408[A]	NRB	C14-C15-N1-C17
3	B	1408	NRB	O5-C11-O4-C10
3	A	1408[A]	NRB	C25-C26-C27-C28
3	A	1408[B]	NRB	C8-C10-C19-C20
3	B	1408	NRB	C19-C10-C8-C9
3	B	1408	NRB	C18-C11-O4-C10
3	B	1408	NRB	C25-C26-C27-C28
3	A	1408[B]	NRB	C18-C15-N1-C16
3	A	1408[B]	NRB	C19-C21-C22-C24
2	A	1407	HEM	CAA-CBA-CGA-O1A
3	A	1408[A]	NRB	O5-C11-O4-C10
3	A	1408[B]	NRB	C1-C2-C3-O1
3	A	1408[B]	NRB	C25-C26-C27-C28
2	A	1407	HEM	CAA-CBA-CGA-O2A
3	A	1408[B]	NRB	O4-C10-C19-C21
3	A	1408[B]	NRB	C5-C7-C8-C10

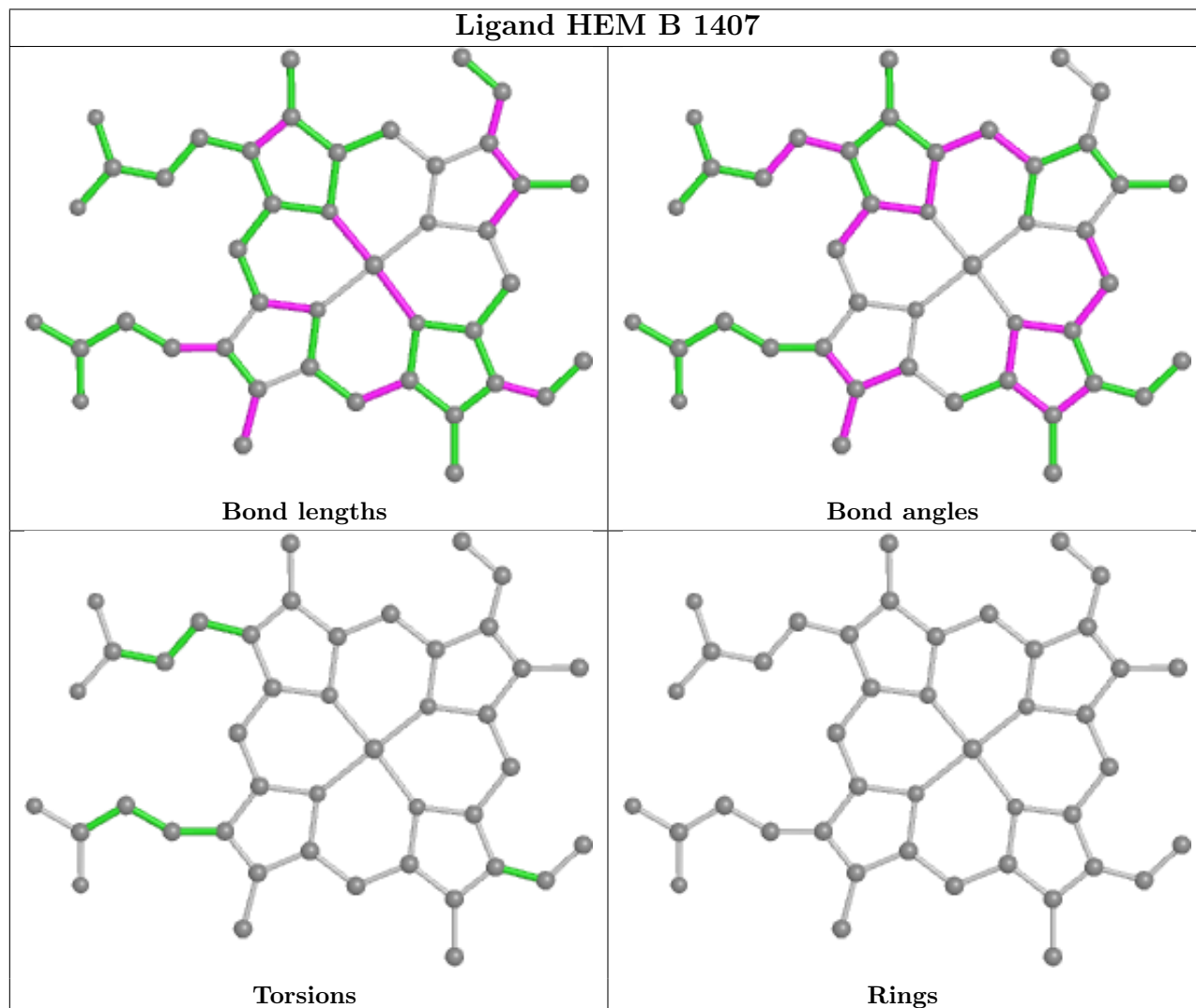
There are no ring outliers.

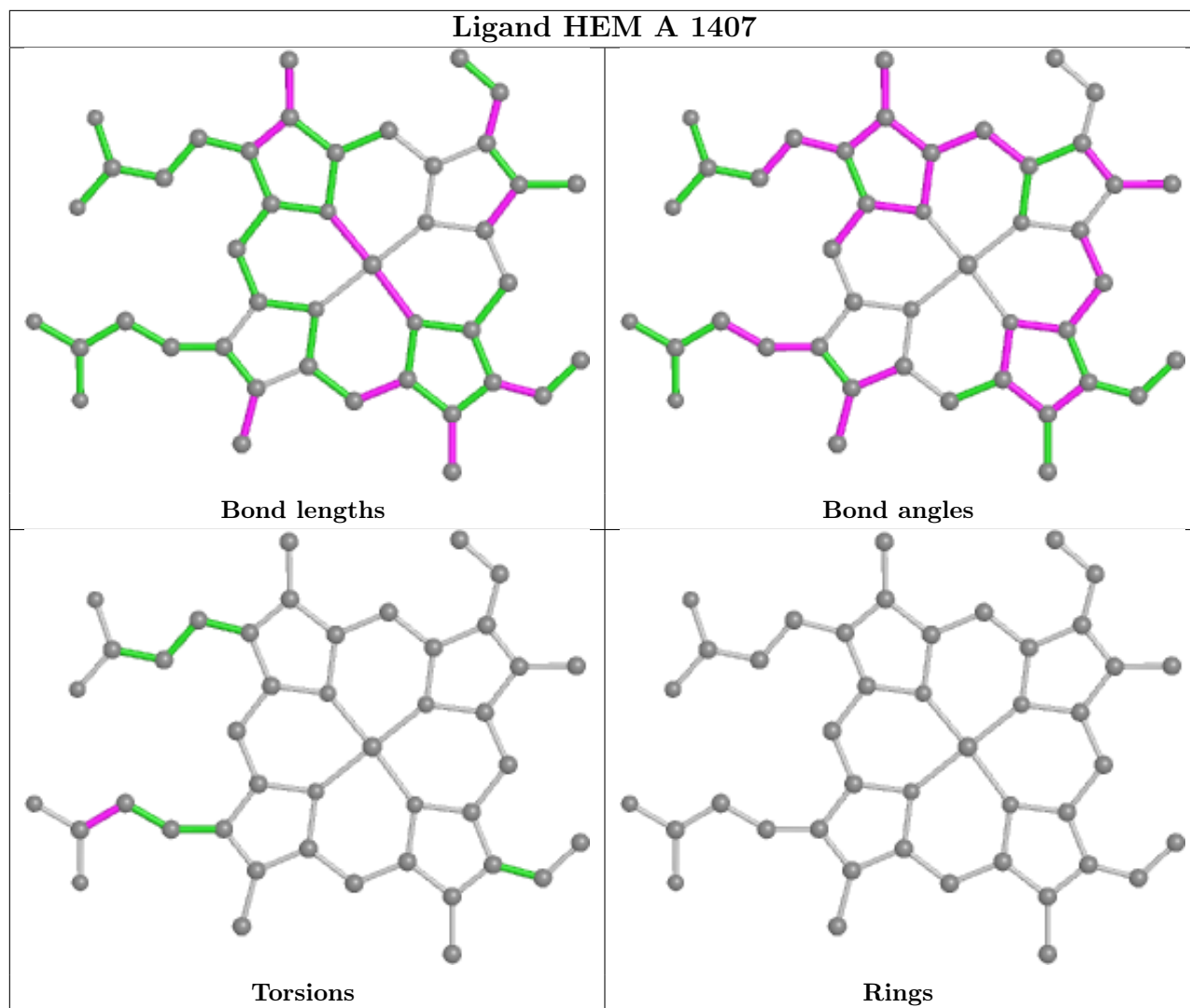
5 monomers are involved in 47 short contacts:

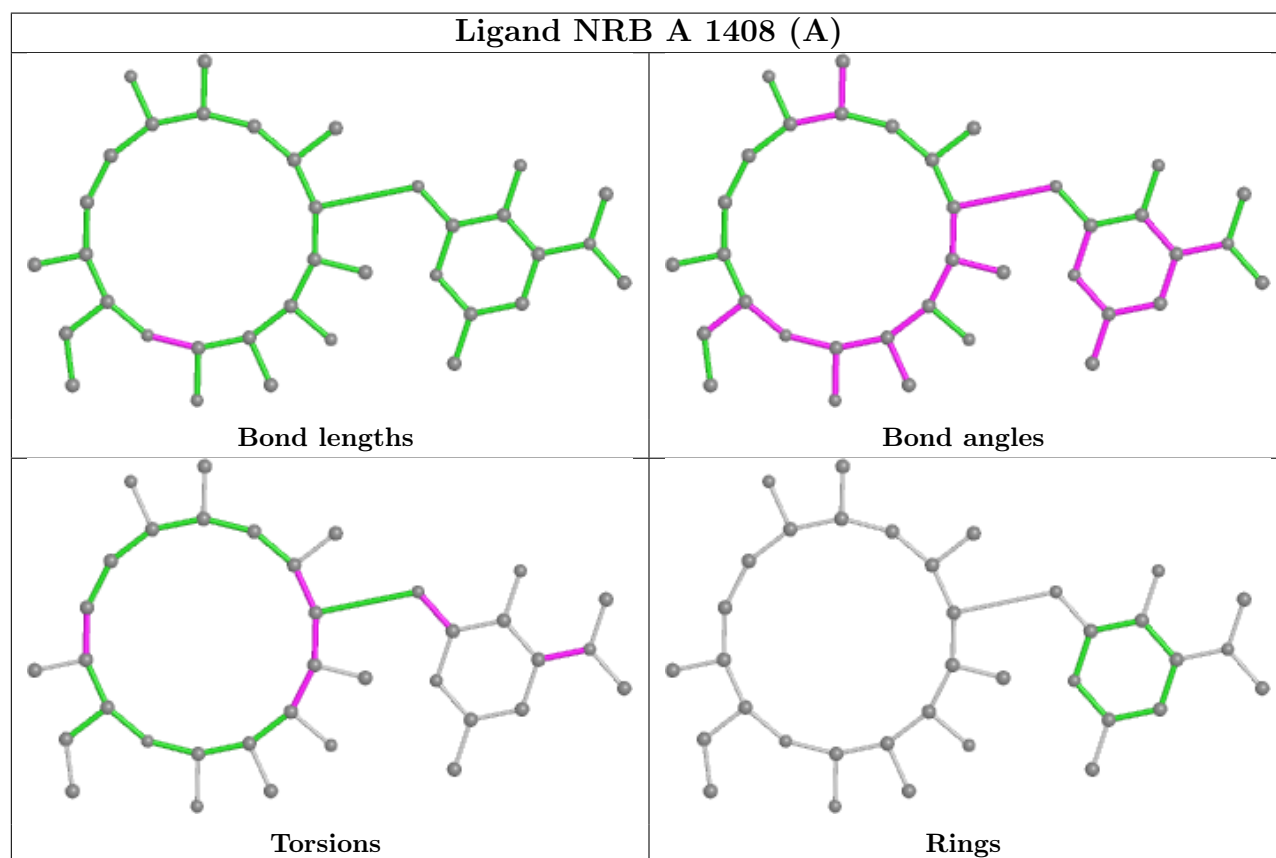
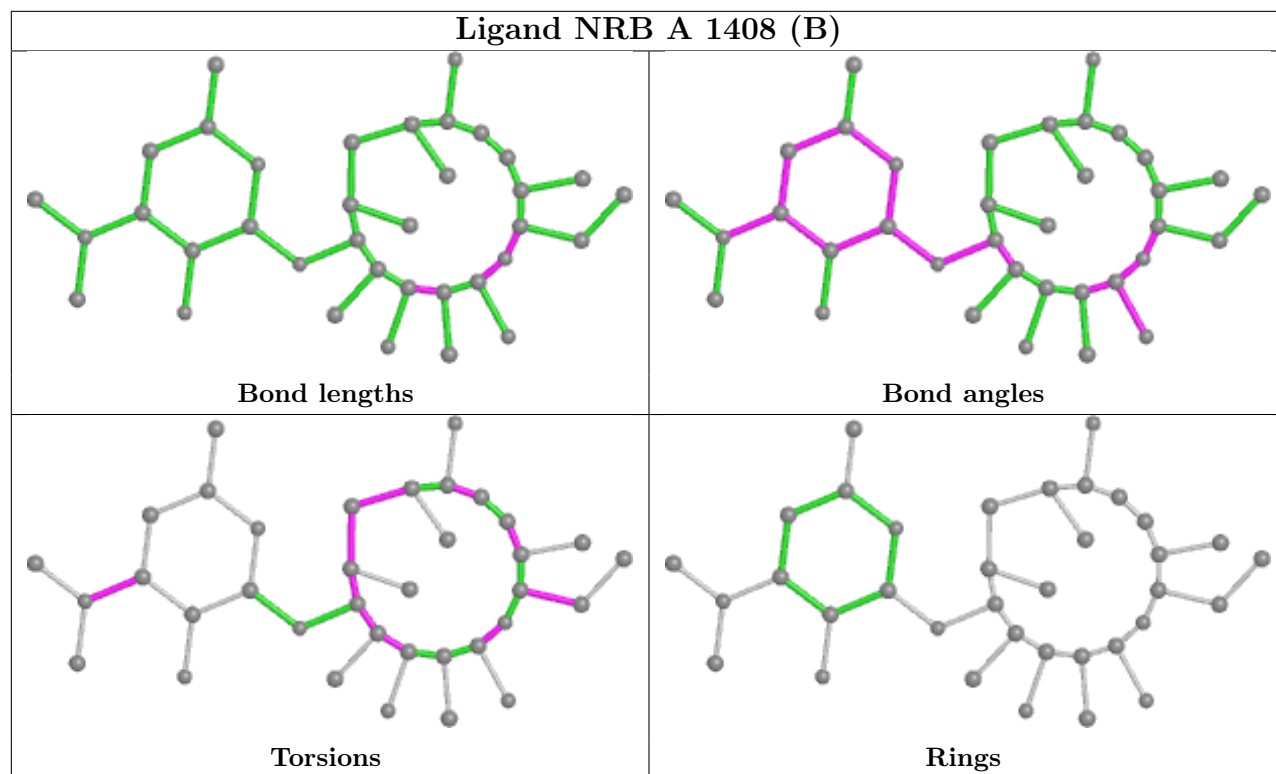
Mol	Chain	Res	Type	Clashes	Symm-Clashes
2	B	1407	HEM	2	0
2	A	1407	HEM	1	0
3	A	1408[B]	NRB	18	0
3	A	1408[A]	NRB	8	0
3	B	1408	NRB	18	0

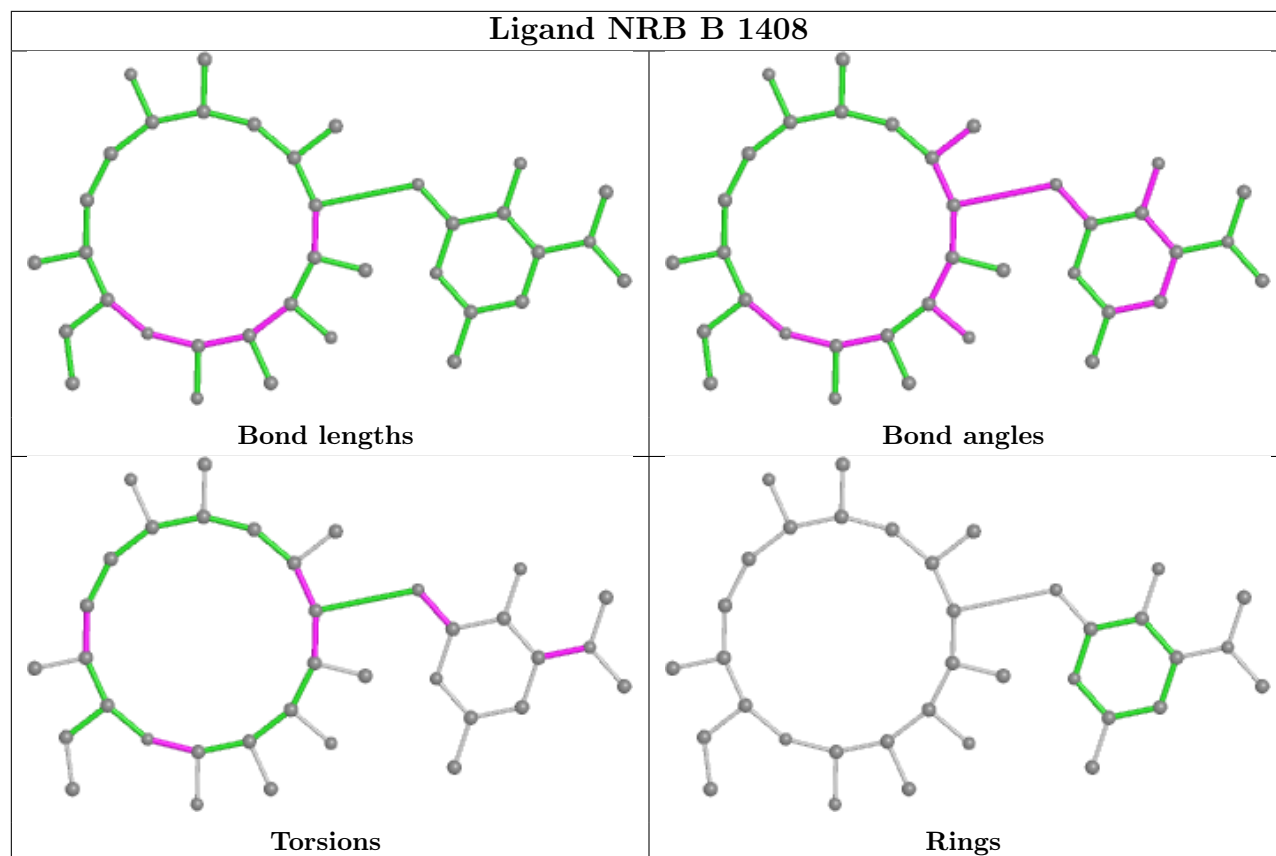
The following is a two-dimensional graphical depiction of Mogul quality analysis of bond lengths, bond angles, torsion angles, and ring geometry for all instances of the Ligand of Interest. In addition, ligands with molecular weight > 250 and outliers as shown on the validation Tables will also be included. For torsion angles, if less than 5% of the Mogul distribution of torsion angles is within 10 degrees of the torsion angle in question, then that torsion angle is considered an outlier. Any bond that is central to one or more torsion angles identified as an outlier by Mogul will be

highlighted in the graph. For rings, the root-mean-square deviation (RMSD) between the ring in question and similar rings identified by Mogul is calculated over all ring torsion angles. If the average RMSD is greater than 60 degrees and the minimal RMSD between the ring in question and any Mogul-identified rings is also greater than 60 degrees, then that ring is considered an outlier. The outliers are highlighted in purple. The color gray indicates Mogul did not find sufficient equivalents in the CSD to analyse the geometry.









5.7 Other polymers [i](#)

There are no such residues in this entry.

5.8 Polymer linkage issues [i](#)

There are no chain breaks in this entry.

6 Fit of model and data [i](#)

6.1 Protein, DNA and RNA chains [i](#)

In the following table, the column labelled ‘#RSRZ > 2’ contains the number (and percentage) of RSRZ outliers, followed by percent RSRZ outliers for the chain as percentile scores relative to all X-ray entries and entries of similar resolution. The OWAB column contains the minimum, median, 95th percentile and maximum values of the occupancy-weighted average B-factor per residue. The column labelled ‘Q < 0.9’ lists the number of (and percentage) of residues with an average occupancy less than 0.9.

Mol	Chain	Analysed	<RSRZ>	#RSRZ>2	OWAB(Å ²)	Q<0.9
1	A	395/436 (90%)	-0.09	7 (1%) 68 68	11, 21, 41, 55	0
1	B	394/436 (90%)	-0.12	14 (3%) 42 40	10, 21, 48, 55	0
All	All	789/872 (90%)	-0.11	21 (2%) 54 53	10, 21, 45, 55	0

All (21) RSRZ outliers are listed below:

Mol	Chain	Res	Type	RSRZ
1	B	180	PHE	6.5
1	B	13	PRO	5.7
1	A	182	ASP	4.7
1	A	180	PHE	4.7
1	B	182	ASP	4.1
1	B	138	PRO	3.6
1	A	13	PRO	3.0
1	B	150[A]	TRP	2.9
1	B	21	GLY	2.7
1	B	181	PRO	2.7
1	A	184	PRO	2.5
1	B	20	LEU	2.4
1	B	390	TYR	2.4
1	A	138	PRO	2.4
1	A	245[A]	HIS	2.3
1	B	384	PRO	2.3
1	A	21	GLY	2.2
1	B	22	GLN	2.2
1	B	136	ALA	2.1
1	B	19	ALA	2.1
1	B	383	SER	2.0

6.2 Non-standard residues in protein, DNA, RNA chains [i](#)

There are no non-standard protein/DNA/RNA residues in this entry.

6.3 Carbohydrates [i](#)

There are no monosaccharides in this entry.

6.4 Ligands [i](#)

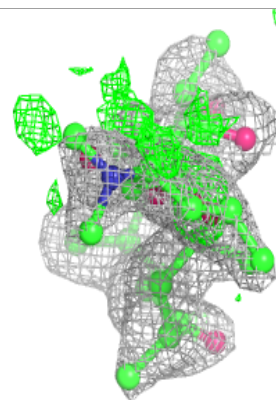
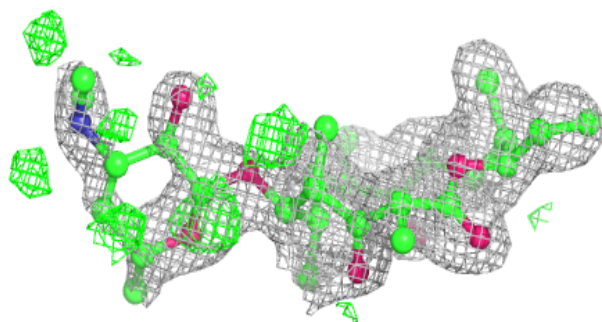
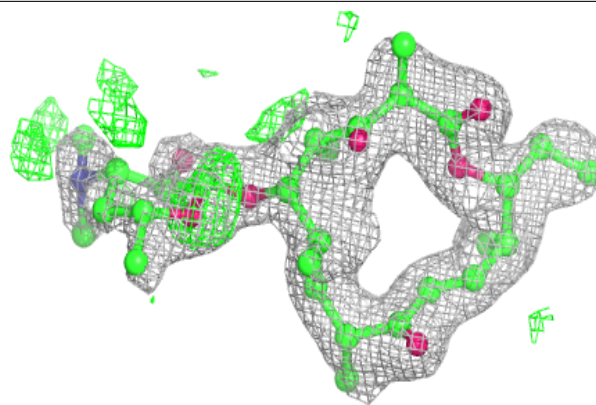
In the following table, the Atoms column lists the number of modelled atoms in the group and the number defined in the chemical component dictionary. The B-factors column lists the minimum, median, 95th percentile and maximum values of B factors of atoms in the group. The column labelled 'Q< 0.9' lists the number of atoms with occupancy less than 0.9.

Mol	Type	Chain	Res	Atoms	RSCC	RSR	B-factors(Å ²)	Q<0.9
3	NRB	A	1408[A]	36/36	0.88	0.21	18,21,30,30	36
3	NRB	A	1408[B]	36/36	0.88	0.21	34,37,40,41	36
3	NRB	B	1408	36/36	0.88	0.17	31,34,41,43	0
2	HEM	A	1407	43/43	0.98	0.13	8,11,16,25	0
2	HEM	B	1407	43/43	0.99	0.12	9,12,16,23	0

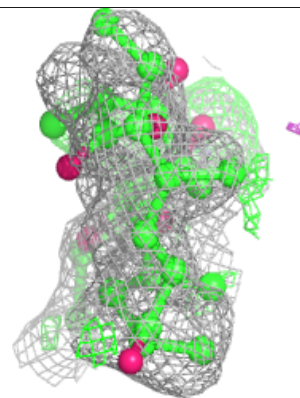
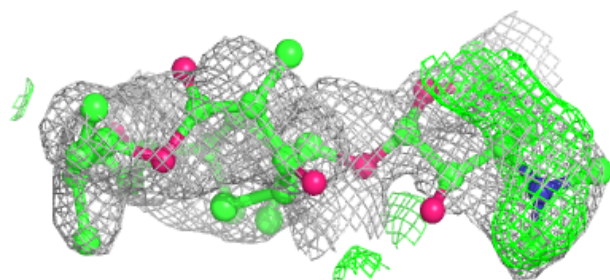
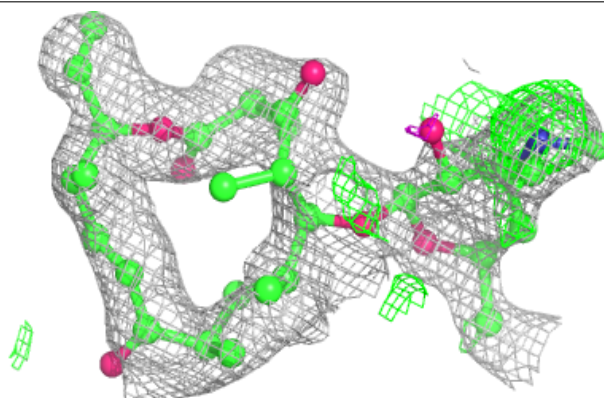
The following is a graphical depiction of the model fit to experimental electron density of all instances of the Ligand of Interest. In addition, ligands with molecular weight > 250 and outliers as shown on the geometry validation Tables will also be included. Each fit is shown from different orientation to approximate a three-dimensional view.

Electron density around NRB A 1408 (A):

$2mF_o-DF_c$ (at 0.7 rmsd) in gray
 mF_o-DF_c (at 3 rmsd) in purple (negative)
and green (positive)

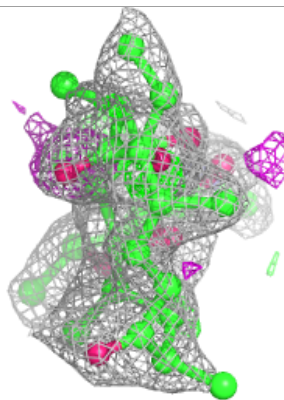
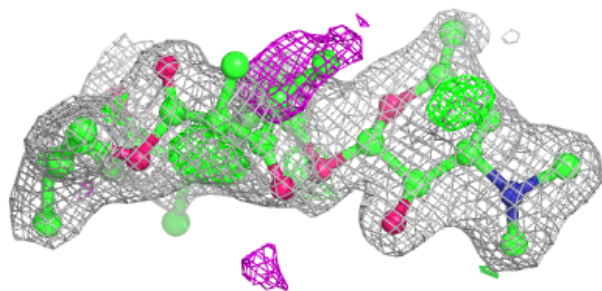
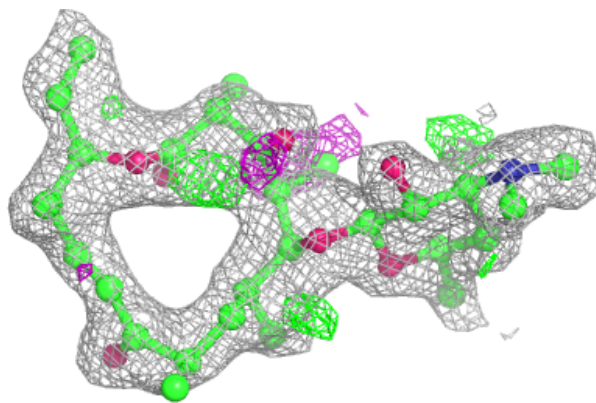
**Electron density around NRB A 1408 (B):**

$2mF_o-DF_c$ (at 0.7 rmsd) in gray
 mF_o-DF_c (at 3 rmsd) in purple (negative)
and green (positive)



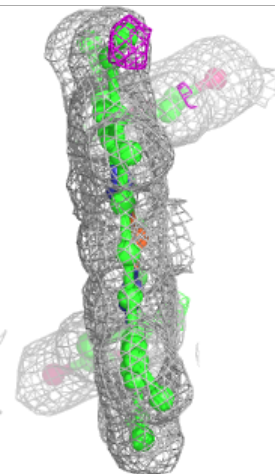
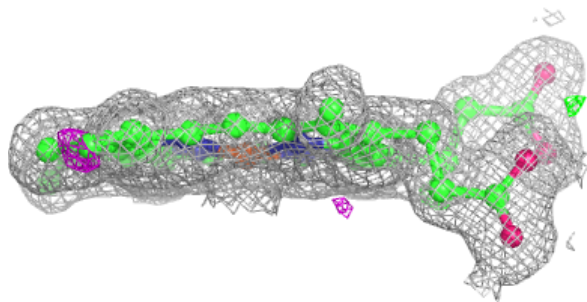
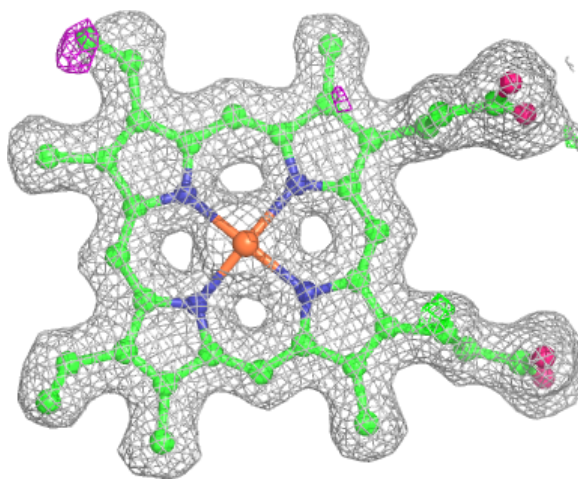
Electron density around NRB B 1408:

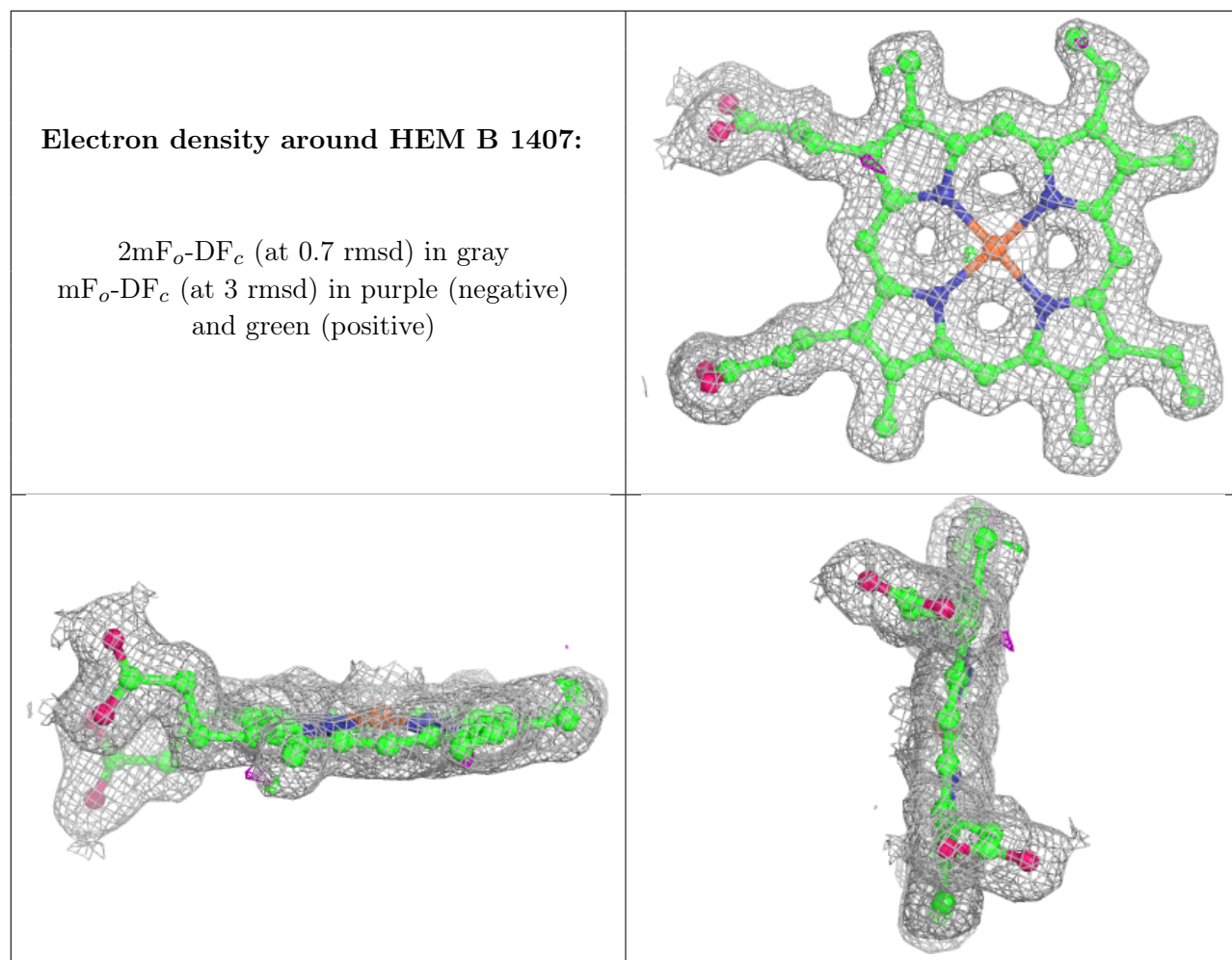
$2mF_o-DF_c$ (at 0.7 rmsd) in gray
 mF_o-DF_c (at 3 rmsd) in purple (negative)
and green (positive)



Electron density around HEM A 1407:

$2mF_o-DF_c$ (at 0.7 rmsd) in gray
 mF_o-DF_c (at 3 rmsd) in purple (negative)
and green (positive)





6.5 Other polymers [i](#)

There are no such residues in this entry.