



Full wwPDB X-ray Structure Validation Report ⓘ

Sep 25, 2023 – 07:59 AM EDT

PDB ID : 5VYQ
Title : Crystal structure of the N-formyltransferase Rv3404c from mycobacterium tuberculosis in complex with YDP-Qui4N and folinic acid
Authors : Dunsirn, M.M.; Thoden, J.B.; Holden, H.M.
Deposited on : 2017-05-26
Resolution : 1.60 Å(reported)

This is a Full wwPDB X-ray Structure Validation Report for a publicly released PDB entry.

We welcome your comments at validation@mail.wwpdb.org

A user guide is available at

<https://www.wwpdb.org/validation/2017/XrayValidationReportHelp>

with specific help available everywhere you see the ⓘ symbol.

The types of validation reports are described at

<http://www.wwpdb.org/validation/2017/FAQs#types>.

The following versions of software and data (see [references ⓘ](#)) were used in the production of this report:

MolProbity : 4.02b-467
Mogul : 1.8.5 (274361), CSD as541be (2020)
Xtriage (Phenix) : 1.13
EDS : 2.35.1
buster-report : 1.1.7 (2018)
Percentile statistics : 20191225.v01 (using entries in the PDB archive December 25th 2019)
Refmac : 5.8.0158
CCP4 : 7.0.044 (Gargrove)
Ideal geometry (proteins) : Engh & Huber (2001)
Ideal geometry (DNA, RNA) : Parkinson et al. (1996)
Validation Pipeline (wwPDB-VP) : 2.35.1

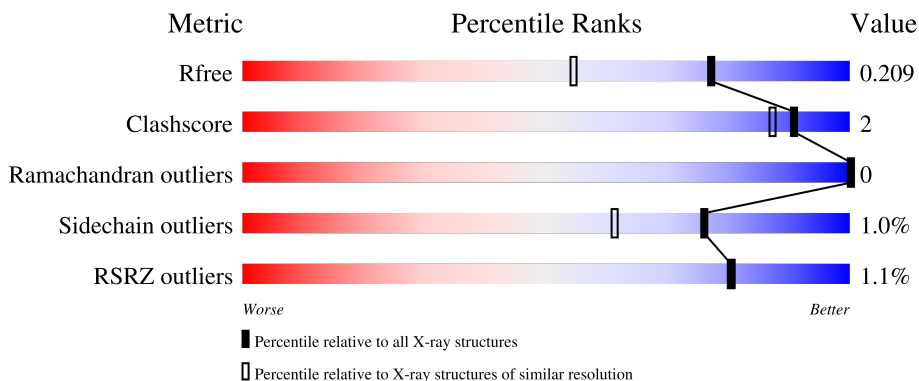
1 Overall quality at a glance

The following experimental techniques were used to determine the structure:

X-RAY DIFFRACTION

The reported resolution of this entry is 1.60 Å.

Percentile scores (ranging between 0-100) for global validation metrics of the entry are shown in the following graphic. The table shows the number of entries on which the scores are based.



Metric	Whole archive (#Entries)	Similar resolution (#Entries, resolution range(Å))
R_{free}	130704	3398 (1.60-1.60)
Clashscore	141614	3665 (1.60-1.60)
Ramachandran outliers	138981	3564 (1.60-1.60)
Sidechain outliers	138945	3563 (1.60-1.60)
RSRZ outliers	127900	3321 (1.60-1.60)

The table below summarises the geometric issues observed across the polymeric chains and their fit to the electron density. The red, orange, yellow and green segments of the lower bar indicate the fraction of residues that contain outliers for ≥ 3 , 2, 1 and 0 types of geometric quality criteria respectively. A grey segment represents the fraction of residues that are not modelled. The numeric value for each fraction is indicated below the corresponding segment, with a dot representing fractions $\leq 5\%$. The upper red bar (where present) indicates the fraction of residues that have poor fit to the electron density. The numeric value is given above the bar.

Mol	Chain	Length	Quality of chain
1	A	255	 87% 5% 8%
1	B	255	 88% 8%

2 Entry composition i

There are 11 unique types of molecules in this entry. The entry contains 4585 atoms, of which 0 are hydrogens and 0 are deuteriums.

In the tables below, the ZeroOcc column contains the number of atoms modelled with zero occupancy, the AltConf column contains the number of residues with at least one atom in alternate conformation and the Trace column contains the number of residues modelled with at most 2 atoms.

- Molecule 1 is a protein called Uncharacterized protein.

Mol	Chain	Residues	Atoms					ZeroOcc	AltConf	Trace
			Total	C	N	O	S			
1	A	235	Total	C	N	O	S	0	5	0
			1899	1201	344	347	7			
1	B	234	Total	C	N	O	S	0	0	0
			1869	1179	341	342	7			

There are 44 discrepancies between the modelled and reference sequences:

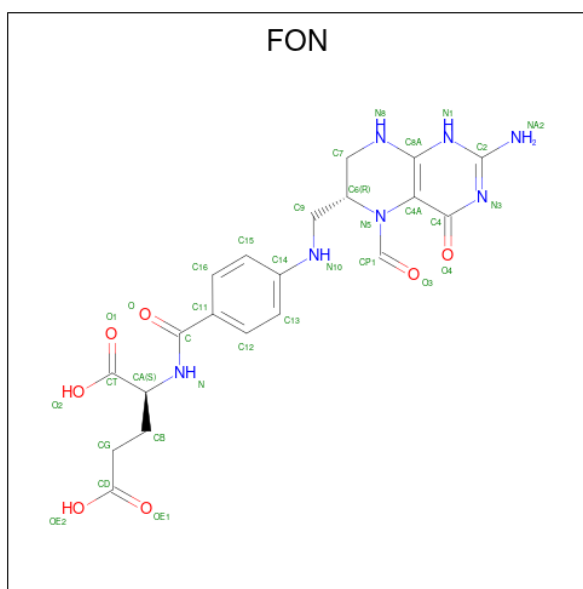
Chain	Residue	Modelled	Actual	Comment	Reference
A	-19	MET	-	initiating methionine	UNP R4MIX2
A	-18	GLY	-	expression tag	UNP R4MIX2
A	-17	SER	-	expression tag	UNP R4MIX2
A	-16	SER	-	expression tag	UNP R4MIX2
A	-15	HIS	-	expression tag	UNP R4MIX2
A	-14	HIS	-	expression tag	UNP R4MIX2
A	-13	HIS	-	expression tag	UNP R4MIX2
A	-12	HIS	-	expression tag	UNP R4MIX2
A	-11	HIS	-	expression tag	UNP R4MIX2
A	-10	HIS	-	expression tag	UNP R4MIX2
A	-9	SER	-	expression tag	UNP R4MIX2
A	-8	SER	-	expression tag	UNP R4MIX2
A	-7	ARG	-	expression tag	UNP R4MIX2
A	-6	ASN	-	expression tag	UNP R4MIX2
A	-5	LEU	-	expression tag	UNP R4MIX2
A	-4	TYR	-	expression tag	UNP R4MIX2
A	-3	PHE	-	expression tag	UNP R4MIX2
A	-2	GLN	-	expression tag	UNP R4MIX2
A	-1	GLY	-	expression tag	UNP R4MIX2
A	0	HIS	-	expression tag	UNP R4MIX2
A	1	MET	-	expression tag	UNP R4MIX2
A	2	VAL	-	expression tag	UNP R4MIX2
B	-19	MET	-	initiating methionine	UNP R4MIX2
B	-18	GLY	-	expression tag	UNP R4MIX2
B	-17	SER	-	expression tag	UNP R4MIX2

Continued on next page...

Continued from previous page...

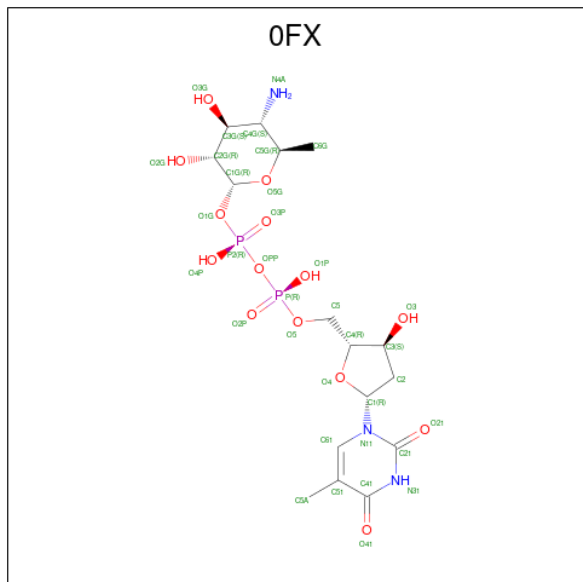
Chain	Residue	Modelled	Actual	Comment	Reference
B	-16	SER	-	expression tag	UNP R4MIX2
B	-15	HIS	-	expression tag	UNP R4MIX2
B	-14	HIS	-	expression tag	UNP R4MIX2
B	-13	HIS	-	expression tag	UNP R4MIX2
B	-12	HIS	-	expression tag	UNP R4MIX2
B	-11	HIS	-	expression tag	UNP R4MIX2
B	-10	HIS	-	expression tag	UNP R4MIX2
B	-9	SER	-	expression tag	UNP R4MIX2
B	-8	SER	-	expression tag	UNP R4MIX2
B	-7	ARG	-	expression tag	UNP R4MIX2
B	-6	ASN	-	expression tag	UNP R4MIX2
B	-5	LEU	-	expression tag	UNP R4MIX2
B	-4	TYR	-	expression tag	UNP R4MIX2
B	-3	PHE	-	expression tag	UNP R4MIX2
B	-2	GLN	-	expression tag	UNP R4MIX2
B	-1	GLY	-	expression tag	UNP R4MIX2
B	0	HIS	-	expression tag	UNP R4MIX2
B	1	MET	-	expression tag	UNP R4MIX2
B	2	VAL	-	expression tag	UNP R4MIX2

- Molecule 2 is N-{[4-({[(6R)-2-amino-5-formyl-4-oxo-1,4,5,6,7,8-hexahydropteridin-6-yl]methyl}amino)phenyl]carbonyl}-L-glutamic acid (three-letter code: FON) (formula: C₂₀H₂₃N₇O₇).



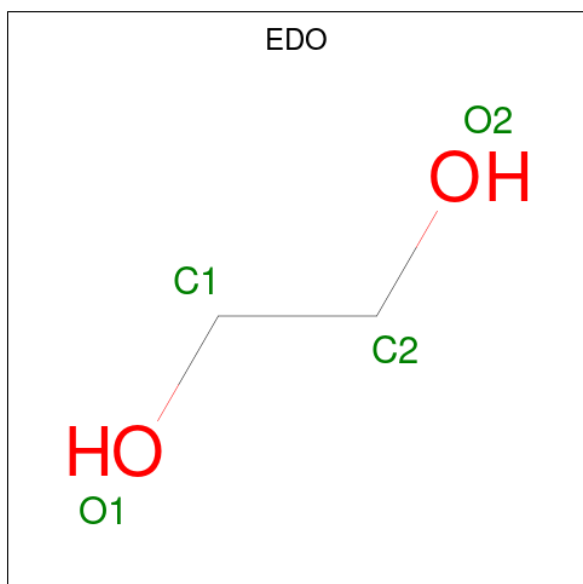
Mol	Chain	Residues	Atoms			ZeroOcc	AltConf	
			Total	C	N			O
2	A	1	34	20	7	7	0	0

- Molecule 3 is dTDP-4-amino-4,6-dideoxyglucose (three-letter code: 0FX) (formula: $C_{16}H_{27}N_3O_{14}P_2$).



Mol	Chain	Residues	Atoms				ZeroOcc	AltConf	
			Total	C	N	O			P
3	A	1	35	16	3	14	2	0	0

- Molecule 4 is 1,2-ETHANEDIOL (three-letter code: EDO) (formula: $C_2H_6O_2$).



Mol	Chain	Residues	Atoms			ZeroOcc	AltConf
			Total	C	O		
4	A	1	4	2	2	0	0

Continued on next page...

Continued from previous page...

Mol	Chain	Residues	Atoms	ZeroOcc	AltConf
4	A	1	Total C O 4 2 2	0	0
4	B	1	Total C O 4 2 2	0	0
4	B	1	Total C O 4 2 2	0	0

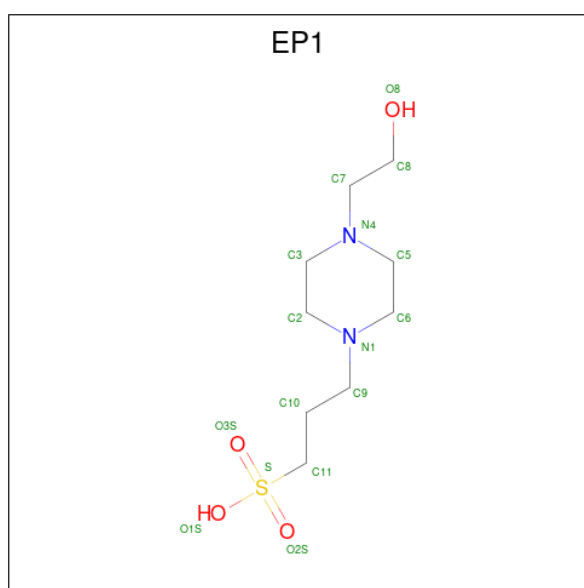
- Molecule 5 is SODIUM ION (three-letter code: NA) (formula: Na).

Mol	Chain	Residues	Atoms	ZeroOcc	AltConf
5	A	3	Total Na 3 3	0	0
5	B	1	Total Na 1 1	0	0

- Molecule 6 is CHLORIDE ION (three-letter code: CL) (formula: Cl).

Mol	Chain	Residues	Atoms	ZeroOcc	AltConf
6	A	2	Total Cl 2 2	0	0
6	B	1	Total Cl 1 1	0	0

- Molecule 7 is 3-[4-(2-HYDROXYETHYL)PIPERAZIN-1-YL]PROPANE-1-SULFONIC ACID (three-letter code: EP1) (formula: C₉H₂₀N₂O₄S).

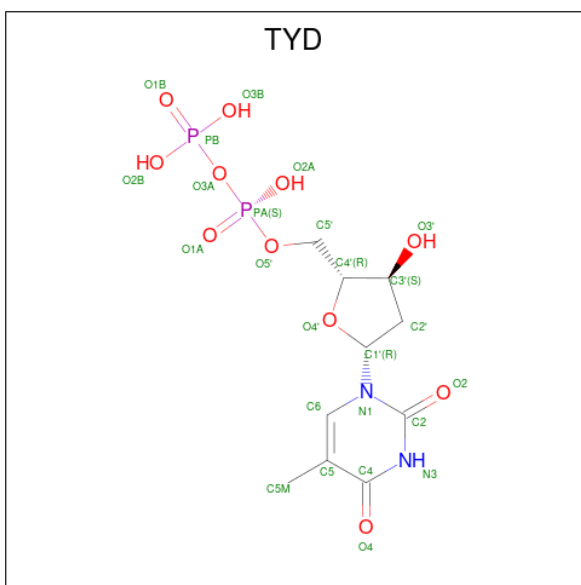


Mol	Chain	Residues	Atoms					ZeroOcc	AltConf
7	A	1	Total	C	N	O	S	0	0
			16	9	2	4	1		
7	B	1	Total	C	N	O	S	0	0
			16	9	2	4	1		

- Molecule 8 is LITHIUM ION (three-letter code: LI) (formula: Li).

Mol	Chain	Residues	Atoms		ZeroOcc	AltConf
8	A	1	Total	Li	0	0
			1	1		

- Molecule 9 is THYMIDINE-5'-DIPHOSPHATE (three-letter code: TYD) (formula: C₁₀H₁₆N₂O₁₁P₂).



Mol	Chain	Residues	Atoms					ZeroOcc	AltConf
9	B	1	Total	C	N	O	P	0	0
			25	10	2	11	2		

- Molecule 10 is POTASSIUM ION (three-letter code: K) (formula: K).

Mol	Chain	Residues	Atoms		ZeroOcc	AltConf
10	B	1	Total	K	0	0
			1	1		

- Molecule 11 is water.

Mol	Chain	Residues	Atoms		ZeroOcc	AltConf
11	A	323	Total 323	O 323	0	0
11	B	343	Total 343	O 343	0	0

4 Data and refinement statistics

Property	Value	Source
Space group	P 21 21 21	Depositor
Cell constants a, b, c, α , β , γ	47.49Å 73.02Å 173.26Å 90.00° 90.00° 90.00°	Depositor
Resolution (Å)	50.00 – 1.60 29.31 – 1.60	Depositor EDS
% Data completeness (in resolution range)	99.1 (50.00-1.60) 99.1 (29.31-1.60)	Depositor EDS
R_{merge}	0.08	Depositor
R_{sym}	(Not available)	Depositor
$\langle I/\sigma(I) \rangle$ ¹	1.98 (at 1.60Å)	Xtrriage
Refinement program	REFMAC 5.8.0124	Depositor
R, R_{free}	0.167 , 0.200 0.178 , 0.209	Depositor DCC
R_{free} test set	3990 reflections (5.00%)	wwPDB-VP
Wilson B-factor (Å ²)	13.4	Xtrriage
Anisotropy	0.100	Xtrriage
Bulk solvent k_{sol} (e/Å ³), B_{sol} (Å ²)	0.35 , 46.6	EDS
L-test for twinning ²	$\langle L \rangle = 0.47$, $\langle L^2 \rangle = 0.30$	Xtrriage
Estimated twinning fraction	No twinning to report.	Xtrriage
F_o, F_c correlation	0.96	EDS
Total number of atoms	4585	wwPDB-VP
Average B, all atoms (Å ²)	18.0	wwPDB-VP

Xtrriage's analysis on translational NCS is as follows: *The largest off-origin peak in the Patterson function is 5.05% of the height of the origin peak. No significant pseudotranslation is detected.*

¹Intensities estimated from amplitudes.

²Theoretical values of $\langle |L| \rangle$, $\langle L^2 \rangle$ for acentric reflections are 0.5, 0.333 respectively for untwinned datasets, and 0.375, 0.2 for perfectly twinned datasets.

5 Model quality [i](#)

5.1 Standard geometry [i](#)

Bond lengths and bond angles in the following residue types are not validated in this section: TYD, FON, OFX, EDO, LI, CL, K, EP1, NA

The Z score for a bond length (or angle) is the number of standard deviations the observed value is removed from the expected value. A bond length (or angle) with $|Z| > 5$ is considered an outlier worth inspection. RMSZ is the root-mean-square of all Z scores of the bond lengths (or angles).

Mol	Chain	Bond lengths		Bond angles	
		RMSZ	# Z >5	RMSZ	# Z >5
1	A	0.60	0/1958	0.99	2/2657 (0.1%)
1	B	0.59	0/1912	1.00	5/2592 (0.2%)
All	All	0.60	0/3870	0.99	7/5249 (0.1%)

There are no bond length outliers.

All (7) bond angle outliers are listed below:

Mol	Chain	Res	Type	Atoms	Z	Observed(°)	Ideal(°)
1	A	224	ARG	NE-CZ-NH1	7.33	123.97	120.30
1	B	155	ASP	CB-CG-OD1	6.58	124.22	118.30
1	B	1	MET	CA-CB-CG	-6.46	102.32	113.30
1	B	186	ASP	CB-CG-OD1	5.61	123.35	118.30
1	B	199	ARG	NE-CZ-NH1	-5.20	117.70	120.30
1	B	23	ARG	NE-CZ-NH1	5.13	122.87	120.30
1	A	201	ARG	NE-CZ-NH2	-5.00	117.80	120.30

There are no chirality outliers.

There are no planarity outliers.

5.2 Too-close contacts [i](#)

In the following table, the Non-H and H(model) columns list the number of non-hydrogen atoms and hydrogen atoms in the chain respectively. The H(added) column lists the number of hydrogen atoms added and optimized by MolProbity. The Clashes column lists the number of clashes within the asymmetric unit, whereas Symm-Clashes lists symmetry-related clashes.

Mol	Chain	Non-H	H(model)	H(added)	Clashes	Symm-Clashes
1	A	1899	0	1858	9	0
1	B	1869	0	1823	2	0

Continued on next page...

Continued from previous page...

Mol	Chain	Non-H	H(model)	H(added)	Clashes	Symm-Clashes
2	A	34	0	21	4	0
3	A	35	0	26	0	0
4	A	8	0	12	0	0
4	B	8	0	12	0	0
5	A	3	0	0	0	0
5	B	1	0	0	0	0
6	A	2	0	0	1	0
6	B	1	0	0	0	0
7	A	16	0	20	0	0
7	B	16	0	20	0	0
8	A	1	0	0	0	0
9	B	25	0	13	0	0
10	B	1	0	0	0	0
11	A	323	0	0	4	2
11	B	343	0	0	1	2
All	All	4585	0	3805	13	2

The all-atom clashscore is defined as the number of clashes found per 1000 atoms (including hydrogen atoms). The all-atom clashscore for this structure is 2.

All (13) close contacts within the same asymmetric unit are listed below, sorted by their clash magnitude.

Atom-1	Atom-2	Interatomic distance (Å)	Clash overlap (Å)
1:A:68:PHE:H	2:A:301:FON:HN1	1.38	0.70
1:A:47:GLU:HG2	11:A:679:HOH:O	1.90	0.70
1:A:67[A]:ARG:NE	11:A:401:HOH:O	2.36	0.58
1:A:163:THR:HG23	11:A:584:HOH:O	2.09	0.53
1:A:145:ILE:HA	1:A:148[B]:GLU:HG2	1.94	0.50
1:B:148:GLU:OE1	11:B:401:HOH:O	2.20	0.48
1:A:45:VAL:O	1:A:49[B]:VAL:HG13	2.14	0.48
1:A:7:LEU:HD13	1:A:45:VAL:HG21	1.99	0.45
1:A:190:ARG:HD3	6:A:309:CL:CL	2.54	0.44
1:A:67[B]:ARG:NH2	2:A:301:FON:O2	2.48	0.43
2:A:301:FON:O4	2:A:301:FON:HCP1	2.20	0.42
1:B:55:ARG:HD3	1:B:56:TYR:CZ	2.54	0.42
2:A:301:FON:H13	11:A:425:HOH:O	2.20	0.41

All (2) symmetry-related close contacts are listed below. The label for Atom-2 includes the symmetry operator and encoded unit-cell translations to be applied.

Atom-1	Atom-2	Interatomic distance (Å)	Clash overlap (Å)
11:A:615:HOH:O	11:B:673:HOH:O[2_355]	1.71	0.49
11:A:574:HOH:O	11:B:588:HOH:O[4_555]	2.15	0.05

5.3 Torsion angles [i](#)

5.3.1 Protein backbone [i](#)

In the following table, the Percentiles column shows the percent Ramachandran outliers of the chain as a percentile score with respect to all X-ray entries followed by that with respect to entries of similar resolution.

The Analysed column shows the number of residues for which the backbone conformation was analysed, and the total number of residues.

Mol	Chain	Analysed	Favoured	Allowed	Outliers	Percentiles	
1	A	238/255 (93%)	233 (98%)	5 (2%)	0	100	100
1	B	232/255 (91%)	229 (99%)	3 (1%)	0	100	100
All	All	470/510 (92%)	462 (98%)	8 (2%)	0	100	100

There are no Ramachandran outliers to report.

5.3.2 Protein sidechains [i](#)

In the following table, the Percentiles column shows the percent sidechain outliers of the chain as a percentile score with respect to all X-ray entries followed by that with respect to entries of similar resolution.

The Analysed column shows the number of residues for which the sidechain conformation was analysed, and the total number of residues.

Mol	Chain	Analysed	Rotameric	Outliers	Percentiles	
1	A	205/219 (94%)	203 (99%)	2 (1%)	76	61
1	B	200/219 (91%)	198 (99%)	2 (1%)	76	61
All	All	405/438 (92%)	401 (99%)	4 (1%)	76	61

All (4) residues with a non-rotameric sidechain are listed below:

Mol	Chain	Res	Type
1	A	177	LYS
1	A	193	PHE

Continued on next page...

Continued from previous page...

Mol	Chain	Res	Type
1	B	55	ARG
1	B	66	GLN

Sometimes sidechains can be flipped to improve hydrogen bonding and reduce clashes. All (4) such sidechains are listed below:

Mol	Chain	Res	Type
1	A	0	HIS
1	B	80	ASN
1	B	82	HIS
1	B	181	GLN

5.3.3 RNA [i](#)

There are no RNA molecules in this entry.

5.4 Non-standard residues in protein, DNA, RNA chains [i](#)

There are no non-standard protein/DNA/RNA residues in this entry.

5.5 Carbohydrates [i](#)

There are no monosaccharides in this entry.

5.6 Ligand geometry [i](#)

Of 18 ligands modelled in this entry, 9 are monoatomic - leaving 9 for Mogul analysis.

In the following table, the Counts columns list the number of bonds (or angles) for which Mogul statistics could be retrieved, the number of bonds (or angles) that are observed in the model and the number of bonds (or angles) that are defined in the Chemical Component Dictionary. The Link column lists molecule types, if any, to which the group is linked. The Z score for a bond length (or angle) is the number of standard deviations the observed value is removed from the expected value. A bond length (or angle) with $|Z| > 2$ is considered an outlier worth inspection. RMSZ is the root-mean-square of all Z scores of the bond lengths (or angles).

Mol	Type	Chain	Res	Link	Bond lengths			Bond angles		
					Counts	RMSZ	# Z > 2	Counts	RMSZ	# Z > 2
7	EP1	B	305	-	16,16,16	2.11	2 (12%)	21,21,21	1.89	2 (9%)
4	EDO	B	303	-	3,3,3	0.81	0	2,2,2	0.42	0

Mol	Type	Chain	Res	Link	Bond lengths			Bond angles		
					Counts	RMSZ	# Z > 2	Counts	RMSZ	# Z > 2
2	FON	A	301	-	34,36,36	1.62	3 (8%)	36,50,50	1.79	9 (25%)
4	EDO	A	304	-	3,3,3	0.42	0	2,2,2	0.40	0
9	TYD	B	301	-	21,26,26	1.04	1 (4%)	27,40,40	2.11	6 (22%)
7	EP1	A	308	-	16,16,16	1.95	2 (12%)	21,21,21	2.03	2 (9%)
4	EDO	B	302	-	3,3,3	0.38	0	2,2,2	0.15	0
4	EDO	A	303	-	3,3,3	0.40	0	2,2,2	0.62	0
3	0FX	A	302	-	33,37,37	1.78	5 (15%)	52,57,57	2.26	17 (32%)

In the following table, the Chirals column lists the number of chiral outliers, the number of chiral centers analysed, the number of these observed in the model and the number defined in the Chemical Component Dictionary. Similar counts are reported in the Torsion and Rings columns. '-' means no outliers of that kind were identified.

Mol	Type	Chain	Res	Link	Chirals	Torsions	Rings
7	EP1	B	305	-	-	3/10/20/20	0/1/1/1
4	EDO	B	303	-	-	0/1/1/1	-
2	FON	A	301	-	-	0/24/37/37	0/2/3/3
4	EDO	A	304	-	-	0/1/1/1	-
9	TYD	B	301	-	-	2/13/28/28	0/2/2/2
7	EP1	A	308	-	-	1/10/20/20	0/1/1/1
4	EDO	B	302	-	-	0/1/1/1	-
4	EDO	A	303	-	-	0/1/1/1	-
3	0FX	A	302	-	-	1/21/53/53	0/3/3/3

All (13) bond length outliers are listed below:

Mol	Chain	Res	Type	Atoms	Z	Observed(Å)	Ideal(Å)
7	B	305	EP1	C11-S	-6.98	1.67	1.77
2	A	301	FON	CP1-N5	-6.28	1.27	1.35
3	A	302	0FX	O41-C41	6.14	1.35	1.23
7	A	308	EP1	C11-S	-6.11	1.68	1.77
3	A	302	0FX	O21-C21	4.73	1.31	1.23
2	A	301	FON	C4A-C4	4.60	1.47	1.41
7	B	305	EP1	O1S-S	4.54	1.63	1.47
7	A	308	EP1	O1S-S	4.53	1.63	1.47
3	A	302	0FX	C41-C51	-4.02	1.38	1.44
9	B	301	TYD	C5-C4	3.07	1.48	1.41
2	A	301	FON	C4A-C8A	2.57	1.46	1.41
3	A	302	0FX	C61-C51	2.45	1.38	1.34
3	A	302	0FX	C21-N31	-2.33	1.33	1.38

All (36) bond angle outliers are listed below:

Mol	Chain	Res	Type	Atoms	Z	Observed(°)	Ideal(°)
9	B	301	TYD	C2-N3-C4	8.45	122.28	115.14
7	B	305	EP1	O2S-S-C11	7.59	116.06	106.92
7	A	308	EP1	O3S-S-C11	6.98	115.32	106.92
3	A	302	0FX	C41-N31-C21	-6.86	118.48	127.35
3	A	302	0FX	C51-C41-N31	6.68	121.01	115.31
3	A	302	0FX	N31-C21-N11	6.23	123.16	114.89
2	A	301	FON	C2-N3-C4	4.65	123.31	115.93
7	A	308	EP1	O2S-S-C11	4.42	112.24	106.92
3	A	302	0FX	C61-N11-C21	-4.37	116.87	121.30
2	A	301	FON	C2-N1-C8A	4.28	124.13	114.54
3	A	302	0FX	O21-C21-N11	-3.74	117.81	122.79
2	A	301	FON	N1-C2-N3	-3.55	119.85	125.42
9	B	301	TYD	O2B-PB-O3A	-3.26	93.70	104.64
2	A	301	FON	NA2-C2-N3	3.02	121.95	117.25
3	A	302	0FX	C6G-C5G-C4G	-2.93	107.95	114.10
3	A	302	0FX	O3G-C3G-C4G	2.89	115.42	110.22
3	A	302	0FX	O41-C41-C51	-2.84	121.61	124.90
3	A	302	0FX	C5A-C51-C41	2.77	121.81	118.77
9	B	301	TYD	O3B-PB-O3A	2.73	113.80	104.64
2	A	301	FON	C4A-N5-C6	-2.68	114.56	119.31
9	B	301	TYD	O5'-C5'-C4'	-2.57	100.13	108.99
3	A	302	0FX	C5A-C51-C61	-2.56	119.43	122.85
2	A	301	FON	O3-CP1-N5	-2.54	121.68	125.36
9	B	301	TYD	O2A-PA-O1A	2.48	124.49	112.24
2	A	301	FON	C4A-C4-N3	-2.45	118.11	123.14
3	A	302	0FX	O4-C1-C2	2.37	110.73	106.25
7	B	305	EP1	O3S-S-O2S	-2.25	106.16	113.95
3	A	302	0FX	C3G-C4G-N4A	-2.24	106.46	111.05
3	A	302	0FX	C1-N11-C61	2.20	124.57	120.77
9	B	301	TYD	C5-C6-N1	-2.11	119.92	122.19
3	A	302	0FX	O1P-P-O2P	2.07	122.46	112.24
2	A	301	FON	O1-CT-CA	-2.06	115.48	122.26
2	A	301	FON	CG-CB-CA	-2.06	109.30	113.16
3	A	302	0FX	C51-C61-N11	-2.06	121.22	123.34
3	A	302	0FX	O5G-C5G-C4G	2.05	113.94	110.09
3	A	302	0FX	O5G-C1G-O1G	-2.03	108.71	111.36

There are no chirality outliers.

All (7) torsion outliers are listed below:

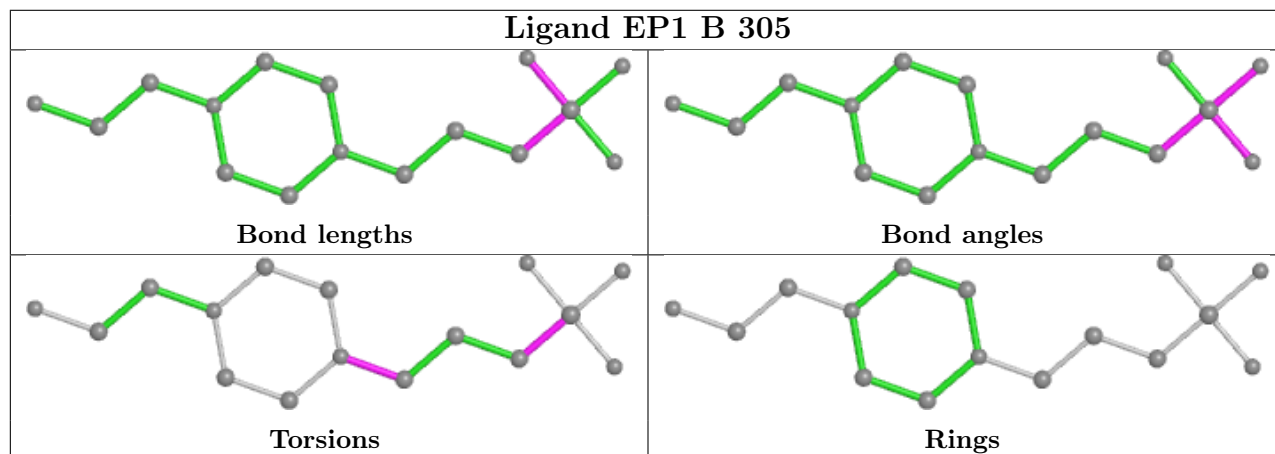
Mol	Chain	Res	Type	Atoms
3	A	302	0FX	C1G-O1G-P2-OPP
7	B	305	EP1	C10-C9-N1-C2
7	B	305	EP1	C10-C11-S-O3S
9	B	301	TYD	PB-O3A-PA-O1A
9	B	301	TYD	PB-O3A-PA-O2A
7	A	308	EP1	N4-C7-C8-O8
7	B	305	EP1	C10-C11-S-O1S

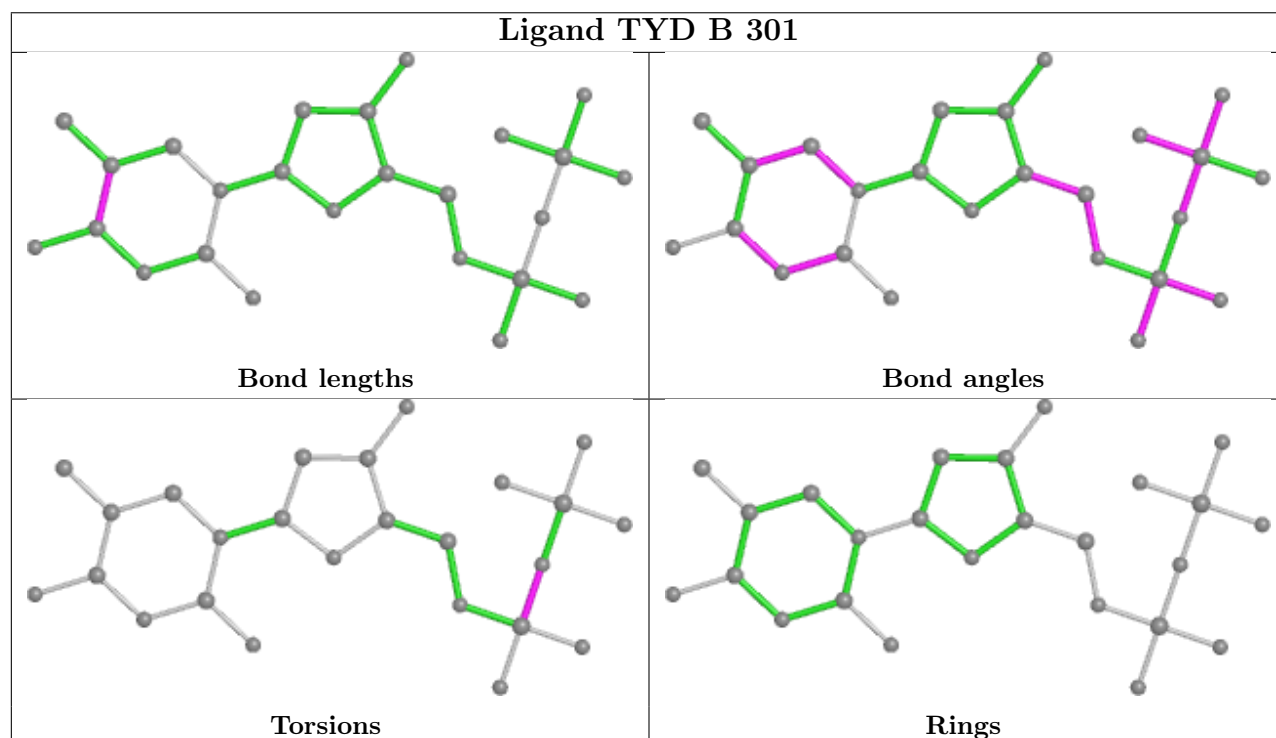
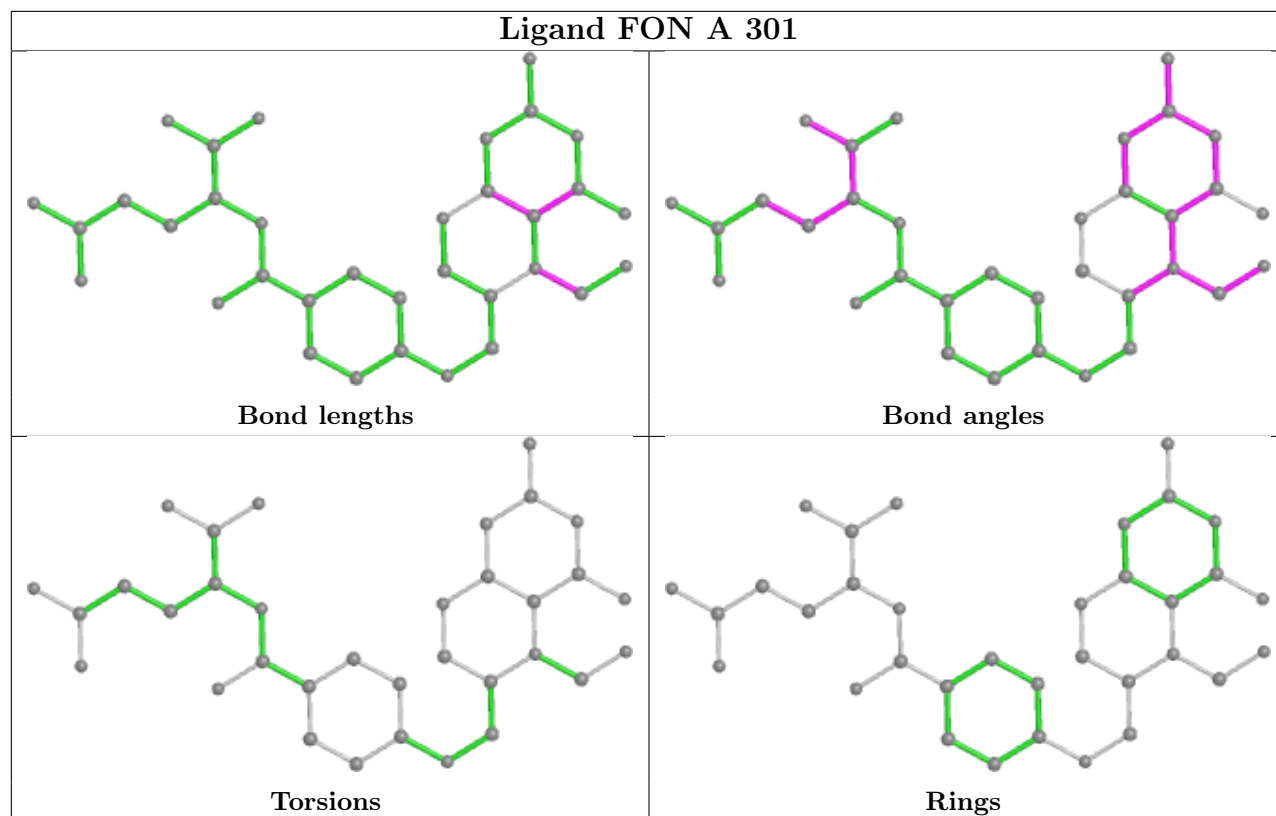
There are no ring outliers.

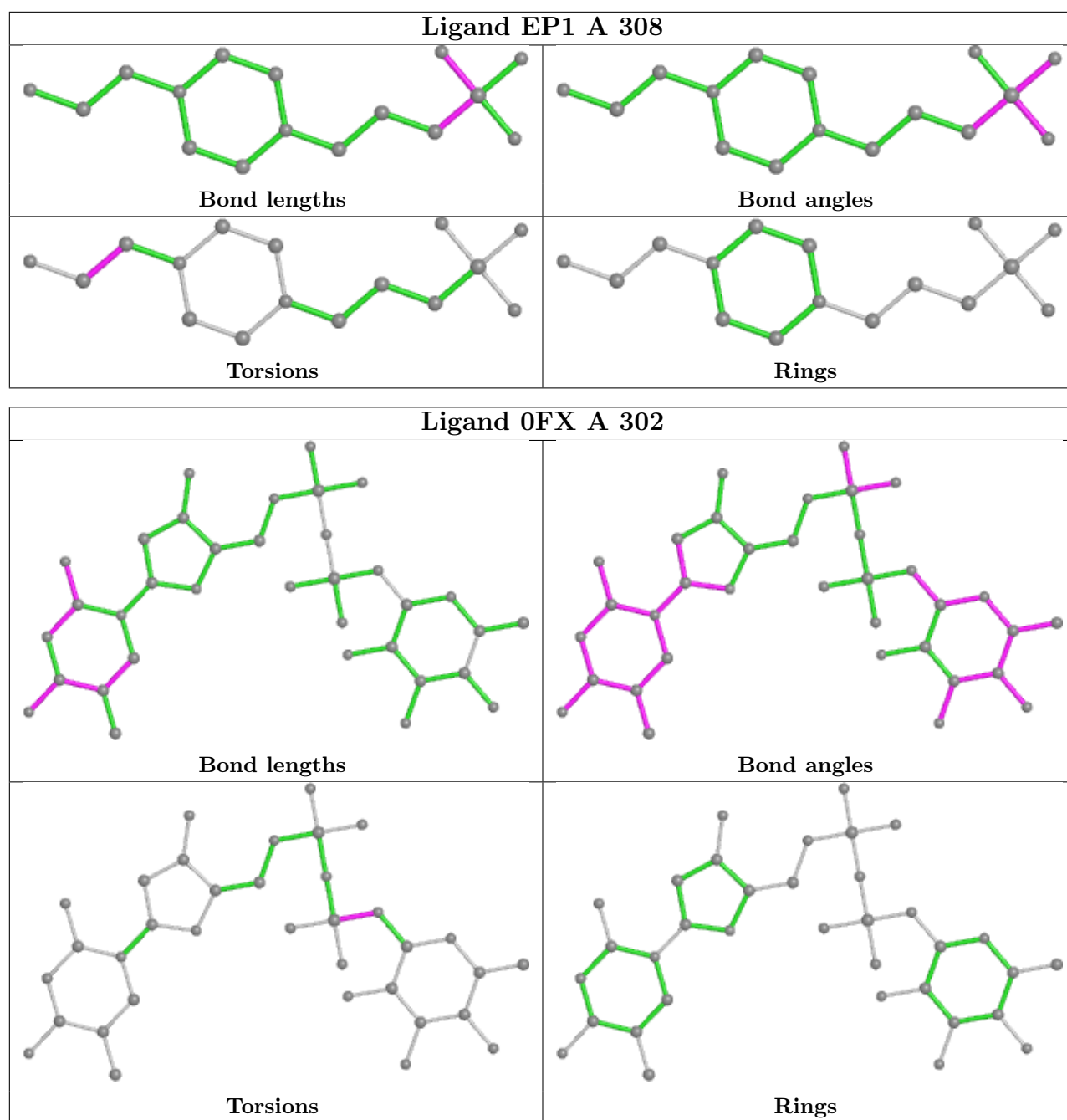
1 monomer is involved in 4 short contacts:

Mol	Chain	Res	Type	Clashes	Symm-Clashes
2	A	301	FON	4	0

The following is a two-dimensional graphical depiction of Mogul quality analysis of bond lengths, bond angles, torsion angles, and ring geometry for all instances of the Ligand of Interest. In addition, ligands with molecular weight > 250 and outliers as shown on the validation Tables will also be included. For torsion angles, if less than 5% of the Mogul distribution of torsion angles is within 10 degrees of the torsion angle in question, then that torsion angle is considered an outlier. Any bond that is central to one or more torsion angles identified as an outlier by Mogul will be highlighted in the graph. For rings, the root-mean-square deviation (RMSD) between the ring in question and similar rings identified by Mogul is calculated over all ring torsion angles. If the average RMSD is greater than 60 degrees and the minimal RMSD between the ring in question and any Mogul-identified rings is also greater than 60 degrees, then that ring is considered an outlier. The outliers are highlighted in purple. The color gray indicates Mogul did not find sufficient equivalents in the CSD to analyse the geometry.







5.7 Other polymers [\(i\)](#)

There are no such residues in this entry.

5.8 Polymer linkage issues [\(i\)](#)

There are no chain breaks in this entry.

6 Fit of model and data [i](#)

6.1 Protein, DNA and RNA chains [i](#)

In the following table, the column labelled ‘#RSRZ> 2’ contains the number (and percentage) of RSRZ outliers, followed by percent RSRZ outliers for the chain as percentile scores relative to all X-ray entries and entries of similar resolution. The OWAB column contains the minimum, median, 95th percentile and maximum values of the occupancy-weighted average B-factor per residue. The column labelled ‘Q< 0.9’ lists the number of (and percentage) of residues with an average occupancy less than 0.9.

Mol	Chain	Analysed	<RSRZ>	#RSRZ>2	OWAB(Å ²)	Q<0.9
1	A	235/255 (92%)	-0.42	3 (1%) 77 77	9, 14, 29, 56	0
1	B	234/255 (91%)	-0.56	2 (0%) 84 84	8, 14, 30, 55	0
All	All	469/510 (91%)	-0.49	5 (1%) 80 80	8, 14, 30, 56	0

All (5) RSRZ outliers are listed below:

Mol	Chain	Res	Type	RSRZ
1	A	232	PRO	4.5
1	A	-2	GLN	3.0
1	A	0	HIS	3.0
1	B	168	ALA	2.3
1	B	231	LYS	2.1

6.2 Non-standard residues in protein, DNA, RNA chains [i](#)

There are no non-standard protein/DNA/RNA residues in this entry.

6.3 Carbohydrates [i](#)

There are no monosaccharides in this entry.

6.4 Ligands [i](#)

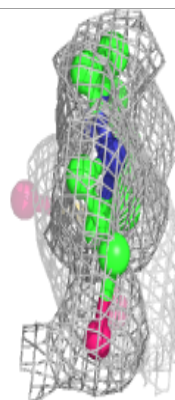
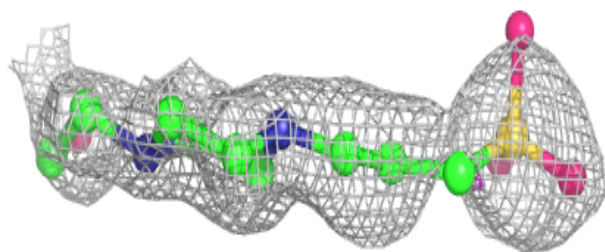
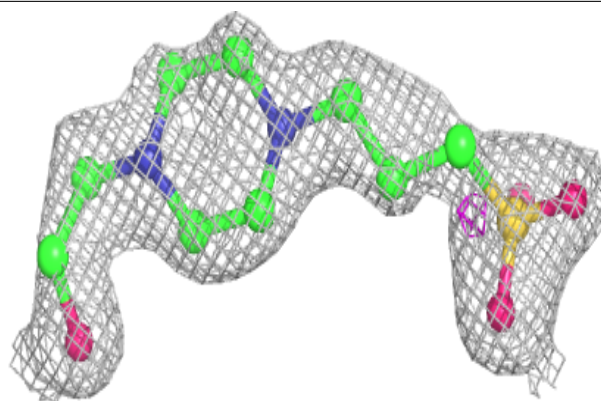
In the following table, the Atoms column lists the number of modelled atoms in the group and the number defined in the chemical component dictionary. The B-factors column lists the minimum, median, 95th percentile and maximum values of B factors of atoms in the group. The column labelled ‘Q< 0.9’ lists the number of atoms with occupancy less than 0.9.

Mol	Type	Chain	Res	Atoms	RSCC	RSR	B-factors(\AA^2)	Q<0.9
7	EP1	B	305	16/16	0.88	0.18	37,46,52,63	0
8	LI	A	311	1/1	0.88	0.48	11,11,11,11	0
2	FON	A	301	34/34	0.89	0.13	14,24,46,50	0
7	EP1	A	308	16/16	0.90	0.21	32,41,47,50	0
4	EDO	B	303	4/4	0.92	0.11	17,22,22,23	0
5	NA	A	310	1/1	0.94	0.15	32,32,32,32	0
4	EDO	A	304	4/4	0.96	0.09	21,26,30,34	0
9	TYD	B	301	25/25	0.96	0.07	14,18,24,28	0
4	EDO	A	303	4/4	0.97	0.06	16,17,17,18	0
4	EDO	B	302	4/4	0.97	0.07	15,16,16,19	0
3	OFX	A	302	35/35	0.98	0.07	11,12,20,24	0
5	NA	B	306	1/1	0.98	0.07	22,22,22,22	0
5	NA	A	305	1/1	0.99	0.04	14,14,14,14	0
5	NA	A	306	1/1	0.99	0.08	25,25,25,25	0
6	CL	A	307	1/1	0.99	0.02	16,16,16,16	0
6	CL	A	309	1/1	0.99	0.08	27,27,27,27	0
10	K	B	307	1/1	0.99	0.02	12,12,12,12	0
6	CL	B	304	1/1	1.00	0.03	18,18,18,18	0

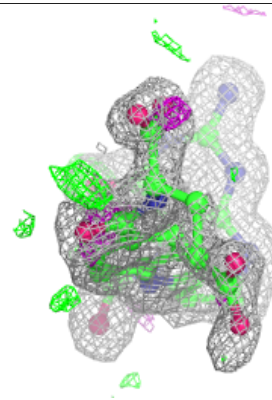
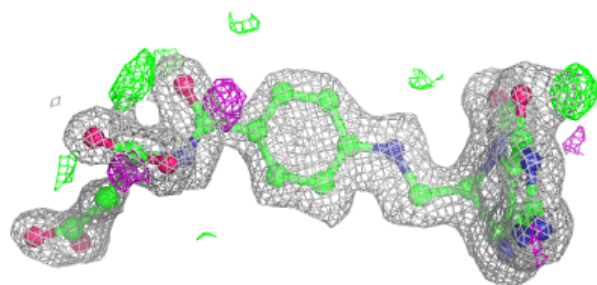
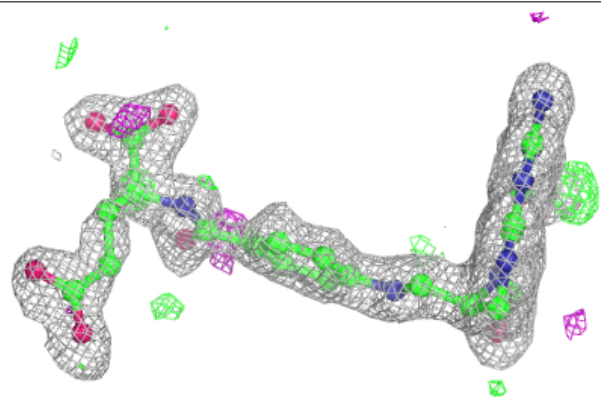
The following is a graphical depiction of the model fit to experimental electron density of all instances of the Ligand of Interest. In addition, ligands with molecular weight > 250 and outliers as shown on the geometry validation Tables will also be included. Each fit is shown from different orientation to approximate a three-dimensional view.

Electron density around EP1 B 305:

$2mF_o-DF_c$ (at 0.7 rmsd) in gray
 mF_o-DF_c (at 3 rmsd) in purple (negative)
and green (positive)

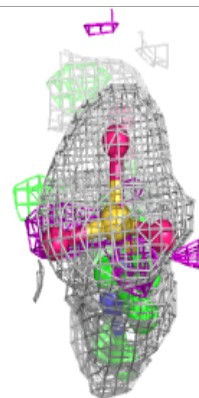
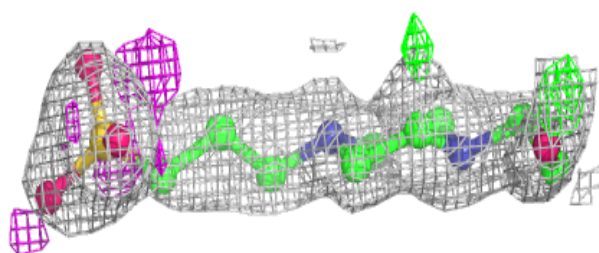
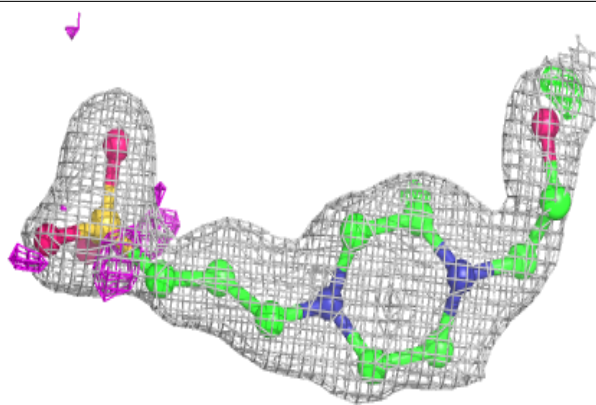
**Electron density around FON A 301:**

$2mF_o-DF_c$ (at 0.7 rmsd) in gray
 mF_o-DF_c (at 3 rmsd) in purple (negative)
and green (positive)

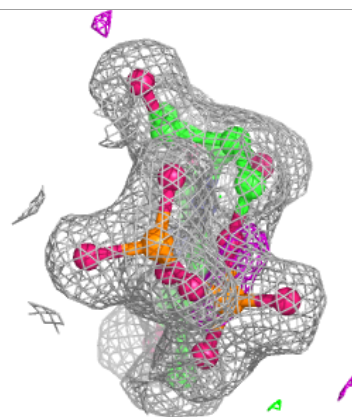
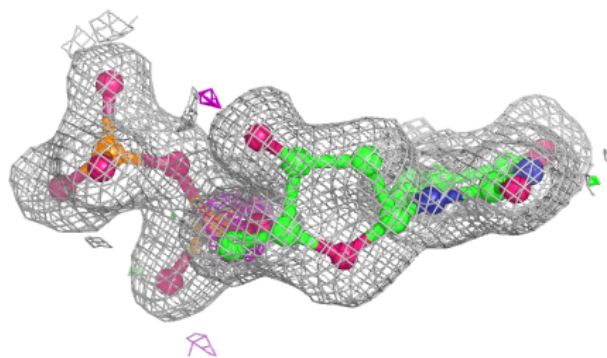
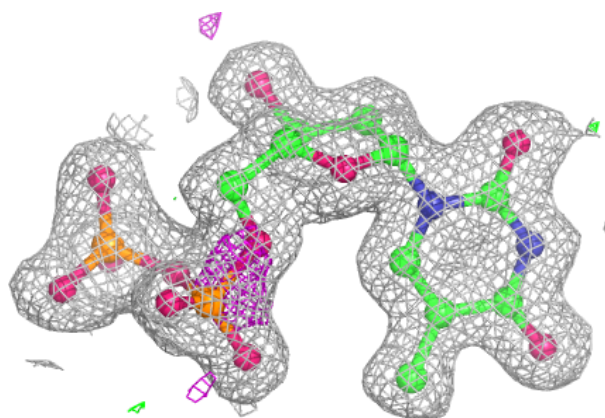


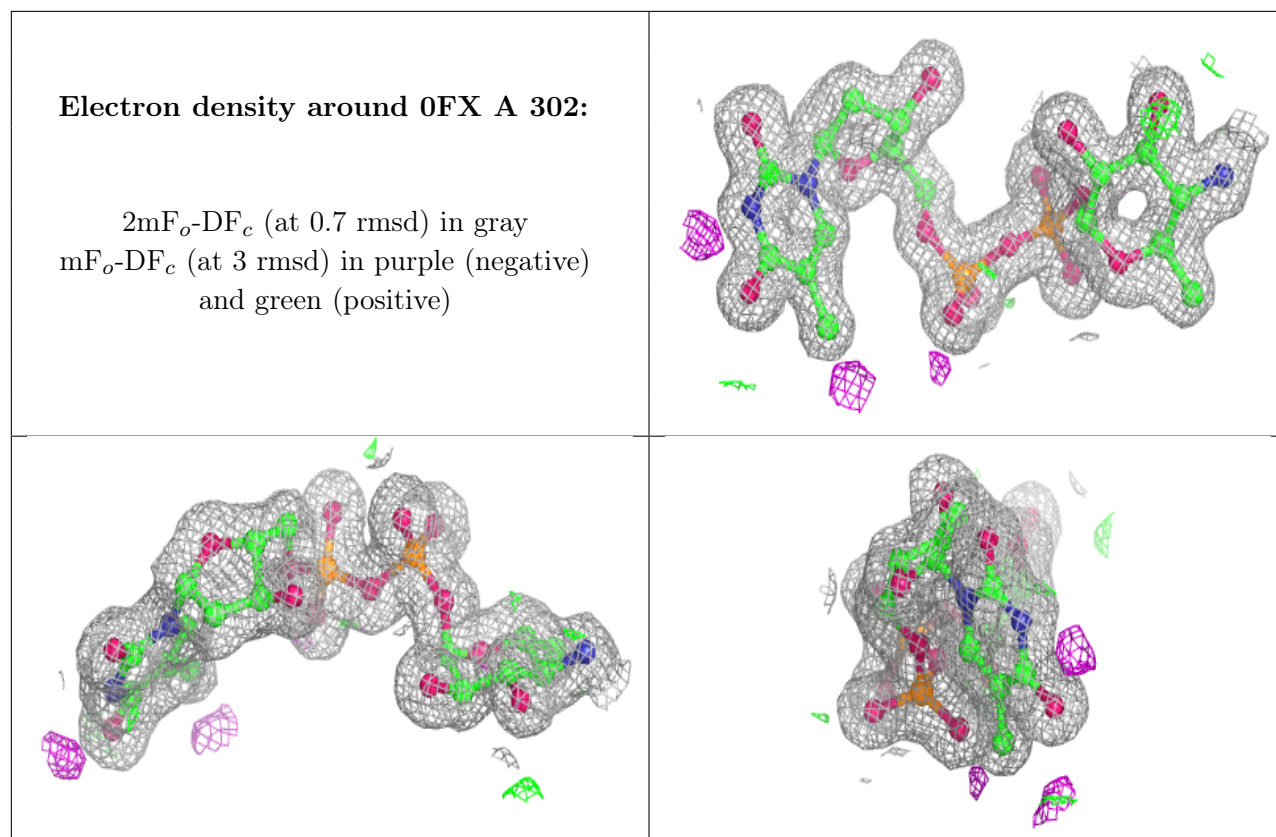
Electron density around EP1 A 308:

$2mF_o-DF_c$ (at 0.7 rmsd) in gray
 mF_o-DF_c (at 3 rmsd) in purple (negative)
and green (positive)

**Electron density around TYD B 301:**

$2mF_o-DF_c$ (at 0.7 rmsd) in gray
 mF_o-DF_c (at 3 rmsd) in purple (negative)
and green (positive)





6.5 Other polymers [i](#)

There are no such residues in this entry.