



Full wwPDB X-ray Structure Validation Report ⓘ

Mar 2, 2024 – 09:41 PM EST

PDB ID : 5VXG
Title : Crystal structure of Xanthomonas campestris OleA E117Q bound with Cerulenin
Authors : Jensen, M.R.; Wilmot, C.M.
Deposited on : 2017-05-23
Resolution : 2.07 Å (reported)

This is a Full wwPDB X-ray Structure Validation Report for a publicly released PDB entry.

We welcome your comments at validation@mail.wwpdb.org

A user guide is available at

<https://www.wwpdb.org/validation/2017/XrayValidationReportHelp>

with specific help available everywhere you see the ⓘ symbol.

The types of validation reports are described at

<http://www.wwpdb.org/validation/2017/FAQs#types>.

The following versions of software and data (see [references ⓘ](#)) were used in the production of this report:

MolProbity : 4.02b-467
Mogul : 1.8.5 (274361), CSD as541be (2020)
Xtriage (Phenix) : 1.13
EDS : 2.36
Percentile statistics : 20191225.v01 (using entries in the PDB archive December 25th 2019)
Refmac : 5.8.0158
CCP4 : 7.0.044 (Gargrove)
Ideal geometry (proteins) : Engh & Huber (2001)
Ideal geometry (DNA, RNA) : Parkinson et al. (1996)
Validation Pipeline (wwPDB-VP) : 2.36

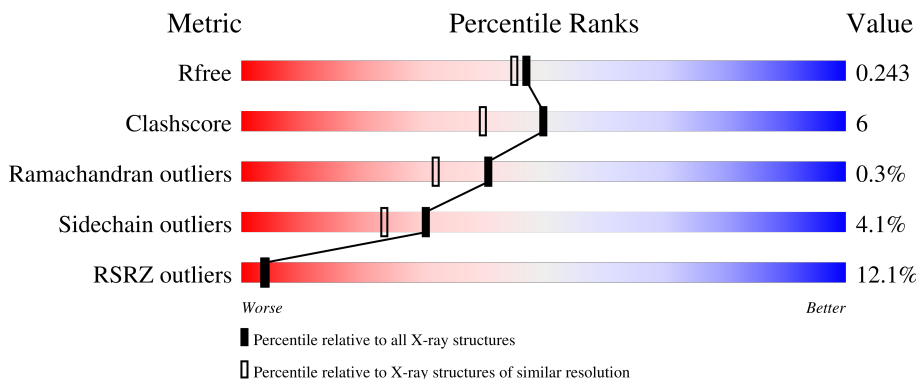
1 Overall quality at a glance

The following experimental techniques were used to determine the structure:

X-RAY DIFFRACTION

The reported resolution of this entry is 2.07 Å.

Percentile scores (ranging between 0-100) for global validation metrics of the entry are shown in the following graphic. The table shows the number of entries on which the scores are based.



Metric	Whole archive (#Entries)	Similar resolution (#Entries, resolution range(Å))
R_{free}	130704	2684 (2.08-2.04)
Clashscore	141614	2801 (2.08-2.04)
Ramachandran outliers	138981	2768 (2.08-2.04)
Sidechain outliers	138945	2768 (2.08-2.04)
RSRZ outliers	127900	2646 (2.08-2.04)

The table below summarises the geometric issues observed across the polymeric chains and their fit to the electron density. The red, orange, yellow and green segments of the lower bar indicate the fraction of residues that contain outliers for ≥ 3 , 2, 1 and 0 types of geometric quality criteria respectively. A grey segment represents the fraction of residues that are not modelled. The numeric value for each fraction is indicated below the corresponding segment, with a dot representing fractions $\leq 5\%$. The upper red bar (where present) indicates the fraction of residues that have poor fit to the electron density. The numeric value is given above the bar.

Mol	Chain	Length	Quality of chain
1	A	358	

The following table lists non-polymeric compounds, carbohydrate monomers and non-standard residues in protein, DNA, RNA chains that are outliers for geometric or electron-density-fit criteria:

Mol	Type	Chain	Res	Chirality	Geometry	Clashes	Electron density
2	CER	A	401	-	-	X	-

2 Entry composition [i](#)

There are 4 unique types of molecules in this entry. The entry contains 2612 atoms, of which 0 are hydrogens and 0 are deuteriums.

In the tables below, the ZeroOcc column contains the number of atoms modelled with zero occupancy, the AltConf column contains the number of residues with at least one atom in alternate conformation and the Trace column contains the number of residues modelled with at most 2 atoms.

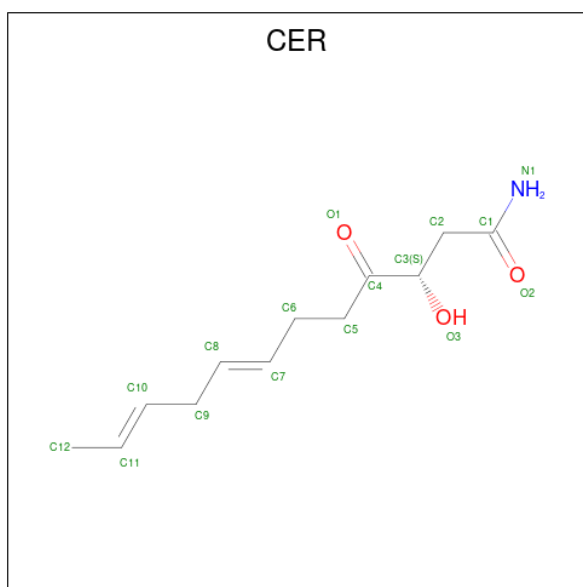
- Molecule 1 is a protein called 3-oxoacyl-[ACP] synthase III.

Mol	Chain	Residues	Atoms					ZeroOcc	AltConf	Trace
			Total	C	N	O	S			
1	A	331	2555	1608	451	482	14	0	6	0

There are 21 discrepancies between the modelled and reference sequences:

Chain	Residue	Modelled	Actual	Comment	Reference
A	1	MET	-	initiating methionine	UNP Q8PDX2
A	2	GLY	-	expression tag	UNP Q8PDX2
A	3	SER	-	expression tag	UNP Q8PDX2
A	4	SER	-	expression tag	UNP Q8PDX2
A	5	HIS	-	expression tag	UNP Q8PDX2
A	6	HIS	-	expression tag	UNP Q8PDX2
A	7	HIS	-	expression tag	UNP Q8PDX2
A	8	HIS	-	expression tag	UNP Q8PDX2
A	9	HIS	-	expression tag	UNP Q8PDX2
A	10	HIS	-	expression tag	UNP Q8PDX2
A	11	SER	-	expression tag	UNP Q8PDX2
A	12	SER	-	expression tag	UNP Q8PDX2
A	13	GLY	-	expression tag	UNP Q8PDX2
A	14	LEU	-	expression tag	UNP Q8PDX2
A	15	VAL	-	expression tag	UNP Q8PDX2
A	16	PRO	-	expression tag	UNP Q8PDX2
A	17	ARG	-	expression tag	UNP Q8PDX2
A	18	GLY	-	expression tag	UNP Q8PDX2
A	19	SER	-	expression tag	UNP Q8PDX2
A	20	HIS	-	expression tag	UNP Q8PDX2
A	117	GLN	GLU	engineered mutation	UNP Q8PDX2

- Molecule 2 is (2S, 3R)-3-HYDROXY-4-OXO-7,10-TRANS,TRANS-DODECADIENAMIDE (three-letter code: CER) (formula: C₁₂H₁₉NO₃).



Mol	Chain	Residues	Atoms				ZeroOcc	AltConf
			Total	C	N	O		
2	A	1	16	12	1	3	0	0

- Molecule 3 is MANGANESE (II) ION (three-letter code: MN) (formula: Mn).

Mol	Chain	Residues	Atoms		ZeroOcc	AltConf
			Total	Mn		
3	A	1	1	1	0	0

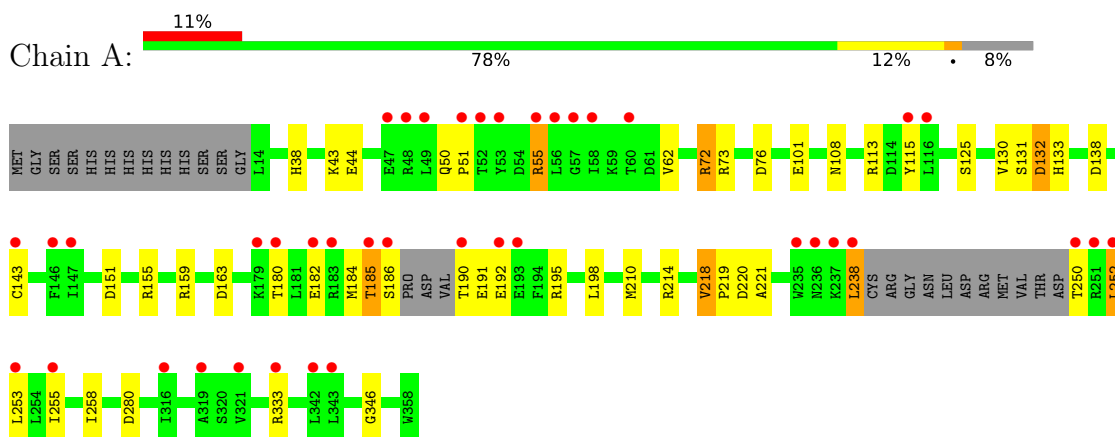
- Molecule 4 is water.

Mol	Chain	Residues	Atoms		ZeroOcc	AltConf
			Total	O		
4	A	40	40	40	0	0

3 Residue-property plots [i](#)

These plots are drawn for all protein, RNA, DNA and oligosaccharide chains in the entry. The first graphic for a chain summarises the proportions of the various outlier classes displayed in the second graphic. The second graphic shows the sequence view annotated by issues in geometry and electron density. Residues are color-coded according to the number of geometric quality criteria for which they contain at least one outlier: green = 0, yellow = 1, orange = 2 and red = 3 or more. A red dot above a residue indicates a poor fit to the electron density ($RSRZ > 2$). Stretches of 2 or more consecutive residues without any outlier are shown as a green connector. Residues present in the sample, but not in the model, are shown in grey.

- Molecule 1: 3-oxoacyl-[ACP] synthase III



4 Data and refinement statistics i

Property	Value	Source
Space group	P 32 2 1	Depositor
Cell constants a, b, c, α , β , γ	90.26Å 90.26Å 69.42Å 90.00° 90.00° 120.00°	Depositor
Resolution (Å)	29.55 – 2.07 29.55 – 2.07	Depositor EDS
% Data completeness (in resolution range)	99.7 (29.55-2.07) 99.7 (29.55-2.07)	Depositor EDS
R_{merge}	0.08	Depositor
R_{sym}	(Not available)	Depositor
$\langle I/\sigma(I) \rangle$ ¹	1.13 (at 2.06Å)	Xtrriage
Refinement program	REFMAC 5.8.0158	Depositor
R, R_{free}	0.177 , 0.244 0.188 , 0.243	Depositor DCC
R_{free} test set	1016 reflections (5.02%)	wwPDB-VP
Wilson B-factor (Å ²)	32.2	Xtrriage
Anisotropy	0.039	Xtrriage
Bulk solvent k_{sol} (e/Å ³), B_{sol} (Å ²)	0.37 , 51.4	EDS
L-test for twinning ²	$\langle L \rangle = 0.49$, $\langle L^2 \rangle = 0.33$	Xtrriage
Estimated twinning fraction	0.028 for -h,-k,l	Xtrriage
F_o, F_c correlation	0.96	EDS
Total number of atoms	2612	wwPDB-VP
Average B, all atoms (Å ²)	44.0	wwPDB-VP

Xtrriage's analysis on translational NCS is as follows: *The largest off-origin peak in the Patterson function is 4.23% of the height of the origin peak. No significant pseudotranslation is detected.*

¹Intensities estimated from amplitudes.

²Theoretical values of $\langle |L| \rangle$, $\langle L^2 \rangle$ for acentric reflections are 0.5, 0.333 respectively for untwinned datasets, and 0.375, 0.2 for perfectly twinned datasets.

5 Model quality [i](#)

5.1 Standard geometry [i](#)

Bond lengths and bond angles in the following residue types are not validated in this section: MN, CER

The Z score for a bond length (or angle) is the number of standard deviations the observed value is removed from the expected value. A bond length (or angle) with $|Z| > 5$ is considered an outlier worth inspection. RMSZ is the root-mean-square of all Z scores of the bond lengths (or angles).

Mol	Chain	Bond lengths		Bond angles	
		RMSZ	# Z >5	RMSZ	# Z >5
1	A	1.07	1/2596 (0.0%)	1.10	11/3513 (0.3%)

All (1) bond length outliers are listed below:

Mol	Chain	Res	Type	Atoms	Z	Observed(Å)	Ideal(Å)
1	A	101	GLU	CD-OE1	6.66	1.32	1.25

All (11) bond angle outliers are listed below:

Mol	Chain	Res	Type	Atoms	Z	Observed(°)	Ideal(°)
1	A	132	ASP	CB-CG-OD1	7.84	125.36	118.30
1	A	73	ARG	NE-CZ-NH1	7.48	124.04	120.30
1	A	333	ARG	NE-CZ-NH1	6.97	123.78	120.30
1	A	280	ASP	CB-CG-OD2	6.39	124.05	118.30
1	A	159	ARG	NE-CZ-NH2	6.13	123.36	120.30
1	A	163	ASP	CB-CG-OD1	6.08	123.77	118.30
1	A	210	MET	CG-SD-CE	5.92	109.68	100.20
1	A	72	ARG	NE-CZ-NH1	5.37	122.98	120.30
1	A	214	ARG	NE-CZ-NH1	5.23	122.92	120.30
1	A	76	ASP	CB-CG-OD1	-5.20	113.62	118.30
1	A	252	LEU	CB-CA-C	5.04	119.77	110.20

There are no chirality outliers.

There are no planarity outliers.

5.2 Too-close contacts [i](#)

In the following table, the Non-H and H(model) columns list the number of non-hydrogen atoms and hydrogen atoms in the chain respectively. The H(added) column lists the number of hydrogen

atoms added and optimized by MolProbity. The Clashes column lists the number of clashes within the asymmetric unit, whereas Symm-Clashes lists symmetry-related clashes.

Mol	Chain	Non-H	H(model)	H(added)	Clashes	Symm-Clashes
1	A	2555	0	2590	30	0
2	A	16	0	19	7	0
3	A	1	0	0	0	0
4	A	40	0	0	1	0
All	All	2612	0	2609	30	0

The all-atom clashscore is defined as the number of clashes found per 1000 atoms (including hydrogen atoms). The all-atom clashscore for this structure is 6.

All (30) close contacts within the same asymmetric unit are listed below, sorted by their clash magnitude.

Atom-1	Atom-2	Interatomic distance (Å)	Clash overlap (Å)
1:A:143[A]:CYS:SG	2:A:401:CER:H21	1.40	1.61
1:A:143[A]:CYS:SG	2:A:401:CER:C2	2.27	1.23
1:A:143[A]:CYS:HG	2:A:401:CER:H21	1.03	0.83
1:A:143[A]:CYS:SG	2:A:401:CER:C1	2.68	0.82
1:A:151[B]:ASP:OD2	1:A:155:ARG:NH2	2.23	0.71
1:A:184:MET:O	1:A:185:THR:HG23	1.91	0.70
1:A:113:ARG:NE	1:A:115:TYR:O	2.37	0.58
1:A:252:LEU:HA	1:A:255:ILE:HD12	1.85	0.57
1:A:238:LEU:HB2	1:A:253:LEU:HD12	1.88	0.55
1:A:62:VAL:HG11	1:A:198:LEU:HD22	1.88	0.55
1:A:132:ASP:OD1	1:A:133[A]:HIS:ND1	2.39	0.54
1:A:62:VAL:HG11	1:A:198:LEU:HD13	1.89	0.53
1:A:253:LEU:HD21	2:A:401:CER:C7	2.39	0.52
1:A:180:THR:O	1:A:184:MET:HG3	2.11	0.51
1:A:143[B]:CYS:HB3	2:A:401:CER:H21	1.94	0.49
1:A:218[B]:VAL:HG12	1:A:221:ALA:HB2	1.96	0.48
1:A:219:PRO:O	1:A:220:ASP:HB2	2.14	0.48
1:A:62:VAL:CG1	1:A:198:LEU:HD22	2.43	0.47
1:A:43:LYS:HG3	1:A:44:GLU:N	2.30	0.47
1:A:50:GLN:HB3	1:A:51:PRO:HD3	1.96	0.47
1:A:143[B]:CYS:HG	1:A:346:GLY:HA2	1.78	0.46
1:A:195:ARG:HA	1:A:198:LEU:HD12	1.98	0.46
1:A:125:SER:HB3	1:A:130:VAL:CG2	2.47	0.44
1:A:108:ASN:HB3	1:A:138:ASP:OD1	2.17	0.44
1:A:143[A]:CYS:HG	2:A:401:CER:C2	1.97	0.43
1:A:191:GLU:O	1:A:195:ARG:HG3	2.19	0.43
1:A:38:HIS:CE1	4:A:501:HOH:O	2.71	0.42

Continued on next page...

Continued from previous page...

Atom-1	Atom-2	Interatomic distance (Å)	Clash overlap (Å)
1:A:238:LEU:CB	1:A:253:LEU:HD12	2.49	0.41
1:A:131:SER:OG	1:A:133[B]:HIS:CE1	2.74	0.41
1:A:125:SER:HB3	1:A:130:VAL:HG21	2.03	0.40

There are no symmetry-related clashes.

5.3 Torsion angles [i](#)

5.3.1 Protein backbone [i](#)

In the following table, the Percentiles column shows the percent Ramachandran outliers of the chain as a percentile score with respect to all X-ray entries followed by that with respect to entries of similar resolution.

The Analysed column shows the number of residues for which the backbone conformation was analysed, and the total number of residues.

Mol	Chain	Analysed	Favoured	Allowed	Outliers	Percentiles
1	A	331/358 (92%)	317 (96%)	13 (4%)	1 (0%)	41 32

All (1) Ramachandran outliers are listed below:

Mol	Chain	Res	Type
1	A	55	ARG

5.3.2 Protein sidechains [i](#)

In the following table, the Percentiles column shows the percent sidechain outliers of the chain as a percentile score with respect to all X-ray entries followed by that with respect to entries of similar resolution.

The Analysed column shows the number of residues for which the sidechain conformation was analysed, and the total number of residues.

Mol	Chain	Analysed	Rotameric	Outliers	Percentiles
1	A	272/290 (94%)	260 (96%)	12 (4%)	28 21

All (12) residues with a non-rotameric sidechain are listed below:

Mol	Chain	Res	Type
1	A	55	ARG
1	A	72	ARG
1	A	182	GLU
1	A	185	THR
1	A	186	SER
1	A	190	THR
1	A	192	GLU
1	A	218[A]	VAL
1	A	218[B]	VAL
1	A	238	LEU
1	A	250	THR
1	A	258	ILE

Sometimes sidechains can be flipped to improve hydrogen bonding and reduce clashes. All (2) such sidechains are listed below:

Mol	Chain	Res	Type
1	A	20	HIS
1	A	50	GLN

5.3.3 RNA [i](#)

There are no RNA molecules in this entry.

5.4 Non-standard residues in protein, DNA, RNA chains [i](#)

There are no non-standard protein/DNA/RNA residues in this entry.

5.5 Carbohydrates [i](#)

There are no monosaccharides in this entry.

5.6 Ligand geometry [i](#)

Of 2 ligands modelled in this entry, 1 is monoatomic - leaving 1 for Mogul analysis.

In the following table, the Counts columns list the number of bonds (or angles) for which Mogul statistics could be retrieved, the number of bonds (or angles) that are observed in the model and the number of bonds (or angles) that are defined in the Chemical Component Dictionary. The Link column lists molecule types, if any, to which the group is linked. The Z score for a bond length (or angle) is the number of standard deviations the observed value is removed from the

expected value. A bond length (or angle) with $|Z| > 2$ is considered an outlier worth inspection. RMSZ is the root-mean-square of all Z scores of the bond lengths (or angles).

Mol	Type	Chain	Res	Link	Bond lengths			Bond angles		
					Counts	RMSZ	$\# Z > 2$	Counts	RMSZ	$\# Z > 2$
2	CER	A	401	-	14,15,15	0.58	0	13,17,17	1.35	3 (23%)

In the following table, the Chirals column lists the number of chiral outliers, the number of chiral centers analysed, the number of these observed in the model and the number defined in the Chemical Component Dictionary. Similar counts are reported in the Torsion and Rings columns. '-' means no outliers of that kind were identified.

Mol	Type	Chain	Res	Link	Chirals	Torsions	Rings
2	CER	A	401	-	-	6/16/16/16	-

There are no bond length outliers.

All (3) bond angle outliers are listed below:

Mol	Chain	Res	Type	Atoms	Z	Observed($^{\circ}$)	Ideal($^{\circ}$)
2	A	401	CER	O3-C3-C2	-2.66	103.50	110.05
2	A	401	CER	C5-C6-C7	-2.34	107.53	112.59
2	A	401	CER	C2-C1-N1	2.34	121.84	116.21

There are no chirality outliers.

All (6) torsion outliers are listed below:

Mol	Chain	Res	Type	Atoms
2	A	401	CER	O3-C3-C4-O1
2	A	401	CER	O3-C3-C4-C5
2	A	401	CER	N1-C1-C2-C3
2	A	401	CER	O2-C1-C2-C3
2	A	401	CER	C7-C8-C9-C10
2	A	401	CER	C11-C10-C9-C8

There are no ring outliers.

1 monomer is involved in 7 short contacts:

Mol	Chain	Res	Type	Clashes	Symm-Clashes
2	A	401	CER	7	0

5.7 Other polymers [i](#)

There are no such residues in this entry.

5.8 Polymer linkage issues [i](#)

There are no chain breaks in this entry.

6 Fit of model and data

6.1 Protein, DNA and RNA chains

In the following table, the column labelled ‘#RSRZ> 2’ contains the number (and percentage) of RSRZ outliers, followed by percent RSRZ outliers for the chain as percentile scores relative to all X-ray entries and entries of similar resolution. The OWAB column contains the minimum, median, 95th percentile and maximum values of the occupancy-weighted average B-factor per residue. The column labelled ‘Q< 0.9’ lists the number of (and percentage) of residues with an average occupancy less than 0.9.

Mol	Chain	Analysed	<RSRZ>	#RSRZ>2	OWAB(Å ²)	Q<0.9
1	A	331/358 (92%)	0.52	40 (12%) 4 4	19, 38, 88, 112	0

All (40) RSRZ outliers are listed below:

Mol	Chain	Res	Type	RSRZ
1	A	55	ARG	7.4
1	A	252	LEU	6.6
1	A	52	THR	6.3
1	A	56	LEU	5.9
1	A	116	LEU	5.6
1	A	49	LEU	5.5
1	A	57	GLY	4.9
1	A	51	PRO	4.8
1	A	183	ARG	4.7
1	A	192	GLU	4.7
1	A	182	GLU	4.1
1	A	53	TYR	4.1
1	A	190	THR	4.1
1	A	333	ARG	3.8
1	A	235	TRP	3.8
1	A	193	GLU	3.6
1	A	115	TYR	3.5
1	A	185	THR	3.3
1	A	48	ARG	3.1
1	A	251	ARG	3.1
1	A	250	THR	3.0
1	A	253	LEU	3.0
1	A	58	ILE	2.7
1	A	179	LYS	2.7
1	A	342	LEU	2.7
1	A	236	ASN	2.6
1	A	147	ILE	2.6

Continued on next page...

Continued from previous page...

Mol	Chain	Res	Type	RSRZ
1	A	238	LEU	2.6
1	A	47	GLU	2.5
1	A	186	SER	2.5
1	A	319	ALA	2.4
1	A	343	LEU	2.3
1	A	180	THR	2.3
1	A	60	THR	2.2
1	A	237	LYS	2.2
1	A	255	ILE	2.1
1	A	321	VAL	2.1
1	A	146	PHE	2.1
1	A	316	ILE	2.1
1	A	143[A]	CYS	2.0

6.2 Non-standard residues in protein, DNA, RNA chains [i](#)

There are no non-standard protein/DNA/RNA residues in this entry.

6.3 Carbohydrates [i](#)

There are no monosaccharides in this entry.

6.4 Ligands [i](#)

In the following table, the Atoms column lists the number of modelled atoms in the group and the number defined in the chemical component dictionary. The B-factors column lists the minimum, median, 95th percentile and maximum values of B factors of atoms in the group. The column labelled 'Q< 0.9' lists the number of atoms with occupancy less than 0.9.

Mol	Type	Chain	Res	Atoms	RSCC	RSR	B-factors(Å ²)	Q<0.9
2	CER	A	401	16/16	0.83	0.38	32,50,58,59	16
3	MN	A	402	1/1	0.98	0.05	40,40,40,40	0

6.5 Other polymers [i](#)

There are no such residues in this entry.