



Full wwPDB X-ray Structure Validation Report ⓘ

Oct 5, 2023 – 07:09 AM EDT

PDB ID : 6VS6
Title : Mycobacterium tuberculosis dihydrofolate reductase in complex with 3-(furan-2-yl)-1-methyl-1H-pyrazole-5-carboxylic acid (fragment 2)
Authors : Ribeiro, J.A.; Dias, M.V.B.
Deposited on : 2020-02-10
Resolution : 1.85 Å(reported)

This is a Full wwPDB X-ray Structure Validation Report for a publicly released PDB entry.

We welcome your comments at validation@mail.wwpdb.org

A user guide is available at

<https://www.wwpdb.org/validation/2017/XrayValidationReportHelp>

with specific help available everywhere you see the ⓘ symbol.

The types of validation reports are described at

<http://www.wwpdb.org/validation/2017/FAQs#types>.

The following versions of software and data (see [references ⓘ](#)) were used in the production of this report:

MolProbity : **FAILED**
Mogul : 1.8.5 (274361), CSD as541be (2020)
Xtrriage (Phenix) : 1.13
EDS : **FAILED**
buster-report : 1.1.7 (2018)
Percentile statistics : 20191225.v01 (using entries in the PDB archive December 25th 2019)
Ideal geometry (proteins) : Engh & Huber (2001)
Ideal geometry (DNA, RNA) : Parkinson et al. (1996)
Validation Pipeline (wwPDB-VP) : 2.35.1

1 Overall quality at a glance

The following experimental techniques were used to determine the structure:

X-RAY DIFFRACTION

The reported resolution of this entry is 1.85 Å.

There are no overall percentile quality scores available for this entry.

MolProbity and EDS failed to run properly - the sequence quality summary graphics cannot be shown.

2 Entry composition [i](#)

There are 6 unique types of molecules in this entry. The entry contains 2902 atoms, of which 0 are hydrogens and 0 are deuteriums.

In the tables below, the ZeroOcc column contains the number of atoms modelled with zero occupancy, the AltConf column contains the number of residues with at least one atom in alternate conformation and the Trace column contains the number of residues modelled with at most 2 atoms.

- Molecule 1 is a protein called Dihydrofolate reductase.

Mol	Chain	Residues	Atoms					ZeroOcc	AltConf	Trace
			Total	C	N	O	S			
1	A	159	Total	C	N	O	S	0	0	0
			1244	783	228	228	5			
1	B	159	Total	C	N	O	S	0	2	0
			1248	786	227	230	5			

- Molecule 2 is NADPH DIHYDRO-NICOTINAMIDE-ADENINE-DINUCLEOTIDE PHOSPHATE (three-letter code: NDP) (formula: C₂₁H₃₀N₇O₁₇P₃).

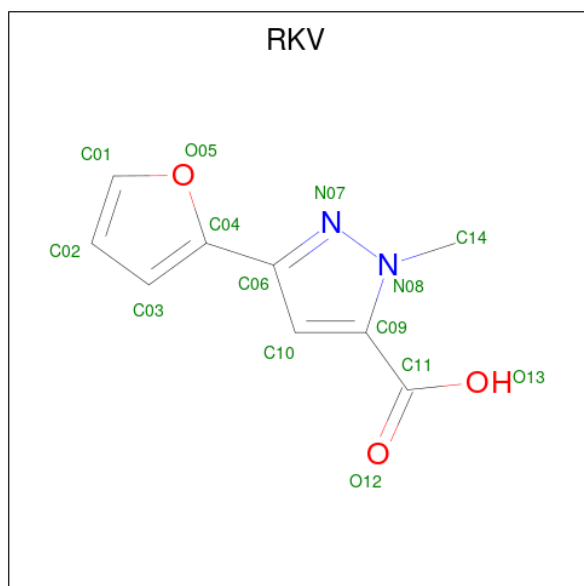


Mol	Chain	Residues	Atoms					ZeroOcc	AltConf
			Total	C	N	O	P		
2	A	1	Total	C	N	O	P	0	0
			48	21	7	17	3		
2	B	1	Total	C	N	O	P	0	0
			48	21	7	17	3		

- Molecule 3 is COBALT (II) ION (three-letter code: CO) (formula: Co).

Mol	Chain	Residues	Atoms		ZeroOcc	AltConf
3	A	2	Total	Co	0	0
			2	2		

- Molecule 4 is 3-(furan-2-yl)-1-methyl-1H-pyrazole-5-carboxylic acid (three-letter code: RKV) (formula: C₉H₈N₂O₃) (labeled as "Ligand of Interest" by depositor).



Mol	Chain	Residues	Atoms				ZeroOcc	AltConf
4	A	1	Total	C	N	O	0	0
			14	9	2	3		
4	B	1	Total	C	N	O	0	0
			14	9	2	3		

- Molecule 5 is PHOSPHATE ION (three-letter code: PO4) (formula: O₄P).



Mol	Chain	Residues	Atoms	ZeroOcc	AltConf
5	A	1	Total O P 5 4 1	0	0
5	B	1	Total O P 5 4 1	0	0

- Molecule 6 is water.

Mol	Chain	Residues	Atoms	ZeroOcc	AltConf
6	A	122	Total O 122 122	0	0
6	B	152	Total O 152 152	0	0

MolProbity and EDS failed to run properly - this section is therefore empty.

3 Data and refinement statistics

EDS failed to run properly - this section is therefore incomplete.

Property	Value	Source
Space group	P 21 21 21	Depositor
Cell constants a, b, c, α , β , γ	61.16Å 70.58Å 71.43Å 90.00° 90.00° 90.00°	Depositor
Resolution (Å)	46.46 – 1.85	Depositor
% Data completeness (in resolution range)	98.9 (46.46-1.85)	Depositor
R_{merge}	0.14	Depositor
R_{sym}	(Not available)	Depositor
$\langle I/\sigma(I) \rangle$ ¹	1.50 (at 1.85Å)	Xtrriage
Refinement program	PHENIX 1.14	Depositor
R, R_{free}	0.181 , 0.223	Depositor
Wilson B-factor (Å ²)	21.0	Xtrriage
Anisotropy	0.722	Xtrriage
L-test for twinning ²	$\langle L \rangle = 0.41$, $\langle L^2 \rangle = 0.24$	Xtrriage
Estimated twinning fraction	0.267 for -h,l,k	Xtrriage
Reported twinning fraction	0.280 for -h,l,k	Depositor
Outliers	0 of 26624 reflections	Xtrriage
Total number of atoms	2902	wwPDB-VP
Average B, all atoms (Å ²)	26.0	wwPDB-VP

Xtrriage's analysis on translational NCS is as follows: *The largest off-origin peak in the Patterson function is 5.92% of the height of the origin peak. No significant pseudotranslation is detected.*

¹Intensities estimated from amplitudes.

²Theoretical values of $\langle |L| \rangle$, $\langle L^2 \rangle$ for acentric reflections are 0.5, 0.333 respectively for untwinned datasets, and 0.375, 0.2 for perfectly twinned datasets.

4 Model quality [i](#)

4.1 Standard geometry [i](#)

MolProbity failed to run properly - this section is therefore empty.

4.2 Too-close contacts [i](#)

MolProbity failed to run properly - this section is therefore empty.

4.3 Torsion angles [i](#)

4.3.1 Protein backbone [i](#)

MolProbity failed to run properly - this section is therefore empty.

4.3.2 Protein sidechains [i](#)

MolProbity failed to run properly - this section is therefore empty.

4.3.3 RNA [i](#)

MolProbity failed to run properly - this section is therefore empty.

4.4 Non-standard residues in protein, DNA, RNA chains [i](#)

There are no non-standard protein/DNA/RNA residues in this entry.

4.5 Carbohydrates [i](#)

There are no monosaccharides in this entry.

4.6 Ligand geometry [i](#)

Of 8 ligands modelled in this entry, 2 are monoatomic - leaving 6 for Mogul analysis.

In the following table, the Counts columns list the number of bonds (or angles) for which Mogul statistics could be retrieved, the number of bonds (or angles) that are observed in the model and the number of bonds (or angles) that are defined in the Chemical Component Dictionary. The Link column lists molecule types, if any, to which the group is linked. The Z score for a bond

length (or angle) is the number of standard deviations the observed value is removed from the expected value. A bond length (or angle) with $|Z| > 2$ is considered an outlier worth inspection. RMSZ is the root-mean-square of all Z scores of the bond lengths (or angles).

Mol	Type	Chain	Res	Link	Bond lengths			Bond angles		
					Counts	RMSZ	# Z > 2	Counts	RMSZ	# Z > 2
4	RKV	A	204	-	10,15,15	1.70	2 (20%)	11,21,21	1.70	2 (18%)
2	NDP	B	201	-	45,52,52	2.20	4 (8%)	53,80,80	1.58	8 (15%)
5	PO4	A	205	-	4,4,4	0.96	0	6,6,6	0.34	0
5	PO4	B	203	-	4,4,4	0.92	0	6,6,6	0.43	0
4	RKV	B	202	-	10,15,15	1.65	3 (30%)	11,21,21	2.61	4 (36%)
2	NDP	A	201	-	45,52,52	2.07	5 (11%)	53,80,80	1.58	8 (15%)

In the following table, the Chirals column lists the number of chiral outliers, the number of chiral centers analysed, the number of these observed in the model and the number defined in the Chemical Component Dictionary. Similar counts are reported in the Torsion and Rings columns. '-' means no outliers of that kind were identified.

Mol	Type	Chain	Res	Link	Chirals	Torsions	Rings
2	NDP	B	201	-	-	5/30/77/77	0/5/5/5
4	RKV	B	202	-	-	0/2/8/8	0/2/2/2
4	RKV	A	204	-	-	1/2/8/8	0/2/2/2
2	NDP	A	201	-	-	2/30/77/77	0/5/5/5

All (14) bond length outliers are listed below:

Mol	Chain	Res	Type	Atoms	Z	Observed(Å)	Ideal(Å)
2	B	201	NDP	P2B-O2B	12.18	1.82	1.59
2	A	201	NDP	P2B-O2B	11.20	1.80	1.59
2	A	201	NDP	O2B-C2B	-3.42	1.31	1.44
2	A	201	NDP	PN-O5D	3.41	1.73	1.59
2	B	201	NDP	O2B-C2B	-3.03	1.33	1.44
2	B	201	NDP	PN-O5D	3.03	1.71	1.59
4	A	204	RKV	C09-N08	-2.72	1.31	1.36
2	A	201	NDP	C4A-N3A	2.52	1.39	1.35
4	B	202	RKV	C09-C11	2.46	1.53	1.51
2	B	201	NDP	C2A-N1A	2.42	1.38	1.33
4	B	202	RKV	C06-C04	2.25	1.54	1.49
4	B	202	RKV	C09-N08	-2.20	1.32	1.36
4	A	204	RKV	C06-C04	2.05	1.53	1.49
2	A	201	NDP	O4B-C4B	-2.05	1.40	1.45

All (22) bond angle outliers are listed below:

Mol	Chain	Res	Type	Atoms	Z	Observed(°)	Ideal(°)
4	B	202	RKV	C04-C06-N07	5.70	130.31	120.88
2	B	201	NDP	PN-O3-PA	-5.02	115.62	132.83
2	A	201	NDP	PN-O3-PA	-4.89	116.03	132.83
4	B	202	RKV	C10-C06-C04	-3.79	123.80	129.32
2	B	201	NDP	O2B-P2B-O1X	-3.71	95.07	109.39
2	A	201	NDP	O2B-P2B-O1X	-3.69	95.14	109.39
4	A	204	RKV	C04-C06-N07	3.68	126.97	120.88
2	B	201	NDP	O7N-C7N-C3N	2.85	126.26	120.90
2	A	201	NDP	O7N-C7N-C3N	2.84	126.25	120.90
2	A	201	NDP	O3X-P2B-O2X	2.64	117.72	107.64
2	B	201	NDP	O3X-P2B-O2X	2.63	117.69	107.64
2	A	201	NDP	PN-O5D-C5D	-2.52	106.89	121.68
4	B	202	RKV	C03-C02-C01	-2.44	104.22	112.92
2	A	201	NDP	PA-O5B-C5B	-2.40	107.61	121.68
2	B	201	NDP	PA-O5B-C5B	-2.35	107.91	121.68
2	B	201	NDP	C2A-N1A-C6A	-2.32	114.79	118.75
2	B	201	NDP	PN-O5D-C5D	-2.25	108.46	121.68
2	A	201	NDP	C2A-N1A-C6A	-2.23	114.94	118.75
4	A	204	RKV	C03-C02-C01	-2.21	105.05	112.92
4	B	202	RKV	C10-C06-N07	-2.17	105.87	109.88
2	A	201	NDP	O5D-PN-O1N	-2.16	100.62	109.07
2	B	201	NDP	O5D-PN-O1N	-2.09	100.89	109.07

There are no chirality outliers.

All (8) torsion outliers are listed below:

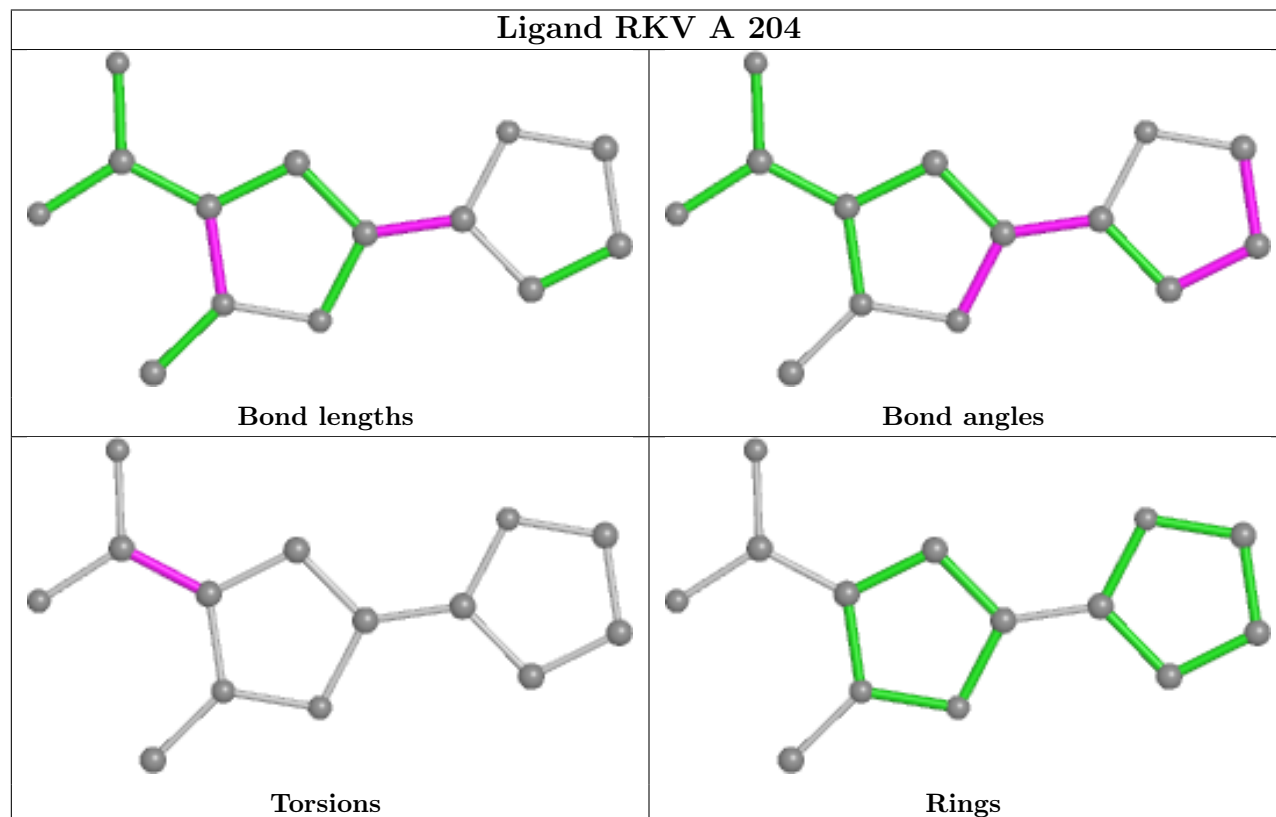
Mol	Chain	Res	Type	Atoms
2	B	201	NDP	PA-O3-PN-O5D
2	B	201	NDP	C5B-O5B-PA-O3
2	A	201	NDP	O4D-C1D-N1N-C2N
2	B	201	NDP	O4D-C1D-N1N-C2N
2	B	201	NDP	C2D-C1D-N1N-C2N
2	A	201	NDP	C2D-C1D-N1N-C2N
2	B	201	NDP	C5B-O5B-PA-O1A
4	A	204	RKV	N08-C09-C11-O12

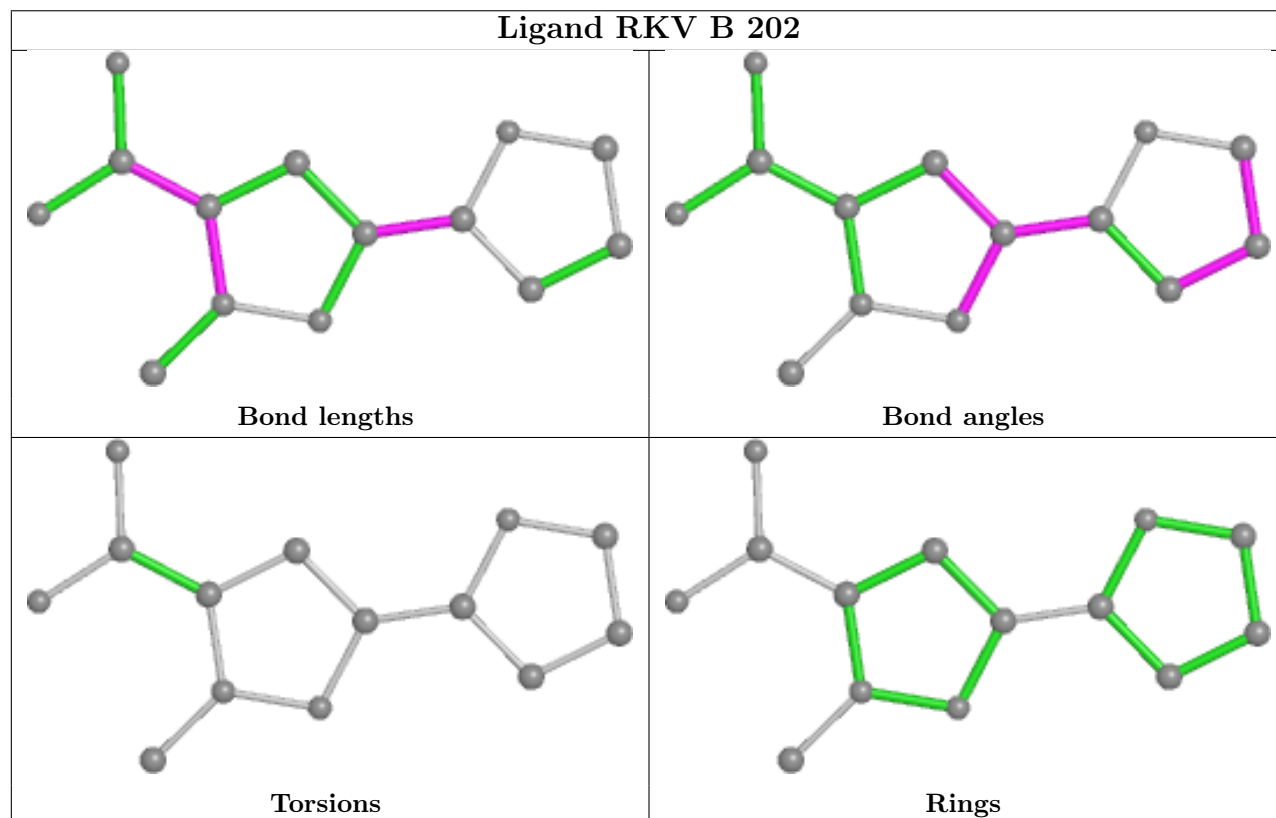
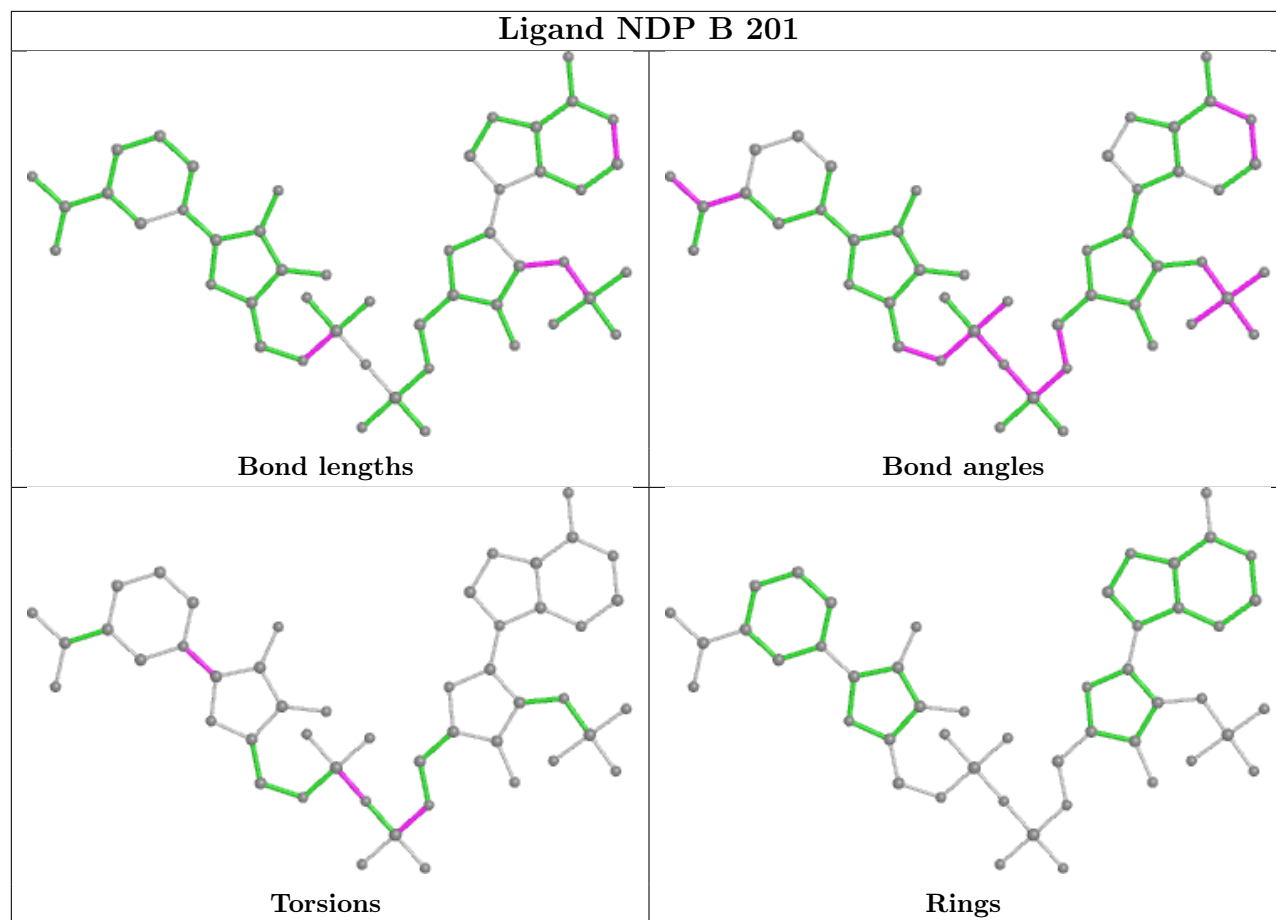
There are no ring outliers.

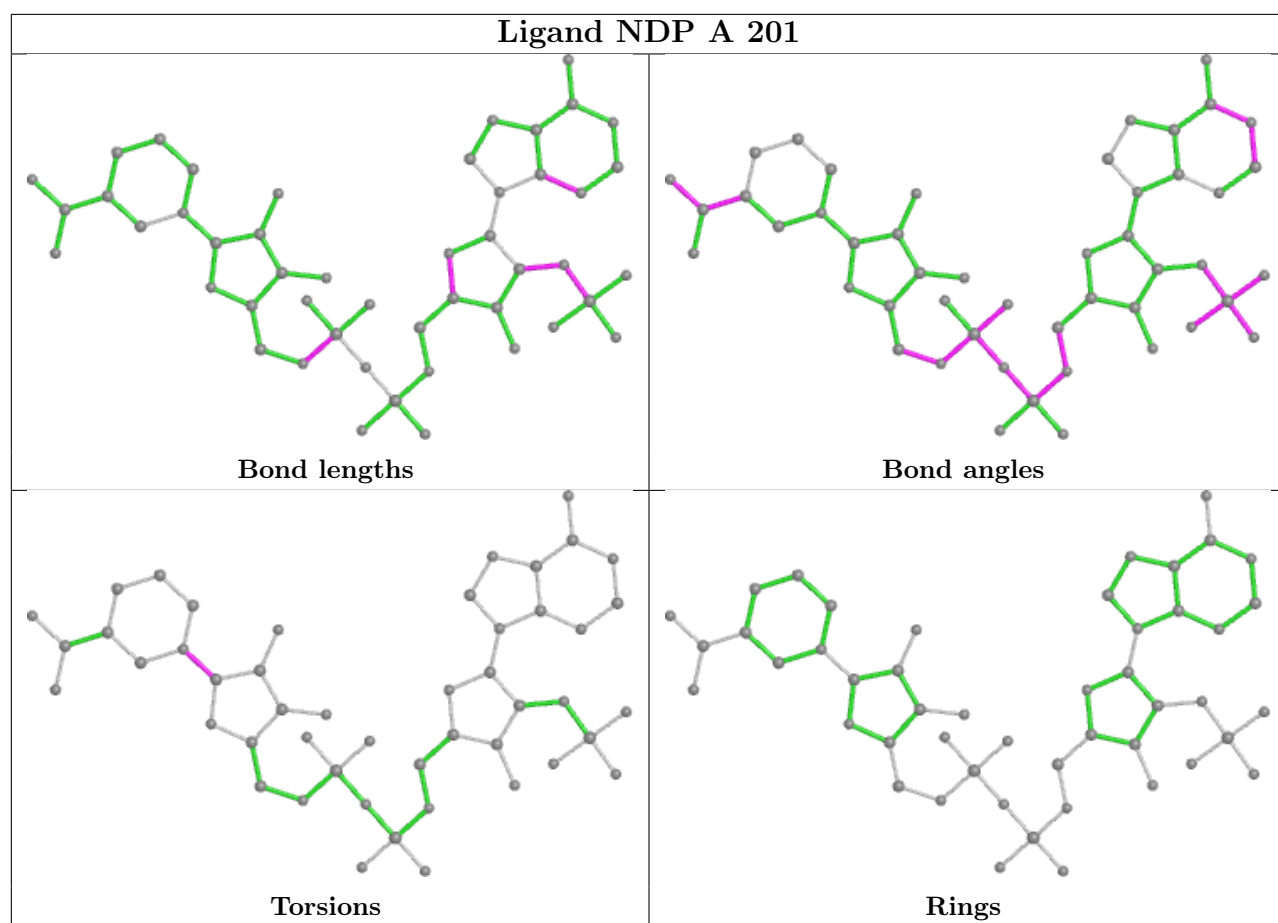
No monomer is involved in short contacts.

The following is a two-dimensional graphical depiction of Mogul quality analysis of bond lengths, bond angles, torsion angles, and ring geometry for all instances of the Ligand of Interest. In addition, ligands with molecular weight > 250 and outliers as shown on the validation Tables will also be included. For torsion angles, if less than 5% of the Mogul distribution of torsion angles is

within 10 degrees of the torsion angle in question, then that torsion angle is considered an outlier. Any bond that is central to one or more torsion angles identified as an outlier by Mogul will be highlighted in the graph. For rings, the root-mean-square deviation (RMSD) between the ring in question and similar rings identified by Mogul is calculated over all ring torsion angles. If the average RMSD is greater than 60 degrees and the minimal RMSD between the ring in question and any Mogul-identified rings is also greater than 60 degrees, then that ring is considered an outlier. The outliers are highlighted in purple. The color gray indicates Mogul did not find sufficient equivalents in the CSD to analyse the geometry.







4.7 Other polymers [\(i\)](#)

There are no such residues in this entry.

4.8 Polymer linkage issues [\(i\)](#)

There are no chain breaks in this entry.

5 Fit of model and data [i](#)

5.1 Protein, DNA and RNA chains [i](#)

EDS failed to run properly - this section is therefore empty.

5.2 Non-standard residues in protein, DNA, RNA chains [i](#)

EDS failed to run properly - this section is therefore empty.

5.3 Carbohydrates [i](#)

EDS failed to run properly - this section is therefore empty.

5.4 Ligands [i](#)

EDS failed to run properly - this section is therefore empty.

5.5 Other polymers [i](#)

EDS failed to run properly - this section is therefore empty.