



# Full wwPDB X-ray Structure Validation Report ⓘ

Oct 5, 2023 – 02:17 AM EDT

PDB ID : 6VOD  
Title : HIV-1 wild type protease with GRL-052-16A, a tricyclic cyclohexane fused to tetrahydrofuranofuran (CHF-THF) derivative as the P2 ligand  
Authors : Wang, Y.-F.; Agniswamy, J.; Weber, I.T.  
Deposited on : 2020-01-30  
Resolution : 1.25 Å(reported)

This is a Full wwPDB X-ray Structure Validation Report for a publicly released PDB entry.

We welcome your comments at [validation@mail.wwpdb.org](mailto:validation@mail.wwpdb.org)

A user guide is available at

<https://www.wwpdb.org/validation/2017/XrayValidationReportHelp>

with specific help available everywhere you see the ⓘ symbol.

The types of validation reports are described at

<http://www.wwpdb.org/validation/2017/FAQs#types>.

---

The following versions of software and data (see [references ⓘ](#)) were used in the production of this report:

MolProbity : **FAILED**  
Mogul : 1.8.5 (274361), CSD as541be (2020)  
Xtrriage (Phenix) : 1.13  
EDS : **FAILED**  
buster-report : 1.1.7 (2018)  
Percentile statistics : 20191225.v01 (using entries in the PDB archive December 25th 2019)  
Ideal geometry (proteins) : Engh & Huber (2001)  
Ideal geometry (DNA, RNA) : Parkinson et al. (1996)  
Validation Pipeline (wwPDB-VP) : 2.35.1

## 1 Overall quality at a glance

The following experimental techniques were used to determine the structure:

*X-RAY DIFFRACTION*

The reported resolution of this entry is 1.25 Å.

There are no overall percentile quality scores available for this entry.

MolProbity and EDS failed to run properly - the sequence quality summary graphics cannot be shown.

## 2 Entry composition [i](#)

There are 7 unique types of molecules in this entry. The entry contains 1986 atoms, of which 0 are hydrogens and 0 are deuteriums.

In the tables below, the ZeroOcc column contains the number of atoms modelled with zero occupancy, the AltConf column contains the number of residues with at least one atom in alternate conformation and the Trace column contains the number of residues modelled with at most 2 atoms.

- Molecule 1 is a protein called Protease.

Mol	Chain	Residues	Atoms					ZeroOcc	AltConf	Trace
			Total	C	N	O	S			
1	A	99	827	542	138	144	3	0	13	0
1	B	99	843	554	142	144	3	0	16	0

There are 10 discrepancies between the modelled and reference sequences:

Chain	Residue	Modelled	Actual	Comment	Reference
A	7	LYS	GLN	engineered mutation	UNP Q5RZ08
A	33	ILE	LEU	engineered mutation	UNP Q5RZ08
A	63	ILE	LEU	engineered mutation	UNP Q5RZ08
A	67	ALA	CYS	engineered mutation	UNP Q5RZ08
A	95	ALA	CYS	engineered mutation	UNP Q5RZ08
B	7	LYS	GLN	engineered mutation	UNP Q5RZ08
B	33	ILE	LEU	engineered mutation	UNP Q5RZ08
B	63	ILE	LEU	engineered mutation	UNP Q5RZ08
B	67	ALA	CYS	engineered mutation	UNP Q5RZ08
B	95	ALA	CYS	engineered mutation	UNP Q5RZ08

- Molecule 2 is SODIUM ION (three-letter code: NA) (formula: Na).

Mol	Chain	Residues	Atoms		ZeroOcc	AltConf
2	A	1	Total	Na	0	0
			1	1		

- Molecule 3 is CHLORIDE ION (three-letter code: CL) (formula: Cl).

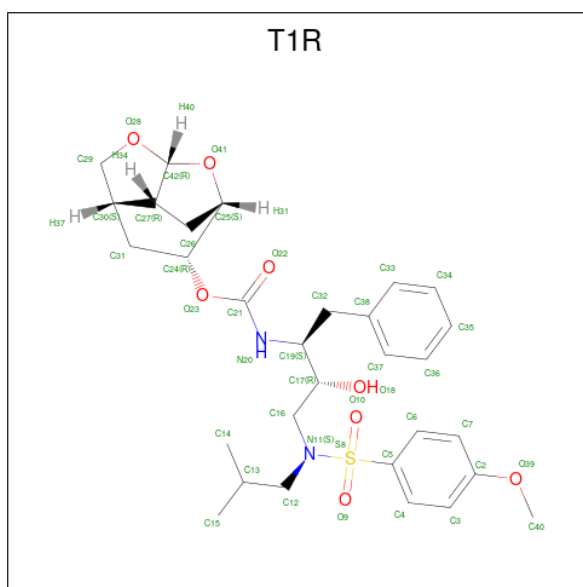
Mol	Chain	Residues	Atoms		ZeroOcc	AltConf
3	A	1	Total	Cl	0	0
			1	1		
3	B	1	Total	Cl	0	0
			1	1		

- Molecule 4 is GLYCEROL (three-letter code: GOL) (formula:  $C_3H_8O_3$ ).



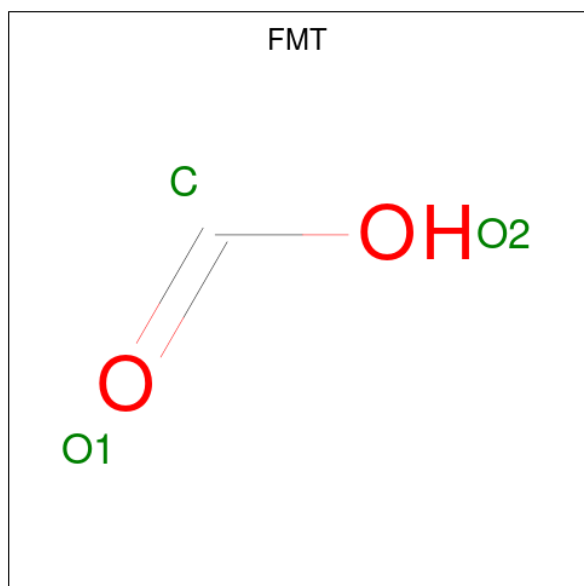
Mol	Chain	Residues	Atoms	ZeroOcc	AltConf
4	A	1	Total C O	0	1
			6 3 3		

- Molecule 5 is (1R,3aS,5R,6S,7aR)-octahydro-1,6-epoxy-2-benzofuran-5-yl [(2S,3R)-3-hydroxy-4-[(4-methoxyphenyl)sulfonyl](2-methylpropyl)amino]-1-phenylbutan-2-yl]carbamate (three-letter code: T1R) (formula:  $C_{30}H_{40}N_2O_8S$ ) (labeled as "Ligand of Interest" by depositor).



Mol	Chain	Residues	Atoms					ZeroOcc	AltConf
			Total	C	N	O	S		
5	B	1	82	60	4	16	2	0	1

- Molecule 6 is FORMIC ACID (three-letter code: FMT) (formula: CH<sub>2</sub>O<sub>2</sub>).



Mol	Chain	Residues	Atoms			ZeroOcc	AltConf
			Total	C	O		
6	B	1	3	1	2	0	0

- Molecule 7 is water.

Mol	Chain	Residues	Atoms	ZeroOcc	AltConf
7	A	113	Total O 113 113	0	24
7	B	109	Total O 109 109	0	17

MolProbity and EDS failed to run properly - this section is therefore empty.

### 3 Data and refinement statistics

EDS failed to run properly - this section is therefore incomplete.

Property	Value	Source
Space group	P 21 21 2	Depositor
Cell constants a, b, c, $\alpha$ , $\beta$ , $\gamma$	58.78Å 86.21Å 46.02Å 90.00° 90.00° 90.00°	Depositor
Resolution (Å)	33.43 – 1.25	Depositor
% Data completeness (in resolution range)	89.1 (33.43-1.25)	Depositor
$R_{merge}$	0.08	Depositor
$R_{sym}$	(Not available)	Depositor
$\langle I/\sigma(I) \rangle$ <sup>1</sup>	1.77 (at 1.25Å)	Xtrriage
Refinement program	REFMAC 5.8.0258	Depositor
R, $R_{free}$	0.159 , 0.185	Depositor
Wilson B-factor (Å <sup>2</sup> )	12.6	Xtrriage
Anisotropy	0.776	Xtrriage
L-test for twinning <sup>2</sup>	$\langle  L  \rangle = 0.49$ , $\langle L^2 \rangle = 0.32$	Xtrriage
Estimated twinning fraction	No twinning to report.	Xtrriage
Total number of atoms	1986	wwPDB-VP
Average B, all atoms (Å <sup>2</sup> )	16.0	wwPDB-VP

Xtrriage's analysis on translational NCS is as follows: *The largest off-origin peak in the Patterson function is 6.68% of the height of the origin peak. No significant pseudotranslation is detected.*

<sup>1</sup>Intensities estimated from amplitudes.

<sup>2</sup>Theoretical values of  $\langle |L| \rangle$ ,  $\langle L^2 \rangle$  for acentric reflections are 0.5, 0.333 respectively for untwinned datasets, and 0.375, 0.2 for perfectly twinned datasets.

## 4 Model quality [i](#)

### 4.1 Standard geometry [i](#)

MolProbity failed to run properly - this section is therefore empty.

### 4.2 Too-close contacts [i](#)

MolProbity failed to run properly - this section is therefore empty.

### 4.3 Torsion angles [i](#)

#### 4.3.1 Protein backbone [i](#)

MolProbity failed to run properly - this section is therefore empty.

#### 4.3.2 Protein sidechains [i](#)

MolProbity failed to run properly - this section is therefore empty.

#### 4.3.3 RNA [i](#)

MolProbity failed to run properly - this section is therefore empty.

### 4.4 Non-standard residues in protein, DNA, RNA chains [i](#)

There are no non-standard protein/DNA/RNA residues in this entry.

### 4.5 Carbohydrates [i](#)

There are no monosaccharides in this entry.

### 4.6 Ligand geometry [i](#)

Of 7 ligands modelled in this entry, 3 are monoatomic - leaving 4 for Mogul analysis.

In the following table, the Counts columns list the number of bonds (or angles) for which Mogul statistics could be retrieved, the number of bonds (or angles) that are observed in the model and the number of bonds (or angles) that are defined in the Chemical Component Dictionary. The Link column lists molecule types, if any, to which the group is linked. The Z score for a bond

length (or angle) is the number of standard deviations the observed value is removed from the expected value. A bond length (or angle) with  $|Z| > 2$  is considered an outlier worth inspection. RMSZ is the root-mean-square of all Z scores of the bond lengths (or angles).

Mol	Type	Chain	Res	Link	Bond lengths			Bond angles		
					Counts	RMSZ	# Z  > 2	Counts	RMSZ	# Z  > 2
5	T1R	B	201[A]	-	45,45,45	1.34	6 (13%)	60,65,65	1.82	14 (23%)
4	GOL	A	503[B]	-	5,5,5	0.51	0	5,5,5	0.87	0
5	T1R	B	201[B]	-	45,45,45	1.75	8 (17%)	60,65,65	2.53	21 (35%)
6	FMT	B	203	-	2,2,2	0.37	0	1,1,1	0.05	0

In the following table, the Chirals column lists the number of chiral outliers, the number of chiral centers analysed, the number of these observed in the model and the number defined in the Chemical Component Dictionary. Similar counts are reported in the Torsion and Rings columns. '-' means no outliers of that kind were identified.

Mol	Type	Chain	Res	Link	Chirals	Torsions	Rings
5	T1R	B	201[A]	-	-	1/38/67/67	0/6/5/5
4	GOL	A	503[B]	-	-	0/4/4/4	-
5	T1R	B	201[B]	-	-	2/38/67/67	0/6/5/5

All (14) bond length outliers are listed below:

Mol	Chain	Res	Type	Atoms	Z	Observed(Å)	Ideal(Å)
5	B	201[B]	T1R	C5-S8	-6.21	1.67	1.76
5	B	201[B]	T1R	O9-S8	-4.89	1.38	1.43
5	B	201[A]	T1R	O23-C21	3.52	1.41	1.35
5	B	201[B]	T1R	C16-N11	3.02	1.53	1.47
5	B	201[B]	T1R	S8-N11	2.98	1.67	1.63
5	B	201[B]	T1R	C21-N20	-2.97	1.27	1.34
5	B	201[A]	T1R	O22-C21	-2.78	1.16	1.21
5	B	201[B]	T1R	C4-C5	2.72	1.43	1.38
5	B	201[A]	T1R	C21-N20	-2.29	1.29	1.34
5	B	201[A]	T1R	O10-S8	2.27	1.46	1.43
5	B	201[A]	T1R	O41-C42	2.24	1.45	1.41
5	B	201[B]	T1R	C12-N11	2.12	1.51	1.47
5	B	201[A]	T1R	C16-N11	2.05	1.51	1.47
5	B	201[B]	T1R	C7-C2	2.02	1.42	1.38

All (35) bond angle outliers are listed below:

Mol	Chain	Res	Type	Atoms	Z	Observed(°)	Ideal(°)
5	B	201[B]	T1R	O10-S8-N11	-7.47	99.88	106.69
5	B	201[B]	T1R	O28-C42-C27	7.28	117.55	107.05

*Continued on next page...*



Continued from previous page...

Mol	Chain	Res	Type	Atoms	Z	Observed(°)	Ideal(°)
5	B	201[B]	T1R	O28-C29-C30	6.33	114.12	105.87
5	B	201[A]	T1R	O28-C29-C30	5.89	113.54	105.87
5	B	201[B]	T1R	C29-O28-C42	-5.87	99.01	106.86
5	B	201[B]	T1R	O23-C21-N20	4.73	116.46	110.32
5	B	201[B]	T1R	O23-C21-O22	-4.11	118.35	124.53
5	B	201[A]	T1R	C4-C5-S8	4.05	124.02	119.76
5	B	201[B]	T1R	C4-C5-S8	3.85	123.81	119.76
5	B	201[A]	T1R	C32-C19-N20	-3.73	104.64	110.07
5	B	201[A]	T1R	C26-C25-C24	-3.59	107.90	111.36
5	B	201[B]	T1R	C19-N20-C21	3.28	128.51	122.37
5	B	201[A]	T1R	C24-O23-C21	-3.13	112.97	117.03
5	B	201[B]	T1R	C31-C24-C25	-3.01	106.77	110.85
5	B	201[A]	T1R	C32-C19-C17	2.94	116.57	111.65
5	B	201[B]	T1R	C6-C5-S8	-2.93	116.67	119.76
5	B	201[B]	T1R	C32-C19-C17	2.74	116.23	111.65
5	B	201[B]	T1R	O18-C17-C19	-2.70	104.40	109.85
5	B	201[A]	T1R	C3-C4-C5	2.68	122.22	119.45
5	B	201[B]	T1R	C38-C32-C19	-2.66	108.72	113.33
5	B	201[B]	T1R	O9-S8-C5	2.46	111.16	108.05
5	B	201[B]	T1R	C29-C30-C27	2.42	104.50	101.59
5	B	201[B]	T1R	C24-O23-C21	-2.40	113.91	117.03
5	B	201[A]	T1R	O41-C25-C26	-2.39	99.65	104.74
5	B	201[B]	T1R	O41-C42-O28	-2.37	103.81	110.29
5	B	201[A]	T1R	O23-C21-O22	-2.30	121.07	124.53
5	B	201[A]	T1R	C3-C2-C7	-2.29	116.64	120.18
5	B	201[B]	T1R	C5-S8-N11	2.29	110.03	107.30
5	B	201[A]	T1R	O41-C42-C27	-2.14	103.49	106.75
5	B	201[A]	T1R	C6-C5-C4	-2.12	117.48	120.44
5	B	201[B]	T1R	C26-C25-C24	2.12	113.40	111.36
5	B	201[B]	T1R	C27-C26-C25	-2.07	98.28	104.01
5	B	201[A]	T1R	C15-C13-C12	-2.06	102.50	111.02
5	B	201[A]	T1R	C4-C3-C2	2.03	122.22	119.73
5	B	201[B]	T1R	C40-O39-C2	-2.01	113.16	117.51

There are no chirality outliers.

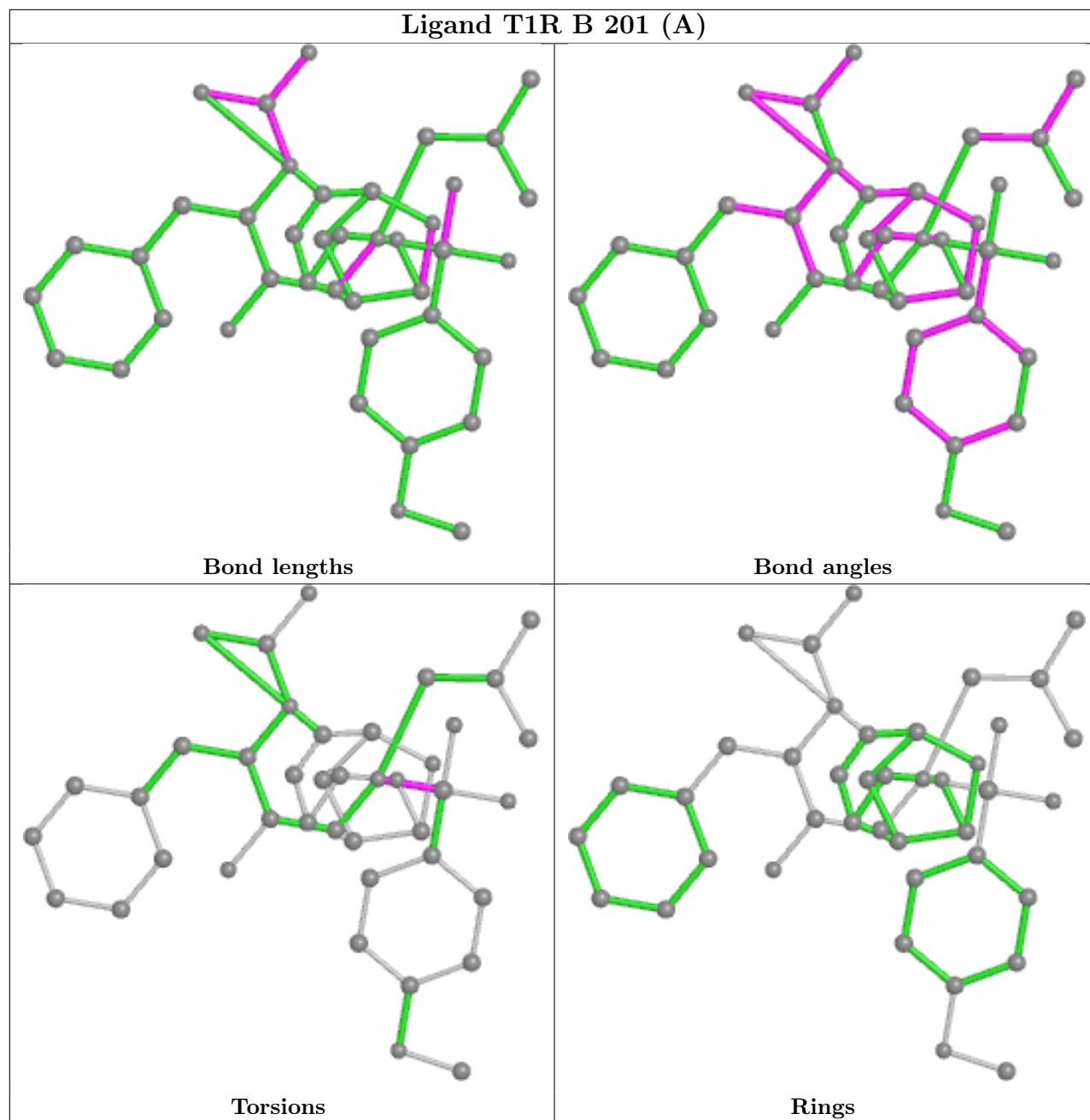
All (3) torsion outliers are listed below:

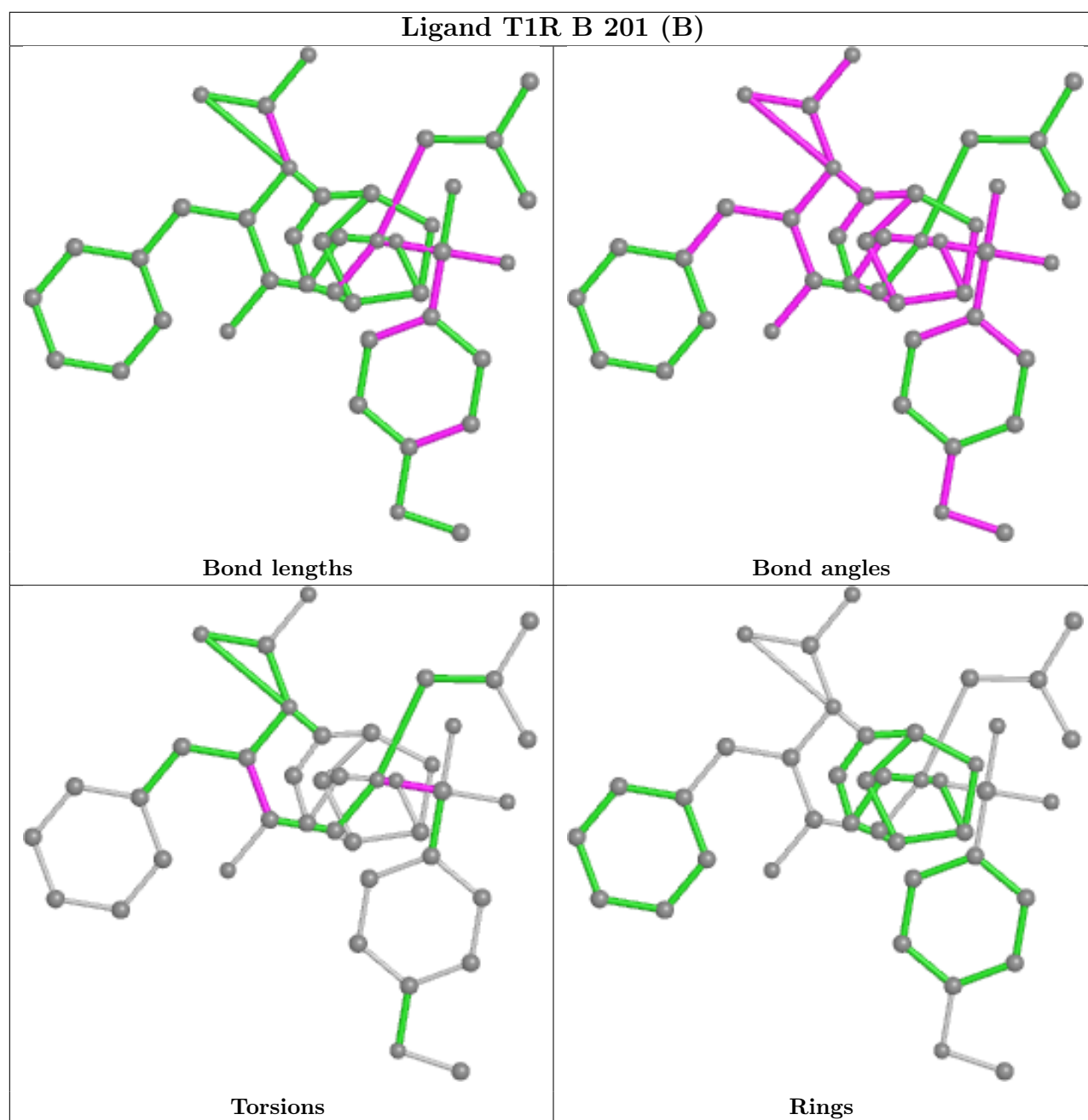
Mol	Chain	Res	Type	Atoms
5	B	201[B]	T1R	C16-C17-C19-N20
5	B	201[A]	T1R	C12-N11-S8-O10
5	B	201[B]	T1R	C12-N11-S8-O10

There are no ring outliers.

No monomer is involved in short contacts.

The following is a two-dimensional graphical depiction of Mogul quality analysis of bond lengths, bond angles, torsion angles, and ring geometry for all instances of the Ligand of Interest. In addition, ligands with molecular weight > 250 and outliers as shown on the validation Tables will also be included. For torsion angles, if less than 5% of the Mogul distribution of torsion angles is within 10 degrees of the torsion angle in question, then that torsion angle is considered an outlier. Any bond that is central to one or more torsion angles identified as an outlier by Mogul will be highlighted in the graph. For rings, the root-mean-square deviation (RMSD) between the ring in question and similar rings identified by Mogul is calculated over all ring torsion angles. If the average RMSD is greater than 60 degrees and the minimal RMSD between the ring in question and any Mogul-identified rings is also greater than 60 degrees, then that ring is considered an outlier. The outliers are highlighted in purple. The color gray indicates Mogul did not find sufficient equivalents in the CSD to analyse the geometry.





#### 4.7 Other polymers [\(i\)](#)

There are no such residues in this entry.

#### 4.8 Polymer linkage issues [\(i\)](#)

There are no chain breaks in this entry.

## 5 Fit of model and data [i](#)

### 5.1 Protein, DNA and RNA chains [i](#)

EDS failed to run properly - this section is therefore empty.

### 5.2 Non-standard residues in protein, DNA, RNA chains [i](#)

EDS failed to run properly - this section is therefore empty.

### 5.3 Carbohydrates [i](#)

EDS failed to run properly - this section is therefore empty.

### 5.4 Ligands [i](#)

EDS failed to run properly - this section is therefore empty.

### 5.5 Other polymers [i](#)

EDS failed to run properly - this section is therefore empty.