



# Full wwPDB X-ray Structure Validation Report ⓘ

Sep 25, 2023 – 01:55 AM EDT

PDB ID : 5VIF  
Title : Electrophilic probes for deciphering substrate recognition by O-GlcNAc transferase  
Authors : Jiang, J.; Li, B.; Hu, C.-W.; Worth, M.; Fan, D.; Li, H.  
Deposited on : 2017-04-15  
Resolution : 2.25 Å(reported)

This is a Full wwPDB X-ray Structure Validation Report for a publicly released PDB entry.

We welcome your comments at [validation@mail.wwpdb.org](mailto:validation@mail.wwpdb.org)

A user guide is available at

<https://www.wwpdb.org/validation/2017/XrayValidationReportHelp>

with specific help available everywhere you see the ⓘ symbol.

The types of validation reports are described at

<http://www.wwpdb.org/validation/2017/FAQs#types>.

---

The following versions of software and data (see [references ⓘ](#)) were used in the production of this report:

MolProbity : 4.02b-467  
Mogul : 1.8.5 (274361), CSD as541be (2020)  
Xtrriage (Phenix) : 1.13  
EDS : 2.35.1  
buster-report : 1.1.7 (2018)  
Percentile statistics : 20191225.v01 (using entries in the PDB archive December 25th 2019)  
Refmac : 5.8.0158  
CCP4 : 7.0.044 (Gargrove)  
Ideal geometry (proteins) : Engh & Huber (2001)  
Ideal geometry (DNA, RNA) : Parkinson et al. (1996)  
Validation Pipeline (wwPDB-VP) : 2.35.1

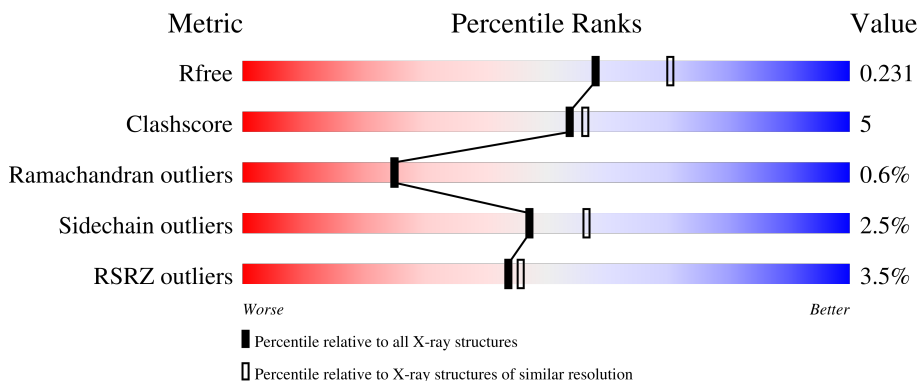
# 1 Overall quality at a glance

The following experimental techniques were used to determine the structure:

*X-RAY DIFFRACTION*

The reported resolution of this entry is 2.25 Å.

Percentile scores (ranging between 0-100) for global validation metrics of the entry are shown in the following graphic. The table shows the number of entries on which the scores are based.



Metric	Whole archive (#Entries)	Similar resolution (#Entries, resolution range(Å))
$R_{free}$	130704	1377 (2.26-2.26)
Clashscore	141614	1487 (2.26-2.26)
Ramachandran outliers	138981	1449 (2.26-2.26)
Sidechain outliers	138945	1450 (2.26-2.26)
RSRZ outliers	127900	1356 (2.26-2.26)

The table below summarises the geometric issues observed across the polymeric chains and their fit to the electron density. The red, orange, yellow and green segments of the lower bar indicate the fraction of residues that contain outliers for  $\geq 3$ , 2, 1 and 0 types of geometric quality criteria respectively. A grey segment represents the fraction of residues that are not modelled. The numeric value for each fraction is indicated below the corresponding segment, with a dot representing fractions  $\leq 5\%$ . The upper red bar (where present) indicates the fraction of residues that have poor fit to the electron density. The numeric value is given above the bar.

Mol	Chain	Length	Quality of chain
1	A	723	 3% 84% 10% 6%
2	B	14	 71% 14% 14%

## 2 Entry composition

There are 5 unique types of molecules in this entry. The entry contains 5746 atoms, of which 0 are hydrogens and 0 are deuteriums.

In the tables below, the ZeroOcc column contains the number of atoms modelled with zero occupancy, the AltConf column contains the number of residues with at least one atom in alternate conformation and the Trace column contains the number of residues modelled with at most 2 atoms.

- Molecule 1 is a protein called UDP-N-acetylglucosamine--peptide N-acetylglucosaminyltransferase 110 kDa subunit.

Mol	Chain	Residues	Atoms					ZeroOcc	AltConf	Trace
			Total	C	N	O	S			
1	A	683	5434	3453	947	997	37	0	7	0

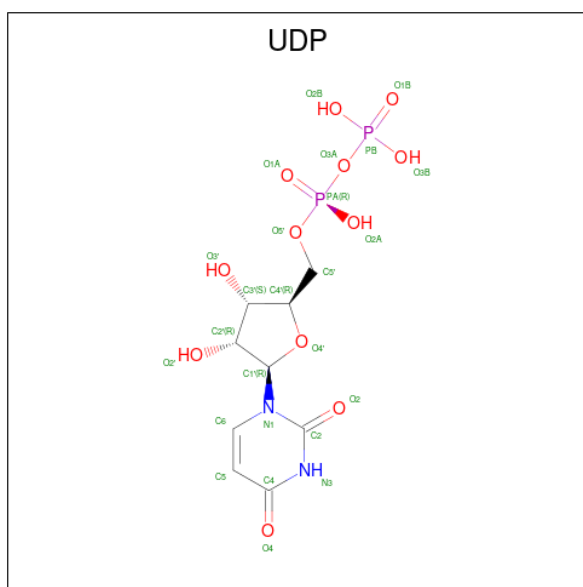
There are 4 discrepancies between the modelled and reference sequences:

Chain	Residue	Modelled	Actual	Comment	Reference
A	309	GLY	-	expression tag	UNP O15294
A	310	PRO	-	expression tag	UNP O15294
A	311	GLY	-	expression tag	UNP O15294
A	312	SER	-	expression tag	UNP O15294

- Molecule 2 is a protein called CKII.

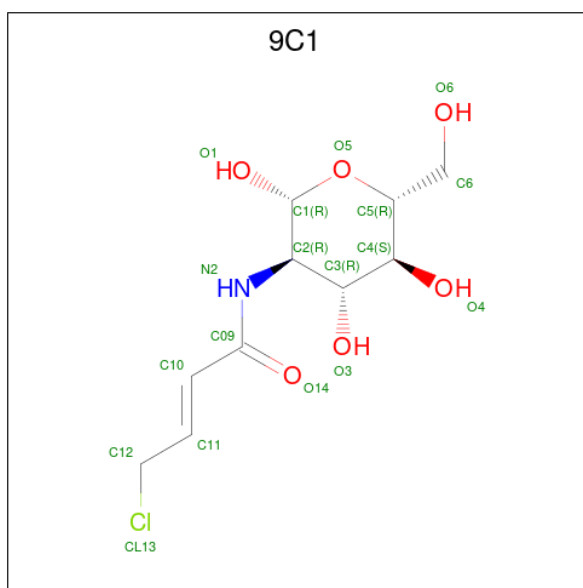
Mol	Chain	Residues	Atoms				ZeroOcc	AltConf	Trace
			Total	C	N	O			
2	B	12	79	48	13	18	0	0	0

- Molecule 3 is URIDINE-5'-DIPHOSPHATE (three-letter code: UDP) (formula: C<sub>9</sub>H<sub>14</sub>N<sub>2</sub>O<sub>12</sub>P<sub>2</sub>).



Mol	Chain	Residues	Atoms					ZeroOcc	AltConf
			Total	C	N	O	P		
3	A	1	25	9	2	12	2	0	0

- Molecule 4 is 2-([(2E)-4-chlorobut-2-enyl]amino)-2-deoxy-beta-D-glucopyranose (three-letter code: 9C1) (formula:  $C_{10}H_{16}ClNO_6$ ).



Mol	Chain	Residues	Atoms					ZeroOcc	AltConf
			Total	C	Cl	N	O		
4	B	1	17	10	1	1	5	0	0

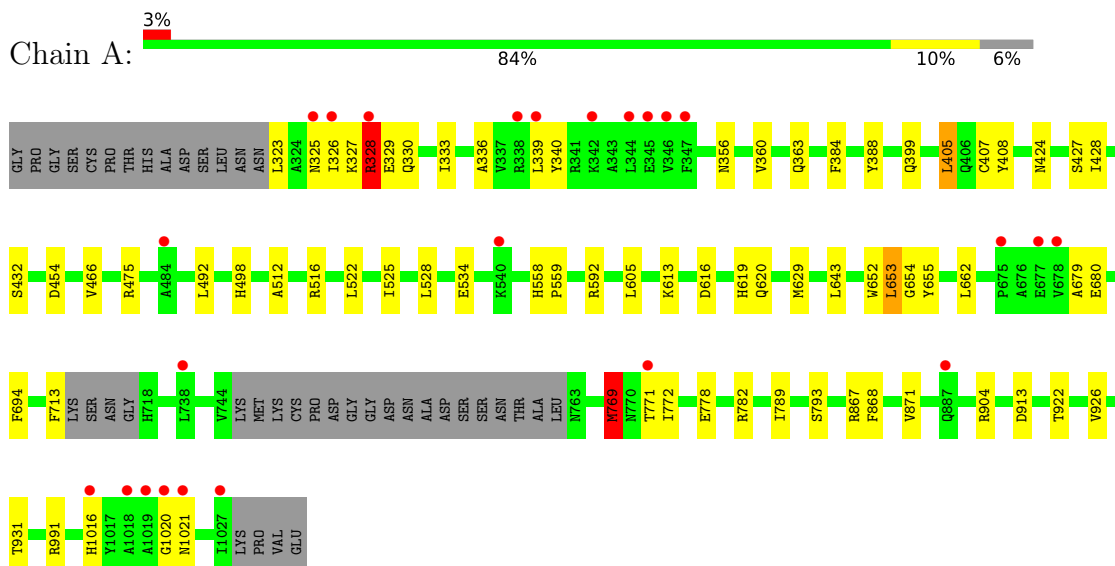
- Molecule 5 is water.

Mol	Chain	Residues	Atoms		ZeroOcc	AltConf
5	A	182	Total 182	O 182	0	0
5	B	9	Total 9	O 9	0	0

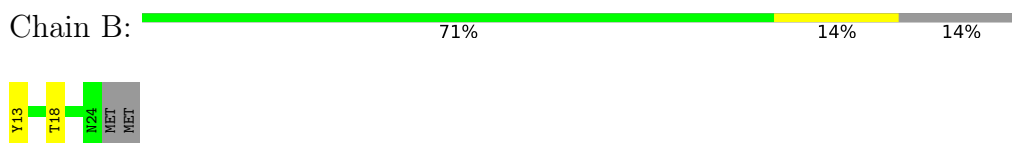
### 3 Residue-property plots [i](#)

These plots are drawn for all protein, RNA, DNA and oligosaccharide chains in the entry. The first graphic for a chain summarises the proportions of the various outlier classes displayed in the second graphic. The second graphic shows the sequence view annotated by issues in geometry and electron density. Residues are color-coded according to the number of geometric quality criteria for which they contain at least one outlier: green = 0, yellow = 1, orange = 2 and red = 3 or more. A red dot above a residue indicates a poor fit to the electron density ( $RSRZ > 2$ ). Stretches of 2 or more consecutive residues without any outlier are shown as a green connector. Residues present in the sample, but not in the model, are shown in grey.

- Molecule 1: UDP-N-acetylglucosamine--peptide N-acetylglucosaminyltransferase 110 kDa subunit



- Molecule 2: CKII



## 4 Data and refinement statistics

Property	Value	Source
Space group	F 2 2 2	Depositor
Cell constants a, b, c, $\alpha$ , $\beta$ , $\gamma$	139.08Å 152.73Å 199.40Å 90.00° 90.00° 90.00°	Depositor
Resolution (Å)	50.01 – 2.25 49.85 – 2.25	Depositor EDS
% Data completeness (in resolution range)	99.7 (50.01-2.25) 99.7 (49.85-2.25)	Depositor EDS
$R_{merge}$	0.07	Depositor
$R_{sym}$	(Not available)	Depositor
$\langle I/\sigma(I) \rangle$ <sup>1</sup>	6.98 (at 2.25Å)	Xtrriage
Refinement program	REFMAC 5.8.0131	Depositor
R, $R_{free}$	0.182 , 0.228 0.185 , 0.231	Depositor DCC
$R_{free}$ test set	2558 reflections (5.11%)	wwPDB-VP
Wilson B-factor (Å <sup>2</sup> )	45.2	Xtrriage
Anisotropy	0.123	Xtrriage
Bulk solvent $k_{sol}$ (e/Å <sup>3</sup> ), $B_{sol}$ (Å <sup>2</sup> )	0.35 , 39.2	EDS
L-test for twinning <sup>2</sup>	$\langle  L  \rangle = 0.50$ , $\langle L^2 \rangle = 0.33$	Xtrriage
Estimated twinning fraction	No twinning to report.	Xtrriage
$F_o, F_c$ correlation	0.96	EDS
Total number of atoms	5746	wwPDB-VP
Average B, all atoms (Å <sup>2</sup> )	53.0	wwPDB-VP

Xtrriage's analysis on translational NCS is as follows: *The largest off-origin peak in the Patterson function is 4.03% of the height of the origin peak. No significant pseudotranslation is detected.*

<sup>1</sup>Intensities estimated from amplitudes.

<sup>2</sup>Theoretical values of  $\langle |L| \rangle$ ,  $\langle L^2 \rangle$  for acentric reflections are 0.5, 0.333 respectively for untwinned datasets, and 0.375, 0.2 for perfectly twinned datasets.

## 5 Model quality [i](#)

### 5.1 Standard geometry [i](#)

Bond lengths and bond angles in the following residue types are not validated in this section: 9C1, UDP

The Z score for a bond length (or angle) is the number of standard deviations the observed value is removed from the expected value. A bond length (or angle) with  $|Z| > 5$  is considered an outlier worth inspection. RMSZ is the root-mean-square of all Z scores of the bond lengths (or angles).

Mol	Chain	Bond lengths		Bond angles	
		RMSZ	# Z  >5	RMSZ	# Z  >5
1	A	0.94	0/5581	0.99	13/7571 (0.2%)
2	B	1.26	0/81	1.11	0/111
All	All	0.95	0/5662	1.00	13/7682 (0.2%)

There are no bond length outliers.

All (13) bond angle outliers are listed below:

Mol	Chain	Res	Type	Atoms	Z	Observed(°)	Ideal(°)
1	A	328	ARG	NE-CZ-NH1	9.83	125.21	120.30
1	A	904	ARG	NE-CZ-NH2	-7.23	116.69	120.30
1	A	652	TRP	C-N-CA	-7.00	104.20	121.70
1	A	592	ARG	NE-CZ-NH2	-6.98	116.81	120.30
1	A	653	LEU	CA-CB-CG	6.62	130.52	115.30
1	A	867	ARG	NE-CZ-NH2	-6.31	117.14	120.30
1	A	405	LEU	CA-CB-CG	6.21	129.57	115.30
1	A	592	ARG	NE-CZ-NH1	6.21	123.40	120.30
1	A	904	ARG	NE-CZ-NH1	5.56	123.08	120.30
1	A	454	ASP	CB-CG-OD1	5.44	123.20	118.30
1	A	328	ARG	CD-NE-CZ	5.38	131.13	123.60
1	A	913	ASP	CB-CG-OD2	-5.34	113.49	118.30
1	A	475	ARG	NE-CZ-NH1	5.20	122.90	120.30

There are no chirality outliers.

There are no planarity outliers.

### 5.2 Too-close contacts [i](#)

In the following table, the Non-H and H(model) columns list the number of non-hydrogen atoms and hydrogen atoms in the chain respectively. The H(added) column lists the number of hydrogen



atoms added and optimized by MolProbity. The Clashes column lists the number of clashes within the asymmetric unit, whereas Symm-Clashes lists symmetry-related clashes.

Mol	Chain	Non-H	H(model)	H(added)	Clashes	Symm-Clashes
1	A	5434	0	5419	56	1
2	B	79	0	69	1	0
3	A	25	0	11	1	0
4	B	17	0	0	2	0
5	A	182	0	0	1	2
5	B	9	0	0	0	0
All	All	5746	0	5499	59	3

The all-atom clashscore is defined as the number of clashes found per 1000 atoms (including hydrogen atoms). The all-atom clashscore for this structure is 5.

All (59) close contacts within the same asymmetric unit are listed below, sorted by their clash magnitude.

Atom-1	Atom-2	Interatomic distance (Å)	Clash overlap (Å)
4:B:101:9C1:C12	4:B:101:9C1:CL13	2.03	1.41
1:A:326:ILE:CD1	1:A:339:LEU:HB3	1.68	1.23
1:A:326:ILE:HD11	1:A:339:LEU:HB3	1.08	1.08
1:A:326:ILE:CG1	1:A:339:LEU:CB	2.34	1.05
1:A:326:ILE:CG1	1:A:339:LEU:HB3	1.88	1.03
1:A:326:ILE:CG1	1:A:339:LEU:HB2	1.98	0.91
1:A:326:ILE:HG23	1:A:336:ALA:HA	1.51	0.90
1:A:326:ILE:HG12	1:A:339:LEU:CB	2.07	0.84
1:A:326:ILE:HG13	1:A:339:LEU:HB2	1.61	0.82
1:A:326:ILE:HG13	1:A:339:LEU:CB	2.10	0.82
1:A:772:ILE:HG23	1:A:789:ILE:HD13	1.64	0.80
1:A:326:ILE:HG12	1:A:339:LEU:HB2	1.65	0.77
1:A:326:ILE:HG23	1:A:336:ALA:CA	2.13	0.77
1:A:323:LEU:HB2	1:A:326:ILE:CD1	2.19	0.73
1:A:522:LEU:HD11	1:A:662:LEU:HD21	1.74	0.70
1:A:323:LEU:HB2	1:A:326:ILE:HD13	1.74	0.69
1:A:328:ARG:O	1:A:330:GLN:N	2.25	0.69
1:A:326:ILE:HD11	1:A:339:LEU:CB	2.05	0.67
1:A:327:LYS:HE3	1:A:356:ASN:OD1	1.96	0.65
1:A:534:GLU:O	1:A:619:HIS:HE1	1.81	0.64
1:A:325:ASN:O	1:A:328:ARG:N	2.37	0.57
1:A:926:VAL:HG12	1:A:931[B]:THR:HB	1.84	0.57
1:A:326:ILE:CG2	1:A:336:ALA:O	2.51	0.57
1:A:323:LEU:CB	1:A:326:ILE:HD12	2.35	0.56
2:B:13:TYR:N	2:B:18:THR:HG1	2.03	0.56

*Continued on next page...*

Continued from previous page...

Atom-1	Atom-2	Interatomic distance (Å)	Clash overlap (Å)
1:A:327:LYS:CE	1:A:356:ASN:OD1	2.54	0.56
1:A:326:ILE:HG21	1:A:340:TYR:CD2	2.42	0.54
1:A:778:GLU:O	1:A:782:ARG:HG3	2.07	0.54
1:A:326:ILE:HG21	1:A:336:ALA:O	2.08	0.54
1:A:326:ILE:HG22	1:A:340:TYR:CE2	2.43	0.53
4:B:101:9C1:CL13	4:B:101:9C1:C11	2.92	0.51
1:A:333:ILE:HG23	1:A:360:VAL:HG23	1.93	0.51
1:A:558:HIS:CG	1:A:559:PRO:HD2	2.46	0.51
1:A:713:PHE:HA	1:A:769:MET:HG3	1.92	0.51
1:A:323:LEU:HB3	1:A:326:ILE:HD12	1.95	0.49
1:A:466:VAL:HG12	1:A:871:VAL:HG23	1.94	0.48
1:A:405:LEU:HD13	1:A:428:ILE:HG21	1.95	0.48
1:A:512:ALA:O	1:A:516:ARG:HG2	2.13	0.48
1:A:713:PHE:HA	1:A:769:MET:CG	2.43	0.48
1:A:333:ILE:HG23	1:A:360:VAL:CG2	2.44	0.48
1:A:326:ILE:HG22	1:A:340:TYR:CZ	2.50	0.47
1:A:323:LEU:CB	1:A:326:ILE:CD1	2.90	0.46
1:A:326:ILE:HG23	1:A:336:ALA:O	2.15	0.46
1:A:629:MET:O	1:A:654:GLY:HA3	2.15	0.46
1:A:326:ILE:CG2	1:A:340:TYR:CE2	3.00	0.45
1:A:326:ILE:HG13	1:A:339:LEU:CD2	2.46	0.45
1:A:613:LYS:O	1:A:616:ASP:HB2	2.16	0.45
1:A:922:THR:HG22	3:A:1100:UDP:H2'	1.99	0.45
1:A:408:TYR:CZ	1:A:424:ASN:HB3	2.51	0.44
1:A:1016:HIS:O	1:A:1021:ASN:HB2	2.17	0.44
1:A:408:TYR:CE1	1:A:424:ASN:HB3	2.53	0.44
1:A:525:ILE:HD13	1:A:643:LEU:HD23	2.00	0.43
1:A:605:LEU:HD23	1:A:605:LEU:HA	1.82	0.43
1:A:534:GLU:O	1:A:619:HIS:CE1	2.69	0.42
1:A:323:LEU:HD23	1:A:323:LEU:HA	1.91	0.41
1:A:388:TYR:O	1:A:407:CYS:HB3	2.22	0.40
1:A:498:HIS:HD2	1:A:655:TYR:CE1	2.39	0.40
1:A:326:ILE:HG23	1:A:336:ALA:C	2.41	0.40
1:A:363:GLN:HG3	5:A:1232:HOH:O	2.22	0.40

All (3) symmetry-related close contacts are listed below. The label for Atom-2 includes the symmetry operator and encoded unit-cell translations to be applied.

Atom-1	Atom-2	Interatomic distance (Å)	Clash overlap (Å)
1:A:620:GLN:NE2	1:A:620:GLN:NE2[11_554]	1.73	0.47

Continued on next page...

Continued from previous page...

Atom-1	Atom-2	Interatomic distance (Å)	Clash overlap (Å)
5:A:1205:HOH:O	5:A:1205:HOH:O[8_544]	1.74	0.46
5:A:1369:HOH:O	5:A:1369:HOH:O[14_545]	2.04	0.16

## 5.3 Torsion angles [i](#)

### 5.3.1 Protein backbone [i](#)

In the following table, the Percentiles column shows the percent Ramachandran outliers of the chain as a percentile score with respect to all X-ray entries followed by that with respect to entries of similar resolution.

The Analysed column shows the number of residues for which the backbone conformation was analysed, and the total number of residues.

Mol	Chain	Analysed	Favoured	Allowed	Outliers	Percentiles	
1	A	684/723 (95%)	651 (95%)	29 (4%)	4 (1%)	25	25
2	B	10/14 (71%)	9 (90%)	1 (10%)	0	100	100
All	All	694/737 (94%)	660 (95%)	30 (4%)	4 (1%)	25	25

All (4) Ramachandran outliers are listed below:

Mol	Chain	Res	Type
1	A	329	GLU
1	A	679	ALA
1	A	769	MET
1	A	1020	GLY

### 5.3.2 Protein sidechains [i](#)

In the following table, the Percentiles column shows the percent sidechain outliers of the chain as a percentile score with respect to all X-ray entries followed by that with respect to entries of similar resolution.

The Analysed column shows the number of residues for which the sidechain conformation was analysed, and the total number of residues.

Mol	Chain	Analysed	Rotameric	Outliers	Percentiles	
1	A	593/618 (96%)	578 (98%)	15 (2%)	47	56
2	B	9/11 (82%)	9 (100%)	0	100	100

Continued on next page...

*Continued from previous page...*

Mol	Chain	Analysed	Rotameric	Outliers	Percentiles
All	All	602/629 (96%)	587 (98%)	15 (2%)	47 56

All (15) residues with a non-rotameric sidechain are listed below:

Mol	Chain	Res	Type
1	A	328	ARG
1	A	384	PHE
1	A	399	GLN
1	A	427	SER
1	A	432	SER
1	A	492	LEU
1	A	528	LEU
1	A	653	LEU
1	A	680	GLU
1	A	694	PHE
1	A	769	MET
1	A	771	THR
1	A	793	SER
1	A	868	PHE
1	A	991	ARG

Sometimes sidechains can be flipped to improve hydrogen bonding and reduce clashes. All (4) such sidechains are listed below:

Mol	Chain	Res	Type
1	A	399	GLN
1	A	402	GLN
1	A	507	HIS
1	A	619	HIS

### 5.3.3 RNA [i](#)

There are no RNA molecules in this entry.

### 5.4 Non-standard residues in protein, DNA, RNA chains [i](#)

There are no non-standard protein/DNA/RNA residues in this entry.

## 5.5 Carbohydrates [i](#)

There are no monosaccharides in this entry.

## 5.6 Ligand geometry [i](#)

2 ligands are modelled in this entry.

In the following table, the Counts columns list the number of bonds (or angles) for which Mogul statistics could be retrieved, the number of bonds (or angles) that are observed in the model and the number of bonds (or angles) that are defined in the Chemical Component Dictionary. The Link column lists molecule types, if any, to which the group is linked. The Z score for a bond length (or angle) is the number of standard deviations the observed value is removed from the expected value. A bond length (or angle) with  $|Z| > 2$  is considered an outlier worth inspection. RMSZ is the root-mean-square of all Z scores of the bond lengths (or angles).

Mol	Type	Chain	Res	Link	Bond lengths			Bond angles		
					Counts	RMSZ	# Z  > 2	Counts	RMSZ	# Z  > 2
4	9C1	B	101	2	17,17,18	4.06	11 (64%)	18,22,24	3.76	9 (50%)
3	UDP	A	1100	-	24,26,26	1.25	4 (16%)	37,40,40	1.95	5 (13%)

In the following table, the Chirals column lists the number of chiral outliers, the number of chiral centers analysed, the number of these observed in the model and the number defined in the Chemical Component Dictionary. Similar counts are reported in the Torsion and Rings columns. '-' means no outliers of that kind were identified.

Mol	Type	Chain	Res	Link	Chirals	Torsions	Rings
4	9C1	B	101	2	-	0/9/27/30	0/1/1/1
3	UDP	A	1100	-	-	2/16/32/32	0/2/2/2

All (15) bond length outliers are listed below:

Mol	Chain	Res	Type	Atoms	Z	Observed(Å)	Ideal(Å)
4	B	101	9C1	C1-C2	12.15	1.70	1.52
4	B	101	9C1	C12-CL13	5.32	2.03	1.79
4	B	101	9C1	C4-C5	4.55	1.62	1.53
4	B	101	9C1	C3-C2	3.79	1.60	1.52
4	B	101	9C1	C09-N2	3.50	1.42	1.34
4	B	101	9C1	C2-N2	3.26	1.51	1.46
4	B	101	9C1	C10-C09	3.24	1.55	1.48
4	B	101	9C1	O5-C1	3.10	1.48	1.43
3	A	1100	UDP	C2-N3	-2.97	1.32	1.38
4	B	101	9C1	O5-C5	2.61	1.48	1.43
4	B	101	9C1	C6-C5	2.57	1.60	1.51

*Continued on next page...*

Continued from previous page...

Mol	Chain	Res	Type	Atoms	Z	Observed(Å)	Ideal(Å)
3	A	1100	UDP	C2-N1	2.55	1.42	1.38
4	B	101	9C1	C10-C11	2.38	1.38	1.32
3	A	1100	UDP	C6-N1	-2.17	1.32	1.38
3	A	1100	UDP	O2-C2	2.17	1.27	1.23

All (14) bond angle outliers are listed below:

Mol	Chain	Res	Type	Atoms	Z	Observed(°)	Ideal(°)
4	B	101	9C1	C1-O5-C5	8.44	123.63	112.19
4	B	101	9C1	C10-C09-N2	8.30	130.51	114.56
4	B	101	9C1	O14-C09-N2	-7.35	112.63	122.35
3	A	1100	UDP	C4-N3-C2	-6.56	117.93	126.58
3	A	1100	UDP	C5-C4-N3	5.08	122.44	114.84
3	A	1100	UDP	N3-C2-N1	3.93	120.11	114.89
4	B	101	9C1	O5-C1-C2	3.44	116.71	111.29
3	A	1100	UDP	O4-C4-C5	-3.24	119.45	125.16
4	B	101	9C1	O5-C5-C6	3.04	111.96	107.20
4	B	101	9C1	O4-C4-C3	-2.78	103.92	110.35
3	A	1100	UDP	O4'-C1'-N1	-2.77	102.03	108.36
4	B	101	9C1	C3-C4-C5	-2.72	105.38	110.24
4	B	101	9C1	O14-C09-C10	-2.71	116.85	123.03
4	B	101	9C1	C6-C5-C4	-2.70	106.68	113.00

There are no chirality outliers.

All (2) torsion outliers are listed below:

Mol	Chain	Res	Type	Atoms
3	A	1100	UDP	C3'-C4'-C5'-O5'
3	A	1100	UDP	O4'-C4'-C5'-O5'

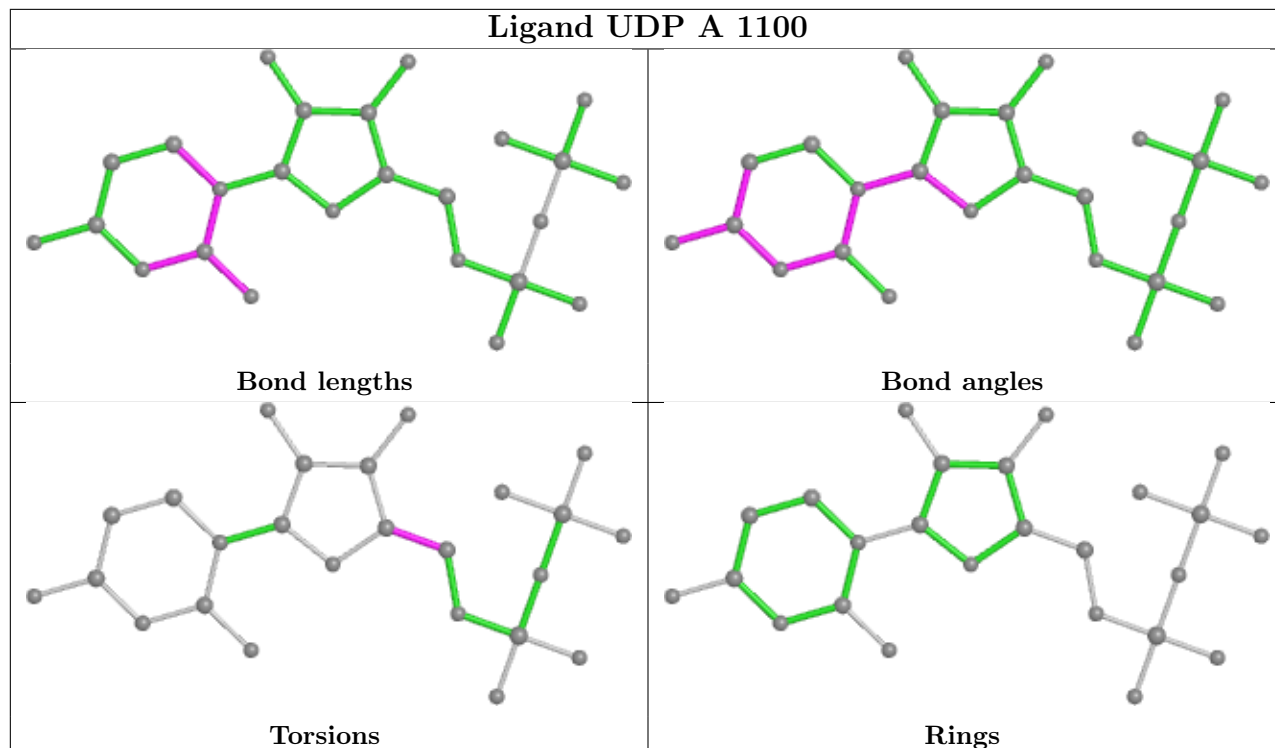
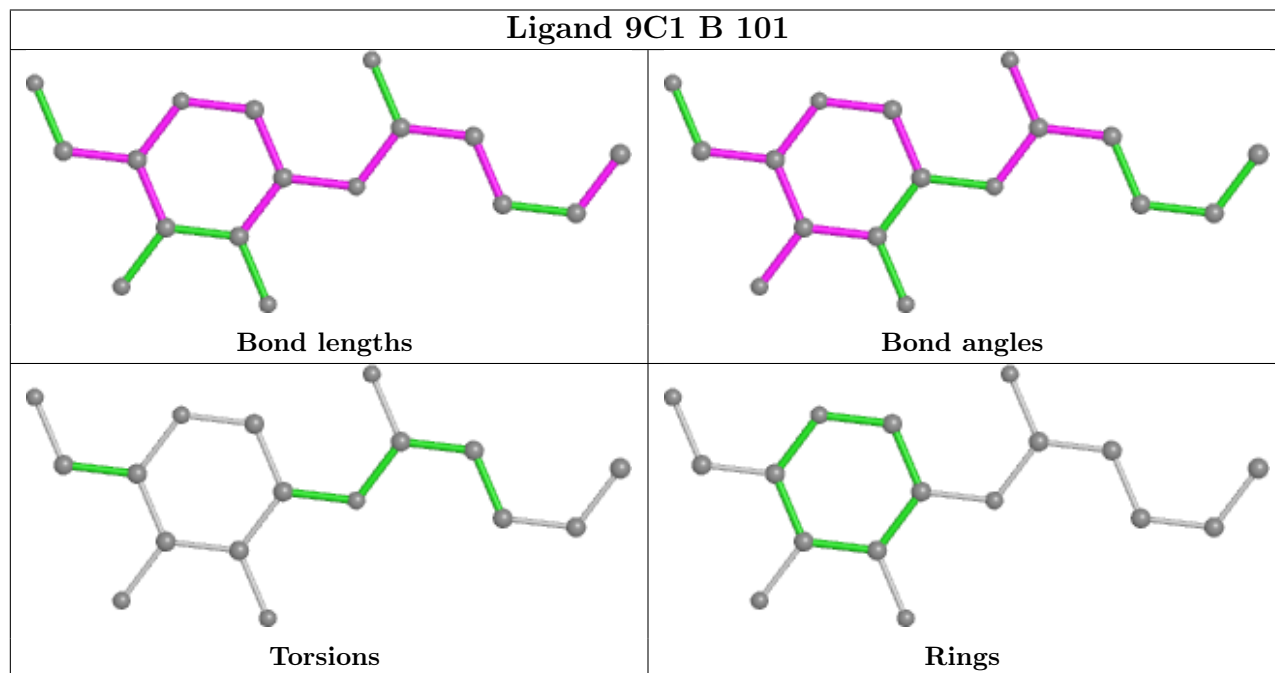
There are no ring outliers.

2 monomers are involved in 3 short contacts:

Mol	Chain	Res	Type	Clashes	Symm-Clashes
4	B	101	9C1	2	0
3	A	1100	UDP	1	0

The following is a two-dimensional graphical depiction of Mogul quality analysis of bond lengths, bond angles, torsion angles, and ring geometry for all instances of the Ligand of Interest. In addition, ligands with molecular weight > 250 and outliers as shown on the validation Tables will also be included. For torsion angles, if less than 5% of the Mogul distribution of torsion angles is

within 10 degrees of the torsion angle in question, then that torsion angle is considered an outlier. Any bond that is central to one or more torsion angles identified as an outlier by Mogul will be highlighted in the graph. For rings, the root-mean-square deviation (RMSD) between the ring in question and similar rings identified by Mogul is calculated over all ring torsion angles. If the average RMSD is greater than 60 degrees and the minimal RMSD between the ring in question and any Mogul-identified rings is also greater than 60 degrees, then that ring is considered an outlier. The outliers are highlighted in purple. The color gray indicates Mogul did not find sufficient equivalents in the CSD to analyse the geometry.



## 5.7 Other polymers [i](#)

There are no such residues in this entry.

## 5.8 Polymer linkage issues [i](#)

There are no chain breaks in this entry.



## 6 Fit of model and data

### 6.1 Protein, DNA and RNA chains

In the following table, the column labelled ‘#RSRZ > 2’ contains the number (and percentage) of RSRZ outliers, followed by percent RSRZ outliers for the chain as percentile scores relative to all X-ray entries and entries of similar resolution. The OWAB column contains the minimum, median, 95<sup>th</sup> percentile and maximum values of the occupancy-weighted average B-factor per residue. The column labelled ‘Q < 0.9’ lists the number of (and percentage) of residues with an average occupancy less than 0.9.

Mol	Chain	Analysed	<RSRZ>	#RSRZ>2	OWAB(Å <sup>2</sup> )	Q<0.9
1	A	683/723 (94%)	-0.07	24 (3%) 44 46	30, 48, 89, 121	0
2	B	12/14 (85%)	-0.07	0 100 100	33, 43, 53, 55	0
All	All	695/737 (94%)	-0.07	24 (3%) 44 46	30, 48, 89, 121	0

All (24) RSRZ outliers are listed below:

Mol	Chain	Res	Type	RSRZ
1	A	326	ILE	6.2
1	A	328	ARG	5.4
1	A	346	VAL	3.9
1	A	347	PHE	3.4
1	A	771	THR	3.4
1	A	1020	GLY	3.3
1	A	342	LYS	3.2
1	A	1027	ILE	3.0
1	A	887	GLN	3.0
1	A	1018	ALA	2.9
1	A	345	GLU	2.8
1	A	344	LEU	2.8
1	A	1016	HIS	2.7
1	A	1021	ASN	2.7
1	A	339	LEU	2.5
1	A	1019	ALA	2.5
1	A	325	ASN	2.4
1	A	675	PRO	2.2
1	A	677	GLU	2.2
1	A	484	ALA	2.1
1	A	540	LYS	2.1
1	A	738	LEU	2.1
1	A	678	VAL	2.1
1	A	338	ARG	2.1

## 6.2 Non-standard residues in protein, DNA, RNA chains [i](#)

There are no non-standard protein/DNA/RNA residues in this entry.

## 6.3 Carbohydrates [i](#)

There are no monosaccharides in this entry.

## 6.4 Ligands [i](#)

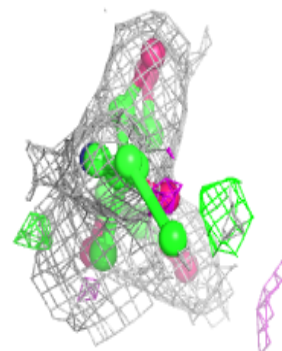
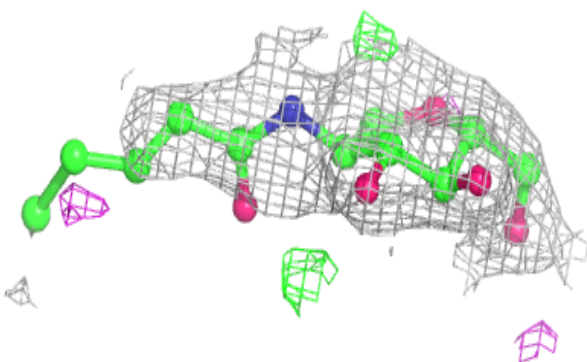
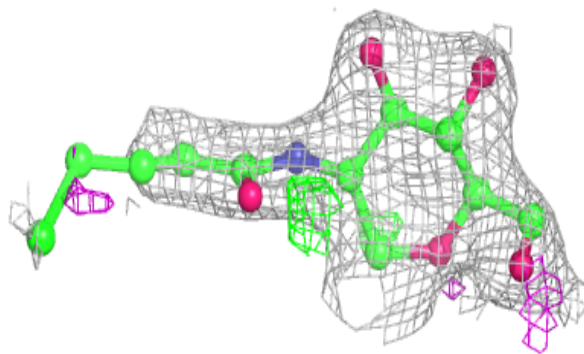
In the following table, the Atoms column lists the number of modelled atoms in the group and the number defined in the chemical component dictionary. The B-factors column lists the minimum, median, 95<sup>th</sup> percentile and maximum values of B factors of atoms in the group. The column labelled 'Q< 0.9' lists the number of atoms with occupancy less than 0.9.

Mol	Type	Chain	Res	Atoms	RSCC	RSR	B-factors( $\text{\AA}^2$ )	Q<0.9
4	9C1	B	101	17/18	0.93	0.17	46,60,117,123	0
3	UDP	A	1100	25/25	0.99	0.14	26,33,38,40	0

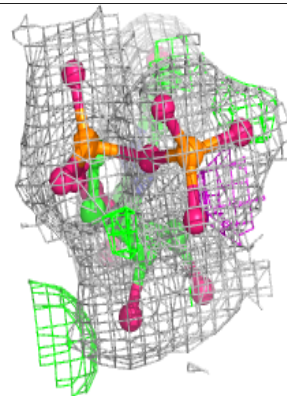
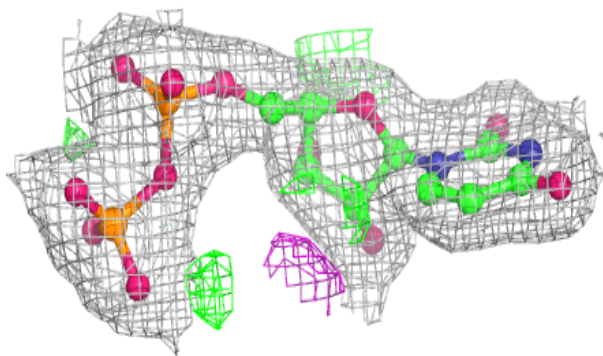
The following is a graphical depiction of the model fit to experimental electron density of all instances of the Ligand of Interest. In addition, ligands with molecular weight > 250 and outliers as shown on the geometry validation Tables will also be included. Each fit is shown from different orientation to approximate a three-dimensional view.

**Electron density around 9C1 B 101:**

$2mF_o-DF_c$  (at 0.7 rmsd) in gray  
 $mF_o-DF_c$  (at 3 rmsd) in purple (negative)  
and green (positive)

**Electron density around UDP A 1100:**

$2mF_o-DF_c$  (at 0.7 rmsd) in gray  
 $mF_o-DF_c$  (at 3 rmsd) in purple (negative)  
and green (positive)



## 6.5 Other polymers [i](#)

There are no such residues in this entry.