



Full wwPDB EM Validation Report ⓘ

Nov 29, 2022 – 12:38 AM JST

PDB ID : 7VH0
EMDB ID : EMD-31982
Title : MT2-remalteon-Gi complex
Authors : Wang, Q.G.; Lu, Q.Y.
Deposited on : 2021-09-20
Resolution : 3.46 Å(reported)

This is a Full wwPDB EM Validation Report for a publicly released PDB entry.

We welcome your comments at validation@mail.wwpdb.org

A user guide is available at

<https://www.wwpdb.org/validation/2017/EMValidationReportHelp>

with specific help available everywhere you see the ⓘ symbol.

The types of validation reports are described at

<http://www.wwpdb.org/validation/2017/FAQs#types>.

The following versions of software and data (see [references ⓘ](#)) were used in the production of this report:

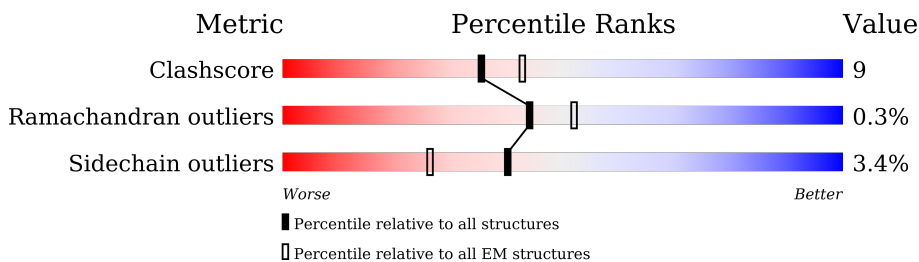
EMDB validation analysis : 0.0.1.dev43
Mogul : 1.8.5 (274361), CSD as541be (2020)
MolProbity : 4.02b-467
buster-report : 1.1.7 (2018)
Percentile statistics : 20191225.v01 (using entries in the PDB archive December 25th 2019)
MapQ : 1.9.9
Ideal geometry (proteins) : Engh & Huber (2001)
Ideal geometry (DNA, RNA) : Parkinson et al. (1996)
Validation Pipeline (wwPDB-VP) : 2.31.3

1 Overall quality at a glance

The following experimental techniques were used to determine the structure:
ELECTRON MICROSCOPY

The reported resolution of this entry is 3.46 Å.

Percentile scores (ranging between 0-100) for global validation metrics of the entry are shown in the following graphic. The table shows the number of entries on which the scores are based.



Metric	Whole archive (#Entries)	EM structures (#Entries)
Clashscore	158937	4297
Ramachandran outliers	154571	4023
Sidechain outliers	154315	3826

The table below summarises the geometric issues observed across the polymeric chains and their fit to the map. The red, orange, yellow and green segments of the bar indicate the fraction of residues that contain outliers for ≥ 3 , 2, 1 and 0 types of geometric quality criteria respectively. A grey segment represents the fraction of residues that are not modelled. The numeric value for each fraction is indicated below the corresponding segment, with a dot representing fractions $\leq 5\%$. The upper red bar (where present) indicates the fraction of residues that have poor fit to the EM map (all-atom inclusion $< 40\%$). The numeric value is given above the bar.

Mol	Chain	Length	Quality of chain
1	A	362	
2	B	354	
3	C	353	
4	D	323	
4	E	323	

2 Entry composition [i](#)

There are 5 unique types of molecules in this entry. The entry contains 8656 atoms, of which 0 are hydrogens and 0 are deuteriums.

In the tables below, the AltConf column contains the number of residues with at least one atom in alternate conformation and the Trace column contains the number of residues modelled with at most 2 atoms.

- Molecule 1 is a protein called Melatonin receptor type 1B.

Mol	Chain	Residues	Atoms					AltConf	Trace
			Total	C	N	O	S		
1	A	273	2122	1427	338	345	12	0	0

There are 3 discrepancies between the modelled and reference sequences:

Chain	Residue	Modelled	Actual	Comment	Reference
A	108	PHE	LEU	conflict	UNP P49286
A	129	TRP	PHE	conflict	UNP P49286
A	140	LEU	CYS	conflict	UNP P49286

- Molecule 2 is a protein called Guanine nucleotide-binding protein G(i) subunit alpha-1.

Mol	Chain	Residues	Atoms					AltConf	Trace
			Total	C	N	O	S		
2	B	215	1735	1105	290	328	12	0	0

There is a discrepancy between the modelled and reference sequences:

Chain	Residue	Modelled	Actual	Comment	Reference
B	1	GLY	-	expression tag	UNP P63096

- Molecule 3 is a protein called Guanine nucleotide-binding protein G(I)/G(S)/G(T) subunit beta-1.

Mol	Chain	Residues	Atoms					AltConf	Trace
			Total	C	N	O	S		
3	C	336	2584	1593	464	506	21	0	0

There are 17 discrepancies between the modelled and reference sequences:

Chain	Residue	Modelled	Actual	Comment	Reference
C	-12	HIS	-	expression tag	UNP P54311
C	-11	HIS	-	expression tag	UNP P54311

Continued on next page...

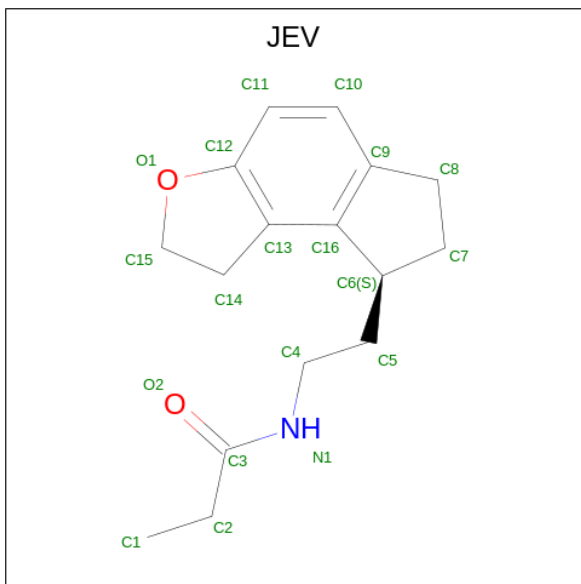
Continued from previous page...

Chain	Residue	Modelled	Actual	Comment	Reference
C	-10	HIS	-	expression tag	UNP P54311
C	-9	HIS	-	expression tag	UNP P54311
C	-8	HIS	-	expression tag	UNP P54311
C	-7	HIS	-	expression tag	UNP P54311
C	-6	HIS	-	expression tag	UNP P54311
C	-5	HIS	-	expression tag	UNP P54311
C	-4	MET	-	expression tag	UNP P54311
C	-3	GLY	-	expression tag	UNP P54311
C	-2	SER	-	expression tag	UNP P54311
C	-1	LEU	-	expression tag	UNP P54311
C	0	LEU	-	expression tag	UNP P54311
C	1	GLN	-	expression tag	UNP P54311
C	6	GLU	GLN	conflict	UNP P54311
C	130	GLN	GLU	conflict	UNP P54311
C	237	ASP	ASN	conflict	UNP P54311

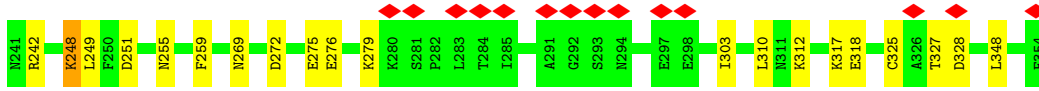
- Molecule 4 is a protein called scFv16.

Mol	Chain	Residues	Atoms					AltConf	Trace
			Total	C	N	O	S		
4	D	54	Total 418	C 263	N 76	O 76	S 3	0	0
4	E	231	Total 1778	C 1129	N 294	O 345	S 10	0	0

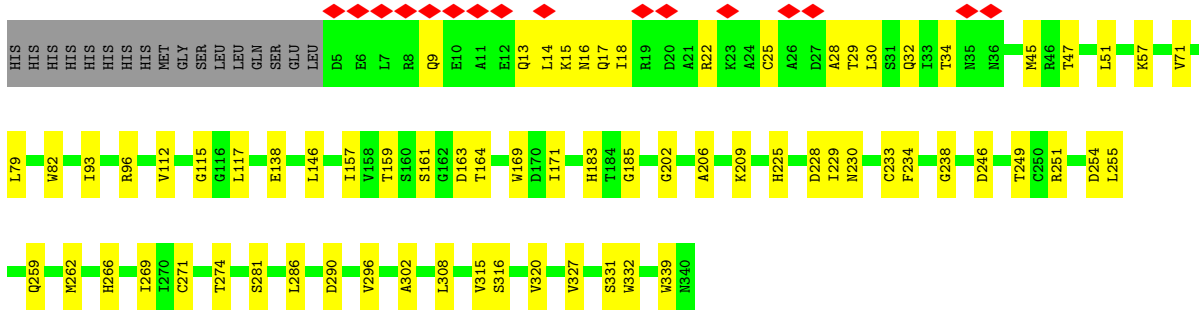
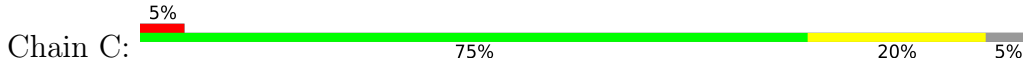
- Molecule 5 is N-{2-[(8S)-1,6,7,8-tetrahydro-2H-indeno[5,4-b]furan-8-yl]ethyl}propanamide (three-letter code: JEV) (formula: C₁₆H₂₁NO₂).



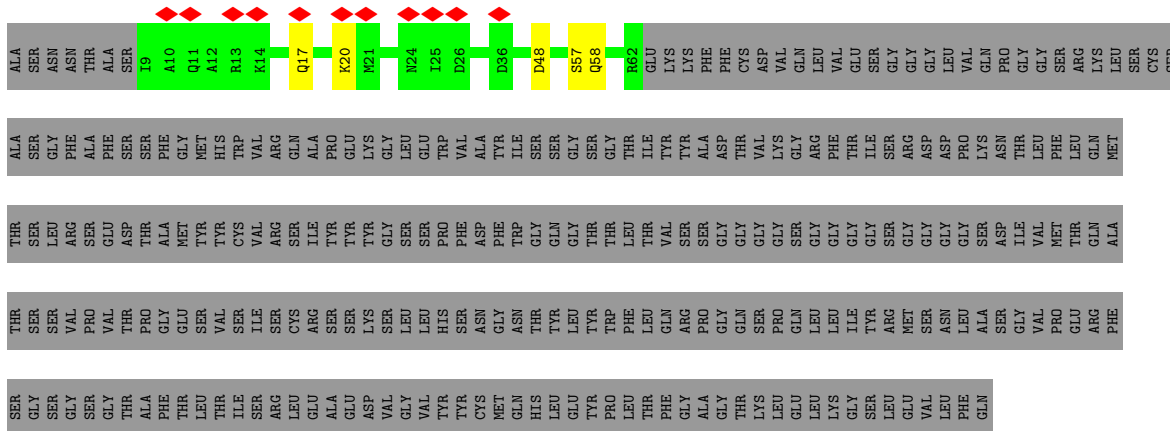
Mol	Chain	Residues	Atoms				AltConf
			Total	C	N	O	
5	A	1	19	16	1	2	0



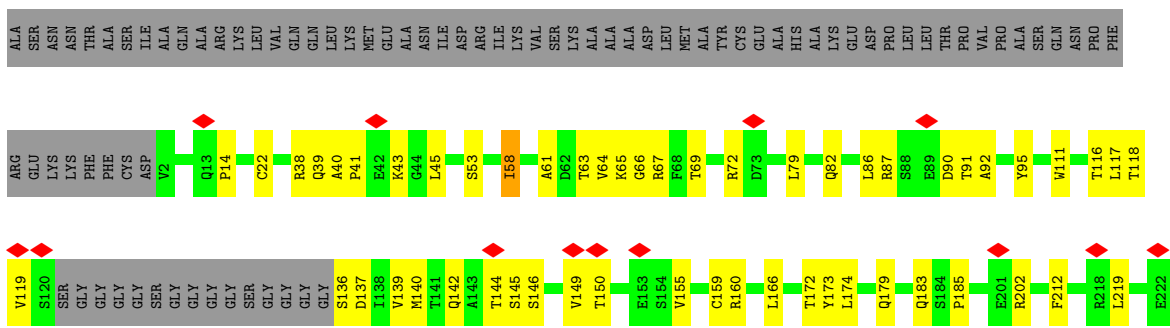
• Molecule 3: Guanine nucleotide-binding protein G(I)/G(S)/G(T) subunit beta-1

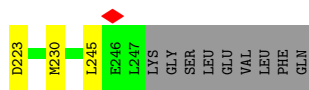


• Molecule 4: scFv16



• Molecule 4: scFv16





4 Experimental information

Property	Value	Source
EM reconstruction method	SINGLE PARTICLE	Depositor
Imposed symmetry	POINT, Not provided	
Number of particles used	335170	Depositor
Resolution determination method	FSC 0.143 CUT-OFF	Depositor
CTF correction method	PHASE FLIPPING AND AMPLITUDE CORRECTION	Depositor
Microscope	FEI TITAN KRIOS	Depositor
Voltage (kV)	300	Depositor
Electron dose ($e^-/\text{\AA}^2$)	70	Depositor
Minimum defocus (nm)	1200	Depositor
Maximum defocus (nm)	2000	Depositor
Magnification	Not provided	
Image detector	GATAN K3 (6k x 4k)	Depositor
Maximum map value	1.044	Depositor
Minimum map value	-0.728	Depositor
Average map value	0.000	Depositor
Map value standard deviation	0.030	Depositor
Recommended contour level	0.13	Depositor
Map size (Å)	217.6, 217.6, 217.6	wwPDB
Map dimensions	256, 256, 256	wwPDB
Map angles (°)	90.0, 90.0, 90.0	wwPDB
Pixel spacing (Å)	0.85, 0.85, 0.85	Depositor

5 Model quality [i](#)

5.1 Standard geometry [i](#)

Bond lengths and bond angles in the following residue types are not validated in this section: JEV

The Z score for a bond length (or angle) is the number of standard deviations the observed value is removed from the expected value. A bond length (or angle) with $|Z| > 5$ is considered an outlier worth inspection. RMSZ is the root-mean-square of all Z scores of the bond lengths (or angles).

Mol	Chain	Bond lengths		Bond angles	
		RMSZ	# Z >5	RMSZ	# Z >5
1	A	0.38	0/2182	0.56	0/2996
2	B	0.36	0/1764	0.49	0/2364
3	C	0.24	0/2631	0.53	0/3566
4	D	0.24	0/424	0.46	0/572
4	E	0.27	0/1822	0.55	1/2470 (0.0%)
All	All	0.31	0/8823	0.53	1/11968 (0.0%)

There are no bond length outliers.

All (1) bond angle outliers are listed below:

Mol	Chain	Res	Type	Atoms	Z	Observed(°)	Ideal(°)
4	E	58	ILE	CG1-CB-CG2	-5.34	99.66	111.40

There are no chirality outliers.

There are no planarity outliers.

5.2 Too-close contacts [i](#)

In the following table, the Non-H and H(model) columns list the number of non-hydrogen atoms and hydrogen atoms in the chain respectively. The H(added) column lists the number of hydrogen atoms added and optimized by MolProbity. The Clashes column lists the number of clashes within the asymmetric unit, whereas Symm-Clashes lists symmetry-related clashes.

Mol	Chain	Non-H	H(model)	H(added)	Clashes	Symm-Clashes
1	A	2122	0	2143	49	0
2	B	1735	0	1728	21	0
3	C	2584	0	2486	45	0
4	D	418	0	435	4	0
4	E	1778	0	1716	34	0

Continued on next page...

Continued from previous page...

Mol	Chain	Non-H	H(model)	H(added)	Clashes	Symm-Clashes
5	A	19	0	0	0	0
All	All	8656	0	8508	148	0

The all-atom clashscore is defined as the number of clashes found per 1000 atoms (including hydrogen atoms). The all-atom clashscore for this structure is 9.

All (148) close contacts within the same asymmetric unit are listed below, sorted by their clash magnitude.

Atom-1	Atom-2	Interatomic distance (Å)	Clash overlap (Å)
1:A:85:ALA:HB2	1:A:165:TRP:CZ3	2.05	0.91
1:A:85:ALA:HB2	1:A:165:TRP:CH2	2.09	0.88
1:A:85:ALA:CB	1:A:165:TRP:CZ3	2.69	0.74
1:A:85:ALA:CB	1:A:165:TRP:CH2	2.69	0.74
3:C:115:GLY:HA3	3:C:146:LEU:HD23	1.73	0.71
4:E:69:THR:HB	4:E:82:GLN:HB2	1.74	0.70
3:C:22:ARG:O	3:C:259:GLN:NE2	2.28	0.66
2:B:52:GLN:HE21	2:B:53:MET:H	1.44	0.64
3:C:286:LEU:HG	3:C:296:VAL:HG12	1.80	0.63
4:E:63:THR:HG23	4:E:64:VAL:HG13	1.80	0.63
3:C:320:VAL:HG22	3:C:327:VAL:HG22	1.81	0.63
4:E:67:ARG:NH2	4:E:90:ASP:OD1	2.28	0.63
4:E:179:GLN:HB2	4:E:185:PRO:HB3	1.79	0.62
2:B:259:PHE:O	2:B:317:LYS:NZ	2.32	0.62
3:C:157:ILE:HG23	3:C:171:ILE:HD11	1.81	0.61
4:E:91:THR:HG21	4:E:119:VAL:H	1.66	0.61
1:A:93:PRO:HG3	1:A:119:VAL:HG13	1.82	0.60
2:B:251:ASP:HB2	2:B:310:LEU:HD23	1.84	0.59
1:A:155:TRP:C	1:A:158:PRO:HD2	2.23	0.59
2:B:325:CYS:SG	2:B:327:THR:OG1	2.61	0.58
1:A:235:LYS:NZ	2:B:318:GLU:OE1	2.36	0.58
4:E:91:THR:HG23	4:E:117:LEU:HB2	1.86	0.58
3:C:96:ARG:NH1	3:C:138:GLU:OE2	2.37	0.57
3:C:233:CYS:SG	3:C:234:PHE:N	2.77	0.56
4:E:14:PRO:HA	4:E:86:LEU:HB3	1.87	0.56
4:E:40:ALA:HB3	4:E:43:LYS:HB2	1.88	0.56
4:E:118:THR:HG22	4:E:119:VAL:HG13	1.88	0.56
1:A:58:ASN:HB2	1:A:87:LEU:HD12	1.88	0.55
3:C:47:THR:HA	3:C:339:TRP:HD1	1.72	0.55
4:E:58:ILE:HG22	4:E:58:ILE:O	2.06	0.55
1:A:175:ASN:HD21	1:A:181:LEU:HD11	1.72	0.55
3:C:164:THR:HG22	3:C:185:GLY:HA2	1.88	0.55

Continued on next page...

Continued from previous page...

Atom-1	Atom-2	Interatomic distance (Å)	Clash overlap (Å)
1:A:142:ILE:HD12	2:B:348:LEU:HD12	1.88	0.55
3:C:271:CYS:HB3	3:C:290:ASP:HB3	1.90	0.54
1:A:303:LEU:HD12	1:A:306:ILE:HD11	1.90	0.54
3:C:159:THR:HG1	3:C:169:TRP:HE1	1.53	0.54
1:A:139:TYR:HA	1:A:223:ILE:HD11	1.90	0.53
3:C:206:ALA:HB1	3:C:225:HIS:HB2	1.91	0.53
1:A:96:LEU:HG	1:A:108:PHE:HE2	1.74	0.53
4:E:38:ARG:HG2	4:E:92:ALA:HB3	1.90	0.53
4:E:174:LEU:HD13	4:E:212:PHE:HD1	1.74	0.52
1:A:306:ILE:O	1:A:311:LEU:HD13	2.09	0.52
1:A:155:TRP:O	1:A:158:PRO:HD2	2.08	0.52
4:E:91:THR:HG21	4:E:119:VAL:N	2.23	0.52
3:C:14:LEU:HD23	3:C:17:GLN:HE22	1.73	0.52
4:E:39:GLN:HB2	4:E:45:LEU:HD23	1.91	0.52
4:E:174:LEU:HD13	4:E:212:PHE:CD1	2.45	0.51
2:B:272:ASP:N	2:B:272:ASP:OD1	2.43	0.51
2:B:255:ASN:HD22	2:B:312:LYS:HG3	1.76	0.51
3:C:28:ALA:HB1	3:C:32:GLN:HE22	1.76	0.51
3:C:29:THR:O	3:C:32:GLN:NE2	2.44	0.50
4:E:160:ARG:NH1	4:E:160:ARG:HB2	2.25	0.50
1:A:92:TYR:HB2	1:A:93:PRO:HD3	1.93	0.50
1:A:274:VAL:HG12	1:A:282:ALA:HA	1.94	0.50
3:C:30:LEU:O	3:C:34:THR:HG22	2.12	0.50
4:D:17:GLN:HA	4:D:20:LYS:HE2	1.94	0.50
4:E:87:ARG:H	4:E:90:ASP:HB2	1.75	0.50
3:C:230:ASN:ND2	3:C:246:ASP:OD1	2.44	0.50
4:E:202:ARG:NH2	4:E:223:ASP:OD1	2.42	0.49
3:C:266:HIS:HB3	3:C:269:ILE:HG12	1.95	0.48
1:A:209:PHE:O	1:A:213:ILE:HG12	2.13	0.48
1:A:129:TRP:HZ2	1:A:207:ILE:HG13	1.78	0.48
1:A:164:ILE:HA	1:A:167:LEU:HD12	1.96	0.48
4:E:91:THR:HG23	4:E:117:LEU:CB	2.44	0.48
1:A:77:LEU:HD11	1:A:157:THR:HG22	1.96	0.48
1:A:300:ASN:HA	1:A:303:LEU:HB2	1.96	0.48
3:C:234:PHE:CE2	3:C:238:GLY:HA2	2.48	0.48
3:C:249:THR:HB	3:C:251:ARG:HE	1.79	0.48
1:A:87:LEU:HD21	1:A:91:PHE:CZ	2.49	0.48
1:A:263:CYS:SG	1:A:296:LEU:HB3	2.54	0.48
1:A:202:ALA:O	1:A:205:VAL:N	2.47	0.47
2:B:275:GLU:OE2	2:B:279:LYS:NZ	2.46	0.47
1:A:201:THR:O	1:A:205:VAL:HG23	2.15	0.47

Continued on next page...

Continued from previous page...

Atom-1	Atom-2	Interatomic distance (Å)	Clash overlap (Å)
4:E:53:SER:HA	4:E:72:ARG:NH1	2.29	0.47
3:C:183:HIS:HD2	3:C:209:LYS:HE2	1.79	0.47
4:E:166:LEU:HA	4:E:172:THR:HG22	1.97	0.47
3:C:15:LYS:HA	3:C:18:ILE:HG22	1.95	0.47
3:C:45:MET:SD	3:C:308:LEU:HD21	2.55	0.47
3:C:71:VAL:HG21	3:C:112:VAL:HG21	1.97	0.47
3:C:202:GLY:HA3	3:C:229:ILE:HG21	1.96	0.47
3:C:25:CYS:HB3	3:C:259:GLN:NE2	2.29	0.47
1:A:54:ASP:O	1:A:58:ASN:ND2	2.48	0.47
1:A:63:LEU:HD11	1:A:322:ILE:HD12	1.97	0.47
3:C:79:LEU:HB3	3:C:93:ILE:HB	1.96	0.47
1:A:40:ALA:HA	1:A:43:LEU:HD12	1.98	0.46
4:E:22:CYS:HB3	4:E:79:LEU:HB3	1.96	0.46
3:C:308:LEU:HD23	3:C:339:TRP:CE3	2.51	0.46
1:A:307:VAL:HG23	1:A:308:TYR:CD1	2.51	0.46
4:E:65:LYS:HD2	4:E:66:GLY:N	2.30	0.46
1:A:187:ILE:HG23	1:A:189:SER:H	1.82	0.45
1:A:219:CYS:O	1:A:223:ILE:HG12	2.17	0.45
2:B:45:GLY:HA2	2:B:269:ASN:HD22	1.81	0.45
3:C:9:GLN:HG3	3:C:13:GLN:HE22	1.81	0.45
3:C:161:SER:OG	3:C:163:ASP:OD1	2.33	0.45
4:E:142:GLN:HG3	4:E:159:CYS:HA	1.97	0.45
1:A:291:VAL:O	1:A:295:LEU:HG	2.17	0.45
3:C:47:THR:HG1	3:C:339:TRP:HE1	1.65	0.45
1:A:79:LEU:HD11	1:A:308:TYR:HB3	1.99	0.44
1:A:175:ASN:ND2	1:A:181:LEU:HD11	2.32	0.44
3:C:262:MET:SD	3:C:302:ALA:HB2	2.57	0.44
3:C:13:GLN:O	3:C:17:GLN:OE1	2.35	0.44
3:C:228:ASP:HB2	3:C:246:ASP:HB2	2.00	0.44
4:D:17:GLN:HG2	4:D:20:LYS:HE2	1.99	0.44
4:E:95:TYR:HD1	4:E:111:TRP:HE3	1.64	0.44
2:B:7:ALA:HB3	4:E:173:TYR:HE2	1.82	0.44
3:C:254:ASP:OD1	3:C:255:LEU:N	2.51	0.44
1:A:166:LEU:O	1:A:170:VAL:HG23	2.18	0.44
1:A:180:SER:O	1:A:181:LEU:HB2	2.18	0.44
1:A:213:ILE:HD12	1:A:261:ALA:HB2	1.99	0.44
2:B:47:SER:HA	2:B:50:VAL:HG22	1.98	0.44
2:B:186:GLU:HG2	2:B:199:PHE:CD1	2.53	0.44
1:A:51:THR:O	1:A:55:VAL:HG12	2.17	0.44
3:C:47:THR:HA	3:C:339:TRP:CD1	2.52	0.44
3:C:51:LEU:HD23	3:C:82:TRP:CD2	2.53	0.43

Continued on next page...

Continued from previous page...

Atom-1	Atom-2	Interatomic distance (Å)	Clash overlap (Å)
4:E:61:ALA:HB3	4:E:64:VAL:HG22	1.99	0.43
2:B:276:GLU:HA	2:B:279:LYS:HZ3	1.84	0.43
4:E:38:ARG:CG	4:E:92:ALA:HB3	2.49	0.43
2:B:248:LYS:HB2	2:B:248:LYS:HE2	1.44	0.42
2:B:51:LYS:O	2:B:52:GLN:C	2.57	0.42
3:C:274:THR:HG21	3:C:316:SER:HA	2.01	0.42
1:A:77:LEU:O	1:A:80:VAL:HG22	2.20	0.42
1:A:92:TYR:O	1:A:96:LEU:HD13	2.20	0.42
4:E:174:LEU:HG	4:E:230:MET:O	2.20	0.42
1:A:59:LEU:HG	1:A:87:LEU:HD11	2.01	0.42
1:A:266:PRO:O	1:A:270:ILE:HG12	2.19	0.41
1:A:85:ALA:CB	1:A:165:TRP:HZ3	2.26	0.41
3:C:57:LYS:HD2	3:C:332:TRP:CD2	2.55	0.41
2:B:15:ARG:O	2:B:19:ILE:HG12	2.20	0.41
4:E:116:THR:O	4:E:117:LEU:HD22	2.20	0.41
3:C:51:LEU:HD23	3:C:82:TRP:CE3	2.56	0.41
2:B:184:ILE:HD13	3:C:117:LEU:HD13	2.01	0.41
2:B:227:LEU:HD23	2:B:227:LEU:HA	1.93	0.41
3:C:25:CYS:HB3	3:C:259:GLN:HE22	1.85	0.41
3:C:281:SER:OG	4:D:48:ASP:OD2	2.30	0.41
4:E:219:LEU:HD11	4:E:245:LEU:HD21	2.01	0.41
1:A:211:LEU:HB3	1:A:212:PRO:HD3	2.03	0.41
2:B:227:LEU:HD21	2:B:303:ILE:HG21	2.02	0.41
3:C:13:GLN:O	3:C:16:ASN:HB2	2.20	0.41
1:A:201:THR:HG21	1:A:275:ALA:HB2	2.03	0.41
1:A:204:VAL:O	1:A:208:HIS:HB3	2.21	0.41
1:A:82:LEU:HD11	1:A:131:ILE:HG22	2.03	0.41
4:E:41:PRO:O	4:E:43:LYS:HG3	2.21	0.41
2:B:184:ILE:HD11	2:B:215:PHE:HZ	1.87	0.40
4:E:149:VAL:HG12	4:E:155:VAL:HG21	2.03	0.40
4:E:183:GLN:OE1	4:E:183:GLN:N	2.54	0.40
1:A:85:ALA:CB	1:A:165:TRP:HH2	2.27	0.40
4:D:57:SER:OG	4:D:58:GLN:OE1	2.30	0.40
3:C:315:VAL:HA	3:C:331:SER:HA	2.04	0.40

There are no symmetry-related clashes.

5.3 Torsion angles [i](#)

5.3.1 Protein backbone [i](#)

In the following table, the Percentiles column shows the percent Ramachandran outliers of the chain as a percentile score with respect to all PDB entries followed by that with respect to all EM entries.

The Analysed column shows the number of residues for which the backbone conformation was analysed, and the total number of residues.

Mol	Chain	Analysed	Favoured	Allowed	Outliers	Percentiles	
1	A	269/362 (74%)	239 (89%)	29 (11%)	1 (0%)	34	70
2	B	209/354 (59%)	202 (97%)	6 (3%)	1 (0%)	29	66
3	C	334/353 (95%)	324 (97%)	10 (3%)	0	100	100
4	D	52/323 (16%)	50 (96%)	2 (4%)	0	100	100
4	E	227/323 (70%)	205 (90%)	21 (9%)	1 (0%)	34	70
All	All	1091/1715 (64%)	1020 (94%)	68 (6%)	3 (0%)	44	75

All (3) Ramachandran outliers are listed below:

Mol	Chain	Res	Type
2	B	52	GLN
1	A	39	VAL
4	E	145	SER

5.3.2 Protein sidechains [i](#)

In the following table, the Percentiles column shows the percent sidechain outliers of the chain as a percentile score with respect to all PDB entries followed by that with respect to all EM entries.

The Analysed column shows the number of residues for which the sidechain conformation was analysed, and the total number of residues.

Mol	Chain	Analysed	Rotameric	Outliers	Percentiles	
1	A	219/303 (72%)	208 (95%)	11 (5%)	24	56
2	B	191/304 (63%)	177 (93%)	14 (7%)	14	45
3	C	279/295 (95%)	279 (100%)	0	100	100
4	D	44/263 (17%)	44 (100%)	0	100	100
4	E	196/263 (74%)	189 (96%)	7 (4%)	35	66

Continued on next page...

Continued from previous page...

Mol	Chain	Analysed	Rotameric	Outliers	Percentiles
All	All	929/1428 (65%)	897 (97%)	32 (3%)	40 67

All (32) residues with a non-rotameric sidechain are listed below:

Mol	Chain	Res	Type
1	A	39	VAL
1	A	140	LEU
1	A	141	TYR
1	A	146	MET
1	A	154	ARG
1	A	189	SER
1	A	197	SER
1	A	198	THR
1	A	252	THR
1	A	300	ASN
1	A	301	SER
2	B	52	GLN
2	B	53	MET
2	B	54	LYS
2	B	182	THR
2	B	184	ILE
2	B	204	GLN
2	B	225	VAL
2	B	228	SER
2	B	229	ASP
2	B	232	LEU
2	B	242	ARG
2	B	248	LYS
2	B	249	LEU
2	B	328	ASP
4	E	136	SER
4	E	137	ASP
4	E	139	VAL
4	E	140	MET
4	E	144	THR
4	E	146	SER
4	E	150	THR

Sometimes sidechains can be flipped to improve hydrogen bonding and reduce clashes. All (8) such sidechains are listed below:

Mol	Chain	Res	Type
1	A	58	ASN
1	A	130	ASN
1	A	175	ASN
1	A	300	ASN
1	A	304	ASN
2	B	52	GLN
3	C	32	GLN
3	C	259	GLN

5.3.3 RNA [i](#)

There are no RNA molecules in this entry.

5.4 Non-standard residues in protein, DNA, RNA chains [i](#)

There are no non-standard protein/DNA/RNA residues in this entry.

5.5 Carbohydrates [i](#)

There are no monosaccharides in this entry.

5.6 Ligand geometry [i](#)

1 ligand is modelled in this entry.

In the following table, the Counts columns list the number of bonds (or angles) for which Mogul statistics could be retrieved, the number of bonds (or angles) that are observed in the model and the number of bonds (or angles) that are defined in the Chemical Component Dictionary. The Link column lists molecule types, if any, to which the group is linked. The Z score for a bond length (or angle) is the number of standard deviations the observed value is removed from the expected value. A bond length (or angle) with $|Z| > 2$ is considered an outlier worth inspection. RMSZ is the root-mean-square of all Z scores of the bond lengths (or angles).

Mol	Type	Chain	Res	Link	Bond lengths			Bond angles		
					Counts	RMSZ	$\# Z > 2$	Counts	RMSZ	$\# Z > 2$
5	JEV	A	401	-	21,21,21	2.52	10 (47%)	21,29,29	1.70	4 (19%)

In the following table, the Chirals column lists the number of chiral outliers, the number of chiral centers analysed, the number of these observed in the model and the number defined in the Chemical Component Dictionary. Similar counts are reported in the Torsion and Rings columns. '2' means no outliers of that kind were identified.

Mol	Type	Chain	Res	Link	Chirals	Torsions	Rings
5	JEV	A	401	-	-	2/8/23/23	0/3/3/3

All (10) bond length outliers are listed below:

Mol	Chain	Res	Type	Atoms	Z	Observed(Å)	Ideal(Å)
5	A	401	JEV	O1-C15	-5.50	1.35	1.45
5	A	401	JEV	C3-N1	5.33	1.45	1.33
5	A	401	JEV	O1-C12	-3.70	1.32	1.38
5	A	401	JEV	C8-C9	3.62	1.56	1.51
5	A	401	JEV	C11-C12	3.07	1.46	1.39
5	A	401	JEV	C14-C13	-3.04	1.45	1.51
5	A	401	JEV	C16-C13	2.48	1.44	1.39
5	A	401	JEV	C12-C13	-2.45	1.34	1.39
5	A	401	JEV	C14-C15	-2.43	1.46	1.52
5	A	401	JEV	O2-C3	-2.23	1.18	1.23

All (4) bond angle outliers are listed below:

Mol	Chain	Res	Type	Atoms	Z	Observed(°)	Ideal(°)
5	A	401	JEV	C2-C3-N1	3.76	119.77	115.79
5	A	401	JEV	C15-O1-C12	3.37	110.84	107.21
5	A	401	JEV	C7-C8-C9	3.32	106.54	103.31
5	A	401	JEV	C11-C12-C13	-2.94	120.05	123.20

There are no chirality outliers.

All (2) torsion outliers are listed below:

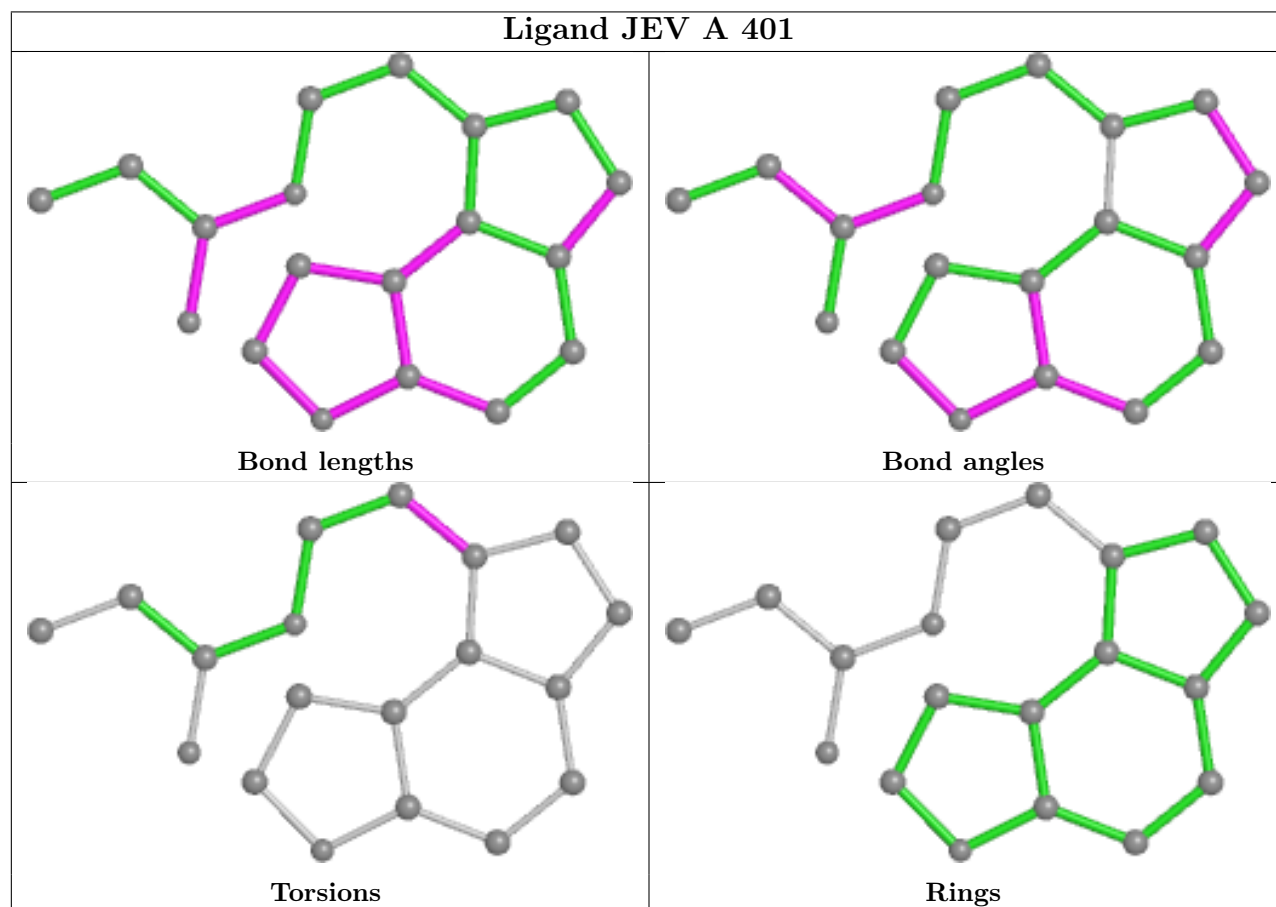
Mol	Chain	Res	Type	Atoms
5	A	401	JEV	C4-C5-C6-C7
5	A	401	JEV	C4-C5-C6-C16

There are no ring outliers.

No monomer is involved in short contacts.

The following is a two-dimensional graphical depiction of Mogul quality analysis of bond lengths, bond angles, torsion angles, and ring geometry for all instances of the Ligand of Interest. In addition, ligands with molecular weight > 250 and outliers as shown on the validation Tables will also be included. For torsion angles, if less than 5% of the Mogul distribution of torsion angles is within 10 degrees of the torsion angle in question, then that torsion angle is considered an outlier. Any bond that is central to one or more torsion angles identified as an outlier by Mogul will be highlighted in the graph. For rings, the root-mean-square deviation (RMSD) between the ring in question and similar rings identified by Mogul is calculated over all ring torsion angles. If the

average RMSD is greater than 60 degrees and the minimal RMSD between the ring in question and any Mogul-identified rings is also greater than 60 degrees, then that ring is considered an outlier. The outliers are highlighted in purple. The color gray indicates Mogul did not find sufficient equivalents in the CSD to analyse the geometry.



5.7 Other polymers [i](#)

There are no such residues in this entry.

5.8 Polymer linkage issues [i](#)

There are no chain breaks in this entry.

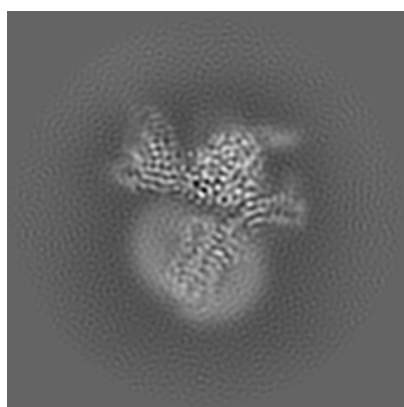
6 Map visualisation [i](#)

This section contains visualisations of the EMDB entry EMD-31982. These allow visual inspection of the internal detail of the map and identification of artifacts.

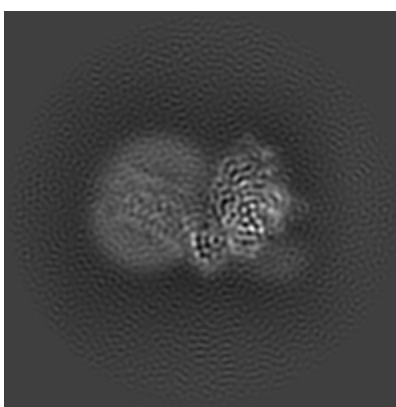
No raw map or half-maps were deposited for this entry and therefore no images, graphs, etc. pertaining to the raw map can be shown.

6.1 Orthogonal projections [i](#)

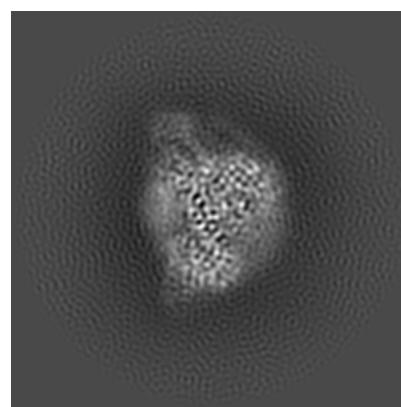
6.1.1 Primary map



X



Y

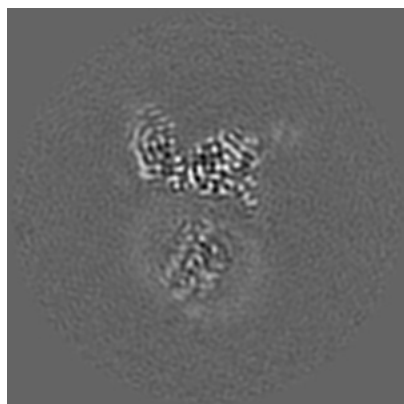


Z

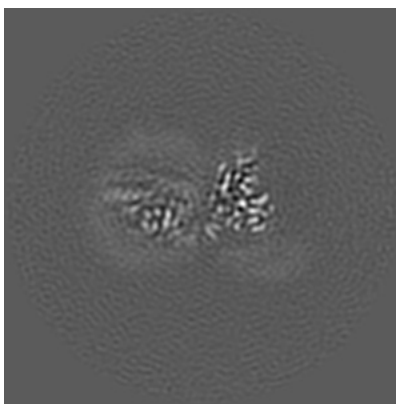
The images above show the map projected in three orthogonal directions.

6.2 Central slices [i](#)

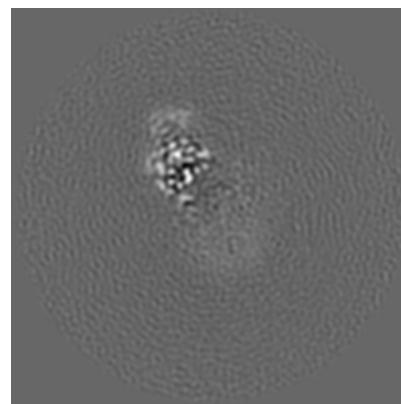
6.2.1 Primary map



X Index: 128



Y Index: 128

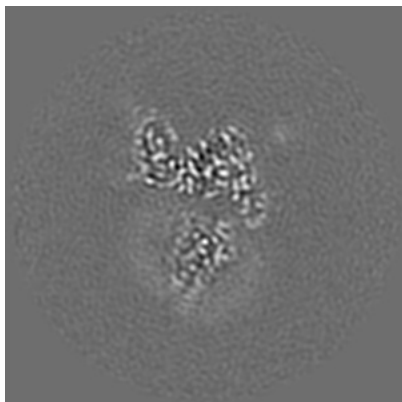


Z Index: 128

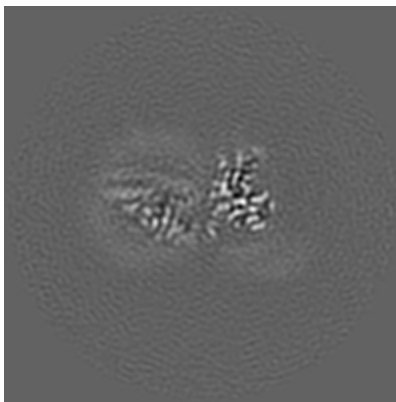
The images above show central slices of the map in three orthogonal directions.

6.3 Largest variance slices [i](#)

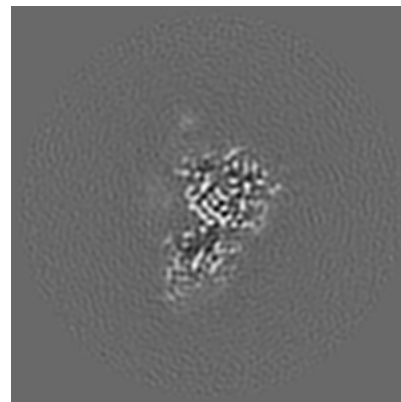
6.3.1 Primary map



X Index: 123



Y Index: 129



Z Index: 149

The images above show the largest variance slices of the map in three orthogonal directions.

6.4 Orthogonal surface views [i](#)

6.4.1 Primary map



X



Y



Z

The images above show the 3D surface view of the map at the recommended contour level 0.13. These images, in conjunction with the slice images, may facilitate assessment of whether an appropriate contour level has been provided.

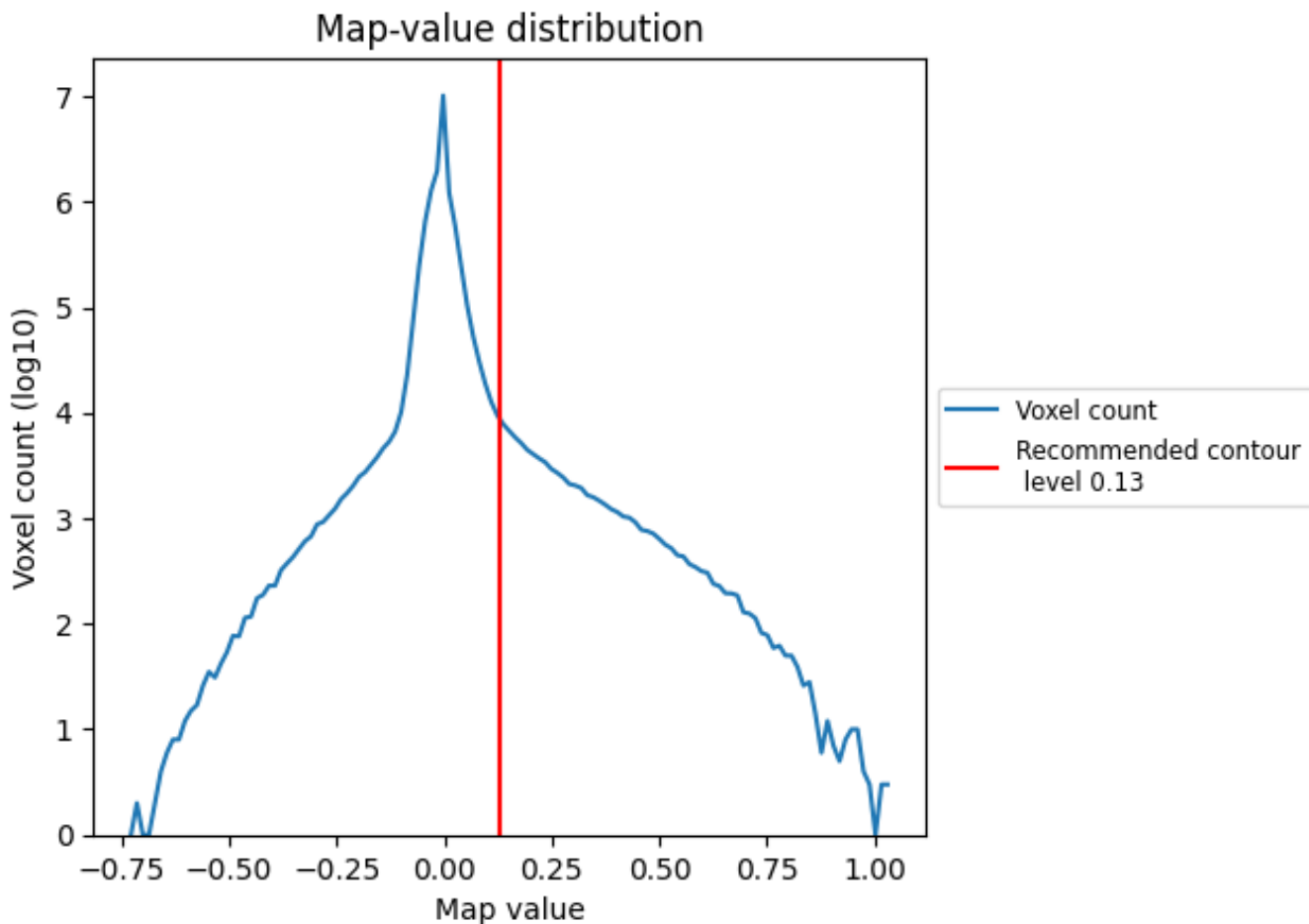
6.5 Mask visualisation

This section was not generated. No masks/segmentation were deposited.

7 Map analysis [i](#)

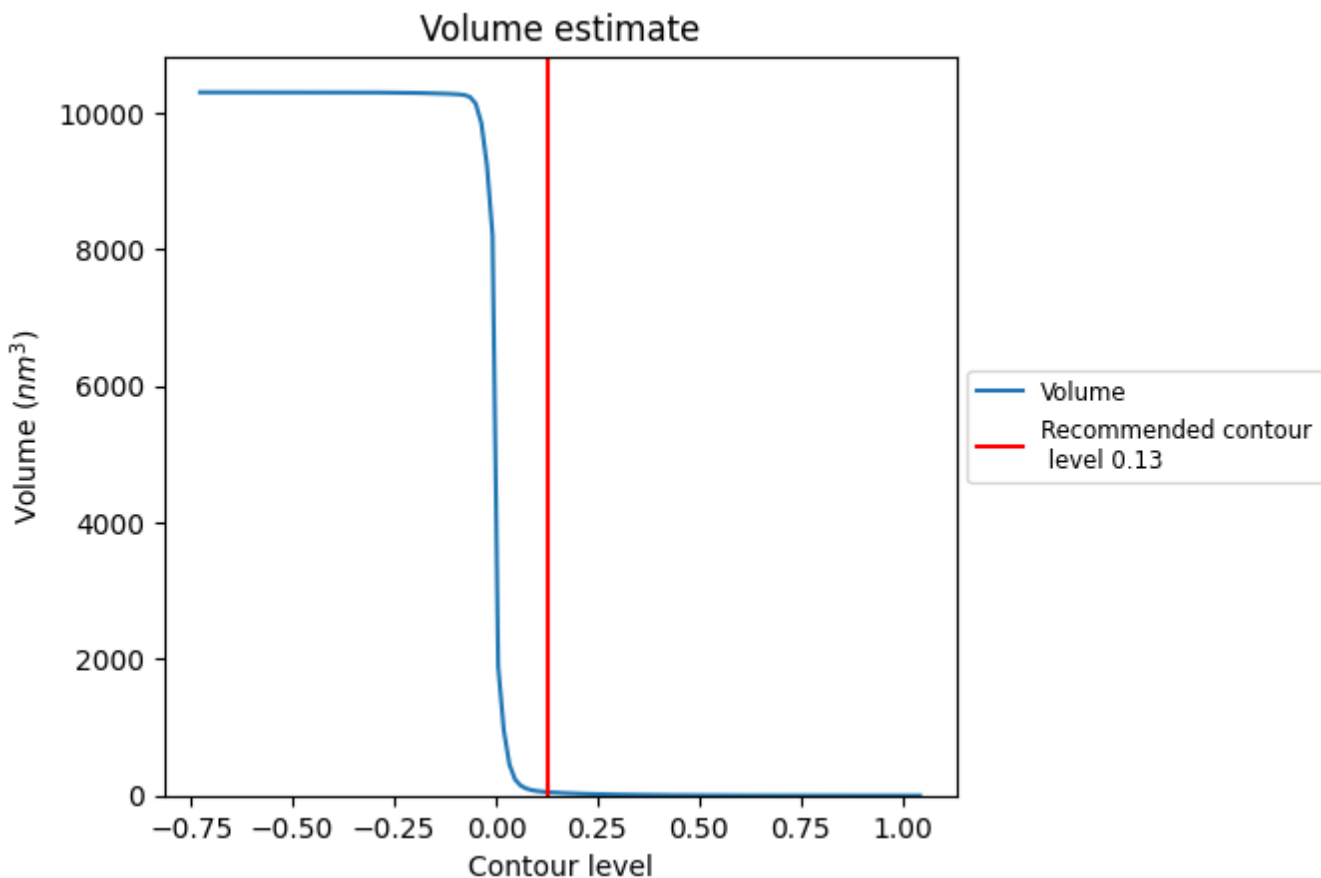
This section contains the results of statistical analysis of the map.

7.1 Map-value distribution [i](#)



The map-value distribution is plotted in 128 intervals along the x-axis. The y-axis is logarithmic. A spike in this graph at zero usually indicates that the volume has been masked.

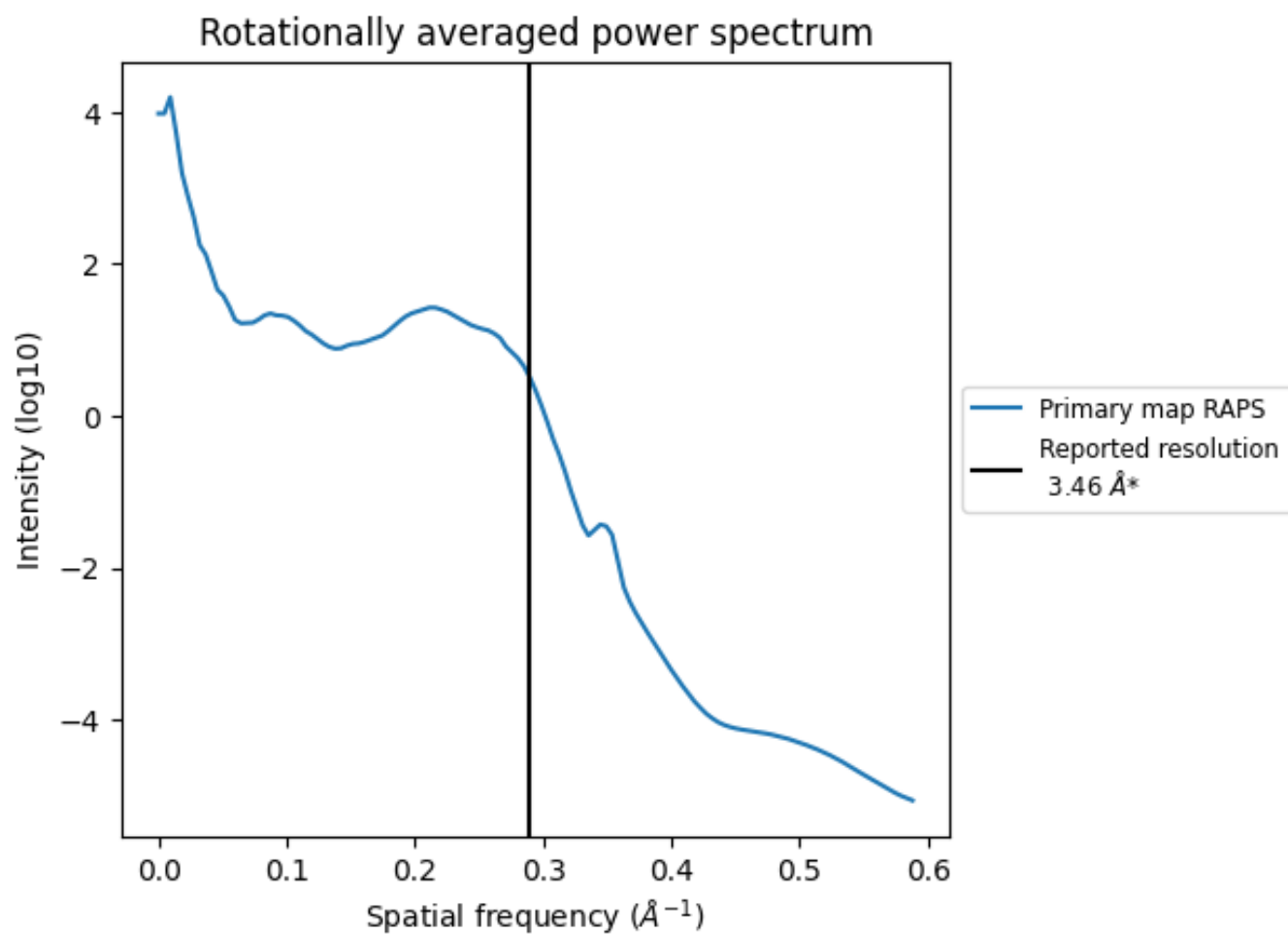
7.2 Volume estimate [i](#)



The volume at the recommended contour level is 49 nm³; this corresponds to an approximate mass of 44 kDa.

The volume estimate graph shows how the enclosed volume varies with the contour level. The recommended contour level is shown as a vertical line and the intersection between the line and the curve gives the volume of the enclosed surface at the given level.

7.3 Rotationally averaged power spectrum i



*Reported resolution corresponds to spatial frequency of 0.289 Å⁻¹

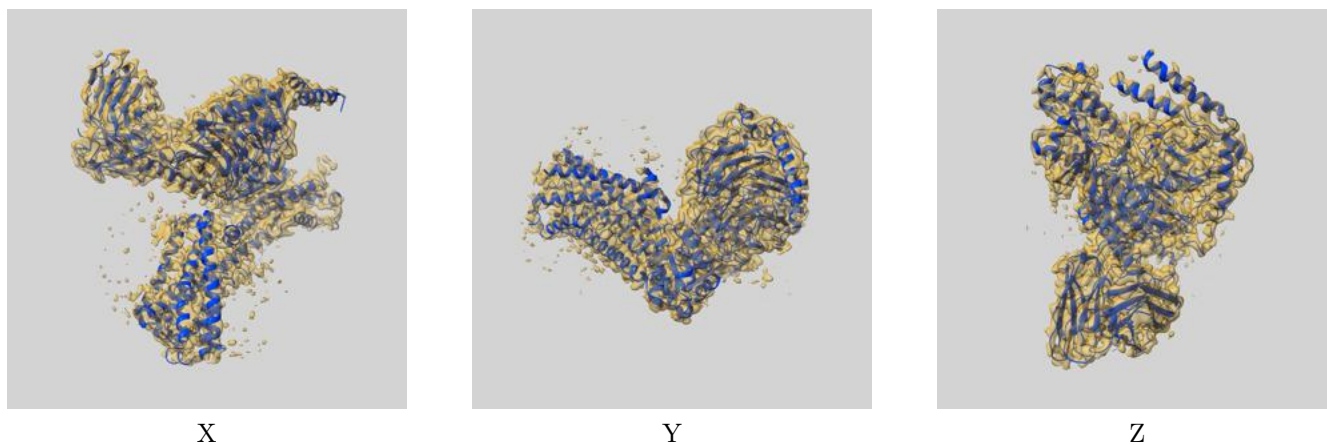
8 Fourier-Shell correlation

This section was not generated. No FSC curve or half-maps provided.

9 Map-model fit [i](#)

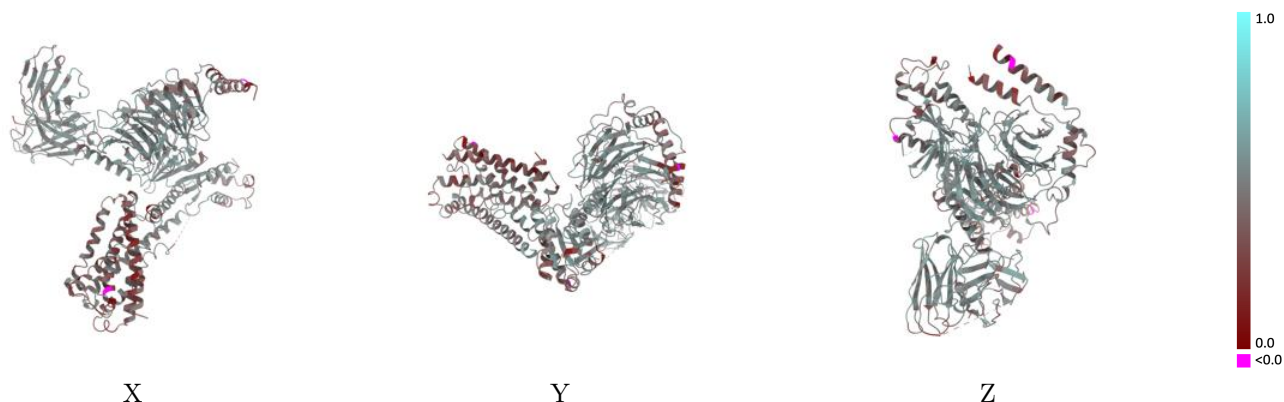
This section contains information regarding the fit between EMDB map EMD-31982 and PDB model 7VH0. Per-residue inclusion information can be found in section 3 on page 6.

9.1 Map-model overlay [i](#)



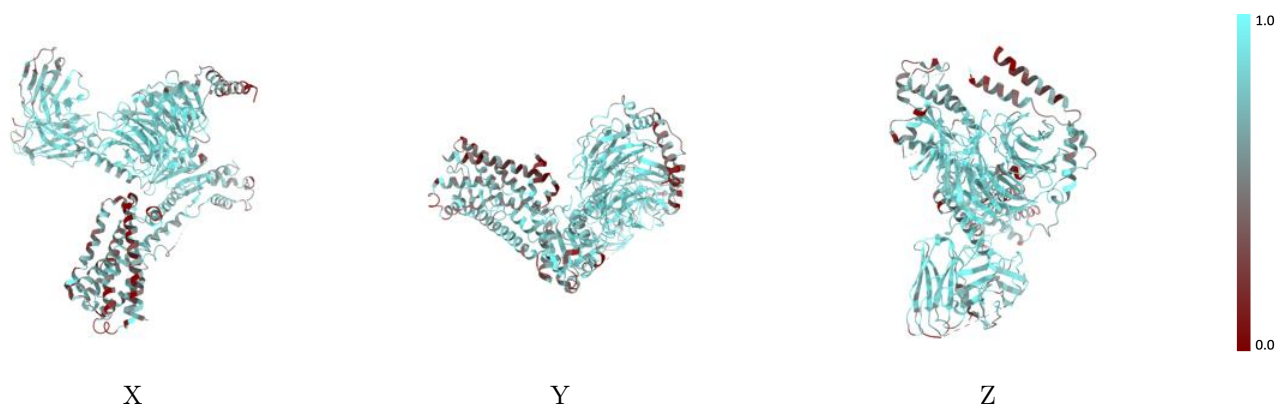
The images above show the 3D surface view of the map at the recommended contour level 0.13 at 50% transparency in yellow overlaid with a ribbon representation of the model coloured in blue. These images allow for the visual assessment of the quality of fit between the atomic model and the map.

9.2 Q-score mapped to coordinate model [\(i\)](#)



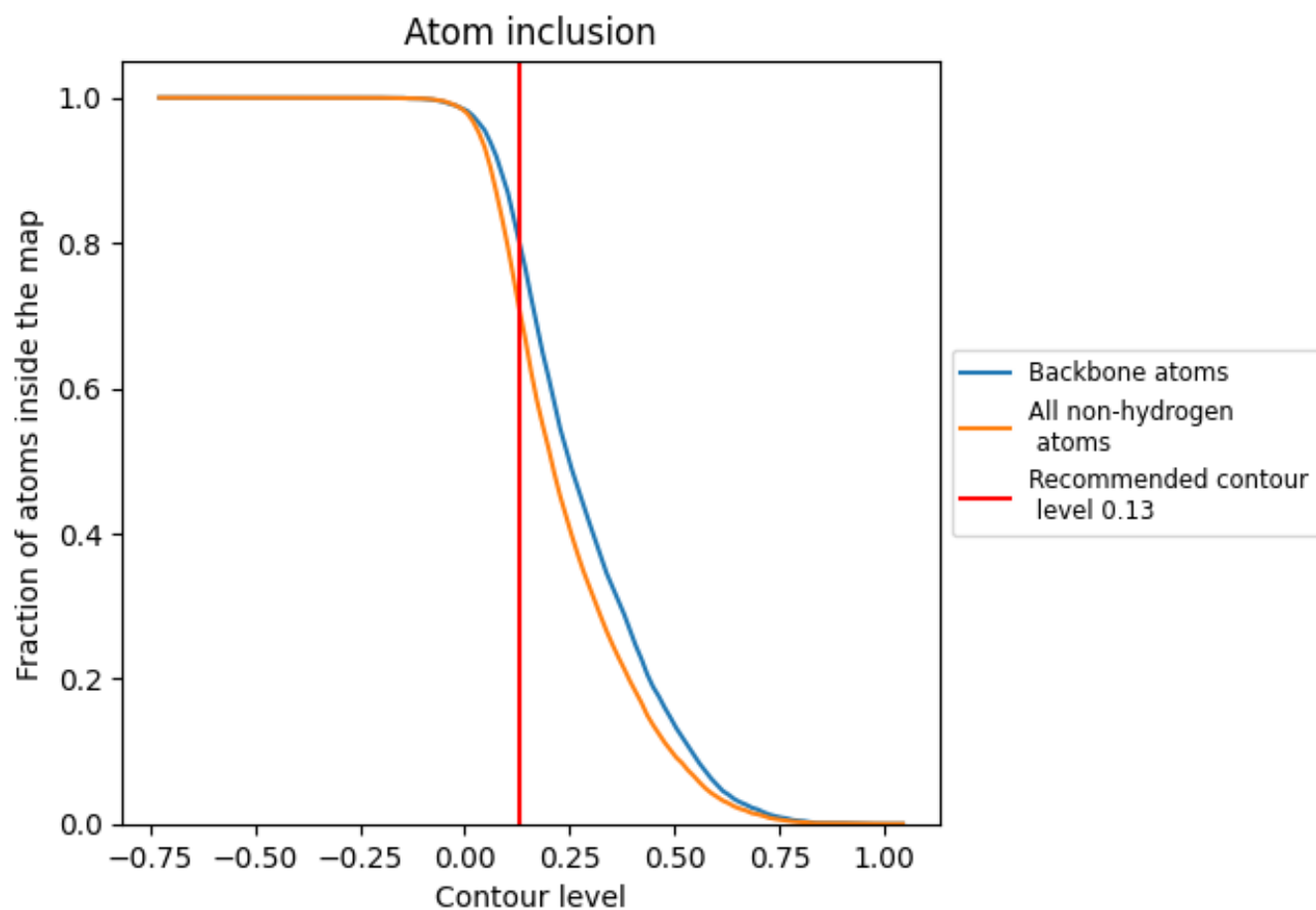
The images above show the model with each residue coloured according to its Q-score. This shows their resolvability in the map with higher Q-score values reflecting better resolvability. Please note: Q-score is calculating the resolvability of atoms, and thus high values are only expected at resolutions at which atoms can be resolved. Low Q-score values may therefore be expected for many entries.

9.3 Atom inclusion mapped to coordinate model [\(i\)](#)



The images above show the model with each residue coloured according to its atom inclusion. This shows to what extent they are inside the map at the recommended contour level (0.13).













9.4 Atom inclusion [i](#)



At the recommended contour level, 80% of all backbone atoms, 71% of all non-hydrogen atoms, are inside the map.

9.5 Map-model fit summary

The table lists the average atom inclusion at the recommended contour level (0.13) and Q-score for the entire model and for each chain.

Chain	Atom inclusion	Q-score
All	 0.7087	 0.4670
A	 0.5745	 0.3910
B	 0.7160	 0.4830
C	 0.7924	 0.5050
D	 0.6375	 0.4350
E	 0.7589	 0.4930

