



Full wwPDB X-ray Structure Validation Report ⓘ

May 24, 2020 – 10:29 am BST

PDB ID : 2VD7
Title : Crystal Structure of JMJD2A complexed with inhibitor Pyridine-2,4- dicarboxylic acid
Authors : Ng, S.S.; von Delft, F.; Pilka, E.S.; Kavanagh, K.L.; McDonough, M.A.; Savitsky, P.; Arrowsmith, C.H.; Weigelt, J.; Edwards, A.; Sundstrom, M.; Schofield, C.J.; Oppermann, U.
Deposited on : 2007-10-01
Resolution : 2.25 Å(reported)

This is a Full wwPDB X-ray Structure Validation Report for a publicly released PDB entry.

We welcome your comments at validation@mail.wwpdb.org

A user guide is available at

<https://www.wwpdb.org/validation/2017/XrayValidationReportHelp>

with specific help available everywhere you see the ⓘ symbol.

The following versions of software and data (see [references ⓘ](#)) were used in the production of this report:

MolProbity : 4.02b-467
Mogul : 1.8.5 (274361), CSD as541be (2020)
Xtriage (Phenix) : 1.13
EDS : 2.11
Percentile statistics : 20191225.v01 (using entries in the PDB archive December 25th 2019)
Refmac : 5.8.0158
CCP4 : 7.0.044 (Gargrove)
Ideal geometry (proteins) : Engh & Huber (2001)
Ideal geometry (DNA, RNA) : Parkinson et al. (1996)
Validation Pipeline (wwPDB-VP) : 2.11

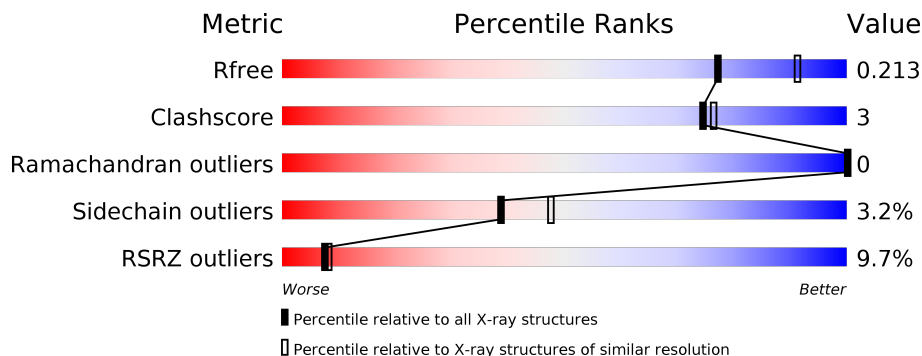
1 Overall quality at a glance i

The following experimental techniques were used to determine the structure:

X-RAY DIFFRACTION

The reported resolution of this entry is 2.25 Å.

Percentile scores (ranging between 0-100) for global validation metrics of the entry are shown in the following graphic. The table shows the number of entries on which the scores are based.



Metric	Whole archive (#Entries)	Similar resolution (#Entries, resolution range(Å))
R_{free}	130704	1377 (2.26-2.26)
Clashscore	141614	1487 (2.26-2.26)
Ramachandran outliers	138981	1449 (2.26-2.26)
Sidechain outliers	138945	1450 (2.26-2.26)
RSRZ outliers	127900	1356 (2.26-2.26)

The table below summarises the geometric issues observed across the polymeric chains and their fit to the electron density. The red, orange, yellow and green segments on the lower bar indicate the fraction of residues that contain outliers for ≥ 3 , 2, 1 and 0 types of geometric quality criteria respectively. A grey segment represents the fraction of residues that are not modelled. The numeric value for each fraction is indicated below the corresponding segment, with a dot representing fractions $\leq 5\%$. The upper red bar (where present) indicates the fraction of residues that have poor fit to the electron density. The numeric value is given above the bar.

Mol	Chain	Length	Quality of chain
1	A	381	 10% 82% 9% 8%
1	B	381	 8% 84% 7% 8%

2 Entry composition

There are 5 unique types of molecules in this entry. The entry contains 6009 atoms, of which 0 are hydrogens and 0 are deuteriums.

In the tables below, the ZeroOcc column contains the number of atoms modelled with zero occupancy, the AltConf column contains the number of residues with at least one atom in alternate conformation and the Trace column contains the number of residues modelled with at most 2 atoms.

- Molecule 1 is a protein called JMJC DOMAIN-CONTAINING HISTONE DEMETHYLATION PROTEIN 3A.

Mol	Chain	Residues	Atoms					ZeroOcc	AltConf	Trace
			Total	C	N	O	S			
1	A	350	2806	1822	459	510	15	0	3	0
1	B	349	2818	1825	468	510	15	0	3	0

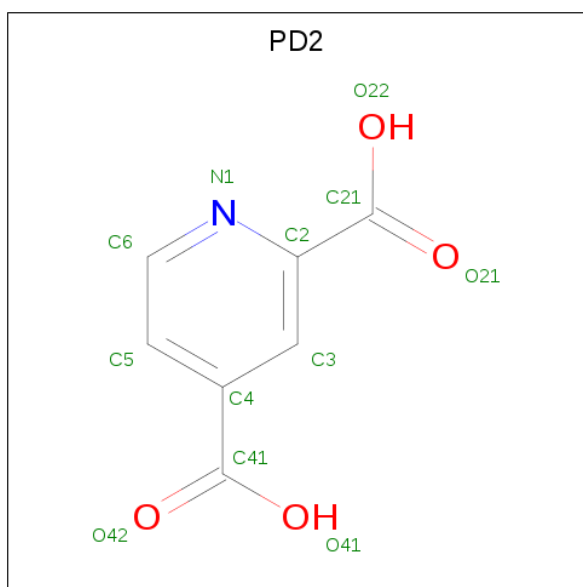
- Molecule 2 is NICKEL (II) ION (three-letter code: NI) (formula: Ni).

Mol	Chain	Residues	Atoms		ZeroOcc	AltConf
2	B	1	Total	Ni	0	0
			1	1		
2	A	1	Total	Ni	0	0
			1	1		

- Molecule 3 is ZINC ION (three-letter code: ZN) (formula: Zn).

Mol	Chain	Residues	Atoms		ZeroOcc	AltConf
3	B	1	Total	Zn	0	0
			1	1		
3	A	1	Total	Zn	0	0
			1	1		

- Molecule 4 is PYRIDINE-2,4-DICARBOXYLIC ACID (three-letter code: PD2) (formula: C₇H₅NO₄).



Mol	Chain	Residues	Atoms				ZeroOcc	AltConf
			Total	C	N	O		
4	A	1	12	7	1	4	0	0
4	B	1	12	7	1	4	0	0

- Molecule 5 is water.

Mol	Chain	Residues	Atoms		ZeroOcc	AltConf
			Total	O		
5	A	172	172	172	0	0
5	B	185	185	185	0	0

4 Data and refinement statistics

Property	Value	Source
Space group	P 21 21 2	Depositor
Cell constants a, b, c, α , β , γ	101.28Å 149.12Å 57.57Å 90.00° 90.00° 90.00°	Depositor
Resolution (Å)	37.63 – 2.25 36.84 – 2.25	Depositor EDS
% Data completeness (in resolution range)	98.6 (37.63-2.25) 98.6 (36.84-2.25)	Depositor EDS
R_{merge}	0.07	Depositor
R_{sym}	(Not available)	Depositor
$\langle I/\sigma(I) \rangle$ ¹	2.39 (at 2.24Å)	Xtrriage
Refinement program	REFMAC 5.3.0040	Depositor
R, R_{free}	0.170 , 0.219 0.168 , 0.213	Depositor DCC
R_{free} test set	1754 reflections (4.21%)	wwPDB-VP
Wilson B-factor (Å ²)	37.5	Xtrriage
Anisotropy	0.353	Xtrriage
Bulk solvent k_{sol} (e/Å ³), B_{sol} (Å ²)	0.34 , 47.0	EDS
L-test for twinning ²	$\langle L \rangle = 0.49$, $\langle L^2 \rangle = 0.32$	Xtrriage
Estimated twinning fraction	No twinning to report.	Xtrriage
F_o, F_c correlation	0.96	EDS
Total number of atoms	6009	wwPDB-VP
Average B, all atoms (Å ²)	43.0	wwPDB-VP

Xtrriage's analysis on translational NCS is as follows: *The largest off-origin peak in the Patterson function is 9.33% of the height of the origin peak. No significant pseudotranslation is detected.*

¹Intensities estimated from amplitudes.

²Theoretical values of $\langle |L| \rangle$, $\langle L^2 \rangle$ for acentric reflections are 0.5, 0.333 respectively for untwinned datasets, and 0.375, 0.2 for perfectly twinned datasets.

5 Model quality [i](#)

5.1 Standard geometry [i](#)

Bond lengths and bond angles in the following residue types are not validated in this section: NI, ZN, PD2

The Z score for a bond length (or angle) is the number of standard deviations the observed value is removed from the expected value. A bond length (or angle) with $|Z| > 5$ is considered an outlier worth inspection. RMSZ is the root-mean-square of all Z scores of the bond lengths (or angles).

Mol	Chain	Bond lengths		Bond angles	
		RMSZ	# $ Z > 5$	RMSZ	# $ Z > 5$
1	A	0.72	3/2899 (0.1%)	0.71	2/3944 (0.1%)
1	B	0.68	0/2911	0.68	0/3958
All	All	0.70	3/5810 (0.1%)	0.69	2/7902 (0.0%)

All (3) bond length outliers are listed below:

Mol	Chain	Res	Type	Atoms	Z	Observed(Å)	Ideal(Å)
1	A	98	ARG	CZ-NH1	7.85	1.43	1.33
1	A	63	ASP	C-O	6.13	1.35	1.23
1	A	95	ARG	CZ-NH1	5.06	1.39	1.33

All (2) bond angle outliers are listed below:

Mol	Chain	Res	Type	Atoms	Z	Observed(°)	Ideal(°)
1	A	98	ARG	NE-CZ-NH2	-9.28	115.66	120.30
1	A	98	ARG	NE-CZ-NH1	6.24	123.42	120.30

There are no chirality outliers.

There are no planarity outliers.

5.2 Too-close contacts [i](#)

In the following table, the Non-H and H(model) columns list the number of non-hydrogen atoms and hydrogen atoms in the chain respectively. The H(added) column lists the number of hydrogen atoms added and optimized by MolProbity. The Clashes column lists the number of clashes within the asymmetric unit, whereas Symm-Clashes lists symmetry related clashes.

Mol	Chain	Non-H	H(model)	H(added)	Clashes	Symm-Clashes
1	A	2806	0	2628	22	0

Continued on next page...

Continued from previous page...

Mol	Chain	Non-H	H(model)	H(added)	Clashes	Symm-Clashes
1	B	2818	0	2655	13	0
2	A	1	0	0	0	0
2	B	1	0	0	0	0
3	A	1	0	0	0	0
3	B	1	0	0	0	0
4	A	12	0	3	0	0
4	B	12	0	3	0	0
5	A	172	0	0	3	0
5	B	185	0	0	1	0
All	All	6009	0	5289	35	0

The all-atom clashscore is defined as the number of clashes found per 1000 atoms (including hydrogen atoms). The all-atom clashscore for this structure is 3.

All (35) close contacts within the same asymmetric unit are listed below, sorted by their clash magnitude.

Atom-1	Atom-2	Interatomic distance (Å)	Clash overlap (Å)
1:B:142[B]:GLU:HG3	1:B:145:VAL:HG23	1.78	0.66
1:A:210[B]:SER:OG	5:A:2104:HOH:O	2.13	0.66
5:A:2113:HOH:O	1:B:13:ARG:HD2	1.99	0.62
1:A:327:GLU:OE1	1:A:327:GLU:N	2.27	0.60
1:B:74:LEU:HD23	1:B:87:ILE:HD12	1.82	0.60
1:A:95:ARG:HH11	1:A:95:ARG:HB3	1.67	0.59
1:B:155:THR:HG21	1:B:291:PHE:HB2	1.84	0.59
1:A:95:ARG:HH11	1:A:95:ARG:CB	2.17	0.57
1:A:301:LYS:HE3	1:A:332:TRP:CD1	2.41	0.55
1:A:309:ARG:HB2	1:A:312:MET:HG2	1.92	0.51
1:A:222:LEU:HG	1:A:226:PHE:CE2	2.47	0.50
1:A:125:LEU:N	1:A:125:LEU:HD23	2.26	0.50
1:A:82:PHE:HB2	1:A:244:LEU:HB2	1.94	0.49
1:A:218:ARG:HD2	5:A:2110:HOH:O	2.12	0.49
1:A:13:ARG:HG3	1:A:258:ASP:OD2	2.13	0.49
1:B:71:ILE:HG23	1:B:86:ASN:HB3	1.94	0.48
1:B:153:LEU:HD11	1:B:197:ILE:HG21	1.95	0.47
1:A:342:ASP:HB3	1:A:345:LEU:HD22	1.96	0.47
1:B:154:ARG:HA	1:B:158:ASP:OD2	2.16	0.46
1:A:98:ARG:HG3	1:A:283:PHE:CE2	2.50	0.45
1:A:95:ARG:NH1	1:A:95:ARG:CB	2.79	0.45
1:A:153:LEU:HD11	1:A:197:ILE:HG21	2.00	0.44
1:A:19:PRO:HB3	1:A:30:TYR:CE1	2.53	0.43
1:A:169:GLU:HA	1:A:173:THR:OG1	2.18	0.43

Continued on next page...

Continued from previous page...

Atom-1	Atom-2	Interatomic distance (Å)	Clash overlap (Å)
1:A:125:LEU:H	1:A:125:LEU:HD23	1.83	0.42
1:B:105:LYS:HE3	1:B:128:ASN:OD1	2.19	0.42
1:B:98:ARG:NH2	5:B:2050:HOH:O	2.52	0.42
1:A:309:ARG:HB2	1:A:312:MET:CG	2.50	0.42
1:B:19:PRO:HD2	1:B:48:VAL:O	2.19	0.42
1:A:74:LEU:HD23	1:A:87:ILE:HD12	2.02	0.41
1:B:63:ASP:CG	1:B:98:ARG:HH12	2.24	0.41
1:B:9:ASN:N	1:B:10:PRO:HD3	2.35	0.41
1:A:21:MET:O	1:A:25:ARG:HG3	2.21	0.41
1:B:74:LEU:HD23	1:B:87:ILE:CD1	2.49	0.40
1:A:306:CYS:SG	1:A:312:MET:HG3	2.62	0.40

There are no symmetry-related clashes.

5.3 Torsion angles [i](#)

5.3.1 Protein backbone [i](#)

In the following table, the Percentiles column shows the percent Ramachandran outliers of the chain as a percentile score with respect to all X-ray entries followed by that with respect to entries of similar resolution.

The Analysed column shows the number of residues for which the backbone conformation was analysed, and the total number of residues.

Mol	Chain	Analysed	Favoured	Allowed	Outliers	Percentiles	
1	A	351/381 (92%)	344 (98%)	7 (2%)	0	100	100
1	B	350/381 (92%)	347 (99%)	3 (1%)	0	100	100
All	All	701/762 (92%)	691 (99%)	10 (1%)	0	100	100

There are no Ramachandran outliers to report.

5.3.2 Protein sidechains [i](#)

In the following table, the Percentiles column shows the percent sidechain outliers of the chain as a percentile score with respect to all X-ray entries followed by that with respect to entries of similar resolution.

The Analysed column shows the number of residues for which the sidechain conformation was analysed, and the total number of residues.

Mol	Chain	Analysed	Rotameric	Outliers	Percentiles	
1	A	283/335 (84%)	272 (96%)	11 (4%)	32	38
1	B	288/335 (86%)	281 (98%)	7 (2%)	49	58
All	All	571/670 (85%)	553 (97%)	18 (3%)	39	47

All (18) residues with a non-rotameric sidechain are listed below:

Mol	Chain	Res	Type
1	A	8	LEU
1	A	79	SER
1	A	98	ARG
1	A	104	ASP
1	A	132	TYR
1	A	175	TYR
1	A	233	SER
1	A	306	CYS
1	A	310	LYS
1	A	318	ASP
1	A	345	LEU
1	B	58	SER
1	B	113	GLU
1	B	132	TYR
1	B	164	SER
1	B	175	TYR
1	B	259	LYS
1	B	318	ASP

Some sidechains can be flipped to improve hydrogen bonding and reduce clashes. There are no such sidechains identified.

5.3.3 RNA [i](#)

There are no RNA molecules in this entry.

5.4 Non-standard residues in protein, DNA, RNA chains [i](#)

There are no non-standard protein/DNA/RNA residues in this entry.

5.5 Carbohydrates [i](#)

There are no carbohydrates in this entry.

5.6 Ligand geometry [i](#)

Of 6 ligands modelled in this entry, 4 are monoatomic - leaving 2 for Mogul analysis.

In the following table, the Counts columns list the number of bonds (or angles) for which Mogul statistics could be retrieved, the number of bonds (or angles) that are observed in the model and the number of bonds (or angles) that are defined in the Chemical Component Dictionary. The Link column lists molecule types, if any, to which the group is linked. The Z score for a bond length (or angle) is the number of standard deviations the observed value is removed from the expected value. A bond length (or angle) with $|Z| > 2$ is considered an outlier worth inspection. RMSZ is the root-mean-square of all Z scores of the bond lengths (or angles).

Mol	Type	Chain	Res	Link	Bond lengths			Bond angles		
					Counts	RMSZ	# Z > 2	Counts	RMSZ	# Z > 2
4	PD2	A	1356	2	7,12,12	0.94	1 (14%)	8,16,16	2.35	4 (50%)
4	PD2	B	1356	2	7,12,12	1.31	1 (14%)	8,16,16	2.34	3 (37%)

In the following table, the Chirals column lists the number of chiral outliers, the number of chiral centers analysed, the number of these observed in the model and the number defined in the Chemical Component Dictionary. Similar counts are reported in the Torsion and Rings columns. '-' means no outliers of that kind were identified.

Mol	Type	Chain	Res	Link	Chirals	Torsions	Rings
4	PD2	A	1356	2	-	0/0/8/8	0/1/1/1
4	PD2	B	1356	2	-	0/0/8/8	0/1/1/1

All (2) bond length outliers are listed below:

Mol	Chain	Res	Type	Atoms	Z	Observed(Å)	Ideal(Å)
4	B	1356	PD2	C4-C41	2.69	1.50	1.47
4	A	1356	PD2	C4-C41	2.18	1.49	1.47

All (7) bond angle outliers are listed below:

Mol	Chain	Res	Type	Atoms	Z	Observed(°)	Ideal(°)
4	B	1356	PD2	C6-N1-C2	4.03	122.89	117.23
4	A	1356	PD2	C4-C3-C2	-3.83	116.25	119.87
4	B	1356	PD2	C5-C6-N1	-3.60	119.49	123.96
4	A	1356	PD2	C5-C6-N1	-3.23	119.95	123.96
4	A	1356	PD2	C6-N1-C2	2.95	121.37	117.23
4	B	1356	PD2	C4-C3-C2	-2.49	117.52	119.87
4	A	1356	PD2	C5-C4-C41	-2.35	117.22	120.37

There are no chirality outliers.

There are no torsion outliers.

There are no ring outliers.

No monomer is involved in short contacts.

5.7 Other polymers

There are no such residues in this entry.

5.8 Polymer linkage issues

There are no chain breaks in this entry.

6 Fit of model and data [i](#)

6.1 Protein, DNA and RNA chains [i](#)

In the following table, the column labelled ‘#RSRZ> 2’ contains the number (and percentage) of RSRZ outliers, followed by percent RSRZ outliers for the chain as percentile scores relative to all X-ray entries and entries of similar resolution. The OWAB column contains the minimum, median, 95th percentile and maximum values of the occupancy-weighted average B-factor per residue. The column labelled ‘Q< 0.9’ lists the number of (and percentage) of residues with an average occupancy less than 0.9.

Mol	Chain	Analysed	<RSRZ>	#RSRZ>2	OWAB(Å ²)	Q<0.9
1	A	350/381 (91%)	0.42	38 (10%) 5 5	34, 42, 54, 68	0
1	B	349/381 (91%)	0.37	30 (8%) 10 11	35, 43, 56, 68	0
All	All	699/762 (91%)	0.39	68 (9%) 7 8	34, 42, 55, 68	0

All (68) RSRZ outliers are listed below:

Mol	Chain	Res	Type	RSRZ
1	A	7	THR	5.8
1	A	144	HIS	5.7
1	B	355	LYS	5.5
1	B	311	ASP	5.1
1	A	57	ALA	4.6
1	A	334	ALA	4.2
1	B	198[A]	ASN	4.2
1	A	351	ALA	4.1
1	A	354	LEU	4.0
1	A	198[A]	ASN	3.8
1	B	111	TYR	3.7
1	A	8	LEU	3.6
1	B	334	ALA	3.6
1	A	197	ILE	3.3
1	A	177	TYR	3.3
1	B	44	LEU	3.3
1	A	355	LYS	3.3
1	B	338	ASN	3.3
1	A	196	SER	3.2
1	A	194	LEU	3.2
1	A	350	ALA	3.2
1	A	331	LEU	3.2
1	B	112	SER	3.2
1	B	270	THR	3.1

Continued on next page...

Continued from previous page...

Mol	Chain	Res	Type	RSRZ
1	A	270	THR	3.1
1	A	311	ASP	3.1
1	A	269	ILE	3.1
1	B	197	ILE	3.1
1	B	8	LEU	3.0
1	B	269	ILE	3.0
1	B	310	LYS	3.0
1	A	64	ASP	3.0
1	A	335	GLY	3.0
1	B	208	TRP	2.9
1	B	274	GLY	2.9
1	B	7	THR	2.8
1	A	6	GLU	2.7
1	A	142	GLU	2.7
1	B	21	MET	2.7
1	B	312	MET	2.6
1	A	338	ASN	2.6
1	B	335	GLY	2.6
1	B	196	SER	2.6
1	A	291	PHE	2.5
1	A	186	ALA	2.5
1	B	277	ALA	2.5
1	B	45	ALA	2.4
1	A	112	SER	2.4
1	B	271	PHE	2.4
1	A	195	TYR	2.4
1	B	268	MET	2.4
1	A	290	ASN	2.3
1	B	354	LEU	2.3
1	B	272	PRO	2.3
1	A	20	THR	2.2
1	B	194	LEU	2.2
1	A	44	LEU	2.2
1	A	310	LYS	2.2
1	B	276	HIS	2.2
1	A	25	ARG	2.2
1	A	114	PHE	2.1
1	A	185	PHE	2.1
1	A	289	THR	2.1
1	B	163	GLU	2.1
1	A	52	GLU	2.1
1	A	111	TYR	2.0

Continued on next page...

Continued from previous page...

Mol	Chain	Res	Type	RSRZ
1	A	288	SER	2.0
1	B	186	ALA	2.0

6.2 Non-standard residues in protein, DNA, RNA chains [i](#)

There are no non-standard protein/DNA/RNA residues in this entry.

6.3 Carbohydrates [i](#)

There are no carbohydrates in this entry.

6.4 Ligands [i](#)

In the following table, the Atoms column lists the number of modelled atoms in the group and the number defined in the chemical component dictionary. The B-factors column lists the minimum, median, 95th percentile and maximum values of B factors of atoms in the group. The column labelled 'Q< 0.9' lists the number of atoms with occupancy less than 0.9.

Mol	Type	Chain	Res	Atoms	RSCC	RSR	B-factors(\AA^2)	Q<0.9
4	PD2	B	1356	12/12	0.94	0.10	31,34,35,35	0
4	PD2	A	1356	12/12	0.95	0.14	29,30,32,32	0
3	ZN	B	502	1/1	0.98	0.07	39,39,39,39	0
3	ZN	A	502	1/1	0.99	0.07	39,39,39,39	0
2	NI	B	501	1/1	1.00	0.02	27,27,27,27	0
2	NI	A	501	1/1	1.00	0.04	26,26,26,26	0

6.5 Other polymers [i](#)

There are no such residues in this entry.