



Full wwPDB X-ray Structure Validation Report ⓘ

Feb 17, 2024 – 10:47 PM EST

PDB ID : 3VBD
Title : Complex of human carbonic anhydrase II with 4-(6-methoxy-3,4-dihydroisoquinolin-1-yl)benzenesulfonamide
Authors : Mader, P.; Brynda, J.; Rezacova, P.
Deposited on : 2012-01-02
Resolution : 1.05 Å(reported)

This is a Full wwPDB X-ray Structure Validation Report for a publicly released PDB entry.

We welcome your comments at validation@mail.wwpdb.org

A user guide is available at

<https://www.wwpdb.org/validation/2017/XrayValidationReportHelp>

with specific help available everywhere you see the ⓘ symbol.

The types of validation reports are described at

<http://www.wwpdb.org/validation/2017/FAQs#types>.

The following versions of software and data (see [references ⓘ](#)) were used in the production of this report:

MolProbity : 4.02b-467
Mogul : 1.8.5 (274361), CSD as541be (2020)
Xtriage (Phenix) : 1.13
EDS : 2.36
buster-report : 1.1.7 (2018)
Percentile statistics : 20191225.v01 (using entries in the PDB archive December 25th 2019)
Refmac : 5.8.0158
CCP4 : 7.0.044 (Gargrove)
Ideal geometry (proteins) : Engh & Huber (2001)
Ideal geometry (DNA, RNA) : Parkinson et al. (1996)
Validation Pipeline (wwPDB-VP) : 2.36

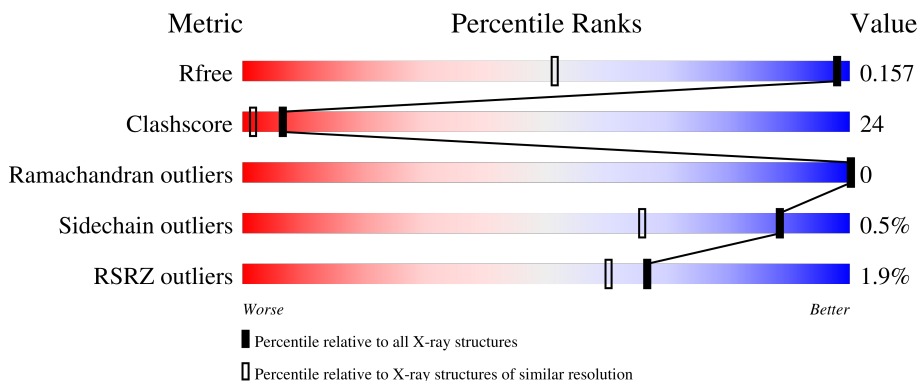
1 Overall quality at a glance

The following experimental techniques were used to determine the structure:

X-RAY DIFFRACTION

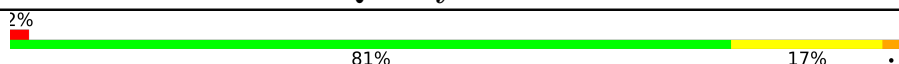
The reported resolution of this entry is 1.05 Å.

Percentile scores (ranging between 0-100) for global validation metrics of the entry are shown in the following graphic. The table shows the number of entries on which the scores are based.



Metric	Whole archive (#Entries)	Similar resolution (#Entries, resolution range(Å))
R_{free}	130704	1202 (1.10-1.02)
Clashscore	141614	1252 (1.10-1.02)
Ramachandran outliers	138981	1204 (1.10-1.02)
Sidechain outliers	138945	1202 (1.10-1.02)
RSRZ outliers	127900	1178 (1.10-1.02)

The table below summarises the geometric issues observed across the polymeric chains and their fit to the electron density. The red, orange, yellow and green segments of the lower bar indicate the fraction of residues that contain outliers for ≥ 3 , 2, 1 and 0 types of geometric quality criteria respectively. A grey segment represents the fraction of residues that are not modelled. The numeric value for each fraction is indicated below the corresponding segment, with a dot representing fractions $\leq 5\%$. The upper red bar (where present) indicates the fraction of residues that have poor fit to the electron density. The numeric value is given above the bar.

Mol	Chain	Length	Quality of chain
1	A	259	

The following table lists non-polymeric compounds, carbohydrate monomers and non-standard residues in protein, DNA, RNA chains that are outliers for geometric or electron-density-fit criteria:

Mol	Type	Chain	Res	Chirality	Geometry	Clashes	Electron density
4	MBO	A	2003[A]	-	-	X	-

Continued on next page...

Continued from previous page...

Mol	Type	Chain	Res	Chirality	Geometry	Clashes	Electron density
4	MBO	A	2003[B]	-	-	X	-
4	MBO	A	2004	-	-	X	-
5	GOL	A	2006	-	-	X	-

2 Entry composition [i](#)

There are 6 unique types of molecules in this entry. The entry contains 2844 atoms, of which 0 are hydrogens and 0 are deuteriums.

In the tables below, the ZeroOcc column contains the number of atoms modelled with zero occupancy, the AltConf column contains the number of residues with at least one atom in alternate conformation and the Trace column contains the number of residues modelled with at most 2 atoms.

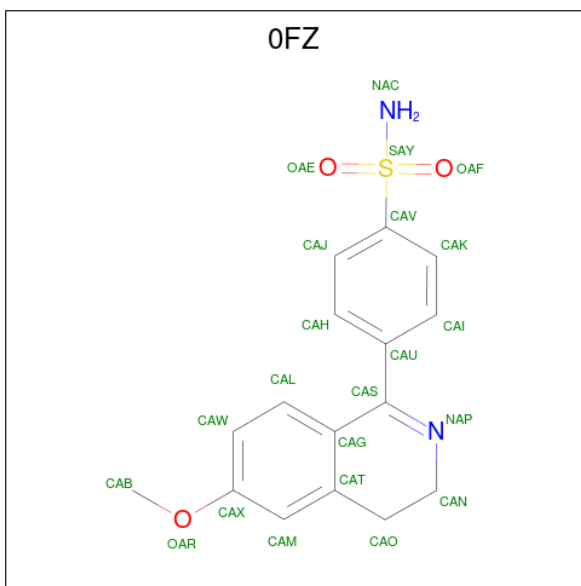
- Molecule 1 is a protein called Carbonic anhydrase 2.

Mol	Chain	Residues	Atoms					ZeroOcc	AltConf	Trace
			Total	C	N	O	S			
1	A	258	2337	1496	399	439	3	0	58	0

- Molecule 2 is ZINC ION (three-letter code: ZN) (formula: Zn).

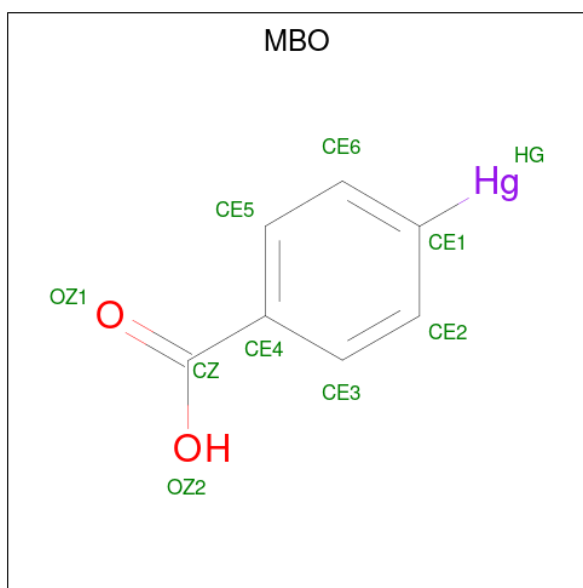
Mol	Chain	Residues	Atoms		ZeroOcc	AltConf
			Total	Zn		
2	A	1	1	1	0	0

- Molecule 3 is 4-(6-methoxy-3,4-dihydroisoquinolin-1-yl)benzenesulfonamide (three-letter code: 0FZ) (formula: C₁₆H₁₆N₂O₃S).



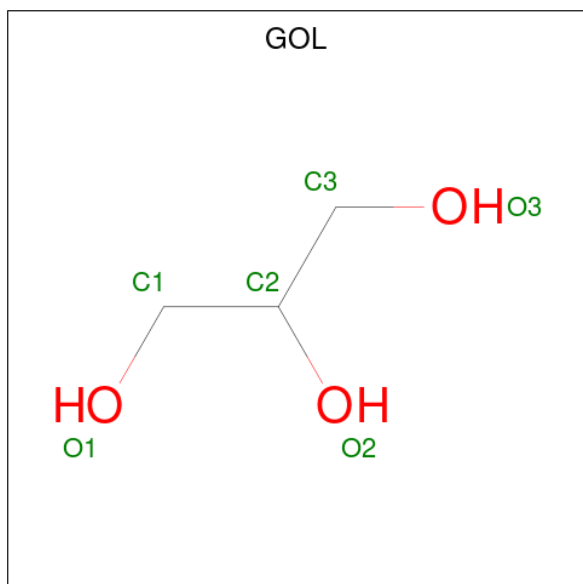
Mol	Chain	Residues	Atoms					ZeroOcc	AltConf
			Total	C	N	O	S		
3	A	1	34	26	3	4	1	0	1

- Molecule 4 is MERCURIBENZOIC ACID (three-letter code: MBO) (formula: $C_7H_5HgO_2$).



Mol	Chain	Residues	Atoms			ZeroOcc	AltConf	
4	A	1	Total	C	Hg	O	0	1
			20	14	2	4		
4	A	1	Total	C	Hg	O	0	0
			10	7	1	2		

- Molecule 5 is GLYCEROL (three-letter code: GOL) (formula: $C_3H_8O_3$).



Mol	Chain	Residues	Atoms			ZeroOcc	AltConf
5	A	1	Total	C	O		
			6	3	3	0	0

Continued on next page...

Continued from previous page...

Mol	Chain	Residues	Atoms			ZeroOcc	AltConf
5	A	1	Total	C	O	0	0
			6	3	3		

- Molecule 6 is water.

Mol	Chain	Residues	Atoms		ZeroOcc	AltConf
6	A	430	Total	O	0	0
			430	430		

3 Residue-property plots [i](#)

These plots are drawn for all protein, RNA, DNA and oligosaccharide chains in the entry. The first graphic for a chain summarises the proportions of the various outlier classes displayed in the second graphic. The second graphic shows the sequence view annotated by issues in geometry and electron density. Residues are color-coded according to the number of geometric quality criteria for which they contain at least one outlier: green = 0, yellow = 1, orange = 2 and red = 3 or more. A red dot above a residue indicates a poor fit to the electron density ($RSRZ > 2$). Stretches of 2 or more consecutive residues without any outlier are shown as a green connector. Residues present in the sample, but not in the model, are shown in grey.

- Molecule 1: Carbonic anhydrase 2



4 Data and refinement statistics

Property	Value	Source
Space group	P 1 21 1	Depositor
Cell constants a, b, c, α , β , γ	42.01Å 41.18Å 71.76Å 90.00° 104.33° 90.00°	Depositor
Resolution (Å)	10.00 – 1.05 16.71 – 1.05	Depositor EDS
% Data completeness (in resolution range)	(Not available) (10.00-1.05) 99.1 (16.71-1.05)	Depositor EDS
R_{merge}	0.05	Depositor
R_{sym}	0.05	Depositor
$\langle I/\sigma(I) \rangle$ ¹	1.91 (at 1.05Å)	Xtrriage
Refinement program	SHELXL-97	Depositor
R, R_{free}	0.127 , 0.160 0.126 , 0.157	Depositor DCC
R_{free} test set	5561 reflections (5.06%)	wwPDB-VP
Wilson B-factor (Å ²)	8.7	Xtrriage
Anisotropy	0.141	Xtrriage
Bulk solvent k_{sol} (e/Å ³), B_{sol} (Å ²)	0.36 , 65.0	EDS
L-test for twinning ²	$\langle L \rangle = 0.49$, $\langle L^2 \rangle = 0.32$	Xtrriage
Estimated twinning fraction	0.023 for h,-k,-h-l	Xtrriage
F_o, F_c correlation	0.98	EDS
Total number of atoms	2844	wwPDB-VP
Average B, all atoms (Å ²)	15.0	wwPDB-VP

Xtrriage's analysis on translational NCS is as follows: *The largest off-origin peak in the Patterson function is 8.42% of the height of the origin peak. No significant pseudotranslation is detected.*

¹Intensities estimated from amplitudes.

²Theoretical values of $\langle |L| \rangle$, $\langle L^2 \rangle$ for acentric reflections are 0.5, 0.333 respectively for untwinned datasets, and 0.375, 0.2 for perfectly twinned datasets.

5 Model quality i

5.1 Standard geometry i

Bond lengths and bond angles in the following residue types are not validated in this section: GOL, MBO, ZN, 0FZ

The Z score for a bond length (or angle) is the number of standard deviations the observed value is removed from the expected value. A bond length (or angle) with $|Z| > 5$ is considered an outlier worth inspection. RMSZ is the root-mean-square of all Z scores of the bond lengths (or angles).

Mol	Chain	Bond lengths		Bond angles	
		RMSZ	# Z >5	RMSZ	# Z >5
1	A	0.75	1/2589 (0.0%)	1.29	24/3507 (0.7%)

Chiral center outliers are detected by calculating the chiral volume of a chiral center and verifying if the center is modelled as a planar moiety or with the opposite hand. A planarity outlier is detected by checking planarity of atoms in a peptide group, atoms in a mainchain group or atoms of a sidechain that are expected to be planar.

Mol	Chain	#Chirality outliers	#Planarity outliers
1	A	0	1

All (1) bond length outliers are listed below:

Mol	Chain	Res	Type	Atoms	Z	Observed(Å)	Ideal(Å)
1	A	1261	LYS	C-OXT	7.85	1.38	1.23

All (24) bond angle outliers are listed below:

Mol	Chain	Res	Type	Atoms	Z	Observed(°)	Ideal(°)
1	A	1182	ARG	NE-CZ-NH2	-8.79	115.90	120.30
1	A	1051	TYR	CB-CG-CD1	7.41	125.44	121.00
1	A	1059[A]	ILE	C-N-CA	7.24	139.80	121.70
1	A	1059[B]	ILE	C-N-CA	7.24	139.80	121.70
1	A	1027	ARG	NE-CZ-NH1	6.91	123.76	120.30
1	A	1226	PHE	CB-CG-CD2	-6.69	116.12	120.80
1	A	1226	PHE	CB-CG-CD1	6.42	125.30	120.80
1	A	1051	TYR	CB-CG-CD2	-6.32	117.21	121.00
1	A	1069[A]	GLU	CA-C-N	-6.17	103.62	117.20
1	A	1069[B]	GLU	CA-C-N	-6.17	103.62	117.20
1	A	1088	TYR	CB-CG-CD2	-6.06	117.36	121.00
1	A	1167	ILE	O-C-N	5.82	132.02	122.70

Continued on next page...

Continued from previous page...

Mol	Chain	Res	Type	Atoms	Z	Observed(°)	Ideal(°)
1	A	1133[A]	LYS	CA-CB-CG	-5.76	100.72	113.40
1	A	1133[B]	LYS	CA-CB-CG	-5.76	100.72	113.40
1	A	1064[A]	HIS	CA-CB-CG	5.69	123.27	113.60
1	A	1064[B]	HIS	CA-CB-CG	5.69	123.27	113.60
1	A	1182	ARG	NH1-CZ-NH2	5.60	125.56	119.40
1	A	1019	ASP	CB-CG-OD1	5.46	123.22	118.30
1	A	1238[A]	GLU	N-CA-CB	-5.41	100.86	110.60
1	A	1238[B]	GLU	N-CA-CB	-5.41	100.86	110.60
1	A	1069[A]	GLU	O-C-N	5.37	131.29	122.70
1	A	1069[B]	GLU	O-C-N	5.37	131.29	122.70
1	A	1221	GLU	OE1-CD-OE2	-5.30	116.94	123.30
1	A	1052	ASP	CB-CG-OD1	5.08	122.88	118.30

There are no chirality outliers.

All (1) planarity outliers are listed below:

Mol	Chain	Res	Type	Group
1	A	1057[A]	LEU	Peptide

5.2 Too-close contacts

In the following table, the Non-H and H(model) columns list the number of non-hydrogen atoms and hydrogen atoms in the chain respectively. The H(added) column lists the number of hydrogen atoms added and optimized by MolProbity. The Clashes column lists the number of clashes within the asymmetric unit, whereas Symm-Clashes lists symmetry-related clashes.

Mol	Chain	Non-H	H(model)	H(added)	Clashes	Symm-Clashes
1	A	2337	0	2213	80	0
2	A	1	0	0	0	0
3	A	34	0	20	4	0
4	A	30	0	12	44	0
5	A	12	0	16	7	0
6	A	430	0	0	41	0
All	All	2844	0	2261	113	0

The all-atom clashscore is defined as the number of clashes found per 1000 atoms (including hydrogen atoms). The all-atom clashscore for this structure is 24.

All (113) close contacts within the same asymmetric unit are listed below, sorted by their clash magnitude.

Atom-1	Atom-2	Interatomic distance (Å)	Clash overlap (Å)
4:A:2003[B]:MBO:HE6	4:A:2003[B]:MBO:CE5	1.97	1.31
4:A:2003[B]:MBO:HE6	4:A:2003[B]:MBO:CE1	1.99	1.31
4:A:2003[A]:MBO:HE2	4:A:2003[A]:MBO:CE1	2.04	1.26
4:A:2004:MBO:HE3	4:A:2004:MBO:CE4	2.04	1.26
4:A:2004:MBO:HE5	4:A:2004:MBO:CE6	2.06	1.24
4:A:2003[A]:MBO:HE2	4:A:2003[A]:MBO:CE3	2.05	1.24
4:A:2004:MBO:CE4	4:A:2004:MBO:HE5	2.06	1.23
4:A:2003[B]:MBO:HE2	4:A:2003[B]:MBO:CE3	2.06	1.23
4:A:2004:MBO:HE3	4:A:2004:MBO:CE2	2.05	1.23
4:A:2003[B]:MBO:CE1	4:A:2003[B]:MBO:HE2	2.07	1.21
1:A:1133[A]:LYS:HD2	6:A:6349:HOH:O	1.02	1.18
1:A:1239[B]:GLU:OE1	6:A:6385:HOH:O	1.63	1.16
4:A:2004:MBO:HE3	6:A:6168:HOH:O	1.90	1.10
4:A:2004:MBO:HE5	4:A:2004:MBO:CE5	0.97	1.07
4:A:2003[A]:MBO:HE2	4:A:2003[A]:MBO:CE2	0.97	1.06
4:A:2003[B]:MBO:HE6	4:A:2003[B]:MBO:CE6	0.97	1.06
4:A:2003[B]:MBO:HE2	4:A:2003[B]:MBO:CE2	0.97	1.06
4:A:2004:MBO:HE3	4:A:2004:MBO:CE3	0.97	1.06
1:A:1062:ASN:HD21	5:A:2006:GOL:H12	1.25	1.00
1:A:1064[A]:HIS:NE2	6:A:6157:HOH:O	1.97	0.97
1:A:1069[B]:GLU:OE2	6:A:6403:HOH:O	1.83	0.96
1:A:1170[B]:LYS:NZ	4:A:2004:MBO:HE3	2.26	0.89
4:A:2003[B]:MBO:HE6	4:A:2003[B]:MBO:HE5	2.29	0.89
4:A:2003[A]:MBO:HE2	6:A:6401:HOH:O	1.08	0.88
1:A:1010[B]:HIS:NE2	6:A:6416:HOH:O	2.05	0.88
1:A:1092:GLN:HE21	3:A:2002[A]:OFZ:H6	1.40	0.87
4:A:2003[B]:MBO:HE2	4:A:2003[B]:MBO:HE3	2.32	0.86
4:A:2004:MBO:HE5	4:A:2004:MBO:HE6	2.34	0.85
1:A:1170[B]:LYS:HZ3	4:A:2004:MBO:HE3	1.81	0.84
1:A:1036[B]:HIS:ND1	6:A:6070:HOH:O	2.11	0.83
4:A:2003[A]:MBO:HE2	4:A:2003[A]:MBO:HE3	2.33	0.83
1:A:1237[A]:PRO:HG3	6:A:6428:HOH:O	1.78	0.83
1:A:1055[A]:THR:HG22	6:A:6406:HOH:O	1.77	0.82
4:A:2004:MBO:HE5	4:A:2004:MBO:CZ	2.49	0.81
4:A:2004:MBO:HE3	4:A:2004:MBO:HE2	2.36	0.80
1:A:1170[B]:LYS:HE3	4:A:2004:MBO:OZ1	1.85	0.76
4:A:2004:MBO:CE3	6:A:6168:HOH:O	2.34	0.74
4:A:2003[B]:MBO:HE6	6:A:6194:HOH:O	2.26	0.73
1:A:1062:ASN:ND2	5:A:2006:GOL:H12	2.02	0.73
1:A:1133[B]:LYS:HG2	6:A:6165:HOH:O	1.86	0.73
1:A:1174[A]:ALA:HB1	6:A:6219:HOH:O	1.89	0.72
1:A:1205:GLU:O	4:A:2003[A]:MBO:HE2	2.28	0.72

Continued on next page...

Continued from previous page...

Atom-1	Atom-2	Interatomic distance (Å)	Clash overlap (Å)
5:A:2005:GOL:H32	6:A:6421:HOH:O	1.91	0.70
1:A:1170[B]:LYS:HD2	4:A:2004:MBO:CE4	2.21	0.70
1:A:1136:GLN:HA	4:A:2003[B]:MBO:HE6	2.13	0.69
1:A:1057[A]:LEU:HB2	6:A:6353:HOH:O	1.92	0.67
1:A:1230:ASN:HB3	1:A:1232[A]:ASN:OD1	1.95	0.67
1:A:1057[A]:LEU:HD12	6:A:6402:HOH:O	1.95	0.67
1:A:1170[B]:LYS:HZ2	4:A:2004:MBO:CZ	2.08	0.66
1:A:1234[B]:GLU:OE2	6:A:6368:HOH:O	2.14	0.66
1:A:1069[B]:GLU:HB3	6:A:6208:HOH:O	1.95	0.65
1:A:1069[B]:GLU:HG2	6:A:6403:HOH:O	1.97	0.65
1:A:1247[B]:PRO:HG3	6:A:6315:HOH:O	1.96	0.65
1:A:1092:GLN:NE2	3:A:2002[A]:OFZ:H6	2.12	0.64
1:A:1170[B]:LYS:HZ2	4:A:2004:MBO:HE3	2.02	0.62
1:A:1057[A]:LEU:CB	6:A:6353:HOH:O	2.46	0.62
1:A:1232[B]:ASN:HB3	6:A:6398:HOH:O	2.01	0.61
1:A:1232[B]:ASN:HB3	1:A:1239[B]:GLU:OE2	2.01	0.60
4:A:2003[B]:MBO:HE2	6:A:6401:HOH:O	2.40	0.60
1:A:1198[B]:LEU:CD1	3:A:2002[B]:OFZ:H6	2.33	0.59
1:A:1010[B]:HIS:CD2	6:A:6416:HOH:O	2.55	0.57
4:A:2004:MBO:HE3	4:A:2004:MBO:CZ	2.70	0.57
1:A:1087[A]:THR:HG21	6:A:6088:HOH:O	2.06	0.55
1:A:1133[B]:LYS:HD2	1:A:1136:GLN:OE1	2.07	0.55
1:A:1172[B]:LYS:HB3	1:A:1172[B]:LYS:NZ	2.22	0.55
1:A:1232[B]:ASN:OD1	1:A:1239[B]:GLU:HG3	2.09	0.53
1:A:1170[B]:LYS:HE3	4:A:2004:MBO:CZ	2.38	0.53
1:A:1170[B]:LYS:CE	4:A:2004:MBO:CZ	2.86	0.53
1:A:1177[A]:THR:O	1:A:1178[A]:ASN:HB2	2.10	0.52
1:A:1215:PRO:HG3	5:A:2005:GOL:H2	1.90	0.52
1:A:1064[A]:HIS:HE2	5:A:2006:GOL:H31	1.75	0.51
1:A:1232[B]:ASN:HB3	1:A:1239[B]:GLU:HG3	1.91	0.51
1:A:1175[B]:ASP:OD2	6:A:6352:HOH:O	2.19	0.51
1:A:1055[A]:THR:CG2	6:A:6406:HOH:O	2.45	0.50
1:A:1170[B]:LYS:HD2	4:A:2004:MBO:CE3	2.43	0.49
1:A:1010[B]:HIS:HB2	6:A:6209:HOH:O	2.12	0.49
1:A:1055[B]:THR:HG23	1:A:1071:ASP:HB3	1.96	0.48
1:A:1057[B]:LEU:CD2	1:A:1071:ASP:HB2	2.44	0.48
1:A:1092:GLN:HE21	3:A:2002[A]:OFZ:CAL	2.19	0.48
1:A:1112[B]:LYS:HE3	1:A:1114:TYR:CE2	2.49	0.48
1:A:1021[B]:PRO:HG2	6:A:6354:HOH:O	2.15	0.47
1:A:1170[B]:LYS:CD	4:A:2004:MBO:CE3	2.93	0.47
1:A:1170[B]:LYS:NZ	4:A:2004:MBO:CZ	2.76	0.46

Continued on next page...

Continued from previous page...

Atom-1	Atom-2	Interatomic distance (Å)	Clash overlap (Å)
1:A:1232[B]:ASN:CB	6:A:6398:HOH:O	2.61	0.46
1:A:1136:GLN:O	4:A:2003[A]:MBO:HE6	2.53	0.46
1:A:1069[B]:GLU:CG	6:A:6403:HOH:O	2.57	0.46
1:A:1168[B]:LYS:O	1:A:1230:ASN:HB2	2.16	0.44
1:A:1170[B]:LYS:CD	4:A:2004:MBO:CE4	2.95	0.44
1:A:1170[A]:LYS:NZ	6:A:6335:HOH:O	2.49	0.44
1:A:1234[B]:GLU:HG3	6:A:6243:HOH:O	2.18	0.44
1:A:1027:ARG:HD3	6:A:6333:HOH:O	2.18	0.43
1:A:1017:HIS:CG	1:A:1024:LYS:HE2	2.54	0.43
1:A:1057[B]:LEU:HD21	1:A:1071:ASP:HB2	2.01	0.43
1:A:1172[B]:LYS:HB3	1:A:1172[B]:LYS:HZ3	1.83	0.43
1:A:1172[A]:LYS:HA	6:A:6169:HOH:O	2.19	0.42
1:A:1257:LYS:NZ	6:A:6359:HOH:O	2.49	0.42
1:A:1170[B]:LYS:NZ	4:A:2004:MBO:CE3	2.83	0.42
1:A:1170[A]:LYS:HZ2	4:A:2004:MBO:HE3	2.21	0.41
1:A:1065:ALA:HB3	5:A:2006:GOL:O1	2.19	0.41

There are no symmetry-related clashes.

5.3 Torsion angles [i](#)

5.3.1 Protein backbone [i](#)

In the following table, the Percentiles column shows the percent Ramachandran outliers of the chain as a percentile score with respect to all X-ray entries followed by that with respect to entries of similar resolution.

The Analysed column shows the number of residues for which the backbone conformation was analysed, and the total number of residues.

Mol	Chain	Analysed	Favoured	Allowed	Outliers	Percentiles
1	A	314/259 (121%)	297 (95%)	17 (5%)	0	100 100

There are no Ramachandran outliers to report.

5.3.2 Protein sidechains [i](#)

In the following table, the Percentiles column shows the percent sidechain outliers of the chain as a percentile score with respect to all X-ray entries followed by that with respect to entries of similar resolution.

The Analysed column shows the number of residues for which the sidechain conformation was analysed, and the total number of residues.

Mol	Chain	Analysed	Rotameric	Outliers	Percentiles	
1	A	274/224 (122%)	272 (99%)	2 (1%)	84	57

All (2) residues with a non-rotameric sidechain are listed below:

Mol	Chain	Res	Type
1	A	1133[A]	LYS
1	A	1133[B]	LYS

Sometimes sidechains can be flipped to improve hydrogen bonding and reduce clashes. There are no such sidechains identified.

5.3.3 RNA [i](#)

There are no RNA molecules in this entry.

5.4 Non-standard residues in protein, DNA, RNA chains [i](#)

There are no non-standard protein/DNA/RNA residues in this entry.

5.5 Carbohydrates [i](#)

There are no monosaccharides in this entry.

5.6 Ligand geometry [i](#)

Of 8 ligands modelled in this entry, 1 is monoatomic - leaving 7 for Mogul analysis.

In the following table, the Counts columns list the number of bonds (or angles) for which Mogul statistics could be retrieved, the number of bonds (or angles) that are observed in the model and the number of bonds (or angles) that are defined in the Chemical Component Dictionary. The Link column lists molecule types, if any, to which the group is linked. The Z score for a bond length (or angle) is the number of standard deviations the observed value is removed from the expected value. A bond length (or angle) with $|Z| > 2$ is considered an outlier worth inspection. RMSZ is the root-mean-square of all Z scores of the bond lengths (or angles).

Mol	Type	Chain	Res	Link	Bond lengths			Bond angles		
					Counts	RMSZ	$\# Z > 2$	Counts	RMSZ	$\# Z > 2$
3	0FZ	A	2002[B]	-	23,24,24	2.83	7 (30%)	35,35,35	2.59	19 (54%)

Mol	Type	Chain	Res	Link	Bond lengths			Bond angles		
					Counts	RMSZ	# Z > 2	Counts	RMSZ	# Z > 2
5	GOL	A	2005	-	5,5,5	0.62	0	5,5,5	1.76	1 (20%)
5	GOL	A	2006	-	5,5,5	0.58	0	5,5,5	1.42	1 (20%)
4	MBO	A	2003[B]	-	7,10,10	1.70	1 (14%)	11,13,13	3.19	5 (45%)
3	0FZ	A	2002[A]	-	23,24,24	2.80	7 (30%)	35,35,35	3.01	21 (60%)
4	MBO	A	2004	-	7,10,10	1.82	1 (14%)	11,13,13	1.82	3 (27%)
4	MBO	A	2003[A]	1	7,10,10	1.81	1 (14%)	11,13,13	2.14	3 (27%)

In the following table, the Chirals column lists the number of chiral outliers, the number of chiral centers analysed, the number of these observed in the model and the number defined in the Chemical Component Dictionary. Similar counts are reported in the Torsion and Rings columns. '-' means no outliers of that kind were identified.

Mol	Type	Chain	Res	Link	Chirals	Torsions	Rings
3	0FZ	A	2002[B]	-	-	7/12/22/22	0/3/3/3
5	GOL	A	2005	-	-	2/4/4/4	-
5	GOL	A	2006	-	-	2/4/4/4	-
4	MBO	A	2003[B]	-	-	4/4/4/4	0/1/1/1
3	0FZ	A	2002[A]	-	-	3/12/22/22	0/3/3/3
4	MBO	A	2004	-	-	4/4/4/4	0/1/1/1
4	MBO	A	2003[A]	1	-	0/4/4/4	0/1/1/1

All (17) bond length outliers are listed below:

Mol	Chain	Res	Type	Atoms	Z	Observed(Å)	Ideal(Å)
3	A	2002[B]	0FZ	CAU-CAS	-7.26	1.38	1.49
3	A	2002[A]	0FZ	CAU-CAS	-6.94	1.39	1.49
3	A	2002[A]	0FZ	CAO-CAT	-6.84	1.39	1.51
3	A	2002[B]	0FZ	CAO-CAT	-6.46	1.40	1.51
3	A	2002[A]	0FZ	SAY-NAC	-5.40	1.49	1.60
3	A	2002[B]	0FZ	SAY-NAC	-5.40	1.49	1.60
3	A	2002[A]	0FZ	OAF-SAY	4.83	1.52	1.43
3	A	2002[B]	0FZ	OAF-SAY	4.83	1.52	1.43
4	A	2004	MBO	CE4-CZ	-4.24	1.40	1.49
4	A	2003[A]	MBO	CE4-CZ	-4.11	1.40	1.49
4	A	2003[B]	MBO	CE4-CZ	-3.92	1.41	1.49
3	A	2002[B]	0FZ	CAG-CAS	-3.29	1.39	1.47
3	A	2002[A]	0FZ	CAG-CAS	-3.07	1.40	1.47
3	A	2002[A]	0FZ	CAV-SAY	2.39	1.80	1.77
3	A	2002[B]	0FZ	CAV-SAY	2.39	1.80	1.77

Continued on next page...

Continued from previous page...

Mol	Chain	Res	Type	Atoms	Z	Observed(Å)	Ideal(Å)
3	A	2002[A]	0FZ	OAE-SAY	2.33	1.48	1.43
3	A	2002[B]	0FZ	OAE-SAY	2.33	1.48	1.43

All (53) bond angle outliers are listed below:

Mol	Chain	Res	Type	Atoms	Z	Observed(°)	Ideal(°)
3	A	2002[A]	0FZ	CAG-CAS-CAU	7.24	131.33	120.88
3	A	2002[A]	0FZ	CAL-CAG-CAT	-6.50	112.43	119.43
3	A	2002[B]	0FZ	CAI-CAU-CAS	5.98	128.14	120.64
4	A	2003[B]	MBO	CE5-CE6-CE1	5.56	132.39	121.56
3	A	2002[A]	0FZ	CAW-CAL-CAG	5.37	129.63	120.94
4	A	2003[B]	MBO	CE6-CE5-CE4	-5.28	114.63	120.78
4	A	2003[B]	MBO	CE2-CE3-CE4	5.15	126.77	120.78
3	A	2002[A]	0FZ	CAU-CAS-NAP	-4.84	112.01	117.70
4	A	2003[A]	MBO	OZ2-CZ-OZ1	-4.62	113.10	123.35
3	A	2002[B]	0FZ	CAG-CAS-NAP	-4.47	115.48	123.90
3	A	2002[A]	0FZ	OAF-SAY-NAC	4.42	113.91	107.36
3	A	2002[B]	0FZ	OAF-SAY-NAC	4.42	113.91	107.36
3	A	2002[B]	0FZ	CAG-CAS-CAU	4.12	126.84	120.88
3	A	2002[A]	0FZ	OAF-SAY-CAV	-4.11	102.76	107.35
3	A	2002[B]	0FZ	OAF-SAY-CAV	-4.11	102.76	107.35
4	A	2003[A]	MBO	OZ2-CZ-CE4	4.03	125.31	114.85
3	A	2002[A]	0FZ	OAF-SAY-OAE	-4.03	112.14	118.76
3	A	2002[B]	0FZ	OAF-SAY-OAE	-4.03	112.14	118.76
3	A	2002[A]	0FZ	CAG-CAS-NAP	-3.87	116.62	123.90
3	A	2002[A]	0FZ	CAL-CAW-CAX	-3.46	115.50	119.73
4	A	2004	MBO	CE5-CE4-CZ	-3.26	113.97	120.39
5	A	2005	GOL	C3-C2-C1	-3.20	99.26	111.70
3	A	2002[B]	0FZ	CAL-CAG-CAT	-3.13	116.06	119.43
3	A	2002[A]	0FZ	CAV-SAY-NAC	3.10	112.77	108.38
3	A	2002[B]	0FZ	CAV-SAY-NAC	3.10	112.77	108.38
4	A	2003[B]	MBO	CE3-CE4-CZ	3.10	126.49	120.39
4	A	2004	MBO	CE3-CE4-CZ	3.09	126.47	120.39
3	A	2002[B]	0FZ	CAH-CAU-CAS	-3.03	116.83	120.64
3	A	2002[A]	0FZ	OAE-SAY-CAV	-2.86	104.16	107.35
3	A	2002[B]	0FZ	OAE-SAY-CAV	-2.86	104.16	107.35
3	A	2002[B]	0FZ	CAN-NAP-CAS	2.81	119.65	116.36
3	A	2002[B]	0FZ	CAT-CAG-CAS	2.73	122.78	117.69
3	A	2002[A]	0FZ	CAJ-CAV-CAK	-2.64	116.76	120.44
3	A	2002[B]	0FZ	CAJ-CAV-CAK	-2.64	116.76	120.44
3	A	2002[A]	0FZ	CAH-CAU-CAI	-2.56	114.93	118.59
3	A	2002[B]	0FZ	CAH-CAU-CAI	-2.56	114.93	118.59

Continued on next page...

Continued from previous page...

Mol	Chain	Res	Type	Atoms	Z	Observed(°)	Ideal(°)
3	A	2002[A]	0FZ	CAB-OAR-CAX	-2.47	112.15	117.51
3	A	2002[B]	0FZ	CAW-CAX-CAM	-2.45	117.17	120.53
4	A	2004	MBO	OZ2-CZ-CE4	2.41	121.11	114.85
4	A	2003[A]	MBO	CE5-CE4-CE3	-2.36	115.23	118.59
3	A	2002[A]	0FZ	CAI-CAU-CAS	2.34	123.58	120.64
5	A	2006	GOL	O1-C1-C2	2.32	121.34	110.20
3	A	2002[A]	0FZ	CAK-CAI-CAU	2.32	123.47	120.78
3	A	2002[B]	0FZ	CAK-CAI-CAU	2.32	123.47	120.78
3	A	2002[A]	0FZ	CAO-CAN-NAP	-2.31	106.72	114.62
3	A	2002[A]	0FZ	CAI-CAK-CAV	2.20	121.73	119.45
3	A	2002[B]	0FZ	CAI-CAK-CAV	2.20	121.73	119.45
3	A	2002[A]	0FZ	CAX-CAM-CAT	2.20	123.52	120.47
3	A	2002[B]	0FZ	CAW-CAL-CAG	2.13	124.39	120.94
3	A	2002[A]	0FZ	OAE-SAY-NAC	2.10	110.48	107.36
3	A	2002[B]	0FZ	OAE-SAY-NAC	2.10	110.48	107.36
3	A	2002[A]	0FZ	CAL-CAG-CAS	2.08	127.39	122.32
4	A	2003[B]	MBO	OZ2-CZ-CE4	2.07	120.22	114.85

There are no chirality outliers.

All (22) torsion outliers are listed below:

Mol	Chain	Res	Type	Atoms
4	A	2004	MBO	CE5-CE4-CZ-OZ2
4	A	2004	MBO	CE3-CE4-CZ-OZ1
4	A	2004	MBO	CE3-CE4-CZ-OZ2
4	A	2004	MBO	CE5-CE4-CZ-OZ1
4	A	2003[B]	MBO	CE5-CE4-CZ-OZ2
4	A	2003[B]	MBO	CE5-CE4-CZ-OZ1
4	A	2003[B]	MBO	CE3-CE4-CZ-OZ2
4	A	2003[B]	MBO	CE3-CE4-CZ-OZ1
5	A	2005	GOL	C1-C2-C3-O3
5	A	2005	GOL	O2-C2-C3-O3
3	A	2002[B]	0FZ	CAG-CAS-CAU-CAH
3	A	2002[A]	0FZ	CAK-CAV-SAY-OAE
3	A	2002[B]	0FZ	CAK-CAV-SAY-OAE
3	A	2002[A]	0FZ	CAJ-CAV-SAY-OAE
3	A	2002[B]	0FZ	CAJ-CAV-SAY-OAE
3	A	2002[B]	0FZ	NAP-CAS-CAU-CAH
3	A	2002[B]	0FZ	CAG-CAS-CAU-CAI
5	A	2006	GOL	O1-C1-C2-O2
5	A	2006	GOL	O1-C1-C2-C3
3	A	2002[B]	0FZ	NAP-CAS-CAU-CAI

Continued on next page...

Continued from previous page...

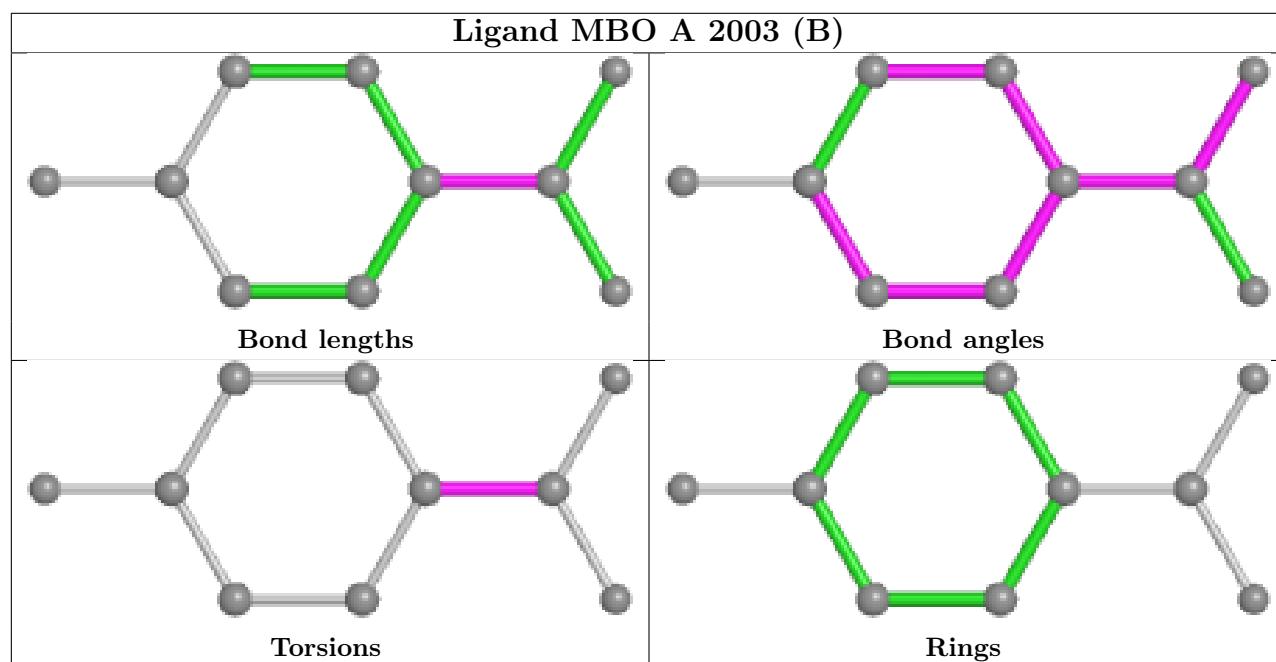
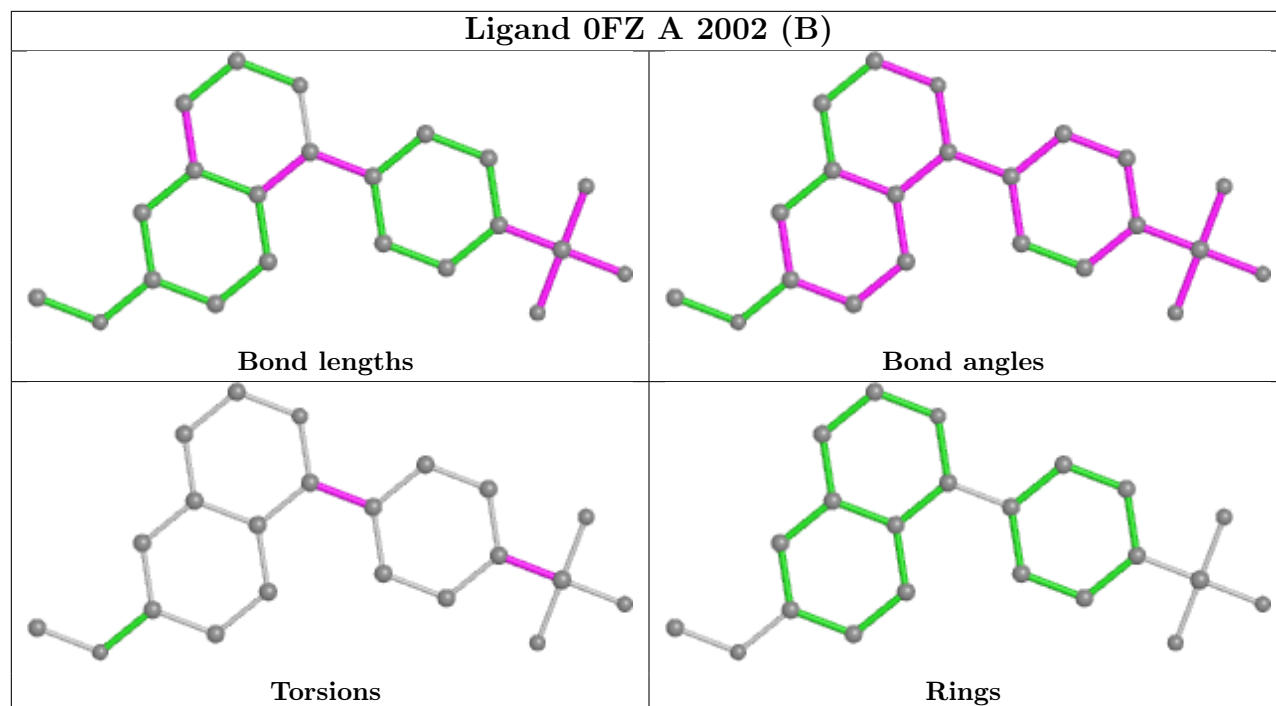
Mol	Chain	Res	Type	Atoms
3	A	2002[A]	0FZ	CAK-CAV-SAY-NAC
3	A	2002[B]	0FZ	CAK-CAV-SAY-NAC

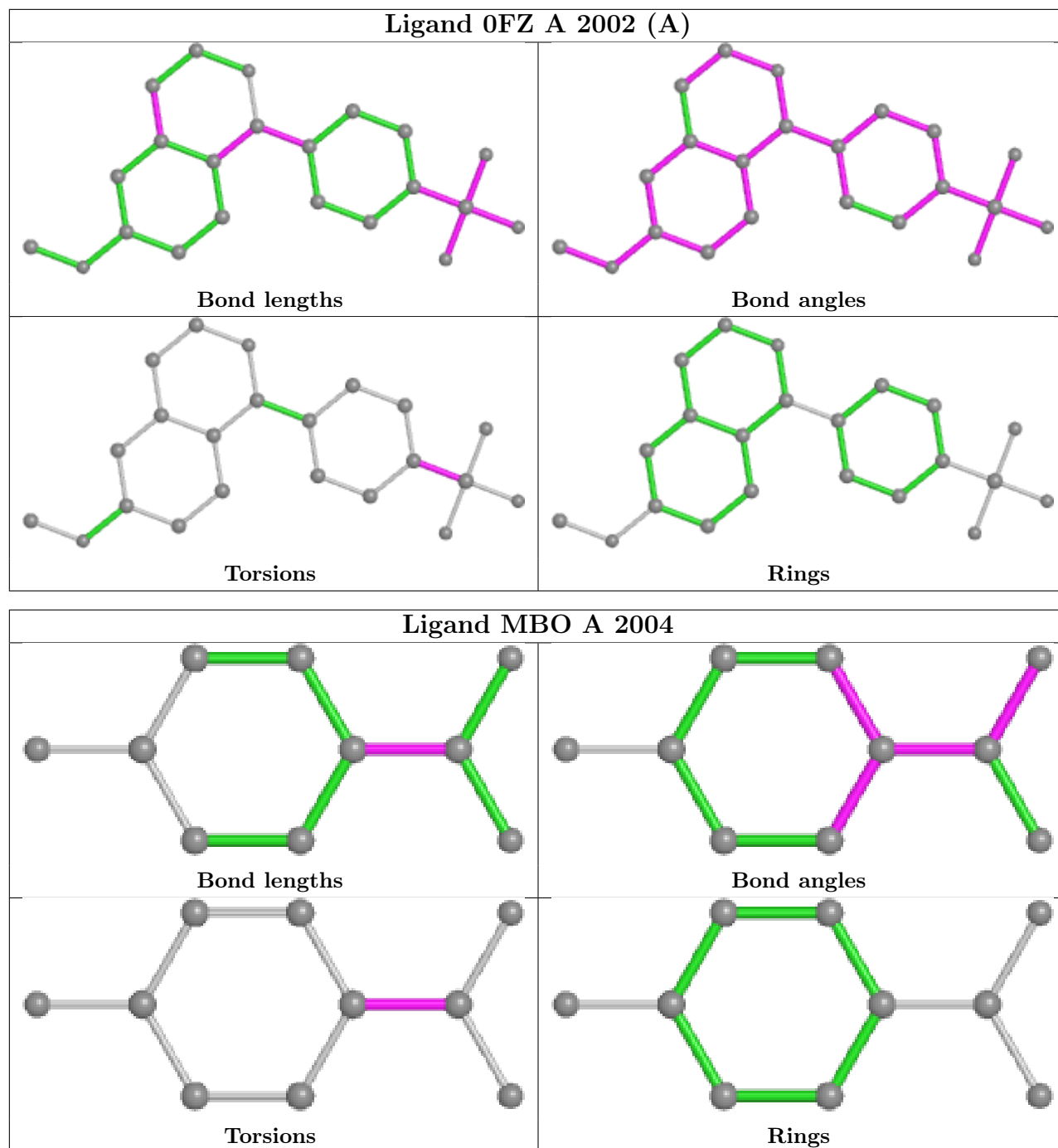
There are no ring outliers.

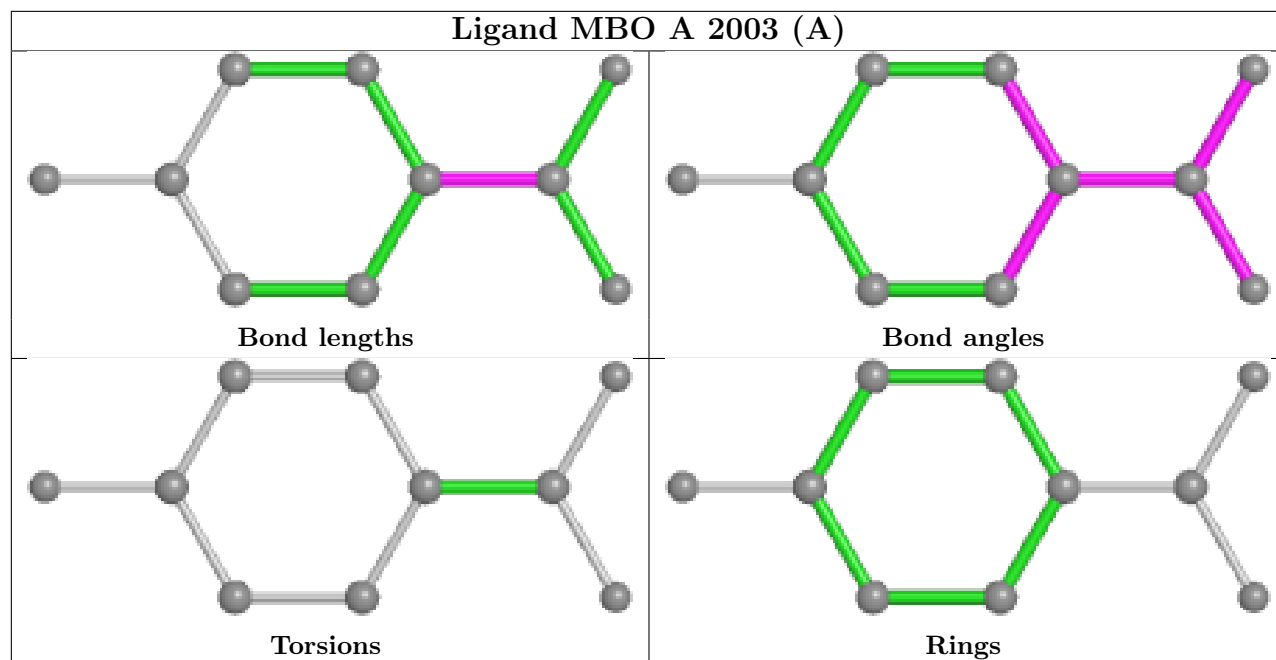
7 monomers are involved in 55 short contacts:

Mol	Chain	Res	Type	Clashes	Symm-Clashes
3	A	2002[B]	0FZ	1	0
5	A	2005	GOL	2	0
5	A	2006	GOL	5	0
4	A	2003[B]	MBO	11	0
3	A	2002[A]	0FZ	3	0
4	A	2004	MBO	26	0
4	A	2003[A]	MBO	7	0

The following is a two-dimensional graphical depiction of Mogul quality analysis of bond lengths, bond angles, torsion angles, and ring geometry for all instances of the Ligand of Interest. In addition, ligands with molecular weight > 250 and outliers as shown on the validation Tables will also be included. For torsion angles, if less than 5% of the Mogul distribution of torsion angles is within 10 degrees of the torsion angle in question, then that torsion angle is considered an outlier. Any bond that is central to one or more torsion angles identified as an outlier by Mogul will be highlighted in the graph. For rings, the root-mean-square deviation (RMSD) between the ring in question and similar rings identified by Mogul is calculated over all ring torsion angles. If the average RMSD is greater than 60 degrees and the minimal RMSD between the ring in question and any Mogul-identified rings is also greater than 60 degrees, then that ring is considered an outlier. The outliers are highlighted in purple. The color gray indicates Mogul did not find sufficient equivalents in the CSD to analyse the geometry.







5.7 Other polymers [i](#)

There are no such residues in this entry.

5.8 Polymer linkage issues [i](#)

There are no chain breaks in this entry.

6 Fit of model and data [i](#)

6.1 Protein, DNA and RNA chains [i](#)

In the following table, the column labelled '#RSRZ> 2' contains the number (and percentage) of RSRZ outliers, followed by percent RSRZ outliers for the chain as percentile scores relative to all X-ray entries and entries of similar resolution. The OWAB column contains the minimum, median, 95th percentile and maximum values of the occupancy-weighted average B-factor per residue. The column labelled 'Q< 0.9' lists the number of (and percentage) of residues with an average occupancy less than 0.9.

Mol	Chain	Analysed	<RSRZ>	#RSRZ>2	OWAB(Å ²)	Q<0.9
1	A	258/259 (99%)	-0.32	5 (1%) 66 60	6, 11, 23, 36	1 (0%)

All (5) RSRZ outliers are listed below:

Mol	Chain	Res	Type	RSRZ
1	A	1235[A]	GLY	3.8
1	A	1042	PRO	2.8
1	A	1003	HIS	2.5
1	A	1004	HIS	2.5
1	A	1053[A]	GLN	2.2

6.2 Non-standard residues in protein, DNA, RNA chains [i](#)

There are no non-standard protein/DNA/RNA residues in this entry.

6.3 Carbohydrates [i](#)

There are no monosaccharides in this entry.

6.4 Ligands [i](#)

In the following table, the Atoms column lists the number of modelled atoms in the group and the number defined in the chemical component dictionary. The B-factors column lists the minimum, median, 95th percentile and maximum values of B factors of atoms in the group. The column labelled 'Q< 0.9' lists the number of atoms with occupancy less than 0.9.

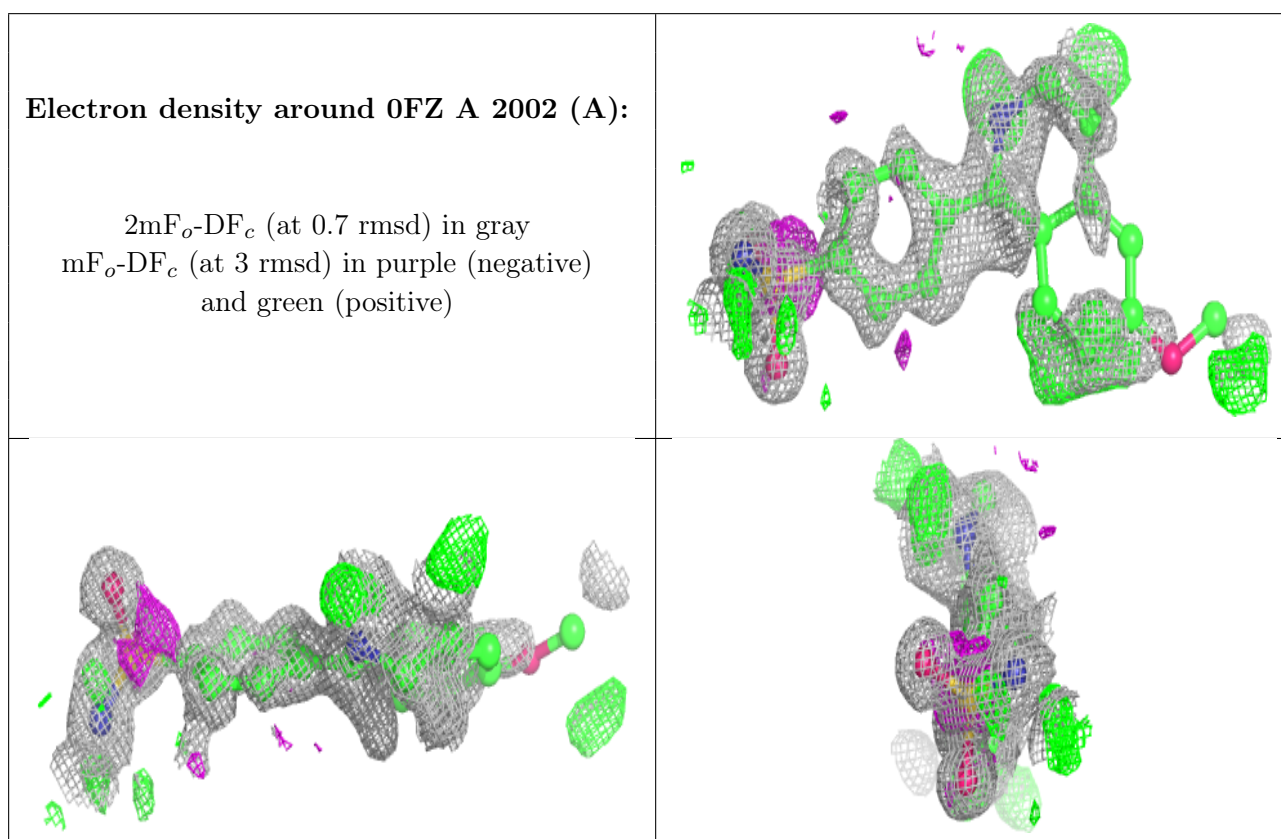
Mol	Type	Chain	Res	Atoms	RSCC	RSR	B-factors(Å ²)	Q<0.9
5	GOL	A	2006	6/6	0.69	0.27	39,44,49,63	0
5	GOL	A	2005	6/6	0.89	0.16	16,20,33,37	0

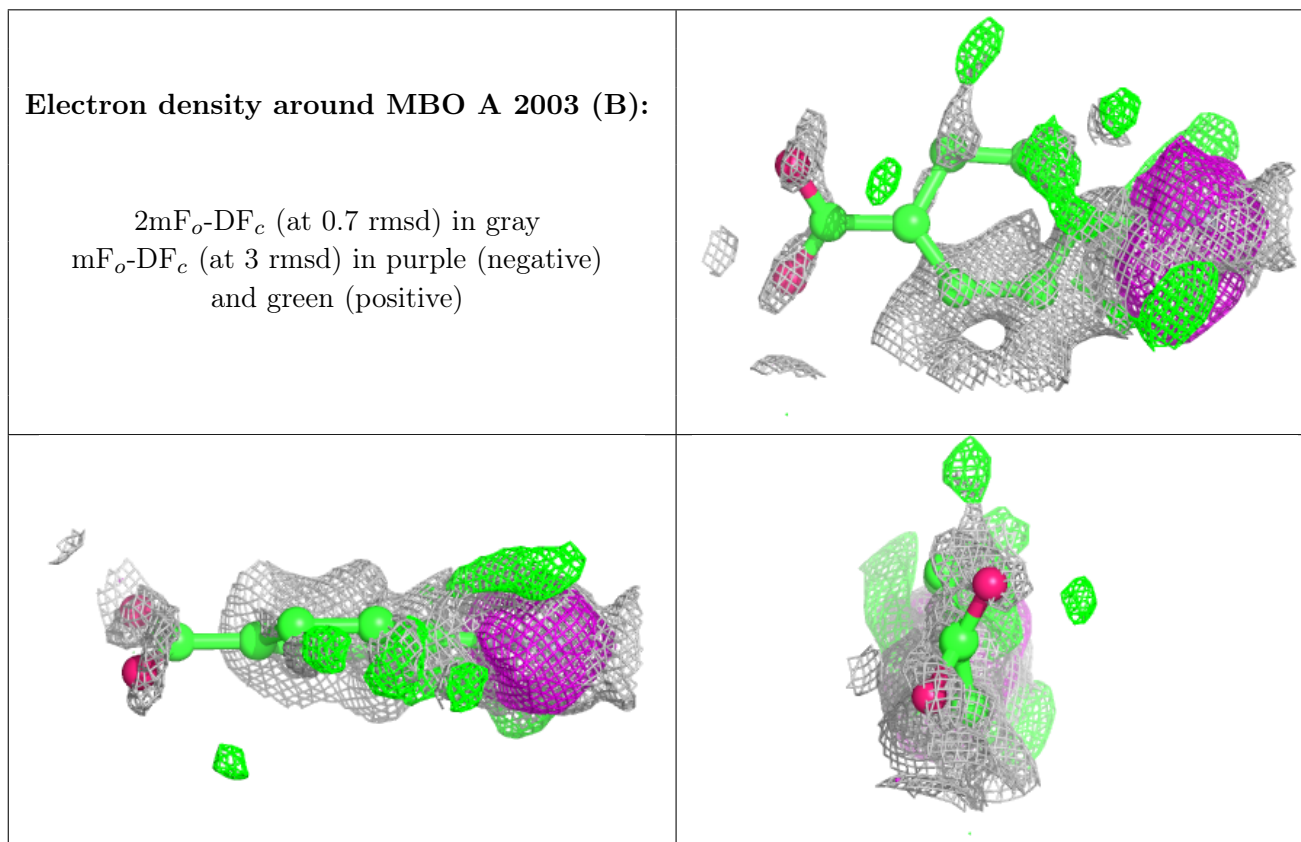
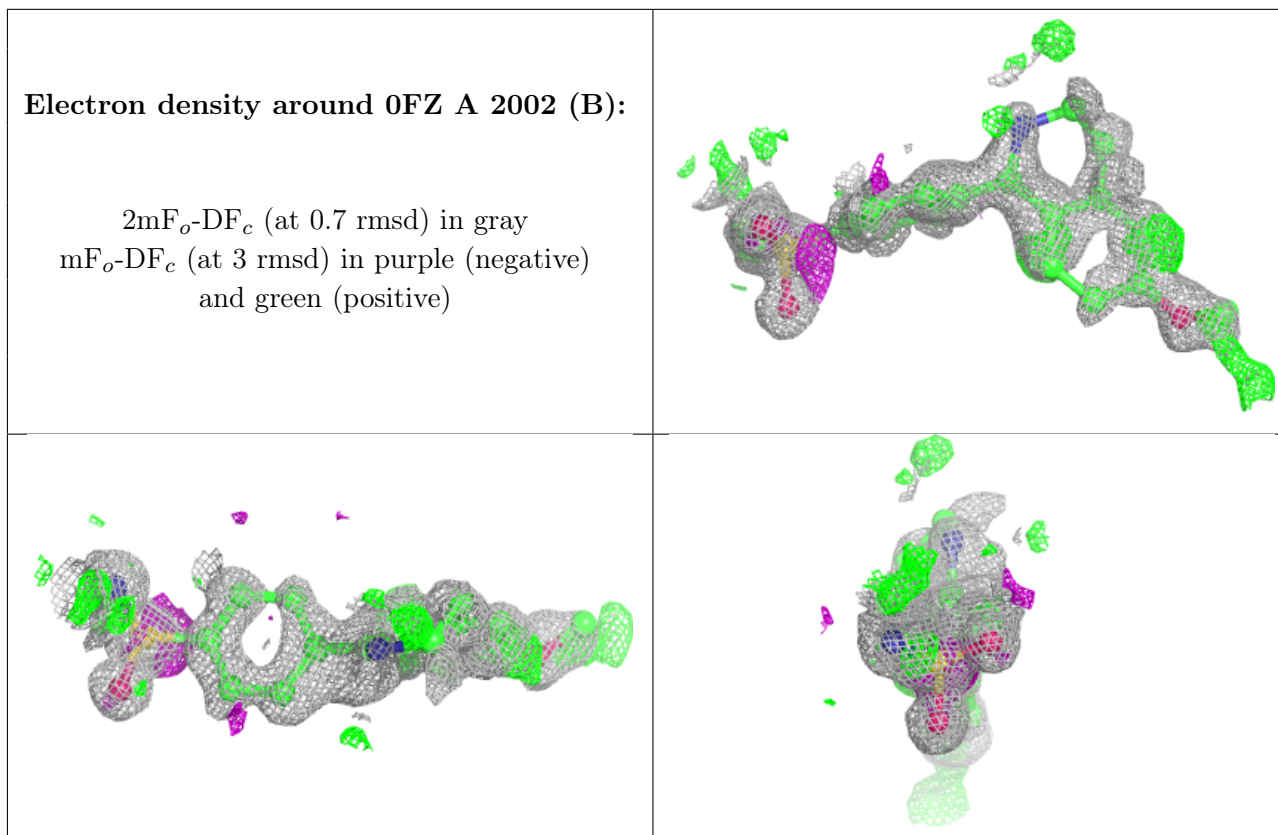
Continued on next page...

Continued from previous page...

Mol	Type	Chain	Res	Atoms	RSCC	RSR	B-factors(\AA^2)	Q<0.9
3	0FZ	A	2002[A]	22/22	0.95	0.16	9,25,32,35	22
3	0FZ	A	2002[B]	22/22	0.95	0.16	9,20,25,27	22
4	MBO	A	2003[B]	10/10	1.00	0.07	10,18,29,29	10
4	MBO	A	2004	10/10	1.00	0.10	14,18,29,29	10
2	ZN	A	2001	1/1	1.00	0.03	6,6,6,6	0
4	MBO	A	2003[A]	10/10	1.00	0.07	11,17,23,24	10

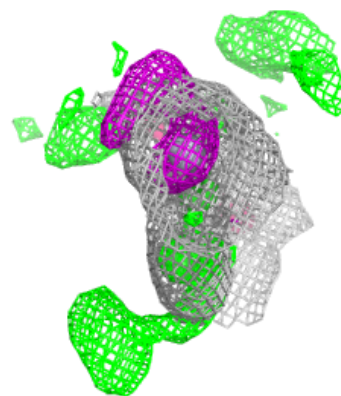
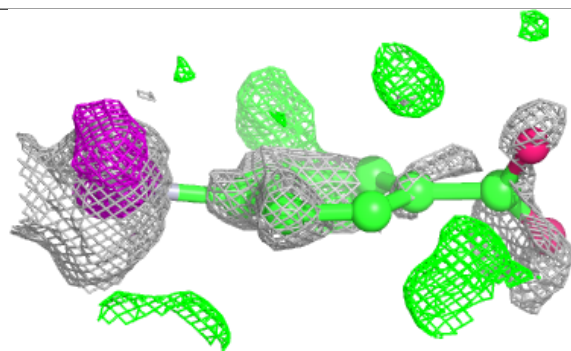
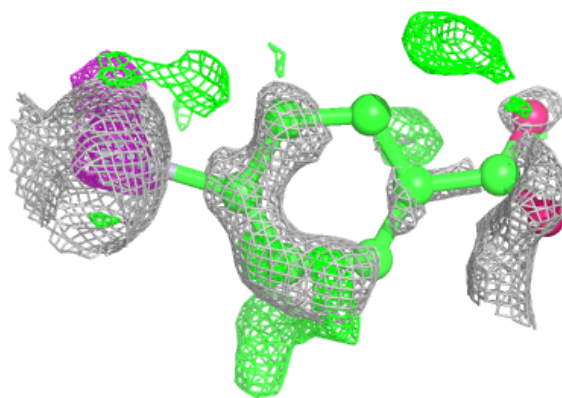
The following is a graphical depiction of the model fit to experimental electron density of all instances of the Ligand of Interest. In addition, ligands with molecular weight > 250 and outliers as shown on the geometry validation Tables will also be included. Each fit is shown from different orientation to approximate a three-dimensional view.



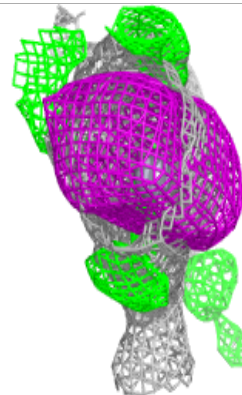
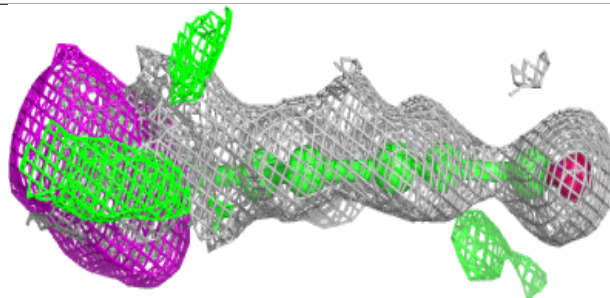
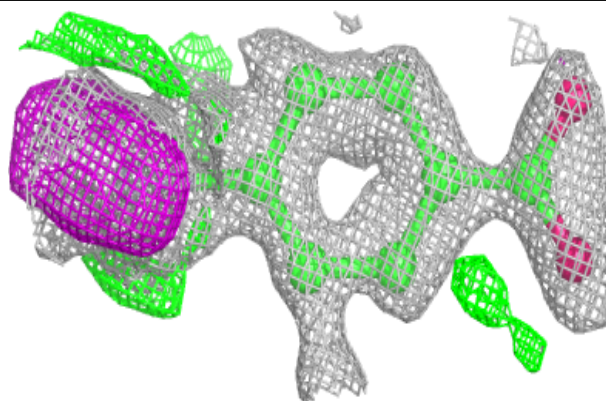


Electron density around MBO A 2004:

$2mF_o-DF_c$ (at 0.7 rmsd) in gray
 mF_o-DF_c (at 3 rmsd) in purple (negative)
and green (positive)

**Electron density around MBO A 2003 (A):**

$2mF_o-DF_c$ (at 0.7 rmsd) in gray
 mF_o-DF_c (at 3 rmsd) in purple (negative)
and green (positive)



6.5 Other polymers [i](#)

There are no such residues in this entry.