



wwPDB EM Validation Summary Report ⓘ

Feb 4, 2024 – 03:10 PM EST

PDB ID : 7UY8
EMDB ID : EMD-26867
Title : Tetrahymena Polymerase alpha-Primase
Authors : He, Y.; Song, H.; Chan, H.; Wang, Y.; Liu, B.; Susac, L.; Zhou, Z.H.; Feigon, J.
Deposited on : 2022-05-06
Resolution : 4.50 Å(reported)

This is a wwPDB EM Validation Summary Report for a publicly released PDB entry.

We welcome your comments at validation@mail.wwpdb.org

A user guide is available at

<https://www.wwpdb.org/validation/2017/EMValidationReportHelp>

with specific help available everywhere you see the ⓘ symbol.

The types of validation reports are described at

<http://www.wwpdb.org/validation/2017/FAQs#types>.

The following versions of software and data (see [references ⓘ](#)) were used in the production of this report:

EMDB validation analysis : 0.0.1.dev70
MolProbity : 4.02b-467
Percentile statistics : 20191225.v01 (using entries in the PDB archive December 25th 2019)
MapQ : 1.9.9
Ideal geometry (proteins) : Engh & Huber (2001)
Ideal geometry (DNA, RNA) : Parkinson et al. (1996)
Validation Pipeline (wwPDB-VP) : 2.36

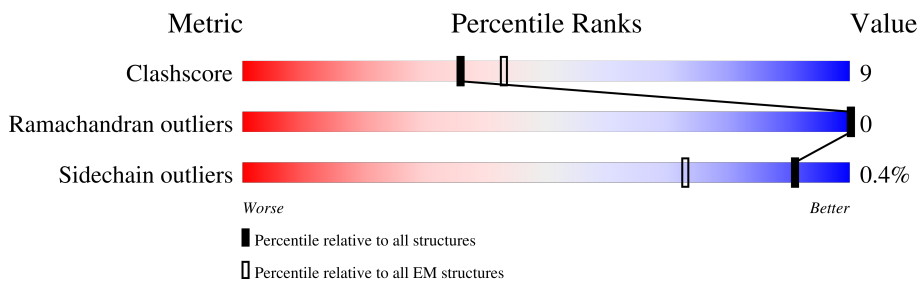
1 Overall quality at a glance

The following experimental techniques were used to determine the structure:

ELECTRON MICROSCOPY

The reported resolution of this entry is 4.50 Å.

Percentile scores (ranging between 0-100) for global validation metrics of the entry are shown in the following graphic. The table shows the number of entries on which the scores are based.



Metric	Whole archive (#Entries)	EM structures (#Entries)
Clashscore	158937	4297
Ramachandran outliers	154571	4023
Sidechain outliers	154315	3826

The table below summarises the geometric issues observed across the polymeric chains and their fit to the map. The red, orange, yellow and green segments of the bar indicate the fraction of residues that contain outliers for ≥ 3 , 2, 1 and 0 types of geometric quality criteria respectively. A grey segment represents the fraction of residues that are not modelled. The numeric value for each fraction is indicated below the corresponding segment, with a dot representing fractions $\leq 5\%$. The upper red bar (where present) indicates the fraction of residues that have poor fit to the EM map (all-atom inclusion $< 40\%$). The numeric value is given above the bar.

Mol	Chain	Length	Quality of chain
1	B	595	
2	A	1393	
3	D	540	
4	C	399	

2 Entry composition i

There are 5 unique types of molecules in this entry. The entry contains 9552 atoms, of which 0 are hydrogens and 0 are deuteriums.

In the tables below, the AltConf column contains the number of residues with at least one atom in alternate conformation and the Trace column contains the number of residues modelled with at most 2 atoms.

- Molecule 1 is a protein called DNA polymerase alpha subunit B.

Mol	Chain	Residues	Atoms					AltConf	Trace
			Total	C	N	O	S		
1	B	392	3187	2042	529	605	11	0	0

- Molecule 2 is a protein called DNA polymerase.

Mol	Chain	Residues	Atoms					AltConf	Trace
			Total	C	N	O	S		
2	A	156	1255	799	210	240	6	0	0

- Molecule 3 is a protein called Eukaryotic-type DNA primase, large subunit.

Mol	Chain	Residues	Atoms					AltConf	Trace
			Total	C	N	O	S		
3	D	241	2007	1293	337	368	9	0	0

- Molecule 4 is a protein called DNA primase.

Mol	Chain	Residues	Atoms					AltConf	Trace
			Total	C	N	O	S		
4	C	372	3102	1989	516	581	16	0	0

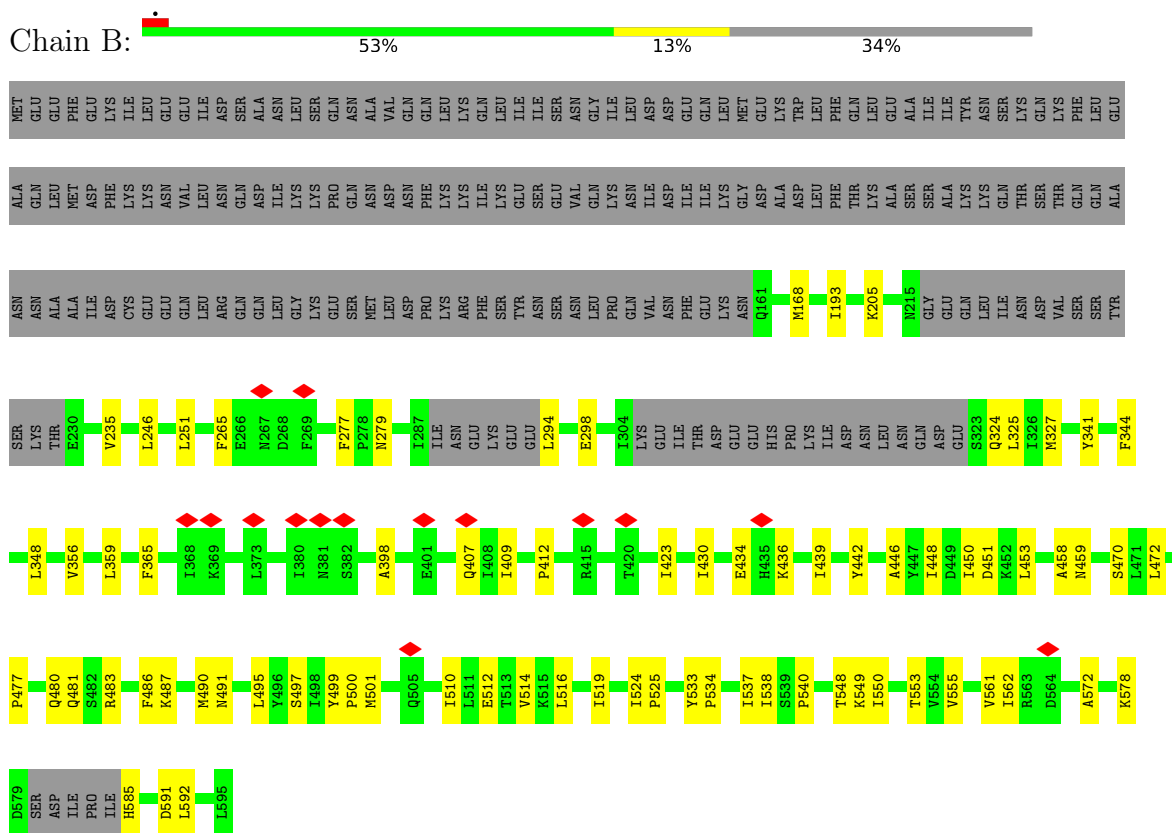
- Molecule 5 is ZINC ION (three-letter code: ZN) (formula: Zn) (labeled as "Ligand of Interest" by depositor).

Mol	Chain	Residues	Atoms		AltConf
			Total	Zn	
5	A	1	1	1	0

3 Residue-property plots [i](#)

These plots are drawn for all protein, RNA, DNA and oligosaccharide chains in the entry. The first graphic for a chain summarises the proportions of the various outlier classes displayed in the second graphic. The second graphic shows the sequence view annotated by issues in geometry and atom inclusion in map density. Residues are color-coded according to the number of geometric quality criteria for which they contain at least one outlier: green = 0, yellow = 1, orange = 2 and red = 3 or more. A red diamond above a residue indicates a poor fit to the EM map for this residue (all-atom inclusion < 40%). Stretches of 2 or more consecutive residues without any outlier are shown as a green connector. Residues present in the sample, but not in the model, are shown in grey.

- Molecule 1: DNA polymerase alpha subunit B



- Molecule 2: DNA polymerase



GLU	ASN	A1265	ASN	GLN
ASN	A1268	ASN	GLU	GLU
A1269	ASN	ASP	ALA	ALA
I1270	ASN	GLU	GLU	GLU
S1271	ASN	ASP	ASP	ASP
I1272	ASN	ASP	ASP	ASP
C1273	ASN	ASP	ASP	ASP
K1274	ASN	ASP	ASP	ASP
C1275	ASN	ASP	ASP	ASP
G1276	ASN	ASP	ASP	ASP
M1277	ASN	ASP	ASP	ASP
D1278	ASN	ASP	ASP	ASP
I1279	ASN	ASP	ASP	ASP
Y1280	ASN	ASP	ASP	ASP
L1283	ASN	ASP	ASP	ASP
K1286	ASN	ASP	ASP	ASP
I1287	ASN	ASP	ASP	ASP
R1296	ASN	ASP	ASP	ASP
M1307	ASN	ASP	ASP	ASP
E1308	ASN	ASP	ASP	ASP
E1309	ASN	ASP	ASP	ASP
F1310	ASN	ASP	ASP	ASP
H1314	ASN	ASP	ASP	ASP
M1327	ASN	ASP	ASP	ASP
T1331	ASN	ASP	ASP	ASP
L1336	ASN	ASP	ASP	ASP
D1344	ASN	ASP	ASP	ASP
I1345	ASN	ASP	ASP	ASP
Q1350	ASN	ASP	ASP	ASP
V1356	ASN	ASP	ASP	ASP
T1357	ASN	ASP	ASP	ASP
I1358	ASN	ASP	ASP	ASP
E1359	ASN	ASP	ASP	ASP
K1360	ASN	ASP	ASP	ASP
I1361	ASN	ASP	ASP	ASP
K1362	ASN	ASP	ASP	ASP
T1363	ASN	ASP	ASP	ASP
I1364	ASN	ASP	ASP	ASP
K1365	ASN	ASP	ASP	ASP
K1366	ASN	ASP	ASP	ASP
D1370	ASN	ASP	ASP	ASP
L1371	ASN	ASP	ASP	ASP
L1372	ASN	ASP	ASP	ASP
M1378	ASN	ASP	ASP	ASP
S1232	ASN	ASP	ASP	ASP
K1233	ASN	ASP	ASP	ASP
R1234	ASN	ASP	ASP	ASP
M1235	ASN	ASP	ASP	ASP
Q1236	ASN	ASP	ASP	ASP
F1237	ASN	ASP	ASP	ASP
L1238	ASN	ASP	ASP	ASP
I1241	ASN	ASP	ASP	ASP
P1242	ASN	ASP	ASP	ASP
H1243	ASN	ASP	ASP	ASP
V1244	ASN	ASP	ASP	ASP
L1245	ASN	ASP	ASP	ASP
V1246	ASN	ASP	ASP	ASP
D1247	ASN	ASP	ASP	ASP
C1248	ASN	ASP	ASP	ASP
K1249	ASN	ASP	ASP	ASP
D1252	ASN	ASP	ASP	ASP
Q1253	ASN	ASP	ASP	ASP
T1254	ASN	ASP	ASP	ASP
F1255	ASN	ASP	ASP	ASP
L1256	ASN	ASP	ASP	ASP
F1257	ASN	ASP	ASP	ASP
L1258	ASN	ASP	ASP	ASP
G1259	ASN	ASP	ASP	ASP
I1260	ASN	ASP	ASP	ASP
LEU	ASN	ASP	ASP	ASP
GLU	ASN	ASP	ASP	ASP

4 Experimental information

Property	Value	Source
EM reconstruction method	SINGLE PARTICLE	Depositor
Imposed symmetry	POINT, Not provided	
Number of particles used	264498	Depositor
Resolution determination method	FSC 0.143 CUT-OFF	Depositor
CTF correction method	PHASE FLIPPING AND AMPLITUDE CORRECTION	Depositor
Microscope	FEI TITAN KRIOS	Depositor
Voltage (kV)	300	Depositor
Electron dose ($e^-/\text{\AA}^2$)	55	Depositor
Minimum defocus (nm)	800	Depositor
Maximum defocus (nm)	4000	Depositor
Magnification	Not provided	
Image detector	GATAN K3 (6k x 4k)	Depositor
Maximum map value	0.040	Depositor
Minimum map value	-0.011	Depositor
Average map value	0.000	Depositor
Map value standard deviation	0.002	Depositor
Recommended contour level	0.013	Depositor
Map size (\AA)	281.6, 281.6, 281.6	wwPDB
Map dimensions	256, 256, 256	wwPDB
Map angles ($^\circ$)	90.0, 90.0, 90.0	wwPDB
Pixel spacing (\AA)	1.1, 1.1, 1.1	Depositor

5 Model quality [i](#)

5.1 Standard geometry [i](#)

Bond lengths and bond angles in the following residue types are not validated in this section:
ZN

The Z score for a bond length (or angle) is the number of standard deviations the observed value is removed from the expected value. A bond length (or angle) with $|Z| > 5$ is considered an outlier worth inspection. RMSZ is the root-mean-square of all Z scores of the bond lengths (or angles).

Mol	Chain	Bond lengths		Bond angles	
		RMSZ	# Z >5	RMSZ	# Z >5
1	B	0.26	0/3244	0.51	0/4392
2	A	0.25	0/1267	0.48	0/1697
3	D	0.25	0/2042	0.44	0/2733
4	C	0.25	0/3166	0.50	0/4257
All	All	0.25	0/9719	0.49	0/13079

There are no bond length outliers.

There are no bond angle outliers.

There are no chirality outliers.

There are no planarity outliers.

5.2 Too-close contacts [i](#)

In the following table, the Non-H and H(model) columns list the number of non-hydrogen atoms and hydrogen atoms in the chain respectively. The H(added) column lists the number of hydrogen atoms added and optimized by MolProbity. The Clashes column lists the number of clashes within the asymmetric unit, whereas Symm-Clashes lists symmetry-related clashes.

Mol	Chain	Non-H	H(model)	H(added)	Clashes	Symm-Clashes
1	B	3187	0	3213	48	0
2	A	1255	0	1300	26	0
3	D	2007	0	2036	26	0
4	C	3102	0	3112	69	0
5	A	1	0	0	0	0
All	All	9552	0	9661	164	0

The all-atom clashscore is defined as the number of clashes found per 1000 atoms (including hydrogen atoms). The all-atom clashscore for this structure is 9.

The worst 5 of 164 close contacts within the same asymmetric unit are listed below, sorted by their clash magnitude.

Atom-1	Atom-2	Interatomic distance (Å)	Clash overlap (Å)
4:C:256:LEU:HD12	4:C:258:MET:H	1.46	0.81
4:C:33:VAL:HG11	4:C:78:LYS:HE3	1.69	0.74
4:C:125:ARG:NH1	4:C:128:CYS:SG	2.61	0.74
4:C:168:ARG:HE	4:C:346:THR:HG21	1.50	0.74
1:B:561:VAL:HG12	1:B:562:ILE:HD12	1.70	0.73

There are no symmetry-related clashes.

5.3 Torsion angles [i](#)

5.3.1 Protein backbone [i](#)

In the following table, the Percentiles column shows the percent Ramachandran outliers of the chain as a percentile score with respect to all PDB entries followed by that with respect to all EM entries.

The Analysed column shows the number of residues for which the backbone conformation was analysed, and the total number of residues.

Mol	Chain	Analysed	Favoured	Allowed	Outliers	Percentiles	
1	B	382/595 (64%)	350 (92%)	32 (8%)	0	100	100
2	A	152/1393 (11%)	147 (97%)	5 (3%)	0	100	100
3	D	235/540 (44%)	231 (98%)	4 (2%)	0	100	100
4	C	366/399 (92%)	338 (92%)	28 (8%)	0	100	100
All	All	1135/2927 (39%)	1066 (94%)	69 (6%)	0	100	100

There are no Ramachandran outliers to report.

5.3.2 Protein sidechains [i](#)

In the following table, the Percentiles column shows the percent sidechain outliers of the chain as a percentile score with respect to all PDB entries followed by that with respect to all EM entries.

The Analysed column shows the number of residues for which the sidechain conformation was analysed, and the total number of residues.

Mol	Chain	Analysed	Rotameric	Outliers	Percentiles	
1	B	371/560 (66%)	371 (100%)	0	100	100
2	A	145/1297 (11%)	143 (99%)	2 (1%)	67	81
3	D	222/503 (44%)	221 (100%)	1 (0%)	88	93
4	C	351/376 (93%)	350 (100%)	1 (0%)	92	95
All	All	1089/2736 (40%)	1085 (100%)	4 (0%)	91	94

All (4) residues with a non-rotameric sidechain are listed below:

Mol	Chain	Res	Type
2	A	1296	ARG
2	A	1366	LYS
3	D	188	LYS
4	C	100	LYS

Sometimes sidechains can be flipped to improve hydrogen bonding and reduce clashes. All (2) such sidechains are listed below:

Mol	Chain	Res	Type
1	B	164	ASN
1	B	440	HIS

5.3.3 RNA [i](#)

There are no RNA molecules in this entry.

5.4 Non-standard residues in protein, DNA, RNA chains [i](#)

There are no non-standard protein/DNA/RNA residues in this entry.

5.5 Carbohydrates [i](#)

There are no monosaccharides in this entry.

5.6 Ligand geometry [i](#)

Of 1 ligands modelled in this entry, 1 is monoatomic - leaving 0 for Mogul analysis.

There are no bond length outliers.

There are no bond angle outliers.

There are no chirality outliers.

There are no torsion outliers.

There are no ring outliers.

No monomer is involved in short contacts.

5.7 Other polymers

There are no such residues in this entry.

5.8 Polymer linkage issues

There are no chain breaks in this entry.

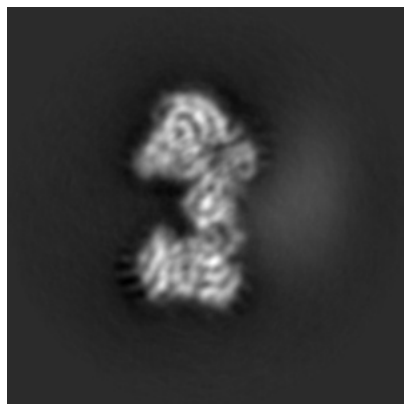
6 Map visualisation [i](#)

This section contains visualisations of the EMDB entry EMD-26867. These allow visual inspection of the internal detail of the map and identification of artifacts.

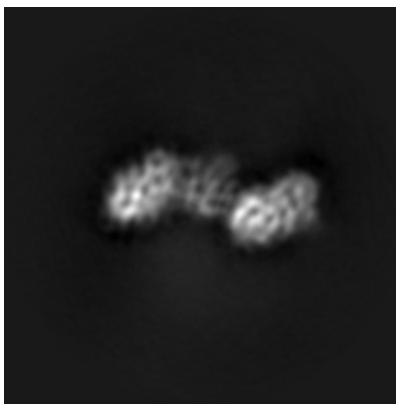
Images derived from a raw map, generated by summing the deposited half-maps, are presented below the corresponding image components of the primary map to allow further visual inspection and comparison with those of the primary map.

6.1 Orthogonal projections [i](#)

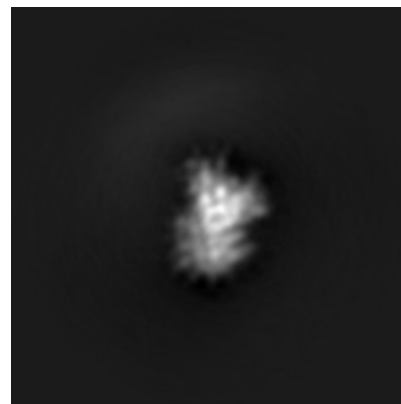
6.1.1 Primary map



X

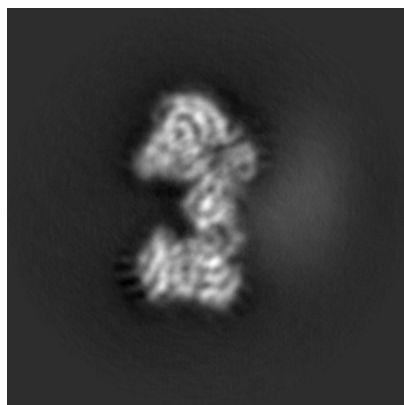


Y

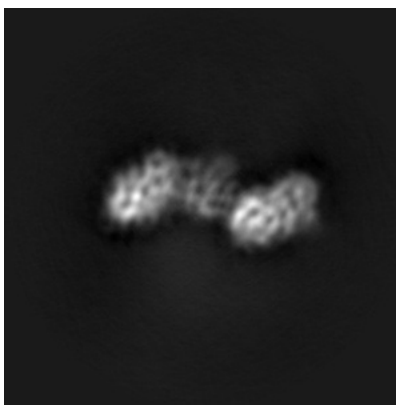


Z

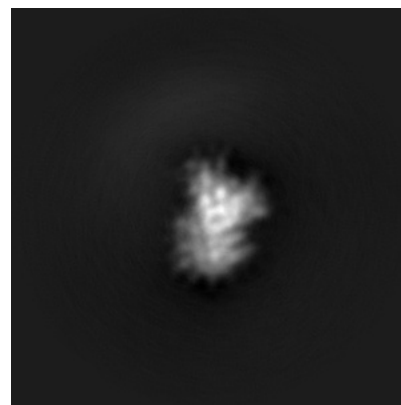
6.1.2 Raw map



X



Y

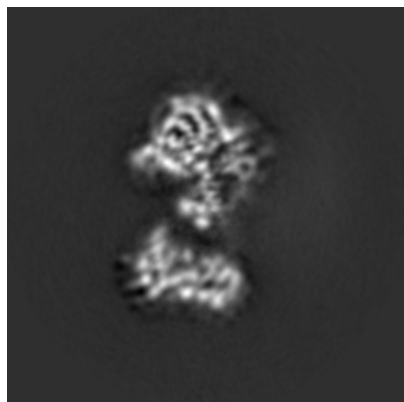


Z

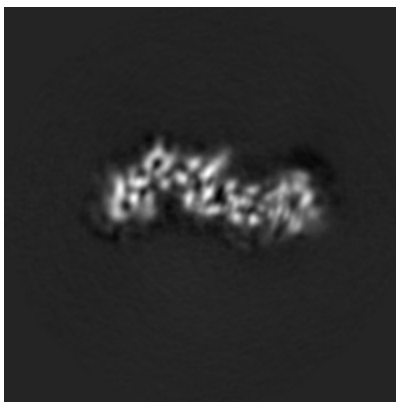
The images above show the map projected in three orthogonal directions.

6.2 Central slices [i](#)

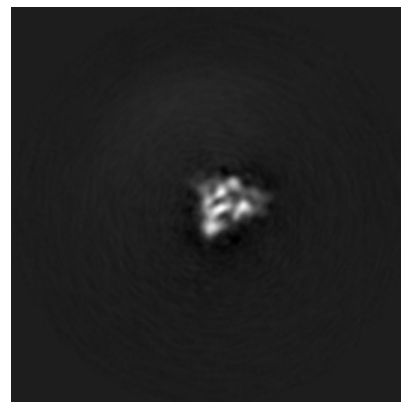
6.2.1 Primary map



X Index: 128

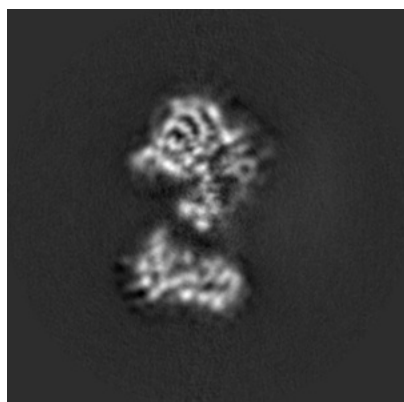


Y Index: 128

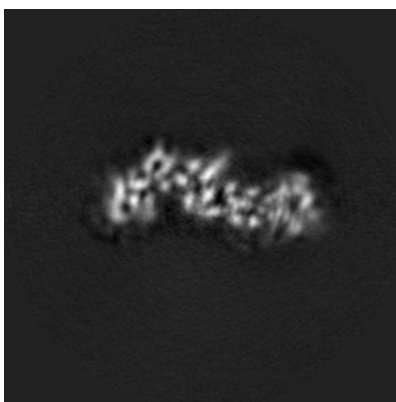


Z Index: 128

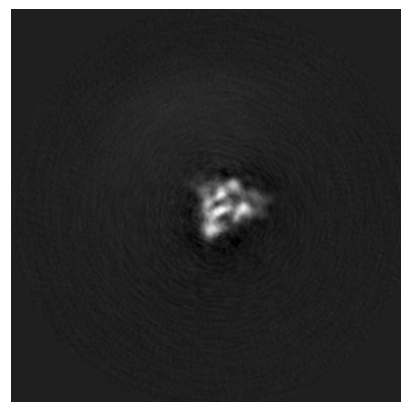
6.2.2 Raw map



X Index: 128



Y Index: 128

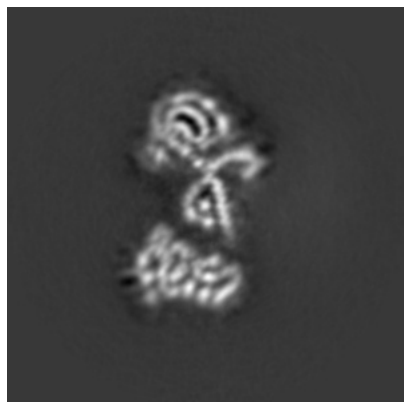


Z Index: 128

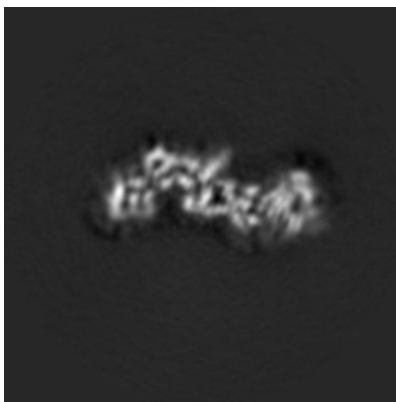
The images above show central slices of the map in three orthogonal directions.

6.3 Largest variance slices [i](#)

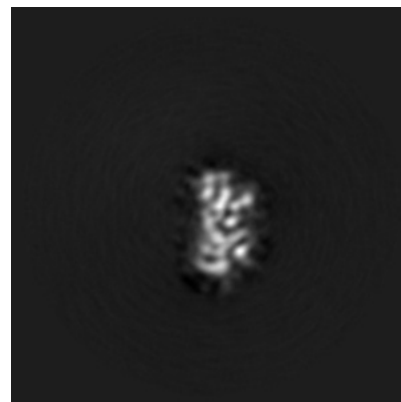
6.3.1 Primary map



X Index: 133

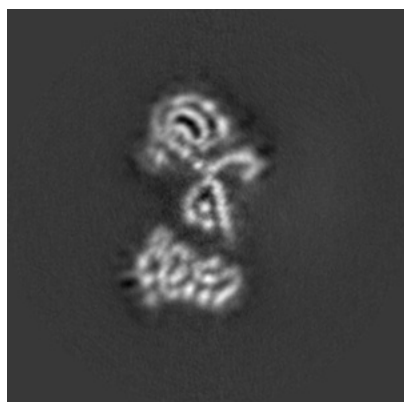


Y Index: 126

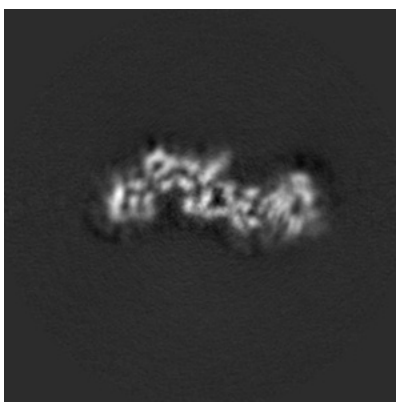


Z Index: 83

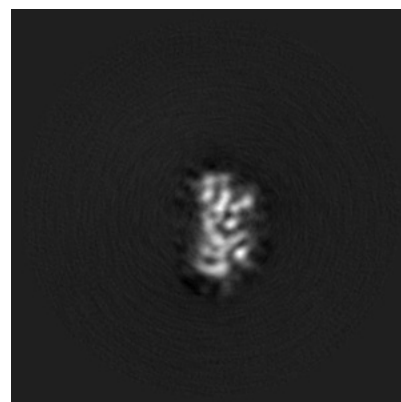
6.3.2 Raw map



X Index: 133



Y Index: 126



Z Index: 83

The images above show the largest variance slices of the map in three orthogonal directions.

6.4 Orthogonal standard-deviation projections (False-color) [i](#)

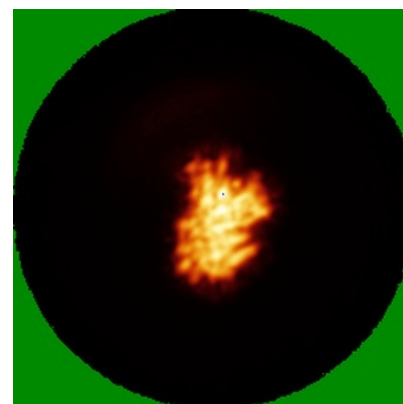
6.4.1 Primary map



X



Y



Z

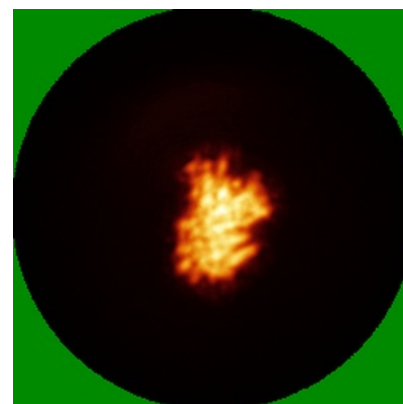
6.4.2 Raw map



X



Y



Z

The images above show the map standard deviation projections with false color in three orthogonal directions. Minimum values are shown in green, max in blue, and dark to light orange shades represent small to large values respectively.

6.5 Orthogonal surface views [i](#)

6.5.1 Primary map



X



Y



Z

The images above show the 3D surface view of the map at the recommended contour level 0.013. These images, in conjunction with the slice images, may facilitate assessment of whether an appropriate contour level has been provided.

6.5.2 Raw map



X



Y



Z

These images show the 3D surface of the raw map. The raw map's contour level was selected so that its surface encloses the same volume as the primary map does at its recommended contour level.

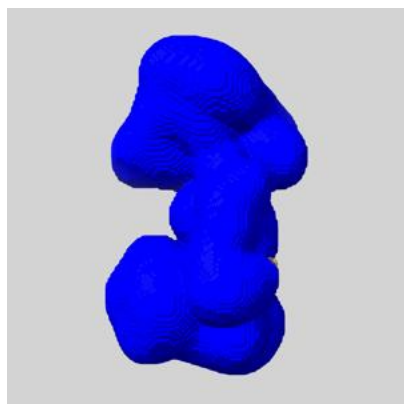
6.6 Mask visualisation [i](#)

This section shows the 3D surface view of the primary map at 50% transparency overlaid with the specified mask at 0% transparency

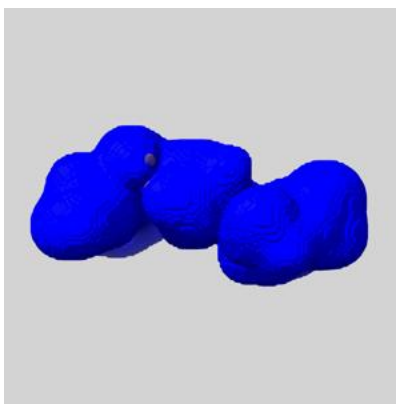
A mask typically either:

- Encompasses the whole structure
- Separates out a domain, a functional unit, a monomer or an area of interest from a larger structure

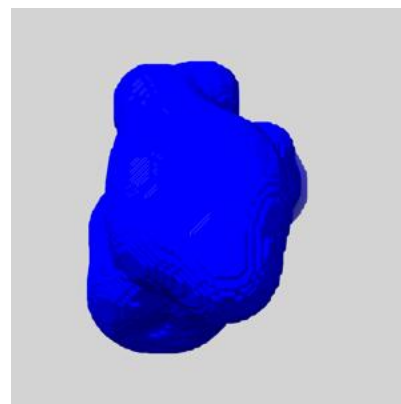
6.6.1 emd_26867_msk_1.map [i](#)



X



Y

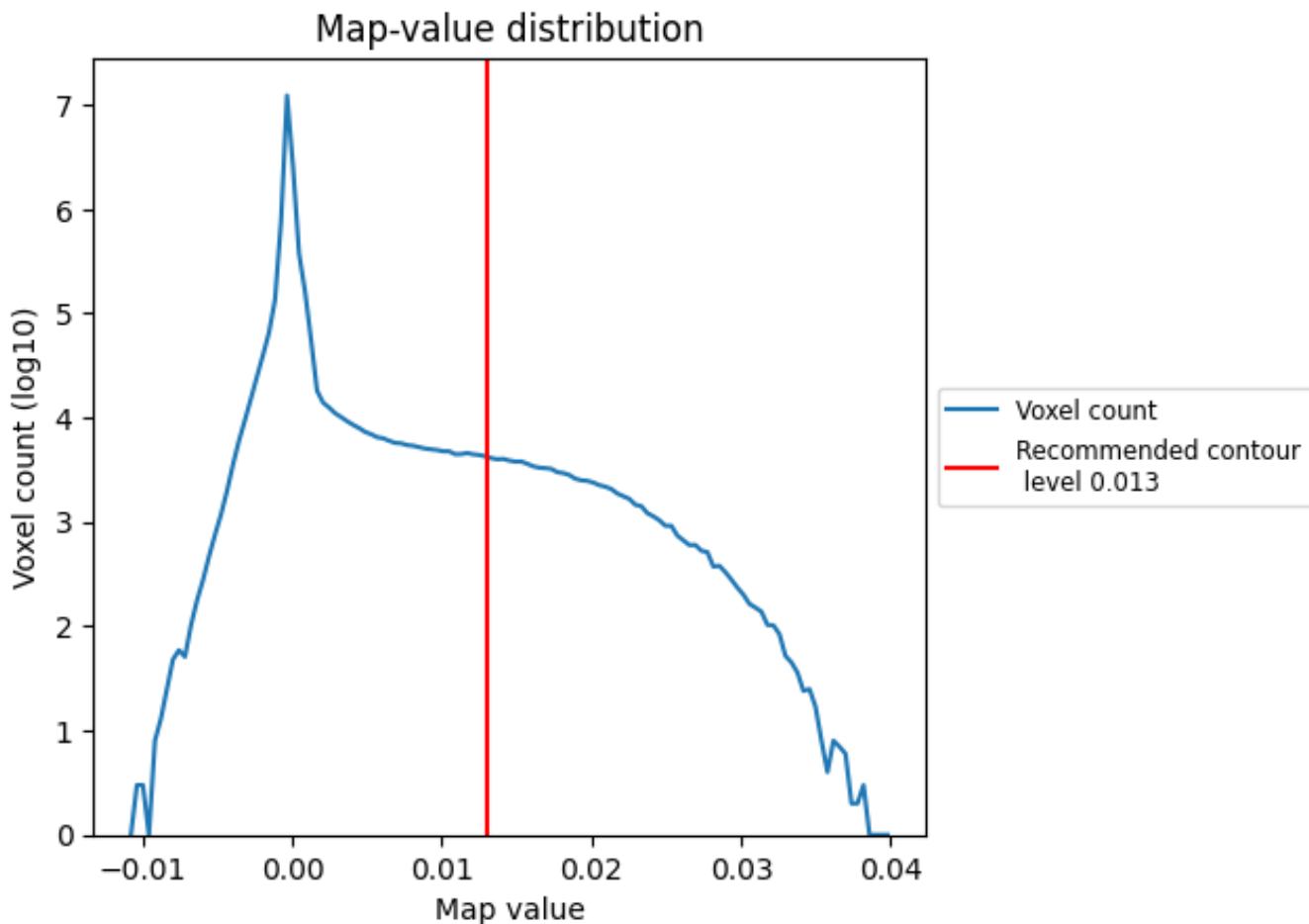


Z

7 Map analysis [i](#)

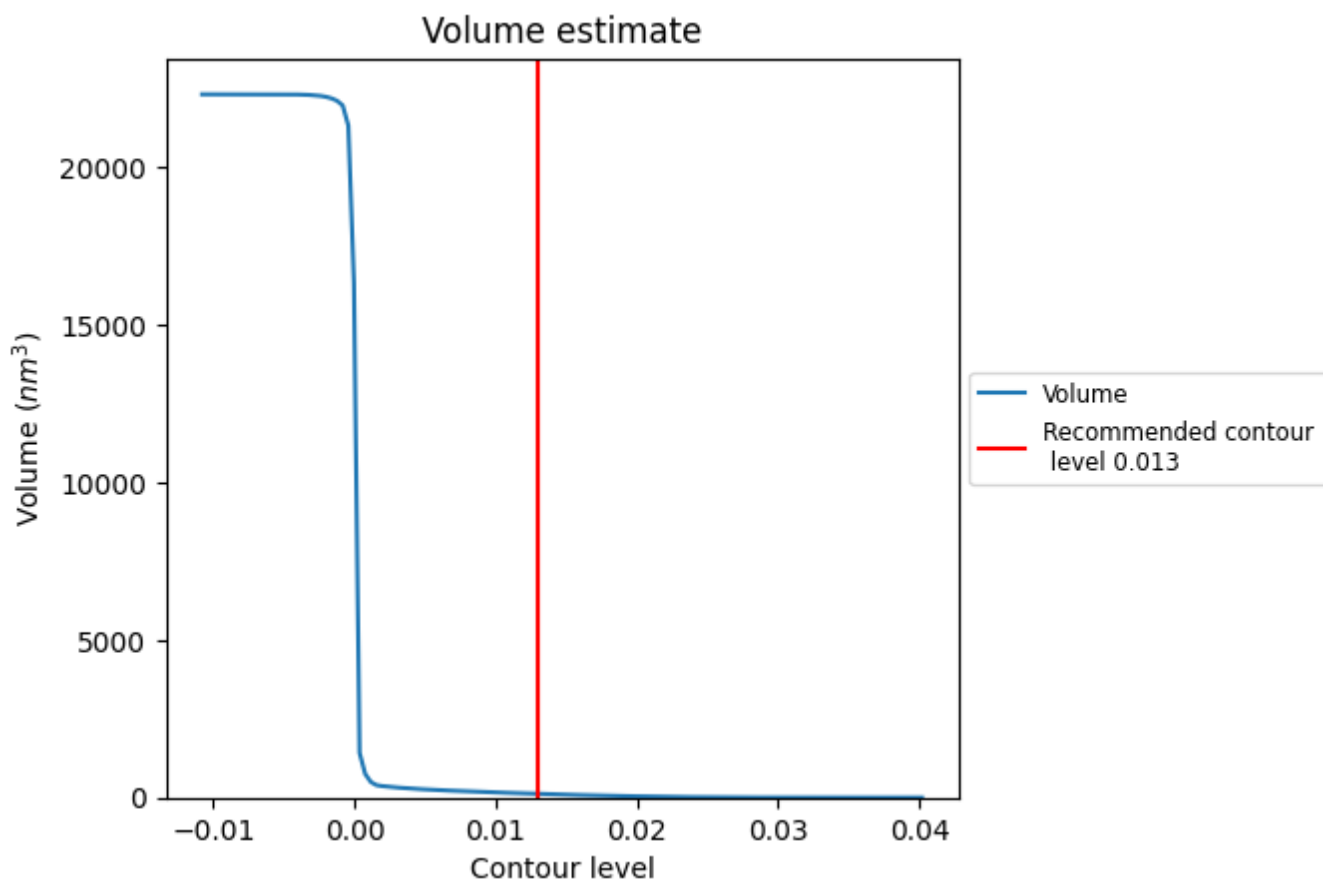
This section contains the results of statistical analysis of the map.

7.1 Map-value distribution [i](#)



The map-value distribution is plotted in 128 intervals along the x-axis. The y-axis is logarithmic. A spike in this graph at zero usually indicates that the volume has been masked.

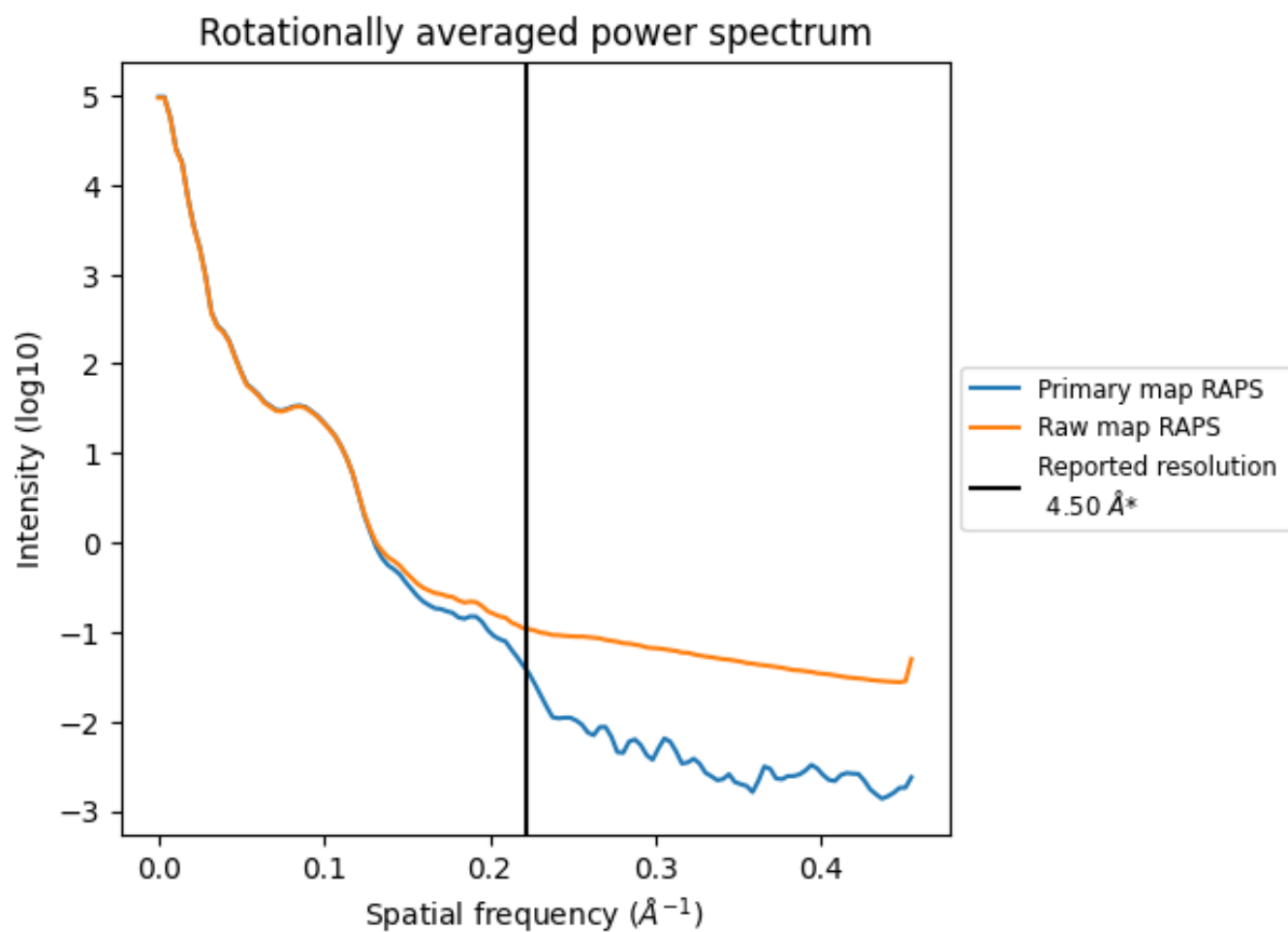
7.2 Volume estimate [\(i\)](#)



The volume at the recommended contour level is 118 nm³; this corresponds to an approximate mass of 107 kDa.

The volume estimate graph shows how the enclosed volume varies with the contour level. The recommended contour level is shown as a vertical line and the intersection between the line and the curve gives the volume of the enclosed surface at the given level.

7.3 Rotationally averaged power spectrum i

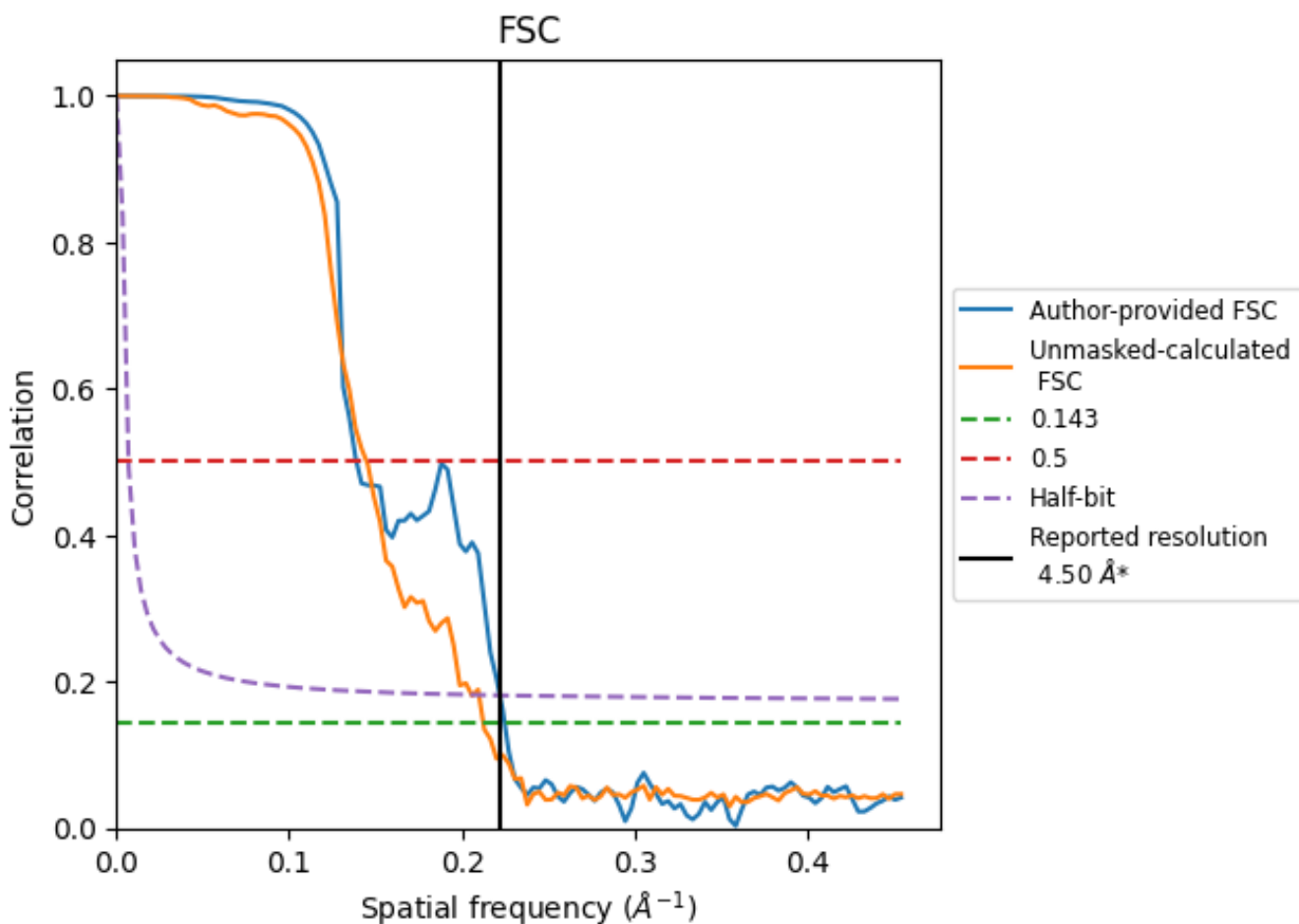


*Reported resolution corresponds to spatial frequency of 0.222 \AA^{-1}

8 Fourier-Shell correlation [i](#)

Fourier-Shell Correlation (FSC) is the most commonly used method to estimate the resolution of single-particle and subtomogram-averaged maps. The shape of the curve depends on the imposed symmetry, mask and whether or not the two 3D reconstructions used were processed from a common reference. The reported resolution is shown as a black line. A curve is displayed for the half-bit criterion in addition to lines showing the 0.143 gold standard cut-off and 0.5 cut-off.

8.1 FSC [i](#)



*Reported resolution corresponds to spatial frequency of 0.222 Å⁻¹

8.2 Resolution estimates [i](#)

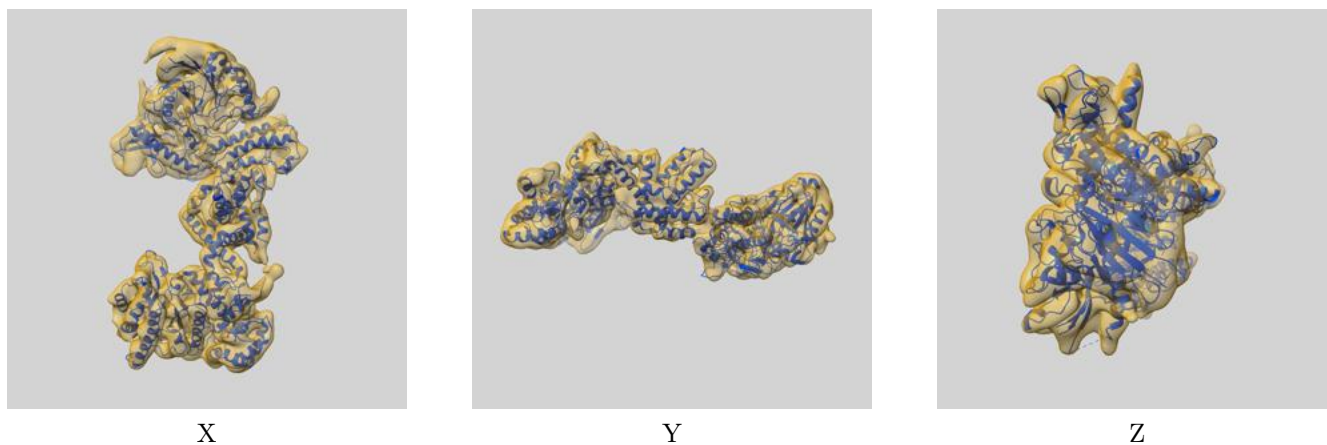
Resolution estimate (Å)	Estimation criterion (FSC cut-off)		
	0.143	0.5	Half-bit
Reported by author	4.50	-	-
Author-provided FSC curve	4.45	7.19	4.50
Unmasked-calculated*	4.71	6.89	4.86

*Resolution estimate based on FSC curve calculated by comparison of deposited half-maps.

9 Map-model fit [i](#)

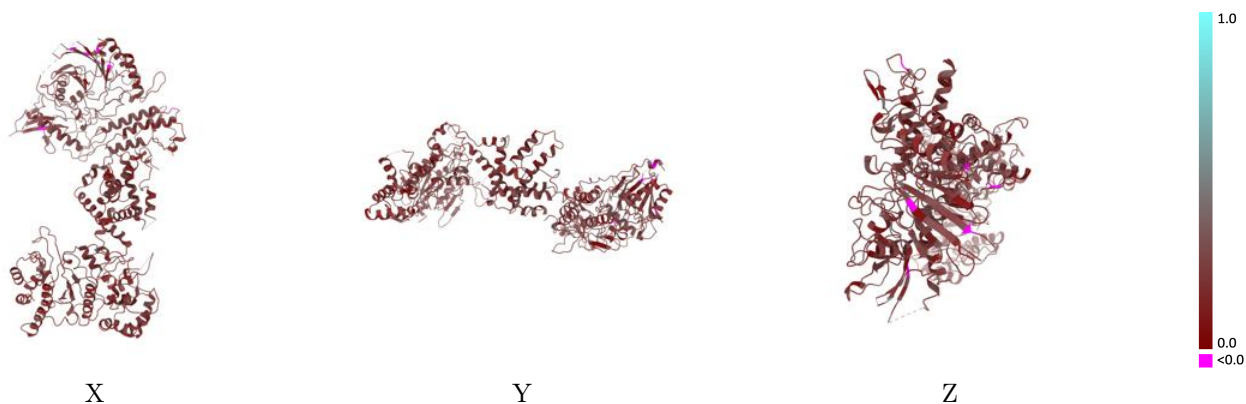
This section contains information regarding the fit between EMDB map EMD-26867 and PDB model 7UY8. Per-residue inclusion information can be found in section 3 on page 4.

9.1 Map-model overlay [i](#)



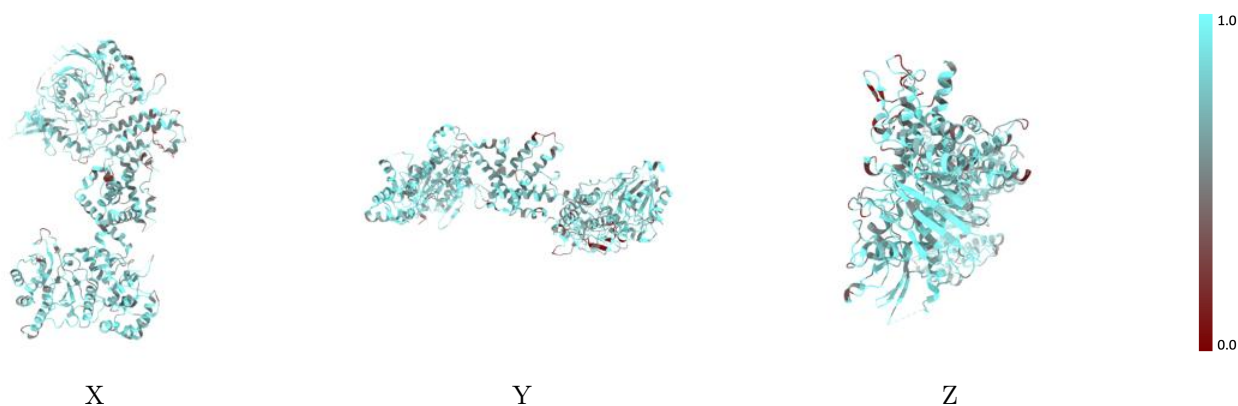
The images above show the 3D surface view of the map at the recommended contour level 0.013 at 50% transparency in yellow overlaid with a ribbon representation of the model coloured in blue. These images allow for the visual assessment of the quality of fit between the atomic model and the map.

9.2 Q-score mapped to coordinate model [\(i\)](#)



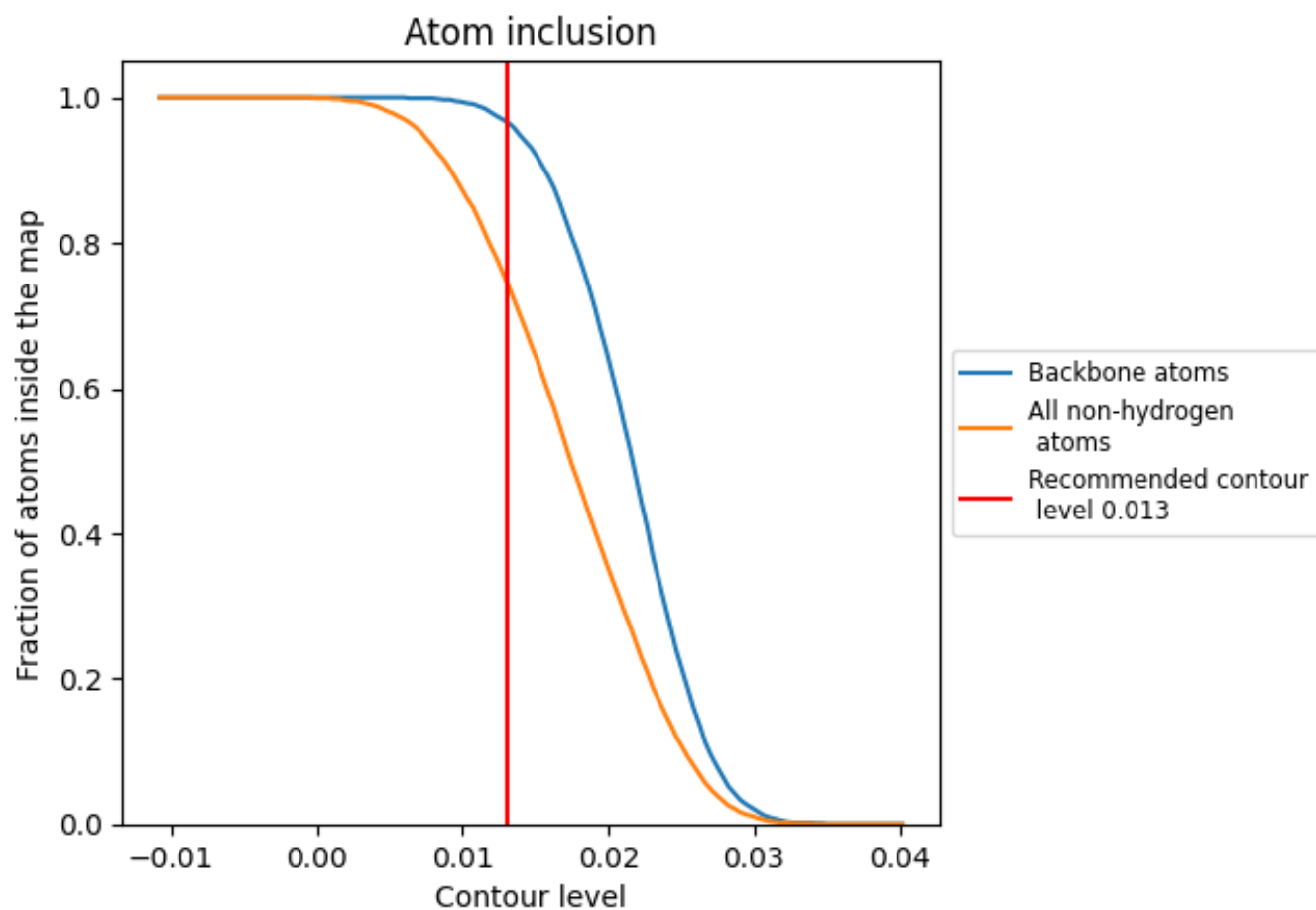
The images above show the model with each residue coloured according to its Q-score. This shows their resolvability in the map with higher Q-score values reflecting better resolvability. Please note: Q-score is calculating the resolvability of atoms, and thus high values are only expected at resolutions at which atoms can be resolved. Low Q-score values may therefore be expected for many entries.

9.3 Atom inclusion mapped to coordinate model [\(i\)](#)



The images above show the model with each residue coloured according to its atom inclusion. This shows to what extent they are inside the map at the recommended contour level (0.013).








9.4 Atom inclusion [i](#)



At the recommended contour level, 97% of all backbone atoms, 75% of all non-hydrogen atoms, are inside the map.

9.5 Map-model fit summary

The table lists the average atom inclusion at the recommended contour level (0.013) and Q-score for the entire model and for each chain.

Chain	Atom inclusion	Q-score
All	 0.7470	 0.2290
A	 0.6650	 0.2360
B	 0.7690	 0.2370
C	 0.7830	 0.2170
D	 0.7100	 0.2310

