



# Full wwPDB X-ray Structure Validation Report ⓘ

Dec 4, 2023 – 08:05 pm GMT

PDB ID : 2UY5  
Title : ScCTS1\_kinetin crystal structure  
Authors : Hurtado-Guerrero, R.; van Aalten, D.M.F.  
Deposited on : 2007-04-02  
Resolution : 1.60 Å(reported)

This is a Full wwPDB X-ray Structure Validation Report for a publicly released PDB entry.

We welcome your comments at [validation@mail.wwpdb.org](mailto:validation@mail.wwpdb.org)

A user guide is available at

<https://www.wwpdb.org/validation/2017/XrayValidationReportHelp>

with specific help available everywhere you see the ⓘ symbol.

The types of validation reports are described at

<http://www.wwpdb.org/validation/2017/FAQs#types>.

---

The following versions of software and data (see [references ⓘ](#)) were used in the production of this report:

MolProbity : 4.02b-467  
Mogul : 1.8.4, CSD as541be (2020)  
Xtriage (Phenix) : 1.13  
EDS : 2.36  
Percentile statistics : 20191225.v01 (using entries in the PDB archive December 25th 2019)  
Refmac : 5.8.0158  
CCP4 : 7.0.044 (Gargrove)  
Ideal geometry (proteins) : Engh & Huber (2001)  
Ideal geometry (DNA, RNA) : Parkinson et al. (1996)  
Validation Pipeline (wwPDB-VP) : 2.36

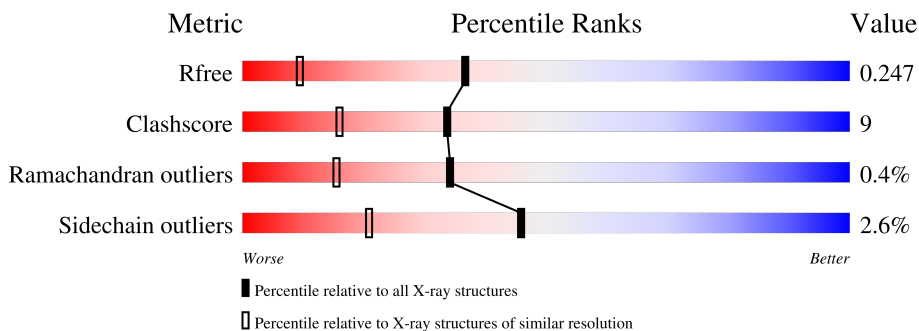
# 1 Overall quality at a glance

The following experimental techniques were used to determine the structure:

*X-RAY DIFFRACTION*


The reported resolution of this entry is 1.60 Å.

Percentile scores (ranging between 0-100) for global validation metrics of the entry are shown in the following graphic. The table shows the number of entries on which the scores are based.



Metric	Whole archive (#Entries)	Similar resolution (#Entries, resolution range(Å))
$R_{free}$	130704	3398 (1.60-1.60)
Clashscore	141614	3665 (1.60-1.60)
Ramachandran outliers	138981	3564 (1.60-1.60)
Sidechain outliers	138945	3563 (1.60-1.60)

The table below summarises the geometric issues observed across the polymeric chains and their fit to the electron density. The red, orange, yellow and green segments of the lower bar indicate the fraction of residues that contain outliers for  $\geq 3$ , 2, 1 and 0 types of geometric quality criteria respectively. A grey segment represents the fraction of residues that are not modelled. The numeric value for each fraction is indicated below the corresponding segment, with a dot representing fractions  $\leq 5\%$ .

Mol	Chain	Length	Quality of chain
1	A	294	 87% 7% . .

## 2 Entry composition [i](#)

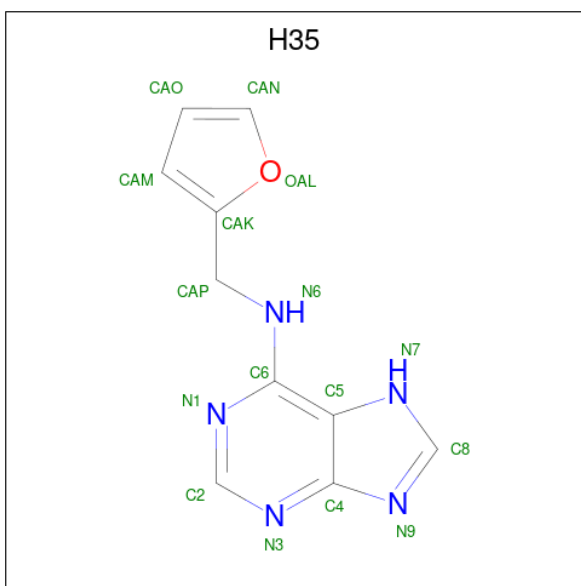
There are 3 unique types of molecules in this entry. The entry contains 2387 atoms, of which 0 are hydrogens and 0 are deuteriums.

In the tables below, the ZeroOcc column contains the number of atoms modelled with zero occupancy, the AltConf column contains the number of residues with at least one atom in alternate conformation and the Trace column contains the number of residues modelled with at most 2 atoms.

- Molecule 1 is a protein called ENDOCHITINASE.

Mol	Chain	Residues	Atoms					ZeroOcc	AltConf	Trace
			Total	C	N	O	S			
1	A	286	2179	1380	335	458	6	0	6	1

- Molecule 2 is N-(FURAN-2-YLMETHYL)-7H-PURIN-6-AMINE (three-letter code: H35) (formula: C<sub>10</sub>H<sub>9</sub>N<sub>5</sub>O).



Mol	Chain	Residues	Atoms				ZeroOcc	AltConf
			Total	C	N	O		
2	A	1	16	10	5	1	0	0


- Molecule 3 is water.

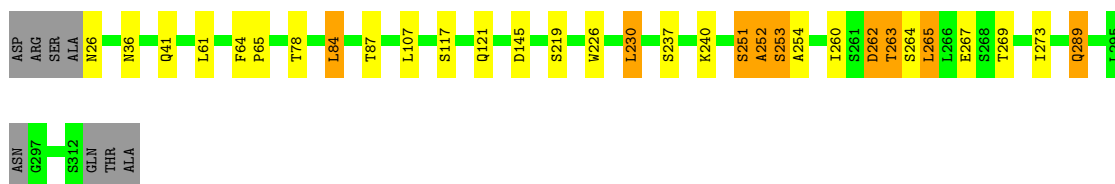
Mol	Chain	Residues	Atoms		ZeroOcc	AltConf
3	A	192	Total	O	0	0
			192	192		

### 3 Residue-property plots [i](#)

These plots are drawn for all protein, RNA, DNA and oligosaccharide chains in the entry. The first graphic for a chain summarises the proportions of the various outlier classes displayed in the second graphic. The second graphic shows the sequence view annotated by issues in geometry. Residues are color-coded according to the number of geometric quality criteria for which they contain at least one outlier: green = 0, yellow = 1, orange = 2 and red = 3 or more. Stretches of 2 or more consecutive residues without any outlier are shown as a green connector. Residues present in the sample, but not in the model, are shown in grey.

- Molecule 1: ENDOCHITINASE

Chain A:  87% 7% . .



## 4 Data and refinement statistics

Property	Value	Source
Space group	P 21 21 2	Depositor
Cell constants a, b, c, $\alpha$ , $\beta$ , $\gamma$	73.35Å 111.62Å 37.27Å 90.00° 90.00° 90.00°	Depositor
Resolution (Å)	20.00 – 1.60 19.20 – 1.60	Depositor EDS
% Data completeness (in resolution range)	96.8 (20.00-1.60) 96.8 (19.20-1.60)	Depositor EDS
$R_{merge}$	0.08	Depositor
$R_{sym}$	(Not available)	Depositor
$\langle I/\sigma(I) \rangle$ <sup>1</sup>	2.25 (at 1.60Å)	Xtrriage
Refinement program	REFMAC 5.2.0019	Depositor
R, $R_{free}$	0.193 , 0.222 0.217 , 0.247	Depositor DCC
$R_{free}$ test set	825 reflections (2.07%)	wwPDB-VP
Wilson B-factor (Å <sup>2</sup> )	21.4	Xtrriage
Anisotropy	0.083	Xtrriage
Bulk solvent $k_{sol}$ (e/Å <sup>3</sup> ), $B_{sol}$ (Å <sup>2</sup> )	0.38 , 45.0	EDS
L-test for twinning <sup>2</sup>	$\langle  L  \rangle = 0.48$ , $\langle L^2 \rangle = 0.31$	Xtrriage
Estimated twinning fraction	No twinning to report.	Xtrriage
$F_o, F_c$ correlation	0.94	EDS
Total number of atoms	2387	wwPDB-VP
Average B, all atoms (Å <sup>2</sup> )	27.0	wwPDB-VP

Xtrriage's analysis on translational NCS is as follows: *The largest off-origin peak in the Patterson function is 5.78% of the height of the origin peak. No significant pseudotranslation is detected.*

<sup>1</sup>Intensities estimated from amplitudes.

<sup>2</sup>Theoretical values of  $\langle |L| \rangle$ ,  $\langle L^2 \rangle$  for acentric reflections are 0.5, 0.333 respectively for untwinned datasets, and 0.375, 0.2 for perfectly twinned datasets.

## 5 Model quality [i](#)

### 5.1 Standard geometry [i](#)

Bond lengths and bond angles in the following residue types are not validated in this section: H35

The Z score for a bond length (or angle) is the number of standard deviations the observed value is removed from the expected value. A bond length (or angle) with  $|Z| > 5$  is considered an outlier worth inspection. RMSZ is the root-mean-square of all Z scores of the bond lengths (or angles).

Mol	Chain	Bond lengths		Bond angles	
		RMSZ	# Z  >5	RMSZ	# Z  >5
1	A	0.78	1/2245 (0.0%)	0.75	1/3057 (0.0%)

Chiral center outliers are detected by calculating the chiral volume of a chiral center and verifying if the center is modelled as a planar moiety or with the opposite hand. A planarity outlier is detected by checking planarity of atoms in a peptide group, atoms in a mainchain group or atoms of a sidechain that are expected to be planar.

Mol	Chain	#Chirality outliers	#Planarity outliers
1	A	0	4

All (1) bond length outliers are listed below:

Mol	Chain	Res	Type	Atoms	Z	Observed(Å)	Ideal(Å)
1	A	254	ALA	CA-CB	-5.65	1.40	1.52

All (1) bond angle outliers are listed below:

Mol	Chain	Res	Type	Atoms	Z	Observed(°)	Ideal(°)
1	A	253	SER	N-CA-CB	5.19	118.29	110.50

There are no chirality outliers.

All (4) planarity outliers are listed below:

Mol	Chain	Res	Type	Group
1	A	251	SER	Peptide
1	A	252	ALA	Peptide
1	A	260	ILE	Mainchain
1	A	263	THR	Peptide

## 5.2 Too-close contacts

In the following table, the Non-H and H(model) columns list the number of non-hydrogen atoms and hydrogen atoms in the chain respectively. The H(added) column lists the number of hydrogen atoms added and optimized by MolProbity. The Clashes column lists the number of clashes within the asymmetric unit, whereas Symm-Clashes lists symmetry-related clashes.

Mol	Chain	Non-H	H(model)	H(added)	Clashes	Symm-Clashes
1	A	2179	0	2028	36	0
2	A	16	0	9	0	0
3	A	192	0	0	0	0
All	All	2387	0	2037	36	0

The all-atom clashscore is defined as the number of clashes found per 1000 atoms (including hydrogen atoms). The all-atom clashscore for this structure is 9.

All (36) close contacts within the same asymmetric unit are listed below, sorted by their clash magnitude.

Atom-1	Atom-2	Interatomic distance (Å)	Clash overlap (Å)
1:A:262:ASP:C	1:A:264:SER:HB3	1.49	1.29
1:A:262:ASP:HB3	1:A:264:SER:OG	1.34	1.26
1:A:262:ASP:HB3	1:A:264:SER:CB	1.65	1.25
1:A:265:LEU:H	1:A:265:LEU:HD12	0.95	1.05
1:A:262:ASP:C	1:A:264:SER:CB	2.29	0.99
1:A:262:ASP:CB	1:A:264:SER:CB	2.43	0.95
1:A:265:LEU:HD12	1:A:265:LEU:N	1.74	0.94
1:A:262:ASP:CA	1:A:264:SER:HB3	1.98	0.94
1:A:262:ASP:HB2	1:A:265:LEU:HD11	1.49	0.93
1:A:262:ASP:CB	1:A:264:SER:HB3	2.00	0.92
1:A:262:ASP:HB3	1:A:264:SER:HB3	1.51	0.88
1:A:262:ASP:O	1:A:264:SER:HB3	1.79	0.81
1:A:262:ASP:HB2	1:A:265:LEU:CD1	2.17	0.73
1:A:262:ASP:CA	1:A:264:SER:CB	2.64	0.69
1:A:265:LEU:H	1:A:265:LEU:CD1	1.79	0.65
1:A:263:THR:N	1:A:264:SER:CB	2.63	0.62
1:A:251:SER:OG	1:A:253:SER:HB3	2.04	0.56
1:A:265:LEU:N	1:A:265:LEU:CD1	2.52	0.53
1:A:117:SER:H	1:A:121:GLN:NE2	2.11	0.48
1:A:226:TRP:NE1	1:A:230:LEU:HD23	2.28	0.48
1:A:263:THR:O	1:A:267:GLU:HB2	2.14	0.46
1:A:265:LEU:O	1:A:269:THR:N	2.40	0.46
1:A:36:ASN:H	1:A:41:GLN:NE2	2.13	0.46
1:A:237:SER:O	1:A:240:LYS:HD3	2.16	0.46

*Continued on next page...*

Continued from previous page...

Atom-1	Atom-2	Interatomic distance (Å)	Clash overlap (Å)
1:A:262:ASP:CB	1:A:264:SER:OG	2.29	0.46
1:A:262:ASP:CB	1:A:265:LEU:CD1	2.91	0.46
1:A:262:ASP:CB	1:A:265:LEU:HD11	2.34	0.44
1:A:251:SER:OG	1:A:252:ALA:N	2.46	0.43
1:A:263:THR:N	1:A:264:SER:HB2	2.33	0.42
1:A:78:THR:HG22	1:A:84:LEU:HD12	2.01	0.42
1:A:269:THR:O	1:A:273:ILE:HG12	2.20	0.42
1:A:61:LEU:HD23	1:A:107:LEU:HG	2.02	0.41
1:A:64:PHE:HB2	1:A:65:PRO:HA	2.01	0.41
1:A:251:SER:OG	1:A:289:GLN:NE2	2.53	0.41
1:A:87:THR:HG22	1:A:145:ASP:OD2	2.22	0.40
1:A:252:ALA:N	1:A:253:SER:HB3	2.36	0.40

There are no symmetry-related clashes.

## 5.3 Torsion angles [i](#)

### 5.3.1 Protein backbone [i](#)

In the following table, the Percentiles column shows the percent Ramachandran outliers of the chain as a percentile score with respect to all X-ray entries followed by that with respect to entries of similar resolution.

The Analysed column shows the number of residues for which the backbone conformation was analysed, and the total number of residues.

Mol	Chain	Analysed	Favoured	Allowed	Outliers	Percentiles
1	A	288/294 (98%)	273 (95%)	14 (5%)	1 (0%)	41 21

All (1) Ramachandran outliers are listed below:

Mol	Chain	Res	Type
1	A	219	SER

### 5.3.2 Protein sidechains [i](#)

In the following table, the Percentiles column shows the percent sidechain outliers of the chain as a percentile score with respect to all X-ray entries followed by that with respect to entries of similar resolution.

The Analysed column shows the number of residues for which the sidechain conformation was



analysed, and the total number of residues.

Mol	Chain	Analysed	Rotameric	Outliers	Percentiles
1	A	238/239 (100%)	232 (98%)	6 (2%)	47 22

All (6) residues with a non-rotameric sidechain are listed below:

Mol	Chain	Res	Type
1	A	26	ASN
1	A	84	LEU
1	A	230	LEU
1	A	262	ASP
1	A	265	LEU
1	A	289	GLN

Sometimes sidechains can be flipped to improve hydrogen bonding and reduce clashes. All (7) such sidechains are listed below:

Mol	Chain	Res	Type
1	A	28	ASN
1	A	41	GLN
1	A	63	GLN
1	A	121	GLN
1	A	159	ASN
1	A	223	GLN
1	A	289	GLN

### 5.3.3 RNA [i](#)

There are no RNA molecules in this entry.

## 5.4 Non-standard residues in protein, DNA, RNA chains [i](#)

There are no non-standard protein/DNA/RNA residues in this entry.

## 5.5 Carbohydrates [i](#)

There are no monosaccharides in this entry.

## 5.6 Ligand geometry [i](#)

1 ligand is modelled in this entry.

In the following table, the Counts columns list the number of bonds (or angles) for which Mogul statistics could be retrieved, the number of bonds (or angles) that are observed in the model and the number of bonds (or angles) that are defined in the Chemical Component Dictionary. The Link column lists molecule types, if any, to which the group is linked. The Z score for a bond length (or angle) is the number of standard deviations the observed value is removed from the expected value. A bond length (or angle) with  $|Z| > 2$  is considered an outlier worth inspection. RMSZ is the root-mean-square of all Z scores of the bond lengths (or angles).

Mol	Type	Chain	Res	Link	Bond lengths			Bond angles		
					Counts	RMSZ	# Z  > 2	Counts	RMSZ	# Z  > 2
2	H35	A	1313	-	18,18,18	1.49	5 (27%)	17,24,24	2.15	6 (35%)

In the following table, the Chirals column lists the number of chiral outliers, the number of chiral centers analysed, the number of these observed in the model and the number defined in the Chemical Component Dictionary. Similar counts are reported in the Torsion and Rings columns. '-' means no outliers of that kind were identified.

Mol	Type	Chain	Res	Link	Chirals	Torsions	Rings
2	H35	A	1313	-	-	0/5/5/5	0/3/3/3

All (5) bond length outliers are listed below:

Mol	Chain	Res	Type	Atoms	Z	Observed(Å)	Ideal(Å)
2	A	1313	H35	C5-N7	-3.47	1.33	1.38
2	A	1313	H35	C6-N1	-2.39	1.33	1.36
2	A	1313	H35	C5-C4	-2.22	1.39	1.46
2	A	1313	H35	CAP-N6	2.18	1.51	1.45
2	A	1313	H35	CAP-CAK	2.09	1.53	1.48

All (6) bond angle outliers are listed below:

Mol	Chain	Res	Type	Atoms	Z	Observed(°)	Ideal(°)
2	A	1313	H35	C2-N1-C6	4.73	121.21	111.51
2	A	1313	H35	N7-C8-N9	-3.50	109.13	112.99
2	A	1313	H35	N3-C2-N1	-3.14	122.89	128.82
2	A	1313	H35	C8-N9-C4	2.85	107.55	102.89
2	A	1313	H35	C8-N7-C5	2.65	109.05	106.61
2	A	1313	H35	CAK-CAP-N6	-2.62	106.59	112.90

There are no chirality outliers.

There are no torsion outliers.

There are no ring outliers.

No monomer is involved in short contacts.

## 5.7 Other polymers [i](#)

There are no such residues in this entry.

## 5.8 Polymer linkage issues [i](#)

There are no chain breaks in this entry.

## 6 Fit of model and data

### 6.1 Protein, DNA and RNA chains

Unable to reproduce the depositors R factor - this section is therefore empty.

### 6.2 Non-standard residues in protein, DNA, RNA chains

Unable to reproduce the depositors R factor - this section is therefore empty.

### 6.3 Carbohydrates

Unable to reproduce the depositors R factor - this section is therefore empty.

### 6.4 Ligands

Unable to reproduce the depositors R factor - this section is therefore empty.

### 6.5 Other polymers

Unable to reproduce the depositors R factor - this section is therefore empty.