



wwPDB X-ray Structure Validation Summary Report

Oct 5, 2023 – 04:07 AM EDT

PDB ID : 6UPA
Title : Crystal Structure of GTPase Domain of Human Septin 2/Septin 6 Heterocomplex
Authors : Rosa, H.V.D.; Brandao-Neto, J.; Martins, C.; Araujo, A.P.U.; Pereira, H.M.; Garratt, R.C.
Deposited on : 2019-10-17
Resolution : 2.51 Å(reported)

This is a wwPDB X-ray Structure Validation Summary Report for a publicly released PDB entry.

We welcome your comments at validation@mail.wwpdb.org

A user guide is available at

<https://www.wwpdb.org/validation/2017/XrayValidationReportHelp>

with specific help available everywhere you see the  symbol.

The types of validation reports are described at

<http://www.wwpdb.org/validation/2017/FAQs#types>.

The following versions of software and data (see [references](#) ) were used in the production of this report:

MolProbity : **FAILED**
Mogul : 1.8.5 (274361), CSD as541be (2020)
Xtriage (Phenix) : 1.13
EDS : **FAILED**
buster-report : 1.1.7 (2018)
Percentile statistics : 20191225.v01 (using entries in the PDB archive December 25th 2019)
Ideal geometry (proteins) : Engh & Huber (2001)
Ideal geometry (DNA, RNA) : Parkinson et al. (1996)
Validation Pipeline (wwPDB-VP) : 2.35.1

1 Overall quality at a glance

The following experimental techniques were used to determine the structure:

X-RAY DIFFRACTION

The reported resolution of this entry is 2.51 Å.

There are no overall percentile quality scores available for this entry.

MolProbity and EDS failed to run properly - the sequence quality summary graphics cannot be shown.

2 Entry composition [i](#)

There are 6 unique types of molecules in this entry. The entry contains 4056 atoms, of which 0 are hydrogens and 0 are deuteriums.

In the tables below, the ZeroOcc column contains the number of atoms modelled with zero occupancy, the AltConf column contains the number of residues with at least one atom in alternate conformation and the Trace column contains the number of residues modelled with at most 2 atoms.

- Molecule 1 is a protein called Septin-6.

Mol	Chain	Residues	Atoms					ZeroOcc	AltConf	Trace
			Total	C	N	O	S			
1	B	258	2017	1289	339	377	12	0	0	0

There are 14 discrepancies between the modelled and reference sequences:

Chain	Residue	Modelled	Actual	Comment	Reference
B	26	MET	-	initiating methionine	UNP Q14141
B	27	GLY	-	expression tag	UNP Q14141
B	28	SER	-	expression tag	UNP Q14141
B	29	SER	-	expression tag	UNP Q14141
B	30	HIS	-	expression tag	UNP Q14141
B	31	HIS	-	expression tag	UNP Q14141
B	32	HIS	-	expression tag	UNP Q14141
B	33	HIS	-	expression tag	UNP Q14141
B	34	HIS	-	expression tag	UNP Q14141
B	35	HIS	-	expression tag	UNP Q14141
B	36	SER	-	expression tag	UNP Q14141
B	37	GLN	-	expression tag	UNP Q14141
B	38	ASP	-	expression tag	UNP Q14141
B	39	PRO	-	expression tag	UNP Q14141

- Molecule 2 is a protein called Septin-2.

Mol	Chain	Residues	Atoms					ZeroOcc	AltConf	Trace
			Total	C	N	O	S			
2	A	250	1946	1247	337	352	10	0	2	0

There are 25 discrepancies between the modelled and reference sequences:

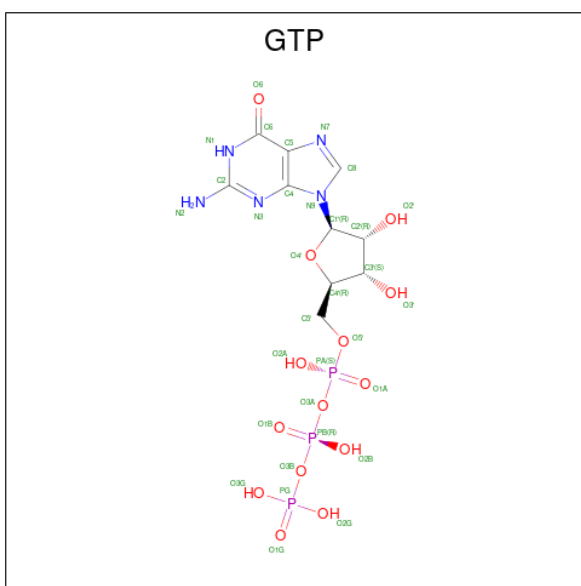
Chain	Residue	Modelled	Actual	Comment	Reference
A	34	MET	-	initiating methionine	UNP Q15019
A	309	LEU	-	expression tag	UNP Q15019

Continued on next page...

Continued from previous page...

Chain	Residue	Modelled	Actual	Comment	Reference
A	310	GLU	-	expression tag	UNP Q15019
A	311	SER	-	expression tag	UNP Q15019
A	312	GLY	-	expression tag	UNP Q15019
A	313	LYS	-	expression tag	UNP Q15019
A	314	GLU	-	expression tag	UNP Q15019
A	315	THR	-	expression tag	UNP Q15019
A	316	ALA	-	expression tag	UNP Q15019
A	317	ALA	-	expression tag	UNP Q15019
A	318	ALA	-	expression tag	UNP Q15019
A	319	LYS	-	expression tag	UNP Q15019
A	320	PHE	-	expression tag	UNP Q15019
A	321	GLU	-	expression tag	UNP Q15019
A	322	ARG	-	expression tag	UNP Q15019
A	323	ASN	-	expression tag	UNP Q15019
A	324	HIS	-	expression tag	UNP Q15019
A	325	MET	-	expression tag	UNP Q15019
A	326	ASP	-	expression tag	UNP Q15019
A	327	SER	-	expression tag	UNP Q15019
A	328	SER	-	expression tag	UNP Q15019
A	329	THR	-	expression tag	UNP Q15019
A	330	SER	-	expression tag	UNP Q15019
A	331	ALA	-	expression tag	UNP Q15019
A	332	ALA	-	expression tag	UNP Q15019

- Molecule 3 is GUANOSINE-5'-TRIPHOSPHATE (three-letter code: GTP) (formula: $C_{10}H_{16}N_5O_{14}P_3$) (labeled as "Ligand of Interest" by depositor).

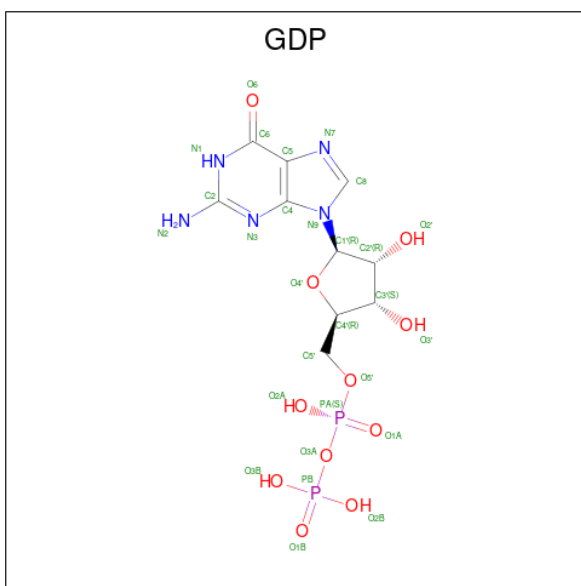


Mol	Chain	Residues	Atoms					ZeroOcc	AltConf
			Total	C	N	O	P		
3	B	1	32	10	5	14	3	0	0

- Molecule 4 is MAGNESIUM ION (three-letter code: MG) (formula: Mg) (labeled as "Ligand of Interest" by depositor).

Mol	Chain	Residues	Atoms		ZeroOcc	AltConf
			Total	Mg		
4	B	1	1	1	0	0

- Molecule 5 is GUANOSINE-5'-DIPHOSPHATE (three-letter code: GDP) (formula: C₁₀H₁₅N₅O₁₁P₂) (labeled as "Ligand of Interest" by depositor).



Mol	Chain	Residues	Atoms					ZeroOcc	AltConf
			Total	C	N	O	P		
5	A	1	28	10	5	11	2	0	0

- Molecule 6 is water.

Mol	Chain	Residues	Atoms		ZeroOcc	AltConf
			Total	O		
6	B	17	17	17	0	0
6	A	15	15	15	0	0

MolProbity and EDS failed to run properly - this section is therefore empty.

3 Data and refinement statistics

EDS failed to run properly - this section is therefore incomplete.

Property	Value	Source
Space group	P 41 21 2	Depositor
Cell constants a, b, c, α , β , γ	82.73Å 82.73Å 170.35Å 90.00° 90.00° 90.00°	Depositor
Resolution (Å)	37.21 – 2.51	Depositor
% Data completeness (in resolution range)	99.9 (37.21-2.51)	Depositor
R_{merge}	0.15	Depositor
R_{sym}	(Not available)	Depositor
$\langle I/\sigma(I) \rangle$ ¹	1.42 (at 2.51Å)	Xtrriage
Refinement program	PHENIX 1.16_3549	Depositor
R, R_{free}	0.224 , 0.266	Depositor
Wilson B-factor (Å ²)	63.0	Xtrriage
Anisotropy	0.184	Xtrriage
L-test for twinning ²	$\langle L \rangle = 0.49$, $\langle L^2 \rangle = 0.32$	Xtrriage
Estimated twinning fraction	No twinning to report.	Xtrriage
Total number of atoms	4056	wwPDB-VP
Average B, all atoms (Å ²)	71.0	wwPDB-VP

Xtrriage's analysis on translational NCS is as follows: *The largest off-origin peak in the Patterson function is 6.70% of the height of the origin peak. No significant pseudotranslation is detected.*

¹Intensities estimated from amplitudes.

²Theoretical values of $\langle |L| \rangle$, $\langle L^2 \rangle$ for acentric reflections are 0.5, 0.333 respectively for untwinned datasets, and 0.375, 0.2 for perfectly twinned datasets.

4 Model quality [i](#)

4.1 Standard geometry [i](#)

MolProbity failed to run properly - this section is therefore empty.

4.2 Too-close contacts [i](#)

MolProbity failed to run properly - this section is therefore empty.

4.3 Torsion angles [i](#)

4.3.1 Protein backbone [i](#)

MolProbity failed to run properly - this section is therefore empty.

4.3.2 Protein sidechains [i](#)

MolProbity failed to run properly - this section is therefore empty.

4.3.3 RNA [i](#)

MolProbity failed to run properly - this section is therefore empty.

4.4 Non-standard residues in protein, DNA, RNA chains [i](#)

There are no non-standard protein/DNA/RNA residues in this entry.

4.5 Carbohydrates [i](#)

There are no monosaccharides in this entry.

4.6 Ligand geometry [i](#)

Of 3 ligands modelled in this entry, 1 is monoatomic - leaving 2 for Mogul analysis.

In the following table, the Counts columns list the number of bonds (or angles) for which Mogul statistics could be retrieved, the number of bonds (or angles) that are observed in the model and the number of bonds (or angles) that are defined in the Chemical Component Dictionary. The Link column lists molecule types, if any, to which the group is linked. The Z score for a bond

length (or angle) is the number of standard deviations the observed value is removed from the expected value. A bond length (or angle) with $|Z| > 2$ is considered an outlier worth inspection. RMSZ is the root-mean-square of all Z scores of the bond lengths (or angles).

Mol	Type	Chain	Res	Link	Bond lengths			Bond angles		
					Counts	RMSZ	# Z > 2	Counts	RMSZ	# Z > 2
5	GDP	A	1401	-	24,30,30	0.94	1 (4%)	30,47,47	1.21	3 (10%)
3	GTP	B	401	4	26,34,34	1.14	2 (7%)	32,54,54	1.54	7 (21%)

In the following table, the Chirals column lists the number of chiral outliers, the number of chiral centers analysed, the number of these observed in the model and the number defined in the Chemical Component Dictionary. Similar counts are reported in the Torsion and Rings columns. '-' means no outliers of that kind were identified.

Mol	Type	Chain	Res	Link	Chirals	Torsions	Rings
5	GDP	A	1401	-	-	6/12/32/32	0/3/3/3
3	GTP	B	401	4	-	4/18/38/38	0/3/3/3

All (3) bond length outliers are listed below:

Mol	Chain	Res	Type	Atoms	Z	Observed(Å)	Ideal(Å)
3	B	401	GTP	C5-C6	-4.02	1.39	1.47
5	A	1401	GDP	C6-N1	-2.35	1.34	1.37
3	B	401	GTP	C2-N3	2.20	1.38	1.33

The worst 5 of 10 bond angle outliers are listed below:

Mol	Chain	Res	Type	Atoms	Z	Observed(°)	Ideal(°)
3	B	401	GTP	PB-O3B-PG	-3.31	121.45	132.83
3	B	401	GTP	C5-C6-N1	3.17	119.54	113.95
3	B	401	GTP	C8-N7-C5	2.96	108.63	102.99
3	B	401	GTP	PA-O3A-PB	-2.93	122.77	132.83
3	B	401	GTP	C3'-C2'-C1'	2.90	105.35	100.98

There are no chirality outliers.

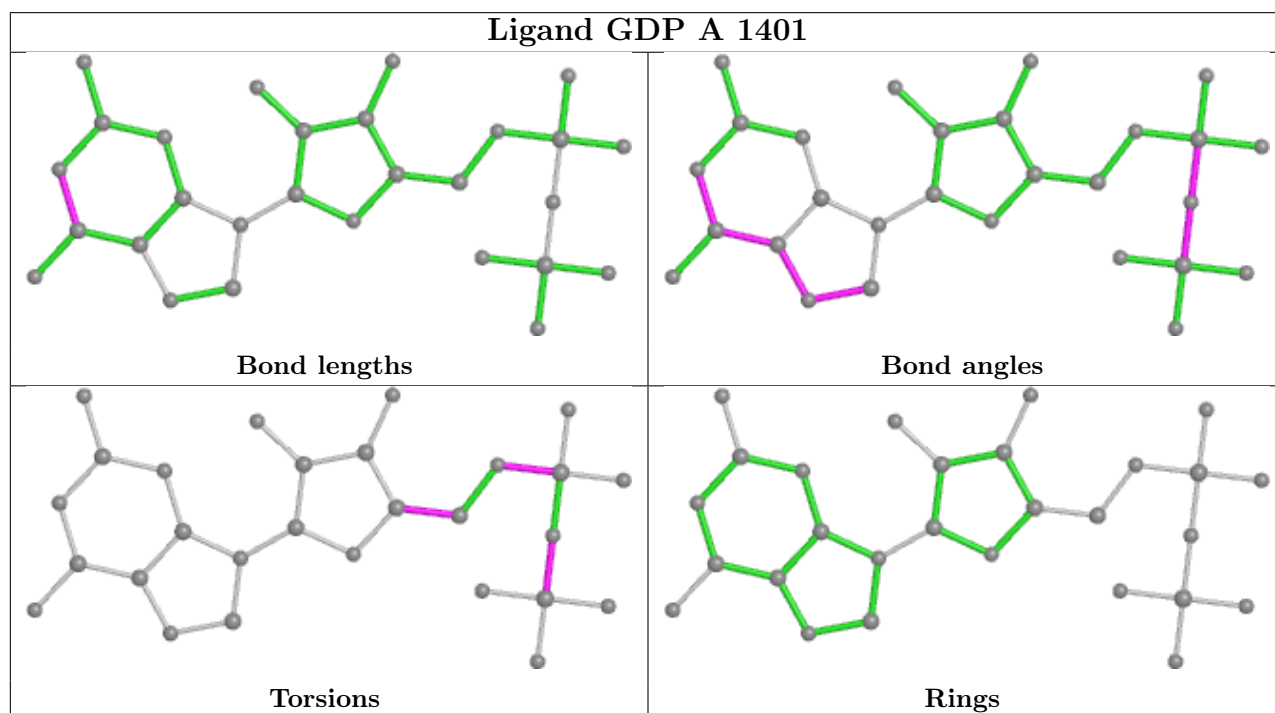
5 of 10 torsion outliers are listed below:

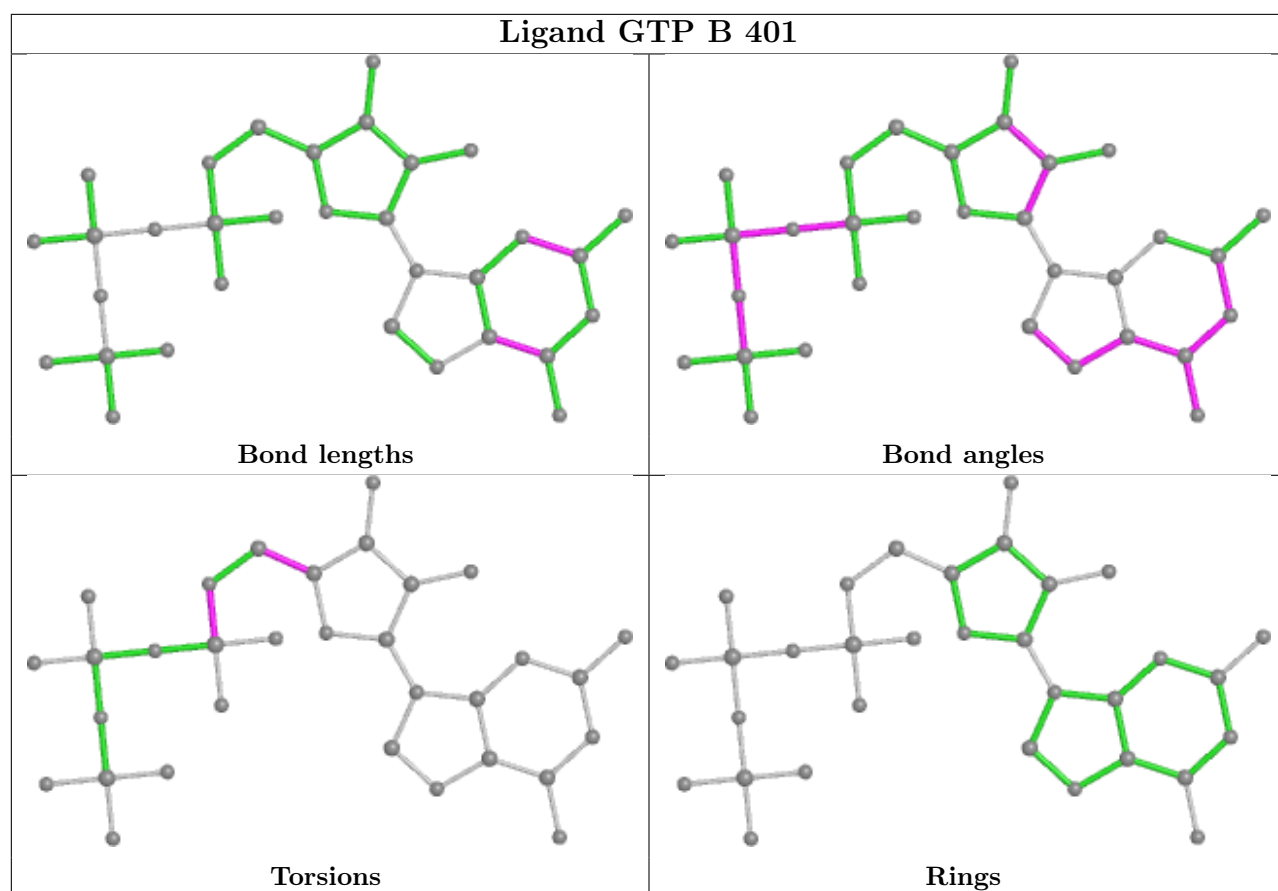
Mol	Chain	Res	Type	Atoms
3	B	401	GTP	C5'-O5'-PA-O1A
5	A	1401	GDP	PA-O3A-PB-O2B
5	A	1401	GDP	PA-O3A-PB-O3B
3	B	401	GTP	C3'-C4'-C5'-O5'
3	B	401	GTP	O4'-C4'-C5'-O5'

There are no ring outliers.

No monomer is involved in short contacts.

The following is a two-dimensional graphical depiction of Mogul quality analysis of bond lengths, bond angles, torsion angles, and ring geometry for all instances of the Ligand of Interest. In addition, ligands with molecular weight > 250 and outliers as shown on the validation Tables will also be included. For torsion angles, if less than 5% of the Mogul distribution of torsion angles is within 10 degrees of the torsion angle in question, then that torsion angle is considered an outlier. Any bond that is central to one or more torsion angles identified as an outlier by Mogul will be highlighted in the graph. For rings, the root-mean-square deviation (RMSD) between the ring in question and similar rings identified by Mogul is calculated over all ring torsion angles. If the average RMSD is greater than 60 degrees and the minimal RMSD between the ring in question and any Mogul-identified rings is also greater than 60 degrees, then that ring is considered an outlier. The outliers are highlighted in purple. The color gray indicates Mogul did not find sufficient equivalents in the CSD to analyse the geometry.





4.7 Other polymers [i](#)

There are no such residues in this entry.

4.8 Polymer linkage issues [i](#)

There are no chain breaks in this entry.

5 Fit of model and data [i](#)

5.1 Protein, DNA and RNA chains [i](#)

EDS failed to run properly - this section is therefore empty.

5.2 Non-standard residues in protein, DNA, RNA chains [i](#)

EDS failed to run properly - this section is therefore empty.

5.3 Carbohydrates [i](#)

EDS failed to run properly - this section is therefore empty.

5.4 Ligands [i](#)

EDS failed to run properly - this section is therefore empty.

5.5 Other polymers [i](#)

EDS failed to run properly - this section is therefore empty.