



Full wwPDB X-ray Structure Validation Report ⓘ

Dec 10, 2022 – 02:39 PM EST

PDB ID : 3UP1
Title : Crystal structure of the unliganded human interleukin-7 receptor extracellular domain
Authors : McElroy, C.A.; Holland, P.J.; Walsh, S.T.R.
Deposited on : 2011-11-17
Resolution : 2.15 Å(reported)

This is a Full wwPDB X-ray Structure Validation Report for a publicly released PDB entry.

We welcome your comments at validation@mail.wwpdb.org

A user guide is available at

<https://www.wwpdb.org/validation/2017/XrayValidationReportHelp>

with specific help available everywhere you see the ⓘ symbol.

The types of validation reports are described at

<http://www.wwpdb.org/validation/2017/FAQs#types>.

The following versions of software and data (see [references ⓘ](#)) were used in the production of this report:

MolProbity : 4.02b-467
Mogul : 1.8.5 (274361), CSD as541be (2020)
Xtriage (Phenix) : 1.13
EDS : 2.31.2
Percentile statistics : 20191225.v01 (using entries in the PDB archive December 25th 2019)
Refmac : 5.8.0158
CCP4 : 7.0.044 (Gargrove)
Ideal geometry (proteins) : Engh & Huber (2001)
Ideal geometry (DNA, RNA) : Parkinson et al. (1996)
Validation Pipeline (wwPDB-VP) : 2.31.2

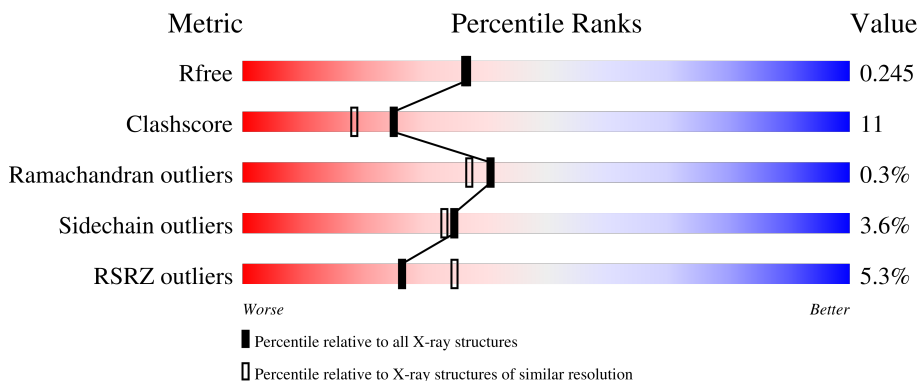
1 Overall quality at a glance

The following experimental techniques were used to determine the structure:

X-RAY DIFFRACTION

The reported resolution of this entry is 2.15 Å.

Percentile scores (ranging between 0-100) for global validation metrics of the entry are shown in the following graphic. The table shows the number of entries on which the scores are based.



Metric	Whole archive (#Entries)	Similar resolution (#Entries, resolution range(Å))
R_{free}	130704	1479 (2.16-2.16)
Clashscore	141614	1585 (2.16-2.16)
Ramachandran outliers	138981	1560 (2.16-2.16)
Sidechain outliers	138945	1559 (2.16-2.16)
RSRZ outliers	127900	1456 (2.16-2.16)

The table below summarises the geometric issues observed across the polymeric chains and their fit to the electron density. The red, orange, yellow and green segments of the lower bar indicate the fraction of residues that contain outliers for ≥ 3 , 2, 1 and 0 types of geometric quality criteria respectively. A grey segment represents the fraction of residues that are not modelled. The numeric value for each fraction is indicated below the corresponding segment, with a dot representing fractions $\leq 5\%$. The upper red bar (where present) indicates the fraction of residues that have poor fit to the electron density. The numeric value is given above the bar.

Mol	Chain	Length	Quality of chain
1	A	223	 4% 76% 12% 10%
1	B	223	 5% 74% 14% 12%
2	C	2	 50% 50%
2	D	2	 100%

The following table lists non-polymeric compounds, carbohydrate monomers and non-standard

residues in protein, DNA, RNA chains that are outliers for geometric or electron-density-fit criteria:

Mol	Type	Chain	Res	Chirality	Geometry	Clashes	Electron density
2	NAG	C	2	-	-	-	X
2	NAG	D	1	-	-	X	-
2	NAG	D	2	-	-	-	X
3	FUC	B	303	-	-	-	X
6	NGA	B	304	-	-	X	X

2 Entry composition [i](#)

There are 7 unique types of molecules in this entry. The entry contains 3517 atoms, of which 0 are hydrogens and 0 are deuteriums.

In the tables below, the ZeroOcc column contains the number of atoms modelled with zero occupancy, the AltConf column contains the number of residues with at least one atom in alternate conformation and the Trace column contains the number of residues modelled with at most 2 atoms.

- Molecule 1 is a protein called Interleukin-7 receptor subunit alpha.

Mol	Chain	Residues	Atoms					ZeroOcc	AltConf	Trace
			Total	C	N	O	S			
1	A	201	Total	C	N	O	S	0	2	0
			1649	1063	267	310	9			
1	B	196	Total	C	N	O	S	0	1	0
			1594	1034	260	292	8			

There are 10 discrepancies between the modelled and reference sequences:

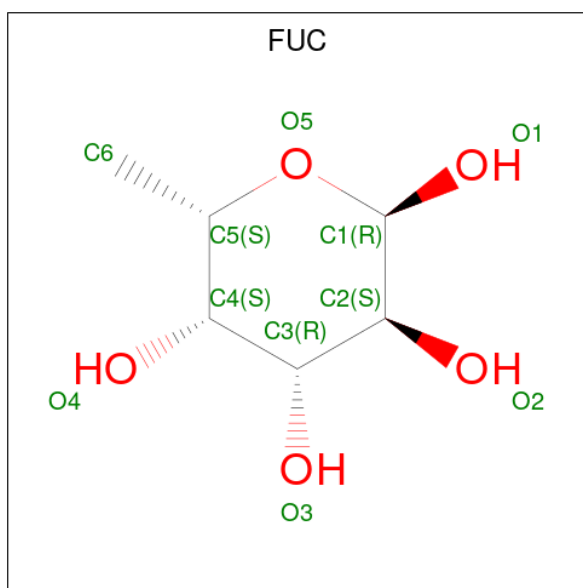
Chain	Residue	Modelled	Actual	Comment	Reference
A	-3	GLY	-	expression tag	UNP P16871
A	-2	SER	-	expression tag	UNP P16871
A	-1	HIS	-	expression tag	UNP P16871
A	0	MET	-	expression tag	UNP P16871
A	118	VAL	ILE	variant	UNP P16871
B	-3	GLY	-	expression tag	UNP P16871
B	-2	SER	-	expression tag	UNP P16871
B	-1	HIS	-	expression tag	UNP P16871
B	0	MET	-	expression tag	UNP P16871
B	118	VAL	ILE	variant	UNP P16871

- Molecule 2 is an oligosaccharide called 2-acetamido-2-deoxy-beta-D-glucopyranose-(1-4)-2-acetamido-2-deoxy-beta-D-glucopyranose.



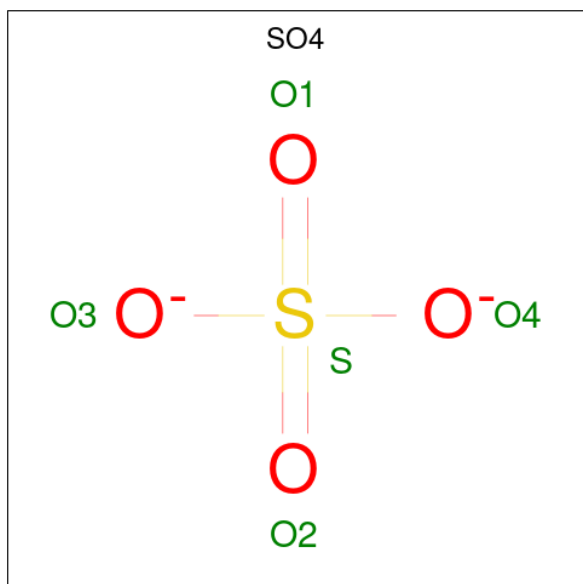
Mol	Chain	Residues	Atoms				ZeroOcc	AltConf	Trace
			Total	C	N	O			
2	C	2	Total	C	N	O	0	0	0
			28	16	2	10			
2	D	2	Total	C	N	O	0	0	0
			28	16	2	10			

- Molecule 3 is alpha-L-fucopyranose (three-letter code: FUC) (formula: $C_6H_{12}O_5$).



Mol	Chain	Residues	Atoms	ZeroOcc	AltConf		
3	A	1	Total	C	O	0	0
			10	6	4		
3	B	1	Total	C	O	0	0
			10	6	4		

- Molecule 4 is SULFATE ION (three-letter code: SO4) (formula: O_4S).



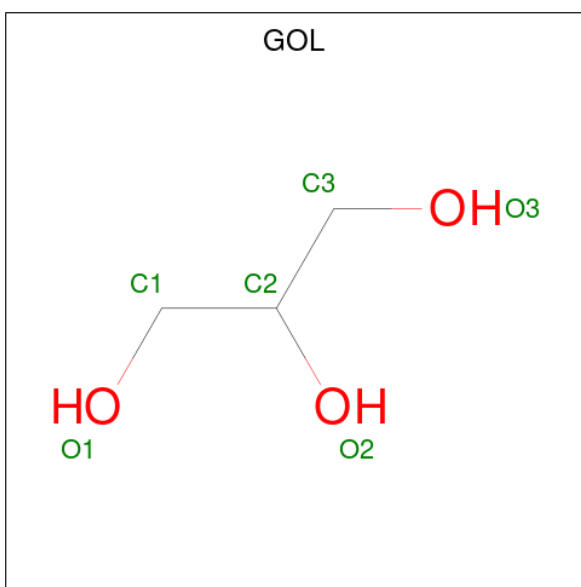
Mol	Chain	Residues	Atoms	ZeroOcc	AltConf		
4	A	1	Total	O	S	0	0
			5	4	1		

Continued on next page...

Continued from previous page...

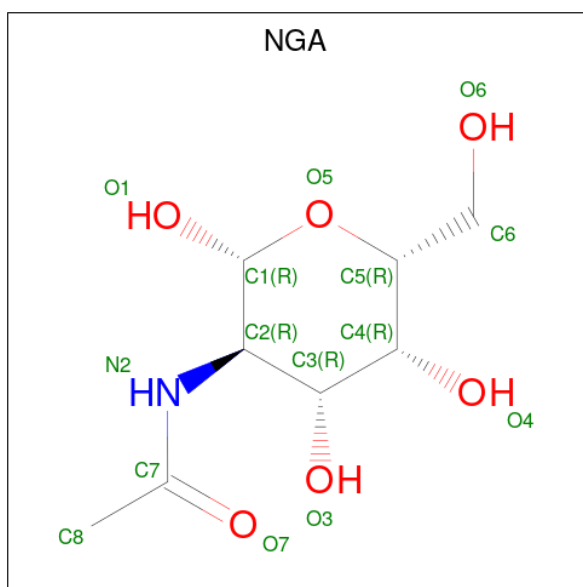
Mol	Chain	Residues	Atoms	ZeroOcc	AltConf
4	A	1	Total O S 5 4 1	0	0
4	B	1	Total O S 5 4 1	0	0
4	B	1	Total O S 5 4 1	0	0
4	B	1	Total O S 5 4 1	0	0

- Molecule 5 is GLYCEROL (three-letter code: GOL) (formula: C₃H₈O₃).



Mol	Chain	Residues	Atoms	ZeroOcc	AltConf
5	A	1	Total C O 6 3 3	0	0
5	B	1	Total C O 6 3 3	0	0
5	B	1	Total C O 6 3 3	0	0
5	B	1	Total C O 6 3 3	0	0

- Molecule 6 is 2-acetamido-2-deoxy-beta-D-galactopyranose (three-letter code: NGA) (formula: C₈H₁₅NO₆).



Mol	Chain	Residues	Atoms				ZeroOcc	AltConf
			Total	C	N	O		
6	B	1	14	8	1	5	0	0

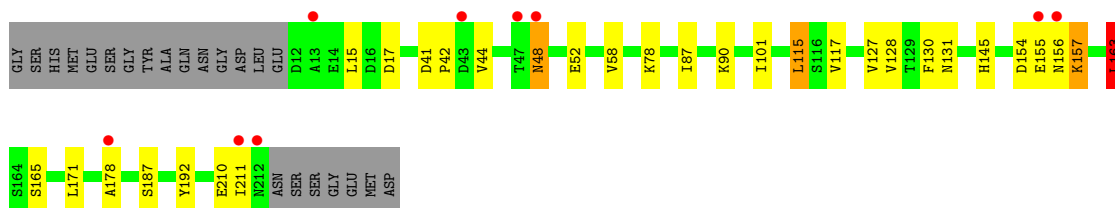
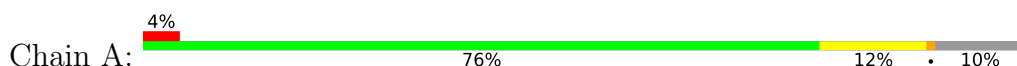
- Molecule 7 is water.

Mol	Chain	Residues	Atoms		ZeroOcc	AltConf
7	A	73	Total	O	0	0
			73	73		
7	B	62	Total	O	0	0
			62	62		

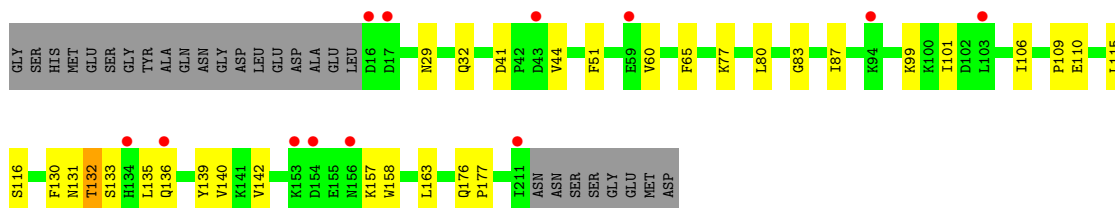
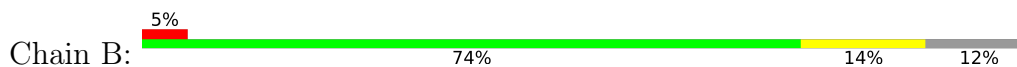
3 Residue-property plots [i](#)

These plots are drawn for all protein, RNA, DNA and oligosaccharide chains in the entry. The first graphic for a chain summarises the proportions of the various outlier classes displayed in the second graphic. The second graphic shows the sequence view annotated by issues in geometry and electron density. Residues are color-coded according to the number of geometric quality criteria for which they contain at least one outlier: green = 0, yellow = 1, orange = 2 and red = 3 or more. A red dot above a residue indicates a poor fit to the electron density ($RSRZ > 2$). Stretches of 2 or more consecutive residues without any outlier are shown as a green connector. Residues present in the sample, but not in the model, are shown in grey.

- Molecule 1: Interleukin-7 receptor subunit alpha



- Molecule 1: Interleukin-7 receptor subunit alpha



- Molecule 2: 2-acetamido-2-deoxy-beta-D-glucopyranose-(1-4)-2-acetamido-2-deoxy-beta-D-glucopyranose



- Molecule 2: 2-acetamido-2-deoxy-beta-D-glucopyranose-(1-4)-2-acetamido-2-deoxy-beta-D-glucopyranose



4 Data and refinement statistics

Property	Value	Source
Space group	I 2 2 2	Depositor
Cell constants a, b, c, α , β , γ	81.42Å 101.26Å 151.99Å 90.00° 90.00° 90.00°	Depositor
Resolution (Å)	14.93 – 2.15 29.28 – 2.15	Depositor EDS
% Data completeness (in resolution range)	99.3 (14.93-2.15) 99.3 (29.28-2.15)	Depositor EDS
R_{merge}	(Not available)	Depositor
R_{sym}	(Not available)	Depositor
$\langle I/\sigma(I) \rangle$ ¹	1.36 (at 2.16Å)	Xtrriage
Refinement program	PHENIX 1.7.2_869	Depositor
R, R_{free}	0.214 , 0.257 0.200 , 0.245	Depositor DCC
R_{free} test set	2648 reflections (7.71%)	wwPDB-VP
Wilson B-factor (Å ²)	43.8	Xtrriage
Anisotropy	0.369	Xtrriage
Bulk solvent k_{sol} (e/Å ³), B_{sol} (Å ²)	0.32 , 35.4	EDS
L-test for twinning ²	$\langle L \rangle = 0.49$, $\langle L^2 \rangle = 0.33$	Xtrriage
Estimated twinning fraction	No twinning to report.	Xtrriage
F_o, F_c correlation	0.95	EDS
Total number of atoms	3517	wwPDB-VP
Average B, all atoms (Å ²)	48.0	wwPDB-VP

Xtrriage's analysis on translational NCS is as follows: *The largest off-origin peak in the Patterson function is 5.17% of the height of the origin peak. No significant pseudotranslation is detected.*

¹Intensities estimated from amplitudes.

²Theoretical values of $\langle |L| \rangle$, $\langle L^2 \rangle$ for acentric reflections are 0.5, 0.333 respectively for untwinned datasets, and 0.375, 0.2 for perfectly twinned datasets.

5 Model quality [i](#)

5.1 Standard geometry [i](#)

Bond lengths and bond angles in the following residue types are not validated in this section: SO4, FUC, NAG, GOL, NGA

The Z score for a bond length (or angle) is the number of standard deviations the observed value is removed from the expected value. A bond length (or angle) with $|Z| > 5$ is considered an outlier worth inspection. RMSZ is the root-mean-square of all Z scores of the bond lengths (or angles).

Mol	Chain	Bond lengths		Bond angles	
		RMSZ	# Z >5	RMSZ	# Z >5
1	A	0.44	0/1694	0.59	1/2293 (0.0%)
1	B	0.41	1/1636 (0.1%)	0.61	0/2214
All	All	0.43	1/3330 (0.0%)	0.60	1/4507 (0.0%)

Chiral center outliers are detected by calculating the chiral volume of a chiral center and verifying if the center is modelled as a planar moiety or with the opposite hand. A planarity outlier is detected by checking planarity of atoms in a peptide group, atoms in a mainchain group or atoms of a sidechain that are expected to be planar.

Mol	Chain	#Chirality outliers	#Planarity outliers
1	A	0	1

All (1) bond length outliers are listed below:

Mol	Chain	Res	Type	Atoms	Z	Observed(Å)	Ideal(Å)
1	B	132	THR	C-N	5.00	1.45	1.34

All (1) bond angle outliers are listed below:

Mol	Chain	Res	Type	Atoms	Z	Observed(°)	Ideal(°)
1	A	163	LEU	CA-CB-CG	5.42	127.78	115.30

There are no chirality outliers.

All (1) planarity outliers are listed below:

Mol	Chain	Res	Type	Group
1	A	156	ASN	Peptide

5.2 Too-close contacts [i](#)

In the following table, the Non-H and H(model) columns list the number of non-hydrogen atoms and hydrogen atoms in the chain respectively. The H(added) column lists the number of hydrogen atoms added and optimized by MolProbity. The Clashes column lists the number of clashes within the asymmetric unit, whereas Symm-Clashes lists symmetry-related clashes.

Mol	Chain	Non-H	H(model)	H(added)	Clashes	Symm-Clashes
1	A	1649	0	1620	21	0
1	B	1594	0	1574	47	0
2	C	28	0	25	4	0
2	D	28	0	25	7	0
3	A	10	0	10	0	0
3	B	10	0	10	1	0
4	A	10	0	0	0	0
4	B	15	0	0	0	0
5	A	6	0	8	1	0
5	B	18	0	24	0	0
6	B	14	0	13	31	0
7	A	73	0	0	1	0
7	B	62	0	0	3	0
All	All	3517	0	3309	72	0

The all-atom clashscore is defined as the number of clashes found per 1000 atoms (including hydrogen atoms). The all-atom clashscore for this structure is 11.

All (72) close contacts within the same asymmetric unit are listed below, sorted by their clash magnitude.

Atom-1	Atom-2	Interatomic distance (Å)	Clash overlap (Å)
1:B:142:VAL:CG2	6:B:304:NGA:H83	1.40	1.50
1:A:131:ASN:ND2	2:C:1:NAG:C1	1.71	1.49
1:B:131:ASN:HD21	2:D:1:NAG:C1	1.25	1.47
1:B:142:VAL:CG2	6:B:304:NGA:C8	2.09	1.29
1:B:131:ASN:ND2	2:D:1:NAG:C1	1.95	1.26
1:B:110:GLU:HB2	6:B:304:NGA:C6	1.75	1.17
1:B:142:VAL:HG22	6:B:304:NGA:C8	1.73	1.15
1:B:110:GLU:CB	6:B:304:NGA:H62	1.81	1.10
1:B:142:VAL:HG22	6:B:304:NGA:H83	1.27	1.09
1:B:110:GLU:HB2	6:B:304:NGA:O6	1.53	1.08
1:B:142:VAL:HG21	6:B:304:NGA:C8	1.87	1.02
1:B:136:GLN:HA	6:B:304:NGA:H82	1.39	1.01
1:B:142:VAL:HG23	6:B:304:NGA:H83	1.47	0.93
1:B:110:GLU:HB2	6:B:304:NGA:H62	1.44	0.90

Continued on next page...

Continued from previous page...

Atom-1	Atom-2	Interatomic distance (Å)	Clash overlap (Å)
1:B:110:GLU:CG	6:B:304:NGA:H62	2.03	0.88
6:B:304:NGA:H61	7:B:438:HOH:O	1.78	0.83
1:B:110:GLU:HB2	6:B:304:NGA:HO6	1.39	0.82
1:B:142:VAL:CG2	6:B:304:NGA:H81	2.07	0.81
1:B:142:VAL:HG21	6:B:304:NGA:H81	1.61	0.81
1:B:131:ASN:HD21	2:D:1:NAG:C2	1.93	0.81
1:B:131:ASN:CG	2:D:1:NAG:C1	2.49	0.80
1:B:110:GLU:H	6:B:304:NGA:H62	1.47	0.80
1:A:131:ASN:CG	2:C:1:NAG:C1	2.48	0.80
1:A:87:ILE:HD12	1:A:101:ILE:HD12	1.68	0.76
1:B:110:GLU:HG3	6:B:304:NGA:H62	1.66	0.76
3:B:303:FUC:C1	2:D:1:NAG:H61	2.20	0.72
1:B:142:VAL:HG21	6:B:304:NGA:H83	1.50	0.71
1:B:110:GLU:CB	6:B:304:NGA:C6	2.49	0.70
1:A:178:ALA:HB2	1:A:210:GLU:HG3	1.73	0.68
6:B:304:NGA:O4	7:B:438:HOH:O	2.11	0.68
1:B:110:GLU:N	6:B:304:NGA:H62	2.09	0.66
1:B:131:ASN:OD1	2:D:1:NAG:C1	2.44	0.66
1:B:109:PRO:HA	6:B:304:NGA:H4	1.79	0.65
1:B:132:THR:HG22	1:B:133:SER:N	2.13	0.63
1:B:110:GLU:H	6:B:304:NGA:C6	2.12	0.61
1:A:48:ASN:OD1	1:A:48:ASN:N	2.35	0.60
1:B:110:GLU:CG	6:B:304:NGA:C6	2.80	0.58
1:A:131:ASN:ND2	2:C:1:NAG:C2	2.63	0.57
1:B:110:GLU:CA	6:B:304:NGA:H62	2.35	0.56
1:B:132:THR:CG2	1:B:133:SER:N	2.70	0.55
2:D:1:NAG:H62	2:D:2:NAG:H82	1.88	0.55
1:A:41:ASP:HB3	1:A:44:VAL:HG23	1.89	0.54
1:B:115:LEU:HD13	1:B:130:PHE:HB3	1.90	0.54
1:B:136:GLN:CA	6:B:304:NGA:H82	2.28	0.53
1:B:41:ASP:HB3	1:B:44:VAL:HG23	1.91	0.53
1:A:163:LEU:HD22	1:A:165:SER:O	2.10	0.52
1:A:145:HIS:HB2	1:A:163:LEU:HD13	1.92	0.51
1:B:110:GLU:H	6:B:304:NGA:C5	2.24	0.50
1:A:52:GLU:OE1	1:A:90:LYS:HE3	2.12	0.49
1:A:127:VAL:HG11	5:A:906:GOL:H2	1.93	0.49
1:B:87:ILE:HD12	1:B:101:ILE:HD12	1.96	0.47
1:A:131:ASN:OD1	2:C:1:NAG:C1	2.62	0.46
1:B:132:THR:CG2	1:B:133:SER:H	2.28	0.46
1:A:192:TYR:CD1	1:B:83:GLY:HA2	2.49	0.46
1:B:157:LYS:HD2	1:B:158:TRP:H	1.80	0.46

Continued on next page...

Continued from previous page...

Atom-1	Atom-2	Interatomic distance (Å)	Clash overlap (Å)
1:B:99:LYS:HD3	1:B:101:ILE:HD11	1.96	0.46
1:B:101:ILE:HG21	1:B:106:ILE:HD13	1.98	0.46
1:B:135:LEU:HB2	6:B:304:NGA:H2	1.98	0.45
6:B:304:NGA:O6	7:B:459:HOH:O	2.21	0.45
1:A:115:LEU:HD13	1:A:130:PHE:HB3	1.99	0.45
1:B:139:TYR:HB2	6:B:304:NGA:H81	1.99	0.45
1:A:17:ASP:O	1:A:44:VAL:HG21	2.16	0.45
1:A:115:LEU:CD1	1:A:130:PHE:HB3	2.46	0.45
1:A:58:VAL:HG22	1:A:78:LYS:HA	1.99	0.44
1:A:155:GLU:O	1:A:157:LYS:HG3	2.18	0.44
1:A:157:LYS:HB3	7:A:1057:HOH:O	2.16	0.44
1:B:29:ASN:O	1:B:32:GLN:HG2	2.18	0.43
1:B:32:GLN:HB3	1:B:77:LYS:HG3	2.02	0.42
1:A:117:VAL:HG22	1:A:128:VAL:HG22	2.02	0.41
1:B:176:GLN:HA	1:B:177:PRO:HD3	1.85	0.41
1:A:41:ASP:HA	1:A:42:PRO:HD3	1.83	0.41
1:B:51:PHE:HB3	1:B:65:PHE:CD1	2.56	0.41

There are no symmetry-related clashes.

5.3 Torsion angles [i](#)

5.3.1 Protein backbone [i](#)

In the following table, the Percentiles column shows the percent Ramachandran outliers of the chain as a percentile score with respect to all X-ray entries followed by that with respect to entries of similar resolution.

The Analysed column shows the number of residues for which the backbone conformation was analysed, and the total number of residues.

Mol	Chain	Analysed	Favoured	Allowed	Outliers	Percentiles	
1	A	201/223 (90%)	190 (94%)	10 (5%)	1 (0%)	29	22
1	B	195/223 (87%)	186 (95%)	9 (5%)	0	100	100
All	All	396/446 (89%)	376 (95%)	19 (5%)	1 (0%)	41	37

All (1) Ramachandran outliers are listed below:

Mol	Chain	Res	Type
1	A	157	LYS

5.3.2 Protein sidechains [i](#)

In the following table, the Percentiles column shows the percent sidechain outliers of the chain as a percentile score with respect to all X-ray entries followed by that with respect to entries of similar resolution.

The Analysed column shows the number of residues for which the sidechain conformation was analysed, and the total number of residues.

Mol	Chain	Analysed	Rotameric	Outliers	Percentiles	
1	A	187/204 (92%)	179 (96%)	8 (4%)	29	27
1	B	178/204 (87%)	173 (97%)	5 (3%)	43	44
All	All	365/408 (90%)	352 (96%)	13 (4%)	35	33

All (13) residues with a non-rotameric sidechain are listed below:

Mol	Chain	Res	Type
1	A	15	LEU
1	A	48	ASN
1	A	115	LEU
1	A	154	ASP
1	A	163	LEU
1	A	171	LEU
1	A	187	SER
1	A	211	ILE
1	B	60	VAL
1	B	80	LEU
1	B	116	SER
1	B	140	VAL
1	B	163	LEU

Sometimes sidechains can be flipped to improve hydrogen bonding and reduce clashes. All (1) such sidechains are listed below:

Mol	Chain	Res	Type
1	B	131	ASN

5.3.3 RNA [i](#)

There are no RNA molecules in this entry.

5.4 Non-standard residues in protein, DNA, RNA chains [i](#)

There are no non-standard protein/DNA/RNA residues in this entry.

5.5 Carbohydrates [i](#)

4 monosaccharides are modelled in this entry.

In the following table, the Counts columns list the number of bonds (or angles) for which Mogul statistics could be retrieved, the number of bonds (or angles) that are observed in the model and the number of bonds (or angles) that are defined in the Chemical Component Dictionary. The Link column lists molecule types, if any, to which the group is linked. The Z score for a bond length (or angle) is the number of standard deviations the observed value is removed from the expected value. A bond length (or angle) with $|Z| > 2$ is considered an outlier worth inspection. RMSZ is the root-mean-square of all Z scores of the bond lengths (or angles).

Mol	Type	Chain	Res	Link	Bond lengths			Bond angles		
					Counts	RMSZ	# Z > 2	Counts	RMSZ	# Z > 2
2	NAG	C	1	2	14,14,15	0.64	0	17,19,21	1.22	2 (11%)
2	NAG	C	2	2	14,14,15	0.71	0	17,19,21	1.20	3 (17%)
2	NAG	D	1	2	14,14,15	0.62	0	17,19,21	0.98	1 (5%)
2	NAG	D	2	2	14,14,15	0.62	0	17,19,21	1.28	2 (11%)

In the following table, the Chirals column lists the number of chiral outliers, the number of chiral centers analysed, the number of these observed in the model and the number defined in the Chemical Component Dictionary. Similar counts are reported in the Torsion and Rings columns. '-' means no outliers of that kind were identified.

Mol	Type	Chain	Res	Link	Chirals	Torsions	Rings
2	NAG	C	1	2	-	2/6/23/26	0/1/1/1
2	NAG	C	2	2	-	6/6/23/26	0/1/1/1
2	NAG	D	1	2	-	0/6/23/26	0/1/1/1
2	NAG	D	2	2	-	2/6/23/26	0/1/1/1

There are no bond length outliers.

All (8) bond angle outliers are listed below:

Mol	Chain	Res	Type	Atoms	Z	Observed(°)	Ideal(°)
2	D	2	NAG	O5-C1-C2	3.01	116.05	111.29
2	C	1	NAG	O5-C5-C6	2.95	111.83	107.20
2	C	2	NAG	C4-C3-C2	2.75	115.05	111.02
2	D	1	NAG	C4-C3-C2	2.47	114.64	111.02

Continued on next page...

Continued from previous page...

Mol	Chain	Res	Type	Atoms	Z	Observed(°)	Ideal(°)
2	C	2	NAG	O5-C1-C2	2.44	115.13	111.29
2	D	2	NAG	C1-O5-C5	2.38	115.42	112.19
2	C	1	NAG	C1-O5-C5	2.12	115.07	112.19
2	C	2	NAG	C1-O5-C5	2.04	114.96	112.19

There are no chirality outliers.

All (10) torsion outliers are listed below:

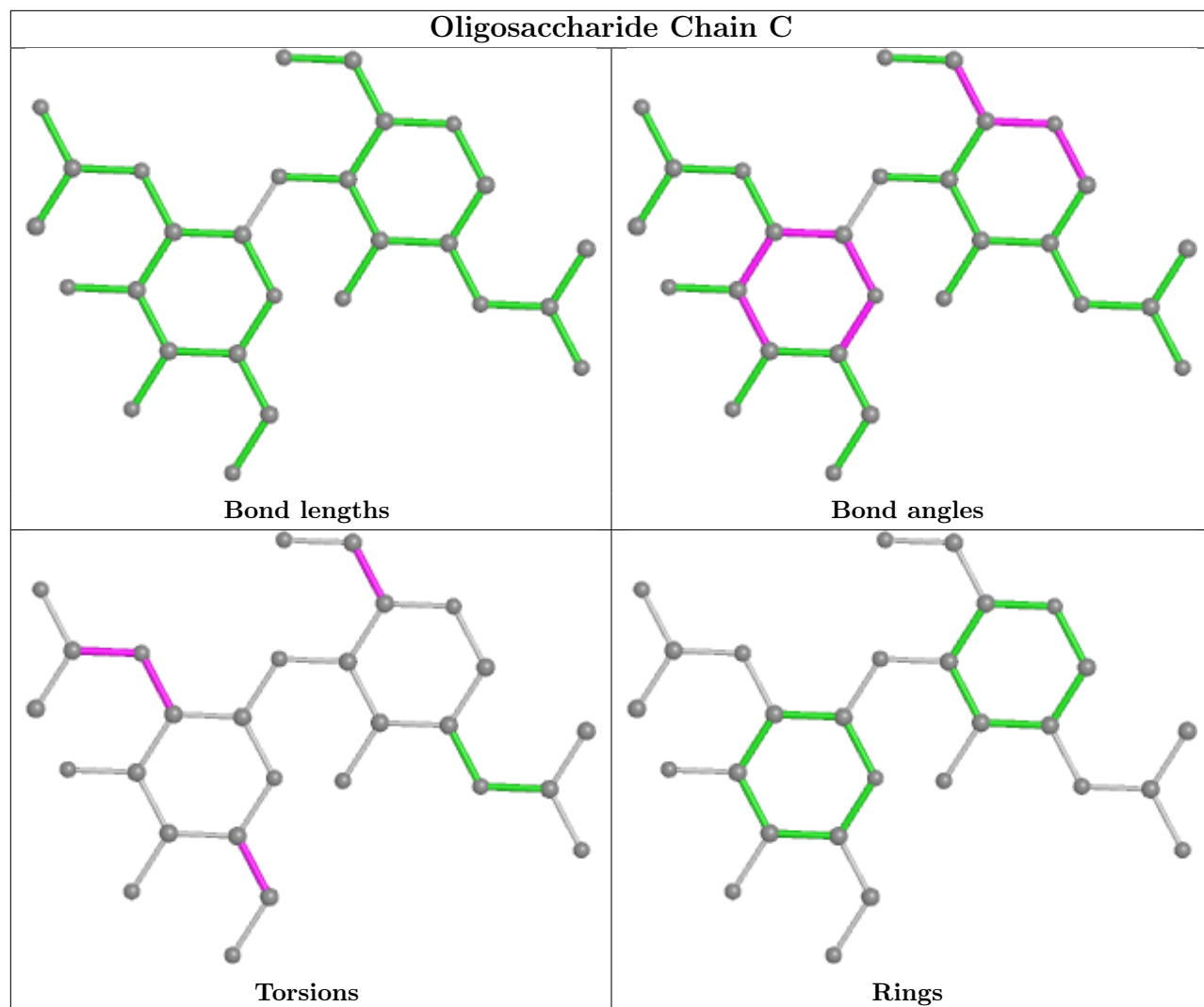
Mol	Chain	Res	Type	Atoms
2	D	2	NAG	O7-C7-N2-C2
2	C	2	NAG	C8-C7-N2-C2
2	C	2	NAG	O7-C7-N2-C2
2	D	2	NAG	C8-C7-N2-C2
2	C	1	NAG	O5-C5-C6-O6
2	C	1	NAG	C4-C5-C6-O6
2	C	2	NAG	O5-C5-C6-O6
2	C	2	NAG	C4-C5-C6-O6
2	C	2	NAG	C1-C2-N2-C7
2	C	2	NAG	C3-C2-N2-C7

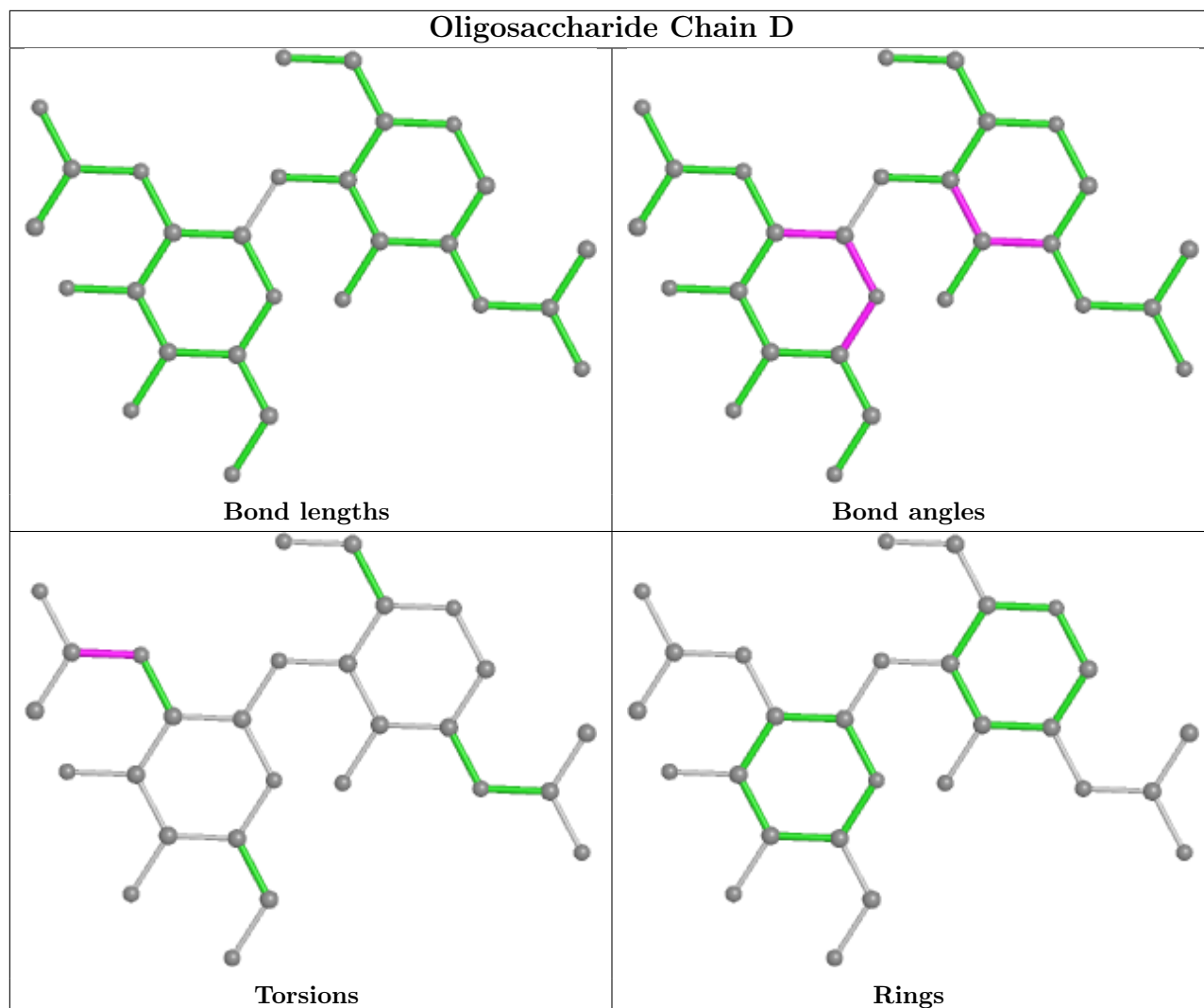
There are no ring outliers.

3 monomers are involved in 11 short contacts:

Mol	Chain	Res	Type	Clashes	Symm-Clashes
2	D	2	NAG	1	0
2	C	1	NAG	4	0
2	D	1	NAG	7	0

The following is a two-dimensional graphical depiction of Mogul quality analysis of bond lengths, bond angles, torsion angles, and ring geometry for oligosaccharide.





5.6 Ligand geometry [i](#)

12 ligands are modelled in this entry.

In the following table, the Counts columns list the number of bonds (or angles) for which Mogul statistics could be retrieved, the number of bonds (or angles) that are observed in the model and the number of bonds (or angles) that are defined in the Chemical Component Dictionary. The Link column lists molecule types, if any, to which the group is linked. The Z score for a bond length (or angle) is the number of standard deviations the observed value is removed from the expected value. A bond length (or angle) with $|Z| > 2$ is considered an outlier worth inspection. RMSZ is the root-mean-square of all Z scores of the bond lengths (or angles).

Mol	Type	Chain	Res	Link	Bond lengths			Bond angles		
					Counts	RMSZ	$\# Z > 2$	Counts	RMSZ	$\# Z > 2$
5	GOL	B	309	-	5,5,5	0.37	0	5,5,5	0.36	0
4	SO4	B	305	-	4,4,4	0.10	0	6,6,6	0.13	0
5	GOL	B	308	-	5,5,5	0.38	0	5,5,5	0.31	0
4	SO4	A	904	-	4,4,4	0.18	0	6,6,6	0.13	0

Mol	Type	Chain	Res	Link	Bond lengths			Bond angles		
					Counts	RMSZ	# Z > 2	Counts	RMSZ	# Z > 2
5	GOL	B	310	-	5,5,5	0.36	0	5,5,5	0.32	0
4	SO4	B	307	-	4,4,4	0.12	0	6,6,6	0.08	0
4	SO4	B	306	-	4,4,4	0.13	0	6,6,6	0.10	0
6	NGA	B	304	1	14,14,15	1.12	2 (14%)	17,19,21	3.12	3 (17%)
3	FUC	A	903	-	10,10,11	0.74	0	14,14,16	0.87	1 (7%)
3	FUC	B	303	-	10,10,11	0.70	0	14,14,16	0.66	0
5	GOL	A	906	-	5,5,5	0.30	0	5,5,5	0.31	0
4	SO4	A	905	-	4,4,4	0.10	0	6,6,6	0.41	0

In the following table, the Chirals column lists the number of chiral outliers, the number of chiral centers analysed, the number of these observed in the model and the number defined in the Chemical Component Dictionary. Similar counts are reported in the Torsion and Rings columns. '-' means no outliers of that kind were identified.

Mol	Type	Chain	Res	Link	Chirals	Torsions	Rings
5	GOL	B	308	-	-	2/4/4/4	-
5	GOL	B	310	-	-	0/4/4/4	-
6	NGA	B	304	1	-	2/6/23/26	0/1/1/1
5	GOL	B	309	-	-	4/4/4/4	-
3	FUC	B	303	-	-	-	0/1/1/1
3	FUC	A	903	-	-	-	0/1/1/1
5	GOL	A	906	-	-	2/4/4/4	-

All (2) bond length outliers are listed below:

Mol	Chain	Res	Type	Atoms	Z	Observed(Å)	Ideal(Å)
6	B	304	NGA	O5-C1	-2.72	1.39	1.43
6	B	304	NGA	O5-C5	-2.48	1.38	1.43

All (4) bond angle outliers are listed below:

Mol	Chain	Res	Type	Atoms	Z	Observed(°)	Ideal(°)
6	B	304	NGA	O5-C5-C6	-9.21	92.77	107.20
6	B	304	NGA	C1-O5-C5	8.40	123.57	112.19
6	B	304	NGA	C2-N2-C7	-2.38	119.52	122.90
3	A	903	FUC	C1-C2-C3	2.14	112.30	109.67

There are no chirality outliers.

All (10) torsion outliers are listed below:

Mol	Chain	Res	Type	Atoms
5	B	309	GOL	O1-C1-C2-C3
5	A	906	GOL	C1-C2-C3-O3
5	B	308	GOL	C1-C2-C3-O3
5	B	309	GOL	C1-C2-C3-O3
5	B	308	GOL	O2-C2-C3-O3
5	B	309	GOL	O1-C1-C2-O2
5	B	309	GOL	O2-C2-C3-O3
6	B	304	NGA	C8-C7-N2-C2
6	B	304	NGA	O7-C7-N2-C2
5	A	906	GOL	O2-C2-C3-O3

There are no ring outliers.

3 monomers are involved in 33 short contacts:

Mol	Chain	Res	Type	Clashes	Symm-Clashes
6	B	304	NGA	31	0
3	B	303	FUC	1	0
5	A	906	GOL	1	0

5.7 Other polymers [i](#)

There are no such residues in this entry.

5.8 Polymer linkage issues [i](#)

There are no chain breaks in this entry.

6 Fit of model and data

6.1 Protein, DNA and RNA chains

In the following table, the column labelled ‘#RSRZ > 2’ contains the number (and percentage) of RSRZ outliers, followed by percent RSRZ outliers for the chain as percentile scores relative to all X-ray entries and entries of similar resolution. The OWAB column contains the minimum, median, 95th percentile and maximum values of the occupancy-weighted average B-factor per residue. The column labelled ‘Q < 0.9’ lists the number of (and percentage) of residues with an average occupancy less than 0.9.

Mol	Chain	Analysed	<RSRZ>	#RSRZ>2	OWAB(Å ²)	Q<0.9
1	A	201/223 (90%)	0.19	9 (4%) 33 42	24, 38, 75, 118	0
1	B	196/223 (87%)	0.29	12 (6%) 21 28	27, 44, 77, 99	0
All	All	397/446 (89%)	0.24	21 (5%) 26 35	24, 42, 77, 118	0

All (21) RSRZ outliers are listed below:

Mol	Chain	Res	Type	RSRZ
1	A	212	ASN	7.4
1	A	156	ASN	5.7
1	A	211	ILE	5.1
1	B	16	ASP	4.9
1	B	154	ASP	4.0
1	A	43	ASP	3.6
1	B	134	HIS	3.2
1	B	17	ASP	3.0
1	B	94	LYS	2.9
1	A	178	ALA	2.7
1	B	136	GLN	2.7
1	B	59	GLU	2.6
1	B	153	LYS	2.6
1	B	211	ILE	2.5
1	B	156	ASN	2.4
1	A	13	ALA	2.4
1	A	48	ASN	2.3
1	A	155	GLU	2.3
1	B	43	ASP	2.0
1	B	103	LEU	2.0
1	A	47	THR	2.0

6.2 Non-standard residues in protein, DNA, RNA chains [i](#)

There are no non-standard protein/DNA/RNA residues in this entry.

6.3 Carbohydrates [i](#)

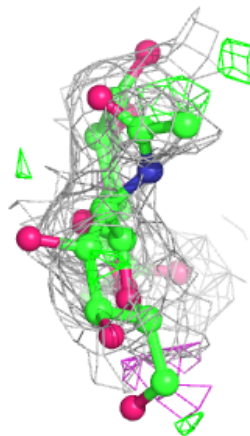
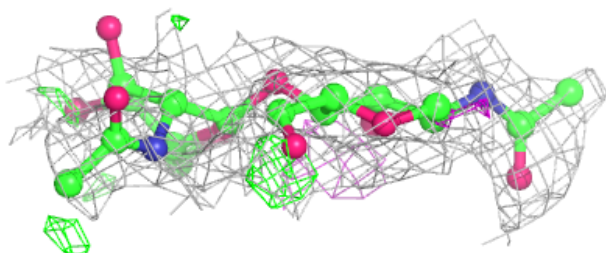
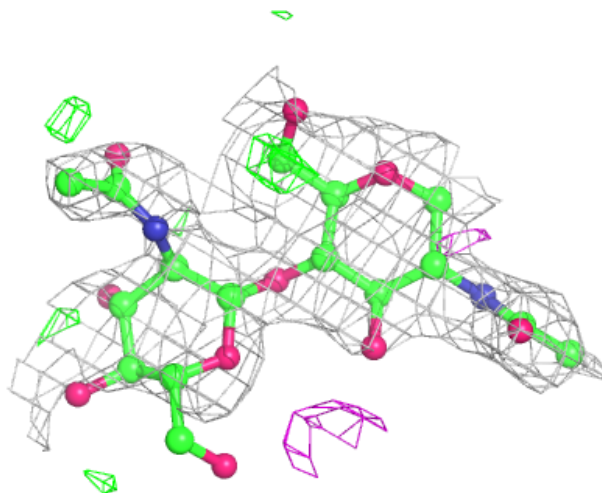
In the following table, the Atoms column lists the number of modelled atoms in the group and the number defined in the chemical component dictionary. The B-factors column lists the minimum, median, 95th percentile and maximum values of B factors of atoms in the group. The column labelled 'Q< 0.9' lists the number of atoms with occupancy less than 0.9.

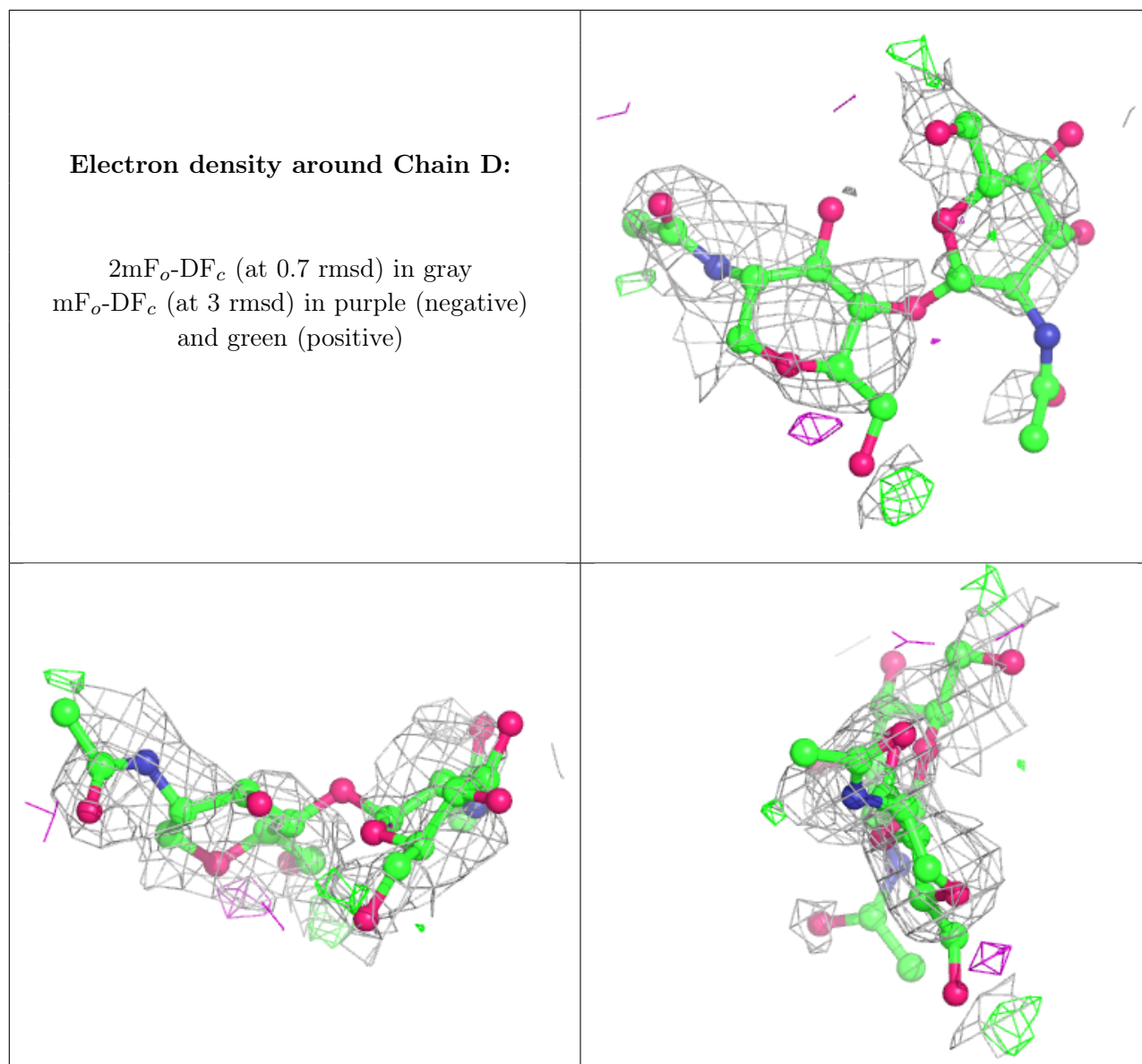
Mol	Type	Chain	Res	Atoms	RSCC	RSR	B-factors(\AA^2)	Q<0.9
2	NAG	D	2	14/15	0.54	0.57	118,129,132,133	0
2	NAG	D	1	14/15	0.65	0.38	85,98,112,123	0
2	NAG	C	1	14/15	0.68	0.24	56,70,99,106	0
2	NAG	C	2	14/15	0.75	0.43	101,110,113,114	0

The following is a graphical depiction of the model fit to experimental electron density for oligosaccharide. Each fit is shown from different orientation to approximate a three-dimensional view.

Electron density around Chain C:

$2mF_o-DF_c$ (at 0.7 rmsd) in gray
 mF_o-DF_c (at 3 rmsd) in purple (negative)
and green (positive)





6.4 Ligands [i](#)

In the following table, the Atoms column lists the number of modelled atoms in the group and the number defined in the chemical component dictionary. The B-factors column lists the minimum, median, 95th percentile and maximum values of B factors of atoms in the group. The column labelled 'Q< 0.9' lists the number of atoms with occupancy less than 0.9.

Mol	Type	Chain	Res	Atoms	RSCC	RSR	B-factors(Å ²)	Q<0.9
3	FUC	B	303	10/11	0.37	0.78	149,153,154,155	0
6	NGA	B	304	14/15	0.59	0.59	98,114,136,142	0
5	GOL	A	906	6/6	0.62	0.29	67,73,75,77	0
3	FUC	A	903	10/11	0.75	0.37	111,116,124,126	0
5	GOL	B	310	6/6	0.77	0.26	51,71,74,76	0

Continued on next page...

Continued from previous page...

Mol	Type	Chain	Res	Atoms	RSCC	RSR	B-factors(\AA^2)	Q<0.9
5	GOL	B	308	6/6	0.79	0.17	70,74,76,77	0
4	SO4	B	307	5/5	0.82	0.29	98,107,110,111	0
5	GOL	B	309	6/6	0.85	0.14	58,62,66,72	0
4	SO4	B	306	5/5	0.92	0.26	93,98,102,104	0
4	SO4	B	305	5/5	0.93	0.19	85,89,91,91	0
4	SO4	A	904	5/5	0.96	0.13	51,54,65,68	0
4	SO4	A	905	5/5	0.96	0.15	53,58,64,66	0

6.5 Other polymers [\(i\)](#)

There are no such residues in this entry.