



Full wwPDB X-ray Structure Validation Report ⓘ

May 25, 2020 – 07:57 pm BST

PDB ID : 3UM8
Title : Wild-type Plasmodium falciparum DHFR-TS complexed with cycloguanil and NADPH
Authors : Vanichtanankul, J.; Chitnumsub, P.; Kamchonwongpaisan, S.; Yuthavong, Y.
Deposited on : 2011-11-12
Resolution : 2.60 Å(reported)

This is a Full wwPDB X-ray Structure Validation Report for a publicly released PDB entry.

We welcome your comments at validation@mail.wwpdb.org

A user guide is available at

<https://www.wwpdb.org/validation/2017/XrayValidationReportHelp>

with specific help available everywhere you see the ⓘ symbol.

The following versions of software and data (see [references ⓘ](#)) were used in the production of this report:

MolProbity : 4.02b-467
Mogul : 1.8.5 (274361), CSD as541be (2020)
Xtriage (Phenix) : 1.13
EDS : 2.11
buster-report : 1.1.7 (2018)
Percentile statistics : 20191225.v01 (using entries in the PDB archive December 25th 2019)
Refmac : 5.8.0158
CCP4 : 7.0.044 (Gargrove)
Ideal geometry (proteins) : Engh & Huber (2001)
Ideal geometry (DNA, RNA) : Parkinson et al. (1996)
Validation Pipeline (wwPDB-VP) : 2.11

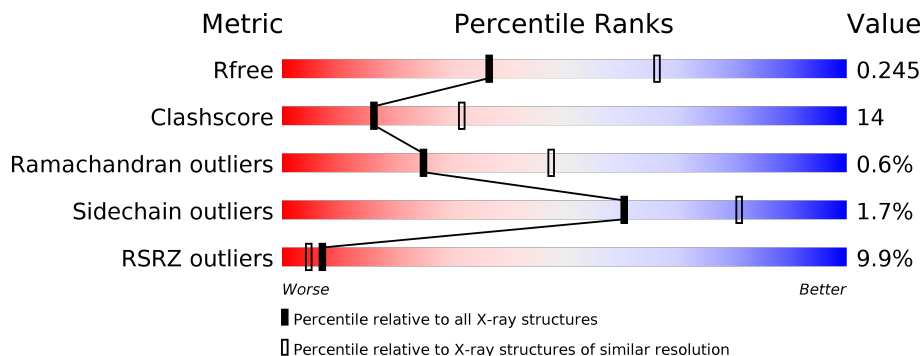
1 Overall quality at a glance i

The following experimental techniques were used to determine the structure:

X-RAY DIFFRACTION

The reported resolution of this entry is 2.60 Å.

Percentile scores (ranging between 0-100) for global validation metrics of the entry are shown in the following graphic. The table shows the number of entries on which the scores are based.



Metric	Whole archive (#Entries)	Similar resolution (#Entries, resolution range(Å))
R_{free}	130704	3163 (2.60-2.60)
Clashscore	141614	3518 (2.60-2.60)
Ramachandran outliers	138981	3455 (2.60-2.60)
Sidechain outliers	138945	3455 (2.60-2.60)
RSRZ outliers	127900	3104 (2.60-2.60)

The table below summarises the geometric issues observed across the polymeric chains and their fit to the electron density. The red, orange, yellow and green segments on the lower bar indicate the fraction of residues that contain outliers for ≥ 3 , 2, 1 and 0 types of geometric quality criteria respectively. A grey segment represents the fraction of residues that are not modelled. The numeric value for each fraction is indicated below the corresponding segment, with a dot representing fractions $\leq 5\%$. The upper red bar (where present) indicates the fraction of residues that have poor fit to the electron density. The numeric value is given above the bar.

Mol	Chain	Length	Quality of chain
1	A	608	
1	B	608	

2 Entry composition [i](#)

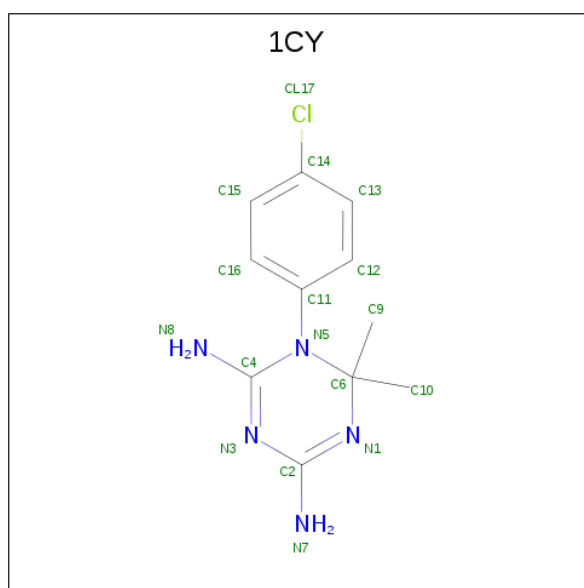
There are 5 unique types of molecules in this entry. The entry contains 9640 atoms, of which 0 are hydrogens and 0 are deuteriums.

In the tables below, the ZeroOcc column contains the number of atoms modelled with zero occupancy, the AltConf column contains the number of residues with at least one atom in alternate conformation and the Trace column contains the number of residues modelled with at most 2 atoms.

- Molecule 1 is a protein called Bifunctional dihydrofolate reductase-thymidylate synthase.

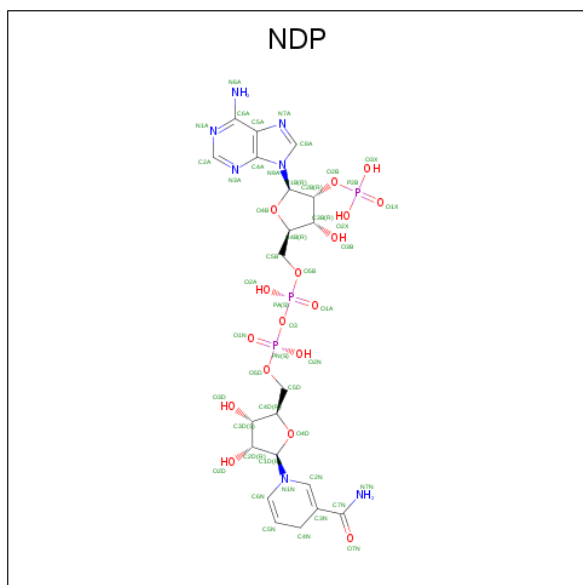
Mol	Chain	Residues	Atoms					ZeroOcc	AltConf	Trace
			Total	C	N	O	S			
1	A	547	Total 4543	C 2931	N 750	O 834	S 28	0	0	0
1	B	542	Total 4501	C 2906	N 742	O 825	S 28	0	0	0

- Molecule 2 is 1-(4-chlorophenyl)-6,6-dimethyl-1,6-dihydro-1,3,5-triazine-2,4-diamine (three-letter code: 1CY) (formula: C₁₁H₁₄ClN₅).



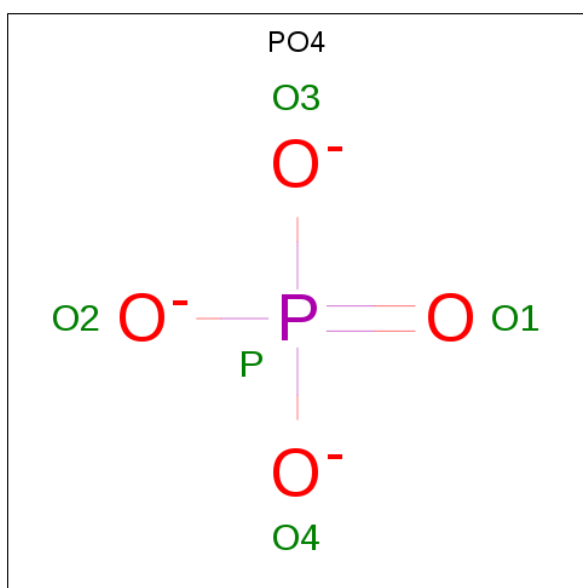
Mol	Chain	Residues	Atoms				ZeroOcc	AltConf
			Total	C	Cl	N		
2	A	1	Total 17	C 11	Cl 1	N 5	0	0
2	B	1	Total 17	C 11	Cl 1	N 5	0	0

- Molecule 3 is NADPH DIHYDRO-NICOTINAMIDE-ADENINE-DINUCLEOTIDE PHOSPHATE (three-letter code: NDP) (formula: C₂₁H₃₀N₇O₁₇P₃).



Mol	Chain	Residues	Atoms				ZeroOcc	AltConf	
			Total	C	N	O			P
3	A	1	48	21	7	17	3	0	0
3	B	1	48	21	7	17	3	0	0

- Molecule 4 is PHOSPHATE ION (three-letter code: PO4) (formula: O₄P).



Mol	Chain	Residues	Atoms		ZeroOcc	AltConf
			Total	O P		
4	A	1	5	4 1	0	0
4	A	1	5	4 1	0	0

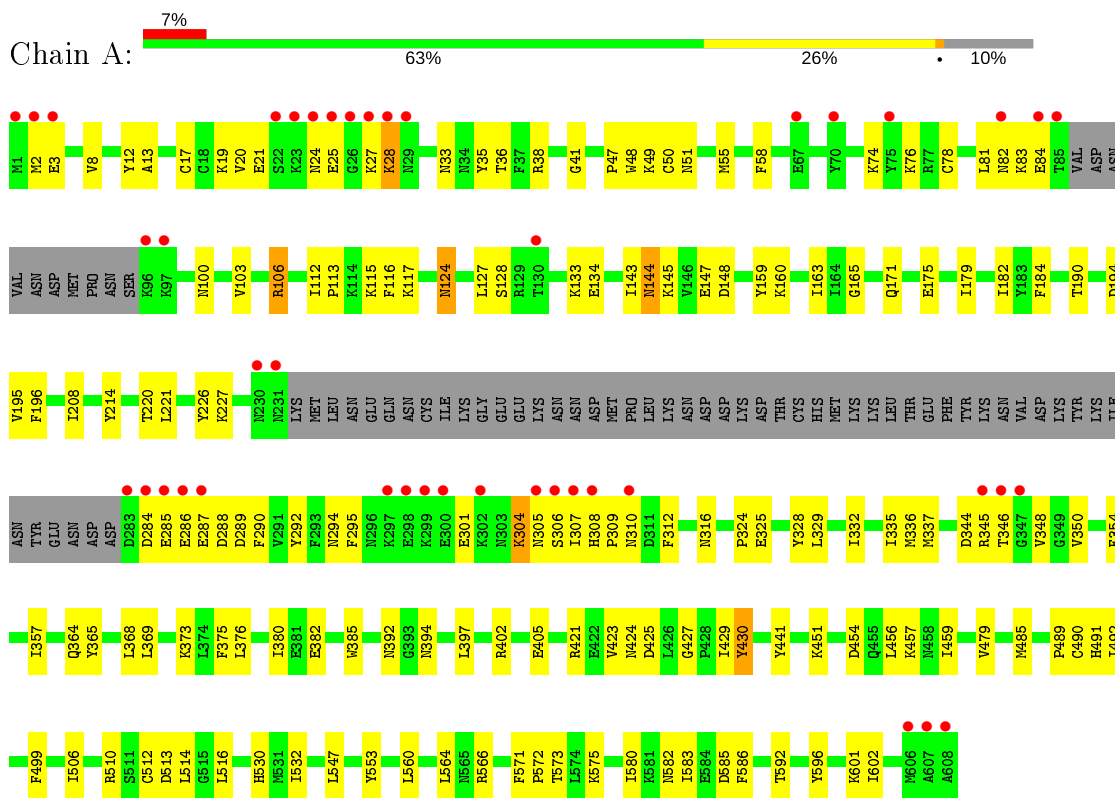
- Molecule 5 is water.

Mol	Chain	Residues	Atoms		ZeroOcc	AltConf
5	A	250	Total 250	O 250	0	0
5	B	206	Total 206	O 206	0	0

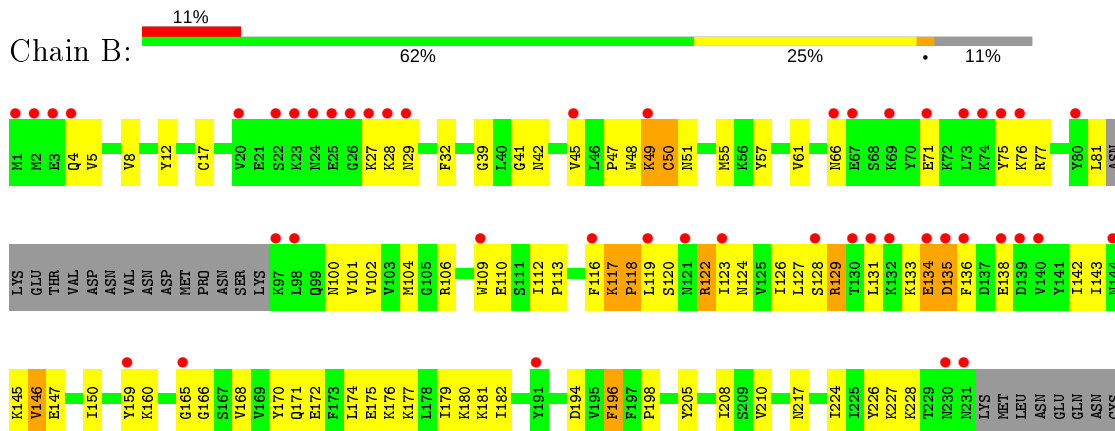
3 Residue-property plots [i](#)

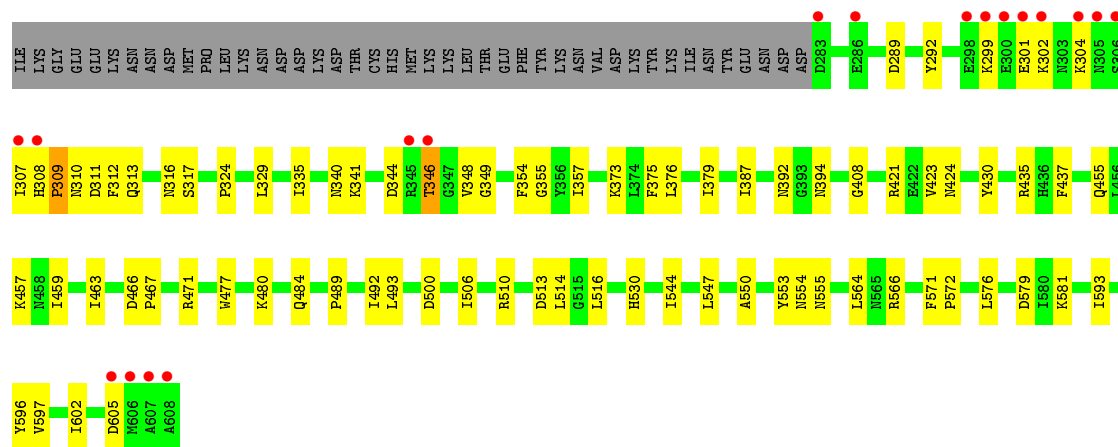
These plots are drawn for all protein, RNA and DNA chains in the entry. The first graphic for a chain summarises the proportions of the various outlier classes displayed in the second graphic. The second graphic shows the sequence view annotated by issues in geometry and electron density. Residues are color-coded according to the number of geometric quality criteria for which they contain at least one outlier: green = 0, yellow = 1, orange = 2 and red = 3 or more. A red dot above a residue indicates a poor fit to the electron density ($RSRZ > 2$). Stretches of 2 or more consecutive residues without any outlier are shown as a green connector. Residues present in the sample, but not in the model, are shown in grey.

- Molecule 1: Bifunctional dihydrofolate reductase-thymidylate synthase



- Molecule 1: Bifunctional dihydrofolate reductase-thymidylate synthase





4 Data and refinement statistics

Property	Value	Source
Space group	P 21 21 21	Depositor
Cell constants a, b, c, α , β , γ	58.76Å 157.54Å 164.51Å 90.00° 90.00° 90.00°	Depositor
Resolution (Å)	39.16 – 2.60 38.09 – 2.60	Depositor EDS
% Data completeness (in resolution range)	98.4 (39.16-2.60) 98.4 (38.09-2.60)	Depositor EDS
R_{merge}	0.05	Depositor
R_{sym}	(Not available)	Depositor
$\langle I/\sigma(I) \rangle$ ¹	4.12 (at 2.61Å)	Xtrriage
Refinement program	CNS 1.2	Depositor
R, R_{free}	0.212 , 0.258 0.203 , 0.245	Depositor DCC
R_{free} test set	2368 reflections (5.02%)	wwPDB-VP
Wilson B-factor (Å ²)	45.3	Xtrriage
Anisotropy	0.392	Xtrriage
Bulk solvent k_{sol} (e/Å ³), B_{sol} (Å ²)	0.34 , 56.7	EDS
L-test for twinning ²	$\langle L \rangle = 0.50$, $\langle L^2 \rangle = 0.34$	Xtrriage
Estimated twinning fraction	0.007 for -h,l,k	Xtrriage
F_o, F_c correlation	0.94	EDS
Total number of atoms	9640	wwPDB-VP
Average B, all atoms (Å ²)	52.0	wwPDB-VP

Xtrriage's analysis on translational NCS is as follows: *The largest off-origin peak in the Patterson function is 3.51% of the height of the origin peak. No significant pseudotranslation is detected.*

¹Intensities estimated from amplitudes.

²Theoretical values of $\langle |L| \rangle$, $\langle L^2 \rangle$ for acentric reflections are 0.5, 0.333 respectively for untwinned datasets, and 0.375, 0.2 for perfectly twinned datasets.

5 Model quality [i](#)

5.1 Standard geometry [i](#)

Bond lengths and bond angles in the following residue types are not validated in this section: NDP, 1CY, PO4

The Z score for a bond length (or angle) is the number of standard deviations the observed value is removed from the expected value. A bond length (or angle) with $|Z| > 5$ is considered an outlier worth inspection. RMSZ is the root-mean-square of all Z scores of the bond lengths (or angles).

Mol	Chain	Bond lengths		Bond angles	
		RMSZ	# Z >5	RMSZ	# Z >5
1	A	0.41	1/4648 (0.0%)	0.63	0/6272
1	B	0.44	2/4606 (0.0%)	0.63	0/6217
All	All	0.42	3/9254 (0.0%)	0.63	0/12489

All (3) bond length outliers are listed below:

Mol	Chain	Res	Type	Atoms	Z	Observed(Å)	Ideal(Å)
1	B	117	LYS	C-N	-6.50	1.21	1.34
1	A	286	GLU	CB-CG	6.21	1.64	1.52
1	B	118	PRO	CG-CD	5.47	1.68	1.50

There are no bond angle outliers.

There are no chirality outliers.

There are no planarity outliers.

5.2 Too-close contacts [i](#)

In the following table, the Non-H and H(model) columns list the number of non-hydrogen atoms and hydrogen atoms in the chain respectively. The H(added) column lists the number of hydrogen atoms added and optimized by MolProbity. The Clashes column lists the number of clashes within the asymmetric unit, whereas Symm-Clashes lists symmetry related clashes.

Mol	Chain	Non-H	H(model)	H(added)	Clashes	Symm-Clashes
1	A	4543	0	4497	129	0
1	B	4501	0	4452	140	0
2	A	17	0	14	1	0
2	B	17	0	14	0	0
3	A	48	0	26	3	0
3	B	48	0	26	6	0

Continued on next page...

Continued from previous page...

Mol	Chain	Non-H	H(model)	H(added)	Clashes	Symm-Clashes
4	A	10	0	0	1	0
5	A	250	0	0	5	0
5	B	206	0	0	8	0
All	All	9640	0	9029	263	0

The all-atom clashscore is defined as the number of clashes found per 1000 atoms (including hydrogen atoms). The all-atom clashscore for this structure is 14.

All (263) close contacts within the same asymmetric unit are listed below, sorted by their clash magnitude.

Atom-1	Atom-2	Interatomic distance (Å)	Clash overlap (Å)
1:B:376:LEU:HD22	1:B:379:ILE:HD11	1.41	1.00
1:B:102:VAL:HG22	1:B:123:ILE:O	1.64	0.97
1:B:145:LYS:HG2	1:B:146:VAL:H	1.28	0.97
1:B:119:LEU:HB3	1:B:122:ARG:CZ	1.95	0.96
1:A:127:LEU:HD23	1:A:143:ILE:HG13	1.53	0.90
1:A:165:GLY:HA3	3:A:610:NDP:H5N	1.57	0.86
1:A:451:LYS:NZ	5:A:1450:HOH:O	2.11	0.83
1:B:101:VAL:HA	1:B:123:ILE:HB	1.61	0.82
1:B:165:GLY:HA3	3:B:710:NDP:H5N	1.59	0.81
1:B:51:ASN:O	1:B:55:MET:HG2	1.83	0.79
1:A:50:CYS:HA	1:A:55:MET:HE1	1.64	0.79
1:A:8:VAL:HA	1:A:76:LYS:HD3	1.65	0.78
1:A:51:ASN:H	1:A:55:MET:CE	1.99	0.76
1:A:346:THR:O	1:A:346:THR:HG22	1.83	0.76
1:A:28:LYS:HA	1:A:28:LYS:NZ	2.01	0.75
1:B:329:LEU:HD22	1:B:564:LEU:HD23	1.69	0.75
1:A:20:VAL:HG12	1:A:21:GLU:N	2.01	0.75
1:B:301:GLU:HB2	1:B:304:LYS:HB2	1.67	0.75
1:B:29:ASN:HB3	1:B:32:PHE:CZ	2.21	0.75
1:B:102:VAL:CG2	1:B:123:ILE:O	2.35	0.73
1:A:301:GLU:O	1:A:304:LYS:HD2	1.87	0.73
1:A:41:GLY:HA2	1:A:47:PRO:HD3	1.72	0.72
1:B:100:ASN:O	1:B:123:ILE:HB	1.90	0.72
1:B:145:LYS:HG2	1:B:146:VAL:N	2.03	0.72
1:A:78:CYS:HB3	1:A:83:LYS:O	1.90	0.71
1:A:28:LYS:HA	1:A:28:LYS:HZ3	1.54	0.71
1:B:210:VAL:HG12	1:B:224:ILE:HG22	1.72	0.70
1:A:106:ARG:HG3	3:A:610:NDP:O3X	1.91	0.70
1:B:120:SER:N	1:B:122:ARG:HH21	1.89	0.70
1:A:124:ASN:N	1:A:124:ASN:HD22	1.89	0.69

Continued on next page...

Continued from previous page...

Atom-1	Atom-2	Interatomic distance (Å)	Clash overlap (Å)
1:A:24:ASN:O	1:A:27:LYS:HG2	1.92	0.69
1:B:5:VAL:HG11	1:B:150:ILE:HD12	1.72	0.69
1:B:335:ILE:HD12	1:B:514:LEU:HD13	1.74	0.69
1:A:304:LYS:HD3	1:A:305:ASN:N	2.08	0.68
1:B:119:LEU:HB3	1:B:122:ARG:NH2	2.09	0.68
1:B:344:ASP:HB3	1:B:348:VAL:O	1.94	0.68
1:A:112:ILE:O	1:A:117:LYS:HE3	1.93	0.68
1:A:51:ASN:H	1:A:55:MET:HE3	1.59	0.67
1:B:104:MET:HA	1:B:165:GLY:O	1.93	0.67
1:A:491:HIS:CE1	5:A:1413:HOH:O	2.46	0.67
1:A:106:ARG:HH11	1:A:106:ARG:HG3	1.60	0.67
1:A:194:ASP:OD1	1:A:195:VAL:HG23	1.95	0.67
1:A:20:VAL:CG1	1:A:21:GLU:N	2.58	0.67
1:B:126:ILE:N	1:B:126:ILE:HD12	2.10	0.66
1:B:500:ASP:O	5:B:1433:HOH:O	2.13	0.66
1:B:471:ARG:NH1	5:B:1334:HOH:O	2.26	0.66
1:A:165:GLY:HA3	3:A:610:NDP:C5N	2.27	0.65
1:B:182:ILE:HB	1:B:226:TYR:HB2	1.79	0.65
1:B:136:PHE:CD1	1:B:142:ILE:HD11	2.32	0.65
1:A:21:GLU:HG2	1:A:21:GLU:O	1.97	0.64
1:A:304:LYS:HD3	1:A:305:ASN:H	1.61	0.64
1:A:145:LYS:HG2	1:A:148:ASP:OD2	1.98	0.64
1:A:304:LYS:HD2	1:A:304:LYS:H	1.64	0.63
1:B:492:ILE:HD11	1:B:510:ARG:HD3	1.81	0.63
1:B:106:ARG:O	1:B:110:GLU:HG3	1.99	0.62
1:A:147:GLU:H	1:A:147:GLU:CD	2.04	0.61
1:B:346:THR:HG22	1:B:348:VAL:HG22	1.82	0.60
1:A:328:TYR:CZ	1:A:332:ILE:HD11	2.35	0.60
1:B:29:ASN:HB3	1:B:32:PHE:CE1	2.36	0.60
1:B:131:LEU:HD22	1:B:136:PHE:CE1	2.37	0.60
1:B:27:LYS:HG3	1:B:28:LYS:N	2.17	0.59
1:B:346:THR:CG2	1:B:348:VAL:HG22	2.33	0.59
1:B:179:ILE:HB	1:B:205:TYR:OH	2.03	0.59
1:A:285:GLU:OE2	1:B:160:LYS:NZ	2.30	0.59
1:B:166:GLY:HA2	3:B:710:NDP:H5N	1.85	0.59
1:B:50:CYS:O	1:B:217:ASN:ND2	2.36	0.58
1:A:12:TYR:CE2	1:A:160:LYS:HD3	2.39	0.58
1:A:27:LYS:O	1:A:27:LYS:HG3	2.02	0.58
1:B:133:LYS:HD2	1:B:133:LYS:H	1.67	0.58
1:B:127:LEU:HA	1:B:143:ILE:HG13	1.84	0.58
1:B:42:ASN:HA	1:B:194:ASP:OD2	2.04	0.57

Continued on next page...

Continued from previous page...

Atom-1	Atom-2	Interatomic distance (Å)	Clash overlap (Å)
1:B:579:ASP:O	1:B:581:LYS:HG2	2.05	0.57
1:A:100:ASN:OD1	1:A:159:TYR:HB3	2.05	0.56
1:B:373:LYS:HE2	1:B:375:PHE:CE1	2.40	0.56
1:A:51:ASN:H	1:A:55:MET:HE1	1.70	0.56
1:A:306:SER:O	1:A:307:ILE:HD13	2.06	0.56
1:B:109:TRP:O	1:B:117:LYS:HE2	2.05	0.56
1:A:345:ARG:O	1:A:346:THR:HB	2.06	0.56
1:A:289:ASP:HA	1:A:292:TYR:CD2	2.40	0.56
1:A:214:TYR:O	1:A:220:THR:HA	2.06	0.55
1:A:506:ILE:HG13	1:B:354:PHE:CE2	2.41	0.55
1:B:118:PRO:HB2	1:B:124:ASN:ND2	2.21	0.55
1:B:166:GLY:HA2	3:B:710:NDP:C5N	2.37	0.55
1:A:13:ALA:HB2	1:A:179:ILE:HD12	1.89	0.55
1:B:302:LYS:HZ3	1:B:341:LYS:H	1.54	0.55
1:A:485:MET:SD	1:A:489:PRO:HD3	2.47	0.55
1:B:168:VAL:O	1:B:172:GLU:HG2	2.06	0.55
1:B:553:TYR:HB3	1:B:555:ASN:OD1	2.07	0.55
1:A:159:TYR:CD2	1:A:160:LYS:HG3	2.42	0.55
1:A:329:LEU:HD22	1:A:564:LEU:HD23	1.88	0.54
1:B:457:LYS:HB3	1:B:457:LYS:NZ	2.23	0.54
1:A:376:LEU:O	1:A:380:ILE:HG13	2.07	0.54
1:A:350:VAL:HG12	1:A:553:TYR:CD1	2.42	0.54
1:B:48:TRP:O	1:B:49:LYS:HB3	2.07	0.54
1:B:109:TRP:CE2	1:B:117:LYS:HD3	2.42	0.54
1:A:81:LEU:O	1:A:82:ASN:HB2	2.08	0.54
1:A:301:GLU:OE1	1:A:337:MET:HB3	2.08	0.53
1:A:324:PRO:HB2	1:A:571:PHE:HE2	1.73	0.53
1:B:208:ILE:HD13	1:B:227:LYS:HB2	1.89	0.53
1:B:308:HIS:HB2	1:B:311:ASP:OD1	2.08	0.53
1:B:168:VAL:HG23	3:B:710:NDP:O1N	2.07	0.53
1:A:499:PHE:CE1	1:B:340:ASN:HB3	2.44	0.53
1:A:513:ASP:OD2	1:A:516:LEU:HB2	2.08	0.53
1:A:368:LEU:HD13	1:A:376:LEU:HD11	1.90	0.53
1:B:506:ILE:HG12	1:B:544:ILE:HB	1.91	0.52
1:B:120:SER:O	1:B:122:ARG:NH2	2.42	0.52
1:B:100:ASN:OD1	1:B:159:TYR:HB3	2.09	0.52
1:B:547:LEU:HD12	1:B:547:LEU:N	2.25	0.52
1:B:210:VAL:HG12	1:B:224:ILE:CG2	2.39	0.52
1:B:109:TRP:CZ2	1:B:117:LYS:HD3	2.45	0.52
1:A:490:CYS:SG	5:A:1303:HOH:O	2.59	0.52
1:B:172:GLU:O	1:B:176:LYS:HG2	2.09	0.52

Continued on next page...

Continued from previous page...

Atom-1	Atom-2	Interatomic distance (Å)	Clash overlap (Å)
1:B:459:ILE:O	1:B:463:ILE:HG13	2.10	0.52
1:B:133:LYS:CD	1:B:133:LYS:H	2.22	0.52
1:B:102:VAL:HG21	1:B:122:ARG:HG2	1.93	0.51
1:B:477:TRP:HE3	1:B:489:PRO:HG2	1.75	0.51
1:A:2:MET:HG2	1:A:3:GLU:N	2.26	0.51
1:A:332:ILE:HD13	1:A:560:LEU:HD22	1.93	0.51
1:A:335:ILE:HD12	1:A:514:LEU:HD13	1.93	0.51
1:B:376:LEU:CD2	1:B:379:ILE:HD11	2.26	0.51
1:B:4:GLN:O	1:B:8:VAL:HG23	2.10	0.51
1:B:572:PRO:HB3	1:B:596:TYR:HA	1.92	0.51
1:B:349:GLY:C	1:B:554:ASN:ND2	2.64	0.51
1:A:171:GLN:O	1:A:175:GLU:HB2	2.10	0.50
1:A:382:GLU:O	1:A:385:TRP:HB3	2.11	0.50
1:B:480:LYS:HE2	5:B:1233:HOH:O	2.11	0.50
1:B:324:PRO:HB2	1:B:571:PHE:HE2	1.76	0.50
1:A:304:LYS:HD2	1:A:304:LYS:N	2.27	0.50
1:A:344:ASP:HB3	1:A:348:VAL:HB	1.94	0.50
1:A:373:LYS:HB3	1:A:601:LYS:HB3	1.94	0.50
1:B:48:TRP:O	1:B:49:LYS:CB	2.59	0.50
1:A:423:VAL:O	1:A:424:ASN:HB2	2.11	0.50
1:B:493:LEU:HD12	1:B:493:LEU:C	2.32	0.49
1:A:115:LYS:HE3	1:A:116:PHE:CE2	2.48	0.49
1:A:582:ASN:HB3	1:A:585:ASP:OD2	2.11	0.49
1:B:41:GLY:HA2	1:B:47:PRO:HD3	1.94	0.49
1:A:392:ASN:OD1	1:A:394:ASN:HB2	2.13	0.49
1:A:530:HIS:CE1	5:A:1434:HOH:O	2.66	0.49
1:B:133:LYS:N	1:B:133:LYS:HD2	2.28	0.49
1:A:456:LEU:O	1:A:459:ILE:HG13	2.13	0.49
1:A:124:ASN:N	1:A:124:ASN:ND2	2.60	0.49
1:A:19:LYS:O	1:A:190:THR:HA	2.13	0.49
1:A:50:CYS:CA	1:A:55:MET:HE1	2.40	0.49
1:B:530:HIS:HB3	1:B:576:LEU:HD11	1.94	0.49
1:A:33:ASN:H	1:A:36:THR:HG1	1.61	0.48
1:A:421:ARG:HD2	1:A:425:ASP:CG	2.34	0.48
1:B:457:LYS:HB3	1:B:457:LYS:HZ2	1.78	0.48
1:A:346:THR:O	1:A:346:THR:CG2	2.55	0.48
1:A:421:ARG:HH11	1:A:421:ARG:HG2	1.79	0.48
1:B:376:LEU:HD12	1:B:593:ILE:HG13	1.96	0.48
1:B:47:PRO:HB2	1:B:48:TRP:CE3	2.49	0.48
1:A:58:PHE:CZ	2:A:609:1CY:H16	2.49	0.47
1:B:307:ILE:CG2	1:B:312:PHE:HE2	2.27	0.47

Continued on next page...

Continued from previous page...

Atom-1	Atom-2	Interatomic distance (Å)	Clash overlap (Å)
1:A:290:PHE:CE1	1:A:294:ASN:ND2	2.82	0.47
1:B:171:GLN:HA	1:B:198:PRO:HG2	1.96	0.47
1:B:423:VAL:O	1:B:424:ASN:HB2	2.14	0.47
1:B:109:TRP:CH2	1:B:118:PRO:HB3	2.49	0.47
1:B:113:PRO:HG2	1:B:116:PHE:HD2	1.79	0.47
1:A:128:SER:O	1:A:144:ASN:HA	2.14	0.47
1:A:290:PHE:O	1:A:294:ASN:ND2	2.46	0.47
1:B:12:TYR:CE1	1:B:180:LYS:HD3	2.49	0.47
1:B:355:GLY:HA2	1:B:547:LEU:O	2.15	0.47
1:A:159:TYR:CE2	1:A:160:LYS:HE3	2.49	0.47
1:A:532:ILE:HD13	1:A:583:ILE:HD13	1.96	0.47
1:A:575:LYS:HB2	1:A:592:THR:HB	1.96	0.47
1:A:402:ARG:HG2	1:A:402:ARG:HH11	1.80	0.47
1:B:32:PHE:CD1	1:B:597:VAL:HG13	2.50	0.47
1:B:312:PHE:HB2	1:B:316:ASN:HD22	1.80	0.47
1:A:20:VAL:HG21	1:A:196:PHE:HE1	1.80	0.46
1:B:17:CYS:HA	1:B:39:GLY:O	2.15	0.46
1:A:144:ASN:HD21	1:A:145:LYS:NZ	2.14	0.46
1:B:129:ARG:HG3	3:B:710:NDP:O1X	2.16	0.46
1:B:12:TYR:CD1	1:B:181:LYS:HB2	2.51	0.46
1:B:75:TYR:HD1	1:B:76:LYS:HG3	1.80	0.46
1:A:103:VAL:HB	1:A:163:ILE:HD13	1.96	0.46
1:A:17:CYS:HB2	1:A:184:PHE:CE1	2.49	0.46
1:B:313:GLN:O	1:B:317:SER:HB3	2.16	0.46
1:B:566:ARG:NH1	1:B:602:ILE:HD11	2.30	0.46
1:A:402:ARG:HG2	1:A:402:ARG:NH1	2.31	0.46
1:A:20:VAL:HG21	1:A:196:PHE:CE1	2.51	0.46
1:B:102:VAL:CG2	1:B:122:ARG:HG2	2.46	0.46
1:B:120:SER:N	1:B:122:ARG:NH2	2.60	0.46
1:B:455:GLN:HA	5:B:1420:HOH:O	2.16	0.45
1:B:45:VAL:HB	5:B:1362:HOH:O	2.16	0.45
1:A:20:VAL:CG1	1:A:21:GLU:H	2.27	0.45
1:A:83:LYS:O	1:A:84:GLU:HG3	2.17	0.45
1:A:492:ILE:HD11	1:A:510:ARG:HD3	1.99	0.45
1:B:112:ILE:HB	1:B:117:LYS:HE2	1.98	0.45
1:B:307:ILE:HG22	1:B:307:ILE:O	2.16	0.44
1:B:484:GLN:HG3	5:B:1161:HOH:O	2.16	0.44
1:A:354:PHE:CE2	1:B:506:ILE:HG13	2.51	0.44
1:A:301:GLU:O	1:A:304:LYS:CD	2.62	0.44
1:A:304:LYS:N	1:A:304:LYS:CD	2.80	0.44
1:B:134:GLU:N	1:B:134:GLU:OE1	2.51	0.44

Continued on next page...

Continued from previous page...

Atom-1	Atom-2	Interatomic distance (Å)	Clash overlap (Å)
1:A:48:TRP:O	1:A:49:LYS:HB2	2.16	0.44
1:B:5:VAL:O	1:B:8:VAL:N	2.46	0.44
1:A:106:ARG:CG	1:A:106:ARG:HH11	2.29	0.44
1:A:325:GLU:HG3	1:A:369:LEU:HD22	2.00	0.44
1:B:127:LEU:O	3:B:710:NDP:H1B	2.18	0.44
1:B:310:ASN:ND2	1:B:310:ASN:O	2.51	0.44
1:A:479:VAL:HB	1:B:437:PHE:CD1	2.52	0.44
1:A:144:ASN:HD21	1:A:145:LYS:HZ2	1.66	0.44
1:B:131:LEU:HD22	1:B:136:PHE:CZ	2.53	0.44
1:A:208:ILE:HD13	1:A:227:LYS:HB2	2.00	0.44
1:B:101:VAL:HG22	1:B:123:ILE:HG21	2.00	0.44
1:A:113:PRO:HB2	1:A:116:PHE:HD2	1.83	0.43
1:B:101:VAL:HG22	1:B:123:ILE:HD13	1.99	0.43
1:A:357:ILE:HB	1:B:357:ILE:HD11	2.01	0.43
1:A:572:PRO:HB3	1:A:596:TYR:HA	2.01	0.43
1:B:138:GLU:H	1:B:138:GLU:CD	2.22	0.43
1:A:221:LEU:N	1:A:221:LEU:HD23	2.33	0.43
1:B:126:ILE:CD1	1:B:126:ILE:N	2.81	0.43
1:B:71:GLU:HA	1:B:71:GLU:OE1	2.18	0.43
1:A:144:ASN:HD22	1:A:144:ASN:C	2.21	0.43
1:A:427:GLY:HA2	1:A:441:TYR:CE2	2.54	0.43
1:B:205:TYR:CD1	1:B:228:LYS:HA	2.53	0.43
1:B:387:ILE:O	1:B:435:ARG:NH1	2.52	0.43
1:B:196:PHE:CD1	1:B:196:PHE:N	2.86	0.42
1:A:182:ILE:HB	1:A:226:TYR:HB2	2.00	0.42
1:A:373:LYS:HE3	1:A:375:PHE:CZ	2.53	0.42
1:A:510:ARG:NH1	4:A:801:PO4:O2	2.51	0.42
1:B:75:TYR:HD1	1:B:76:LYS:CG	2.32	0.42
1:A:335:ILE:HD12	1:A:514:LEU:CD1	2.48	0.42
1:A:573:THR:HA	5:A:1159:HOH:O	2.18	0.42
1:B:309:PRO:C	1:B:311:ASP:H	2.22	0.42
1:B:57:TYR:O	1:B:61:VAL:HG23	2.19	0.42
1:A:336:MET:HE3	1:A:560:LEU:HB2	2.01	0.42
1:B:170:TYR:O	1:B:174:LEU:HG	2.20	0.42
1:B:421:ARG:HG2	1:B:421:ARG:HH11	1.85	0.42
1:B:466:ASP:N	1:B:467:PRO:CD	2.83	0.42
1:A:454:ASP:OD2	1:A:457:LYS:HD2	2.20	0.42
1:B:175:GLU:O	1:B:177:LYS:HG3	2.20	0.42
1:B:112:ILE:O	1:B:117:LYS:HE3	2.20	0.42
1:B:308:HIS:HB3	1:B:309:PRO:HD2	2.01	0.42
1:A:35:TYR:O	1:A:38:ARG:NH1	2.48	0.41

Continued on next page...

Continued from previous page...

Atom-1	Atom-2	Interatomic distance (Å)	Clash overlap (Å)
1:B:513:ASP:OD2	1:B:516:LEU:HB3	2.19	0.41
1:B:77:ARG:O	1:B:81:LEU:HG	2.19	0.41
1:A:147:GLU:CD	1:A:147:GLU:N	2.72	0.41
1:A:429:ILE:O	1:A:430:TYR:C	2.58	0.41
1:B:514:LEU:HD11	1:B:550:ALA:HB1	2.02	0.41
1:A:397:LEU:HD22	1:A:402:ARG:NH1	2.35	0.41
1:B:392:ASN:OD1	1:B:394:ASN:HB2	2.20	0.41
1:A:312:PHE:HB2	1:A:316:ASN:ND2	2.36	0.41
1:A:512:CYS:SG	1:A:547:LEU:HD22	2.60	0.41
1:B:134:GLU:O	1:B:135:ASP:C	2.58	0.41
1:A:74:LYS:O	1:A:78:CYS:HB2	2.21	0.41
1:B:572:PRO:HD3	5:B:1042:HOH:O	2.20	0.41
1:A:292:TYR:O	1:A:295:PHE:HB3	2.21	0.41
1:B:106:ARG:HB2	1:B:128:SER:HB2	2.03	0.41
1:B:289:ASP:HA	1:B:292:TYR:CD2	2.55	0.41
1:B:32:PHE:CG	1:B:597:VAL:HG13	2.56	0.41
1:A:566:ARG:CZ	1:A:602:ILE:HD11	2.51	0.41
1:B:605:ASP:HB3	5:B:1169:HOH:O	2.20	0.41
1:A:308:HIS:HB3	1:A:309:PRO:HD2	2.02	0.41
1:A:364:GLN:O	1:A:365:TYR:HB3	2.20	0.41
1:B:408:GLY:O	1:B:423:VAL:HG13	2.21	0.40
1:A:133:LYS:HE2	1:A:134:GLU:OE2	2.22	0.40
1:B:335:ILE:CD1	1:B:514:LEU:HD13	2.47	0.40
1:A:402:ARG:NH1	1:A:405:GLU:OE2	2.54	0.40
1:A:580:ILE:HG21	1:A:586:PHE:CG	2.56	0.40
1:A:144:ASN:H	1:A:144:ASN:ND2	2.20	0.40
1:B:299:LYS:HD2	1:B:299:LYS:HA	1.88	0.40
1:A:285:GLU:C	1:A:287:GLU:N	2.73	0.40

There are no symmetry-related clashes.

5.3 Torsion angles [\(i\)](#)

5.3.1 Protein backbone [\(i\)](#)

In the following table, the Percentiles column shows the percent Ramachandran outliers of the chain as a percentile score with respect to all X-ray entries followed by that with respect to entries of similar resolution.

The Analysed column shows the number of residues for which the backbone conformation was analysed, and the total number of residues.

Mol	Chain	Analysed	Favoured	Allowed	Outliers	Percentiles	
1	A	541/608 (89%)	503 (93%)	36 (7%)	2 (0%)	34	57
1	B	536/608 (88%)	490 (91%)	42 (8%)	4 (1%)	22	43
All	All	1077/1216 (89%)	993 (92%)	78 (7%)	6 (1%)	25	47

All (6) Ramachandran outliers are listed below:

Mol	Chain	Res	Type
1	A	430	TYR
1	B	49	LYS
1	B	430	TYR
1	A	25	GLU
1	B	309	PRO
1	B	146	VAL

5.3.2 Protein sidechains [i](#)

In the following table, the Percentiles column shows the percent sidechain outliers of the chain as a percentile score with respect to all X-ray entries followed by that with respect to entries of similar resolution.

The Analysed column shows the number of residues for which the sidechain conformation was analysed, and the total number of residues.

Mol	Chain	Analysed	Rotameric	Outliers	Percentiles	
1	A	510/570 (90%)	502 (98%)	8 (2%)	62	82
1	B	505/570 (89%)	496 (98%)	9 (2%)	59	80
All	All	1015/1140 (89%)	998 (98%)	17 (2%)	60	81

All (17) residues with a non-rotameric sidechain are listed below:

Mol	Chain	Res	Type
1	A	28	LYS
1	A	106	ARG
1	A	124	ASN
1	A	144	ASN
1	A	284	ASP
1	A	288	ASP
1	A	304	LYS
1	A	310	ASN
1	B	50	CYS
1	B	66	ASN

Continued on next page...

Continued from previous page...

Mol	Chain	Res	Type
1	B	122	ARG
1	B	129	ARG
1	B	134	GLU
1	B	135	ASP
1	B	147	GLU
1	B	196	PHE
1	B	346	THR

Some sidechains can be flipped to improve hydrogen bonding and reduce clashes. All (22) such sidechains are listed below:

Mol	Chain	Res	Type
1	A	144	ASN
1	A	157	ASN
1	A	171	GLN
1	A	201	ASN
1	A	294	ASN
1	A	310	ASN
1	A	316	ASN
1	A	394	ASN
1	A	407	ASN
1	A	424	ASN
1	B	4	GLN
1	B	24	ASN
1	B	66	ASN
1	B	99	GLN
1	B	310	ASN
1	B	313	GLN
1	B	316	ASN
1	B	394	ASN
1	B	424	ASN
1	B	530	HIS
1	B	554	ASN
1	B	582	ASN

5.3.3 RNA [i](#)

There are no RNA molecules in this entry.

5.4 Non-standard residues in protein, DNA, RNA chains [i](#)

There are no non-standard protein/DNA/RNA residues in this entry.

5.5 Carbohydrates [i](#)

There are no carbohydrates in this entry.

5.6 Ligand geometry [i](#)

6 ligands are modelled in this entry.

In the following table, the Counts columns list the number of bonds (or angles) for which Mogul statistics could be retrieved, the number of bonds (or angles) that are observed in the model and the number of bonds (or angles) that are defined in the Chemical Component Dictionary. The Link column lists molecule types, if any, to which the group is linked. The Z score for a bond length (or angle) is the number of standard deviations the observed value is removed from the expected value. A bond length (or angle) with $|Z| > 2$ is considered an outlier worth inspection. RMSZ is the root-mean-square of all Z scores of the bond lengths (or angles).

Mol	Type	Chain	Res	Link	Bond lengths			Bond angles		
					Counts	RMSZ	# Z > 2	Counts	RMSZ	# Z > 2
4	PO4	A	801	-	4,4,4	1.76	1 (25%)	6,6,6	0.43	0
2	1CY	A	609	-	15,18,18	3.45	10 (66%)	15,27,27	1.21	1 (6%)
3	NDP	B	710	-	45,52,52	1.49	8 (17%)	53,80,80	1.59	7 (13%)
3	NDP	A	610	-	45,52,52	1.44	6 (13%)	53,80,80	1.69	9 (16%)
4	PO4	A	802	-	4,4,4	1.75	1 (25%)	6,6,6	0.43	0
2	1CY	B	709	-	15,18,18	3.40	10 (66%)	15,27,27	1.51	2 (13%)

In the following table, the Chirals column lists the number of chiral outliers, the number of chiral centers analysed, the number of these observed in the model and the number defined in the Chemical Component Dictionary. Similar counts are reported in the Torsion and Rings columns. '-' means no outliers of that kind were identified.

Mol	Type	Chain	Res	Link	Chirals	Torsions	Rings
2	1CY	A	609	-	-	0/4/23/23	0/2/2/2
3	NDP	B	710	-	-	4/30/77/77	0/5/5/5
2	1CY	B	709	-	-	0/4/23/23	0/2/2/2
3	NDP	A	610	-	-	2/30/77/77	0/5/5/5

All (36) bond length outliers are listed below:

Mol	Chain	Res	Type	Atoms	Z	Observed(Å)	Ideal(Å)
2	A	609	1CY	C16-C11	6.54	1.52	1.39
2	B	709	1CY	C16-C11	5.95	1.51	1.39
2	A	609	1CY	C15-C14	5.53	1.48	1.38
2	B	709	1CY	C15-C14	5.35	1.48	1.38
3	B	710	NDP	C6N-N1N	4.93	1.49	1.37
2	A	609	1CY	C14-CL17	-4.83	1.64	1.74
3	A	610	NDP	C6N-N1N	4.59	1.48	1.37
2	B	709	1CY	C16-C15	4.48	1.46	1.38
2	A	609	1CY	C12-C11	4.29	1.47	1.39
2	B	709	1CY	C12-C11	4.04	1.47	1.39
2	B	709	1CY	C13-C14	3.97	1.45	1.38
2	A	609	1CY	C2-N3	3.92	1.44	1.36
2	B	709	1CY	C2-N3	3.91	1.44	1.36
2	B	709	1CY	C4-N8	3.59	1.40	1.34
2	A	609	1CY	C13-C14	3.28	1.44	1.38
3	A	610	NDP	C7N-C3N	3.08	1.55	1.48
3	A	610	NDP	C4A-N3A	3.07	1.39	1.35
3	B	710	NDP	C7N-C3N	2.90	1.54	1.48
2	B	709	1CY	C13-C12	2.89	1.44	1.38
2	A	609	1CY	C16-C15	2.88	1.44	1.38
3	B	710	NDP	C4A-N3A	2.86	1.39	1.35
2	A	609	1CY	C2-N7	2.74	1.42	1.34
2	B	709	1CY	C14-CL17	-2.64	1.68	1.74
2	B	709	1CY	C2-N7	2.64	1.41	1.34
2	A	609	1CY	C13-C12	2.63	1.43	1.38
2	A	609	1CY	C4-N8	2.48	1.38	1.34
3	B	710	NDP	C5D-C4D	2.41	1.59	1.51
3	B	710	NDP	C8A-N7A	2.33	1.38	1.34
3	A	610	NDP	O4D-C1D	2.24	1.47	1.42
3	B	710	NDP	O4D-C1D	2.15	1.47	1.42
4	A	802	PO4	P-O4	-2.11	1.48	1.54
4	A	801	PO4	P-O2	-2.09	1.48	1.54
3	A	610	NDP	PA-O2A	-2.08	1.45	1.55
3	B	710	NDP	O4B-C1B	2.05	1.43	1.41
3	A	610	NDP	C5D-C4D	2.03	1.57	1.51
3	B	710	NDP	C1D-N1N	2.01	1.52	1.46

All (19) bond angle outliers are listed below:

Mol	Chain	Res	Type	Atoms	Z	Observed(°)	Ideal(°)
3	B	710	NDP	N3A-C2A-N1A	-6.24	118.93	128.68
3	A	610	NDP	N3A-C2A-N1A	-5.72	119.74	128.68
3	A	610	NDP	C1D-N1N-C2N	-4.61	113.43	121.11

Continued on next page...

Continued from previous page...

Mol	Chain	Res	Type	Atoms	Z	Observed(°)	Ideal(°)
2	B	709	1CY	C10-C6-C9	-4.17	104.75	110.86
2	A	609	1CY	C10-C6-C9	-3.72	105.41	110.86
3	B	710	NDP	C1B-N9A-C4A	-3.71	120.12	126.64
3	B	710	NDP	O4B-C1B-C2B	-3.65	100.26	106.59
3	A	610	NDP	O2B-C2B-C3B	-3.48	99.06	111.68
3	B	710	NDP	O2B-C2B-C3B	-3.22	100.00	111.68
3	A	610	NDP	O4B-C1B-C2B	-3.02	101.35	106.59
3	B	710	NDP	C2A-N1A-C6A	2.96	123.82	118.75
3	A	610	NDP	C1B-N9A-C4A	-2.96	121.45	126.64
3	A	610	NDP	C2A-N1A-C6A	2.93	123.76	118.75
2	B	709	1CY	C16-C11-N5	2.76	123.26	120.08
3	A	610	NDP	C2D-C1D-N1N	2.29	119.03	113.30
3	B	710	NDP	PN-O3-PA	-2.27	125.03	132.83
3	A	610	NDP	PN-O3-PA	-2.22	125.22	132.83
3	A	610	NDP	C3N-C2N-N1N	-2.16	120.01	123.10
3	B	710	NDP	C3N-C2N-N1N	-2.12	120.08	123.10

There are no chirality outliers.

All (6) torsion outliers are listed below:

Mol	Chain	Res	Type	Atoms
3	B	710	NDP	O4D-C1D-N1N-C2N
3	A	610	NDP	O4D-C1D-N1N-C2N
3	B	710	NDP	O4D-C4D-C5D-O5D
3	B	710	NDP	C3D-C4D-C5D-O5D
3	B	710	NDP	C2N-C3N-C7N-N7N
3	A	610	NDP	C2N-C3N-C7N-N7N

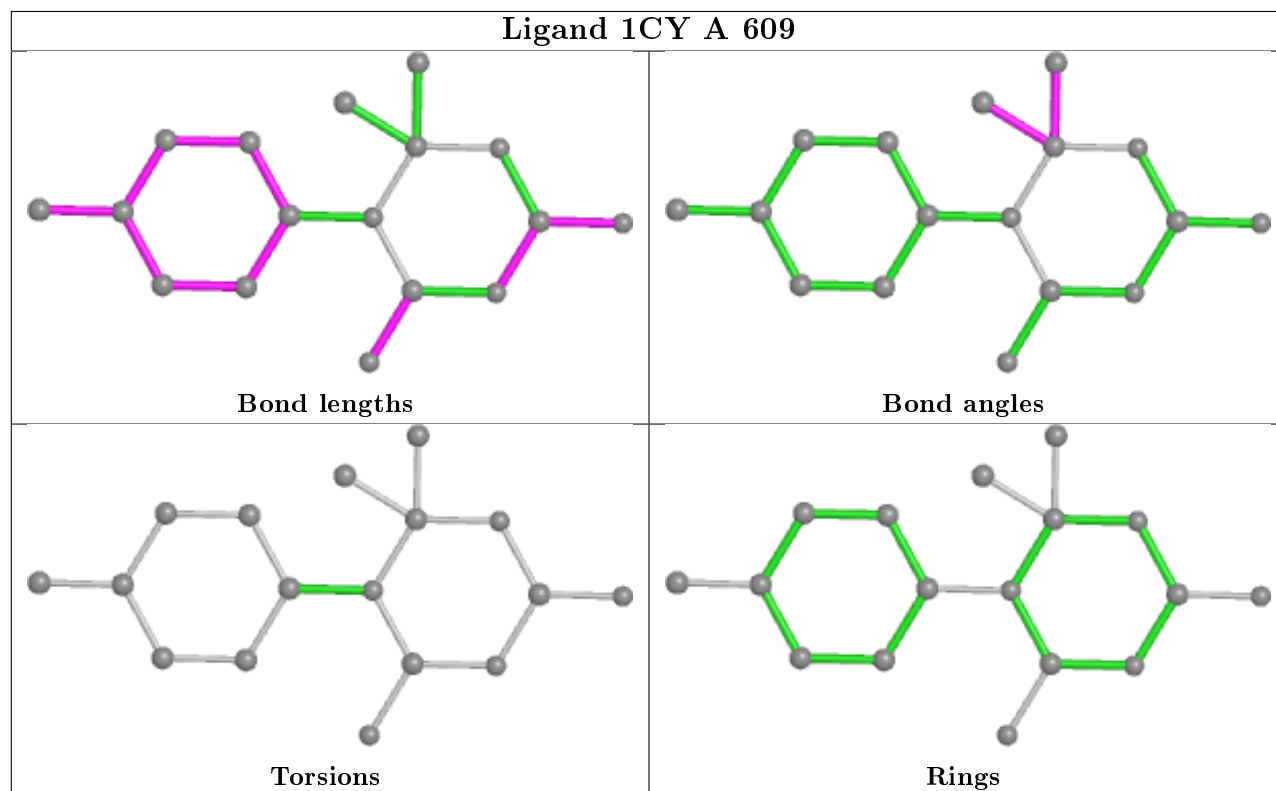
There are no ring outliers.

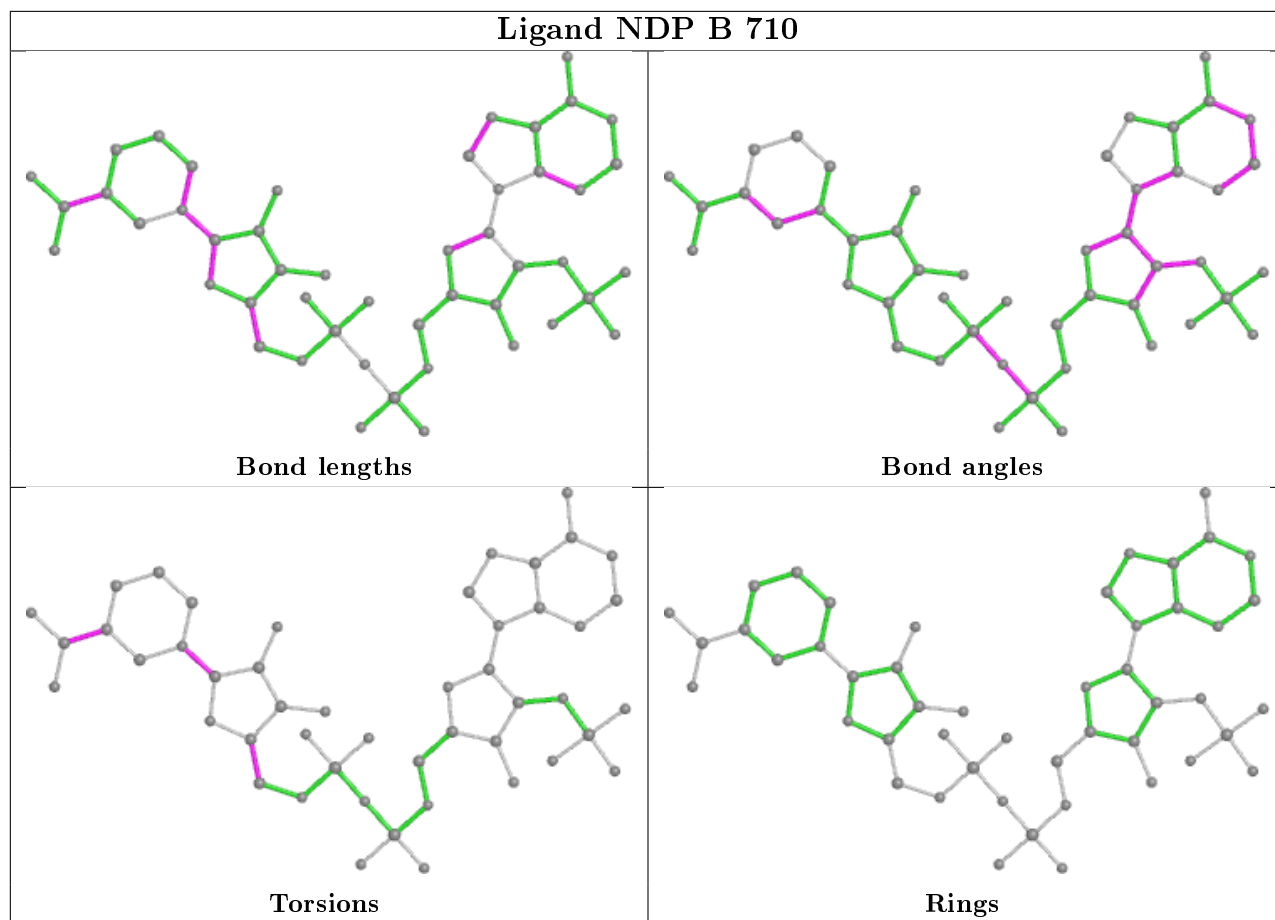
4 monomers are involved in 11 short contacts:

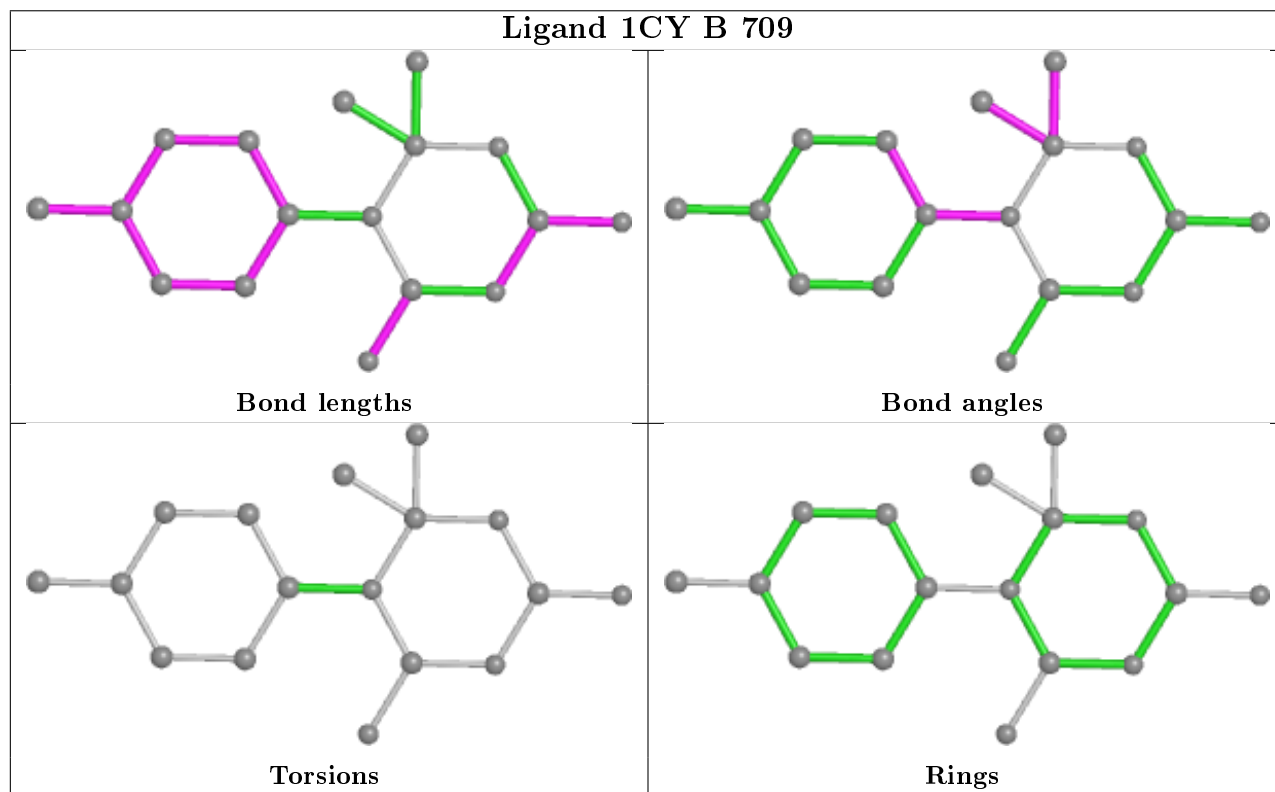
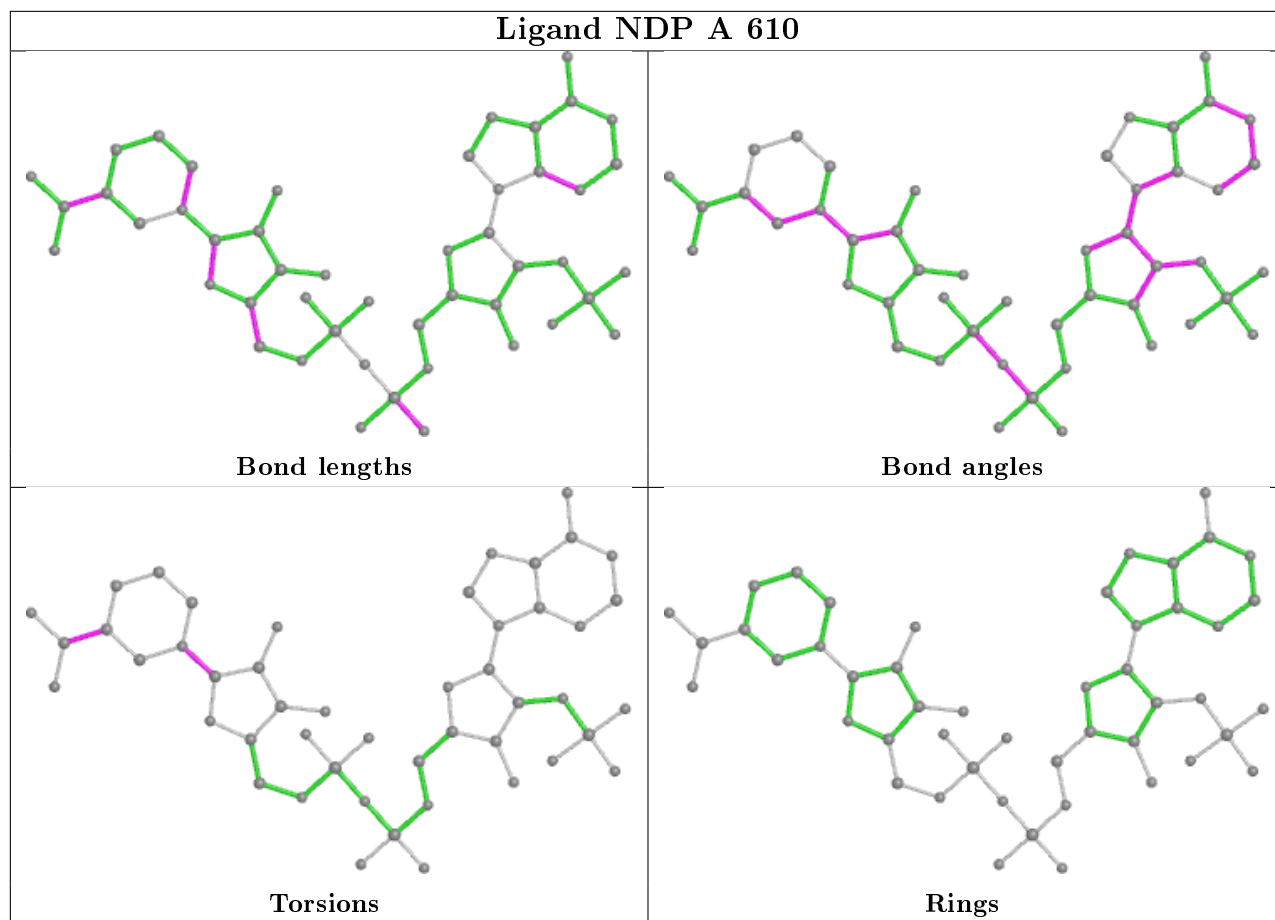
Mol	Chain	Res	Type	Clashes	Symm-Clashes
4	A	801	PO4	1	0
2	A	609	1CY	1	0
3	B	710	NDP	6	0
3	A	610	NDP	3	0

The following is a two-dimensional graphical depiction of Mogul quality analysis of bond lengths, bond angles, torsion angles, and ring geometry for all instances of the Ligand of Interest. In addition, ligands with molecular weight > 250 and outliers as shown on the validation Tables will also be included. For torsion angles, if less than 5% of the Mogul distribution of torsion angles is within 10 degrees of the torsion angle in question, then that torsion angle is considered an outlier.

Any bond that is central to one or more torsion angles identified as an outlier by Mogul will be highlighted in the graph. For rings, the root-mean-square deviation (RMSD) between the ring in question and similar rings identified by Mogul is calculated over all ring torsion angles. If the average RMSD is greater than 60 degrees and the minimal RMSD between the ring in question and any Mogul-identified rings is also greater than 60 degrees, then that ring is considered an outlier. The outliers are highlighted in purple. The color gray indicates Mogul did not find sufficient equivalents in the CSD to analyse the geometry.







5.7 Other polymers [i](#)

There are no such residues in this entry.

5.8 Polymer linkage issues [i](#)

There are no chain breaks in this entry.

6 Fit of model and data

6.1 Protein, DNA and RNA chains

In the following table, the column labelled ‘#RSRZ> 2’ contains the number (and percentage) of RSRZ outliers, followed by percent RSRZ outliers for the chain as percentile scores relative to all X-ray entries and entries of similar resolution. The OWAB column contains the minimum, median, 95th percentile and maximum values of the occupancy-weighted average B-factor per residue. The column labelled ‘Q< 0.9’ lists the number of (and percentage) of residues with an average occupancy less than 0.9.

Mol	Chain	Analysed	<RSRZ>	#RSRZ>2	OWAB(Å ²)	Q<0.9
1	A	547/608 (89%)	0.11	43 (7%) 12 9	23, 42, 90, 91	0
1	B	542/608 (89%)	0.49	65 (11%) 4 2	22, 48, 91, 91	0
All	All	1089/1216 (89%)	0.30	108 (9%) 7 5	22, 44, 91, 91	0

All (108) RSRZ outliers are listed below:

Mol	Chain	Res	Type	RSRZ
1	B	27	LYS	10.9
1	B	26	GLY	10.3
1	B	607	ALA	9.1
1	A	305	ASN	8.9
1	A	608	ALA	8.5
1	A	283	ASP	8.4
1	A	2	MET	7.8
1	B	2	MET	7.8
1	B	307	ILE	7.8
1	B	1	MET	7.6
1	A	1	MET	7.4
1	A	284	ASP	7.0
1	B	608	ALA	6.7
1	A	607	ALA	6.6
1	A	24	ASN	6.1
1	B	230	ASN	6.1
1	A	23	LYS	5.8
1	A	27	LYS	5.8
1	B	3	GLU	5.7
1	A	346	THR	5.6
1	B	75	TYR	5.5
1	B	606	MET	5.5
1	A	26	GLY	5.5
1	B	283	ASP	5.4

Continued on next page...

Continued from previous page...

Mol	Chain	Res	Type	RSRZ
1	B	29	ASN	5.4
1	A	307	ILE	5.3
1	A	25	GLU	5.3
1	B	28	LYS	5.1
1	B	299	LYS	5.1
1	A	286	GLU	5.0
1	B	300	GLU	4.9
1	B	25	GLU	4.9
1	A	85	THR	4.8
1	B	24	ASN	4.7
1	B	4	GLN	4.6
1	A	298	GLU	4.6
1	A	285	GLU	4.5
1	B	131	LEU	4.3
1	B	144	ASN	4.2
1	B	76	LYS	4.2
1	B	136	PHE	4.1
1	A	75	TYR	4.0
1	B	298	GLU	4.0
1	A	22	SER	4.0
1	A	345	ARG	3.9
1	B	304	LYS	3.8
1	A	96	LYS	3.8
1	A	231	ASN	3.8
1	B	346	THR	3.7
1	A	299	LYS	3.7
1	A	606	MET	3.7
1	B	605	ASP	3.6
1	B	80	TYR	3.6
1	B	74	LYS	3.6
1	A	3	GLU	3.6
1	B	45	VAL	3.5
1	B	138	GLU	3.4
1	A	82	ASN	3.4
1	A	84	GLU	3.4
1	A	28	LYS	3.3
1	A	306	SER	3.3
1	B	139	ASP	3.2
1	A	300	GLU	3.2
1	B	128	SER	3.2
1	B	130	THR	3.2
1	B	73	LEU	3.2

Continued on next page...

Continued from previous page...

Mol	Chain	Res	Type	RSRZ
1	B	116	PHE	3.2
1	A	347	GLY	3.1
1	B	67	GLU	3.1
1	B	231	ASN	3.1
1	B	134	GLU	3.0
1	B	305	ASN	3.0
1	B	135	ASP	3.0
1	B	302	LYS	2.9
1	A	29	ASN	2.9
1	B	306	SER	2.9
1	B	132	LYS	2.9
1	A	230	ASN	2.9
1	B	23	LYS	2.8
1	B	159	TYR	2.8
1	A	287	GLU	2.7
1	B	121	ASN	2.7
1	B	66	ASN	2.7
1	B	109	TRP	2.6
1	A	97	LYS	2.6
1	A	302	LYS	2.6
1	B	98	LEU	2.6
1	B	97	LYS	2.5
1	B	165	GLY	2.5
1	B	123	ILE	2.5
1	B	119	LEU	2.4
1	A	297	LYS	2.4
1	A	70	TYR	2.4
1	B	71	GLU	2.3
1	B	345	ARG	2.3
1	A	67	GLU	2.2
1	B	140	VAL	2.2
1	B	20	VAL	2.2
1	A	308	HIS	2.2
1	A	310	ASN	2.2
1	B	301	GLU	2.1
1	B	286	GLU	2.1
1	B	308	HIS	2.1
1	B	49	LYS	2.1
1	B	22	SER	2.0
1	B	191	TYR	2.0
1	A	130	THR	2.0
1	B	69	LYS	2.0

6.2 Non-standard residues in protein, DNA, RNA chains [i](#)

There are no non-standard protein/DNA/RNA residues in this entry.

6.3 Carbohydrates [i](#)

There are no carbohydrates in this entry.

6.4 Ligands [i](#)

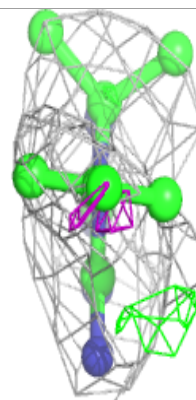
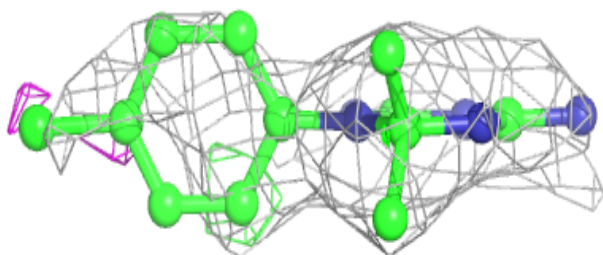
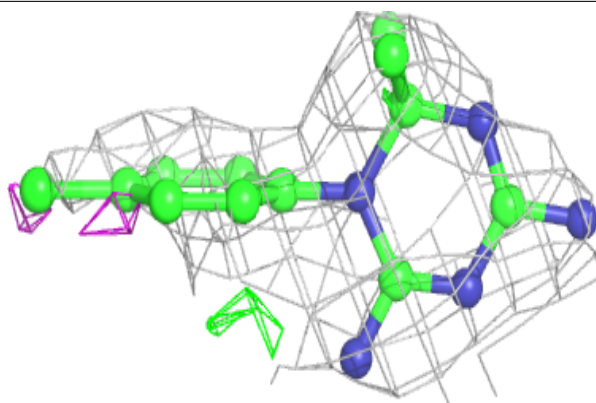
In the following table, the Atoms column lists the number of modelled atoms in the group and the number defined in the chemical component dictionary. The B-factors column lists the minimum, median, 95th percentile and maximum values of B factors of atoms in the group. The column labelled 'Q< 0.9' lists the number of atoms with occupancy less than 0.9.

Mol	Type	Chain	Res	Atoms	RSCC	RSR	B-factors(Å ²)	Q<0.9
2	1CY	B	709	17/17	0.76	0.34	83,84,89,90	0
3	NDP	B	710	48/48	0.85	0.27	88,90,90,90	0
4	PO4	A	802	5/5	0.94	0.20	63,65,66,67	0
3	NDP	A	610	48/48	0.95	0.15	47,53,58,60	0
4	PO4	A	801	5/5	0.96	0.16	77,78,78,79	0
2	1CY	A	609	17/17	0.96	0.20	27,31,38,44	0

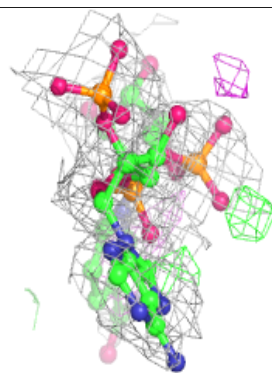
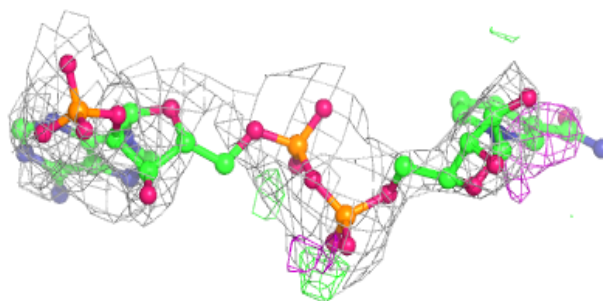
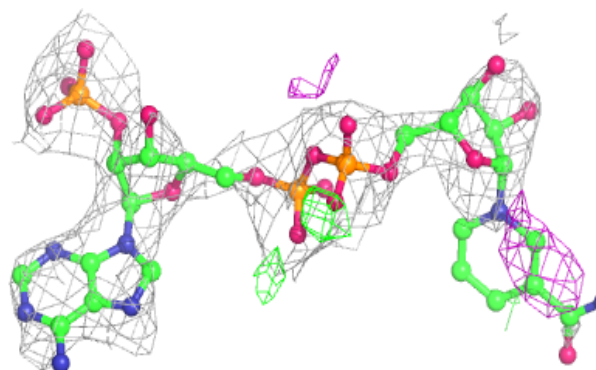
The following is a graphical depiction of the model fit to experimental electron density of all instances of the Ligand of Interest. In addition, ligands with molecular weight > 250 and outliers as shown on the geometry validation Tables will also be included. Each fit is shown from different orientation to approximate a three-dimensional view.

Electron density around 1CY B 709:

$2mF_o-DF_c$ (at 0.7 rmsd) in gray
 mF_o-DF_c (at 3 rmsd) in purple (negative)
and green (positive)

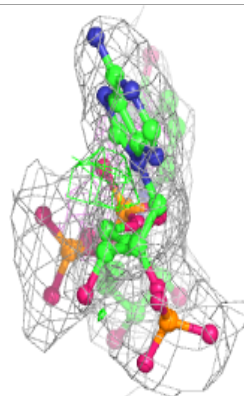
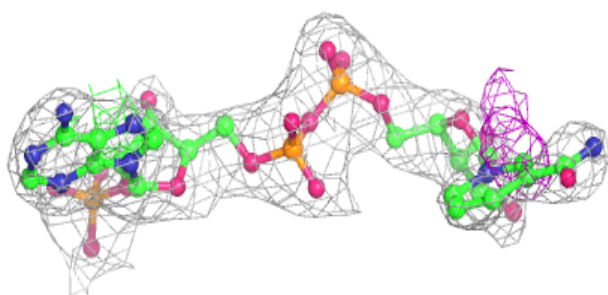
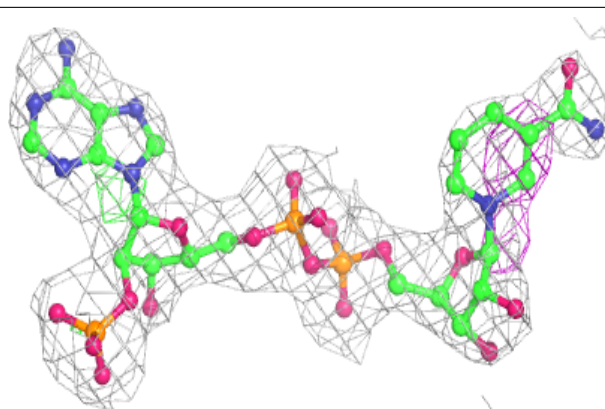
**Electron density around NDP B 710:**

$2mF_o-DF_c$ (at 0.7 rmsd) in gray
 mF_o-DF_c (at 3 rmsd) in purple (negative)
and green (positive)

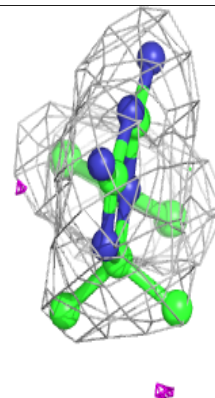
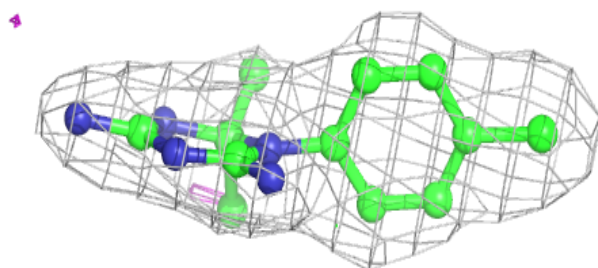
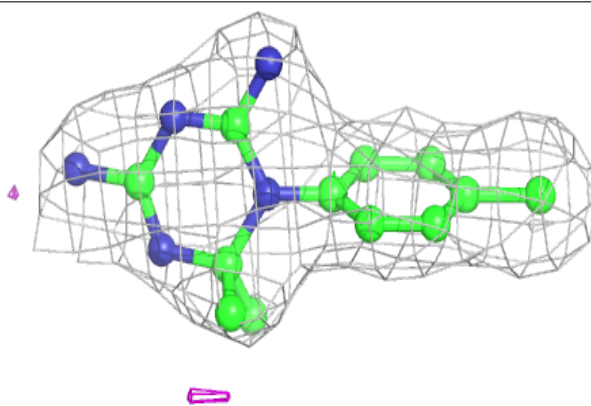


Electron density around NDP A 610:

$2mF_o-DF_c$ (at 0.7 rmsd) in gray
 mF_o-DF_c (at 3 rmsd) in purple (negative)
and green (positive)

**Electron density around 1CY A 609:**

$2mF_o-DF_c$ (at 0.7 rmsd) in gray
 mF_o-DF_c (at 3 rmsd) in purple (negative)
and green (positive)



6.5 Other polymers

There are no such residues in this entry.