



# Full wwPDB X-ray Structure Validation Report ⓘ

Jan 2, 2024 – 02:11 pm GMT

PDB ID : 4UHO  
Title : Characterization of a Novel Transaminase from Pseudomonas sp. Strain AAC  
Authors : Wilding, M.; Peat, T.S.; Newman, J.; Scott, C.  
Deposited on : 2015-03-25  
Resolution : 1.24 Å(reported)

This is a Full wwPDB X-ray Structure Validation Report for a publicly released PDB entry.

We welcome your comments at [validation@mail.wwpdb.org](mailto:validation@mail.wwpdb.org)

A user guide is available at

<https://www.wwpdb.org/validation/2017/XrayValidationReportHelp>

with specific help available everywhere you see the ⓘ symbol.

The types of validation reports are described at

<http://www.wwpdb.org/validation/2017/FAQs#types>.

---

The following versions of software and data (see [references ⓘ](#)) were used in the production of this report:

MolProbity : 4.02b-467  
Mogul : 1.8.4, CSD as541be (2020)  
Xtriage (Phenix) : 1.13  
EDS : 2.36  
Percentile statistics : 20191225.v01 (using entries in the PDB archive December 25th 2019)  
Refmac : 5.8.0158  
CCP4 : 7.0.044 (Gargrove)  
Ideal geometry (proteins) : Engh & Huber (2001)  
Ideal geometry (DNA, RNA) : Parkinson et al. (1996)  
Validation Pipeline (wwPDB-VP) : 2.36

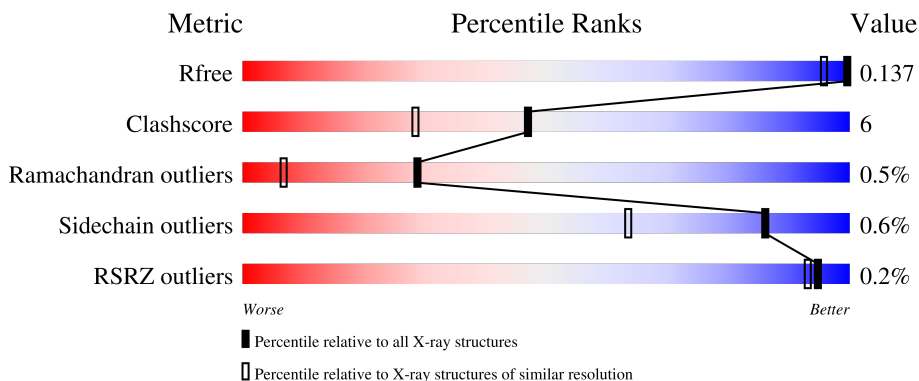
# 1 Overall quality at a glance

The following experimental techniques were used to determine the structure:

*X-RAY DIFFRACTION*


The reported resolution of this entry is 1.24 Å.

Percentile scores (ranging between 0-100) for global validation metrics of the entry are shown in the following graphic. The table shows the number of entries on which the scores are based.



Metric	Whole archive (#Entries)	Similar resolution (#Entries, resolution range(Å))
$R_{free}$	130704	2024 (1.28-1.20)
Clashscore	141614	1007 (1.26-1.22)
Ramachandran outliers	138981	2053 (1.28-1.20)
Sidechain outliers	138945	2051 (1.28-1.20)
RSRZ outliers	127900	1987 (1.28-1.20)

The table below summarises the geometric issues observed across the polymeric chains and their fit to the electron density. The red, orange, yellow and green segments of the lower bar indicate the fraction of residues that contain outliers for  $\geq 3$ , 2, 1 and 0 types of geometric quality criteria respectively. A grey segment represents the fraction of residues that are not modelled. The numeric value for each fraction is indicated below the corresponding segment, with a dot representing fractions  $\leq 5\%$ . The upper red bar (where present) indicates the fraction of residues that have poor fit to the electron density. The numeric value is given above the bar.

Mol	Chain	Length	Quality of chain
1	A	468	 87% 6% 7%

The following table lists non-polymeric compounds, carbohydrate monomers and non-standard residues in protein, DNA, RNA chains that are outliers for geometric or electron-density-fit criteria:

Mol	Type	Chain	Res	Chirality	Geometry	Clashes	Electron density
2	UNL	A	1463	-	-	X	-

*Continued on next page...*

*Continued from previous page...*

Mol	Type	Chain	Res	Chirality	Geometry	Clashes	Electron density
6	PLP	A	1460	-	-	X	-

## 2 Entry composition

There are 9 unique types of molecules in this entry. The entry contains 4382 atoms, of which 0 are hydrogens and 0 are deuteriums.

In the tables below, the ZeroOcc column contains the number of atoms modelled with zero occupancy, the AltConf column contains the number of residues with at least one atom in alternate conformation and the Trace column contains the number of residues modelled with at most 2 atoms.

- Molecule 1 is a protein called OMEGA AMINO ACID-PYRUVATE AMINOTRANSFERASE.

Mol	Chain	Residues	Atoms					ZeroOcc	AltConf	Trace
			Total	C	N	O	S			
1	A	435	3679	2329	643	689	18	0	44	0

There are 20 discrepancies between the modelled and reference sequences:

Chain	Residue	Modelled	Actual	Comment	Reference
A	-19	MET	-	expression tag	UNP A0A081YAY5
A	-18	GLY	-	expression tag	UNP A0A081YAY5
A	-17	SER	-	expression tag	UNP A0A081YAY5
A	-16	SER	-	expression tag	UNP A0A081YAY5
A	-15	HIS	-	expression tag	UNP A0A081YAY5
A	-14	HIS	-	expression tag	UNP A0A081YAY5
A	-13	HIS	-	expression tag	UNP A0A081YAY5
A	-12	HIS	-	expression tag	UNP A0A081YAY5
A	-11	HIS	-	expression tag	UNP A0A081YAY5
A	-10	HIS	-	expression tag	UNP A0A081YAY5
A	-9	SER	-	expression tag	UNP A0A081YAY5
A	-8	SER	-	expression tag	UNP A0A081YAY5
A	-7	GLY	-	expression tag	UNP A0A081YAY5
A	-6	LEU	-	expression tag	UNP A0A081YAY5
A	-5	VAL	-	expression tag	UNP A0A081YAY5
A	-4	PRO	-	expression tag	UNP A0A081YAY5
A	-3	ARG	-	expression tag	UNP A0A081YAY5
A	-2	GLY	-	expression tag	UNP A0A081YAY5
A	-1	SER	-	expression tag	UNP A0A081YAY5
A	0	HIS	-	expression tag	UNP A0A081YAY5

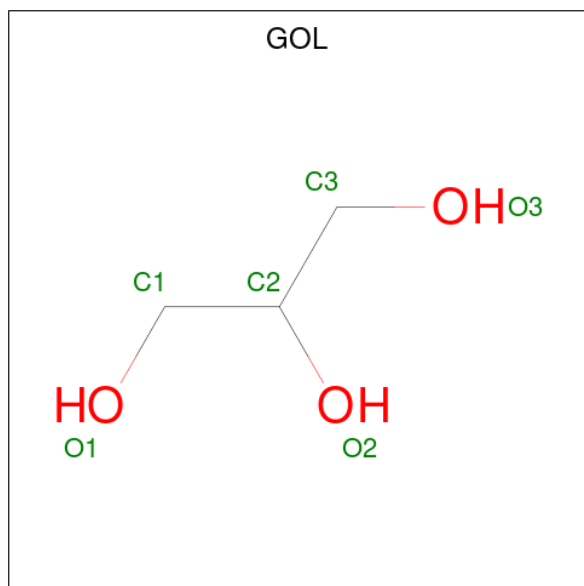
- Molecule 2 is UNKNOWN LIGAND (three-letter code: UNL) (formula: ).

Mol	Chain	Residues	Atoms				ZeroOcc	AltConf
			Total	C	N	O		
2	A	1	9	4	2	3	0	0

- Molecule 3 is MAGNESIUM ION (three-letter code: MG) (formula: Mg).

Mol	Chain	Residues	Atoms		ZeroOcc	AltConf
3	A	2	Total	Mg	0	0
			2	2		

- Molecule 4 is GLYCEROL (three-letter code: GOL) (formula: C<sub>3</sub>H<sub>8</sub>O<sub>3</sub>).



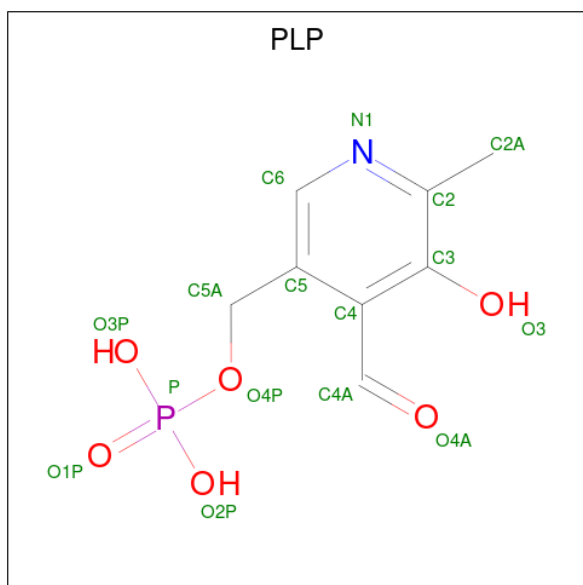
Mol	Chain	Residues	Atoms			ZeroOcc	AltConf
4	A	1	Total	C	O	0	0
			6	3	3		
4	A	1	Total	C	O	0	0
			6	3	3		
4	A	1	Total	C	O	0	0
			6	3	3		
4	A	1	Total	C	O	0	0
			6	3	3		

- Molecule 5 is 1,2-ETHANEDIOL (three-letter code: EDO) (formula: C<sub>2</sub>H<sub>6</sub>O<sub>2</sub>).



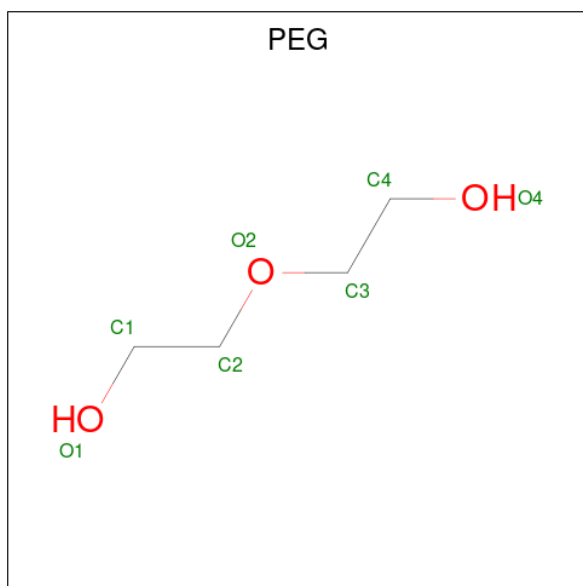
Mol	Chain	Residues	Atoms		ZeroOcc	AltConf
5	A	1	Total	C O	0	0
			4	2 2		
5	A	1	Total	C O	0	0
			4	2 2		
5	A	1	Total	C O	0	0
			4	2 2		
5	A	1	Total	C O	0	0
			4	2 2		

- Molecule 6 is PYRIDOXAL-5'-PHOSPHATE (three-letter code: PLP) (formula:  $C_8H_{10}NO_6P$ ).



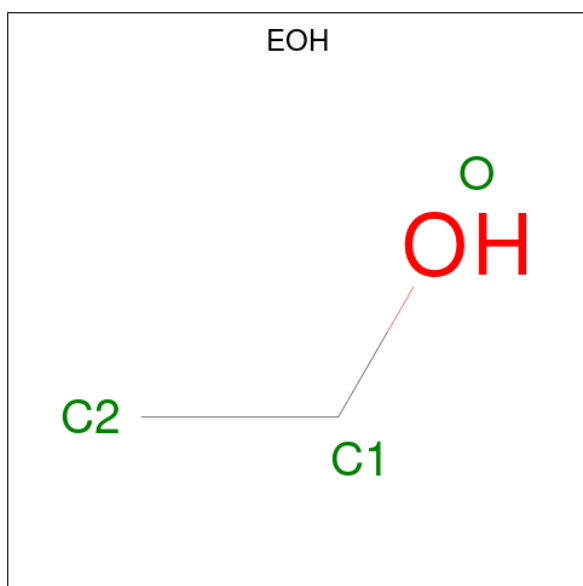
Mol	Chain	Residues	Atoms					ZeroOcc	AltConf
			Total	C	N	O	P		
6	A	1	16	8	1	6	1	0	0

- Molecule 7 is DI(HYDROXYETHYL)ETHER (three-letter code: PEG) (formula:  $C_4H_{10}O_3$ ).



Mol	Chain	Residues	Atoms			ZeroOcc	AltConf
			Total	C	O		
7	A	1	7	4	3	0	0

- Molecule 8 is ETHANOL (three-letter code: EOH) (formula:  $C_2H_6O$ ).



Mol	Chain	Residues	Atoms			ZeroOcc	AltConf
8	A	1	Total	C	O	0	0
			3	2	1		

- Molecule 9 is water.

Mol	Chain	Residues	Atoms		ZeroOcc	AltConf
9	A	620	Total	O	0	0
			620	620		

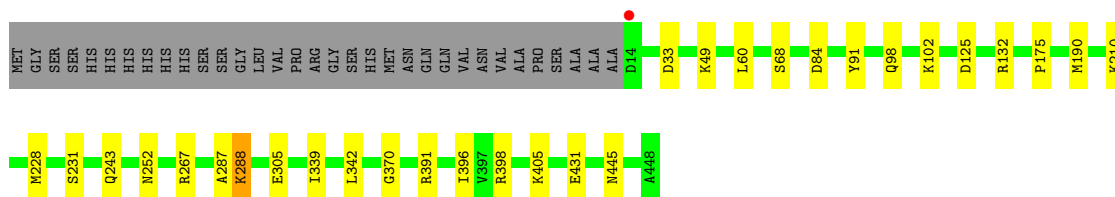


### 3 Residue-property plots [i](#)

These plots are drawn for all protein, RNA, DNA and oligosaccharide chains in the entry. The first graphic for a chain summarises the proportions of the various outlier classes displayed in the second graphic. The second graphic shows the sequence view annotated by issues in geometry and electron density. Residues are color-coded according to the number of geometric quality criteria for which they contain at least one outlier: green = 0, yellow = 1, orange = 2 and red = 3 or more. A red dot above a residue indicates a poor fit to the electron density ( $RSRZ > 2$ ). Stretches of 2 or more consecutive residues without any outlier are shown as a green connector. Residues present in the sample, but not in the model, are shown in grey.

- Molecule 1: OMEGA AMINO ACID-PYRUVATE AMINOTRANSFERASE

Chain A:  87% 6% 7%



## 4 Data and refinement statistics

Property	Value	Source
Space group	I 2 2 2	Depositor
Cell constants a, b, c, $\alpha$ , $\beta$ , $\gamma$	62.96Å 120.80Å 134.17Å 90.00° 90.00° 90.00°	Depositor
Resolution (Å)	89.77 – 1.24 44.89 – 1.24	Depositor EDS
% Data completeness (in resolution range)	99.9 (89.77-1.24) 99.9 (44.89-1.24)	Depositor EDS
$R_{merge}$	0.08	Depositor
$R_{sym}$	(Not available)	Depositor
$\langle I/\sigma(I) \rangle$ <sup>1</sup>	2.56 (at 1.24Å)	Xtrriage
Refinement program	REFMAC 5.8.0107	Depositor
R, $R_{free}$	0.105 , 0.123 0.122 , 0.137	Depositor DCC
$R_{free}$ test set	7188 reflections (4.97%)	wwPDB-VP
Wilson B-factor (Å <sup>2</sup> )	8.8	Xtrriage
Anisotropy	0.198	Xtrriage
Bulk solvent $k_{sol}$ (e/Å <sup>3</sup> ), $B_{sol}$ (Å <sup>2</sup> )	0.34 , 42.9	EDS
L-test for twinning <sup>2</sup>	$\langle  L  \rangle = 0.48$ , $\langle L^2 \rangle = 0.31$	Xtrriage
Estimated twinning fraction	No twinning to report.	Xtrriage
$F_o, F_c$ correlation	0.98	EDS
Total number of atoms	4382	wwPDB-VP
Average B, all atoms (Å <sup>2</sup> )	12.0	wwPDB-VP

Xtrriage's analysis on translational NCS is as follows: *The largest off-origin peak in the Patterson function is 5.68% of the height of the origin peak. No significant pseudotranslation is detected.*

<sup>1</sup>Intensities estimated from amplitudes.

<sup>2</sup>Theoretical values of  $\langle |L| \rangle$ ,  $\langle L^2 \rangle$  for acentric reflections are 0.5, 0.333 respectively for untwinned datasets, and 0.375, 0.2 for perfectly twinned datasets.

## 5 Model quality [i](#)

### 5.1 Standard geometry [i](#)

Bond lengths and bond angles in the following residue types are not validated in this section: EDO, UNL, PLP, MG, GOL, PEG, EOH

The Z score for a bond length (or angle) is the number of standard deviations the observed value is removed from the expected value. A bond length (or angle) with  $|Z| > 5$  is considered an outlier worth inspection. RMSZ is the root-mean-square of all Z scores of the bond lengths (or angles).

Mol	Chain	Bond lengths		Bond angles	
		RMSZ	# Z  >5	RMSZ	# Z  >5
1	A	0.49	0/3756	0.79	10/5070 (0.2%)

There are no bond length outliers.

All (10) bond angle outliers are listed below:

Mol	Chain	Res	Type	Atoms	Z	Observed(°)	Ideal(°)
1	A	190	MET	CG-SD-CE	-8.39	86.77	100.20
1	A	391[A]	ARG	NE-CZ-NH2	-8.27	116.17	120.30
1	A	391[B]	ARG	NE-CZ-NH2	-8.27	116.17	120.30
1	A	391[A]	ARG	NE-CZ-NH1	7.09	123.84	120.30
1	A	391[B]	ARG	NE-CZ-NH1	7.09	123.84	120.30
1	A	132	ARG	NE-CZ-NH2	-6.04	117.28	120.30
1	A	267	ARG	NE-CZ-NH2	-5.35	117.62	120.30
1	A	398	ARG	NE-CZ-NH1	5.19	122.90	120.30
1	A	398	ARG	NE-CZ-NH2	-5.17	117.72	120.30
1	A	84	ASP	CB-CG-OD1	5.16	122.94	118.30

There are no chirality outliers.

There are no planarity outliers.

### 5.2 Too-close contacts [i](#)

In the following table, the Non-H and H(model) columns list the number of non-hydrogen atoms and hydrogen atoms in the chain respectively. The H(added) column lists the number of hydrogen atoms added and optimized by MolProbity. The Clashes column lists the number of clashes within the asymmetric unit, whereas Symm-Clashes lists symmetry-related clashes.

Mol	Chain	Non-H	H(model)	H(added)	Clashes	Symm-Clashes
1	A	3679	0	3625	42	1

*Continued on next page...*

*Continued from previous page...*

Mol	Chain	Non-H	H(model)	H(added)	Clashes	Symm-Clashes
2	A	9	0	0	2	0
3	A	2	0	0	0	0
4	A	30	0	40	6	0
5	A	16	0	24	2	0
6	A	16	0	7	8	0
7	A	7	0	10	2	0
8	A	3	0	6	1	0
9	A	620	0	0	25	2
All	All	4382	0	3712	47	2

The all-atom clashscore is defined as the number of clashes found per 1000 atoms (including hydrogen atoms). The all-atom clashscore for this structure is 6.

All (47) close contacts within the same asymmetric unit are listed below, sorted by their clash magnitude.

Atom-1	Atom-2	Interatomic distance (Å)	Clash overlap (Å)
1:A:288[B]:LYS:NZ	6:A:1460:PLP:C4A	1.83	1.41
1:A:288[B]:LYS:HZ1	6:A:1460:PLP:C4A	1.41	1.28
1:A:288[B]:LYS:NZ	6:A:1460:PLP:H4A	1.53	1.13
1:A:33[A]:ASP:OD1	9:A:2054:HOH:O	1.74	1.05
2:A:1463:UNL:O4	9:A:2617:HOH:O	1.82	0.95
1:A:288[B]:LYS:HZ2	6:A:1460:PLP:H4A	1.17	0.93
1:A:370:GLY:O	7:A:1461:PEG:H31	1.68	0.93
1:A:243[A]:GLN:OE1	9:A:2407:HOH:O	1.87	0.91
1:A:49[A]:LYS:HE2	9:A:2082:HOH:O	1.70	0.91
5:A:1456:EDO:O2	9:A:2171:HOH:O	1.88	0.90
1:A:243[A]:GLN:NE2	9:A:2410:HOH:O	2.06	0.88
1:A:68[B]:SER:OG	9:A:2137:HOH:O	1.79	0.81
1:A:405[B]:LYS:HD3	9:A:2558:HOH:O	1.81	0.79
1:A:305[A]:GLU:HG2	4:A:1452:GOL:O1	1.86	0.76
1:A:243[A]:GLN:OE1	9:A:2408:HOH:O	2.06	0.73
1:A:68[B]:SER:CB	9:A:2137:HOH:O	2.37	0.70
1:A:49[A]:LYS:CE	9:A:2082:HOH:O	2.32	0.68
1:A:288[B]:LYS:NZ	6:A:1460:PLP:C4	2.58	0.64
1:A:288[B]:LYS:HZ2	6:A:1460:PLP:C4A	1.81	0.63
1:A:405[B]:LYS:CD	9:A:2558:HOH:O	2.45	0.63
4:A:1455:GOL:O2	9:A:2608:HOH:O	2.15	0.63
1:A:68[A]:SER:HB3	9:A:2137:HOH:O	1.97	0.63
1:A:102[A]:LYS:HB2	1:A:102[A]:LYS:NZ	2.14	0.61
1:A:370:GLY:HA2	7:A:1461:PEG:H32	1.82	0.61
1:A:288[B]:LYS:HZ3	6:A:1460:PLP:C4A	2.04	0.59

*Continued on next page...*

Continued from previous page...

Atom-1	Atom-2	Interatomic distance (Å)	Clash overlap (Å)
1:A:98[B]:GLN:HG3	9:A:2189:HOH:O	2.04	0.57
1:A:210[B]:LYS:HE3	9:A:2378:HOH:O	2.07	0.54
2:A:1463:UNL:C1	9:A:2617:HOH:O	2.48	0.54
1:A:445[B]:ASN:ND2	9:A:2597:HOH:O	2.41	0.53
1:A:405[B]:LYS:HG3	9:A:2548:HOH:O	2.07	0.53
1:A:102[A]:LYS:HB2	1:A:102[A]:LYS:HZ2	1.77	0.50
1:A:68[A]:SER:CB	9:A:2137:HOH:O	2.56	0.50
1:A:102[B]:LYS:HE3	1:A:339:ILE:HG23	1.95	0.48
1:A:175[B]:PRO:HG2	9:A:2320:HOH:O	2.13	0.48
1:A:431[A]:GLU:HG3	9:A:2576:HOH:O	2.12	0.48
1:A:252:ASN:HD21	4:A:1455:GOL:C1	2.28	0.47
1:A:49[A]:LYS:HD3	9:A:2082:HOH:O	2.15	0.47
1:A:231[B]:SER:OG	4:A:1454:GOL:C3	2.63	0.47
1:A:305[A]:GLU:CG	4:A:1452:GOL:O1	2.59	0.46
1:A:49[A]:LYS:CD	9:A:2082:HOH:O	2.61	0.46
1:A:102[A]:LYS:HD3	1:A:342:LEU:CB	2.50	0.42
1:A:102[A]:LYS:NZ	1:A:102[A]:LYS:CB	2.80	0.41
1:A:252:ASN:HD21	4:A:1455:GOL:H11	1.85	0.41
1:A:288[B]:LYS:HZ3	6:A:1460:PLP:C4	2.30	0.41
1:A:60[B]:LEU:HD12	1:A:60[B]:LEU:HA	1.98	0.40
1:A:396:ILE:HG23	5:A:1458:EDO:H22	2.03	0.40
8:A:1462:EOH:H23	9:A:2411:HOH:O	2.22	0.40

All (2) symmetry-related close contacts are listed below. The label for Atom-2 includes the symmetry operator and encoded unit-cell translations to be applied.

Atom-1	Atom-2	Interatomic distance (Å)	Clash overlap (Å)
1:A:91[B]:TYR:OH	9:A:2552:HOH:O[3_559]	1.83	0.37
9:A:2495:HOH:O	9:A:2599:HOH:O[8_439]	1.98	0.22

## 5.3 Torsion angles [i](#)

### 5.3.1 Protein backbone [i](#)

In the following table, the Percentiles column shows the percent Ramachandran outliers of the chain as a percentile score with respect to all X-ray entries followed by that with respect to entries of similar resolution.

The Analysed column shows the number of residues for which the backbone conformation was analysed, and the total number of residues.

Mol	Chain	Analysed	Favoured	Allowed	Outliers	Percentiles
1	A	478/468 (102%)	459 (96%)	16 (3%)	3 (1%)	25 5

All (3) Ramachandran outliers are listed below:

Mol	Chain	Res	Type
1	A	288[A]	LYS
1	A	288[B]	LYS
1	A	287	ALA

### 5.3.2 Protein sidechains [i](#)

In the following table, the Percentiles column shows the percent sidechain outliers of the chain as a percentile score with respect to all X-ray entries followed by that with respect to entries of similar resolution.

The Analysed column shows the number of residues for which the sidechain conformation was analysed, and the total number of residues.

Mol	Chain	Analysed	Rotameric	Outliers	Percentiles
1	A	380/361 (105%)	378 (100%)	2 (0%)	88 68

All (2) residues with a non-rotameric sidechain are listed below:

Mol	Chain	Res	Type
1	A	125	ASP
1	A	228	MET

Sometimes sidechains can be flipped to improve hydrogen bonding and reduce clashes. There are no such sidechains identified.

### 5.3.3 RNA [i](#)

There are no RNA molecules in this entry.

## 5.4 Non-standard residues in protein, DNA, RNA chains [i](#)

There are no non-standard protein/DNA/RNA residues in this entry.

## 5.5 Carbohydrates [i](#)

There are no monosaccharides in this entry.

## 5.6 Ligand geometry [i](#)

Of 15 ligands modelled in this entry, 1 is unknown and 2 are monoatomic - leaving 12 for Mogul analysis.

In the following table, the Counts columns list the number of bonds (or angles) for which Mogul statistics could be retrieved, the number of bonds (or angles) that are observed in the model and the number of bonds (or angles) that are defined in the Chemical Component Dictionary. The Link column lists molecule types, if any, to which the group is linked. The Z score for a bond length (or angle) is the number of standard deviations the observed value is removed from the expected value. A bond length (or angle) with  $|Z| > 2$  is considered an outlier worth inspection. RMSZ is the root-mean-square of all Z scores of the bond lengths (or angles).

Mol	Type	Chain	Res	Link	Bond lengths			Bond angles		
					Counts	RMSZ	# Z  > 2	Counts	RMSZ	# Z  > 2
4	GOL	A	1454	-	5,5,5	0.31	0	5,5,5	0.55	0
5	EDO	A	1458	-	3,3,3	0.69	0	2,2,2	1.29	0
4	GOL	A	1452	-	5,5,5	0.41	0	5,5,5	0.35	0
4	GOL	A	1453	-	5,5,5	0.36	0	5,5,5	0.90	0
4	GOL	A	1455	-	5,5,5	0.48	0	5,5,5	1.83	1 (20%)
5	EDO	A	1457	-	3,3,3	0.85	0	2,2,2	0.28	0
7	PEG	A	1461	-	6,6,6	0.31	0	5,5,5	1.00	0
8	EOH	A	1462	-	2,2,2	0.54	0	1,1,1	0.08	0
4	GOL	A	1451	-	5,5,5	0.21	0	5,5,5	0.21	0
5	EDO	A	1459	-	3,3,3	0.67	0	2,2,2	0.44	0
5	EDO	A	1456	-	3,3,3	0.55	0	2,2,2	0.92	0
6	PLP	A	1460	-	16,16,16	2.41	7 (43%)	20,23,23	2.14	6 (30%)

In the following table, the Chirals column lists the number of chiral outliers, the number of chiral centers analysed, the number of these observed in the model and the number defined in the Chemical Component Dictionary. Similar counts are reported in the Torsion and Rings columns. '-' means no outliers of that kind were identified.

Mol	Type	Chain	Res	Link	Chirals	Torsions	Rings
4	GOL	A	1454	-	-	0/4/4/4	-
5	EDO	A	1458	-	-	1/1/1/1	-
4	GOL	A	1452	-	-	0/4/4/4	-
4	GOL	A	1453	-	-	4/4/4/4	-
4	GOL	A	1455	-	-	4/4/4/4	-
5	EDO	A	1457	-	-	1/1/1/1	-

*Continued on next page...*

*Continued from previous page...*

Mol	Type	Chain	Res	Link	Chirals	Torsions	Rings
7	PEG	A	1461	-	-	3/4/4/4	-
4	GOL	A	1451	-	-	0/4/4/4	-
5	EDO	A	1459	-	-	1/1/1/1	-
5	EDO	A	1456	-	-	1/1/1/1	-
6	PLP	A	1460	-	-	2/8/8/8	0/1/1/1

All (7) bond length outliers are listed below:

Mol	Chain	Res	Type	Atoms	Z	Observed(Å)	Ideal(Å)
6	A	1460	PLP	P-O3P	-4.42	1.37	1.54
6	A	1460	PLP	C4-C5	4.32	1.47	1.42
6	A	1460	PLP	C6-N1	3.82	1.42	1.34
6	A	1460	PLP	O3-C3	-3.73	1.28	1.37
6	A	1460	PLP	C4-C3	2.95	1.45	1.40
6	A	1460	PLP	C2-N1	-2.28	1.29	1.33
6	A	1460	PLP	C3-C2	2.12	1.43	1.40

All (7) bond angle outliers are listed below:

Mol	Chain	Res	Type	Atoms	Z	Observed(°)	Ideal(°)
6	A	1460	PLP	O3P-P-O4P	5.51	121.41	106.73
6	A	1460	PLP	O3P-P-O1P	-3.82	95.73	110.68
4	A	1455	GOL	O1-C1-C2	3.38	126.41	110.20
6	A	1460	PLP	C2A-C2-C3	-3.13	117.02	120.89
6	A	1460	PLP	C2A-C2-N1	2.82	123.18	117.67
6	A	1460	PLP	C3-C4-C5	-2.50	116.34	118.26
6	A	1460	PLP	C6-N1-C2	2.21	123.27	119.17

There are no chirality outliers.

All (17) torsion outliers are listed below:

Mol	Chain	Res	Type	Atoms
4	A	1455	GOL	O1-C1-C2-C3
4	A	1455	GOL	C1-C2-C3-O3
4	A	1455	GOL	O2-C2-C3-O3
6	A	1460	PLP	C5-C4-C4A-O4A
4	A	1455	GOL	O1-C1-C2-O2
7	A	1461	PEG	O1-C1-C2-O2
4	A	1453	GOL	C1-C2-C3-O3
6	A	1460	PLP	C3-C4-C4A-O4A
5	A	1456	EDO	O1-C1-C2-O2

*Continued on next page...*



*Continued from previous page...*

Mol	Chain	Res	Type	Atoms
5	A	1457	EDO	O1-C1-C2-O2
4	A	1453	GOL	O2-C2-C3-O3
5	A	1458	EDO	O1-C1-C2-O2
5	A	1459	EDO	O1-C1-C2-O2
7	A	1461	PEG	C4-C3-O2-C2
4	A	1453	GOL	O1-C1-C2-C3
4	A	1453	GOL	O1-C1-C2-O2
7	A	1461	PEG	C1-C2-O2-C3

There are no ring outliers.

8 monomers are involved in 19 short contacts:

Mol	Chain	Res	Type	Clashes	Symm-Clashes
4	A	1454	GOL	1	0
5	A	1458	EDO	1	0
4	A	1452	GOL	2	0
4	A	1455	GOL	3	0
7	A	1461	PEG	2	0
8	A	1462	EOH	1	0
5	A	1456	EDO	1	0
6	A	1460	PLP	8	0

## 5.7 Other polymers [i](#)

There are no such residues in this entry.

## 5.8 Polymer linkage issues [i](#)

There are no chain breaks in this entry.

## 6 Fit of model and data [i](#)

### 6.1 Protein, DNA and RNA chains [i](#)

In the following table, the column labelled '#RSRZ > 2' contains the number (and percentage) of RSRZ outliers, followed by percent RSRZ outliers for the chain as percentile scores relative to all X-ray entries and entries of similar resolution. The OWAB column contains the minimum, median, 95<sup>th</sup> percentile and maximum values of the occupancy-weighted average B-factor per residue. The column labelled 'Q < 0.9' lists the number of (and percentage) of residues with an average occupancy less than 0.9.

Mol	Chain	Analysed	<RSRZ>	#RSRZ>2	OWAB(Å <sup>2</sup> )	Q<0.9
1	A	435/468 (92%)	-0.47	1 (0%) <b>95</b> <b>93</b>	5, 9, 16, 24	1 (0%)

All (1) RSRZ outliers are listed below:

Mol	Chain	Res	Type	RSRZ
1	A	14	ASP	2.0

### 6.2 Non-standard residues in protein, DNA, RNA chains [i](#)

There are no non-standard protein/DNA/RNA residues in this entry.

### 6.3 Carbohydrates [i](#)

There are no monosaccharides in this entry.

### 6.4 Ligands [i](#)

In the following table, the Atoms column lists the number of modelled atoms in the group and the number defined in the chemical component dictionary. The B-factors column lists the minimum, median, 95<sup>th</sup> percentile and maximum values of B factors of atoms in the group. The column labelled 'Q < 0.9' lists the number of atoms with occupancy less than 0.9.

Mol	Type	Chain	Res	Atoms	RSCC	RSR	B-factors(Å <sup>2</sup> )	Q<0.9
4	GOL	A	1455	6/6	0.80	0.25	16,21,28,29	6
7	PEG	A	1461	7/7	0.80	0.27	18,19,21,21	7
2	UNL	A	1463	9/-	0.83	0.18	8,14,20,20	9
5	EDO	A	1457	4/4	0.84	0.17	9,13,14,14	4
4	GOL	A	1452	6/6	0.85	0.21	14,19,19,22	0
4	GOL	A	1453	6/6	0.86	0.22	24,27,29,30	6

*Continued on next page...*

*Continued from previous page...*

Mol	Type	Chain	Res	Atoms	RSCC	RSR	B-factors( $\text{\AA}^2$ )	Q<0.9
5	EDO	A	1458	4/4	0.87	0.18	17,21,29,34	4
5	EDO	A	1459	4/4	0.87	0.20	19,20,23,30	0
4	GOL	A	1454	6/6	0.87	0.17	14,16,17,19	6
8	EOH	A	1462	3/3	0.88	0.17	14,14,15,18	3
6	PLP	A	1460	16/16	0.89	0.16	8,10,12,15	16
4	GOL	A	1451	6/6	0.93	0.17	14,24,28,30	0
5	EDO	A	1456	4/4	0.93	0.13	14,16,16,22	4
3	MG	A	1449	1/1	1.00	0.04	5,5,5,5	1
3	MG	A	1450	1/1	1.00	0.10	13,13,13,13	1

## 6.5 Other polymers [i](#)

There are no such residues in this entry.