



Full wwPDB X-ray Structure Validation Report ⓘ

Oct 14, 2023 – 10:49 PM EDT

PDB ID : 7U9V
Title : Integrin α IIB β 3 complex with BMS4-1
Authors : Zhu, J.; Lin, F.-Y.; Zhu, J.; Springer, T.A.
Deposited on : 2022-03-11
Resolution : 2.25 Å(reported)

This is a Full wwPDB X-ray Structure Validation Report for a publicly released PDB entry.

We welcome your comments at validation@mail.wwpdb.org

A user guide is available at

<https://www.wwpdb.org/validation/2017/XrayValidationReportHelp>

with specific help available everywhere you see the ⓘ symbol.

The types of validation reports are described at

<http://www.wwpdb.org/validation/2017/FAQs#types>.

The following versions of software and data (see [references ⓘ](#)) were used in the production of this report:

MolProbity : 4.02b-467
Mogul : 1.8.5 (274361), CSD as541be (2020)
Xtriage (Phenix) : 1.13
EDS : 2.36
buster-report : 1.1.7 (2018)
Percentile statistics : 20191225.v01 (using entries in the PDB archive December 25th 2019)
Refmac : 5.8.0158
CCP4 : 7.0.044 (Gargrove)
Ideal geometry (proteins) : Engh & Huber (2001)
Ideal geometry (DNA, RNA) : Parkinson et al. (1996)
Validation Pipeline (wwPDB-VP) : 2.36

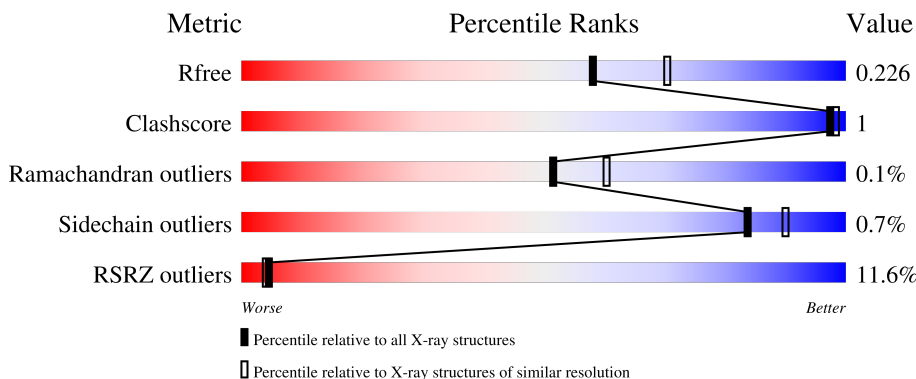
1 Overall quality at a glance

The following experimental techniques were used to determine the structure:

X-RAY DIFFRACTION

The reported resolution of this entry is 2.25 Å.

Percentile scores (ranging between 0-100) for global validation metrics of the entry are shown in the following graphic. The table shows the number of entries on which the scores are based.



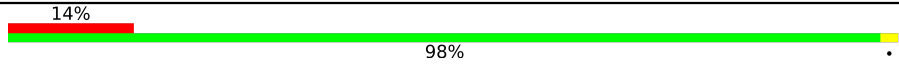
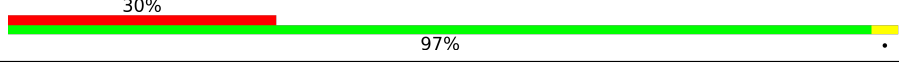
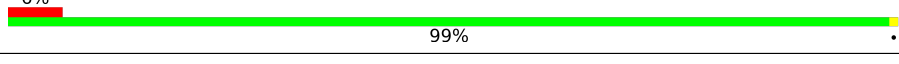
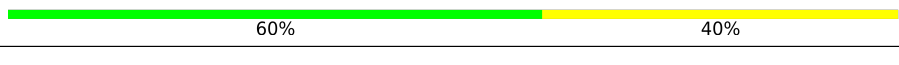
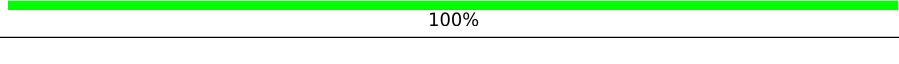

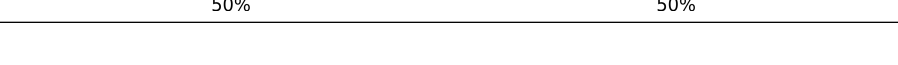
Metric	Whole archive (#Entries)	Similar resolution (#Entries, resolution range(Å))
R_{free}	130704	1377 (2.26-2.26)
Clashscore	141614	1487 (2.26-2.26)
Ramachandran outliers	138981	1449 (2.26-2.26)
Sidechain outliers	138945	1450 (2.26-2.26)
RSRZ outliers	127900	1356 (2.26-2.26)

The table below summarises the geometric issues observed across the polymeric chains and their fit to the electron density. The red, orange, yellow and green segments of the lower bar indicate the fraction of residues that contain outliers for ≥ 3 , 2, 1 and 0 types of geometric quality criteria respectively. A grey segment represents the fraction of residues that are not modelled. The numeric value for each fraction is indicated below the corresponding segment, with a dot representing fractions $\leq 5\%$. The upper red bar (where present) indicates the fraction of residues that have poor fit to the electron density. The numeric value is given above the bar.

Mol	Chain	Length	Quality of chain
1	A	454	
1	C	454	
2	B	471	
2	D	471	
3	E	216	

Continued on next page...

Continued from previous page...

Mol	Chain	Length	Quality of chain
3	H	216	 14% 98%
4	F	214	 30% 97%
4	L	214	 6% 99%
5	G	5	 60% 40%
6	I	2	 100%
6	K	2	 50% 50%
7	J	4	 50% 50%

2 Entry composition

There are 14 unique types of molecules in this entry. The entry contains 22257 atoms, of which 0 are hydrogens and 0 are deuteriums.

In the tables below, the ZeroOcc column contains the number of atoms modelled with zero occupancy, the AltConf column contains the number of residues with at least one atom in alternate conformation and the Trace column contains the number of residues modelled with at most 2 atoms.

- Molecule 1 is a protein called Integrin alpha-IIb.

Mol	Chain	Residues	Atoms					ZeroOcc	AltConf	Trace
			Total	C	N	O	S			
1	A	454	Total	C	N	O	S	0	4	0
			3499	2226	601	664	8			
1	C	453	Total	C	N	O	S	0	4	0
			3502	2224	604	666	8			

- Molecule 2 is a protein called Integrin beta-3.

Mol	Chain	Residues	Atoms					ZeroOcc	AltConf	Trace
			Total	C	N	O	S			
2	B	466	Total	C	N	O	S	4	7	0
			3643	2267	621	721	34			
2	D	471	Total	C	N	O	S	3	1	0
			3634	2265	620	715	34			

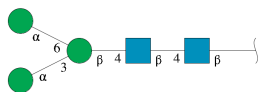
- Molecule 3 is a protein called 10E5 Fab heavy chain.

Mol	Chain	Residues	Atoms					ZeroOcc	AltConf	Trace
			Total	C	N	O	S			
3	E	214	Total	C	N	O	S	0	0	0
			1631	1035	264	326	6			
3	H	216	Total	C	N	O	S	0	0	0
			1642	1041	266	329	6			

- Molecule 4 is a protein called 10E5 light chain.

Mol	Chain	Residues	Atoms					ZeroOcc	AltConf	Trace
			Total	C	N	O	S			
4	F	214	Total	C	N	O	S	0	0	0
			1637	1019	268	341	9			
4	L	214	Total	C	N	O	S	0	0	0
			1637	1019	268	341	9			

- Molecule 5 is an oligosaccharide called alpha-D-mannopyranose-(1-3)-[alpha-D-mannopyranose-(1-6)]beta-D-mannopyranose-(1-4)-2-acetamido-2-deoxy-beta-D-glucopyranose-(1-4)-2-acetamido-2-deoxy-beta-D-glucopyranose.



Mol	Chain	Residues	Atoms				ZeroOcc	AltConf	Trace
			Total	C	N	O			
5	G	5	61	34	2	25	0	0	0

- Molecule 6 is an oligosaccharide called 2-acetamido-2-deoxy-beta-D-glucopyranose-(1-4)-2-acetamido-2-deoxy-beta-D-glucopyranose.



Mol	Chain	Residues	Atoms				ZeroOcc	AltConf	Trace
			Total	C	N	O			
6	I	2	28	16	2	10	0	0	0
6	K	2	28	16	2	10	0	0	0

- Molecule 7 is an oligosaccharide called alpha-D-mannopyranose-(1-3)-beta-D-mannopyranose-(1-4)-2-acetamido-2-deoxy-beta-D-glucopyranose-(1-4)-2-acetamido-2-deoxy-beta-D-glucopyranose.



Mol	Chain	Residues	Atoms				ZeroOcc	AltConf	Trace
			Total	C	N	O			
7	J	4	50	28	2	20	0	0	0

- Molecule 8 is SULFATE ION (three-letter code: SO4) (formula: O₄S).



Mol	Chain	Residues	Atoms			ZeroOcc	AltConf
8	A	1	Total	O	S	0	0
			5	4	1		
8	A	1	Total	O	S	0	0
			5	4	1		
8	A	1	Total	O	S	0	0
			5	4	1		
8	A	1	Total	O	S	0	0
			5	4	1		
8	C	1	Total	O	S	0	0
			5	4	1		
8	C	1	Total	O	S	0	0
			5	4	1		
8	C	1	Total	O	S	0	0
			5	4	1		
8	L	1	Total	O	S	0	0
			5	4	1		

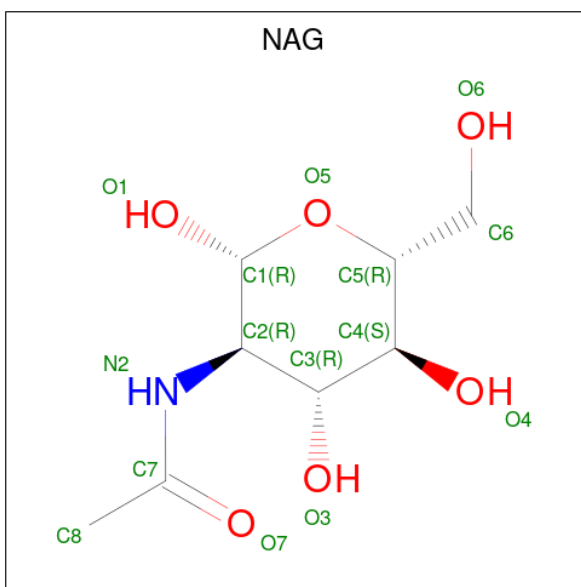
- Molecule 9 is CALCIUM ION (three-letter code: CA) (formula: Ca).

Mol	Chain	Residues	Atoms		ZeroOcc	AltConf
9	A	4	Total	Ca	0	0
			4	4		
9	C	4	Total	Ca	0	0
			4	4		

- Molecule 10 is MANGANESE (II) ION (three-letter code: MN) (formula: Mn).

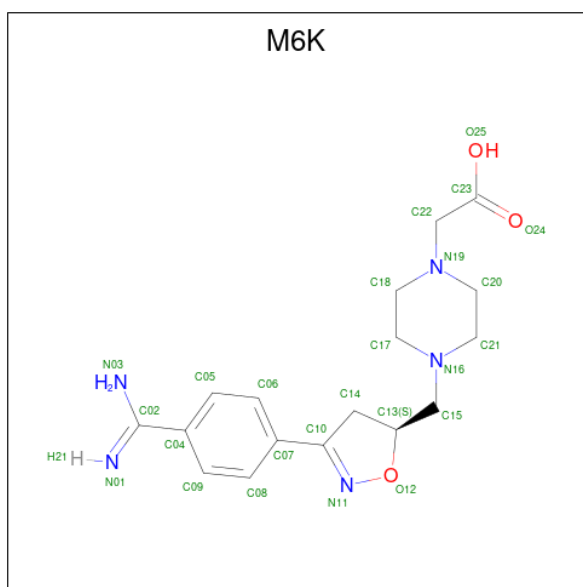
Mol	Chain	Residues	Atoms		ZeroOcc	AltConf
10	B	3	Total	Mn	0	0
			3	3		
10	D	3	Total	Mn	0	0
			3	3		

- Molecule 11 is 2-acetamido-2-deoxy-beta-D-glucopyranose (three-letter code: NAG) (formula: C₈H₁₅NO₆).



Mol	Chain	Residues	Atoms				ZeroOcc	AltConf
11	B	1	Total	C	N	O	0	0
			14	8	1	5		
11	D	1	Total	C	N	O	0	0
			14	8	1	5		

- Molecule 12 is (4-{{[(5S)-3-(4-carbamimidoylphenyl)-4,5-dihydro-1,2-oxazol-5-yl]methyl}}piperazin-1-yl)acetic acid (three-letter code: M6K) (formula: C₁₇H₂₃N₅O₃) (labeled as "Ligand of Interest" by depositor).



Mol	Chain	Residues	Atoms			ZeroOcc	AltConf	
12	B	1	Total	C	N	O	0	0
			25	17	5	3		
12	D	1	Total	C	N	O	0	0
			25	17	5	3		

- Molecule 13 is CHLORIDE ION (three-letter code: CL) (formula: Cl).

Mol	Chain	Residues	Atoms		ZeroOcc	AltConf
13	C	2	Total	Cl	0	0
			2	2		
13	D	1	Total	Cl	0	0
			1	1		

- Molecule 14 is water.

Mol	Chain	Residues	Atoms		ZeroOcc	AltConf
14	A	410	Total	O	0	0
			410	410		
14	B	236	Total	O	0	0
			236	236		
14	C	186	Total	O	0	0
			186	186		
14	D	156	Total	O	0	0
			156	156		
14	E	19	Total	O	0	0
			19	19		

Continued on next page...

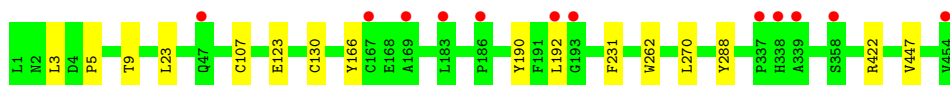
Continued from previous page...

Mol	Chain	Residues	Atoms	ZeroOcc	AltConf
14	F	20	Total O 20 20	0	0
14	H	33	Total O 33 33	0	0
14	L	65	Total O 65 65	0	0

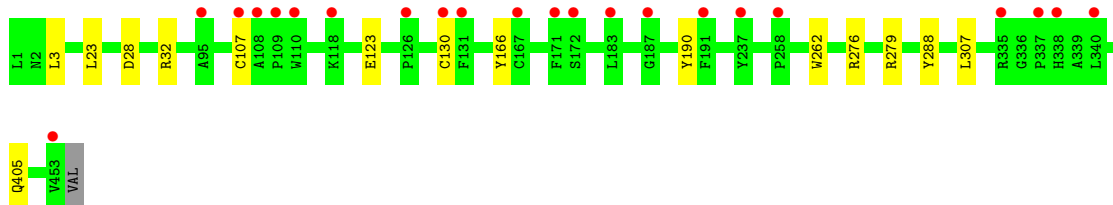
3 Residue-property plots [i](#)

These plots are drawn for all protein, RNA, DNA and oligosaccharide chains in the entry. The first graphic for a chain summarises the proportions of the various outlier classes displayed in the second graphic. The second graphic shows the sequence view annotated by issues in geometry and electron density. Residues are color-coded according to the number of geometric quality criteria for which they contain at least one outlier: green = 0, yellow = 1, orange = 2 and red = 3 or more. A red dot above a residue indicates a poor fit to the electron density ($RSRZ > 2$). Stretches of 2 or more consecutive residues without any outlier are shown as a green connector. Residues present in the sample, but not in the model, are shown in grey.

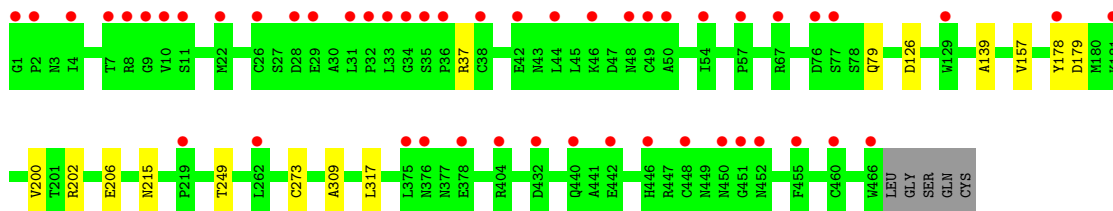
- Molecule 1: Integrin alpha-IIb



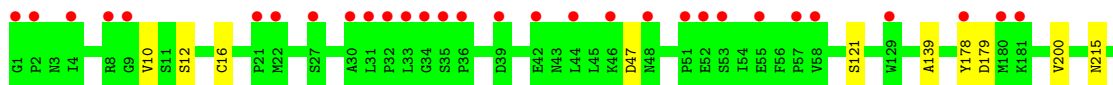
- Molecule 1: Integrin alpha-IIb

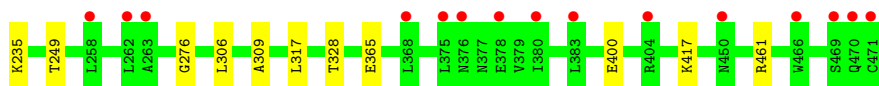


- Molecule 2: Integrin beta-3

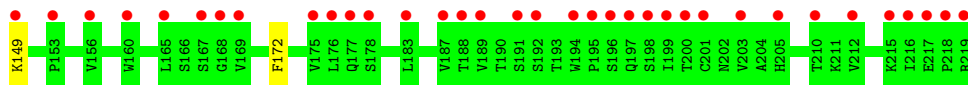


- Molecule 2: Integrin beta-3

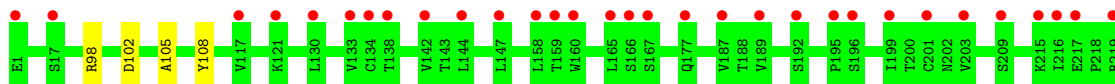




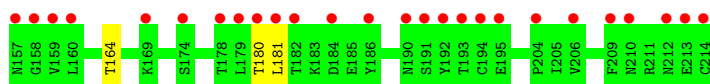
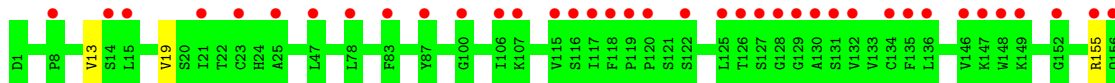
- Molecule 3: 10E5 Fab heavy chain



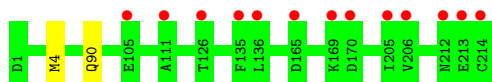
- Molecule 3: 10E5 Fab heavy chain



- Molecule 4: 10E5 light chain



- Molecule 4: 10E5 light chain



- Molecule 5: alpha-D-mannopyranose-(1-3)-[alpha-D-mannopyranose-(1-6)]beta-D-mannopyranose-(1-4)-2-acetamido-2-deoxy-beta-D-glucopyranose-(1-4)-2-acetamido-2-deoxy-beta-D-glucopyranose



- Molecule 6: 2-acetamido-2-deoxy-beta-D-glucopyranose-(1-4)-2-acetamido-2-deoxy-beta-D-glucopyranose

Chain I:  100%

MAG1
MAG2

- Molecule 6: 2-acetamido-2-deoxy-beta-D-glucopyranose-(1-4)-2-acetamido-2-deoxy-beta-D-glucopyranose

Chain K:  50% 50%

MAG1
MAG2

- Molecule 7: alpha-D-mannopyranose-(1-3)-beta-D-mannopyranose-(1-4)-2-acetamido-2-deoxy-beta-D-glucopyranose-(1-4)-2-acetamido-2-deoxy-beta-D-glucopyranose

Chain J:  50% 50%

MAG1
MAG2
BMA3
MAN4

4 Data and refinement statistics

Property	Value	Source
Space group	P 21 21 2	Depositor
Cell constants a, b, c, α , β , γ	257.80Å 143.89Å 104.68Å 90.00° 90.00° 90.00°	Depositor
Resolution (Å)	44.95 – 2.25 44.95 – 2.25	Depositor EDS
% Data completeness (in resolution range)	99.2 (44.95-2.25) 86.6 (44.95-2.25)	Depositor EDS
R_{merge}	0.17	Depositor
R_{sym}	(Not available)	Depositor
$\langle I/\sigma(I) \rangle$ ¹	1.63 (at 2.24Å)	Xtrriage
Refinement program	PHENIX 1.11.1_2575	Depositor
R, R_{free}	0.203 , 0.226 0.203 , 0.226	Depositor DCC
R_{free} test set	1999 reflections (1.10%)	wwPDB-VP
Wilson B-factor (Å ²)	40.3	Xtrriage
Anisotropy	0.505	Xtrriage
Bulk solvent k_{sol} (e/Å ³), B_{sol} (Å ²)	0.31 , 49.2	EDS
L-test for twinning ²	$\langle L \rangle = 0.49$, $\langle L^2 \rangle = 0.32$	Xtrriage
Estimated twinning fraction	No twinning to report.	Xtrriage
F_o, F_c correlation	0.95	EDS
Total number of atoms	22257	wwPDB-VP
Average B, all atoms (Å ²)	77.0	wwPDB-VP

Xtrriage's analysis on translational NCS is as follows: *The largest off-origin peak in the Patterson function is 2.27% of the height of the origin peak. No significant pseudotranslation is detected.*

¹Intensities estimated from amplitudes.

²Theoretical values of $\langle |L| \rangle$, $\langle L^2 \rangle$ for acentric reflections are 0.5, 0.333 respectively for untwinned datasets, and 0.375, 0.2 for perfectly twinned datasets.

5 Model quality [i](#)

5.1 Standard geometry [i](#)

Bond lengths and bond angles in the following residue types are not validated in this section: CL, CA, M6K, MAN, MN, SO4, NAG, BMA

The Z score for a bond length (or angle) is the number of standard deviations the observed value is removed from the expected value. A bond length (or angle) with $|Z| > 5$ is considered an outlier worth inspection. RMSZ is the root-mean-square of all Z scores of the bond lengths (or angles).

Mol	Chain	Bond lengths		Bond angles	
		RMSZ	# Z >5	RMSZ	# Z >5
1	A	0.26	0/3608	0.47	0/4918
1	C	0.25	0/3605	0.45	0/4912
2	B	0.25	0/3713	0.44	0/5034
2	D	0.24	0/3706	0.43	0/5026
3	E	0.24	0/1673	0.44	0/2290
3	H	0.24	0/1684	0.44	0/2305
4	F	0.24	0/1673	0.43	0/2269
4	L	0.24	0/1673	0.44	0/2269
All	All	0.25	0/21335	0.45	0/29023

There are no bond length outliers.

There are no bond angle outliers.

There are no chirality outliers.

There are no planarity outliers.

5.2 Too-close contacts [i](#)

In the following table, the Non-H and H(model) columns list the number of non-hydrogen atoms and hydrogen atoms in the chain respectively. The H(added) column lists the number of hydrogen atoms added and optimized by MolProbity. The Clashes column lists the number of clashes within the asymmetric unit, whereas Symm-Clashes lists symmetry-related clashes.

Mol	Chain	Non-H	H(model)	H(added)	Clashes	Symm-Clashes
1	A	3499	0	3345	6	0
1	C	3502	0	3334	5	0
2	B	3643	0	3553	7	0
2	D	3634	0	3550	11	0
3	E	1631	0	1590	2	0

Continued on next page...

Continued from previous page...

Mol	Chain	Non-H	H(model)	H(added)	Clashes	Symm-Clashes
3	H	1642	0	1600	2	0
4	F	1637	0	1553	4	0
4	L	1637	0	1553	1	0
5	G	61	0	52	0	0
6	I	28	0	25	0	0
6	K	28	0	25	1	0
7	J	50	0	43	0	0
8	A	20	0	0	0	0
8	C	20	0	0	0	0
8	L	5	0	0	0	0
9	A	4	0	0	0	0
9	C	4	0	0	0	0
10	B	3	0	0	0	0
10	D	3	0	0	0	0
11	B	14	0	13	0	0
11	D	14	0	13	0	0
12	B	25	0	0	0	0
12	D	25	0	0	1	0
13	C	2	0	0	0	0
13	D	1	0	0	0	0
14	A	410	0	0	1	0
14	B	236	0	0	1	0
14	C	186	0	0	0	0
14	D	156	0	0	1	0
14	E	19	0	0	0	0
14	F	20	0	0	1	0
14	H	33	0	0	0	0
14	L	65	0	0	0	0
All	All	22257	0	20249	34	0

The all-atom clashscore is defined as the number of clashes found per 1000 atoms (including hydrogen atoms). The all-atom clashscore for this structure is 1.

All (34) close contacts within the same asymmetric unit are listed below, sorted by their clash magnitude.

Atom-1	Atom-2	Interatomic distance (Å)	Clash overlap (Å)
2:B:273:CYS:SG	14:B:2290:HOH:O	2.55	0.64
2:B:126[A]:ASP:OD1	2:B:126[A]:ASP:N	2.39	0.55
4:F:155:ARG:NH1	14:F:302:HOH:O	2.40	0.54
1:C:3:LEU:O	1:C:405:GLN:NE2	2.32	0.52
2:B:202:ARG:NH2	2:B:206:GLU:OE2	2.42	0.52

Continued on next page...

Continued from previous page...

Atom-1	Atom-2	Interatomic distance (Å)	Clash overlap (Å)
1:A:9:THR:HB	1:A:447:VAL:HB	1.92	0.50
1:A:262:TRP:HB3	2:B:317:LEU:HD13	1.94	0.49
1:C:107:CYS:HA	1:C:130:CYS:HA	1.94	0.48
2:B:139:ALA:HB2	2:B:200:VAL:HG11	1.94	0.48
1:A:422:ARG:NH1	14:A:613:HOH:O	2.46	0.46
2:D:417:LYS:NZ	14:D:2104:HOH:O	2.49	0.45
2:D:139:ALA:HB2	2:D:200:VAL:HG11	1.99	0.44
2:D:10:VAL:HG21	2:D:16:CYS:HB2	2.00	0.44
4:L:4:MET:HE2	4:L:90:GLN:HB3	2.00	0.43
2:D:400:GLU:HB2	6:K:1:NAG:H83	2.00	0.43
1:A:107:CYS:HA	1:A:130:CYS:HA	1.99	0.43
3:H:98:ARG:HG3	3:H:108:TYR:HB2	2.01	0.43
1:C:262:TRP:HB3	2:D:317:LEU:HD13	2.01	0.42
2:B:249:THR:HA	2:B:309:ALA:O	2.19	0.42
2:D:178:TYR:CG	2:D:179:ASP:N	2.87	0.42
2:D:235:LYS:HE3	2:D:276:GLY:O	2.20	0.42
2:D:306:LEU:HB3	2:D:328:THR:HG22	2.01	0.42
1:A:192:LEU:HD11	1:A:231:PHE:CD1	2.55	0.42
2:D:121:SER:HB2	12:D:2006:M6K:O24	2.19	0.41
1:C:276:ARG:HD2	1:C:279:ARG:HB2	2.03	0.41
4:F:13:VAL:HG11	4:F:19:VAL:HG11	2.02	0.41
3:E:172:PHE:CD2	4:F:164:THR:HG23	2.56	0.41
1:A:3:LEU:O	1:A:5:PRO:HD3	2.21	0.41
3:H:102:ASP:HB3	3:H:105:ALA:HB2	2.03	0.41
2:B:178:TYR:CG	2:B:179:ASP:N	2.89	0.41
1:C:28:ASP:OD1	1:C:32:ARG:N	2.54	0.40
2:D:249:THR:HA	2:D:309:ALA:O	2.21	0.40
2:D:12:SER:HB3	2:D:461:ARG:HD3	2.03	0.40
3:E:149:LYS:NZ	4:F:180:THR:HG21	2.36	0.40

There are no symmetry-related clashes.

5.3 Torsion angles [i](#)

5.3.1 Protein backbone [i](#)

In the following table, the Percentiles column shows the percent Ramachandran outliers of the chain as a percentile score with respect to all X-ray entries followed by that with respect to entries of similar resolution.

The Analysed column shows the number of residues for which the backbone conformation was analysed, and the total number of residues.

Mol	Chain	Analysed	Favoured	Allowed	Outliers	Percentiles	
1	A	456/454 (100%)	444 (97%)	11 (2%)	1 (0%)	47	55
1	C	455/454 (100%)	440 (97%)	14 (3%)	1 (0%)	47	55
2	B	471/471 (100%)	458 (97%)	12 (2%)	1 (0%)	47	55
2	D	470/471 (100%)	453 (96%)	17 (4%)	0	100	100
3	E	210/216 (97%)	194 (92%)	16 (8%)	0	100	100
3	H	212/216 (98%)	199 (94%)	13 (6%)	0	100	100
4	F	212/214 (99%)	201 (95%)	11 (5%)	0	100	100
4	L	212/214 (99%)	205 (97%)	7 (3%)	0	100	100
All	All	2698/2710 (100%)	2594 (96%)	101 (4%)	3 (0%)	51	60

All (3) Ramachandran outliers are listed below:

Mol	Chain	Res	Type
1	A	123	GLU
1	C	123	GLU
2	B	157	VAL

5.3.2 Protein sidechains [i](#)

In the following table, the Percentiles column shows the percent sidechain outliers of the chain as a percentile score with respect to all X-ray entries followed by that with respect to entries of similar resolution.

The Analysed column shows the number of residues for which the sidechain conformation was analysed, and the total number of residues.

Mol	Chain	Analysed	Rotameric	Outliers	Percentiles	
1	A	366/362 (101%)	361 (99%)	5 (1%)	67	76
1	C	365/362 (101%)	360 (99%)	5 (1%)	67	76
2	B	419/416 (101%)	416 (99%)	3 (1%)	84	90
2	D	417/416 (100%)	414 (99%)	3 (1%)	84	90
3	E	186/187 (100%)	186 (100%)	0	100	100
3	H	187/187 (100%)	187 (100%)	0	100	100
4	F	188/188 (100%)	187 (100%)	1 (0%)	88	92
4	L	188/188 (100%)	188 (100%)	0	100	100
All	All	2316/2306 (100%)	2299 (99%)	17 (1%)	84	90

All (17) residues with a non-rotameric sidechain are listed below:

Mol	Chain	Res	Type
1	A	23	LEU
1	A	166	TYR
1	A	190	TYR
1	A	270	LEU
1	A	288	TYR
2	B	37	ARG
2	B	79	GLN
2	B	215	ASN
1	C	23	LEU
1	C	166	TYR
1	C	190	TYR
1	C	288	TYR
1	C	307	LEU
2	D	47	ASP
2	D	215	ASN
2	D	365	GLU
4	F	181	LEU

Sometimes sidechains can be flipped to improve hydrogen bonding and reduce clashes. All (1) such sidechains are listed below:

Mol	Chain	Res	Type
2	D	301	GLN

5.3.3 RNA [i](#)

There are no RNA molecules in this entry.

5.4 Non-standard residues in protein, DNA, RNA chains [i](#)

There are no non-standard protein/DNA/RNA residues in this entry.

5.5 Carbohydrates [i](#)

13 monosaccharides are modelled in this entry.

In the following table, the Counts columns list the number of bonds (or angles) for which Mogul statistics could be retrieved, the number of bonds (or angles) that are observed in the model and the number of bonds (or angles) that are defined in the Chemical Component Dictionary. The Link column lists molecule types, if any, to which the group is linked. The Z score for a bond

length (or angle) is the number of standard deviations the observed value is removed from the expected value. A bond length (or angle) with $|Z| > 2$ is considered an outlier worth inspection. RMSZ is the root-mean-square of all Z scores of the bond lengths (or angles).

Mol	Type	Chain	Res	Link	Bond lengths			Bond angles		
					Counts	RMSZ	# Z > 2	Counts	RMSZ	# Z > 2
5	NAG	G	1	5,2	14,14,15	0.32	0	17,19,21	0.52	0
5	NAG	G	2	5	14,14,15	0.15	0	17,19,21	0.45	0
5	BMA	G	3	5	11,11,12	0.82	0	15,15,17	0.84	0
5	MAN	G	4	5	11,11,12	0.62	0	15,15,17	1.07	2 (13%)
5	MAN	G	5	5	11,11,12	0.66	0	15,15,17	1.07	2 (13%)
6	NAG	I	1	6,2	14,14,15	0.32	0	17,19,21	0.37	0
6	NAG	I	2	6	14,14,15	0.35	0	17,19,21	0.39	0
7	NAG	J	1	7,2	14,14,15	0.35	0	17,19,21	0.54	0
7	NAG	J	2	7	14,14,15	0.28	0	17,19,21	0.41	0
7	BMA	J	3	7	11,11,12	1.09	2 (18%)	15,15,17	1.19	1 (6%)
7	MAN	J	4	7	11,11,12	0.76	0	15,15,17	1.12	2 (13%)
6	NAG	K	1	6,2	14,14,15	0.24	0	17,19,21	0.44	0
6	NAG	K	2	6	14,14,15	0.22	0	17,19,21	0.47	0

In the following table, the Chirals column lists the number of chiral outliers, the number of chiral centers analysed, the number of these observed in the model and the number defined in the Chemical Component Dictionary. Similar counts are reported in the Torsion and Rings columns. '-' means no outliers of that kind were identified.

Mol	Type	Chain	Res	Link	Chirals	Torsions	Rings
5	NAG	G	1	5,2	-	0/6/23/26	0/1/1/1
5	NAG	G	2	5	-	2/6/23/26	0/1/1/1
5	BMA	G	3	5	-	0/2/19/22	0/1/1/1
5	MAN	G	4	5	-	2/2/19/22	0/1/1/1
5	MAN	G	5	5	-	1/2/19/22	0/1/1/1
6	NAG	I	1	6,2	-	2/6/23/26	0/1/1/1
6	NAG	I	2	6	-	3/6/23/26	0/1/1/1
7	NAG	J	1	7,2	-	0/6/23/26	0/1/1/1
7	NAG	J	2	7	-	0/6/23/26	0/1/1/1
7	BMA	J	3	7	-	2/2/19/22	0/1/1/1
7	MAN	J	4	7	-	2/2/19/22	0/1/1/1
6	NAG	K	1	6,2	-	0/6/23/26	0/1/1/1
6	NAG	K	2	6	-	2/6/23/26	0/1/1/1

All (2) bond length outliers are listed below:

Mol	Chain	Res	Type	Atoms	Z	Observed(Å)	Ideal(Å)
7	J	3	BMA	C4-C5	2.07	1.57	1.53
7	J	3	BMA	O5-C1	-2.06	1.40	1.43

All (7) bond angle outliers are listed below:

Mol	Chain	Res	Type	Atoms	Z	Observed(°)	Ideal(°)
5	G	4	MAN	C1-O5-C5	2.97	116.22	112.19
5	G	5	MAN	C1-O5-C5	2.89	116.10	112.19
7	J	4	MAN	C1-O5-C5	2.85	116.06	112.19
7	J	3	BMA	C3-C4-C5	2.76	115.17	110.24
7	J	4	MAN	O2-C2-C3	-2.33	105.47	110.14
5	G	4	MAN	O2-C2-C3	-2.22	105.69	110.14
5	G	5	MAN	O2-C2-C3	-2.19	105.75	110.14

There are no chirality outliers.

All (16) torsion outliers are listed below:

Mol	Chain	Res	Type	Atoms
7	J	3	BMA	O5-C5-C6-O6
7	J	3	BMA	C4-C5-C6-O6
7	J	4	MAN	O5-C5-C6-O6
5	G	4	MAN	O5-C5-C6-O6
6	I	2	NAG	C8-C7-N2-C2
6	I	2	NAG	O7-C7-N2-C2
6	K	2	NAG	C8-C7-N2-C2
6	K	2	NAG	O7-C7-N2-C2
6	I	1	NAG	C4-C5-C6-O6
7	J	4	MAN	C4-C5-C6-O6
5	G	4	MAN	C4-C5-C6-O6
5	G	2	NAG	O5-C5-C6-O6
5	G	2	NAG	C4-C5-C6-O6
6	I	1	NAG	O5-C5-C6-O6
5	G	5	MAN	O5-C5-C6-O6
6	I	2	NAG	O5-C5-C6-O6

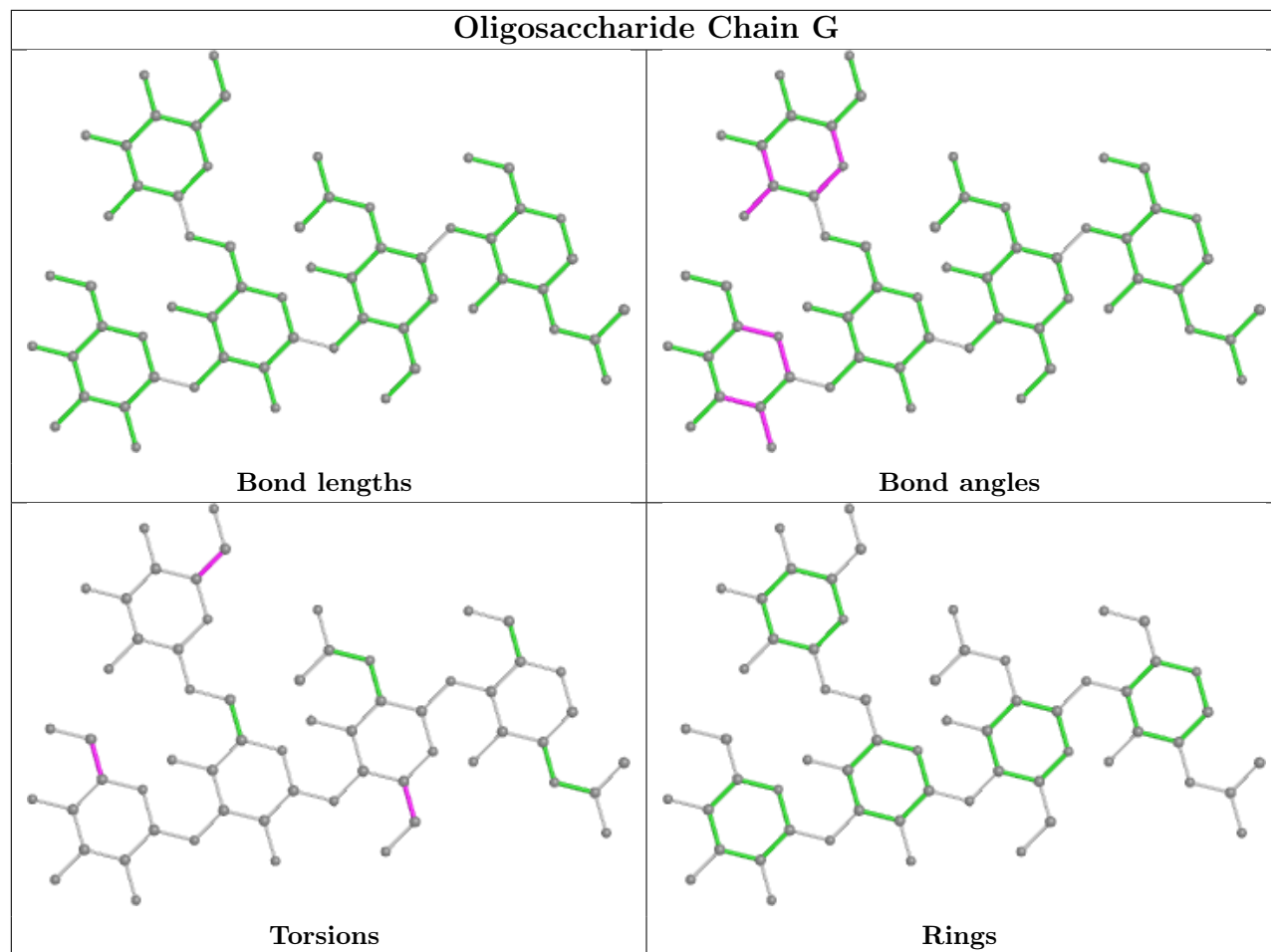
There are no ring outliers.

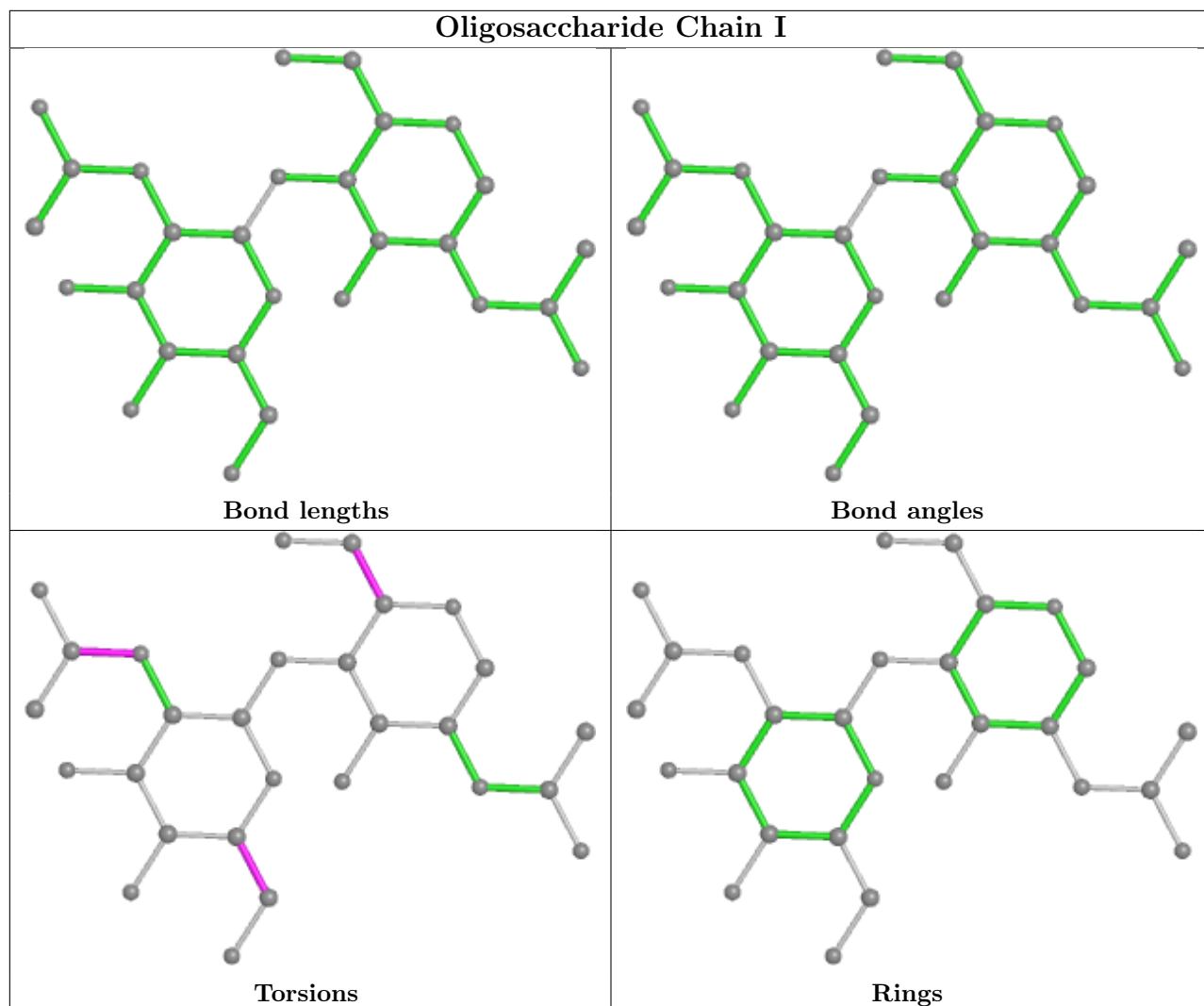
1 monomer is involved in 1 short contact:

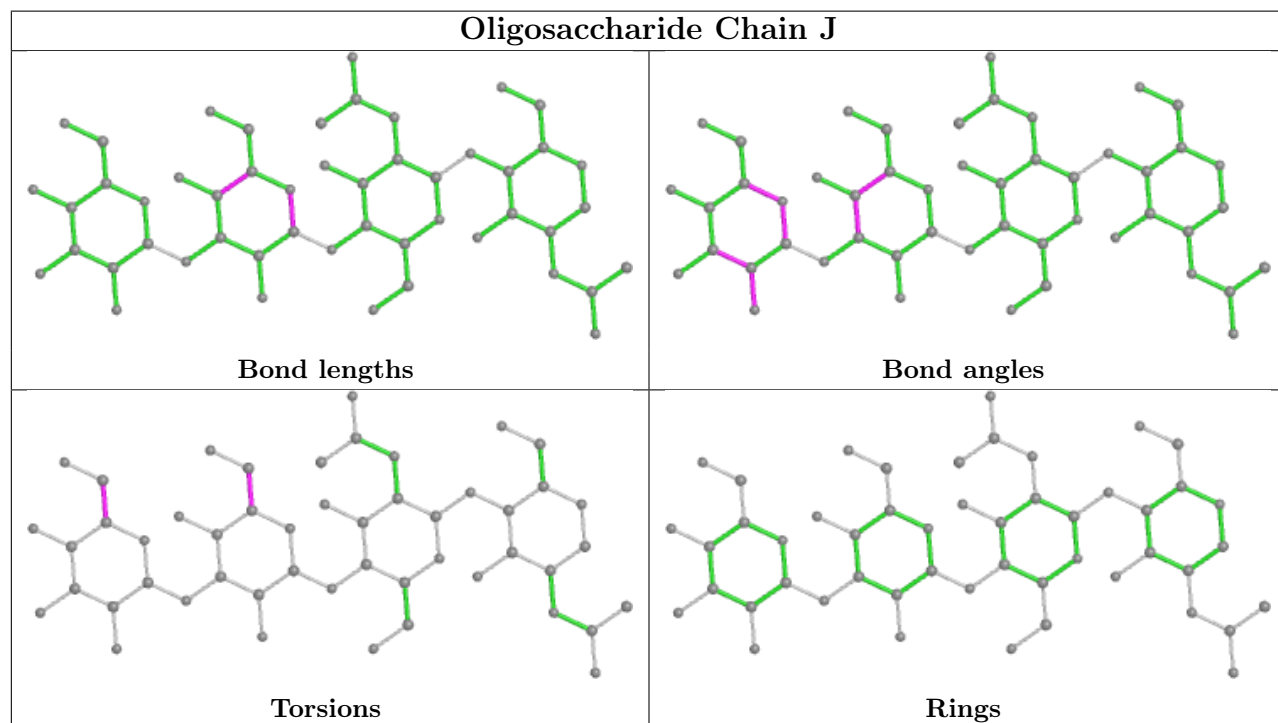
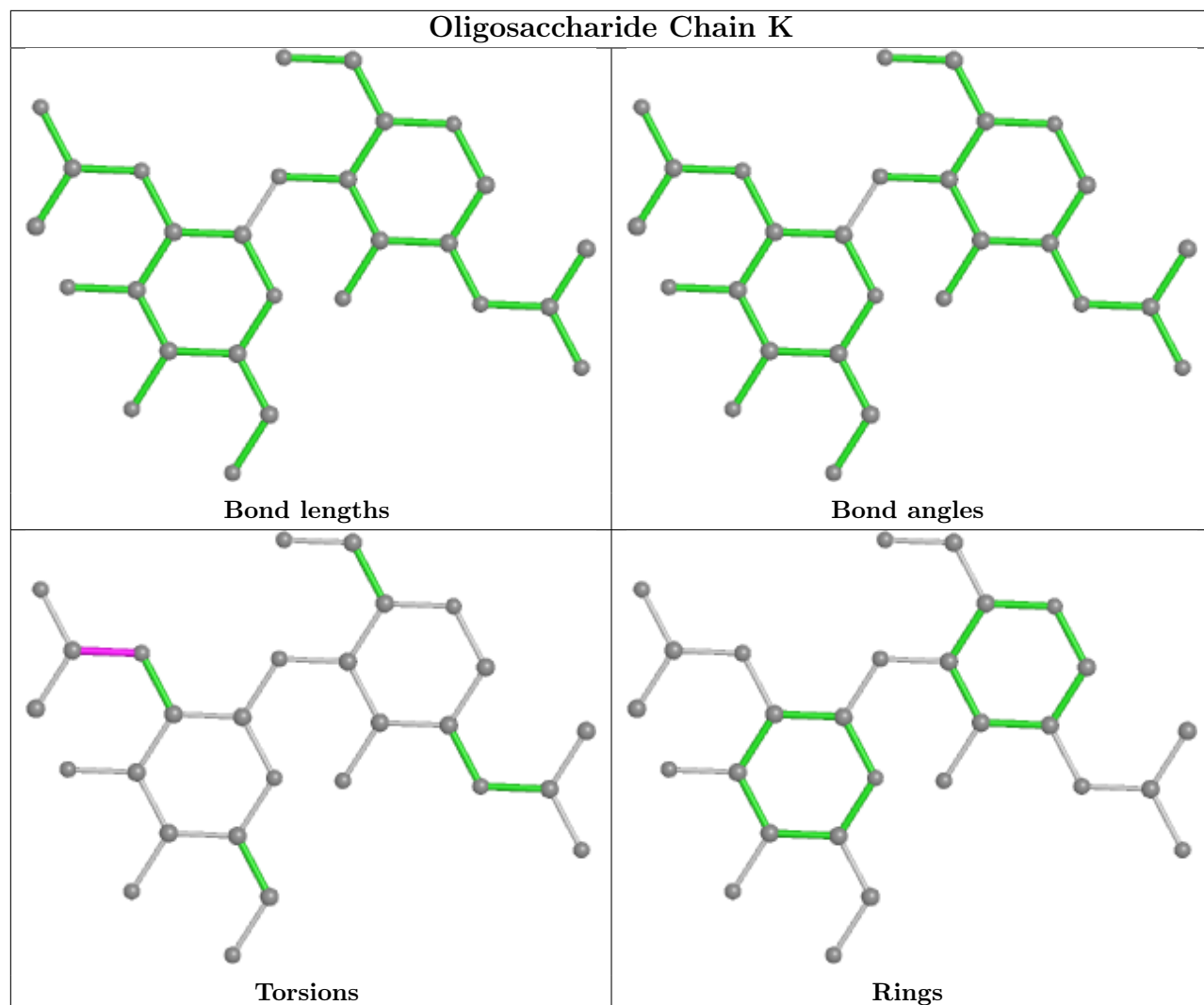
Mol	Chain	Res	Type	Clashes	Symm-Clashes
6	K	1	NAG	1	0

The following is a two-dimensional graphical depiction of Mogul quality analysis of bond lengths,

bond angles, torsion angles, and ring geometry for oligosaccharide.







5.6 Ligand geometry [i](#)

Of 30 ligands modelled in this entry, 17 are monoatomic - leaving 13 for Mogul analysis.

In the following table, the Counts columns list the number of bonds (or angles) for which Mogul statistics could be retrieved, the number of bonds (or angles) that are observed in the model and the number of bonds (or angles) that are defined in the Chemical Component Dictionary. The Link column lists molecule types, if any, to which the group is linked. The Z score for a bond length (or angle) is the number of standard deviations the observed value is removed from the expected value. A bond length (or angle) with $|Z| > 2$ is considered an outlier worth inspection. RMSZ is the root-mean-square of all Z scores of the bond lengths (or angles).

Mol	Type	Chain	Res	Link	Bond lengths			Bond angles		
					Counts	RMSZ	# Z > 2	Counts	RMSZ	# Z > 2
12	M6K	B	2005	10	27,27,27	2.95	12 (44%)	31,37,37	1.53	5 (16%)
12	M6K	D	2006	10	27,27,27	2.92	12 (44%)	31,37,37	1.54	4 (12%)
8	SO4	C	501	-	4,4,4	0.14	0	6,6,6	0.05	0
8	SO4	A	508	-	4,4,4	0.14	0	6,6,6	0.05	0
8	SO4	A	502	-	4,4,4	0.14	0	6,6,6	0.05	0
8	SO4	C	503	-	4,4,4	0.14	0	6,6,6	0.04	0
8	SO4	C	502	-	4,4,4	0.14	0	6,6,6	0.04	0
8	SO4	L	301	-	4,4,4	0.14	0	6,6,6	0.05	0
8	SO4	A	501	-	4,4,4	0.15	0	6,6,6	0.06	0
11	NAG	B	2004	2	14,14,15	0.38	0	17,19,21	0.41	0
8	SO4	A	507	-	4,4,4	0.14	0	6,6,6	0.05	0
11	NAG	D	2004	2	14,14,15	0.44	0	17,19,21	0.76	1 (5%)
8	SO4	C	510	-	4,4,4	0.14	0	6,6,6	0.05	0

In the following table, the Chirals column lists the number of chiral outliers, the number of chiral centers analysed, the number of these observed in the model and the number defined in the Chemical Component Dictionary. Similar counts are reported in the Torsion and Rings columns. '-' means no outliers of that kind were identified.

Mol	Type	Chain	Res	Link	Chirals	Torsions	Rings
12	M6K	B	2005	10	-	5/16/35/35	0/3/3/3
11	NAG	D	2004	2	-	2/6/23/26	0/1/1/1
11	NAG	B	2004	2	-	0/6/23/26	0/1/1/1
12	M6K	D	2006	10	-	5/16/35/35	0/3/3/3

All (24) bond length outliers are listed below:

Mol	Chain	Res	Type	Atoms	Z	Observed(Å)	Ideal(Å)
12	B	2005	M6K	C15-N16	-9.02	1.30	1.47
12	D	2006	M6K	C15-N16	-8.86	1.30	1.47

Continued on next page...

Continued from previous page...

Mol	Chain	Res	Type	Atoms	Z	Observed(Å)	Ideal(Å)
12	B	2005	M6K	C10-N11	4.70	1.40	1.28
12	D	2006	M6K	C10-N11	4.69	1.40	1.28
12	D	2006	M6K	C02-N01	4.53	1.47	1.28
12	B	2005	M6K	C02-N01	4.52	1.47	1.28
12	B	2005	M6K	C14-C13	-4.05	1.46	1.52
12	D	2006	M6K	C14-C13	-3.87	1.46	1.52
12	D	2006	M6K	C09-C04	3.85	1.45	1.39
12	B	2005	M6K	C09-C04	3.77	1.45	1.39
12	B	2005	M6K	C20-N19	-3.61	1.37	1.46
12	D	2006	M6K	C20-N19	-3.61	1.37	1.46
12	D	2006	M6K	C06-C05	3.55	1.45	1.38
12	B	2005	M6K	C06-C05	3.44	1.45	1.38
12	B	2005	M6K	C17-N16	-3.08	1.38	1.46
12	D	2006	M6K	C17-N16	-3.08	1.38	1.46
12	B	2005	M6K	C21-N16	-3.06	1.38	1.46
12	D	2006	M6K	C21-N16	-3.00	1.38	1.46
12	B	2005	M6K	C14-C10	-2.53	1.46	1.50
12	D	2006	M6K	C18-N19	-2.51	1.40	1.46
12	B	2005	M6K	C05-C04	-2.48	1.35	1.39
12	B	2005	M6K	C18-N19	-2.44	1.40	1.46
12	D	2006	M6K	C05-C04	-2.38	1.35	1.39
12	D	2006	M6K	C14-C10	-2.38	1.47	1.50

All (10) bond angle outliers are listed below:

Mol	Chain	Res	Type	Atoms	Z	Observed(°)	Ideal(°)
12	D	2006	M6K	C13-C14-C10	4.95	105.37	100.85
12	B	2005	M6K	C13-C14-C10	4.69	105.14	100.85
11	D	2004	NAG	C1-O5-C5	2.70	115.85	112.19
12	D	2006	M6K	C14-C10-N11	-2.56	108.08	114.35
12	B	2005	M6K	C22-N19-C20	-2.50	107.22	111.09
12	D	2006	M6K	C14-C10-C07	2.44	128.27	124.84
12	B	2005	M6K	C14-C10-N11	-2.44	108.36	114.35
12	B	2005	M6K	O12-C13-C14	2.20	106.37	104.33
12	D	2006	M6K	C22-N19-C20	-2.03	107.94	111.09
12	B	2005	M6K	C06-C07-C10	-2.02	118.38	120.84

There are no chirality outliers.

All (12) torsion outliers are listed below:

Mol	Chain	Res	Type	Atoms
12	B	2005	M6K	C14-C13-C15-N16

Continued on next page...

Continued from previous page...

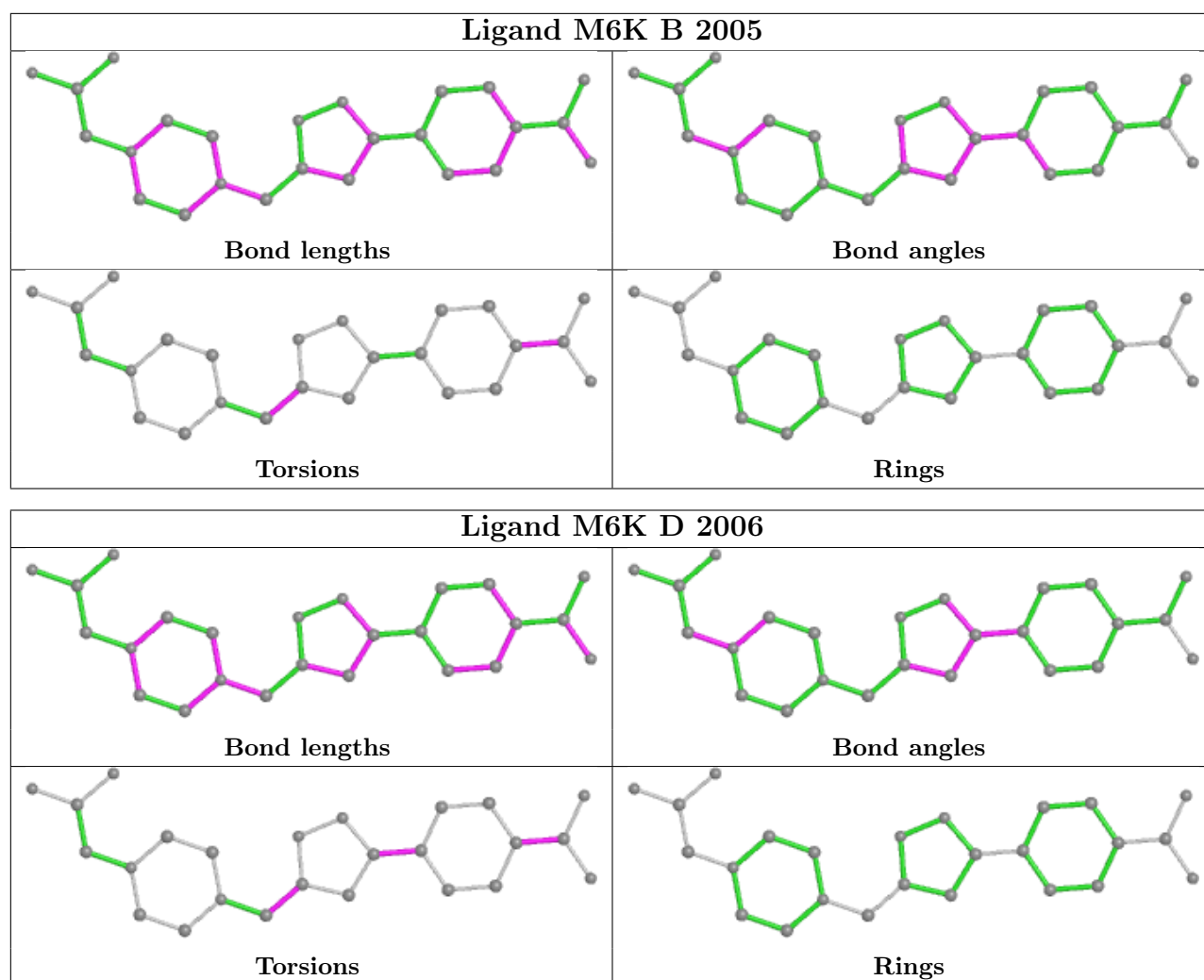
Mol	Chain	Res	Type	Atoms
12	B	2005	M6K	O12-C13-C15-N16
12	B	2005	M6K	N03-C02-C04-C05
12	B	2005	M6K	N03-C02-C04-C09
12	D	2006	M6K	C14-C13-C15-N16
12	D	2006	M6K	O12-C13-C15-N16
12	D	2006	M6K	N03-C02-C04-C05
12	D	2006	M6K	N03-C02-C04-C09
11	D	2004	NAG	O5-C5-C6-O6
11	D	2004	NAG	C4-C5-C6-O6
12	D	2006	M6K	C08-C07-C10-C14
12	B	2005	M6K	N01-C02-C04-C09

There are no ring outliers.

1 monomer is involved in 1 short contact:

Mol	Chain	Res	Type	Clashes	Symm-Clashes
12	D	2006	M6K	1	0

The following is a two-dimensional graphical depiction of Mogul quality analysis of bond lengths, bond angles, torsion angles, and ring geometry for all instances of the Ligand of Interest. In addition, ligands with molecular weight > 250 and outliers as shown on the validation Tables will also be included. For torsion angles, if less than 5% of the Mogul distribution of torsion angles is within 10 degrees of the torsion angle in question, then that torsion angle is considered an outlier. Any bond that is central to one or more torsion angles identified as an outlier by Mogul will be highlighted in the graph. For rings, the root-mean-square deviation (RMSD) between the ring in question and similar rings identified by Mogul is calculated over all ring torsion angles. If the average RMSD is greater than 60 degrees and the minimal RMSD between the ring in question and any Mogul-identified rings is also greater than 60 degrees, then that ring is considered an outlier. The outliers are highlighted in purple. The color gray indicates Mogul did not find sufficient equivalents in the CSD to analyse the geometry.



5.7 Other polymers [i](#)

There are no such residues in this entry.

5.8 Polymer linkage issues [i](#)

The following chains have linkage breaks:

Mol	Chain	Number of breaks
3	H	1

All chain breaks are listed below:

Model	Chain	Residue-1	Atom-1	Residue-2	Atom-2	Distance (Å)
1	H	134:CYS	C	138:THR	N	6.98

6 Fit of model and data [i](#)

6.1 Protein, DNA and RNA chains [i](#)

In the following table, the column labelled ‘#RSRZ > 2’ contains the number (and percentage) of RSRZ outliers, followed by percent RSRZ outliers for the chain as percentile scores relative to all X-ray entries and entries of similar resolution. The OWAB column contains the minimum, median, 95th percentile and maximum values of the occupancy-weighted average B-factor per residue. The column labelled ‘Q < 0.9’ lists the number of (and percentage) of residues with an average occupancy less than 0.9.

Mol	Chain	Analysed	<RSRZ>	#RSRZ>2	OWAB(Å ²)	Q<0.9
1	A	454/454 (100%)	0.34	12 (2%) 56 59	30, 42, 67, 108	0
1	C	453/454 (99%)	0.44	22 (4%) 29 32	38, 59, 88, 121	0
2	B	466/471 (98%)	0.74	50 (10%) 6 5	30, 66, 148, 179	1 (0%)
2	D	471/471 (100%)	0.55	45 (9%) 8 8	38, 76, 126, 152	1 (0%)
3	E	214/216 (99%)	1.86	77 (35%) 0 0	69, 121, 172, 195	0
3	H	216/216 (100%)	0.70	31 (14%) 2 2	49, 97, 148, 160	0
4	F	214/214 (100%)	1.73	64 (29%) 0 0	71, 121, 171, 191	0
4	L	214/214 (100%)	0.39	13 (6%) 21 23	53, 85, 112, 151	0
All	All	2702/2710 (99%)	0.72	314 (11%) 4 4	30, 72, 152, 195	2 (0%)

All (314) RSRZ outliers are listed below:

Mol	Chain	Res	Type	RSRZ
4	F	125	LEU	11.4
2	B	33	LEU	11.1
4	F	214	CYS	10.7
4	F	181	LEU	10.7
4	F	130	ALA	9.8
2	D	375	LEU	9.7
3	E	142	VAL	9.4
3	E	144	LEU	9.1
3	E	160	TRP	9.1
2	B	34	GLY	8.7
4	L	214	CYS	8.7
3	E	194	TRP	8.6
3	E	134	CYS	8.5
4	F	206	VAL	8.5
3	E	201	CYS	8.4
2	D	181	LYS	8.3

Continued on next page...

Continued from previous page...

Mol	Chain	Res	Type	RSRZ
3	E	133	VAL	8.0
3	E	147	LEU	7.7
3	E	132	PRO	7.6
3	E	212	VAL	7.5
3	E	156	VAL	7.5
2	B	77	SER	7.3
3	E	196	SER	7.2
3	E	216	ILE	7.1
4	F	126	THR	7.0
2	B	10	VAL	6.9
2	B	2	PRO	6.9
2	D	469	SER	6.8
3	E	165	LEU	6.8
2	D	33	LEU	6.7
4	F	179	LEU	6.6
4	F	115	VAL	6.5
2	B	466	TRP	6.4
3	E	129	PRO	6.3
4	F	178	THR	6.3
4	F	180	THR	6.3
3	E	127	VAL	6.2
4	F	160	LEU	6.2
2	B	1	GLY	6.1
4	F	191	SER	6.1
2	B	8	ARG	5.9
3	E	219	ARG	5.9
3	E	217	GLU	5.8
4	F	209	PHE	5.7
3	E	183	LEU	5.7
2	B	181	LYS	5.7
3	E	198	SER	5.6
2	B	49	CYS	5.6
2	B	4	ILE	5.6
2	B	36	PRO	5.6
4	F	193	THR	5.6
2	B	44	LEU	5.6
1	A	454	VAL	5.4
2	D	1	GLY	5.4
3	H	217	GLU	5.3
4	F	129	GLY	5.3
4	F	120	PRO	5.2
2	B	76	ASP	5.2

Continued on next page...

Continued from previous page...

Mol	Chain	Res	Type	RSRZ
4	F	15	LEU	5.1
2	D	58	VAL	5.0
3	E	215	LYS	5.0
3	H	165	LEU	4.9
4	F	148	TRP	4.8
3	E	131	ALA	4.8
3	E	130	LEU	4.8
3	E	210	THR	4.8
4	F	83	PHE	4.7
4	L	212	ASN	4.7
2	B	375	LEU	4.7
3	H	130	LEU	4.7
4	F	132	VAL	4.7
3	H	216	ILE	4.6
3	E	128	TYR	4.6
3	E	199	ILE	4.5
2	D	178	TYR	4.5
2	D	471	CYS	4.5
4	F	135	PHE	4.5
3	E	13	LYS	4.5
2	D	2	PRO	4.5
3	E	200	THR	4.4
3	E	176	LEU	4.4
3	H	195	PRO	4.4
3	E	169	VAL	4.4
2	D	46	LYS	4.3
4	F	119	PRO	4.3
4	F	174	SER	4.3
1	C	453	VAL	4.3
3	E	177	GLN	4.3
4	F	106	ILE	4.3
4	F	159	VAL	4.1
3	E	85	SER	4.1
4	F	182	THR	4.1
3	E	218	PRO	4.1
2	D	44	LEU	4.1
4	F	118	PHE	4.0
4	F	212	ASN	4.0
2	D	36	PRO	4.0
2	B	46	LYS	4.0
2	D	380	ILE	4.0
3	E	86	LEU	4.0

Continued on next page...

Continued from previous page...

Mol	Chain	Res	Type	RSRZ
3	H	189	VAL	4.0
4	F	146	VAL	3.9
4	F	204	PRO	3.9
4	F	122	SER	3.9
4	F	134	CYS	3.9
2	D	376	ASN	3.9
3	E	203	VAL	3.9
3	E	145	GLY	3.9
4	F	213	GLU	3.8
3	H	192	SER	3.8
1	A	337	PRO	3.8
3	H	133	VAL	3.8
2	D	35	SER	3.8
2	B	452	ASN	3.8
3	E	126	SER	3.7
2	D	27	SER	3.7
3	E	175	VAL	3.7
3	E	187	VAL	3.7
3	E	149	LYS	3.6
4	F	128	GLY	3.6
3	E	188	THR	3.6
2	D	51	PRO	3.6
4	F	190	ASN	3.6
3	E	16	ALA	3.6
3	H	196	SER	3.6
4	F	184	ASP	3.6
3	E	140	SER	3.6
2	D	34	GLY	3.6
1	C	338	HIS	3.5
4	F	147	LYS	3.5
4	F	158	GLY	3.5
3	H	144	LEU	3.5
4	F	117	ILE	3.5
2	D	470	GLN	3.4
3	H	134	CYS	3.4
4	F	14	SER	3.4
3	E	83	LEU	3.4
4	F	192	TYR	3.4
2	B	9	GLY	3.4
3	E	191	SER	3.4
3	E	189	VAL	3.4
2	B	26	CYS	3.4

Continued on next page...

Continued from previous page...

Mol	Chain	Res	Type	RSRZ
2	B	38	CYS	3.4
2	B	432	ASP	3.4
3	E	167	SER	3.4
4	F	21	ILE	3.3
3	H	203	VAL	3.3
2	D	466	TRP	3.3
2	D	48	ASN	3.3
2	D	8	ARG	3.3
2	B	29	GLU	3.3
3	E	89	GLU	3.3
3	E	205	HIS	3.3
2	D	450	ASN	3.3
1	C	335	ARG	3.2
4	F	136	LEU	3.2
2	B	450	ASN	3.2
1	C	340	LEU	3.2
4	L	205	ILE	3.2
4	F	107	LYS	3.2
4	F	169	LYS	3.2
4	F	194	CYS	3.2
1	C	337	PRO	3.2
3	E	121	LYS	3.1
2	B	42	GLU	3.1
4	F	156	GLN	3.1
3	E	143	THR	3.1
4	F	8	PRO	3.1
3	E	17	SER	3.0
4	F	100	GLY	3.0
4	L	213	GLU	3.0
2	B	460	CYS	3.0
2	D	31	LEU	3.0
3	E	11	LEU	3.0
2	D	404	ARG	3.0
2	B	451	GLY	3.0
3	E	117	VAL	2.9
2	B	22	MET	2.9
1	C	130	CYS	2.9
3	E	146	CYS	2.9
2	B	378	GLU	2.9
4	F	25	ALA	2.9
3	E	168	GLY	2.9
3	E	195	PRO	2.9

Continued on next page...

Continued from previous page...

Mol	Chain	Res	Type	RSRZ
4	F	131	SER	2.9
3	E	66	GLY	2.9
3	E	68	ALA	2.9
4	L	169	LYS	2.8
2	B	28	ASP	2.8
2	B	178	TYR	2.8
4	F	152	GLY	2.8
4	F	157	ASN	2.8
4	L	206	VAL	2.8
2	D	22	MET	2.8
1	C	107	CYS	2.8
3	E	141	SER	2.8
3	H	219	ARG	2.8
3	E	192	SER	2.8
2	B	48	ASN	2.7
4	F	149	LYS	2.7
2	D	4	ILE	2.7
2	D	378	GLU	2.7
2	B	54	ILE	2.7
4	F	87	TYR	2.7
4	F	78	LEU	2.7
4	L	126	THR	2.7
1	C	171	PHE	2.7
3	E	14	PRO	2.6
3	H	147	LEU	2.6
2	D	30	ALA	2.6
2	D	383	LEU	2.6
3	H	215	LYS	2.6
2	D	129[A]	TRP	2.6
2	D	55	GLU	2.6
4	F	116	SER	2.6
1	A	338	HIS	2.6
2	B	446	HIS	2.5
2	D	32	PRO	2.5
2	B	129	TRP	2.5
2	D	9	GLY	2.5
3	E	148	VAL	2.5
3	E	88	SER	2.5
3	E	54	ALA	2.5
2	B	404	ARG	2.5
1	C	110	TRP	2.5
2	D	368	LEU	2.5

Continued on next page...

Continued from previous page...

Mol	Chain	Res	Type	RSRZ
1	C	108	ALA	2.5
3	E	92	ALA	2.5
2	B	262	LEU	2.5
4	F	127	SER	2.4
3	H	117	VAL	2.4
3	H	201	CYS	2.4
4	F	195	GLU	2.4
1	C	118	LYS	2.4
2	B	32	PRO	2.4
3	E	123	THR	2.4
3	H	160	TRP	2.4
3	H	199	ILE	2.4
4	F	23	CYS	2.4
2	D	263	ALA	2.4
1	C	126	PRO	2.4
3	H	142	VAL	2.4
3	H	138	THR	2.4
4	F	210	ASN	2.4
2	B	442	GLU	2.4
2	D	42	GLU	2.4
2	D	52	GLU	2.4
2	B	11	SER	2.4
3	H	166	SER	2.4
1	A	339	ALA	2.4
1	C	109	PRO	2.4
2	D	180	MET	2.4
1	C	191	PHE	2.4
2	B	7	THR	2.4
2	B	35	SER	2.4
2	D	262	LEU	2.4
2	B	376	ASN	2.4
4	F	186	TYR	2.3
1	C	95	ALA	2.3
2	B	67	ARG	2.3
3	H	159	THR	2.3
2	B	50	ALA	2.3
2	B	31	LEU	2.3
3	E	20	LEU	2.3
2	D	53	SER	2.3
3	H	1	GLU	2.3
3	H	17	SER	2.3
2	B	455	PHE	2.2

Continued on next page...

Continued from previous page...

Mol	Chain	Res	Type	RSRZ
4	L	135	PHE	2.2
3	E	65	GLN	2.2
3	H	177	GLN	2.2
2	B	440	GLN	2.2
2	D	57	PRO	2.2
2	D	39	ASP	2.2
3	H	209	SER	2.2
1	C	237	TYR	2.2
1	A	167	CYS	2.2
4	L	170	ASP	2.2
1	C	131	PHE	2.2
3	E	124	ALA	2.2
1	A	169	ALA	2.1
1	A	183	LEU	2.1
1	A	192	LEU	2.1
2	B	448	CYS	2.1
1	A	47	GLN	2.1
3	H	121	LYS	2.1
1	C	172	SER	2.1
2	B	219	PRO	2.1
2	D	258	LEU	2.1
3	E	1	GLU	2.1
3	H	167	SER	2.1
4	L	105	GLU	2.1
3	E	197	GLN	2.1
1	A	186	PRO	2.1
2	D	21	PRO	2.1
3	E	84	SER	2.1
4	F	155	ARG	2.1
3	E	115	VAL	2.1
1	C	187	GLY	2.1
1	C	183	LEU	2.1
1	A	193	GLY	2.1
1	C	167	CYS	2.1
2	B	57	PRO	2.1
3	E	153	PRO	2.1
4	L	111	ALA	2.0
1	C	258	PRO	2.0
4	L	165	ASP	2.0
3	H	158	LEU	2.0
3	H	187	VAL	2.0
4	F	47	LEU	2.0

Continued on next page...

Continued from previous page...

Mol	Chain	Res	Type	RSRZ
4	L	136	LEU	2.0
1	A	358	SER	2.0
3	E	25	SER	2.0
3	E	178	SER	2.0

6.2 Non-standard residues in protein, DNA, RNA chains [i](#)

There are no non-standard protein/DNA/RNA residues in this entry.

6.3 Carbohydrates [i](#)

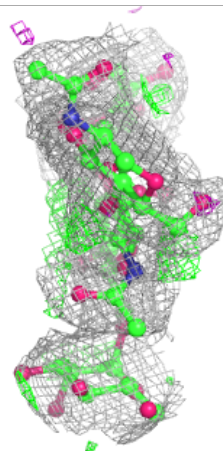
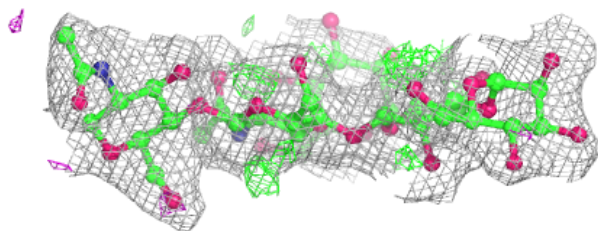
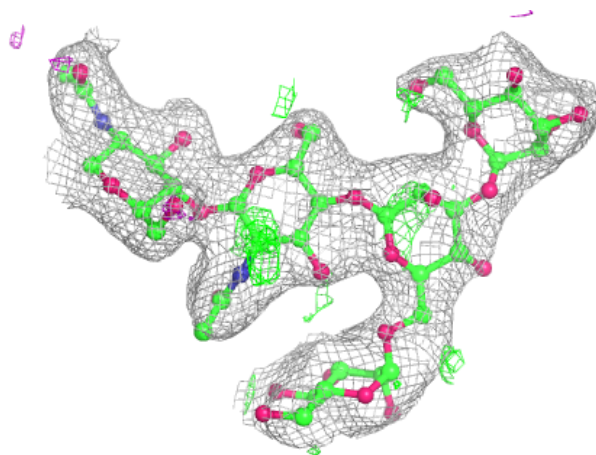
In the following table, the Atoms column lists the number of modelled atoms in the group and the number defined in the chemical component dictionary. The B-factors column lists the minimum, median, 95th percentile and maximum values of B factors of atoms in the group. The column labelled 'Q< 0.9' lists the number of atoms with occupancy less than 0.9.

Mol	Type	Chain	Res	Atoms	RSCC	RSR	B-factors(Å ²)	Q<0.9
5	BMA	G	3	11/12	0.71	0.19	93,93,93,93	0
6	NAG	I	2	14/15	0.79	0.30	114,114,114,114	0
7	BMA	J	3	11/12	0.81	0.24	100,100,100,100	0
6	NAG	K	2	14/15	0.84	0.30	117,117,117,117	0
5	MAN	G	5	11/12	0.86	0.22	102,102,102,102	0
5	NAG	G	2	14/15	0.87	0.13	72,72,72,72	0
7	MAN	J	4	11/12	0.87	0.23	100,100,100,100	0
6	NAG	I	1	14/15	0.88	0.19	106,106,106,106	0
5	MAN	G	4	11/12	0.88	0.14	90,90,90,90	0
6	NAG	K	1	14/15	0.88	0.27	107,107,107,107	0
7	NAG	J	1	14/15	0.90	0.11	69,69,69,69	0
7	NAG	J	2	14/15	0.90	0.17	87,87,87,87	0
5	NAG	G	1	14/15	0.94	0.12	51,51,51,51	0

The following is a graphical depiction of the model fit to experimental electron density for oligosaccharide. Each fit is shown from different orientation to approximate a three-dimensional view.

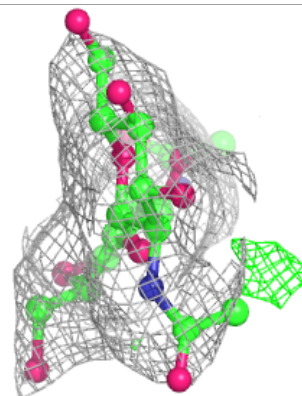
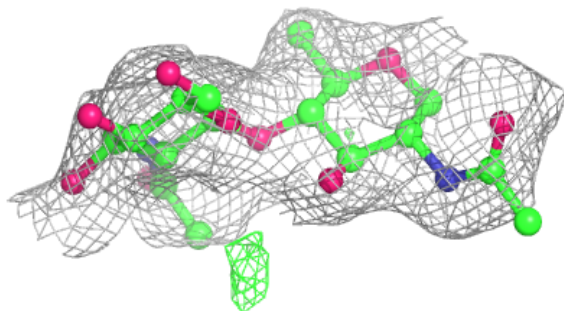
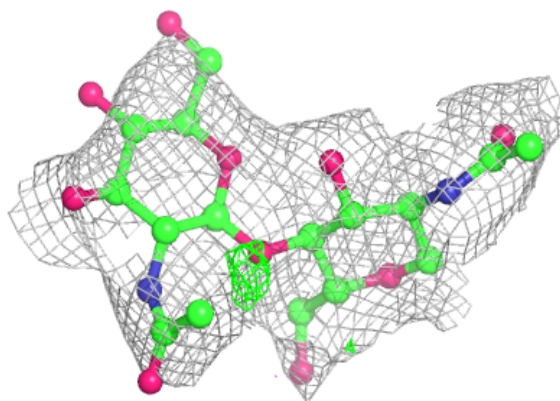
Electron density around Chain G:

$2mF_o-DF_c$ (at 0.7 rmsd) in gray
 mF_o-DF_c (at 3 rmsd) in purple (negative)
and green (positive)

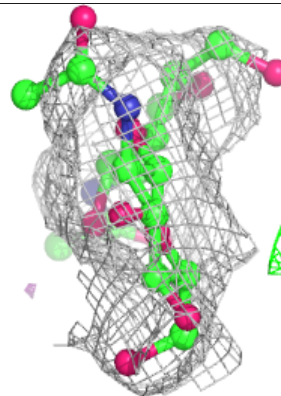
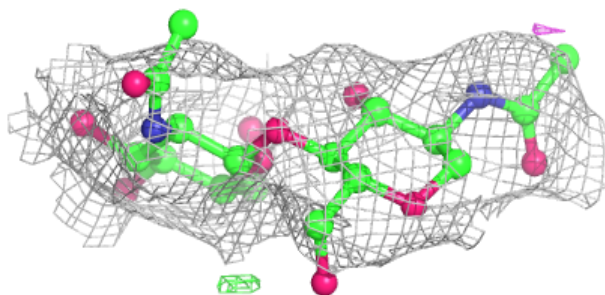
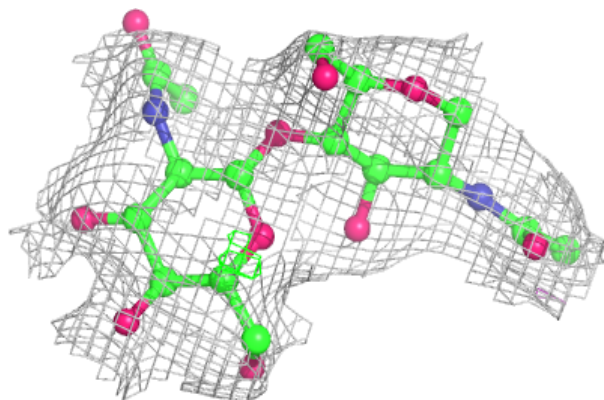


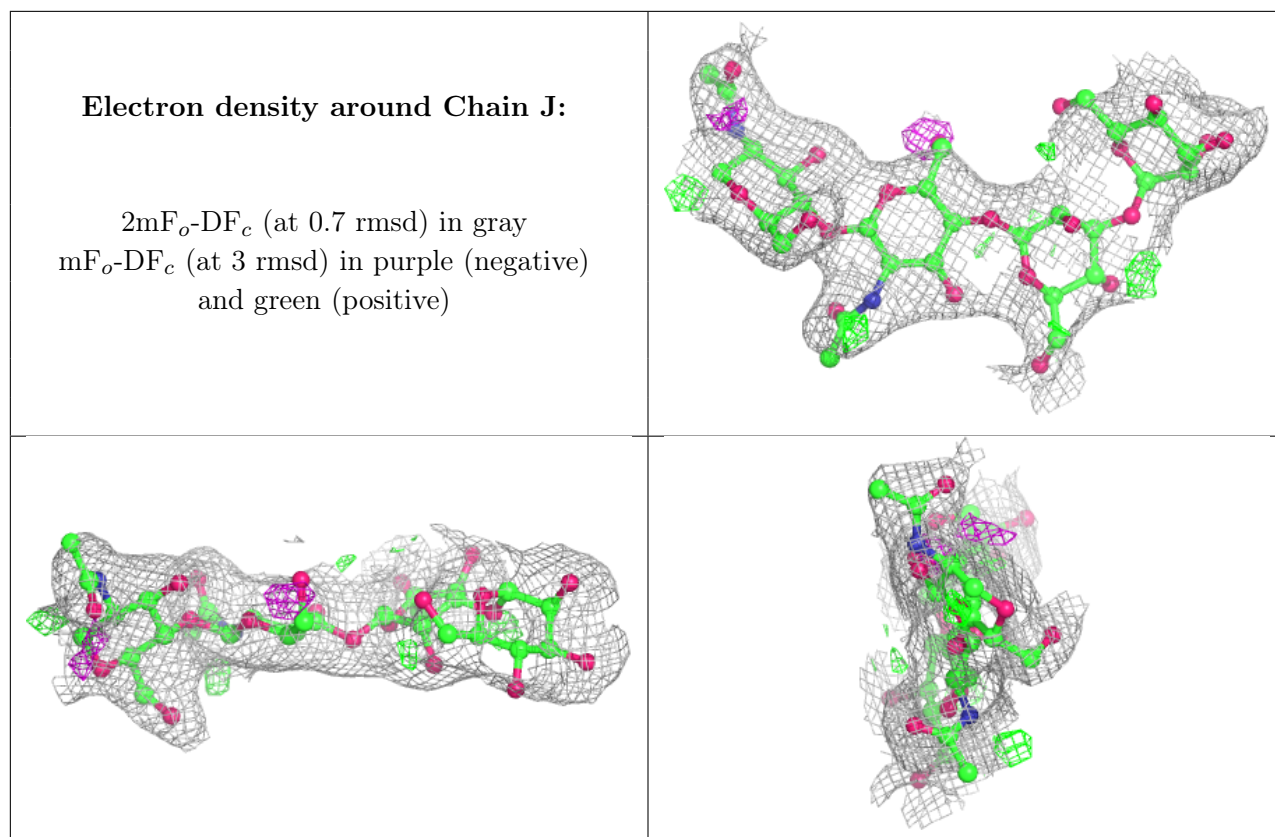
Electron density around Chain I:

$2mF_o-DF_c$ (at 0.7 rmsd) in gray
 mF_o-DF_c (at 3 rmsd) in purple (negative)
and green (positive)

**Electron density around Chain K:**

$2mF_o-DF_c$ (at 0.7 rmsd) in gray
 mF_o-DF_c (at 3 rmsd) in purple (negative)
and green (positive)





6.4 Ligands [i](#)

In the following table, the Atoms column lists the number of modelled atoms in the group and the number defined in the chemical component dictionary. The B-factors column lists the minimum, median, 95th percentile and maximum values of B factors of atoms in the group. The column labelled 'Q< 0.9' lists the number of atoms with occupancy less than 0.9.

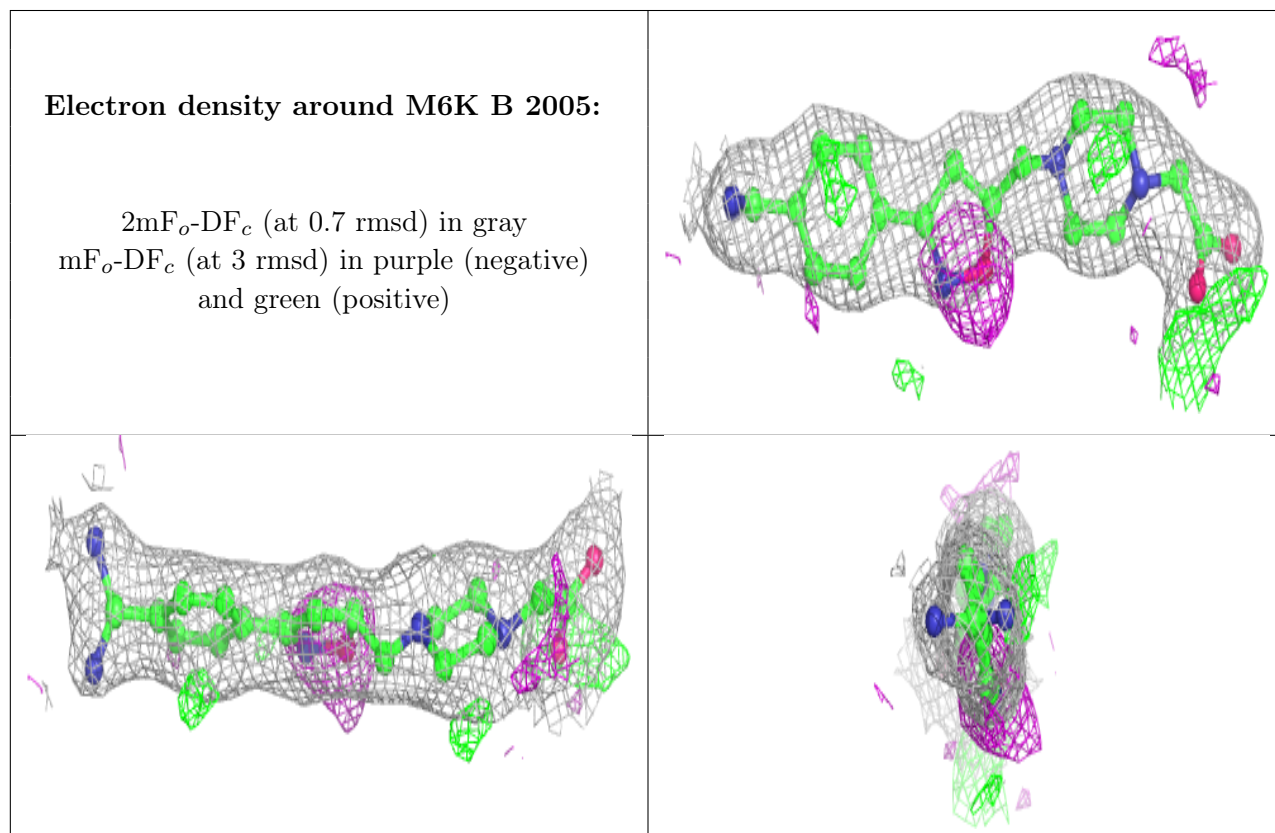
Mol	Type	Chain	Res	Atoms	RSCC	RSR	B-factors(Å ²)	Q<0.9
13	CL	D	2005	1/1	0.69	0.10	91,91,91,91	0
9	CA	C	506	1/1	0.78	0.06	81,81,81,81	0
8	SO4	C	502	5/5	0.80	0.27	99,99,99,99	0
8	SO4	C	503	5/5	0.83	0.18	104,104,104,104	0
10	MN	B	2002	1/1	0.86	0.16	78,78,78,78	0
11	NAG	D	2004	14/15	0.87	0.28	108,108,108,108	0
8	SO4	C	501	5/5	0.87	0.18	88,88,88,88	0
13	CL	C	505	1/1	0.88	0.35	93,93,93,93	0
9	CA	C	509	1/1	0.89	0.14	56,56,56,56	0
13	CL	C	504	1/1	0.90	0.25	85,85,85,85	0
11	NAG	B	2004	14/15	0.90	0.39	111,111,111,111	0
8	SO4	A	508	5/5	0.90	0.17	95,95,95,95	0
12	M6K	B	2005	25/25	0.91	0.19	47,47,47,47	0
9	CA	C	507	1/1	0.92	0.06	66,66,66,66	0

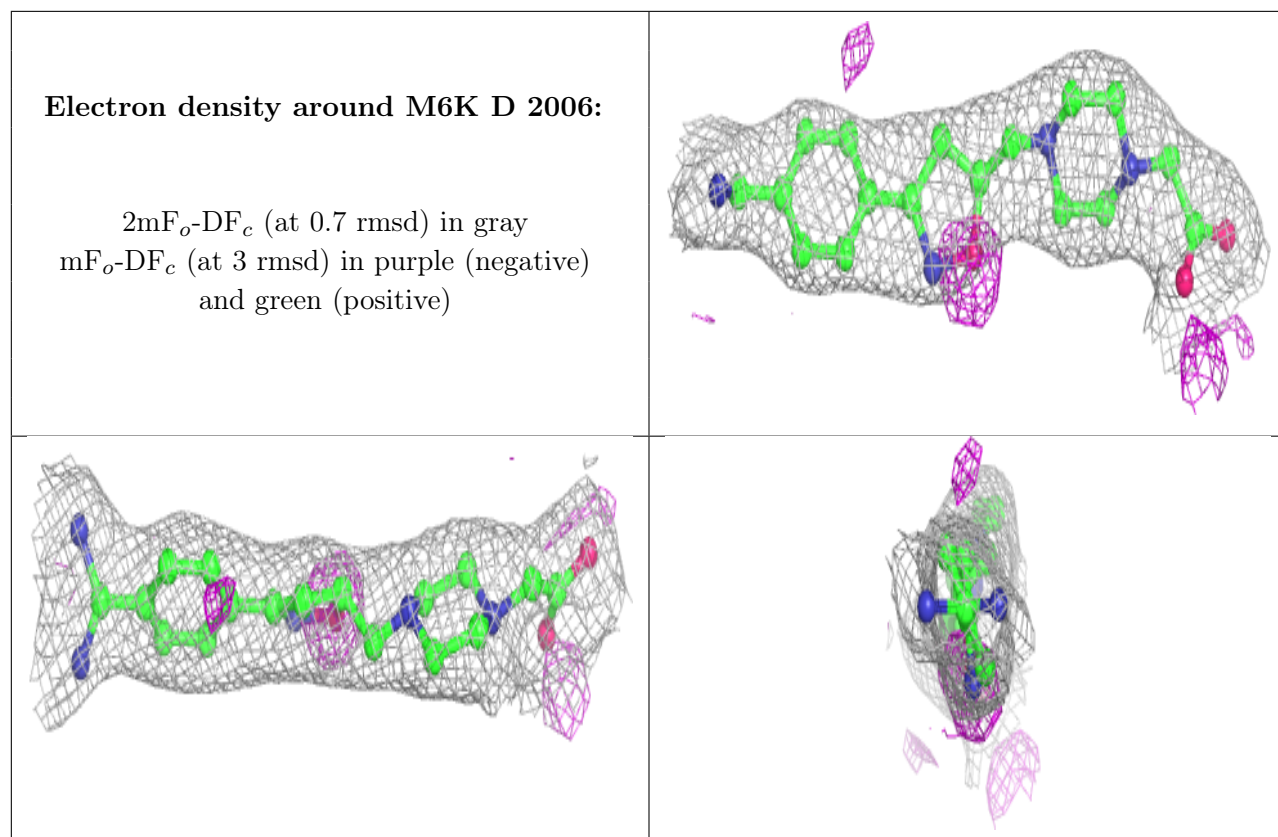
Continued on next page...

Continued from previous page...

Mol	Type	Chain	Res	Atoms	RSCC	RSR	B-factors(\AA^2)	Q<0.9
8	SO4	A	507	5/5	0.92	0.25	83,83,83,83	0
12	M6K	D	2006	25/25	0.92	0.14	57,57,57,57	0
8	SO4	C	510	5/5	0.92	0.10	98,98,98,98	0
10	MN	D	2002	1/1	0.92	0.08	66,66,66,66	0
8	SO4	A	501	5/5	0.92	0.23	72,72,72,72	0
8	SO4	L	301	5/5	0.95	0.16	88,88,88,88	0
9	CA	A	505	1/1	0.95	0.18	36,36,36,36	0
9	CA	A	503	1/1	0.97	0.09	47,47,47,47	0
10	MN	D	2003	1/1	0.97	0.11	48,48,48,48	0
10	MN	D	2001	1/1	0.97	0.07	47,47,47,47	0
8	SO4	A	502	5/5	0.98	0.09	66,66,66,66	0
9	CA	A	506	1/1	0.98	0.12	36,36,36,36	0
9	CA	C	508	1/1	0.98	0.12	59,59,59,59	0
9	CA	A	504	1/1	0.99	0.11	37,37,37,37	0
10	MN	B	2003	1/1	0.99	0.17	35,35,35,35	0
10	MN	B	2001	1/1	0.99	0.16	34,34,34,34	0

The following is a graphical depiction of the model fit to experimental electron density of all instances of the Ligand of Interest. In addition, ligands with molecular weight > 250 and outliers as shown on the geometry validation Tables will also be included. Each fit is shown from different orientation to approximate a three-dimensional view.





6.5 Other polymers [i](#)

There are no such residues in this entry.