



Full wwPDB X-ray Structure Validation Report ⓘ

Jun 19, 2020 – 08:11 pm BST

PDB ID : 1U1H
Title : A. thaliana cobalamine independent methionine synthase
Authors : Ferrer, J.-L.; Ravanel, S.; Robert, M.; Dumas, R.
Deposited on : 2004-07-15
Resolution : 2.55 Å(reported)

This is a Full wwPDB X-ray Structure Validation Report for a publicly released PDB entry.

We welcome your comments at validation@mail.wwpdb.org

A user guide is available at

<https://www.wwpdb.org/validation/2017/XrayValidationReportHelp>

with specific help available everywhere you see the ⓘ symbol.

The following versions of software and data (see [references ⓘ](#)) were used in the production of this report:

MolProbity : 4.02b-467
Mogul : 1.8.5 (274361), CSD as541be (2020)
Xtriage (Phenix) : 1.13
EDS : 2.11
Percentile statistics : 20191225.v01 (using entries in the PDB archive December 25th 2019)
Refmac : 5.8.0158
CCP4 : 7.0.044 (Gargrove)
Ideal geometry (proteins) : Engh & Huber (2001)
Ideal geometry (DNA, RNA) : Parkinson et al. (1996)
Validation Pipeline (wwPDB-VP) : 2.11

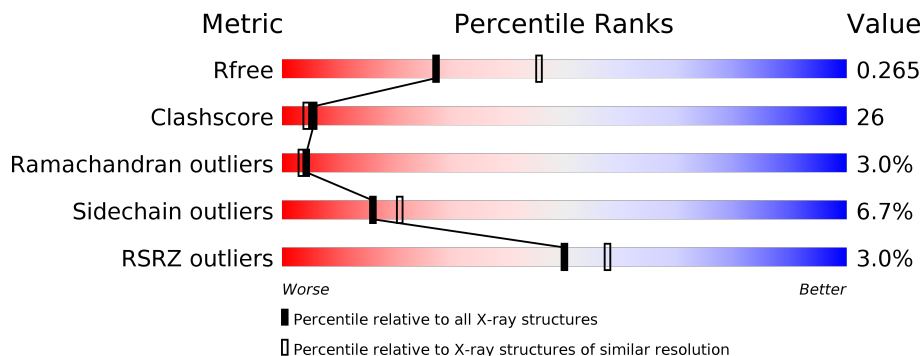
1 Overall quality at a glance

The following experimental techniques were used to determine the structure:

X-RAY DIFFRACTION

The reported resolution of this entry is 2.55 Å.

Percentile scores (ranging between 0-100) for global validation metrics of the entry are shown in the following graphic. The table shows the number of entries on which the scores are based.



Metric	Whole archive (#Entries)	Similar resolution (#Entries, resolution range(Å))
R_{free}	130704	1284 (2.56-2.52)
Clashscore	141614	1332 (2.56-2.52)
Ramachandran outliers	138981	1315 (2.56-2.52)
Sidechain outliers	138945	1315 (2.56-2.52)
RSRZ outliers	127900	1272 (2.56-2.52)

The table below summarises the geometric issues observed across the polymeric chains and their fit to the electron density. The red, orange, yellow and green segments on the lower bar indicate the fraction of residues that contain outliers for ≥ 3 , 2, 1 and 0 types of geometric quality criteria respectively. A grey segment represents the fraction of residues that are not modelled. The numeric value for each fraction is indicated below the corresponding segment, with a dot representing fractions $\leq 5\%$. The upper red bar (where present) indicates the fraction of residues that have poor fit to the electron density. The numeric value is given above the bar.

Mol	Chain	Length	Quality of chain
1	A	765	

2 Entry composition i

There are 5 unique types of molecules in this entry. The entry contains 6100 atoms, of which 0 are hydrogens and 0 are deuteriums.

In the tables below, the ZeroOcc column contains the number of atoms modelled with zero occupancy, the AltConf column contains the number of residues with at least one atom in alternate conformation and the Trace column contains the number of residues modelled with at most 2 atoms.

- Molecule 1 is a protein called 5-methyltetrahydropteroyltriglutamate--homocysteine methyltransferase.

Mol	Chain	Residues	Atoms					ZeroOcc	AltConf	Trace	
			Total	C	N	O	S				Se
1	A	746	5783	3686	974	1099	6	18	0	0	0

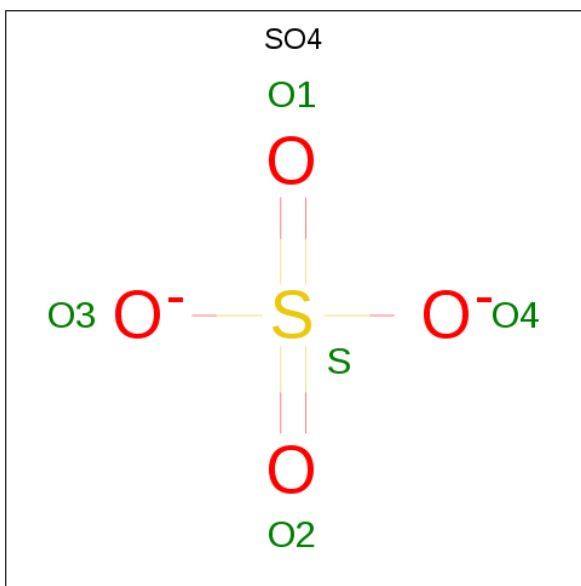
There are 19 discrepancies between the modelled and reference sequences:

Chain	Residue	Modelled	Actual	Comment	Reference
A	1	MSE	MET	MODIFIED RESIDUE	UNP O50008
A	11	MSE	MET	MODIFIED RESIDUE	UNP O50008
A	49	MSE	MET	MODIFIED RESIDUE	UNP O50008
A	74	MSE	MET	MODIFIED RESIDUE	UNP O50008
A	97	MSE	MET	MODIFIED RESIDUE	UNP O50008
A	107	MSE	MET	MODIFIED RESIDUE	UNP O50008
A	109	MSE	MET	MODIFIED RESIDUE	UNP O50008
A	212	MSE	MET	MODIFIED RESIDUE	UNP O50008
A	351	MSE	LEU	MODIFIED RESIDUE	UNP O50008
A	496	MSE	MET	MODIFIED RESIDUE	UNP O50008
A	538	MSE	MET	MODIFIED RESIDUE	UNP O50008
A	545	MSE	MET	MODIFIED RESIDUE	UNP O50008
A	549	MSE	MET	MODIFIED RESIDUE	UNP O50008
A	554	MSE	MET	MODIFIED RESIDUE	UNP O50008
A	557	MSE	MET	MODIFIED RESIDUE	UNP O50008
A	648	MSE	MET	MODIFIED RESIDUE	UNP O50008
A	663	MSE	MET	MODIFIED RESIDUE	UNP O50008
A	718	MSE	MET	MODIFIED RESIDUE	UNP O50008
A	750	MSE	MET	MODIFIED RESIDUE	UNP O50008

- Molecule 2 is ZINC ION (three-letter code: ZN) (formula: Zn).

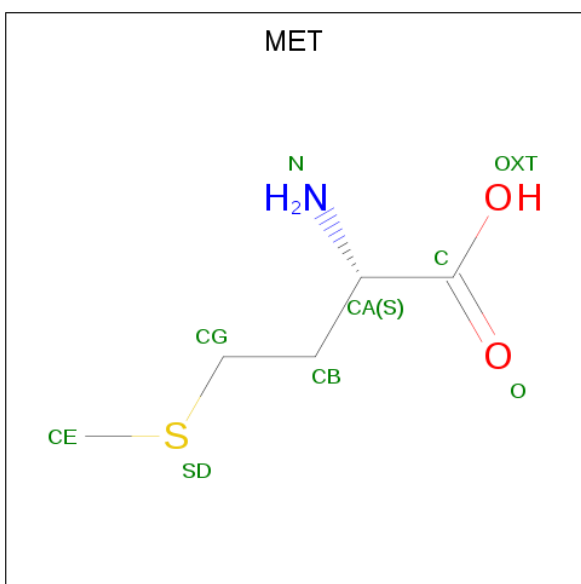
Mol	Chain	Residues	Atoms		ZeroOcc	AltConf
2	A	2	Total	Zn	0	0
			2	2		

- Molecule 3 is SULFATE ION (three-letter code: SO4) (formula: O₄S).



Mol	Chain	Residues	Atoms			ZeroOcc	AltConf
3	A	1	Total	O	S	0	0
			5	4	1		
3	A	1	Total	O	S	0	0
			5	4	1		
3	A	1	Total	O	S	0	0
			5	4	1		
3	A	1	Total	O	S	0	0
			5	4	1		

- Molecule 4 is METHIONINE (three-letter code: MET) (formula: C₅H₁₁NO₂S).



Mol	Chain	Residues	Atoms					ZeroOcc	AltConf
			Total	C	N	O	S		
4	A	1	9	5	1	2	1	0	0

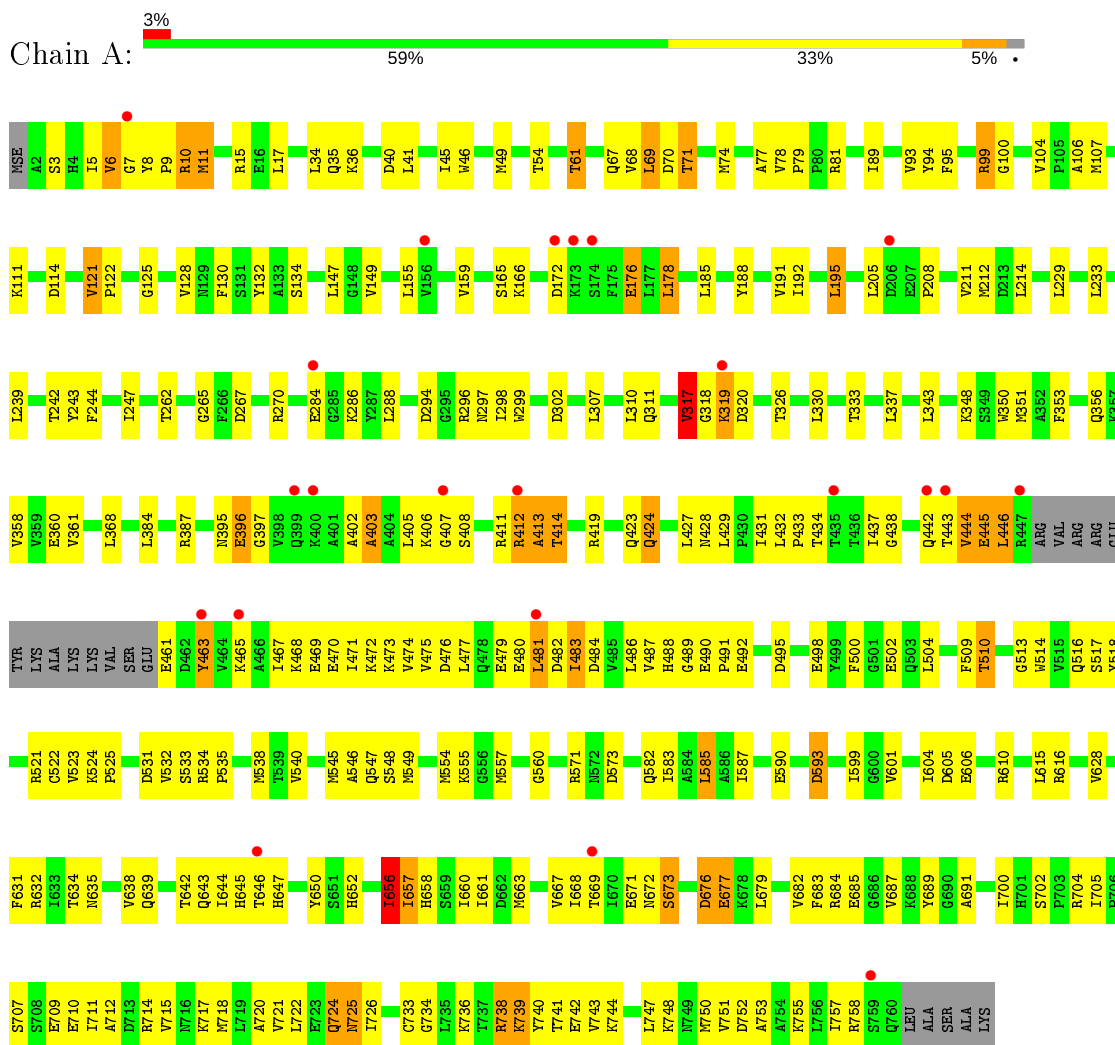
- Molecule 5 is water.

Mol	Chain	Residues	Atoms		ZeroOcc	AltConf
			Total	O		
5	A	286	286	286	0	0

3 Residue-property plots [i](#)

These plots are drawn for all protein, RNA and DNA chains in the entry. The first graphic for a chain summarises the proportions of the various outlier classes displayed in the second graphic. The second graphic shows the sequence view annotated by issues in geometry and electron density. Residues are color-coded according to the number of geometric quality criteria for which they contain at least one outlier: green = 0, yellow = 1, orange = 2 and red = 3 or more. A red dot above a residue indicates a poor fit to the electron density ($RSRZ > 2$). Stretches of 2 or more consecutive residues without any outlier are shown as a green connector. Residues present in the sample, but not in the model, are shown in grey.

- Molecule 1: 5-methyltetrahydropteroyltriglutamate--homocysteine methyltransferase



4 Data and refinement statistics

Property	Value	Source
Space group	P 65	Depositor
Cell constants a, b, c, α , β , γ	121.72Å 121.72Å 132.71Å 90.00° 90.00° 120.00°	Depositor
Resolution (Å)	29.61 – 2.55 29.66 – 2.55	Depositor EDS
% Data completeness (in resolution range)	91.5 (29.61-2.55) 97.5 (29.66-2.55)	Depositor EDS
R_{merge}	(Not available)	Depositor
R_{sym}	0.09	Depositor
$\langle I/\sigma(I) \rangle$ ¹	0.91 (at 2.54Å)	Xtrriage
Refinement program	CNS 1.1	Depositor
R, R_{free}	0.214 , 0.260 0.225 , 0.265	Depositor DCC
R_{free} test set	3373 reflections (4.89%)	wwPDB-VP
Wilson B-factor (Å ²)	41.2	Xtrriage
Anisotropy	0.482	Xtrriage
Bulk solvent k_{sol} (e/Å ³), B_{sol} (Å ²)	0.34 , 50.2	EDS
L-test for twinning ²	$\langle L \rangle = 0.50$, $\langle L^2 \rangle = 0.33$	Xtrriage
Estimated twinning fraction	0.026 for h,-h-k,-l	Xtrriage
F_o, F_c correlation	0.93	EDS
Total number of atoms	6100	wwPDB-VP
Average B, all atoms (Å ²)	44.0	wwPDB-VP

Xtrriage's analysis on translational NCS is as follows: *The largest off-origin peak in the Patterson function is 2.89% of the height of the origin peak. No significant pseudotranslation is detected.*

¹Intensities estimated from amplitudes.

²Theoretical values of $\langle |L| \rangle$, $\langle L^2 \rangle$ for acentric reflections are 0.5, 0.333 respectively for untwinned datasets, and 0.375, 0.2 for perfectly twinned datasets.

5 Model quality [i](#)

5.1 Standard geometry [i](#)

Bond lengths and bond angles in the following residue types are not validated in this section: ZN, SO4

The Z score for a bond length (or angle) is the number of standard deviations the observed value is removed from the expected value. A bond length (or angle) with $|Z| > 5$ is considered an outlier worth inspection. RMSZ is the root-mean-square of all Z scores of the bond lengths (or angles).

Mol	Chain	Bond lengths		Bond angles	
		RMSZ	# Z >5	RMSZ	# Z >5
1	A	0.36	0/5884	0.60	0/7949

There are no bond length outliers.

There are no bond angle outliers.

There are no chirality outliers.

There are no planarity outliers.

5.2 Too-close contacts [i](#)

In the following table, the Non-H and H(model) columns list the number of non-hydrogen atoms and hydrogen atoms in the chain respectively. The H(added) column lists the number of hydrogen atoms added and optimized by MolProbity. The Clashes column lists the number of clashes within the asymmetric unit, whereas Symm-Clashes lists symmetry related clashes.

Mol	Chain	Non-H	H(model)	H(added)	Clashes	Symm-Clashes
1	A	5783	0	5793	299	0
2	A	2	0	0	0	0
3	A	20	0	0	0	0
4	A	9	0	8	1	0
5	A	286	0	0	9	0
All	All	6100	0	5801	299	0

The all-atom clashscore is defined as the number of clashes found per 1000 atoms (including hydrogen atoms). The all-atom clashscore for this structure is 26.

All (299) close contacts within the same asymmetric unit are listed below, sorted by their clash magnitude.

Atom-1	Atom-2	Interatomic distance (Å)	Clash overlap (Å)
1:A:481:LEU:HD13	1:A:751:VAL:HB	1.23	1.09
1:A:212:MSE:HE1	1:A:615:LEU:HB3	1.41	1.03
1:A:531:ASP:HA	1:A:582:GLN:HE22	1.20	1.02
1:A:111:LYS:HD2	1:A:111:LYS:H	1.26	1.01
1:A:714:ARG:HB3	1:A:714:ARG:HH11	1.25	1.00
1:A:647:HIS:HD1	1:A:669:THR:HG23	1.28	0.99
1:A:242:THR:HG21	1:A:247:ILE:HD11	1.48	0.93
1:A:714:ARG:NH1	1:A:714:ARG:HB3	1.83	0.93
1:A:661:ILE:HD11	1:A:687:VAL:HG13	1.53	0.91
1:A:481:LEU:CD1	1:A:751:VAL:HB	2.04	0.88
1:A:510:THR:CG2	1:A:513:GLY:H	1.88	0.87
1:A:481:LEU:CB	1:A:751:VAL:HG11	2.06	0.85
1:A:740:TYR:HA	1:A:743:VAL:HG22	1.57	0.85
1:A:211:VAL:HG23	1:A:212:MSE:HE3	1.59	0.84
1:A:481:LEU:HB2	1:A:751:VAL:HG11	1.59	0.84
1:A:571:ARG:HD2	1:A:573:ASP:OD1	1.79	0.82
1:A:111:LYS:N	1:A:111:LYS:HD2	1.94	0.82
1:A:7:GLY:HA2	1:A:61:THR:HG21	1.61	0.81
1:A:707:SER:OG	1:A:709:GLU:HG2	1.81	0.80
1:A:738:ARG:HE	1:A:738:ARG:HA	1.46	0.79
1:A:125:GLY:O	1:A:128:VAL:HG12	1.82	0.79
1:A:481:LEU:HD11	1:A:483:ILE:HG12	1.65	0.77
1:A:477:LEU:HB3	1:A:486:LEU:HD22	1.66	0.77
1:A:444:VAL:HG23	1:A:445:GLU:H	1.49	0.76
1:A:45:ILE:HG22	1:A:49:MSE:HE2	1.66	0.76
1:A:419:ARG:O	1:A:423:GLN:HG3	1.86	0.74
1:A:211:VAL:HG23	1:A:212:MSE:CE	2.17	0.74
1:A:481:LEU:HB2	1:A:751:VAL:CB	2.19	0.73
1:A:46:TRP:HB3	1:A:149:VAL:HG11	1.69	0.72
1:A:656:ILE:HG12	1:A:656:ILE:O	1.87	0.72
1:A:212:MSE:HE1	1:A:615:LEU:HD13	1.72	0.72
1:A:481:LEU:HB2	1:A:751:VAL:CG1	2.19	0.72
1:A:676:ASP:N	1:A:676:ASP:OD2	2.22	0.72
1:A:605:ASP:HB3	1:A:647:HIS:HB3	1.72	0.72
1:A:661:ILE:HD11	1:A:687:VAL:CG1	2.19	0.72
1:A:74:MSE:HE1	1:A:155:LEU:HD22	1.70	0.72
1:A:604:ILE:HD13	1:A:634:THR:HG21	1.70	0.72
1:A:343:LEU:O	1:A:348:LYS:HD2	1.90	0.71
1:A:212:MSE:HE1	1:A:615:LEU:CB	2.19	0.70
1:A:10:ARG:NE	1:A:516:GLN:HE22	1.89	0.70
1:A:631:PHE:O	1:A:634:THR:HB	1.91	0.70
1:A:532:VAL:H	1:A:582:GLN:NE2	1.89	0.70

Continued on next page...

Continued from previous page...

Atom-1	Atom-2	Interatomic distance (Å)	Clash overlap (Å)
1:A:672:ASN:O	1:A:673:SER:HB3	1.88	0.70
1:A:438:GLY:HA2	1:A:487:VAL:HG11	1.73	0.69
1:A:444:VAL:HG23	1:A:445:GLU:N	2.07	0.69
1:A:480:GLU:O	1:A:481:LEU:HG	1.93	0.69
1:A:510:THR:HG22	1:A:524:LYS:HD3	1.74	0.69
1:A:498:GLU:O	1:A:502:GLU:HG3	1.92	0.68
1:A:646:THR:HG22	1:A:668:ILE:HG22	1.75	0.68
1:A:208:PRO:O	1:A:211:VAL:HG22	1.94	0.67
1:A:533:SER:O	1:A:535:PRO:HD3	1.94	0.67
1:A:111:LYS:CD	1:A:111:LYS:H	2.06	0.66
1:A:532:VAL:H	1:A:582:GLN:HE21	1.43	0.66
1:A:481:LEU:HB3	1:A:751:VAL:HG11	1.77	0.66
1:A:738:ARG:NE	1:A:738:ARG:HA	2.10	0.66
1:A:7:GLY:CA	1:A:61:THR:HG21	2.25	0.66
1:A:604:ILE:O	1:A:646:THR:HA	1.96	0.65
1:A:557:MSE:HE1	1:A:605:ASP:OD2	1.96	0.65
1:A:521:ARG:HE	1:A:522:CYS:H	1.42	0.65
1:A:700:ILE:CD1	1:A:733:CYS:HB3	2.26	0.65
1:A:751:VAL:HG13	1:A:752:ASP:N	2.10	0.65
1:A:661:ILE:CD1	1:A:687:VAL:HG13	2.24	0.65
1:A:411:ARG:NH2	1:A:419:ARG:HD2	2.11	0.65
1:A:521:ARG:HA	1:A:521:ARG:HE	1.63	0.64
1:A:531:ASP:CA	1:A:582:GLN:HE22	2.04	0.64
1:A:5:ILE:HD11	1:A:358:VAL:HG13	1.79	0.64
1:A:8:TYR:CE2	1:A:45:ILE:HD12	2.33	0.64
1:A:546:ALA:HB3	1:A:554:MSE:HE2	1.79	0.64
1:A:481:LEU:HB2	1:A:751:VAL:HG21	1.79	0.64
1:A:211:VAL:CG1	1:A:242:THR:HG23	2.29	0.63
1:A:498:GLU:HG2	1:A:509:PHE:HE2	1.63	0.63
1:A:188:TYR:O	1:A:192:ILE:HG13	1.99	0.63
1:A:748:LYS:O	1:A:751:VAL:HG12	1.99	0.63
1:A:463:TYR:O	1:A:467:ILE:HG13	2.00	0.62
1:A:74:MSE:HE1	1:A:155:LEU:CD2	2.28	0.62
1:A:753:ALA:O	1:A:757:ILE:HG12	1.98	0.62
1:A:538:MSE:HE2	1:A:590:GLU:HG3	1.80	0.62
1:A:307:LEU:O	1:A:311:GLN:HG3	2.00	0.62
1:A:521:ARG:NE	1:A:521:ARG:HA	2.14	0.62
1:A:571:ARG:CD	1:A:573:ASP:OD1	2.48	0.61
1:A:538:MSE:CE	1:A:590:GLU:HG3	2.31	0.61
1:A:41:LEU:O	1:A:45:ILE:HG12	1.99	0.61
1:A:715:VAL:HA	1:A:718:MSE:HE2	1.82	0.61

Continued on next page...

Continued from previous page...

Atom-1	Atom-2	Interatomic distance (Å)	Clash overlap (Å)
1:A:677:GLU:HG3	1:A:717:LYS:HB3	1.83	0.61
1:A:212:MSE:CE	1:A:615:LEU:HD13	2.30	0.60
1:A:679:LEU:O	1:A:682:VAL:HG13	2.00	0.60
1:A:510:THR:HG21	1:A:513:GLY:H	1.67	0.60
1:A:740:TYR:HA	1:A:743:VAL:CG2	2.30	0.59
1:A:176:GLU:HG3	5:A:1023:HOH:O	2.00	0.59
1:A:646:THR:CG2	1:A:668:ILE:HG22	2.31	0.59
1:A:431:ILE:HG22	1:A:432:LEU:HD13	1.84	0.58
1:A:411:ARG:CZ	1:A:419:ARG:HD2	2.33	0.58
1:A:114:ASP:OD1	1:A:296:ARG:NH2	2.37	0.58
1:A:212:MSE:CE	1:A:615:LEU:HB3	2.24	0.58
1:A:724:GLN:O	1:A:724:GLN:HG2	2.03	0.58
1:A:36:LYS:HE3	1:A:40:ASP:OD2	2.04	0.58
1:A:413:ALA:O	1:A:414:THR:C	2.41	0.58
1:A:510:THR:HG21	1:A:513:GLY:HA3	1.86	0.58
1:A:3:SER:OG	1:A:54:THR:HA	2.03	0.58
1:A:302:ASP:HA	1:A:384:LEU:HD11	1.85	0.57
1:A:531:ASP:HA	1:A:582:GLN:NE2	2.05	0.57
1:A:689:TYR:CE2	1:A:691:ALA:HB3	2.40	0.57
1:A:10:ARG:HE	1:A:516:GLN:HE22	1.52	0.57
1:A:481:LEU:HB2	1:A:751:VAL:CG2	2.34	0.57
1:A:412:ARG:O	1:A:414:THR:N	2.39	0.56
1:A:477:LEU:HD22	1:A:486:LEU:HD22	1.86	0.56
1:A:724:GLN:O	1:A:725:ASN:HB3	2.05	0.56
1:A:521:ARG:HE	1:A:522:CYS:N	2.04	0.56
1:A:350:TRP:CD1	1:A:387:ARG:HB2	2.40	0.56
1:A:356:GLN:O	1:A:360:GLU:HG3	2.06	0.55
1:A:67:GLN:O	1:A:70:ASP:HB2	2.06	0.55
1:A:445:GLU:O	1:A:446:LEU:HD13	2.07	0.55
1:A:487:VAL:HG12	1:A:488:HIS:N	2.21	0.55
1:A:242:THR:HG22	5:A:936:HOH:O	2.06	0.55
1:A:700:ILE:HD11	1:A:733:CYS:HB3	1.88	0.55
1:A:317:VAL:O	1:A:319:LYS:N	2.35	0.55
1:A:132:TYR:CZ	1:A:191:VAL:HG22	2.42	0.55
1:A:211:VAL:CG2	1:A:212:MSE:HE3	2.35	0.55
1:A:99:ARG:C	1:A:106:ALA:HB2	2.27	0.55
1:A:95:PHE:O	1:A:99:ARG:HG3	2.07	0.54
1:A:11:MSE:CE	1:A:17:LEU:HD23	2.37	0.54
1:A:423:GLN:NE2	1:A:643:GLN:HA	2.22	0.54
1:A:510:THR:CG2	1:A:513:GLY:N	2.65	0.54
1:A:395:ASN:C	1:A:397:GLY:H	2.11	0.54

Continued on next page...

Continued from previous page...

Atom-1	Atom-2	Interatomic distance (Å)	Clash overlap (Å)
1:A:45:ILE:CG2	1:A:49:MSE:HE2	2.37	0.53
1:A:330:LEU:O	1:A:333:THR:HG22	2.09	0.53
1:A:351:MSE:HE2	1:A:353:PHE:HE1	1.73	0.53
1:A:411:ARG:HB2	1:A:419:ARG:NH1	2.23	0.53
1:A:638:VAL:HG22	1:A:642:THR:HB	1.91	0.53
1:A:8:TYR:CD2	1:A:9:PRO:HD2	2.44	0.53
1:A:424:GLN:HE22	1:A:429:LEU:H	1.57	0.53
1:A:35:GLN:HE21	1:A:35:GLN:HA	1.72	0.53
1:A:412:ARG:HA	1:A:412:ARG:NE	2.24	0.53
1:A:67:GLN:HB3	5:A:941:HOH:O	2.09	0.53
1:A:242:THR:CG2	1:A:247:ILE:HD11	2.32	0.52
1:A:477:LEU:HD23	1:A:483:ILE:HD12	1.91	0.52
1:A:560:GLY:HA3	1:A:606:GLU:CD	2.30	0.52
1:A:298:ILE:HG13	1:A:353:PHE:CE1	2.44	0.52
1:A:446:LEU:N	1:A:446:LEU:HD22	2.24	0.52
1:A:721:VAL:HG23	1:A:722:LEU:HG	1.91	0.52
1:A:482:ASP:O	1:A:483:ILE:O	2.28	0.52
1:A:510:THR:HG21	1:A:513:GLY:N	2.24	0.52
1:A:405:LEU:O	1:A:407:GLY:N	2.42	0.52
1:A:212:MSE:HE1	1:A:615:LEU:CD1	2.38	0.52
1:A:468:LYS:HE2	1:A:472:LYS:NZ	2.24	0.52
1:A:739:LYS:NZ	1:A:741:THR:HG23	2.25	0.52
1:A:444:VAL:CG2	1:A:445:GLU:H	2.20	0.52
1:A:476:ASP:O	1:A:480:GLU:CB	2.58	0.52
1:A:468:LYS:HE2	1:A:472:LYS:HZ2	1.75	0.52
1:A:262:THR:HA	1:A:286:LYS:HD2	1.91	0.51
1:A:487:VAL:HG12	1:A:489:GLY:H	1.75	0.51
1:A:431:ILE:HG22	1:A:432:LEU:CD1	2.41	0.51
1:A:498:GLU:HG2	1:A:509:PHE:CE2	2.44	0.51
1:A:755:LYS:O	1:A:758:ARG:HB2	2.11	0.51
1:A:481:LEU:HG	1:A:483:ILE:HG13	1.93	0.51
1:A:495:ASP:HB3	1:A:498:GLU:HB2	1.91	0.51
1:A:711:ILE:HG21	1:A:750:MSE:HA	1.92	0.51
1:A:751:VAL:CG1	1:A:752:ASP:N	2.74	0.51
1:A:554:MSE:HE1	5:A:1041:HOH:O	2.10	0.51
1:A:480:GLU:O	1:A:482:ASP:N	2.44	0.51
1:A:510:THR:HG21	1:A:513:GLY:CA	2.40	0.51
1:A:480:GLU:HG3	1:A:481:LEU:HD23	1.92	0.51
1:A:481:LEU:CD1	1:A:483:ILE:HG12	2.40	0.51
1:A:479:GLU:HG3	1:A:480:GLU:N	2.26	0.50
1:A:700:ILE:HD13	1:A:734:GLY:O	2.12	0.50

Continued on next page...

Continued from previous page...

Atom-1	Atom-2	Interatomic distance (Å)	Clash overlap (Å)
1:A:69:LEU:HD13	1:A:94:TYR:CE1	2.46	0.50
1:A:469:GLU:HG3	1:A:473:LYS:HE3	1.94	0.50
1:A:468:LYS:HG2	1:A:472:LYS:HZ1	1.75	0.50
1:A:684:ARG:HH11	1:A:684:ARG:HG2	1.76	0.50
1:A:427:LEU:O	1:A:429:LEU:N	2.41	0.50
1:A:545:MSE:HG3	5:A:875:HOH:O	2.11	0.50
1:A:481:LEU:HD21	1:A:747:LEU:HB3	1.93	0.50
1:A:714:ARG:CB	1:A:714:ARG:HH11	2.10	0.50
1:A:635:ASN:CB	1:A:644:ILE:HD13	2.42	0.50
1:A:402:ALA:O	1:A:403:ALA:HB2	2.11	0.49
1:A:705:ILE:CD1	1:A:742:GLU:HA	2.42	0.49
1:A:650:TYR:O	1:A:671:GLU:HB2	2.12	0.49
1:A:11:MSE:HE3	1:A:17:LEU:HD23	1.95	0.49
1:A:702:SER:OG	1:A:704:ARG:HG2	2.12	0.49
1:A:469:GLU:O	1:A:473:LYS:HG3	2.13	0.49
1:A:521:ARG:CA	1:A:521:ARG:HE	2.26	0.49
1:A:480:GLU:OE1	1:A:481:LEU:HD23	2.13	0.49
1:A:481:LEU:CB	1:A:751:VAL:CG1	2.82	0.49
1:A:606:GLU:OE1	1:A:606:GLU:HA	2.12	0.48
1:A:74:MSE:HA	1:A:134:SER:HB3	1.95	0.48
1:A:705:ILE:HD11	1:A:742:GLU:HA	1.96	0.48
1:A:149:VAL:O	1:A:149:VAL:HG13	2.14	0.48
1:A:437:ILE:HG22	1:A:437:ILE:O	2.13	0.48
1:A:434:THR:OG1	1:A:483:ILE:HA	2.13	0.48
1:A:396:GLU:HA	1:A:396:GLU:OE1	2.13	0.48
1:A:442:GLN:OE1	1:A:736:LYS:HE3	2.14	0.48
1:A:211:VAL:HG12	1:A:242:THR:HG23	1.95	0.48
1:A:470:GLU:O	1:A:474:VAL:HG23	2.14	0.48
1:A:657:ILE:HD11	1:A:683:PHE:CD1	2.48	0.48
1:A:748:LYS:NZ	1:A:748:LYS:HB2	2.29	0.48
1:A:500:PHE:O	1:A:504:LEU:HG	2.14	0.48
1:A:481:LEU:O	1:A:482:ASP:HB2	2.14	0.47
1:A:534:ARG:HD3	1:A:590:GLU:HG2	1.97	0.47
1:A:733:CYS:SG	1:A:734:GLY:N	2.87	0.47
1:A:81:ARG:HD2	1:A:104:VAL:HG13	1.96	0.47
1:A:100:GLY:N	1:A:106:ALA:HB2	2.29	0.47
1:A:660:ILE:O	1:A:663:MSE:HB2	2.15	0.47
1:A:191:VAL:O	1:A:195:LEU:HD22	2.15	0.47
1:A:444:VAL:CG2	1:A:445:GLU:N	2.77	0.47
1:A:471:ILE:O	1:A:475:VAL:HG23	2.15	0.47
1:A:724:GLN:O	1:A:724:GLN:CG	2.63	0.47

Continued on next page...

Continued from previous page...

Atom-1	Atom-2	Interatomic distance (Å)	Clash overlap (Å)
1:A:467:ILE:HG12	1:A:545:MSE:SE	2.64	0.47
1:A:656:ILE:O	1:A:660:ILE:HD13	2.15	0.46
1:A:647:HIS:ND1	1:A:669:THR:HG23	2.11	0.46
1:A:635:ASN:HA	5:A:892:HOH:O	2.14	0.46
1:A:610:ARG:NH2	1:A:652:HIS:O	2.39	0.46
1:A:288:LEU:HD23	1:A:288:LEU:C	2.35	0.46
1:A:319:LYS:O	1:A:320:ASP:HB2	2.14	0.46
1:A:6:VAL:HG13	1:A:326:THR:OG1	2.15	0.46
1:A:395:ASN:OD1	1:A:396:GLU:N	2.48	0.46
1:A:689:TYR:CZ	1:A:691:ALA:HB3	2.51	0.46
1:A:718:MSE:O	1:A:721:VAL:HG22	2.15	0.46
1:A:471:ILE:HB	1:A:549:MSE:HE1	1.98	0.46
1:A:294:ASP:OD2	1:A:297:ASN:HB2	2.16	0.46
1:A:350:TRP:NE1	1:A:387:ARG:HB2	2.31	0.46
1:A:480:GLU:HG3	1:A:481:LEU:CD2	2.46	0.46
1:A:610:ARG:O	1:A:610:ARG:HG2	2.16	0.46
1:A:671:GLU:HG3	5:A:773:HOH:O	2.16	0.46
1:A:481:LEU:HD22	1:A:747:LEU:O	2.15	0.45
1:A:79:PRO:CG	1:A:107:MSE:HE3	2.45	0.45
1:A:350:TRP:CZ2	1:A:387:ARG:HA	2.52	0.45
1:A:310:LEU:HB3	1:A:368:LEU:HD11	1.99	0.45
1:A:557:MSE:CE	4:A:772:MET:N	2.80	0.45
1:A:424:GLN:HE22	1:A:429:LEU:N	2.14	0.45
1:A:68:VAL:O	1:A:71:THR:HG23	2.16	0.45
1:A:707:SER:OG	1:A:710:GLU:HG3	2.17	0.45
1:A:212:MSE:HA	1:A:212:MSE:HE2	1.97	0.45
1:A:243:TYR:O	1:A:244:PHE:HB2	2.17	0.45
1:A:343:LEU:O	1:A:348:LYS:HE3	2.17	0.45
1:A:585:LEU:HD12	1:A:585:LEU:HA	1.77	0.45
1:A:709:GLU:HG3	1:A:710:GLU:N	2.32	0.45
1:A:242:THR:HG21	1:A:247:ILE:CD1	2.35	0.44
1:A:15:ARG:HD3	1:A:514:TRP:CG	2.52	0.44
1:A:471:ILE:HB	1:A:549:MSE:CE	2.47	0.44
1:A:635:ASN:HB2	1:A:644:ILE:CD1	2.47	0.44
1:A:481:LEU:HB2	1:A:751:VAL:HB	1.99	0.44
1:A:700:ILE:HD13	1:A:733:CYS:HB3	1.97	0.44
1:A:538:MSE:HE2	1:A:590:GLU:CG	2.46	0.44
1:A:555:LYS:HA	1:A:601:VAL:O	2.18	0.44
1:A:657:ILE:CG2	1:A:658:HIS:N	2.80	0.44
1:A:67:GLN:HG2	1:A:68:VAL:N	2.33	0.44
1:A:165:SER:O	1:A:166:LYS:HD3	2.17	0.44

Continued on next page...

Continued from previous page...

Atom-1	Atom-2	Interatomic distance (Å)	Clash overlap (Å)
1:A:468:LYS:O	1:A:471:ILE:HG22	2.18	0.44
1:A:540:VAL:HG21	1:A:593:ASP:HB3	2.00	0.44
1:A:122:PRO:HB2	1:A:165:SER:OG	2.17	0.43
1:A:672:ASN:O	1:A:673:SER:CB	2.59	0.43
1:A:481:LEU:HD22	1:A:747:LEU:C	2.38	0.43
1:A:532:VAL:N	1:A:582:GLN:NE2	2.64	0.43
1:A:477:LEU:HD23	1:A:483:ILE:CD1	2.47	0.43
1:A:645:HIS:ND1	1:A:667:VAL:HB	2.34	0.43
1:A:5:ILE:HD12	1:A:54:THR:HG21	2.00	0.43
1:A:547:GLN:CD	1:A:554:MSE:HB2	2.39	0.43
1:A:605:ASP:CB	1:A:647:HIS:HB3	2.47	0.43
1:A:178:LEU:HD12	1:A:178:LEU:HA	1.87	0.43
1:A:438:GLY:O	1:A:487:VAL:HG11	2.19	0.43
1:A:490:GLU:N	1:A:491:PRO:CD	2.82	0.43
1:A:583:ILE:O	1:A:587:ILE:HG12	2.19	0.43
1:A:712:ALA:CA	1:A:753:ALA:HB1	2.49	0.43
1:A:411:ARG:HB2	1:A:419:ARG:HH12	1.83	0.43
1:A:299:TRP:CZ2	1:A:571:ARG:HA	2.54	0.42
1:A:717:LYS:O	1:A:720:ALA:HB3	2.18	0.42
1:A:247:ILE:HD12	1:A:247:ILE:N	2.34	0.42
1:A:243:TYR:HA	1:A:267:ASP:HB2	2.01	0.42
1:A:298:ILE:O	1:A:298:ILE:HG23	2.17	0.42
1:A:411:ARG:O	1:A:412:ARG:C	2.58	0.42
1:A:639:GLN:NE2	1:A:639:GLN:HA	2.35	0.42
1:A:121:VAL:HA	1:A:122:PRO:HD3	1.95	0.42
1:A:114:ASP:OD2	1:A:270:ARG:NH1	2.52	0.42
1:A:343:LEU:O	1:A:348:LYS:CD	2.64	0.42
1:A:714:ARG:O	1:A:718:MSE:HB2	2.20	0.42
1:A:721:VAL:HG23	1:A:722:LEU:N	2.34	0.42
1:A:299:TRP:CE2	1:A:571:ARG:HA	2.55	0.42
1:A:437:ILE:HD12	1:A:669:THR:HG21	2.02	0.42
1:A:712:ALA:HA	1:A:753:ALA:HB1	2.02	0.42
1:A:473:LYS:O	1:A:477:LEU:HD12	2.20	0.42
1:A:8:TYR:CG	1:A:9:PRO:HD2	2.54	0.42
1:A:517:SER:O	1:A:518:TYR:HB3	2.20	0.41
1:A:743:VAL:HG23	1:A:744:LYS:N	2.36	0.41
1:A:461:GLU:N	5:A:900:HOH:O	2.53	0.41
1:A:74:MSE:HE2	1:A:191:VAL:HG11	2.02	0.41
1:A:35:GLN:NE2	1:A:35:GLN:HA	2.36	0.41
1:A:3:SER:HB2	1:A:361:VAL:HG12	2.03	0.41
1:A:599:ILE:HA	5:A:802:HOH:O	2.19	0.41

Continued on next page...

Continued from previous page...

Atom-1	Atom-2	Interatomic distance (Å)	Clash overlap (Å)
1:A:523:VAL:O	1:A:525:PRO:HD3	2.21	0.41
1:A:395:ASN:C	1:A:397:GLY:N	2.73	0.41
1:A:628:VAL:HG13	1:A:663:MSE:HA	2.03	0.41
1:A:77:ALA:HB2	1:A:130:PHE:CE1	2.56	0.41
1:A:307:LEU:HD23	1:A:307:LEU:HA	1.85	0.40
1:A:396:GLU:OE1	1:A:396:GLU:CA	2.70	0.40
1:A:480:GLU:CD	1:A:481:LEU:HD23	2.41	0.40
1:A:89:ILE:HG23	1:A:93:VAL:HB	2.03	0.40
1:A:433:PRO:HA	1:A:484:ASP:OD2	2.20	0.40
1:A:242:THR:HB	1:A:265:GLY:O	2.21	0.40
1:A:79:PRO:HG2	1:A:107:MSE:HE3	2.04	0.40

There are no symmetry-related clashes.

5.3 Torsion angles [\(i\)](#)

5.3.1 Protein backbone [\(i\)](#)

In the following table, the Percentiles column shows the percent Ramachandran outliers of the chain as a percentile score with respect to all X-ray entries followed by that with respect to entries of similar resolution.

The Analysed column shows the number of residues for which the backbone conformation was analysed, and the total number of residues.

Mol	Chain	Analysed	Favoured	Allowed	Outliers	Percentiles
1	A	742/765 (97%)	672 (91%)	48 (6%)	22 (3%)	4 3

All (22) Ramachandran outliers are listed below:

Mol	Chain	Res	Type
1	A	284	GLU
1	A	318	GLY
1	A	403	ALA
1	A	413	ALA
1	A	656	ILE
1	A	673	SER
1	A	725	ASN
1	A	408	SER
1	A	412	ARG
1	A	414	THR

Continued on next page...

Continued from previous page...

Mol	Chain	Res	Type
1	A	445	GLU
1	A	481	LEU
1	A	548	SER
1	A	396	GLU
1	A	406	LYS
1	A	443	THR
1	A	483	ILE
1	A	428	ASN
1	A	319	LYS
1	A	444	VAL
1	A	317	VAL
1	A	726	ILE

5.3.2 Protein sidechains [i](#)

In the following table, the Percentiles column shows the percent sidechain outliers of the chain as a percentile score with respect to all X-ray entries followed by that with respect to entries of similar resolution.

The Analysed column shows the number of residues for which the sidechain conformation was analysed, and the total number of residues.

Mol	Chain	Analysed	Rotameric	Outliers	Percentiles
1	A	622/619 (100%)	580 (93%)	42 (7%)	16 20

All (42) residues with a non-rotameric sidechain are listed below:

Mol	Chain	Res	Type
1	A	6	VAL
1	A	10	ARG
1	A	11	MSE
1	A	34	LEU
1	A	61	THR
1	A	69	LEU
1	A	71	THR
1	A	78	VAL
1	A	99	ARG
1	A	121	VAL
1	A	147	LEU
1	A	159	VAL
1	A	172	ASP
1	A	176	GLU

Continued on next page...

Continued from previous page...

Mol	Chain	Res	Type
1	A	178	LEU
1	A	185	LEU
1	A	195	LEU
1	A	205	LEU
1	A	214	LEU
1	A	229	LEU
1	A	233	LEU
1	A	239	LEU
1	A	317	VAL
1	A	337	LEU
1	A	424	GLN
1	A	446	LEU
1	A	463	TYR
1	A	465	LYS
1	A	492	GLU
1	A	510	THR
1	A	585	LEU
1	A	593	ASP
1	A	616	ARG
1	A	632	ARG
1	A	656	ILE
1	A	657	ILE
1	A	676	ASP
1	A	677	GLU
1	A	685	GLU
1	A	724	GLN
1	A	738	ARG
1	A	739	LYS

Some sidechains can be flipped to improve hydrogen bonding and reduce clashes. All (11) such sidechains are listed below:

Mol	Chain	Res	Type
1	A	35	GLN
1	A	116	ASN
1	A	220	GLN
1	A	424	GLN
1	A	478	GLN
1	A	516	GLN
1	A	574	GLN
1	A	582	GLN
1	A	639	GLN
1	A	652	HIS

Continued on next page...

Continued from previous page...

Mol	Chain	Res	Type
1	A	749	ASN

5.3.3 RNA [i](#)

There are no RNA molecules in this entry.

5.4 Non-standard residues in protein, DNA, RNA chains [i](#)

There are no non-standard protein/DNA/RNA residues in this entry.

5.5 Carbohydrates [i](#)

There are no carbohydrates in this entry.

5.6 Ligand geometry [i](#)

Of 7 ligands modelled in this entry, 2 are monoatomic - leaving 5 for Mogul analysis.

In the following table, the Counts columns list the number of bonds (or angles) for which Mogul statistics could be retrieved, the number of bonds (or angles) that are observed in the model and the number of bonds (or angles) that are defined in the Chemical Component Dictionary. The Link column lists molecule types, if any, to which the group is linked. The Z score for a bond length (or angle) is the number of standard deviations the observed value is removed from the expected value. A bond length (or angle) with $|Z| > 2$ is considered an outlier worth inspection. RMSZ is the root-mean-square of all Z scores of the bond lengths (or angles).

Mol	Type	Chain	Res	Link	Bond lengths			Bond angles		
					Counts	RMSZ	$\# Z > 2$	Counts	RMSZ	$\# Z > 2$
3	SO4	A	770	-	4,4,4	0.31	0	6,6,6	0.05	0
3	SO4	A	768	-	4,4,4	0.30	0	6,6,6	0.06	0
3	SO4	A	771	-	4,4,4	0.32	0	6,6,6	0.12	0
3	SO4	A	769	-	4,4,4	0.28	0	6,6,6	0.09	0

There are no bond length outliers.

There are no bond angle outliers.

There are no chirality outliers.

There are no torsion outliers.

There are no ring outliers.

No monomer is involved in short contacts.

5.7 Other polymers

There are no such residues in this entry.

5.8 Polymer linkage issues

There are no chain breaks in this entry.

6 Fit of model and data [i](#)

6.1 Protein, DNA and RNA chains [i](#)

In the following table, the column labelled '#RSRZ> 2' contains the number (and percentage) of RSRZ outliers, followed by percent RSRZ outliers for the chain as percentile scores relative to all X-ray entries and entries of similar resolution. The OWAB column contains the minimum, median, 95th percentile and maximum values of the occupancy-weighted average B-factor per residue. The column labelled 'Q< 0.9' lists the number of (and percentage) of residues with an average occupancy less than 0.9.

Mol	Chain	Analysed	<RSRZ>	#RSRZ>2	OWAB(Å ²)	Q<0.9
1	A	728/765 (95%)	0.10	22 (3%) 50 57	24, 42, 67, 94	0

All (22) RSRZ outliers are listed below:

Mol	Chain	Res	Type	RSRZ
1	A	463	TYR	7.2
1	A	412	ARG	4.5
1	A	442	GLN	4.2
1	A	481	LEU	4.0
1	A	447	ARG	3.7
1	A	465	LYS	3.5
1	A	407	GLY	3.5
1	A	435	THR	3.3
1	A	399	GLN	3.2
1	A	173	LYS	3.1
1	A	443	THR	2.9
1	A	759	SER	2.8
1	A	284	GLU	2.5
1	A	174	SER	2.4
1	A	7	GLY	2.4
1	A	172	ASP	2.4
1	A	646	THR	2.3
1	A	156	VAL	2.3
1	A	319	LYS	2.2
1	A	669	THR	2.1
1	A	206	ASP	2.0
1	A	400	LYS	2.0

6.2 Non-standard residues in protein, DNA, RNA chains [i](#)

There are no non-standard protein/DNA/RNA residues in this entry.

6.3 Carbohydrates [i](#)

There are no carbohydrates in this entry.

6.4 Ligands [i](#)

In the following table, the Atoms column lists the number of modelled atoms in the group and the number defined in the chemical component dictionary. The B-factors column lists the minimum, median, 95th percentile and maximum values of B factors of atoms in the group. The column labelled 'Q< 0.9' lists the number of atoms with occupancy less than 0.9.

Mol	Type	Chain	Res	Atoms	RSCC	RSR	B-factors(Å ²)	Q<0.9
3	SO4	A	770	5/5	0.88	0.19	94,94,95,95	0
4	MET	A	772	9/9	0.93	0.17	36,38,39,43	0
3	SO4	A	771	5/5	0.96	0.12	63,64,65,65	0
3	SO4	A	769	5/5	0.96	0.10	68,69,69,70	0
3	SO4	A	768	5/5	0.97	0.16	83,84,85,85	0
2	ZN	A	766	1/1	0.98	0.09	38,38,38,38	0
2	ZN	A	767	1/1	0.99	0.09	34,34,34,34	0

6.5 Other polymers [i](#)

There are no such residues in this entry.