



wwPDB X-ray Structure Validation Summary Report

Oct 4, 2023 – 07:42 PM EDT

PDB ID : 6TZ7
Title : Crystal Structure of Aspergillus fumigatus Calcineurin A, Calcineurin B, FKBP12 and FK506 (Tacrolimus)
Authors : Fox III, D.; Horanyi, P.S.
Deposited on : 2019-08-10
Resolution : 2.50 Å (reported)

This is a wwPDB X-ray Structure Validation Summary Report for a publicly released PDB entry.

We welcome your comments at validation@mail.wwpdb.org

A user guide is available at

<https://www.wwpdb.org/validation/2017/XrayValidationReportHelp>

with specific help available everywhere you see the  symbol.

The types of validation reports are described at

<http://www.wwpdb.org/validation/2017/FAQs#types>.

The following versions of software and data (see [references](#) ) were used in the production of this report:

MolProbity : **FAILED**
Mogul : 1.8.5 (274361), CSD as541be (2020)
Xtrriage (Phenix) : 1.13
EDS : **FAILED**
buster-report : 1.1.7 (2018)
Percentile statistics : 20191225.v01 (using entries in the PDB archive December 25th 2019)
Ideal geometry (proteins) : Engh & Huber (2001)
Ideal geometry (DNA, RNA) : Parkinson et al. (1996)
Validation Pipeline (wwPDB-VP) : 2.35.1

1 Overall quality at a glance

The following experimental techniques were used to determine the structure:

X-RAY DIFFRACTION

The reported resolution of this entry is 2.50 Å.

There are no overall percentile quality scores available for this entry.

MolProbity and EDS failed to run properly - the sequence quality summary graphics cannot be shown.

2 Entry composition [i](#)

There are 10 unique types of molecules in this entry. The entry contains 4821 atoms, of which 0 are hydrogens and 0 are deuteriums.

In the tables below, the ZeroOcc column contains the number of atoms modelled with zero occupancy, the AltConf column contains the number of residues with at least one atom in alternate conformation and the Trace column contains the number of residues modelled with at most 2 atoms.

- Molecule 1 is a protein called Serine/threonine-protein phosphatase 2B catalytic subunit.

Mol	Chain	Residues	Atoms					ZeroOcc	AltConf	Trace
			Total	C	N	O	S			
1	A	358	2879	1868	477	514	20	0	1	0

There are 19 discrepancies between the modelled and reference sequences:

Chain	Residue	Modelled	Actual	Comment	Reference
A	-17	MET	-	expression tag	UNP Q4WUR1
A	-16	GLY	-	expression tag	UNP Q4WUR1
A	-15	SER	-	expression tag	UNP Q4WUR1
A	-14	SER	-	expression tag	UNP Q4WUR1
A	-13	HIS	-	expression tag	UNP Q4WUR1
A	-12	HIS	-	expression tag	UNP Q4WUR1
A	-11	HIS	-	expression tag	UNP Q4WUR1
A	-10	HIS	-	expression tag	UNP Q4WUR1
A	-9	HIS	-	expression tag	UNP Q4WUR1
A	-8	HIS	-	expression tag	UNP Q4WUR1
A	-7	SER	-	expression tag	UNP Q4WUR1
A	-6	SER	-	expression tag	UNP Q4WUR1
A	-5	GLY	-	expression tag	UNP Q4WUR1
A	-4	LEU	-	expression tag	UNP Q4WUR1
A	-3	VAL	-	expression tag	UNP Q4WUR1
A	-2	PRO	-	expression tag	UNP Q4WUR1
A	-1	ARG	-	expression tag	UNP Q4WUR1
A	0	GLY	-	expression tag	UNP Q4WUR1
A	1	SER	-	expression tag	UNP Q4WUR1

- Molecule 2 is a protein called Calcineurin Ca²⁺-binding regulatory subunit CnaB.

Mol	Chain	Residues	Atoms					ZeroOcc	AltConf	Trace
			Total	C	N	O	S			
2	B	122	875	552	141	176	6	0	0	0

There is a discrepancy between the modelled and reference sequences:

Chain	Residue	Modelled	Actual	Comment	Reference
B	20	MET	-	expression tag	UNP Q4WDF2

- Molecule 3 is a protein called FK506-binding protein 1A.

Mol	Chain	Residues	Atoms					ZeroOcc	AltConf	Trace
			Total	C	N	O	S			
3	C	117	889	565	151	172	1	0	1	0

There are 16 discrepancies between the modelled and reference sequences:

Chain	Residue	Modelled	Actual	Comment	Reference
C	-14	MET	-	expression tag	UNP Q4WLV6
C	-13	GLY	-	expression tag	UNP Q4WLV6
C	-12	LEU	-	expression tag	UNP Q4WLV6
C	-11	ASN	-	expression tag	UNP Q4WLV6
C	-10	ASP	-	expression tag	UNP Q4WLV6
C	-9	ILE	-	expression tag	UNP Q4WLV6
C	-8	PHE	-	expression tag	UNP Q4WLV6
C	-7	GLU	-	expression tag	UNP Q4WLV6
C	-6	ALA	-	expression tag	UNP Q4WLV6
C	-5	GLN	-	expression tag	UNP Q4WLV6
C	-4	LYS	-	expression tag	UNP Q4WLV6
C	-3	ILE	-	expression tag	UNP Q4WLV6
C	-2	GLU	-	expression tag	UNP Q4WLV6
C	-1	TRP	-	expression tag	UNP Q4WLV6
C	0	HIS	-	expression tag	UNP Q4WLV6
C	1	GLU	-	expression tag	UNP Q4WLV6

- Molecule 4 is ZINC ION (three-letter code: ZN) (formula: Zn).

Mol	Chain	Residues	Atoms		ZeroOcc	AltConf
4	A	1	Total	Zn	0	0
			1	1		

- Molecule 5 is FE (III) ION (three-letter code: FE) (formula: Fe).

Mol	Chain	Residues	Atoms		ZeroOcc	AltConf
5	A	1	Total	Fe	0	0
			1	1		

- Molecule 6 is PHOSPHATE ION (three-letter code: PO4) (formula: O₄P).



Mol	Chain	Residues	Atoms			ZeroOcc	AltConf
			Total	O	P		
6	A	1	5	4	1	0	0

- Molecule 7 is 1,2-ETHANEDIOL (three-letter code: EDO) (formula: $C_2H_6O_2$).

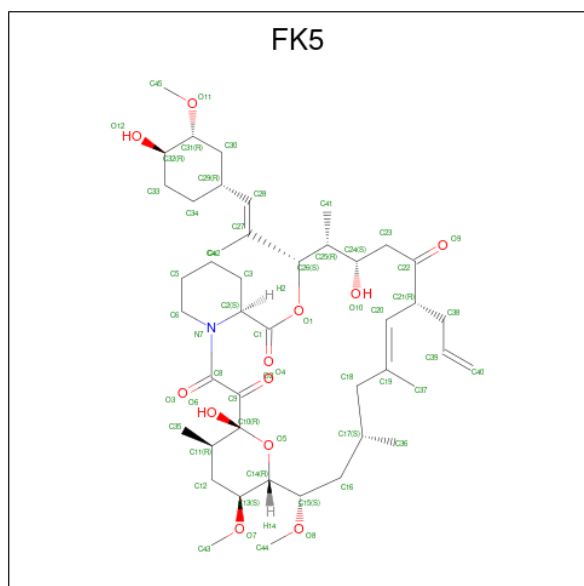


Mol	Chain	Residues	Atoms			ZeroOcc	AltConf
			Total	C	O		
7	A	1	4	2	2	0	0
7	A	1	4	2	2	0	0

- Molecule 8 is CALCIUM ION (three-letter code: CA) (formula: Ca).

Mol	Chain	Residues	Atoms		ZeroOcc	AltConf
8	B	3	Total	Ca	0	0
			3	3		

- Molecule 9 is 8-DEETHYL-8-[BUT-3-ENYL]-ASCOMYCIN (three-letter code: FK5) (formula: $C_{44}H_{69}NO_{12}$) (labeled as "Ligand of Interest" by depositor).



Mol	Chain	Residues	Atoms			ZeroOcc	AltConf	
9	C	1	Total	C	N	O	0	0
			57	44	1	12		

- Molecule 10 is water.

Mol	Chain	Residues	Atoms		ZeroOcc	AltConf
10	A	76	Total	O	0	0
			76	76		
10	B	8	Total	O	0	0
			8	8		
10	C	19	Total	O	0	0
			19	19		

MolProbity and EDS failed to run properly - this section is therefore empty.

3 Data and refinement statistics

EDS failed to run properly - this section is therefore incomplete.

Property	Value	Source
Space group	P 1 21 1	Depositor
Cell constants a, b, c, α , β , γ	59.24Å 94.46Å 69.83Å 90.00° 109.28° 90.00°	Depositor
Resolution (Å)	48.12 – 2.50	Depositor
% Data completeness (in resolution range)	99.9 (48.12-2.50)	Depositor
R_{merge}	0.10	Depositor
R_{sym}	(Not available)	Depositor
$\langle I/\sigma(I) \rangle$ ¹	2.42 (at 2.51Å)	Xtrriage
Refinement program	PHENIX dev_1803	Depositor
R, R_{free}	0.200 , 0.232	Depositor
Wilson B-factor (Å ²)	38.3	Xtrriage
Anisotropy	0.296	Xtrriage
L-test for twinning ²	$\langle L \rangle = 0.49$, $\langle L^2 \rangle = 0.32$	Xtrriage
Estimated twinning fraction	No twinning to report.	Xtrriage
Total number of atoms	4821	wwPDB-VP
Average B, all atoms (Å ²)	46.0	wwPDB-VP

Xtrriage's analysis on translational NCS is as follows: *The largest off-origin peak in the Patterson function is 5.39% of the height of the origin peak. No significant pseudotranslation is detected.*

¹ Intensities estimated from amplitudes.

² Theoretical values of $\langle |L| \rangle$, $\langle L^2 \rangle$ for acentric reflections are 0.5, 0.333 respectively for untwinned datasets, and 0.375, 0.2 for perfectly twinned datasets.

4 Model quality [i](#)

4.1 Standard geometry [i](#)

MolProbity failed to run properly - this section is therefore empty.

4.2 Too-close contacts [i](#)

MolProbity failed to run properly - this section is therefore empty.

4.3 Torsion angles [i](#)

4.3.1 Protein backbone [i](#)

MolProbity failed to run properly - this section is therefore empty.

4.3.2 Protein sidechains [i](#)

MolProbity failed to run properly - this section is therefore empty.

4.3.3 RNA [i](#)

MolProbity failed to run properly - this section is therefore empty.

4.4 Non-standard residues in protein, DNA, RNA chains [i](#)

There are no non-standard protein/DNA/RNA residues in this entry.

4.5 Carbohydrates [i](#)

There are no monosaccharides in this entry.

4.6 Ligand geometry [i](#)

Of 9 ligands modelled in this entry, 5 are monoatomic - leaving 4 for Mogul analysis.

In the following table, the Counts columns list the number of bonds (or angles) for which Mogul statistics could be retrieved, the number of bonds (or angles) that are observed in the model and the number of bonds (or angles) that are defined in the Chemical Component Dictionary. The Link column lists molecule types, if any, to which the group is linked. The Z score for a bond

length (or angle) is the number of standard deviations the observed value is removed from the expected value. A bond length (or angle) with $|Z| > 2$ is considered an outlier worth inspection. RMSZ is the root-mean-square of all Z scores of the bond lengths (or angles).

Mol	Type	Chain	Res	Link	Bond lengths			Bond angles		
					Counts	RMSZ	# Z > 2	Counts	RMSZ	# Z > 2
7	EDO	A	405	-	3,3,3	0.45	0	2,2,2	0.36	0
7	EDO	A	404	-	3,3,3	0.46	0	2,2,2	0.30	0
6	PO4	A	403	5,4	4,4,4	0.92	0	6,6,6	0.41	0
9	FK5	C	201	-	54,60,60	3.55	10 (18%)	64,86,86	1.61	10 (15%)

In the following table, the Chirals column lists the number of chiral outliers, the number of chiral centers analysed, the number of these observed in the model and the number defined in the Chemical Component Dictionary. Similar counts are reported in the Torsion and Rings columns. '2' means no outliers of that kind were identified.

Mol	Type	Chain	Res	Link	Chirals	Torsions	Rings
7	EDO	A	405	-	-	0/1/1/1	-
7	EDO	A	404	-	-	0/1/1/1	-
9	FK5	C	201	-	-	5/68/114/114	0/3/4/4

The worst 5 of 10 bond length outliers are listed below:

Mol	Chain	Res	Type	Atoms	Z	Observed(Å)	Ideal(Å)
9	C	201	FK5	O9-C22	11.44	1.41	1.21
9	C	201	FK5	O4-C9	10.80	1.41	1.22
9	C	201	FK5	C8-C9	-10.64	1.40	1.53
9	C	201	FK5	C20-C19	9.22	1.47	1.33
9	C	201	FK5	O3-C8	8.66	1.41	1.23

The worst 5 of 10 bond angle outliers are listed below:

Mol	Chain	Res	Type	Atoms	Z	Observed(°)	Ideal(°)
9	C	201	FK5	C21-C20-C19	-6.68	120.80	127.64
9	C	201	FK5	O1-C1-C2	4.91	121.60	110.78
9	C	201	FK5	O1-C26-C25	2.98	109.32	105.91
9	C	201	FK5	O1-C1-O2	-2.66	118.97	123.94
9	C	201	FK5	C42-C27-C26	2.61	120.19	115.68

There are no chirality outliers.

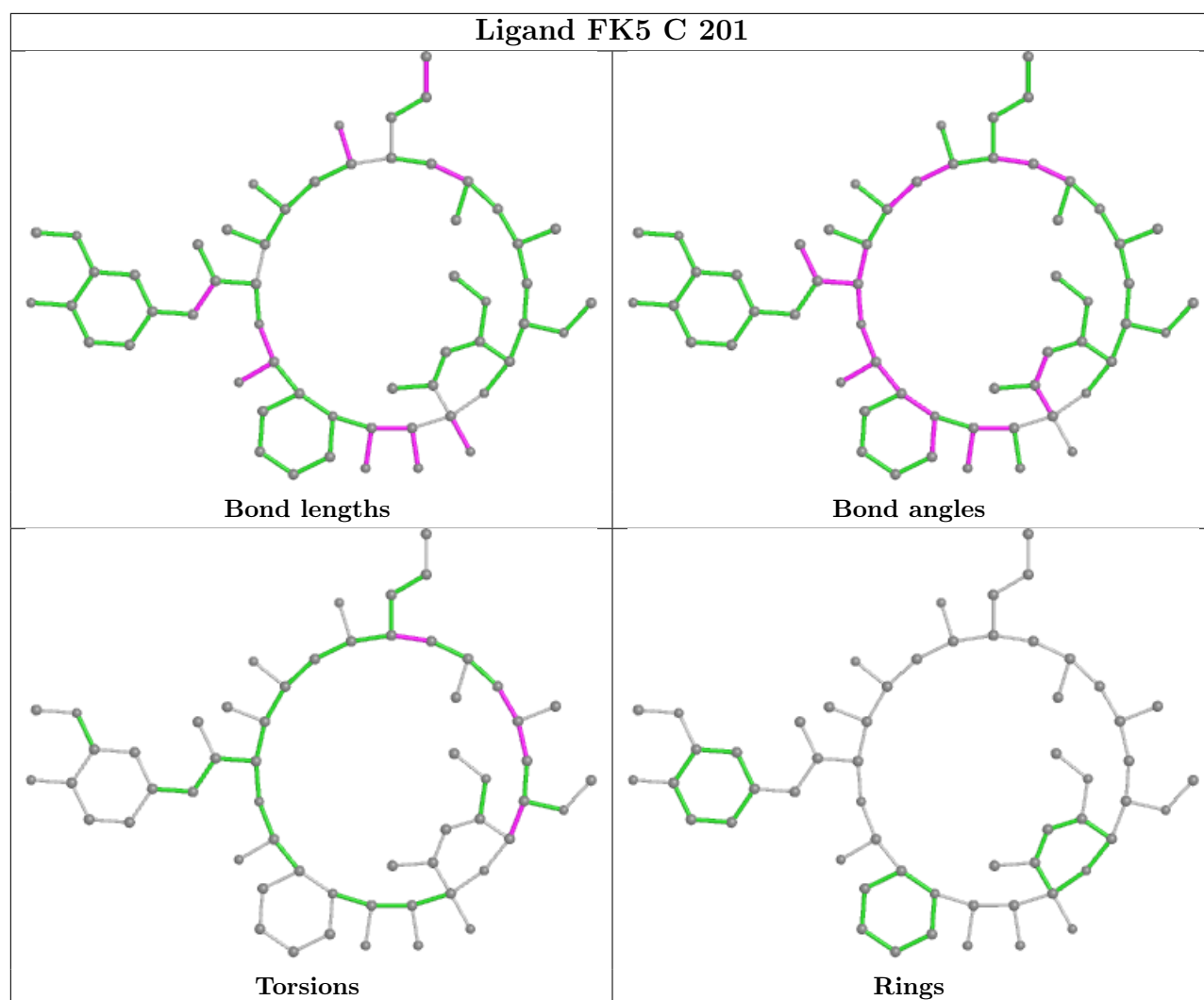
All (5) torsion outliers are listed below:

Mol	Chain	Res	Type	Atoms
9	C	201	FK5	C15-C16-C17-C36
9	C	201	FK5	C36-C17-C18-C19
9	C	201	FK5	C19-C20-C21-C22
9	C	201	FK5	C13-C14-C15-O8
9	C	201	FK5	C13-C14-C15-C16

There are no ring outliers.

No monomer is involved in short contacts.

The following is a two-dimensional graphical depiction of Mogul quality analysis of bond lengths, bond angles, torsion angles, and ring geometry for all instances of the Ligand of Interest. In addition, ligands with molecular weight > 250 and outliers as shown on the validation Tables will also be included. For torsion angles, if less than 5% of the Mogul distribution of torsion angles is within 10 degrees of the torsion angle in question, then that torsion angle is considered an outlier. Any bond that is central to one or more torsion angles identified as an outlier by Mogul will be highlighted in the graph. For rings, the root-mean-square deviation (RMSD) between the ring in question and similar rings identified by Mogul is calculated over all ring torsion angles. If the average RMSD is greater than 60 degrees and the minimal RMSD between the ring in question and any Mogul-identified rings is also greater than 60 degrees, then that ring is considered an outlier. The outliers are highlighted in purple. The color gray indicates Mogul did not find sufficient equivalents in the CSD to analyse the geometry.



4.7 Other polymers [i](#)

There are no such residues in this entry.

4.8 Polymer linkage issues [i](#)

There are no chain breaks in this entry.

5 Fit of model and data [i](#)

5.1 Protein, DNA and RNA chains [i](#)

EDS failed to run properly - this section is therefore empty.

5.2 Non-standard residues in protein, DNA, RNA chains [i](#)

EDS failed to run properly - this section is therefore empty.

5.3 Carbohydrates [i](#)

EDS failed to run properly - this section is therefore empty.

5.4 Ligands [i](#)

EDS failed to run properly - this section is therefore empty.

5.5 Other polymers [i](#)

EDS failed to run properly - this section is therefore empty.