



Full wwPDB X-ray Structure Validation Report ⓘ

Oct 9, 2023 – 04:12 PM EDT

PDB ID : 7TSO
Title : Structure of human endothelial nitric oxide synthase heme domain in complex with 6-(3-(3,3-difluoroazetid-1-yl)propyl)-4-methylpyridin-2-amine
Authors : Li, H.; Poulos, T.L.
Deposited on : 2022-01-31
Resolution : 2.00 Å(reported)

This is a Full wwPDB X-ray Structure Validation Report for a publicly released PDB entry.

We welcome your comments at validation@mail.wwpdb.org

A user guide is available at

<https://www.wwpdb.org/validation/2017/XrayValidationReportHelp>

with specific help available everywhere you see the ⓘ symbol.

The types of validation reports are described at

<http://www.wwpdb.org/validation/2017/FAQs#types>.

The following versions of software and data (see [references ⓘ](#)) were used in the production of this report:

MolProbity : 4.02b-467
Mogul : 1.8.5 (274361), CSD as541be (2020)
Xtriage (Phenix) : 1.13
EDS : 2.35.1
buster-report : 1.1.7 (2018)
Percentile statistics : 20191225.v01 (using entries in the PDB archive December 25th 2019)
Refmac : 5.8.0158
CCP4 : 7.0.044 (Gargrove)
Ideal geometry (proteins) : Engh & Huber (2001)
Ideal geometry (DNA, RNA) : Parkinson et al. (1996)
Validation Pipeline (wwPDB-VP) : 2.35.1

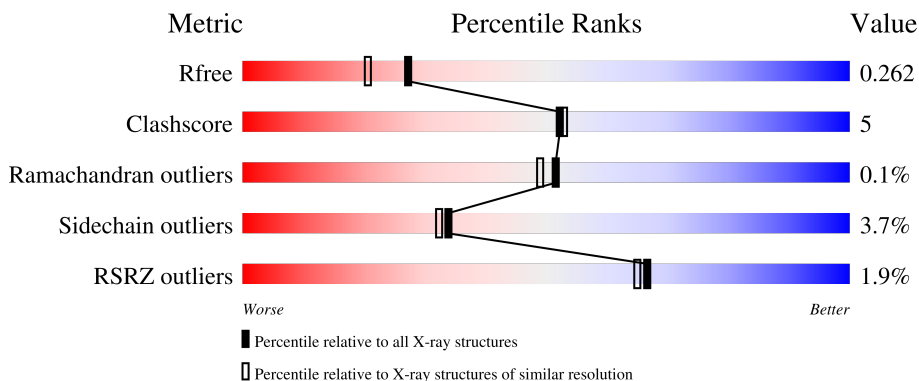
1 Overall quality at a glance i

The following experimental techniques were used to determine the structure:

X-RAY DIFFRACTION

The reported resolution of this entry is 2.00 Å.

Percentile scores (ranging between 0-100) for global validation metrics of the entry are shown in the following graphic. The table shows the number of entries on which the scores are based.



Metric	Whole archive (#Entries)	Similar resolution (#Entries, resolution range(Å))
R_{free}	130704	8085 (2.00-2.00)
Clashscore	141614	9178 (2.00-2.00)
Ramachandran outliers	138981	9054 (2.00-2.00)
Sidechain outliers	138945	9053 (2.00-2.00)
RSRZ outliers	127900	7900 (2.00-2.00)

The table below summarises the geometric issues observed across the polymeric chains and their fit to the electron density. The red, orange, yellow and green segments of the lower bar indicate the fraction of residues that contain outliers for ≥ 3 , 2, 1 and 0 types of geometric quality criteria respectively. A grey segment represents the fraction of residues that are not modelled. The numeric value for each fraction is indicated below the corresponding segment, with a dot representing fractions $\leq 5\%$. The upper red bar (where present) indicates the fraction of residues that have poor fit to the electron density. The numeric value is given above the bar.

Mol	Chain	Length	Quality of chain
1	A	440	<div style="display: flex; align-items: center;"> <div style="width: 5%; height: 10px; background-color: red; margin-right: 5px;"></div> <div style="width: 79%; height: 10px; background-color: green; margin-right: 5px;"></div> <div style="width: 12%; height: 10px; background-color: yellow; margin-right: 5px;"></div> <div style="width: 9%; height: 10px; background-color: grey; margin-right: 5px;"></div> </div> <p style="margin-left: 5px;">5% 79% 12% • 9%</p>
1	B	440	<div style="display: flex; align-items: center;"> <div style="width: 81%; height: 10px; background-color: green; margin-right: 5px;"></div> <div style="width: 10%; height: 10px; background-color: yellow; margin-right: 5px;"></div> <div style="width: 9%; height: 10px; background-color: grey; margin-right: 5px;"></div> </div> <p style="margin-left: 5px;">81% 10% 9%</p>
1	C	440	<div style="display: flex; align-items: center;"> <div style="width: 2%; height: 10px; background-color: red; margin-right: 5px;"></div> <div style="width: 74%; height: 10px; background-color: green; margin-right: 5px;"></div> <div style="width: 17%; height: 10px; background-color: yellow; margin-right: 5px;"></div> <div style="width: 9%; height: 10px; background-color: grey; margin-right: 5px;"></div> </div> <p style="margin-left: 5px;">2% 74% 17% • 9%</p>
1	D	440	<div style="display: flex; align-items: center;"> <div style="width: 81%; height: 10px; background-color: green; margin-right: 5px;"></div> <div style="width: 11%; height: 10px; background-color: yellow; margin-right: 5px;"></div> <div style="width: 9%; height: 10px; background-color: grey; margin-right: 5px;"></div> </div> <p style="margin-left: 5px;">81% 11% 9%</p>

The following table lists non-polymeric compounds, carbohydrate monomers and non-standard

residues in protein, DNA, RNA chains that are outliers for geometric or electron-density-fit criteria:

Mol	Type	Chain	Res	Chirality	Geometry	Clashes	Electron density
6	GOL	A	512	-	X	-	-

2 Entry composition

There are 10 unique types of molecules in this entry. The entry contains 13869 atoms, of which 0 are hydrogens and 0 are deuteriums.

In the tables below, the ZeroOcc column contains the number of atoms modelled with zero occupancy, the AltConf column contains the number of residues with at least one atom in alternate conformation and the Trace column contains the number of residues modelled with at most 2 atoms.

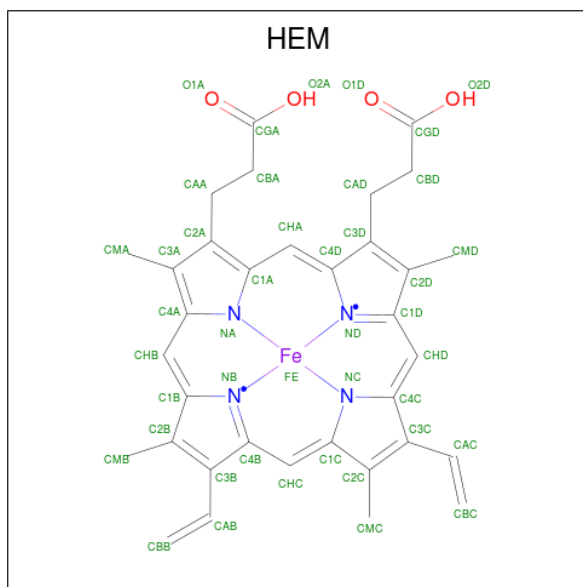
- Molecule 1 is a protein called Nitric oxide synthase, endothelial.

Mol	Chain	Residues	Atoms					ZeroOcc	AltConf	Trace
			Total	C	N	O	S			
1	A	401	3207	2043	564	584	16	0	1	0
1	B	401	3211	2045	564	586	16	0	3	0
1	C	402	3212	2046	565	585	16	0	1	0
1	D	402	3214	2046	567	585	16	0	1	0

There are 4 discrepancies between the modelled and reference sequences:

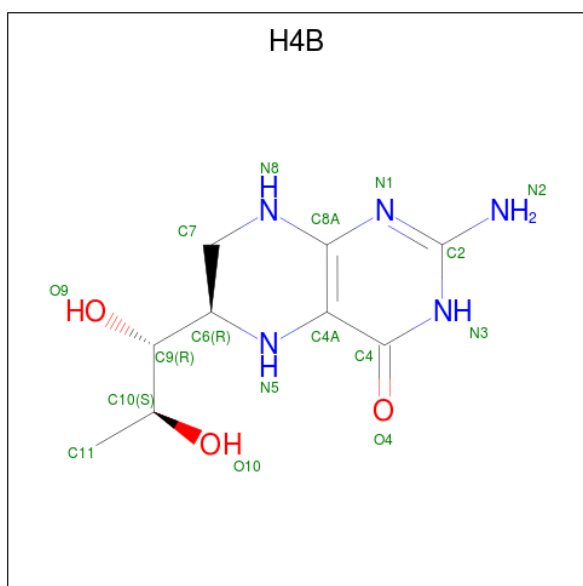
Chain	Residue	Modelled	Actual	Comment	Reference
A	298	GLU	ASP	variant	UNP P29474
B	298	GLU	ASP	variant	UNP P29474
C	298	GLU	ASP	variant	UNP P29474
D	298	GLU	ASP	variant	UNP P29474

- Molecule 2 is PROTOPORPHYRIN IX CONTAINING FE (three-letter code: HEM) (formula: $C_{34}H_{32}FeN_4O_4$).



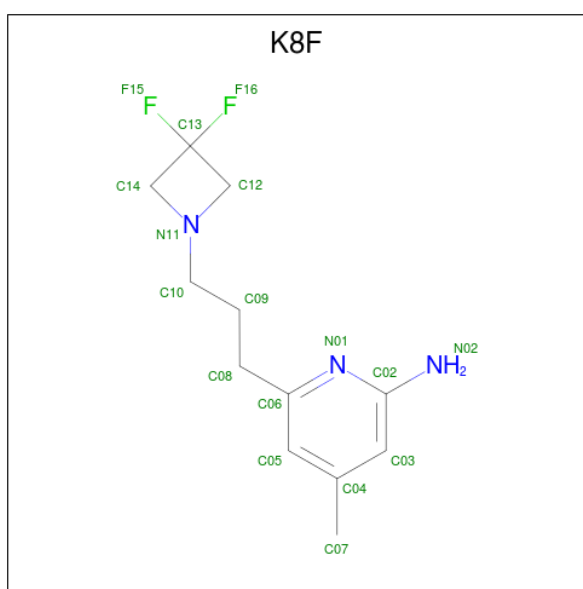
Mol	Chain	Residues	Atoms				ZeroOcc	AltConf		
			Total	C	Fe	N			O	
2	A	1	Total	43	34	1	4	4	0	0
2	B	1	Total	43	34	1	4	4	0	0
2	C	1	Total	43	34	1	4	4	0	0
2	D	1	Total	43	34	1	4	4	0	0

- Molecule 3 is 5,6,7,8-TETRAHYDROBIOPTERIN (three-letter code: H4B) (formula: $C_9H_{15}N_5O_3$).



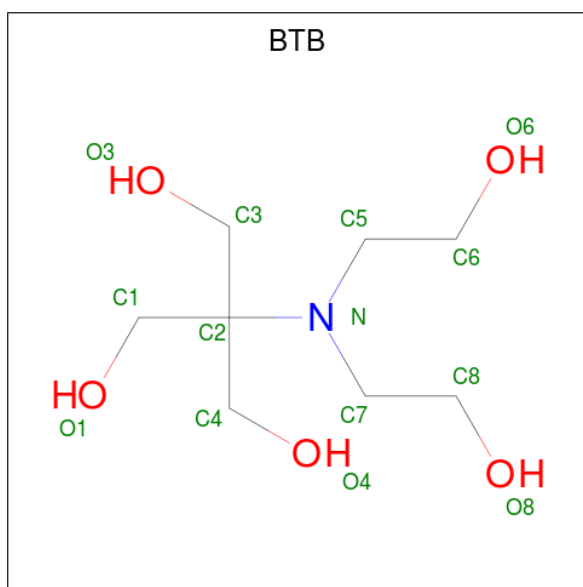
Mol	Chain	Residues	Atoms				ZeroOcc	AltConf
3	A	1	Total	C	N	O	0	0
			17	9	5	3		
3	B	1	Total	C	N	O	0	0
			17	9	5	3		
3	C	1	Total	C	N	O	0	0
			17	9	5	3		
3	D	1	Total	C	N	O	0	0
			17	9	5	3		

- Molecule 4 is 6-[3-(3,3-difluoroazetid-1-yl)propyl]-4-methylpyridin-2-amine (three-letter code: K8F) (formula: C₁₂H₁₇F₂N₃) (labeled as "Ligand of Interest" by depositor).



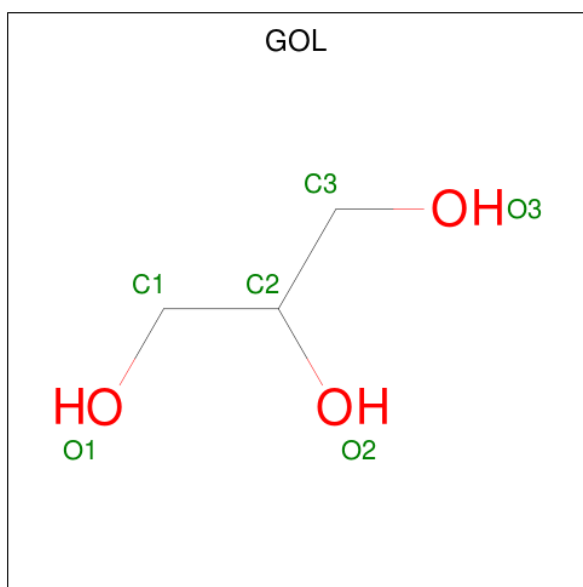
Mol	Chain	Residues	Atoms				ZeroOcc	AltConf
4	A	1	Total	C	F	N	0	0
			17	12	2	3		
4	B	1	Total	C	F	N	0	0
			17	12	2	3		
4	C	1	Total	C	F	N	0	0
			17	12	2	3		
4	D	1	Total	C	F	N	0	0
			17	12	2	3		

- Molecule 5 is 2-[BIS-(2-HYDROXY-ETHYL)-AMINO]-2-HYDROXYMETHYL-PROPAN E-1,3-DIOL (three-letter code: BTB) (formula: C₈H₁₉NO₅).



Mol	Chain	Residues	Atoms				ZeroOcc	AltConf
			Total	C	N	O		
5	A	1	Total 14	C 8	N 1	O 5	0	0
5	A	1	Total 14	C 8	N 1	O 5	0	0
5	A	1	Total 14	C 8	N 1	O 5	0	0
5	B	1	Total 14	C 8	N 1	O 5	0	0
5	B	1	Total 14	C 8	N 1	O 5	0	0
5	B	1	Total 14	C 8	N 1	O 5	0	0
5	C	1	Total 14	C 8	N 1	O 5	0	0
5	C	1	Total 14	C 8	N 1	O 5	0	0
5	D	1	Total 14	C 8	N 1	O 5	0	0
5	D	1	Total 14	C 8	N 1	O 5	0	0

- Molecule 6 is GLYCEROL (three-letter code: GOL) (formula: C₃H₈O₃).



Mol	Chain	Residues	Atoms	ZeroOcc	AltConf
6	A	1	Total C O 6 3 3	0	0
6	A	1	Total C O 6 3 3	0	0
6	A	1	Total C O 6 3 3	0	0
6	B	1	Total C O 6 3 3	0	0
6	C	1	Total C O 6 3 3	0	0
6	C	1	Total C O 6 3 3	0	0
6	C	1	Total C O 6 3 3	0	0
6	D	1	Total C O 6 3 3	0	0

- Molecule 7 is CHLORIDE ION (three-letter code: CL) (formula: Cl).

Mol	Chain	Residues	Atoms	ZeroOcc	AltConf
7	A	1	Total Cl 1 1	0	0
7	B	1	Total Cl 1 1	0	0
7	C	1	Total Cl 1 1	0	0
7	D	1	Total Cl 1 1	0	0

- Molecule 8 is GADOLINIUM ATOM (three-letter code: GD) (formula: Gd).

Mol	Chain	Residues	Atoms	ZeroOcc	AltConf
8	A	1	Total Gd 1 1	0	0
8	B	1	Total Gd 1 1	0	0
8	C	1	Total Gd 1 1	0	0
8	D	1	Total Gd 1 1	0	0

- Molecule 9 is ZINC ION (three-letter code: ZN) (formula: Zn).

Mol	Chain	Residues	Atoms	ZeroOcc	AltConf
9	A	1	Total Zn 1 1	0	0
9	C	1	Total Zn 1 1	0	0

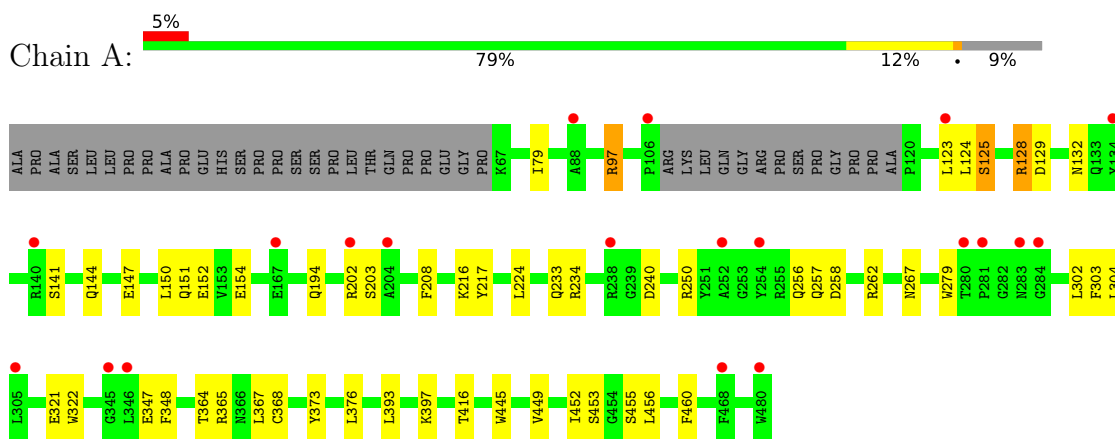
- Molecule 10 is water.

Mol	Chain	Residues	Atoms	ZeroOcc	AltConf
10	A	92	Total O 92 92	0	0
10	B	144	Total O 144 144	0	0
10	C	100	Total O 100 100	0	0
10	D	183	Total O 183 183	0	0

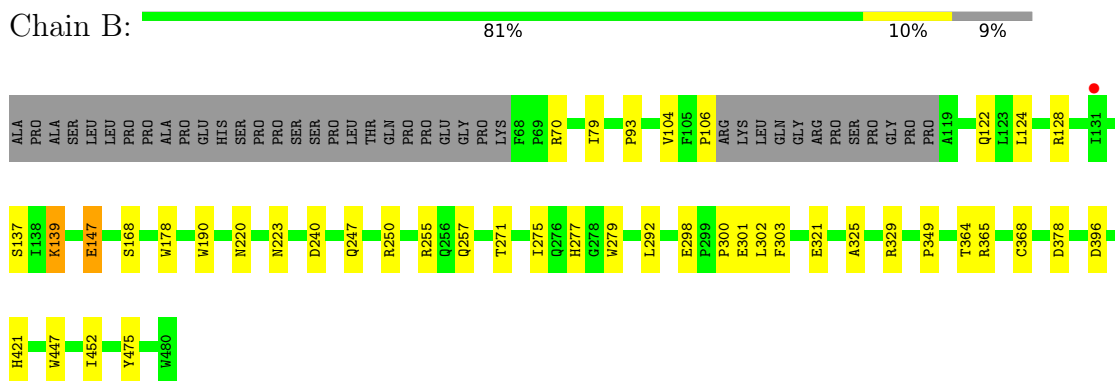
3 Residue-property plots [i](#)

These plots are drawn for all protein, RNA, DNA and oligosaccharide chains in the entry. The first graphic for a chain summarises the proportions of the various outlier classes displayed in the second graphic. The second graphic shows the sequence view annotated by issues in geometry and electron density. Residues are color-coded according to the number of geometric quality criteria for which they contain at least one outlier: green = 0, yellow = 1, orange = 2 and red = 3 or more. A red dot above a residue indicates a poor fit to the electron density ($RSRZ > 2$). Stretches of 2 or more consecutive residues without any outlier are shown as a green connector. Residues present in the sample, but not in the model, are shown in grey.

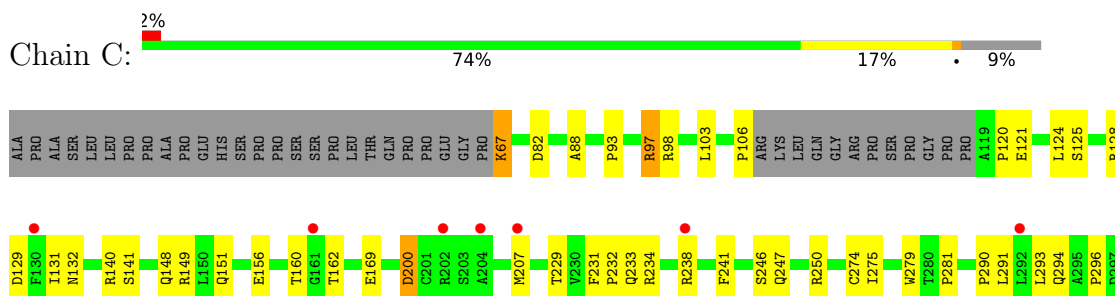
- Molecule 1: Nitric oxide synthase, endothelial



- Molecule 1: Nitric oxide synthase, endothelial

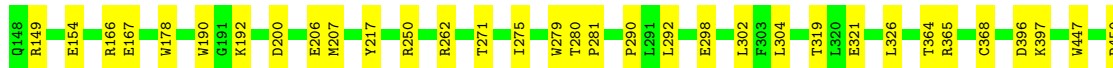
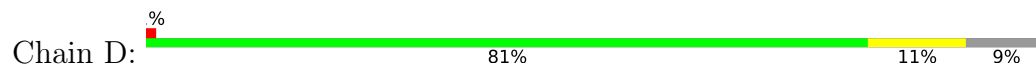


- Molecule 1: Nitric oxide synthase, endothelial





- Molecule 1: Nitric oxide synthase, endothelial



4 Data and refinement statistics i

Property	Value	Source
Space group	P 1 21 1	Depositor
Cell constants a, b, c, α , β , γ	59.72Å 153.49Å 109.03Å 90.00° 90.54° 90.00°	Depositor
Resolution (Å)	39.12 – 2.00 39.11 – 2.00	Depositor EDS
% Data completeness (in resolution range)	93.5 (39.12-2.00) 91.6 (39.11-2.00)	Depositor EDS
R_{merge}	0.37	Depositor
R_{sym}	(Not available)	Depositor
$\langle I/\sigma(I) \rangle$ ¹	1.38 (at 2.00Å)	Xtrriage
Refinement program	PHENIX 1.11.1_2575	Depositor
R, R_{free}	0.221 , 0.273 0.209 , 0.262	Depositor DCC
R_{free} test set	6281 reflections (5.06%)	wwPDB-VP
Wilson B-factor (Å ²)	35.2	Xtrriage
Anisotropy	0.472	Xtrriage
Bulk solvent k_{sol} (e/Å ³), B_{sol} (Å ²)	0.34 , 43.4	EDS
L-test for twinning ²	$\langle L \rangle = 0.44$, $\langle L^2 \rangle = 0.27$	Xtrriage
Estimated twinning fraction	0.208 for h,-k,-l	Xtrriage
F_o, F_c correlation	0.96	EDS
Total number of atoms	13869	wwPDB-VP
Average B, all atoms (Å ²)	54.0	wwPDB-VP

Xtrriage's analysis on translational NCS is as follows: *The largest off-origin peak in the Patterson function is 3.09% of the height of the origin peak. No significant pseudotranslation is detected.*

¹Intensities estimated from amplitudes.

²Theoretical values of $\langle |L| \rangle$, $\langle L^2 \rangle$ for acentric reflections are 0.5, 0.333 respectively for untwinned datasets, and 0.375, 0.2 for perfectly twinned datasets.

5 Model quality [i](#)

5.1 Standard geometry [i](#)

Bond lengths and bond angles in the following residue types are not validated in this section: K8F, H4B, CL, GOL, HEM, GD, BTB, ZN

The Z score for a bond length (or angle) is the number of standard deviations the observed value is removed from the expected value. A bond length (or angle) with $|Z| > 5$ is considered an outlier worth inspection. RMSZ is the root-mean-square of all Z scores of the bond lengths (or angles).

Mol	Chain	Bond lengths		Bond angles	
		RMSZ	# Z >5	RMSZ	# Z >5
1	A	0.36	0/3302	0.53	0/4498
1	B	0.42	0/3312	0.56	0/4514
1	C	0.37	0/3307	0.52	0/4506
1	D	0.45	0/3309	0.58	0/4509
All	All	0.40	0/13230	0.55	0/18027

There are no bond length outliers.

There are no bond angle outliers.

There are no chirality outliers.

There are no planarity outliers.

5.2 Too-close contacts [i](#)

In the following table, the Non-H and H(model) columns list the number of non-hydrogen atoms and hydrogen atoms in the chain respectively. The H(added) column lists the number of hydrogen atoms added and optimized by MolProbity. The Clashes column lists the number of clashes within the asymmetric unit, whereas Symm-Clashes lists symmetry-related clashes.

Mol	Chain	Non-H	H(model)	H(added)	Clashes	Symm-Clashes
1	A	3207	0	3112	28	0
1	B	3211	0	3114	31	0
1	C	3212	0	3116	45	0
1	D	3214	0	3116	27	1
2	A	43	0	30	1	0
2	B	43	0	30	3	0
2	C	43	0	30	2	0
2	D	43	0	30	1	0
3	A	17	0	15	1	0

Continued on next page...

Continued from previous page...

Mol	Chain	Non-H	H(model)	H(added)	Clashes	Symm-Clashes
3	B	17	0	15	2	0
3	C	17	0	15	1	0
3	D	17	0	15	1	0
4	A	17	0	0	0	0
4	B	17	0	0	0	0
4	C	17	0	0	1	0
4	D	17	0	0	0	0
5	A	42	0	57	6	0
5	B	42	0	54	9	1
5	C	28	0	36	5	0
5	D	28	0	36	6	0
6	A	18	0	24	1	0
6	B	6	0	8	1	0
6	C	18	0	24	0	0
6	D	6	0	8	1	0
7	A	1	0	0	0	0
7	B	1	0	0	0	0
7	C	1	0	0	0	0
7	D	1	0	0	0	0
8	A	1	0	0	0	0
8	B	1	0	0	0	0
8	C	1	0	0	0	0
8	D	1	0	0	0	0
9	A	1	0	0	0	0
9	C	1	0	0	0	0
10	A	92	0	0	1	0
10	B	144	0	0	2	0
10	C	100	0	0	2	0
10	D	183	0	0	4	0
All	All	13869	0	12885	144	1

The all-atom clashscore is defined as the number of clashes found per 1000 atoms (including hydrogen atoms). The all-atom clashscore for this structure is 5.

All (144) close contacts within the same asymmetric unit are listed below, sorted by their clash magnitude.

Atom-1	Atom-2	Interatomic distance (Å)	Clash overlap (Å)
1:C:234:ARG:HA	1:C:238:ARG:HH21	1.43	0.83
1:C:200:ASP:OD1	1:C:200:ASP:N	2.20	0.73
1:D:290:PRO:HB3	1:D:304:LEU:HD23	1.73	0.70
1:C:128:ARG:O	1:C:132:ASN:ND2	2.24	0.70

Continued on next page...

Continued from previous page...

Atom-1	Atom-2	Interatomic distance (Å)	Clash overlap (Å)
1:C:279:TRP:HB2	1:C:302:LEU:HD11	1.76	0.67
1:C:103:LEU:HA	1:D:463:GLU:HG2	1.78	0.66
1:C:275:ILE:HD11	1:C:281:PRO:HB3	1.78	0.66
1:C:160:THR:HG23	1:C:162:THR:H	1.62	0.64
1:B:70:ARG:HD2	1:B:79:ILE:HD13	1.80	0.62
1:D:365:ARG:HH22	6:D:506:GOL:H32	1.65	0.62
1:B:321:GLU:OE1	5:B:504:BTB:O8	2.17	0.61
1:A:234:ARG:NH1	1:A:347:GLU:OE1	2.34	0.61
5:A:504:BTB:O3	5:A:504:BTB:O4	2.10	0.61
2:B:501:HEM:HHC	2:B:501:HEM:HBB2	1.83	0.60
1:A:147:GLU:HA	1:A:150:LEU:HD12	1.82	0.60
1:A:397:LYS:NZ	10:A:603:HOH:O	2.34	0.59
1:D:279:TRP:HB2	1:D:302:LEU:HD21	1.84	0.59
1:D:271:THR:O	1:D:275:ILE:HG12	2.01	0.59
1:C:97:ARG:HG2	1:D:88:ALA:HB3	1.85	0.59
2:B:501:HEM:HBC2	2:B:501:HEM:HMC2	1.84	0.58
2:C:501:HEM:HBB2	2:C:501:HEM:HHC	1.85	0.58
1:C:234:ARG:HA	1:C:238:ARG:NH2	2.17	0.58
2:C:501:HEM:HBC2	2:C:501:HEM:HMC2	1.84	0.58
1:C:365:ARG:HH12	3:C:502:H4B:C4	2.18	0.57
2:A:501:HEM:HBB2	2:A:501:HEM:HHC	1.86	0.56
1:B:247:GLN:HB2	1:B:250:ARG:HD3	1.87	0.56
1:D:124:LEU:HD11	1:D:154:GLU:HG3	1.87	0.55
1:D:275:ILE:HD12	1:D:281:PRO:HG3	1.87	0.55
1:D:321:GLU:OE2	5:D:504:BTB:O4	2.24	0.55
1:A:128:ARG:HH11	1:A:128:ARG:HB2	1.72	0.55
1:C:382:CYS:HA	5:C:504:BTB:H12	1.87	0.55
1:A:321:GLU:H	1:A:321:GLU:CD	2.09	0.54
5:A:505:BTB:O4	5:A:505:BTB:O3	2.20	0.54
5:D:504:BTB:H61	10:D:682:HOH:O	2.07	0.54
1:C:453:SER:HB3	1:C:456:LEU:HD12	1.89	0.53
1:D:397:LYS:NZ	10:D:605:HOH:O	2.40	0.53
1:B:277:HIS:O	1:B:302:LEU:HD22	2.08	0.53
1:B:298:GLU:CD	5:B:505:BTB:H42	2.29	0.53
1:C:131:ILE:HD12	1:C:149:ARG:HG3	1.92	0.52
1:C:479:PRO:HD2	1:C:480:TRP:CZ3	2.44	0.52
1:D:298:GLU:OE2	5:D:505:BTB:H41	2.09	0.52
1:A:233:GLN:HB3	1:A:348:PHE:CE2	2.45	0.52
1:B:298:GLU:OE2	5:B:505:BTB:O8	2.27	0.51
1:B:292:LEU:HD22	1:B:300:PRO:HB2	1.93	0.51
1:D:167:GLU:OE1	10:D:601:HOH:O	2.19	0.51

Continued on next page...

Continued from previous page...

Atom-1	Atom-2	Interatomic distance (Å)	Clash overlap (Å)
1:C:129:ASP:HA	1:C:132:ASN:HD22	1.76	0.51
1:C:450:PRO:HG3	1:C:457:THR:HG21	1.93	0.50
1:A:453:SER:HA	1:B:452:ILE:HG22	1.93	0.50
1:D:149:ARG:HD3	1:D:166:ARG:CZ	2.42	0.49
1:B:298:GLU:HG2	10:B:689:HOH:O	2.12	0.49
1:A:208:PHE:CE1	1:A:303:PHE:HB3	2.47	0.49
2:D:501:HEM:HBB2	2:D:501:HEM:HHC	1.93	0.49
1:A:445:TRP:CE2	1:A:449:VAL:HG21	2.48	0.49
1:B:475:TYR:OH	2:B:501:HEM:O1D	2.27	0.49
1:C:156:GLU:O	1:C:160:THR:HG22	2.12	0.49
1:C:247:GLN:HB2	1:C:250:ARG:HG2	1.94	0.49
1:C:149:ARG:NE	1:C:169:GLU:OE2	2.36	0.49
1:A:128:ARG:O	1:A:132:ASN:ND2	2.46	0.49
1:D:178:TRP:CE3	1:D:190:TRP:HA	2.48	0.49
1:A:125:SER:HA	1:A:128:ARG:HH12	1.78	0.48
1:A:453:SER:HB3	1:A:456:LEU:HD12	1.96	0.48
1:A:256:GLN:C	1:A:258:ASP:H	2.16	0.48
1:C:246:SER:HA	1:C:338:ASN:HB3	1.96	0.48
1:C:88:ALA:HB3	1:D:97:ARG:HD2	1.95	0.48
1:A:257:GLN:O	6:A:508:GOL:O2	2.28	0.48
1:C:233:GLN:HB3	1:C:348:PHE:CE2	2.49	0.48
1:C:120:PRO:O	1:C:124:LEU:HG	2.13	0.47
1:A:194:GLN:HG2	1:A:217:TYR:CZ	2.50	0.47
1:A:97:ARG:HH11	1:A:97:ARG:HB2	1.78	0.47
1:A:279:TRP:HB2	1:A:302:LEU:HD13	1.97	0.47
1:C:294:GLN:HB2	1:C:300:PRO:HB3	1.97	0.47
1:C:364:THR:O	1:C:368:CYS:HB2	2.15	0.47
1:C:376:LEU:HB2	10:C:614:HOH:O	2.15	0.46
1:B:271:THR:O	1:B:275:ILE:HG13	2.15	0.46
1:A:224:LEU:HB2	1:A:416:THR:HB	1.97	0.46
5:A:505:BTB:H11	5:A:505:BTB:H51	1.69	0.46
1:B:378:ASP:OD2	5:C:504:BTB:O4	2.33	0.46
1:C:296:PRO:O	1:C:298:GLU:HG2	2.16	0.46
5:C:505:BTB:H51	5:C:505:BTB:H42	1.56	0.46
1:A:393:LEU:O	1:A:397:LYS:HG3	2.16	0.45
1:B:220:ASN:HB3	1:B:223:ASN:O	2.15	0.45
1:B:279:TRP:HB2	1:B:302:LEU:HD21	1.97	0.45
1:B:104:VAL:HG11	6:B:506:GOL:H12	1.98	0.45
1:C:291:LEU:HB3	1:C:293:LEU:HD21	1.98	0.45
1:B:250:ARG:HA	1:B:250:ARG:HD2	1.81	0.45
1:C:82:ASP:OD2	10:C:601:HOH:O	2.21	0.45

Continued on next page...

Continued from previous page...

Atom-1	Atom-2	Interatomic distance (Å)	Clash overlap (Å)
1:C:370:PRO:HB2	1:D:75:GLU:HG3	1.98	0.45
1:A:364:THR:HG21	1:A:452:ILE:HG23	1.99	0.45
1:A:455:SER:HA	1:A:460:PHE:CG	2.51	0.45
1:B:240:ASP:HB3	1:B:349:PRO:HG2	1.99	0.45
1:B:364:THR:O	1:B:368:CYS:HB2	2.17	0.44
5:A:505:BTB:H72	5:A:505:BTB:H41	1.51	0.44
1:C:93:PRO:HB3	1:C:106:PRO:HB3	1.99	0.44
1:C:479:PRO:HD2	1:C:480:TRP:CE3	2.52	0.44
1:C:364:THR:HG21	1:C:452:ILE:HG23	1.99	0.44
1:B:421:HIS:ND1	10:B:603:HOH:O	2.37	0.44
1:B:147:GLU:H	1:B:147:GLU:HG2	1.51	0.44
1:A:368:CYS:SG	1:A:376:LEU:HD13	2.58	0.44
1:B:365:ARG:HH12	3:B:502:H4B:C4	2.31	0.44
1:C:207:MET:HG3	1:C:231:PHE:CZ	2.53	0.44
1:C:241:PHE:CZ	1:C:296:PRO:HD3	2.52	0.44
1:B:447:TRP:HA	3:B:502:H4B:N1	2.32	0.43
1:B:137:SER:O	1:B:139:LYS:NZ	2.29	0.43
1:D:450:PRO:HG2	1:D:457:THR:HG21	2.01	0.43
1:A:322:TRP:CD1	5:A:504:BTB:H61	2.53	0.43
5:B:504:BTB:H81	1:C:374:ASN:O	2.19	0.43
1:A:367:LEU:HA	1:A:373:TYR:HB2	2.01	0.43
1:C:384:ASP:OD1	5:C:504:BTB:O3	2.37	0.43
1:D:143:SER:O	1:D:147:GLU:HG2	2.19	0.43
1:D:250:ARG:NH1	10:D:603:HOH:O	2.24	0.43
1:D:447:TRP:HA	3:D:502:H4B:N1	2.33	0.43
1:C:306:PRO:O	1:C:309:LEU:N	2.39	0.43
1:B:298:GLU:OE1	5:B:505:BTB:H42	2.19	0.42
1:D:298:GLU:CD	5:D:505:BTB:H41	2.39	0.42
5:C:504:BTB:H12	5:C:504:BTB:H51	1.72	0.42
5:B:509:BTB:H42	5:B:509:BTB:H51	1.56	0.42
1:C:379:VAL:HG21	1:C:402:ILE:HD11	2.02	0.42
1:B:124:LEU:HD23	1:B:124:LEU:HA	1.77	0.42
1:A:151:GLN:O	1:A:154:GLU:HB2	2.19	0.42
1:C:231:PHE:HB3	1:C:232:PRO:CD	2.49	0.42
1:B:178:TRP:CE3	1:B:190:TRP:HA	2.55	0.42
1:B:93:PRO:HG3	1:B:106:PRO:HB3	2.02	0.42
1:B:139:LYS:N	1:B:139:LYS:HD2	2.35	0.42
1:D:364:THR:O	1:D:368:CYS:HB2	2.20	0.42
5:B:505:BTB:O8	5:B:505:BTB:O6	2.24	0.42
1:C:229:THR:O	1:C:351:ALA:HA	2.19	0.42
5:B:504:BTB:H41	5:B:504:BTB:H72	1.93	0.41

Continued on next page...

Continued from previous page...

Atom-1	Atom-2	Interatomic distance (Å)	Clash overlap (Å)
1:A:250:ARG:HD3	1:A:267:ASN:OD1	2.20	0.41
1:A:365:ARG:HH12	3:A:502:H4B:C4	2.32	0.41
1:C:361:GLU:OE1	4:C:503:K8F:N01	2.54	0.41
5:D:504:BTB:H72	5:D:504:BTB:H12	1.74	0.41
5:A:506:BTB:H11	5:A:506:BTB:H51	1.56	0.41
5:B:505:BTB:H11	5:B:505:BTB:H51	1.26	0.41
1:C:67:LYS:HA	1:C:67:LYS:HD3	1.93	0.41
1:D:319:THR:HB	5:D:504:BTB:O3	2.20	0.41
1:D:280:THR:HA	1:D:281:PRO:HD3	1.92	0.41
1:B:104:VAL:O	1:B:106:PRO:HD3	2.22	0.40
1:C:274:CYS:SG	1:C:290:PRO:HG2	2.61	0.40
1:D:455:SER:HA	1:D:460:PHE:CG	2.57	0.40
1:A:125:SER:HA	1:A:128:ARG:NH1	2.36	0.40
1:B:325:ALA:HB1	1:C:322:TRP:HB2	2.03	0.40
1:D:217:TYR:CD2	1:D:217:TYR:C	2.95	0.40
1:D:292:LEU:HD23	1:D:292:LEU:HA	1.79	0.40
1:B:301:GLU:HB3	1:B:303:PHE:CE1	2.57	0.40

All (1) symmetry-related close contacts are listed below. The label for Atom-2 includes the symmetry operator and encoded unit-cell translations to be applied.

Atom-1	Atom-2	Interatomic distance (Å)	Clash overlap (Å)
1:D:167:GLU:OE1	5:B:505:BTB:O1[1_554]	2.18	0.02

5.3 Torsion angles [\(i\)](#)

5.3.1 Protein backbone [\(i\)](#)

In the following table, the Percentiles column shows the percent Ramachandran outliers of the chain as a percentile score with respect to all X-ray entries followed by that with respect to entries of similar resolution.

The Analysed column shows the number of residues for which the backbone conformation was analysed, and the total number of residues.

Mol	Chain	Analysed	Favoured	Allowed	Outliers	Percentiles	
1	A	398/440 (90%)	378 (95%)	19 (5%)	1 (0%)	41	37
1	B	400/440 (91%)	389 (97%)	11 (3%)	0	100	100
1	C	399/440 (91%)	382 (96%)	17 (4%)	0	100	100

Continued on next page...

Continued from previous page...

Mol	Chain	Analysed	Favoured	Allowed	Outliers	Percentiles	
1	D	399/440 (91%)	386 (97%)	12 (3%)	1 (0%)	41	37
All	All	1596/1760 (91%)	1535 (96%)	59 (4%)	2 (0%)	51	49

All (2) Ramachandran outliers are listed below:

Mol	Chain	Res	Type
1	A	144	GLN
1	D	89	GLN

5.3.2 Protein sidechains [i](#)

In the following table, the Percentiles column shows the percent sidechain outliers of the chain as a percentile score with respect to all X-ray entries followed by that with respect to entries of similar resolution.

The Analysed column shows the number of residues for which the sidechain conformation was analysed, and the total number of residues.

Mol	Chain	Analysed	Rotameric	Outliers	Percentiles	
1	A	342/373 (92%)	327 (96%)	15 (4%)	28	25
1	B	343/373 (92%)	333 (97%)	10 (3%)	42	43
1	C	342/373 (92%)	325 (95%)	17 (5%)	24	20
1	D	342/373 (92%)	332 (97%)	10 (3%)	42	43
All	All	1369/1492 (92%)	1317 (96%)	52 (4%)	34	31

All (52) residues with a non-rotameric sidechain are listed below:

Mol	Chain	Res	Type
1	A	79	ILE
1	A	97	ARG
1	A	123	LEU
1	A	124	LEU
1	A	125	SER
1	A	128	ARG
1	A	129	ASP
1	A	141	SER
1	A	152	GLU
1	A	202	ARG
1	A	203	SER
1	A	216	LYS

Continued on next page...

Continued from previous page...

Mol	Chain	Res	Type
1	A	240	ASP
1	A	262	ARG
1	A	304	LEU
1	B	122	GLN
1	B	128	ARG
1	B	139	LYS
1	B	147	GLU
1	B	168[A]	SER
1	B	168[B]	SER
1	B	255	ARG
1	B	257	GLN
1	B	329	ARG
1	B	396	ASP
1	C	67	LYS
1	C	97	ARG
1	C	98	ARG
1	C	121	GLU
1	C	125	SER
1	C	140	ARG
1	C	141	SER
1	C	148	GLN
1	C	151	GLN
1	C	200	ASP
1	C	302	LEU
1	C	308	GLU
1	C	309	LEU
1	C	377	GLU
1	C	389	THR
1	C	429	LYS
1	C	438	ARG
1	D	98	ARG
1	D	125	SER
1	D	136	SER
1	D	192	LYS
1	D	200	ASP
1	D	206	GLU
1	D	207	MET
1	D	262	ARG
1	D	326	LEU
1	D	396	ASP

Sometimes sidechains can be flipped to improve hydrogen bonding and reduce clashes. All (1) such sidechains are listed below:

Mol	Chain	Res	Type
1	A	233	GLN

5.3.3 RNA [i](#)

There are no RNA molecules in this entry.

5.4 Non-standard residues in protein, DNA, RNA chains [i](#)

There are no non-standard protein/DNA/RNA residues in this entry.

5.5 Carbohydrates [i](#)

There are no monosaccharides in this entry.

5.6 Ligand geometry [i](#)

Of 40 ligands modelled in this entry, 10 are monoatomic - leaving 30 for Mogul analysis.

In the following table, the Counts columns list the number of bonds (or angles) for which Mogul statistics could be retrieved, the number of bonds (or angles) that are observed in the model and the number of bonds (or angles) that are defined in the Chemical Component Dictionary. The Link column lists molecule types, if any, to which the group is linked. The Z score for a bond length (or angle) is the number of standard deviations the observed value is removed from the expected value. A bond length (or angle) with $|Z| > 2$ is considered an outlier worth inspection. RMSZ is the root-mean-square of all Z scores of the bond lengths (or angles).

Mol	Type	Chain	Res	Link	Bond lengths			Bond angles		
					Counts	RMSZ	# Z > 2	Counts	RMSZ	# Z > 2
5	BTB	D	505	-	13,13,13	0.56	0	7,16,16	0.63	0
4	K8F	B	503	-	16,18,18	1.59	4 (25%)	17,26,26	1.61	6 (35%)
2	HEM	B	501	1	41,50,50	1.44	6 (14%)	45,82,82	2.03	15 (33%)
6	GOL	A	507	-	5,5,5	0.33	0	5,5,5	0.46	0
5	BTB	A	505	-	13,13,13	0.66	0	7,16,16	1.19	0
5	BTB	C	505	-	13,13,13	0.32	0	7,16,16	0.54	0
3	H4B	B	502	-	16,18,18	0.96	0	11,26,26	2.76	7 (63%)
6	GOL	A	508	-	5,5,5	0.37	0	5,5,5	0.59	0
3	H4B	A	502	-	16,18,18	0.90	0	11,26,26	2.67	5 (45%)
5	BTB	D	504	8	13,13,13	0.43	0	7,16,16	0.73	0
6	GOL	C	506	-	5,5,5	0.41	0	5,5,5	0.22	0
3	H4B	C	502	-	16,18,18	0.85	0	11,26,26	2.46	5 (45%)
5	BTB	A	504	8	13,13,13	0.38	0	7,16,16	0.76	0

Mol	Type	Chain	Res	Link	Bond lengths			Bond angles		
					Counts	RMSZ	# Z > 2	Counts	RMSZ	# Z > 2
5	BTB	B	504	8	13,13,13	0.65	0	7,16,16	0.70	0
2	HEM	D	501	1	41,50,50	1.38	5 (12%)	45,82,82	1.89	13 (28%)
5	BTB	A	506	-	13,13,13	0.37	0	7,16,16	0.51	0
2	HEM	C	501	1	41,50,50	1.56	6 (14%)	45,82,82	1.70	8 (17%)
4	K8F	D	503	-	16,18,18	1.41	4 (25%)	17,26,26	2.09	5 (29%)
5	BTB	C	504	8	13,13,13	0.34	0	7,16,16	0.74	0
2	HEM	A	501	1	41,50,50	1.55	4 (9%)	45,82,82	1.78	12 (26%)
4	K8F	A	503	-	16,18,18	1.40	4 (25%)	17,26,26	2.19	8 (47%)
6	GOL	A	512	-	5,5,5	0.64	0	5,5,5	1.75	2 (40%)
6	GOL	D	506	-	5,5,5	0.37	0	5,5,5	0.34	0
3	H4B	D	502	-	16,18,18	0.92	0	11,26,26	2.65	6 (54%)
4	K8F	C	503	-	16,18,18	1.43	4 (25%)	17,26,26	2.49	3 (17%)
6	GOL	B	506	-	5,5,5	0.37	0	5,5,5	0.45	0
6	GOL	C	507	-	5,5,5	0.36	0	5,5,5	0.25	0
5	BTB	B	505	-	13,13,13	0.55	0	7,16,16	1.16	1 (14%)
6	GOL	C	508	-	5,5,5	0.37	0	5,5,5	0.40	0
5	BTB	B	509	-	13,13,13	0.86	0	7,16,16	0.99	0

In the following table, the Chirals column lists the number of chiral outliers, the number of chiral centers analysed, the number of these observed in the model and the number defined in the Chemical Component Dictionary. Similar counts are reported in the Torsion and Rings columns. '-' means no outliers of that kind were identified.

Mol	Type	Chain	Res	Link	Chirals	Torsions	Rings
5	BTB	D	505	-	-	5/21/21/21	-
4	K8F	B	503	-	-	2/4/16/16	0/2/2/2
2	HEM	B	501	1	-	1/12/54/54	-
6	GOL	A	507	-	-	4/4/4/4	-
5	BTB	A	505	-	-	8/21/21/21	-
5	BTB	C	505	-	-	11/21/21/21	-
3	H4B	B	502	-	-	2/8/17/17	0/2/2/2
6	GOL	A	508	-	-	0/4/4/4	-
3	H4B	A	502	-	-	3/8/17/17	0/2/2/2
5	BTB	D	504	8	-	2/21/21/21	-
6	GOL	C	506	-	-	4/4/4/4	-
3	H4B	C	502	-	-	0/8/17/17	0/2/2/2
5	BTB	A	504	8	-	6/21/21/21	-
5	BTB	B	504	8	-	4/21/21/21	-

Continued on next page...

Continued from previous page...

Mol	Type	Chain	Res	Link	Chirals	Torsions	Rings
2	HEM	D	501	1	-	0/12/54/54	-
5	BTB	A	506	-	-	1/21/21/21	-
2	HEM	C	501	1	-	6/12/54/54	-
4	K8F	D	503	-	-	1/4/16/16	0/2/2/2
5	BTB	C	504	8	-	1/21/21/21	-
2	HEM	A	501	1	-	2/12/54/54	-
4	K8F	A	503	-	-	3/4/16/16	0/2/2/2
6	GOL	A	512	-	-	4/4/4/4	-
6	GOL	D	506	-	-	1/4/4/4	-
3	H4B	D	502	-	-	0/8/17/17	0/2/2/2
4	K8F	C	503	-	-	2/4/16/16	0/2/2/2
6	GOL	B	506	-	-	4/4/4/4	-
6	GOL	C	507	-	-	2/4/4/4	-
5	BTB	B	505	-	-	14/21/21/21	-
6	GOL	C	508	-	-	4/4/4/4	-
5	BTB	B	509	-	-	12/21/21/21	-

All (37) bond length outliers are listed below:

Mol	Chain	Res	Type	Atoms	Z	Observed(Å)	Ideal(Å)
2	B	501	HEM	C3C-CAC	4.02	1.56	1.47
2	A	501	HEM	FE-NB	4.00	2.16	1.96
2	A	501	HEM	C3C-C2C	-3.89	1.35	1.40
2	C	501	HEM	C3C-CAC	3.70	1.55	1.47
2	D	501	HEM	C3C-CAC	3.54	1.55	1.47
2	A	501	HEM	CAB-C3B	3.44	1.56	1.47
2	A	501	HEM	C3C-CAC	3.41	1.54	1.47
4	B	503	K8F	F15-C13	-3.29	1.32	1.38
2	C	501	HEM	CAB-C3B	3.24	1.56	1.47
4	D	503	K8F	F15-C13	-3.23	1.32	1.38
4	C	503	K8F	F15-C13	-3.23	1.32	1.38
2	C	501	HEM	FE-NB	3.22	2.12	1.96
2	C	501	HEM	C3C-C2C	-3.18	1.36	1.40
4	A	503	K8F	F15-C13	-3.11	1.32	1.38
4	A	503	K8F	F16-C13	-3.00	1.33	1.38
4	B	503	K8F	F16-C13	-2.99	1.33	1.38
4	C	503	K8F	F16-C13	-2.94	1.33	1.38
2	D	501	HEM	C3C-C2C	-2.86	1.36	1.40
4	B	503	K8F	C12-C13	-2.84	1.51	1.54
2	B	501	HEM	CAB-C3B	2.83	1.55	1.47

Continued on next page...

Continued from previous page...

Mol	Chain	Res	Type	Atoms	Z	Observed(Å)	Ideal(Å)
4	D	503	K8F	F16-C13	-2.77	1.33	1.38
2	D	501	HEM	CAB-C3B	2.77	1.55	1.47
4	C	503	K8F	C14-C13	-2.62	1.52	1.54
4	A	503	K8F	C14-C13	-2.57	1.52	1.54
4	B	503	K8F	C14-C13	-2.55	1.52	1.54
2	B	501	HEM	CMB-C2B	2.49	1.56	1.50
2	C	501	HEM	FE-ND	2.42	2.08	1.96
4	D	503	K8F	C14-C13	-2.41	1.52	1.54
2	B	501	HEM	FE-NB	2.40	2.08	1.96
2	B	501	HEM	C3C-C2C	-2.39	1.37	1.40
4	D	503	K8F	C12-C13	-2.34	1.52	1.54
4	A	503	K8F	C12-C13	-2.25	1.52	1.54
2	B	501	HEM	C3B-C2B	-2.25	1.32	1.37
4	C	503	K8F	C12-C13	-2.24	1.52	1.54
2	D	501	HEM	FE-NB	2.22	2.07	1.96
2	C	501	HEM	CAA-C2A	2.18	1.55	1.52
2	D	501	HEM	CMD-C2D	2.15	1.55	1.50

All (96) bond angle outliers are listed below:

Mol	Chain	Res	Type	Atoms	Z	Observed(°)	Ideal(°)
4	C	503	K8F	C02-N01-C06	7.49	123.77	118.10
3	A	502	H4B	C8A-C4A-C4	6.37	120.23	114.57
2	B	501	HEM	CBA-CAA-C2A	-6.10	102.20	112.62
4	A	503	K8F	C02-N01-C06	5.43	122.21	118.10
4	D	503	K8F	C02-N01-C06	5.23	122.06	118.10
3	D	502	H4B	C8A-C4A-C4	5.12	119.12	114.57
3	B	502	H4B	C8A-C4A-C4	5.02	119.03	114.57
3	C	502	H4B	C8A-C4A-C4	5.02	119.03	114.57
2	C	501	HEM	C4B-CHC-C1C	4.91	129.04	122.56
2	D	501	HEM	CBA-CAA-C2A	-4.16	105.53	112.62
2	C	501	HEM	CBA-CAA-C2A	-3.94	105.90	112.62
2	D	501	HEM	C1B-NB-C4B	3.89	109.09	105.07
4	C	503	K8F	C05-C06-N01	-3.88	118.78	122.90
3	B	502	H4B	N1-C2-N3	-3.81	119.44	125.42
2	A	501	HEM	C3B-C2B-C1B	3.79	109.30	106.49
2	B	501	HEM	C4D-ND-C1D	3.68	108.88	105.07
2	A	501	HEM	C1B-NB-C4B	3.68	108.87	105.07
2	D	501	HEM	CMC-C2C-C3C	3.68	131.56	124.68
2	A	501	HEM	CBA-CAA-C2A	-3.67	106.35	112.62
2	A	501	HEM	C4D-ND-C1D	3.62	108.82	105.07
4	D	503	K8F	F16-C13-F15	3.55	114.78	107.49

Continued on next page...

Continued from previous page...

Mol	Chain	Res	Type	Atoms	Z	Observed(°)	Ideal(°)
2	C	501	HEM	C1B-NB-C4B	3.55	108.73	105.07
2	D	501	HEM	C3B-C2B-C1B	3.48	109.07	106.49
4	B	503	K8F	F16-C13-F15	3.48	114.64	107.49
2	B	501	HEM	C4B-CHC-C1C	3.47	127.14	122.56
4	A	503	K8F	F16-C13-F15	3.47	114.60	107.49
3	B	502	H4B	C2-N3-C4	3.46	121.42	115.93
3	D	502	H4B	N1-C2-N3	-3.42	120.06	125.42
3	D	502	H4B	C2-N3-C4	3.41	121.35	115.93
4	C	503	K8F	F16-C13-F15	3.26	114.17	107.49
2	B	501	HEM	C3D-C4D-ND	-3.22	106.59	110.17
2	B	501	HEM	CBD-CAD-C3D	-3.19	103.77	112.63
2	B	501	HEM	CHD-C1D-ND	3.18	127.88	124.43
3	C	502	H4B	N1-C2-N3	-3.13	120.51	125.42
2	D	501	HEM	C4D-ND-C1D	3.10	108.27	105.07
3	C	502	H4B	C2-N3-C4	3.06	120.79	115.93
2	D	501	HEM	C4C-CHD-C1D	3.03	126.55	122.56
2	A	501	HEM	CBD-CAD-C3D	-3.02	104.25	112.63
2	A	501	HEM	C4B-CHC-C1C	3.01	126.53	122.56
2	C	501	HEM	C4D-ND-C1D	2.96	108.13	105.07
3	B	502	H4B	C2-N1-C8A	2.95	121.15	114.54
2	B	501	HEM	CHA-C4D-ND	2.90	127.97	124.38
6	A	512	GOL	O2-C2-C1	-2.88	96.42	109.12
2	B	501	HEM	CHC-C4B-C3B	2.84	128.92	124.57
2	B	501	HEM	C1B-NB-C4B	2.84	108.01	105.07
4	D	503	K8F	C05-C06-N01	-2.82	119.91	122.90
3	D	502	H4B	C4-C4A-N5	2.81	121.48	119.12
4	D	503	K8F	C10-C09-C08	-2.79	105.54	113.20
3	A	502	H4B	C4-C4A-N5	2.72	121.40	119.12
3	D	502	H4B	C2-N1-C8A	2.71	120.60	114.54
3	A	502	H4B	N1-C2-N3	-2.71	121.17	125.42
2	D	501	HEM	C2B-C1B-NB	-2.70	106.64	109.84
4	B	503	K8F	C10-C09-C08	-2.68	105.85	113.20
3	A	502	H4B	C2-N1-C8A	2.67	120.52	114.54
2	C	501	HEM	C3D-C4D-ND	-2.66	107.20	110.17
3	A	502	H4B	C2-N3-C4	2.65	120.14	115.93
4	A	503	K8F	C05-C06-N01	-2.64	120.10	122.90
3	C	502	H4B	C2-N1-C8A	2.58	120.33	114.54
2	C	501	HEM	CHC-C4B-C3B	2.58	128.52	124.57
2	B	501	HEM	C2D-C1D-ND	-2.56	106.81	109.88
2	A	501	HEM	C3D-C4D-ND	-2.55	107.33	110.17
6	A	512	GOL	O1-C1-C2	-2.54	98.02	110.20
4	A	503	K8F	C14-N11-C12	2.54	93.23	89.83

Continued on next page...

Continued from previous page...

Mol	Chain	Res	Type	Atoms	Z	Observed(°)	Ideal(°)
2	A	501	HEM	C2B-C1B-NB	-2.47	106.91	109.84
2	B	501	HEM	CMC-C2C-C3C	2.47	129.31	124.68
3	B	502	H4B	C4-C4A-N5	2.46	121.18	119.12
2	D	501	HEM	C3D-C4D-ND	-2.45	107.44	110.17
2	A	501	HEM	C4C-CHD-C1D	2.43	125.76	122.56
2	A	501	HEM	C4A-C3A-C2A	2.42	108.68	107.00
4	B	503	K8F	C14-N11-C12	2.42	93.07	89.83
2	C	501	HEM	CMC-C2C-C3C	2.42	129.21	124.68
4	B	503	K8F	C09-C10-N11	-2.37	107.85	113.84
2	C	501	HEM	C3B-C2B-C1B	2.32	108.21	106.49
3	B	502	H4B	O9-C9-C6	2.31	114.49	108.98
4	A	503	K8F	C04-C05-C06	-2.29	118.82	120.32
2	D	501	HEM	CMA-C3A-C4A	-2.28	124.95	128.46
2	B	501	HEM	CAB-C3B-C2B	-2.26	121.16	128.60
4	B	503	K8F	C05-C06-N01	-2.25	120.52	122.90
2	D	501	HEM	C4B-CHC-C1C	2.23	125.51	122.56
2	D	501	HEM	C2D-C1D-ND	-2.21	107.24	109.88
4	A	503	K8F	C09-C10-N11	-2.21	108.27	113.84
2	A	501	HEM	C2D-C1D-ND	-2.20	107.25	109.88
3	C	502	H4B	C4-C4A-N5	2.20	120.97	119.12
2	D	501	HEM	CMD-C2D-C1D	2.20	128.38	125.04
4	A	503	K8F	C08-C06-C05	2.18	124.10	121.22
2	B	501	HEM	C4B-C3B-C2B	2.17	108.84	107.11
2	A	501	HEM	CMC-C2C-C3C	2.14	128.69	124.68
3	D	502	H4B	N2-C2-N3	2.14	120.58	117.25
4	A	503	K8F	C10-C09-C08	-2.12	107.39	113.20
2	B	501	HEM	C3B-C2B-C1B	2.10	108.04	106.49
5	B	505	BTB	O4-C4-C2	2.08	117.15	111.44
2	D	501	HEM	CBD-CAD-C3D	-2.08	106.84	112.63
2	B	501	HEM	CMA-C3A-C4A	-2.07	125.28	128.46
4	D	503	K8F	C14-N11-C12	2.05	92.58	89.83
4	B	503	K8F	C02-N01-C06	2.04	119.65	118.10
3	B	502	H4B	N2-C2-N1	2.00	120.37	117.25

There are no chirality outliers.

All (109) torsion outliers are listed below:

Mol	Chain	Res	Type	Atoms
3	A	502	H4B	C7-C6-C9-O9
3	A	502	H4B	C7-C6-C9-C10
5	A	504	BTB	C1-C2-C3-O3
5	A	504	BTB	C4-C2-C3-O3

Continued on next page...

Continued from previous page...

Mol	Chain	Res	Type	Atoms
5	A	504	BTB	N-C2-C3-O3
5	A	504	BTB	C1-C2-C4-O4
5	A	504	BTB	C3-C2-C4-O4
5	A	504	BTB	N-C2-C4-O4
5	A	505	BTB	C1-C2-C3-O3
5	A	505	BTB	C4-C2-C3-O3
5	A	505	BTB	N-C2-C3-O3
5	A	505	BTB	C1-C2-C4-O4
5	B	504	BTB	O1-C1-C2-C3
5	B	504	BTB	O1-C1-C2-C4
5	B	504	BTB	O1-C1-C2-N
5	B	505	BTB	O1-C1-C2-C3
5	B	505	BTB	O1-C1-C2-C4
5	B	505	BTB	O1-C1-C2-N
5	B	505	BTB	C1-C2-C3-O3
5	B	505	BTB	C4-C2-C3-O3
5	B	505	BTB	N-C2-C3-O3
5	B	505	BTB	C1-C2-N-C5
5	B	505	BTB	C1-C2-N-C7
5	B	505	BTB	C3-C2-N-C5
5	B	505	BTB	C3-C2-N-C7
5	B	505	BTB	C4-C2-N-C7
5	B	509	BTB	O1-C1-C2-C3
5	B	509	BTB	O1-C1-C2-C4
5	B	509	BTB	O1-C1-C2-N
5	B	509	BTB	C1-C2-N-C5
5	B	509	BTB	C1-C2-N-C7
5	B	509	BTB	C3-C2-N-C5
5	B	509	BTB	C3-C2-N-C7
5	B	509	BTB	C4-C2-N-C5
5	B	509	BTB	C4-C2-N-C7
5	C	505	BTB	O1-C1-C2-C3
5	C	505	BTB	O1-C1-C2-C4
5	C	505	BTB	C1-C2-C3-O3
5	D	504	BTB	C3-C2-C4-O4
5	D	505	BTB	C1-C2-C3-O3
5	D	505	BTB	C4-C2-C3-O3
5	D	505	BTB	N-C7-C8-O8
6	A	507	GOL	O1-C1-C2-C3
6	A	507	GOL	C1-C2-C3-O3
6	A	507	GOL	O2-C2-C3-O3
6	A	512	GOL	O1-C1-C2-C3

Continued on next page...

Continued from previous page...

Mol	Chain	Res	Type	Atoms
6	A	512	GOL	C1-C2-C3-O3
6	B	506	GOL	C1-C2-C3-O3
6	B	506	GOL	O2-C2-C3-O3
6	C	506	GOL	O1-C1-C2-C3
6	C	506	GOL	C1-C2-C3-O3
6	C	507	GOL	O1-C1-C2-O2
6	C	507	GOL	O1-C1-C2-C3
6	C	508	GOL	O1-C1-C2-C3
2	C	501	HEM	C3D-CAD-CBD-CGD
4	C	503	K8F	C08-C09-C10-N11
4	A	503	K8F	C08-C09-C10-N11
5	A	505	BTB	N-C7-C8-O8
2	C	501	HEM	C4D-C3D-CAD-CBD
6	A	512	GOL	O2-C2-C3-O3
5	D	505	BTB	N-C5-C6-O6
5	B	505	BTB	N-C5-C6-O6
2	C	501	HEM	C2D-C3D-CAD-CBD
5	C	505	BTB	N-C7-C8-O8
6	B	506	GOL	O1-C1-C2-C3
6	C	508	GOL	C1-C2-C3-O3
6	C	508	GOL	O1-C1-C2-O2
2	C	501	HEM	C4B-C3B-CAB-CBB
5	B	505	BTB	N-C7-C8-O8
2	A	501	HEM	C2A-CAA-CBA-CGA
4	B	503	K8F	C08-C09-C10-N11
4	D	503	K8F	C08-C09-C10-N11
6	A	507	GOL	O1-C1-C2-O2
6	A	512	GOL	O1-C1-C2-O2
6	C	506	GOL	O1-C1-C2-O2
6	C	506	GOL	O2-C2-C3-O3
5	B	504	BTB	N-C7-C8-O8
5	A	506	BTB	N-C7-C8-O8
5	A	505	BTB	N-C5-C6-O6
5	B	509	BTB	N-C5-C6-O6
2	B	501	HEM	C4B-C3B-CAB-CBB
6	B	506	GOL	O1-C1-C2-O2
5	A	505	BTB	C3-C2-C4-O4
5	C	505	BTB	C4-C2-C3-O3
5	A	505	BTB	N-C2-C4-O4
5	B	505	BTB	C4-C2-N-C5
5	C	505	BTB	O1-C1-C2-N
5	C	505	BTB	N-C2-C3-O3

Continued on next page...

Continued from previous page...

Mol	Chain	Res	Type	Atoms
5	C	505	BTB	C1-C2-N-C7
5	C	505	BTB	C3-C2-N-C5
5	C	505	BTB	C3-C2-N-C7
5	C	505	BTB	C4-C2-N-C5
5	D	505	BTB	N-C2-C3-O3
6	C	508	GOL	O2-C2-C3-O3
5	B	509	BTB	N-C7-C8-O8
3	B	502	H4B	C7-C6-C9-C10
4	A	503	K8F	C05-C06-C08-C09
6	D	506	GOL	O1-C1-C2-O2
3	B	502	H4B	C7-C6-C9-O9
4	A	503	K8F	N01-C06-C08-C09
4	B	503	K8F	N01-C06-C08-C09
2	C	501	HEM	CAD-CBD-CGD-O1D
2	C	501	HEM	CAD-CBD-CGD-O2D
2	A	501	HEM	C4B-C3B-CAB-CBB
4	C	503	K8F	C06-C08-C09-C10
3	A	502	H4B	N5-C6-C9-O9
5	B	509	BTB	C3-C2-C4-O4
5	C	504	BTB	C4-C2-C3-O3
5	D	504	BTB	C1-C2-C4-O4

There are no ring outliers.

22 monomers are involved in 43 short contacts:

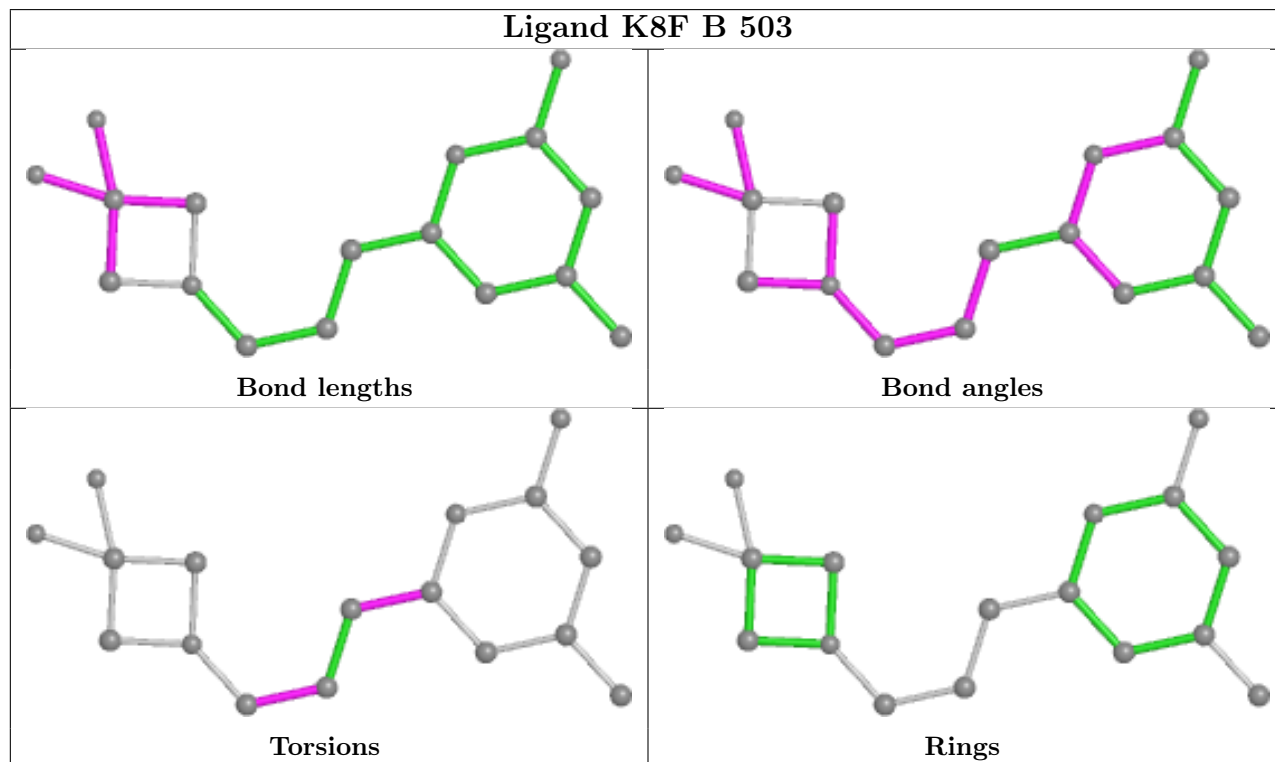
Mol	Chain	Res	Type	Clashes	Symm-Clashes
5	D	505	BTB	2	0
2	B	501	HEM	3	0
5	A	505	BTB	3	0
5	C	505	BTB	1	0
3	B	502	H4B	2	0
6	A	508	GOL	1	0
3	A	502	H4B	1	0
5	D	504	BTB	4	0
3	C	502	H4B	1	0
5	A	504	BTB	2	0
5	B	504	BTB	3	0
2	D	501	HEM	1	0
5	A	506	BTB	1	0
2	C	501	HEM	2	0
5	C	504	BTB	4	0
2	A	501	HEM	1	0

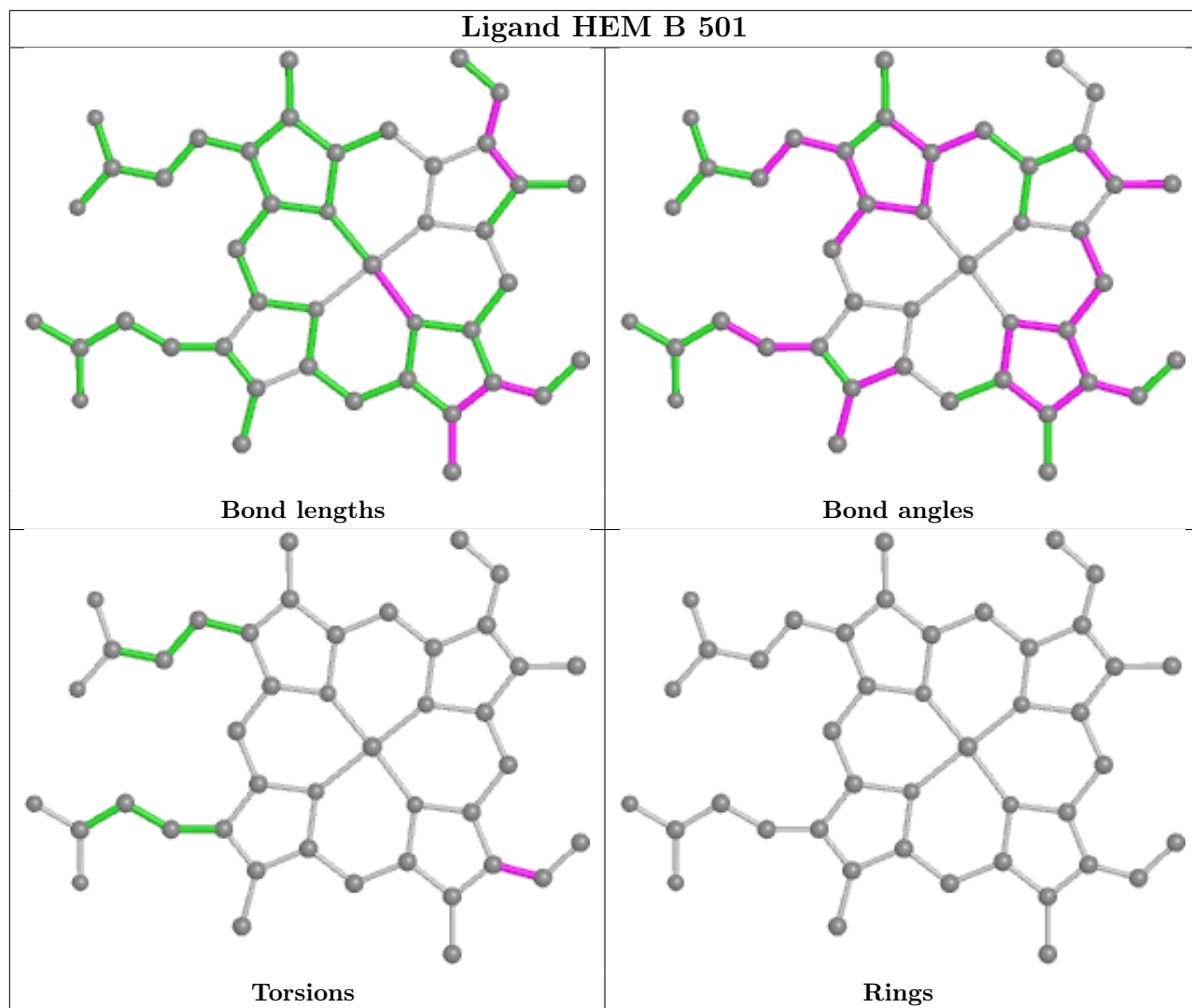
Continued on next page...

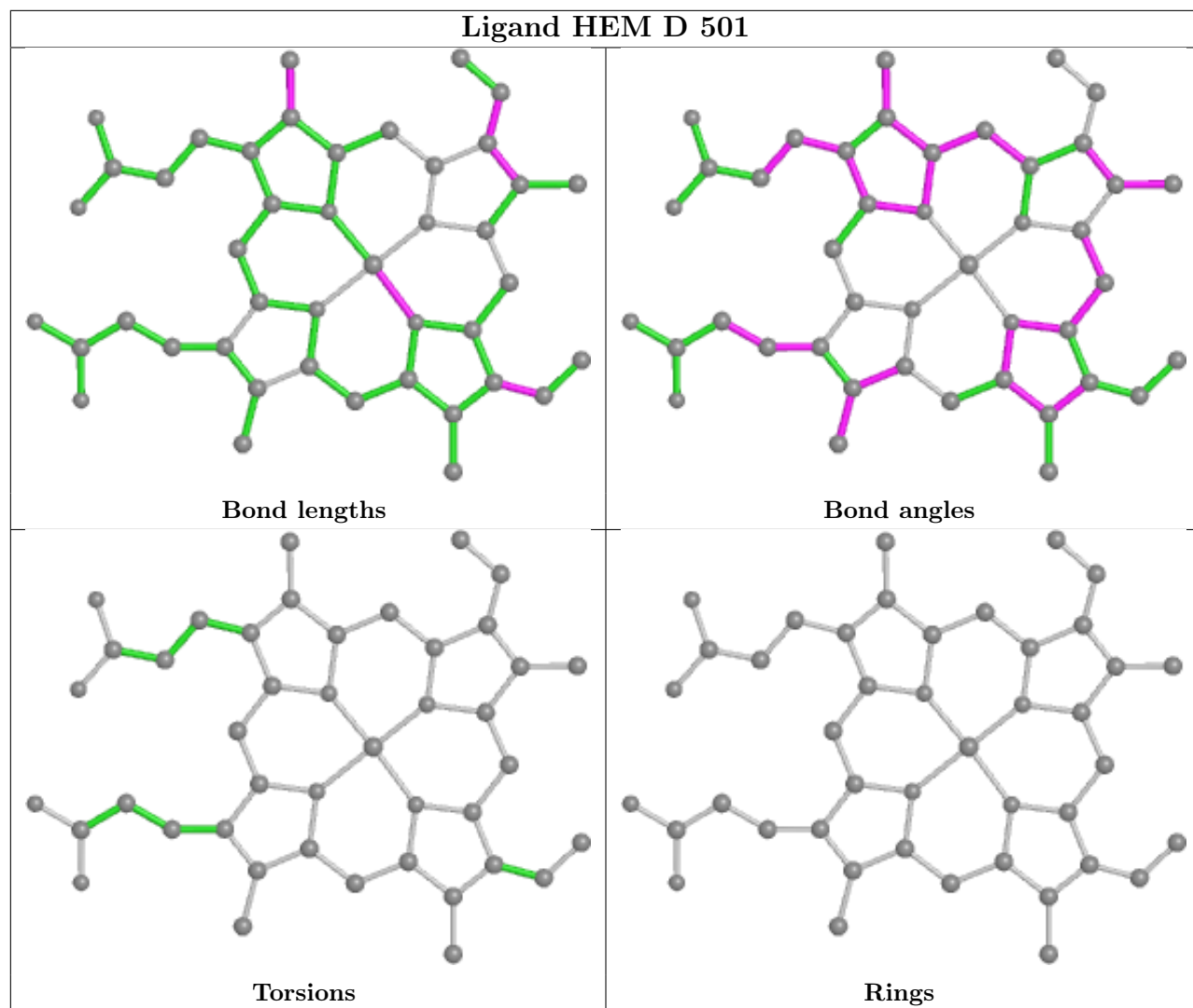
Continued from previous page...

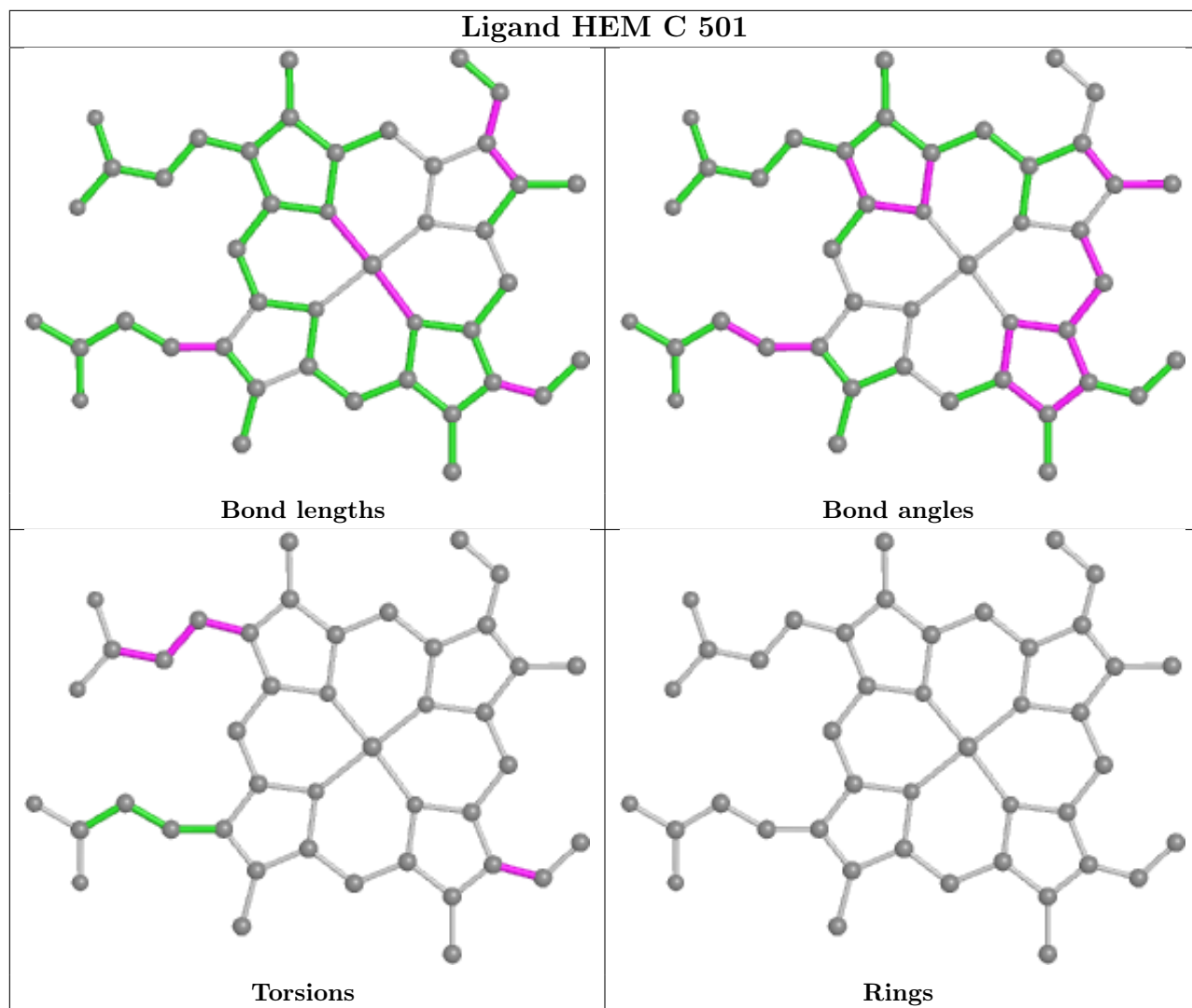
Mol	Chain	Res	Type	Clashes	Symm-Clashes
6	D	506	GOL	1	0
3	D	502	H4B	1	0
4	C	503	K8F	1	0
6	B	506	GOL	1	0
5	B	505	BTB	5	1
5	B	509	BTB	1	0

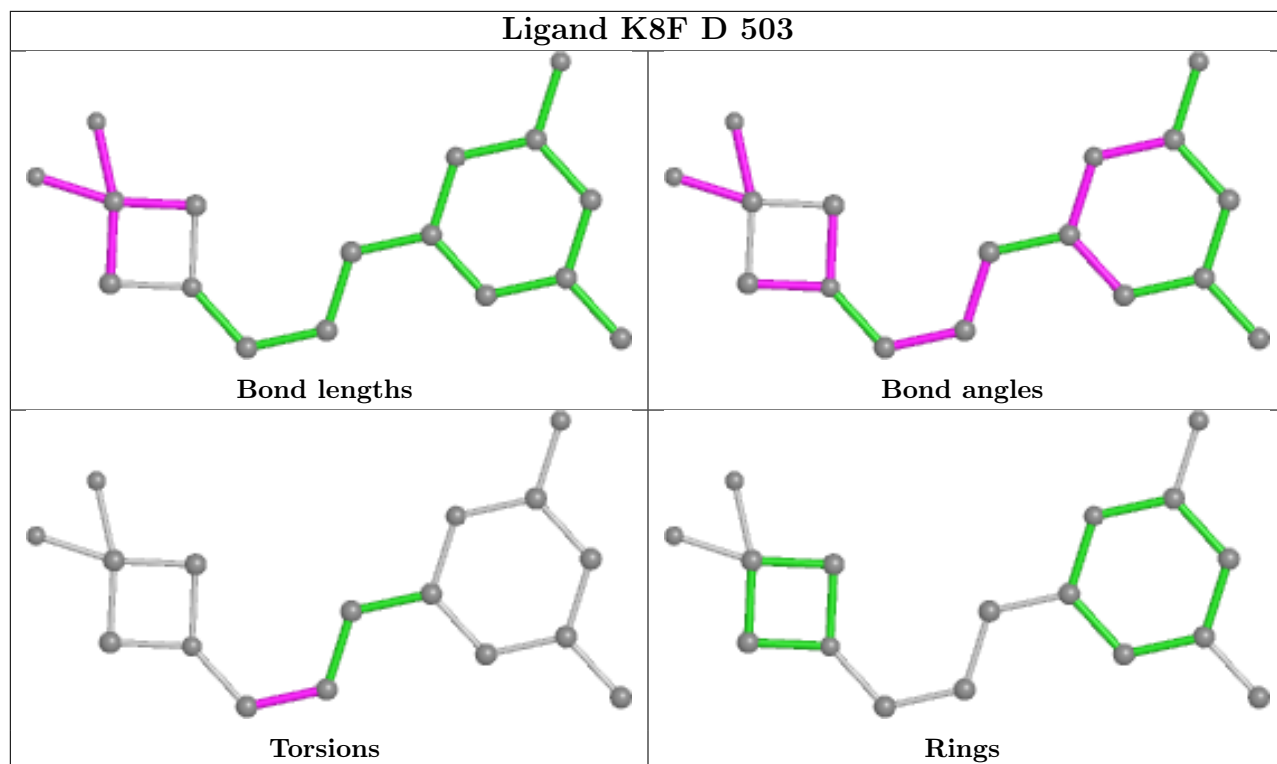
The following is a two-dimensional graphical depiction of Mogul quality analysis of bond lengths, bond angles, torsion angles, and ring geometry for all instances of the Ligand of Interest. In addition, ligands with molecular weight > 250 and outliers as shown on the validation Tables will also be included. For torsion angles, if less than 5% of the Mogul distribution of torsion angles is within 10 degrees of the torsion angle in question, then that torsion angle is considered an outlier. Any bond that is central to one or more torsion angles identified as an outlier by Mogul will be highlighted in the graph. For rings, the root-mean-square deviation (RMSD) between the ring in question and similar rings identified by Mogul is calculated over all ring torsion angles. If the average RMSD is greater than 60 degrees and the minimal RMSD between the ring in question and any Mogul-identified rings is also greater than 60 degrees, then that ring is considered an outlier. The outliers are highlighted in purple. The color gray indicates Mogul did not find sufficient equivalents in the CSD to analyse the geometry.

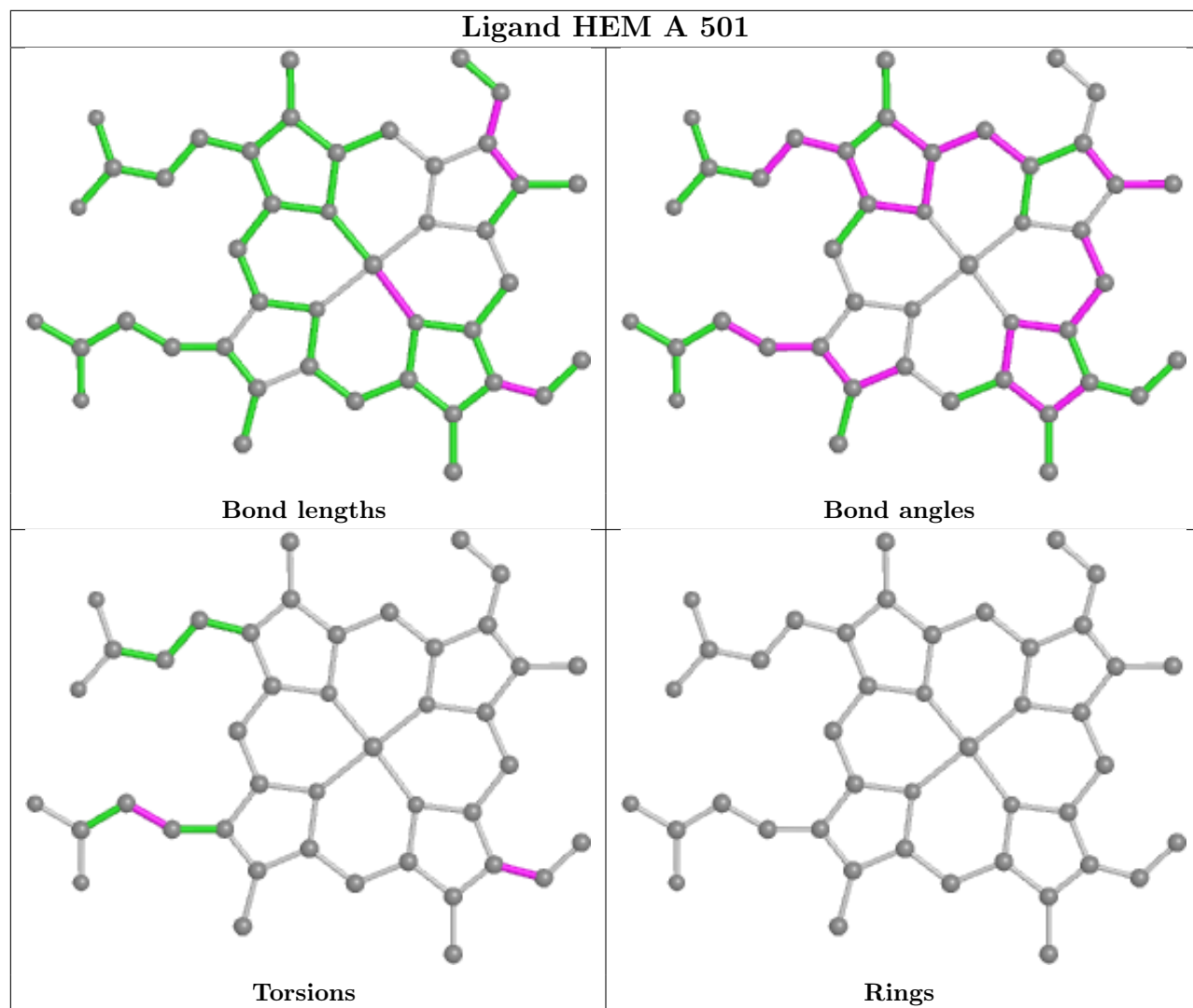


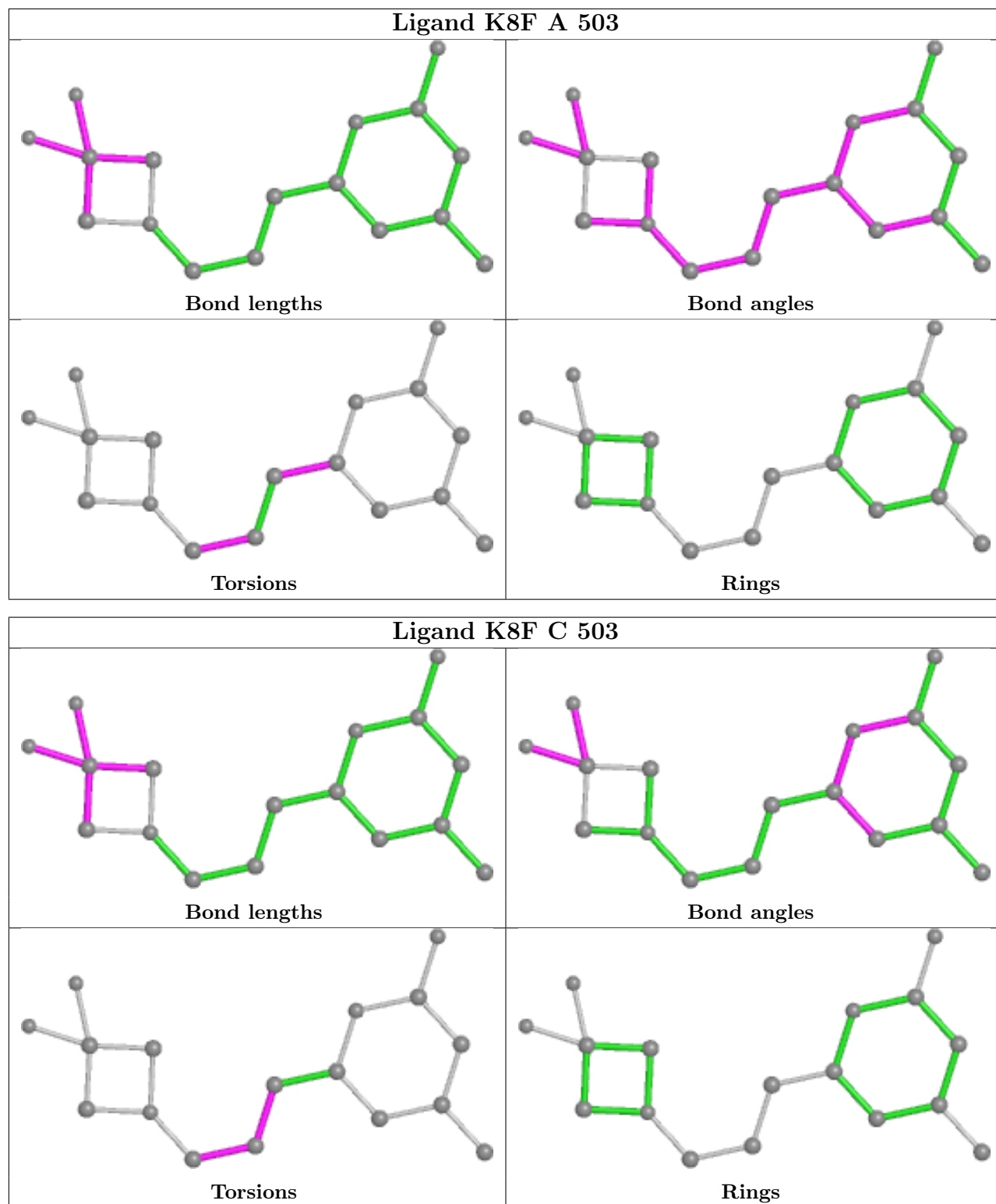












5.7 Other polymers [\(i\)](#)

There are no such residues in this entry.

5.8 Polymer linkage issues

There are no chain breaks in this entry.

6 Fit of model and data

6.1 Protein, DNA and RNA chains

In the following table, the column labelled ‘#RSRZ > 2’ contains the number (and percentage) of RSRZ outliers, followed by percent RSRZ outliers for the chain as percentile scores relative to all X-ray entries and entries of similar resolution. The OWAB column contains the minimum, median, 95th percentile and maximum values of the occupancy-weighted average B-factor per residue. The column labelled ‘Q < 0.9’ lists the number of (and percentage) of residues with an average occupancy less than 0.9.

Mol	Chain	Analysed	<RSRZ>	#RSRZ>2	OWAB(Å ²)	Q<0.9
1	A	401/440 (91%)	0.22	20 (4%) 28 28	27, 61, 116, 141	0
1	B	401/440 (91%)	-0.15	1 (0%) 95 94	24, 41, 79, 119	0
1	C	402/440 (91%)	0.09	7 (1%) 70 68	29, 56, 102, 132	0
1	D	402/440 (91%)	-0.17	3 (0%) 87 87	22, 41, 66, 120	0
All	All	1606/1760 (91%)	-0.00	31 (1%) 66 65	22, 49, 100, 141	0

All (31) RSRZ outliers are listed below:

Mol	Chain	Res	Type	RSRZ
1	C	238	ARG	6.1
1	A	204	ALA	4.1
1	A	280	THR	3.7
1	A	238	ARG	3.5
1	A	140	ARG	3.5
1	D	89	GLN	3.4
1	C	202	ARG	3.3
1	A	123	LEU	3.1
1	A	281	PRO	2.9
1	A	283	ASN	2.8
1	A	167	GLU	2.8
1	A	480	TRP	2.7
1	A	254	TYR	2.7
1	A	202	ARG	2.7
1	A	305	LEU	2.7
1	C	161	GLY	2.6
1	C	204	ALA	2.6
1	A	106	PRO	2.5
1	A	284	GLY	2.5
1	D	124	LEU	2.4
1	A	252	ALA	2.4

Continued on next page...

Continued from previous page...

Mol	Chain	Res	Type	RSRZ
1	C	292	LEU	2.4
1	A	468	PHE	2.3
1	C	130	PHE	2.3
1	A	134	TYR	2.3
1	C	207	MET	2.1
1	A	88	ALA	2.1
1	B	131	ILE	2.1
1	A	345	GLY	2.1
1	A	346	LEU	2.1
1	D	90	GLN	2.1

6.2 Non-standard residues in protein, DNA, RNA chains [i](#)

There are no non-standard protein/DNA/RNA residues in this entry.

6.3 Carbohydrates [i](#)

There are no monosaccharides in this entry.

6.4 Ligands [i](#)

In the following table, the Atoms column lists the number of modelled atoms in the group and the number defined in the chemical component dictionary. The B-factors column lists the minimum, median, 95th percentile and maximum values of B factors of atoms in the group. The column labelled 'Q< 0.9' lists the number of atoms with occupancy less than 0.9.

Mol	Type	Chain	Res	Atoms	RSCC	RSR	B-factors(Å ²)	Q<0.9
6	GOL	C	507	6/6	0.81	0.13	57,62,73,76	0
6	GOL	A	508	6/6	0.83	0.14	60,70,74,80	0
6	GOL	C	508	6/6	0.84	0.12	72,78,79,79	0
5	BTB	C	505	14/14	0.85	0.13	79,99,109,110	0
5	BTB	A	506	14/14	0.88	0.11	65,84,91,94	0
5	BTB	D	504	14/14	0.89	0.17	55,75,91,95	0
5	BTB	B	509	14/14	0.89	0.18	36,63,74,75	0
5	BTB	D	505	14/14	0.90	0.15	55,66,74,75	0
5	BTB	A	505	14/14	0.90	0.15	56,65,72,73	0
8	GD	A	510	1/1	0.91	0.13	97,97,97,97	1
6	GOL	C	506	6/6	0.93	0.17	44,54,59,64	0
4	K8F	A	503	17/17	0.93	0.14	43,55,94,96	0
3	H4B	A	502	17/17	0.94	0.12	48,61,66,67	0

Continued on next page...

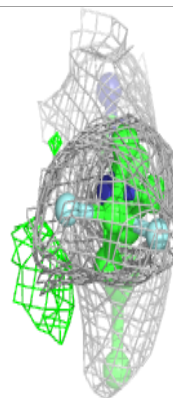
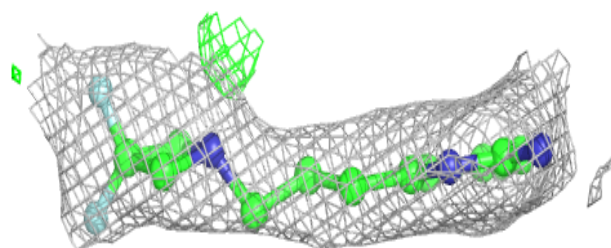
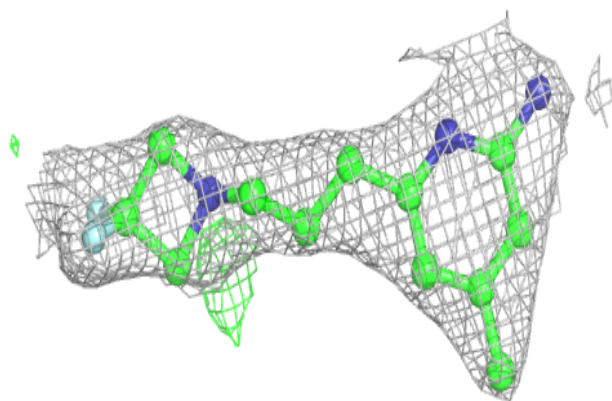
Continued from previous page...

Mol	Type	Chain	Res	Atoms	RSCC	RSR	B-factors(\AA^2)	Q<0.9
6	GOL	A	507	6/6	0.94	0.14	44,50,62,67	0
5	BTB	B	504	14/14	0.94	0.13	30,51,72,74	0
6	GOL	B	506	6/6	0.94	0.27	65,69,75,76	0
5	BTB	B	505	14/14	0.94	0.13	40,69,78,80	0
4	K8F	B	503	17/17	0.94	0.13	24,38,84,86	0
4	K8F	C	503	17/17	0.94	0.12	34,50,86,92	0
6	GOL	D	506	6/6	0.94	0.13	77,81,82,86	0
3	H4B	C	502	17/17	0.94	0.13	44,53,60,61	0
5	BTB	C	504	14/14	0.95	0.13	26,62,73,75	0
5	BTB	A	504	14/14	0.95	0.16	71,79,90,94	0
3	H4B	D	502	17/17	0.95	0.09	26,42,50,51	0
7	CL	A	509	1/1	0.95	0.08	72,72,72,72	0
4	K8F	D	503	17/17	0.95	0.12	22,36,81,83	0
6	GOL	A	512	6/6	0.96	0.13	28,40,56,61	0
3	H4B	B	502	17/17	0.96	0.11	25,40,47,50	0
2	HEM	A	501	43/43	0.97	0.14	34,59,80,103	0
2	HEM	C	501	43/43	0.97	0.13	31,47,66,76	0
2	HEM	B	501	43/43	0.99	0.12	22,30,47,68	0
7	CL	B	507	1/1	0.99	0.07	42,42,42,42	0
7	CL	C	509	1/1	0.99	0.04	42,42,42,42	0
2	HEM	D	501	43/43	0.99	0.12	21,29,48,66	0
8	GD	C	510	1/1	0.99	0.13	79,79,79,79	1
9	ZN	A	511	1/1	0.99	0.14	46,46,46,46	0
9	ZN	C	511	1/1	0.99	0.11	34,34,34,34	0
8	GD	D	508	1/1	1.00	0.15	50,50,50,50	0
8	GD	B	508	1/1	1.00	0.15	45,45,45,45	0
7	CL	D	507	1/1	1.00	0.07	41,41,41,41	0

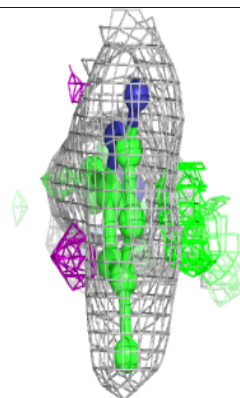
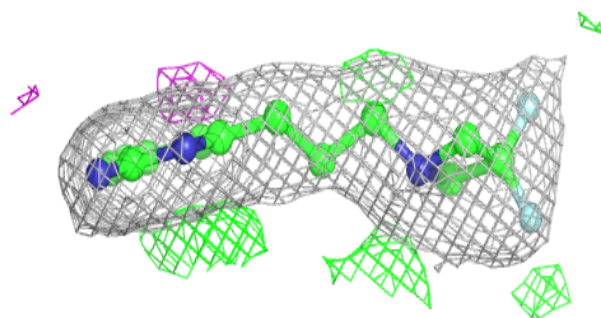
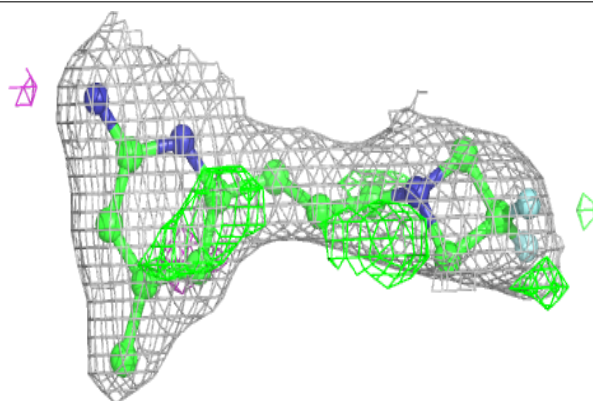
The following is a graphical depiction of the model fit to experimental electron density of all instances of the Ligand of Interest. In addition, ligands with molecular weight > 250 and outliers as shown on the geometry validation Tables will also be included. Each fit is shown from different orientation to approximate a three-dimensional view.

Electron density around K8F A 503:

$2mF_o-DF_c$ (at 0.7 rmsd) in gray
 mF_o-DF_c (at 3 rmsd) in purple (negative)
and green (positive)

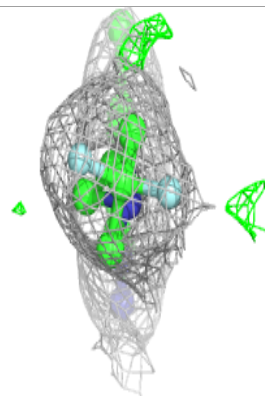
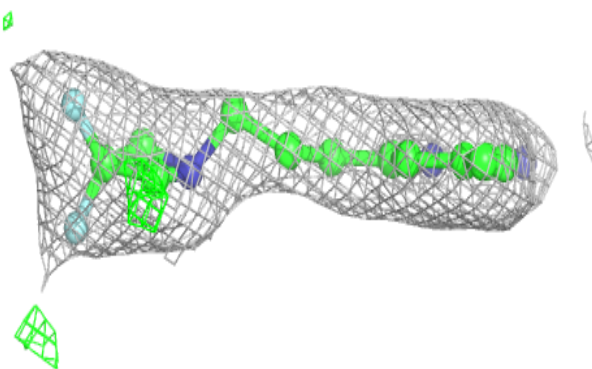
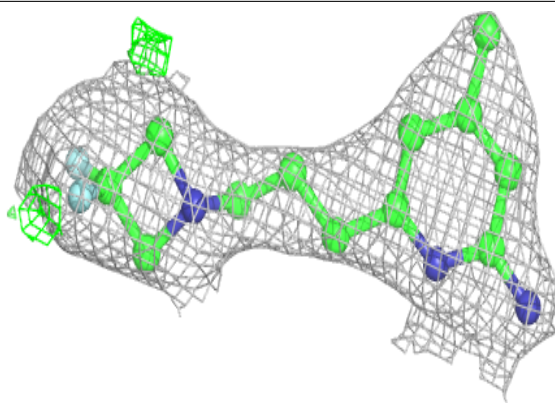
**Electron density around K8F B 503:**

$2mF_o-DF_c$ (at 0.7 rmsd) in gray
 mF_o-DF_c (at 3 rmsd) in purple (negative)
and green (positive)

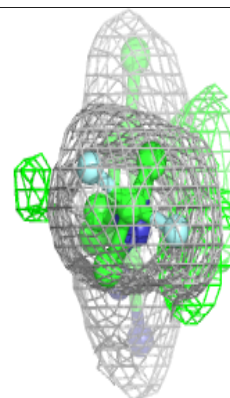
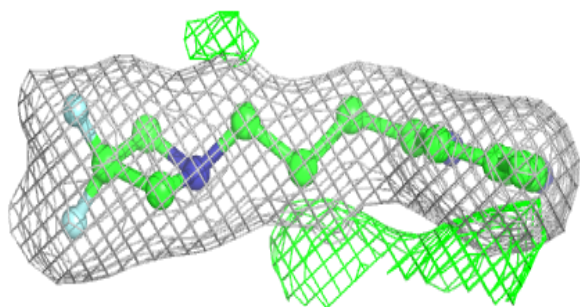
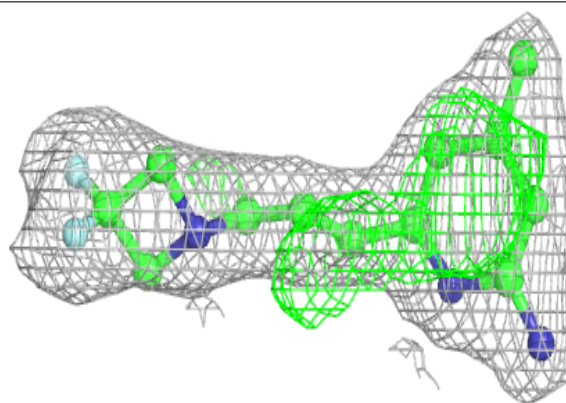


Electron density around K8F C 503:

$2mF_o-DF_c$ (at 0.7 rmsd) in gray
 mF_o-DF_c (at 3 rmsd) in purple (negative)
and green (positive)

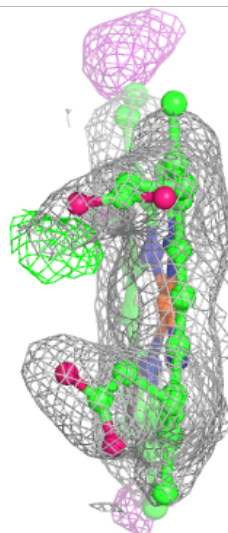
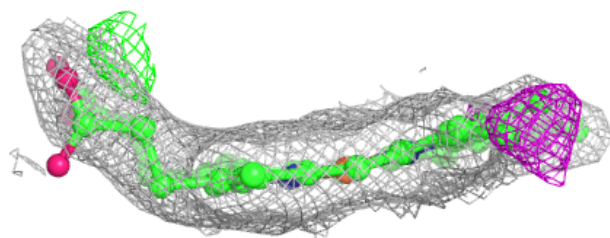
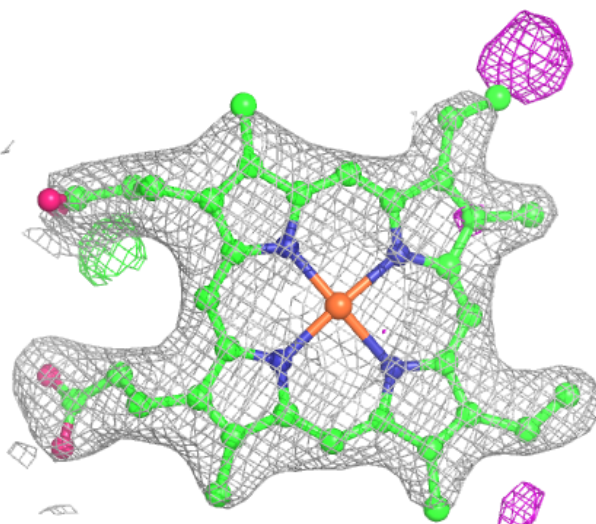
**Electron density around K8F D 503:**

$2mF_o-DF_c$ (at 0.7 rmsd) in gray
 mF_o-DF_c (at 3 rmsd) in purple (negative)
and green (positive)



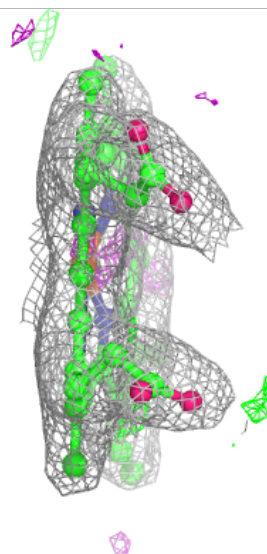
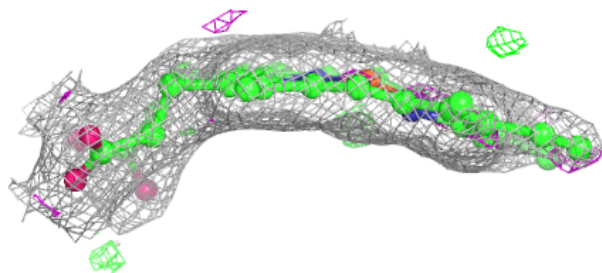
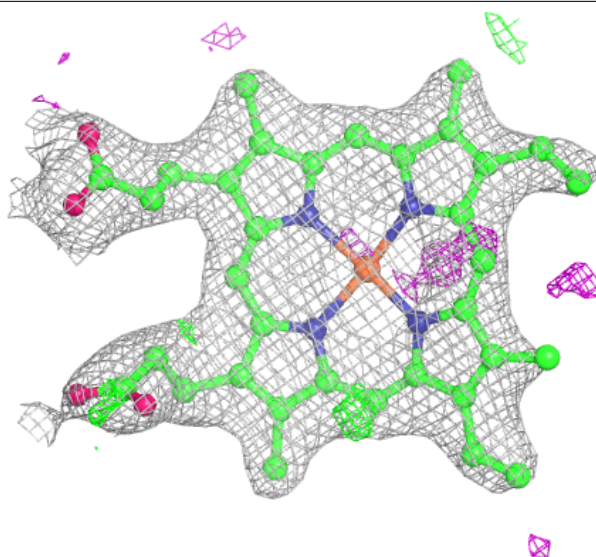
Electron density around HEM A 501:

$2mF_o-DF_c$ (at 0.7 rmsd) in gray
 mF_o-DF_c (at 3 rmsd) in purple (negative)
and green (positive)



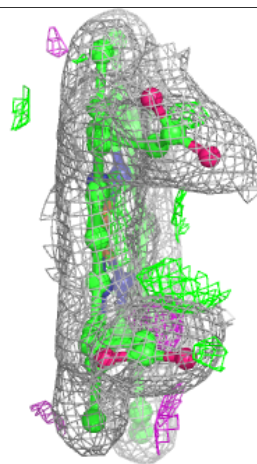
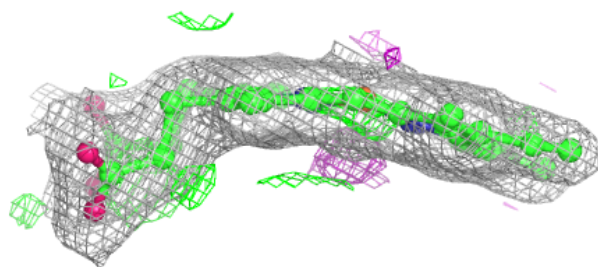
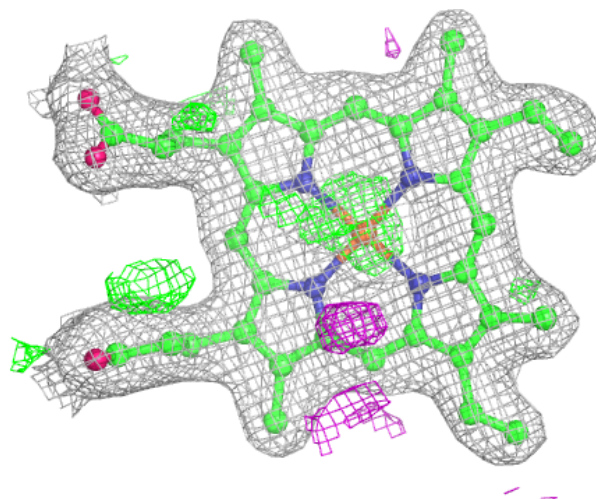
Electron density around HEM C 501:

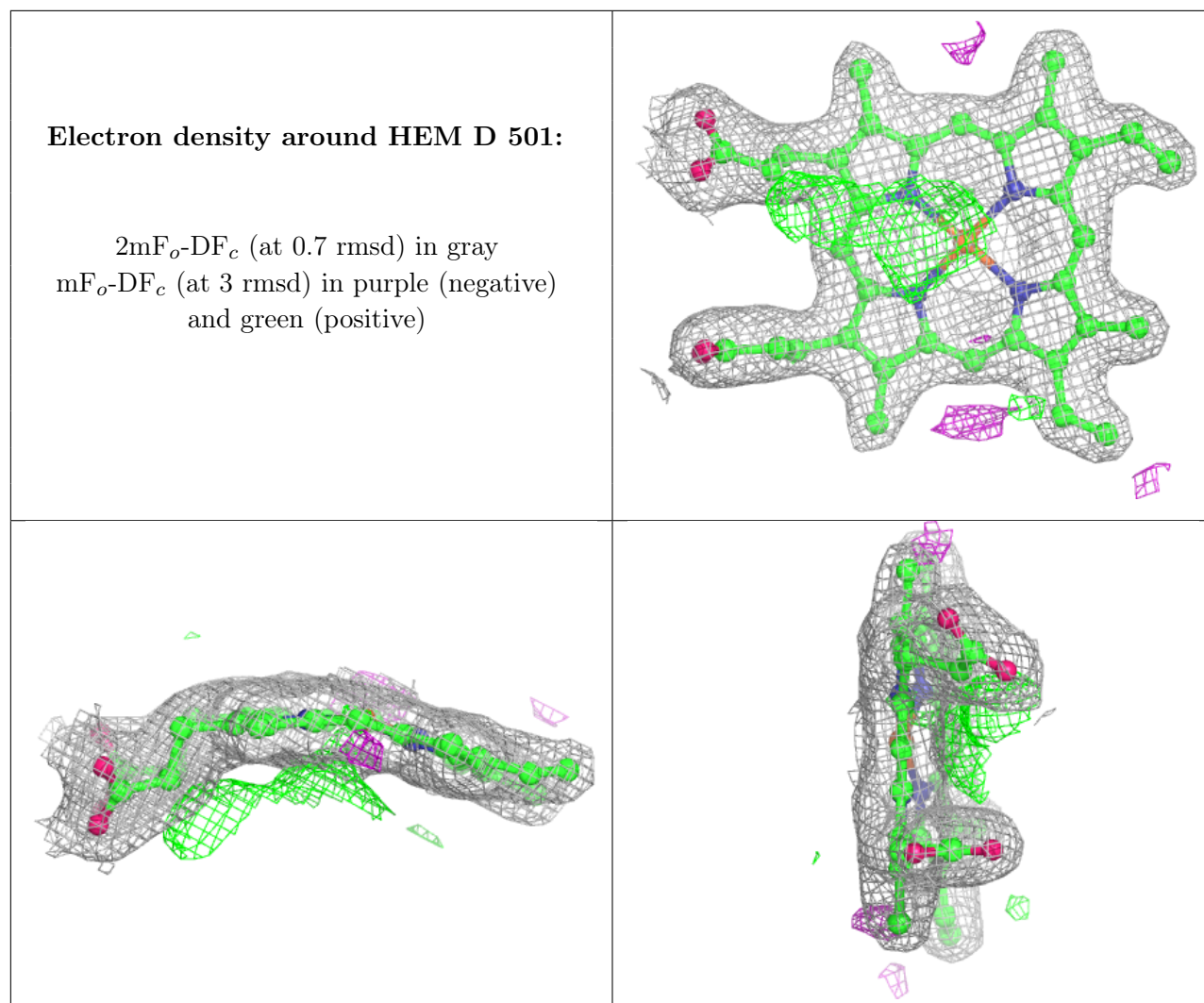
$2mF_o-DF_c$ (at 0.7 rmsd) in gray
 mF_o-DF_c (at 3 rmsd) in purple (negative)
and green (positive)



Electron density around HEM B 501:

$2mF_o-DF_c$ (at 0.7 rmsd) in gray
 mF_o-DF_c (at 3 rmsd) in purple (negative)
and green (positive)





6.5 Other polymers [i](#)

There are no such residues in this entry.