



# Full wwPDB X-ray Structure Validation Report ⓘ

May 24, 2020 – 11:38 am BST

PDB ID : 3TO3  
Title : Crystal Structure of Petrobactin Biosynthesis Protein AsbB from *Bacillus anthracis* str. Sterne  
Authors : Kim, Y.; Eschenfeldt, W.; Stols, L.; Joachimiak, A.; Midwest Center for Structural Genomics (MCSG)  
Deposited on : 2011-09-03  
Resolution : 2.38 Å(reported)

This is a Full wwPDB X-ray Structure Validation Report for a publicly released PDB entry.

We welcome your comments at [validation@mail.wwpdb.org](mailto:validation@mail.wwpdb.org)

A user guide is available at

<https://www.wwpdb.org/validation/2017/XrayValidationReportHelp>

with specific help available everywhere you see the ⓘ symbol.

---

The following versions of software and data (see [references ⓘ](#)) were used in the production of this report:

MolProbity : 4.02b-467  
Mogul : 1.8.5 (274361), CSD as541be (2020)  
Xtriage (Phenix) : 1.13  
EDS : 2.11  
buster-report : 1.1.7 (2018)  
Percentile statistics : 20191225.v01 (using entries in the PDB archive December 25th 2019)  
Refmac : 5.8.0158  
CCP4 : 7.0.044 (Gargrove)  
Ideal geometry (proteins) : Engh & Huber (2001)  
Ideal geometry (DNA, RNA) : Parkinson et al. (1996)  
Validation Pipeline (wwPDB-VP) : 2.11

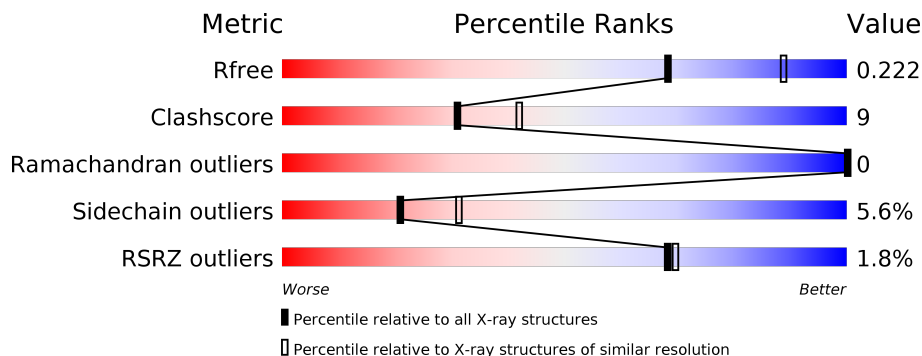
# 1 Overall quality at a glance

The following experimental techniques were used to determine the structure:

*X-RAY DIFFRACTION*

The reported resolution of this entry is 2.38 Å.

Percentile scores (ranging between 0-100) for global validation metrics of the entry are shown in the following graphic. The table shows the number of entries on which the scores are based.



Metric	Whole archive (#Entries)	Similar resolution (#Entries, resolution range(Å))
$R_{free}$	130704	5509 (2.40-2.36)
Clashscore	141614	6082 (2.40-2.36)
Ramachandran outliers	138981	5973 (2.40-2.36)
Sidechain outliers	138945	5975 (2.40-2.36)
RSRZ outliers	127900	5397 (2.40-2.36)

The table below summarises the geometric issues observed across the polymeric chains and their fit to the electron density. The red, orange, yellow and green segments on the lower bar indicate the fraction of residues that contain outliers for  $\geq 3$ , 2, 1 and 0 types of geometric quality criteria respectively. A grey segment represents the fraction of residues that are not modelled. The numeric value for each fraction is indicated below the corresponding segment, with a dot representing fractions  $\leq 5\%$ . The upper red bar (where present) indicates the fraction of residues that have poor fit to the electron density. The numeric value is given above the bar.

Mol	Chain	Length	Quality of chain
1	A	619	 3% (red), 77% (green), 17% (yellow), 3% (orange), 2% (grey)
1	B	619	 0% (red), 75% (green), 18% (yellow), 7% (orange), 0% (grey)

## 2 Entry composition [i](#)

There are 6 unique types of molecules in this entry. The entry contains 10428 atoms, of which 0 are hydrogens and 0 are deuteriums.

In the tables below, the ZeroOcc column contains the number of atoms modelled with zero occupancy, the AltConf column contains the number of residues with at least one atom in alternate conformation and the Trace column contains the number of residues modelled with at most 2 atoms.

- Molecule 1 is a protein called Petrobactin biosynthesis protein AsbB.

Mol	Chain	Residues	Atoms						ZeroOcc	AltConf	Trace
			Total	C	N	O	S	Se			
1	A	593	4993	3205	852	916	7	13	0	6	0
1	B	595	5069	3248	868	931	8	14	0	14	0

There are 18 discrepancies between the modelled and reference sequences:

Chain	Residue	Modelled	Actual	Comment	Reference
A	-2	SER	-	EXPRESSION TAG	UNP Q81RQ8
A	-1	ASN	-	EXPRESSION TAG	UNP Q81RQ8
A	0	ALA	-	EXPRESSION TAG	UNP Q81RQ8
A	611	GLU	-	EXPRESSION TAG	UNP Q81RQ8
A	612	ASN	-	EXPRESSION TAG	UNP Q81RQ8
A	613	LEU	-	EXPRESSION TAG	UNP Q81RQ8
A	614	TYR	-	EXPRESSION TAG	UNP Q81RQ8
A	615	PHE	-	EXPRESSION TAG	UNP Q81RQ8
A	616	GLN	-	EXPRESSION TAG	UNP Q81RQ8
B	-2	SER	-	EXPRESSION TAG	UNP Q81RQ8
B	-1	ASN	-	EXPRESSION TAG	UNP Q81RQ8
B	0	ALA	-	EXPRESSION TAG	UNP Q81RQ8
B	611	GLU	-	EXPRESSION TAG	UNP Q81RQ8
B	612	ASN	-	EXPRESSION TAG	UNP Q81RQ8
B	613	LEU	-	EXPRESSION TAG	UNP Q81RQ8
B	614	TYR	-	EXPRESSION TAG	UNP Q81RQ8
B	615	PHE	-	EXPRESSION TAG	UNP Q81RQ8
B	616	GLN	-	EXPRESSION TAG	UNP Q81RQ8

- Molecule 2 is CHLORIDE ION (three-letter code: CL) (formula: Cl).

Mol	Chain	Residues	Atoms		ZeroOcc	AltConf
2	B	1	Total	Cl	0	0
			1	1		

*Continued on next page...*

Continued from previous page...

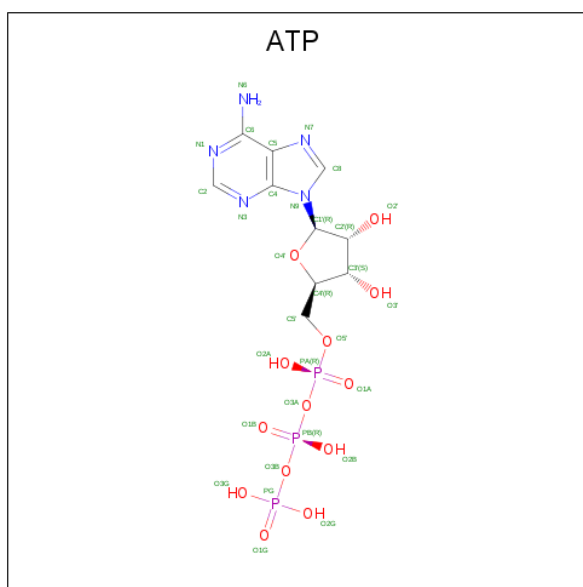
Mol	Chain	Residues	Atoms	ZeroOcc	AltConf
2	A	1	Total Cl 1 1	0	0

- Molecule 3 is 1,2-ETHANEDIOL (three-letter code: EDO) (formula: C<sub>2</sub>H<sub>6</sub>O<sub>2</sub>).



Mol	Chain	Residues	Atoms	ZeroOcc	AltConf
3	A	1	Total C O 4 2 2	0	0
3	B	1	Total C O 4 2 2	0	0
3	B	1	Total C O 4 2 2	0	0

- Molecule 4 is ADENOSINE-5'-TRIPHOSPHATE (three-letter code: ATP) (formula: C<sub>10</sub>H<sub>16</sub>N<sub>5</sub>O<sub>13</sub>P<sub>3</sub>).



Mol	Chain	Residues	Atoms					ZeroOcc	AltConf
			Total	C	N	O	P		
4	B	1	27	10	5	10	2	0	0

- Molecule 5 is MAGNESIUM ION (three-letter code: MG) (formula: Mg).

Mol	Chain	Residues	Atoms		ZeroOcc	AltConf
			Total	Mg		
5	B	1	1	1	0	0

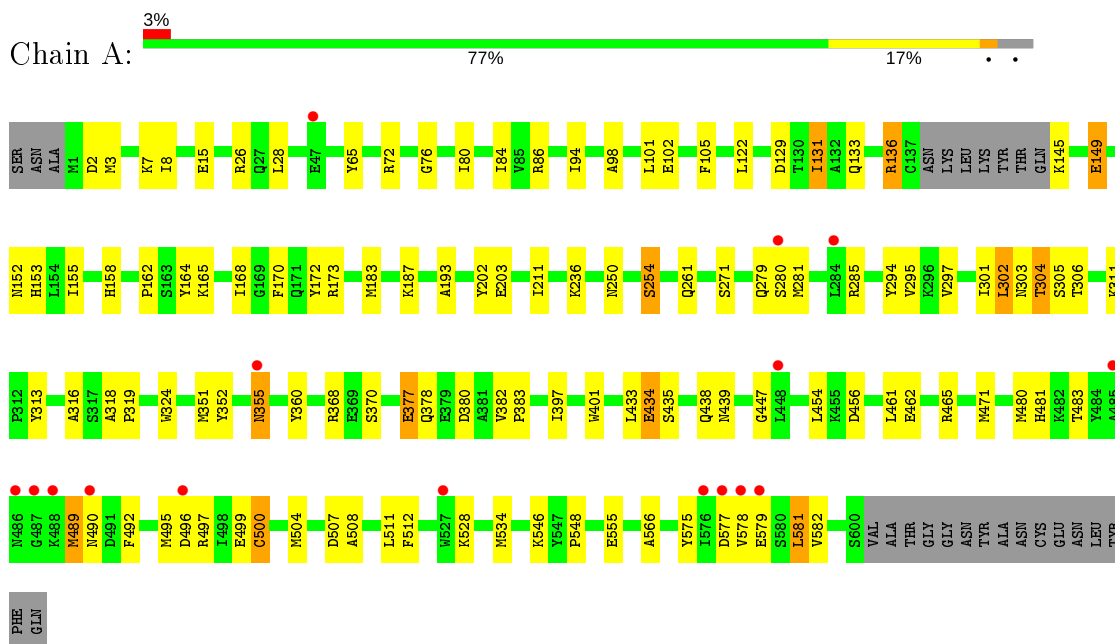
- Molecule 6 is water.

Mol	Chain	Residues	Atoms		ZeroOcc	AltConf
			Total	O		
6	A	141	141	141	0	0
6	B	183	183	183	0	0

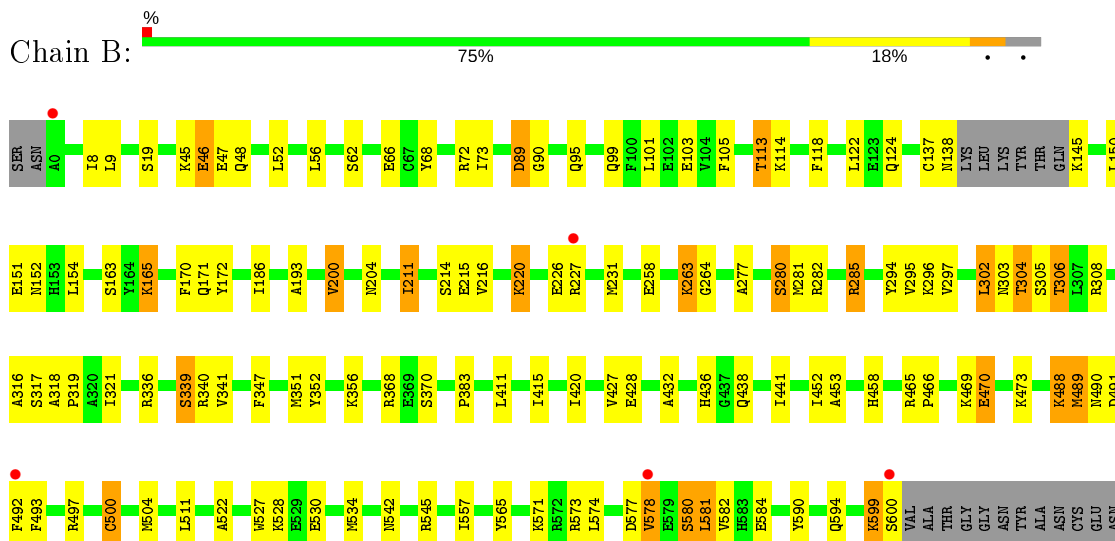
### 3 Residue-property plots

These plots are drawn for all protein, RNA and DNA chains in the entry. The first graphic for a chain summarises the proportions of the various outlier classes displayed in the second graphic. The second graphic shows the sequence view annotated by issues in geometry and electron density. Residues are color-coded according to the number of geometric quality criteria for which they contain at least one outlier: green = 0, yellow = 1, orange = 2 and red = 3 or more. A red dot above a residue indicates a poor fit to the electron density ( $RSRZ > 2$ ). Stretches of 2 or more consecutive residues without any outlier are shown as a green connector. Residues present in the sample, but not in the model, are shown in grey.

- Molecule 1: Petrobactin biosynthesis protein AsbB



- Molecule 1: Petrobactin biosynthesis protein AsbB



LEU  
TYR  
PHE  
GLN

## 4 Data and refinement statistics

Property	Value	Source
Space group	P 21 21 21	Depositor
Cell constants a, b, c, $\alpha$ , $\beta$ , $\gamma$	64.26Å 155.92Å 156.24Å 90.00° 90.00° 90.00°	Depositor
Resolution (Å)	49.63 – 2.38 49.63 – 2.38	Depositor EDS
% Data completeness (in resolution range)	98.8 (49.63-2.38) 98.8 (49.63-2.38)	Depositor EDS
$R_{merge}$	(Not available)	Depositor
$R_{sym}$	0.09	Depositor
$\langle I/\sigma(I) \rangle$ <sup>1</sup>	3.27 (at 2.39Å)	Xtrriage
Refinement program	PHENIX (phenix.refine: dev_851)	Depositor
R, $R_{free}$	0.172 , 0.227 0.167 , 0.222	Depositor DCC
$R_{free}$ test set	3180 reflections (5.06%)	wwPDB-VP
Wilson B-factor (Å <sup>2</sup> )	50.9	Xtrriage
Anisotropy	0.294	Xtrriage
Bulk solvent $k_{sol}$ (e/Å <sup>3</sup> ), $B_{sol}$ (Å <sup>2</sup> )	0.30 , 42.1	EDS
L-test for twinning <sup>2</sup>	$\langle  L  \rangle = 0.50$ , $\langle L^2 \rangle = 0.33$	Xtrriage
Estimated twinning fraction	0.007 for -h,l,k	Xtrriage
$F_o, F_c$ correlation	0.97	EDS
Total number of atoms	10428	wwPDB-VP
Average B, all atoms (Å <sup>2</sup> )	59.0	wwPDB-VP

Xtrriage's analysis on translational NCS is as follows: *The largest off-origin peak in the Patterson function is 3.58% of the height of the origin peak. No significant pseudotranslation is detected.*

<sup>1</sup>Intensities estimated from amplitudes.

<sup>2</sup>Theoretical values of  $\langle |L| \rangle$ ,  $\langle L^2 \rangle$  for acentric reflections are 0.5, 0.333 respectively for untwinned datasets, and 0.375, 0.2 for perfectly twinned datasets.



## 5 Model quality [i](#)

### 5.1 Standard geometry [i](#)

Bond lengths and bond angles in the following residue types are not validated in this section: MG, EDO, ATP, CL

The Z score for a bond length (or angle) is the number of standard deviations the observed value is removed from the expected value. A bond length (or angle) with  $|Z| > 5$  is considered an outlier worth inspection. RMSZ is the root-mean-square of all Z scores of the bond lengths (or angles).

Mol	Chain	Bond lengths		Bond angles	
		RMSZ	# Z  >5	RMSZ	# Z  >5
1	A	0.58	1/5098 (0.0%)	0.70	1/6867 (0.0%)
1	B	0.58	0/5175	0.70	2/6970 (0.0%)
All	All	0.58	1/10273 (0.0%)	0.70	3/13837 (0.0%)

All (1) bond length outliers are listed below:

Mol	Chain	Res	Type	Atoms	Z	Observed(Å)	Ideal(Å)
1	A	500	CYS	CB-SG	5.59	1.91	1.82

All (3) bond angle outliers are listed below:

Mol	Chain	Res	Type	Atoms	Z	Observed(°)	Ideal(°)
1	B	72	ARG	NE-CZ-NH2	-6.00	117.30	120.30
1	A	165	LYS	N-CA-C	5.78	126.62	111.00
1	B	165	LYS	N-CA-C	5.17	124.97	111.00

There are no chirality outliers.

There are no planarity outliers.

### 5.2 Too-close contacts [i](#)

In the following table, the Non-H and H(model) columns list the number of non-hydrogen atoms and hydrogen atoms in the chain respectively. The H(added) column lists the number of hydrogen atoms added and optimized by MolProbity. The Clashes column lists the number of clashes within the asymmetric unit, whereas Symm-Clashes lists symmetry related clashes.

Mol	Chain	Non-H	H(model)	H(added)	Clashes	Symm-Clashes
1	A	4993	0	4942	88	0
1	B	5069	0	4997	96	0

*Continued on next page...*

*Continued from previous page...*

Mol	Chain	Non-H	H(model)	H(added)	Clashes	Symm-Clashes
2	A	1	0	0	1	0
2	B	1	0	0	0	0
3	A	4	0	6	0	0
3	B	8	0	12	4	0
4	B	27	0	12	2	0
5	B	1	0	0	0	0
6	A	141	0	0	7	0
6	B	183	0	0	8	0
All	All	10428	0	9969	183	0

The all-atom clashscore is defined as the number of clashes found per 1000 atoms (including hydrogen atoms). The all-atom clashscore for this structure is 9.

All (183) close contacts within the same asymmetric unit are listed below, sorted by their clash magnitude.

Atom-1	Atom-2	Interatomic distance (Å)	Clash overlap (Å)
1:B:227:ARG:HD3	6:B:776:HOH:O	1.68	0.92
1:A:489:MSE:HE3	1:A:496:ASP:HB3	1.53	0.89
1:B:170:PHE:HE2	1:B:281:MSE:HE1	1.37	0.89
1:B:306:THR:HB	1:B:308:ARG:HH21	1.38	0.88
1:A:170:PHE:HE2	1:A:281:MSE:CE	1.91	0.83
1:B:303:ASN:O	1:B:304:THR:HG22	1.79	0.82
1:B:599:LYS:HA	1:B:599:LYS:HE3	1.64	0.78
1:A:170:PHE:HE2	1:A:281:MSE:HE1	1.46	0.78
1:B:170:PHE:CE2	1:B:281:MSE:HE1	2.20	0.77
1:A:170:PHE:CE2	1:A:281:MSE:CE	2.68	0.77
1:A:170:PHE:CE2	1:A:281:MSE:HE1	2.21	0.76
1:B:45:LYS:HD3	1:B:48:GLN:HB2	1.67	0.76
1:B:302:LEU:HD21	1:B:305:SER:HA	1.66	0.76
1:B:46:GLU:HG3	1:B:47:GLU:N	1.99	0.76
1:A:311:LYS:HG2	1:A:313:TYR:CZ	2.22	0.74
1:A:377:GLU:O	1:A:378:GLN:HB2	1.87	0.74
1:B:211:ILE:HG13	1:B:347:PHE:HE2	1.52	0.73
1:A:8:ILE:HD13	1:A:131:ILE:HG21	1.73	0.70
1:A:311:LYS:HG2	1:A:313:TYR:CE1	2.25	0.70
1:A:294:TYR:CE2	1:A:370:SER:HA	2.26	0.69
1:A:578:VAL:HA	1:A:581:LEU:HD21	1.74	0.69
1:A:578:VAL:CA	1:A:581:LEU:HD21	2.23	0.68
1:A:462:GLU:HG2	1:A:495:MSE:HE3	1.76	0.67
1:B:489:MSE:HE2	1:B:489:MSE:HA	1.75	0.67
1:B:599:LYS:CA	1:B:599:LYS:HE3	2.25	0.66

*Continued on next page...*

*Continued from previous page...*

Atom-1	Atom-2	Interatomic distance (Å)	Clash overlap (Å)
1:A:285:ARG:HD3	2:A:617:CL:CL	2.33	0.65
1:B:52:LEU:HD23	1:B:66:GLU:HG2	1.78	0.65
1:A:250:ASN:HD22	1:B:171:GLN:HG3	1.61	0.64
1:B:296:LYS:NZ	1:B:458:HIS:HE1	1.95	0.64
1:B:545[A]:ARG:HD3	6:B:758:HOH:O	1.97	0.64
1:A:534:MSE:HG3	6:A:713:HOH:O	1.97	0.64
1:B:542[B]:ASN:ND2	1:B:545[B]:ARG:HH22	1.95	0.63
1:A:489:MSE:HE3	1:A:496:ASP:CB	2.27	0.63
1:B:8:ILE:HG13	1:B:172:TYR:CD1	2.34	0.62
1:B:306:THR:HB	1:B:308:ARG:NH2	2.11	0.62
1:A:294:TYR:CD2	1:A:368[B]:ARG:NH1	2.66	0.62
1:A:511:LEU:C	1:A:511:LEU:HD23	2.20	0.62
1:B:151:GLU:HB2	1:B:285[B]:ARG:HH22	1.64	0.61
1:A:285:ARG:HB3	1:A:294:TYR:CE1	2.35	0.61
1:A:481:HIS:HD2	1:A:483:THR:H	1.49	0.61
1:B:52:LEU:CD2	1:B:66:GLU:HG2	2.31	0.61
1:A:26[B]:ARG:HD3	1:A:80:ILE:O	2.01	0.61
1:A:303:ASN:O	1:A:304:THR:HG22	2.01	0.60
1:B:152:ASN:OD1	1:B:285[B]:ARG:NH2	2.33	0.60
1:B:488:LYS:O	1:B:491:ASP:HB2	2.01	0.60
1:A:528:LYS:HE2	6:A:730:HOH:O	2.01	0.60
1:A:304:THR:O	1:A:304:THR:HG23	2.03	0.59
1:B:264:GLY:HA2	3:B:619:EDO:H22	1.84	0.59
1:B:528:LYS:HB2	3:B:620:EDO:O1	2.03	0.59
1:B:427:VAL:HG22	1:B:557:ILE:HD12	1.84	0.58
1:A:28:LEU:HA	1:A:162:PRO:HG3	1.85	0.57
1:B:578:VAL:HG11	1:B:581:LEU:HD13	1.87	0.57
1:A:168:ILE:HB	1:A:302:LEU:HB3	1.87	0.56
1:B:489:MSE:O	1:B:490:ASN:HB2	2.06	0.56
1:A:285:ARG:HB3	1:A:294:TYR:HE1	1.71	0.56
1:B:565:TYR:HE1	1:B:584:GLU:HB2	1.70	0.56
1:A:236:LYS:HE3	6:A:739:HOH:O	2.06	0.56
1:A:355:ASN:OD1	1:A:355:ASN:N	2.38	0.56
1:A:490:ASN:ND2	1:A:495:MSE:HA	2.21	0.56
1:B:432:ALA:HB1	1:B:504:MSE:HG2	1.86	0.56
1:B:122:LEU:HD23	1:B:163:SER:HB3	1.87	0.56
1:B:211:ILE:HG13	1:B:347:PHE:CE2	2.39	0.56
1:B:497:ARG:HG3	1:B:500[B]:CYS:SG	2.46	0.56
1:A:8:ILE:CD1	1:A:131:ILE:HG21	2.36	0.55
1:A:202:TYR:CD2	1:A:203:GLU:HG3	2.41	0.55
1:B:316:ALA:HB2	1:B:351:MSE:HE1	1.86	0.55

*Continued on next page...*

*Continued from previous page...*

Atom-1	Atom-2	Interatomic distance (Å)	Clash overlap (Å)
1:A:579:GLU:OE2	1:A:579:GLU:HA	2.07	0.55
1:B:339:SER:HB3	1:B:341:VAL:HG23	1.88	0.55
1:A:490:ASN:HD21	1:A:496:ASP:H	1.55	0.55
1:A:368[A]:ARG:NE	6:A:687:HOH:O	2.31	0.55
1:A:512:PHE:HB3	6:A:751:HOH:O	2.06	0.55
1:B:304:THR:HG23	1:B:304:THR:O	2.07	0.55
1:B:436[B]:HIS:HE1	1:B:438:GLN:HB3	1.72	0.55
1:A:434:GLU:HG2	1:A:439:ASN:HD21	1.72	0.54
1:B:411:LEU:O	1:B:415:ILE:HG12	2.07	0.54
1:A:368[A]:ARG:NH2	1:A:456:ASP:OD1	2.38	0.54
1:B:578:VAL:CG1	1:B:581:LEU:HD13	2.38	0.54
1:B:321:ILE:HD11	1:B:493:PHE:CZ	2.43	0.54
1:B:470:GLU:OE1	1:B:473:LYS:HD3	2.07	0.54
1:A:254:SER:HB2	1:B:124:GLN:HE22	1.72	0.53
1:A:294:TYR:CE2	1:A:368[B]:ARG:NH1	2.76	0.53
1:B:522:ALA:HA	1:B:527:TRP:O	2.09	0.53
1:A:164:TYR:HB2	6:A:737:HOH:O	2.08	0.53
1:B:264:GLY:CA	3:B:619:EDO:H22	2.38	0.53
1:A:183:MSE:HA	6:A:734:HOH:O	2.08	0.52
1:A:98:ALA:O	1:A:102:GLU:HG2	2.09	0.52
1:A:122:LEU:HD21	1:A:162:PRO:HB2	1.90	0.52
1:B:47:GLU:HA	1:B:47:GLU:OE2	2.11	0.51
1:B:318:ALA:HB3	1:B:319:PRO:HD3	1.92	0.50
1:A:433:LEU:CD1	1:A:454:LEU:HD13	2.41	0.50
1:B:137:CYS:SG	1:B:138:ASN:N	2.84	0.50
1:A:136:ARG:HG2	1:A:155:ILE:HD11	1.94	0.50
1:B:231:MSE:CE	1:B:263:LYS:HE2	2.41	0.50
4:B:617:ATP:N6	6:B:766:HOH:O	2.44	0.50
1:B:565:TYR:CE1	1:B:584:GLU:HB2	2.47	0.50
1:A:481:HIS:CD2	1:A:483:THR:H	2.29	0.49
1:A:465:ARG:HG2	1:A:471:MSE:HE3	1.93	0.49
1:B:231:MSE:HE2	1:B:263:LYS:HE2	1.94	0.49
1:A:497:ARG:NH1	1:A:499:GLU:HB2	2.28	0.49
1:A:202:TYR:CE2	1:A:203:GLU:HG3	2.48	0.49
1:B:101:LEU:HD22	1:B:105:PHE:HE2	1.76	0.49
1:A:129:ASP:O	1:A:133[A]:GLN:HG2	2.13	0.48
1:A:581:LEU:HD22	1:A:581:LEU:N	2.28	0.48
1:B:295:VAL:HG12	1:B:297:VAL:HG13	1.95	0.48
1:B:200:VAL:HG13	1:B:204:ASN:HB3	1.96	0.48
1:B:534[A]:MSE:HG3	6:B:752:HOH:O	2.14	0.47
1:A:295:VAL:HG12	1:A:297:VAL:HG13	1.95	0.47

*Continued on next page...*

*Continued from previous page...*

Atom-1	Atom-2	Interatomic distance (Å)	Clash overlap (Å)
1:B:151:GLU:CB	1:B:285[B]:ARG:HH22	2.26	0.47
1:B:193:ALA:HB1	1:B:352:TYR:CD1	2.49	0.47
1:A:318:ALA:HB3	1:A:319:PRO:HD3	1.95	0.47
1:A:202:TYR:CD2	1:A:480:MSE:HG2	2.50	0.47
1:A:324:TRP:HZ3	1:A:461:LEU:HD21	1.79	0.46
1:B:336:ARG:O	1:B:340[A]:ARG:HG3	2.15	0.46
1:A:280:SER:O	1:A:281:MSE:HB3	2.15	0.46
1:B:73:ILE:HD13	1:B:530:GLU:HG3	1.98	0.46
1:B:590:TYR:O	1:B:594:GLN:HG2	2.15	0.46
1:A:250:ASN:HD22	1:B:171:GLN:CG	2.29	0.46
1:B:138:ASN:HA	6:B:785:HOH:O	2.16	0.46
1:B:277:ALA:HB1	1:B:281:MSE:HA	1.97	0.46
1:B:294:TYR:CE2	1:B:370:SER:HA	2.51	0.46
1:A:149:GLU:H	1:A:149:GLU:HG2	1.54	0.45
1:A:202:TYR:CG	1:A:480:MSE:HG2	2.52	0.45
1:B:581:LEU:HA	1:B:581:LEU:HD12	1.59	0.45
1:B:580:SER:O	1:B:581:LEU:HB2	2.17	0.45
1:A:566:ALA:O	1:A:582:VAL:HA	2.17	0.45
1:B:56:LEU:HD23	1:B:62:SER:HA	1.98	0.45
1:A:489:MSE:O	1:A:490:ASN:HB2	2.17	0.45
1:B:211:ILE:HD13	1:B:215:GLU:HG2	1.99	0.45
1:B:452:ILE:HD12	1:B:452:ILE:HA	1.86	0.44
1:A:316:ALA:HB2	1:A:351:MSE:HE1	1.99	0.44
1:B:145:LYS:HA	1:B:145:LYS:HE2	1.99	0.44
1:B:154:LEU:HD11	1:B:383:PRO:HG2	1.99	0.44
1:A:152:ASN:ND2	1:A:183:MSE:HG2	2.32	0.44
1:A:3:MSE:CE	1:A:7:LYS:HE3	2.48	0.44
1:B:216:VAL:HG12	1:B:220:LYS:HB3	2.00	0.44
1:B:89[A]:ASP:CG	1:B:90:GLY:N	2.71	0.44
1:B:99:GLN:O	1:B:103:GLU:HG3	2.18	0.44
1:B:296:LYS:HZ2	1:B:458:HIS:HE1	1.63	0.44
1:B:9:LEU:HD23	1:B:9:LEU:HA	1.80	0.44
1:B:282:ARG:HB2	1:B:297:VAL:O	2.18	0.43
1:B:296:LYS:HZ3	1:B:458:HIS:CE1	2.36	0.43
1:A:311:LYS:HE3	1:A:360:TYR:HE2	1.83	0.43
1:A:401:TRP:CE2	1:A:447:GLY:HA2	2.54	0.43
1:A:84:ILE:O	1:A:94:ILE:HG22	2.18	0.43
1:B:193:ALA:HB1	1:B:352:TYR:HD1	1.84	0.43
1:B:441:ILE:O	1:B:452:ILE:HD12	2.18	0.43
1:B:511:LEU:C	1:B:511:LEU:HD23	2.39	0.43
1:A:489:MSE:CE	1:A:496:ASP:HB3	2.36	0.43

*Continued on next page...*

*Continued from previous page...*

Atom-1	Atom-2	Interatomic distance (Å)	Clash overlap (Å)
1:B:118:PHE:CD2	1:B:574:LEU:HD21	2.55	0.42
1:B:528:LYS:HD3	3:B:620:EDO:O1	2.19	0.42
1:A:490:ASN:HD22	1:A:495:MSE:HA	1.83	0.42
1:A:304:THR:O	1:A:305:SER:OG	2.29	0.42
1:A:2:ASP:OD2	1:A:173:ARG:NH2	2.41	0.42
1:A:8:ILE:HG13	1:A:172:TYR:CD1	2.55	0.42
1:B:571:LYS:HE3	1:B:578:VAL:HG21	2.01	0.42
1:B:465:ARG:HB3	1:B:466:PRO:HD3	2.00	0.42
1:A:145:LYS:HZ2	1:A:153:HIS:CB	2.32	0.41
1:A:28:LEU:HD21	1:A:101:LEU:HD21	2.03	0.41
1:B:317:SER:OG	6:B:769:HOH:O	2.22	0.41
1:A:131:ILE:HD12	1:A:131:ILE:HG21	1.76	0.41
1:A:133[B]:GLN:HE21	1:A:133[B]:GLN:HB3	1.61	0.41
1:B:280:SER:O	1:B:281:MSE:HB2	2.20	0.41
1:B:415:ILE:O	1:B:420:ILE:HG12	2.20	0.41
1:B:45:LYS:HD2	1:B:68:TYR:HE2	1.85	0.41
1:A:546:LYS:C	1:A:548:PRO:HD3	2.41	0.41
1:A:72:ARG:O	1:A:76:GLY:HA2	2.20	0.41
4:B:617:ATP:O3B	6:B:672:HOH:O	2.22	0.41
1:A:575:TYR:O	1:A:578:VAL:HG13	2.20	0.41
1:A:65:TYR:CE2	1:A:86[A]:ARG:HB2	2.56	0.41
1:B:145:LYS:HB3	1:B:150:LEU:HG	2.02	0.41
1:B:368:ARG:NH2	6:B:672:HOH:O	2.53	0.41
1:A:382:VAL:HG23	1:A:383:PRO:HD2	2.03	0.41
1:B:8:ILE:HG23	1:B:8:ILE:HD12	1.65	0.41
1:B:113:THR:HG22	1:B:114:LYS:N	2.36	0.41
1:A:158:HIS:CD2	1:A:438:GLN:HE22	2.38	0.41
1:A:504:MSE:O	1:A:508:ALA:HB3	2.21	0.41
1:B:488:LYS:HG2	1:B:491:ASP:CG	2.41	0.40
1:B:441:ILE:HB	1:B:453:ALA:HB3	2.01	0.40
1:A:187:LYS:HD3	1:A:271:SER:O	2.21	0.40
1:B:294:TYR:HD2	1:B:368:ARG:HG2	1.87	0.40
1:B:296:LYS:HZ3	1:B:458:HIS:HE1	1.64	0.40
1:A:101:LEU:HD22	1:A:105:PHE:HE1	1.85	0.40
1:A:193:ALA:HB1	1:A:352:TYR:CD1	2.56	0.40

There are no symmetry-related clashes.

## 5.3 Torsion angles [i](#)

### 5.3.1 Protein backbone [i](#)

In the following table, the Percentiles column shows the percent Ramachandran outliers of the chain as a percentile score with respect to all X-ray entries followed by that with respect to entries of similar resolution.

The Analysed column shows the number of residues for which the backbone conformation was analysed, and the total number of residues.

Mol	Chain	Analysed	Favoured	Allowed	Outliers	Percentiles	
1	A	595/619 (96%)	577 (97%)	18 (3%)	0	100	100
1	B	605/619 (98%)	587 (97%)	18 (3%)	0	100	100
All	All	1200/1238 (97%)	1164 (97%)	36 (3%)	0	100	100

There are no Ramachandran outliers to report.

### 5.3.2 Protein sidechains [i](#)

In the following table, the Percentiles column shows the percent sidechain outliers of the chain as a percentile score with respect to all X-ray entries followed by that with respect to entries of similar resolution.

The Analysed column shows the number of residues for which the sidechain conformation was analysed, and the total number of residues.

Mol	Chain	Analysed	Rotameric	Outliers	Percentiles	
1	A	546/548 (100%)	521 (95%)	25 (5%)	27	40
1	B	555/548 (101%)	516 (93%)	39 (7%)	15	21
All	All	1101/1096 (100%)	1037 (94%)	64 (6%)	21	30

All (64) residues with a non-rotameric sidechain are listed below:

Mol	Chain	Res	Type
1	A	15	GLU
1	A	131	ILE
1	A	136	ARG
1	A	149	GLU
1	A	211	ILE
1	A	254	SER
1	A	261	GLN
1	A	279	GLN

*Continued on next page...*

*Continued from previous page...*

<b>Mol</b>	<b>Chain</b>	<b>Res</b>	<b>Type</b>
1	A	301	ILE
1	A	302	LEU
1	A	304	THR
1	A	306	THR
1	A	355	ASN
1	A	377	GLU
1	A	380	ASP
1	A	397	ILE
1	A	434	GLU
1	A	435	SER
1	A	489	MSE
1	A	492	PHE
1	A	500	CYS
1	A	507	ASP
1	A	555	GLU
1	A	577	ASP
1	A	581	LEU
1	B	19	SER
1	B	46	GLU
1	B	89[A]	ASP
1	B	89[B]	ASP
1	B	95	GLN
1	B	113	THR
1	B	165	LYS
1	B	186	ILE
1	B	200	VAL
1	B	211	ILE
1	B	214	SER
1	B	220	LYS
1	B	226	GLU
1	B	258	GLU
1	B	263	LYS
1	B	280	SER
1	B	285[A]	ARG
1	B	285[B]	ARG
1	B	302	LEU
1	B	304	THR
1	B	306	THR
1	B	339	SER
1	B	356	LYS
1	B	428	GLU
1	B	469	LYS

*Continued on next page...*



*Continued from previous page...*

Mol	Chain	Res	Type
1	B	470	GLU
1	B	488	LYS
1	B	489	MSE
1	B	492	PHE
1	B	500[A]	CYS
1	B	500[B]	CYS
1	B	573	ARG
1	B	577	ASP
1	B	578	VAL
1	B	580	SER
1	B	581	LEU
1	B	582	VAL
1	B	599	LYS
1	B	600	SER

Some sidechains can be flipped to improve hydrogen bonding and reduce clashes. All (15) such sidechains are listed below:

Mol	Chain	Res	Type
1	A	161	HIS
1	A	171	GLN
1	A	250	ASN
1	A	261	GLN
1	A	438	GLN
1	A	439	ASN
1	A	481	HIS
1	A	490	ASN
1	A	583	HIS
1	B	60	ASN
1	B	153	HIS
1	B	204	ASN
1	B	439	ASN
1	B	458	HIS
1	B	598	GLN

### 5.3.3 RNA

There are no RNA molecules in this entry.

## 5.4 Non-standard residues in protein, DNA, RNA chains [i](#)

There are no non-standard protein/DNA/RNA residues in this entry.

## 5.5 Carbohydrates [i](#)

There are no carbohydrates in this entry.

## 5.6 Ligand geometry [i](#)

Of 7 ligands modelled in this entry, 3 are monoatomic - leaving 4 for Mogul analysis.

In the following table, the Counts columns list the number of bonds (or angles) for which Mogul statistics could be retrieved, the number of bonds (or angles) that are observed in the model and the number of bonds (or angles) that are defined in the Chemical Component Dictionary. The Link column lists molecule types, if any, to which the group is linked. The Z score for a bond length (or angle) is the number of standard deviations the observed value is removed from the expected value. A bond length (or angle) with  $|Z| > 2$  is considered an outlier worth inspection. RMSZ is the root-mean-square of all Z scores of the bond lengths (or angles).

Mol	Type	Chain	Res	Link	Bond lengths			Bond angles		
					Counts	RMSZ	# $ Z  > 2$	Counts	RMSZ	# $ Z  > 2$
4	ATP	B	617	5	24,29,33	1.53	7 (29%)	29,45,52	1.40	5 (17%)
3	EDO	A	618	-	3,3,3	0.49	0	2,2,2	0.35	0
3	EDO	B	620	-	3,3,3	0.36	0	2,2,2	0.72	0
3	EDO	B	619	-	3,3,3	0.54	0	2,2,2	0.28	0

In the following table, the Chirals column lists the number of chiral outliers, the number of chiral centers analysed, the number of these observed in the model and the number defined in the Chemical Component Dictionary. Similar counts are reported in the Torsion and Rings columns. '-' means no outliers of that kind were identified.

Mol	Type	Chain	Res	Link	Chirals	Torsions	Rings
4	ATP	B	617	5	-	4/12/32/38	0/3/3/3
3	EDO	A	618	-	-	0/1/1/1	-
3	EDO	B	620	-	-	1/1/1/1	-
3	EDO	B	619	-	-	1/1/1/1	-

All (7) bond length outliers are listed below:

Mol	Chain	Res	Type	Atoms	Z	Observed(Å)	Ideal(Å)
4	B	617	ATP	C5'-C4'	-2.83	1.42	1.51
4	B	617	ATP	C2'-C1'	-2.82	1.49	1.53

*Continued on next page...*

*Continued from previous page...*

Mol	Chain	Res	Type	Atoms	Z	Observed(Å)	Ideal(Å)
4	B	617	ATP	C6-N6	2.76	1.44	1.34
4	B	617	ATP	O2'-C2'	-2.56	1.37	1.43
4	B	617	ATP	C2-N3	2.22	1.35	1.32
4	B	617	ATP	O3'-C3'	-2.13	1.38	1.43
4	B	617	ATP	C2'-C3'	-2.01	1.47	1.53

All (5) bond angle outliers are listed below:

Mol	Chain	Res	Type	Atoms	Z	Observed(°)	Ideal(°)
4	B	617	ATP	N3-C2-N1	-4.42	121.76	128.68
4	B	617	ATP	PA-O3A-PB	-3.35	121.34	132.83
4	B	617	ATP	O4'-C1'-C2'	-2.33	103.52	106.93
4	B	617	ATP	O5'-C5'-C4'	2.26	116.76	108.99
4	B	617	ATP	C4-C5-N7	-2.03	107.29	109.40

There are no chirality outliers.

All (6) torsion outliers are listed below:

Mol	Chain	Res	Type	Atoms
4	B	617	ATP	C5'-O5'-PA-O3A
3	B	620	EDO	O1-C1-C2-O2
4	B	617	ATP	O4'-C4'-C5'-O5'
3	B	619	EDO	O1-C1-C2-O2
4	B	617	ATP	C5'-O5'-PA-O2A
4	B	617	ATP	C5'-O5'-PA-O1A

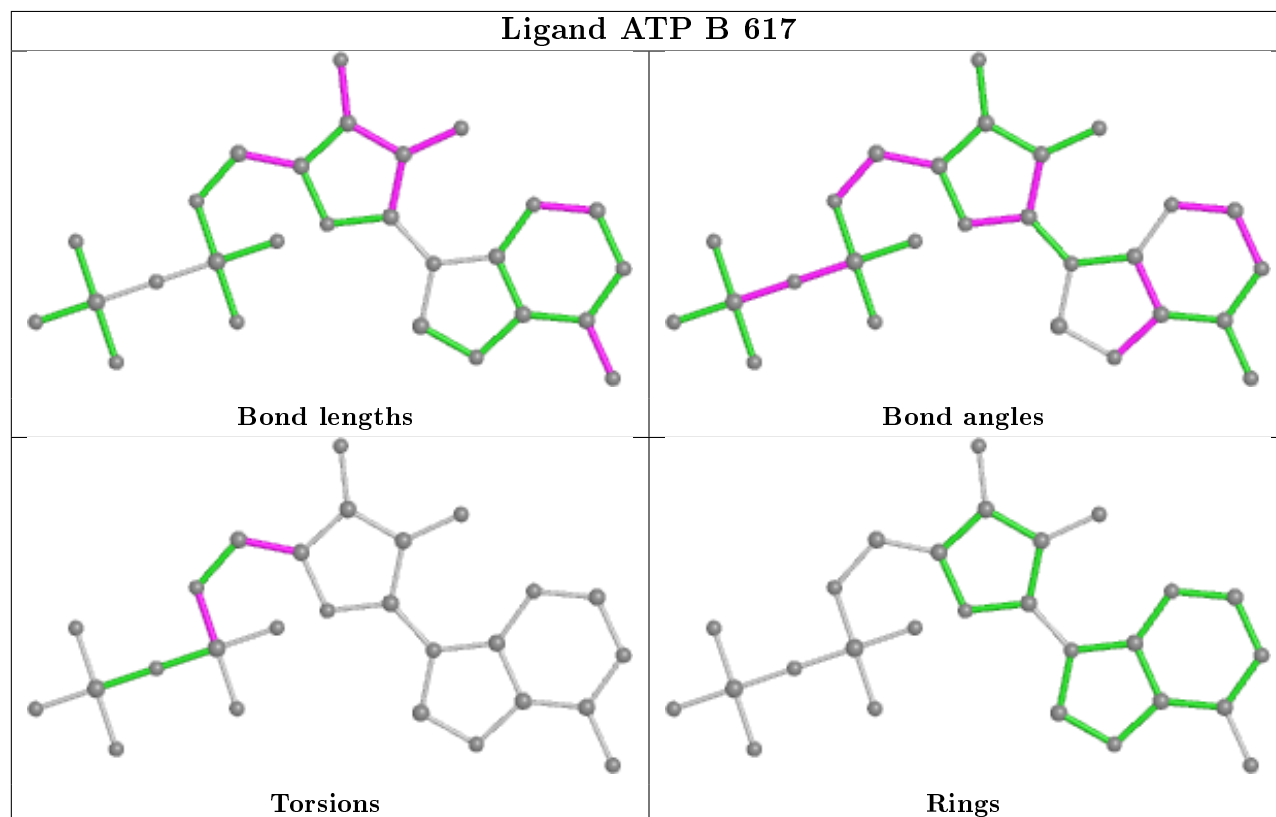
There are no ring outliers.

3 monomers are involved in 6 short contacts:

Mol	Chain	Res	Type	Clashes	Symm-Clashes
4	B	617	ATP	2	0
3	B	620	EDO	2	0
3	B	619	EDO	2	0

The following is a two-dimensional graphical depiction of Mogul quality analysis of bond lengths, bond angles, torsion angles, and ring geometry for all instances of the Ligand of Interest. In addition, ligands with molecular weight > 250 and outliers as shown on the validation Tables will also be included. For torsion angles, if less than 5% of the Mogul distribution of torsion angles is within 10 degrees of the torsion angle in question, then that torsion angle is considered an outlier. Any bond that is central to one or more torsion angles identified as an outlier by Mogul will be highlighted in the graph. For rings, the root-mean-square deviation (RMSD) between the ring

in question and similar rings identified by Mogul is calculated over all ring torsion angles. If the average RMSD is greater than 60 degrees and the minimal RMSD between the ring in question and any Mogul-identified rings is also greater than 60 degrees, then that ring is considered an outlier. The outliers are highlighted in purple. The color gray indicates Mogul did not find sufficient equivalents in the CSD to analyse the geometry.



## 5.7 Other polymers [i](#)

There are no such residues in this entry.

## 5.8 Polymer linkage issues [i](#)

There are no chain breaks in this entry.

## 6 Fit of model and data

### 6.1 Protein, DNA and RNA chains

In the following table, the column labelled ‘#RSRZ> 2’ contains the number (and percentage) of RSRZ outliers, followed by percent RSRZ outliers for the chain as percentile scores relative to all X-ray entries and entries of similar resolution. The OWAB column contains the minimum, median, 95<sup>th</sup> percentile and maximum values of the occupancy-weighted average B-factor per residue. The column labelled ‘Q< 0.9’ lists the number of (and percentage) of residues with an average occupancy less than 0.9.

Mol	Chain	Analysed	<RSRZ>	#RSRZ>2	OWAB(Å <sup>2</sup> )	Q<0.9
1	A	580/619 (93%)	-0.12	16 (2%) 53 55	34, 56, 99, 153	2 (0%)
1	B	582/619 (94%)	-0.31	5 (0%) 84 84	33, 52, 94, 139	0
All	All	1162/1238 (93%)	-0.21	21 (1%) 68 70	33, 54, 98, 153	2 (0%)

All (21) RSRZ outliers are listed below:

Mol	Chain	Res	Type	RSRZ
1	A	578	VAL	6.6
1	A	577	ASP	3.7
1	B	227	ARG	3.3
1	A	488	LYS	3.3
1	B	0	ALA	3.3
1	A	527	TRP	3.3
1	A	485	ALA	3.2
1	A	579	GLU	3.1
1	A	487	GLY	2.8
1	A	280	SER	2.8
1	A	576	ILE	2.4
1	A	47	GLU	2.4
1	B	492	PHE	2.3
1	A	284	LEU	2.2
1	A	486	ASN	2.2
1	A	355	ASN	2.2
1	A	490	ASN	2.1
1	B	578	VAL	2.1
1	B	600	SER	2.1
1	A	496	ASP	2.1
1	A	448	LEU	2.0

## 6.2 Non-standard residues in protein, DNA, RNA chains [i](#)

There are no non-standard protein/DNA/RNA residues in this entry.

## 6.3 Carbohydrates [i](#)

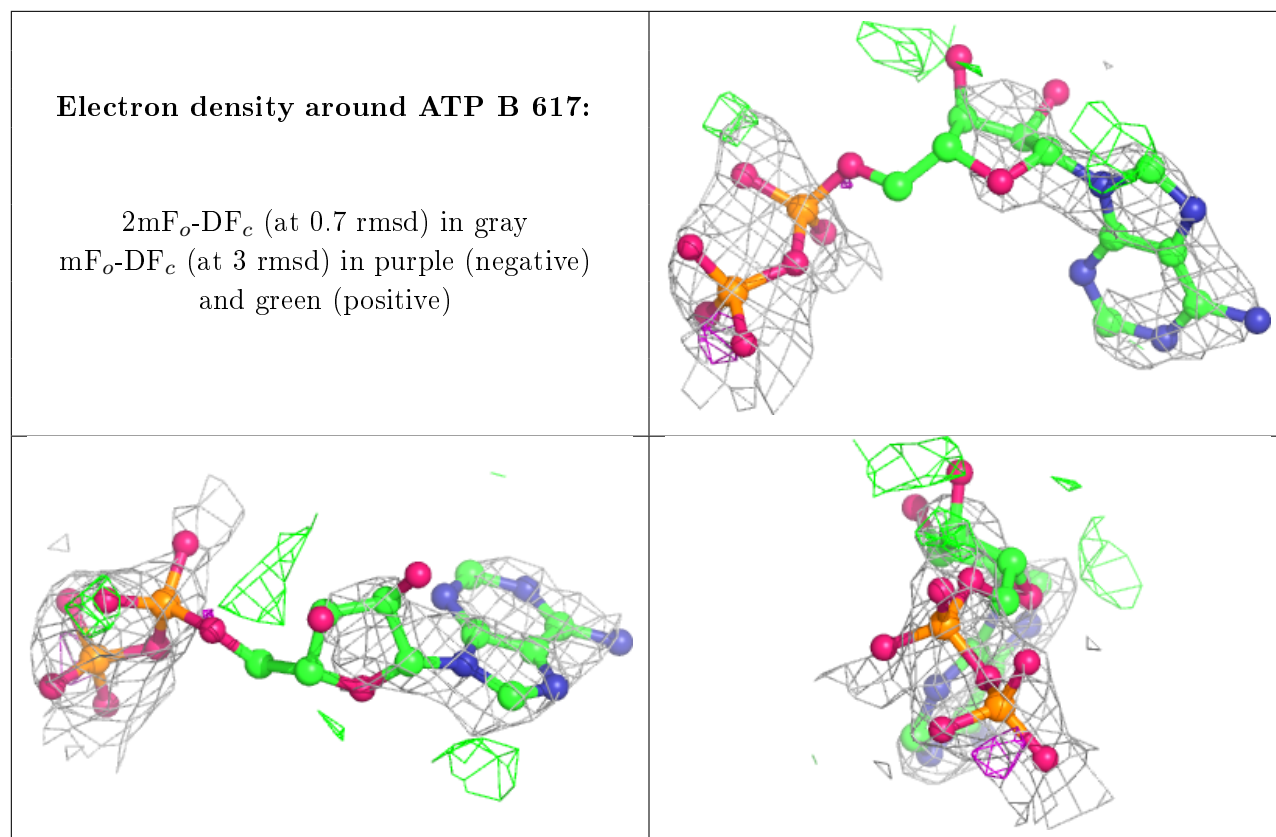
There are no carbohydrates in this entry.

## 6.4 Ligands [i](#)

In the following table, the Atoms column lists the number of modelled atoms in the group and the number defined in the chemical component dictionary. The B-factors column lists the minimum, median, 95<sup>th</sup> percentile and maximum values of B factors of atoms in the group. The column labelled 'Q< 0.9' lists the number of atoms with occupancy less than 0.9.

Mol	Type	Chain	Res	Atoms	RSCC	RSR	B-factors(Å <sup>2</sup> )	Q<0.9
4	ATP	B	617	27/31	0.84	0.26	56,88,119,129	27
3	EDO	B	620	4/4	0.84	0.22	84,84,88,93	0
3	EDO	B	619	4/4	0.87	0.19	88,89,93,94	0
2	CL	A	617	1/1	0.87	0.25	90,90,90,90	0
2	CL	B	621	1/1	0.91	0.07	87,87,87,87	0
3	EDO	A	618	4/4	0.92	0.16	82,84,91,95	0
5	MG	B	618	1/1	0.94	0.08	73,73,73,73	0

The following is a graphical depiction of the model fit to experimental electron density of all instances of the Ligand of Interest. In addition, ligands with molecular weight > 250 and outliers as shown on the geometry validation Tables will also be included. Each fit is shown from different orientation to approximate a three-dimensional view.



## 6.5 Other polymers [i](#)

There are no such residues in this entry.